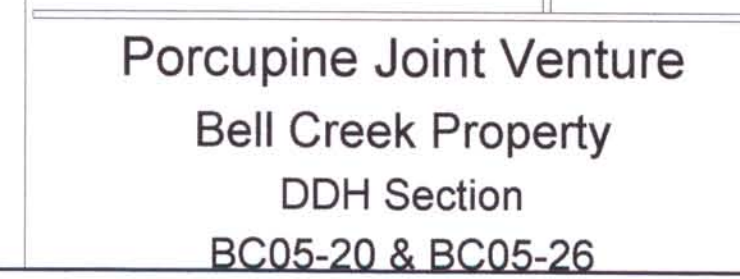


ROCK CODES	L/R	PAT	LABEL	DESCRIPTION
Lithology	L	CAS	Casing	
	L	FZ	Fault Zone	
	L	QV	Quartz Vein	
	L	S510	Ophiolite Angites	
	L	VM	Mafic Metavolcanics	
	L	VM1	High Fe Basalts	
	L	VM2	Basaltic Xenocrysts	

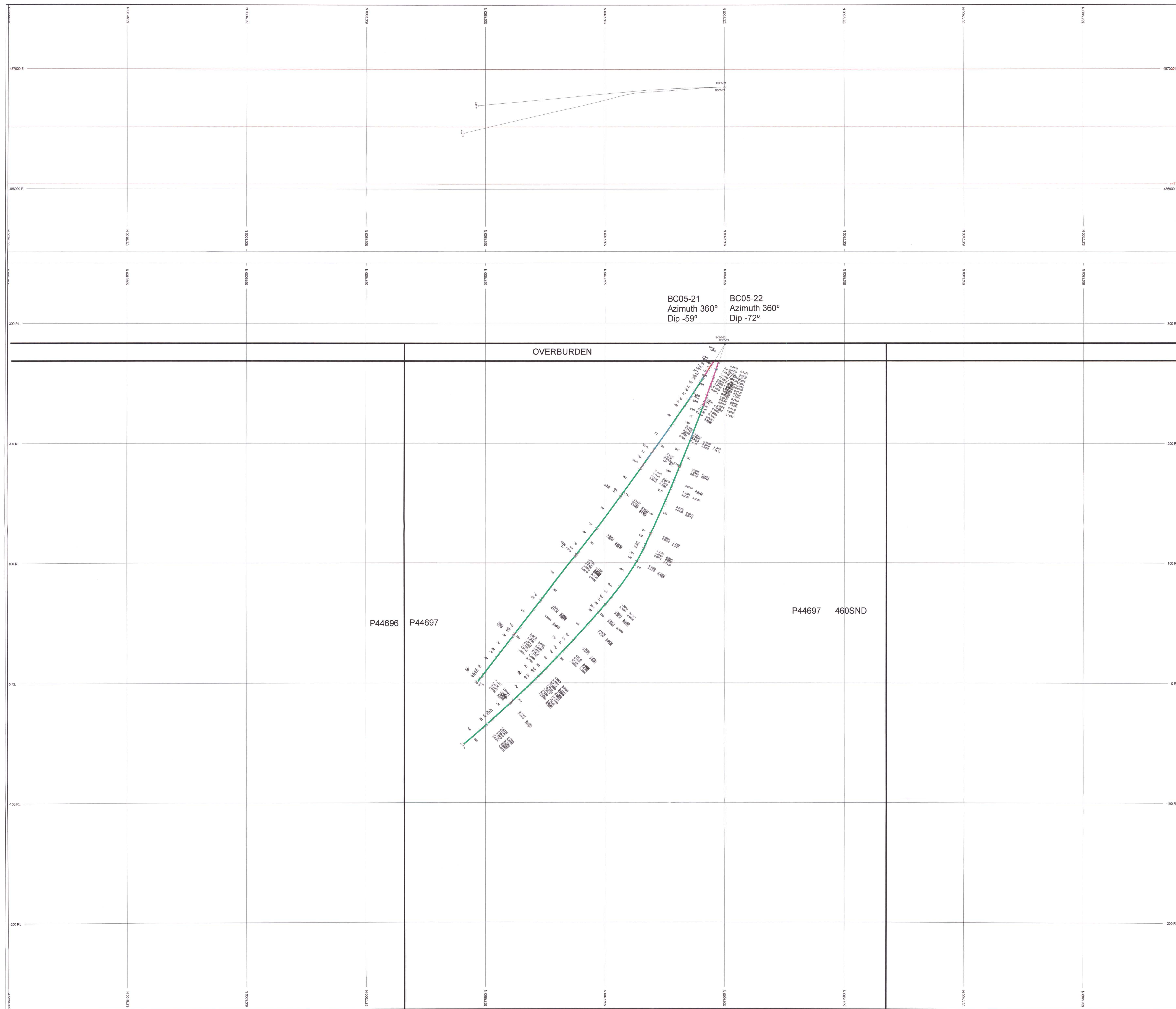
ASSAYS	L/R	TEXT
Au_AA_gsm	R	---

POSTED TEXT	L/R	TEXT	ITEMS
Lithology	L	---	AI

SECTION SPECS:
 REF. FT. E, N 408818 m 5377800 m
 EXTENTS 493.8 m 312.6 m
 SECTION TOP, BOT 219 m 6.36 m
 TOLERANCE +/- 44.85 m



Porcupine Joint Venture
 Bell Creek Property
 DDH Section
 BC05-20 & BC05-26

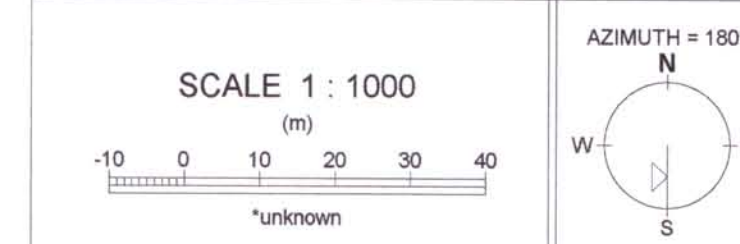


ROCK CODES	L	PAT	LABEL	DESCRIPTION
LH	Basaltic andesite			Basaltic andesite
VM	High Fe Basalts			High Fe Basalts
SS	Graphic Argillite			Graphic Argillite
CV	Quartz Vein			Quartz Vein
FZ	Fault Zone			Fault Zone
CA	Clay			Clay

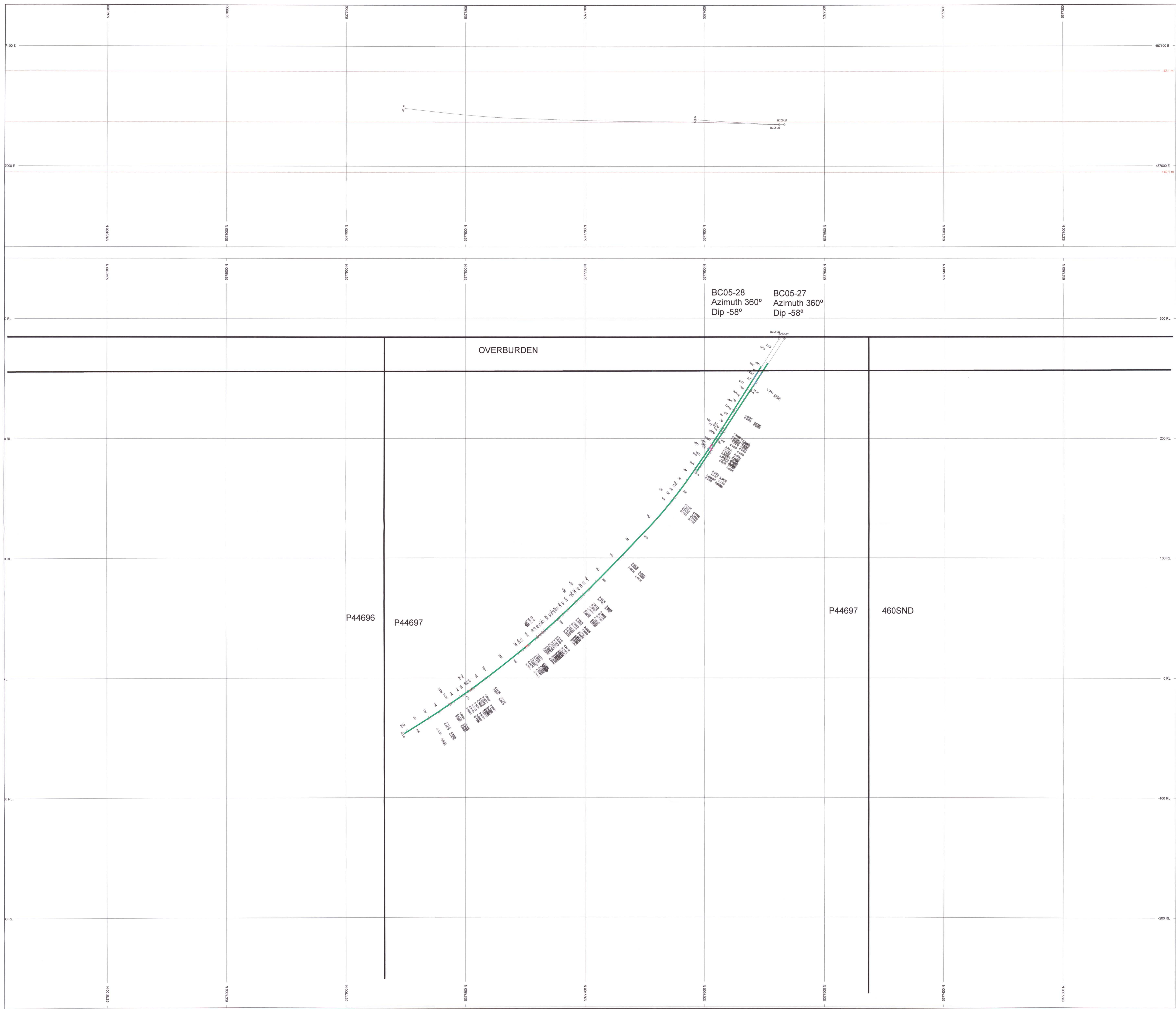
ASSAYS	L	R	TEXT	ITEMS
Au, AA, ppm				

POSTED TEXT	L	R	TEXT	ITEMS
Lineage				

SECTION SPECS:	
REF. PT. E, N	486900 m 537710 m
EXTENTS	95.6 m 625.2 m
SECTION TOP, BOT	350.2 m -275 m
TOLERANCE +/-	47.8 m



Porcupine Joint Venture
 Bell Creek Property
 DDH Section
 BC05-21 & BC05-22



BC05-28
Azimuth 360°
Dip -58°

BC05-27
Azimuth 360°
Dip -58°

OVERBURDEN

P44696

P44697

P44697

460SND

ROCK CODES	LR	PAT	LABEL	DESCRIPTION
Lithology	L	CAS	Casing	
		FZ	Fault Zone	
		QV	Quartz Vein	
		SS10	Chaplin Argillite	
		VM	Mafic Metasandstone	
		VH1	High Fe Basalts	
		DM1	Basaltic Komatiite	

ASSAYS	LR	TEXT
Al ₂ O ₃ ppm	R	

POSTED TEXT	LR	TEXT	ITEMS
Lithology			AI

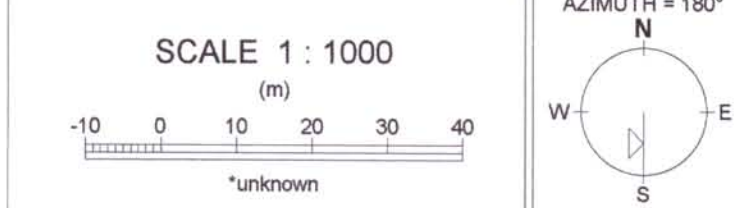
SECTION SPECS:

REF. PT. E, N 487037 m 537700 m

EXTENTS 987.6 m 652.2 m

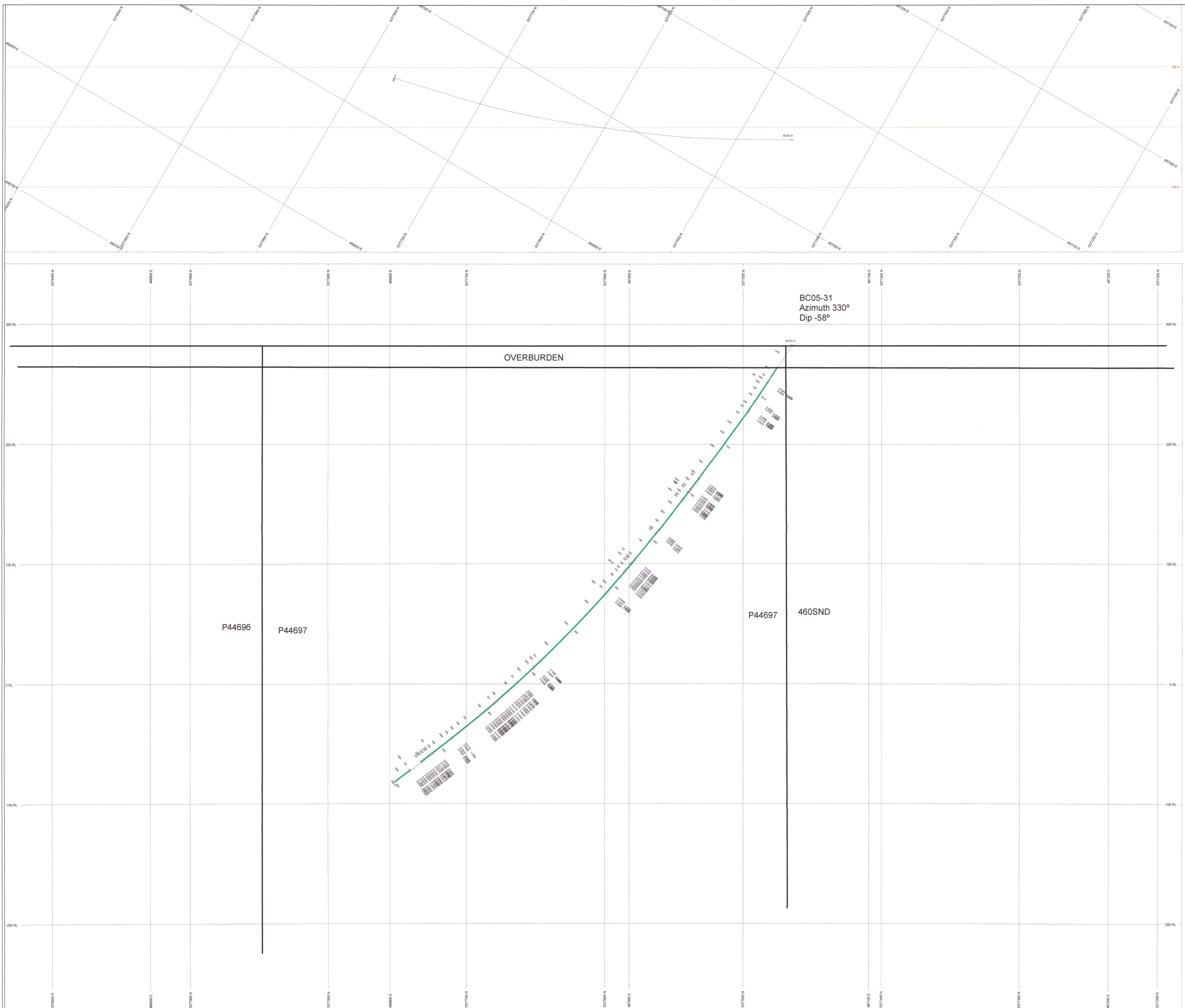
SECTION TOP, BOT 352.2 m 275 m

TOLERANCE +/- 42.1 m



SCALE 1 : 1000
(m)

Porcupine Joint Venture
Bell Creek Property
DDH Section
BC05-27 & BC05-28

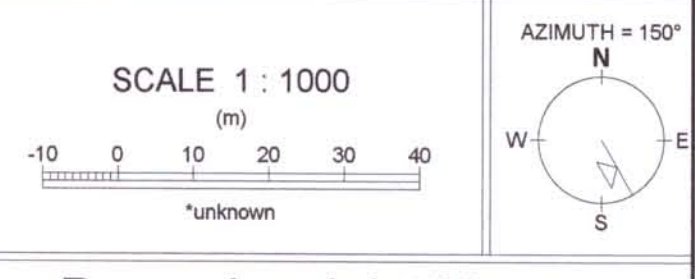


ROCK CODES	L	PAT	LABEL	DESCRIPTION
Lineage	L	CAS	Change	
	L	FZ	Fault Zone	
	L	CV	Clastic Vein	
	L	BS10	Graphitic Argillite	
	L	VM	Mafic Metabasalt	
	L	VMH	High Fe Basalts	

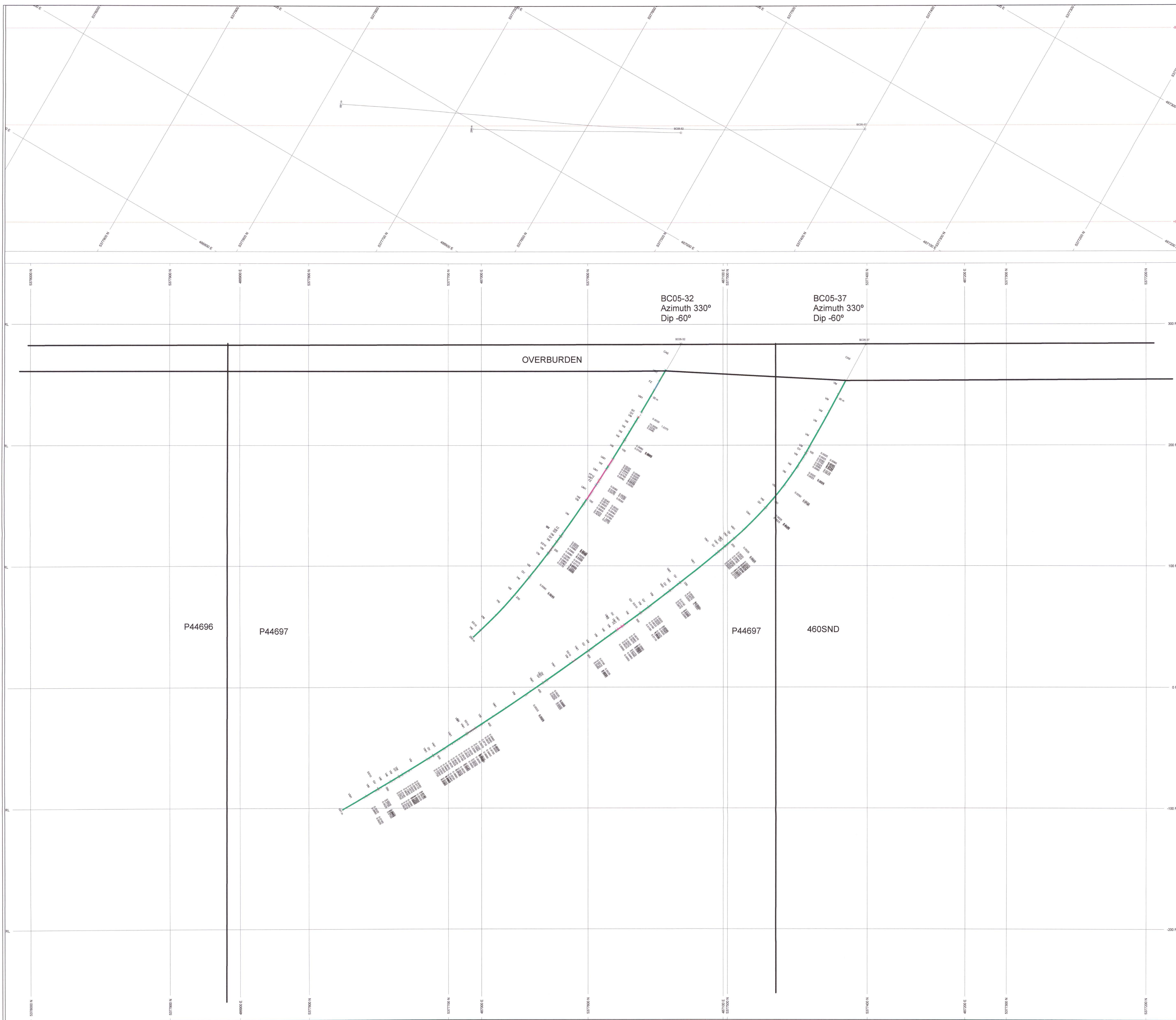
ASSAYS	L/R	TEXT
Au_Au_gpm	R	---

POSTED TEXT	L/R	TEXT	ITEMS
Lineage	L	---	---

SECTION SPECS:
 REF. FT. E, N 40598 m 5377610 m
 EXTENTS 987.6 m 625.2 m
 SECTION TOP, BOT 355.2 m -275 m
 TOLERANCE +/- 50 m



Porcupine Joint Venture
 Bell Creek Property
 DDH Section
 BC05-31



BC05-32
Azimuth 330°
Dip -60°

BC05-37
Azimuth 330°
Dip -60°

OVERBURDEN

P44696

P44697

P44697

460SND

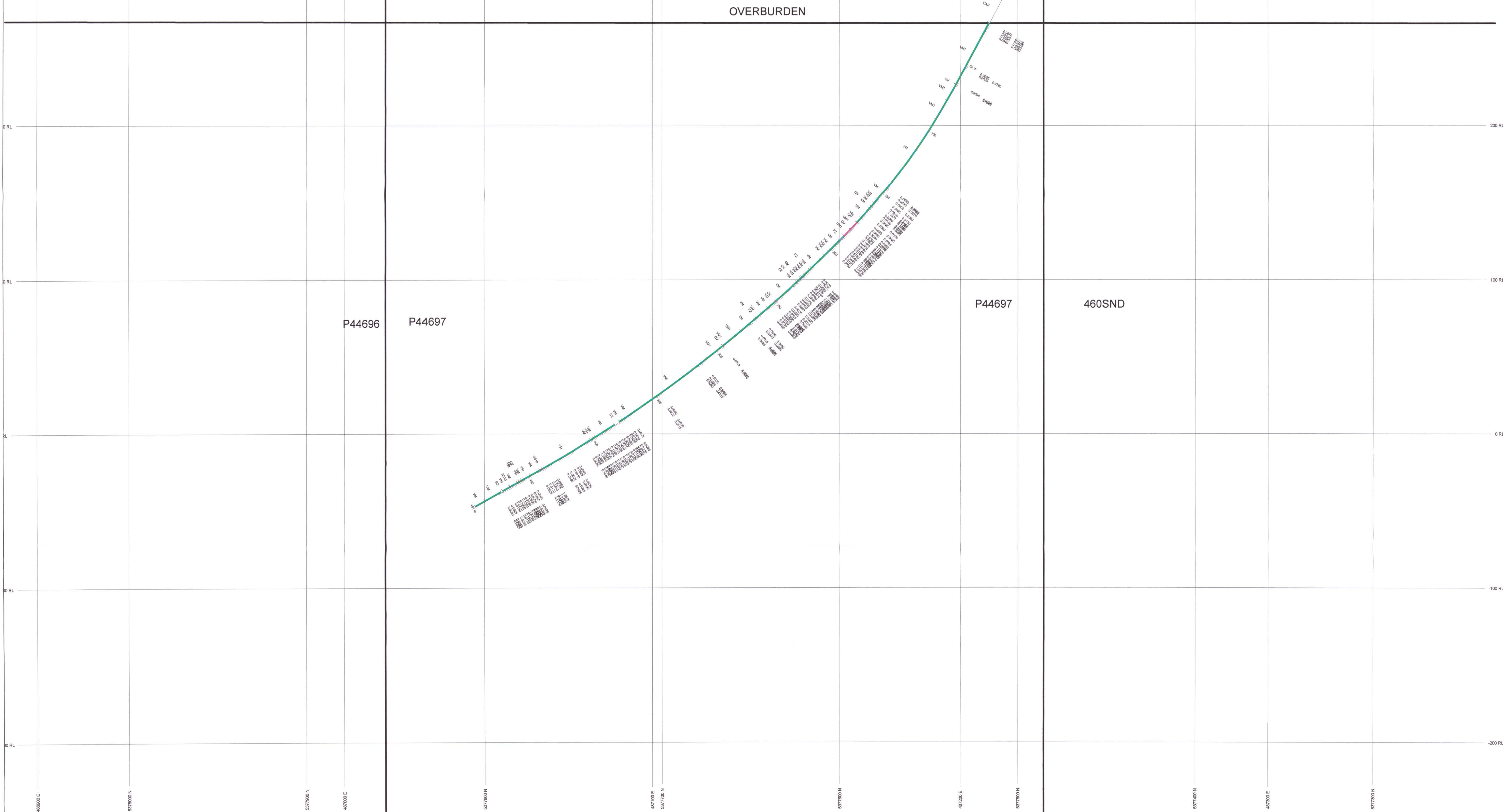
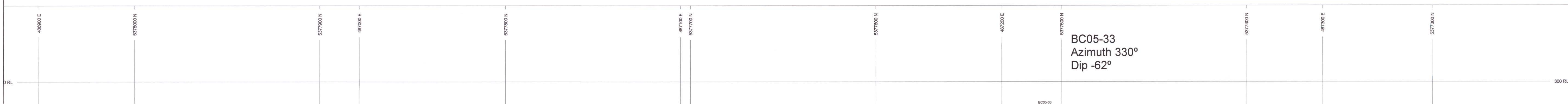
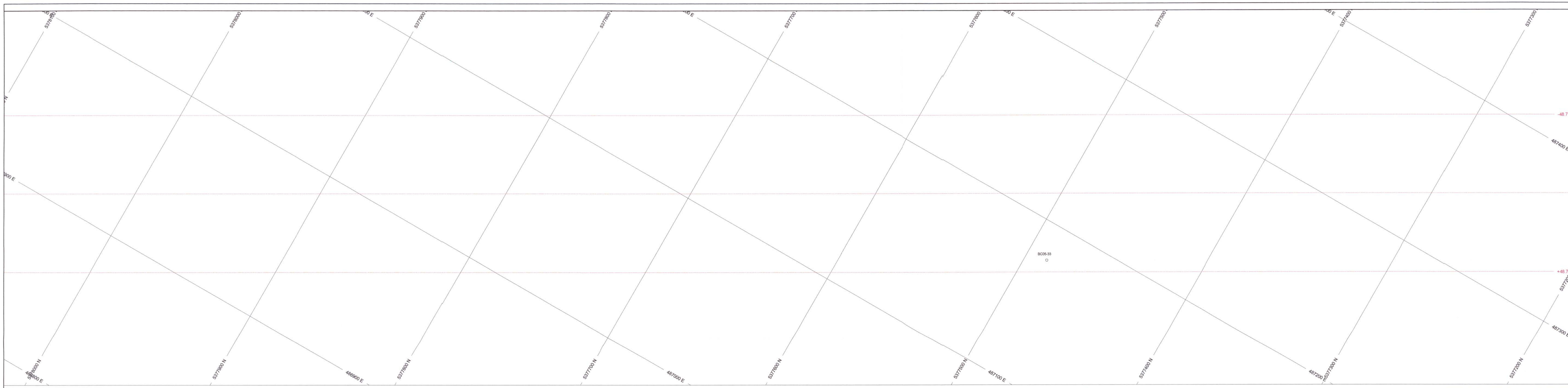
ROCK CODES	L/R	PAT	LABEL	DESCRIPTION
Lithology	L	CAS	Casing	
	L	FZ	Fault Zone	
	L	QV	Quartz Vein	
	L	FP12	Fallopia Porphyry	
	L	SA10	Graphitic Argillite	
	L	VM	Mafic Metasandstone	
	L	VM1	Hgt. Fe Basalts	
	L	UM1	Basaltic Komatiite	

ASSAYS	L/R	TEXT	
AL_AJ_3m	R	---	
POSTED TEXT	L/R	TEXT	ITEMS
Lithology	L/R	---	All

SECTION SPECS:	
REF. PT. E. N	487044 m 5377600 m
EXTENTS	887.6 m 425.2 m
SECTION TOP, BOT	392.3 m -275 m
TOLERANCE +/-	80 m

SCALE 1 : 1000
(m)

Porcupine Joint Venture
Bell Creek Property
DDH Section
BC05-32 & BC0537

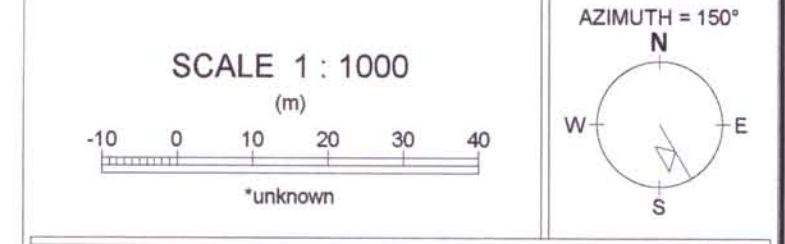


ROCK CODES	L/R	PAT	LABEL	DESCRIPTION
Library	L	CAS	Casing	
	FZ		Fault Zone	
	QV		Quartz Vein	
	GS10		Graphitic Argillite	
	VM		Mafic Metabasaltics	
	VM1		High Fe Basalts	
	UM1		Basaltic Komatiite	

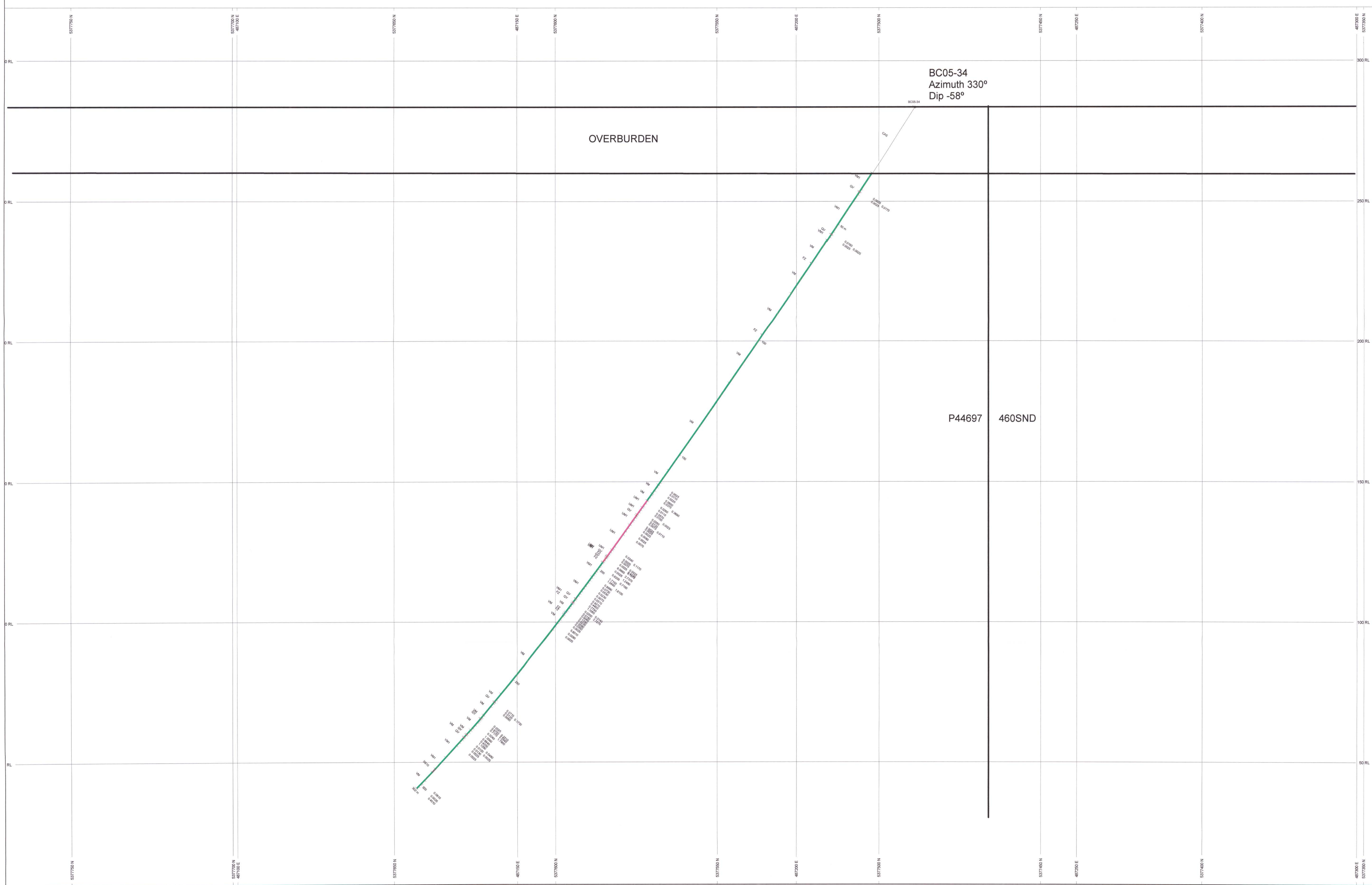
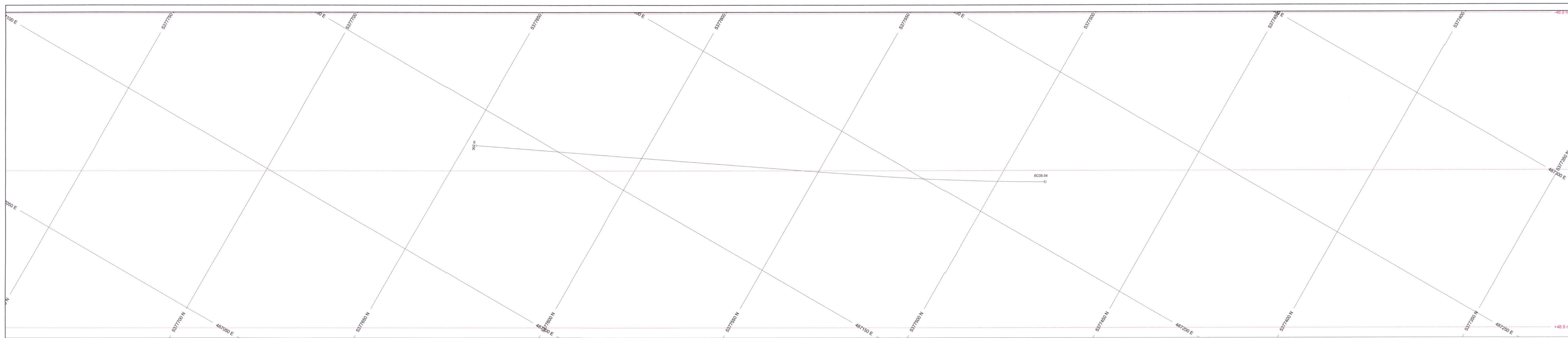
ASSAYS	L/R	TEXT
Library	R	Al ₂ O ₃

POSTED TEXT	L/R	TEXT	ITEMID
Library	A		AI

SECTION SPECS:
 REF. FT. E. N. 487132 m 5377650 m
 EXTENTS 987.6 m 566.4 m
 SECTION TOP, BOP 347.2 m -248.2 m
 TOLERANCE +/- 48.7 m



Porcupine Joint Venture
 Bell Creek Property
 DDH Section
 BC05-33



ROCK CODES	L	PAT	LABEL	DESCRIPTION
Unkn	L	CAS	Casing	
	L	FZ	Fault Zone	
	L	OV	Quartz Vein	
	L	SS10	Graphitic Argillite	
	L	VM	Multi-Metacherts	
	L	VM1	High Fe Basalts	
	L	VM1	Basaltic Komatiite	

ASSAYS	L	R	TEXT
ALCAL_Spec	L <td>R</td> <td></td>	R	
POSTED TEXT	L <td>R</td> <td>ITEMS</td>	R	ITEMS
Unkn	L <td>R</td> <td>All</td>	R	All

SECTION SPECS	
REF. PT. E. N	487180 m 5377560 m
EXTENTS	463.8 m 512.8 m
SECTION TOP BOT	339 m 636 m
TOLERANCE +/-	45.9 m

SCALE 1 : 500

(m)

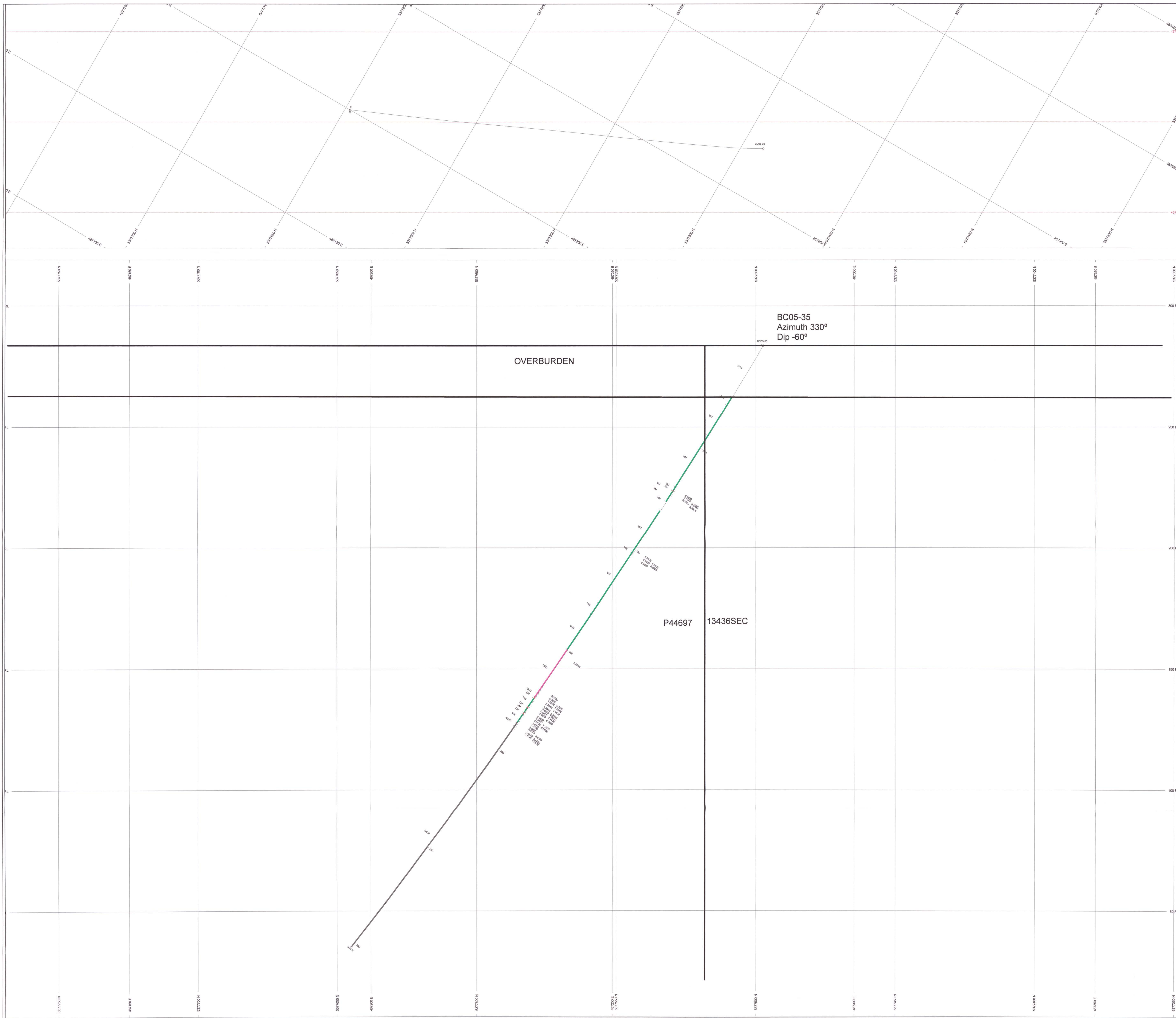
0 5 10 15 20

Unknown

AZMUTH = 150°

N
E
S
W

Porcupine Joint Venture
Bell Creek Property
DDH Section
BC05-34

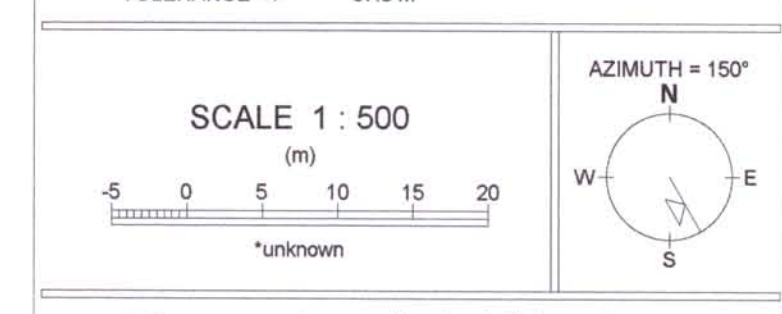


ROCK CODES	L/R	PAT	LABEL	DESCRIPTION
Lithology	L		CAS	Clay
			OV	Clay Ven
			SS10	Graphic Argilla
			VM	Mud-Metamorphic
			VM1	High Fe Basalts
			VM1	Basaltic Komatiite

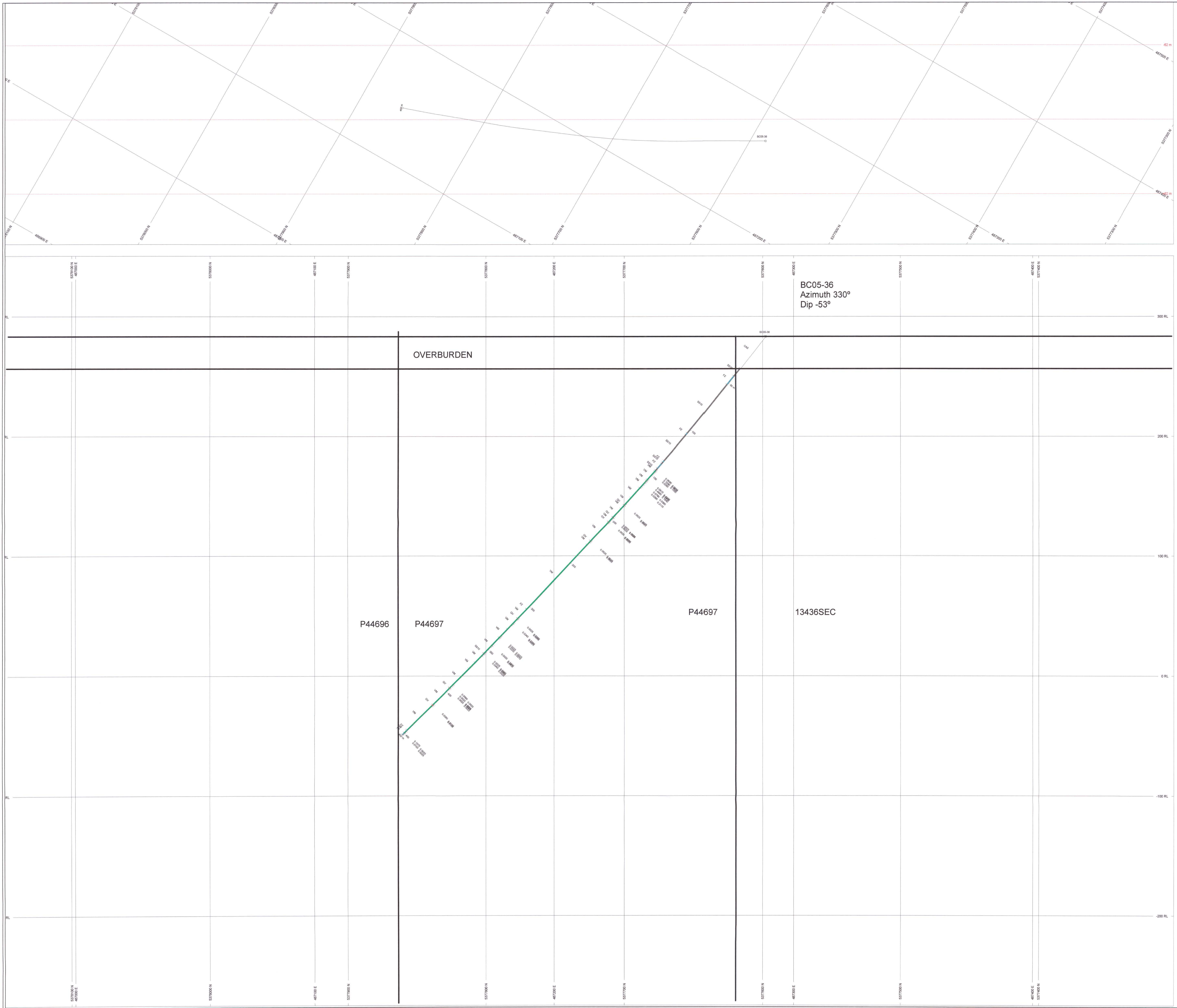
ASSAYS	L/R	TEXT
Au_AA_ppm	R	

POSTED TEXT	L/R	TEXT	ITEMS
Lithology			All

SECTION SPECS			
REF PT E N	487245 m	5377500 m	
DISTENTS	493.5 m	312.5 m	
SECTION TOP, BOT	319 m	6.36 m	
TOLERANCE +/-		37.3 m	



Porcupine Joint Venture
Bell Creek Property
DDH Section
BC05-35



BC05-36
Azimuth 330°
Dip -53°

OVERBURDEN

P44696

P44697

P44697

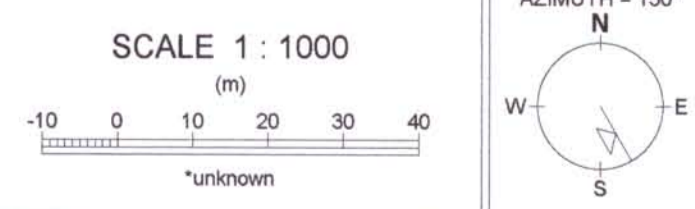
13436SEC

SYMBOL	LR	PAT	TEXT	DESCRIPTION
—	L	CAS	—	Clamp
—	L	FZ	—	Fault Zone
—	L	QV	—	Quartz Vein
—	L	S810	—	Graphitic Angite
—	L	M	—	Mafic Metasandstone

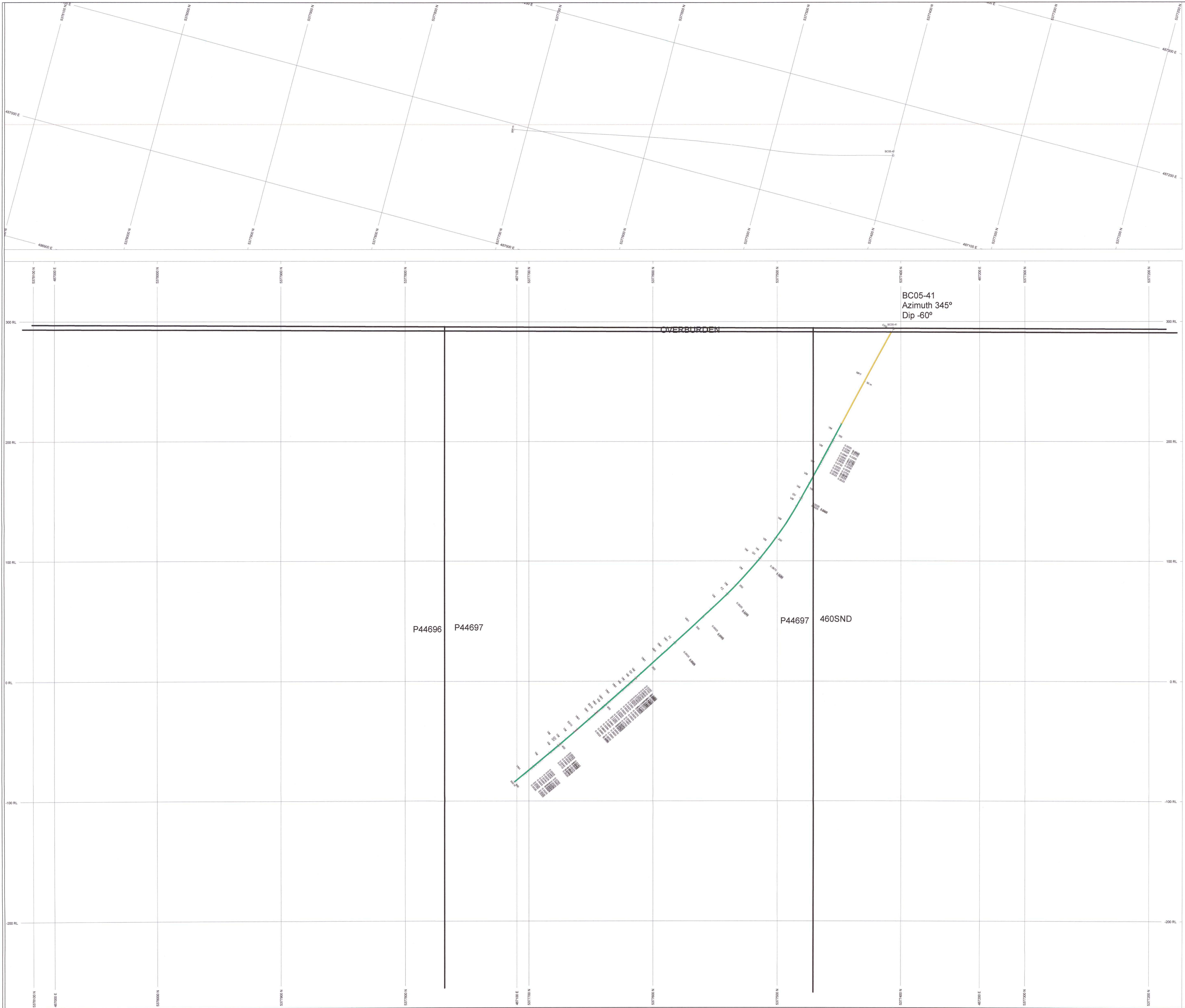
ASSAYS	LR	TEXT	ITEMS
Au, Ag, ppm	R	—	—

POSTED TEXT	LR	TEXT	ITEMS
—	L	—	All

SECTION SPECS:
REF. PT. E, N 48712.2 m 5377730.0 m
EXTENTS 987.6 m -426.2 m
SECTION TOP, BOT 350.2 m -275 m
TOLERANCE +/- 62 m



Porcupine Joint Venture
Bell Creek Property
DDH Section
BC05-36



BC05-41
Azimuth 345°
Dip -60°

OVERBURDEN

P44696

P44697

P44697

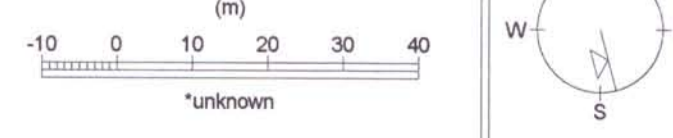
460SND

ROCK CODES	L/R	PAT	LABEL	DESCRIPTION
Lithology	L	CAS	Casing	Casing
		FZ	Fault Zone	Fault Zone
		QV	Quartz Vein	Quartz Vein
		SG10	Crystalline Gneiss	Crystalline Gneiss
		VM	Mafic Metavolcanics	Mafic Metavolcanics
		W1	High Fe Basalts	High Fe Basalts
		MP7	Dolomite Dyke	Dolomite Dyke

ASSAYS	L/R	TEXT
Au_AA_jgm	R	---

POSTED TEXT	L/R	TEXT	ITEMS
Lithology	L/R	---	---

SECTION SPECS
REF. PT. E, N 487118 m 5377850 m
EXTENTS 987.8 m 625.2 m
SECTION TOP, BOT 302.2 m -275 m
TOLERANCE +/- 100 m



Porcupine Joint Venture
Bell Creek Property
DDH Section
BC05-41