

584200E 584400E 584600E 584800E 585000E 585200E 585400E 585600E 585800E 586000E 586200E

5217000N 5216800N 5216600N 5216400N 5216200N 5216000N 5215800N 5215600N 5215400N 5215200N 5215000N 5214800N

Chambers Twp Strathy Twp

Maureen Lake

L-1600 W L-1700 W L-1800 W L-1900 W L-2000 W L-2100 W L-2200 W L-2300 W L-2400 W L-2500 W

4205113 4229486 4206417

3004969

Chambers Twp Strathy Twp

55845 55894 55920 55936 55949 55960 55974 55991 56013 56044 56090 56172 56341 56883

55000 subtracted from all readings

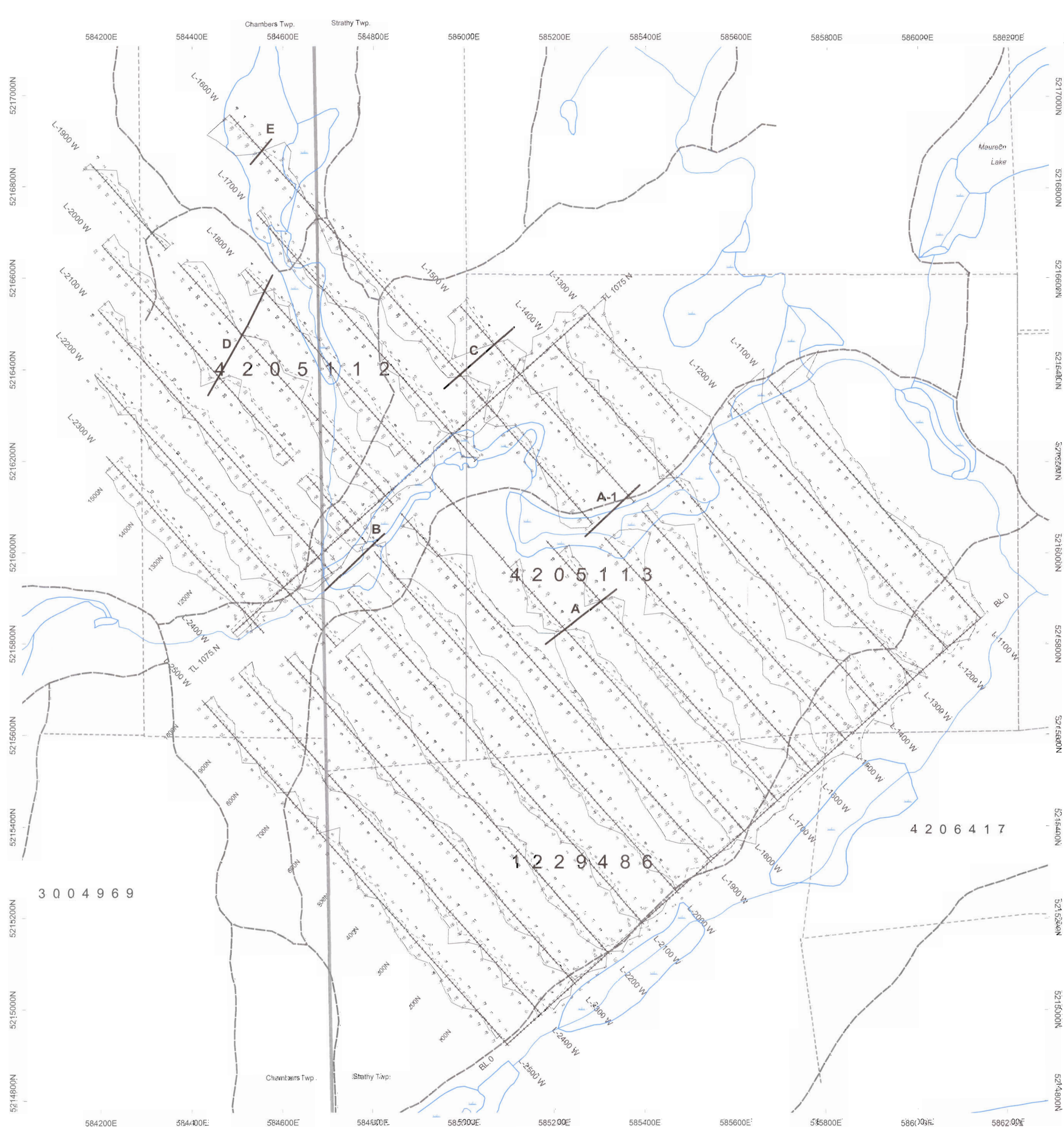
Scale 1:5000

100 0 200 300 (meters)

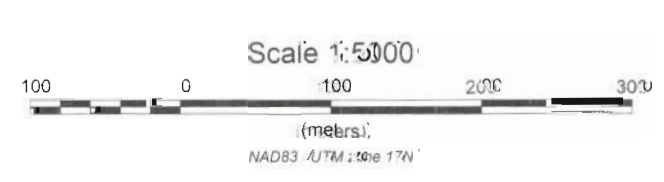
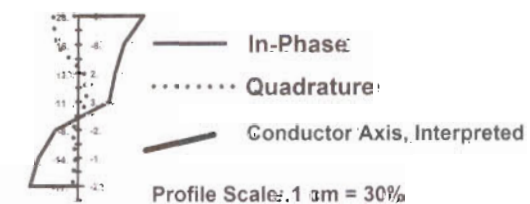
NAD83 / UTM zone 17N

Instruments:
 GEM Systems GSM-19 Magnetometer Serial #58479
 GEM Systems GSM-19 Magnetometer Serial #56700
 Scintrex EDA Omni IV Base Station Serial #255228
 Geonics EM-16 VLF Receiver Serial #10585
 VLF Station: NAA 24.0 kHz Cutler Maine
 APEX Maxmin I Serial #5309 - 150 meter cable spacing

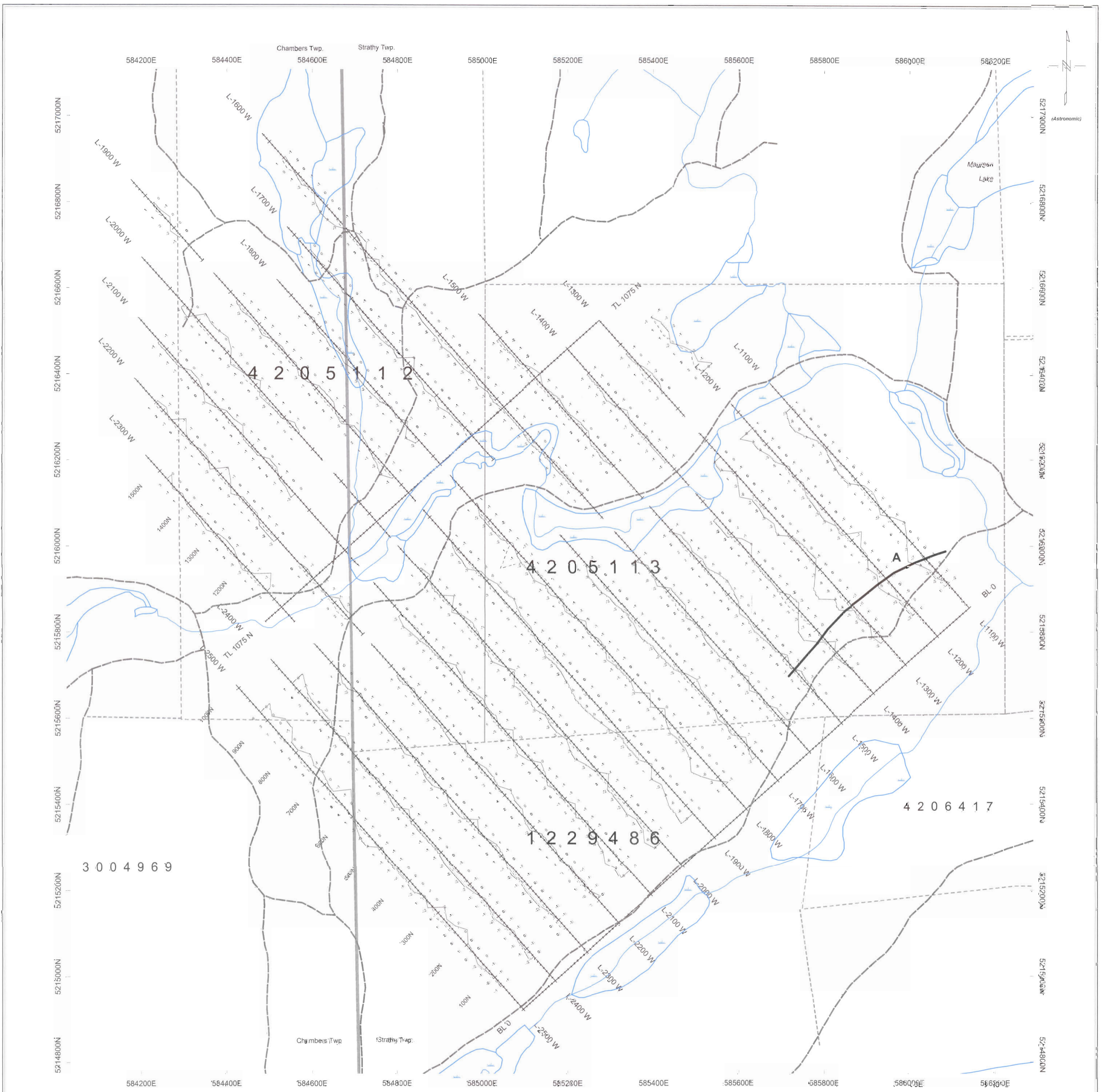
Aura Resources Corp.		
O'Connor Property - Strathy Grid		
Strathy and Chambers Township, Ontario Sudbury Mining Division		
Ground Magnetometer Survey Total Field - Contours		
Data Processing and Interpretation by: Meegwich Consultants Inc.	Scale 1:5000 June 2007	NTS 31 M/4



Instruments:
 GEM Systems GSM-19 Magnetometer Serial #58479
 GEM Systems GSM-19 Magnetometer Serial #56700
 Scintrex EDA Omni IV Base Station Serial #255228
 Geonics EM-18 VLF Receiver Serial #10555
 VLF Station: NAA 24.0 KHz Cutler Maine
 APEX Maximp1 Serial #5309 - 150 meter cable spacing



Aurora Resources Corp.	
O'Connor Property - Strathy Grid	
Strathy and Chambers Township, Ontario Susbury Mining Division	
VLF-EM Survey Profiles of In-Phase and Quadrature	
Data Processing and Interpretation by:	Scale 1:5000 NTS 31 M/4
Meegwich Consultants Inc.	June 2017

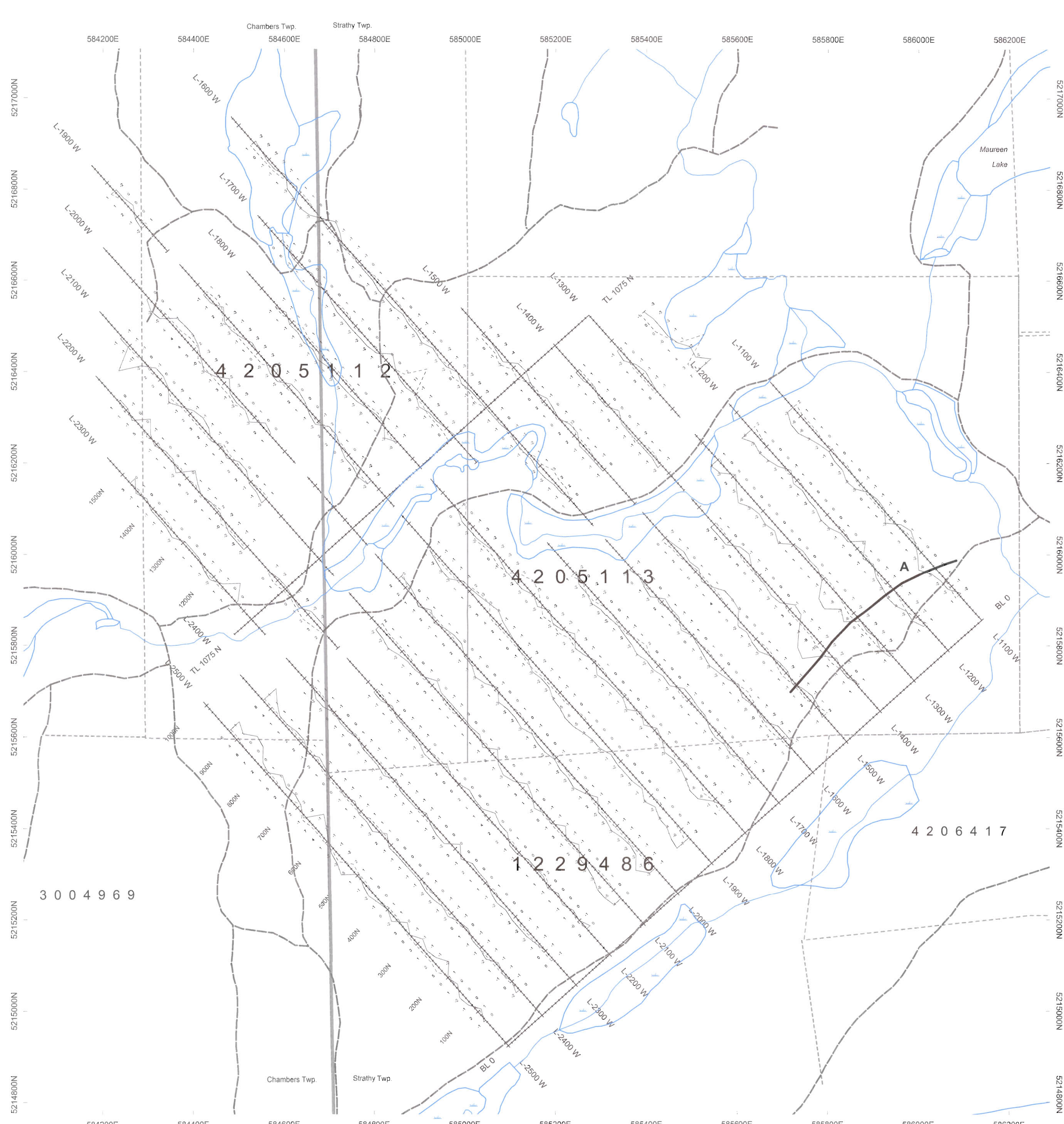


Instruments:
 GEM Systems GSM-19 Magnetometer Serial #58479
 GEM Systems GSM-19 Magnetometer Serial #58700
 Scintrex EDA Omni-IV Base Station Serial #255228
 Geonics EM-18 VLF Receiver Serial #10585
 VLF Station: NAA 24.0 kHz Cutler Maine
 APEX Maxmin I Serial #5309 - 150 meter cable-spacing

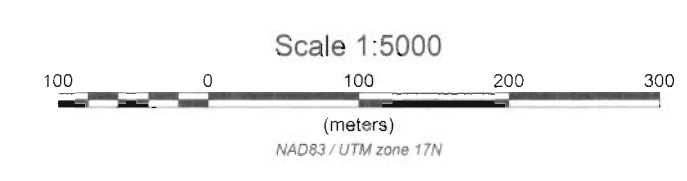
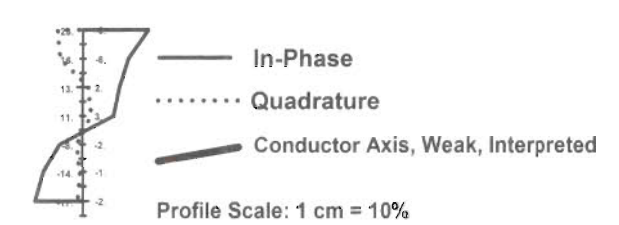
— In-Phase
 Quadrature
 — Conductor-Axis, Weak, Interpreted
 Profile Scale: 1 cm = 10%



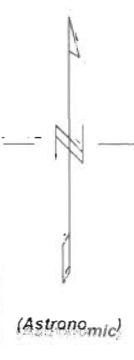
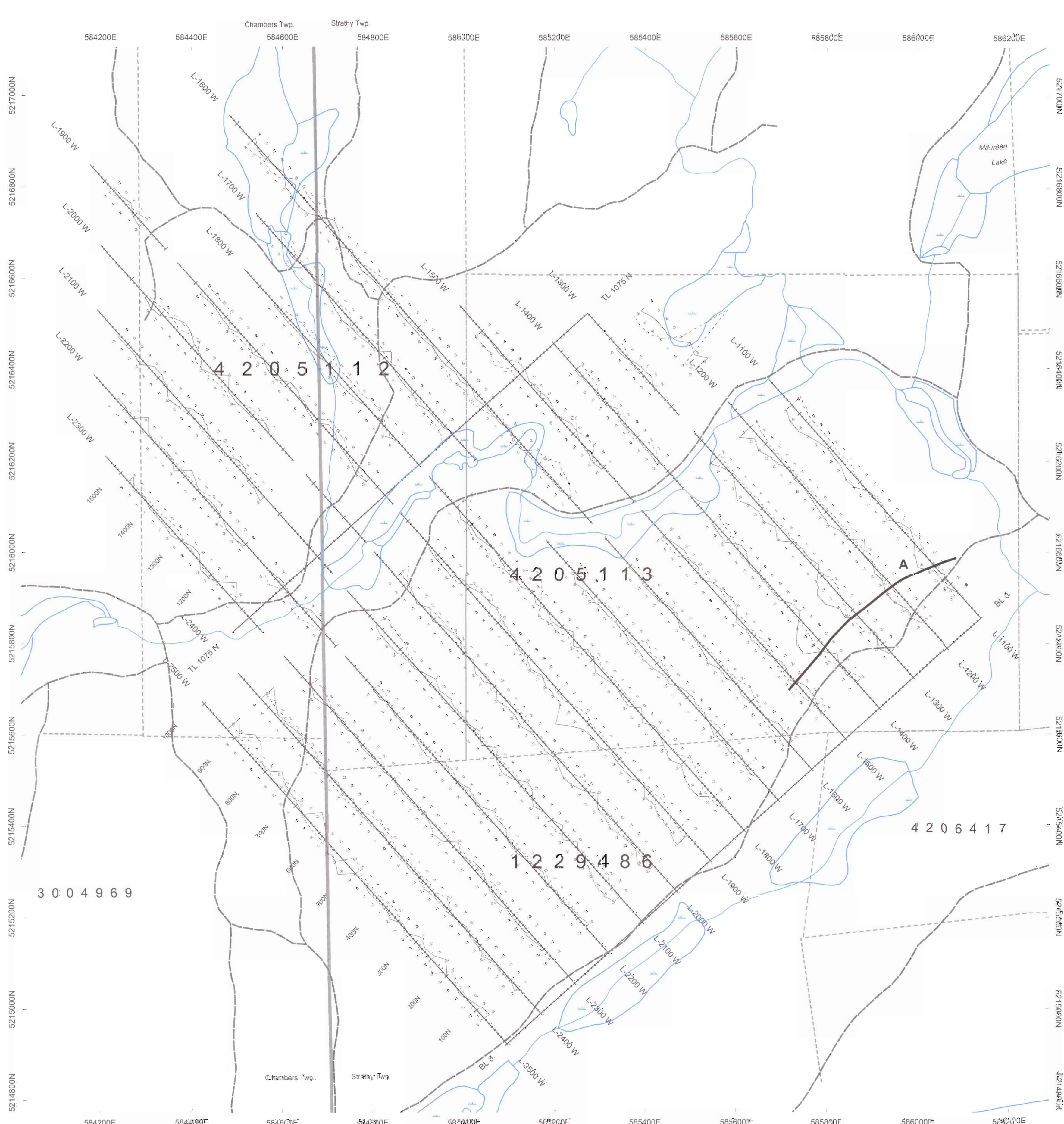
Aura Resources Corp.		
O'Connor Property - Strathy Grid		
Strathy and Chambers Township, Ontario Sudbury Mining Division		
HEM Survey - 440 Hz - 150 Meter Cable Spacing Plots of the In-Phase and Quadrature		
Data Processing and Interpretation by:	Scale 1:5000	NTS: 30' x 15'
Meegwich Consultants, Inc.	June 2007	



Instruments:
 GEM Systems GSM-19 Magnetometer Serial #58479
 GEM Systems GSM-19 Magnetometer Serial #56700
 Scintrex EDA Omni IV Base Station Serial #255228
 Geonics EM-16 VLF Receiver Serial #10585
 VLF Station: NAA 24.0 kHz Cutler Maine
 APEX Maxmin I Serial #5309 - 150 meter cable spacing

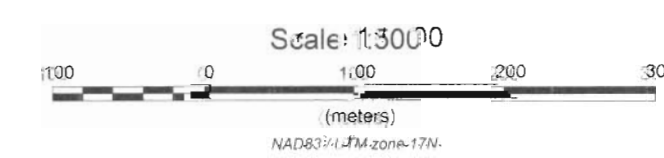


Aura Resources Corp.		
O'Connor Property - Strathy Grid		
Strathy and Chambers Township, Ontario Sudbury Mining Division		
HLEM Survey - 1760 Hz. - 150 Meter Cable Spacing Profiles of the In-Phase and Quadrature		
Data Processing and Interpretation by: Meegwich Consultants Inc.	Scale 1:5000 June 2007	NTS 31 M/4

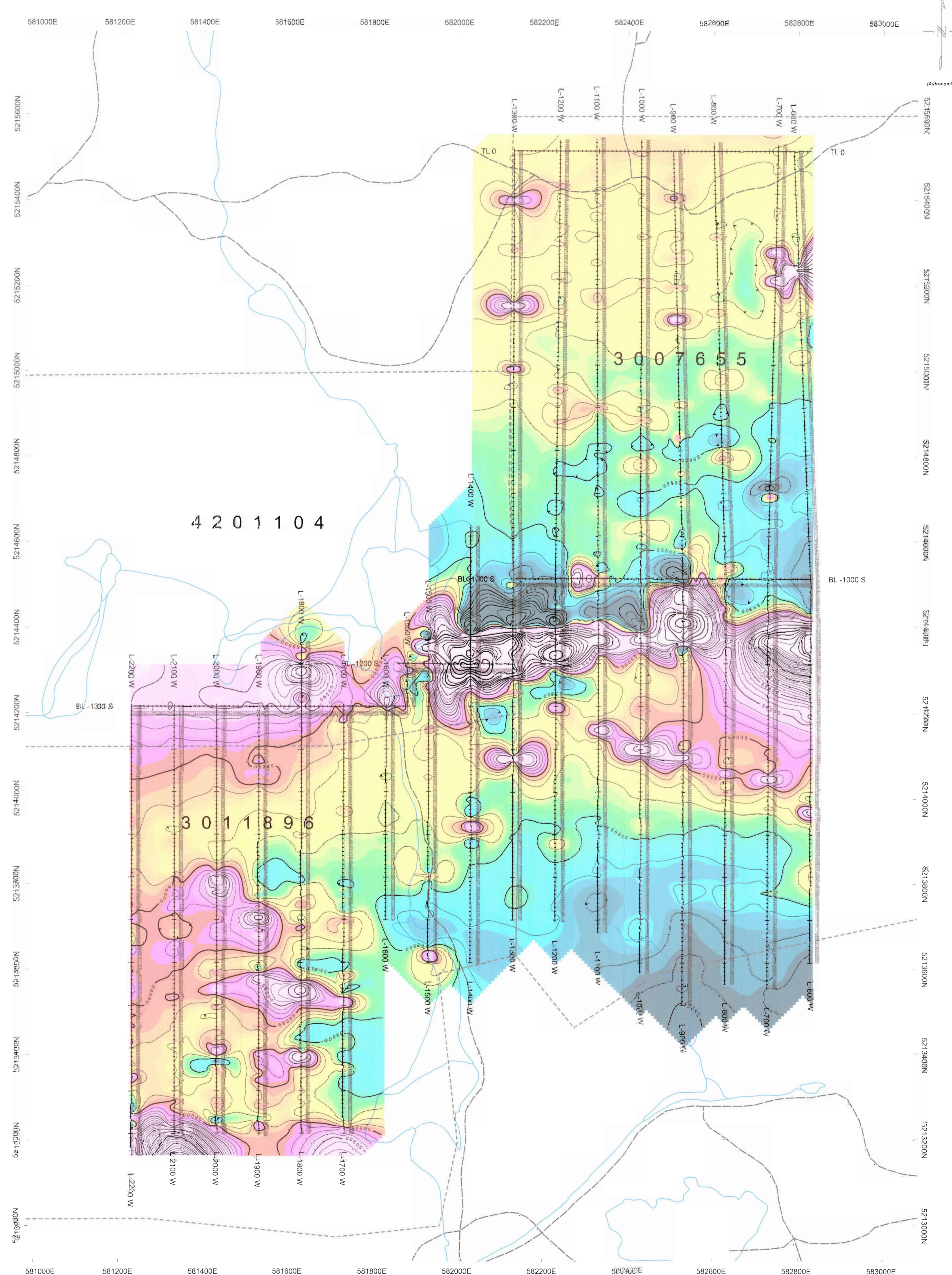


Instruments:
 GEM Systems GSM-19 Magnetometer Serial 458479
 GEM Systems GSM-19 Magnetometer Serial 456700
 Scintrex EDA Omni IV Base Station Serial #255228
 Geonics EM-16 VLF Receiver Serial #10585
 VLF Station: NAA 24.0 kHz Cutler Maine
 APEX Maxmin I Serial #5309 - 150 meter cable spacing

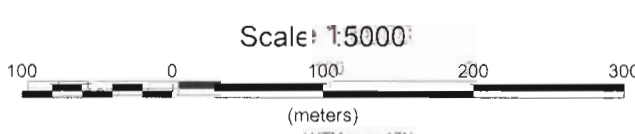
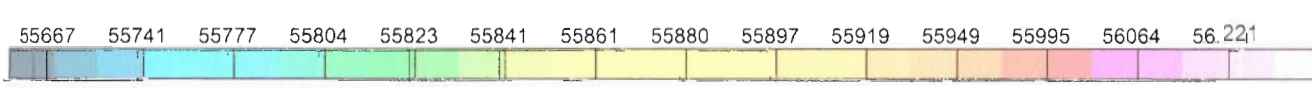
— In-Phase
 Quadrature
 — Conducton Axis, Weak, Interpreted
 Profile Scale: 1:1cm = 10%



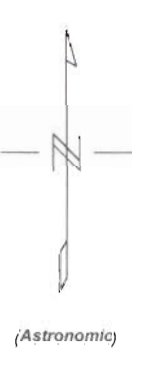
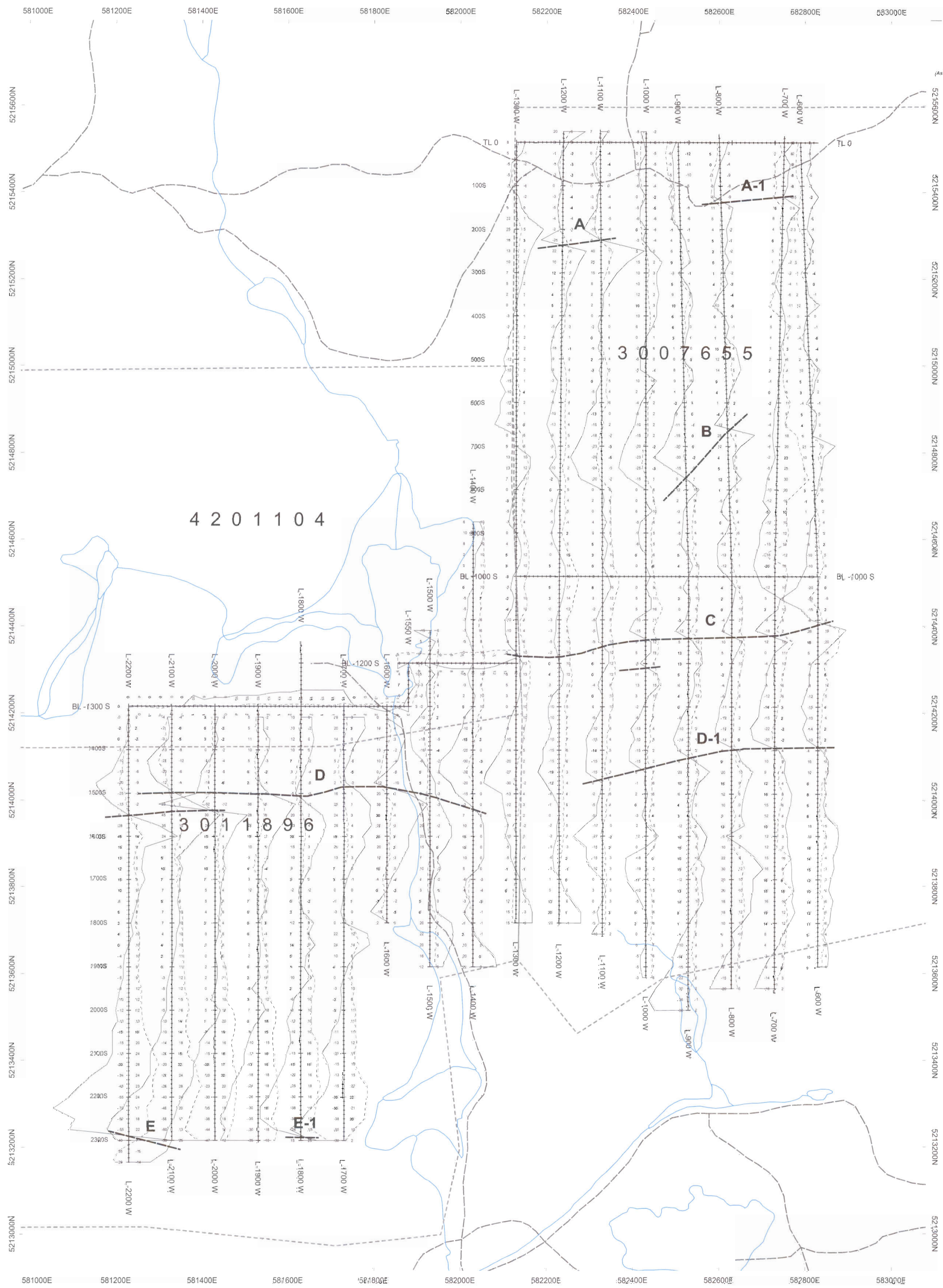
Aura Resources Corp.		
O'Connor Property - Strathy Grid		
Strathy and Chambers Townships, Ontario Sudbury Mining Division		
HLEM Survey - 3920 m - 150 Meter Cable Spacing Profiles of the In-Phase and Quadrature		
Data Processing and Interpretation by:	Scale: 1:50.00	NTS 3x 1/4
Mergwich Consultants Inc.	July 2006	



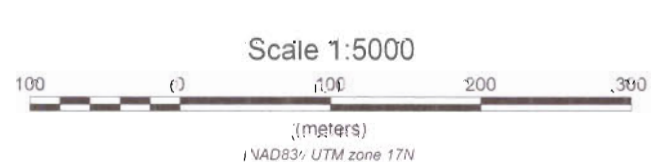
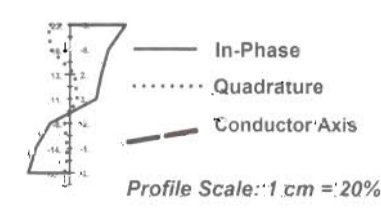
Instruments:
 GEI Systems GSM-19 Magnetometer Serial #58479
 Scripps EDA Omni IV Base Station Serial #255228
 Geonics EM-16 VLF Receiver Serial #10585
 VLF Station: NAK 74.0 kHz Cut: 10 m/s
 APB/Maxmin: 130 m/s #5309 - 150 Meter Cable Spacing



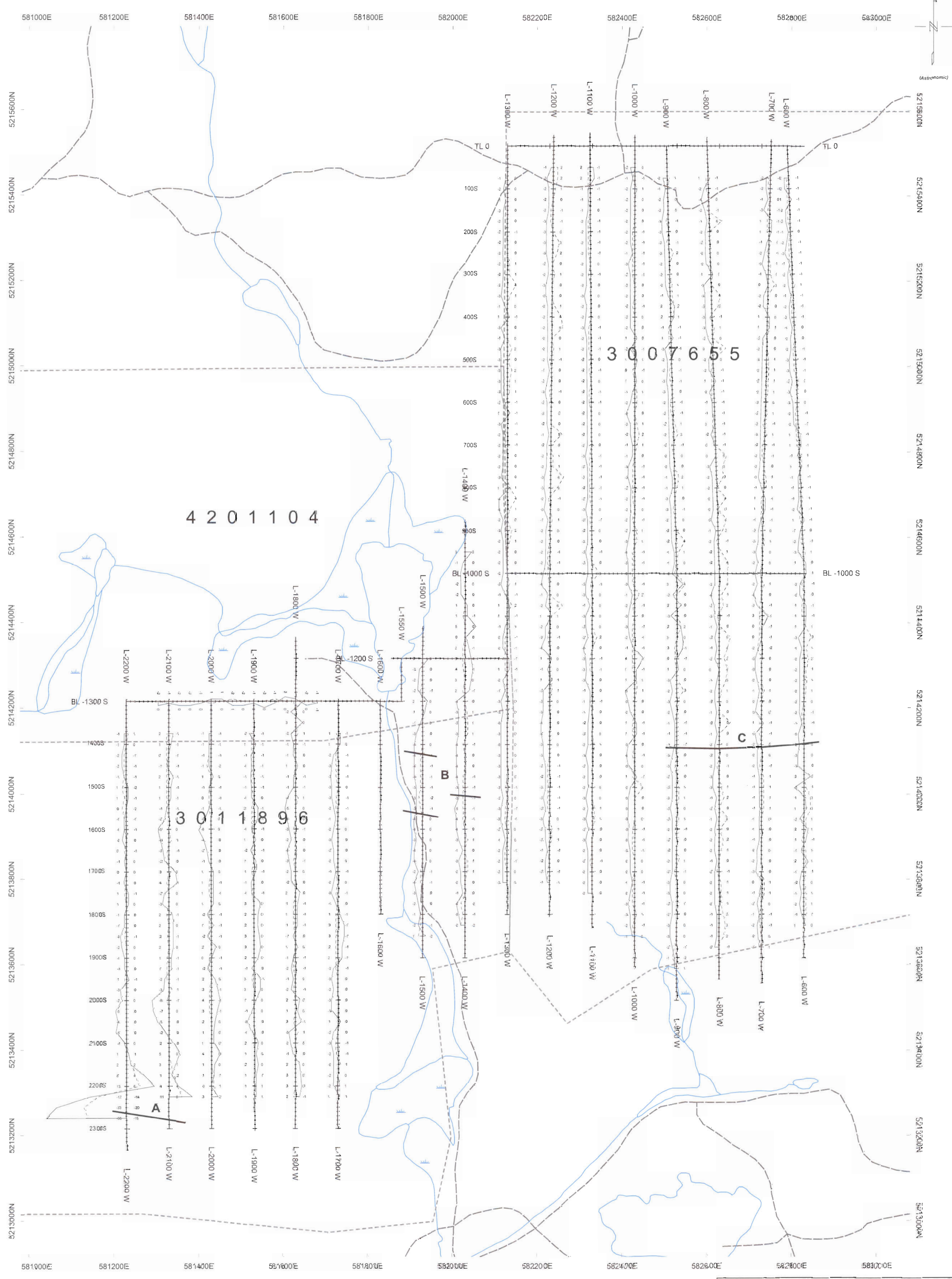
Aura Resources Corp.		
O'Connor Property - Chambers Grid		
Chambers Township, Ontario Sudbury Mining Division		
Ground Magnetometer Survey Total Field Contours		
Data Processing and Interpretation by:	Scale 1:5000	NTS 31 M/4
Meegwich Consultants Inc.	June 2007	



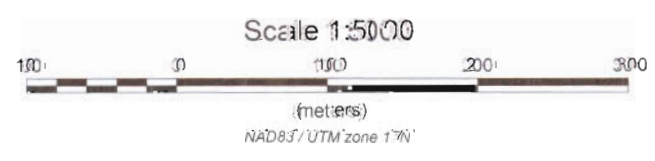
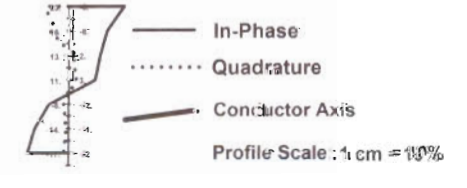
Instruments:
 GEM Systems GSM-19 Magnetometer Serial #58479
 Scintrex EDA Omni IV Base Station Serial #255228
 Geonics EM-16 VLF Receiver Serial #10585
 VLF Station: NAA 24.0 kHz Cutler Maine
 APEX Maxmin I Serial #5309 - 150 Meter Cable Spacing



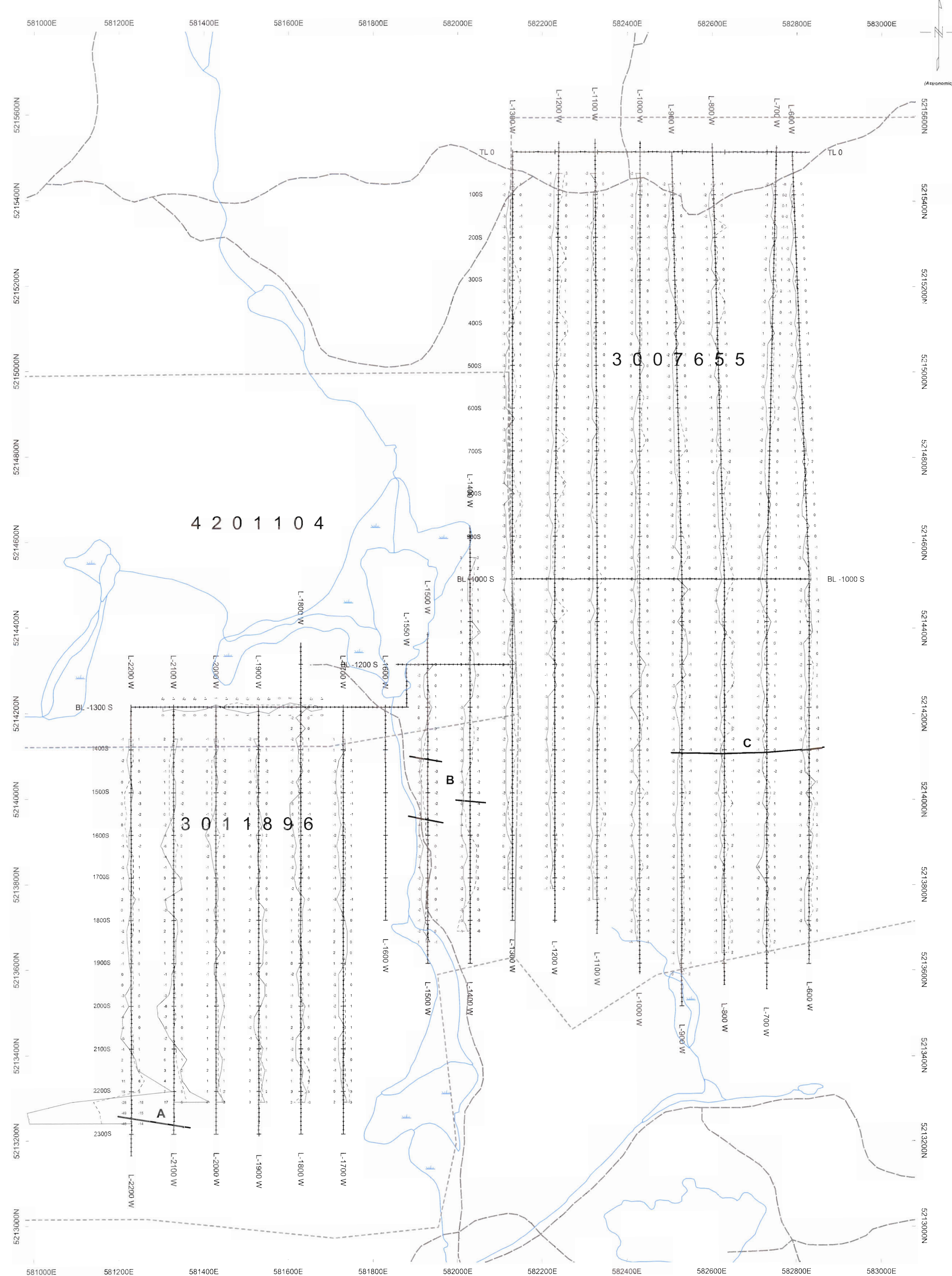
Aura Resources Corp.		
O'Connor Property - Chambers Grid		
Chambers Township, Ontario Sudbury Mining Division		
VLF - EM Survey Profiles of the In-Phase and Quadrature		
Data Processing and Interpretation by:	Scale 1:5000	NTS 31 M/4
Meegwich Consultants Inc.	June 2007	



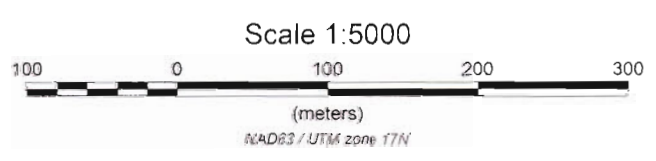
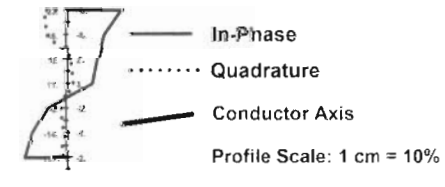
Instruments:
 GEM Systems GSM-53 Magnetometer Serial #58479
 Scintrex EDA Omni IV Base Station Serial #255228
 Geonics EM-16 VLF Receiver Serial #10585
 VLF Station: NAA 24.0 kHz Cadiz Maine
 APEX Maxmin 1 Serial #5309 - 150 Meter Cable Spacing.



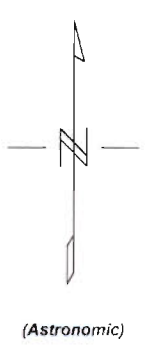
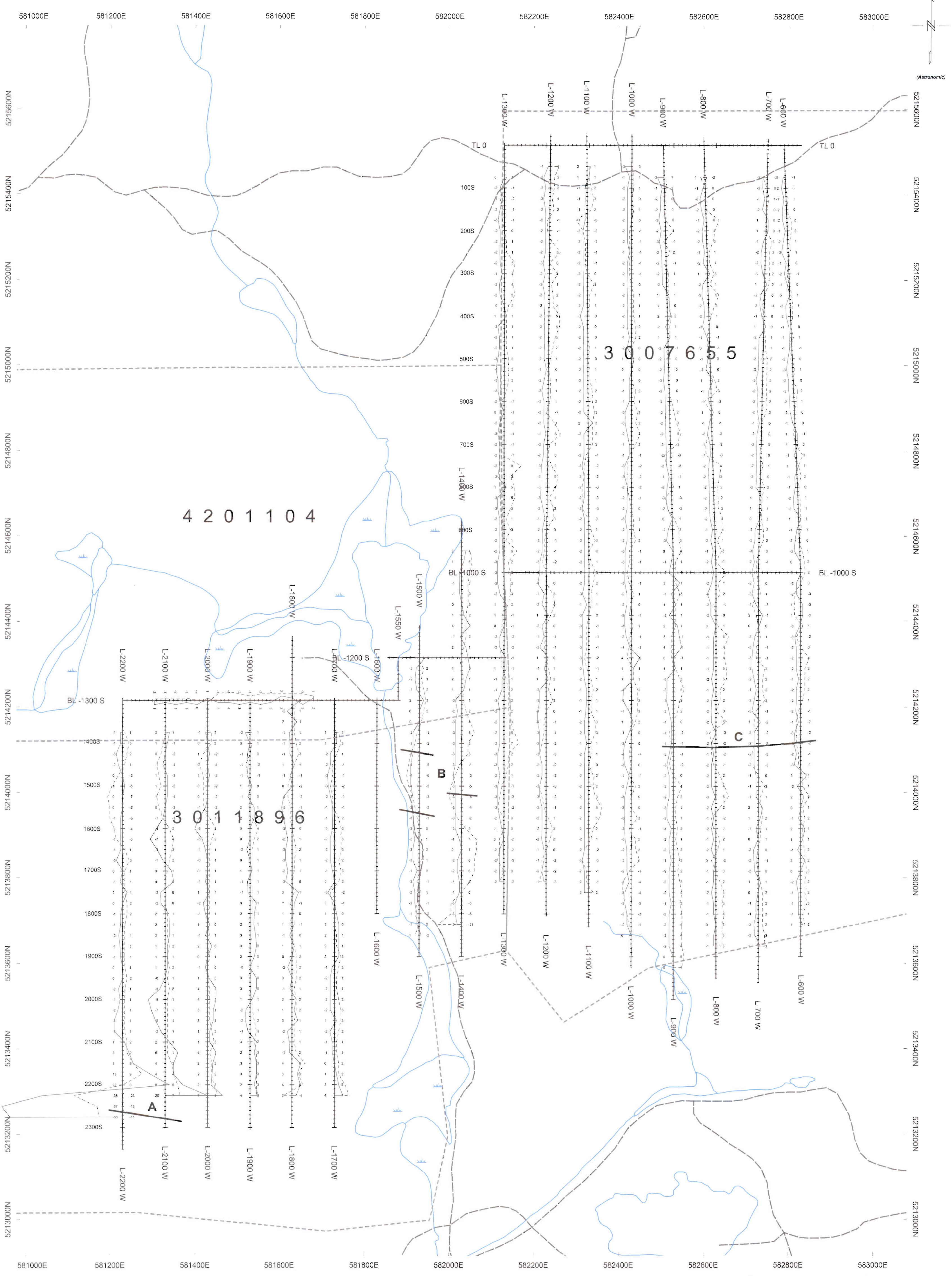
Aura Resources Corp.		
O'Connor Property - Chambers Grid		
Chambers Township, Ontario Sudbury Mining Division		
HLEM Survey - 440 Hz - 150 Meter Cable Spacing Profiles of the In-Phase and Quadrature		
Data Processing and Interpretation by: Meegwich Consultants Inc.	Scale 1:5000 June 2007	N/TS 31 M/4



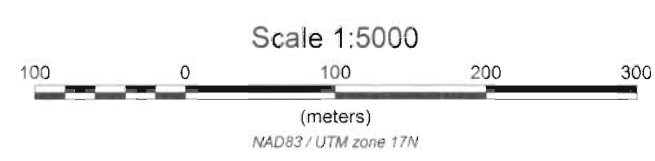
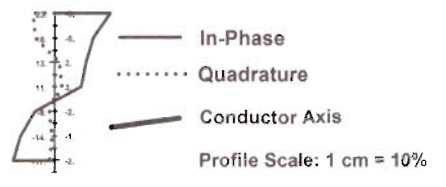
Instruments:
 GEM Systems GSM-19 Magnetometer Serial #58479
 Scintrex EDA Omni IV Base Station Serial #255228
 Geonics EM-16 VLF Receiver Serial #10585
 VLF Station: NAA 24.0 kHz Cutler Maine
 APEX Maxmin I Serial #5309 - 150 Meter Cable Spacing



Aura Resources Corp.		
O'Connor Property - Chambers Grid		
Chambers Township, Ontario Sudbury Mining Division		
HLEM Survey - 1760 Hz - 150 Meter Cable Spacing Profiles of the In-Phase and Quadrature		
Data Processing and Interpretation by:	Scale 1:5000	NTS 31 M/4
Meegwich Consultants Inc.	June 2007	



Instruments:
 GEM Systems GSM-19 Magnetometer Serial #58479
 Scintrex EDA Omni IV Base Station Serial #255228
 Geonics EM-16 VLF Receiver Serial #10585
 VLF Station: NAA 24.0 kHz Cutler Maine
 APEX Maxmin I Serial #5309 - 150 Meter Cable Spacing



Aura Resources Corp.		
O'Connor Property - Chambers Grid		
Chambers Township, Ontario Sudbury Mining Division		
HLEM Survey - 3520 Hz. - 150 Meter Cable Spacing Profiles of the In-Phase and Quadrature		
Data Processing and Interpretation by:	Scale 1:5000	NTS 31 M/4
Meegwich Consultants Inc.	June 2007	