

Channel Cut
Sample Number

9+80S

9+85S

9+90S

9+95S

L.10+00S

0+95W

0+90W

422
423
424
425
420
418
419
421
410
411
412
413
414
415
416
417
408
409
404
405
406
407

397
398
399
400
401
402
403

384
385
386
387
388
389
390
391
392
393
394
395
396

354
355
356
357
358
359
360
361
362
363
364

339
340
341
342
343
344
345
346
347
333
334
335
336
337
338

349
352
348
350
351
353

325
326
327
328
329
330
331
332

365
366
367
368
369
370
371
372
373
374
375
376
377
378
379
380

381
382
383

426
427
428
429
430
431
432
433
434
435

436
437
438
439
440
441
442
443
444

SAMPLE LOCATION MAP
Trench 9+80S to 10+00S
SUBURY INC.
Tudor Gold Project
Tudor Twp., Ontario
Lot 6, Concession XIII N. 1/2 820720



10+00S

M05+0

10+05S

10+10S

10+15S

10+20S

10+25S

10+30S

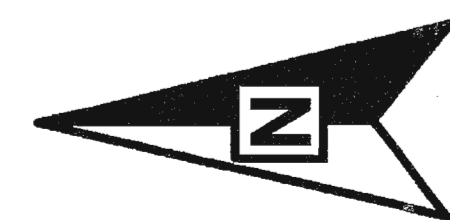
10+35S

10+40S

10+45S

10+50S

0+60W



312
313
314
315
316
317
318
319
320
321
322
323
324

305
306
307
308
309
310
311

289
291
293
295
297
299
301
303

281
282
283
284
285
286
287
288

274
275
276
277
278
279
280

257
258
259
260
261
262
263
264
265

249
250
251
252
253
254
255
256

243
244
245
246
247
248

224
225
226
227
228
229
230
231
232
233
234
235
236
237
238
239
240
241
242

213
214
215
216
217
218
219
220
221
222
223

208
209
210
211
212

200
201
202
203
204
205
206
207

146
147
148
149
150
151
152
153
154
155
156
157
158
159
160
161
162
163

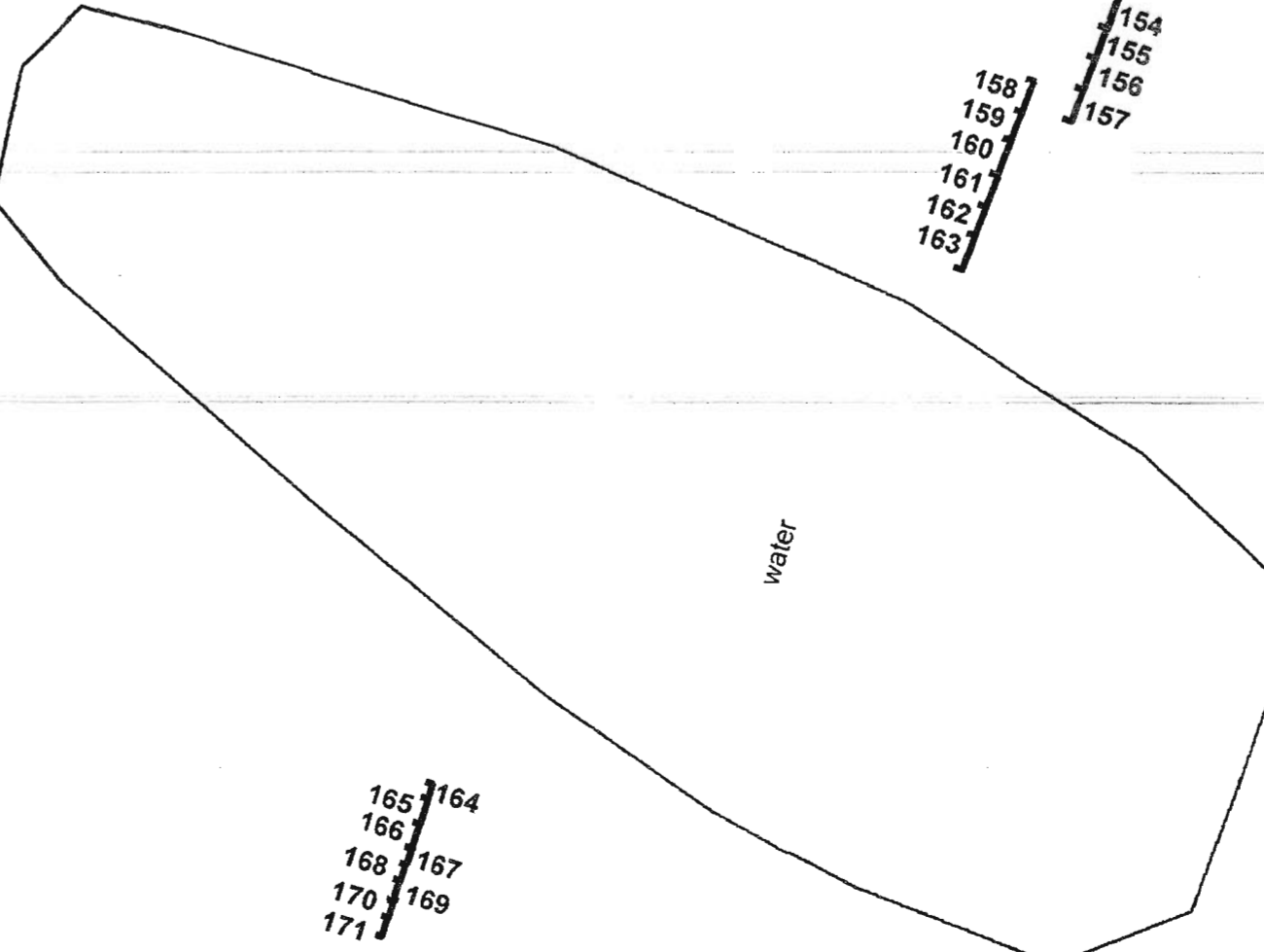
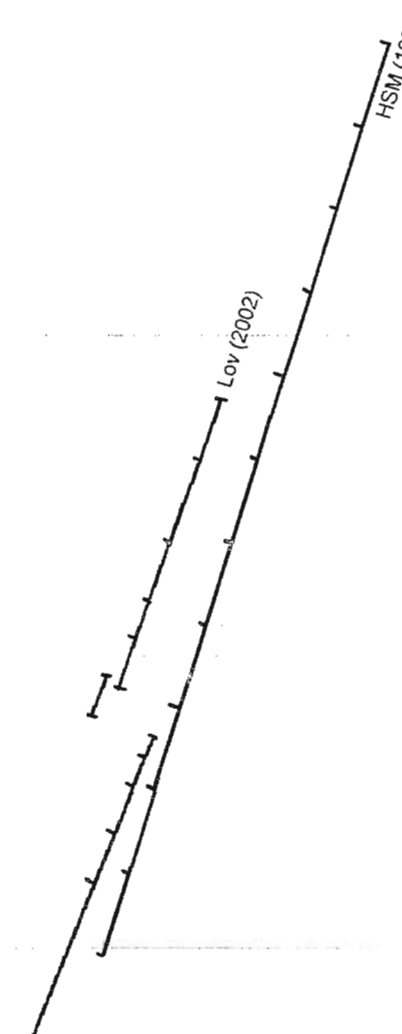
121
122
123
124
125
126
127
128
129
130
131
NS
132
133
134
135
136
137
138
139

113
114
115
116
117
118
119
120

105
106
107
108
109
110
111
112

100
101
102
103
104

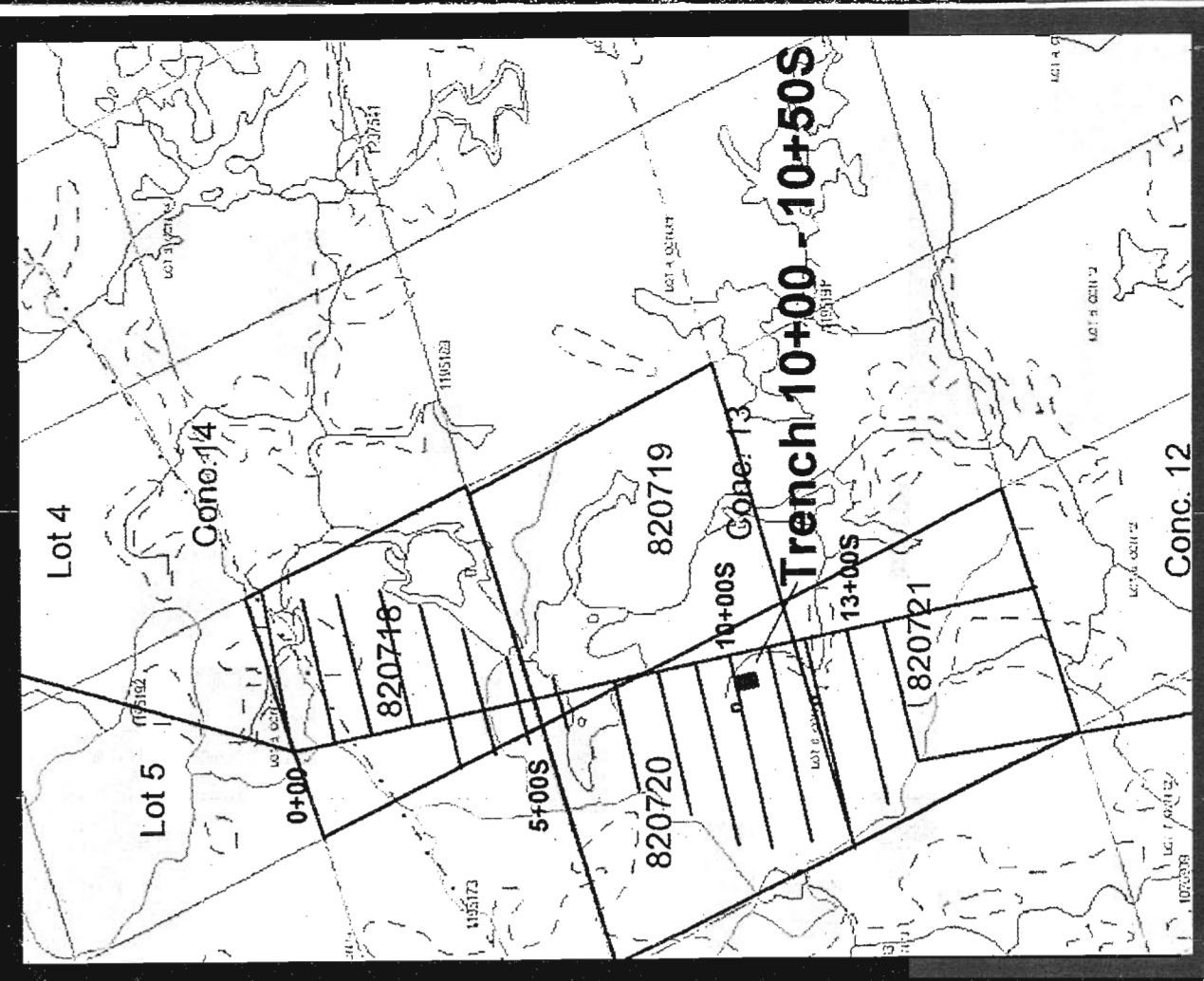
164
165
166
167
168
169
170
171



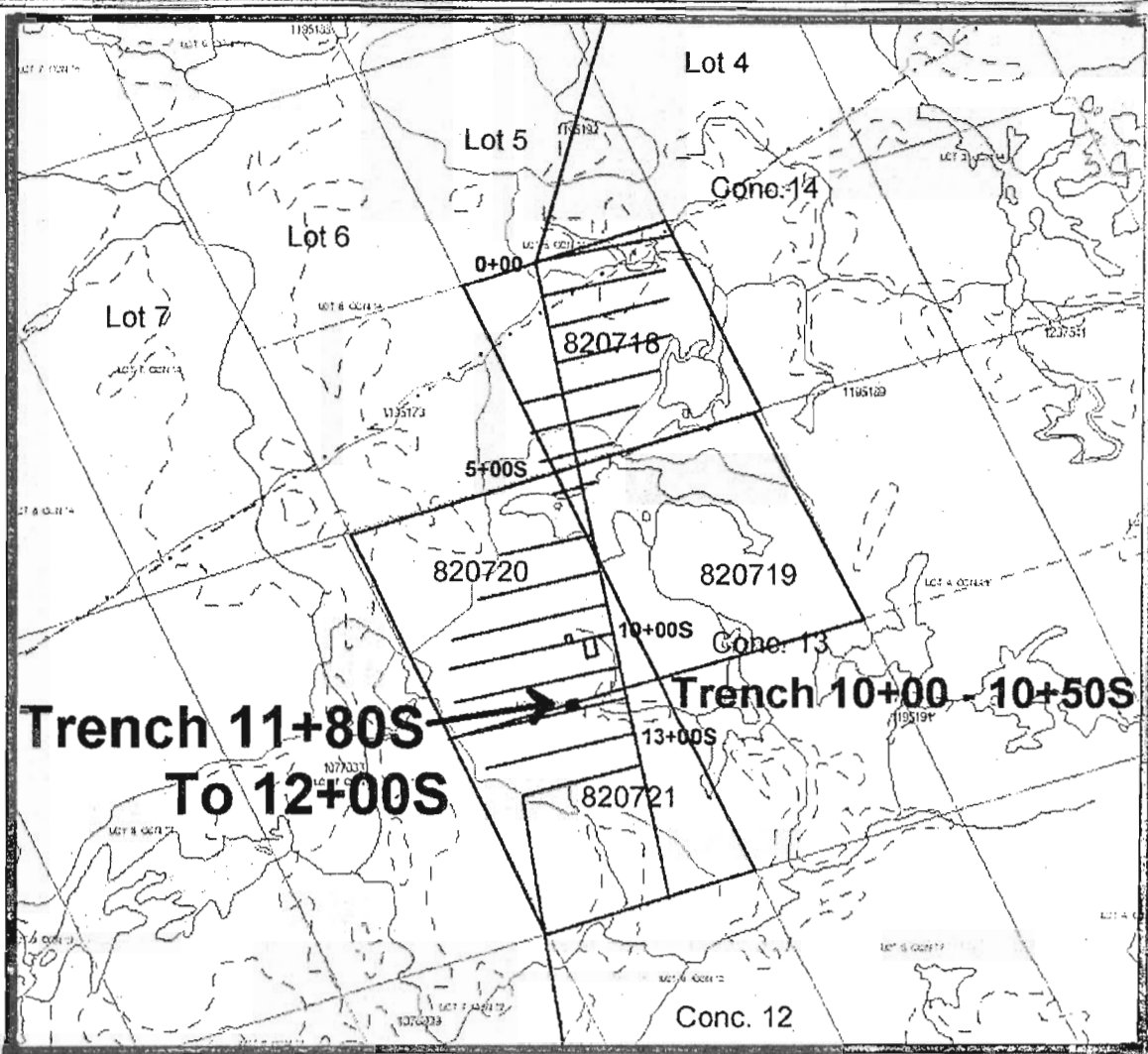
Channel Cut

Sample Number

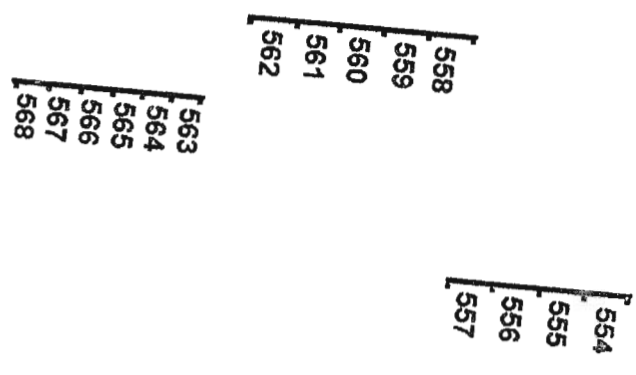
203



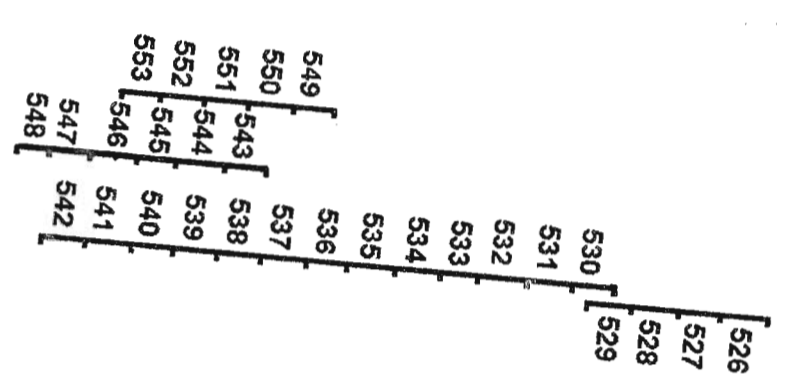
SAMPLE LOCATION MAP
Trench 10+00S to 10+50S
SUBURY INC.
Tudor Gold Project
Tudor Twp., Ontario
Lot 6, Concession XIII N. 1/2 820720



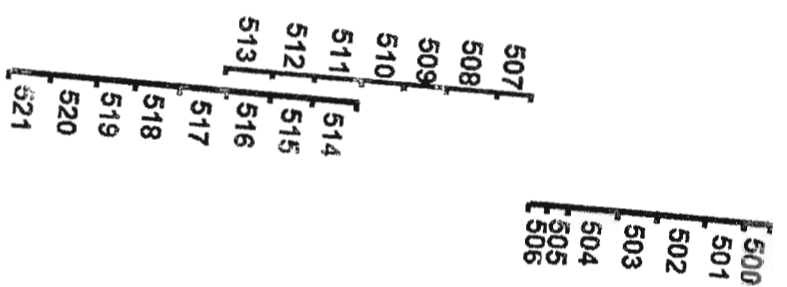
11+80S



11+85S



11+90S



11+95S



Channel Sample
564 Sample Number

L.12+00S ———— 1+20W ———— 1+15W



SAMPLE LOCATION MAP
TRENCH 11+80S TO 12+00S
SUBURY INC.
Tudor Gold Project
Tudor Twp., Ontario
Lot 6, Concession XIII S. 1/2 820721

26+30S
4961236mN

4961235mN

4961234mN

4961233mN

4961232mN

4961231mN

4961230mN

4961229mN

4961228mN

297086mE

297087mE

297088mE

297089mE

297090mE

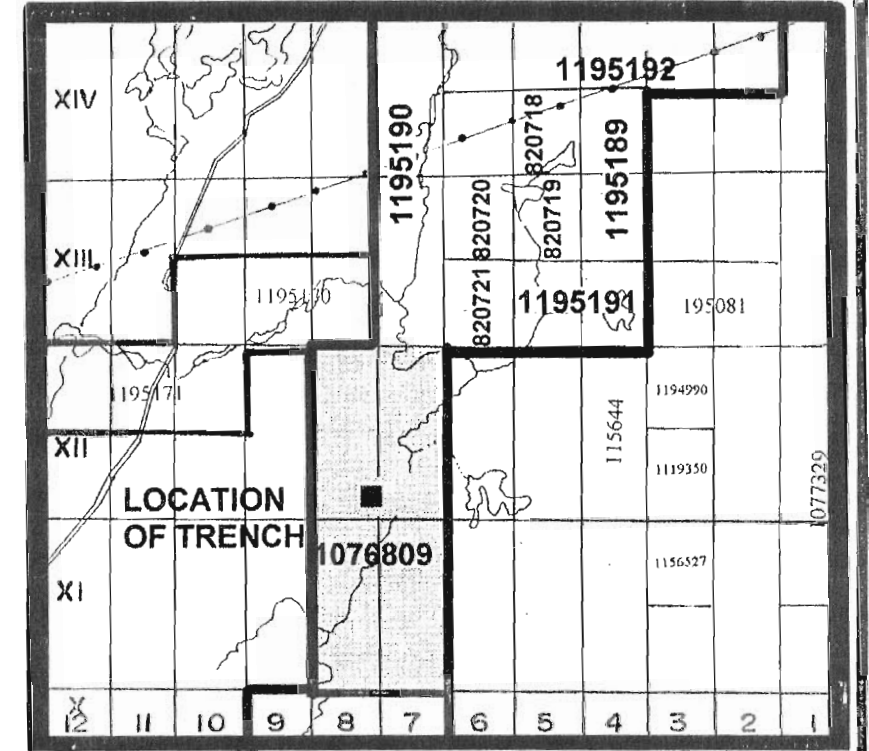
600
601
602
603
604

623
624
625

605
606
607
608

609
610
611
612
613
614
615
616
617
618

619
620
621
622

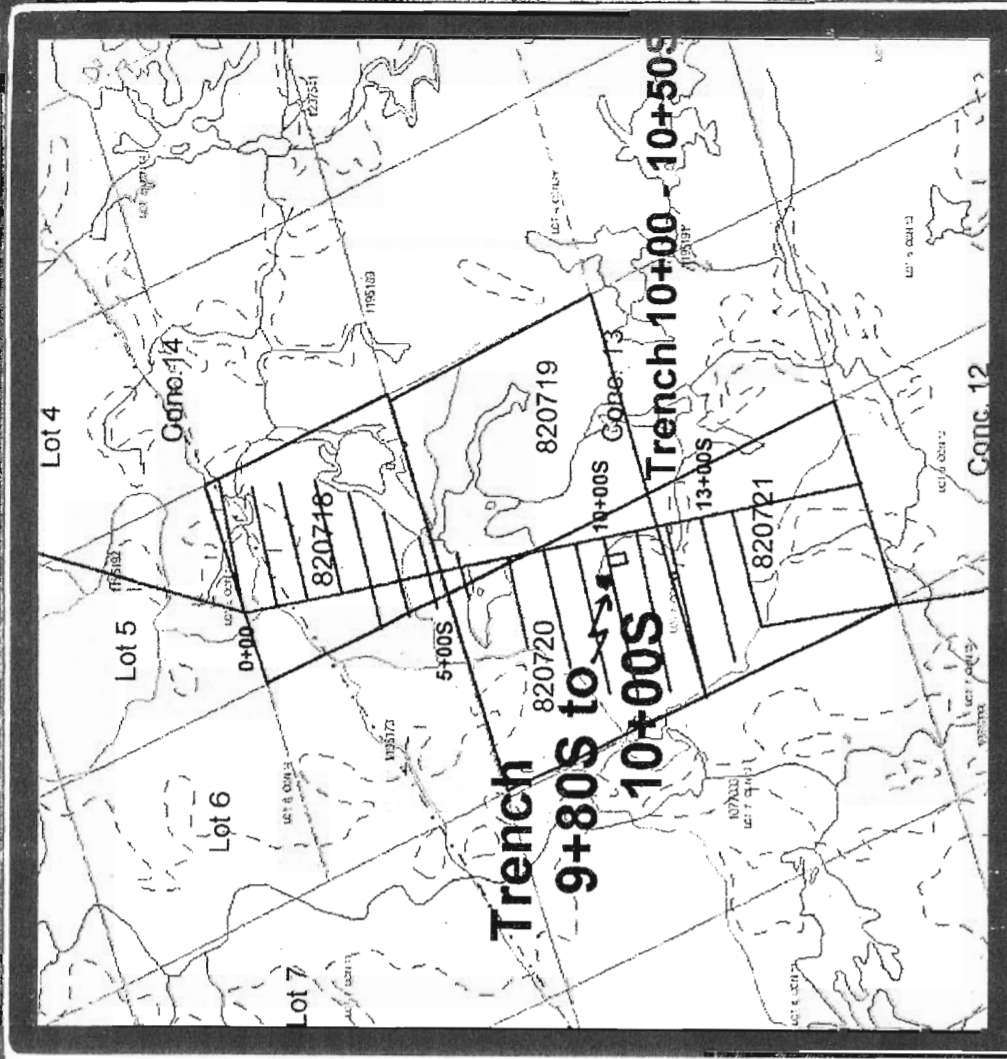


564

Channel Sample
Sample Number

0 2 metres

SAMPLE LOCATION MAP
TRENCH 26+30S TO 26+40S
SUBURY INC.
Tudor Gold Project
Tudor Twp., Ontario
Lot 8, Concession XII S. 1/2 1076809



Channel Cut

2.89 /2.1 Au grams per tonne / metres



9+80S

1.76 /0.2	0.17 /0.15
0.15 /0.2	1.02 /0.15
1.61 /0.2	7.66 /0.15
0.18 /0.2	0.28 /0.2
0.09 /0.1	3.65 /0.1
	2.15 /0.1
	1.04 /0.1
	0.74 /0.2
	0.07 /0.1
	0.09 /0.1
	2.39 /0.15
	0.31 /0.15
	0.09 /0.1
	0.96 /0.15
	3.53 /0.15

9+85S

1.66 /0.2
4.82 /0.2
0.18 /0.2
1.86 /0.2
13.5 /0.2
7.08 /0.2
3.16 /0.2

0.08 /0.2
0.27 /0.2
0.91 /0.2
0.02 /0.2
0.16 /0.2
1.38 /0.2
0.48 /0.2
0.50 /0.2
0.59 /0.2
0.28 /0.2
1.65 /0.2
0.11 /0.1
3.38 /0.1

9+90S

0.36 /0.2
0.71 /0.2
4.62 /0.2
0.57 /0.2
0.56 /0.2
15.7 /0.2
4.50 /0.2
3.69 /0.2
0.94 /0.2
1.51 /0.2
0.92 /0.2

0.14 /0.15
2.15 /0.15
4.92 /0.15
1.30 /0.15
0.19 /0.2
0.21 /0.2
0.21 /0.2
0.09 /0.25
0.04 /0.25

0.69 /0.15
14.8 /0.15
5.18 /0.15
12.6 /0.15
76.1 /0.15
7.97 /0.10

4.98 /0.2
11.5 /0.2
5.07 /0.2
0.46 /0.2
4.00 /0.2
1.62 /0.2
0.71 /0.15
0.28 /0.15

0.16 /0.1	0.08 /0.1
0.06 /0.1	3.50 /0.15
0.15 /0.1	0.11 /0.1

9+95S

0.06 /0.2
2.24 /0.2
3.18 /0.2
1.01 /0.2
3.75 /0.2
1.53 /0.2
0.69 /0.2
0.33 /0.2
0.72 /0.15
0.05 /0.15
<0.02 /0.15
0.05 /0.1

0.47 /0.2
1.29 /0.2
0.31 /0.2
0.90 /0.1
0.05 /0.15

0.41 /0.15
2.87 /0.15

1.17 /0.2
2.67 /0.2
1.31 /0.2
0.49 /0.2
0.11 /0.2
5.48 /0.2
0.86 /0.2
2.31 /0.2
0.04 /0.2

<0.02 /0.2
0.03 /0.2
0.27 /0.2
0.62 /0.1
1.66 /0.15
7.14 /0.15
4.16 /0.15
1.02 /0.15
0.18 /0.1

10+00S



0+95W

0+90W



ASSAY RESULTS

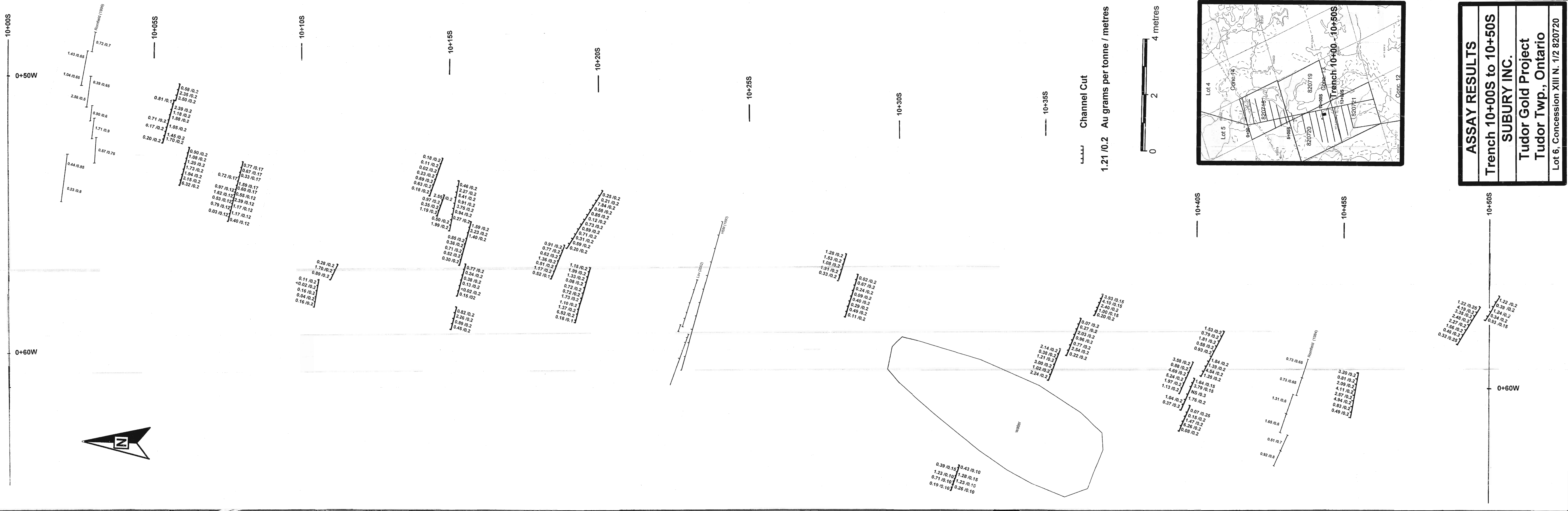
Trench 9+80S to 10+00S

SUBURY INC.

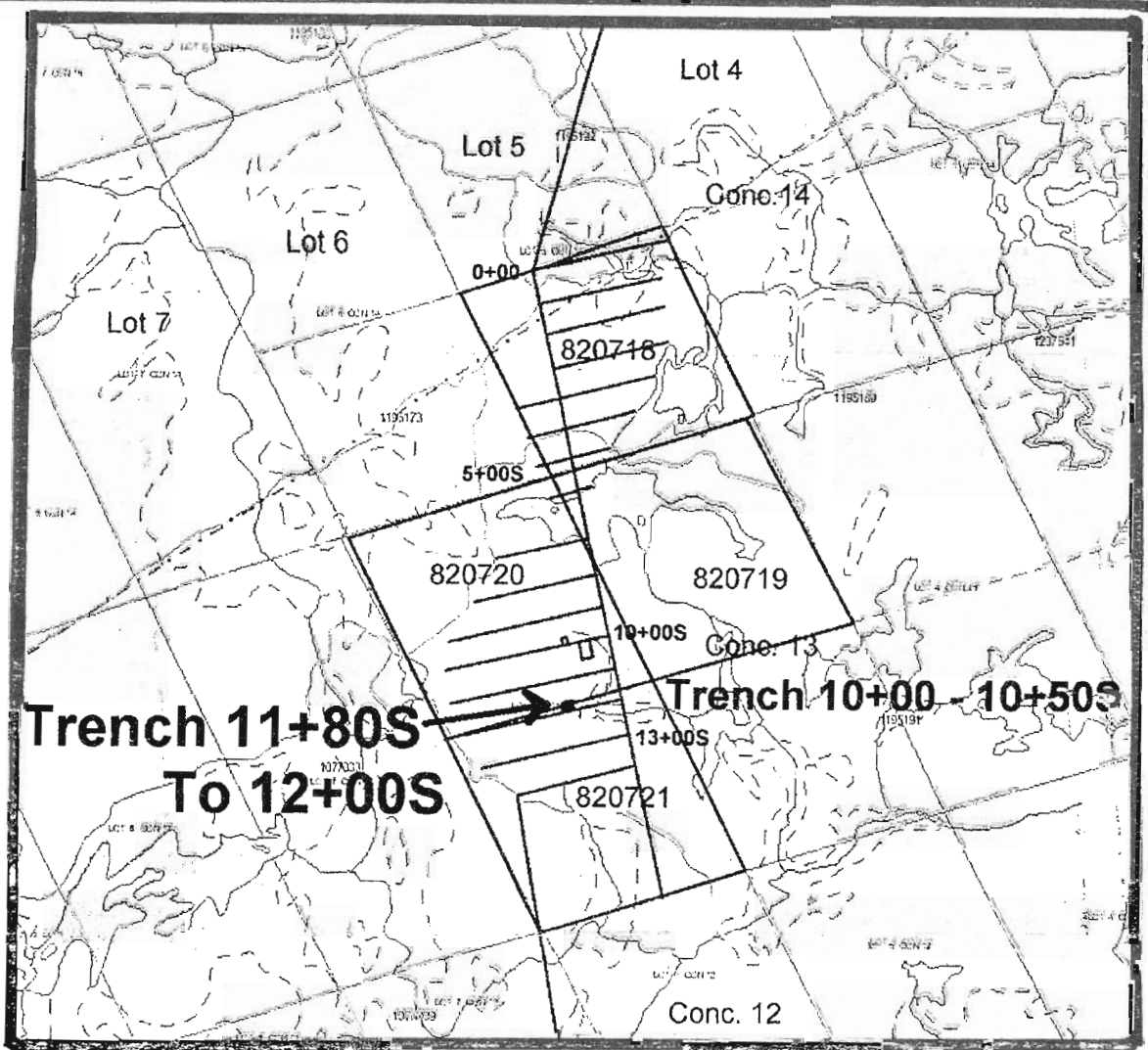
Tudor Gold Project

Tudor Twp., Ontario

Lot 6, Concession XIII N. 1/2 820720



ASSAY RESULTS
Trench 10+00S to 10+50S
SUBURY INC.
Tudor Gold Project
Tudor Twp., Ontario
 Lot 6, Concession XIII N. 1/2 820720

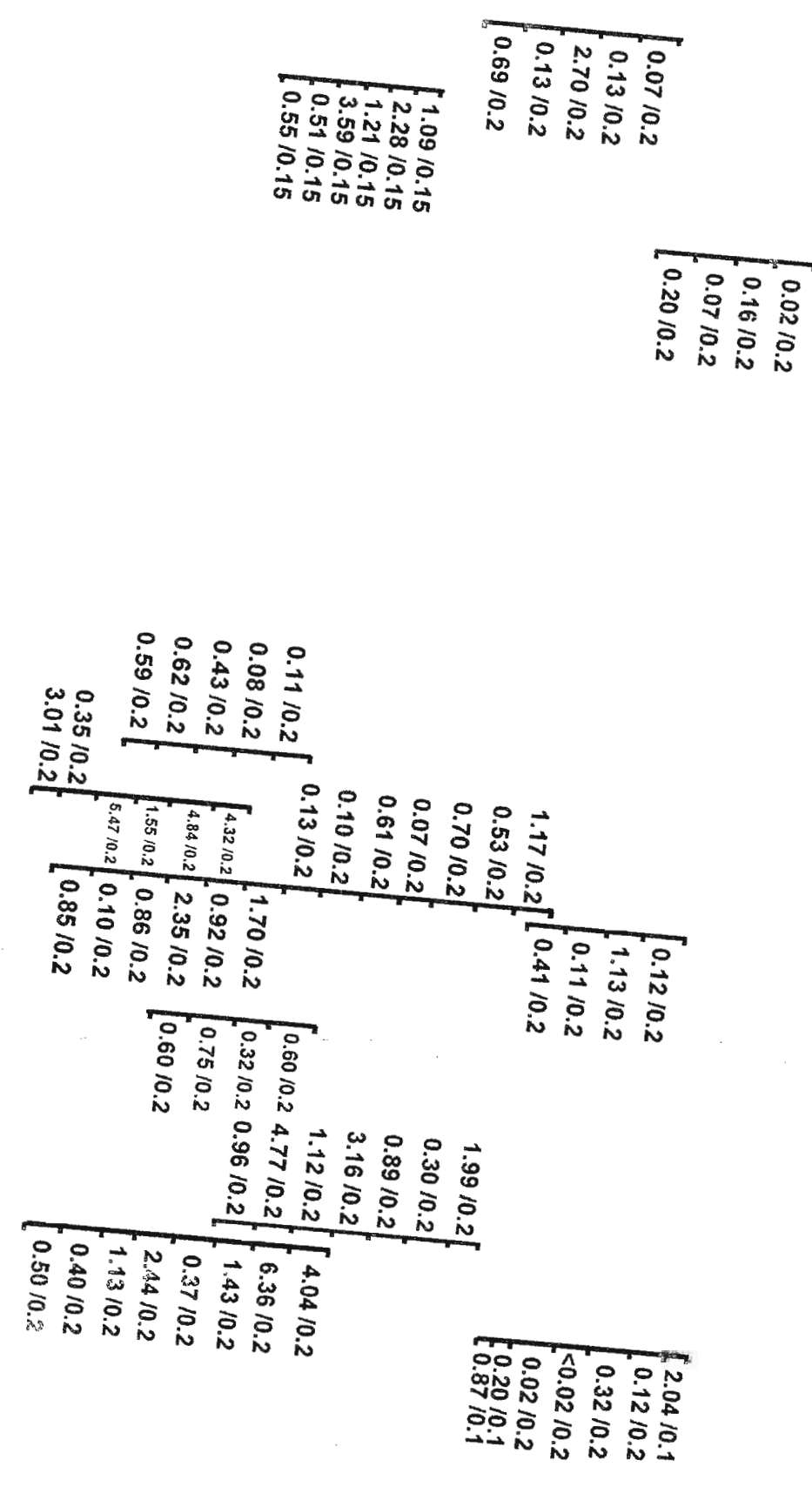


11+80S

11+85S

11+90S

11+95S



Channel Sample
2.2 / 1.0 Au grams per tonne / metres

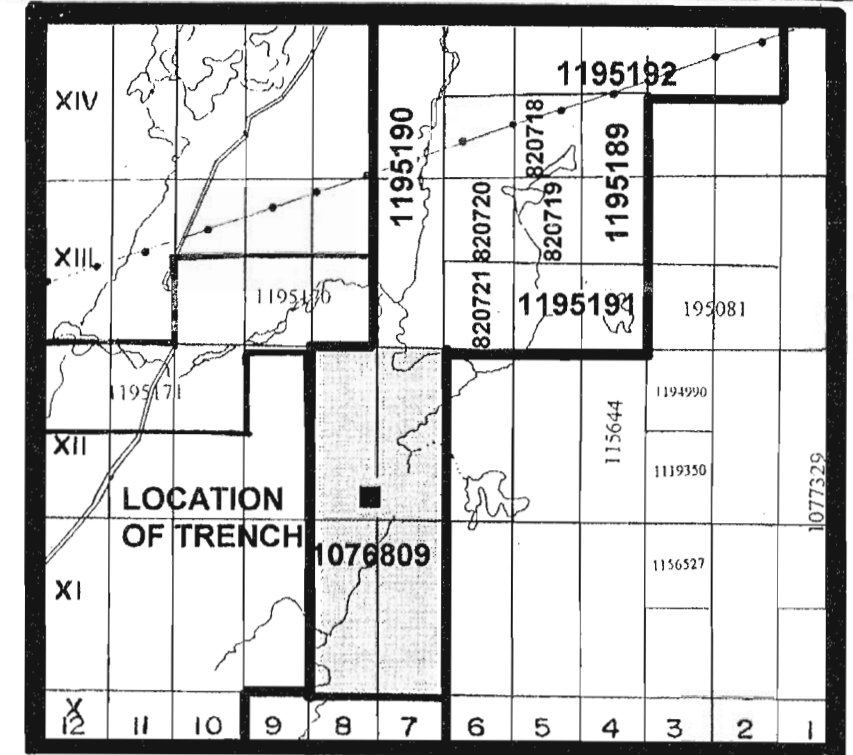
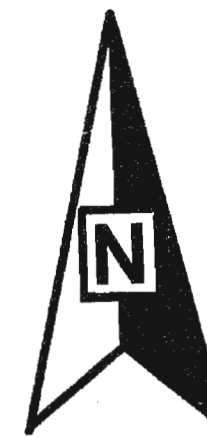
ASSAY RESULTS
TRENCH 11+80S TO 12+00S
SUBURY INC.
Tudor Gold Project
Tudor Twp., Ontario
Lot 6, Concession XIII S. 1/2 820721

L.12+00S

1+20W

1+15W





26+30S
4961236mN

297086mE

297087mE

297088mE

297089mE

297090mE

4961235mN

4961234mN

4961233mN

4961232mN

4961231mN

4961230mN

4961229mN

4961228mN

0.03 / 0.2
0.16 / 0.2
1.59 / 0.2
1.06 / 0.2
0.24 / 0.2

0.02 / 0.15
0.04 / 0.15
<0.02 / 0.15

3.53 / 0.15
0.49 / 0.15
0.18 / 0.15
0.02 / 0.15

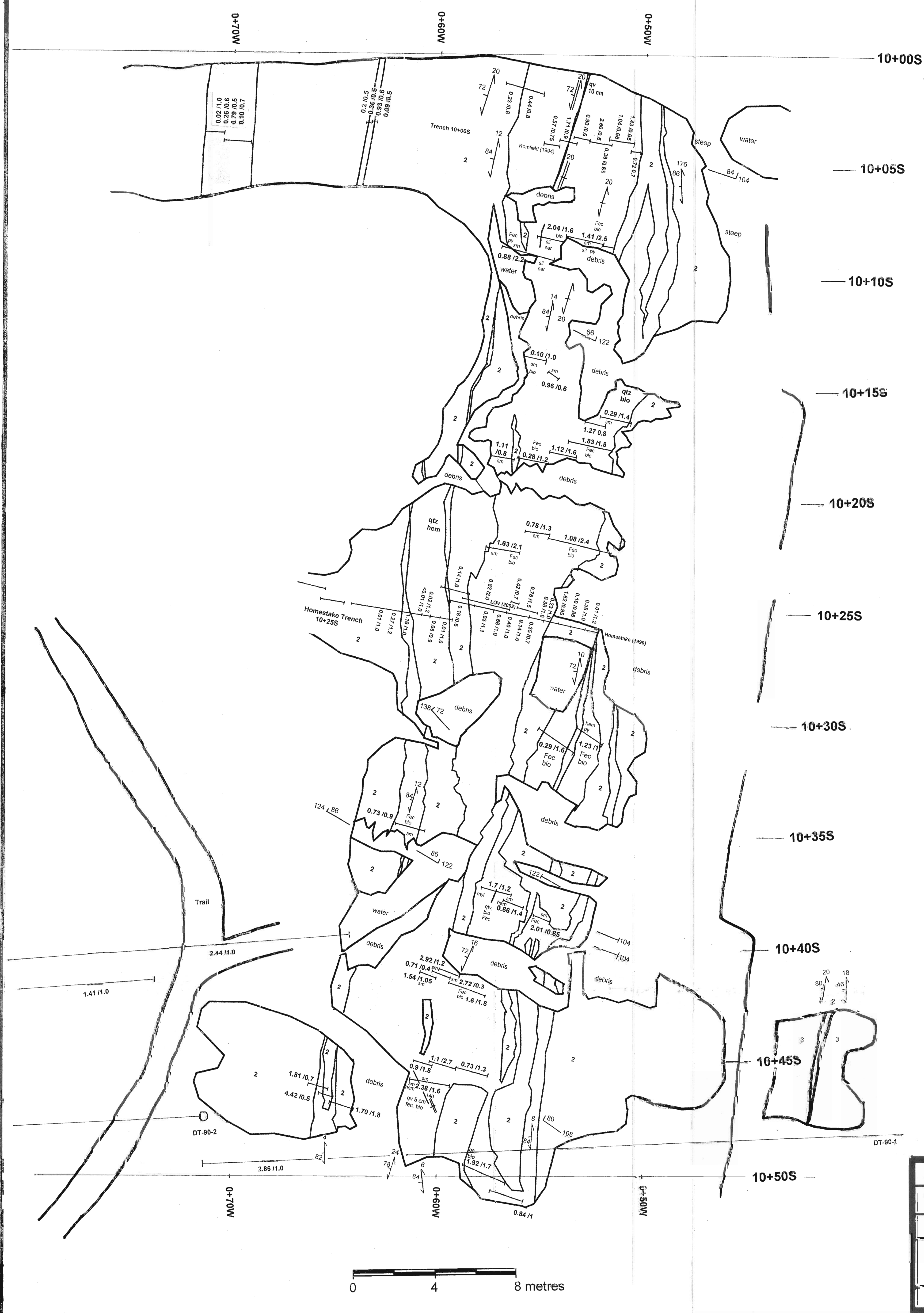
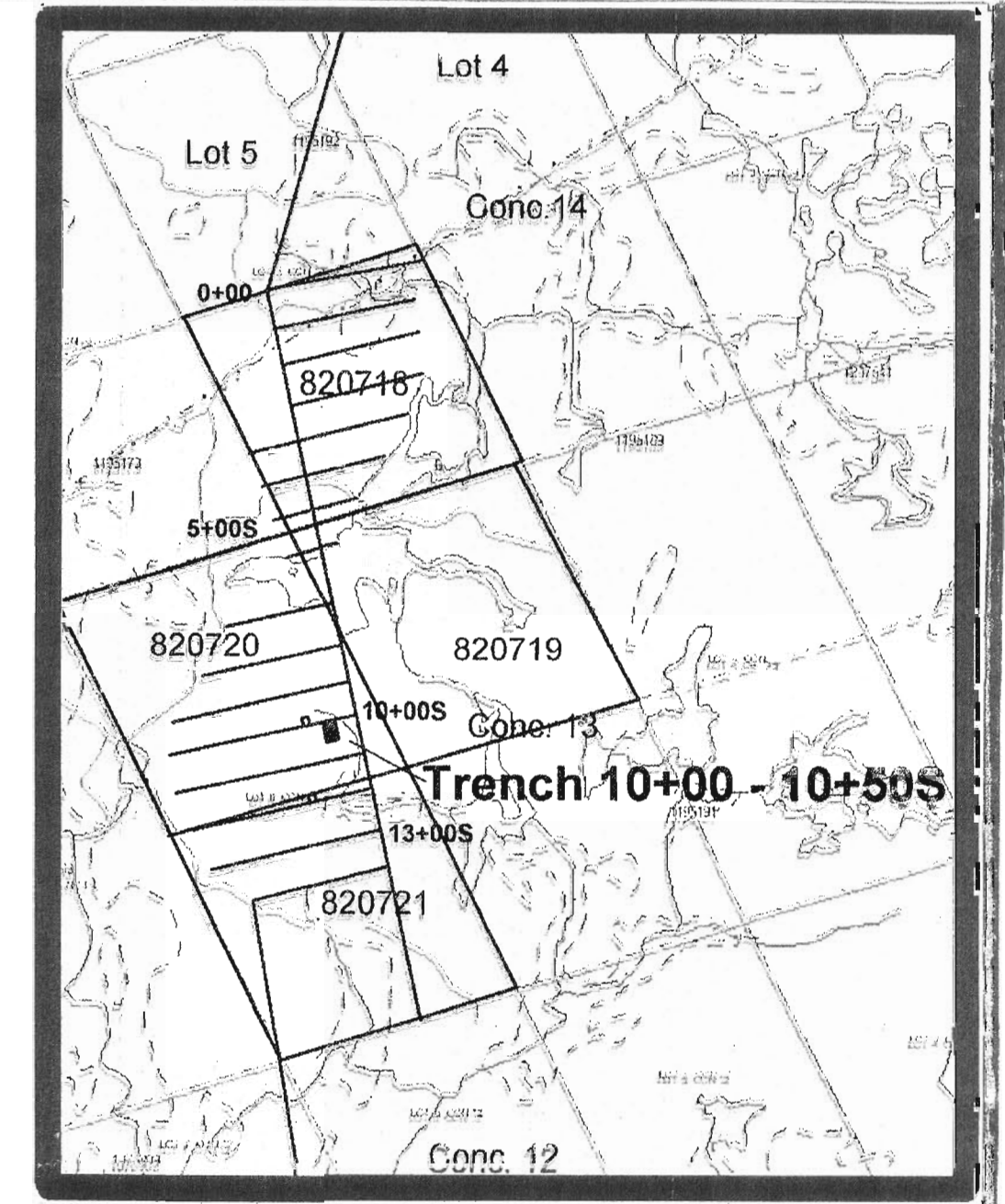
0.02 / 0.15
0.71 / 0.15
0.02 / 0.15
<0.02 / 0.15
<0.02 / 0.15

0.68 / 0.15
0.24 / 0.15
0.02 / 0.15
0.02 / 0.15
0.05 / 0.1
<0.02 / 0.1
<0.02 / 0.1
0.02 / 0.1

Channel Sample
2.2 / 1.0 Au grams per tonne / metres

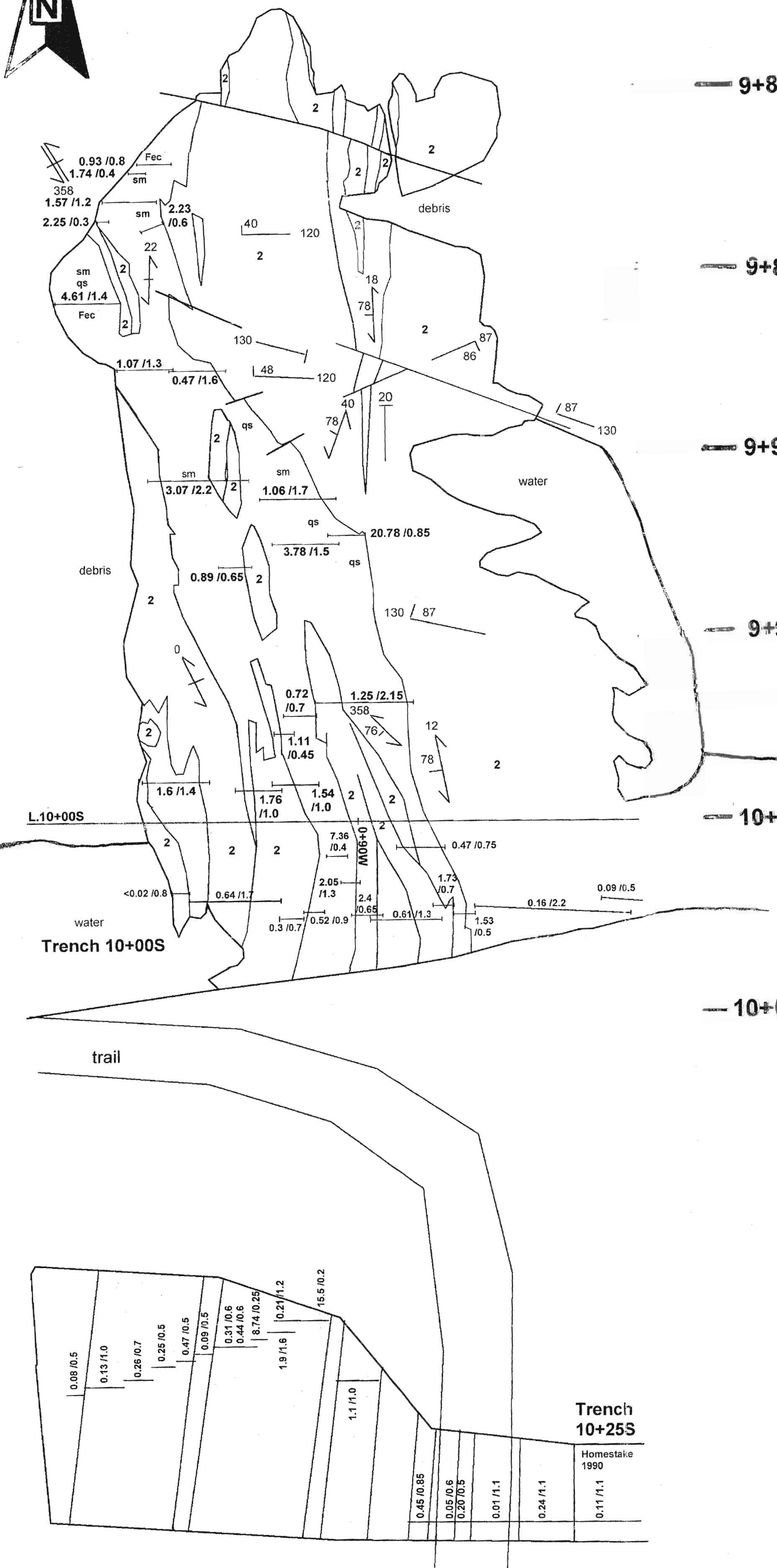
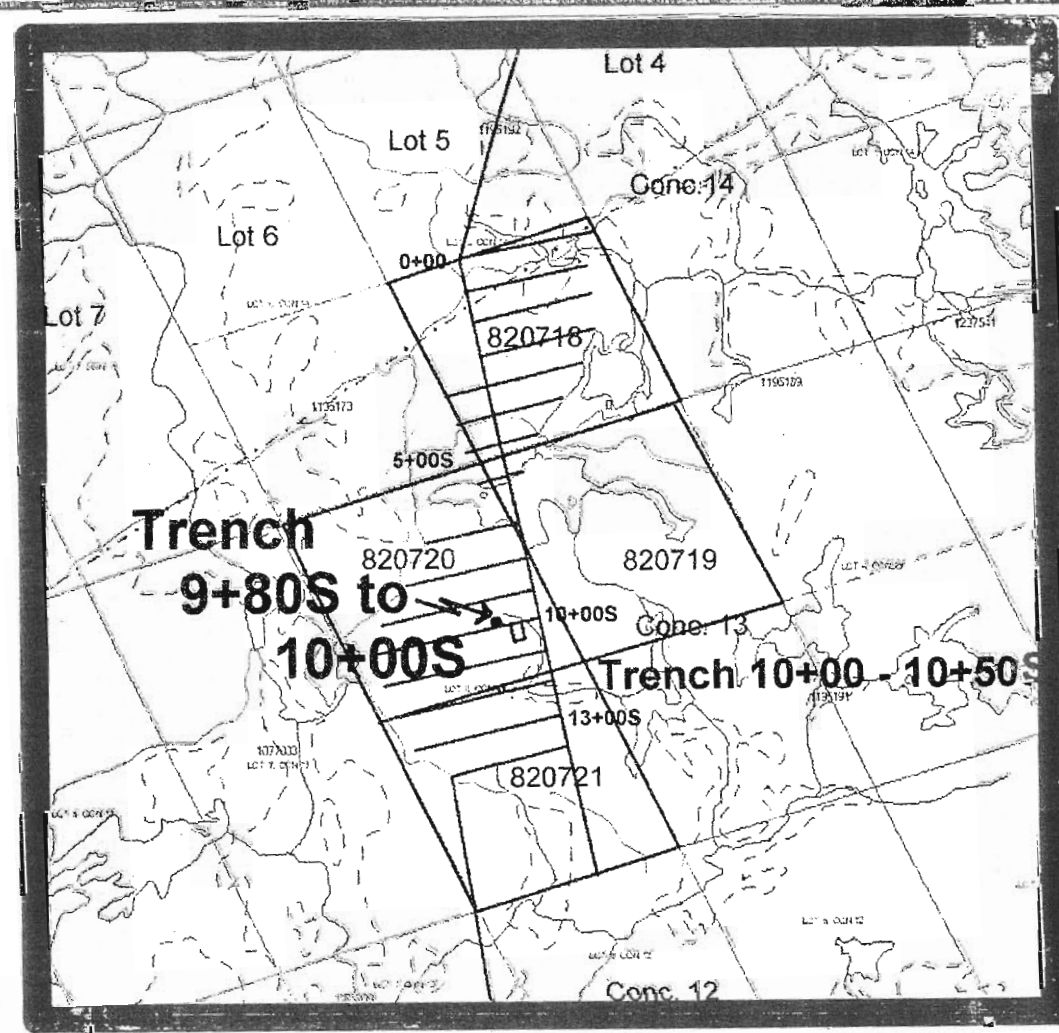
0 2 metres

ASSAY RESULTS
TRENCH 26+30S TO 26+40S
SUBURY INC.
Tudor Gold Project
Tudor Twp., Ontario
Lot 8, Concession XII S. 1/2 1076809



- LEGEND**
- 3 Metasedimentary Units
a argillite
 - 2 Felsic Metavolcanic Units
a felsite
 - 1 Mafic Metavolcanic Units
 - myl mylonitization
 - sheared felsite + arsenopyrite
 - sm semi-massive arsenopyrite
 - py pyrite
 - hem hematite
 - qtz quartz
 - qv quartz vein
 - qs quartz stringers
 - Fec Fe carbonate alteration
 - sil silicification
 - ser sericite
 - bio biotite
 - channel cut
 - foliation
 - shearing
 - joint
 - quartz vein
 - 2.7/2.3 Au grams per tonne/ metres
- map by: ARJADEE PROSPECTING 2007

GEOLOGY
Trench 10+00S to 10+50S
SUBURY INC.
Tudor Gold Project
Tudor Twp., Ontario
 Lot 6, Concession XIII N. 1/2 820720



9+80S

9+85S

9+90S

9+95S

10+00S

10+05S

LEGEND

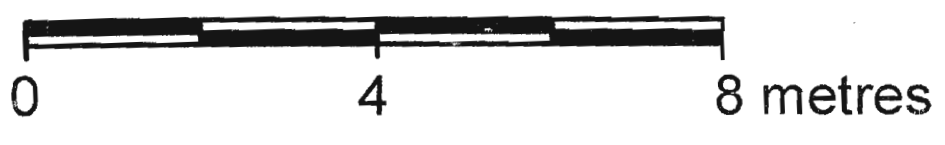
- 3 Metasedimentary Units
a argillite
- 2 Felsic Metavolcanic Units
a felsite
- 1 Mafic Metavolcanic Units

- sheared felsite + arsenopyrite
- sm semi-massive arsenopyrite
- py pyrite
- hem hematite
- qtz quartz
- qv quartz vein
- qs quartz stringers
- Fec Fe carbonate alteration
- sil silicification
- ser sericite
- bio biotite

- | channel cut
- ↗ foliation
- ↘ shearing
- || joint
- ⊥ quartz vein

27/2.3 Au grams per tonne / metres

map by: ARJADEE PROSPECTING 2007

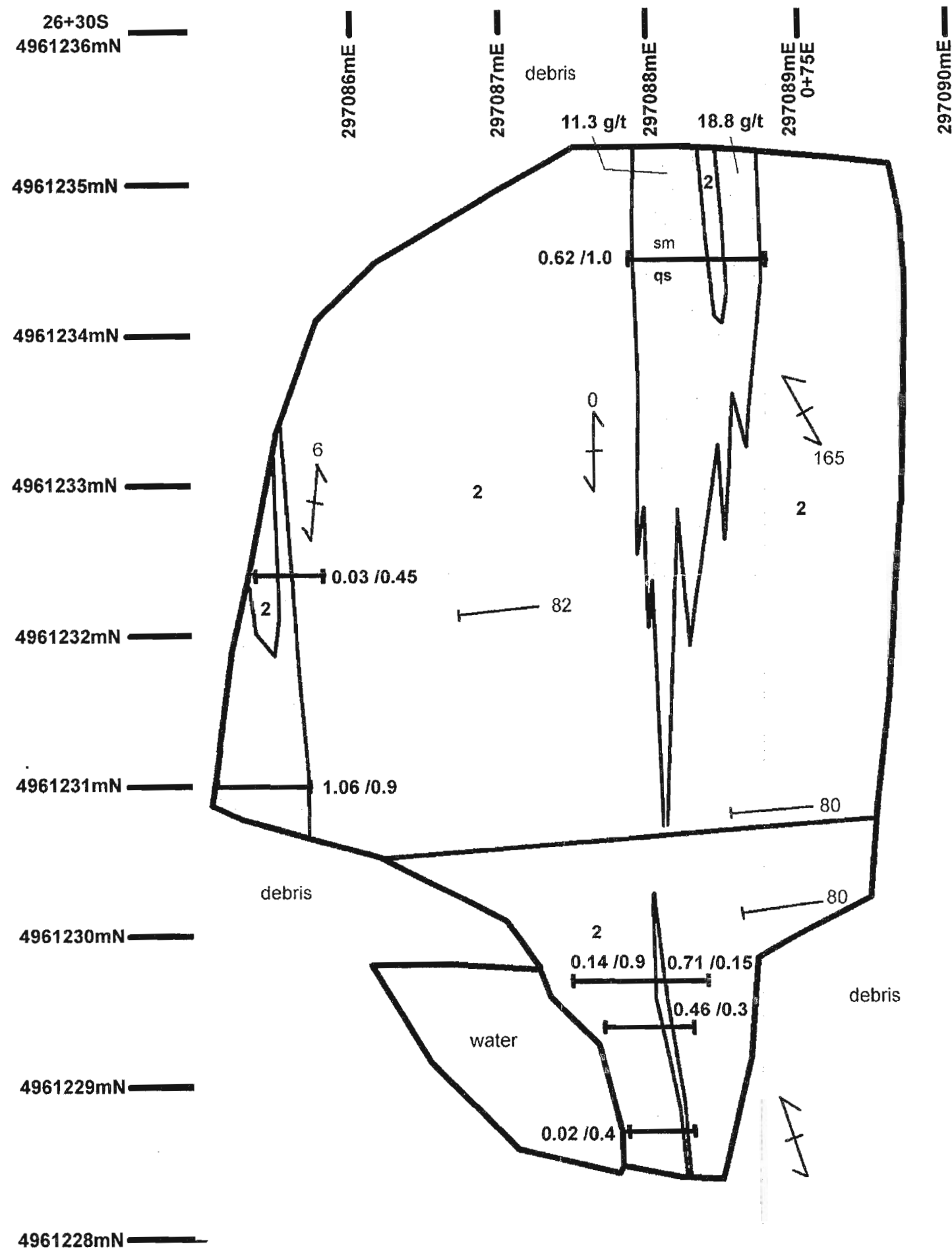
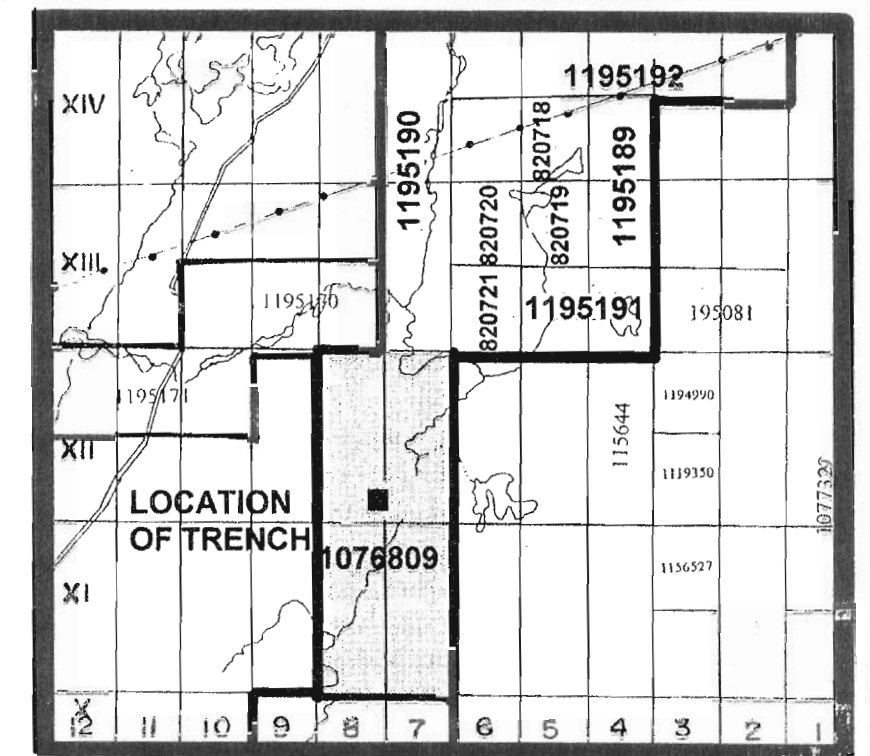


GEOLOGY

Trench 9+80S to 10+00S
SUBURY INC.

Tudor Gold Project
Tudor Twp., Ontario

Lot 6, Concession XIII N. 1/2 820720



LEGEND

- 3 Metasedimentary Units
 - a argillite
 - 2 Felsic Metavolcanic Units
 - a felsite
 - 1 Mafic Metavolcanic Units
-
- sheared felsite + arsenopyrite
 - sm semi-massive arsenopyrite
 - py pyrite
 - hem hematite
 - qtz quartz
 - qv quartz vein
 - qs quartz stringers
 - Fec Fe carbonate alteration
 - sil silicification
 - ser sericite
 - bio biotite
-
- channel cut
 - foliation
 - shearing
 - joint
 - quartz vein
- 2.7/2.3 Au grams per tonne/ metres

map by: ARJADEE PROSPECTING 2007

GEOLOGY

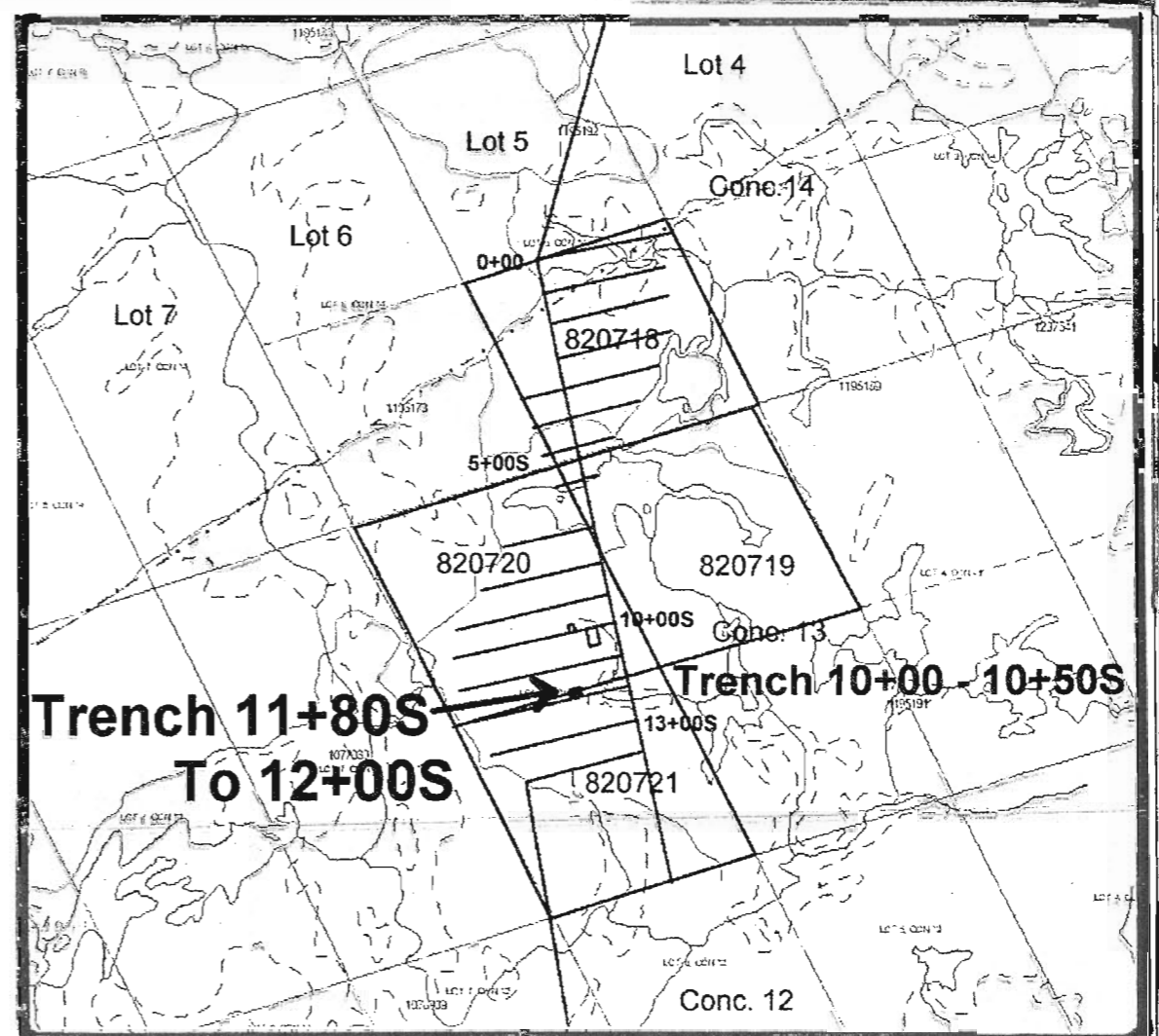
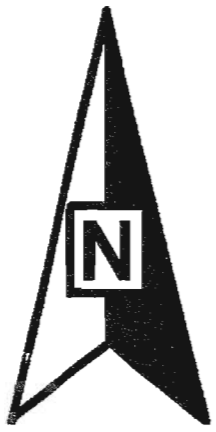
TRENCH 26+30S TO 26+40S

SUBURY INC.

Tudor Gold Project

Tudor Twp., Ontario

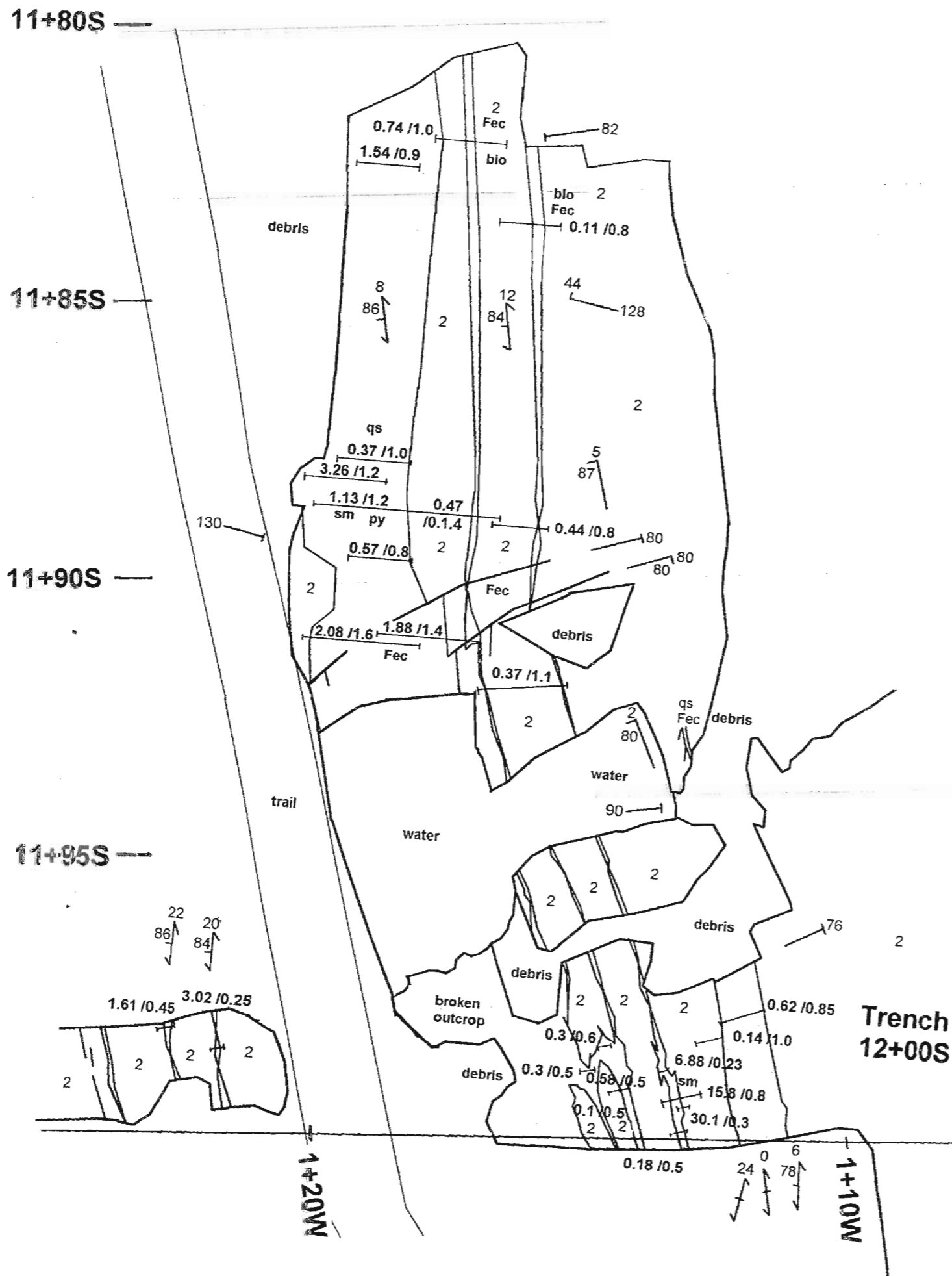
Lot 8, Concession XII S. 1/2 1076809



LEGEND

- 3 Metasedimentary Units
a argillite
- 2 Felsic Metavolcanic Units
a felsite
- 1 Mafic Metavolcanic Units
- sheared felsite + arsenopyrite
- sm semi-massive arsenopyrite
- py pyrite
- hem hematite
- qtz quartz
- qv quartz vein
- qs quartz stringers
- Fec Fe carbonate alteration
- sil silicification
- ser sericite
- bio biotite
- channel cut
- foliation
- shearing
- joint
- quartz vein
- 2.7/2.3 Au grams per tonne/ metres

map by: ARJADEE PROSPECTING 2007



GEOLOGY
TRENCH 11+80S TO 12+00S
SUBURY INC.
Tudor Gold Project
Tudor Twp., Ontario
Lot 6, Concession XIII S. 1/2 820721