

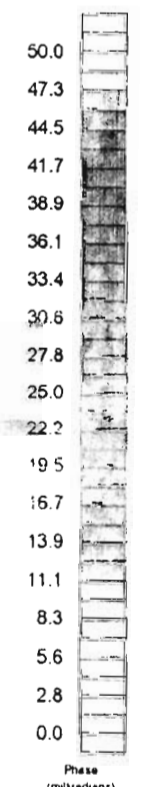
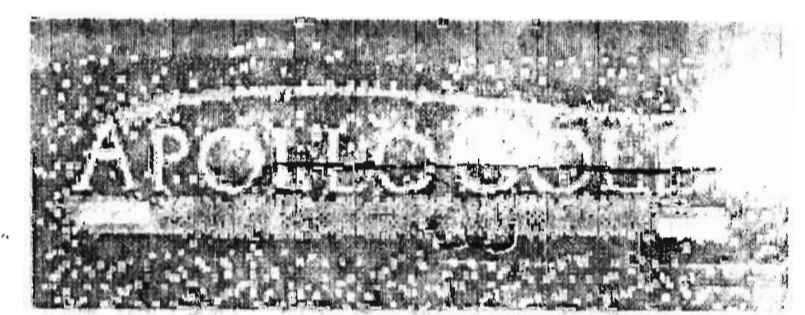
2D CHARGEABILITY (Z=250m/Sharp Model) - UNCONSTRAINED UBC 2D IP INVERSION



BASE LEGEND

- Property boundary
- Mine buildings
- Apollo Gold open pit
- Apollo Gold Grid and UTM reference points (from NAD 27 to NAD83)
- Quartec Survey Grid
- HWY, Roads, transmission lines
- Lakes, Rivers, Creeks
- UTM Coordinate Lines (NAD83, Zone 17T)
- Claim Divisions

RECEIVED
NOV 05 2007
GEOSCIENCE ASSESSMENT OFFICE

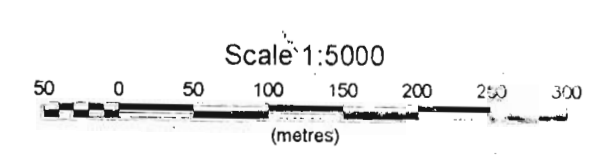


W.0780-020/2

SURVEY SPECIFICATIONS:
 Quantec TITAN-24 Distributed Array System
 Coordinate System: Mine Grid Coordinates
 Dipole Spacing: 100 metres Array: Pole-dipole
 Operators: QG - Chaiasson + Tretalick
 Transmitter: ZERO GGT-10 (10 kW) ZMG-20

PROCESSING HISTORY:
 Data Acquisition: Full Waveform Sampling (240 samples/sec.)
 Time-Series Processing: Robust Statistics
 Processing Platform: QG Quicklay(tm)
 Inversion: Unconstrained UBC 2D IP
 UBC Model misfit: Converges to Npts, Max 100 iters

PLOTTING PARAMETERS:
 Grid Cell Size: 25 metres
 Gridding: Bi-directional
 Filter Applied: 2X Hamming Filter
 Contours: Linear (2 & 10 mrad)
 Colour Zoning: Equal Area (Colour.tbl)



RECEIVED
NOV 05 2007
GEOSCIENCE ASSESSMENT OFFICE

BLACK FOX PROJECT
 Beatty & Hislop Twp, near Matheson, ON
 TITAN-24 ARRAY DC RESISTIVITY IP SURV.
 Unconstrained UBC 2D IP
 Survey Date: April-May, 2003
 Surveyed & Processed by: QUANTEC GEOSCIENCE LTD. INC.

Coordinate Reference System using UTM NAD83, Zone 17T. Client's Digital Topographic Map was obtained from the following URL: <http://www.mrdp.gov.on.ca/mrdp/mine/lands/2003.asp>
 Apollo Mine Site and Grid Location referenced from UAD07 base plan (1:50,000) 13 and 10001 (1:50,000) 14. UTM supplied by Apollo Gold (personal comm. July, 2003). Co-Reference location error (NAD27 to NAD83) less than 2 meters. Abbreviated geology reference and colouring scale less than 10 metres. UTM Zone 17T.
 Reference location error (NAD27 to NAD83) less than 2 meters. Abbreviated geology reference and colouring scale less than 10 metres. UTM Zone 17T.