

Dentonia Resources Ltd.
Atkinson Project
Lipton Lake Claims (North extension)
Ground Magnetometer survey
Magnetic Profiles

Profile scale: 1cm=2,000 gamma
 Base level for posting and profiles: 57,000 gamma
 Instrument: GSM-systems GSM-19 magnetometers

Date processing and interpretation by:
 G. Lambert, P.Eng.
LAMBERT GEOSCIENCES LTÉE
 March 2007

Cochrane District, Ontario
 N.T.S. 32E/13
 Scale 1:5,000
 Surface Exploration, Rouyn-Noranda, Qué.

4202775

4202776

4202777

4202778

1214341

1214342

1205417

1214343

1213655

1214303

2007 GRID

2005 GRID

LIPTON LAKE

L 1500 N

L 1400 N

L 1300 N

L 1200 N

L 1100 N

L 1000 N

L 900 N

L 800 N

L 700 N

L 600 N

L 500 N

L 400 N

L 300 N

L 200 N

L 100 N

L 0

L 100 S

L 200 S

L 300 S

L 400 S

L 500 S

L 600 S

L 700 S

L 800 S

L 900 S

L 1000 S

L 1100 S

L 1200 S

L 600 S

L 700 S

L 800 S

L 900 S

L 1000 S

L 1100 S

L 1200 S

400W

200W

BASELINE

200E

400E

59600mE

59600mE

TL 1000E

TL 1100E

TL 1200E

TL 1300E

TL 1400E

TL 1500E

TL 1600E

TL 1700E

TL 1800E

TL 1900E

TL 2000E

TL 2100E

TL 2200E

TL 2300E

TL 2400E

TL 2500E

TL 2600E

TL 2700E

TL 2800E

TL 2900E

TL 3000E

TL 3100E

TL 3200E

TL 3300E

TL 3400E

TL 3500E

TL 3600E

TL 3700E

TL 3800E

TL 3900E

TL 4000E

TL 4100E

TL 4200E

TL 4300E

TL 4400E

TL 4500E

TL 4600E

TL 4700E

TL 4800E

TL 4900E

TL 5000E

TL 5100E

TL 5200E

TL 5300E

TL 5400E

TL 5500E

TL 5600E

TL 5700E

TL 5800E

TL 5900E

TL 6000E

TL 6100E

TL 6200E

TL 6300E

TL 6400E

TL 6500E

TL 6600E

TL 6700E

TL 6800E

TL 6900E

TL 7000E

TL 7100E

TL 7200E

TL 7300E

TL 7400E

TL 7500E

TL 7600E

TL 7700E

TL 7800E

TL 7900E

TL 8000E

TL 8100E

TL 8200E

TL 8300E

TL 8400E

TL 8500E

TL 8600E

TL 8700E

TL 8800E

TL 8900E

TL 9000E

TL 9100E

TL 9200E

TL 9300E

TL 9400E

TL 9500E

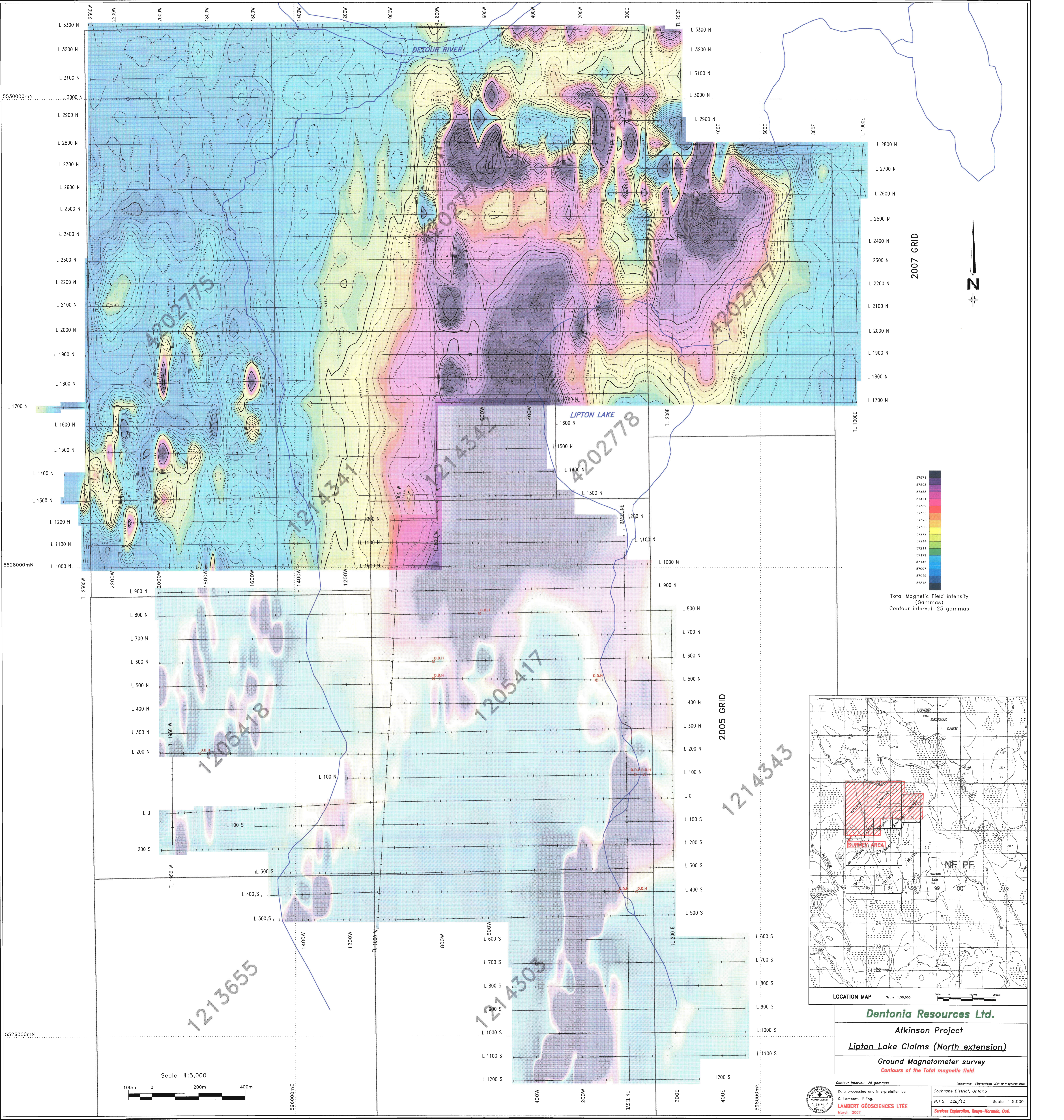
TL 9600E

TL 9700E

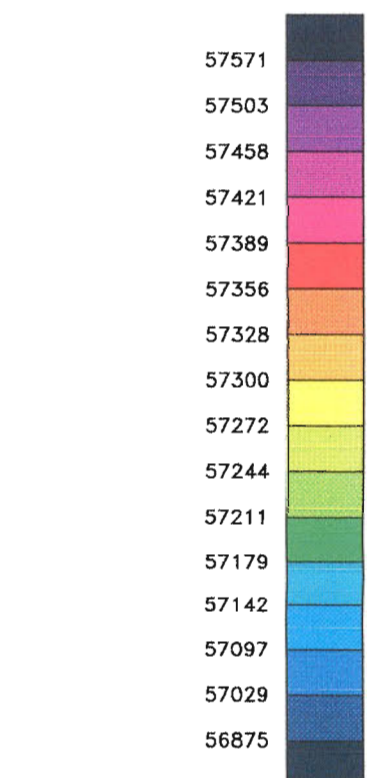
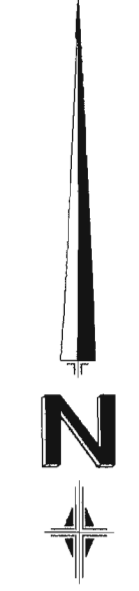
TL 9800E

TL 9900E

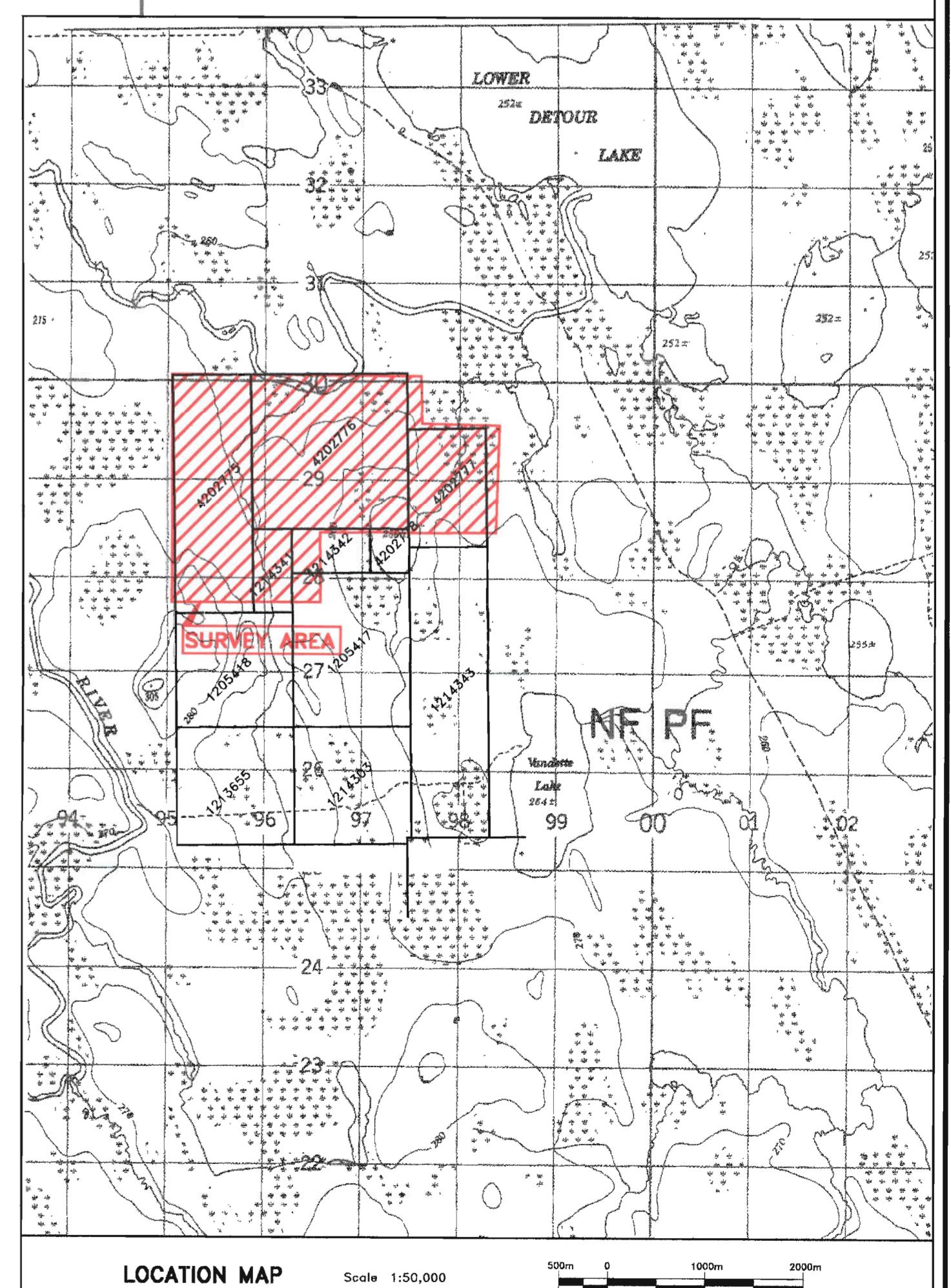
TL 10000E



2007 GRID



Total Magnetic Field Intensity (Gammas)
Contour interval: 25 gammas



Dentonia Resources Ltd.
Atkinson Project
Lipton Lake Claims (North extension)
Ground Magnetometer survey
 Contours of the Total magnetic field
 Contour Interval: 25 gammas

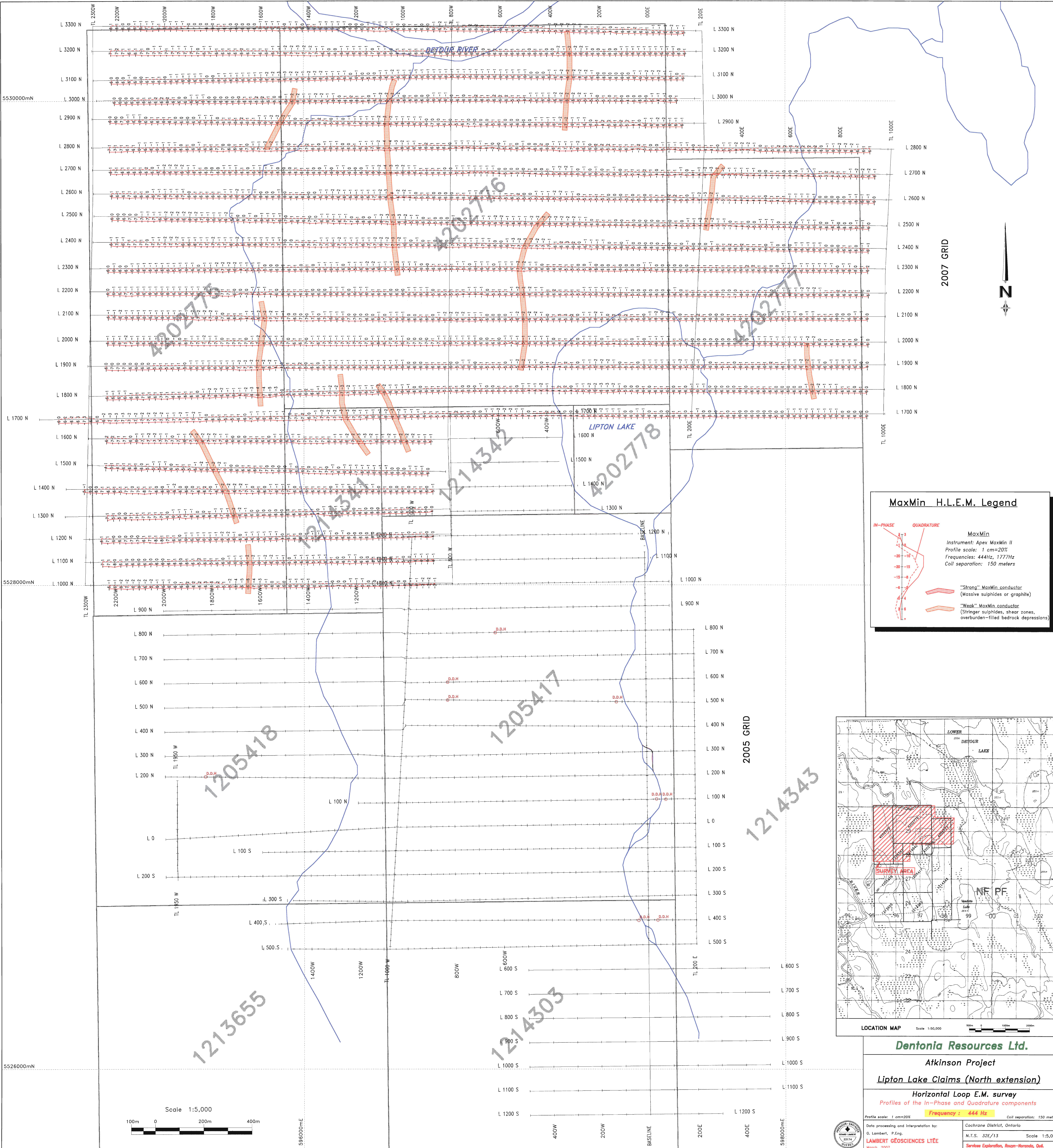


Data processing and interpretation by:
G. Lambert, P.Eng.
LAMBERT GÉOSCIENCES LTÉE
 March 2007

Instruments: GEM-systems GEM-19 magnetometers
 Cochrane District, Ontario
 N.T.S. 32E/13 Scale 1:5,000
 Services Exploration, Rouyn-Noranda, Qué.



Scale 1:5,000



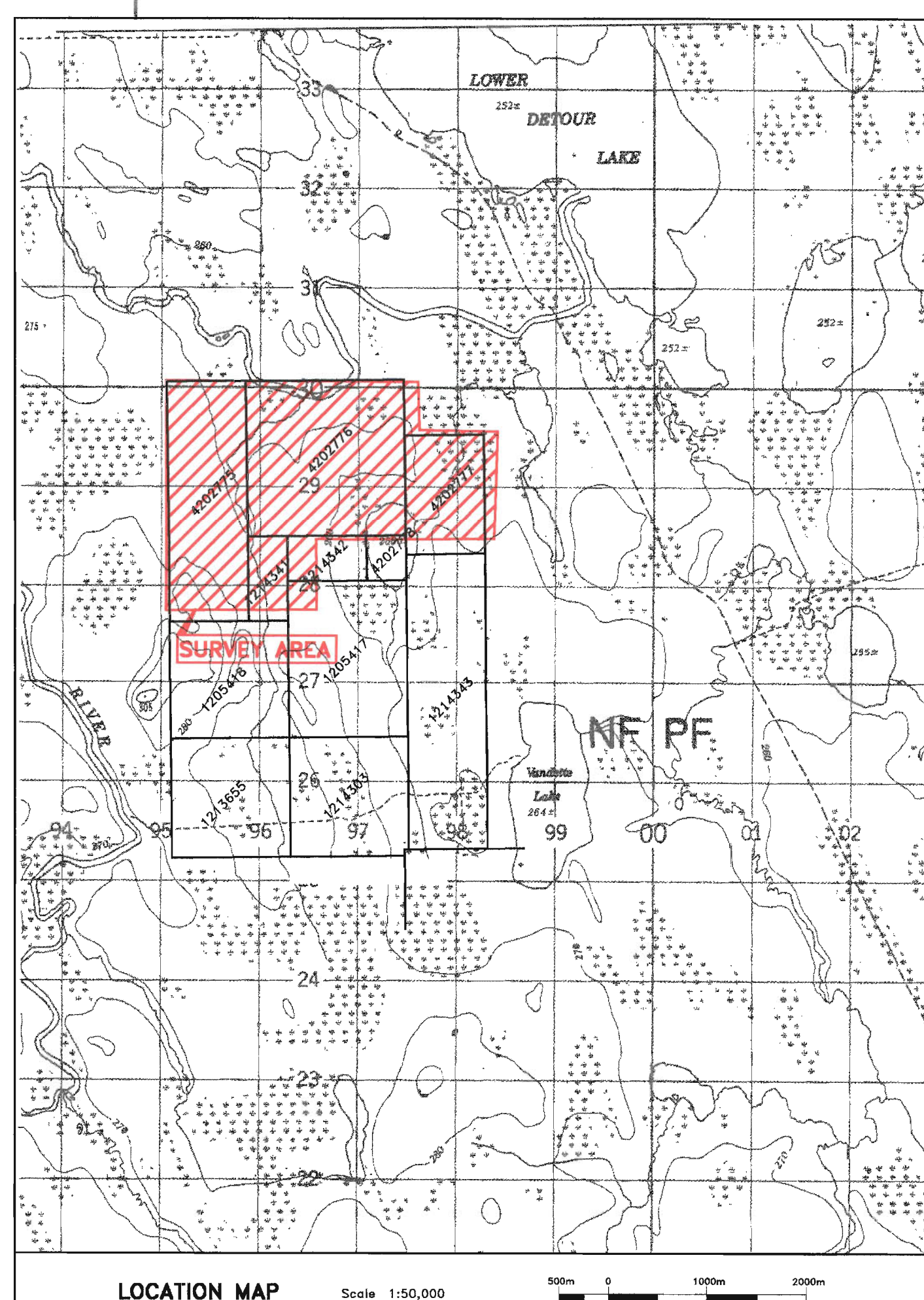
MaxMin H.L.E.M. Legend

IN-PHASE **QUADRATURE**

MaxMin
 Instrument: Apex MaxMin II
 Profile scale: 1 cm=20%
 Frequencies: 444Hz, 1777Hz
 Coil separation: 150 meters

"Strong" MaxMin conductor
 (Massive sulphides or graphite)

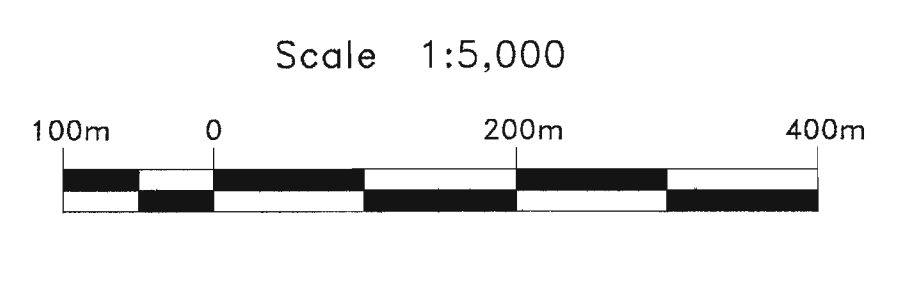
"Weak" MaxMin conductor
 (Stringer sulphides, shear zones, overburden-filled bedrock depressions)

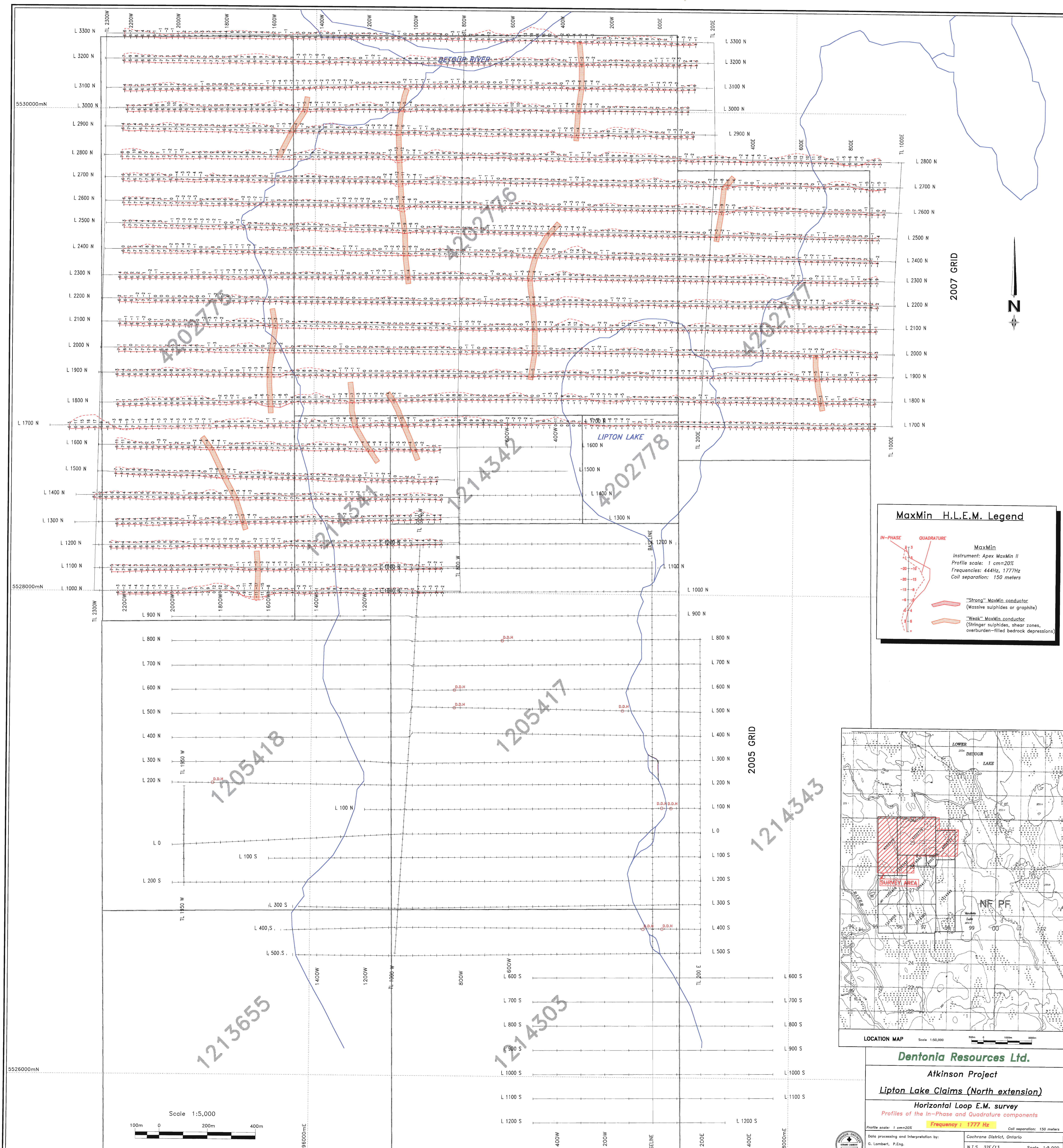


Dentonia Resources Ltd.
 Atkinson Project
 Lipton Lake Claims (North extension)
 Horizontal Loop E.M. survey
 Profiles of the In-Phase and Quadrature components
 Frequency : 444 Hz
 Profile scale: 1 cm=20% Coil separation: 150 meters

Date processing and Interpretation by:
 G. Lambert, P.Eng.
LAMBERT GÉOSCIENCES LTÉE
 March 2007

Cochrane District, Ontario
 N.T.S. 32E/13 Scale 1:5,000
 Services Exploration, Rouyn-Noranda, Qué.





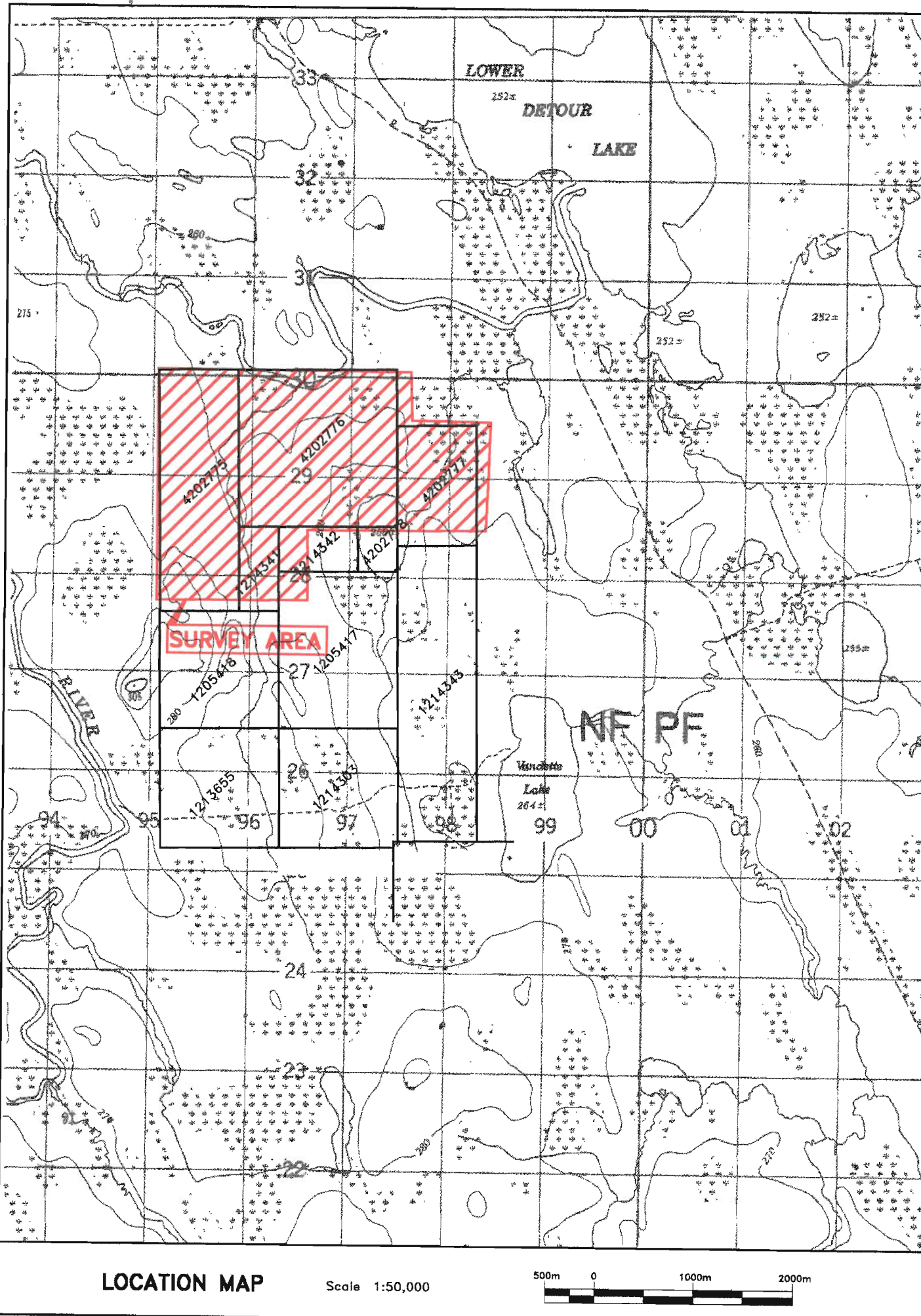
MaxMin H.L.E.M. Legend

IN-PHASE **QUADRATURE**

MaxMin
 Instrument: Apex MaxMin II
 Profile scale: 1 cm=20%
 Frequencies: 444Hz, 1777Hz
 Coil separation: 150 meters

"Strong" MaxMin conductor
 (Massive sulphides or graphite)

"Weak" MaxMin conductor
 (Stringer sulphides, shear zones,
 overburden-filled bedrock depressions)



Dentonia Resources Ltd.

Atkinson Project

Lipton Lake Claims (North extension)

Horizontal Loop E.M. survey
 Profiles of the In-Phase and Quadrature components

Profile scale: 1 cm=20% Frequency: 1777 Hz Coil separation: 150 meters

Date processing and Interpretation by:
 G. Lambert, P.Eng.
LAMBERT GEOSCIENCES LTD.
 March 2007

Cochrane District, Ontario
 N.T.S. 32E/13 Scale 1:5,000
 Services Exploration, Ross-McNab, Ont.