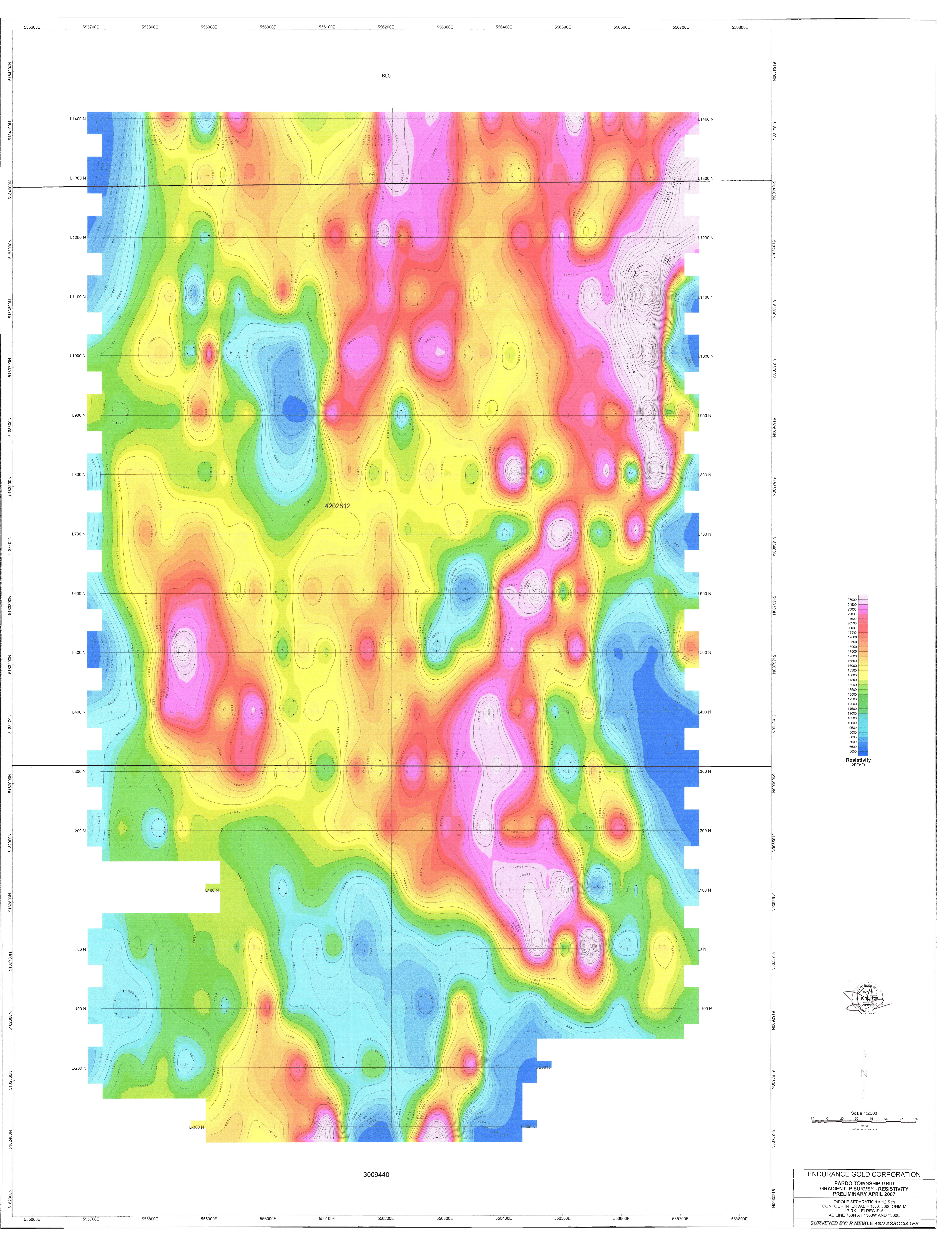


3009440

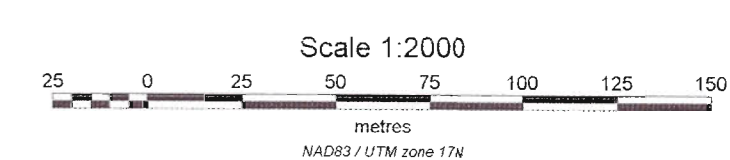
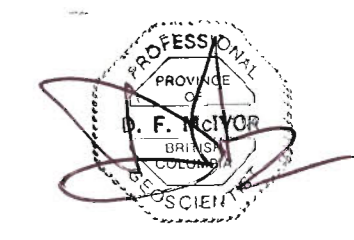
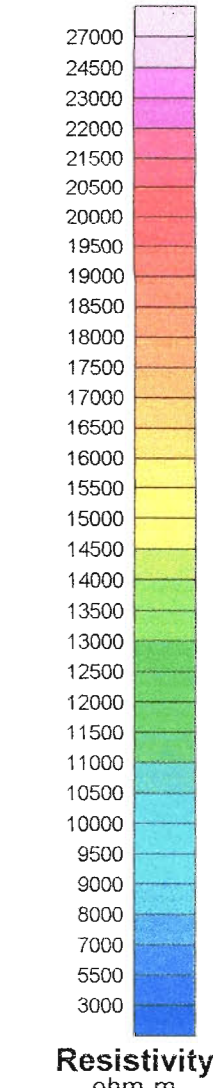
ENDURANCE GOLD CORPORATION  
 PARDO TOWNSHIP GRID  
 GRADIENT IP SURVEY - CHARGEABILITY  
 PRELIMINARY APRIL, 2007  
 DIPOLE SEPARATION = 12.5 m  
 CONTOUR INTERVAL = 1.5 mV/V  
 IP RX = ELREC IP-6  
 AB LINE 700N AT 1300W AND 1300E  
 SURVEYED BY: R MEIKLE AND ASSOCIATES



B10

4202512

3009440

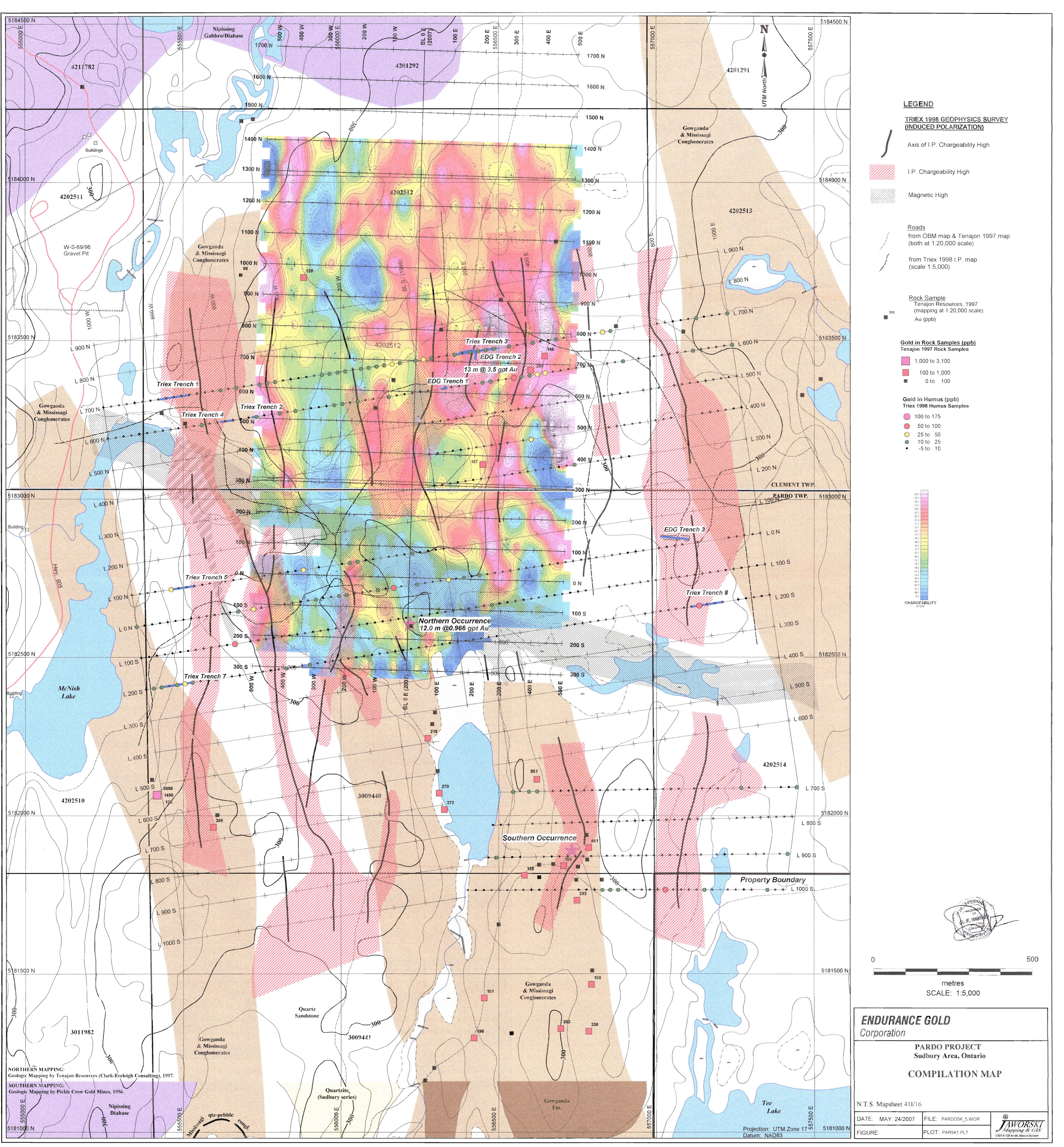


ENDURANCE GOLD CORPORATION

PARDO TOWNSHIP GRID  
GRADIENT IP SURVEY - RESISTIVITY  
PRELIMINARY APRIL 2007

DIPOLE SEPARATION = 12.5 m  
CONTOUR INTERVAL = 1000, 5000 OHM-M  
IP PX = ELREC IP-6  
AB LINE 100M AT 1300W AND 1300E

SURVEYED BY: R. MEIKLE AND ASSOCIATES



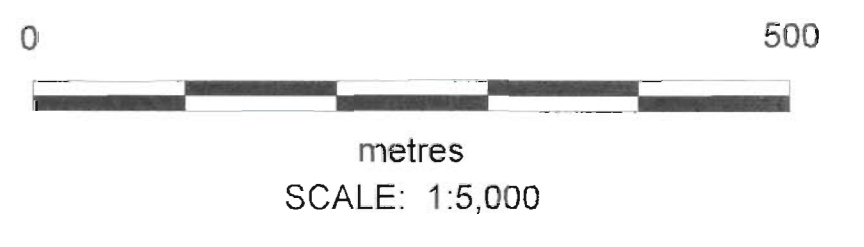
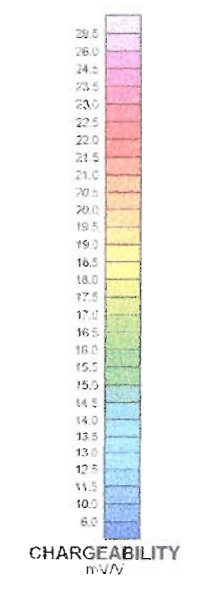
**LEGEND**  
**TRIEX 1998 GEOPHYSICS SURVEY (INDUCED POLARIZATION)**

- Axis of I.P. Chargeability High
- I.P. Chargeability High
- Magnetic High
- Roads from OBM map & Tenajon 1997 map (both at 1:20,000 scale)
- Roads from Triex 1998 I.P. map (scale 1:5,000)

**Rock Sample**  
 Tenajon Resources, 1997 (mapping at 1:20,000 scale)  
 Au (ppb)

- Gold in Rock Samples (ppb)**  
 Tenajon 1997 Rock Samples
- 1,000 to 3,100
  - 100 to 1,000
  - 0 to 100

- Gold in Humus (ppb)**  
 Triex 1998 Humus Samples
- 100 to 175
  - 50 to 100
  - 25 to 50
  - 10 to 25
  - 5 to 10

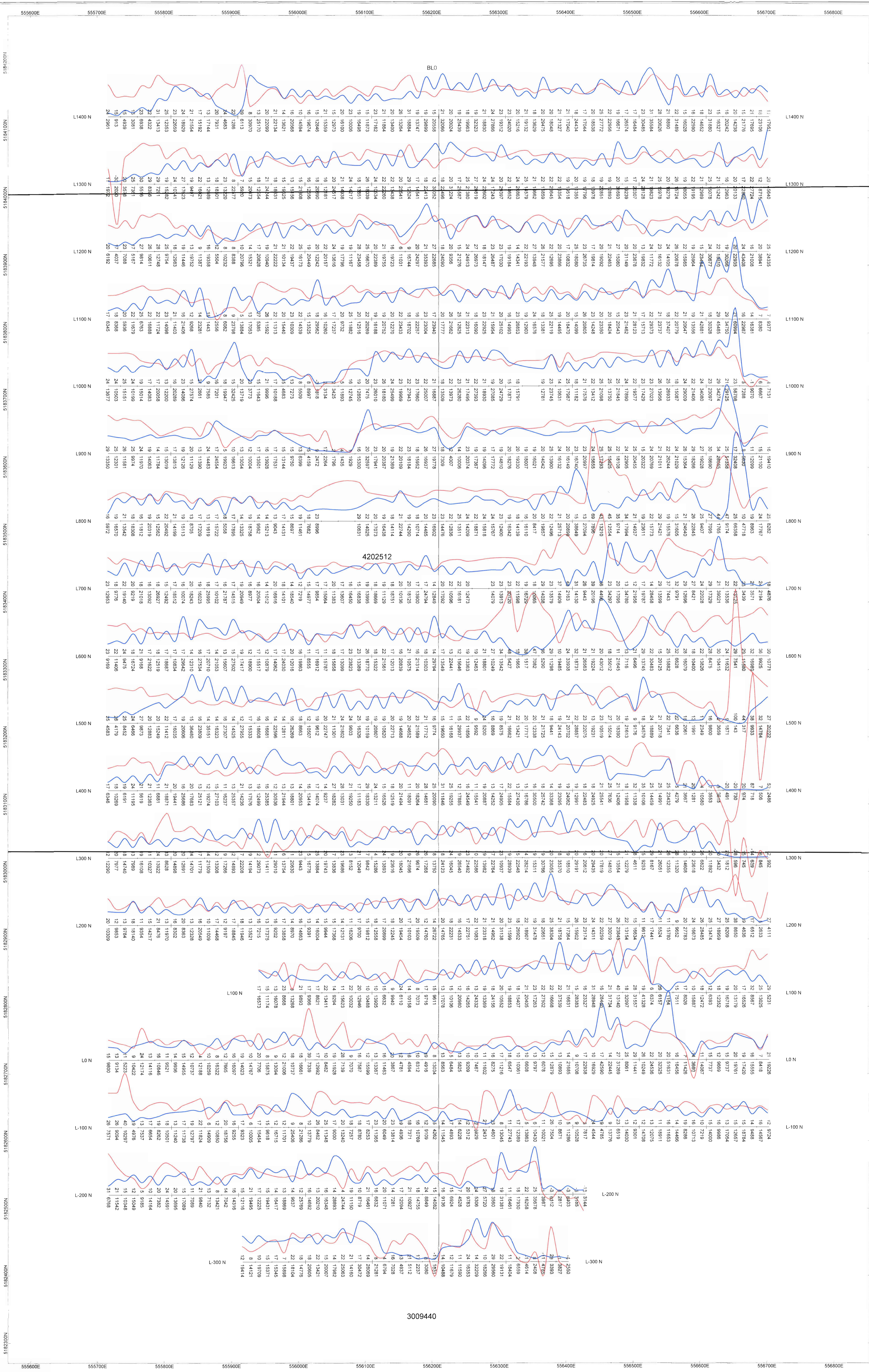


**ENDURANCE GOLD Corporation**  
**PARDO PROJECT**  
 Sudbury Area, Ontario  
**COMPILATION MAP**



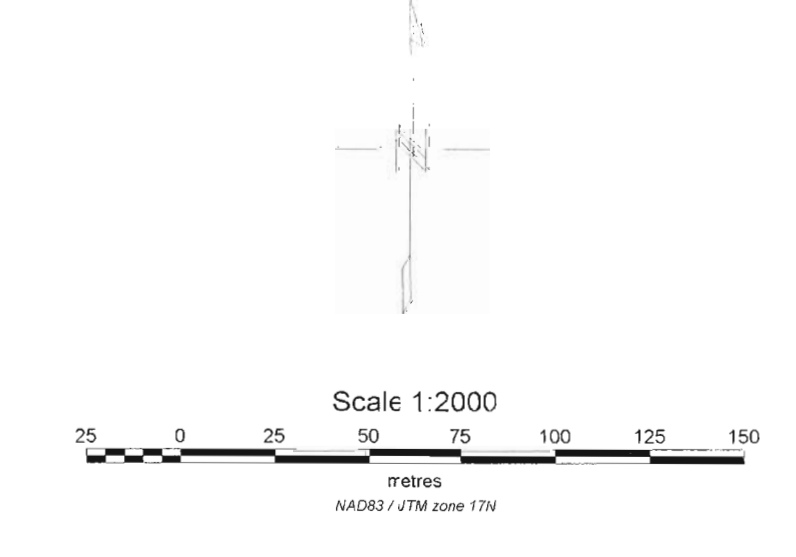
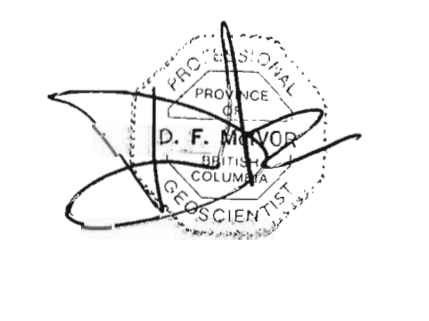
**NORTHERN MAPPING:**  
 Geologic Mapping by Tenajon Resources (Clark-Eveleigh Consulting), 1997.  
**SOUTHERN MAPPING:**  
 Geologic Mapping by Pickle Crow Gold Mines, 1956.

Projection: UTM Zone 17  
 Datum: NAD83



518200N  
518100N  
518000N  
517900N  
517800N  
517700N  
517600N  
517500N  
517400N  
517300N  
517200N  
517100N  
517000N  
516900N  
516800N  
516700N  
516600N  
516500N  
516400N  
516300N  
516200N  
516100N  
516000N  
515900N  
515800N  
515700N  
515600N  
515500N  
515400N  
515300N  
515200N  
515100N  
515000N  
514900N  
514800N  
514700N  
514600N  
514500N  
514400N  
514300N  
514200N  
514100N  
514000N  
513900N  
513800N  
513700N  
513600N  
513500N  
513400N  
513300N  
513200N  
513100N  
513000N  
512900N  
512800N  
512700N  
512600N  
512500N  
512400N  
512300N  
512200N  
512100N  
512000N

55600E  
55700E  
55800E  
55900E  
56000E  
56100E  
56200E  
56300E  
56400E  
56500E  
56600E  
56700E  
56800E



ENDURANCE GOLD OPERATIONS  
 PARDO TOWNSHIP GRID  
 GRADIENT IP SURVEY - PROFILES  
 PRELIMINARY APRIL 2007  
 DIPOLE SEPARATION = 100 m  
 RED PROFILE = IP BLUE PROFILE = RESISTIVITY  
 IP RX = ELREC IP-6  
 AB LINE 100N AT 1300W AND 1300E  
 SURVEYED BY: R MEKLE AND ASSOCIATES