

TRIGAN RESOURCES INC.
ASSESSMENT REPORT FOR CLAIM 1240157
EAST GABBRO PROPERTY
METHUEN TOWNSHIP, SOUTHERN ONTARIO DISTRICT

2. 370 5 3



Don Phipps
February 04, 2008

CONTENTS

	Page
SUMMARY	2
INTRODUCTION	2
PROPERTY	
Location and Access	2
Property Description and Status	3
REGIONAL GEOLOGY	3
PROPERTY GEOLOGY	3
WORK CARRIED OUT	4
Introduction	4
Geological Mapping	4
CONCLUSIONS AND RECOMMENDATIONS	4
STATEMENT OF QUALIFICATIONS	6
FIGURES	
Figure 1: General Location Map	
Figure 2: Claim Location Map	
Figure 3: Geological Mapping	In pocket

SUMMARY

Trigan Resources of Aurora, Ontario owns a block of Mining Leases in the southeast part of Methuen Township, covering most of a gabbroic body known as the East Gabbro. Claim 1240157, consisting of four units, was staked in 2004 to cover a portion of the gabbro not covered by the mining leases. Previous work on the claim in 2005 consisted of geological mapping of the eastern half of the claim to determine the location of the northern boundary of the gabbro intrusion and to make a preliminary assessment of the gabbro.

The most recent assessment work carried out on the claim in late 2007 consisted of mapping of the west half of the claim and delineation of the northern contact of the gabbro with predominantly granitic gneisses. Most of the claim lies within the gabbro intrusion. The contact of the gabbro with the gneisses trends northeasterly across the northwest corner of the claim. Further assessment of the gabbro in this area as a high quality aggregate source will require core drilling to obtain fresh material for aggregate testing.

INTRODUCTION

Trigan Resources owns a block of Mining Leases in Methuen Township South initially obtained to cover ilmenite mineralization hosted by a gabbro body. More recently work has focused on the high quality, bedrock aggregate resource of the gabbro hosting the ilmenite mineralization. Claim 1240157 was staked in January 2004 to cover a northern portion of the gabbro not covered by the mining leases (Figure 2).

Previous work on the eastern half of the claim consisted of geological mapping, determination of the northern limit of the gabbro, and confirmation of the continuity of favourable gabbro south of the northern contact.

This report describes the results of similar work carried out in late 2007 on the western half of the claim.

PROPERTY

Location and Access

Claim 1240157 consists of four units occupying Lot 10 Concession 3 of Methuen Township in Southern Ontario Mining District approximately 25 km north of the town of Havelock (Figures 1 and 2). Regional Road 46 is located approximately 1 km east of the claim. A gravel road running west from Regional Road 46 gives access to the northeast corner of the claim (Figure 3).

The topography of the property is gently undulating covered by mainly deciduous forest interspersed with frequent areas of swamp. There is 10 to 15% rock exposure which occurs mainly as low inconspicuous outcrops, and areas of in situ frost heaved boulders.

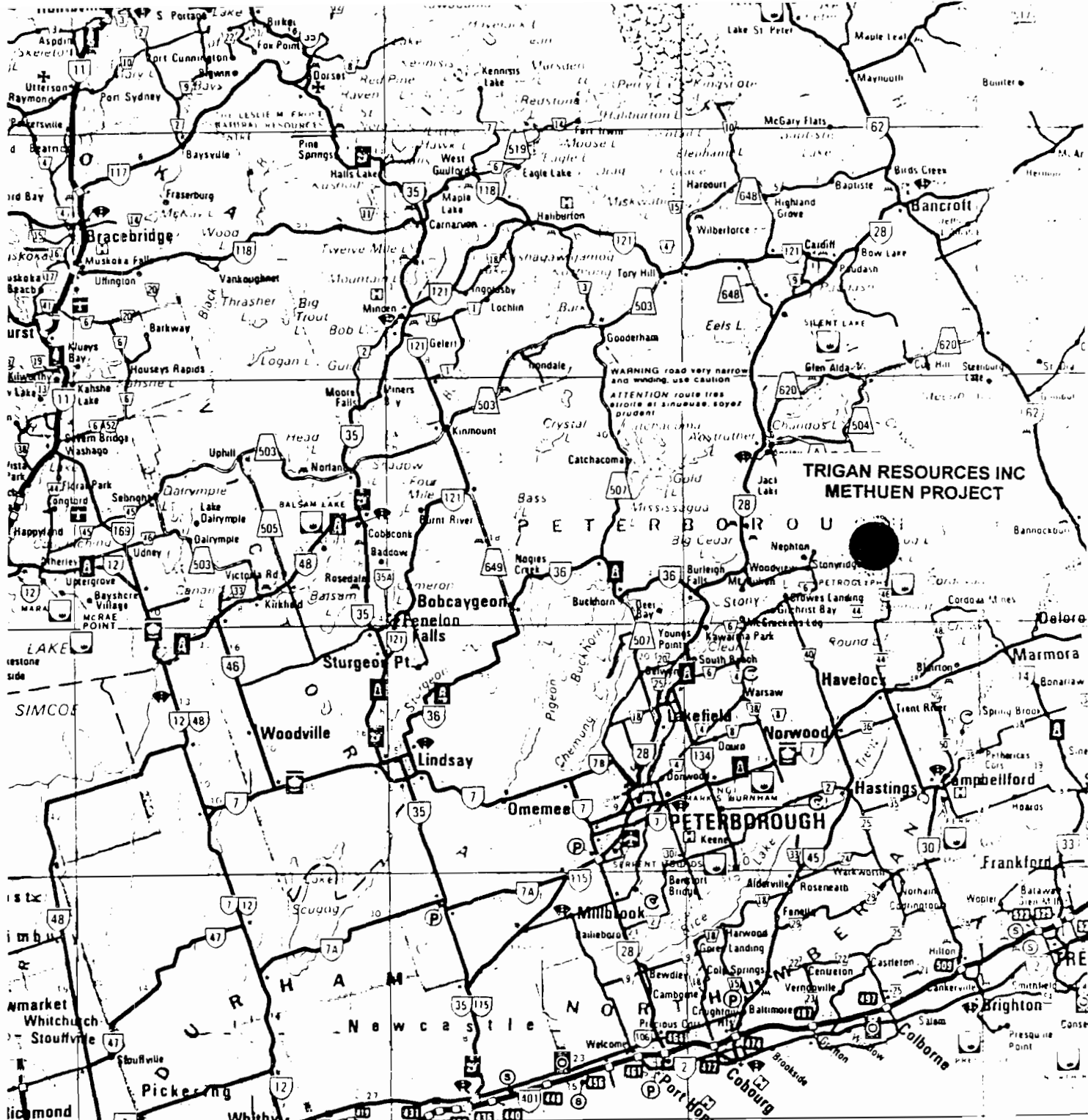
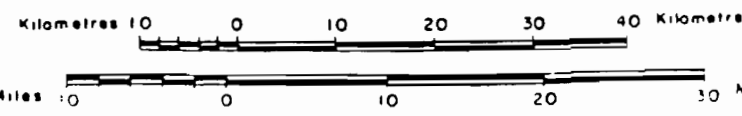


FIGURE 1

**GENERAL LOCATION MAP
METHUEN PROJECT
METHUEN TOWNSHIP
PETERBOROUGH COUNTY, ONTARIO**

NTS 31 C

Scale 1:800 000



Property Description and Status

Claim 1240157 is registered in the name of Trigan Resources Inc. 445 Beacon Hall Drive, Aurora, Ontario, L4G 3G8. The Claim consists of four units located in Concession 3 Lot 10 of the southern half of Methuen Twp in Southern Ontario. The claim was recorded January 13th, 2004 and was due for renewal January 13th, 2008. An extension of the renewal date to February 13th 2008 was applied for and granted.

REGIONAL GEOLOGY

Methuen Township is underlain by mainly northeast-trending Late Precambrian, Grenville metasedimentary rocks intruded by younger granitic gneisses, granites syenites and gabbros. The metasedimentary rocks have been subjected to multiphase deformation and regional metamorphism. Contact metamorphism is evident especially around some of the gabbroic intrusives. Flat lying Ordovician limestone and dolomitic limestone occurs as isolated outliers in the southern part of the Township (ODM Map 1960e).

Two ovoid-shaped, easterly-trending, basic to intermediate intrusions semi-conformably intrude the Grenville metasediments in the area of the property. These two intrusions, referred to as the East Gabbro and the West Gabbro, vary in composition through gabbroic anorthosite to gabbro to monzonite. The gabbroic anorthosite and gabbro portions of the intrusions are the focus for the establishment of an aggregate resource. In the easternmost part of the Eastern Gabbro, gabbroic anorthosite hosts a pipe-like occurrence of semi-massive to massive ilmenite mineralization. The use of this ilmenite rich body as a source of material for heavy aggregate is being investigated.

PROPERTY GEOLOGY

Claim 1240157 covers a portion of the northern part of the East Gabbro (Figure 3) where it is in contact with mainly gneissic arenaceous metasediments (paragneisses).

The gabbro typically is a medium grained, grey, mesocratic rock consisting of mainly plagioclase with lesser amounts of mafic minerals (augite and/or hornblende); at some locations it could be described as an anorthositic gabbro.

Near surface, weathering of this rock imparts a pinkish hue to the plagioclase, misleadingly giving it the appearance of a more leucocratic acidic rock.

The contact between the gabbro and the country rock metasediments is diffuse. In the contact area, inclusions of metasediments become common and the gabbro is notably finer grained. Compositional differences, in the gabbro, especially in the contact zone, are present due to contamination of the gabbroic magma by absorbed metasediments.

No evidence of significant ilmenite mineralization was found on Claim 1240157.

WORK CARRIED OUT

Introduction

Previous work by Trigan Resources on the East Gabbro, east of Regional Road 46, has established a resource of high quality bedrock aggregate in the area of the gabbro southeast of the titanium occurrence. The most recent work was carried out to determine if the same quality of gabbro extends to the west of Regional Road 46. The work on Claim 1240157 is a part of this evaluation. Assessment work on the eastern half to the claim was filed in January 2006 (W0690.00028)

Mapping of outcrops on the western half of claim 1240157 was undertaken to continue the mapping from the eastern half. The main objective was to define the northern limit of the gabbro and to confirm the continuity of the favourable gabbro in the area south of the northern contact.

Geological mapping was carried out over a period of 2.5 days (November 2nd 2007 and January 10-11th 2008) by Rob West of Oakridge Environmental Ltd, 380 Armour Road, Suite 127, Peterborough, Ontario, K9H 7L7 (phone: 705-745-1181).

Don Phipps, geological consultant and agent for Trigan Resources Inc. wrote this assessment report based on the information supplied by Rob West of Oakridge Environmental Ltd.

Geological Mapping

Because of the many swamps in the area, straight line traversing was not practical. Instead, in the areas between swamps a random walk was made searching out areas of outcrop and locating UTM position using a GPS with an accuracy of ~ 6 m. GPS points with rock type are plotted on a 1:2000 map (Figure 3).

The northern contact of the East Gabbro was traced southwesterly from the northeast corner of the west half of the claim. Gneissic metasediments with conformable granitic and gabbroic zones occur northwest of the contact, and gabbro southeast of the contact. Approximately two thirds of the western half of claim 1240157 is underlain by the East Gabbro intrusion.

Surface weathering of the gabbro outcrops commonly results in a lightening of the colour of the plagioclase such that the rock appears more leucocratic and less basic in composition. Thus variations in the macroscopic classification of rocks of the gabbroic intrusion can be ascribed to the degree of weathering in an outcrop.

More details of the lithology are described in the "Property Geology" section above.

CONCLUSIONS AND RECOMMENDATIONS

On the western half of claim 1240157, the contact between the host paragneissic and granitic terrain and the East Gabbro intrusion trends southwesterly from the northeast east corner; approximately two thirds of the west half of the claim is underlain by the gabbro intrusion.

The country rock intruded by the gabbro is predominantly a gneissose felsic metasediment which also includes some mafic bands of gabbroic composition and zones of unfoliated granite. The gneissosity is generally conformable with the gabbro contact.

The gabbro is predominantly a medium grained unaltered rock with varying concentrations of metasedimentary inclusions. The frequency of these inclusions tends to increase towards the northern contact. Outcrops of the gabbro show some surficial weathering. Variations in the colour of the gabbro are believed to be more an indication of the degree of weathering rather than variations in composition.

It is concluded that the favourable gabbro defined on the east side of Regional Road 46, extends westward to the west of the road. However, conclusive assessment of the gabbro as a high quality aggregate will require the testing of unweathered material by diamond drilling and sampling.

STATEMENT OF QUALIFICATIONS

The writer of this report, Don Phipps, is the Geological Consultant to Trigan Resources Inc. He is a certified member of the APGO, a member of the Canadian Institute of Mining and Metallurgy, and the Prospectors and Developers Association of Canada. The professional qualifications of the writer include the following.

Graduate of the Camborne School of Mines with Mining Diploma (1954)

Graduate of McGill University, B.Sc. Honours Geology (1962)

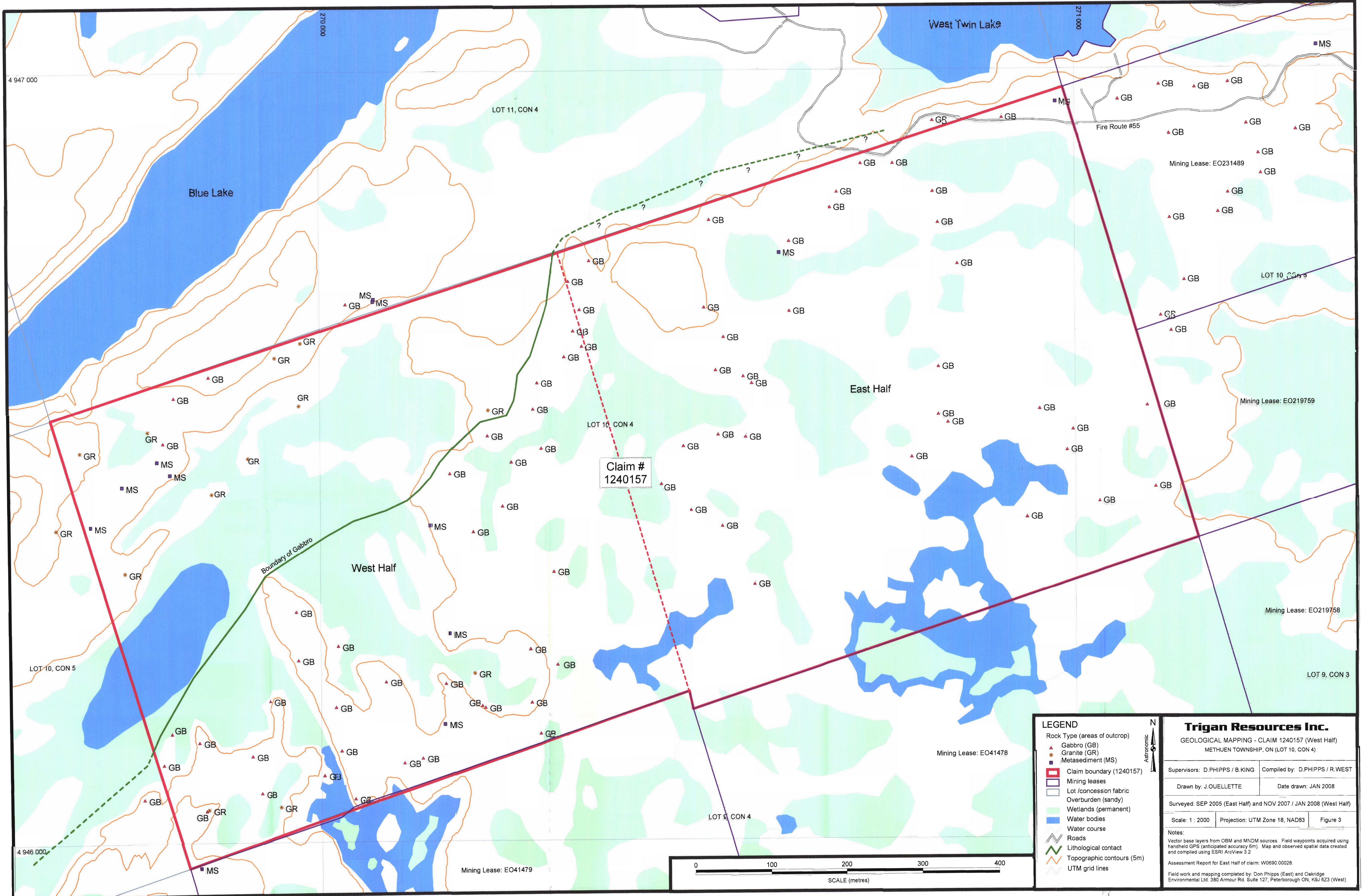
Graduate of the Massachusetts Institute of Technology, M.Sc. in Oceanography (1964)

Over 35 years as a practicing geologist, mainly in the field of mineral exploration.

A registered member of the Association of Professional Geoscientists of Ontario.

Donald Phipps
.....





Claim #
1240157

LEGEND

- Rock Type (areas of outcrop)
 - ▲ Gabbro (GB)
 - Granite (GR)
 - Metasediment (MS)
- ▭ Claim boundary (1240157)
- ▭ Mining leases
- ▭ Lot /concession fabric
- ▭ Overburden (sandy)
- ▭ Wetlands (permanent)
- ▭ Water bodies
- ▭ Water course
- ▭ Roads
- ▭ Lithological contact
- ▭ Topographic contours (5m)
- ▭ UTM grid lines

Trigan Resources Inc.
GEOLOGICAL MAPPING - CLAIM 1240157 (West Half)
METHUEN TOWNSHIP, ON (LOT 10, CON 4)

Supervisors: D.PHIPPS / B.KING	Compiled by: D.PHIPPS / R.WEST
Drawn by: J.OUELLETTE	Date drawn: JAN 2008
Surveyed: SEP 2005 (East Half) and NOV 2007 / JAN 2008 (West Half)	
Scale: 1 : 2000	Projection: UTM Zone 18, NAD83
Figure 3	

Notes:
Vector base layers from OBM and MNDM sources. Field waypoints acquired using handheld GPS (anticipated accuracy 6m). Map and observed spatial data created and compiled using ESRI ArcView 3.2
Assessment Report for East Half of claim: W0690.00028
Field work and mapping completed by: Don Phipps (East) and Oakridge Environmental Ltd. 380 Armour Rd. Suite 127, Peterborough ON, K9J 6Z3 (West)

