

Work Report

2007

TRENCHING

PENSE TOWNSHIP (M-0566)

CLAIM # 3013188

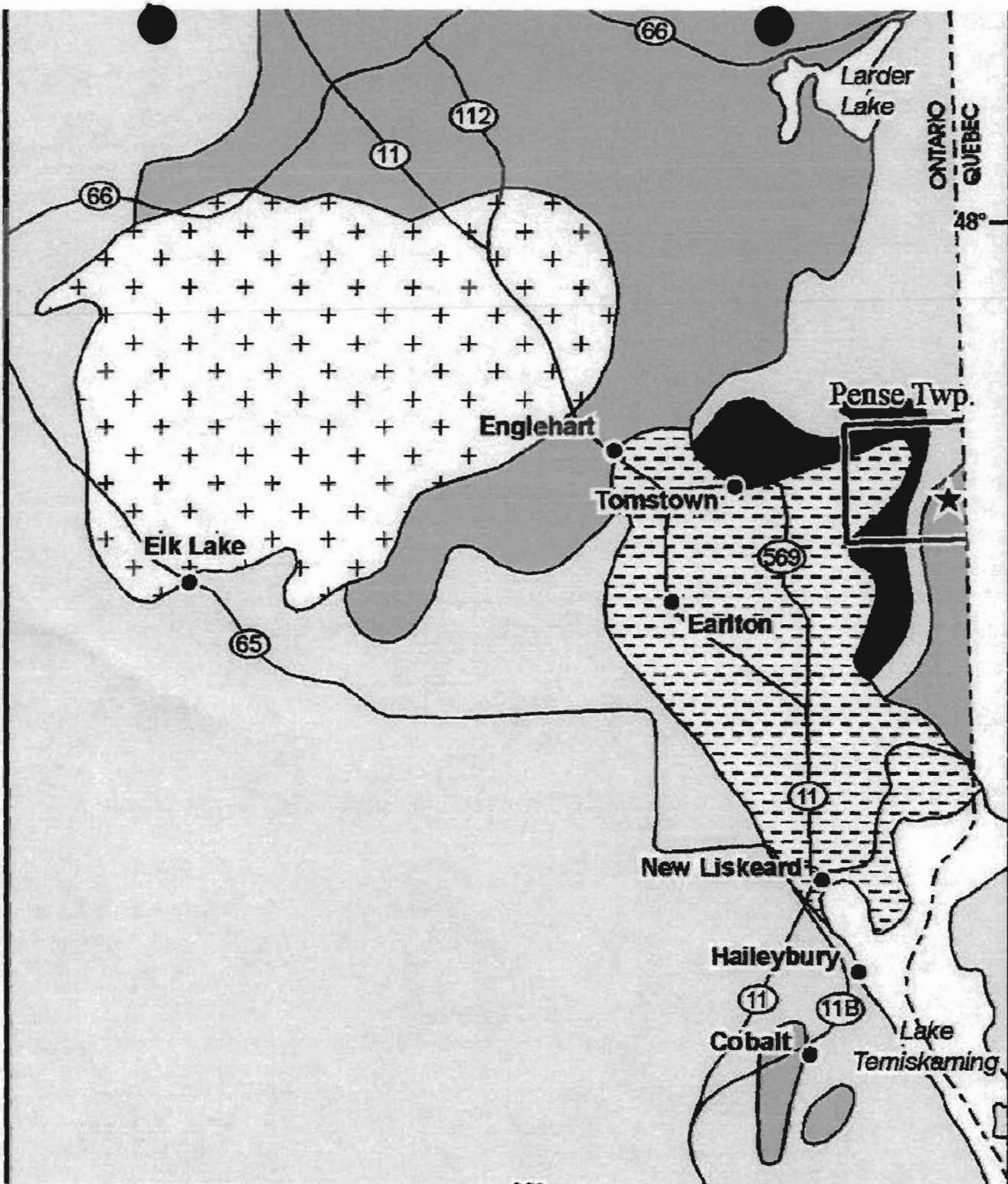
LOT 10 & 11, CON 3







Michael Gagne

Yvon Gagne



2.35967

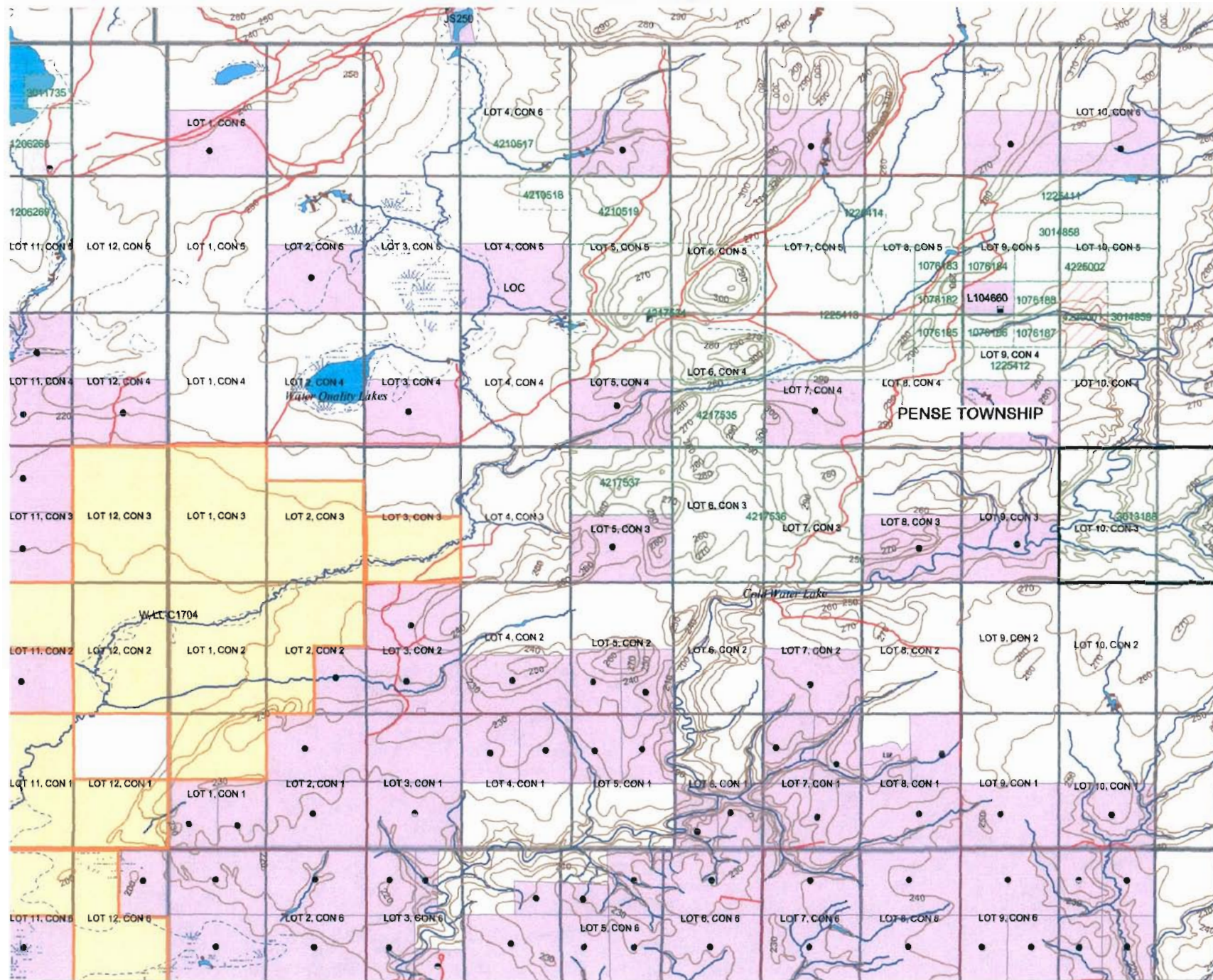


-  Phanerozoic sediments
-  Nipissing diabase sills
-  Proterozoic metasediments (Cobalt Group) and Nipissing diabase
-  Archean granitoid rocks
-  Neoproterozoic metasediments and metavolcanic rocks (Pontiac Subprovince)
-  Pense Township zinc occurrence



20 kilometres





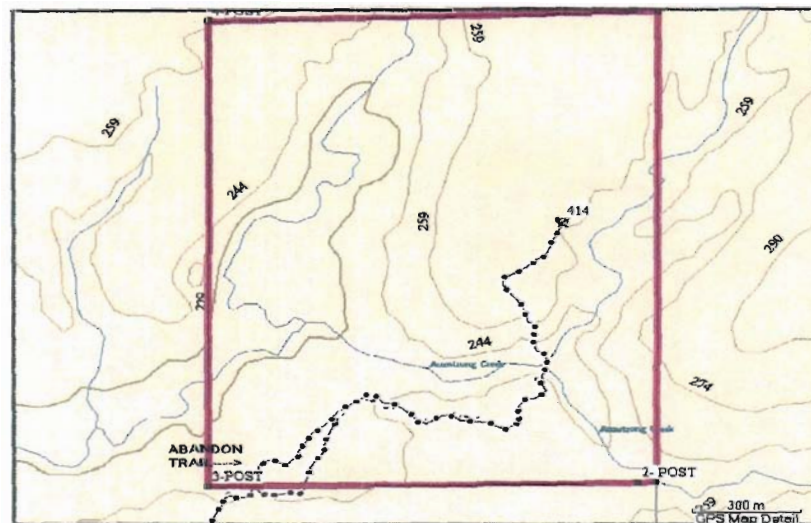
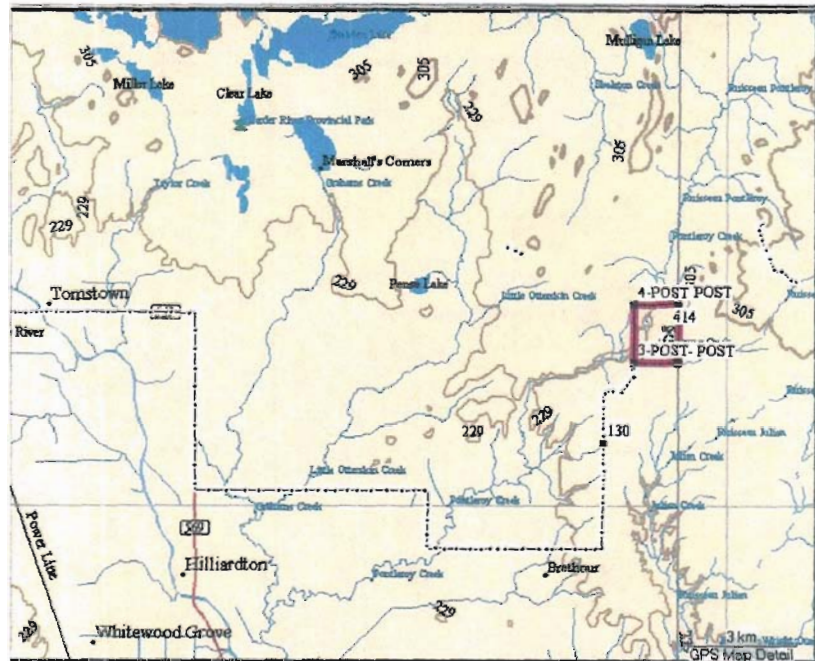
QUEBEC

WORK REPORT 2007

PENSE TOWNSHIP

Two trenches were done on claim 3013188 in Pense Township, lot 10 & 11, Consession 3, Larder Lake Division, during July 11 to August 21, 2007.

Access to the trenches can be reached from highway 11 just south of Englehart. Turning east off highway 11 onto highway 569 and traveling 16 kilometers to the Woolings Road. After turning east on the Woolings Road follow east for 11 kilometers until you turn north on the Flood Dam Road for 2 kilometers. All terrain vehicle are taken from (way point 130) for 6.5 km on a new cut trail to the trenches.



PENSE TWP.
claim # 3013188

4-POST 347

1-POST

TRENCH

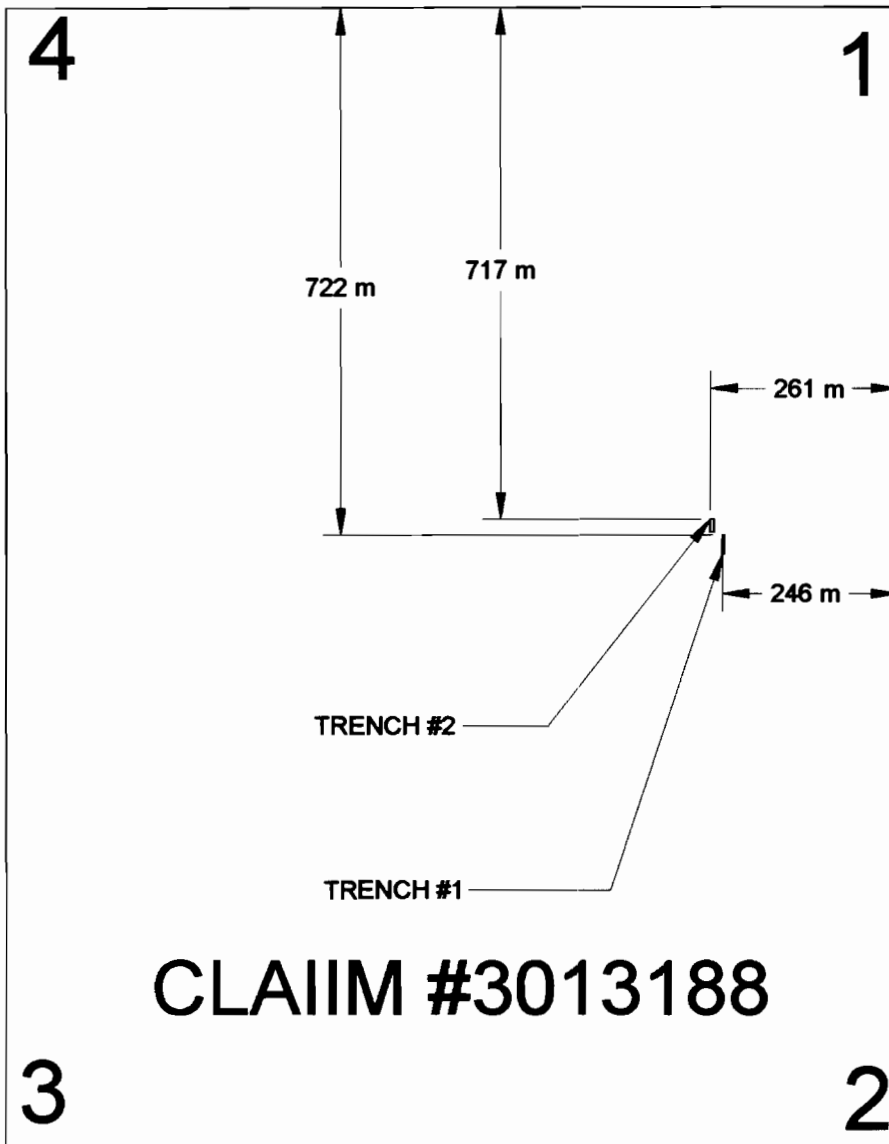
414

ATV.
TRAIL

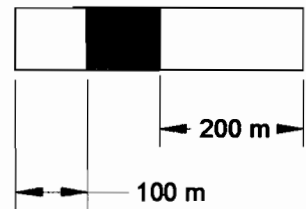
3-POST 3-POST

St./Pr

PLAN VIEW



scale 200



All trenching was done by myself (Michael Gagne) and Yvon Gagne. Renting an Atlas Copco , Cobra gas plugger for \$100.00 per day.

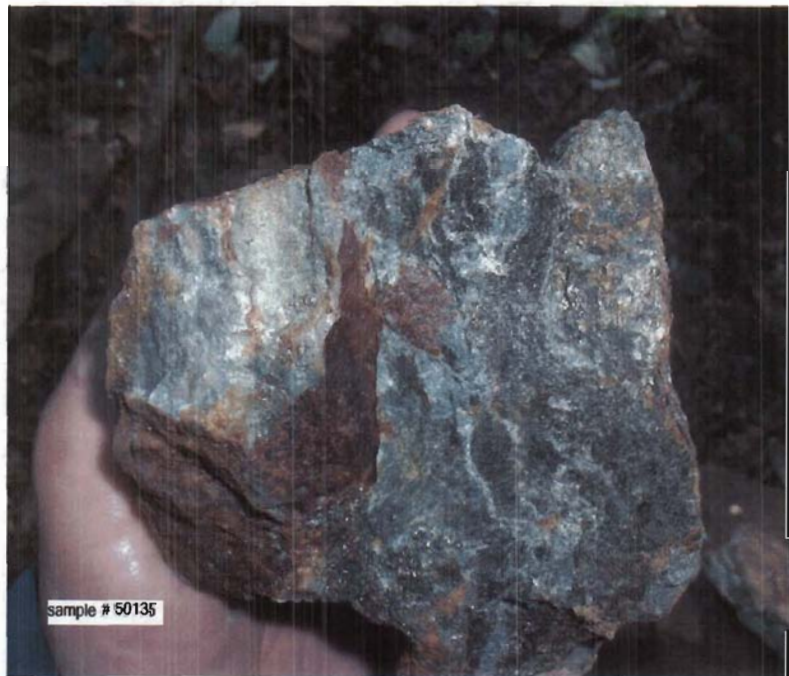
Trench #1, 10 meters long by 1 meter wide and 1 meter deep was trenched along a side of a ridge. This trench was to investigate a magnetic attraction on the compass. Picture was taken near the middle of the trench looking northwest. Left-hand corner of picture is sulphides with pyrrhotite, pyrite, sphalerite, chalcopyrite the cause of the magnetic attraction



sulphide stringers from #1 trench.

right- side of sample has disseminated sulphides, pyrrhotite, pyrite, chalcopyrite

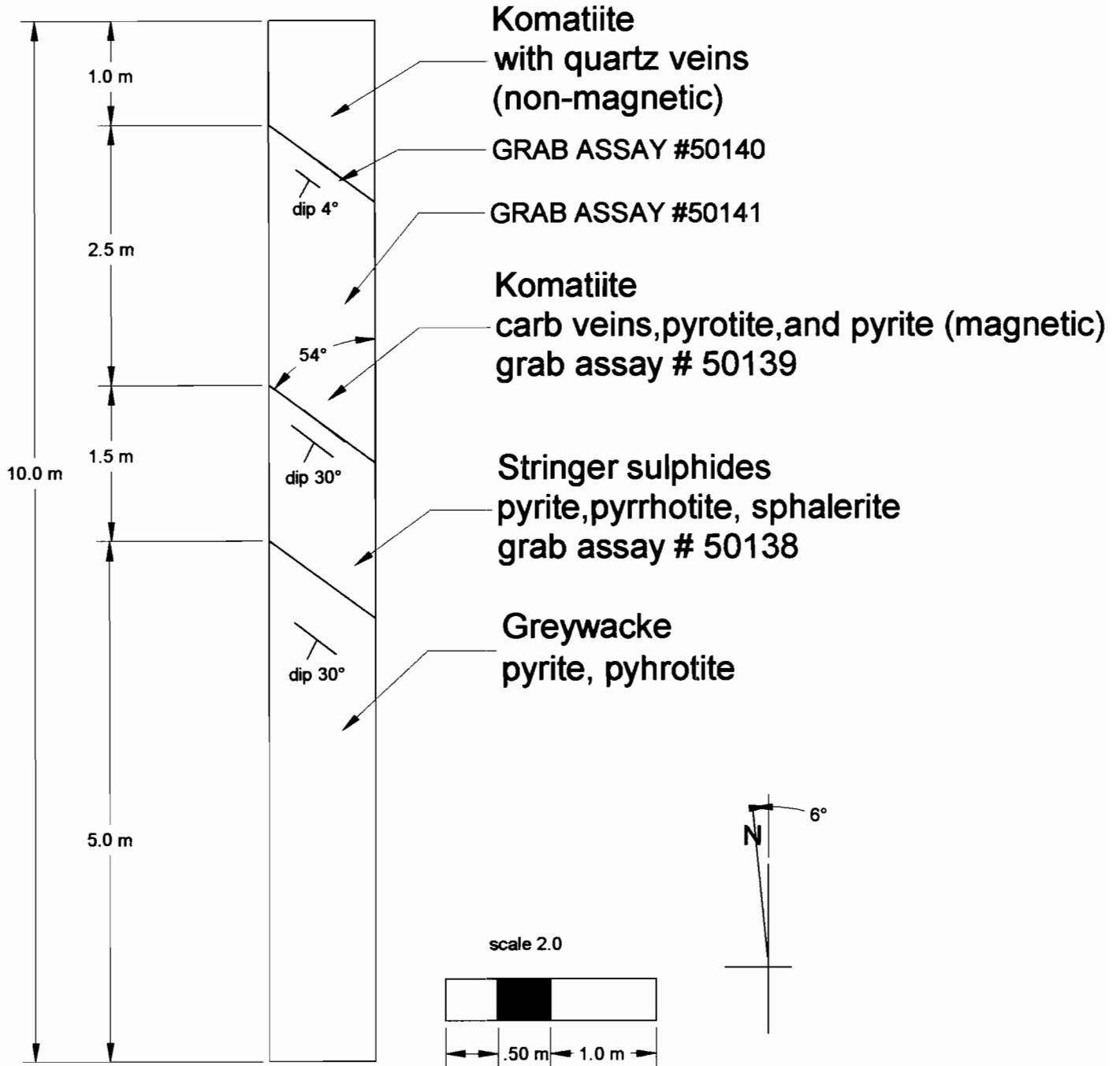
Trench #2 was to investigate the gossion showing being close to strike with #1 trench. Trench # 2 was 5 meters long by 1 meter wide. Another lift was taken in this sulphides because of leaching, making this part 1 meter deep in massive sulphides in contact with a shear zone. The rest of the trench is 0.5 meters deep. Picture (looking north)



Work Schedule Pense claims 2007

- Day 1 -July 11 12 hrs. -find access to showing to make trail
- Day 2 -July 12 12 hrs. - find easy way to cross creek (ridges close to Armstrong Creek are very steep, and if not steep, flooded by beavers)
- Day 3 -July 13 12 hrs. - clear up old trail to hunters camp, start to cut new trail (old cut, lots of alders)
- Day 4 - July 14 12 hrs. -cutting trail- getting into old growth
- Day 5 -July 15 12 hrs.- cutting trail- had to abandon part of trail, way too steep for ATV. Unsafe
- Day 6 -July 16 12 hrs. -cutting trail- move trail away from creek
- Day 7 -July 17 10 hrs.- cutting trail - made it to showing (see map at beginning of report, mapped by a Garmin GPSmap 76, accuracy 2-10 meters)
- Day 8 -July 18 12 hrs. -bring in plugger and supplies, strip area for trench #1,
- Day 9 -July 19 12 hrs. - start drilling, blast at end of shift.
- Day 10 - july 20 12 hrs.- trenching #1
- Day 11 -August 18-12 hrs.- clear area for trench# 2, start drilling
- Day 12 -August 19-12 hrs.- drill and blast, start mucking out
- Day 13 -August 20-12 hrs. -finish off mucking, start taking another lift in sulphides, muck
- Day14 -August 21- 8 hrs.- finish mucking out, grab assays, haul gear & supplies out.

#1 Trench Pense Township claim #3013188





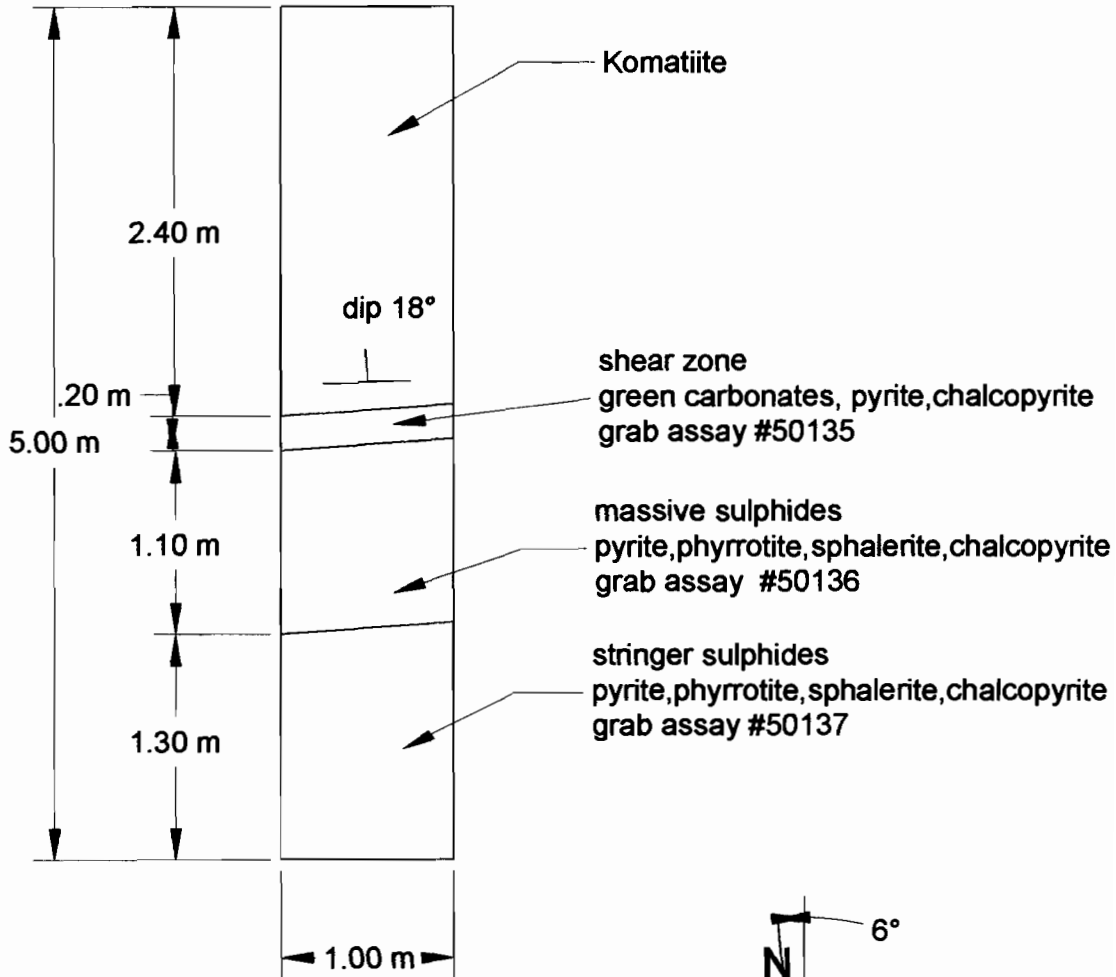
stringer sulphides

komatiite- non magnetic

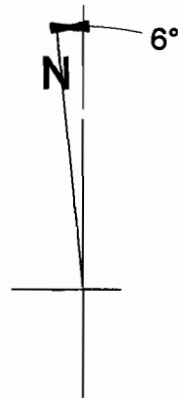
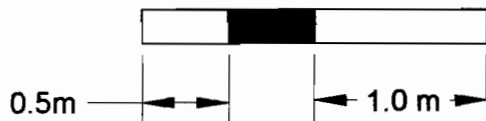
komatiite- magnetic
carbns and quartz veins
with pyrite,pyrrhotite


#1 trench, looking
northwest from middle of
trench

#2 Trench Pense Township claim 3013188



scale 1.0





#2 TRENCH

LOOKING NORTH

Sample number	description	location
50135	shear zone north of massive sulphides	2 trench
50136	massive sulphides	2 trench
50137	massive sulphides	2 trench
50138	sulphide stringers	1 trench
50139	basalt with carbs.	1 trench
50140	contact north-side of pit	1 trench
50141	basalt with pyrite,pyrrhotite	1 trench



Established 1928

Swastika Laboratories Ltd

Assaying - Consulting - Representation

Geochemical Analysis Certificate

7W-2801-RG1

Company: **YVON GAGNE**

Date: AUG-30-07

Project:


Attn: Y. Gagne

We hereby certify the following Geochemical Analysis of 7 Rock samples submitted AUG-22-07 by .

Sample Number	Au PPB	Au Check PPB	Ag PPM	Cu PPM	Cu %	Ni PPM	Zn PPM	Zn %
50135	Nil	-	3.2	>10000	1.31	1300	866	-
50136	2	-	0.9	1530	-	3200	1990	-
50137	Nil	Nil	1.2	2700	-	2850	1560	-
50138	Nil	-	2.1	1840	-	1810	>10000	1.19
50139	Nil	-	0.9	591	-	971	109	-
50140	Nil	-	-	-	-	-	-	-
50141	Nil	-	-	-	-	-	-	-

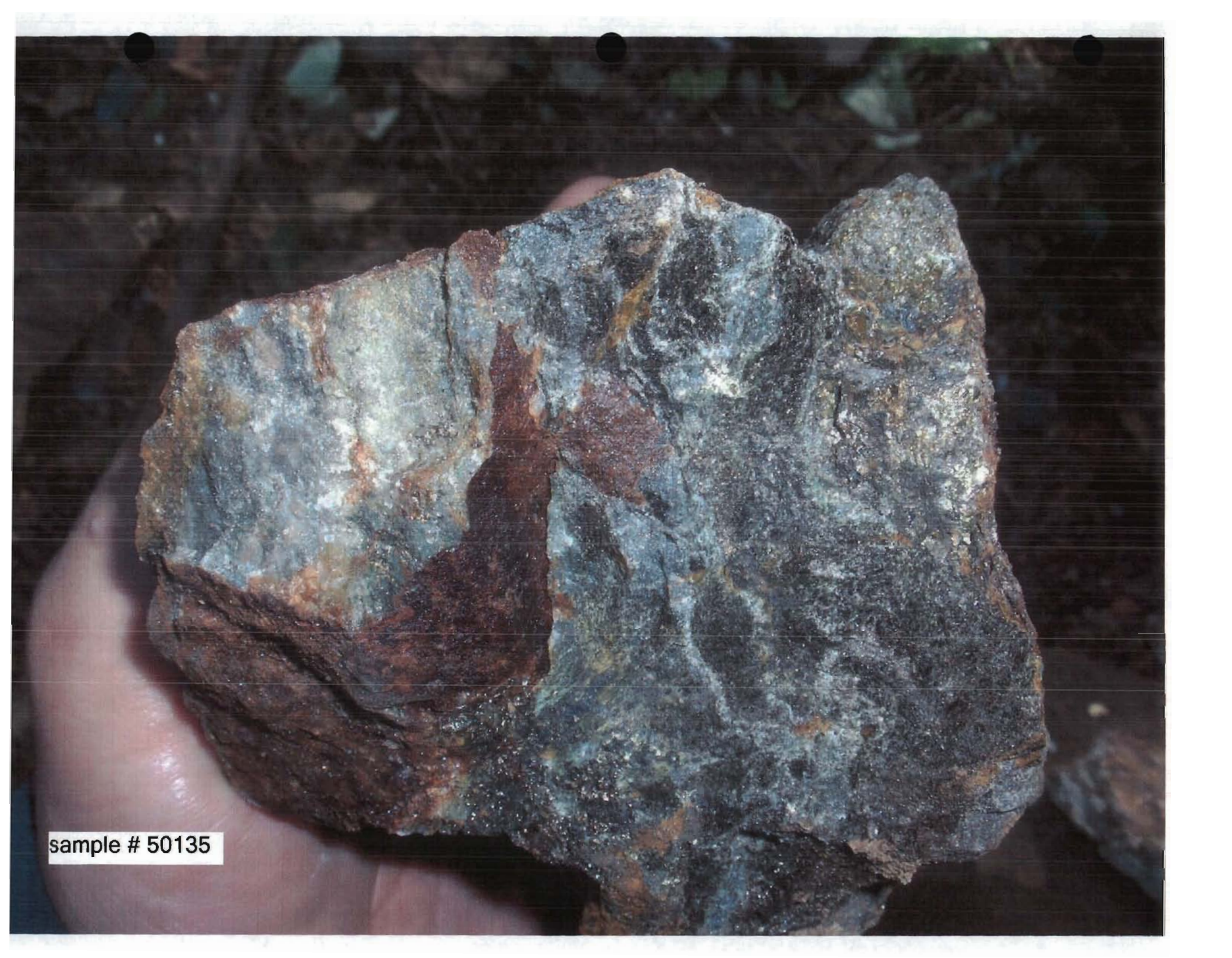
Certified by 

1 Cameron Ave., P.O. Box 10, Swastika, Ontario P0K 1T0
Telephone (705) 642-3244 Fax (705) 642-3300



#1 TRENCH
SULPHIDE STRINGERS

assay # 50138

A photograph of a hand holding a large, dark, layered rock specimen. The rock has a dark grey to black color with visible horizontal layering. A prominent reddish-brown stain is visible on the left side of the specimen. The background is dark and out of focus. Three black circular marks are visible at the top of the image, likely from a scanner or punch holes.

sample # 50135