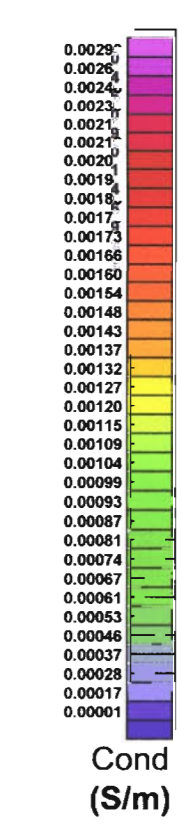


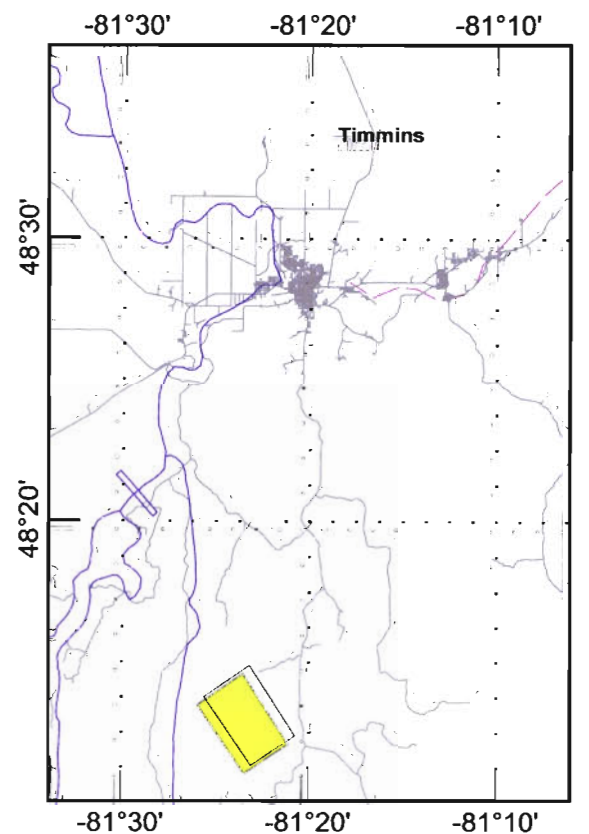
SURVEY SPECIFICATIONS:
 Survey date: May 8 - 14, 2006
 Traverse line spacing: 100 metres
 Traverse line direction: N65°E
 Nominal terrain clearance: 80 metres
 Nominal EM bird height: 30 metres
 Nominal magnetic bird height: 30 metres
 Aircraft: AS350 B2 helicopter, Registration C-FBTW

INSTRUMENTATION
 Data acquisition: Geotech Acquisition System
 Electromagnetics: VTEM system
 Base frequency: 30Hz
 Transmitter Loop diameter: 26 metres
 Dipole Moment: 380,000 N/A
 Transmitter Wave Form: Trapezoid
 Transmitter Pulse Width: 7.5 ms
 Magnetometer: Geometrics G-823A cesium vapour
 Resolution: 0.02 nT at 10 samples/sec

NAVIGATION:
 Equipment: NovAtel GPS card
 Radar altimeter: Terra TRA3000/TRI-40



Legend:
 Roads
 Lakes, Rivers
 Utility lines
 Railways
 Swamps



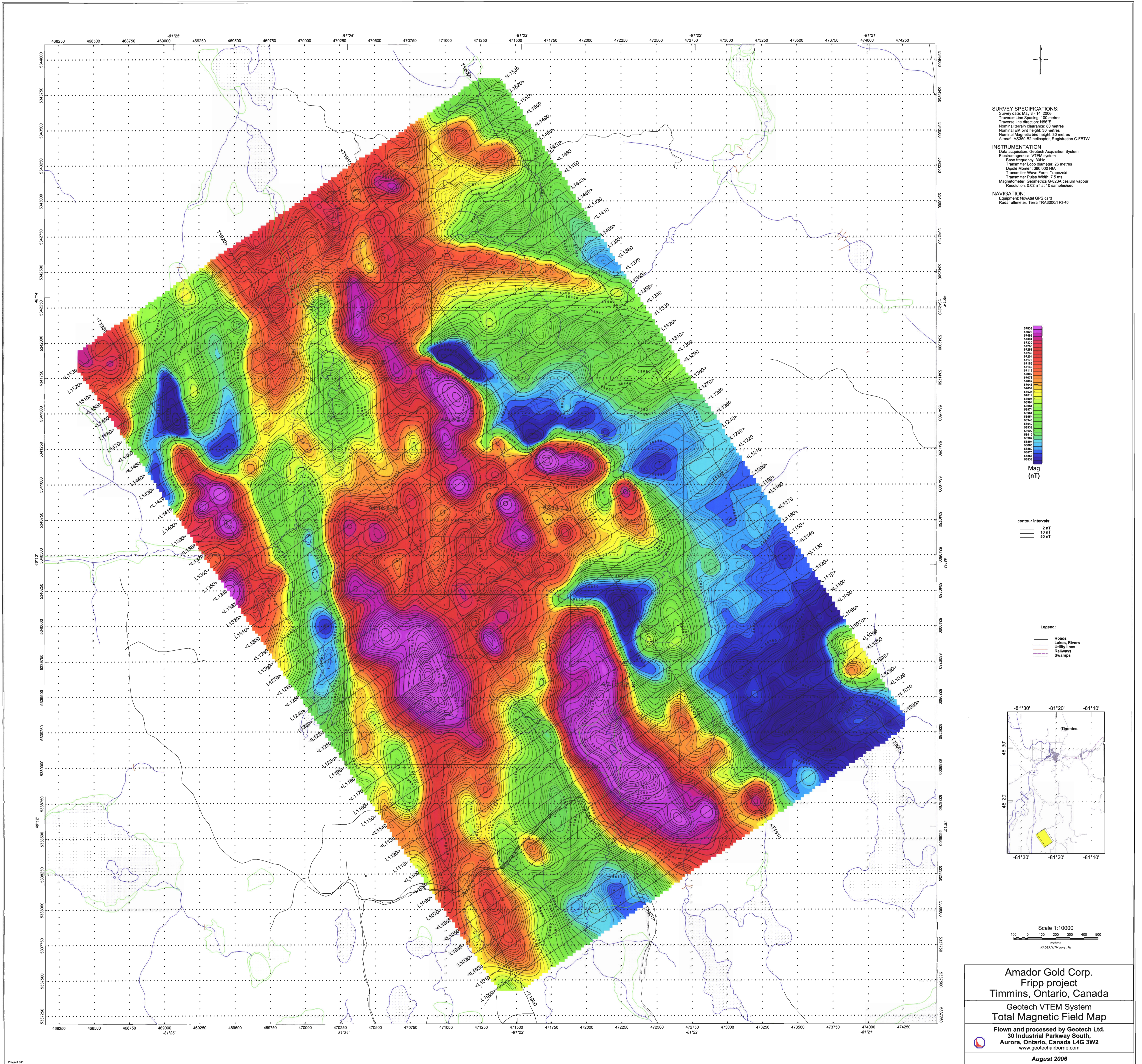
Scale 1:10000
 100 0 100 200 300 400 500
 metres
 NAD83 / UTM zone 17N

Amador Gold Corp.
 Fripp project
 Timmins, Ontario, Canada

Geotech VTEM System
 Apparent Conductivity Map
 Time Gate 3180 ms

Flown and processed by Geotech Ltd.
 30 Industrial Parkway South,
 Aurora, Ontario, Canada L4G 3W2
 www.geotechairborne.com

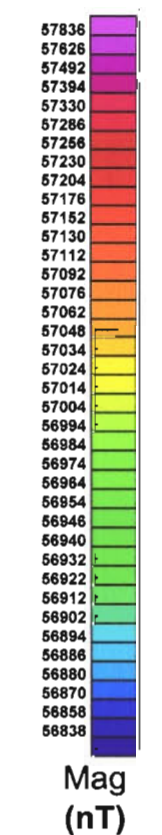
August 2006



SURVEY SPECIFICATIONS:
 Survey date: May 8 - 14, 2006
 Traverse Line Spacing: 100 metres
 Traverse line direction: N56°E
 Nominal terrain clearance: 85 metres
 Nominal EM bird height: 30 metres
 Nominal Magnetic bird height: 30 metres
 Aircraft: AS350 B2 helicopter, Registration C-FBTW

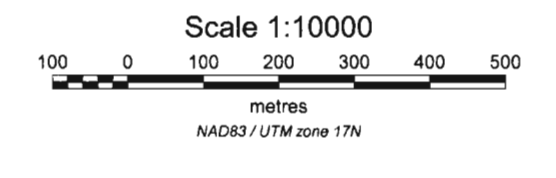
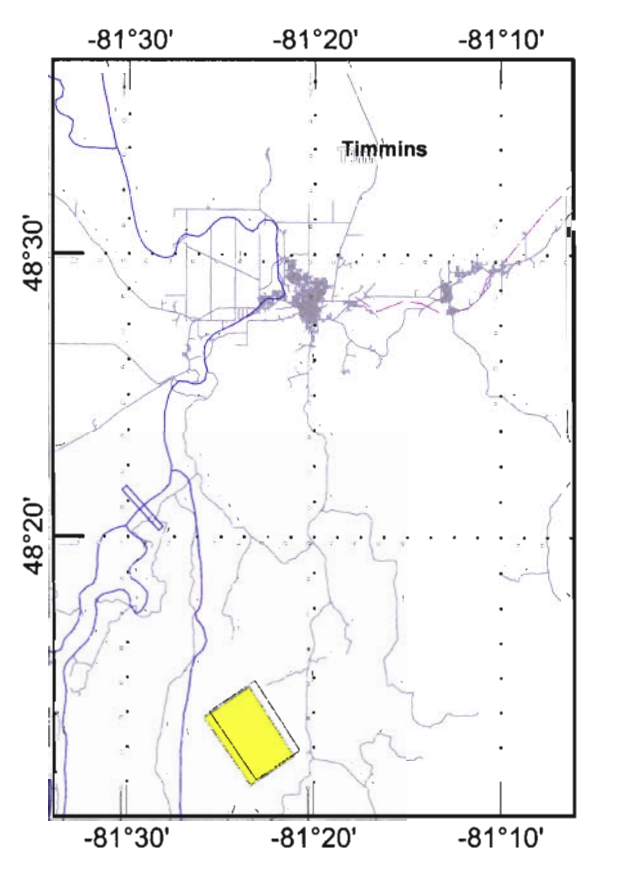
INSTRUMENTATION
 Data acquisition: Geotech Acquisition System
 Electromagnetics: VTEM system
 Base frequency: 30Hz
 Transmitter Loop diameter: 26 metres
 Dipole Moment: 380 000 N/A
 Transmitter Wave Form: Trapezoid
 Transmitter Pulse Width: 7.5 ms
 Magnetometer: Geometrics G-823A cesium vapour
 Resolution: 0.02 nT at 10 samples/sec

NAVIGATION:
 Equipment: NovAtel GPS card
 Radar altimeter: Terra TRA3000/TRI-40



contour intervals:
 2 nT
 10 nT
 50 nT

Legend:
 Roads
 Lakes, Rivers
 Utility lines
 Railways
 Swamps



Amador Gold Corp.
Frapp project
 Timmins, Ontario, Canada

Geotech VTEM System
Total Magnetic Field Map

Flown and processed by Geotech Ltd.
 30 Industrial Parkway South,
 Aurora, Ontario, Canada L4G 3W2
 www.geotechairborne.com

August 2006