

Report on Exploration of the Groves Property
Claim 1228922

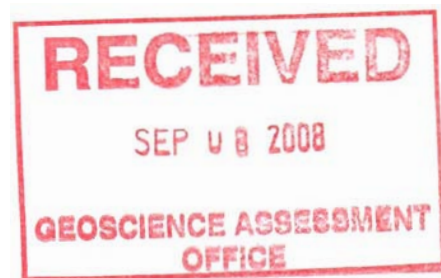
Sampling and Mapping Program

Groves Township
North Eastern Ontario

For

Liberty Mines Inc

2.39062



Tyron Breytenbach
September 2008

Table of Contents

1. Location and Access
2. Key Map
3. Regional Geology of the Groves Property
4. Current Work Program
5. Assay Results
6. Work Log
7. Detailed Plan of the Area
8. Conclusion and Recommendations.

Location and Access

The Groves property is located in North Eastern Ontario, 10km South East of the Village of Gogama, in Groves Township. Access is possible via two routes. By using the winter road which consists of a north trending series of lakes and bush roads accessed via Highway 560. The bush road is approximately 26km east from the intersection of Highway 560 and Highway 144. The road is not navigable until completely frozen over. In summer the property is routinely accessed via float plane, chartered out of Gogama to land on Groves Lake. From here it is a 4km walk south to the historical showing. See Figure 1: Key Location Map.

Property

The Groves property consists of a set of contiguous claims, the claims are listed below, the claim of interest for this report is highlighted (Claim 1228922)

TWP	NUMBER	DUE DATE
Groves	1228922	18/09/2008
Groves	4217801	06/09/2009
Groves	4217802	06/09/2009
Groves	4217803	06/09/2009
Groves	4217804	06/09/2009
Groves	4217809	06/09/2009
Groves	4217810	06/09/2009
Groves	4217817	06/09/2009
Groves	4217826	06/09/2009
Groves	4217827	06/09/2009
Groves	4217828	06/09/2009
Groves	4214921	19/09/2009
Groves	4217799	19/09/2009
Groves	4217800	19/09/2009
Groves	4217813	19/09/2009
Groves	4217814	19/09/2009
Groves	4217815	19/09/2009
Groves	4217816	19/09/2009
Groves	4217818	19/09/2009

Regional Geology of the Groves Property

The Groves property consists of metasediments and metavolcanics that have been intruded by a large, south-west to north-east trending Gabbro, about 500m wide. An accumulation of Ni-Cu hosting sulphides is known to occur within this intrusive body. A large north-west to south-east trending fault occurs on the eastern edge of the property. The historical deposit seems to be related to a minor structure within the intrusive Gabbro.

Current Work Program

The work covered by this report involved a reconnaissance visit by Liberty's exploration team to the historical deposit. It was the first time this group had visited the property. Activities involved gps locating historical drill holes to reference them for later drilling projects. Sampling of the surface showings and mapping of the structure that hosts the mineralization. The work was completed over one day by three Geologists, Will Randall (V.P. Exploration), Tyron Breytenbach (Exploration Geologist), Tim Dunnett (Exploration Geologist). Several old holes were located and recorded, the showing was located and it appears very structurally controlled, with the sulphides centred around a 1.5m wide fault, dipping vertically and striking east-west. Numerous samples were taken of the sulphide rich gabbro as well as of the surrounding host gabbro and country rock (Rhyolite) to compare the background and anomalous values. The host structure was followed east for about 50-60m before being lost in heavy overburden. Figure 2 (Detailed Claim Map) shows the location of the deposit and where the samples were taken.

Assay Results

Samples were sent to ALS Chemex in Timmins to be processed in Vancouver, the lab is industry certified and has proven exceptionally reliable. Check assays and blanks were also sent with the samples. The resulting certificates are enclosed. The samples were assayed for Ni, Cu, Au, Pt and Pd.

The table below shows the sample location and results.

Sample Number	Easting	Northing	Ni%	Cu%	Au ppm	Pt ppm	Pd ppm
E099665	453219	5275055	2.46	0.86	0.645	0.381	0.315
E099666	453080	5275045	0.26	0.32	0.086	0.081	0.055
E099667	453302	5275161	0.05	0.04	0.01	0.008	0.006
E099669	453223	5275054	0.48	0.19	0.029	0.014	0.04
E099671	453221	5275050	0.1	0.03	0.008	0.005	0.003
E099672	453220	5275047	1.51	0.64	0.193	0.136	0.228

Work Log

<u>Date</u>	<u>Description</u>	<u>Performed By</u>	<u>Amount</u>
4/07/2008	Mapping and sampling during site visit by geologist. Flew in 9am, flew out 4pm.	Will Randall (P.geo), Tyron Breytenbach (Bsc Geology),	\$800
6/07/2008	6 samples submitted to ALS for assay.	ALS LABS Cost of \$163.60 per sample for the 5 element test. Plus \$30 admin fee.	\$1011.6 Total: \$1811.6

Conclusions and Recommendations

After the visit it is clear that the host structure is continuous for at least some distance, the values are encouraging and match historical work. A drilling program is scheduled for winter 2009, and a drill access road is being permitted at present. It is of a high importance to see just how deep and how far the structure extends and whether the grades are maintained at depth.

Author Qualification

I, Tyron Breytenbach, of Timmins Ontario, hereby certify that I am a qualified and competent geologist. I hold a Bsc Geology Degree and am in the process of obtaining my P.geo designation.

I am gainfully employed by Liberty Mines as an exploration geologist, and hold no direct interest in any of the company's land packages.

This report is based on knowledge and observations gained from being present on the property.

5th September 2009

A handwritten signature in black ink, appearing to read 'Tyron Breytenbach', is written over a horizontal dashed line.

Tyron Breytenbach



ALS Chemex

EXCELLENCE IN ANALYTICAL CHEMISTRY

ALS Canada Ltd.

212 Brooksbank Avenue
North Vancouver BC V7J 2C1

Phone: 604 984 0221 Fax: 604 984 0218 www.alschemex.com

To: LIBERTY MINES INC.
SUITE 311A
8925 51ST AVENUE
EDMONTON AB T6E 5J3

Page: 1
Finalized Date: 21-JUL-2008
Account: LIBMNT

CERTIFICATE TM08091168

Project: GROVES

P.O. No.:

This report is for 28 Rock samples submitted to our lab in Timmins, ON, Canada on 7-JUL-2008.

The following have access to data associated with this certificate:

LIBERTY MINES

GARY NASH

WILL RANDALL

SAMPLE PREPARATION

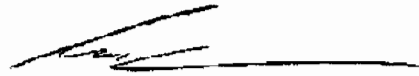
ALS CODE	DESCRIPTION
WEI-21	Received Sample Weight
LOG-22	Sample login - Rcd w/o BarCode
PUL-QC	Pulverizing QC Test
CRU-31	Fine crushing - 70% <2mm
SPL-21	Split sample - riffle splitter
PUL-31	Pulverize split to 85% <75 um

ANALYTICAL PROCEDURES

ALS CODE	DESCRIPTION	INSTRUMENT
PGM-ICP24	Pt, Pd, Au 50g FA ICP	ICP-AES
Ni-AA46	Ore grade Ni - aqua regia/AA	AAS
Cu-AA46	Ore grade Cu - aqua regia/AA	AAS

To: LIBERTY MINES INC.
ATTN: WILL RANDALL
REDSTONE MINE SITE
P.O. BOX 398
SOUTH PORCUPINE ON P0N 1H0

This is the Final Report and supersedes any preliminary report with this certificate number. Results apply to samples as submitted. All pages of this report have been checked and approved for release.

Signature: 
Colin Ramshaw, Vancouver Laboratory Manager



ALS Chemex

EXCELLENCE IN ANALYTICAL CHEMISTRY

ALS Canada Ltd.

212 Brooksbank Avenue

North Vancouver BC V7J 2C1

Phone: 604 984 0221 Fax: 604 984 0218 www.alschemex.com

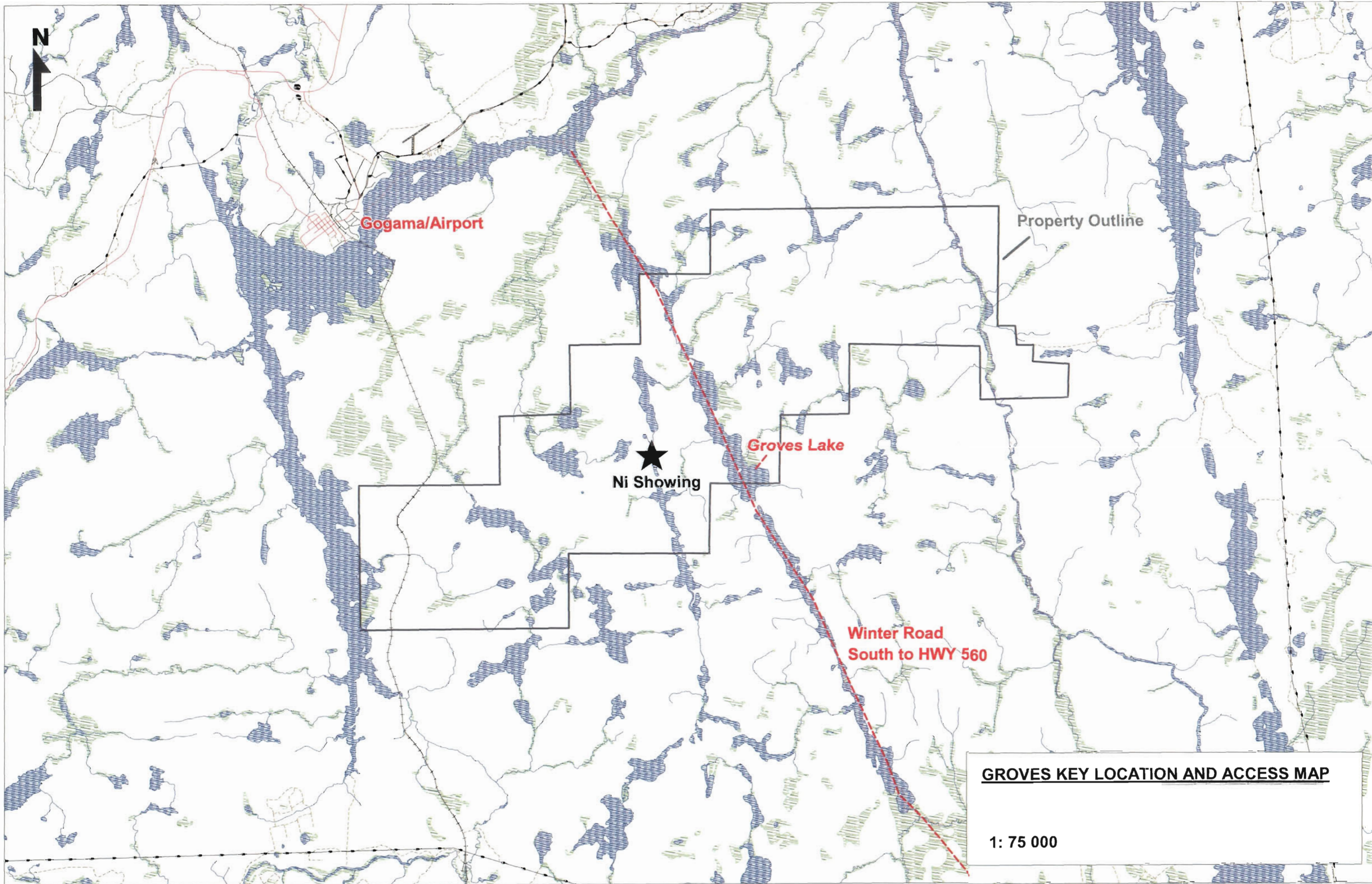
To: LIBERTY MINES INC.
 SUITE 311A
 8925 51ST AVENUE
 EDMONTON AB T6E 5J3

Page: 2 - A
 Total # Pages: 2 (A)
 Finalized Date: 21-JUL-2008
 Account: LIBMNT

Project: GROVES

CERTIFICATE OF ANALYSIS TM08091168

Sample Description	Method Analyte Units LOR	WEI-21	Ni-AA46	Cu-AA46	PGM-ICP24	PGM-ICP24	PGM-ICP24
		Recvd Wt. kg	Ni %	Cu %	Au ppm	Pt ppm	Pd ppm
		0.02	0.01	0.01	0.001	0.005	0.001
E099651		1.73	<0.01	<0.01	0.019	0.008	0.011
E099652		1.95	<0.01	<0.01	0.004	0.009	0.010
E099653		1.17	<0.01	<0.01	0.008	<0.005	<0.001
E099654		1.52	<0.01	0.01	0.002	<0.005	<0.001
E099655		1.37	<0.01	0.01	0.017	<0.005	<0.001
E099656		2.55	<0.01	0.01	0.005	<0.005	0.008
E099657		1.79	<0.01	0.01	0.003	0.009	0.009
E099658		1.28	<0.01	0.01	0.050	<0.005	<0.001
E099659		1.56	0.01	0.01	0.003	0.008	0.013
E099660		0.70	<0.01	0.01	0.008	0.010	0.007
E099661		0.66	0.01	0.01	0.005	<0.005	<0.001
E099662		0.88	<0.01	0.02	0.005	<0.005	0.001
E099663		2.58	<0.01	0.03	0.016	<0.005	0.005
E099664		2.65	<0.01	<0.01	0.007	<0.005	0.002
E099665		1.34	2.46	0.86	0.645	0.381	0.315
E099666		1.32	0.26	0.32	0.086	0.081	0.055
E099667		1.41	0.05	0.04	0.010	0.008	0.006
E099668		1.60	0.01	0.01	0.006	<0.005	0.001
E099669		1.22	0.48	0.19	0.029	0.014	0.040
E099670		2.02	0.36	2.44	0.300	0.025	0.072
E099671		1.29	0.10	0.03	0.008	<0.005	0.003
E099672		2.92	1.51	0.64	0.193	0.136	0.228
E099673		2.08	0.08	<0.01	0.005	<0.005	0.002
E099674		0.76	0.03	0.02	0.006	<0.005	0.004
E099675		0.91	0.07	<0.01	0.003	<0.005	0.006
E099676		1.36	0.06	<0.01	0.003	<0.005	0.003
E099677		1.53	1.26	1.24	0.337	0.065	0.082
E099678		0.92	0.01	0.02	0.004	<0.005	0.001



Gogama/Airport

Property Outline

Ni Showing

Groves Lake

**Winter Road
South to HWY 560**

GROVES KEY LOCATION AND ACCESS MAP
1: 75 000



Astronomical North

DETAILED SAMPLING/CLAIM MAP

Groves Lake

Historical showing

Traverse route

clm 4217813

clm 1228922

E099667

* E099665/E099669/E099671/E099672

E099666

clm 4217815

0

250 m

500 m

