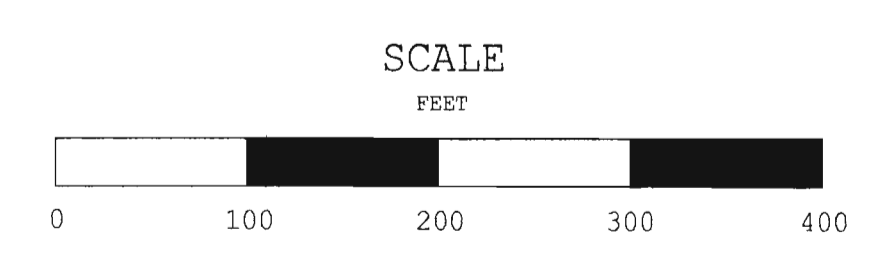
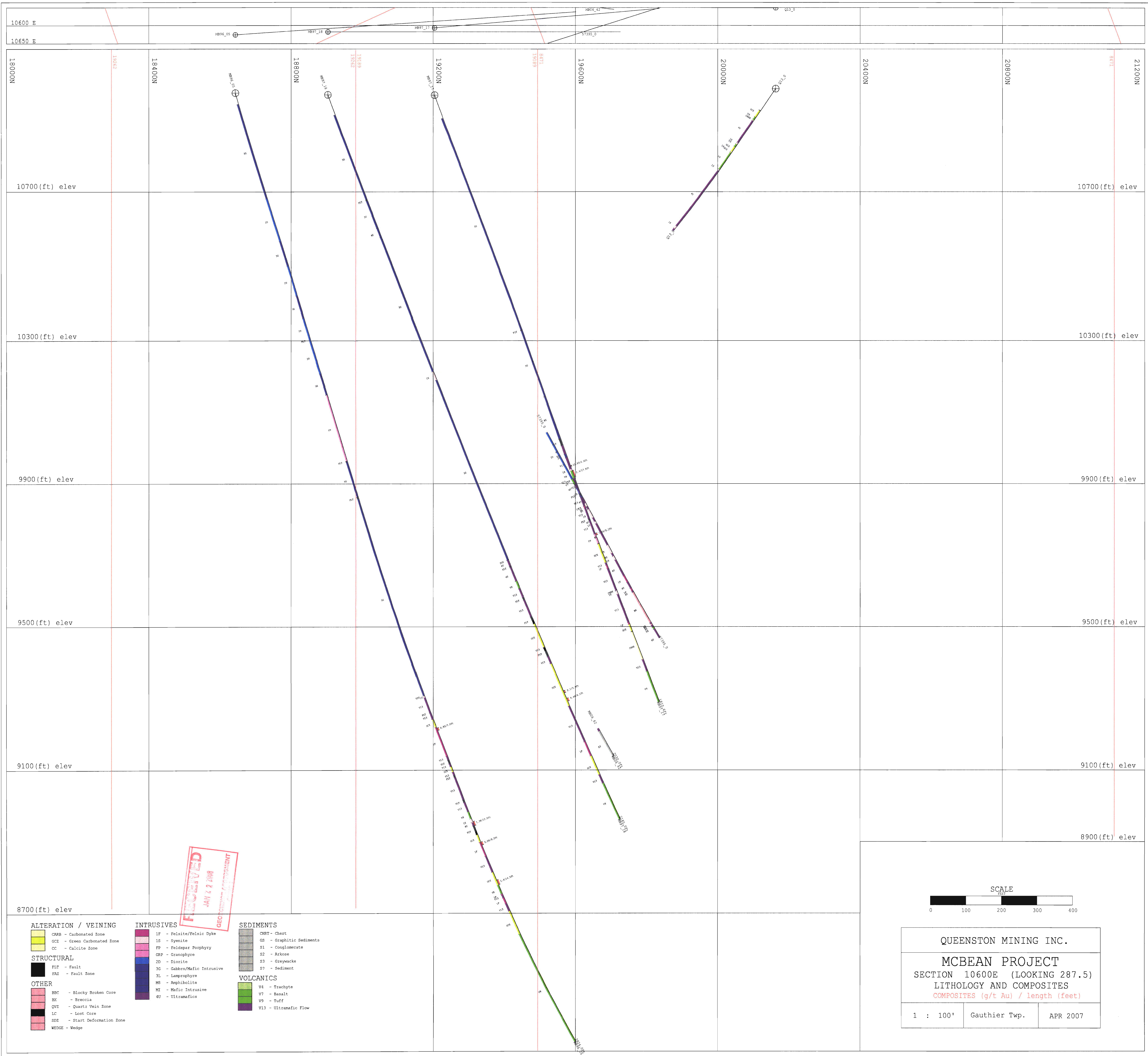


LEGEND

CLAIM LINES		ROAD	
CLAIM # eg. 25309		2006 DRILL HOLE	
PIT BOUNDARY		HISTORICAL DRILL HOLE	
WASTE PILE BOUNDARY			



QUEENSTON MINING INC.		
MCBEAN PROJECT CLAIM PLAN		
1 : 100'	Gauthier Twp.	APR 2007



ALTERATION / VEINING

- CARB - Carbonated Zone
 - CCZ - Green Carbonated Zone
 - CC - Calcite Zone
- STRUCTURAL**
- FLT - Fault
 - FAZ - Fault Zone
- OTHER**
- BBC - Blocky Broken Core
 - BK - Breccia
 - QVZ - Quartz Vein Zone
 - LC - Lost Core
 - SDZ - Start Deformation Zone
 - WEDGE - Wedge

INTRUSIVES

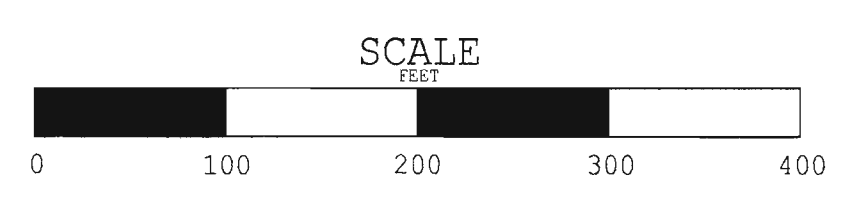
- IF - Felsite/Felsic Dyke
- IS - Syenite
- FP - Feldspar Porphyry
- GP - Granophyre
- DI - Diorite
- GM - Gabbro/Mafic Intrusive
- LS - Lamprophyre
- MS - Amphibolite
- MI - Mafic Intrusive
- UI - Ultramafics

SEDIMENTS

- CHRT - Chert
- GS - Graphitic Sediments
- S1 - Conglomerate
- S2 - Arkose
- S3 - Gypsacke
- S7 - Sediment

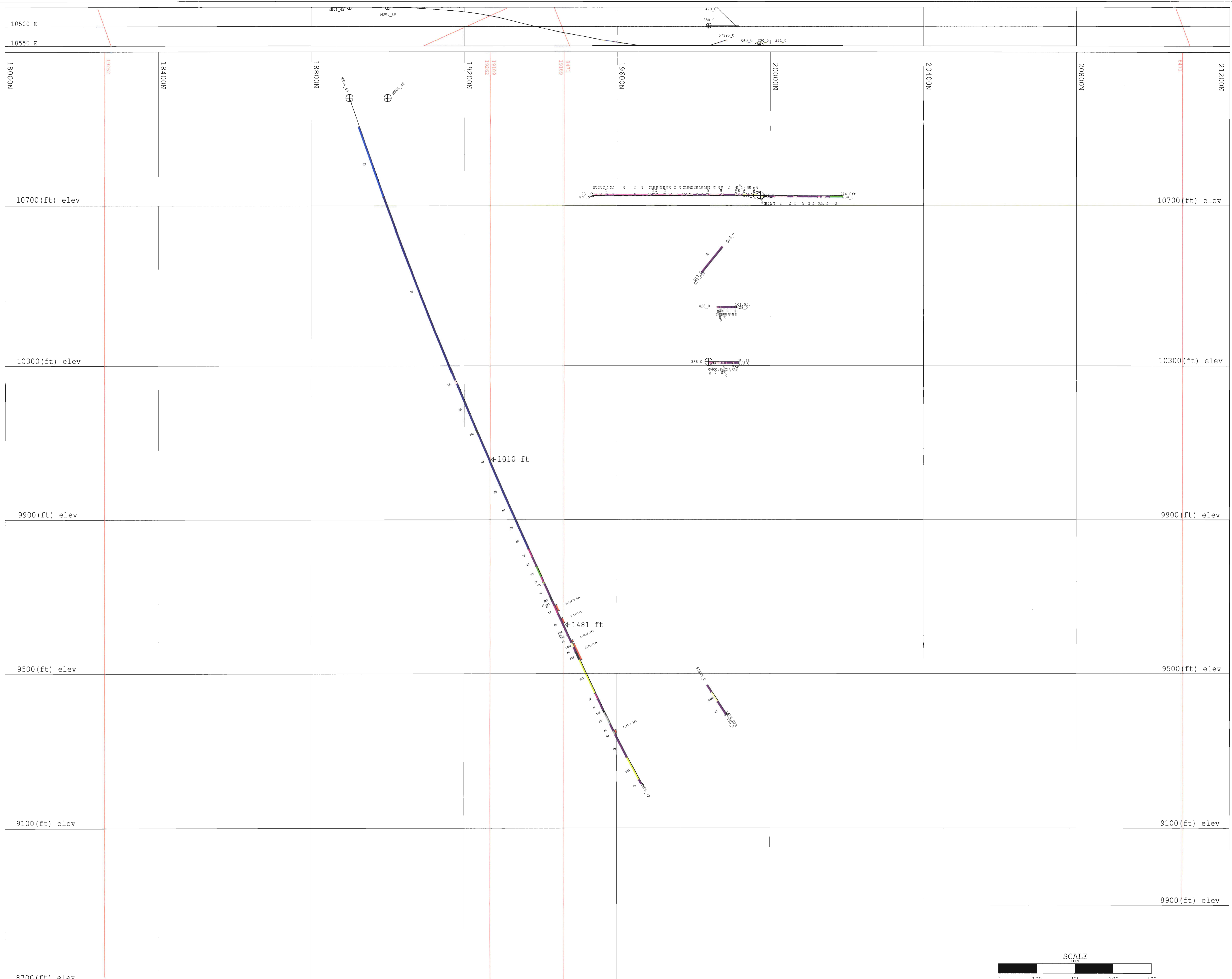
VOLCANICS

- V4 - Trachyte
- V7 - Basalt
- V9 - Tuff
- V13 - Ultramafic Flow



QUEENSTON MINING INC.
 MCBEAN PROJECT
 SECTION 10600E (LOOKING 287.5)
 LITHOLOGY AND COMPOSITES
 COMPOSITES (g/t Au) / length (feet)

1 : 100' Gauthier Twp. APR 2007



ALTERATION / VEINING		INTRUSIVES		SEDIMENTS	
	CBB - Carbonated Zone		1F - Felsite/Felsic Dyke		CHRT - Chert
	CCZ - Green Carbonated Zone		1S - Syenite		GS - Graphitic Sediments
	CC - Calcite Zone		FP - Feldspar Porphyry		S1 - Conglomerate
STRUCTURAL			GRP - Granophyre		S2 - Arkose
	FLT - Fault		2D - Diorite		S3 - Greysacke
	FAZ - Fault Zone		3G - Gabbro/Mafic Intrusive		S7 - Sediment
OTHER			3L - Lamprophyre	VOLCANICS	
	BBC - Blocky Broken Core		M8 - Amphibolite		V4 - Trachyte
	BK - Breccia		MI - Mafic Intrusive		V7 - Basalt
	QVZ - Quartz Vein Zone		4U - Ultramafics		V9 - Tuff
	LC - Lost Core				V13 - Ultramafic Flow
	SDZ - Start Deformation Zone				
	WEDGZ - Wedge				

SCALE
0 100 200 300 400

QUEENSTON MINING INC.

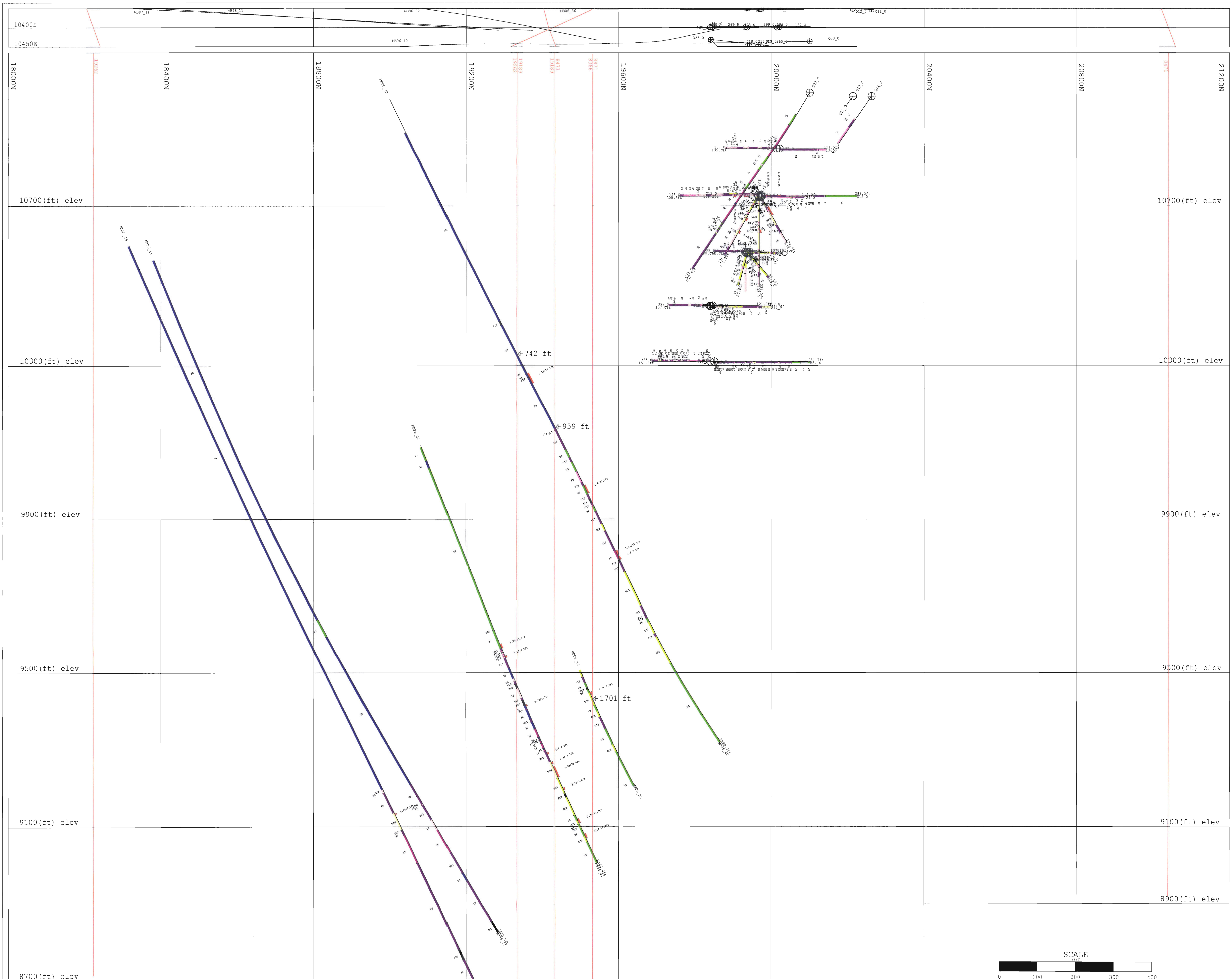
MCBEAN PROJECT

SECTION 10500E (LOOKING 287.5)

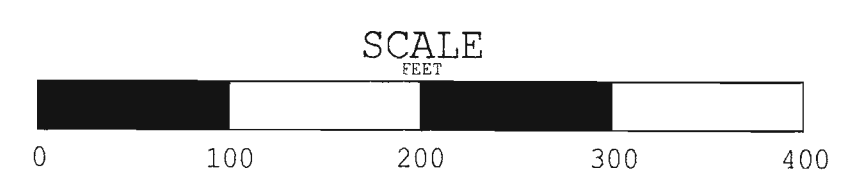
LITHOLOGY AND COMPOSITES

COMPOSITES (g/t Au) / length (feet)

1 : 100'	Gauthier Twp.	APR 2007
----------	---------------	----------

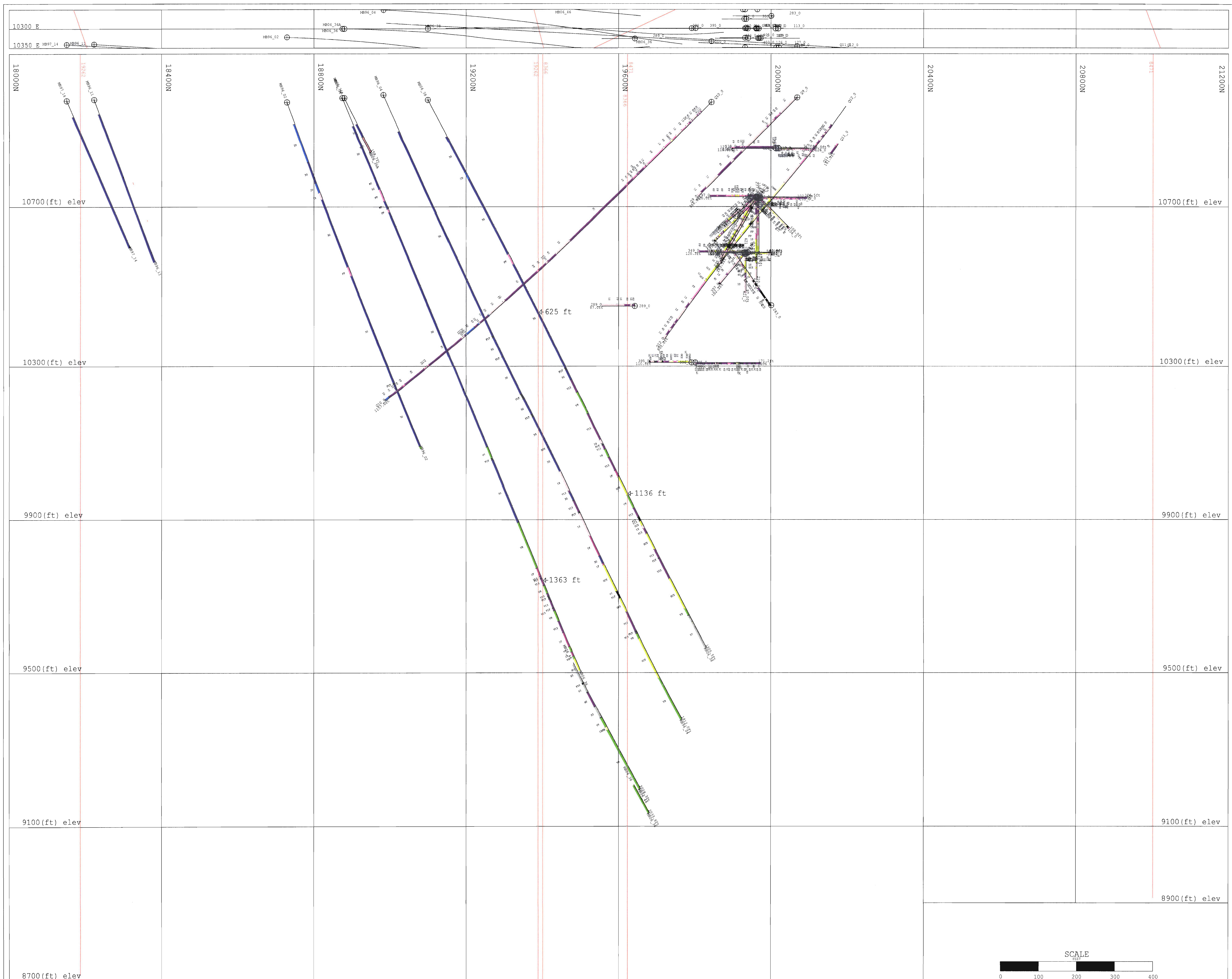


- | | | |
|---|---|--|
| ALTERATION / VEINING | INTRUSIVES | SEDIMENTS |
| <ul style="list-style-type: none"> CCBZ - Carbonated Zone GCZ - Green Carbonated Zone CC - Calcite Zone | <ul style="list-style-type: none"> 1F - Felsite/Felsic Dyke 1S - Syenite FP - Feldspar Porphyry GRP - Granophyre 2D - Diorite 3C - Gabbro/Mafic Intrusive 3L - Lamprophyre M8 - Amphibolite MT - Mafic Intrusive 4U - Ultramafics | <ul style="list-style-type: none"> CHT - Chert GS - Graphitic Sediments S1 - Conglomerate S2 - Arkose S3 - Greywacke S7 - Sediment |
| STRUCTURAL | | VOLCANICS |
| <ul style="list-style-type: none"> FLT - Fault FAZ - Fault Zone | | <ul style="list-style-type: none"> V4 - Trachyte V7 - Basalt V9 - Tuff V13 - Ultramafic Flow |
| OTHER | | |
| <ul style="list-style-type: none"> BRC - Blocky Broken Core BX - Breccia QVZ - Quartz Vein Zone LC - Lost Core SDZ - Start Deformation Zone WEDGE - Wedge | | |



QUEENSTON MINING INC.
 MCBEAN PROJECT
 SECTION 10400E (LOOKING 287.5)
 LITHOLOGY AND COMPOSITES
 COMPOSITES (g/t Au) / length (feet)

1 : 100'	Gauthier Twp.	APR 2007
----------	---------------	----------



ALTERATION / VEINING

- CCBZ - Carbonated Zone
- GCZ - Green Carbonated Zone
- CC - Calcite Zone

STRUCTURAL

- FLT - Fault
- FAZ - Fault Zone

OTHER

- BBC - Blocky Broken Core
- BK - Breccia
- QVZ - Quartz Vein Zone
- LC - Lost Core
- SDZ - Start Deformation Zone
- WEDGE - Wedge

INTRUSIVES

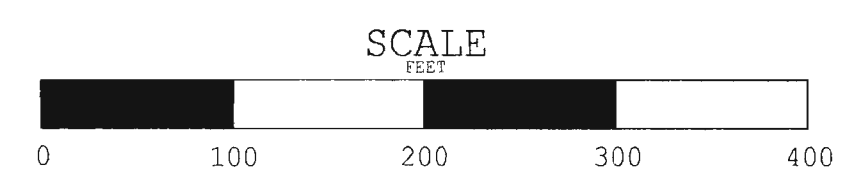
- IF - Felsite/Felsic Dyke
- IS - Syenite
- FP - Feldspar Porphyry
- GRP - Granophyre
- 2D - Diorite
- 3G - Gabbro/Mafic Intrusive
- 3L - Lamprophyre
- MB - Amphibolite
- MI - Mafic Intrusive
- 4U - Ultramafics

SEDIMENTS

- CHRT - Chert
- GS - Graphitic Sediments
- S1 - Conglomerate
- S2 - Arkose
- S3 - Greywacke
- S7 - Sediment

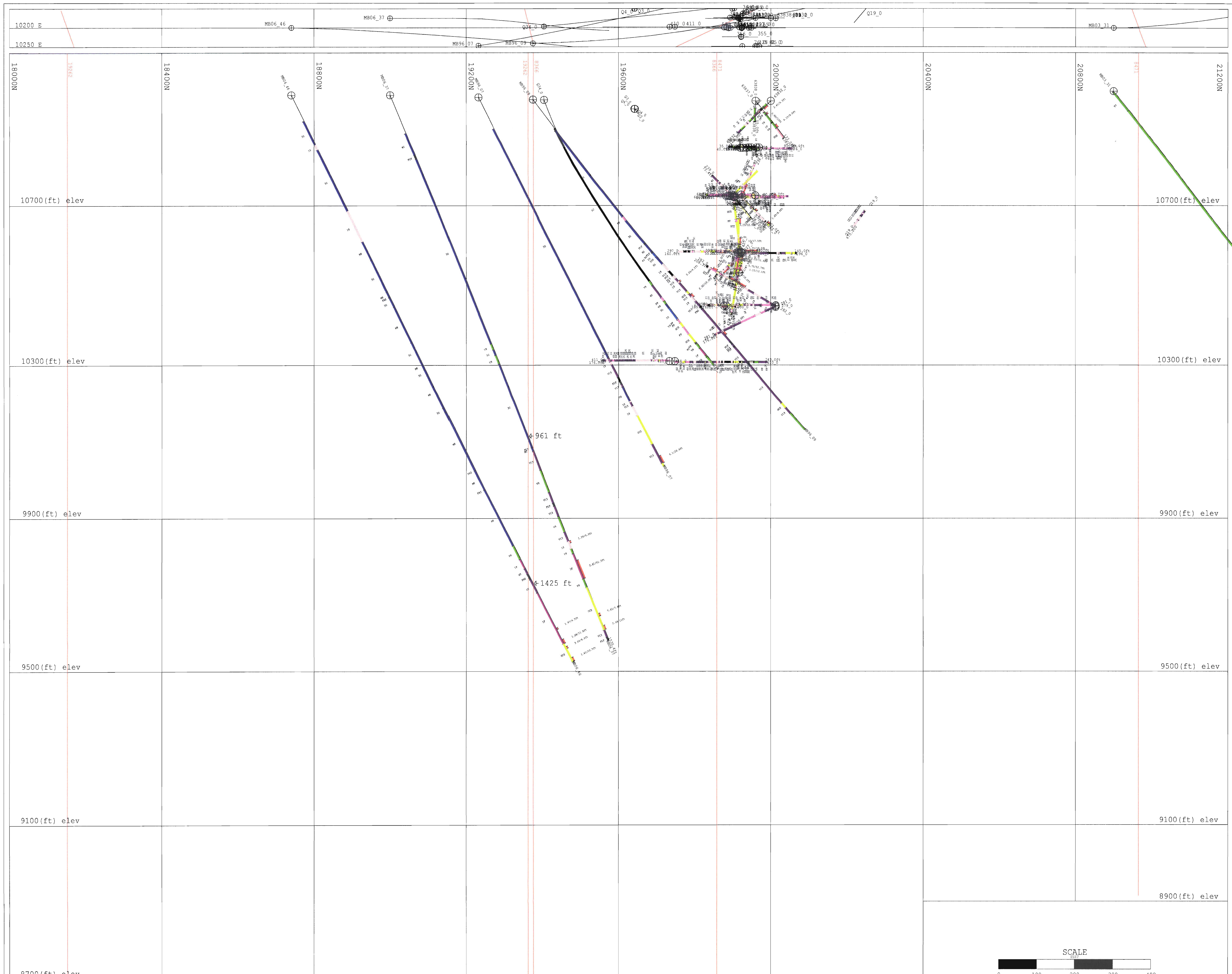
VOLCANICS

- V4 - Trachyte
- V7 - Basalt
- V9 - Tuff
- V13 - Ultramafic Flow



QUEENSTON MINING INC.
MCBEAN PROJECT
 SECTION 10300E (LOOKING 287.5)
 LITHOLOGY AND COMPOSITES
 COMPOSITES (g/t Au) / length (feet)

1 : 100'	Gauthier Twp.	APR 2007
----------	---------------	----------



ALTERATION / VEINING		INTRUSIVES		SEDIMENTS	
OCB - Carbonated Zone	IF - Felsite/Felsic Dyke	CHRT - Chert	1F - Felsite/Felsic Dyke	GS - Graphitic Sediments	1S - Syenite
OCZ - Green Carbonated Zone	FP - Feldspar Porphyry	S1 - Conglomerate	1S - Syenite	S1 - Conglomerate	FP - Feldspar Porphyry
CC - Calcite Zone	GR - Granophyre	S2 - Arkose	GR - Granophyre	S2 - Arkose	GR - Granophyre
	2D - Diorite	S3 - Greywacke	2D - Diorite	S3 - Greywacke	3G - Gabbro/Mafic Intrusive
	3G - Gabbro/Mafic Intrusive	S7 - Sediment	3G - Gabbro/Mafic Intrusive	S7 - Sediment	3L - Lamprophyre
	3L - Lamprophyre		3L - Lamprophyre		M8 - Amphibolite
	M8 - Amphibolite		M8 - Amphibolite		MI - Mafic Intrusive
	MI - Mafic Intrusive		MI - Mafic Intrusive		4U - Ultramafics
	4U - Ultramafics		4U - Ultramafics		

VOLCANICS	
V4 - Trachyte	V7 - Basalt
V9 - Tuff	V13 - Ultramafic Flow

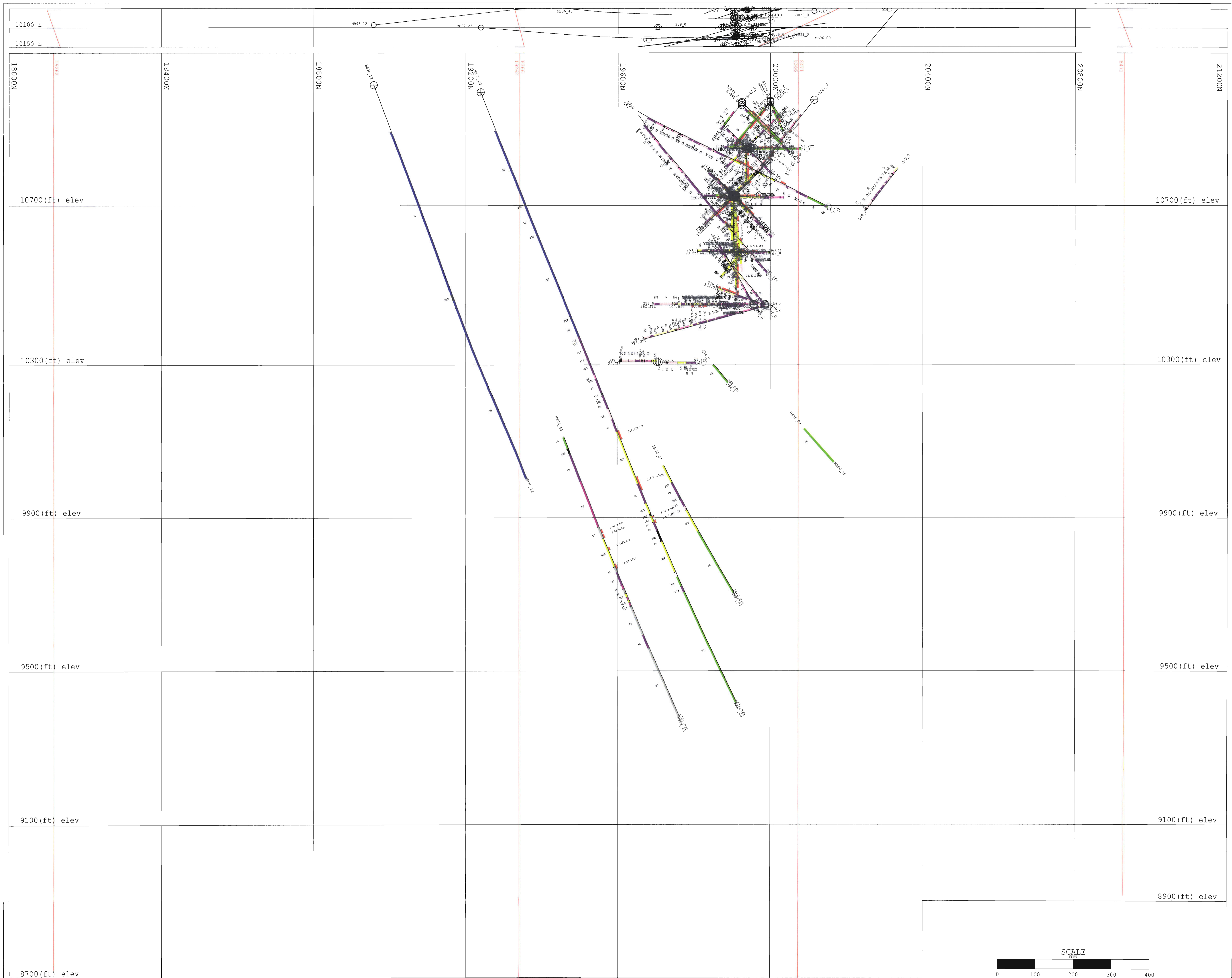
STRUCTURAL	
FLZ - Fault	FAZ - Fault Zone

OTHER	
BBC - Blocky Broken Core	BK - Breccia
QVZ - Quartz Vein Zone	LC - Lost Core
SDZ - Start Deformation Zone	WEDGE - Wedge

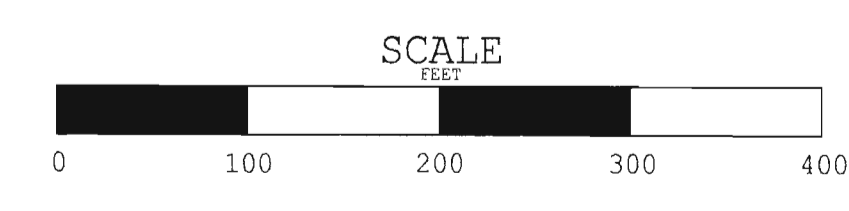


QUEENSTON MINING INC.
 MCBEAN PROJECT
 SECTION 10200E (LOOKING 287.5)
 LITHOLOGY AND COMPOSITES
 COMPOSITES (g/t Au) / length (feet)

1 : 100'	Gauthier Twp.	APR 2007
----------	---------------	----------

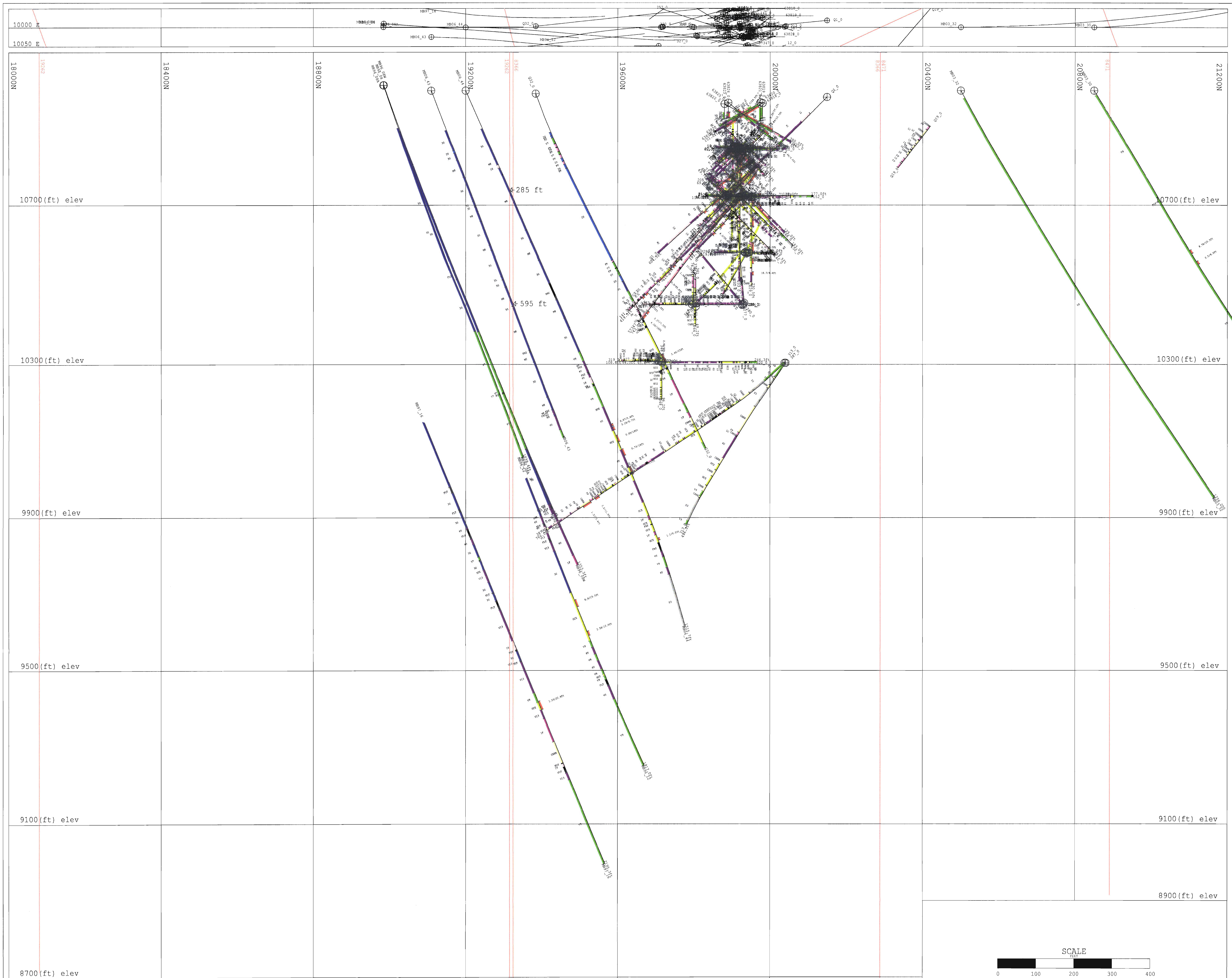


ALTERATION / VEINING	INTRUSIVES	SEDIMENTS
<ul style="list-style-type: none"> CARB - Carbonated Zone GCC - Green Carbonated Zone CC - Calcite Zone 	<ul style="list-style-type: none"> IF - Felsite/Felsic Dyke IS - Syenite FP - Feldspar Porphyry GRF - Granophyre DI - Diorite 3C - Cabbro/Mafic Intrusive 3L - Lamprophyte M6 - Amphibolite MI - Mafic Intrusive 4U - Ultramafics 	<ul style="list-style-type: none"> CHRT - Chert GS - Graphitic Sediments S1 - Conglomerate S2 - Arkose S3 - Claywacke S7 - Sediment
STRUCTURAL		VOLCANICS
<ul style="list-style-type: none"> FLZ - Fault FZ - Fault Zone 		<ul style="list-style-type: none"> V4 - Trachyte V7 - Basalt V9 - Tuff V13 - Ultramafic Flow
OTHER		
<ul style="list-style-type: none"> BBC - Blocky Broken Core BR - Breccia QVZ - Quartz Vein Zone LC - Lost Core SDZ - Start Deformation Zone WEDGE - Wedge 		

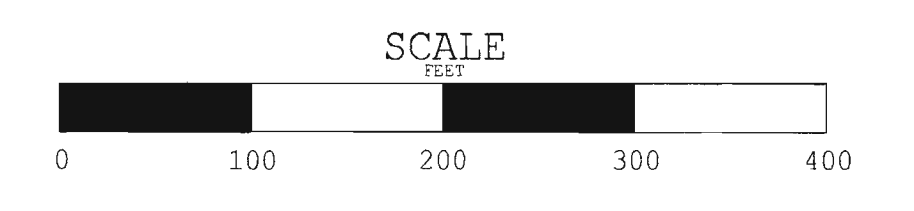


QUEENSTON MINING INC.
MCBEAN PROJECT
 SECTION 10100E (LOOKING 287.5)
 LITHOLOGY AND COMPOSITES
 COMPOSITES (g/t Au) / length (feet)

1 : 100' Gauthier Twp. APR 2007



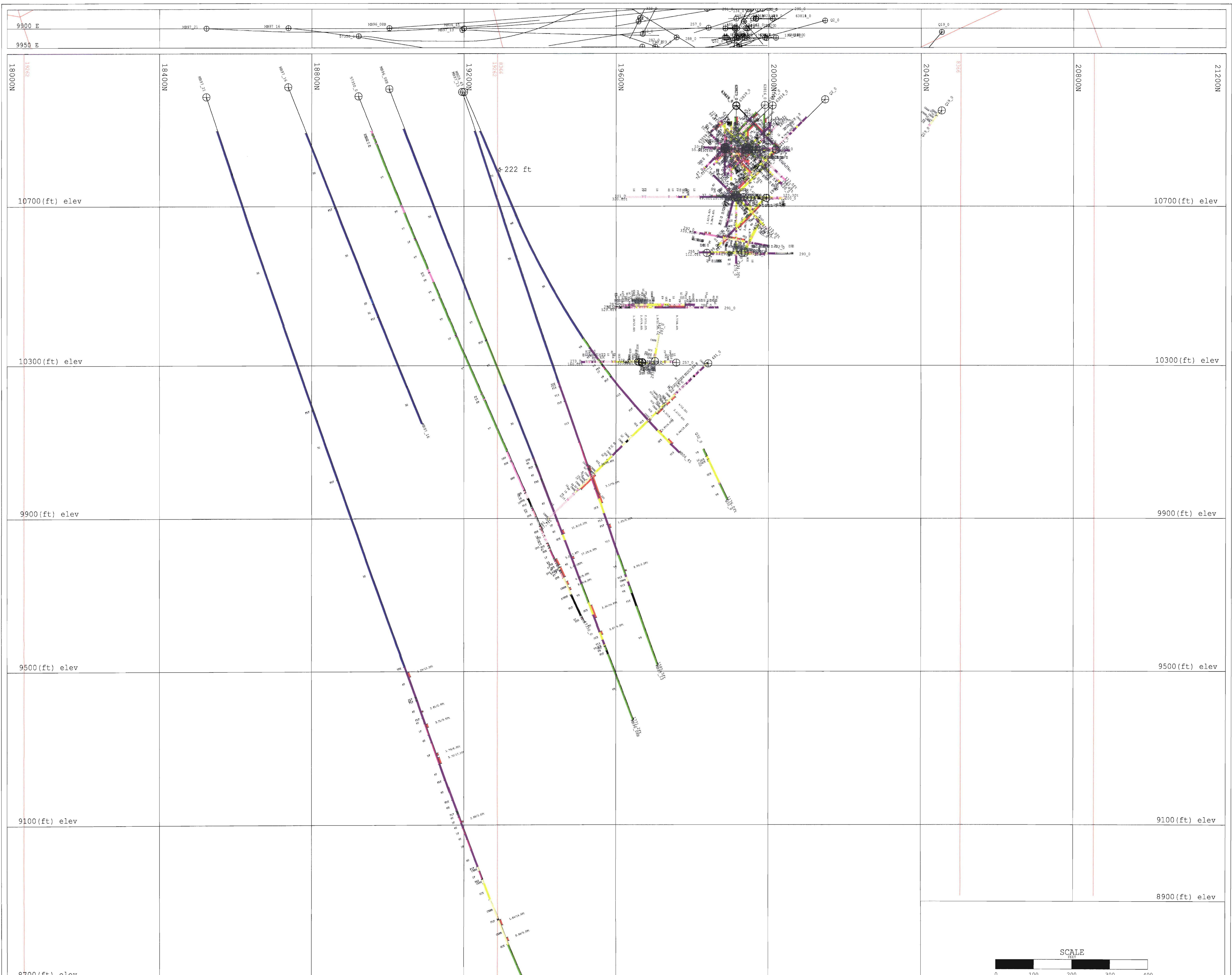
ALTERATION / VEINING	INTRUSIVES	SEDIMENTS
<ul style="list-style-type: none"> CARB - Carbonated Zone GCZ - Green Carbonated Zone CC - Calcite Zone 	<ul style="list-style-type: none"> 1F - Felsite/Felsic Dyke 1S - Syenite 1P - Feldspar Porphyry GRB - Granophyre 2D - Diorite 3C - Gabbro/Mafic Intrusive 3L - Lamprophyre M8 - Amphibolite MI - Mafic Intrusive 4U - Ultramafics 	<ul style="list-style-type: none"> CHRT - Chert GS - Gypsiferous Sediments S1 - Conglomerate S2 - Arkose S3 - Greywacke S7 - Sediment
STRUCTURAL		VOLCANICS
<ul style="list-style-type: none"> ELF - Fault FAZ - Fault Zone 		<ul style="list-style-type: none"> V4 - Trachyte V7 - Basalt V9 - Tuff VI3 - Ultramafic Flow
OTHER		
<ul style="list-style-type: none"> BBC - Blocky Broken Core BK - Breccia QVZ - Quartz Vein Zone LC - Lost Core SDZ - Start Deformation Zone WEDGE - Wedge 		



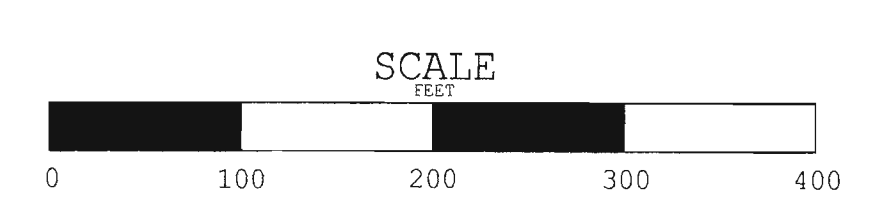
QUEENSTON MINING INC.

MCBEAN PROJECT
SECTION 10000E (LOOKING 287.5)
LITHOLOGY AND COMPOSITES
COMPOSITES (g/t Au) / length (feet)

1 : 100' Gauthier Twp. APR 2007



- | | | |
|---|---|--|
| ALTERATION / VEINING | INTRUSIVES | SEDIMENTS |
| <ul style="list-style-type: none"> CBZ - Carbonated Zone GCZ - Green Carbonated Zone CC - Calcite Zone | <ul style="list-style-type: none"> 1F - Felsite/Felsic Dyke 1S - Syenite FP - Feldspar Porphyry GRP - Granophyre 2D - Diorite 3G - Gabbro/Mafic Intrusive 3L - Lamprophyre M8 - Amphibolite MI - Mafic Intrusive 4U - Ultramafics | <ul style="list-style-type: none"> CHT - Chert GS - Graphitic Sediments S1 - Conglomerate S2 - Arkose S3 - Greywacke S7 - Sediment |
| STRUCTURAL | | VOLCANICS |
| <ul style="list-style-type: none"> FLT - Fault FAZ - Fault Zone | | <ul style="list-style-type: none"> V4 - Trachyte V7 - Basalt V9 - Tuff V13 - Ultramafic Flow |
| OTHER | | |
| <ul style="list-style-type: none"> BBC - Blocky Broken Core BX - Breccia QVZ - Quartz Vein Zone LC - Lost Core SDZ - Start Deformation Zone WEDGE - Wedge | | |



QUEENSTON MINING INC.

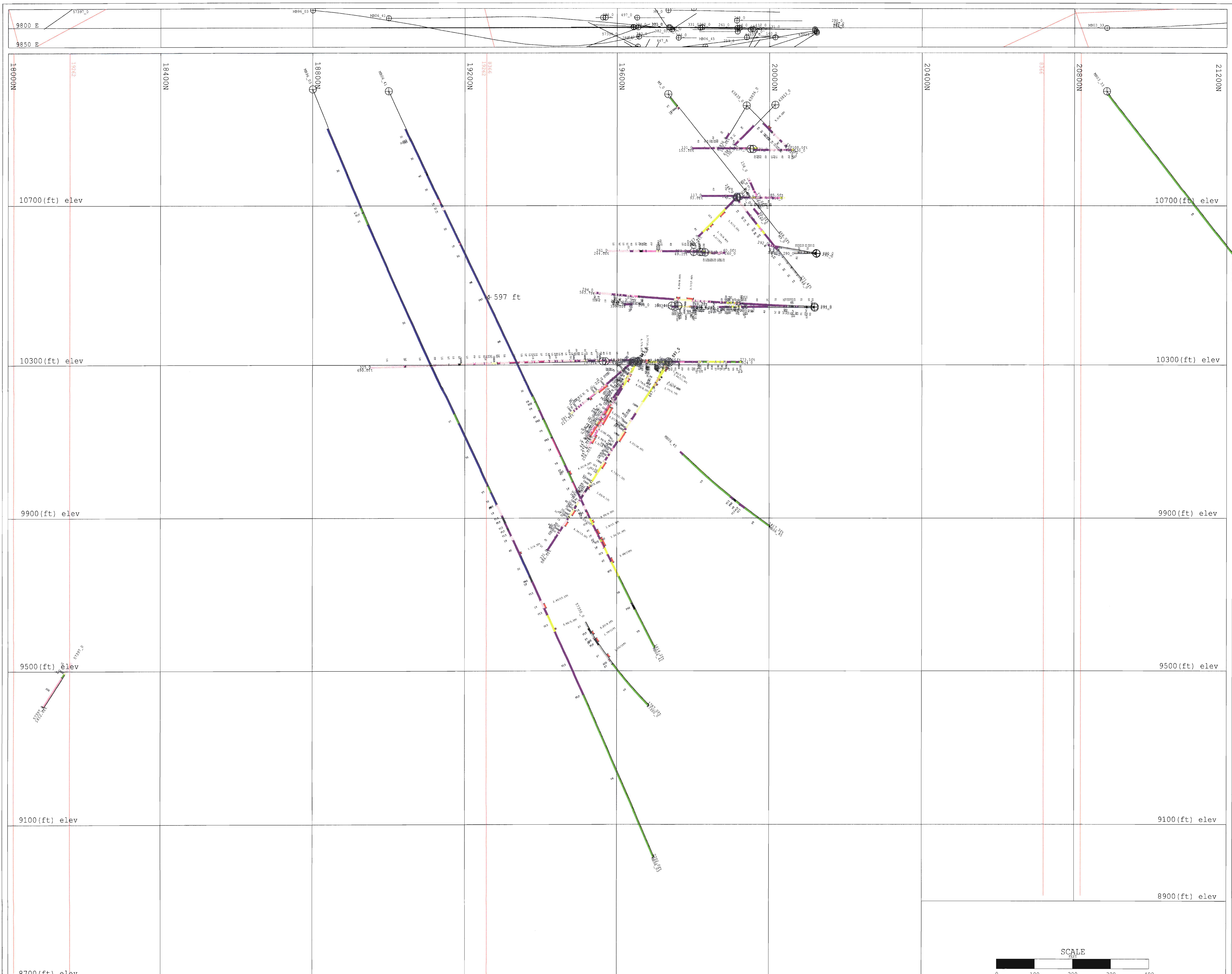
MCBEAN PROJECT

SECTION 9900E (LOOKING 287.5)

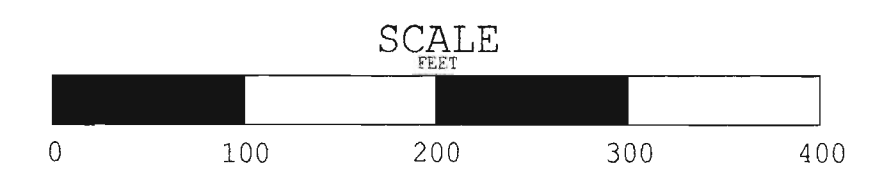
LITHOLOGY AND COMPOSITES

COMPOSITES (g/t Au) / length (feet)

1 : 100' Gauthier Twp. APR 2007

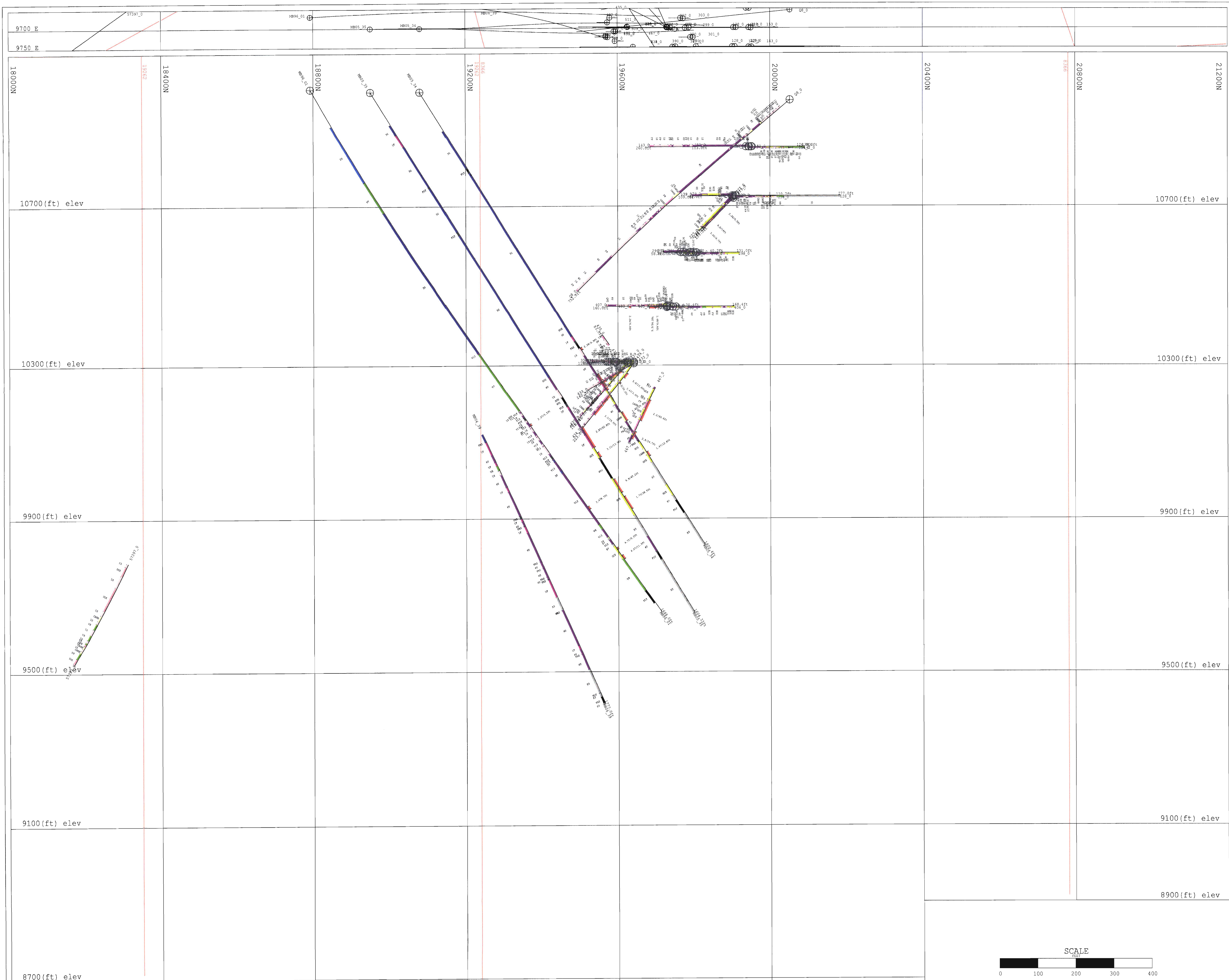


ALTERATION / VEINING	INTRUSIVES	SEDIMENTS
<ul style="list-style-type: none"> CABZ - Carbonated Zone GCZ - Green Carbonated Zone CC - Calcite Zone 	<ul style="list-style-type: none"> 1F - Felsite/Felsic Dyke 1S - Syenite FP - Feldspar Porphyry GP - Granophyre 2D - Diorite 3G - Gabbro/Mafic Intrusive 3L - Lamprophyre MB - Amphibolite MI - Mafic Intrusive 4U - Ultramafics 	<ul style="list-style-type: none"> CHRT - Chert GS - Graphitic Sediments S1 - Conglomerate S2 - Arkose S3 - Greywacke S7 - Sediment
STRUCTURAL <ul style="list-style-type: none"> FLT - Fault FAZ - Fault Zone 		VOLCANICS <ul style="list-style-type: none"> V4 - Trachyte V7 - Basalt V9 - Tuff V13 - Ultramafic Flow
OTHER <ul style="list-style-type: none"> BBC - Blocky Broken Core BX - Breccia QVZ - Quartz Vein Zone LC - Lost Core SDZ - Start Deformation Zone WEDGE - Wedge 		



QUEENSTON MINING INC.
MCBEAN PROJECT
 SECTION 9800E (LOOKING 287.5)
 LITHOLOGY AND COMPOSITES
 COMPOSITES (g/t Au) / length (feet)

1 : 100'	Gauthier Twp.	APR 2007
----------	---------------	----------



ALTERATION / VEINING

- CARB - Carbonated Zone
 - GCZ - Green Carbonated Zone
 - CC - Calcite Zone
- STRUCTURAL**
- FLT - Fault
 - FAZ - Fault Zone
- OTHER**
- BBC - Blocky Broken Core
 - BK - Breccia
 - QVZ - Quartz Vein Zone
 - LC - Lost Core
 - SDZ - Start Deformation Zone
 - WEDGE - Wedge

INTRUSIVES

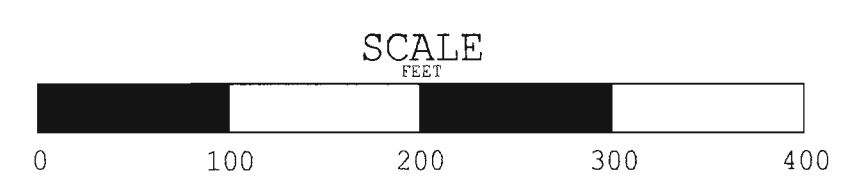
- 1F - Felsite/Felsic Dyke
- 1S - Syenite
- FP - Feldspar Porphyry
- GP - Granophyre
- 2D - Diorite
- 3G - Gabbro/Mafic Intrusive
- 3L - Lamprophyte
- MB - Amphibolite
- MI - Mafic Intrusive
- 4U - Ultramafics

SEDIMENTS

- CHRT - Chert
- GS - Graphitic Sediments
- S1 - Conglomerate
- S2 - Arkose
- S3 - Greywacke
- S7 - Sediment

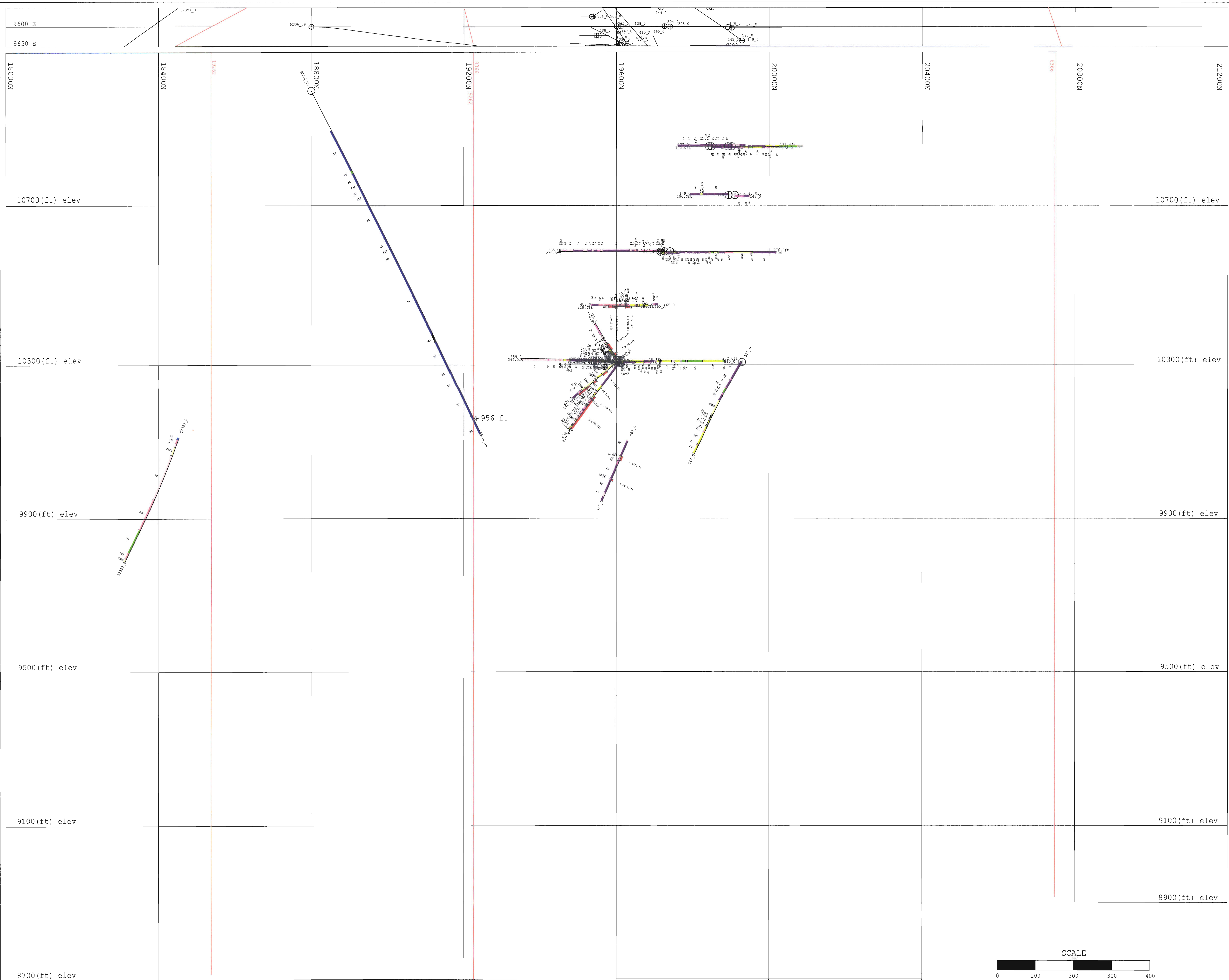
VOLCANICS

- V4 - Trachyte
- V7 - Basalt
- V9 - Tuff
- V13 - Ultramafic Flow



QUEENSTON MINING INC.
MCBEAN PROJECT
 SECTION 9700E (LOOKING 287.5)
 LITHOLOGY AND COMPOSITES
 COMPOSITES (g/t Au) / length (feet)

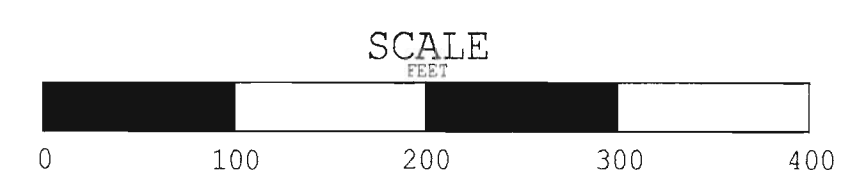
1 : 100'	Gauthier Twp.	APR 2007
----------	---------------	----------



- ALTERATION / VEINING**
- CARB - Carbonated Zone
 - GCZ - Green Carbonated Zone
 - CC - Calcite Zone
- STRUCTURAL**
- FLT - Fault
 - FAZ - Fault Zone
- OTHER**
- BBC - Blocky Broken Core
 - BK - Breccia
 - QVZ - Quartz Vein Zone
 - LC - Lost Core
 - SDZ - Start Deformation Zone
 - WEDGE - Wedge

- INTRUSIVES**
- IF - Felsite/Felsic Dyke
 - IS - Syenite
 - FP - Feldspar Porphyry
 - GR - Granophyre
 - 2D - Diorite
 - 3C - Gabbro/Mafic Intrusive
 - 3L - Lamprophyre
 - MB - Amphibolite
 - MI - Mafic Intrusive
 - 4U - Ultramafics

- SEDIMENTS**
- CSR - Chert
 - CS - Graphitic Sediments
 - S1 - Conglomerate
 - S2 - Arkose
 - S3 - Gypsacke
 - S7 - Sediment
- VOLCANICS**
- V4 - Trachyte
 - V7 - Basalt
 - V9 - Tuff
 - V13 - Ultramafic Flow



QUEENSTON MINING INC.

MCBEAN PROJECT
SECTION 9600E (LOOKING 287.5)
LITHOLOGY AND COMPOSITES
COMPOSITES (g/t Au) / length (feet)

1 : 100' Gauthier Twp. APR 2007