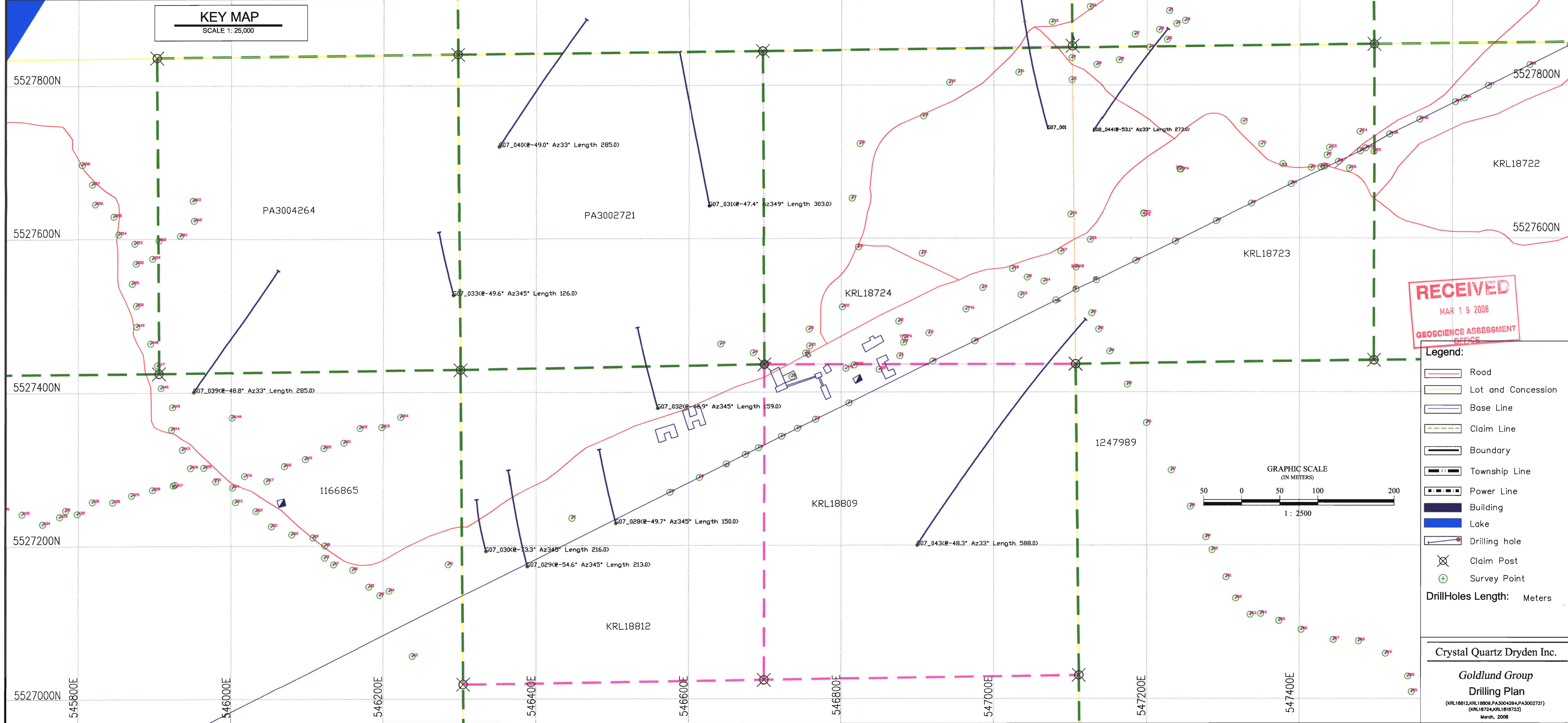
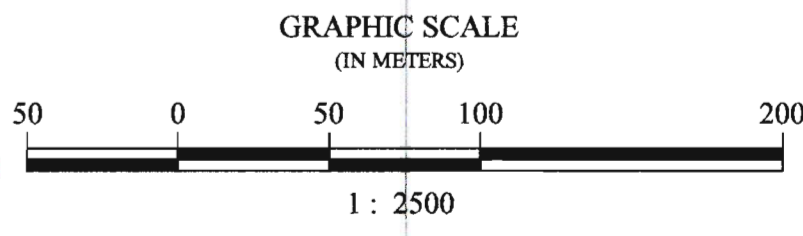


**KEY MAP**  
SCALE 1:25,000

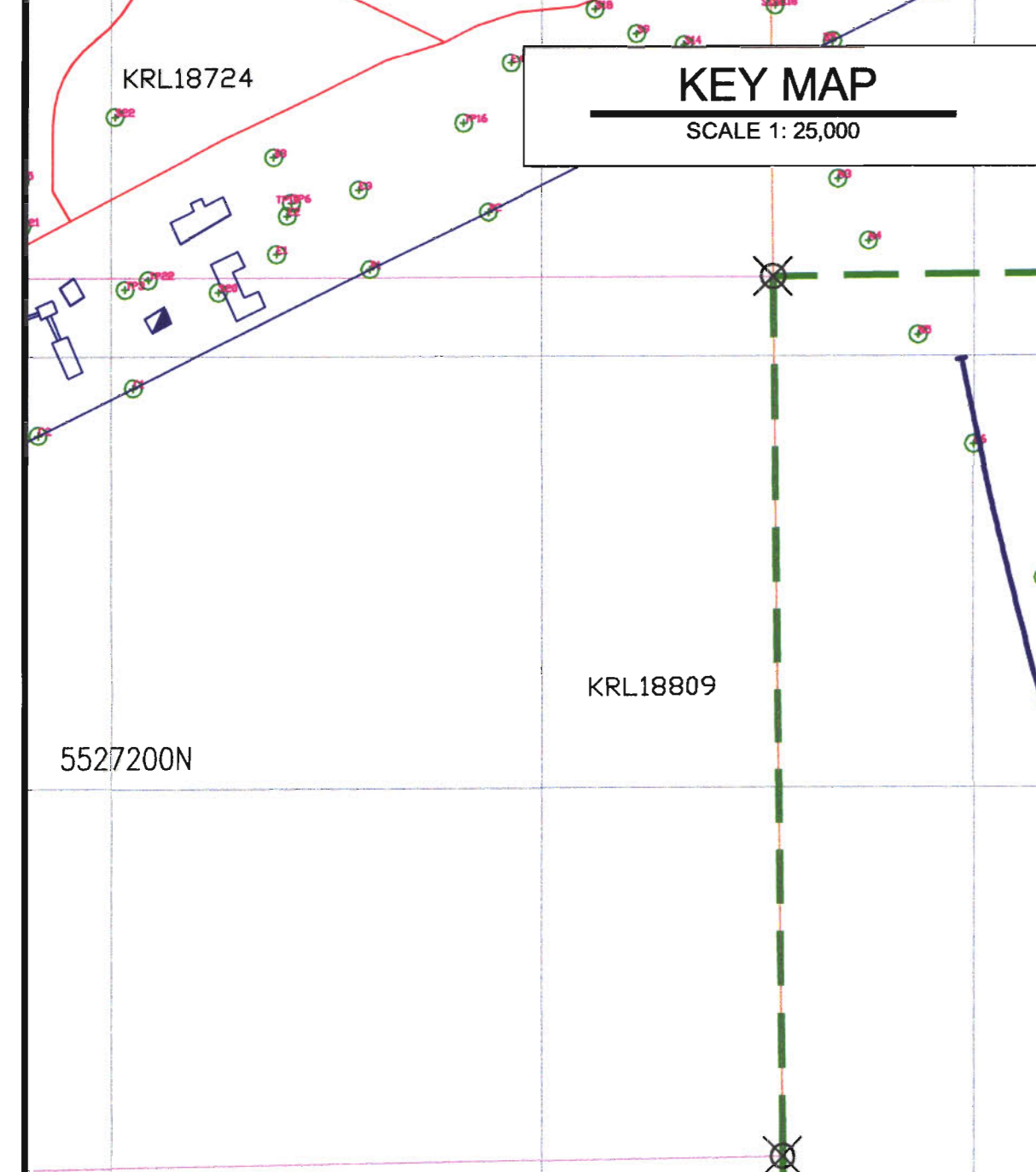
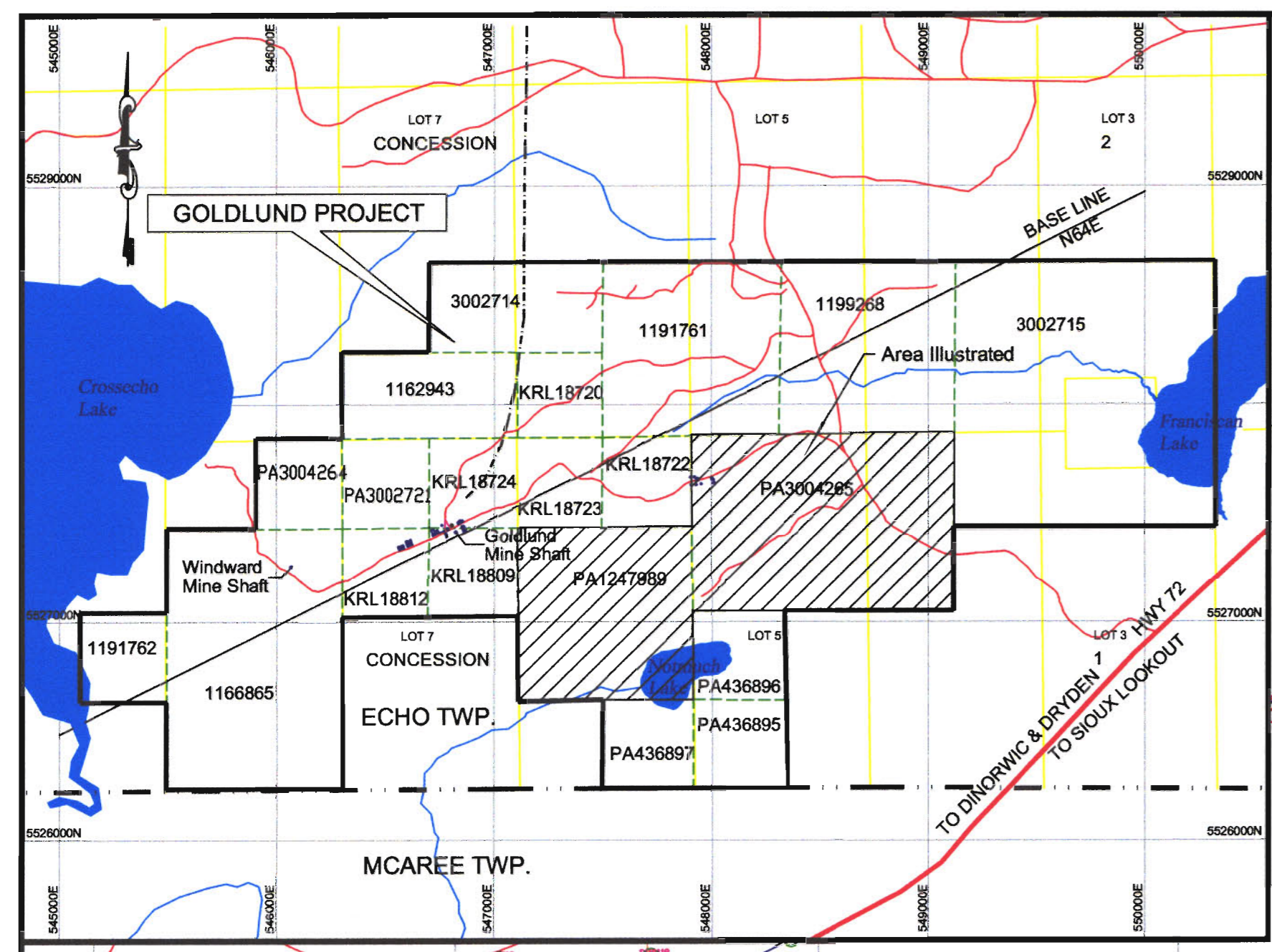
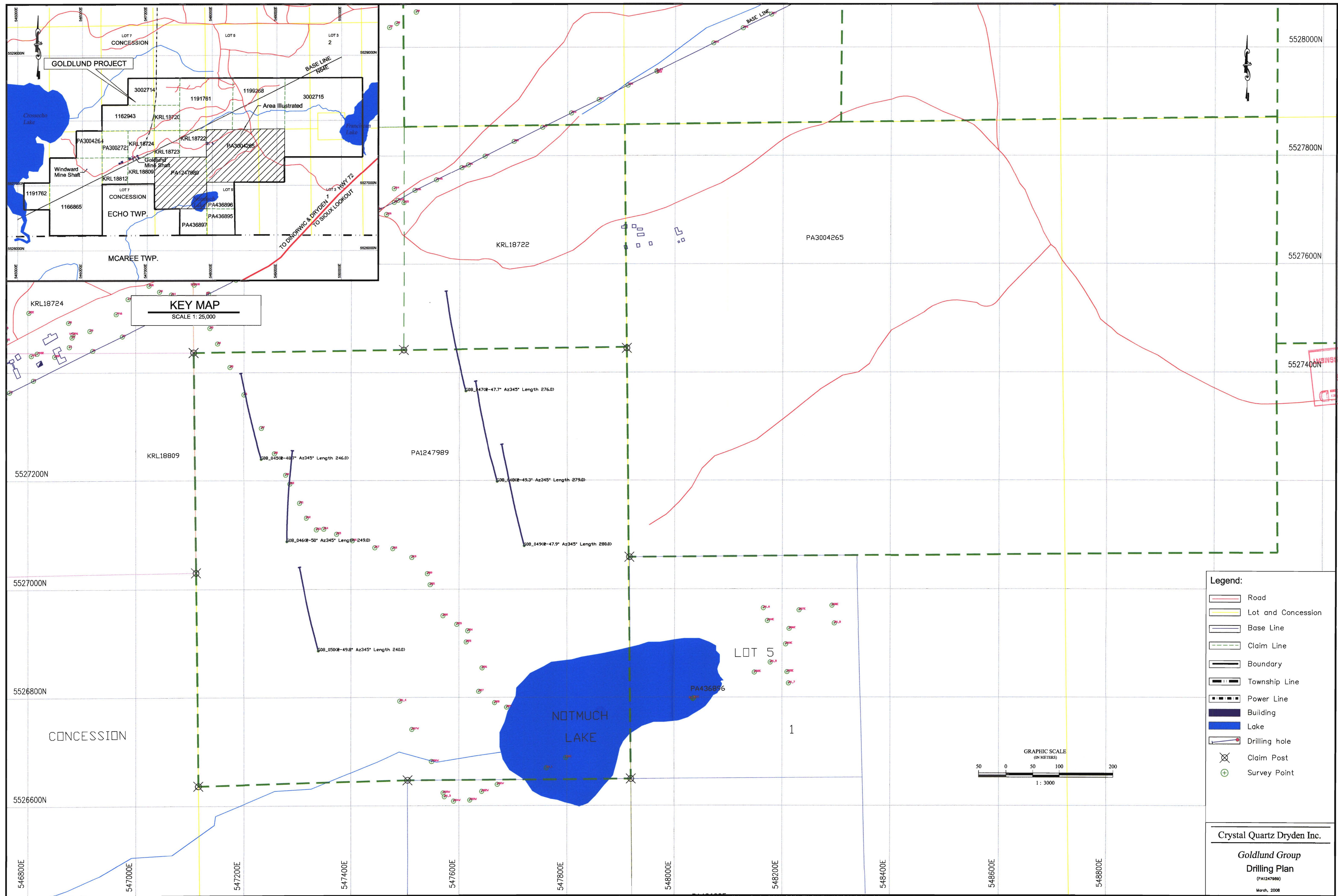


**RECEIVED**  
MAR 19 2008  
GEOSCIENCE ASSESSMENT OFFICE

- Legend:**
- Road
  - Lot and Concession
  - Base Line
  - Claim Line
  - Boundary
  - Township Line
  - Power Line
  - Building
  - Lake
  - Drilling hole
  - Claim Post
  - Survey Point
- DrillHoles Length: Meters

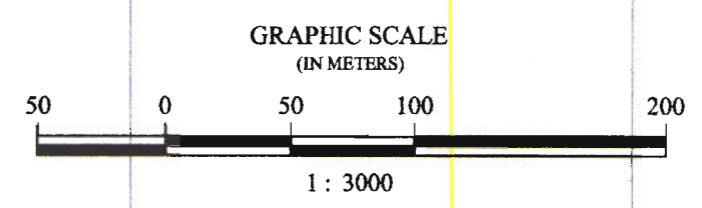


Crystal Quartz Dryden Inc.  
**Goldlund Group**  
**Drilling Plan**  
(KRL18812, KRL18809, PA3004264, PA3002721)  
(KRL18724, KRL18723)  
March, 2008



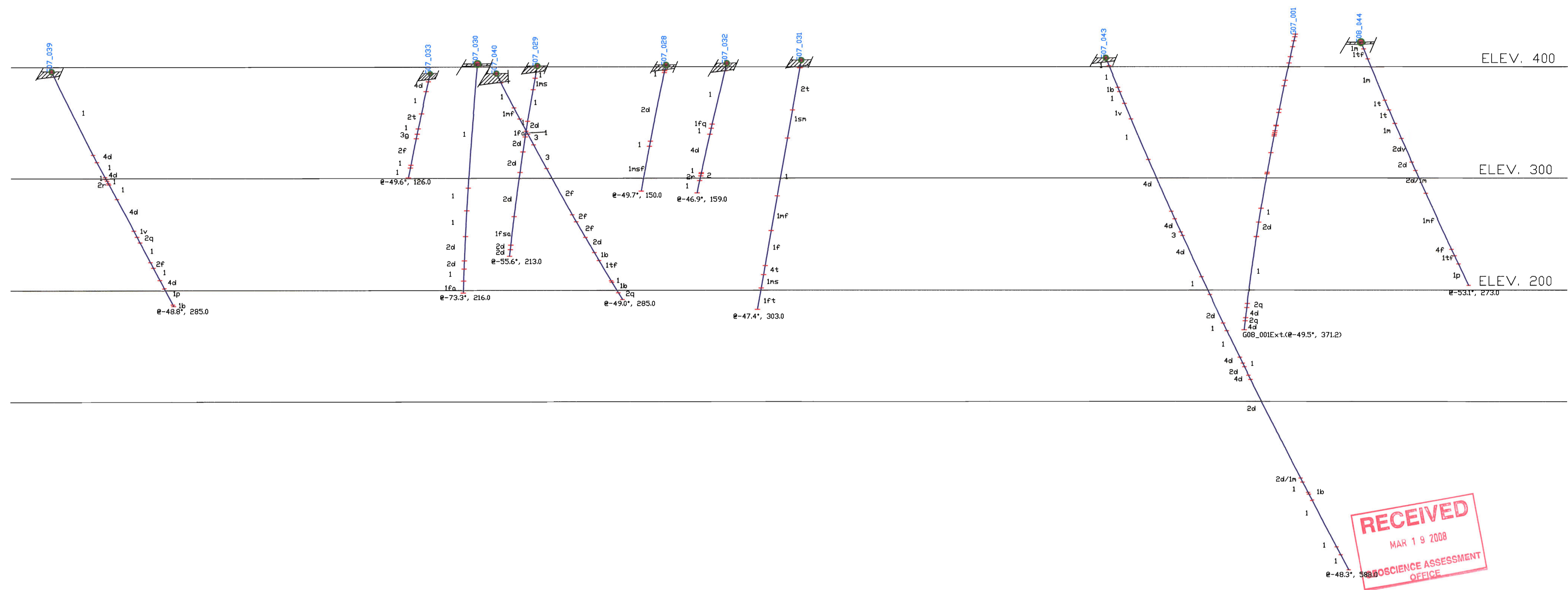
RECEIVED  
MARCH 19 2008  
GEOLOGICAL ASSESSMENT  
OFFICE

- Legend:**
- Road
  - Lot and Concession
  - Base Line
  - Claim Line
  - Boundary
  - Township Line
  - Power Line
  - Building
  - Lake
  - Drilling hole
  - Claim Post
  - Survey Point



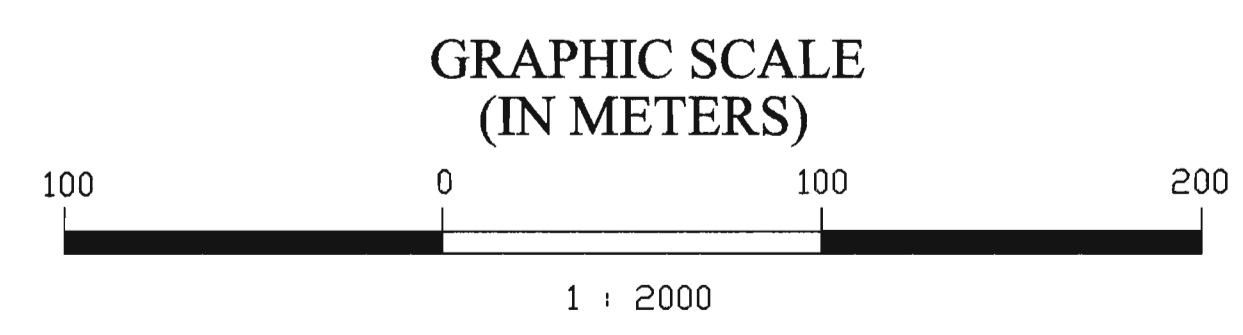
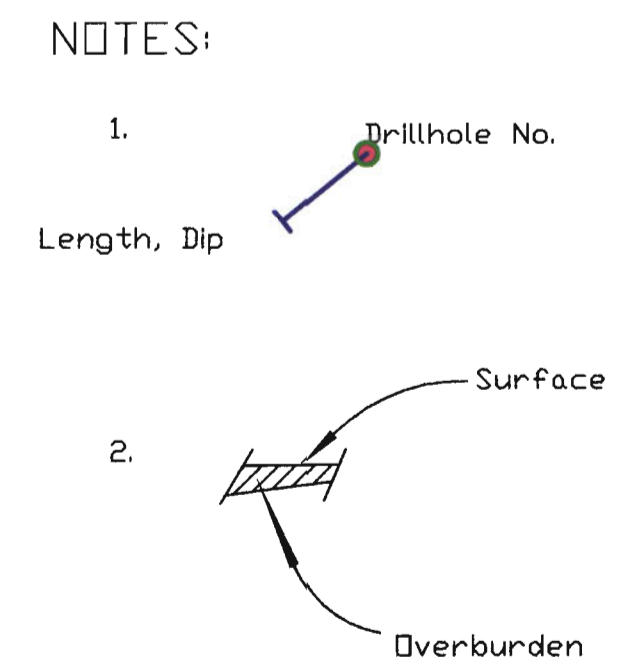
Crystal Quartz Dryden Inc.

**Goldlund Group**  
**Drilling Plan**  
(PA1247989)  
March, 2008

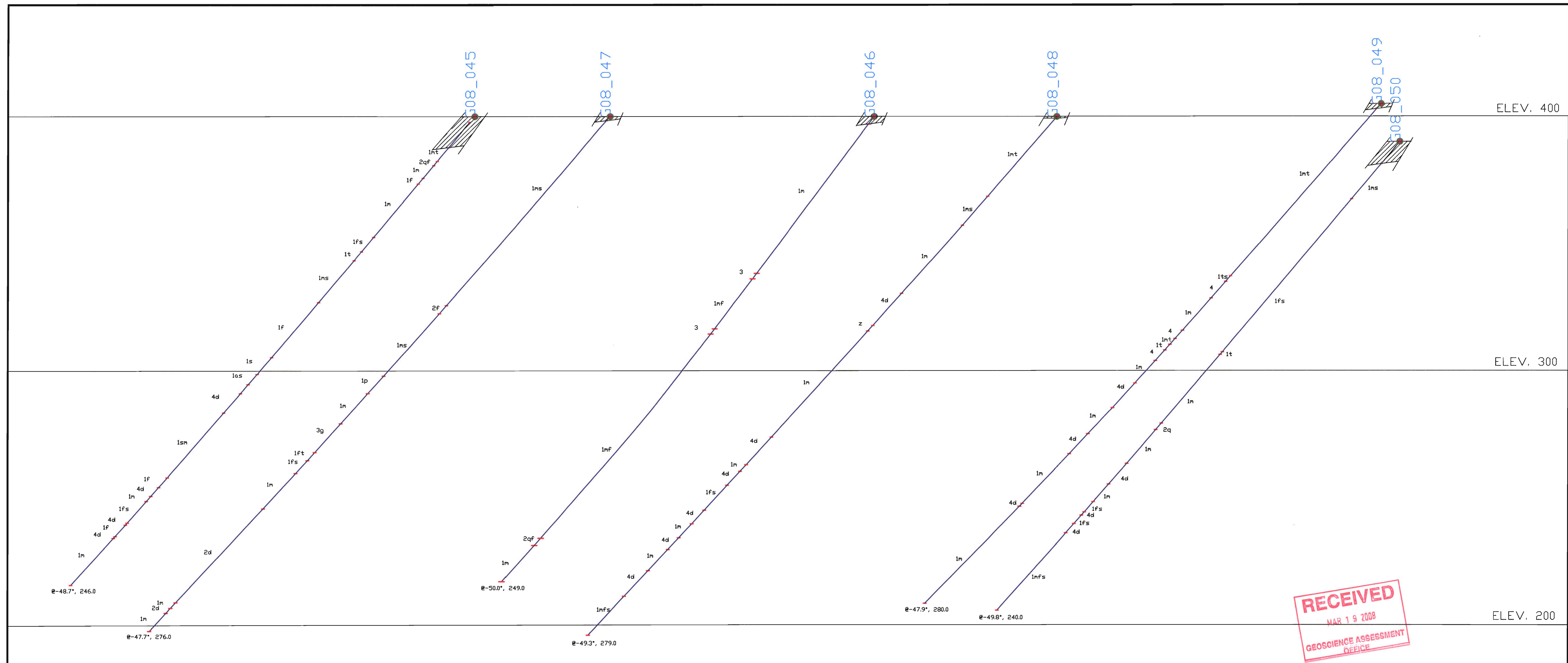


**RECEIVED**  
 MAR 19 2008  
 SCIENCE ASSESSMENT  
 OFFICE

| RCODE | UNITE  |
|-------|--|
| OVB   | Overburden                                   |
| Cas   | Casing                                       |
| LC    | Lost core                                    |
| GC    | Ground core                                  |
| 1     | Andesite                                     |
| 1b    | Andesitic tuff                               |
| 1g    | Amygdaloidal mv                              |
| 1f    | Foliated mv                                  |
| 1m    | Massive mv                                   |
| 1p    | Pillowd mv                                   |
| 1s    | Silicified mv                                |
| 1t    | Tuffaceous mv                                |
| 1v    | Volcanic mv                                  |
| 2     | Felsic Intrusive; undifferentiated           |
| 2d    | Granodiorite                                 |
| 2f    | Feldspar Porphyry                            |
| 2g    | Granite                                      |
| 2q    | Quartz Porphyry                              |
| 3     | Mafic Intrusive; undifferentiated            |
| 3d    | Diabase                                      |
| 3g    | Gabbro                                       |
| 4     | Intermediate Volcanics(iv); undifferentiated |
| 4d    | Dacite                                       |
| 4t    | Tuffaceous iv                                |
| 5     | Sediments; undifferentiated                  |
| 10    | Quartz Vein                                  |
| z     | Mineralization > 1%combined sulphides        |



Crystal Quartz Dryden Inc.  
 Goldlund Group  
 Drilling Section  
(KRL18812,KRL18809,PA3004284,PA3002721)  
 (KRL18724,KRL18723)  
 March, 2008



| RCODE | UNITE                                       |
|-------|---|
| OVB   | Overburden                                  |
| Cas   | Casing                                      |
| LC    | Last core                                   |
| GC    | Ground core                                 |
| 1     | Andesite                                    |
| 1g    | Amygdaloidal mv                             |
| 1f    | Foliated mv                                 |
| 1m    | Massive mv                                  |
| 1p    | Pillowed mv                                 |
| 1s    | Silicified mv                               |
| 1t    | Tuffaceous mv                               |
| 1v    | Variolitic mv                               |
| 2     | Felsic Intrusive; undifferentiated          |
| 2d    | Granodiorite                                |
| 2f    | Feldspar Porphyry                           |
| 2g    | Granite                                     |
| 2q    | Quartz Porphyry                             |
| 3     | Mafic Intrusive; undifferentiated           |
| 3d    | Diabase                                     |
| 3g    | Gabbro                                      |
| 4     | Intermediate Volcanics(v); undifferentiated |
| 4d    | Dacite                                      |
| 4t    | Tuffaceous iv                               |
| 5     | Sediments; undifferentiated                 |
| 10    | Quartz Vein                                 |
| z     | Mineralization > 1%combined sulphides       |

NOTES:

- Drillhole No.  
Length, Dip
- Surface  
Overburden

GRAPHIC SCALE  
(IN METERS)

