

Date 29/08/08

Drove from Hamilton to Sudbury 960 kms return and took Via Rail
from SUDBURY to STRALAK Twp #72. and stayed over night in motel \$70.00
Took food with us at \$100.00 Note: 960 kms = \$1,440.00

STRALAK Twp is in Sudbury Dist:

It is 17 miles West of CARTIER, from SUDBURY to Cartier in miles
is approx; 60m ? or Kms

We arrived on 28/08/08 at the Claim 1211398

Started work 29/08/08 at 8 am at #2 Post southeast corner close to the creek
on the bank with flagging tape and blaze to #3 Post, flat land with pine trees

to #4 Post along over Rail Track to #1 Post close to Creek and beaver dam
cross the Creek in water up a very difficult steep Mountain and big granite
boulders and pine trees, then descend to the top of mountain
to #2 Post finished at 6:00 p.m.

2.39300

André J. Leclair
Shelley A. Hill



North

Path Creek
Ponds

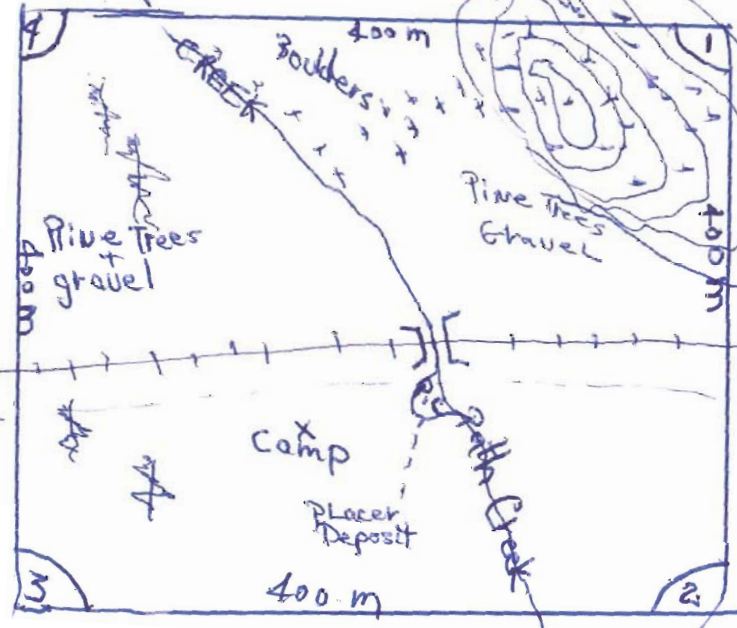


Highway 1A

RECEIVED
OCT 07 2008
GEOSCIENCE ASSESSMENT
OFFICE

WEST

East



Old Rd

Trap Line Camp

Power Line
C.P.R

Power Line
C.P. RAIL

← STALAK
Twp

→ PENNY
Twp

Spanish River

Spanish River

Provincial Park

South

STALAK-4106
Sudbury District

Sudbury