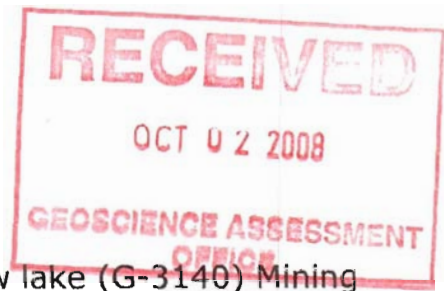


2 • 39336

Report Of Prospecting



In reference to claim number 3016741 Squaw lake (G-3140) Mining division Patricia.

Location : The showing are located in the Horn area of North East bay of Sturgeon Lake. The prospect is located on the South side of a small East trending bay near the tip of the Horn on Sturgeon Lake.

Access : There is no road access in the summer a boat can be launched from access points off of Highway 599. The site could be accessed by light aircraft. In the winter months the claims could be accessed by snowmobile.

Exploration/Development History : The first record of the claim area was ES Moore map of Sturgeon Lake gold published in 1911. It showed a claim BG130 located on the South side of an East trending bay at the southern tip. In 1969 the claim was restaked as PA38180 and in 1980 the claim was leased. In 1974 Leon W Green held this claim and surrounding claims he striped, trenched & had excavations of several pits. 1980 - 1982 Rickaby mines acquired the property they did bulk sampling. This claim adjoins my claim 3016741 on the West South boundary. The claim 3016741 that I have now was staked and worked by claim holder Edward Arthur Roberecki from 1982-2005. Edward Arthur Roberecki had prospected and sampled this claim. He also had a geophysical survey done on the claim. To highlight the survey the North East part of the claim exhibits a highly erratic magnetic pattern. The VLF survey showed a strong conductive zone in the North East part of the claim and a parallel weaker zone. The survey defined a zone extending North Eastward from the joining claim on the West boundary that has old pits and a shaft this hosted structure formed the high grade gold bearing zone. On May 17 2006 it was staked as claim 3016741 recorded Ed Holbik.

Geology : The area is composed of Granite with bands of greenstone and gabbro intrusions. In the immediate area number of high grade gold deposits occur. On the claims West a quarter mile 14oz/ton. One half mile South West rainbow island 11oz/ton. The geology along the Shear zone that run through the claim West and onto Rainbow Island have now been traced onto my claim 3016741 in two zones. The sheers are parallel to a Breccia of angular sized metavolcanics fragments in a carbonate matrix. To the North of the Breccia black or blue quartz veins carrying pyrite, chalcopyrite & possibly gold. The blue quartz veining is in contact with fine gray granodiorite feldspar granodiorite. The blue quartz veins were also traced in contact with mafic metavolcanics it appears the most sulphate mineralization

is in contact with the blue quartz and feldspar porphyry.

Work Done : Total time spent on the property to date was a total of 4 days. One day in May on 18 2006. The other three days were on May 10,11,12 2007. On May 18 2006 prospecting was done this was a general looking over and for mineralization and to get familiar with the area. In May 2007 it was decided to secure a Beep Mat Geophysical instrument that can see mineralization up to 3m deep detecting sulfides mineralizations associated with magnetite and conductive minerals. The Beep Mat would follow up from the most prospective areas on the claim from past work and recommendations made from a geophysical survey that located a major anomaly in the North East part of the claim. It appears reasonable to assume that this would be the continuation of the mineralized zone from the claim West PA38180. On May 10 2007 prospected and used the Beep Mat around the claims to follow up on mineralized sheers and conductive zones. On May 11 & 12 2007 Flagged and marked out conductive zones from the Beep Mat survey. The zones were marked and flagged striped of dirt and debris to ascertain a reasonable conclusion of the conductive zones. The geology has already been stated previously under geology. It appears that the most perspective host for the Gold would be in the blue quarts veins. The Sulfide mineralization appears almost entirely pyrite traces of chalcopyrite. The quarts veining appears at times and has some appearance of a cracked seal texture.

Conclusion : Detailed prospecting and geological mapping are warranted to follow up on the Beep Mat survey. Two zones that are a continuation from the high grade veining on the West claims. Stripping of the East West t veins that are flagged and marked should flowing up sampling and assaying. A total of 5 samples were obtained on the mineralized veins. They will be sent off for examination. The previous claim holder had prospected to try to find extensions of the mineralized zones from the West. With the aid of the Beep Mat instrument the zones have appeared to have been found. The assay results will confirm if the mineralization is a economic continuation from the West high grade gold properties.

Work done 2008

Total time spent on the property on 2008 was two days August 15 and August 16.

A decision was made based on exploration in 2007 to use a Beep Mat and a mark 111 wayjax fire pump to expose mineralization. August 15 prospected and used the beep mat around the claims to follow up on the mineralized shears were marked out and a fire pump was used to expose bedrock on showings cobb 2, 3, 4 and 5 the work was continued on, August 16 to expose the showings.

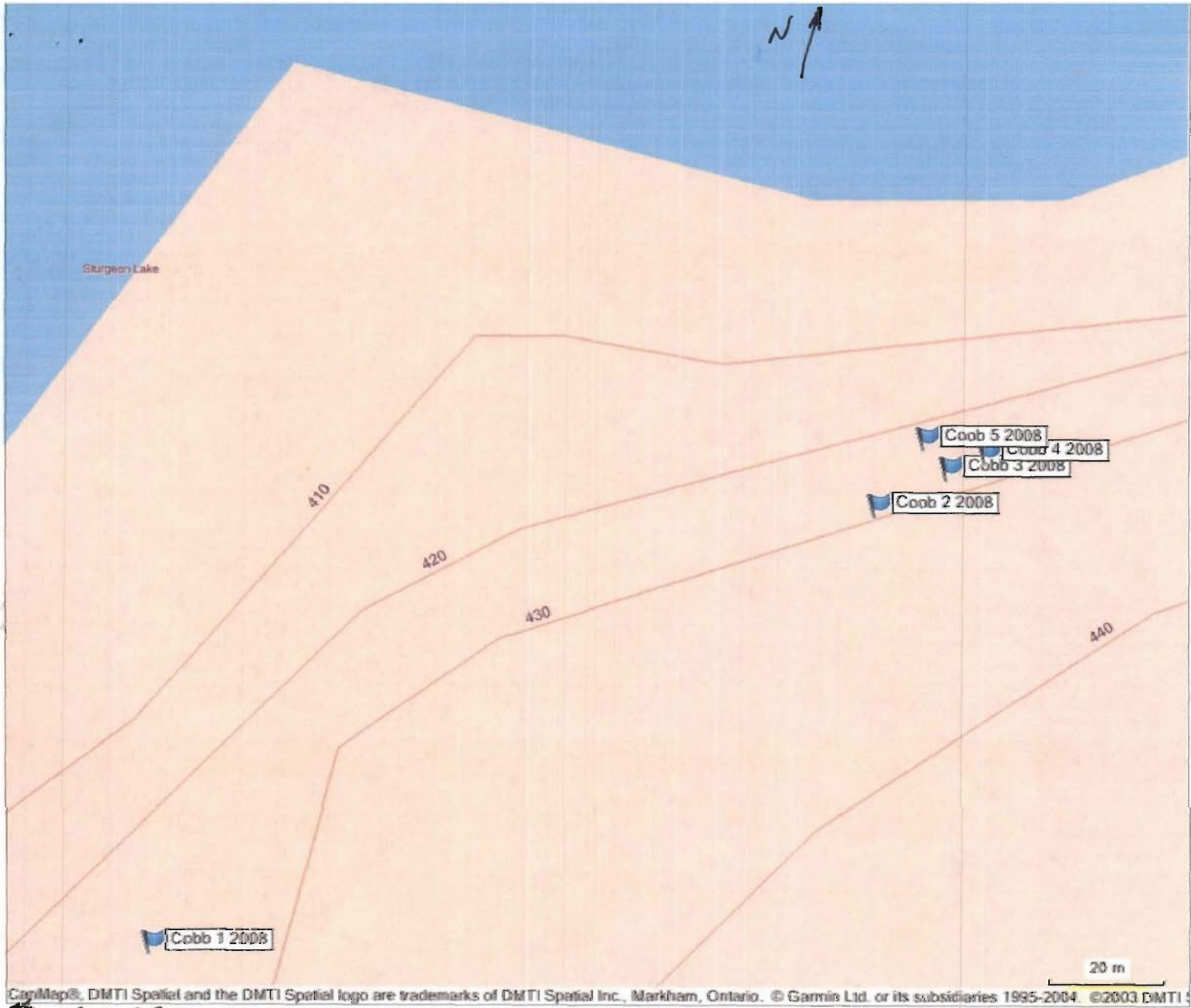
This venture was somewhat successful as the fire pump opened up a cross section across the mineralized veins that appeared to be 5 meters across the vein contact is clearly exposed on the south contact, the north contact was not exposed as the over burden trends north slopping down %20 covering the vein. The fire pump was used to try and remove the dirt but the fire pump was limited to it's removal. Also heavy root material crossed the exposure. This operation opened up a much larger area.

On August 16 a hammer and chisel was used and a total of 5 samples were taken to be analyzed cobb 1 to 5. The vein materials of sulfides were rusty with quartz, chert, iron pyrite and chalcopyrite some qaurts have blue and black veins I suspect these contain gold. This will be determined with the return of the assay results, the letter of result will be forwarded to be added to this report when I receive them. The results of assays from 2007 were forwarded in last year.

Detailed prospecting geological mapping and stripping with a machine is warranted. Along with washing off the exposures with the fire pump and more sampling.

The property may hold some economic value further work is recommended the evaluation from an M.N.D.M geologist would be a great asset. Perhaps in 2009 a plan of action will follow with a property examination.

Dated this, Monday, September 29 2008



GarminMap®, DMTI Spatial and the DMTI Spatial logo are trademarks of DMTI Spatial Inc., Markham, Ontario. © Garmin Ltd. or its subsidiaries 1995-2004. ©2003 DMTI

NAD 83

COBB 1	2008	150 663722	5545565
COBB 2	2008	150 663829	5545651
COBB 3	2008	150 663833	5545654
COBB 4	2008	150 663819	5545645
COBB 5	2008	150 663825	5545656

RECEIVED
 OCT 02 2008
 GEOSCIENCE ASSESSMENT
 OFFICE

Report of Expenses

Travel Thunder Bay to Cobb Bay Resort Sturgeon Lake vehicle expense
600km round trip 600km x \$0.40/km = \$240.00 August 15/16 2008

Food 2 days
\$40.00 per day x 2 days = \$80.00

August 15/16 2008

Boat \$25.00 per day x 2 day = \$50.00
Motor \$50.00 per day x 2 day = \$100.00
Trailer \$25.00 per day x 2 day= \$50.00
Launching fees \$20.00

August 15/16 2008

Fire Pump \$100.00 per day x 2 days = \$200.00
Fire hoses 5 lengths Misc \$50.00 per day x 2 days = \$100.00

Prospecting
2 days x \$120.00 per day = \$240.00

Beep Mat Survey Rental
\$200.00 per day x 2 days = \$400.00

Gasoline and oil \$35.00 dollars per 5 gallons with oil
5 gallons per day x 2 days = \$70.00 Outboard Motor.

Gasoline and oil \$35.00 dollars per 5 gallons with oil
5 gallons per day x 2 days= \$70.00 Fire Pump

Power Saw rental x 2 days x \$25.00 per day = \$50.00

Tent supplies misc. etc. \$100.00

Five samples to Actlabs \$14.00 x 5samples = \$70.00

Total = \$1600.00

Quality Analysis ...



Innovative Technologies

Invoice No.: **A08-5945**
 Purchase Order:
 Invoice Date: **09-Oct-08**
 Date submitted: **08-Sep-08**
 Your Reference:
 GST #: **R121979355**

Ed Hulbh
2155 Whitegates Dr.
Thunder Bay Ontario P7K 1G2
Canada

ATTN Ed Hulbh

INVOICE

No. samples	Description	Unit Price	Total
5	RX1-T(TBAY)	\$ 10.00	\$ 50.00
5	1A2-Tbay	\$ 14.75	\$ 73.75
		Subtotal: :	\$ 123.75
		GST 5% :	\$ 6.19
AMOUNT DUE: (CAD) :			\$ 129.94

Net 30 days. 1 1/2 % per month charged on overdue accounts.

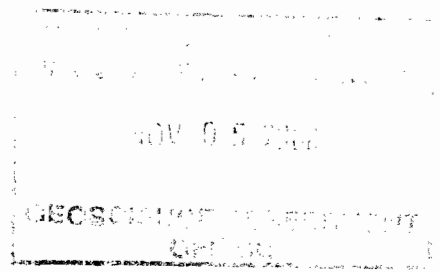
The above amount was paid by VISA. Thank you for your payment. Authorization No. 007220. October 24, 2008.

Please reference the invoice number when making a payment by Bank/Wire transfer. Thank you!

ACTIVATION LABORATORIES LTD.

1336 Sandhill Drive, Ancaster, Ontario Canada L9G 4V5 TELEPHONE +1.905.648.9611 or +1.888.228.5227 FAX +1.905.648.9613

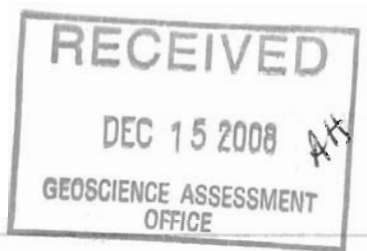
E-MAIL ancaster@actlabsint.com ACTLABS GROUP WEBSITE <http://www.actlabsint.com>



Report: A08-5945
Report Date: 09/10/2008

Final Report
Activation Laboratories

Analyte Symbol	Au
Unit Symbol	ppb
Detection Limit	5
Analysis Method	FA-AA
<hr/>	
COBB01	< 5
COBB02	< 5
COBB03	< 5
COBB04	< 5
COBB05	7



ED HOLBILK.

THUNDER BAY ONTARIO

1 807 939-1280

DEC 11 2008

DEAR SIR : SUBJECT 45 DAY NOTICE CLAIM
3016741 SQUAW LAKE TRANSACTIONS NUMBER NO 830.02056

PLEASE FIND THE INFORMATION REQUIRED TO
COMPLETE (COMPLETION ASSESSMENT WORK.) A
KEY MAP SHOWING LOCATION OF THE CLAIM
TOWNSHIP. I HAVE PROVIDED PHOTO'S OF
THE SHOWING THAT WERE REMOVED OF OVER BOUND
COBB 2 - COBB 5.

I WOULD HAVE GAVE INFORMATION ON GPS
TRACKS BY PMAT TRACKS BUT UNFORTUNATELY
THE TRACKS WERE LOST ON THE GPS UNIT. TIME
WAS SPENT GOING AROUND THE SHOWING TO
OBTAIN MGL READINGS TO STRIP OFF THE
OVER BOUND. AFTER THIS WAS COMPLETED
LOCATIONS GPS AS PER SHEET INCLUDED. COBB 1
TO COBB 5. PLEASE FIND SHEET WITH
SAMPLE DESCRIPTIONS.

HOPING THIS WILL FIX THE NOTIS DEFICIENCIES
AND COSTS CLAIMED WILL THEN BE APPLIED

THANK YOU

THE BEEP MAT TRAVERSE WERE MADE
AROUND THE SHOWINGS COBB 1 TO COBB 5'

THE HIGHEST READING THAT WERE OBTAINED
COBB 2 3 4 AND 5' WERE EXPOSED FROM

THE OPEN BURDEN PLEASE SEE PHOTOS,

COBB 2 3 4 AND 5' TRENCH OPENINGS ON
AVERAGE 4 METER X 1 METER.

TRENCHES NORTH TO SOUTH. GPS' IN TRENCH
AS PER SHEET COBB 1 / 2 / 3 / 4 / 5 /

SAMPLE DESCRIPTION - For THE FIVE
SAMPLES ASSAYED.

COBB-1 TO COBB-5.

COBB-1 - CARB Breccia. SHEAR.

COBB 2



SAME VIEW: RUSTY QTZ + S
QTZ VEIN + PY / SHEARED PORPHY.

COBB 1	200g	150	663722	5545	565
COBB 2			3819	5675	
COBB 3			3828	5651	
COBB 4			3833	5654	
COBB 5			3825	5656	

COBIS 2 SHOWING



Bleed-through

COBB 3 SHOWING



CO1515 4 STA0106

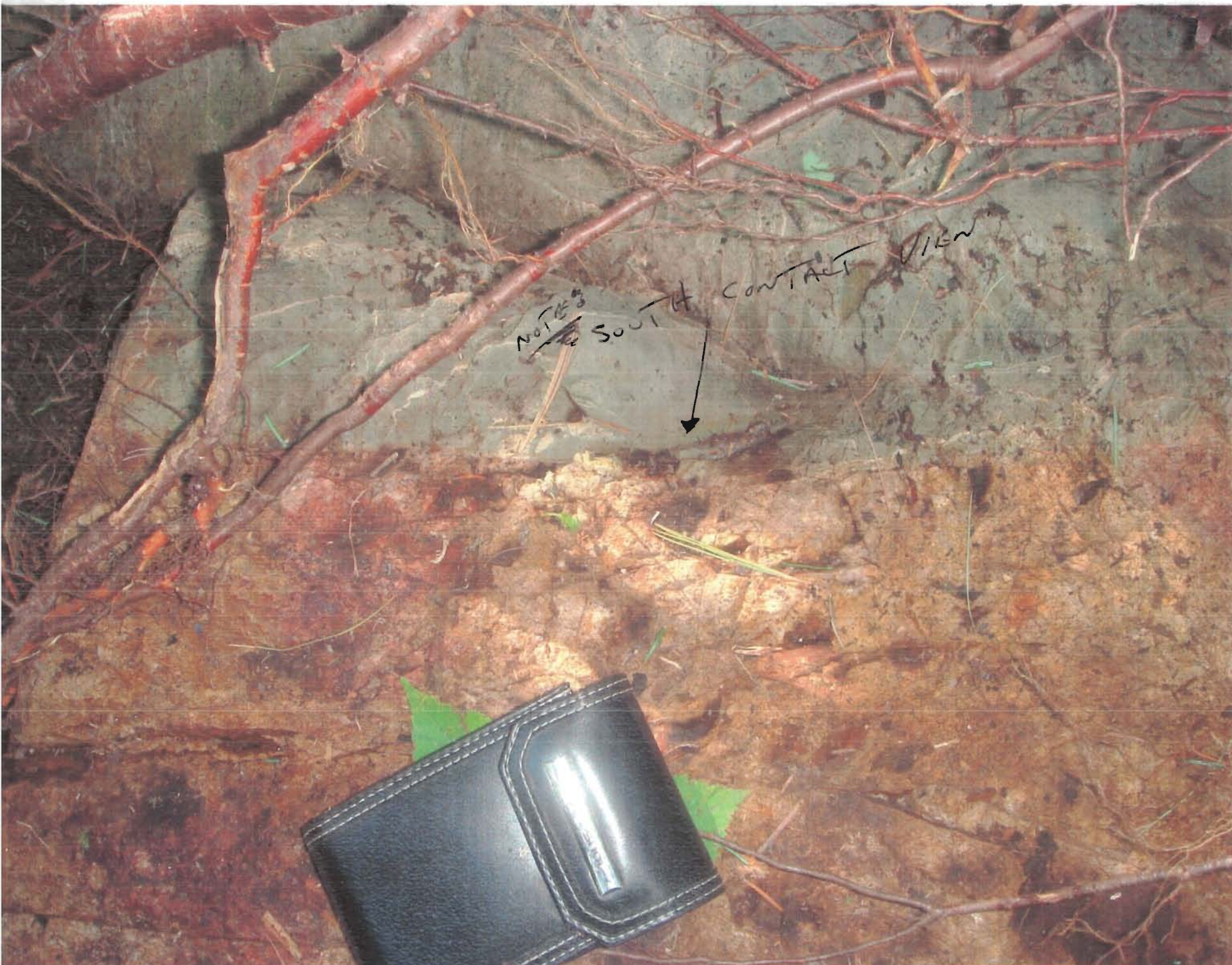


COISIS 5 SHOWING

HEAVY ROOT MATERIAL CROSSING
THIS VIEW EXPOSURE



CUTS → → HOW, etc.



~~NOTES~~ SOUTH CONTACT VIEW

F 1125 pump

