

REPORT ON DIAMOND DRILLING, LAKE SHORE PROPERTY  
TECK TOWNSHIP  
DISTRICT OF TIMISKAMING, ONT.  
BY KIRKLAND LAKE GOLD INC.

2 . 37597



S. J. Carmichael  
Kirkland Lake Gold Inc.

March 14, 2008

**TABLE OF CONTENTS**

	Page
Introduction.....	2
Property Location and Access.....	2
Land Tenure and Ownership.....	2
Exploration History.....	3
2007 Diamond Drilling Program.....	3
Summary and Conclusions.....	4

**LIST OF FIGURES**

	Following Page
Figure 1 – General Location Plan	2
Figure 2 – Claim Location Plan	3

**LIST OF APPENDICES**

- Appendix A – References
- Appendix B - Certificate of Qualifications
- Appendix C – Diamond drill Logs and Assay Certificates

**LIST OF DRAWINGS**

- Drawing No. 1 – Drill Hole Location Plan, Scale: 1"=200 ft.
- Drawing No. 2 - Drill Hole Section LS-07-01, Scale 1"=40 ft.

**REPORT ON DIAMOND DRILLING  
TECK TOWNSHIP  
DISTRICT OF TIMISKAMING, ONT.  
BY KIRKLAND LAKE GOLD INC.**

**Introduction**

The following report describes a single diamond drill hole (420 feet) completed between in November, 2007. The hole was completed to test the South Break or other potential mineralization under the proposed site for the new Canadian Tire store on the former Lake Shore property.

The drilling was completed by Rick Yost Diamond Drilling with logging completed by Kirkland Lake Gold geologists and assaying by Swastika Laboratories. All assays were less than 0.10 ounce per ton. No further work is recommended at this time.

**Property Location and Access**

The drill hole was completed on patented mining claim 16635 held by Kirkland Lake Gold, part of the former Lake Shore property. The drill hole collar is located 223 feet east of the remains of the Don Lou Hotel and 250 feet south of the Tim Horton's west restaurant. The drill hole was intended to "condemn" potential mineralization under the proposed location for the new Canadian Tire store, to be located immediately south of the Tim Horton's restaurant and north of the Kinross pond.

**Land Tenure and Ownership**

The Kirkland Lake Gold Inc. property comprises 174 patented claims covering 7892 acres, 5 Crown Leases covering 544 acres and 45 staked claims. All of the above are located in Teck and Lebel Townships. 34 of the staked claims are located in Teck Township and are contiguous with the patented claim group.

The North Teck claim block comprises 34 staked contiguous mining claims (65 unites) with a total area of 1040 hectares or 2600 acres. All claims are registered to Kirkland Lake Gold Inc. and are in good standing. The claims include:

CLAIM NO.	UNITS	DATE STAKED	APPLIED	BANK	DUE DATE
1045619	1	Aug. 11, 1988	8400	0	\$400 by Aug. 11, 2010
1045623	1	Oct. 7, 1988	8400	0	\$400 by Oct. 7, 2010
1049049	1	Oct. 28, 1988	8400	0	\$400 by Oct. 28, 2010
1213913	1	March 20, 1996	4800	0	\$4800 by March 20, 2010
1213914	3	June 13, 1996	14400	0	\$1200 by June 13, 2010
1214100	1	Oct. 4, 1996	4800	1258	\$400 by Oct. 4, 2010
1214365	2	June 13, 1996	9600	2428	\$800 by June 13, 2010
1214366	1	June 13, 1996	4800	0	\$400 by June 13, 2010
1214367	2	June 13, 1996	9600	0	\$800 by June 13, 2010
1214368	1	June 13, 1996	4800	0	\$400 by June 13, 2010
1214369	3	June 13, 1996	14400	0	\$1200 by June 13, 2010
1214370	1	June 17, 1996	4800	0	\$400 by June 17, 2010



**KIRKLAND LAKE**  
GOLD INC.

**PLAN SHOWING LOCATION OF KIRKLAND LAKE, ONTARIO, CANADA  
AND MAJOR NORTHEASTERN CITIES**

CLAIM NO.	UNITS	DATE STAKED	APPLIED	BANK	DUE DATE
1214371	2	June 13, 1996	9600	0	\$800 by June 13, 2010
1214372	2	June 13, 1996	9600	1718	\$800 by June 13, 2010
1214373	4	June 13, 1996	19200	0	\$1600 by June 13, 2010
1214374	2	June 13, 1996	10400	2388	\$800 by June 13, 2011
1217446	1	June 13, 1996	5200	239	\$400 by June 13, 2011
1217447	3	June 13, 1996	15600	0	\$1200 by June 13, 2011
1217448	2	June 13, 1996	8800	1663	\$800 by June 13, 2009
1217450	4	Aug. 1, 1996	20800	0	\$1600 by Aug. 1, 2011
1217451	4	Aug. 1, 1996	19200	62	\$1600 by Aug. 1, 2010
1217452	1	July 18, 1996	4800	1199	\$400 by July 18, 2010
1217455	1	July 18, 1996	4800	1599	\$400 by July 18, 2010
1217479	4	Aug. 1, 1996	19200	1065	\$1600 by Aug. 1, 2010
1217759	4	Oct. 4, 1996	17600	0	\$1600 by Oct. 4, 2009
1219980	1	Oct. 4, 1996	4800	1199	\$400 by Dec. 12, 2010
1219981	6	Dec. 12, 1996	28800	5500	\$2400 by Dec. 12, 2010
1221710	2	Dec. 30, 1996	9600	0	\$800 by Dec. 30, 2010
1222104	1	May 5, 1997	4000	0	\$400 by May 5, 2010
1222105	1	May 5, 1997	4000	394	\$400 by May 5, 2009
3011230	1	June 17, 2003	1600	0	\$400 by June 17, 2009
4210208	1	June 1, 2006	0	0	\$400 00 by June 1, 2008
859695	1	Nov. 7, 1985	9200	0	\$400 by Nov. 7, 2009
983045	1	Dec. 16, 1987	8400	6788	\$400 by Dec. 16, 2009

### Exploration History

The history of discovery and production at the Lake Shore Mine is covered in a number of government publications. The 1950 report by J. Thomson and the 1964 report by G. Charlewood provide the best background.

### 2007 Diamond Drilling Summary

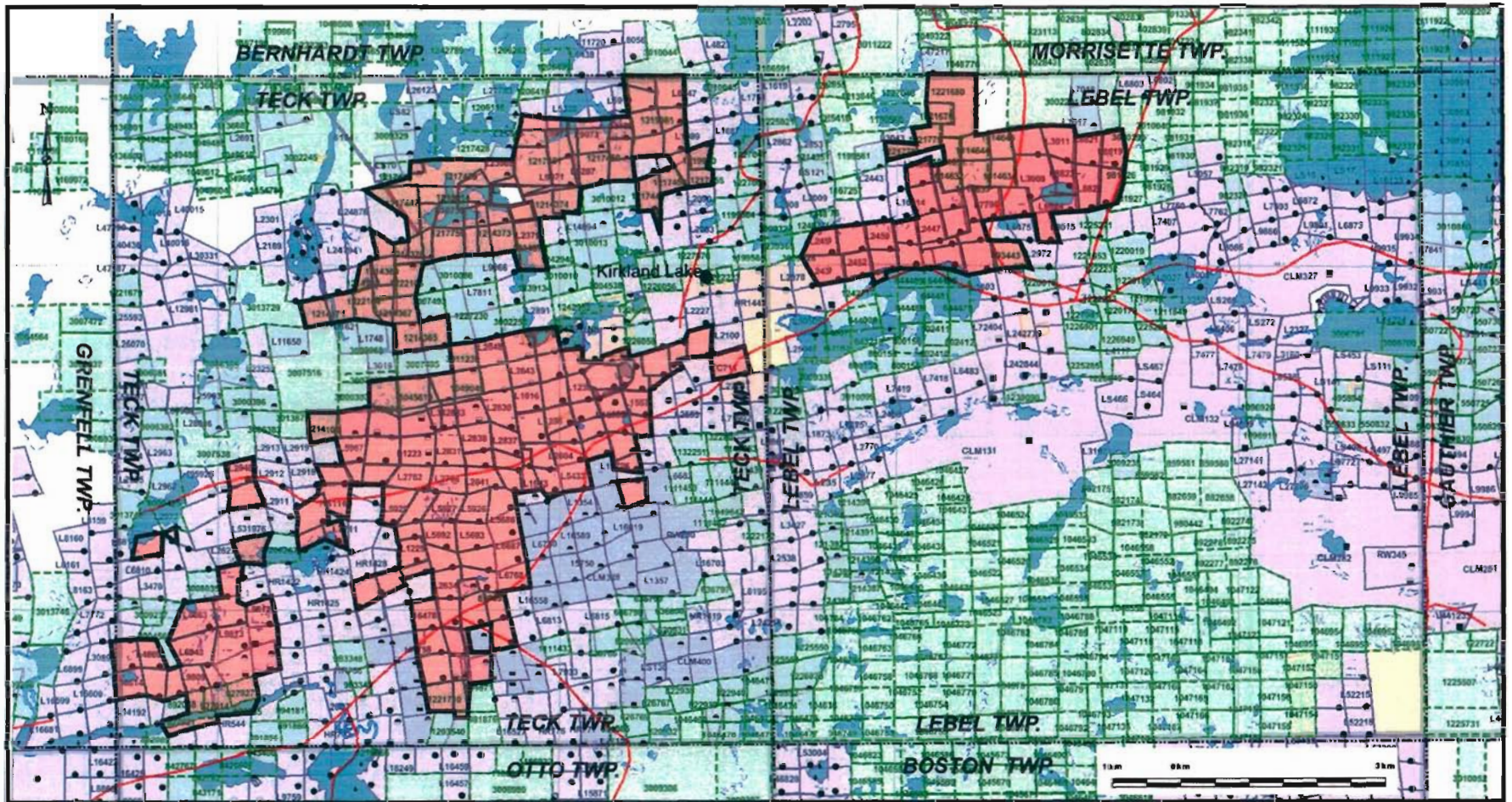
One BQ diamond drill hole was completed on the Lake Shore property east of the Don Lou Hotel grounds and south of the Tim Horton's west restaurant. The total footage drilled was 420 feet in November of 2007. The core was logged by the author at the Macassa #3 Shaft core shack. Samples for assay testing were split with the remaining half of the core retained for future reference. Assaying was completed by Swastika Laboratories. All core is stored at the Macassa #3 Shaft storage facility. The location of the diamond drill hole in Lake Shore geological coordinates is as follows:

DRILL HOLE	CLAIM	NORTHING	EASTING	AZIMUTH	DIP	LENGTH
LS07-01	P-16635	7+00S	12+60W	310	-50	420'

### Summary of Results

LS-07-01

136.0' - 137.0'	0.04 opt/1.0'
251.0' - 252.0'	0.04 opt/1.0'



**LEGEND**



PROPERTY PERIMETER

PLAN SHOWING PROPERTY BOUNDARIES  
 KIRKLAND LAKE GOLD INC - KIRKLAND LAKE OPERATIONS  
 TOWNSHIPS OF TECK AND LABEL  
 DISTRICT OF TIMISKAMING  
 PROVINCE OF ONTARIO



**KIRKLAND LAKE  
 GOLD INC.**

### Summary of Expenses

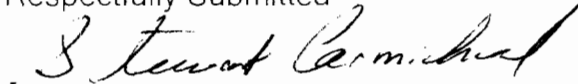
Drilling:	\$12,260.0
Core Boxes:	\$116.0
Assays:	\$67.0
Logging:	\$500.0
Report:	\$500.0

TOTAL: \$13,443.00

### Summary and Conclusions

No further work is recommended in this area. This no significant mineralization located at the proposed site for the new Canadian Tire store.

Respectfully Submitted



Stewart Carmichael, B.Sc., FGAC, P. Geo  
Chief Exploration Geologist

## Appendix A – References

- Bass, M.N.  
1961: Regional Tectonics of Part of the Southern Canadian Shield. *J. Geol.* Vol.69, No.6, p668-702.
- Charlewood, G.H.  
1964. Geology of Deep Development on the Main Ore Zone at Kirkland Lake: Ontario Department of Mines. Geological Circular No. 11. 49 p.
- Colvine, A.C. *et al.*  
1988: Archean Lode Gold Deposits in Ontario: Ontario Geological Survey, Miscellaneous Paper 139, p.43.
- Gordon, J.B., Lovell, H.L., de Grijjs, Jan and Davie, R.F.  
1979: Gold Deposits of Ontario, Part 2: Part of District of Cochrane, Districts of Muskoka, Nipissing, Parry Sound, Sudbury, Timiskaming and Counties of Southern Ontario; Ontario Geological Survey, Mineral Deposits Circular 18, 253p.
- Hawley, J.E.  
1950, Mineralogy of the Kirkland Lake Ores: Ontario Department of Mines, Annual Report for 1948, v. 57, pt. 5, pp 108-124.
- Jenson, L.S., and Langford, F.F. 1985: Geology and Petrogenesis of the Archean Abitibi Belt in the Kirkland Lake Area. Ontario; Ontario Geological Survey, Miscellaneous Paper 123, 130p.
- Savage, W.S., 1964: Mineral Resources and Mining Properties in the Kirkland Lake -Larder Lake Area; Ontario Department of Mines, Mineral Resources Circular No. 3. 108p.
- Thomson, J.E.  
1950, Geology of Teck Township and the Kenogami Lake area: Ontario Department of Mines, Annual Report for 1948, v. 57, pt. 5, pp. 1-53, accompanied by maps 1945-1 and 1946-2, scale 1:12,000 or 1: to 1,000 feet.
- Various assessment files on record at the Resident Geologists Office, Kirkland Lake



## Appendix B – Certificate of Qualifications

**STEWART CARMICHAEL, P.GEO.**

I, Stewart Carmichael, P.Geo. do hereby certify that:

1. I am currently employed as the Chief Exploration Geologist by:  
Kirkland Lake Gold Inc.  
P.O.Box 370  
Kirkland Lake, Ontario, Canada  
P2N 3J1
2. I graduated with a Bachelor of Science degree, from McMaster University in 1982.
3. I am a member of the Association of Professional Geoscientists of Ontario
4. I have worked as a geologist for a total of 26 years since my graduation from university.
5. I have been employed at the Macassa Mine property since April, 2002.
6. I have made use of internal documents and files as well as files at the Ministry of Northern Development and Mines, Kirkland Lake.

Dated this 14<sup>th</sup> Day of March, 2008

(Signed)



Stewart Carmichael, P.Geo.  
Chief Exploration Geologist

Appendix C – Diamond Drill Logs and Assay Certificates

USP Bay, Harand  
KALINTEL LAM

Project: L3

Job Name: 01  
Contract: TPCF

Job No:

Contract: YOSP

Started: 15/11/2007

Completed: 16/11/2007

Job # : 01      Range :      Chain No : 00005

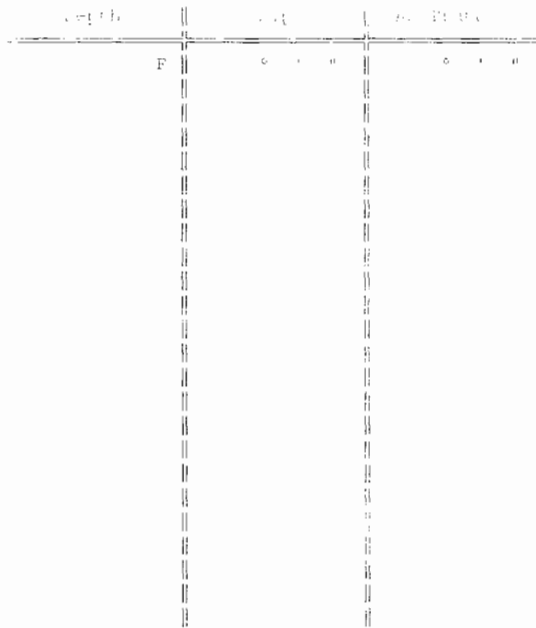
Job # :      Level :      Section : 100 W      Working :      Distance :      Shore :      Ch :      Tin :

Ullar :      Latitude :      Longitude :      Elevation :      Azimuth : 140° 0' 0"

System :      Longitude :      Elevation :      Dip : 50° 0' 0"

System :      Longitude :      Elevation :      Depth : 430.00

01/11/2007



USP Bay, Harand  
KALINTEL LAM

Water level :

0.00

0.00

0.00

01/11/2007

01/11/2007

01/11/2007



1994	TO	DESCRIPTION	Sample	FROM	TO	Length							
F	F												
		341.72											
		10" thin fault zone zone, 10-40											
		ft to 7A. 10-15 ft possible											
		is brown.											
398.50	341.10	TUFF											
		slightly buff to dark green and buff. Fairly											
		massive with 1% dark fractures											
		341.10											
		Tuff											
		341.10											
400.00	300.10	BASIC SPHATE											
		Dark green medium grained basic spherite. Fresh,											
		massive, at felsic zone.											
		300.10											
		SPHATE											
		Dark green medium grained basic spherite. Fresh,											
		massive											
		300.10											
		SPHATE											
		Dark green medium grained basic spherite. Fresh,											
		massive											
		300.10											
		SPHATE											
		Dark green medium grained basic spherite. Fresh,											
		massive											
		300.10											
		SPHATE											
		Dark green medium grained basic spherite. Fresh,											
		massive											
		300.10											
		SPHATE											
		Dark green medium grained basic spherite. Fresh,											
		massive											
		300.10											
		SPHATE											
		Dark green medium grained basic spherite. Fresh,											
		massive											
		300.10											
		SPHATE											
		Dark green medium grained basic spherite. Fresh,											
		massive											
		300.10											
		SPHATE											
		Dark green medium grained basic spherite. Fresh,											
		massive											
		300.10											
		SPHATE											
		Dark green medium grained basic spherite. Fresh,											
		massive											
		300.10											
		SPHATE											
		Dark green medium grained basic spherite. Fresh,											
		massive											
		300.10											
		SPHATE											
		Dark green medium grained basic spherite. Fresh,											
		massive											
		300.10											
		SPHATE											
		Dark green medium grained basic spherite. Fresh,											
		massive											
		300.10											
		SPHATE											
		Dark green medium grained basic spherite. Fresh,											
		massive											
		300.10											
		SPHATE											
		Dark green medium grained basic spherite. Fresh,											
		massive											
		300.10											
		SPHATE											
		Dark green medium grained basic spherite. Fresh,											
		massive											
		300.10											
		SPHATE											
		Dark green medium grained basic spherite. Fresh,											
		massive											
		300.10											
		SPHATE											
		Dark green medium grained basic spherite. Fresh,											
		massive											
		300.10											
		SPHATE											
		Dark green medium grained basic spherite. Fresh,											
		massive											
		300.10											
		SPHATE											
		Dark green medium grained basic spherite. Fresh,											
		massive											
		300.10											
		SPHATE											
		Dark green medium grained basic spherite. Fresh,											
		massive											
		300.10											
		SPHATE											
		Dark green medium grained basic spherite. Fresh,											
		massive											
		300.10											
		SPHATE											
		Dark green medium grained basic spherite. Fresh,											
		massive											
		300.10											
		SPHATE											
		Dark green medium grained basic spherite. Fresh,											
		massive											
		300.10											
		SPHATE											
		Dark green medium grained basic spherite. Fresh,											
		massive											
		300.10											
		SPHATE											
		Dark green medium grained basic spherite. Fresh,											
		massive											
		300.10											
		SPHATE											
		Dark green medium grained basic spherite. Fresh,											
		massive											
		300.10											
		SPHATE											
		Dark green medium grained basic spherite. Fresh,											
		massive											
		300.10											
		SPHATE											
		Dark green medium grained basic spherite. Fresh,											
		massive											
		300.10											
		SPHATE											
		Dark green medium grained basic spherite. Fresh,											
		massive											
		300.10											
		SPHATE											
		Dark green medium grained basic spherite. Fresh,											
		massive											
		300.10											
		SPHATE											
		Dark green medium grained basic spherite. Fresh,											
		massive											
		300.10											
		SPHATE											
		Dark green medium grained basic spherite. Fresh,											
		massive											
		300.10											
		SPHATE											
		Dark green medium grained basic spherite. Fresh,											



Established 1928

# Swastika Laboratories Ltd

Assaying - Consulting - Representation

Page 1 of 2

## Geochemical Analysis Certificate

7W-3599-RG1

Company: **KIRKLAND LAKE GOLD INC.**

Date: NOV-29-07

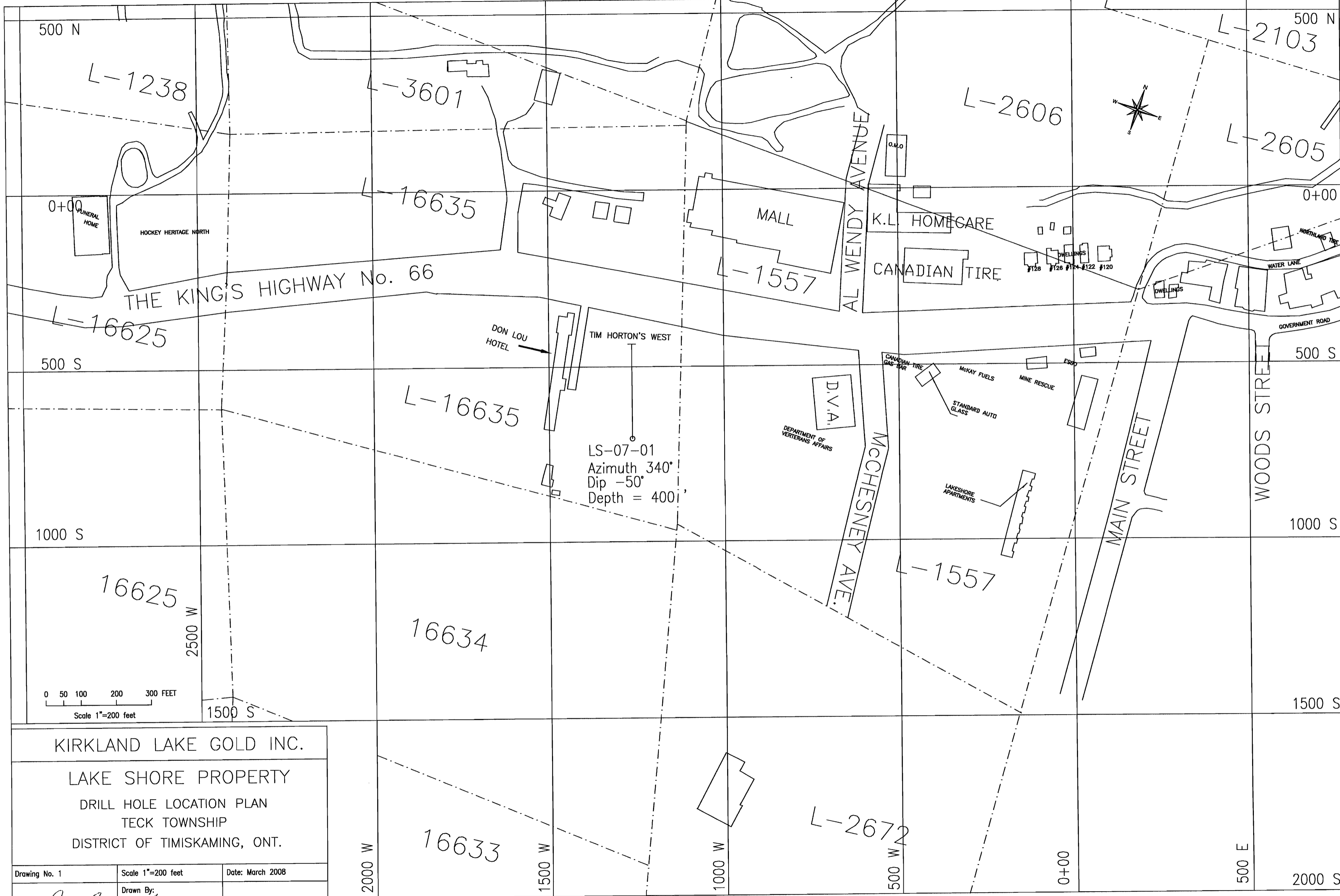
Project:

Attn: S. Gray

We hereby certify the following Geochemical Analysis of 33 Core samples submitted NOV-12-07 by .

Sample Number	Au PPB	Au Check PPB	Au oz/ton	Au Check oz/ton
223202	1310	-	0.038	-
223203	249	245	0.007	0.007
223204	10	-	<0.001	-
223205	14	-	<0.001	-
223206	1390	-	0.041	-
223207	Nil	-	<0.001	-
223208	Nil	-	<0.001	-
223235	523	-	0.015	-
223236	15	17	<0.001	<0.001
223237	19	-	<0.001	-
223238	1851	-	0.054	-
223239	447	492	0.013	0.014
223240	2781	-	0.081	-
223241	2623	-	0.077	-
223242	1510	-	0.044	-
223243	1368	-	0.040	-
223244	161	-	0.005	-
223245	1303	1406	0.038	0.041
223246	346	-	0.010	-
223247	57	-	0.002	-
223248	984	-	0.029	-
223249	418	-	0.012	-
223250	466	-	0.014	-
224151	350	389	0.010	0.011
224152	369	-	0.011	-
224153	170	-	0.005	-
224154	302	-	0.009	-
224155	170	-	0.005	-
224156	274	213	0.008	0.006
224157	831	-	0.024	-

Certified by *Diana Chant*



KIRKLAND LAKE GOLD INC.

LAKE SHORE PROPERTY  
 DRILL HOLE LOCATION PLAN  
 TECK TOWNSHIP  
 DISTRICT OF TIMISKAMING, ONT.

Drawing No. 1      Scale 1"=200 feet      Date: March 2008

Drawn By:

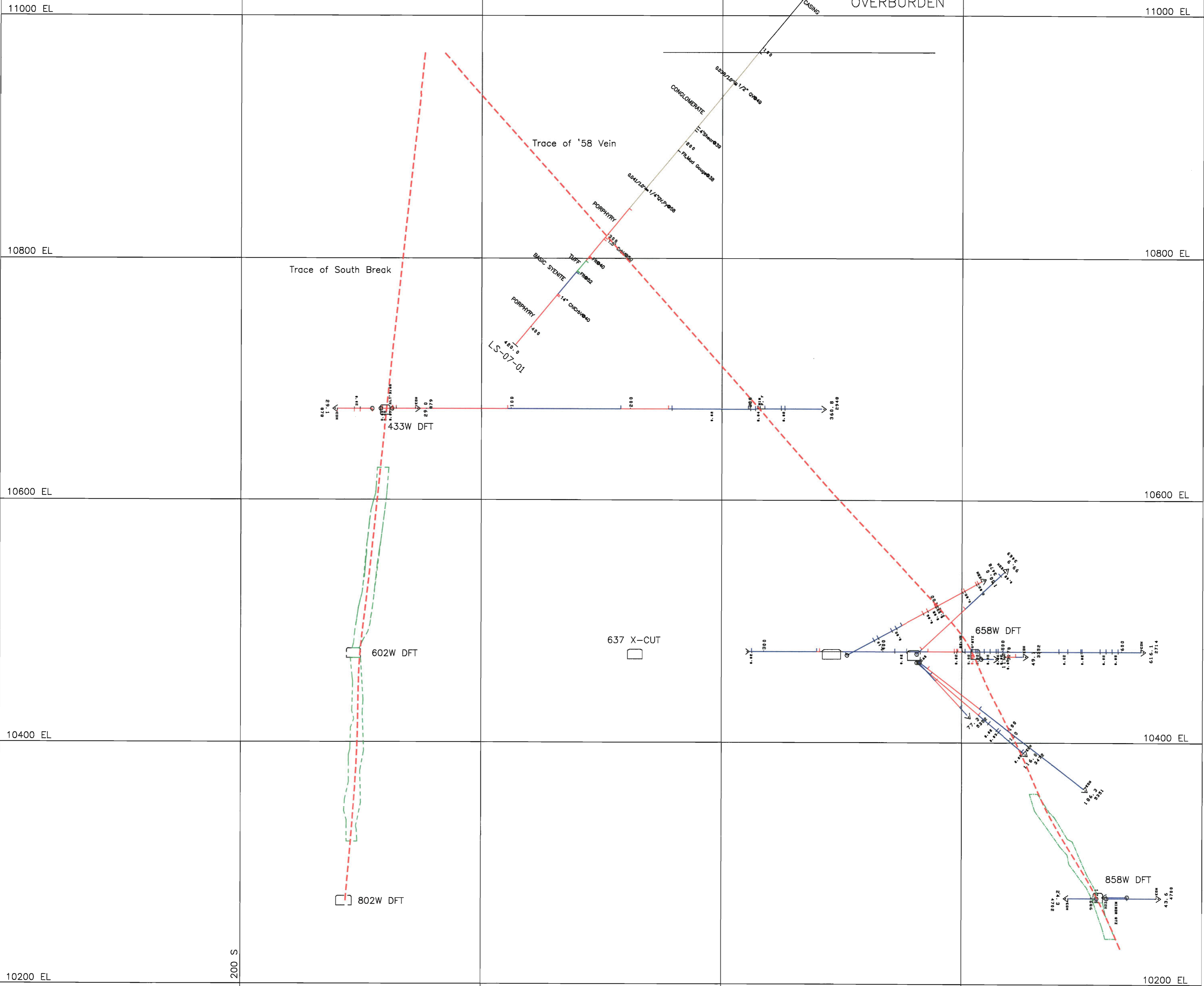
*S. Carmichael March 108*

DRILL HOLE SECTION 13+00W  
LAKE SHORE PROPERTY  
CLAIM 16635  
LOOKING GRID EAST (071°)

Collar LS-07-01  
Azimuth 340°  
Dip -50°

SURFACE

OVERBURDEN



KIRKLAND LAKE GOLD INC.

LAKE SHORE PROPERTY  
DRILL HOLE SECTION LS-07-01  
TECK TOWNSHIP  
DISTRICT OF TIMISKAMING, ONT.



LEGEND

- BASIC SYENITE
- CONGLOMERATE
- DYKE
- FELSIC SYENITE
- GREYWACKE
- PORPHYRY
- TRACHYTE
- TUFF

DATE: MARCH 2008	DRAWN	DESIGNED
DRAWING No. 2	DATAMINE	CHECKED
		APPROVED

*S. Carmichael March 10/08*