

# **Report of Diamond Drilling Program**

**For Matamec Exploration & Explorers Alliance Co.**

**Montclerg Project**

**South ½ of Lot 1 Concession I**

**Clergue Township**

**Porcupine Mining Division**



**2 • 37834**

Submitted by Bill MacRae, P.Geol  
April 25, 2008

## Table of Contents

Page 1:	Summary, Property Description
Page 2:	History
Page 3:	Regional Geology, Property Geology
Page 4:	Claim Map
Page 5:	Statement of Costs
Page 6:	Regional Location Map
Page 7:	06MAT-02 & 06MAT-03 Drill Hole Plan
Page 8:	06MAT-02 & 06MAT-03 Drill Sections
Page 9-14:	06MAT-02 Core Log
Page 15-16:	06MAT-03 Core Log
Page 17-28:	Assay Certificates
Page 29:	Certificate of Qualification

### Summary:

Matamec Exploration completed a 9 drillhole exploration program (phase 1) for a total of 2200m of the Montclerg property. The joint venture agreement finalized March 22, 2006 was followed by the planning and implantation of the phase 1 program, from June 1, 2006 to July 13, 2006. Norex Drilling of Timmins was contracted to perform the work. A core facility located at 165 Tamarack Ave was utilized for the logging and sampling of drill core. The program was managed by Dr. Ed van Hees and Aline Leclerc. The exploration program was successful in confirming values of previous work, and discovering a new zone at depth.

\*Property Description, History, Regional Geology & Property Geology are all extracted from the March 6, 2006 revised technical report on the Montclerg Project by G.A. Harron, P. Eng.

### Property Description:

Matamec Exploration Inc can earn a 51% interest in the Montclerg property from Explorers Alliance Corp. by making cash payments, issuing common stock and warrants and spending \$500,000 on the property over a period of three years.

The property is located approximately 48km northeast of the City of Timmins, Ontario. Access to the property is available via Provincial Highways 577 and 11 which traverse the properties eastern portion. Surface access to the western part of the property is gained via Clergue Township Concession I/II road that intersects Highway 11, 200m north of the Monteith access road.

The Driftwood River runs NNE-SSW through the central part of the property. The base elevation of the property is approximately 270m above sea level. The topography is generally flat, with approximately 30m of relief associated with outcrops penetrating the glaciolacustrine clay overburden, and a southerly trending esker along the eastern part of the property.

Vegetation of the property consists mainly of black spruce, with patches of alder and low shrubs. Portions of the property have been cleared for crops and cattle grazing.

The climate is typical of northern Boreal forested areas, with extended periods of subzero temperatures throughout the winter months from November to March. Moderate temperatures prevail during the summer months with temperatures in the ranging from 15-27°C, accompanied by moderate precipitation.

Exploration work can be performed year round on the property. Timmins is the nearest city providing services. Electricity, natural gas and abundant water resources are all available at the work site.

The Montclerg Project consists of 33 contiguous claim units, held as freehold patents (2) and 12 unpatented mining claims in Clergue, Walker and Stock Townships. One unpatented mining claim is situated in Walker Township, and is within the Larder Lake Mining Division. The two patented land parcels are surveyed, whereas the unpatented mining claims are not. The surface rights are attached to 3 of the units. Ownership of the land can be transferred to Matamec upon exercise of the option. All of the claims are in good standing, and all tax payments related to the patents are current.

### History:

In 1938 the Montclerg gold occurrence was discovered after a mudslide on the south bank of the Driftwood River exposed an outcrop of fragmental carbonatized mafic volcanic rocks with siliceous porphyry dykes and arsenical gold-bearing quartz veins. Grab samples ranged from 4 to 7 g/t Au.

In the period 1938-1999 extensive exploration programs including diamond drilling were conducted on the property by Anglo-Huronian Limited, Howey Gold Mines, Consolidated Montclerg Resources Limited, Newmont Explorations Canada Limited, Canamax Resources Inc, and Pentland Firth Resources Limited. However, most of the drilling has occurred above a 150m depth, suggesting that a vertical extension of the mineralization represents a reasonable exploration target.

Other exploration activities on the property over the years include trenching and channel sampling yielding indifferent results, and geophysical surveys. Ground magnetic survey have proven effective in delineating the main Pipestone Fault, diabase dykes and felsic intrusive rocks associated with the gold mineralization, whereas a VLF-EM survey does not generate recognizable drill targets.

A report for Montclerg Mines Limited in 1985, by A.S. Bayne P. Eng., included an inferred resource estimate. According to the author a total of 408100 tons grading 4.5g/t Au are present in the Montclerg Zone predicated on a lower cut-off of 1.7g/t Au over 1.2m. The estimate was based on assayed samples from 62 drill holes (11450m) over a strike length of 360m and to a depth of 150m. However the complete database used for the estimate is not available for examination.

## Regional Geology

The Archean age Abitibi Greenstone Belt ("AGB") is one of the largest and best-preserved greenstone belts in the world. It occurs within the Superior Province of the Canadian Shield and contains nine supracrustal lithotectonic assemblages spanning the period from 2750 Ma to 2675 Ma (Ayer et al, 2002). The reader is referred to Jackson and Fyon, (1991) for a full discussion of the Archean geology of the Superior Province and Ayer and al. (2001) for a more recent interpretation of the AGB geology.

The Montclerg property is situated along the Kidd-Munro volcanic assemblage / Porcupine sedimentary assemblage contact. The U/Pb age dates indicate that the two assemblages are separated by an unconformity, however the contact between these two assemblages is now a structural feature named the Pipestone Fault. This fault exhibits dextral offset.

Current geological thinking suggests that the Abitibi greenstone belt formed via autochthonous processes with much of the current complexity being structurally superimposed by multiple regional deformation events. Mantle plume activity is considered as the source of the supracrustal volcanic rocks deposited in intra-cratonic basins, rifted arc and back arc tectonic settings. Along with the concept of autochthonous greenstone belt development is the concept that major metallogenic processes are related to distinct time intervals and therefore specific chronostratigraphic lithologies (Ayer et al, 2000). In the Timmins area the Tisdale assemblage is the most prolific host of gold mines, followed by the Kidd-Munro assemblage.

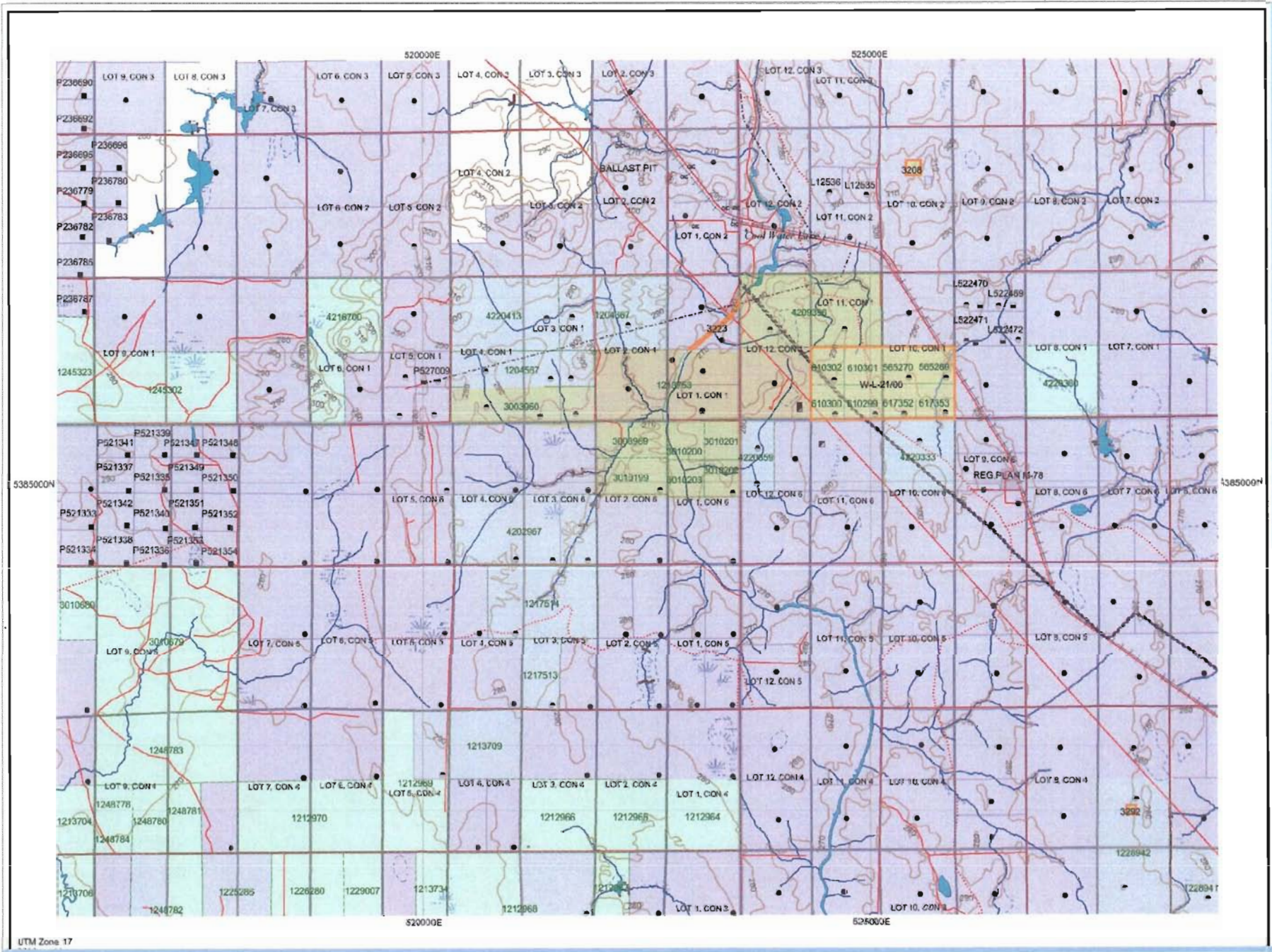
Gold deposits are structurally controlled and are widely distributed within the AGB, but all of the large deposits occur within 2km of the Destor-Porcupine Fault Zone, the Pipestone Fault Zone and the Cadillac-Larder Lake Shear Zone. As of 1990, 70% of all gold production in Canada has come from the AGB. Gold production plus reserves for Abitibi deposits (Ontario and Quebec) calculated in 1991 were estimated at about 678,000,000 tons grading 0.22 ounces gold per ton.

## Property Geology

The Montclerg property is situated along the Kidd-Munro volcanic assemblage / Porcupine sedimentary assemblage contact. To the north of the east-trending Pipestone Fault, the volcanic Kidd-Munro assemblage is dominant, and south of the fault the Porcupine sedimentary assemblage is dominant (Berger, 1996).

The Kidd-Munro assemblage is composed of mafic and felsic volcanic rocks with minor intermediate and ultramafic volcanic flows. Mafic pillowed and massive flows, flow breccia and hyaloclastite lithologies predominate. Variolitic and plagioclase-phyric flows serve as stratigraphic marker units in the assemblage.



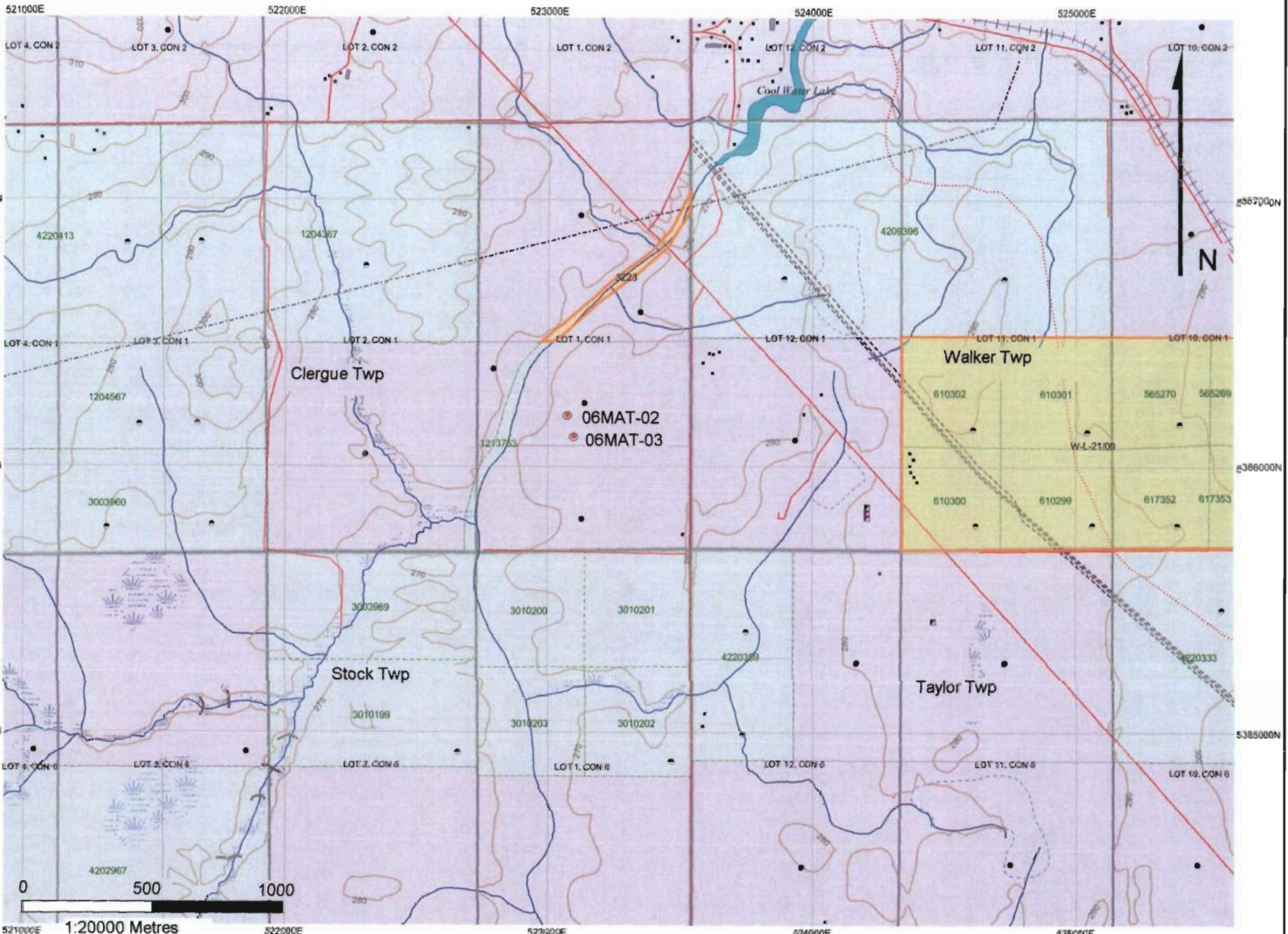






Regional Location Map






06MAT-02 & 06MAT-03 Drill Hole Plan

UTM Zone 17  
1000m grid



Drillhole Name: 06MAT-02	Project Name: Montclerg	Azimuth: Dip: -90° E.O.H. 401.00m	Orientation Tests: (azimuth / dip)	Test Type:
Drill Log For: Matamec Exploration Inc.	Started: June 8, 2006	Bit Size: BQ / NQ / HQ	Depth Azimuth / Dip	Depth Azimuth / Dip
Drilling Contractor: Norex Drilling Limited	Ended: June 9, 2006	Casing Length: Pulled: Yes / No	/	/
Collar Easting (UTM): 523067mE	Collar Easting (Grid): 49+00	Geologist's Name: E. H. van Hees	/	/
Collar Northing (UTM): 5386176mN	Collar Northing (Grid): 0+30	Geologist's Signature: 	/	/
NAD: 83	Comments: Core stored at Norex Timmins facility	Date Logged: June 9-10, 2006	/	/

Meterage			Rock Type	Description Colour, Grain Size, Texture, Minerals, Alteration, etc.	Pyrite %	Sample Intervals		Sample Length	Sample No.	Assays	
From	To	Length				From	To			Au (g/t)	Au Dup
0.00	21.70	21.70		Casing							
21.70	26.70	5.00		Felsic Pyroclastic	2%Py + As	24.40	25.10	0.70	C007558	0.103	
					5%Py+As+Sph	25.10	26.10	1.00	C007559	1.40	1.37
					Py+As	26.10	27.60	1.50	C007560	0.108	
26.70	27.10	0.40		Felsic Flow							
27.10	71.30	44.20		Felsic Pyroclastic with sericite alteration	1%Py	27.60	29.00	1.40	C007561	0.019	
				29.00-32.75: Sulphide-bearing Mineralized Zone	1%Py+As	29.00	30.00	1.00	C007562	0.099	
					5%As+Py	30.00	31.00	1.00	C007563	1.53	1.50
					5%As+Py	31.00	32.00	1.00	C007564	2.38	2.21
					5%As+Py	32.00	32.70	0.70	C007566	1.04	1.13
				37.00-39.00: Sulphide-bearing Mineralized Zone	5%As+Py+Po	36.50	38.00	1.50	C007567	0.446	
					5%As = Py	38.00	39.00	1.00	C007568	0.351	
				39.85-40.60: Sulphide-bearing Mineralized Zone	not recorded	39.85	40.60	0.75	C007570	0.395	
				41.95-47.00: Sulphide-bearing Mineralized Zone	5%As+Py	41.95	43.50	1.55	C007571	2.76	2.72
						41.95	43.50	1.55	C007572	2.23	2.17
					5%As+Py	43.50	44.50	1.00	C007573	1.99	2.07
					5%As+Py	44.50	45.50	1.00	C007574	1.06	1.11
					5%As+Py	45.50	47.00	1.50	C007575	1.055	1.05
				49.60-59.00: Sulphide-bearing Mineralized Zone	5%As+Py	49.60	50.60	1.00	C007576	1.34	1.25
					5%Py+As	50.60	51.45	0.85	C007577	0.488	
					>5%As+Py	51.45	52.45	1.00	C007578	3.32	3.10

Hole Name: 06MAT-02

Date: June 9-10, 2006

Page # 2

Meterage			Rock Type	Description Colour, Grain Size, Texture, Minerals, Alteration, etc.	Pyrite %	Sample Intervals		Sample Length	Sample No.	Assays	
From	To	Length				From	To			Au (g/t)	Au Dup
					5%As+Py	52.45	53.50	1.05	C007579	1.515	1.55
					5%Py+As	53.50	54.50	1.00	C007580	1.445	1.46
					5%As+Py	54.50	55.50	1.00	C007581	1.525	1.52
					5%As+Py	55.50	56.50	1.00	C007582	1.50	1.54
					5%As+Py	56.50	57.50	1.00	C007583	0.863	
					5%As+Py	57.50	59.00	1.50	C007584	0.833	
				60.50-71.00: Sulphide-bearing Mineralized Zone	3%Py+As	60.50	62.00	1.50	C007585	1.05	0.99
					5%As+Py	62.00	63.50	1.50	C007586	1.80	1.64
					4%As+Py	63.50	65.00	1.50	C007587	0.835	
					5%As+Py	65.00	66.00	1.00	C007588	1.29	1.39
					5%As+Py	66.00	67.40	1.40	C007589	1.03	1.08
					1%Py	67.40	68.15	0.75	C007590	0.033	
					5%As+Py	68.15	69.50	1.35	C007591	0.303	
					3%As+Py	69.50	71.00	1.50	C007592	0.574	
71.30	71.93	0.63		Rhyolite Flow - dark grey and not much alteration							
71.93	77.00	5.07		Felsic Pyroclastic with sericite alteration	3%As	71.80	72.60	0.80	C007593	0.238	
				74.12-76.25: Sulphide-bearing Mineralized Zone	4%As+Py	74.10	75.60	1.50	C007595	0.771	
					3%As+Py	75.60	76.80	1.20	C007597	0.953	
77.00	78.22	1.22		Rhyolite Flow - dark grey and not much alteration							
78.22	84.70	6.48		Felsic Pyroclastic - much of section has fine ash layers at all angles to core	4%Py+As	79.87	80.87	1.00	C007598	0.433	
				80.10-83.50: Sulphide-bearing Mineralized Zone	5%As+Py	80.87	82.27	1.40	C007599	3.13	3.26
					>5%As+Py	82.27	83.47	1.20	C007600	2.51	2.30
84.70	86.95	2.25		Felsic unit with layering	3%As+Py	85.15	86.30	1.15	C007601	1.475	1.44
				85.10-86.30: Sulphide-bearing Mineralized Zone							
86.95	89.47	2.52		Basalt with beige alteration	5%As (avg) range 2-20%	87.30	89.00	1.70	C007957	5.14	5.10
89.47	91.80	2.33		Felsic Intrusion - fine-grained with sericite alteration and irregular contacts							
91.80	94.50	2.70		Altered basalt with varioles							
94.50	99.15	4.65		Altered basalt with beige alteration							
99.15	101.40	2.25		Felsic - Massive							

Hole Name: 06MAT-02

Date: June 9-10, 2006

Page # 3

Meterage			Rock Type	Description Colour, Grain Size, Texture, Minerals, Alteration, etc.	Pyrite %	Sample Intervals		Sample Length	Sample No.	Assays	
From	To	Length				From	To			Au (g/t)	Au Dup
101.40	107.16	5.76		Felsic - Pyroclastic with sericite alteration 101.40-106.75: Sulphide-bearing Mineralized Zone	>5%As+Py	101.45	102.75	1.30	C007602	5.43	5.16
					>5%As+Py	102.75	104.00	1.25	C007603	4.11	4.16
					3%Py+As	104.00	105.10	1.10	C007604	0.804	
					5%Py+As	105.50	107.00	1.50	C007605	1.225	1.12
107.16	117.45	10.29		Massive rhyolite with sericite alteration							
117.45	126.10	8.65		Felsic Pyroclastic - mostly fine-grained with weak sericite alteration							
126.10	127.80	1.70		Massive rhyolite with sericite alteration							
127.80	128.75	0.95		Felsic Pyroclastic that has coarse fragments and sericite alteration 128.10-129.10: Sulphide-bearing Mineralized Zone	3%As+Py+Sph	128.00	128.80	0.80	C007607	3.32	3.34
128.75	143.60	14.85		Leucoxene Basalt 130.35-131.85: Sulphide-bearing Mineralized Zone	>5%As+Py	130.40	131.90	1.50	C007608	4.35	4.39
					>5%As+Py	143.50	144.35	0.85	C007609	5.08	5.33
143.60	151.45	7.85		Massive rhyolite with sericite alteration 143.60-144.40: Sulphide-bearing Mineralized Zone 150.90-152.00: Sulphide-bearing Mineralized Zone	>5%As+Py	151.00	152.00	1.00	C007610	2.37	2.45
151.45	156.10	4.65		Leucoxene Basalt							
156.10	168.95	12.85		Felsic Pyroclastic that is mostly fine-grained but has quartz eyes in places							
168.95	178.95	10.00		Felsic - Massive with lots of sericite alteration 172.50-173.90: Sulphide-bearing Mineralized Zone	3%As+Py (Avg)	172.50	173.90	1.40	C007955	0.164	
					1%As+Py	178.80	180.60	1.80	C007611	5.38	5.12
178.95	182.00	3.05		Felsic - brecciated with sericite alteration 178.95-180.50: Sulphide-bearing Mineralized Zone							
182.00	182.95	0.95		Felsic - Brecciated silicified and bleached							
182.95	185.30	2.35		Basalt - Pillow breccia with grey alteration							
185.30	192.25	6.95		Altered basalt with beige alteration 191.00-196.30: Sulphide-bearing Mineralized Zone	1%As+Py	191.00	192.80	1.80	C007612	1.365	1.35



Hole Name: 06MAT-02

Date: June 9-10, 2006


Page # 4

Meterage			Rock Type	Description Colour, Grain Size, Texture, Minerals, Alteration, etc.	Pyrite %	Sample Intervals		Sample Length	Sample No.	Assays	
From	To	Length				From	To			Au (g/t)	Au Dup
192.25	194.70	2.45		Felsic - massive with sericite alteration	3%As+Py	193.00	194.00	1.00	C007614	0.732	
					5%As+Py	194.00	195.00	1.00	C007615	2.33	2.39
194.70	201.00	6.30		Basalt - Pillow breccia with light grey alteration	2%Py+As	195.00	196.30	1.30	C007616	0.02	
201.00	201.95	0.95		Shear Zone in basalt							
201.95	203.50	1.55		Basalt with grey alteration							
203.50	203.95	0.45		Shear Zone in basalt							
203.95	225.00	21.05		Massive Basalt - fine to medium grained							
225.00	225.25	0.25		Shear Zone in basalt							
225.25	226.15	0.90		Pillow Basalt with amygdules							
226.15	227.70	1.55		Hyaloclastite (mafic subvolcanic explosion breccia)							
227.70	238.85	11.15		Massive Basalt - fine to medium grained							
238.85	256.50	17.65		Pillow basalt with large areas of grey alteration and lots of quartz veins							
256.50	262.20	5.70		Massive Basalt with some areas altered to grey							
262.20	284.05	21.85		Massive basalt - Dark Green							
284.05	289.85	5.80		Massive basalt with grey alteration							
				289.85-291.00: Sulphide-bearing Mineralized Zone	5%Py+As	289.85	291.05	1.20	C007942	1.715	1.82
291.00	299.00	8.00		Basalt pillow breccia with grey alteration							
				293.75-294.90: Sulphide-bearing Mineralized Zone	5%Py+As	293.75	294.90	1.15	C007618	0.896	
				299.00-301.20: Sulphide-bearing Mineralized Zone	>20%As+Py	299.00	300.00	1.00	C007619	7.35	7.04
				301.20-304.25: Sulphide-bearing Quartz vein Zone	>20%Py+As	300.00	301.00	1.00	C007620	>10.0	25.40
					Quartz vein with 5%Py+Po+As	301.00	302.00	1.00	C007622	3.58	3.50
					Quartz vein with 5%Py+Po	302.00	303.00	1.00	C007623	0.252	
					Quartz vein with 5%Py+Po	303.00	304.30	1.30	C007624	0.03	

Hole Name: 06MAT-02								Date: June 9-10, 2006	Page # 5		
Meterage			Rock Type	Description Colour, Grain Size, Texture, Minerals, Alteration, etc.	Pyrite %	Sample Intervals		Sample Length	Sample No.	Assays	
From	To	Length				From	To			Au (g/t)	Au Dup
304.25	310.25	6.00		Massive Basalt with grey alteration 310.25-311.35: Sulphide-bearing Mineralized Zone	5%Py+As	310.40	311.40	1.00	C007617	0.282	
311.35	314.30	2.95		Massive basalt with grey-beige alteration							
314.30	317.35	3.05		Pillow Basalt with grey-beige alteration							
317.35	324.50	7.15		Massive basalt with grey-beige alteration and tourmaline veins							
324.50	329.15	4.65		Massive basalt with dark grey alteration							
329.15	332.40	3.25		Massive basalt with grey-beige alteration							
332.40	335.15	2.75		Massive basalt with dark grey alteration							
335.15	340.25	5.10		Massive basalt with grey-beige alteration							
340.25	342.50	2.25		Massive basalt with dark grey alteration							
342.50	345.45	2.95		Silicified Zone in Basalt							
345.45	350.75	5.30		Massive basalt with light grey alteration							
350.75	351.45	0.70		Tourmaline Breccia Zone cuts core at 25° TCA							
351.45	352.15	0.70		Massive basalt with dark grey alteration 351.45-352.35: Sulphide-bearing Mineralized Zone							
352.15	353.75	1.60		Gabbro - coarse grained							
353.75	356.55	2.80		Massive basalt with dark grey alteration							
356.55	357.00	0.45		Basalt with light grey alteration 357.00-357.50: Sulphide-bearing Mineralized Zone							





Drillhole Name: 06MAT-03	Project Name: Montclerg	Azimuth: Dip: -90° E.O.H. 101.00m	Orientation Tests: (azimuth / dip)		Test Type:	
Drill Log For: Matamec Exploration Inc.	Started: June 9, 2006	Bit Size: BQ / NQ / HQ	Depth	Azimuth / Dip	Depth	Azimuth / Dip
Drilling Contractor: Norex Drilling Limited	Ended: June 10, 2006	Casing Length: Pulled: Yes / No	/	/	/	/
Collar Easting (UTM): 523079 mE	Collar Easting (Grid): 49+00	Geologist's Name: E. H. van Hees	/	/	/	/
Collar Northing (UTM): 5386115 mN	Collar Northing (Grid): -0+30	Geologist's Signature: 	/	/	/	/
NAD: 83	Comments: Core stored at Norex Timmins facility	Date Logged: June 11, 2006	/	/	/	/

Meterage			Description Colour, Grain Size, Texture, Minerals, Alteration, etc.	Pyrite %	Sample Intervals		Sample Length	Sample No.	Assays	
From	To	Length			From	To			Au (g/t)	Au Dup
0.00	22.50	22.50	Casing							
22.50	23.00	0.50	Altered basalt with limonite alteration							
23.00	33.90	10.90	Altered basalt with dark grey color							
33.90	38.70	4.80	Altered basalt with some sericite alteration							
38.70	46.95	8.25	Altered basalt with strong sericite alteration							
46.95	47.05	0.10	Limonite Alteration							
47.05	48.15	1.10	Altered basalt with grey alteration							
48.15	52.00	3.85	Altered basalt with medium grey-green colour							
52.00	53.25	1.25	Altered basalt with strong sericite alteration							
53.25	53.65	0.40	Limonite Alteration							
53.65	57.83	4.18	Breccia Zone with lots of black Tourmaline (schorl)							
57.83	61.25	3.42	Altered basalt with strong sericite alteration and minor limonite alteration							

Meterage			Rock Type	Description Colour, Grain Size, Texture, Minerals, Alteration, etc.	Pyrite %	Sample Intervals		Sample Length	Sample No.	Assays	
From	To	Length				From	To			Au (g/t)	Au Dup
61.25	61.57	0.32		Limonite Alteration							
61.57	62.18	0.61		Silicified Zone							
62.18	64.85	2.67		Altered basalt with sericite alteration							
64.85	65.18	0.33		Tourmaline zone - appears to replace original rock							
65.18	65.27	0.09		Altered basalt with albite alteration							
65.27	65.92	0.65		Silicified Zone							
65.92	71.00	5.08		Altered basalt with weak sericite alteration							
71.00	73.50	2.50		Gabbro	>5%Py+As	73.40	74.40	1.00	C007625	9.36	9.48
73.50	83.80	10.30		Altered basalt - with beige alteration	5%Py + As	74.40	75.90	1.50	C007626	3.74	3.57
					5%Py + As	75.90	77.10	1.20	C007627	1.935	1.92
					<1%Py	77.10	78.30	1.20	C007628	0.073	
					1%Py	78.30	79.30	1.00	C007629	0.026	
					5%Py + As	79.30	80.30	1.00	C007630	2.45	2.41
					>5%Py+As	80.30	81.60	1.30	C007631	8.22	8.02
					>5%Py+As	81.60	82.94	1.34	C007632	1.49	1.53
83.80	90.88	7.08		Basalt - massive							
90.88	91.24	0.36		Basalt with weak sericite alteration							
91.24	92.23	0.99		Sulphide-rich Mineralized Zone	>10%Py+As	91.73	92.23	0.50	C007633	0.401	
92.23	93.75	1.52		Basalt with weak sericite alteration							
93.75	101.00	7.25		Basalt							
101.00				EOH							



# ALS Chemex

**EXCELLENCE IN ANALYTICAL CHEMISTRY**

ALS Canada Ltd.

212 Brooksbank Avenue

North Vancouver BC V7J 2C1

Phone: 604 984 0221 Fax: 604 984 0218 www.alschemex.com

To: **MATAMEC EXPLORATION**  
**1000 DE LA GAUCHETIÈRE OUEST**  
**CP 2432**  
**MONTREAL QC H3B 4W5**

Page: 1  
Finalized Date: 15-AUG-2006  
Account: MATEXP

## CERTIFICATE TM06063715

Project:

P.O. No.:

This report is for 27 Drill Core samples submitted to our lab in Timmins, ON, Canada on 14-JUL-2006.

The following have access to data associated with this certificate:

ANDRÉ GAUTHIER  
ED VAN HEES

ALINE LECLERC

ACCOUNTS PAYABLE

## SAMPLE PREPARATION

ALS CODE	DESCRIPTION
WEI-21	Received Sample Weight
SPL-21d	Split sample - duplicate
PUL-31d	Pulverize Split - duplicate
CRU-QC	Crushing QC Test
PUL-QC	Pulverizing QC Test
LOG-22	Sample login - Rcd w/o BarCode
CRU-31	Fine crushing - 70% <2mm
SPL-21	Split sample - riffle splitter
PUL-31	Pulverize split to 85% <75 um
LOG-24	Pulp Login - Rcd w/o Barcode

## ANALYTICAL PROCEDURES

ALS CODE	DESCRIPTION	INSTRUMENT
Au-AA23	Au 30g FA-AA finish	AAS
Au-GRA21	Au 30g FA-GRAV finish	WST-SIM

To: **MATAMEC EXPLORATION**  
**ATTN: ED VAN HEES**  
**165 TAMARACK ST**  
**TIMMINS ON P4N 6P7**

This is the Final Report and supersedes any preliminary report with this certificate number. Results apply to samples as submitted. All pages of this report have been checked and approved for release.

Signature: \_\_\_\_\_

Keith Rogers, Executive Manager Vancouver Laboratory





# ALS Chemex

**EXCELLENCE IN ANALYTICAL CHEMISTRY**

ALS Canada Ltd.

212 Brooksbank Avenue

North Vancouver BC V7J 2C1

Phone: 604 984 0221 Fax: 604 984 0218 www.alschemex.com

To: MATAMEC EXPLORATION  
 1000 DE LA GAUCHETIÈRE OUEST  
 CP 2432  
 MONTREAL QC H3B 4W5

Page: 2 - A  
 Total # Pages: 2 (A)  
 Finalized Date: 15-AUG-2006  
 Account: MATEXP

## CERTIFICATE OF ANALYSIS TM06063715

Sample Description	Method Analyte Units LOR	WEI-21	Au-AA23	Au-GRA21
		Recvd Wt. kg	Au g/tonne	Au g/tonne
		0.02	0.005	0.05
C007555		2.43	<0.005	
C007556		1.95	<0.005	
C007557		2.52	<0.005	
C007558		1.22	0.103	
C007559		2.06	1.400	1.37
C007560		2.90	0.108	
C007561		2.88	0.019	
C007562		2.12	0.099	
C007563		2.02	1.530	1.50
C007564		2.15	2.38	2.21
C007565		2.43	0.024	
C007566		1.60	1.040	1.13
C007567		3.12	0.446	
C007568		2.15	0.351	
C007569		0.09	2.19	2.12
C007570		1.66	0.395	
C007571		3.56	2.76	2.72
C007572		0.04	2.23	2.17
C007573		2.03	1.990	2.07
C007574		2.08	1.060	1.11
C007575		3.05	1.055	1.05
C007576		2.33	1.340	1.25
C007577		1.79	0.488	
C007578		2.19	3.32	3.10
C007579		2.46	1.515	1.55
C007580		2.25	1.445	1.46
C007581		2.21	1.525	1.52



# ALS Chemex

EXCELLENCE IN ANALYTICAL CHEMISTRY

ALS Canada Ltd.

212 Brooksbank Avenue

North Vancouver BC V7J 2C1

Phone: 604 984 0221 Fax: 604 984 0218 www.alschemex.com

To: MATAMEC EXPLORATION  
1000 DE LA GAUCHETIÈRE OUEST  
CP 2432  
MONTREAL QC H3B 4W5

Page: 1  
Finalized Date: 18-SEP-2006  
Account: MATEXP

## CERTIFICATE TM06076900

## SAMPLE PREPARATION

Project: Mont Clerg

P.O. No.:

This report is for 9 Drill Core samples submitted to our lab in Timmins, ON, Canada on 21-AUG-2006.

The following have access to data associated with this certificate:

ANDRÉ GAUTHIER  
ED VAN HEES

ALINE LECLERC

ACCOUNTS PAYABLE

ALS CODE	DESCRIPTION
WEI-21	Received Sample Weight
LOG-22	Sample login - Rcd w/o BarCode
CRU-31	Fine crushing - 70% <2mm
SPL-21	Split sample - riffle splitter
PUL-31	Pulverize split to 85% <75 um
LOG-23	Pulp Login - Rcvd with Barcode

## ANALYTICAL PROCEDURES

ALS CODE	DESCRIPTION	INSTRUMENT
Au-AA23	Au 30g FA-AA finish	AAS
Au-GRA21	Au 30g FA-GRAV finish	WST-SIM

To: MATAMEC EXPLORATION  
ATTN: ED VAN HEES  
165 TAMARACK ST  
TIMMINS ON P4N 6P7

This is the Final Report and supersedes any preliminary report with this certificate number. Results apply to samples as submitted. All pages of this report have been checked and approved for release.

Signature:

Keith Rogers, Executive Manager Vancouver Laboratory



# ALS Chemex

**EXCELLENCE IN ANALYTICAL CHEMISTRY**

ALS Canada Ltd.

212 Brooksbank Avenue

North Vancouver BC V7J 2C1

Phone: 604 984 0221 Fax: 604 984 0218 www.alschemex.com

To: MATAMEC EXPLORATION  
1000 DE LA GAUCHETIÈRE OUEST  
CP 2432  
MONTREAL QC H3B 4W5

Page: 2 - A  
Total # Pages: 2 (A)  
Finalized Date: 18-SEP-2006  
Account: MATEXP

Project: Mont Clerg

## CERTIFICATE OF ANALYSIS TM06076900

Sample Description	Method Analyte Units LOR	WEI-21	Au-AA23	Au-AA23	Au-GRA21
		Recvd Wt. kg	Au g/tonne	Au Check g/tonne	Au g/tonne
C007955		2.90	0.164		
C007956		2.22	<0.005	<0.005	
C007957		3.70	5.14	5.10	4.89
C007958		0.06	9.50	10.0	NSS
C007959		2.61	0.011		
C007960		2.61	0.008		
C007961		4.55	<0.005		
C007962		3.53	0.005		
C007963		3.31	<0.005		

Comments: NSS is non-sufficient sample.





# ALS Chemex

EXCELLENCE IN ANALYTICAL CHEMISTRY

ALS Canada Ltd.

212 Brooksbank Avenue  
North Vancouver BC V7J 2C1

Phone: 604 984 0221 Fax: 604 984 0218 www.alschemex.com

To: MATAMEC EXPLORATION  
1000 DE LA GAUCHETIÈRE OUEST  
CP 2432  
MONTREAL QC H3B 4W5

Page: 1  
Finalized Date: 1-SEP-2006  
Account: MATEXP

## CERTIFICATE TM06077050

Project:

P.O. No.:

This report is for 1 Drill Core sample submitted to our lab in Timmins, ON, Canada on 10-AUG-2006.

The following have access to data associated with this certificate:

ANDRÉ GAUTHIER  
ED VAN HEES

ALINE LECLERC

ACCOUNTS PAYABLE

## SAMPLE PREPARATION

ALS CODE	DESCRIPTION
WEI-21	Received Sample Weight
LOG-22	Sample login - Rcd w/o BarCode
CRU-31	Fine crushing - 70% <2mm
SPL-21	Split sample - riffle splitter
PUL-31	Pulverize split to 85% <75 um

## ANALYTICAL PROCEDURES

ALS CODE	DESCRIPTION	INSTRUMENT
Au-AA23	Au 30g FA-AA finish	AAS
Au-GRA21	Au 30g FA-GRAV finish	WST-SIM

To: MATAMEC EXPLORATION  
ATTN: ED VAN HEES  
165 TAMARACK ST  
TIMMINS ON P4N 6P7

This is the Final Report and supersedes any preliminary report with this certificate number. Results apply to samples as submitted. All pages of this report have been checked and approved for release.

Signature:

Keith Rogers, Executive Manager Vancouver Laboratory



# ALS Chemex

**EXCELLENCE IN ANALYTICAL CHEMISTRY**

ALS Canada Ltd.

212 Brookbank Avenue

North Vancouver BC V7J 2C1

Phone: 604 984 0221 Fax: 604 984 0218 [www.alschemex.com](http://www.alschemex.com)

To: MATAMEC EXPLORATION  
1000 DE LA GAUCHETIÈRE OUEST  
CP 2432  
MONTREAL QC H3B 4W5

Page: 2 - A  
Total # Pages: 2 (A)  
Finalized Date: 1-SEP-2006  
Account: MATEXP

## CERTIFICATE OF ANALYSIS TM06077050

Sample Description	Method Analyte Units LOR	WEI-21	Au-AA23	Au-GRA21
		Recvd Wt. kg	Au g/tonne	Au g/tonne
C007942		2.26	1.715	1.82



# ALS Chemex

EXCELLENCE IN ANALYTICAL CHEMISTRY

ALS Canada Ltd.

212 Brooksbank Avenue

North Vancouver BC V7J 2C1

Phone: 604 984 0221 Fax: 604 984 0218 www.alschemex.com

To: MATAMEC EXPLORATION  
1000 DE LA GAUCHETIÈRE OUEST  
CP 2432  
MONTREAL QC H3B 4W5

Page: 1  
Finalized Date: 14-AUG-2006  
Account: MATEXP

## CERTIFICATE TM06065627

Project:

P.O. No.:

This report is for 43 Drill Core samples submitted to our lab in Timmins, ON, Canada on 14-JUL-2006.

The following have access to data associated with this certificate:

ANDRÉ GAUTHIER  
ED VAN HEES

ALINE LECLERC

ACCOUNTS PAYABLE

## SAMPLE PREPARATION

ALS CODE	DESCRIPTION
WEI-21	Received Sample Weight
SPL-21d	Split sample - duplicate
PUL-31d	Pulverize Split - duplicate
CRU-QC	Crushing QC Test
PUL-QC	Pulverizing QC Test
LOG-22	Sample login - Rcd w/o BarCode
CRU-31	Fine crushing - 70% <2mm
SPL-21	Split sample - riffle splitter
PUL-31	Pulverize split to 85% <75 um
LOG-24	Pulp Login - Rcd w/o Barcode

## ANALYTICAL PROCEDURES

ALS CODE	DESCRIPTION	INSTRUMENT
Au-AA23	Au 30g FA-AA finish	AAS
Au-GRA21	Au 30g FA-GRAV finish	WST-SIM

To: MATAMEC EXPLORATION  
ATTN: ED VAN HEES  
165 TAMARACK ST  
TIMMINS ON P4N 6P7

This is the Final Report and supersedes any preliminary report with this certificate number. Results apply to samples as submitted. All pages of this report have been checked and approved for release.

Signature: \_\_\_\_\_

Keith Rogers, Executive Manager Vancouver Laboratory



# ALS Chemex

EXCELLENCE IN ANALYTICAL CHEMISTRY

ALS Canada Ltd.

212 Brooksbank Avenue  
North Vancouver BC V7J 2C1

Phone: 604 984 0221 Fax: 604 984 0218 www.alschemex.com

To: MATAMEC EXPLORATION  
1000 DE LA GAUCHETIÈRE OUEST  
CP 2432  
MONTREAL QC H3B 4W5

Page: 2 - A  
Total # Pages: 3 (A)  
Finalized Date: 14-AUG-2006  
Account: MATEXP

## CERTIFICATE OF ANALYSIS TM06065627

Sample Description	Method Analyte Units LOR	WEI-21	Au-AA23	Au-GRA21
		Recvd Wt. kg	Au g/tonne	Au g/tonne
		0.02	0.005	0.05
C007582		2.31	1.500	1.54
C007583		2.12	0.863	
C007584		3.42	0.833	
C007585		3.28	1.050	0.99
C007586		3.56	1.800	1.64
C007587		3.33	0.835	
C007588		2.23	1.290	1.39
C007589		3.17	1.030	1.08
C007590		1.82	0.033	
C007591		3.10	0.303	
C007592		3.48	0.574	
C007593		1.83	0.238	
C007594		2.76	<0.005	
C007595		3.06	0.771	
C007596		0.08	>10.0	10.10
C007597		2.91	0.953	
C007598		2.41	0.433	
C007599		3.52	3.13	3.26
C007600		2.87	2.51	2.30
C007601		2.62	1.475	1.44
C007602		2.81	5.43	5.16
C007603		2.54	4.11	4.16
C007604		1.94	0.804	
C007605		2.75	1.225	1.12
C007606		0.04	1.470	1.47
C007607		1.56	3.32	3.34
C007608		3.65	4.35	4.39
C007609		2.13	5.08	5.33
C007610		2.51	2.37	2.45
C007611		3.48	5.38	5.12
C007612		3.96	1.365	1.35
C007613		3.18	0.038	
C007614		2.39	0.732	
C007615		2.26	2.33	2.39
C007616		3.00	0.020	
C007617		2.92	0.282	
C007618		2.78	0.896	
C007619		2.89	7.35	7.04
C007620		2.72	>10.0	25.4
C007621		0.08	7.62	7.72



# ALS Chemex

**EXCELLENCE IN ANALYTICAL CHEMISTRY**

ALS Canada Ltd.

212 Brooksbank Avenue

North Vancouver BC V7J 2C1

Phone: 604 984 0221 Fax: 604 984 0218 www.alschemex.com

To: MATAMEC EXPLORATION  
1000 DE LA GAUCHETIÈRE OUEST  
CP 2432  
MONTREAL QC H3B 4W5

Page: 3 - A

Total # Pages: 3 (A)

Finalized Date: 14-AUG-2006

Account: MATEXP

## CERTIFICATE OF ANALYSIS TM06065627

Sample Description	Method Analyte Units LOR	WEI-21	Au-AA23	Au-GRA21
		Recvd Wt. kg	Au g/tonne	Au g/tonne
		0.02	0.005	0.05
C007622		2.48	3.58	3.50
C007623		2.28	0.252	
C007624		3.26	0.030	





# ALS Chemex

EXCELLENCE IN ANALYTICAL CHEMISTRY

ALS Canada Ltd.

212 Brooksbank Avenue

North Vancouver BC V7J 2C1

Phone: 604 984 0221 Fax: 604 984 0218 www.alschemex.com

To: MATAMEC EXPLORATION  
1000 DE LA GAUCHETIÈRE OUEST  
CP 2432  
MONTREAL QC H3B 4W5

Page: 1  
Finalized Date: 24-AUG-2006  
Account: MATEXP

## CERTIFICATE TM06061438

Project: Montclerg

P.O. No.:

This report is for 54 Drill Core samples submitted to our lab in Timmins, ON, Canada on 24-JUL-2006.

The following have access to data associated with this certificate:

ANDRÉ GAUTHIER  
ED VAN HEES

ALINE LECLERC

ACCOUNTS PAYABLE

## SAMPLE PREPARATION

ALS CODE	DESCRIPTION
WEI-21	Received Sample Weight
CRU-QC	Crushing QC Test
PUL-QC	Pulverizing QC Test
LOG-22	Sample login - Rcd w/o BarCode
CRU-31	Fine crushing - 70% <2mm
SPL-21	Split sample - riffle splitter
PUL-31	Pulverize split to 85% <75 um
LOG-24	Pulp Login - Rcd w/o Barcode

## ANALYTICAL PROCEDURES

ALS CODE	DESCRIPTION	INSTRUMENT
Au-AA23	Au 30g FA-AA finish	AAS
Au-GRA21	Au 30g FA-GRAV finish	WST-SIM

To: MATAMEC EXPLORATION  
ATTN: ED VAN HEES  
165 TAMARACK ST  
TIMMINS ON P4N 6P7

This is the Final Report and supersedes any preliminary report with this certificate number. Results apply to samples as submitted. All pages of this report have been checked and approved for release.

Signature:

Keith Rogers, Executive Manager Vancouver Laboratory



# ALS Chemex

**EXCELLENCE IN ANALYTICAL CHEMISTRY**

ALS Canada Ltd.

212 Brooksbank Avenue

North Vancouver BC V7J 2C1

Phone: 604 984 0221 Fax: 604 984 0218 www.alschemex.com

To: MATAMEC EXPLORATION  
 1000 DE LA GAUCHETIÈRE OUEST  
 CP 2432  
 MONTREAL QC H3B 4W5

Page: 2 - A  
 Total # Pages: 3 (A)  
 Finalized Date: 24-AUG-2006  
 Account: MATEXP

Project: Montclerg

## CERTIFICATE OF ANALYSIS TM06061438

Sample Description	Method Analyte Units LOR	Au-AA23	Au-GRA21	WEI-21
		Au g/tonne	Au g/tonne	Recvd Wt. kg
C007733		5.35	5.33	2.25
C007734		0.083		1.88
C007735		0.973		1.22
C007736		0.596		2.38
C007737		0.007		0.64
C007738		0.143		3.09
C007739		0.011		2.20
C007740		<0.005		0.76
C007741		0.006		1.66
C007742		0.009		1.39
C007743		0.069		3.52
C007744		0.196		1.89
C007745		0.157		3.77
C007746		0.552		3.24
C007747		1.530	1.59	3.98
C007748		1.115	1.15	4.11
C007749		0.171		4.28
C007750		1.175	1.20	3.96
C007751		0.258		3.15
C007752		2.29	2.19	3.88
C007753		2.29	2.25	4.35
C007754		0.545		3.77
C007755		2.74	2.74	3.18
C007756		0.005		2.32
C007757		3.55	3.46	0.09
C007758		1.515	1.52	2.28
C007759		2.14	2.15	2.40
C007760		0.161		4.06
C007761		0.287		2.04
C007762		0.013		1.49
C007763		0.198		1.44
C007764		1.830	1.87	4.30
C007765		1.260	1.34	3.35
C007766		1.790	1.76	2.61
C007767		5.45	5.34	2.47
C007768		1.805	1.82	2.33
C007769		2.38	2.39	1.95
C007770		3.12	3.08	2.77
C007771		6.92	6.96	2.07
C007772		0.392		1.76



# ALS Chemex

**EXCELLENCE IN ANALYTICAL CHEMISTRY**

ALS Canada Ltd.

212 Brooksbank Avenue

North Vancouver BC V7J 2C1

Phone: 604 984 0221 Fax: 604 984 0218 www.alschemex.com

To: MATAMEC EXPLORATION  
1000 DE LA GAUCHETIÈRE OUEST  
CP 2432  
MONTREAL QC H3B 4W5

Page: 3 - A

Total # Pages: 3 (A)

Finalized Date: 24-AUG-2006

Account: MATEXP

Project: Montclerg

## CERTIFICATE OF ANALYSIS TM06061438

Sample Description	Method Analyte Units LOR	Au-AA23	Au-GRA21	WEI-21
		Au g/tonne 0.005	Au g/tonne 0.05	Recvd Wt. kg 0.02
C007773		0.365		3.42
C007774		<0.005		2.98
C007775		>10.0	10.10	0.09
C007776		0.005		2.47
C007777		<0.005		1.54
C007778		<0.005		3.15
C007779		<0.005		1.87
C007780		<0.005		3.77
C007781		0.078		2.33
C007782		0.016		1.42
C007783		0.132		1.25
C007784		1.750	1.76	2.70
C007785		1.410	1.40	3.14
C007786		0.945		2.83

## CERTIFICATE

With reference to my report on the Montclerg Project, dated April 25, 2008,

I, William E. MacRae, of the City of Timmins, Ontario, do hereby certify and state that:

(1) I have graduated from Lakehead University with the degree of Bachelor of Science (Honours) in 1975 and have obtained the degree of Masters of Science from McMaster University in 1982;

(2) I have practised my profession continuously for the past thirty years;

(3) I have no interest, direct or indirect, in the mining claims comprising the properties described in this report nor do I expect to receive any; and

(4) this report is based on personal knowledge of the project

Dated this 25th day of April, 2008  
Timmins, Ontario.

A handwritten signature in black ink, appearing to read 'W. MacRae', written in a cursive style.

W. MacRae, M.Sc. P.Geol.  
Consulting Geologist