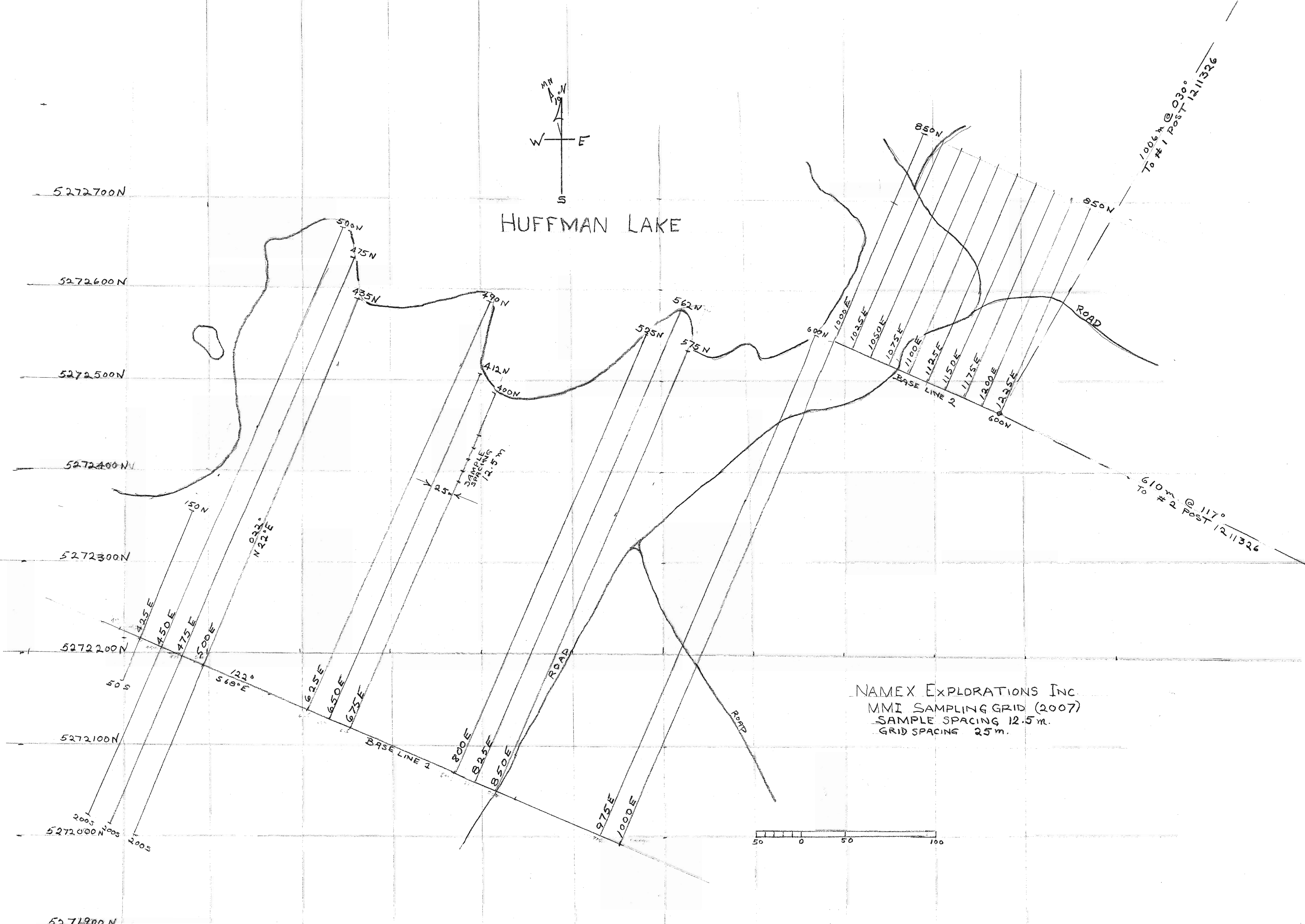


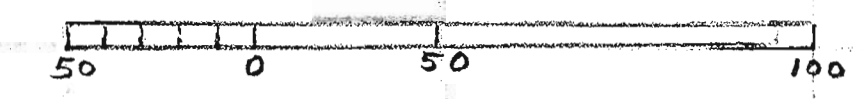
HUFFMAN LAKE

5272700N  
5272600N  
5272500N  
5272400N  
5272300N  
5272200N  
5272100N  
5272000N  
5271900N

416400E  
416500E  
416600E  
416700E  
416800E  
416900E  
417000E  
417100E  
417200E  
417300E  
417400E



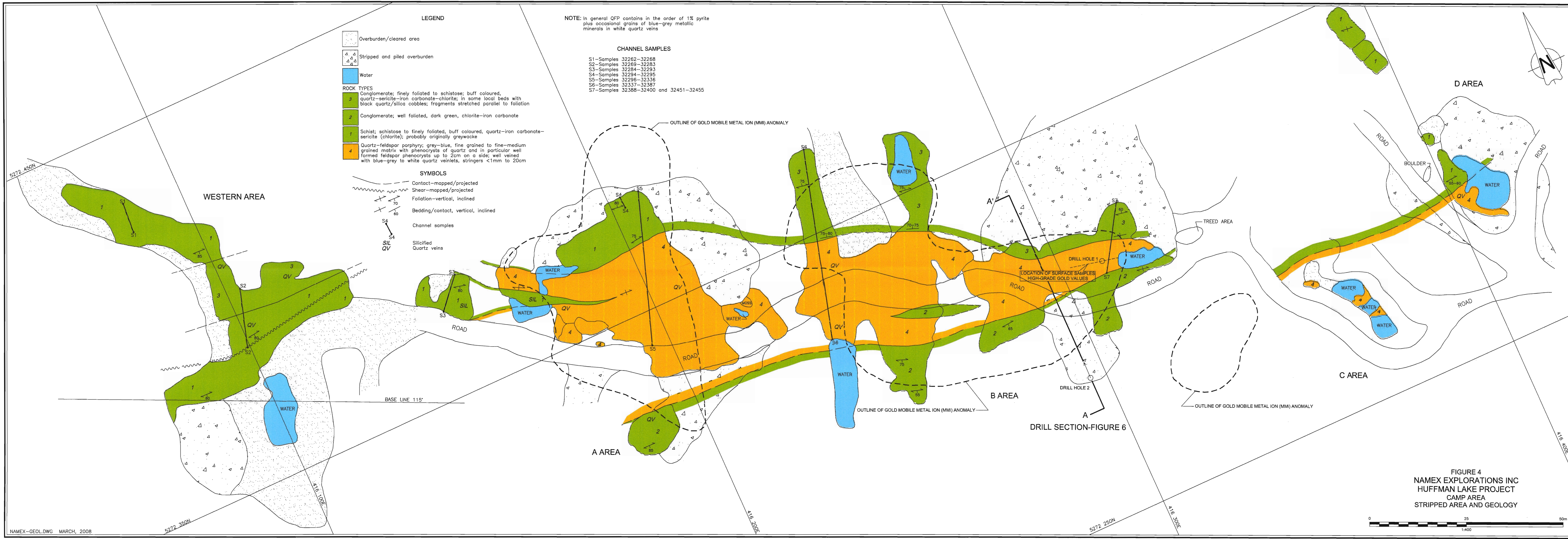
NAMEX EXPLORATIONS INC.  
MMI SAMPLING GRID (2007)  
SAMPLE SPACING 12.5 m.  
GRID SPACING 25 m.



1006 m @ 036°  
To #1 Post 1211326

610 m @ 117°  
To #2 Post 1211326

RECEIVED  
MAY 07 2008  
GEOSCIENCE ASSESSMENT  
OFFICE



**LEGEND**

- Overburden/cleared area
- Stripped and piled overburden
- Water
- ROCK TYPES**
- Conglomerate; finely foliated to schistose; buff coloured, quartz-sericite-iron carbonate-chlorite; in some local beds with black quartz/silica cobbles; fragments stretched parallel to foliation
- Conglomerate; well foliated, dark green, chlorite-iron carbonate
- Schist; schistose to finely foliated, buff coloured, quartz-iron carbonate-sericite (chlorite); probably originally greywacke
- Quartz-feldspar porphyry; grey-blue, fine grained to fine-medium grained matrix with phenocrysts of quartz and in particular well formed feldspar phenocrysts up to 2cm on a side; well veined with blue-grey to white quartz veinlets, stringers <1mm to 20cm

**SYMBOLS**

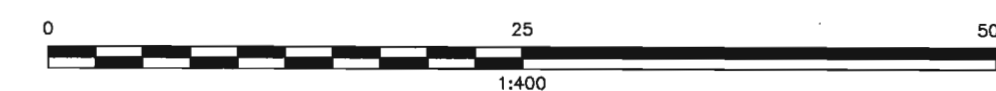
- Contact-mapped/projected
- Shear-mapped/projected
- Foliation-vertical, inclined
- Bedding/contact, vertical, inclined
- Channel samples
- Silicified Quartz veins

**NOTE:** In general QFP contains in the order of 1% pyrite plus occasional grains of blue-grey metallic minerals in white quartz veins

**CHANNEL SAMPLES**

- S1-Samples 32262-32268
- S2-Samples 32269-32283
- S3-Samples 32284-32293
- S4-Samples 32294-32295
- S5-Samples 32296-32336
- S6-Samples 32337-32387
- S7-Samples 32388-32400 and 32451-32455

**FIGURE 4**  
NAMEX EXPLORATIONS INC  
HUFFMAN LAKE PROJECT  
CAMP AREA  
STRIPPED AREA AND GEOLOGY



DRILL HOLE HL-07-02  
ASSAYS

FROM-TO	g/t Au
4.0m-5.0m	0.201
5.0m-6.0m	0.073
6.0m-7.0m	0.072
7.0m-8.0m	0.063
8.0m-9.0m	0.047
9.0m-10.0m	0.054
10.0m-11.0m	0.110
11.0m-12.0m	0.078
12.0m-13.0m	0.059
13.0m-14.0m	0.077
14.0m-15.0m	0.079
15.0m-16.0m	0.079
16.0m-17.0m	0.072
17.0m-18.0m	0.106
18.0m-19.0m	0.308
19.0m-20.0m	0.081
20.0m-21.0m	0.092
21.0m-22.0m	0.165
22.0m-23.0m	0.164
23.0m-24.0m	0.141
24.0m-25.0m	0.043
25.0m-26.0m	0.194
26.0m-27.0m	0.111
27.0m-28.0m	0.116
28.0m-29.0m	0.134
29.0m-30.0m	0.121
30.0m-31.0m	0.184
31.0m-32.0m	0.283
32.0m-33.0m	0.101
33.0m-34.0m	0.534
34.0m-35.0m	0.302
35.0m-36.0m	0.108
36.0m-37.0m	0.202
37.0m-38.0m	0.073
38.0m-39.0m	0.058
39.0m-40.0m	0.096
40.0m-41.0m	0.161
41.0m-42.0m	0.101
42.0m-43.0m	0.104
43.0m-44.0m	0.078
44.0m-45.0m	0.110
45.0m-46.0m	0.158
46.0m-47.0m	0.208
47.0m-48.0m	0.102
48.0m-49.0m	0.185
49.0m-50.0m	0.148
50.0m-51.0m	0.131
51.0m-52.0m	0.148
52.0m-53.0m	0.162
53.0m-54.0m	0.179
54.0m-55.0m	0.130
55.0m-56.0m	0.798
56.0m-57.0m	0.265
57.0m-58.0m	0.085
58.0m-59.0m	0.145
59.0m-60.0m	0.262
60.0m-61.0m	0.154
61.0m-62.0m	0.225
62.0m-63.0m	0.202
63.0m-64.0m	0.116
64.0m-65.0m	0.348
65.0m-66.0m	0.293
66.0m-67.0m	0.206
67.0m-68.0m	0.177
68.0m-69.0m	0.209
69.0m-70.0m	0.134
70.0m-71.0m	0.163
71.0m-72.0m	0.154
72.0m-73.0m	0.178
73.0m-74.0m	0.183
74.0m-75.0m	0.226
75.0m-76.0m	0.349
76.0m-77.0m	0.270
77.0m-78.0m	0.181
78.0m-79.0m	0.168
79.0m-80.0m	0.254
80.0m-81.0m	0.173
81.0m-82.0m	0.390
82.0m-83.0m	0.325
83.0m-84.0m	0.296
84.0m-85.0m	0.362
85.0m-86.0m	0.349
86.0m-87.0m	0.248
87.0m-88.0m	0.208
88.0m-89.0m	0.159
89.0m-90.0m	0.159
90.0m-90.45m	1.645
90.45m-91.1m	0.936
91.1m-92.0m	0.243
92.0m-93.0m	0.278
93.0m-94.0m	0.212
94.0m-95.0m	0.154
95.0m-96.0m	0.189
96.0m-97.0m	0.282
97.0m-98.0m	0.374
98.0m-99.0m	0.354
99.0m-99.9m	0.251

DRILL SECTION A-A' (FIGURES 4 AND 5)

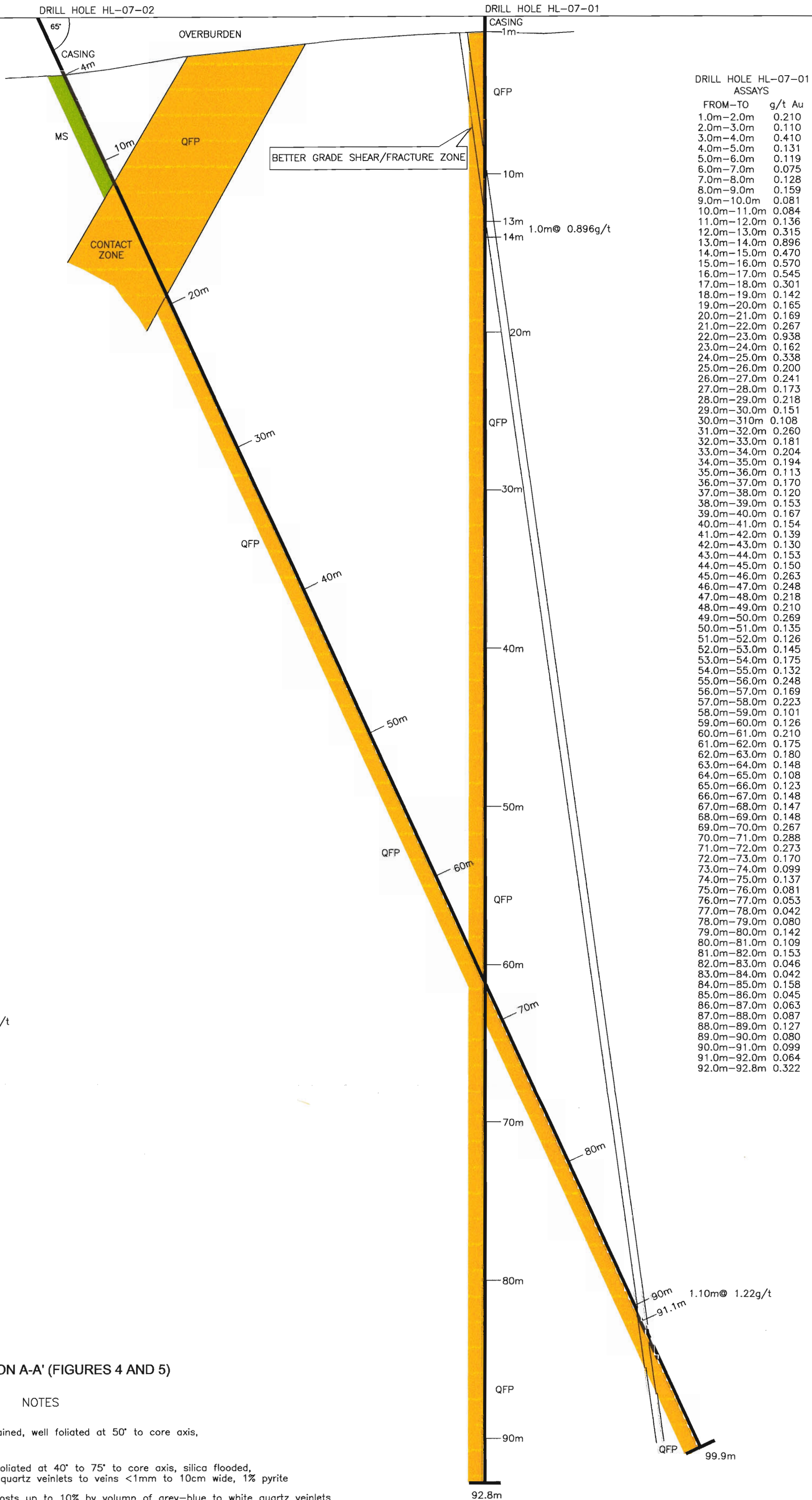
NOTES



MS Metasediment, very fine grained, well foliated at 50° to core axis, probably metagreywacke.



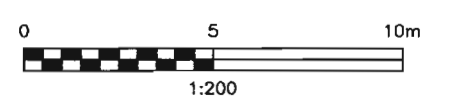
CONTACT ZONE- sheared, foliated at 40° to 75° to core axis, silica flooded, well veined with grey-blue quartz veinlets to veins <1mm to 10cm wide, 1% pyrite  
QFP Quartz-feldspar porphyry hosts up to 10% by volume of grey-blue to white quartz veinlets and stringers from <1mm to 10cm in width usually in stockwork-like zones. Contains generally 1% pyrite as disseminations and hosted in fine fractures. Minor amounts of blue-grey metallic mineral (tetrahedrite?) usually in white quartz veins.



DRILL HOLE HL-07-01  
ASSAYS

FROM-TO	g/t Au
1.0m-2.0m	0.210
2.0m-3.0m	0.110
3.0m-4.0m	0.410
4.0m-5.0m	0.131
5.0m-6.0m	0.119
6.0m-7.0m	0.075
7.0m-8.0m	0.128
8.0m-9.0m	0.159
9.0m-10.0m	0.081
10.0m-11.0m	0.084
11.0m-12.0m	0.136
12.0m-13.0m	0.315
13.0m-14.0m	0.896
14.0m-15.0m	0.470
15.0m-16.0m	0.570
16.0m-17.0m	0.545
17.0m-18.0m	0.301
18.0m-19.0m	0.142
19.0m-20.0m	0.165
20.0m-21.0m	0.169
21.0m-22.0m	0.267
22.0m-23.0m	0.938
23.0m-24.0m	0.162
24.0m-25.0m	0.338
25.0m-26.0m	0.200
26.0m-27.0m	0.241
27.0m-28.0m	0.173
28.0m-29.0m	0.218
29.0m-30.0m	0.151
30.0m-31.0m	0.108
31.0m-32.0m	0.260
32.0m-33.0m	0.181
33.0m-34.0m	0.204
34.0m-35.0m	0.194
35.0m-36.0m	0.113
36.0m-37.0m	0.170
37.0m-38.0m	0.120
38.0m-39.0m	0.153
39.0m-40.0m	0.167
40.0m-41.0m	0.154
41.0m-42.0m	0.139
42.0m-43.0m	0.130
43.0m-44.0m	0.153
44.0m-45.0m	0.150
45.0m-46.0m	0.263
46.0m-47.0m	0.248
47.0m-48.0m	0.218
48.0m-49.0m	0.210
49.0m-50.0m	0.269
50.0m-51.0m	0.135
51.0m-52.0m	0.126
52.0m-53.0m	0.145
53.0m-54.0m	0.175
54.0m-55.0m	0.132
55.0m-56.0m	0.248
56.0m-57.0m	0.169
57.0m-58.0m	0.223
58.0m-59.0m	0.101
59.0m-60.0m	0.126
60.0m-61.0m	0.210
61.0m-62.0m	0.175
62.0m-63.0m	0.180
63.0m-64.0m	0.148
64.0m-65.0m	0.108
65.0m-66.0m	0.123
66.0m-67.0m	0.148
67.0m-68.0m	0.147
68.0m-69.0m	0.148
69.0m-70.0m	0.267
70.0m-71.0m	0.288
71.0m-72.0m	0.273
72.0m-73.0m	0.170
73.0m-74.0m	0.099
74.0m-75.0m	0.137
75.0m-76.0m	0.081
76.0m-77.0m	0.053
77.0m-78.0m	0.042
78.0m-79.0m	0.080
79.0m-80.0m	0.142
80.0m-81.0m	0.109
81.0m-82.0m	0.153
82.0m-83.0m	0.046
83.0m-84.0m	0.042
84.0m-85.0m	0.158
85.0m-86.0m	0.045
86.0m-87.0m	0.063
87.0m-88.0m	0.087
88.0m-89.0m	0.127
89.0m-90.0m	0.080
90.0m-91.0m	0.099
91.0m-92.0m	0.064
92.0m-92.8m	0.322

FIGURE 6  
NAMEX EXPLORATIONS INC  
HUFFMAN LAKE PROJECT  
DRILL HOLES 1 and 2  
SECTION LOOKING WEST



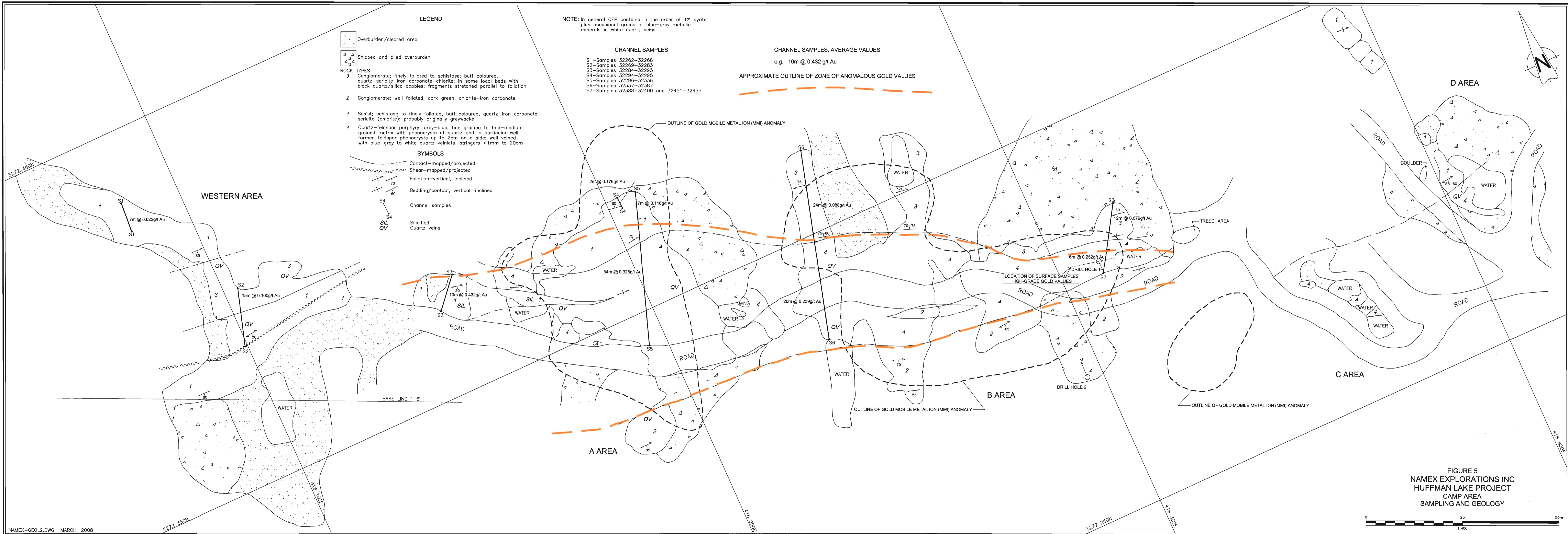


FIGURE 5  
NAMEX EXPLORATIONS INC  
HUFFMAN LAKE PROJECT  
CAMP AREA  
SAMPLING AND GEOLOGY