

Vertical Magnetic Gradient
(nT/m)

SURVEY SPECIFICATIONS
 Survey Flown: October 4, 2008
 Survey Type: Fixed Wing Magnetic, VLF-EM
 Survey Operations Base: Buttonville, Ontario
 Survey Line Azimuth: 346°/166°
 Control Line Azimuth: 076°/256°
 Survey Line Spacing: 75 metres
 Control Line Spacing: 750 metres
 Aircraft Mean Terrain Clearance: 99 metres
 Mean Ground Air Speed: 77.4 metres/sec

AIRCRAFT SPECIFICATIONS
 Aircraft Type: Piper Navajo PA-31
 Aircraft Registration: C-GKSA
 Aircraft Air Speed: 240 kts/hr

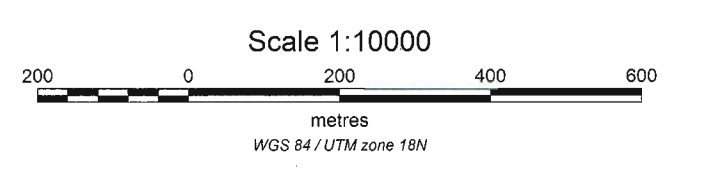
AIRBORNE INSTRUMENTATION
 Data Acquisition: Krom V S Instruments SDAS v2
 GPS Differential Receiver: Novatel ProPak LB-Plus L1/L2/L3 band
 GPS Real Time Correction: CDGPS
 Radar Altimeter: Bendix/King KRA-405
 Fluxgate Magnetometer: Bartington Mag-03MS
 VLF-EM: Totem 2A
 Navigation: Agnav Inc. LINAV

AIRBORNE MAGNETOMETER
 Magnetometer: Geometrics G822A Optically Pumped Cesium Vapour
 Magnetometer Sensitivity: +/- 0.005 nT
 Magnetometer Counter: Krom V S Instruments KMAG4
 Installation: Tail Stinger
 Sampling Rate: 10 Hz

VLF-EM STATIONS
 Line: NLK (24.8 KHz) Jim Creek, WA
 Ortho: NAA (24.0KHz) Cutler, ME

GROUND INSTRUMENTATION
 Data Acquisition: Krom V S Instruments SDAS v2
 Magnetometer: Scintrex CS-2 Cesium Vapour
 GPS Receiver: Novatel DL-4plus L1/L2 band
 Base Station Location: Buttonville Airport, Ontario

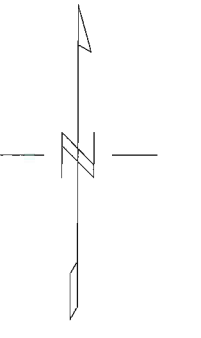
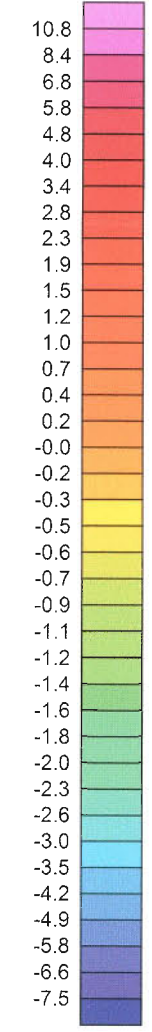
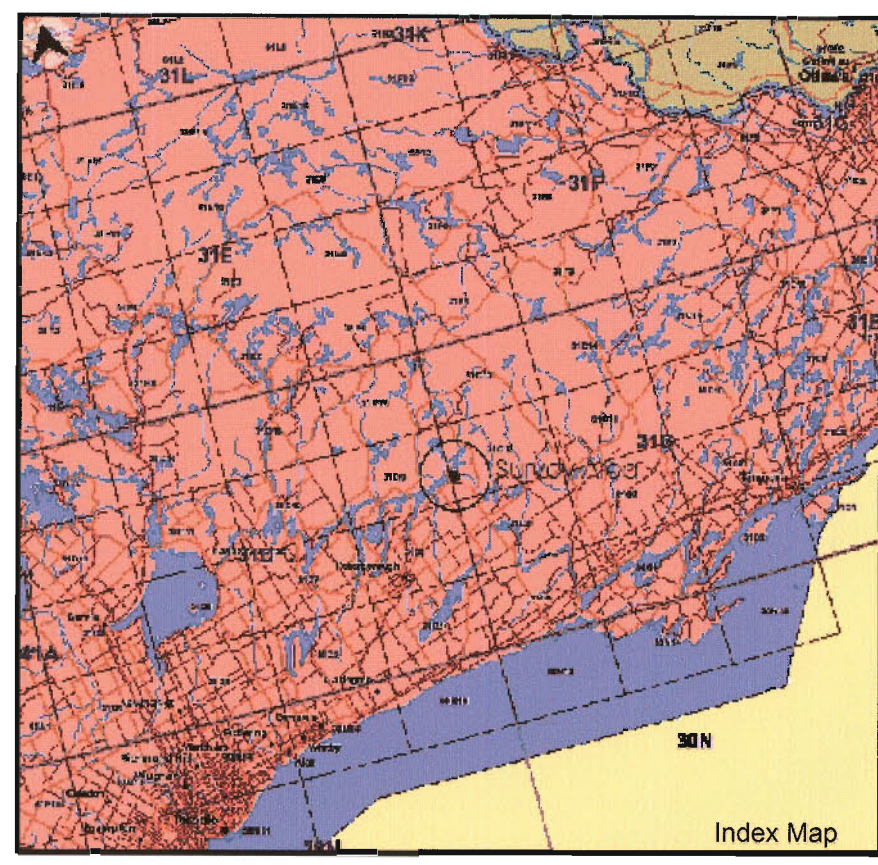
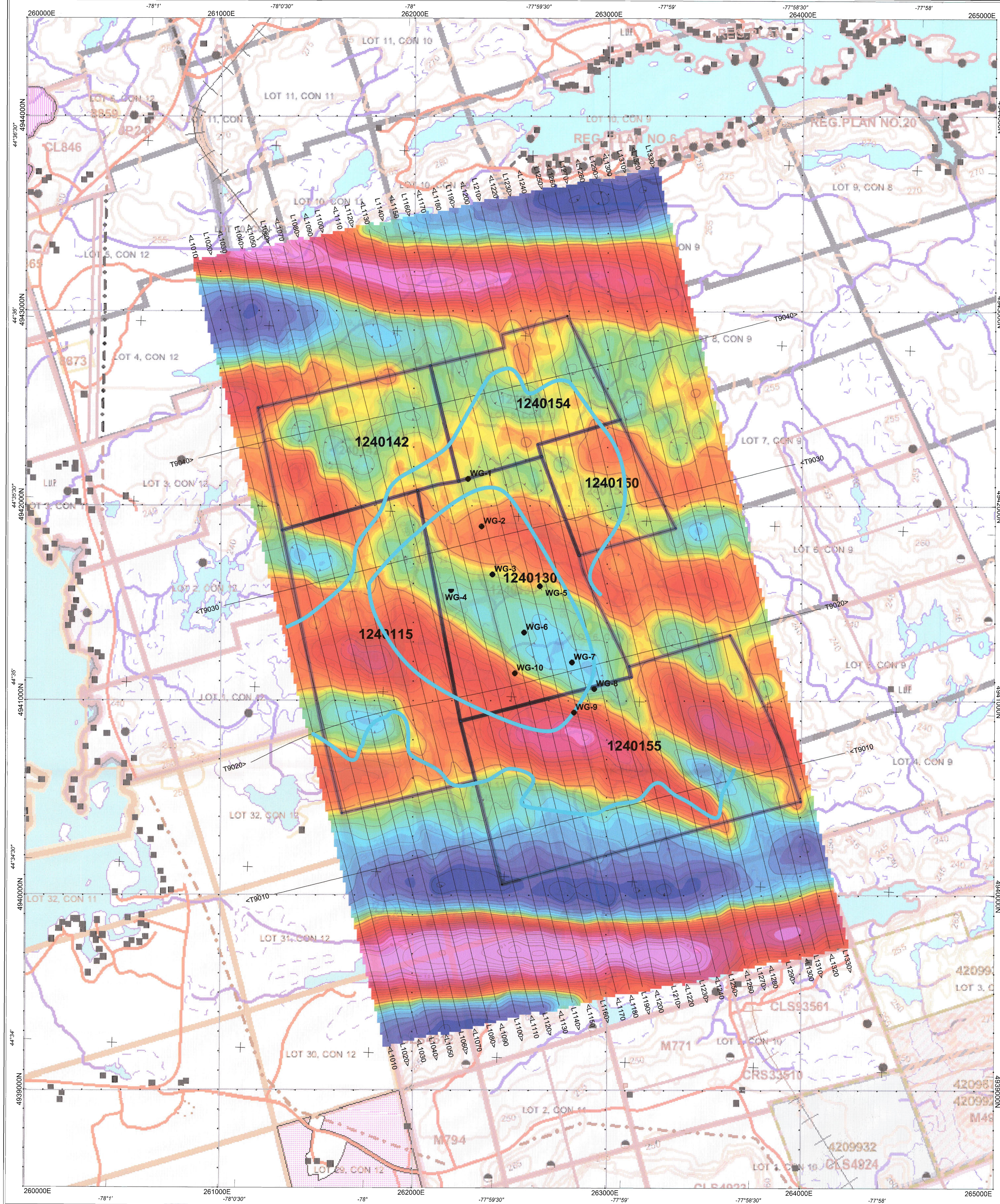
BASE DATA:
 Topography: Canadian Digital Elevation Data
 Drainage: Canadian National Hydro Network



TRIGAN RESOURCES INC.
 FIXED WING MAGNETIC AND VLF SURVEY
 WEST GABBRO PROPERTY
 HAVELOCK-BELMONT-METHUEN TOWNSHIPS
 PETERBOROUGH, ONTARIO
 NTS: 31D/09 AND 31C/12

CALCULATED VERTICAL MAGNETIC GRADIENT WITH GEOLOGY
 Contour Interval: 0.05, 0.5, 2 & 10 nT/m
 Flown by: TERRAQUEST LTD. (ref. B-290)
 Topographic base map copyright: Queen's Printer for Ontario

JVX LTD., ref. 8-100, November 2008



● WG-# Drill Hole
 — Lithological contact

SURVEY SPECIFICATIONS

Survey Flown: October 4, 2008
 Survey Type: Fixed Wing Magnetic, VLF-EM
 Survey Operations Base: Buttonville, Ontario
 Survey Line Azimuth: 346°/166°
 Control Line Azimuth: 076°/256°
 Survey Line Spacing: 75 metres
 Control Line Spacing: 750 metres
 Aircraft Mean Terrain Clearance: 99 metres
 Mean Ground Air Speed: 77.4 metres/sec

AIRCRAFT SPECIFICATIONS

Aircraft Type: Piper Navajo PA-31
 Aircraft Registration: C-GKSA
 Aircraft Air Speed: 240 knts/hr

AIRBORNE INSTRUMENTATION

Data Acquisition: Kroum V S Instruments SDAS v2
 GPS Differential Receiver: Novatel ProPak LB-Plus L1/L2/L band
 GPS Real Time Correction: CDGPS
 Radar Altimeter: Bendix/King KRA-405
 Fluxgate Magnetometer: Bartington Mag-03MS
 VLF-EM: Totem 2A
 Navigation: Agnav Inc. LINAV

AIRBORNE MAGNETOMETER

Magnetometer: Geometrics G822A Optically Pumped Cesium Vapour
 Magnetometer Sensitivity: +/- 0.005 nT
 Magnetometer Counter: Kroum V S Instruments KMAG4
 Installation: Tail Stinger
 Sampling Rate: 10 Hz

VLF-EM STATIONS

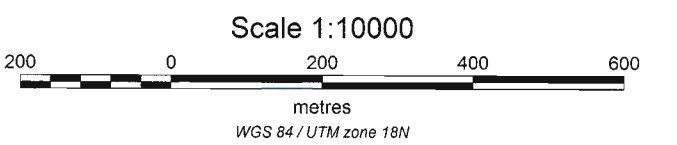
Line: NLK (24.8 KHz) Jim Creek, WA
 Ortho: NAA (24.0KHz) Cutler, ME

GROUND INSTRUMENTATION

Data Acquisition: Kroum V S Instruments SDAS v2
 Magnetometer: Scintrex CS-2 Cesium Vapour
 GPS Receiver: Novatel DL-4plus L1/L2 band
 Base Station Location: Buttonville Airport, Ontario

BASE DATA:

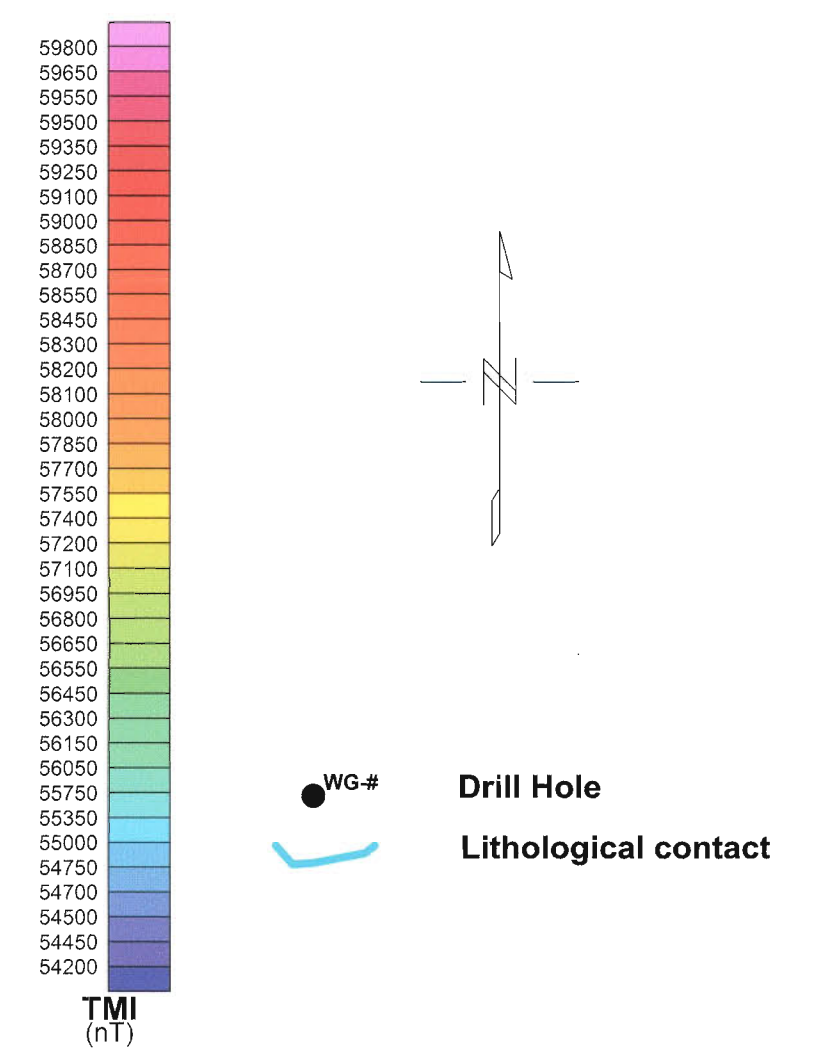
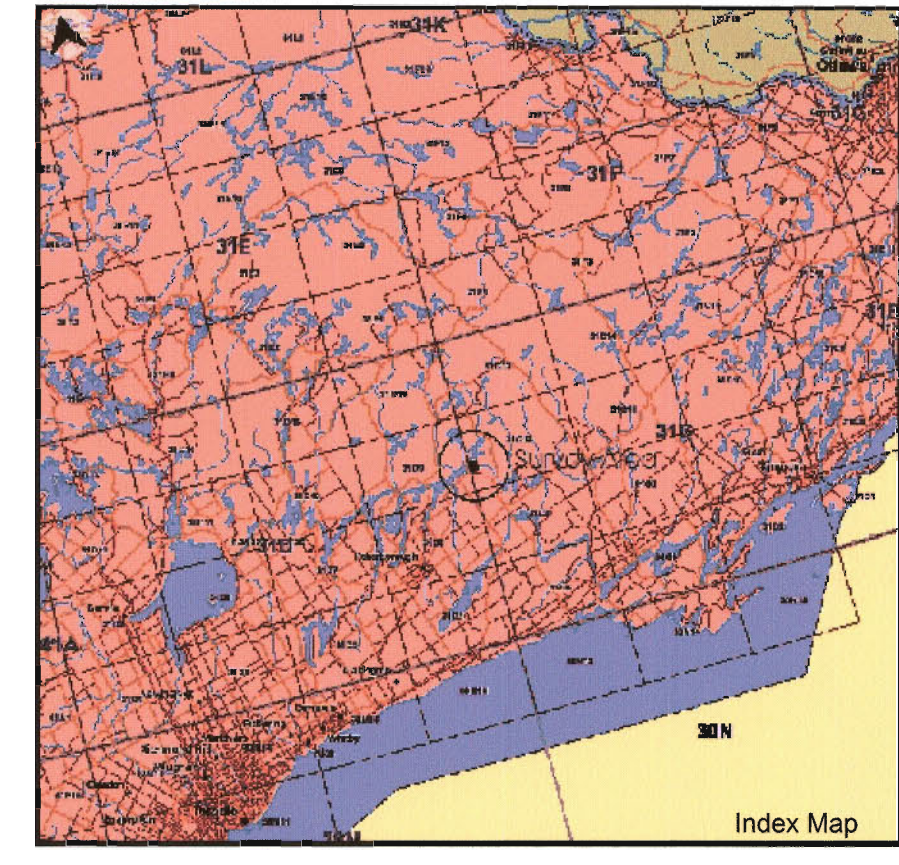
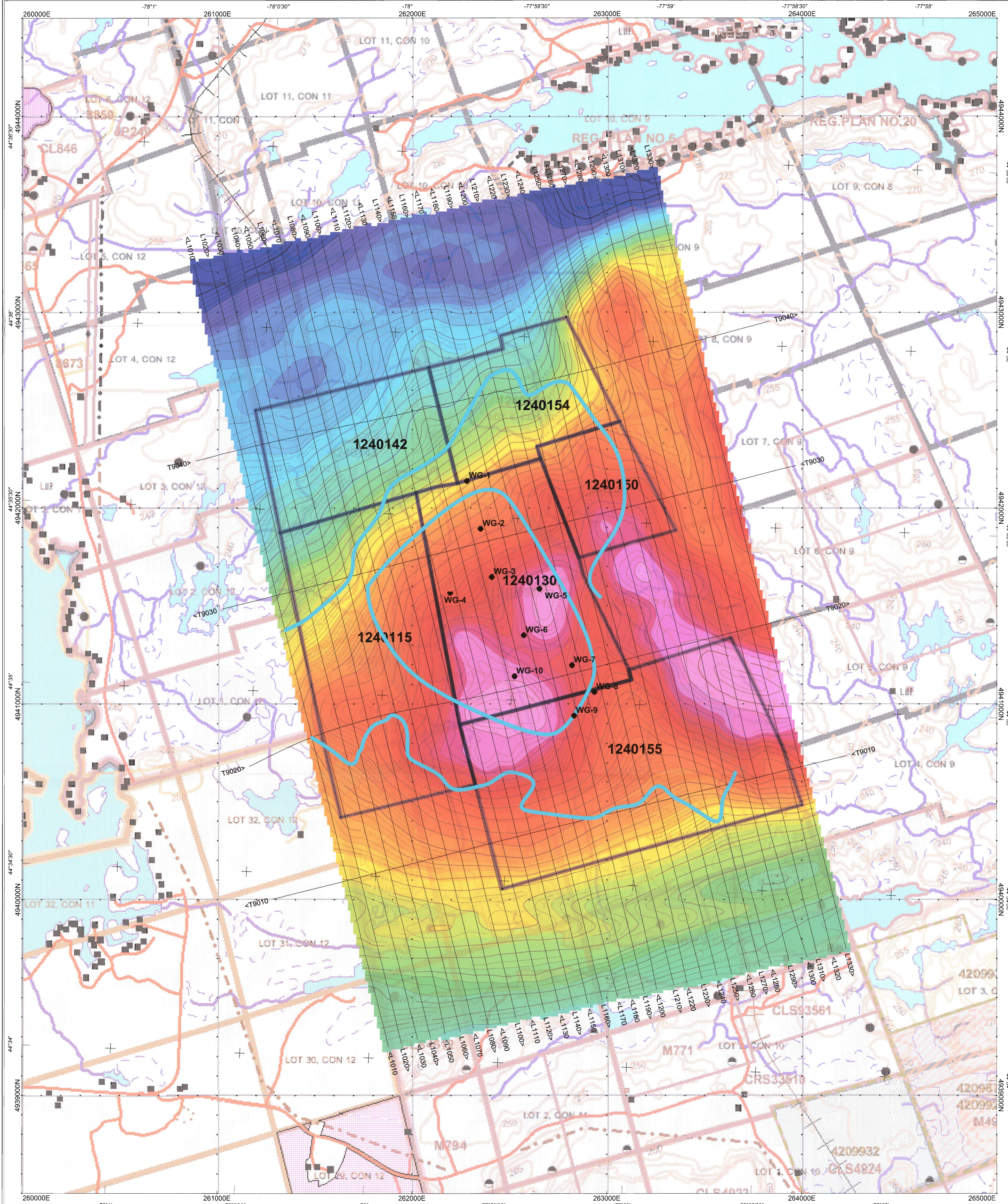
Topography: Canadian Digital Elevation Data
 Drainage: Canadian National Hydro Network



TRIGAN RESOURCES INC.
 FIXED WING MAGNETIC AND VLF SURVEY
 WEST GABRO PROPERTY
 HAVELOCK-BELMONT-METHUEN TOWNSHIPS
 PETERBOROUGH, ONTARIO
 NTS: 31D/09 AND 31C/12

**VLF-EM VERTICAL LINE TOTAL FIELD
 WITH QUADRATURE PROFILES AND GEOLOGY**
 Contour Interval: 1, 5 & 25 %
 VLF-EM Vertical Quadrature profile scale: 5%/cm
 Flown by: TERRAQUEST LTD. (ref. B-290)
 Topographic base map copyright: Queen's Printer for Ontario

JVX LTD., ref. 8-100, November 2008



SURVEY SPECIFICATIONS
 Survey Flown: October 4, 2008
 Survey Type: Fixed Wing Magnetic, VLF-EM
 Survey Operations Base: Buttonville, Ontario
 Survey Line Azimuth: 346°/166°
 Control Line Azimuth: 076°/256°
 Survey Line Spacing: 75 metres
 Control Line Spacing: 750 metres
 Aircraft Mean Terrain Clearance: 99 metres
 Mean Ground Air Speed: 77.4 metres/sec

AIRCRAFT SPECIFICATIONS
 Aircraft Type: Piper Navajo PA-31
 Aircraft Registration: C-GKSA
 Aircraft Air Speed: 240 kms/hr

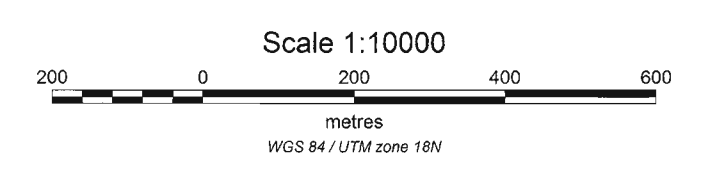
AIRBORNE INSTRUMENTATION
 Data Acquisition: Kroum V S Instruments SDAS v2
 GPS Differential Receiver: Novatel ProPak LB-Plus L1/L2/L band
 GPS Real Time Correction: CDGPS
 Radar Altimeter: Bendix/King KRA-405
 Fluxgate Magnetometer: Bartington Mag-03MS
 VLF-EM: Totem 2A
 Navigation: Agnav Inc. LINAV

AIRBORNE MAGNETOMETER
 Magnetometer: Geometrics G822A Optically Pumped Cesium Vapour
 Magnetometer Sensitivity: +/- 0.005 nT
 Magnetometer Counter: Kroum V S Instruments KMAG4
 Installation: Tail Stinger
 Sampling Rate: 10 Hz

VLF-EM STATIONS
 Line: NLK (24.8 KHz) Jim Creek, WA
 Ortho: NAA (24.0KHz) Cutler, ME

GROUND INSTRUMENTATION
 Data Acquisition: Kroum V S Instruments SDAS v2
 Magnetometer: Scintrex CS-2 Cesium Vapour
 GPS Receiver: Novatel DL-4plus L1/L2 band
 Base Station Location: Buttonville Airport, Ontario

BASE DATA:
 Topography: Canadian Digital Elevation Data
 Drainage: Canadian National Hydro Network



TRIGAN RESOURCES INC.
 FIXED WING MAGNETIC AND VLF SURVEY
 WEST GABRRO PROPERTY
 HAVELOCK-BELMONT-METHUEN TOWNSHIPS
 PETERBOROUGH, ONTARIO
 NTS: 31D/09 AND 31C/12

**TOTAL MAGNETIC INTENSITY
 WITH GEOLOGY**
 Contour Interval: 50, 200, 2000 & 10000 nT
 Flown by: TERRAQUEST LTD. (ref. B-290)
 Topographic base map copyright: Queen's Printer for Ontario

JVX LTD., ref. 8-100, November 2008