

Date / Time of Issue: Thu Sep 04 08:43:54 EDT 2008

TOWNSHIP / AREA **OSWAY** *MAP 1* **PLAN G-3243**
BRADY/CHARRON 2007-2008 CLAIM LOCATION - KEY MAP

ADMINISTRATIVE DISTRICTS / DIVISIONS

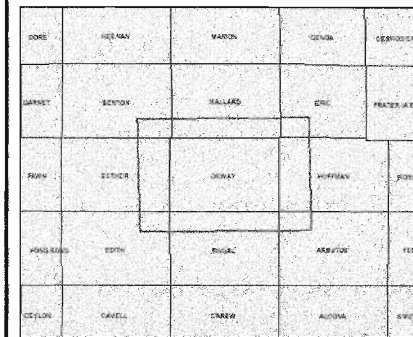
Mining Division Porcupine
Land Titles/Registry Division SUDBURY
Ministry of Natural Resources District CHAPLEAU

TOPOGRAPHIC

- Administrative Boundaries
- Township
- Concession, Lot
- Provincial Park
- Indian Reserve
- Clim. PA & Pile
- Contour
- Mine Shaft
- Mine Headframe
- Railway
- Road
- Trail
- Natural Gas Pipeline
- Utilities
- Tower

Land Tenure

- Freshwater Patent
 - Surface And Mining Rights
 - Surface Rights Only
 - Mining Rights Only
- Leasehold Patent
 - Surface And Mining Rights
 - Surface Rights Only
 - Mining Rights Only
- Licence of Occupation
 - Uses Not Specified
 - Surface And Mining Rights
 - Surface Rights Only
 - Mining Rights Only
- Land Use Permit
- Order In Council (Not open for staking)
- Water Power Lease Agreement
- Mining Claim
- Feld Only Mining Claims



LAND TENURE WITHDRAWALS

1234 Arson Withdrawal from Disposition

1234567 Mining Act Withdrawal Types

W's Surface And Mining Rights Withdrawal

W's Surface Rights Only Withdrawal

W's Mining Rights Only Withdrawal

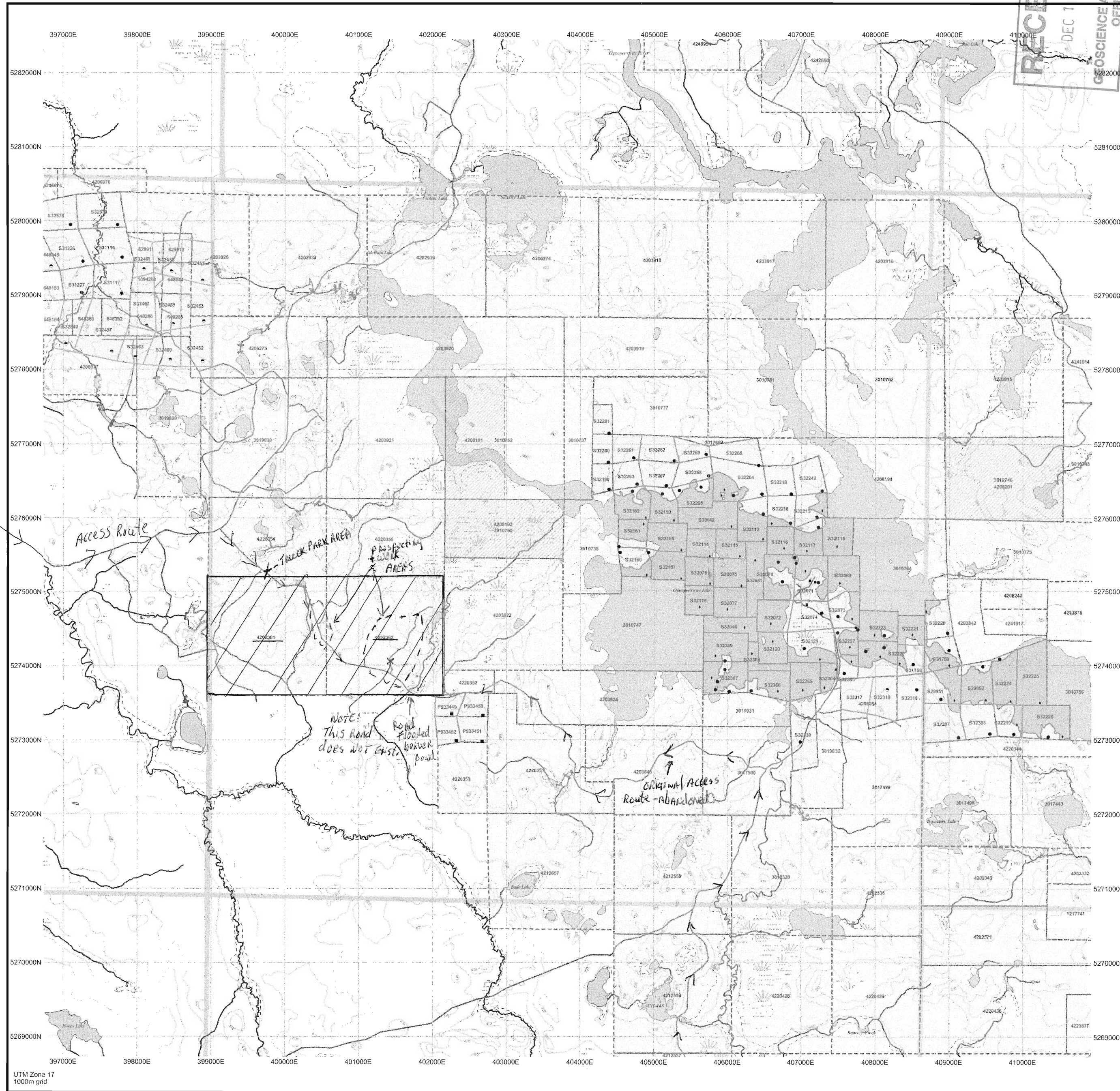
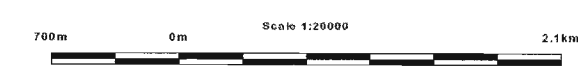
Order In Council Withdrawal Types

W's Surface And Mining Rights Withdrawal

W's Surface Rights Only Withdrawal

W's Mining Rights Only Withdrawal

IMPORTANT NOTICES



To Ramsey Road

Those wishing to stake mining claims should consult with the Provincial Mining Recorder's Office of the Ministry of Northern Development and Mines for additional information on the status of the lands shown herein. This map is not intended for navigation, survey, or land title determination purposes as the information shown on this map is compiled from various sources. Completeness and accuracy are not guaranteed. Additional information may also be obtained through the local Land Titles or Registry Office, or the Ministry of Natural Resources.

The information shown is derived from digital data available in the Provincial Mining Recorder's Office at the time of downloading from the Ministry of Northern Development and Mines web site.

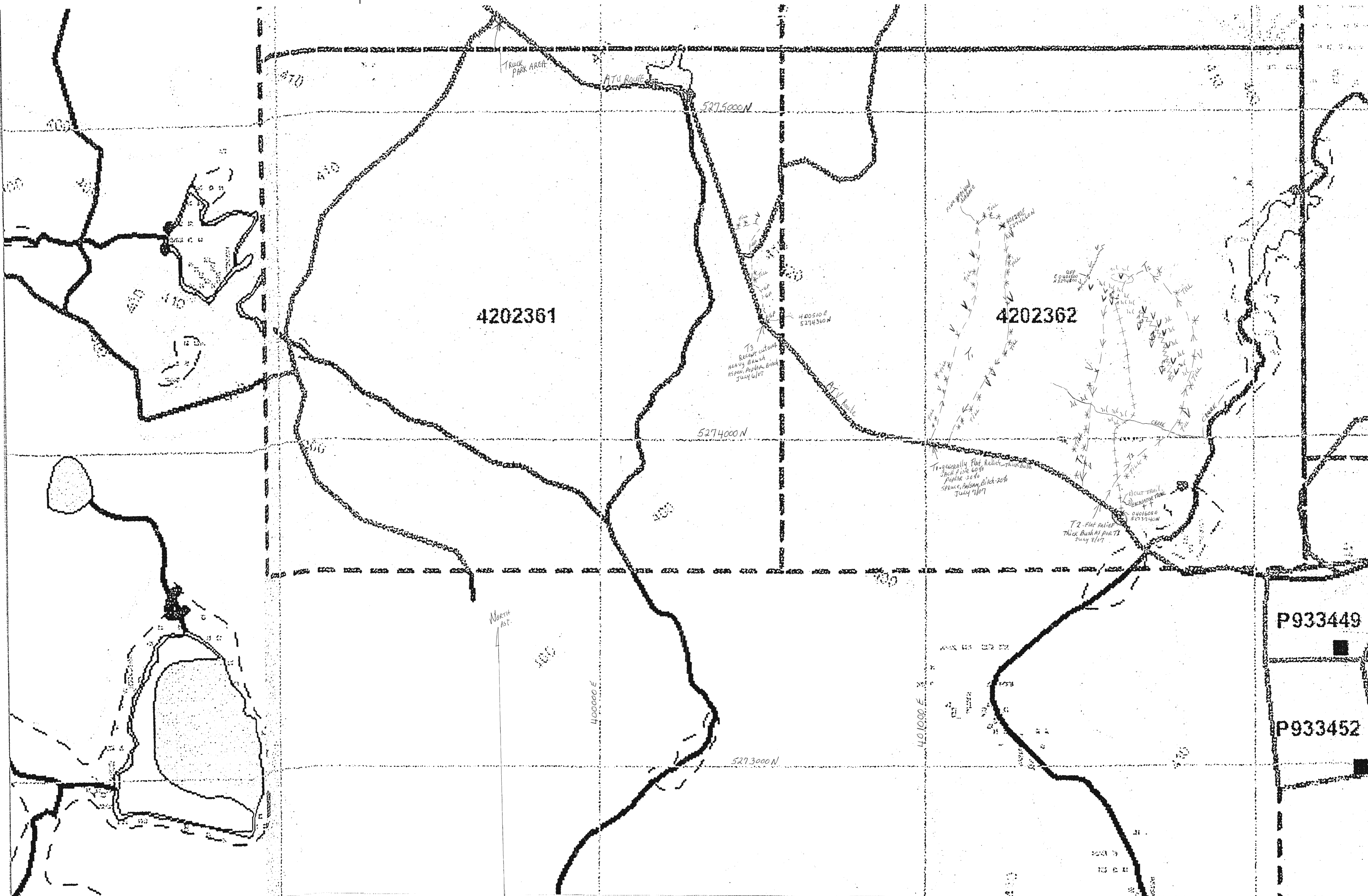
General Information and Limitations

Contact Information:
Provincial Mining Recorder's Office
11801 Green Millar Center 933 Ramsey Lake Road
Sudbury ON P3E 6B5
Home Page: www.mdm.gov.on.ca/INDUSTRY/MINES/LANDS/mnrmap.htm

Toll Free: 1-800-387-4141
Tel: (807) 415-5645 ext. 5149 (Provisional UTM & Algeps)
Fax: 1 (877) 570-1444

Map Datum: NAD 83
Topographic Data Source: Land Information Ontario
Mining Land Tenure Source: Provincial Mining Recorder's Office

This map may not show unregistered land tenure and interests in land including certain patents, leases, easements, right of ways, flooding rights, booms, or other forms of disposition of rights and interests from the Crown. Also contain land tenure and land uses that restrict or prohibit free entry to staked mining claims may not be illustrated.



Osway Twp: From PLAN G-32 43 - UTM NAD 83 - BRNOY/CHARON 2007-2008 MAP 2

0 50m 100m

- + - MINERAL & EXCAVATOR WORK LOCATIONS: see ORNL MAPS AREAS 1-5
 - X - GPS LOCATION [UTM NAD 83 40N E 17]
 - XI - NARROW BAND OF QUARTZ FELDSPAR PORPHYRY
 - T1, T2 & T3 - - - - -
 - T4 - - - - -
 - * - TILL - Boulders, SAND & GRAVEL
 - ~L - Swamps
- + + + discovered very old
blasted fractures, debris filled and
very oxidized mineralization - mostly
massive Pyrochlore

RECEIVED
DEC 15 2008
GEOCHEMICAL ASSESSMENT
OFFICE

