

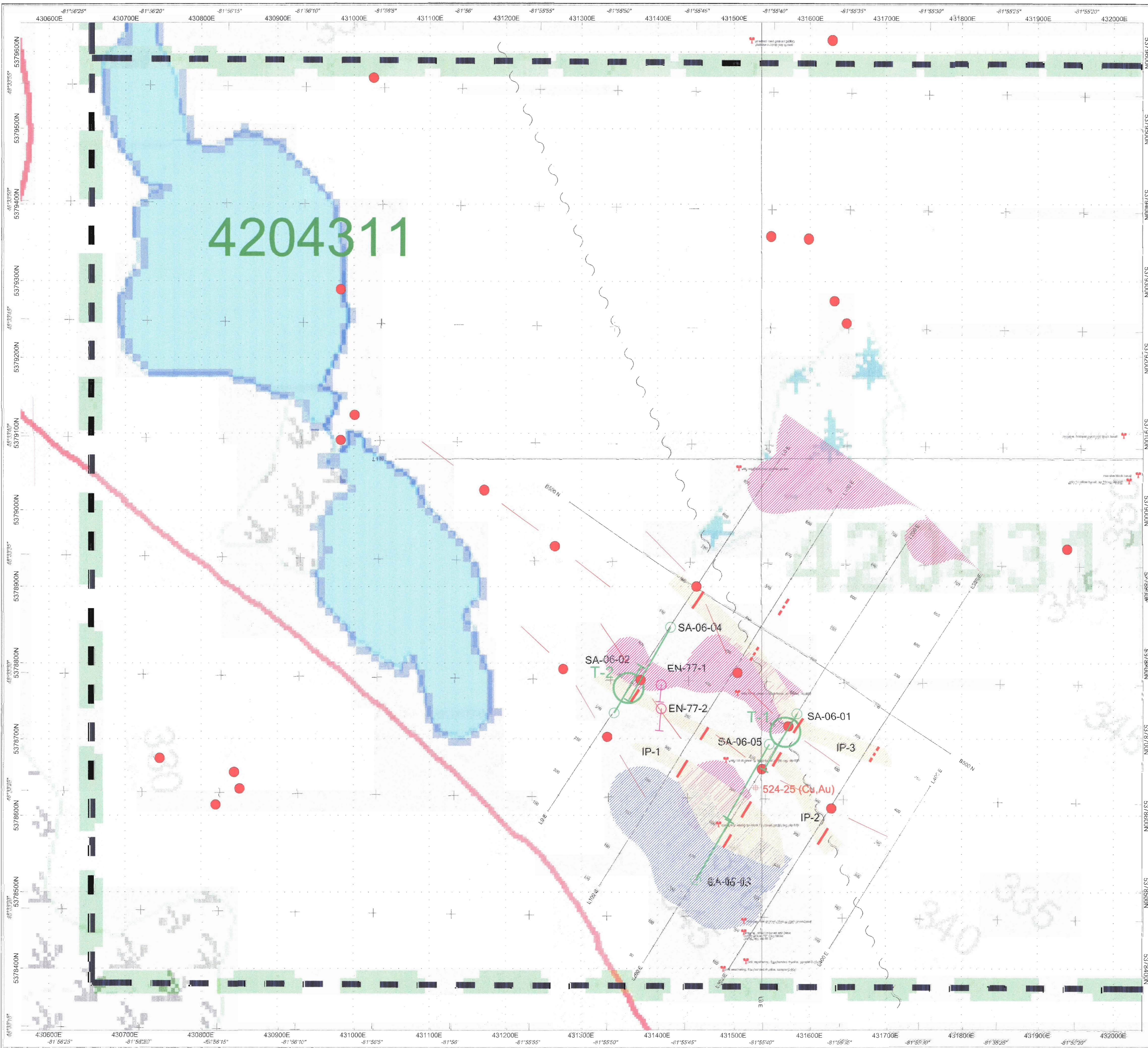
Plate Sa-4

Laurion Mineral Exploration Inc.

**SANTRAP GRID, ENID TWP.
TIMMINS - ONTARIO
NTS: 42 A/12**

TOTAL MAGNETIC INTENSITY MAP
Contour Interval: 5, 20, 100 & 500 nT
Base removed: 57000 nT
Value posted: Right, Stations posted: Left
Instrument: GEM GSM 19

JVX LTD., ref. no. 6-68, July 2007
Topographic base map copyright: Queen's Printer for Ontario
Topographic base map copyright: TEMBEC



LEGEND

- >20 mV/V strong chargeability
- 10-20 mV/V moderate chargeability
- Interpreted Aerotem Conductor Axis (Johnson, 2006)
- Aerotem Conductor
- T-1 Exploration Target
- 2006 Drill Hole
- Historical Drill Hole
- Magnetic High (> 57500 nT)
- Resistivity High (> 10000 Ohm-m)
- ✂ Geological Prospecting
- ✂ 524-25 (Cu,Au) Samples
- IP Zone
- ~ Interpreted Fault

Sample #	UTM Easting	UTM Northing	Type of sample	Asst. (ppm)	Fe (ppm)	Pb (ppm)	Cu (ppm)	Au (ppm)
524	431528	5378635	grab	0.045	0.006	0.007	593	24
525	431528	5378635	grab	0.077	0.007	0.005	337	10

Reference: Johnson, J.M. (2006) Preliminary Comments - Aerotem Survey - Enid Massey Project - Timmins Area - Laurentian Gold (E-Suite) Mine, Exploration Inc. - August 2006 - Unpublished Company Report.

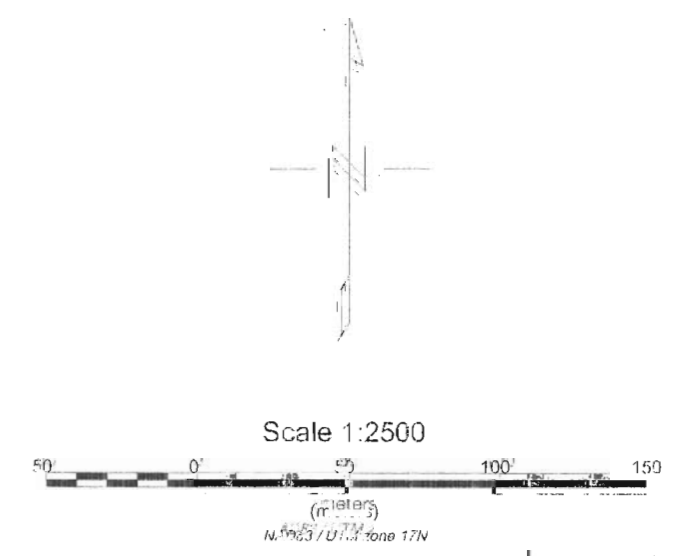


Plate Sa-1

Laurion Mineral Exploration Inc.
 SANTRAP GRID, ENID TWP.
 TIMMINS - ONTARIO
 NTS: 42 A/12

COMPILATION MAP

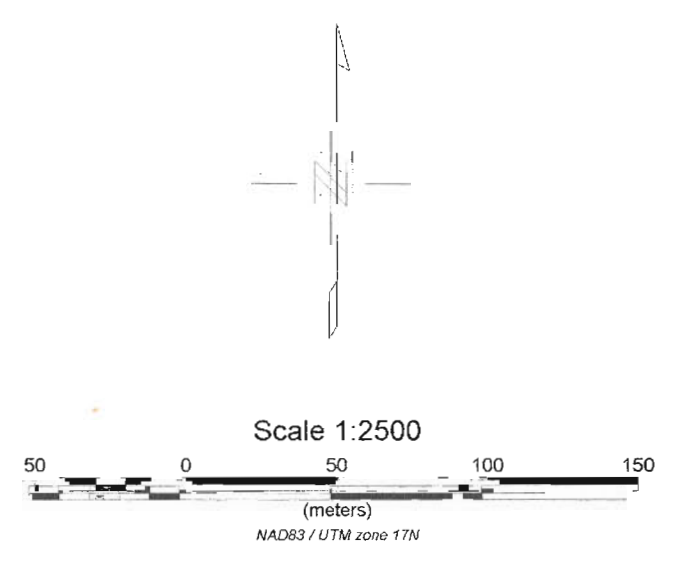
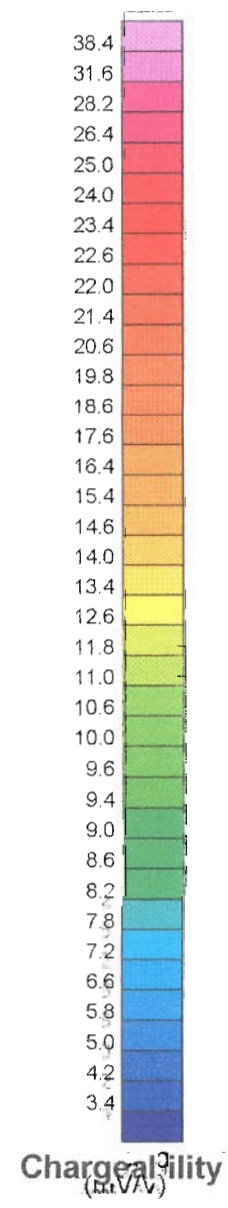
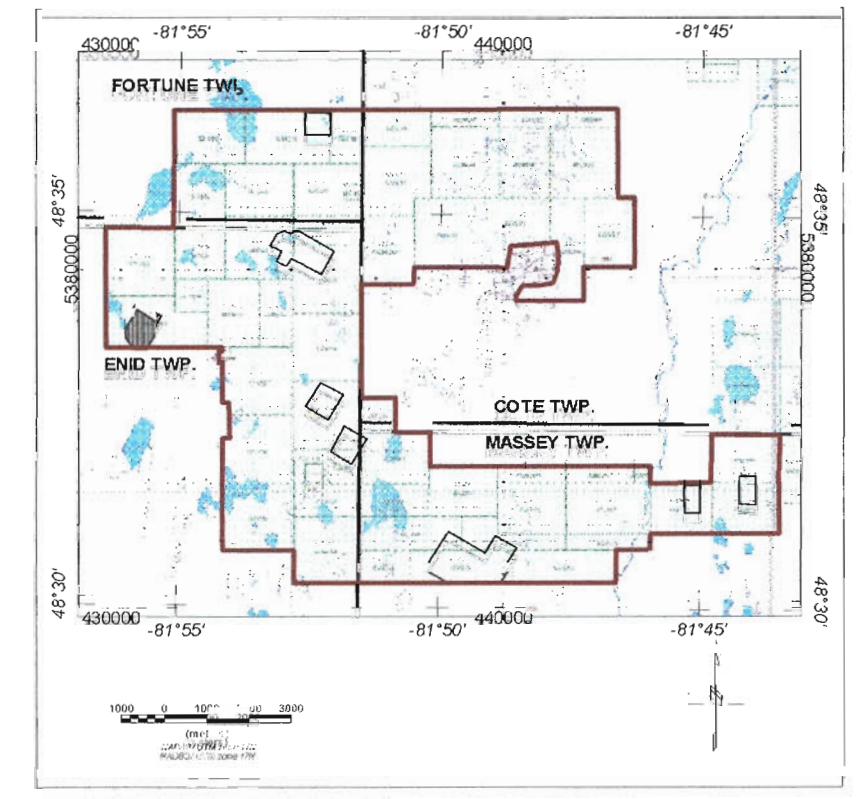
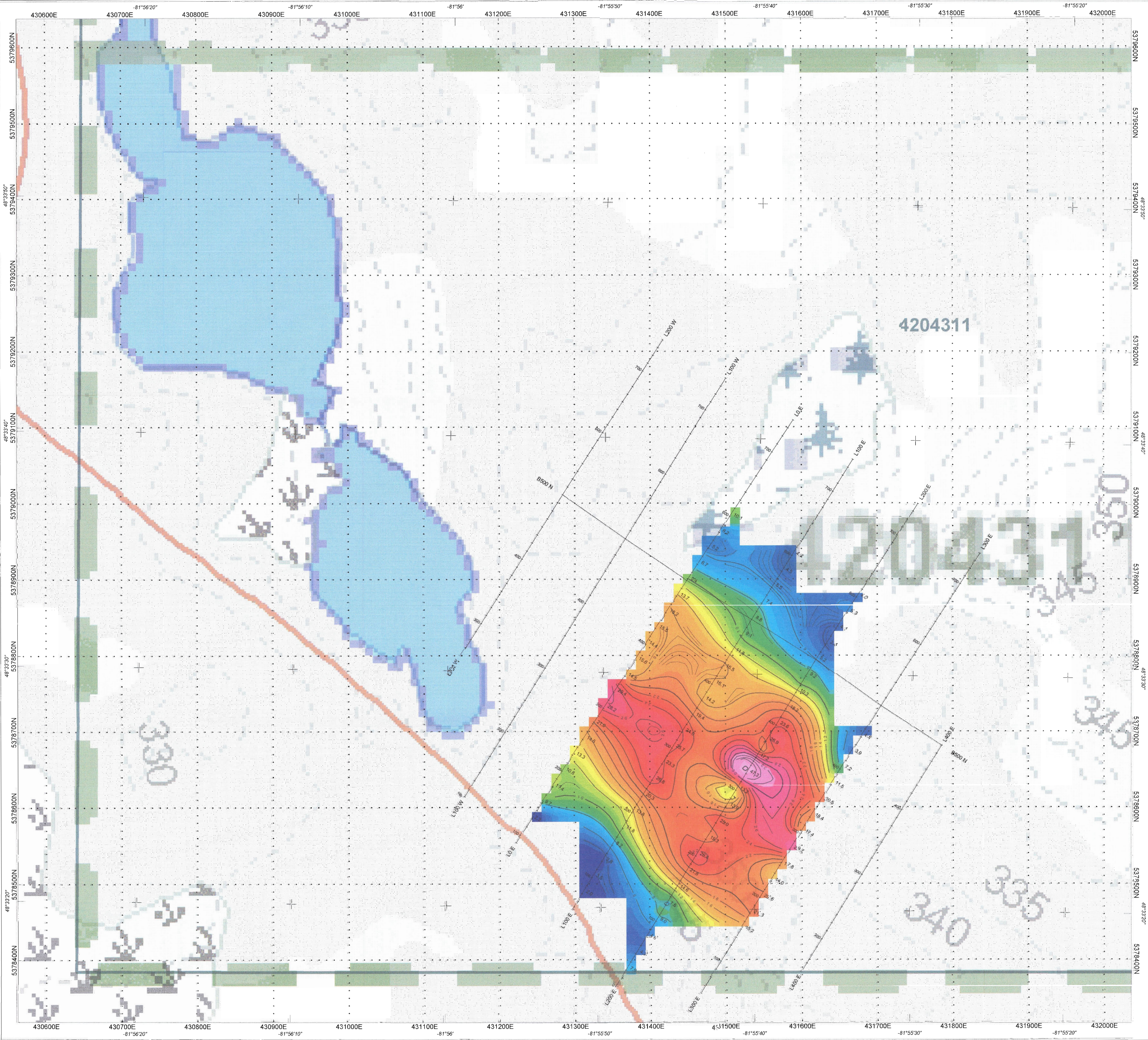


Plate Sa-2

LAURION MINERAL EXPLORATION INC.

SPECTRAL IP / RESISTIVITY SURVEY
SAINT RAPHAEL - ENID TWP.
TIMMINS - ONTARIO
NTS: 4: A/12

CHARGEABILITY (n=2)
 Contour Interval: 0.2, 2 & 10 mV/V
 Value posted: Right, Stations posted: Left
 Array: Pole Dipole, a=25 m
 Inst: Scintrex IPR12 Rx(2 sec) & IPC-7 Tx(2 sec)

JVX LTD. ref. no. 638, June 2007
 Topographic base map copyright: Crown's Printer for Ontario
 Topographic base map copyright: TEMBEC

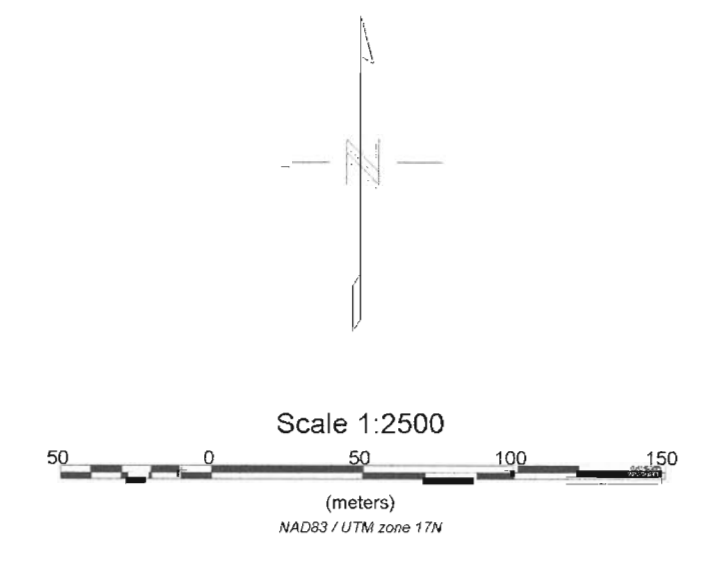
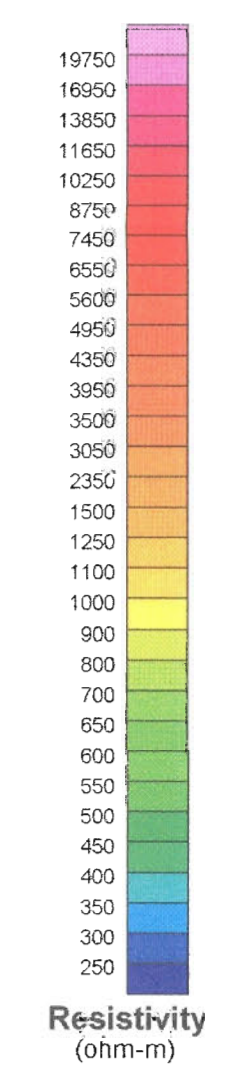
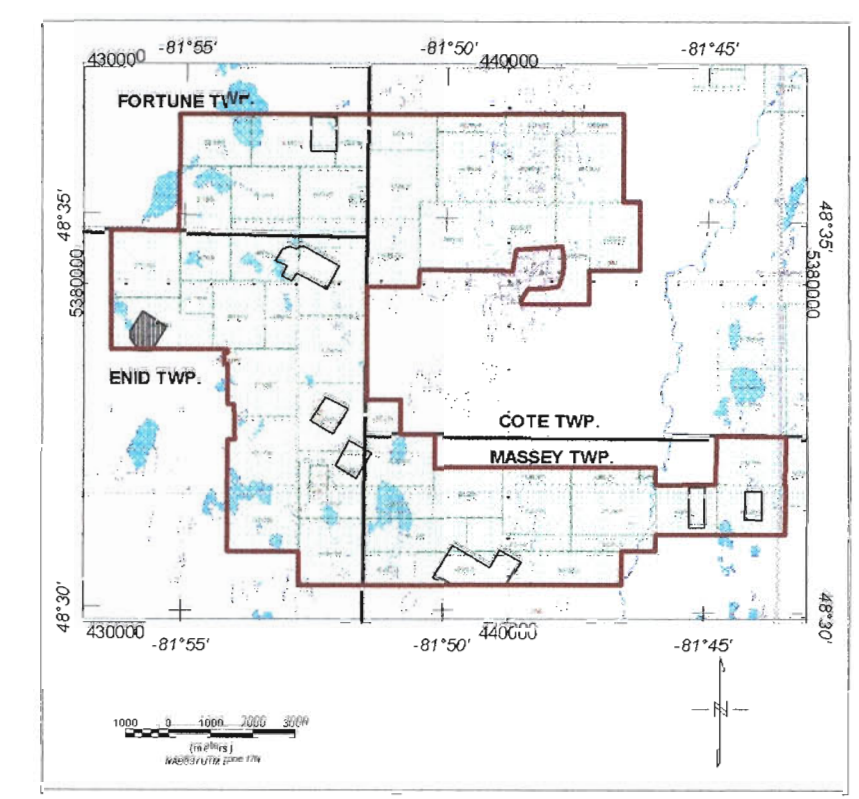
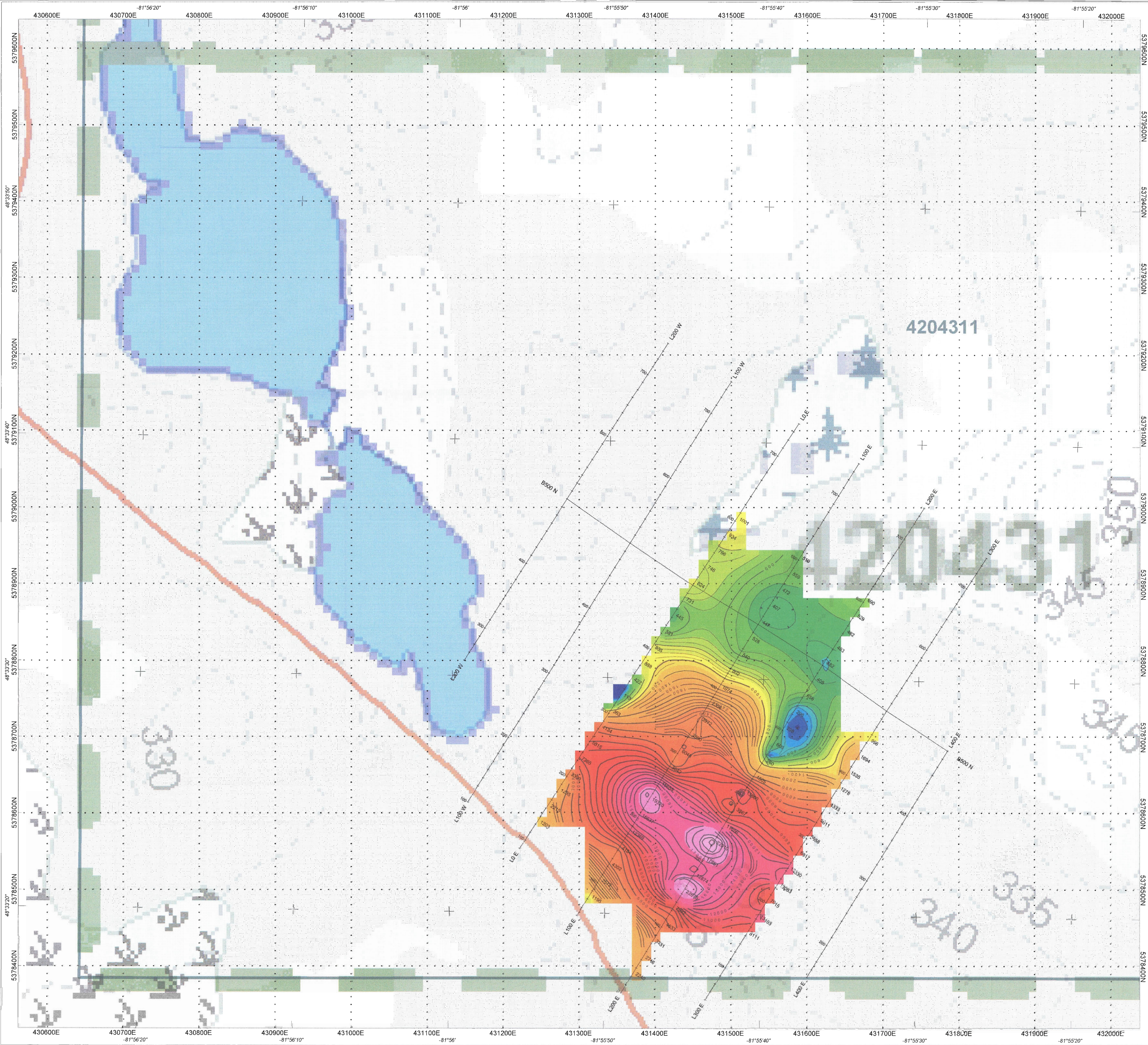


Plate Sa-3

LAURION MINERAL EXPLORATION INC.

SPECTRAL IP / RESISTIVITY SURVEY
SANTRAP GRID - END TWP.
TIMMINS - ONTARIO
NTS: 42 A/12

RESISTIVITY (n=2)
 Contour Interval: 50, 200 & 1000 ohm-m
 Value posted: Right, Stations posted: Left
 Array: Pole Dipole, a=25 m
 Inst: Scintrex IPR12 Rx(2 sec) & IPC-7 Tx(2 sec)

JVX LTD. ref. no. 6-08, June 2007
 Topographic base map copyright: Queen's Printer for Ontario
 Topographic base map copyright: TEMBEC

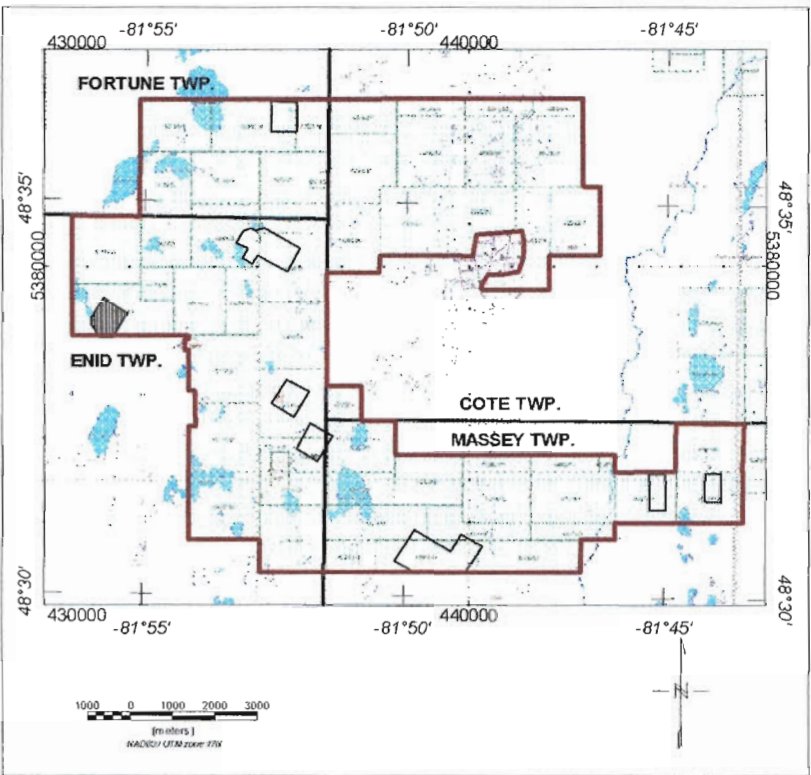
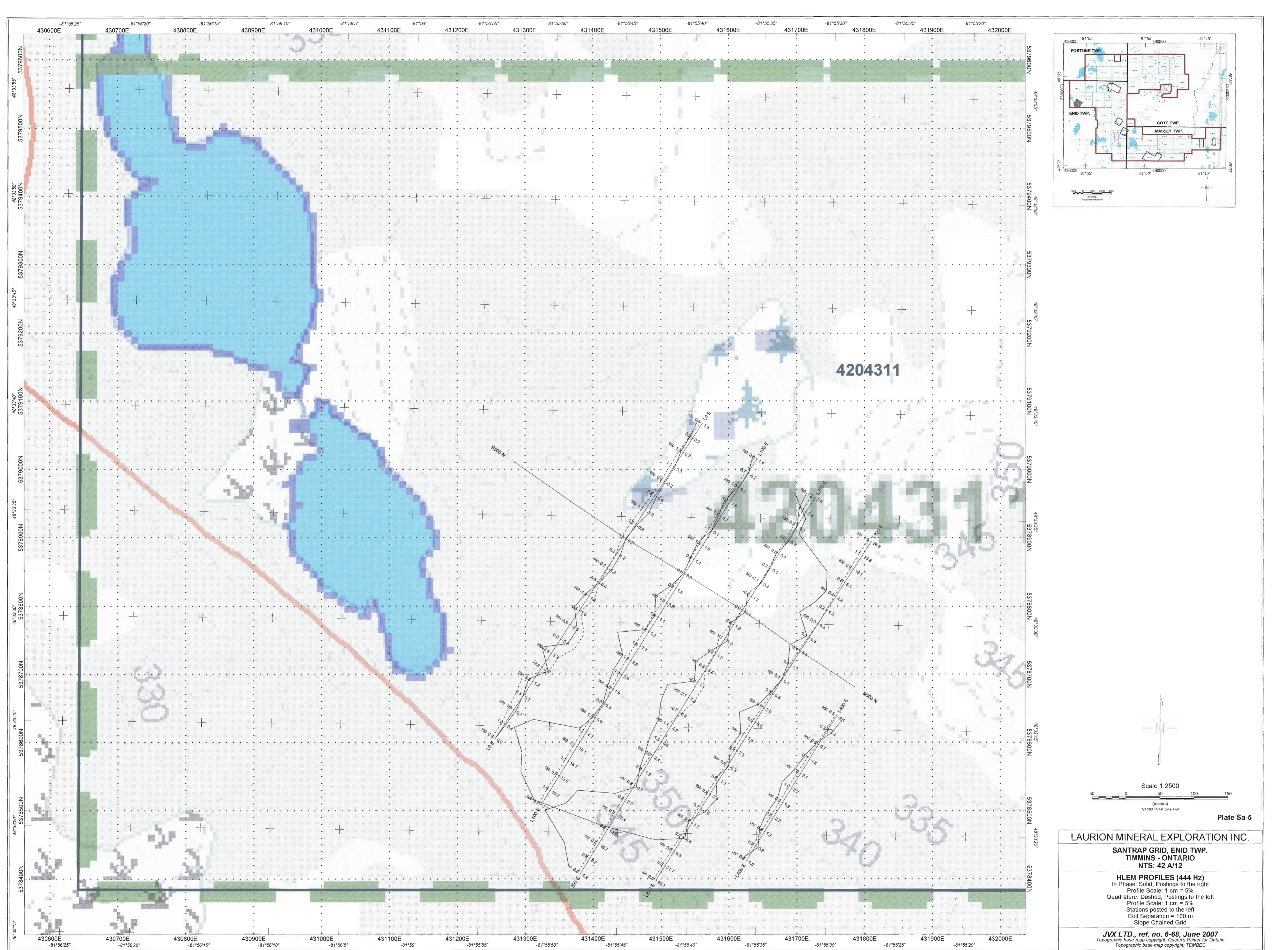


Plate Sa-5

Laurion Mineral Exploration Inc.

SANTRAP GRID, ENID TWP.
TIMMINS - ONTARIO
NTS: 42 A/12

HLEM PROFILES (444 Hz)
 In Phase: Solid, Postings to the right
 Profile Scale: 1 cm = 5%
 Quadrature: Dashed, Postings to the left
 Profile Scale: 1 cm = 5%
 Stations posted to the left
 Coil Separation = 100 m
 Slope Chained Grid

JVX LTD., ref. no. 6-68, June 2007
 Topographic base map copyright: Queen's Printer for Ontario
 Topographic base map copyright: TEMBEC

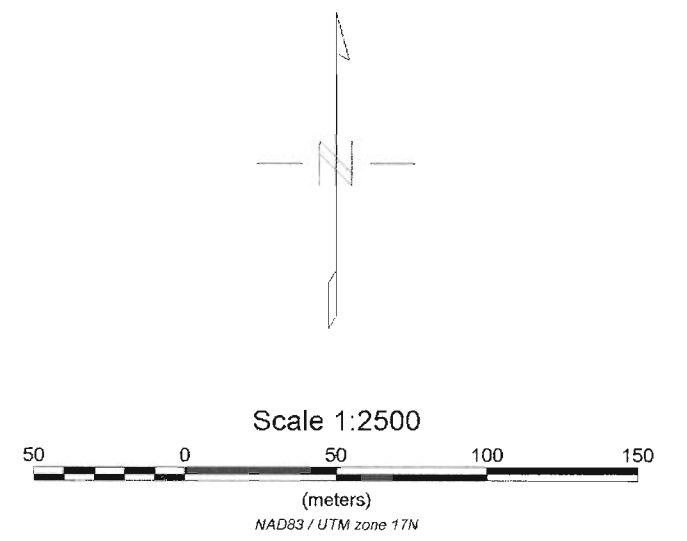
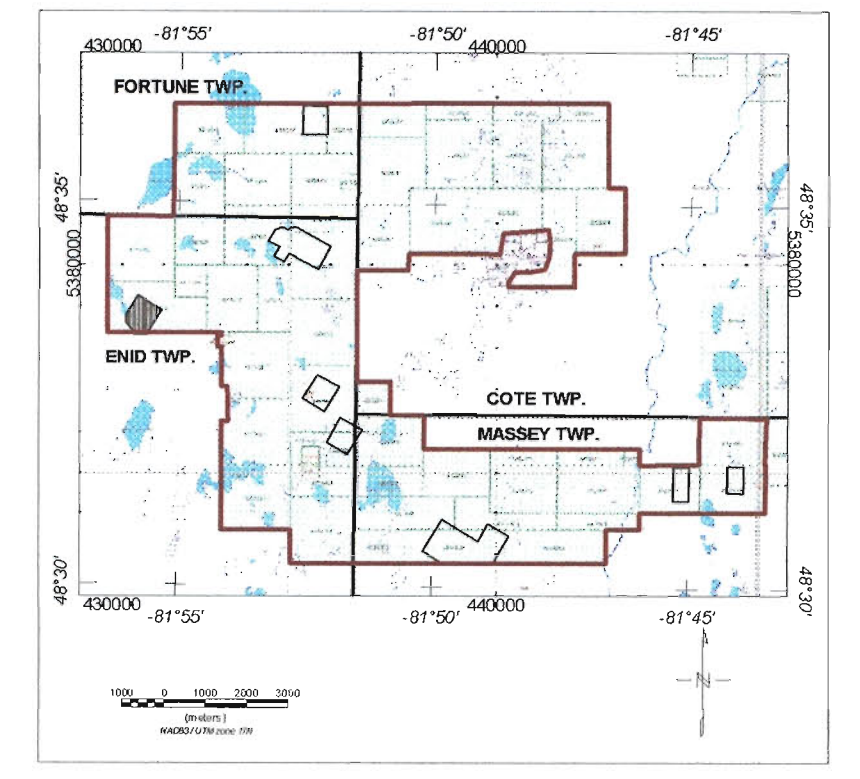
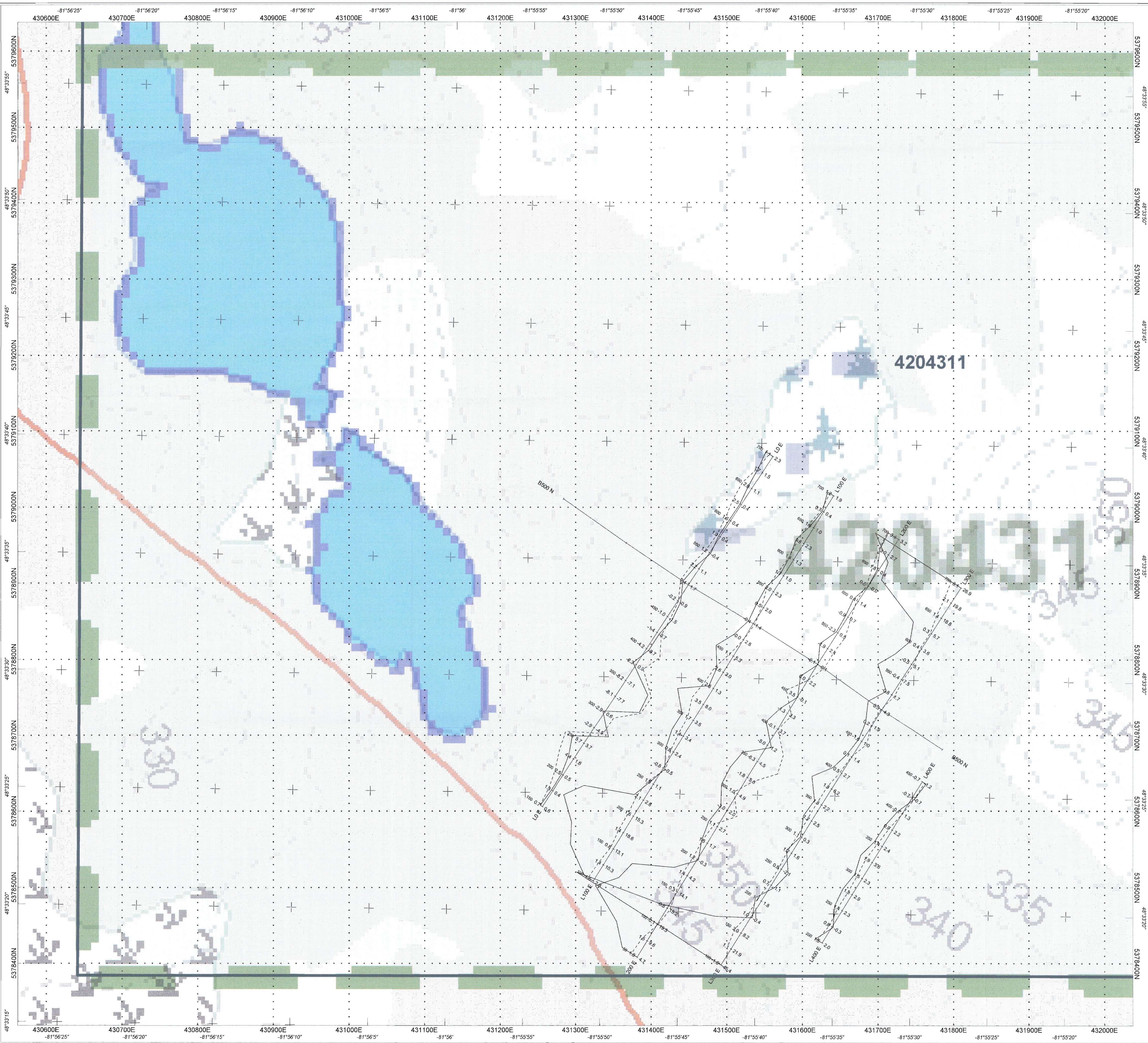


Plate Sa-6

Laurion Mineral Exploration Inc.

**SANTRAP GRID, ENID TWP.
TIMMINS - ONTARIO
NTS: 42 A/12**

HLEM PROFILES (1777 Hz)
In Phase: Solid, Postings to the right
Profile Scale: 1 cm = 5%
Quadrature: Dashed, Postings to the left
Profile Scale: 1 cm = 5%
Stations posted to the left
Coil Separation = 100 m
Slope Chained Grid

JVX LTD., ref. no. 6-68, June 2007
Topographic base map copyright: Queen's Printer for Ontario
Topographic base map copyright: TEMBEC

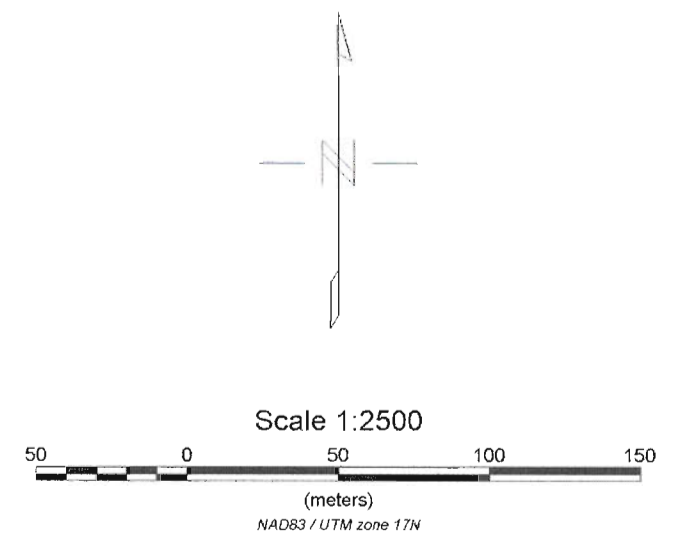
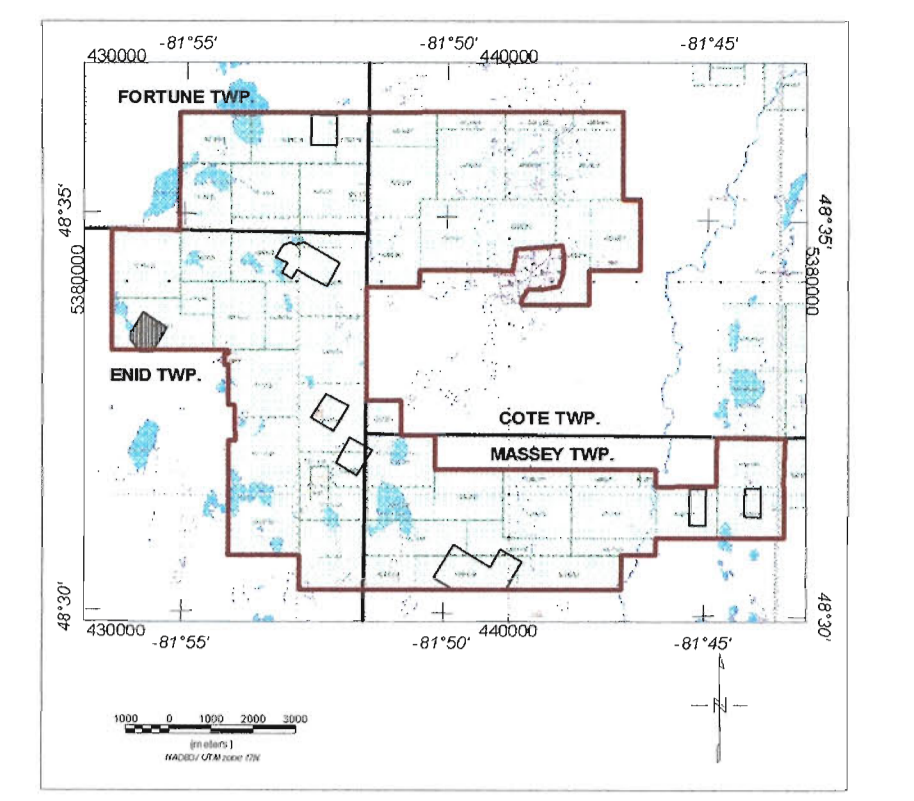
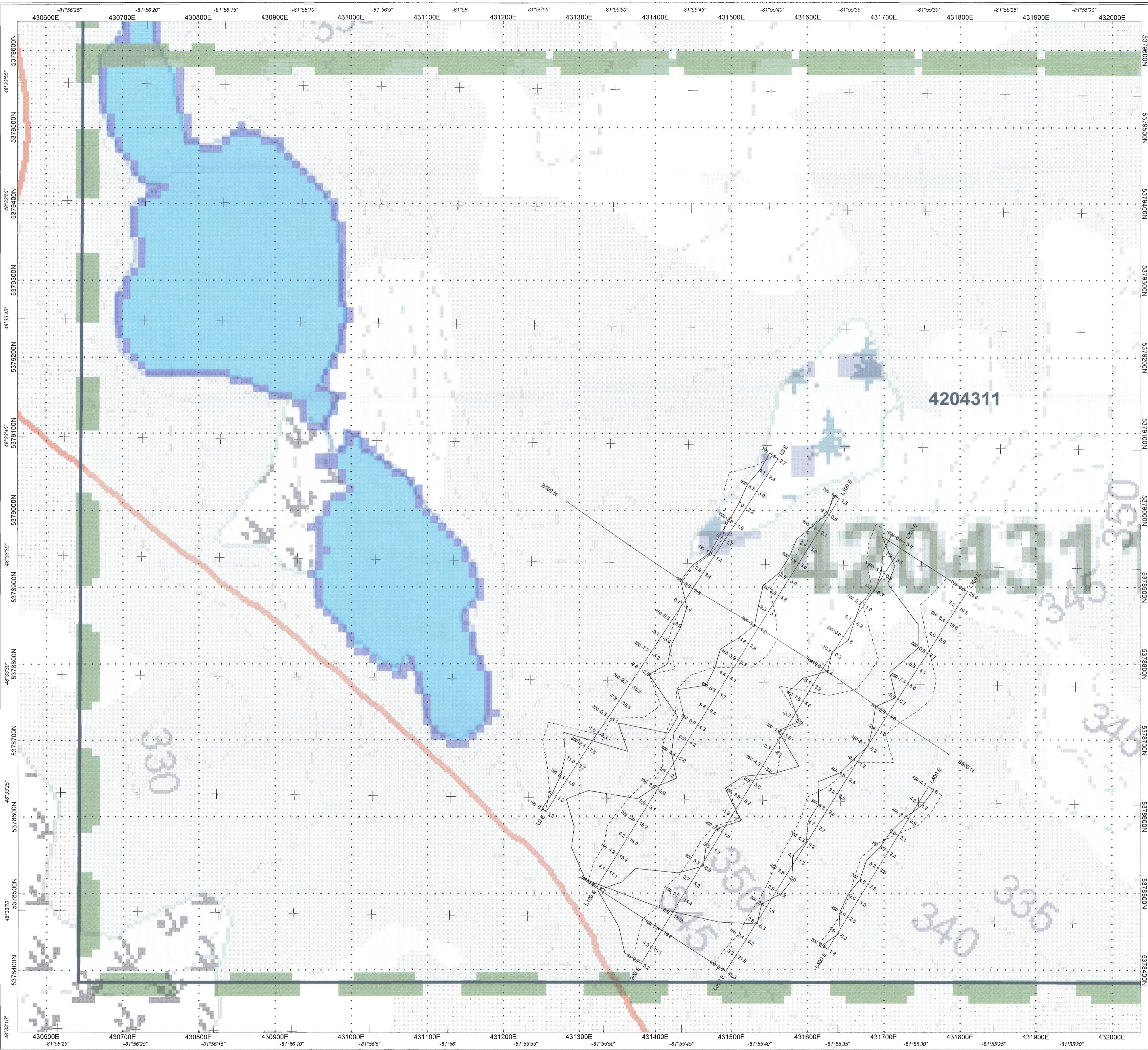


Plate Sa-7

Laurion Mineral Exploration Inc.

SANTRAP GRID, ENID TWP.
TIMMINS - ONTARIO
NTS: 42 A/12

HLEM PROFILES (7111 Hz)
 In Phase: Solid, Postings to the right
 Profile Scale: 1 cm = 5%
 Quadrature: Dashed, Postings to the left
 Profile Scale: 1 cm = 5%
 Stations posted to the left
 Coil Separation = 100 m
 Slope Chained Grid

JVX LTD., ref. no. 6-68, June 2007
 Topographic base map copyright: Queen's Printer for Ontario
 Topographic base map copyright: TEMBEC

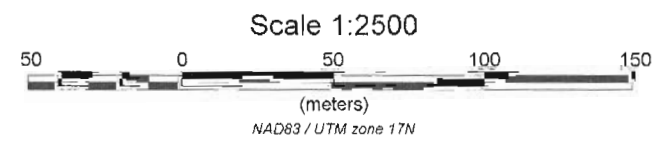
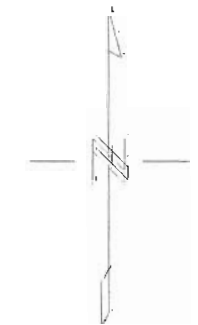
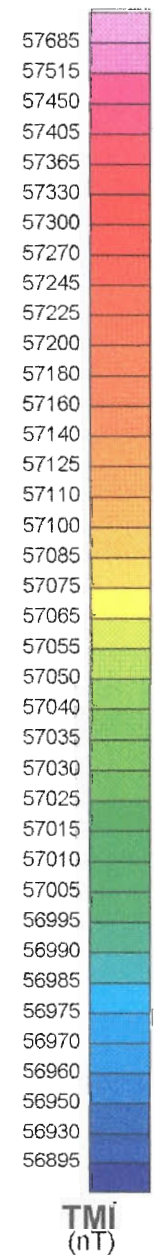
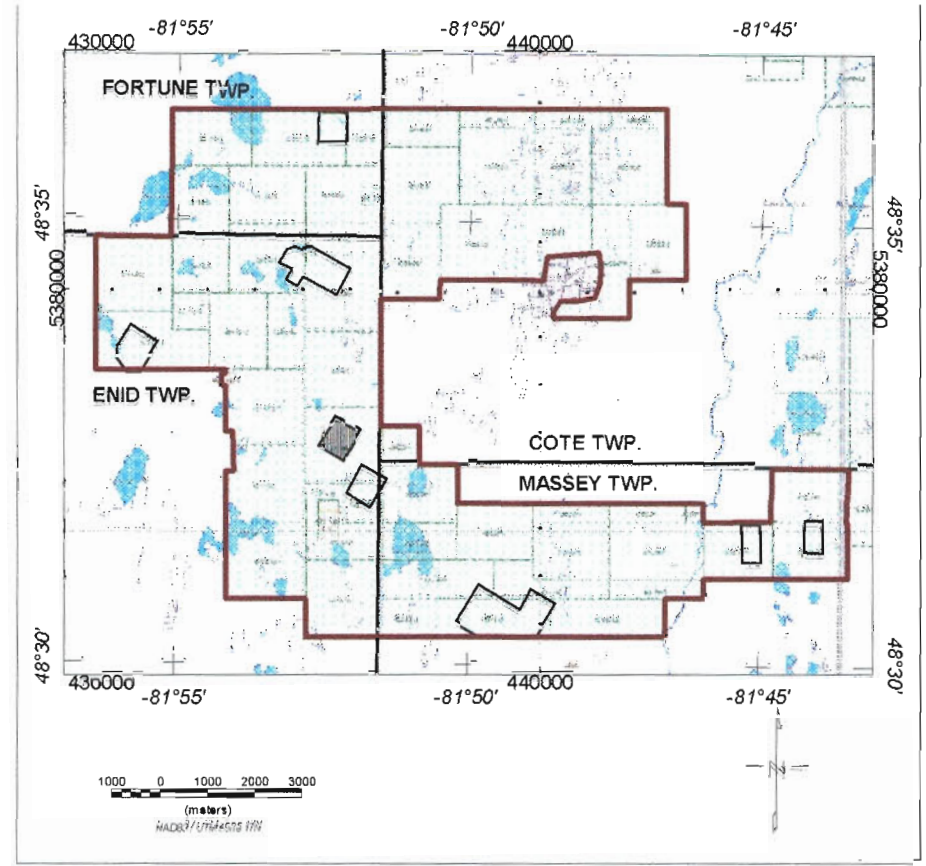
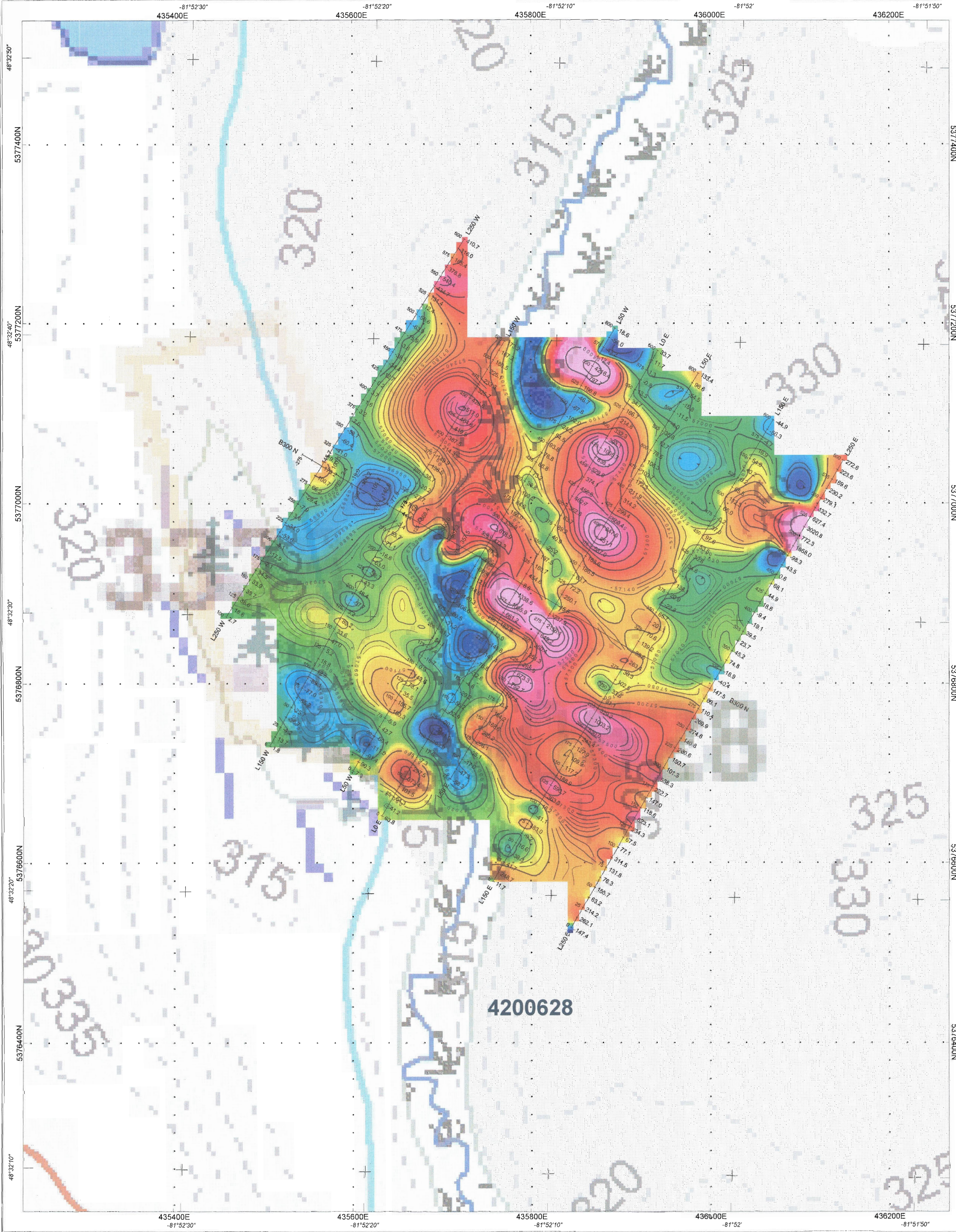


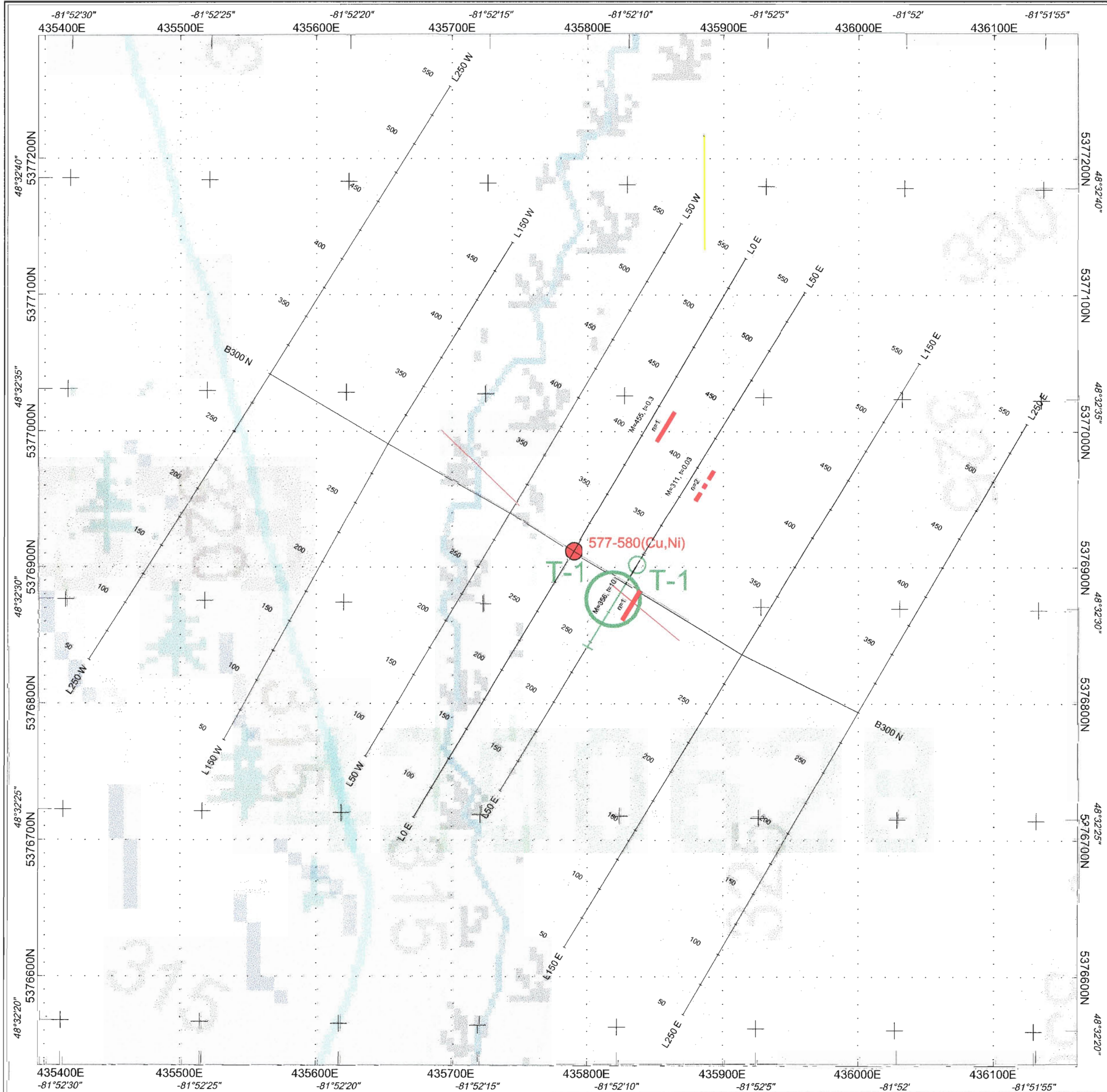
Plate Bz-2

Laurion Mineral Exploration Inc.

**BIAZ GRID, ENID TWP.
TIMMINS - ONTARIO
NTS: 42 A/12**

TOTAL MAGNETIC INTENSITY MAP
Contour Interval: 5, 50, 200 & 1000 nT
Base removed: 57000 nT
Value posted: Right, Stations posted: Left
Instrument: GEM GSM-19

JVX LTD., ref. no. 6-68, June 2007
Topographic base map copyright: Queen's Printer for Ontario
Topographic base map copyright: TEMBEC



LEGEND

- >20 mV/V strong chargeability
- - - 10-20 mV/V moderate chargeability
- Interpreted Aerotem Conductor Axis (Johnson, 2006)
- Aerotem Conductor
- T-1 Exploration Target
- ⊥ Proposed Drillhole
- ⊕ 577-580 (Cu,Ni) Samples

Sample #	UTM Coordinates		Type of sample	Au (ppm)	Cu (ppm)	Ni (ppm)
	East	North				
577	435789	5376911	grab	nil	741	185
578	435789	5376911	grab	nil	243	7
579	435789	5376911	grab	0.08	432	145
580	435789	5376911	grab	nil	1590	549

Reference: Johnson, I.M. (2006) Preliminary Comments - AeroTEM Survey - Enid-Massey Project - Timmins Area - Laurion Gold (Laurion Mineral Exploration Inc.) - August 2006 - Unpublished Company Report

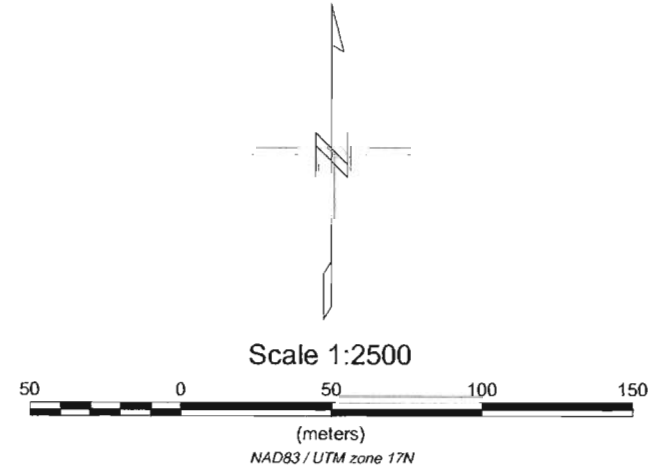


Plate Bz-1

LAURION MINERAL EXPLORATION INC.

BIAZ GRID, ENID TWP.
TIMMINS - ONTARIO
NTS: 42 A/12

COMPILATION MAP

JVX LTD., ref. no. 6-68, June 2007
Topographic base map copyright: Queen's Printer for Ontario
Topographic base map copyright: TEMBEC

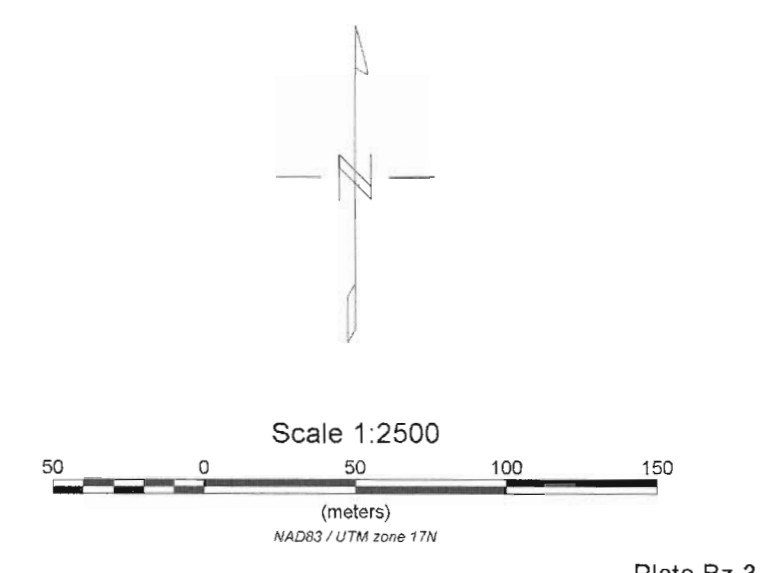
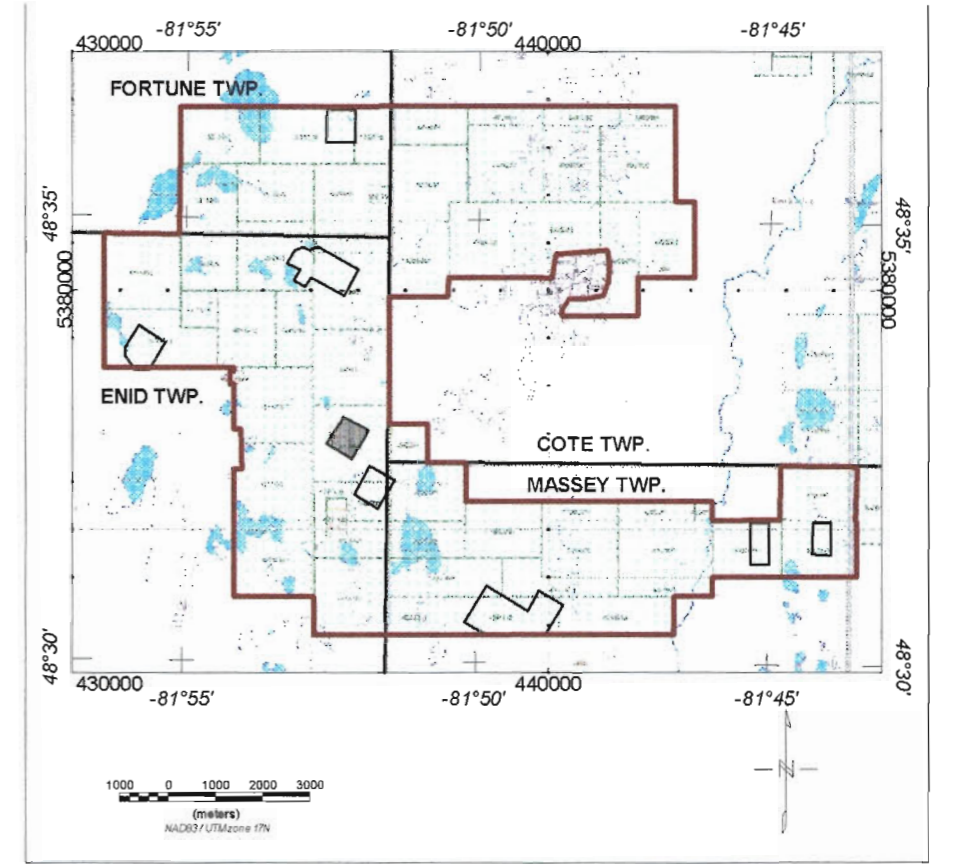
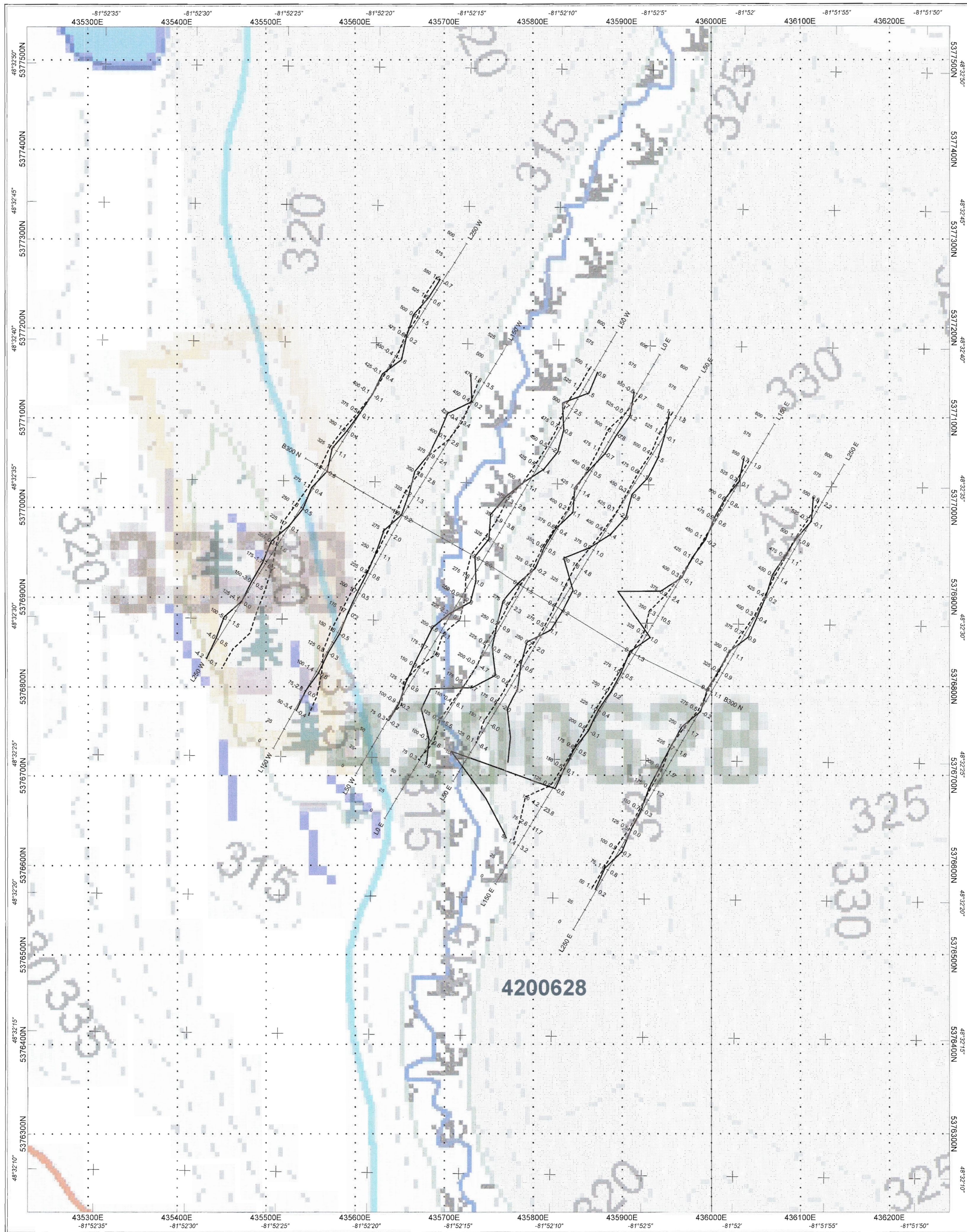


Plate Bz-3

LAURION MINERAL EXPLORATION INC.	
BIAZ GRID, ENID TWP. TIMMINS - ONTARIO NTS: 42 A/12	
HLEM PROFILES (1777 Hz) In Phase: Solid, Postings to the right Profile Scale: 1 cm = 5% Quadrature: Dashed, Postings to the left Profile Scale: 1 cm = 5% Stations posted to the left Coil Separation = 100 m Slope Chained Grid	
JVX LTD., ref. no. 6-68, June 2007 Topographic base map copyright: Queen's Printer for Ontario Topographic base map copyright: TEMBEC	

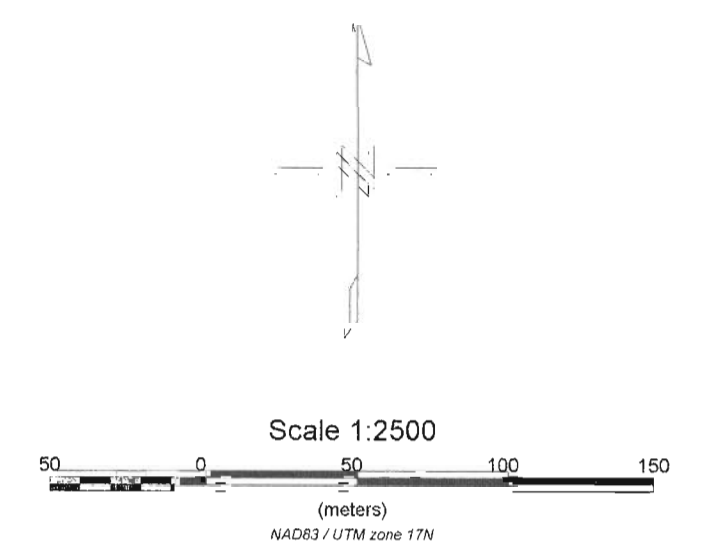
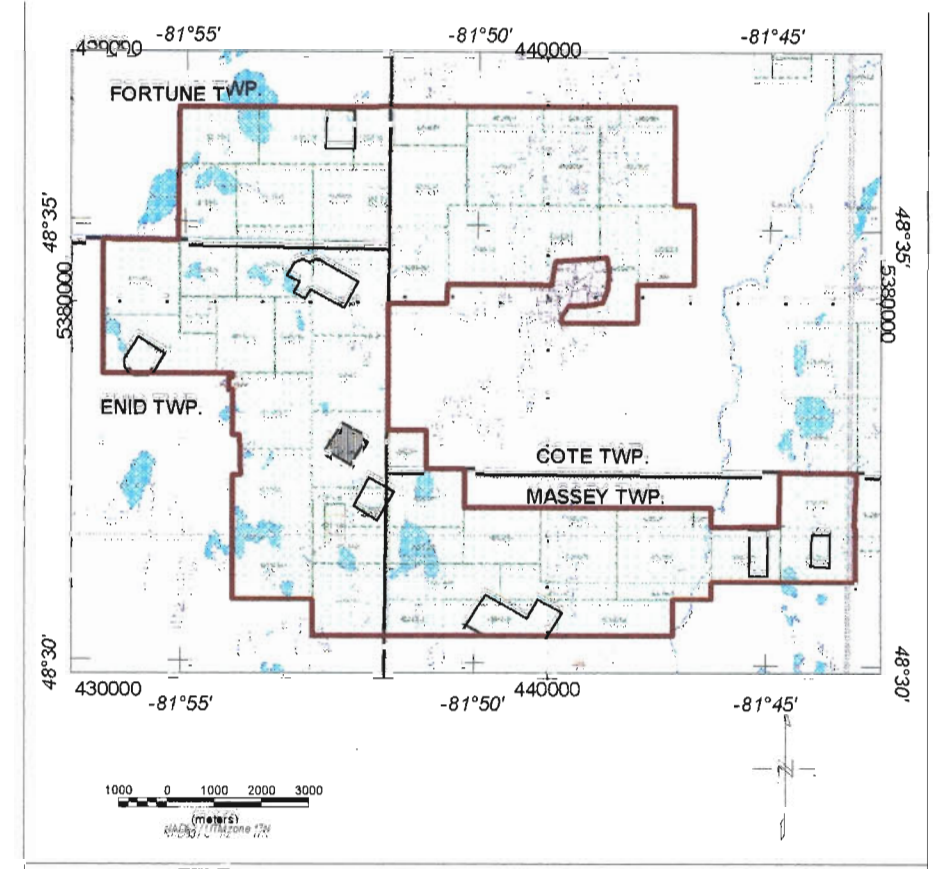
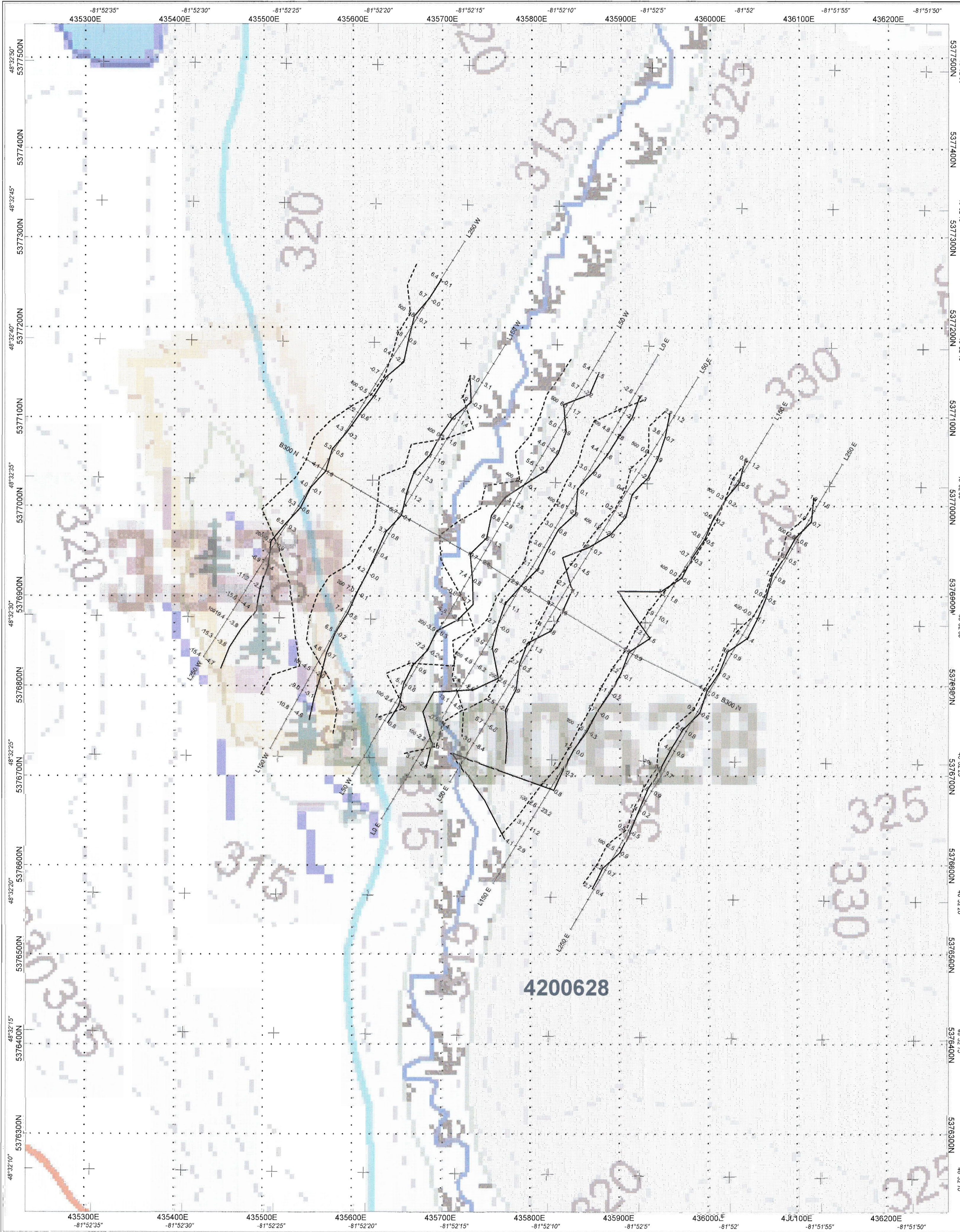
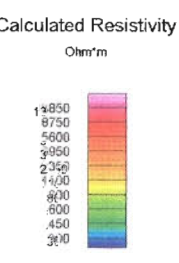
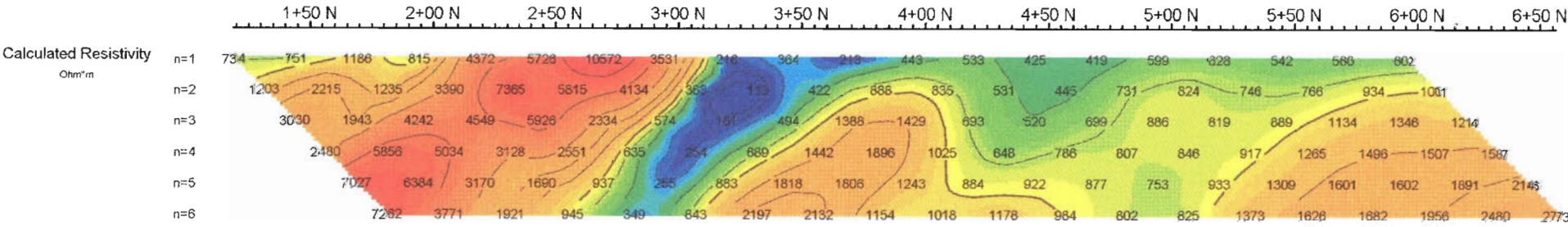
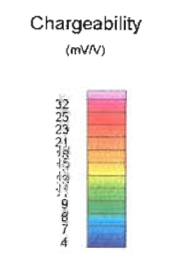
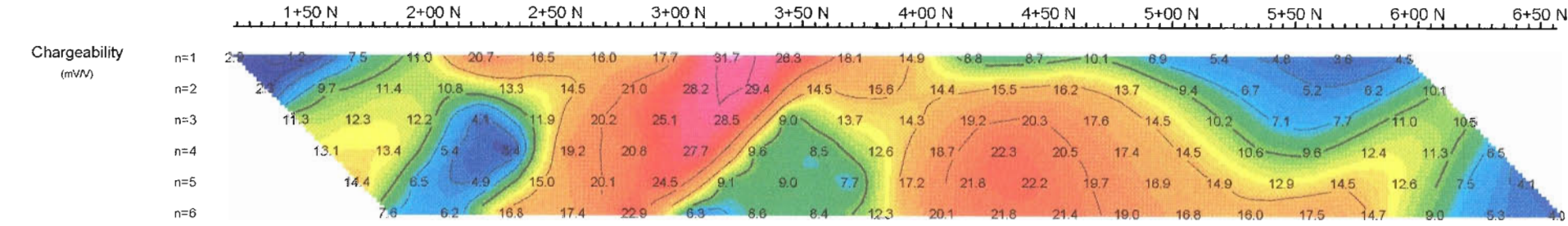
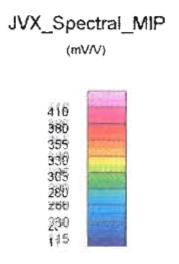
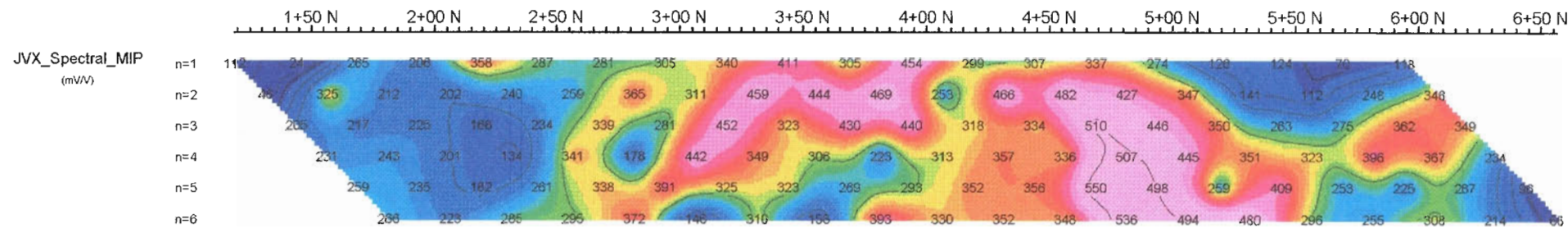
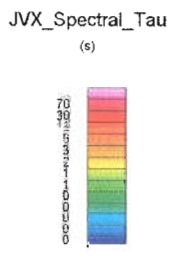
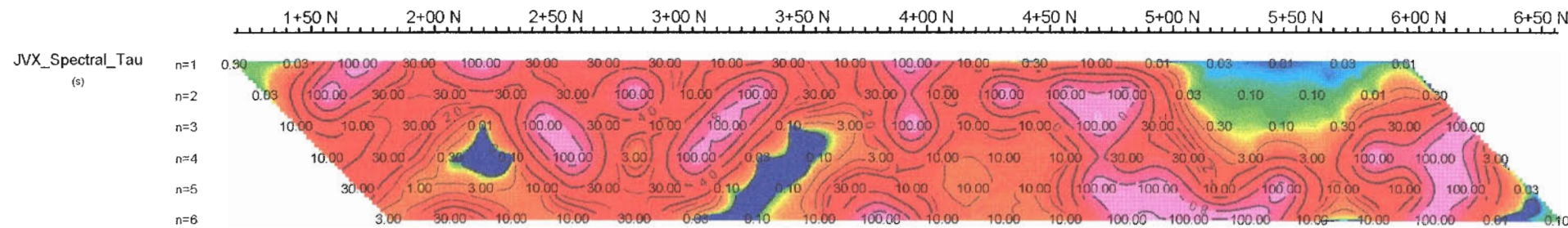


Plate Bz-4

<p>Laurion Mineral Exploration Inc.</p> <p>BIAZ GRID, ENID TWP. TIMMINS - ONTARIO NTS: 42 A/12</p> <p>HLEM PROFILES (7111 Hz) In Phase: Solid, Postings to the right Profile Scale: 1 cm = 5% Quadrature: Dashed, Postings to the left Profile Scale: 1 cm = 5% Stations posted to the left Coil Separation = 100 m Slope Chained Grid</p> <p>JVX LTD., ref. no. 0-68, July 2007 Topographic base map copyright, Queen's Printer for Ontario Topographic base map copyright: TEMBEC</p>
--



Pseudo Section Plot

0+00 E

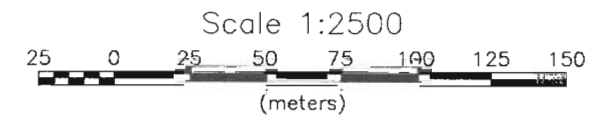
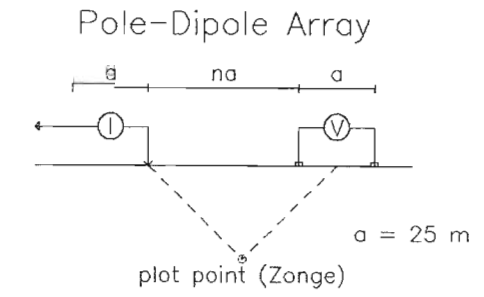


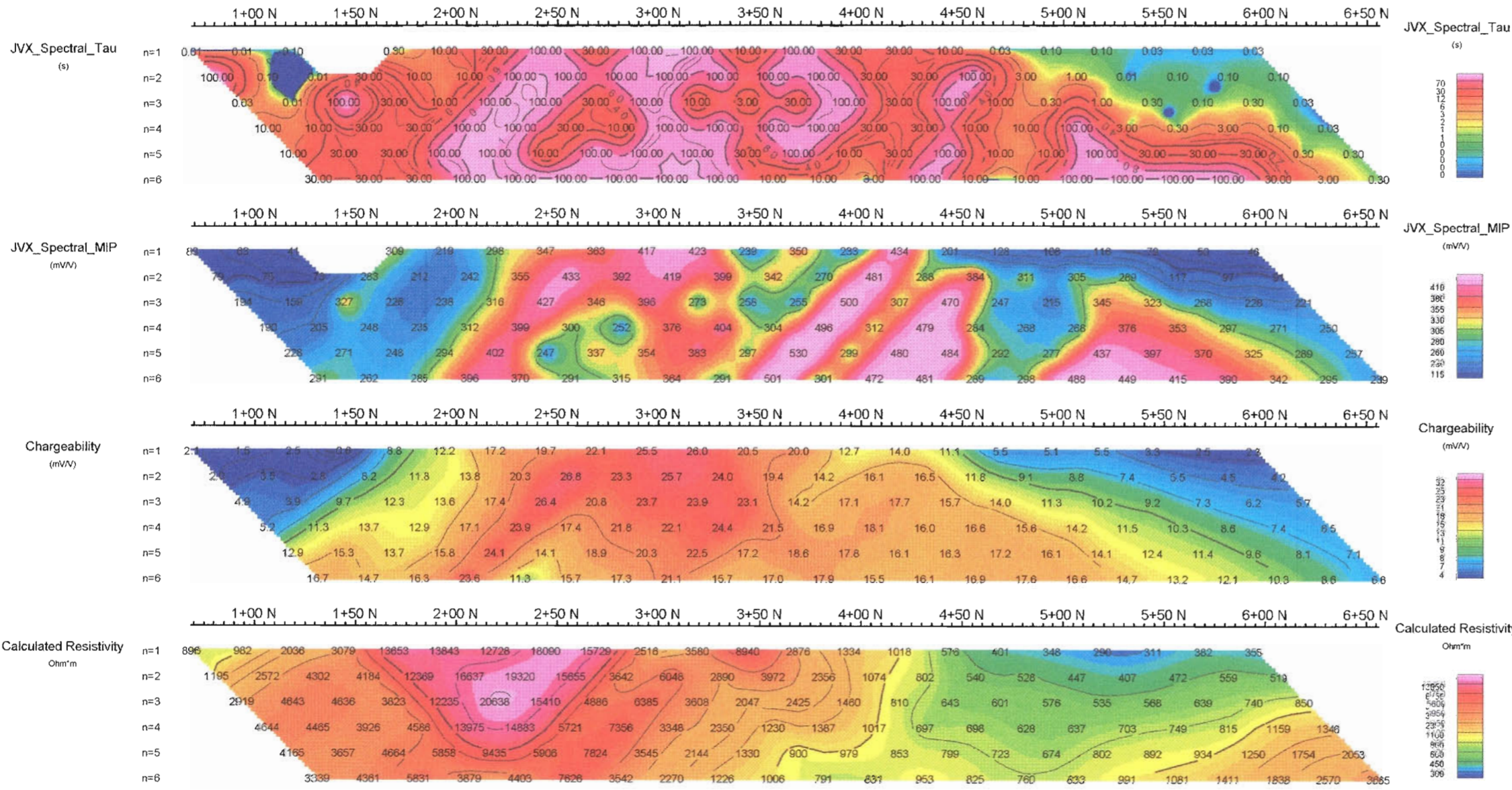
Plate Sa-8

LAURION MINERAL EXPLORATION INC.

JVX SPECTRAL IP/RES SURVEY
 SANTRAP GRID - ENID TWP.
 TIMMINS, ONTARIO
 NTS: 42 A12

Date: 19/07/2007
 Instrument: Scintrex IPR12 Rx(2 sec) & IPC-7 Tx(2 sec)

JVX LTD., ref. 6-68



Pseudo Section Plot 1+00 E

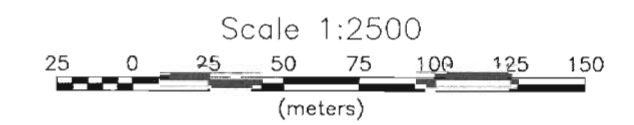
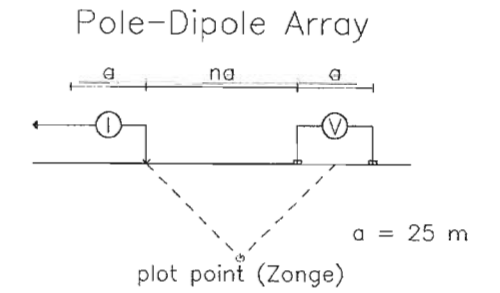


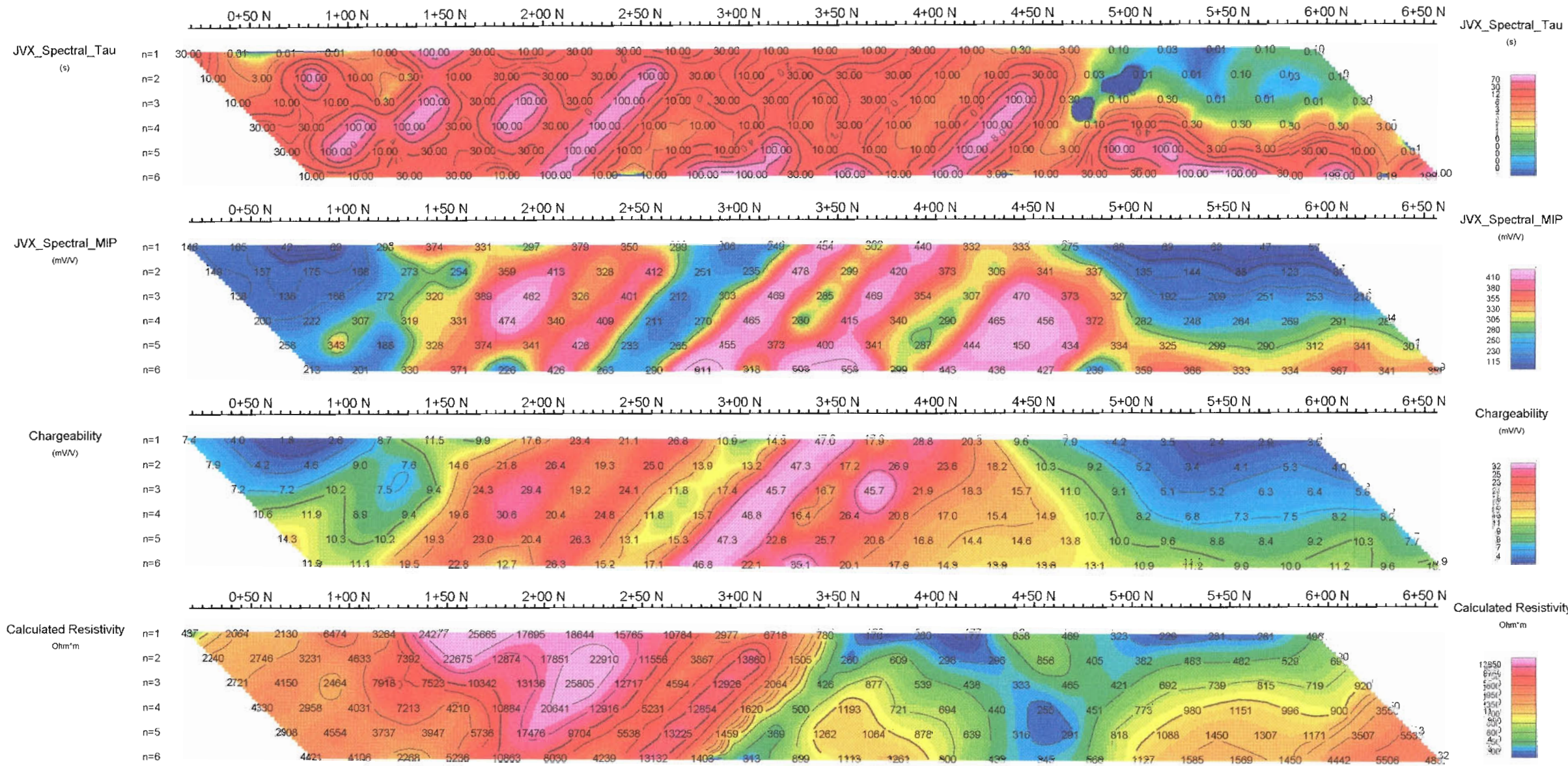
Plate Sa-9

Laurion Mineral Exploration Inc.

JVX SPECTRAL IP/RES SURVEY
 SANTRAP GRID - ENID TWP.
 TIMMINS, ONTARIO
 NTS: 42 A12

Date: 19/07/2007
 Instrument: Scintrex IPR12 Rx(2 sec) & IPC-7 Tx(2 sec)

JVX LTD., ref. 6-68



Pseudo Section Plot 2+00 E

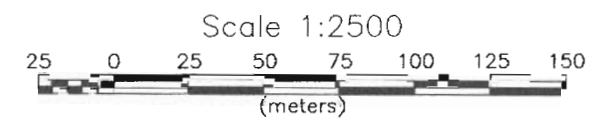
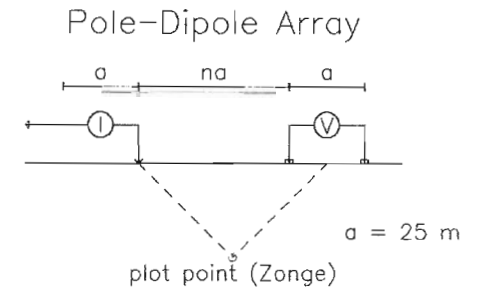


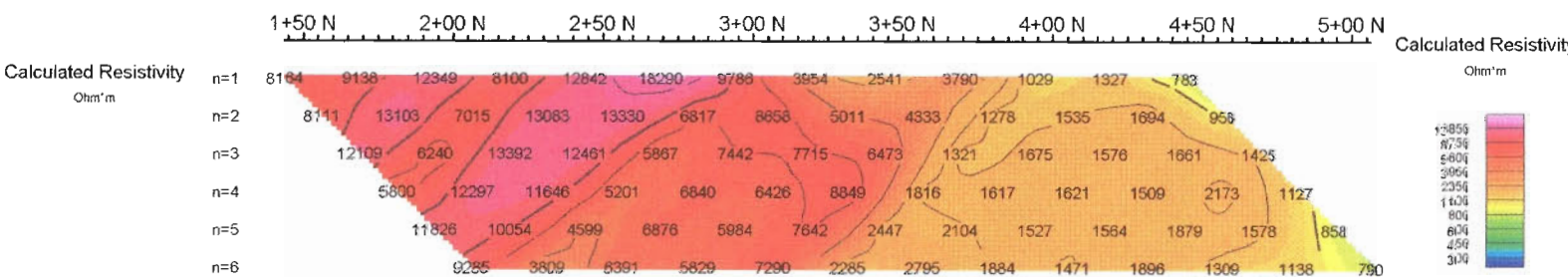
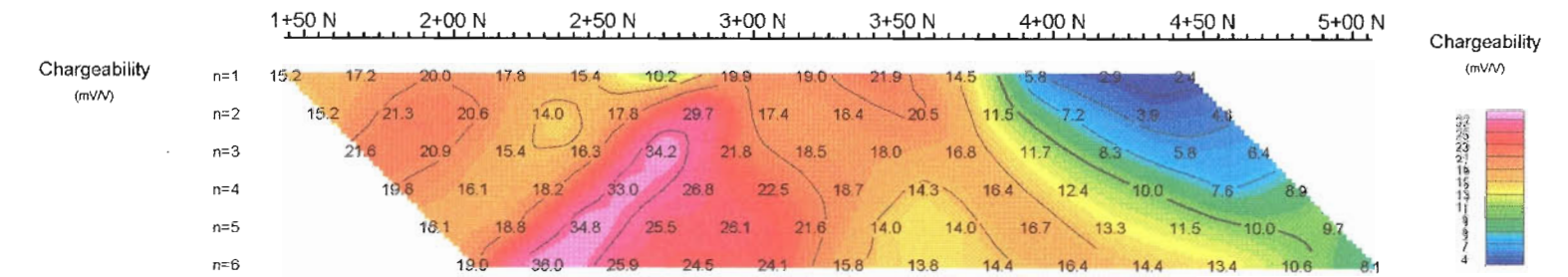
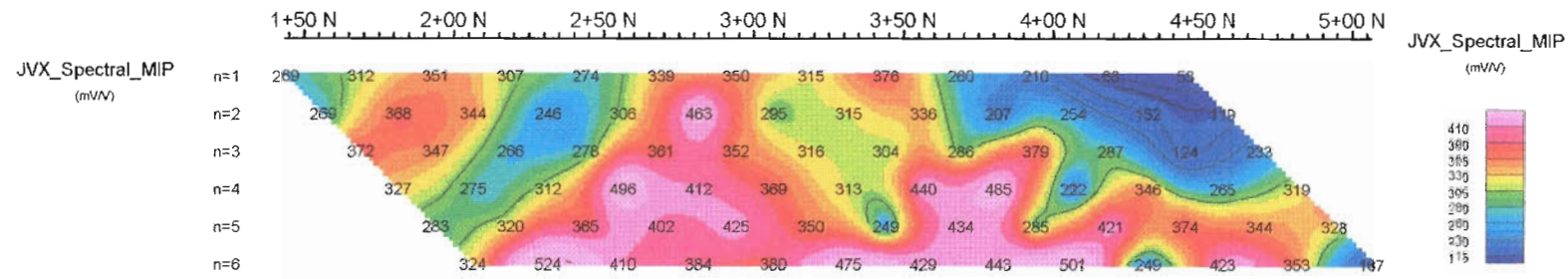
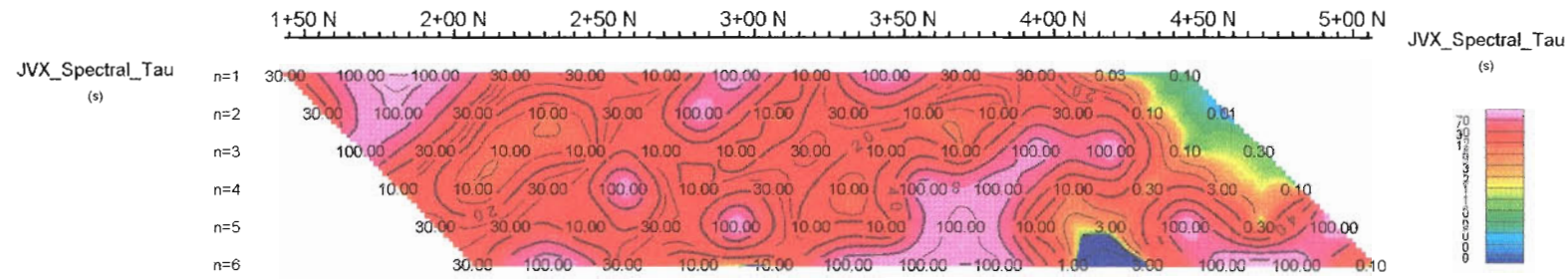
Plate Sa-10

LAURION MINERAL EXPLORATION INC.

JVX SPECTRAL IP/RES SURVEY
SANTRAP GRID - ENID TWP.
TIMMINS, ONTARIO
NTS: 42 A12

Date: 19/07/2007
Instrument: Scintrex IPR12 Rx(2 sec) & IPC-7 Tx(2 sec)

JVX LTD., ref. 6-68



Pseudo Section Plot 3+00 E

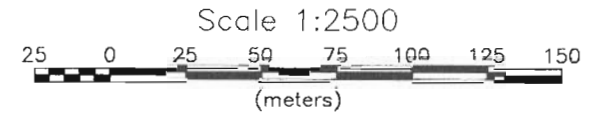
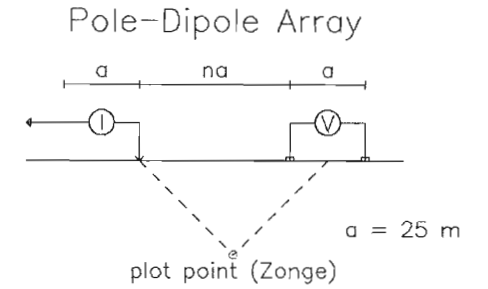


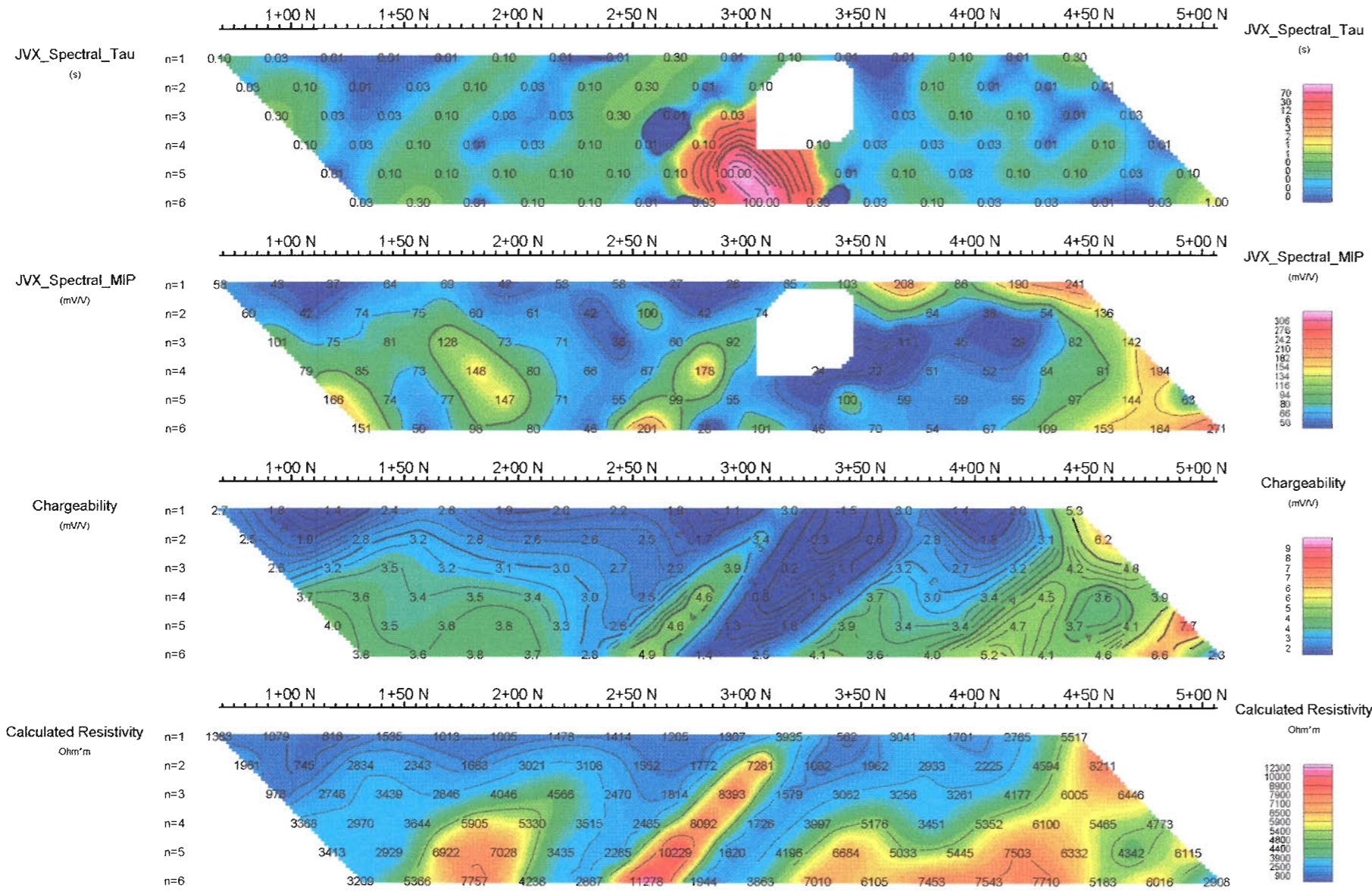
Plate Sa-11

LAURION MINERAL EXPLORATION INC.

JVX SPECTRAL IP/RES SURVEY
SANTRAP GRID - ENID TWP.
TIMMINS, ONTARIO
NTS: 42 A12

Date: 19/07/2007
Instrument: Scintrex IPR12 Rx(2 sec) & IPC-7 Tx(2 sec)

JVX LTD., ref. 6-68



Pseudo Section Plot 0+50 W

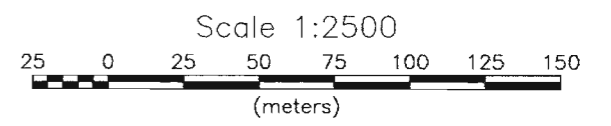
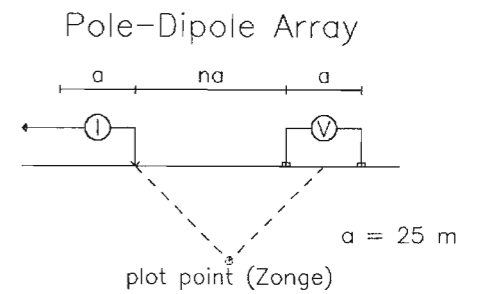


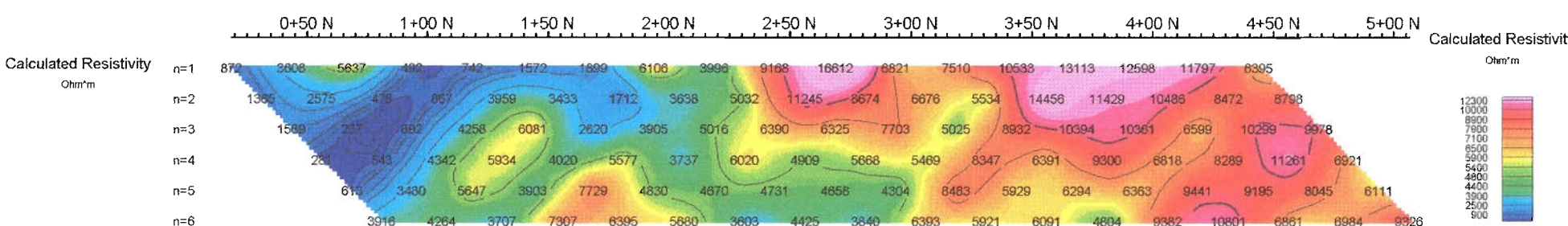
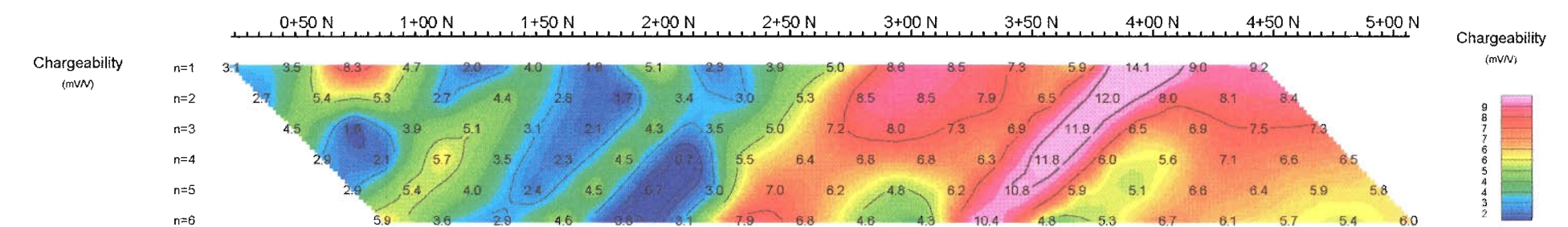
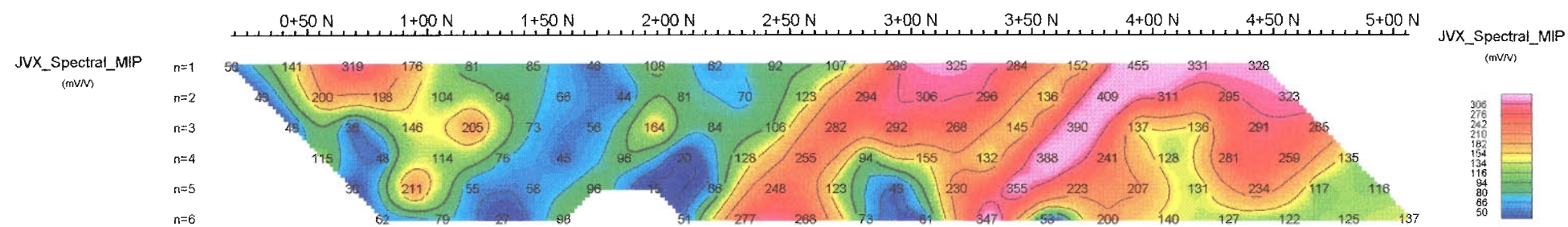
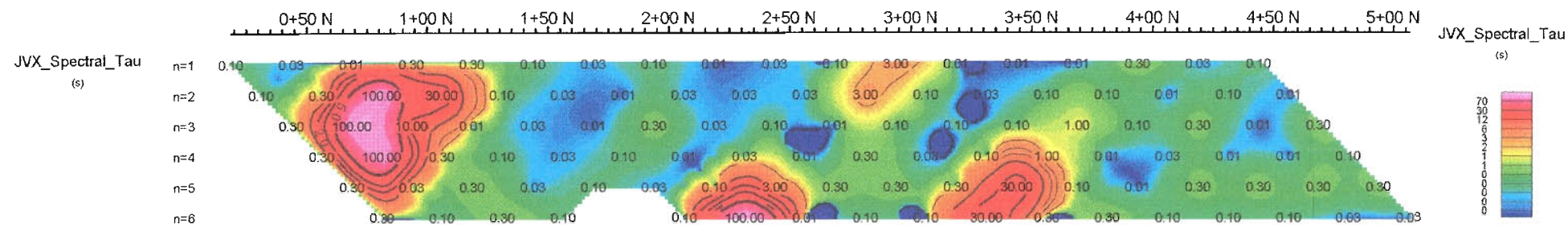
Plate Bz-5

LAURION MINERAL EXPLORATION INC.

JVX SPECTRAL IP/RES SURVEY
 BIAZ GRID - ENID TWP.
 TIMMINS, ONTARIO
 NTS: 42 A12

Date: 19/07/2007
 Instrument: Scintrex IPR12 Rx(2 sec) & IPC-7 Tx(2 sec)

JVX LTD., ref. 6-68



Pseudo Section Plot 0+00 E

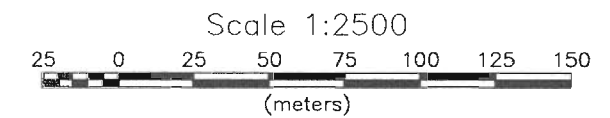
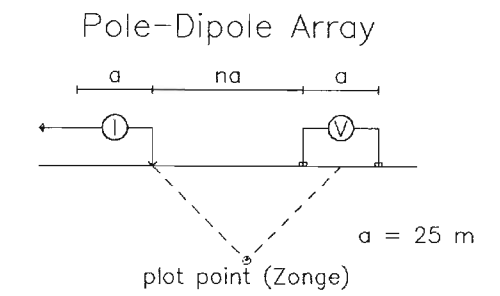


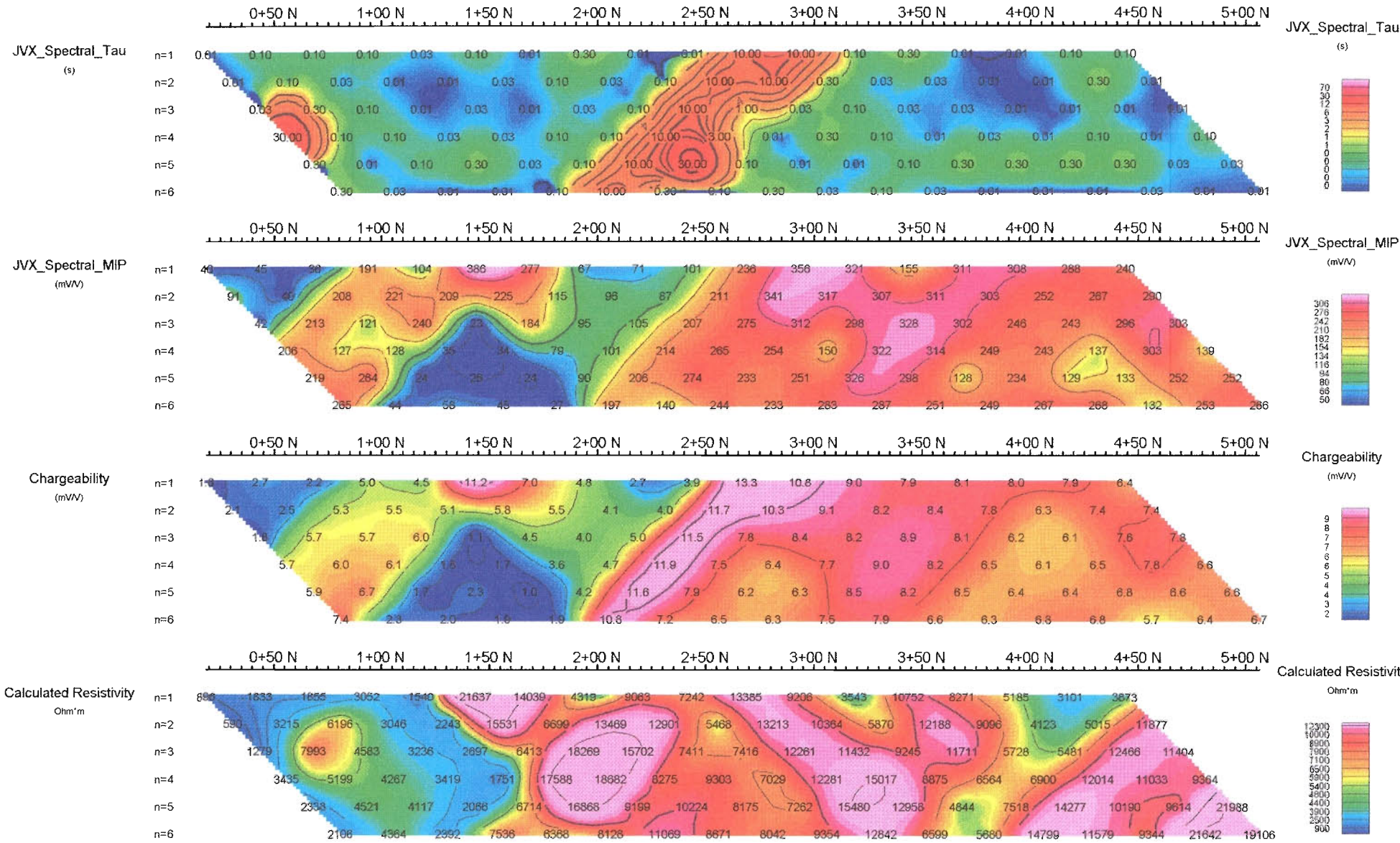
Plate Bz-6

LAURION MINERAL EXPLORATION INC.

JVX SPECTRAL IP/RES SURVEY
 BIAZ GRID - ENID TWP.
 TIMMINS, ONTARIO
 NTS: 42 A12

Date: 19/07/2007
 Instrument: Scintrex IPR12 Rx(2 sec) & IPC-7 Tx(2 sec)

JVX LTD., ref. 6-68



Pseudo Section Plot 0+50 E

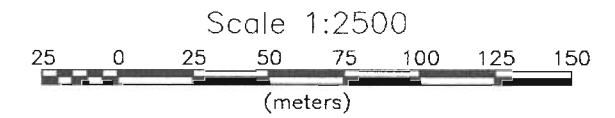
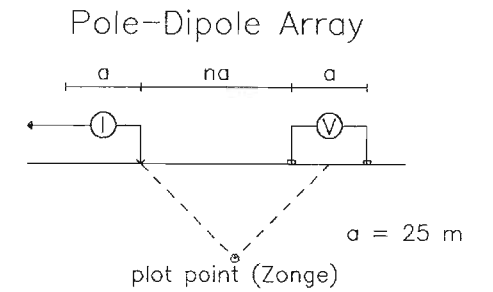


Plate Bz-7

LAURION MINERAL EXPLORATION INC.

JVX SPECTRAL IP/RES SURVEY
 BIAZ GRID - ENID TWP.
 TIMMINS, ONTARIO
 NTS: 42 A12

Date: 19/07/2007
 Instrument: Scintrex IPR12 Rx(2 sec) & IPC-7 Tx(2 sec)

JVX LTD., ref. 6-68