

2.39962

PROSPECTING REPORT

SKALESKY PROPERTY
(KONDRAT CLAIM)

CLAIM # 862665
MCCOMBER TOWNSHIP
42E 12 NW

DEC., 2008
DON A. SKALESKY
PROSPECTOR

LOCATION

D. SKALESKY AND L. LUNDSTROM SPENT TWO DAYS TRYING TO FIND A NEW ACCESS TO THE SKALESKY PROPERTY KNOWN AS THE KONDRAT CLAIM. THE PROPERTY COVERS THE HISTORICAL SHEWING KNOWN AS THE KONDRAT ZONE (TR 862665) AND IS LOCATED WITHIN MCCUMBER TOWNSHIP APPROXIMATELY 3 KM SOUTH OF TRANSCANADA HIGHWAY 11. THE PROPERTY (CLAIM) IS IN THE SOUTHERN META VOLCANIC SUB-BELT OF THE BEARD MORE GERALDTON GREENSTONE BELT. THIS AREA (BEARDMORE/GERALDTON) HAS BEEN A LARGE VOLUME GOLD PRODUCER PRODUCING OVER 4.1 MILLION OUNCES OF GOLD (MASON ET. AL 1983).

ACCESS

THE OLD ACCESS FROM THE TRANSCANADA HIGHWAY 11 TO THE BLACKWATER BRIDGE (NOW REMOVED) IS $\frac{3}{4}$ OF A KM. THE NEW ACCESS IS APPROXIMATELY $1\frac{1}{4}$ KM FROM THE TRANSCANADA TO THE BLACKWATER RIVER WHICH IS $\frac{5}{10}$ OF A KM. PAST THE ROAD THAT LEAD TO THE BLACKWATER BRIDGE, AT THE NEW ACCESS CROSS THE BLACKWATER VIA BOAT AND FOLLOW A STRIPPED AREA BY RTV HEADING SOUTH FOR TWENTY MINUTES THEN A SLIGHT JOG WEST FOR ABOUT 2 MINUTES TO THE SOUTH EASTERN SHORE OF RALPH LAKE, FROM THIS POINT A TEN MINUTE BOAT RIDE WEST AND HEAD NORTHWEST OF RALPH LAKE AT THE BASE OF THE RIDGE (CLAIM # 4225181). THIS BRINGS YOU TO CENTER OF THE CLAIM AND PROCEED ON FOOT TO THE NORTH FOR 130 METERS TO THE SOUTH BOUNDARY OF THE CLAIM. TO GET TO THIS POINT YOU HAVE TO CLIMB A STEEP RIDGE WALK THROUGH THICK BRUSH AND BLOWING AND A HEAVILY FORESTED AREA OF YOUNG BALSAMS. THE CLAIM NOW IS PRETTY MUCH ALL SWAMP AS THE BEAVER DAM BUTTER KNOWN AS A LAKE WHICH WAS ONCE THERE IS NOW GONE.

DAILY LOG

D. SKALESKY + L. LUNDSTROM

OCT. 6, 2008 - OCT. 8, 2008

MONDAY, OCTOBER 6, 2008

WE LEFT THUNDER BAY AT 10:00 AM, STOPPED IN NIPIGON FOR BREAKFAST AND ARRIVED IN BEARMOORE AROUND 2 PM. AFTER CHECKING IN AT THE ROXY MOTEL WE THEN PROCEEDED TO THE BRUSH. WE WENT TO SEE WHERE THE M.N.R. HAD REMOVED THE BRIDGE AND CHECK TO SEE WHAT IF ANYTHING WE COULD POSSIBLY DO TO GET ACROSS TO OUR PROPERTY. AFTER ASSESSING THE SITUATION IT WAS PRETTY CLEAR THERE WAS NO CHANCE AT CROSSING THE RIVER HERE. WE HAD SOMETIME SO WE DECIDED TO CHECK OUT A COUPLE OF ROADS JUST TO THE WEST TO SEE IF THERE WAS ANY POSSIBLE ACCESS BUT WE CONTINUED TO RUN INTO DEAD ENDS. IT WAS GETTING LATE AND WE DECIDED TO HEAD BACK TO THE MOTEL AS WE WERE TO BE CONTACTED BY BORIS (A GEOLOGIST WORKING FOR A VANCOUVER BASED COMPANY) AND FRANK WITOMY WAS SUPPOSED TO DO OUR WORK FOR US IN THE FIRST PLACE. AS IT TURNED OUT THEY DID NOT SHOW UP SO WE WOULD TRY AGAIN TOMORROW HOPEFULLY WITH BETTER RESULTS IN ALL ASPECTS.

TUESDAY, OCTOBER 7, 2008

ON A TIP FROM A FRIEND WE SET OUT TO SEE WHAT WE COULD ACCOMPLISH AND HOPEFULLY EVERYTHING WOULD TURN OUT. WE TRIED THREE DIFFERENT ROADS WITHOUT MUCH SUCCESS. THE FIRST LOCATION WAS A ROAD (ROLAND DRIVE?) WHICH WAS APPROXIMATELY 20.6 KM EAST OF BEARMOORE. WE TOOK THIS ROAD THAT CROSSES AN AIRSTRIP RUNWAY AND LEAD DOWN TO THE BLACKWATER RIVER WHICH WE WERE ABLE TO ACCESS WITH THE ATV. WE PROCEEDED ALONG THIS TRAIL UNTIL WE CAME UPON DUMONT LAKE WHICH WE WERE ABLE TO ACCESS DUE TO THE FACT WHERE IT NARROWED THERE WAS A SANDBAR. WE CONTINUED ON FOR ABOUT 10 MORE MINUTES TIL WE CAME TO CLIST LAKE AND A DEAD END. WE TURNED AROUND AND HEADED BACK FOR THE TRUCK AND WHEN WE ARRIVED THERE THIS GENTLEMAN NAMED ED BRINKMAN WAS WAITING FOR US AND WE TOLD HIM OF OUR PREDICAMENT. HE TOLD US OF ANOTHER LOCATION WHERE HE THOUGHT WE WOULD BE ABLE TO CROSS THE RIVER AND GET TO OUR PROPERTY.

TUESDAY, OCTOBER 7, 2008 CONT'D

WE HEADED WEST TO THE NEXT ROAD WHICH WAS APPROXIMATELY 4.5 km FROM RELAND DRIVE. WE TRAVELED DOWN THE ROAD FOR ABOUT SEVEN MINUTES TIL WE CAME TO NORMAN LAKE IN VINCENT TOWNSHIP AND THERE WAS NO WAY TO CROSS UNLESS YOU HAD A BOAT. FROM THERE WE HEADED BACK TO OUR OLD ACCESS TO LOCATE THE SPOT MR. BRINKMAN HAD SHOWN US. WE DROVE IN AND CROSSED THE RAILWAY TRACKS AND DROVE ALONG THE ROAD PARALLEL TO THE TRACKS AND CAME ACROSS A ROAD JUST HALF AN OLD ACCESS HEADING SOUTH AND ACCORDING TO MR. BRINKMAN'S DIRECTIONS IT WAS NOT THIS ROAD BUT IT WAS THE NEXT ONE WHICH WAS APPROXIMATELY $\frac{5}{10}$ OF A KM. PAST THE OLD ACCESS AND $\frac{1}{4}$ KM. PAST TRANSCANADA HIGHWAY 11. WE UNLOADED THE ATV AND WENT DOWN TO THE BLACKWATER TO CHECK THINGS OUT. THE RIVER AT THIS POINT IS ABOUT 15m WIDE (50') WITH A FAST MOVING CURRENT WHICH COULD PROVE TO BE DANGEROUS. THE FIRST 9m ($\approx 30'$) WOULD NOT BE A PROBLEM BUT THE LAST 6m COULD PROVE TO BE. IT WAS GETTING ON IN THE DAY AND FATIGUE AND FRUSTRATION WERE SETTING IN SO WE PACKED UP AND HEADED FOR THE MOTEL. ON OUR WAY WE DECIDED TO STOP IN AT REX MARK'S MINES OFFICE TO SEE IF WE COULD ACCESS THERE PROPERTY TO MAYBE FIND A WAY IN FROM THE WEST. WE TALKED TO THE MILL MANAGER, RICK ROBERTS AND HE TOLD US WE COULD TRY THE MCWILLIAMS ROAD JUST TO THE WEST BUT TO HIS KNOWLEDGE THERE WAS AN EXTREMELY STEEP HILL AND HE THOUGHT WE COULD HAVE PROBLEMS MAKING IT UP AND THE OLD NORTHEAST EMARE MINE PROPERTY WAS OFF LIMITS. WE HEADED BACK TO THE MOTEL AND FINALLY PACKED UP WITH BOB AND FRANK. FRANK TOLD US THAT HE HAD A WAY IN AND WE WOULD GET TOGETHER AND HEAD OUT IN THE ...

WEDNESDAY, OCTOBER 8, 2008

WE HEADED OUT THAT MORNING AND THE NEW ACCESS TURNED OUT TO BE THE LOCATION THAT MR. BRAINKMAN HAD TOLD US ABOUT. WE NEEDED TWO BOATS, FRANK'S BOAT TO ROPE OURSELVES, THE ATV AND THE EQUIPMENT ACROSS THE RIVER AND BERT'S HELPER, TOM'S BOAT TO CROSS RALPH LAKE TO GET TO OUR CLAIM. THIS ACCESS IS ON FRANK'S PROPERTY AND HE HAS NEVER STRIPPED THIS AREA MAKING IT ATV ACCESSIBLE. WE HEADED SOUTH FOR ABOUT TWENTY MINUTES AND THEN TOOK A JOG WEST FOR A SHORT DISTANCE TIL WE CAME TO THE SOUTHEASTERN SHORE OF RALPH LAKE. WE LOADED UP OUR GEAR AND HEADED WEST UP THE LAKE FOR ABOUT TEN MINUTES TIL WE WERE LINED UP WITH THE CENTER OF OUR CLAIM ACCORDING TO BERT'S GAS READING. WE DECIDED THE BOAT AND HEADED NORTH UP A STEEP RIDGE, AT THIS POINT BERTS TOOK ANOTHER READING AND SAID IT WAS 130M TO OUR SOUTH BOUNDARY LINE. AS IF CLIMBING THE RIDGE WASN'T BAD ENOUGH WE HAD TO CONTEND WITH BLOW-DOWNS, THICK BRUSH AND HEAVILY FORESTED YOUNG BALSAMS NOT TO MENTION THE STEADY RAINFALL. WHEN WE REACHED THE BOUNDARY LINE WE CAME UPON AN OUTCROP OF ROCK WITH QUARTZ VEINING RUNNING PARALLEL TO THE SWAMP. BERTS AND HIS HELPER TOM HEADED NORTH TO LOCATE THE ZONE IN THE NW CORNER OF THE CLAIM WHICH LLOYD AND I CAME ACROSS IN 2005. LLOYD AND I HEADED WEST TO FOLLOW THIS OUTCROP OF ROCK AND PROSPECTED AND SAMPLED IT. WE TOOK TWO SAMPLE BAGS (#1, #2) IN THE SOUTHWESTERN CORNER OF THE CLAIM. THIS OUTCROP SEEMED TO CROSS THE LENGTH OF THE CLAIM BUT WE CAN'T SAY FOR SURE AS WE ONLY WALKED IT TO THE WEST FROM THE CENTER OF THE CLAIM. WE DECIDED TO HEAD BACK TO THE SPOT FROM WHICH WE CAME IN AND DISCOVERED THIS OUTCROP AND THEN HEADED NORTH ACROSS THE SWAMP AND CAME TO WHERE THE BEAVER POND (BERTS LAKE) DRAINAGE WAS LOCATED AND...

WEDNESDAY, OCTOBER 8, 2008 CONT'D

WE BELIEVE THAT KODIAK EXPLORATIONS WHICH IS TIED ON TO OUR PROPERTY HAD A TRAPPER IN THE AREA COME IN AND GET RID OF THE BEAVERS AND THEN THEY BLEW THE DAM THEMSELVES, WHEN WE CROSSED THE SWAMP WE CAME TO A RIDGE WHICH IS A CONTINUATION OF THE ZONE WE DISCOVERED IN 2005 AND DIPS TO THE SOUTH UNDER THE SWAMP. AS WE PROCEEDED THROUGH THE THICK BRUSH AND BLOODWOODS WE STUMBLED ACROSS SOME OLD PITS WHICH WE CAME ACROSS IN 2005. WE MET UP WITH BERN AND TOM AND HEADED EAST ALONG THIS RIDGE A CHAIN OF A CLEARING WHERE THE ZONE IS EXPOSED. WE PROSPECTED AND SAMPLED AND TOOK ONE BAG (SAMPLE #3). BERN AND TOM TOOK SAMPLES AS WELL. ACCORDING TO BERN WITH THE CO-ORDINATES HE TOOK AND FED INTO THE COMPUTER AT THE LIBRARY IN BEARDMORE THERE ARE THREE ZONES THAT RUN ACROSS OUR CLAIM. ONE IS IN THE NW CORNER AND RUNS ACROSS TO THE NE CORNER AND BEYOND ONTO FRANK'S PROPERTY AS WELL AS ONE THAT RUNS UNDER THE SWAMP ORIGINALLY KNOWN AS THE BEAVER AREA AND THE OTHER IS UNDER THE SWAMP WITHIN THE SOUTHERN BOUNDARY LINE OF THE CLAIM. WE CALLED IT A DAY AND HEADED BACK TO THE BEAT PROSPECTING ALONG THE WAY. WE MET UP WITH FRANK WHERE WE HAD LEFT OUR ATV AND PROCEEDED TO THE BLACKWATER RIVER. WHILE CROSSING THE RIVER WE JUST ABOUT LEFT THE ATV AS IT SHIFTED IN THE BEAT. ONCE WE HAD EVERYTHING ACROSS WE LOADED UP OUR GEAR AND HEADED FOR THE MOTEL. BERN CAME OVER LATE THAT NIGHT TO MAKE COPIES OF A REPORT AND MAP WE HAD AND TOLD US HE WAS GOING TO RECOMMEND OUR CLAIM TO HIS SUPERIOR. WE LEFT BEARDMORE THE NEXT MORNING.

THE SUMMARY OF THIS TRIP IS AS FOLLOWS:

- WE SPENT TWO DAYS TRYING TO LOCATE A NEW ACCESS TO THE PROPERTY SINCE THE M.I.R. REMOVED THE BRIDGE TO OUR ONLY ROUTE TO THE PROPERTY.
- WE SPENT ONE DAY PROSPECTING AND SAMPLING ON THE CLAIM

Yours truly,

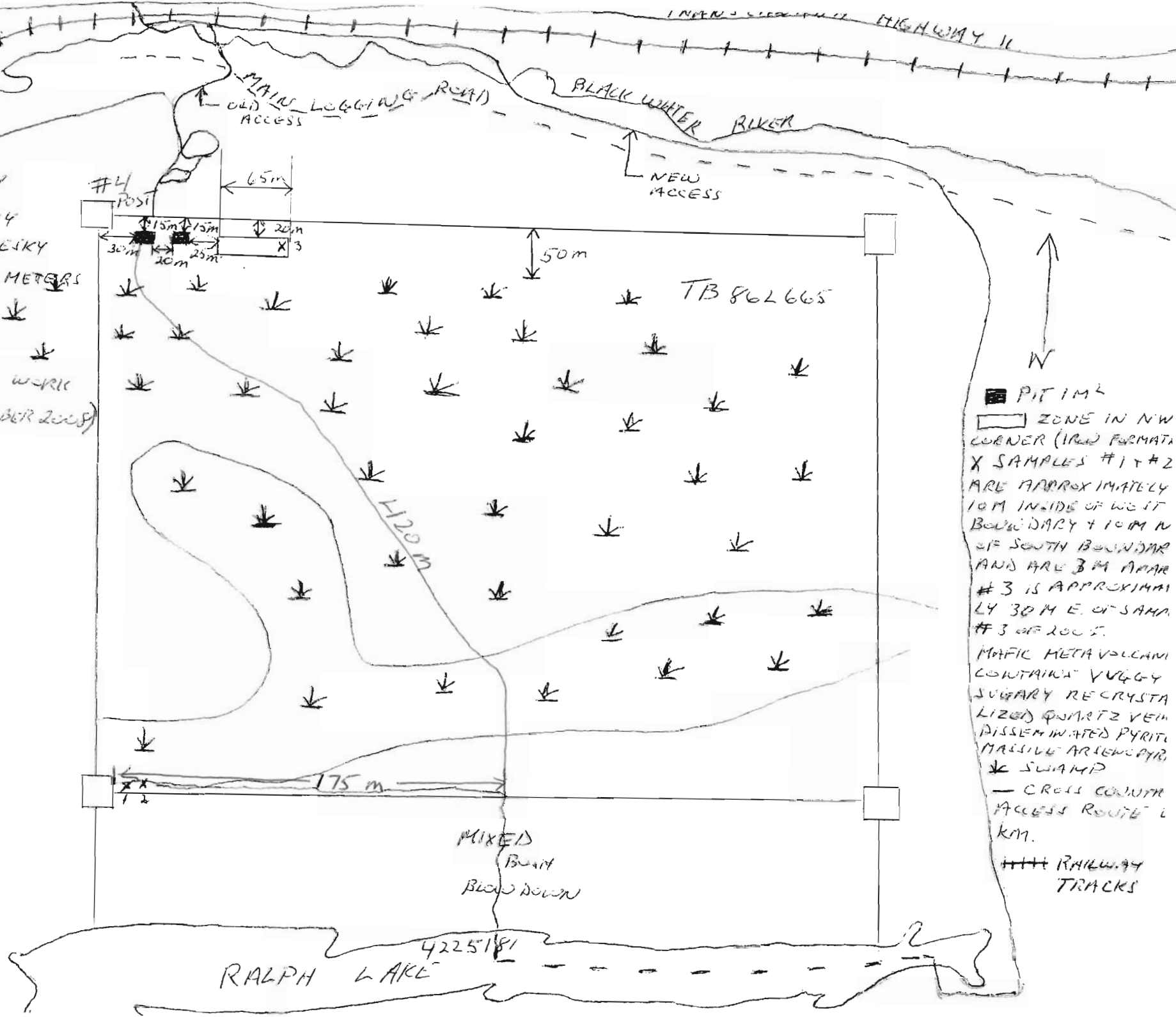
Don A. Skalesky
DON A. SKALESKY

Lloyd Lundstrom

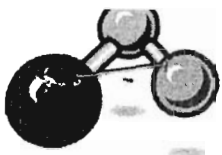


PLEASE NOTE THAT LLOYD LUNDSTROM SIGNED HIS NAME ON A BLACK SHEET OF PAPER BEFORE HE LEFT FOR HOME IN ALBERTA IN OCTOBER. THAT IS WHY IT IS TAPED ON TO THIS SHEET.

PREPARED BY
 DON SKALESKY
 FOR ANU SKALESKY
 SCALE 1 CM = 50 METERS
 DECEMBER
 2008
 ASSESSMENT WORK
 DONE IN OCTOBER 2008



PIT 1 M²
 ZONE IN NW CORNER (IRON FORMATA)
 SAMPLES #1 + #2 ARE APPROXIMATELY 10 M INSIDE OF WEST BOUNDARY + 10 M N OF SOUTH BOUNDARY AND ARE 3 M APART #3 IS APPROXIMATELY 30 M E. OF SAME #3 OF LOC 5.
 MAFIC METAVOLCANIC CONTAINS VUGGY SUGARY RECRYSTALLIZED QUARTZ VEIN DISSEMINATED PYRITE MASSIVE ARSENOPYR
 SWAMP
 — CROSS COUNTRY ACCESS ROUTE 1 KM.
 RAILWAY TRACKS



ACCURASSAY

LABORATORIES

1046 Gornam St.
Thunder Bay, ON
P7B 5X5
Ph: (807) 626-1630
Fx: (807) 622-7571
www accurassay.com

INVOICE

Invoice No.: 99943
Date: October 31, 2008
Page: 1

Bill To:
Skalesky, Don
732 Ernestine Ave
Thunder Bay, Ontario P7E 1W8
Canada

Analyzed for:
Skalesky, Don
732 Ernestine Ave
Thunder Bay, Ontario P7E 1W8
Canada

Business No.: 10029 4768

Due Date: October 31, 2008

Code	Qty	Unit	Description	Unit Price	Amount
			Job# 200843997		
ALP1	3	ea.	Sample Prep	6.50	19.50
ALFA1	3	ea	Gold FA/AA (30g)	11.75	35.25
PAID					
Comments				Subtotal	54.75
				Total Amount	54.75

Exceptional Service. Expert Analysis.



1046 Gorham Street
Thunder Bay, ON
Canada P7B 5X5

Tel: (807) 626-1630
Fax: (807) 622-7571

www accurassay.com
assay@accurassay.com

Certificate of Analysis

Friday, October 31, 2008

Skalesky, Don
732 Erwestine Ave.
Thunder Bay, ON, CAN
P7E1W8
Email#: skalesky@hotmail.com

Date Received: Oct 24, 2008
Date Completed: Oct 29, 2008

Job #: 200843997
Reference:
Sample #: 3 Rock

Acc #	Client ID	Au ppb	Au oz/t	Au g/t (ppm)
328932	SIL K1-08	<5	<0.001	<0.005
328933	SIL K2-08	<5	<0.001	<0.005
328934	SIL K3-08	4180	0.122	4.180
328935 Dup	SIL K3-08	4292	0.125	4.292

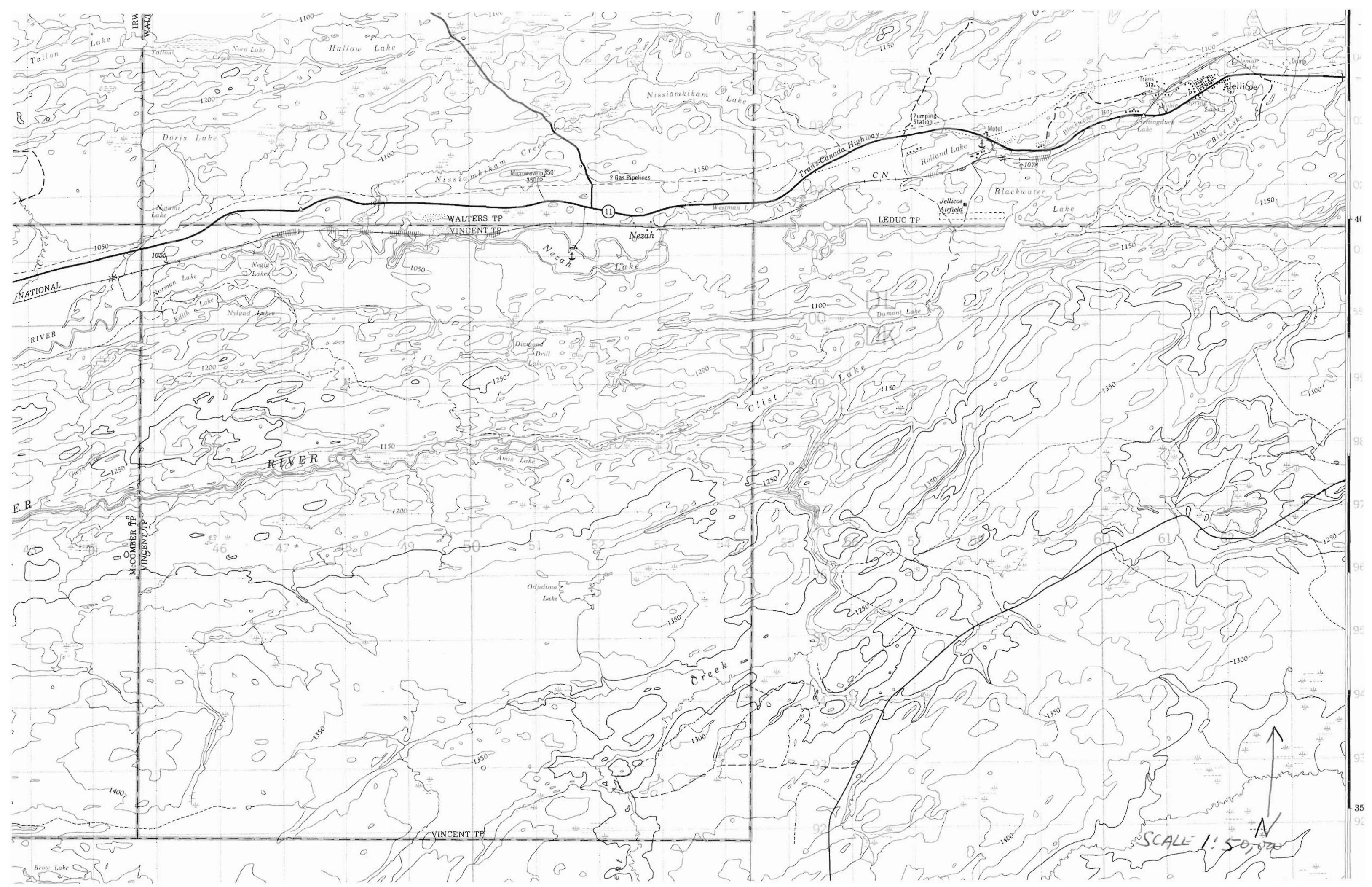
PROCEDURE CODES: AL4AU3

By: 

Derek Demianiuk H.Bsc., Laboratory Manager

Certified The results included on this report relate only to the items tested
The Certificate of Analysis should not be reproduced except in full, without
the written approval of the laboratory

AL903-0200-10/31/2008 3:41 PM



Date / Time of Issue: Thu Dec 04 10:59:38 EST 2008

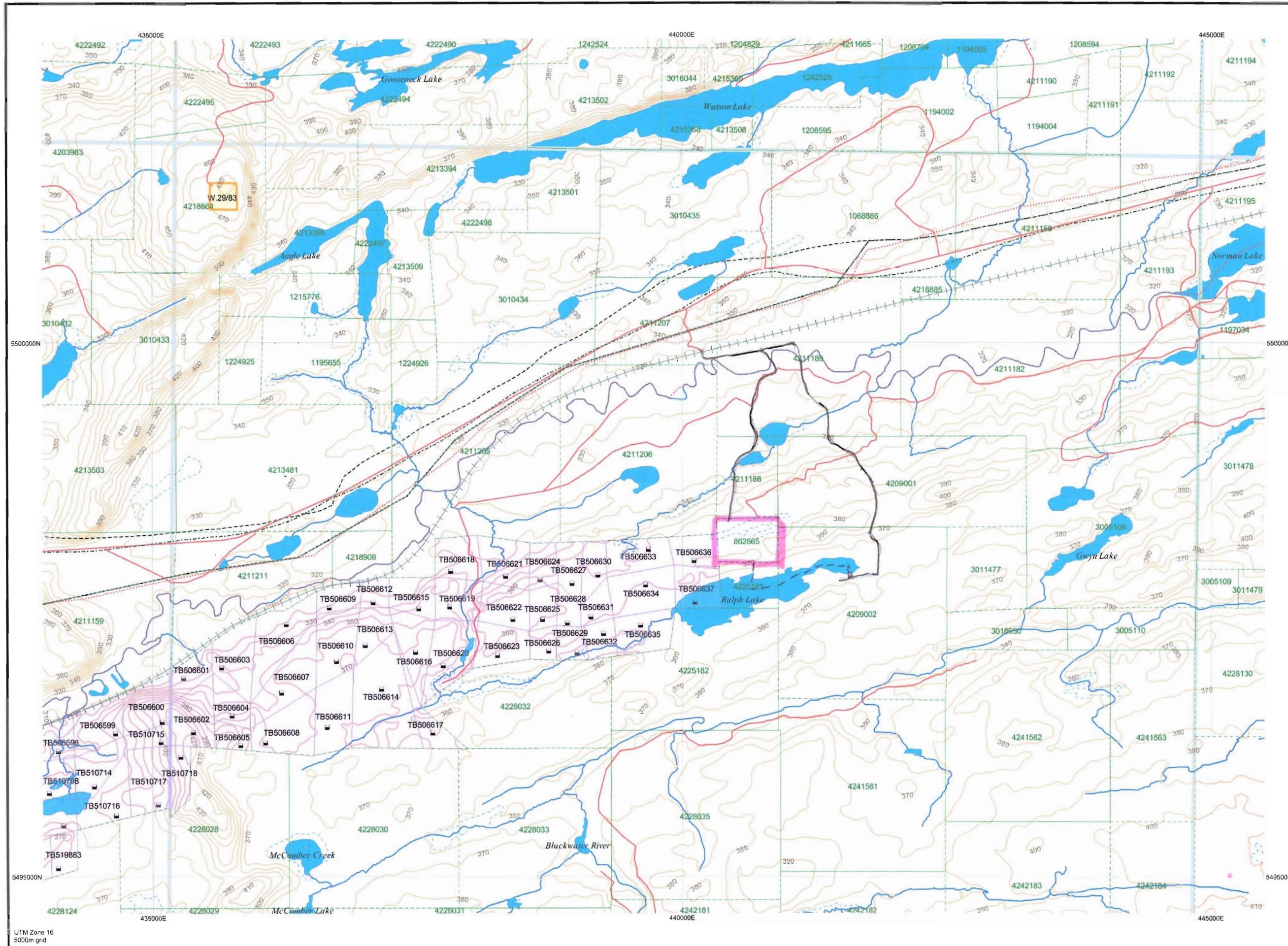
TOWNSHIP / AREA
MCCOMBER

PLAN
G-0166

ADMINISTRATIVE DISTRICTS / DIVISIONS

Mining Division
Land Titles/Registry Division
Ministry of Natural Resources District

Thunder Bay
THUNDER BAY
NIPIGON



TOPOGRAPHIC

- Administrative Boundaries
- Township
- Concession Lot
- Provincial Park
- Indian Reserve
- Cliff, Pit & Pile
- Contour
- Mine Shafts
- Mine Headframe
- Railway
- Road
- Trail
- Natural Gas Pipeline
- Utilities
- Tower

Land Tenure

Freehold Patent

- Surface And Mining Rights
- Surface Rights Only
- Mining Rights Only

Leasehold Patent

- Surface And Mining Rights
- Surface Rights Only
- Mining Rights Only

Licence of Occupation

- Uses Not Specified
- Surface And Mining Rights
- Surface Rights Only
- Mining Rights Only
- Land Use Permit
- Order In Council (Not open for staking)
- Water Power Lease Agreement

Mining Claims

- 1234567 Mining Claim
- 1234567 Filled Only Mining Claims

LAND TENURE WITHDRAWALS

- 1234 Areas Withdrawn from Disposition
- Wsm Mining Acts Withdrawal Types
- Ws Surface And Mining Rights Withdraw
- Wm Surface Rights Only Withdraw
- Wsm Order In Council Withdrawal Types
- Ws Surface Rights Only Withdraw
- Wm Mining Rights Only Withdraw
- Ns IMPORTANT NOTICE!

Scale 1:40000

700m 0m 2.1km

LAND TENURE WITHDRAWAL DESCRIPTIONS

Identifier	Type	Date	Description
W-TB-56/06	Ws	Jul 14, 2006	W-TB-5 R.O. withdrawal S.35 Mining Act RSO 1999, July 14th, 2006 Click to li withdrawal order
W.29/83	Ws	Oct 20, 1983	SEC.36/80 W.29/83 20/10/83 S.R.O. FILE 186528

IMPORTANT NOTICES

Areas under which special regulation, limitations or conditions exist that affect normal prospecting, staking and mineral development activities.

Type Description

Wpower WIND POWER AREA - APP. FOR SRO, PLA SUBJECT TO SECTION 20(2) ENHRING ACT, FOR FURTHER WIND POWER INFORMATION OR PERMITS APPL. PLEASE CONTACT THE LOCAL MINING DISTRICT OFFICE.

Those wishing to stake mining claims should consult with the Provincial Mining Recorder's Office of the Ministry of Northern Development and Mines for additional information on the status of the lands shown hereon. This map is not intended for navigational, survey, or land title determination purposes as the information shown on this map is compiled from various sources. Completeness and accuracy are not guaranteed. Additional information may also be obtained through the local Land Titles or Registry Office, or the Ministry of Natural Resources.

The information shown is derived from digital data available in the Provincial Mining Recorder's Office at the time of downloading from the Ministry of Northern Development and Mines web site.

General Information and Limitations

Contact Information:
Provincial Mining Recorder's Office
Willet Green Miller Centre 933 Ramsey Lake Road
Sudbury ON P3E 6B5
Home Page: www.mndm.gov.on.ca/MNDM/MINES/LANDS/misnpgge.htm

Toll Free
Tel: 1 (888) 415-9845 ext 57
Fax: 1 (877) 670-1444

Map Datum: NAD 83
Projection: UTM (6 degree)
Topographic Data Source: Land Information Ontario
Mining Land Tenure Source: Provincial Mining Recorder's Office

This map may not show unregistered land tenure and interests in land including certain patents, leases, easements, right of ways, flooding rights, licences, or other forms of disposition of rights and interest from the Crown. Also certain land tenure and land uses that restrict or prohibit free entry to stake mining claims may not be illustrated.

↑ SKALESKY CLAIM