



**REPORT ON A HELICOPTER-BORNE
VERSATILE TIME DOMAIN ELECTROMAGNETIC (VTEM)
GEOPHYSICAL SURVEY**

**Nickel South Extension Blocks 1 & 2
Northern, Ontario, Canada**

**For:
KLONDIKE SILVER CORP.**

**By
Geotech Ltd.
245 Industrial Parkway North
Aurora, Ont., CANADA, L4G 4C4
Tel: 1.905.841.5004
Fax: 1.905.841.0611
www.geotech.ca**

Email: info@geotech.ca

Survey flown in January 2008

**Project 7121
March, 2008**

Table of Contents

Executive Summary.....	iv
1. INTRODUCTION	1
1.1 General Considerations.....	1
1.2 Survey and System Specifications	1
1.3 Data Processing and Final Products	2
1.4 Topographic Relief and Cultural Features.....	2
2. DATA ACQUISITION.....	3
2.1 Survey Area.....	3
2.2 Survey Operations.....	3
2.3 Flight Specifications.....	4
2.4 Aircraft and Equipment.....	4
2.4.1 Survey Aircraft.....	4
2.4.2 Electromagnetic System	4
2.4.3 Airborne magnetometer.....	7
2.4.4 Radar Altimeter	7
2.4.5 GPS Navigation System	8
2.4.6 Digital Acquisition System.....	8
2.4.7 Base Station	8
3. PERSONNEL.....	9
4. DATA PROCESSING AND PRESENTATION.....	10
4.1 Flight Path	10
4.2 Electromagnetic Data.....	10
4.3 Magnetic Data	11
5. DELIVERABLES	12
5.1 Survey Report	12
5.2 Maps.....	12
5.3 Digital Data.....	12
6. CONCLUSIONS.....	17

Table of Figures

FIGURE 1 - VTEM CONFIGURATION	5
FIGURE 2 - VTEM WAVEFORM & SAMPLE TIMES	5

Tables

TABLE 1 - SURVEY BLOCK	3
TABLE 2 - SURVEY SCHEDULE	3
TABLE 3 – DECAY SAMPLING SCHEME	6
TABLE 4 – ACQUISITION SAMPLING RATES	8
TABLE 5 – GEOSOFT GDB DATA FORMAT.....	13

Appendices

A. SURVEY LOCATION MAPS	18
B. SURVEY BLOCK COORDINATES.....	20
C. VTEM WAVEFORM.....	21
D. GEOPHYSICAL MAPS	22
E. MODELLING VTEM DATA.....	24

REPORT ON A HELICOPTER-BORNE VERSATILE TIME DOMAIN ELECTROMAGNETIC SURVEY

Nickel South Extension Blocks 1 & 2, Lost Lake, Ontario

Executive Summary

During January 16th to 23rd, 2008, Geotech Ltd. carried out a helicopter-borne geophysical survey for Klondike Silver Corp. over two blocks located south-east of the Town of Timmins, in Ontario., Canada.

Principal geophysical sensors included a versatile time domain electromagnetic (VTEM) system and a cesium magnetometer. Ancillary equipment included a GPS navigation system and a radar altimeter. A total of 1323 line-km were flown.

In-field data processing involved quality control and compilation of data collected during the acquisition stage, using the in-field processing centre established at the Howard Johnson Hotel in Timmins, Ontario. Preliminary and final data processing, including generation of final digital data products were done at the office of Geotech Ltd. in Aurora, Ontario.

The processed survey results are presented as electromagnetic stacked profiles and the following grids;

- B-field time channel 3.286 ms
- Total Magnetic Intensity
- Second Vertical Magnetic Derivative
- Digital Elevation Model.

Digital data includes all electromagnetic and magnetic products plus positional, altitude and raw data.

1. INTRODUCTION

1.1 General Considerations

These services are the result of the Agreement made between Geotech Ltd. and Klondike Silver Corp. to perform a helicopter-borne geophysical survey over the Nickel South Extension block's near Timmins, Ontario.

1323 kilometers of geophysical data were acquired during the survey.

John Keating acted on behalf of Klondike Silver Corp. during data acquisition and data processing phases of this project.

Survey blocks are as shown in Appendix A.

The crew was based in Timmins, Ontario for the acquisition phase of the survey, as shown in Section 2 of this report.

Survey flying was completed on January 23rd, 2008. Preliminary data processing was carried out daily during the acquisition phase of the project. Final data presentation and data archiving was completed in the Aurora office of Geotech Ltd. in March, 2008.

1.2 Survey and System Specifications

The both survey blocks were flown at a nominal traverse line spacing of 75 meters, in a north-south direction (0° Azimuth). The Tie lines were flown perpendicular to the traverse lines in an east-west direction (90° Azimuth). The northern block had a tie line spacing of 500 meters, while the southern block tie lines were flown at a spacing of 550 meters.

Where possible, the helicopter maintained a mean terrain clearance of 77 meters, which translated into an average height of 42 meters above ground for the bird-mounted VTEM system and 62 meters for the magnetic sensor.

The survey was flown using a Euro copter Aerospatiale 350 B2+, registration C-FBTW. The helicopter was operated by Gateway Helicopters Ltd. Details of the survey specifications may be found in Section 2 of this report.

1.3 Data Processing and Final Products

Data compilation and processing were carried out by the application of Geosoft OASIS Montaj and programs proprietary to Geotech Ltd.

Databases, grids and maps of final products are presented to Klondike Silver Corp.

The survey report describes the procedures for data acquisition, processing, final image presentation and the specifications for the digital data set.

1.4 Topographic Relief and Cultural Features

The Nickel South Extension blocks are located in Northern Ontario approximately 178 km north of Sudbury and 50 km south-south-east of the Town of Timmins, Ontario. Access by road is provided by rural roads heading south-east out of Timmins, Ontario. Appendix A depicts the survey location in Ontario. The block is covered by NTS 042A02 and 042A03 sheets of the National Topographic Survey of Canada.

Topographically, the survey area exhibits a moderate relief, with an elevation range of 284 meters to 440 meters above sea level. The area exhibits several lakes, rivers and marshy regions. Appendix A depicts the flight path over the topology.

Some power lines activity is detected by the 60 Hz power line monitor. Special care is also recommended in identifying cultural features from other sources that might be recorded in the data.

2. DATA ACQUISITION

2.1 Survey Area

The survey block (see location map, Appendix A) and general flight specifications are as follows:

Table 1 - Survey block

Survey block	Line spacing (m)	Area (Km ²)	Number of Lines	Line Km's	Flight Direction	Line Number
NS1	75	81.47	194	1082.31	N0°E / N180°E	1010 - 2940
	500		13	164.76	N90°E / N270°E	4010 - 4140
NS2	75	6.89	29	88.43	N0°E / N180°E	6010 - 6290
	550		3	9.15	N90°E / N270°E	6900 - 6920

Survey block boundaries co-ordinates are provided in Appendix B.

2.2 Survey Operations

Survey operations were based at the Howard Johnson Hotel in Timmins, Ontario for the acquisition phase of the survey. Nickel South Extensions were flown as part of a larger survey on behalf of Klondike Silver Corp.

The following table shows the timing of the flying.

Table 2 - Survey schedule

Date	Flight #	Flown KM	Block	Crew location	Comments
16-Jan-08	23, 24	121.3	SOUTH. EXT. 1	Timmins, Ontario	Production began
17-Jan-08				Timmins, Ontario	No production – due to weather
18-Jan-08				Timmins, Ontario	No production – due to weather
19-Jan-08	25 - 27	269.2	SOUTH. EXT. 1	Timmins, Ontario	Production
20-Jan-08	28 - 31	315.2	SOUTH. EXT. 1	Timmins, Ontario	Production
21-Jan-08	32 - 35	354.7	SOUTH. EXT. 1	Timmins, Ontario	Production
22-Jan-08	36 - 39	246.4	SOUTH. EXT. 1, 2	Timmins, Ontario	Production and re-flights
23-Jan-08	40 - 43	37.8	SOUTH. EXT. 2	Timmins, Ontario	Production, block complete

2.3 Flight Specifications

The nominal EM sensor terrain clearance was 42 m (EM bird height above ground, i.e. helicopter is maintained 77 m above ground). Nominal survey speed was 75 km/hour. The data recording rates of the data acquisition was 0.1 second for electromagnetics and magnetometer, 0.2 second for altimeter and GPS. This translates to a geophysical reading about every 2 meters along flight track. Navigation was assisted by a GPS receiver and data acquisition system, which reports GPS co-ordinates as latitude/longitude and directs the pilot over a pre-programmed survey grid.

The operator was responsible for monitoring of the system integrity. He also maintained a detailed flight log during the survey, tracking the times of the flight as well as any unusual geophysical or topographic feature.

On return of the aircrew to the base camp the survey data was transferred from a compact flash card (PCMCIA) to the data processing computer.

2.4 Aircraft and Equipment

2.4.1 Survey Aircraft

The survey was flown using a Euro copter Aerospatiale 350 B2+, registration C-FBTW. The helicopter was operated by Gateway Helicopters Ltd. Installation of the geophysical and ancillary equipment was carried out by Geotech Ltd.

2.4.2 Electromagnetic System

The electromagnetic system was a Geotech Time Domain EM (VTEM) system. The configuration is as indicated in Figure 1 below.

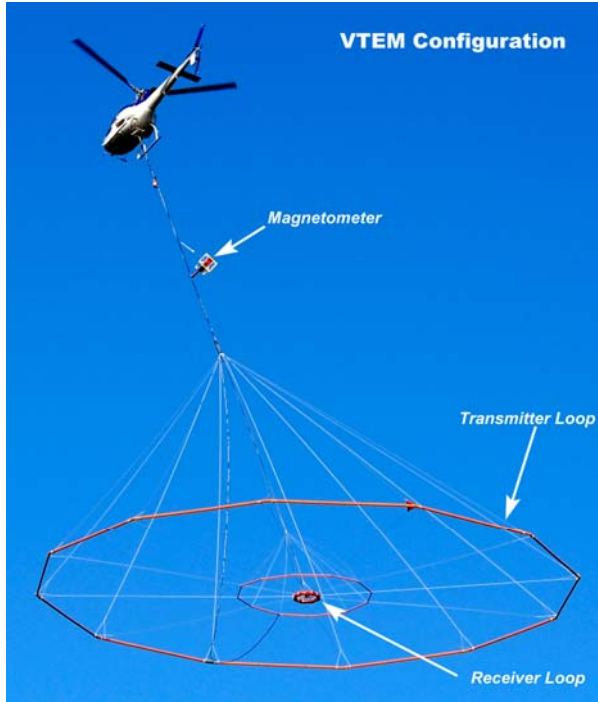


Figure 1 - VTEM Configuration

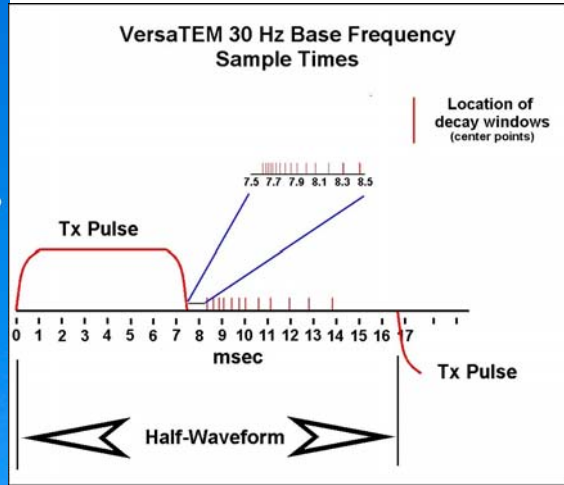


Figure 2 - VTEM Waveform & Sample Times

Receiver and transmitter coils are concentric and Z-direction oriented. The receiver decay recording scheme is shown diagrammatically in Figure 2.

Twenty-four measurement gates were used in the range from 120 μ s to 6578 μ s, as shown in Table 3.

Table 3 – Decay Sampling Scheme

VTEM Decay Sampling scheme				
Array	(Microseconds)			
Index	Time Gate	Start	End	Width
10	120	110	131	21
11	141	131	154	24
12	167	154	183	29
13	198	183	216	34
14	234	216	258	42
15	281	258	310	53
16	339	310	373	63
17	406	373	445	73
18	484	445	529	84
19	573	529	628	99
20	682	628	750	123
21	818	750	896	146
22	974	896	1063	167
23	1151	1063	1261	198
24	1370	1261	1506	245
25	1641	1506	1797	292
26	1953	1797	2130	333
27	2307	2130	2526	396
28	2745	2526	3016	490
29	3286	3016	3599	583
30	3911	3599	4266	667
31	4620	4266	5058	792
32	5495	5058	6037	979
33	6578	6037	7203	1167

VTEM system parameters

Transmitter Coil

- Transmitter coil diameter: 26 m
- Number of turns: 4
- Transmitter frequency: 30 Hz
- Peak current: 220 A
- Pulse width: 7.3 ms
- Duty cycle: 44%
- Peak dipole moment: 466,900 NIA

Receiver Coil

- Receiver coil diameter: 1.2 m
- Number of turns: 100
- Effective coil area: 113.1 m²
- Wave form shape: trapezoid.
- Sampling frequency: 10 Hz

The EM bird was towed 42 m below the helicopter. Recording sampling rate was 10 samples per second. A 60 Hz power line monitor data is also recorded.

2.4.3 Airborne magnetometer

The magnetic sensor utilized for the survey was a Geometrics optically pumped cesium vapour magnetic field sensor, mounted in a separated bird, towed 15 meters below the helicopter, as shown in Figure 1. The sensitivity of the magnetic sensor is 0.02 nanoTesla (nT) at a sampling interval of 0.1 seconds. The magnetometer sends the measured magnetic field strength as nanoTeslas to the data acquisition system via the RS-232 port.

2.4.4 Radar Altimeter

A Terra TRA 3000/TRI 40 radar altimeter was used to record terrain clearance. The antenna was mounted beneath the bubble of the helicopter cockpit.

2.4.5 GPS Navigation System

The navigation system used was a Geotech PC based navigation system utilizing a NovAtel's WAAS enable OEM4-G2-3151W GPS receiver, Geotech navigate software, a full screen display with controls in front of the pilot to direct the flight and an NovAtel GPS antenna mounted on the helicopter tail. The co-ordinates of the block were set-up prior to the survey and the information was fed into the airborne navigation system.

2.4.6 Digital Acquisition System

A Geotech data acquisition system recorded the digital survey data on an internal compact flash card. Data is displayed on an LCD screen as traces to allow the operator to monitor the integrity of the system. The data type and sampling interval as provided in table 4.

Table 4 – Acquisition Sampling Rates

DATA TYPE	SAMPLING
TDEM	0.1 sec
Magnetometer	0.1 sec
GPS Position	0.2 sec
RadarAltimeter	0.2 sec

2.4.7 Base Station

A combine magnetometer/GPS base station was utilized on this project. A Geometrics Cesium vapour magnetometer was used as a magnetic sensor with a sensitivity of 0.001 nT. The base station was recording the magnetic field together with the GPS time at 1 Hz on a base station computer.

The base station magnetometer sensor was installed in Timmins, Ontario away from electric transmission lines and moving ferrous objects such as motor vehicles. The base station data was backed-up to the data processing computer at the end of each survey day.

3. PERSONNEL

The following Geotech Ltd. personnel were involved in the project.

Field

Project manager:	Harish Kumar
Field Operations manager:	Shawn Grant
Crew chief:	Kyle Corriveau
Operator:	Kevin Boyer

The survey pilot and the mechanic engineer were employed directly by the helicopter operator – Gateway Helicopters Ltd

Pilots:	Bruno Prieur Richard Arnold
Engineer:	Bruno Prieur

Office

Data Processing/Report:	Marta Orta/George Lev
GIS Specialist:	Eric Steffler

Data acquisition and processing phases were carried out under the supervision of Andrei Bagrianski, Surveys Manager. Overall management of the project was undertaken by Edward Morrison, President, Geotech Ltd.

4. DATA PROCESSING AND PRESENTATION

4.1 Flight Path

The flight path, recorded by the acquisition program as WGS 84 latitude/longitude, was converted into NAD83, UTM17N coordinate system in Oasis Montaj.

The flight path was drawn using linear interpolation between x,y positions from the navigation system. Positions are updated every second and expressed as UTM eastings (x) and UTM northings (y).

4.2 Electromagnetic Data

A three stage digital filtering process was used to reject major sferic events and to reduce system noise. Local sferic activity can produce sharp, large amplitude events that cannot be removed by conventional filtering procedures. Smoothing or stacking will reduce their amplitude but leave a broader residual response that can be confused with geological phenomena. To avoid this possibility, a computer algorithm searches out and rejects the major sferic events. The filter used was a 16 point non-linear filter.

The signal to noise ratio was further improved by the application of a low pass linear digital filter. This filter has zero phase shift which prevents any lag or peak displacement from occurring, and it suppresses only variations with a wavelength less than about 1 second or 20 metres. This filter is a symmetrical 1 sec linear filter.

The results are presented as stacked profiles of EM voltages for the time gates, in linear - logarithmic scale for both B-field and dB/dt response. B-field time channel recorded 1.151 milliseconds after the termination of the impulse is also presented as contour colour image.

Generalized modeling results of VTEM data, written by Geophysicist Roger Barlow, are shown in Appendix E.

Graphical representation of the VTEM output voltage of the receiver coil and the transmitter current is shown in Appendix C.

4.3 **Magnetic Data**

The processing of the magnetic data involved the correction for diurnal variations by using the digitally recorded ground base station magnetic values. The base station magnetometer data was edited and merged into the Geosoft GDB database on a daily basis. The aeromagnetic data was corrected for diurnal variations by subtracting the observed magnetic base station deviations.

Tie line levelling was carried out by adjusting intersection points along traverse lines. A micro-levelling procedure was applied to remove persistent low-amplitude components of flight-line noise remaining in the data.

The corrected magnetic data was interpolated between survey lines using a random point gridding method to yield x-y grid values for a standard grid cell size of approximately 0.2 cm at the mapping scale. The Minimum Curvature algorithm was used to interpolate values onto a rectangular regular spaced grid.

The second order of the vertical magnetic derivative was calculated using the Fast Fourier Transformation algorithm.

5. DELIVERABLES

5.1 Survey Report

The survey report describes the data acquisition, processing, and final presentation of the survey results.

The survey report is provided in two paper copies and digitally in PDF format.

5.2 Maps

Final maps were produced at a scale of 1:20,000. The coordinate/projection system used was NAD83, UTM zone 17 north. All maps show the flight path trace and topographic data. Latitude and longitude are also noted on maps.

The preliminary and final results of the survey are presented as EM profiles, a late-time gate gridded EM channel and a colour magnetic contour map. The following maps are presented on paper;

- dB/dt profiles, Time Gates 0.234 – 6.578 ms in linear - logarithmic scale
- B-field profiles, Time Gates 0.234 – 6.578 ms in linear - logarithmic scale
- Total Magnetic Intensity contours and colour image
- B-field time channel 1.151 ms contours and color image

5.3 Digital Data

- Five (5) copies of the data and Maps on CD-ROM were prepared to accompany the report. Each CD-ROM contains a digital file of the line data in GDB Geosoft Montaj format as well as the maps in Geosoft Montaj Map format. A *readme.txt* file may be found on the CD-ROM that describes the contents in more detail.
- Five (5) copies of CD-ROMs were prepared.

There are two (2) main directories,

Data contains databases, grids and maps, as described below.

Report contains a copy of the report and appendices in PDF format.

Databases in Geosoft GDB format, containing the channels listed in Table 5.

Table 5 – Geosoft GDB Data Format

Channel Name	Description
X:	X positional data (meters – WGS84, UTM zone 17 north)
Y:	Y positional data (meters – WGS84, UTM zone 17 north)
Z:	GPS antenna elevation (meters - ASL)
Radar:	Helicopter terrain clearance from radar altimeter (meters - AGL)
DEM:	Digital elevation model (meters)
Gtime1:	GPS time (seconds of the day)
Mag1:	Raw Total Magnetic field data (nT)
Basemag:	Magnetic diurnal variation data (nT)
Mag2:	Total Magnetic field diurnal variation corrected data (nT)
Mag3:	Leveled Total Magnetic field data (nT)
SF[10]:	dB/dt 120 microsecond time channel ($pV/A/m^4$)
SF[11]:	dB/dt 141 microsecond time channel ($pV/A/m^4$)
SF[12]:	dB/dt 167 microsecond time channel ($pV/A/m^4$)
SF[13]:	dB/dt 198 microsecond time channel ($pV/A/m^4$)
SF[14]:	dB/dt 234 microsecond time channel ($pV/A/m^4$)
SF[15]:	dB/dt 281 microsecond time channel ($pV/A/m^4$)
SF[16]:	dB/dt 339 microsecond time channel ($pV/A/m^4$)
SF[17]:	dB/dt 406 microsecond time channel ($pV/A/m^4$)
SF[18]:	dB/dt 484 microsecond time channel ($pV/A/m^4$)
SF[19]:	dB/dt 573 microsecond time channel ($pV/A/m^4$)
SF[20]:	dB/dt 682 microsecond time channel ($pV/A/m^4$)
SF[21]:	dB/dt 818 microsecond time channel ($pV/A/m^4$)
SF[22]:	dB/dt 974 microsecond time channel ($pV/A/m^4$)
SF[23]:	dB/dt 1151 microsecond time channel ($pV/A/m^4$)
SF[24]:	dB/dt 1370 microsecond time channel ($pV/A/m^4$)
SF[25]:	dB/dt 1641 microsecond time channel ($pV/A/m^4$)
SF[26]:	dB/dt 1953 microsecond time channel ($pV/A/m^4$)
SF[27]:	dB/dt 2307 microsecond time channel ($pV/A/m^4$)
SF[28]:	dB/dt 2745 microsecond time channel ($pV/A/m^4$)
SF[29]:	dB/dt 3286 microsecond time channel ($pV/A/m^4$)
SF[30]:	dB/dt 3911 microsecond time channel ($pV/A/m^4$)
SF[31]:	dB/dt 4620 microsecond time channel ($pV/A/m^4$)
SF[32]:	dB/dt 5495 microsecond time channel ($pV/A/m^4$)
SF[33]:	dB/dt 6578 microsecond time channel ($pV/A/m^4$)
BF[10]:	B-field 120 microsecond time channel ($pV*ms)/(A*m^4$)
BF[11]:	B-field 141 microsecond time channel ($pV*ms)/(A*m^4$)
BF[12]:	B-field 167 microsecond time channel ($pV*ms)/(A*m^4$)

Channel Name	Description
BF[13]:	B-field 198 microsecond time channel (pV*ms)/(A*m ⁴)
BF[14]:	B-field 234 microsecond time channel (pV*ms)/(A*m ⁴)
BF[15]:	B-field 281 microsecond time channel (pV*ms)/(A*m ⁴)
BF[16]:	B-field 339 microsecond time channel (pV*ms)/(A*m ⁴)
BF[17]:	B-field 406 microsecond time channel (pV*ms)/(A*m ⁴)
BF[18]:	B-field 484 microsecond time channel (pV*ms)/(A*m ⁴)
BF[19]:	B-field 573 microsecond time channel (pV*ms)/(A*m ⁴)
BF[20]:	B-field 682 microsecond time channel (pV*ms)/(A*m ⁴)
BF[21]:	B-field 818 microsecond time channel (pV*ms)/(A*m ⁴)
BF[22]:	B-field 974 microsecond time channel (pV*ms)/(A*m ⁴)
BF[23]:	B-field 1151 microsecond time channel (pV*ms)/(A*m ⁴)
BF[24]:	B-field 1370 microsecond time channel (pV*ms)/(A*m ⁴)
BF[25]:	B-field 1641 microsecond time channel (pV*ms)/(A*m ⁴)
BF[26]:	B-field 1953 microsecond time channel (pV*ms)/(A*m ⁴)
BF[27]:	B-field 2307 microsecond time channel (pV*ms)/(A*m ⁴)
BF[28]:	B-field 2745 microsecond time channel (pV*ms)/(A*m ⁴)
BF[29]:	B-field 3286 microsecond time channel (pV*ms)/(A*m ⁴)
BF[30]:	B-field 3911 microsecond time channel (pV*ms)/(A*m ⁴)
BF[31]:	B-field 4620 microsecond time channel (pV*ms)/(A*m ⁴)
BF[32]:	B-field 5495 microsecond time channel (pV*ms)/(A*m ⁴)
BF[33]:	B-field 6578 microsecond time channel (pV*ms)/(A*m ⁴)
DF[10]:	dB/dt 120 microsecond time channel (pV/A/m4)
DF[11]:	dB/dt 141 microsecond time channel (pV/A/m4)
DF[12]:	dB/dt 167 microsecond time channel (pV/A/m4)
DF[13]:	dB/dt 198 microsecond time channel (pV/A/m4)
DF[14]:	dB/dt 234 microsecond time channel (pV/A/m4)
DF[15]:	dB/dt 281 microsecond time channel (pV/A/m4)
DF[16]:	dB/dt 339 microsecond time channel (pV/A/m4)
DF[17]:	dB/dt 406 microsecond time channel (pV/A/m4)
DF[18]:	dB/dt 484 microsecond time channel (pV/A/m4)
DF[19]:	dB/dt 573 microsecond time channel (pV/A/m4)
DF[20]:	dB/dt 682 microsecond time channel (pV/A/m4)
DF[21]:	dB/dt 818 microsecond time channel (pV/A/m4)
DF[22]:	dB/dt 974 microsecond time channel (pV/A/m4)
DF[23]:	dB/dt 1151 microsecond time channel (pV/A/m4)
DF[24]:	dB/dt 1370 microsecond time channel (pV/A/m4)
DF[25]:	dB/dt 1641 microsecond time channel (pV/A/m4)
DF[26]:	dB/dt 1953 microsecond time channel (pV/A/m4)
DF[27]:	dB/dt 2307 microsecond time channel (pV/A/m4)

Channel Name	Description
DF[28]:	dB/dt 2745 microsecond time channel (pV/A/m4)
DF[29]:	dB/dt 3286 microsecond time channel (pV/A/m4)
DF[30]:	dB/dt 3911 microsecond time channel (pV/A/m4)
DF[31]:	dB/dt 4620 microsecond time channel (pV/A/m4)
DF[32]:	dB/dt 5495 microsecond time channel (pV/A/m4)
DF[33]:	dB/dt 6578 microsecond time channel (pV/A/m4)
PLM:	Power line monitor

Electromagnetic B-field and dB/dt data is found in array channel format between indexes 10 – 33, as described above.

- Database VTEM_waveform.gdb in Geosoft GDB format, containing the following channels:

Time: Sampling rate interval, 7.3 microseconds
 Volt: output voltage of the receiver coil (volt)

- Grids in Geosoft GRD format, as follow,

NS_BF1151: B-field channel 1.151 ms (pV*ms)/(A*m4)
 NS_magfin: Total magnetic intensity (nT)
 NS_VD2: Second vertical magnetic derivative (nT/m²)
 NS_DEM: Digital elevation model (m)

A Geosoft .GRD file has a .GI metadata file associated with it, containing grid projection information. A grid cell size of 10 meters was used.

- Maps at 1:20,000 scale in Geosoft MAP format, as follow,

Bfield_Nickel_South_Extension_20K: B-field profiles, time channels 0.234 – 6.578 ms.

dBdt_Nickel_South_Extension_20K: dB/dt profiles, time channels 0.234 – 6.578 ms.

BF1151_Nickel_South_Extension_20K: B-field time channel 1.151 ms contours and color image.

TMI_Nickel_South_Extension_20K: Total Magnetic intensity contours and colour image.

- 1:50k topographic vectors were taken from the NRCAN Geogratis database at, <http://geogratis.gc.ca/geogratis/en/index.html>. These files are unedited and may have artefacts and inconsistencies where two adjacent map sheets join.
- Google Earth file *Flight_Path.kmz* showing the flight path of the block.
- A readme.txt file describing the content of the digital data, as described above.

Free version of Google Earth software can be downloaded from,
<http://earth.google.com/download-earth.html>

6. CONCLUSIONS

A helicopter-borne versatile time domain electromagnetic (VTEM) geophysical survey has been completed over the Nickel South Extension blocks 1 and 2 near Timmins, Ontario.

The total area coverage is ~88.36 km². Total survey line coverage is 1323 line kilometres. The principal sensors included a Time Domain EM system and a magnetometer. Results have been presented as stacked profiles and contour colour images at a scale of 1:20,000.

Final data processing at the office of Geotech Ltd. in Aurora, Ontario was carried out under the supervision of Andrei Bagrianski, Surveys Manager.

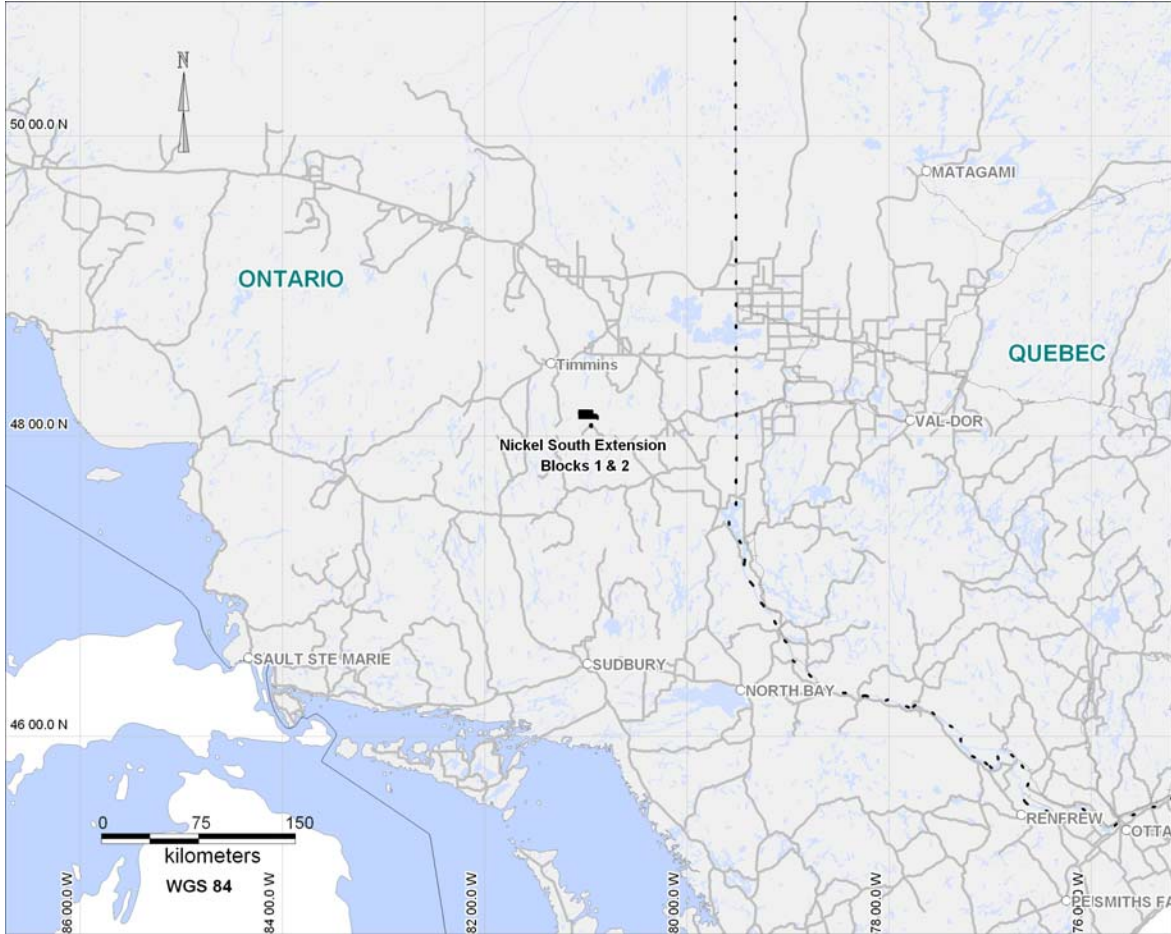
Several EM anomalies were identified. Further investigation is recommended in describing each group of anomalies using modeling techniques and ground verification

Respectfully submitted,

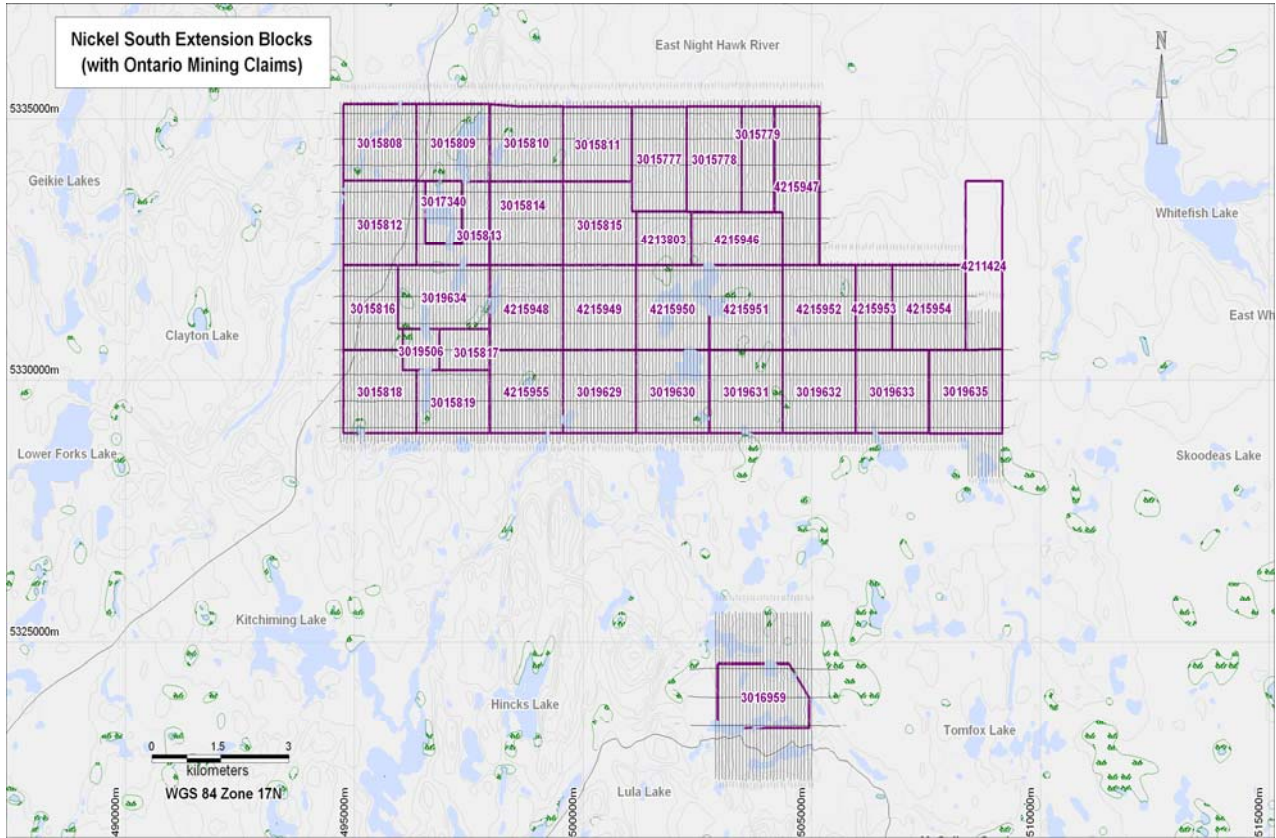
Marta Orta,
Geotech Ltd.
March 2008

APPENDIX A

SURVEY BLOCK LOCATION MAPS



Survey Location Map



Nickel South Extension Blocks flight path with Mining Claims.

APPENDIX B

SURVEY BLOCK COORDINATES

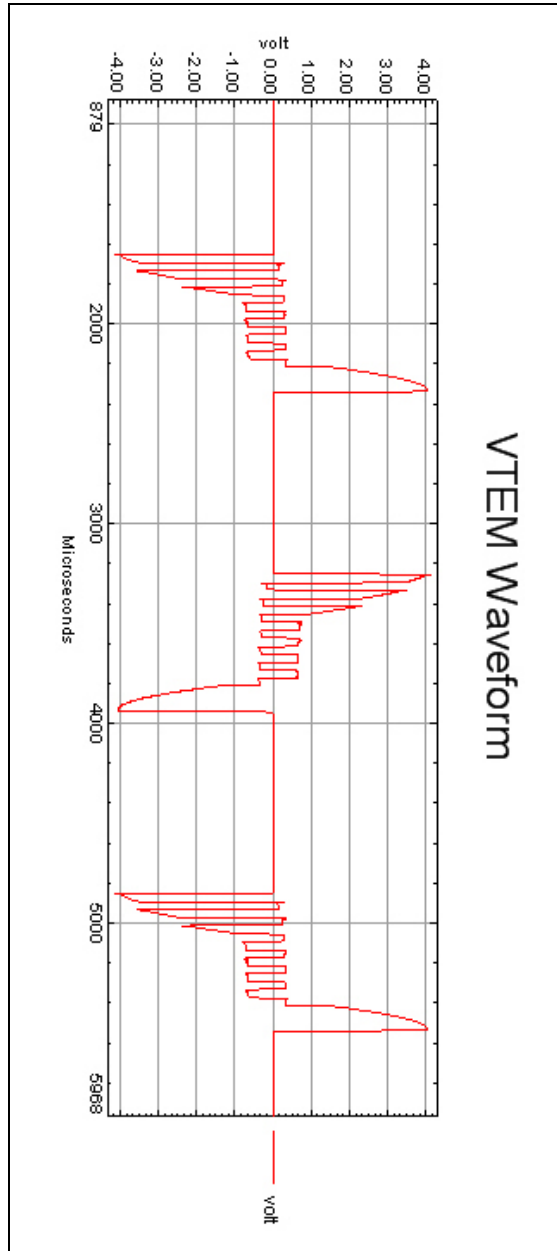
(WGS 84, UTM Zone 17 North)

Large North Block – NS 1	
X	Y
505250	5335300
505250	5332200
508400	5332200
508400	5331300
509220	5331300
509220	5328200
508390	5328200
508390	5328850

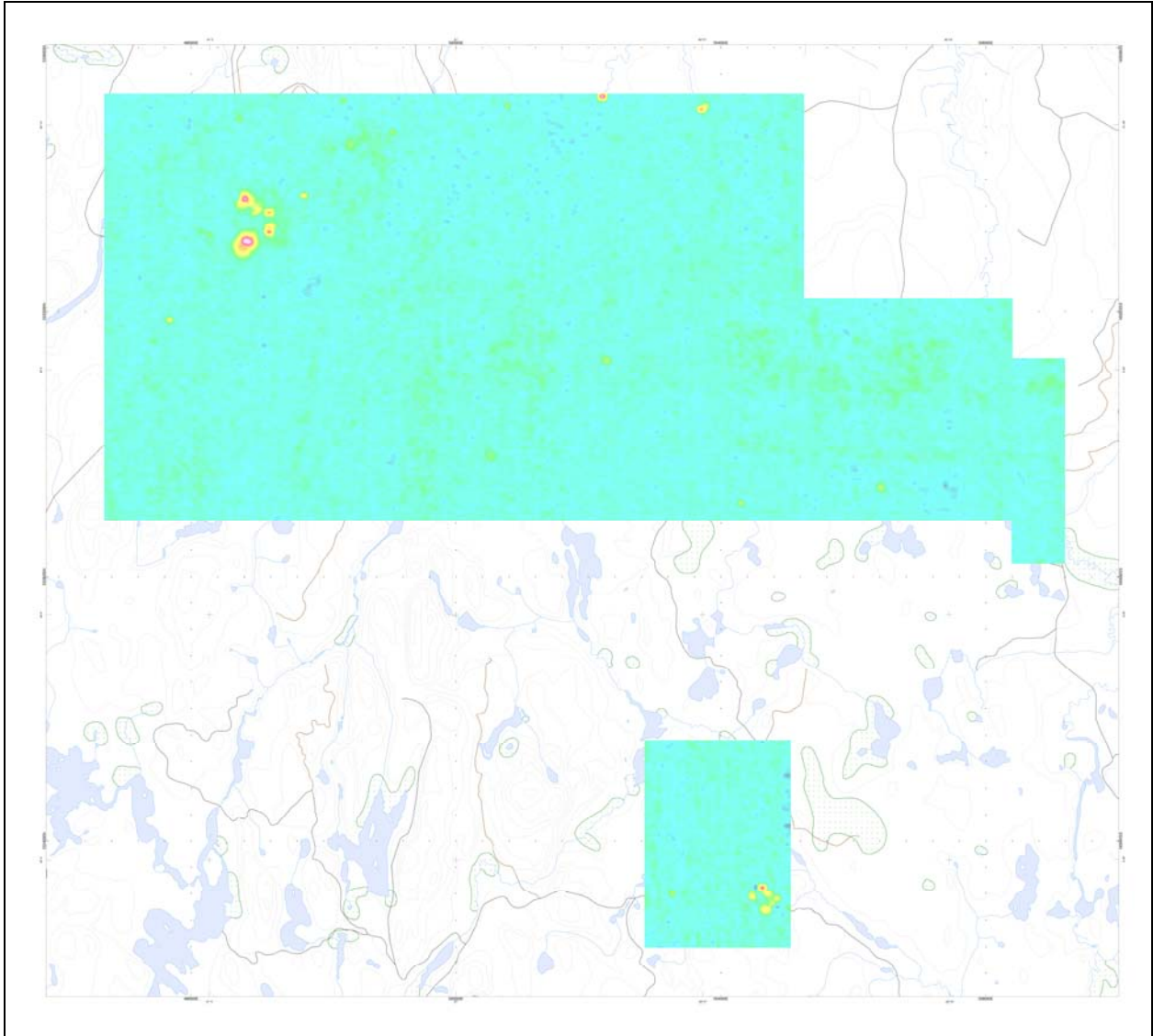
Small South Block – NS2	
X	Y
505000	5323300
502900	5323300
502900	5324600
505000	5324600

APPENDIX C

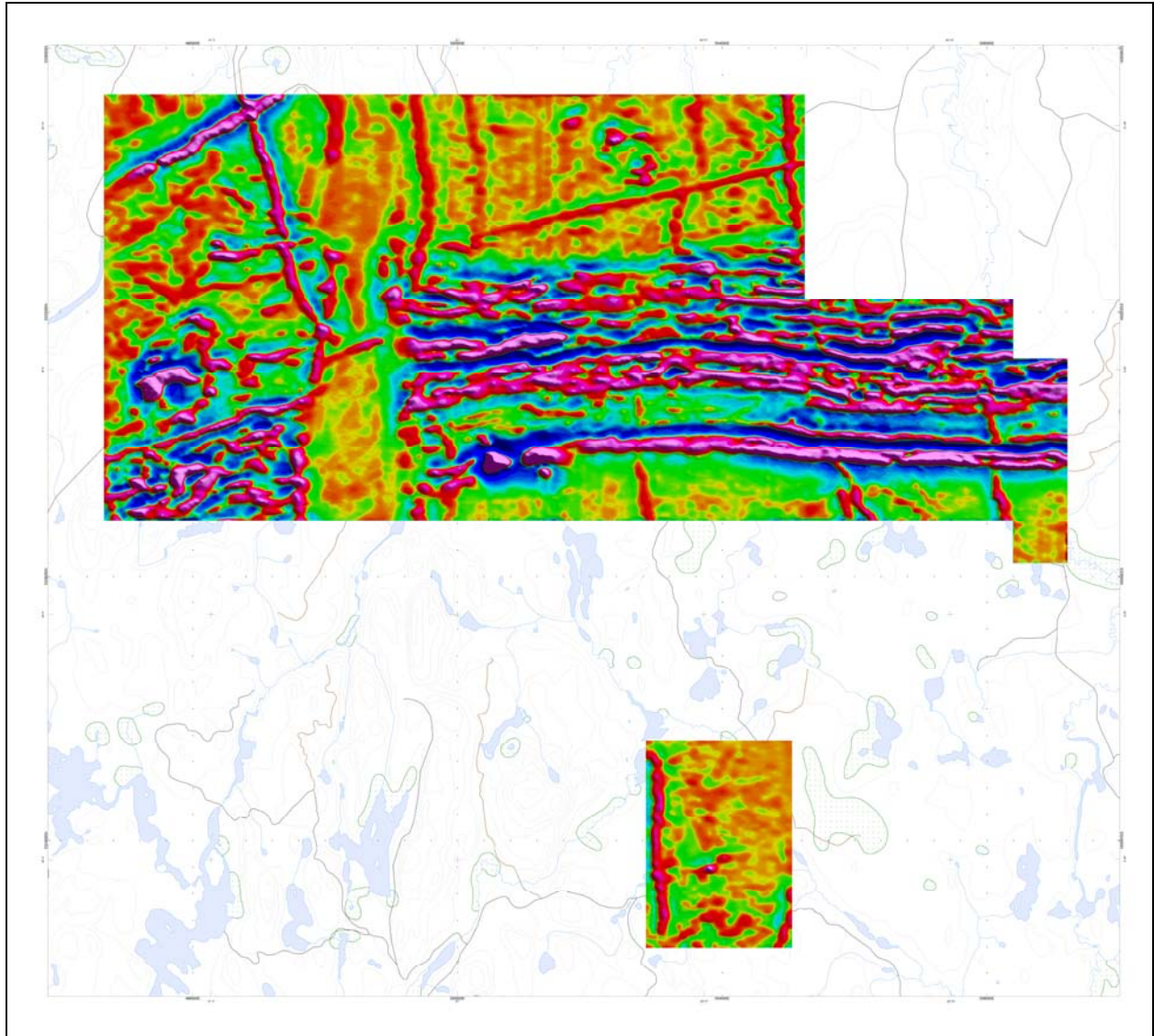
VTEM WAVEFORM



APPENDIX D
GEOPHYSICAL MAPS



VTEM B-Field Time Gate 1.151 ms.



Second Vertical Magnetic Derivative

APPENDIX E

GENERALIZED MODELING RESULTS OF THE VTEM SYSTEM

Introduction

The VTEM system is based on a concentric or central loop design, whereby, the receiver is positioned at the centre of a 26.1 meters diameter transmitter loop that produces a dipole moment up to 625,000 NIA at peak current. The wave form is a bi-polar, modified square wave with a turn-on and turn-off at each end. With a base frequency of 30 Hz, the duration of each pulse is approximately 7.3 milliseconds followed by an off time where no primary field is present.

During turn-on and turn-off, a time varying field is produced (dB/dt) and an electro-motive force (emf) is created as a finite impulse response. A current ring around the transmitter loop moves outward and downward as time progresses. When conductive rocks and mineralization are encountered, a secondary field is created by mutual induction and measured by the receiver at the centre of the transmitter loop.

Measurements are made during the off-time, when only the secondary field (representing the conductive targets encountered in the ground) is present.

Efficient modeling of the results can be carried out on regularly shaped geometries, thus yielding close approximations to the parameters of the measured targets. The following is a description of a series of common models made for the purpose of promoting a general understanding of the measured results.

Variation of Plate Depth

Geometries represented by plates of different strike length, depth extent, dip, plunge and depth below surface can be varied with characteristic parameters like conductance of the target, conductance of the host and conductivity/thickness and thickness of the overburden layer.

Diagrammatic models for a vertical plate are shown in figures A and G at two different depths, all other parameters remaining constant. With this transmitter-receiver geometry, the classic **M** shaped response is generated. Figure A shows a plate where the top is near surface. Here, amplitudes of the dual peaks are higher and symmetrical with the zero centre positioned directly above the plate. Most important is the separation distance of the peaks. This distance is small when the plate is near surface and widens with a linear relationship as the plate (depth to top) increases. Figure G shows a much deeper plate where the separation distance of the peaks is much wider and the amplitudes of the channels have decreased.

Variation of Plate Dip

As the plate dips and departs from the vertical position, the peaks become asymmetrical. Figure B shows a near surface plate dipping 80° . Note that the direction of dip is toward the high shoulder of the response and the top of the plate remains under the centre minimum.

As the dip increases, the aspect ratio (Min/Max) decreases and this aspect ratio can be used as an empirical guide to dip angles from near 90° to about 30° . The method is not sensitive enough where dips are less than about 30° . Figure E shows a plate dipping 45° and, at this angle, the minimum shoulder starts to vanish. In Figure D, a flat lying plate is shown, relatively near surface. Note that the twin peak anomaly has been replaced by a symmetrical shape with large, bell shaped, channel amplitudes which decay relative to the conductance of the plate.

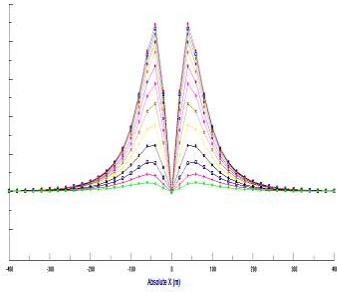
Figure H shows a special case where two plates are positioned to represent a synclinal structure. Note that the main characteristic to remember is the centre amplitudes are higher (approximately double) compared to the high shoulder of a single plate. This model is very representative of tightly folded formations where the conductors were once flat lying.

Variation of Prism Depth

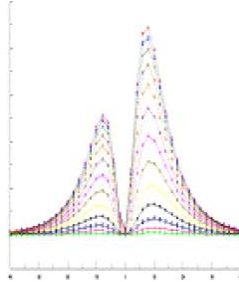
Finally, with prism models, another algorithm is required to represent current on the plate. A plate model is considered to be infinitely thin with respect to thickness and incapable of representing the current in the thickness dimension. A prism model is constructed to deal with this problem, thereby, representing the thickness of the body more accurately.

Figures C, F and I show the same prism at increasing depths. Aside from an expected decrease in amplitude, the side lobes of the anomaly show a widening with deeper prism depths of the bell shaped early time channels.

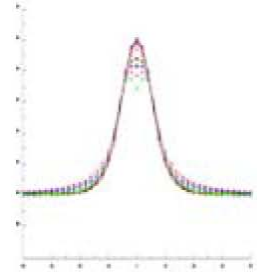
A



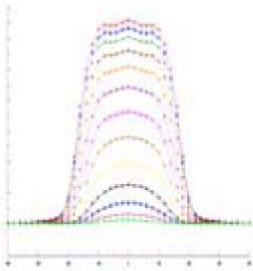
B



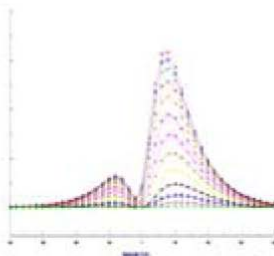
C



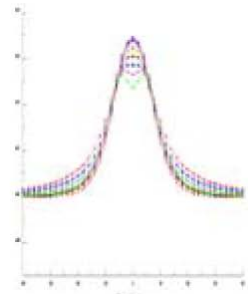
D

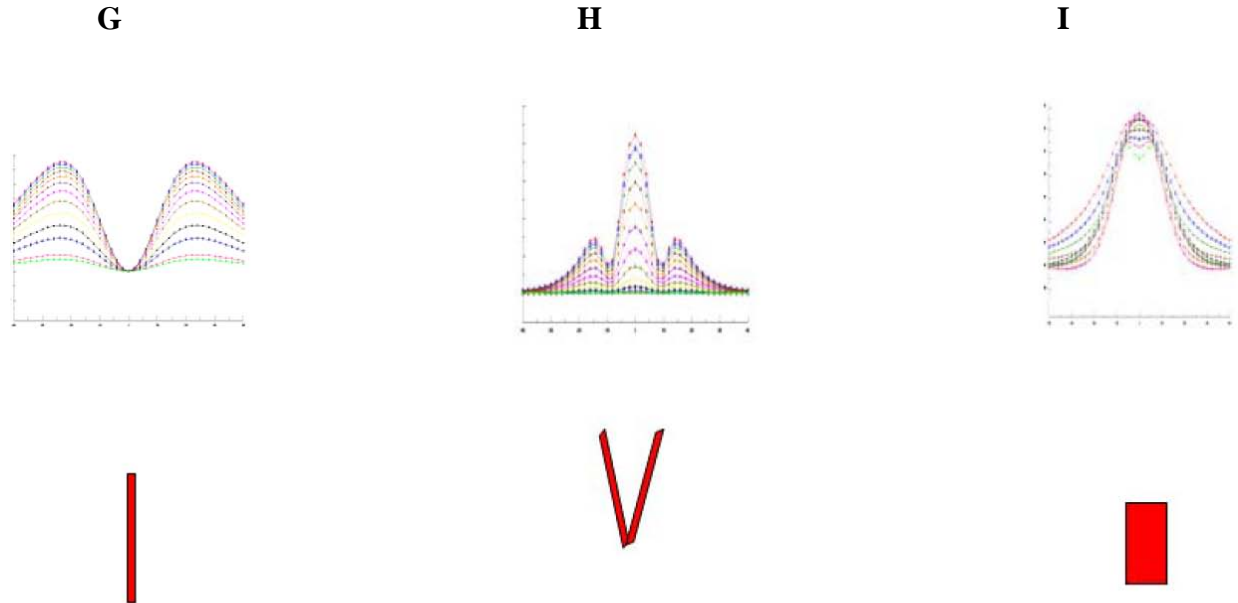


E



F





General Modeling Concepts

A set of models has been produced for the Geotech VTEM® system with explanation notes (see models A to I above). The reader is encouraged to review these models, so as to get a general understanding of the responses as they apply to survey results. While these models do not begin to cover all possibilities, they give a general perspective on the simple and most commonly encountered anomalies.

When producing these models, a few key points were observed and are worth noting as follows:

- For near vertical and vertical plate models, the top of the conductor is always located directly under the centre low point between the two shoulders in the classic **M** shaped response.
- As the plate is positioned at an increasing depth to the top, the shoulders of the **M** shaped response, have a greater separation distance.
- When faced with choosing between a flat lying plate and a prism model to represent the target (broad response) some ambiguity is present and caution should be exercised.
- With the concentric loop system and Z-component receiver coil, virtually all types of conductors and most geometries are most always well coupled and a response is generated (see model H). Only concentric loop systems can map this type of target.

The modelling program used to generate the responses was prepared by PetRos Eikon Inc. and is one of a very few that can model a wide range of targets in a conductive half space.

General Interpretation Principals

Magnetics

The total magnetic intensity responses reflect major changes in the magnetite and/or other magnetic minerals content in the underlying rocks and unconsolidated overburden. Precambrian rocks have often been subjected to intense heat and pressure during structural and metamorphic events in their history. Original signatures imprinted on these rocks at the time of formation have, in most cases, been modified, resulting in low magnetic susceptibility values.

The amplitude of magnetic anomalies, relative to the regional background, helps to assist in identifying specific magnetic and non-magnetic rock units (and conductors) related to, for example, mafic flows, mafic to ultramafic intrusives, felsic intrusives, felsic volcanics and/or sediments etc. Obviously, several geological sources can produce the same magnetic response. These ambiguities can be reduced considerably if basic geological information on the area is available to the geophysical interpreter.

In addition to simple amplitude variations, the shape of the response expressed in the wave length and the symmetry or asymmetry, is used to estimate the depth, geometric parameters and magnetization of the anomaly. For example, long narrow magnetic linears usually reflect mafic flows or intrusive dyke features. Large areas with complex magnetic patterns may be produced by intrusive bodies with significant magnetization, flat lying magnetic sills or sedimentary iron formation. Local isolated circular magnetic patterns often represent plug-like igneous intrusives such as kimberlites, pegmatites or volcanic vent areas.

Because the total magnetic intensity (TMI) responses may represent two or more closely spaced bodies within a response, the second derivative of the TMI response may be helpful for distinguishing these complexities. The second derivative is most useful in mapping near surface linears and other subtle magnetic structures that are partially masked by nearby higher amplitude magnetic features. The broad zones of higher magnetic amplitude, however, are severely attenuated in the vertical derivative results. These higher amplitude zones reflect rock units having strong magnetic susceptibility signatures. For this reason, both the TMI and the second derivative maps should be evaluated together.

Theoretically, the second derivative, zero contour or colour delineates the contacts or limits of large sources with near vertical dip and shallow depth to the top. The vertical gradient map also aids in determining contact zones between rocks with a susceptibility contrast, however, different, more complicated rules of thumb apply.

Concentric Loop EM Systems

Concentric systems with horizontal transmitter and receiver antennae produce much larger responses for flat lying conductors as contrasted with vertical plate-like conductors. The amount of current developing on the flat upper surface of targets having a substantial area in this dimension, are the direct result of the effective coupling angle, between the primary magnetic field and the flat surface area. One therefore, must not compare the amplitude/conductance of responses generated from flat lying bodies with those derived from near vertical plates; their ratios will be quite different for similar conductances.

Determining dip angle is very accurate for plates with dip angles greater than 30°. For angles less than 30° to 0°, the sensitivity is low and dips can not be distinguished accurately in the presence of normal survey noise levels.

A plate like body that has near vertical position will display a two shoulder, classic **M** shaped response with a distinctive separation distance between peaks for a given depth to top.

It is sometimes difficult to distinguish between responses associated with the edge effects of flat lying conductors and poorly conductive bedrock conductors. Poorly conductive bedrock conductors having low dip angles will also exhibit responses that may be interpreted as surficial overburden conductors. In some situations, the conductive response has line to line continuity and some magnetic correlation providing possible evidence that the response is related to an actual bedrock source.

The EM interpretation process used, places considerable emphasis on determining an understanding of the general conductive patterns in the area of interest. Each area has different characteristics and these can effectively guide the detailed process used.

The first stage is to determine which time gates are most descriptive of the overall conductance patterns. Maps of the time gates that represent the range of responses can be very informative.

Next, stacking the relevant channels as profiles on the flight path together with the second vertical derivative of the TMI is very helpful in revealing correlations between the EM and Magnetics.

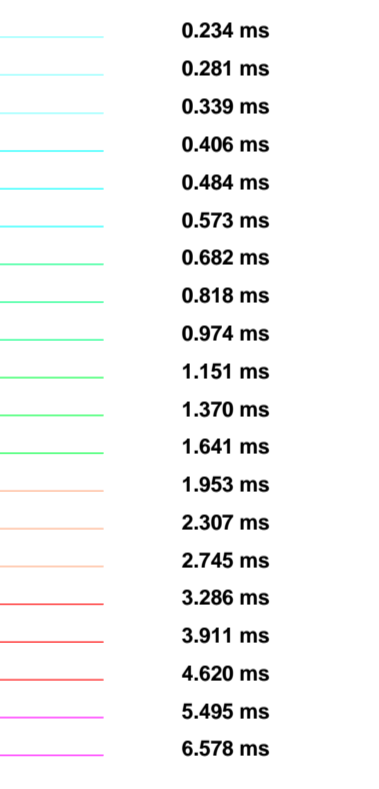
Next, key lines can be profiled as single lines to emphasize specific characteristics of a conductor or the relationship of one conductor to another on the same line. Resistivity Depth sections can be constructed to show the relationship of conductive overburden or conductive bedrock with the conductive anomaly.



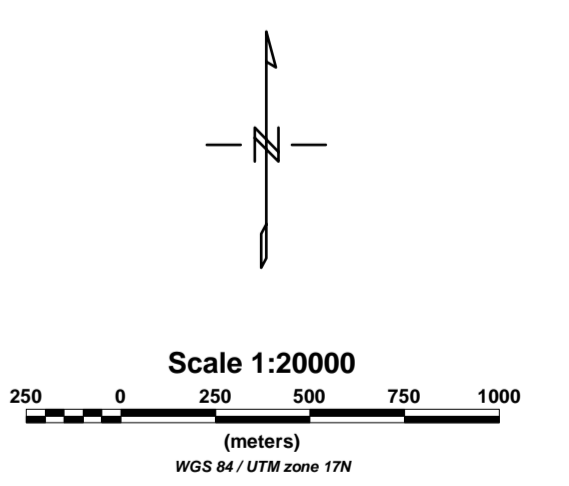
SURVEY SPECIFICATIONS:
 Survey Date: January 16 to 23, 2008
 Survey Base: Timmins, Ontario
 Aircraft: Aerospaciale A-Star 3002A (C-FBTV)
 Nominal Survey Line Spacing: 75 Meters
 Nominal Survey Line Direction: N 0° E
 Nominal Tie Line Spacing: 500 (NS1) & 550 (NS2) Meters
 Nominal Tie Line Direction: N 90° E
 Nominal Terrain Clearance: 77 Meters
 EM Loop: Towed 42 meters beneath the Helicopter
 Magnetic Sensor: Towed 15 meters under the Helicopter

INSTRUMENTS:
 Geotech Time Domain Electromagnetic System (VTEM)
 Geometric: 90° X Geometry
 Transmitter Loop: Diameter 26 Meters, Base Frequency 30 Hz
 Dipole Moment: 469,900 N/A
 Transmitter Wave Form: Triangular, Pulse Width 7.3 ms.
 Geometrics: High Sensitivity Cesium Magnetometer
 Mag Resolution: 0.02 nT at 10 samples/sec
 MAP PROJECTION:
 Datum: WGS 84
 Projection: Universal Transverse Mercator
 Central Meridian: 81°W (Zone 17)
 Central Scale Factor: 0.9996
 False Easting/Northing: 500,000m/0m
 Major Axis: 6378137.000
 Eccentricity: 0.081818191
 NTS: 042A02, 042A03

Profiles scale 1 mm = 0.025 (pVA/m²)
 Linear between 47.0-2 (pVA/m²)
 logarithmic above 0.2 (pVA/m²)



TOPOGRAPHIC LEGEND:
 Contours
 Roads
 Trails
 Rivers & Streams
 Lakes
 Wetlands
 Ontario Mining Claims



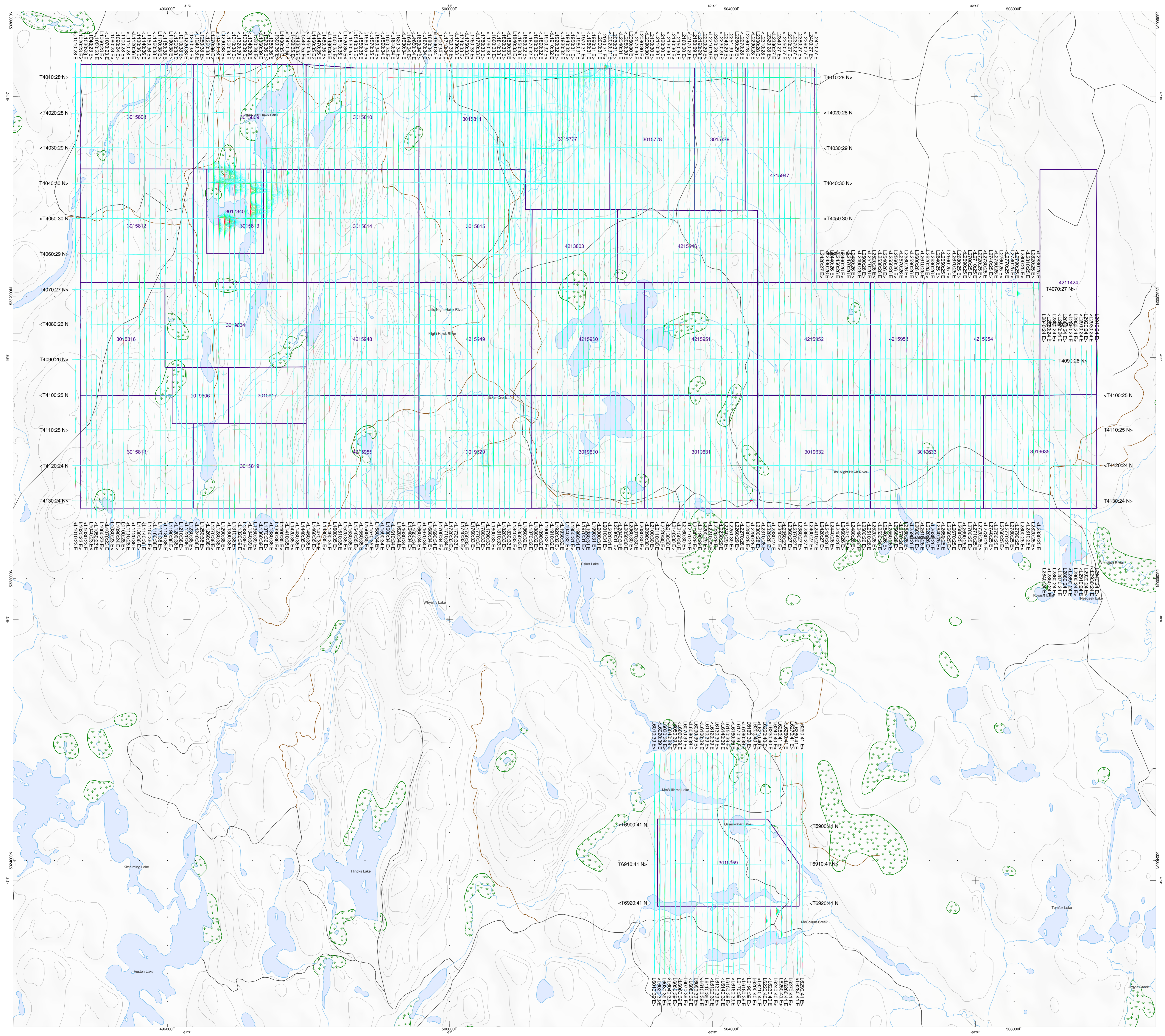
The topographic data base was derived from 1:50,000 NRC (Natural Resources Canada) NTDB data. Background shading is derived from NASA BRTM (Shuttle Radar Topography Mission) data. (Raw data derived from Geocomm.com 1:250,000 Canadian National Topographic database (www.geocomm.ca) (www.geocomm.com))

KLONDIKE SILVER CORP.
 Nickel South Extension Blocks 1 & 2
 Timmins, Ontario, Canada

Geotech VTEM System
 VTEM dB/dt Profiles
 Time Gates 0.234 - 6.578 ms.

Flown and processed by Geotech Ltd.
 245 Industrial Parkway North,
 Aurora, Ontario, Canada L4G 4C4
 www.geotech.ca

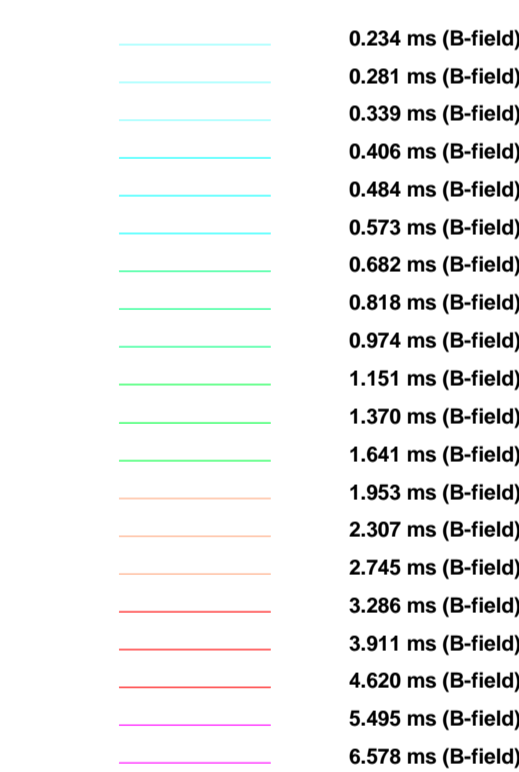
MARCH 2008



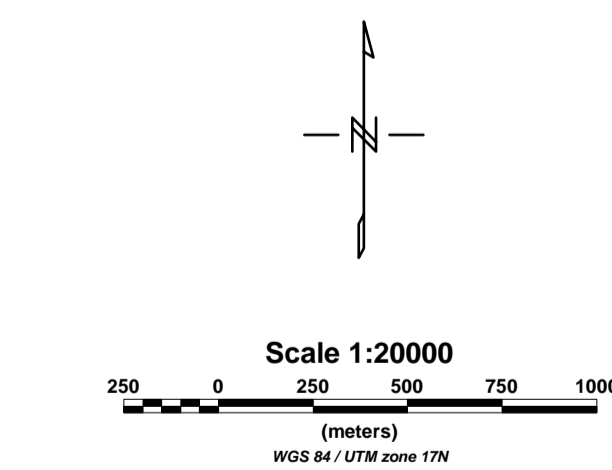


SURVEY SPECIFICATIONS:
 Survey Date: January 16 to 23, 2008
 Survey Base: Timmins, Ontario
 Aircraft: Aerospaciale A-Star 350B2+ (C-FBTW)
 Nominal Survey Line Spacing: 75 Meters
 Nominal Survey Line Direction: N 0° E
 Nominal Tie Line Direction: N 90° E
 Nominal Tie Line Spacing: 500 (NS1) & 550 (NS2) Meters
 Nominal Tilt Line Direction: N 90° E
 Nominal Terrain Clearance: 77 Meters
 EM Loop: Towed 42 meters beneath the Helicopter
 Magnetic Sensor: Towed 15 meters under the Helicopter
INSTRUMENTS:
 Geotech Time Domain Electromagnetic System (VTEM)
 Concentric Rx/Tx Geometry
 Transmitter Loop: Diameter 26 Meters, Base Frequency 30 Hz
 Dipole Moment: 460,000 NA
 Magnetic Wave Form: Trapezoid, Pulse Width 7.3 ms
 Geometric High Sensitivity Cesium Magnetometer
 Map Resolution: 0.02 m/pt at 10 samples/m
MAP PROJECTION:
 Datum: WGS 84
 Projection: Universal Transverse Mercator
 Central Meridian: 81°W (Zone 17)
 Central Scale Factor: 0.9996
 False Easting/Northing: 500,000m/0m
 Map Area: 6378137.000
 Eccentricity: 0.081818191
 NTS: 042A02, 042A03

Profiles scale 1 mm = 0.025 (pVms)/A/m⁴
 (Linear between +/-0.2 (pVms)/A/m⁴
 logarithmic above 0.2 (pVms)/A/m⁴)



TOPOGRAPHIC LEGEND:
 Contours
 Roads
 Trails
 Rivers & Streams
 Lakes
 Wetlands
 Ontario Mining Claims



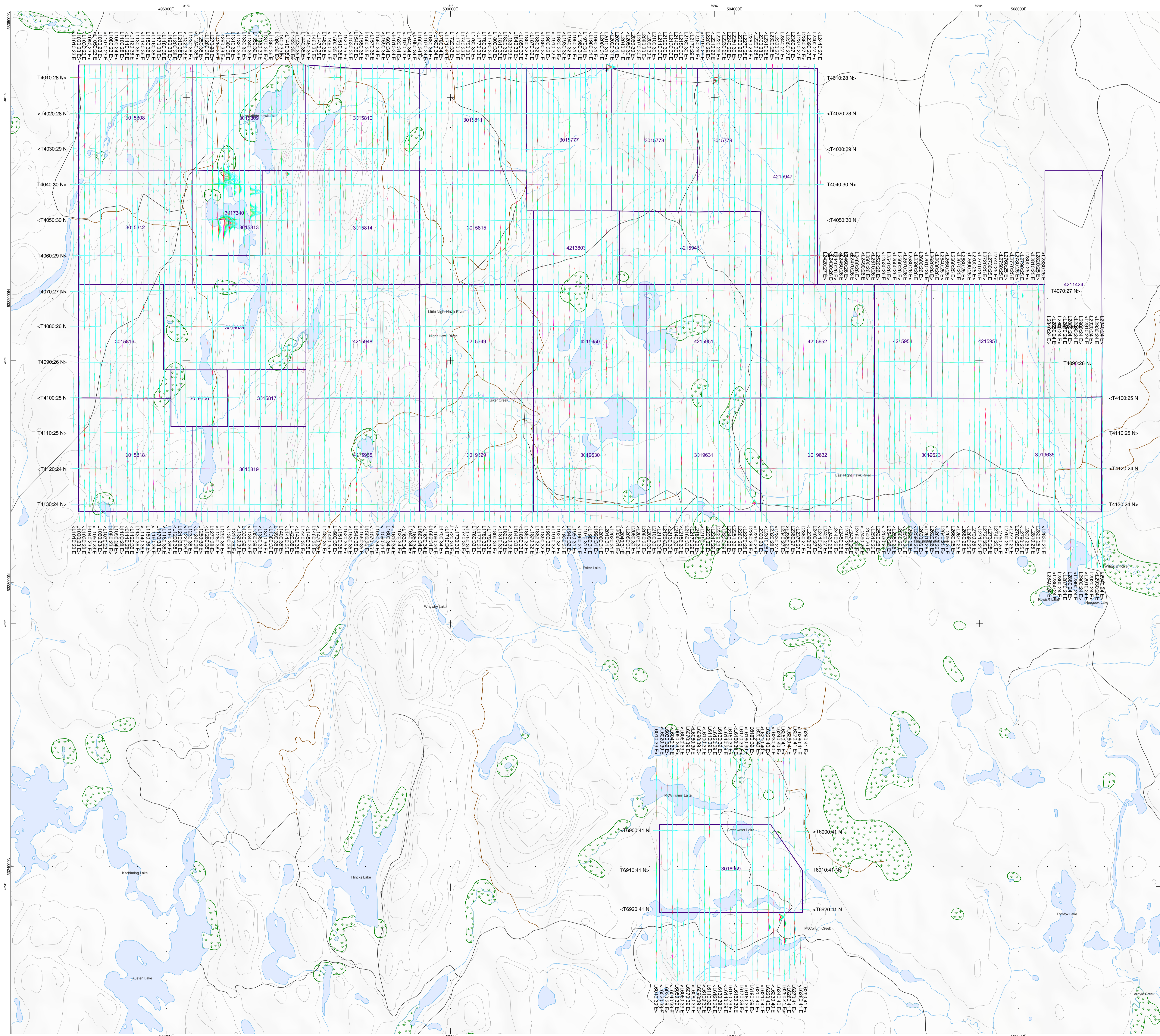
The topographic data base was derived from 1:50,000 NRC (Natural Resources Canada) NTDB data. Background shading is derived from NASA SRTM Shuttle Radar Topography Mission data. Inset data derived from Geocommunities 1:250,000 Canadian National Topographic Database (www.geocomm.com) or www.geocomm.com.

KLONDIKE SILVER CORP.
 Nickel South Extension Blocks 1 & 2
 Timmins, Ontario, Canada

Geotech VTEM System
 VTEM B-Field Profiles
 Time Gates 0.234 - 6.578 ms.

Flown and processed by Geotech Ltd.
 245 Industrial Parkway North,
 Aurora, Ontario, Canada L4G 4C4
 www.geotech.ca

MARCH 2008

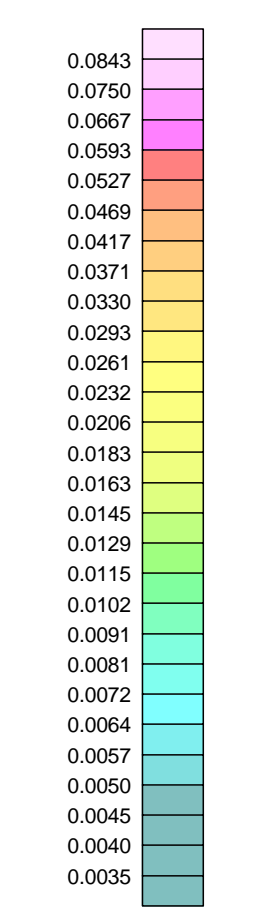




SURVEY SPECIFICATIONS:
 Survey Date: January 16 to 23, 2008
 Survey Base: Timmins, Ontario
 Aircraft: Aerospaciale A-Star 350E/C (C-FBTV)
 Nominal Survey Line Spacing: 75 Meters
 Nominal Survey Line Direction: N 0° E
 Nominal Tie Line Spacing: 500 (NS1) & 550 (NS2) Meters
 Nominal Tie Line Direction: N 90° E
 Nominal Terrain Clearance: 77 Meters
 EM Loop: Towed 42 meters beneath the Helicopter
 Magnetic Sensor: Towed 15 meters under the Helicopter

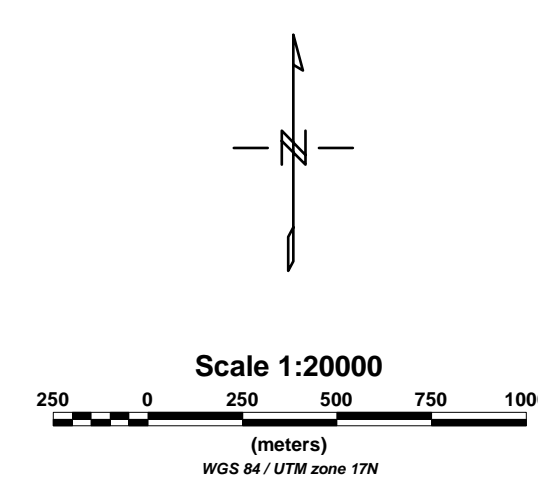
INSTRUMENTS:
 Geotech Time Domain Electromagnetic System (VTEM)
 Coaxial: R/Tx Geometry
 Transmitter Loop: Diameter 26 Meters, Base Frequency 30 Hz
 Dipole Moment: 466,900 N/A
 Transmitter Wave Form: Tripsoid, Pulse Width 7.3 ms.
 Geometrics High Sensitivity Caesium Magnetometer
 Map Resolution: 0.02 m at 10 samples/sec

MAP PROJECTION:
 Datum: NAD83
 Projection: Universal Transverse Mercator
 Central Meridian: 81°W (Zone 17)
 Central Scale Factor: 0.9996
 False Easting/Northing: 500,000m/0m
 Major Axis: 6378137.000
 Eccentricity: 0.081819191
 NTS: 0.00002, 0.00005



Contour intervals:
 0.005 (pV*ms)/(A*m^4)
 0.01 (pV*ms)/(A*m^4)

TOPOGRAPHIC LEGEND:
 Contours
 Roads
 Trails
 Rivers & Streams
 Lakes
 Wetlands
 Ontario Mining Claims



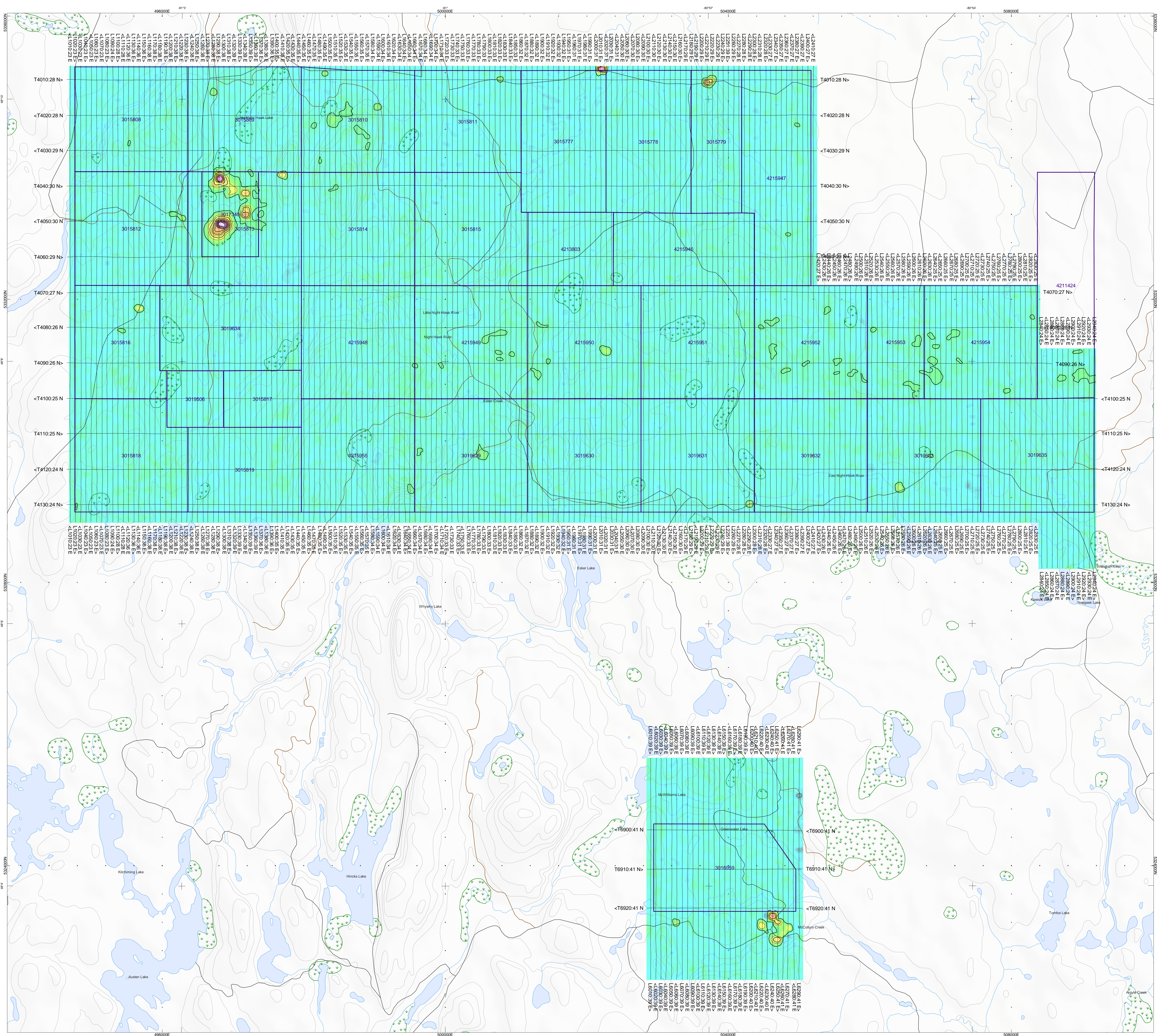
The topographic data base was derived from 1:50,000 NRC (Natural Resources Canada) NTDB data. Background shading is derived from NASA SRTM (Shuttle Radar Topography Mission) data. Inset data derived from Geocommunities 1:250,000 Canadian National Topographic database (www.geocomm.ca | www.geocomm.com).

KLONDIKE SILVER CORP.
 Nickel South Extension Blocks 1 & 2
 Timmins, Ontario, Canada

Geotech VTEM System
 B-Field Channel 23
 Time Gate 1.151 ms.

Flown and processed by Geotech Ltd.
 245 Industrial Parkway North,
 Aurora, Ontario, Canada L4G 4C4
 www.geotech.ca

MARCH 2008

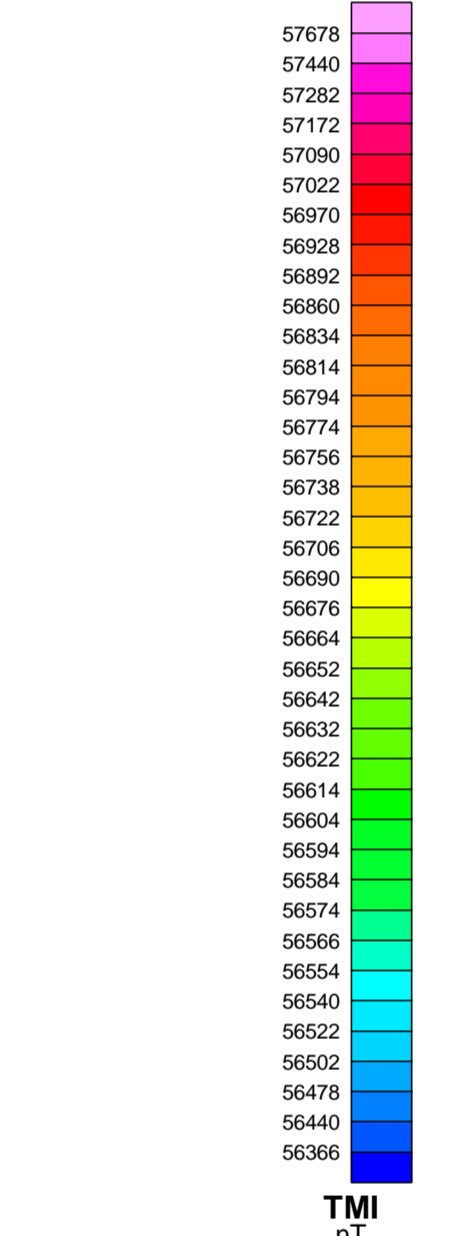
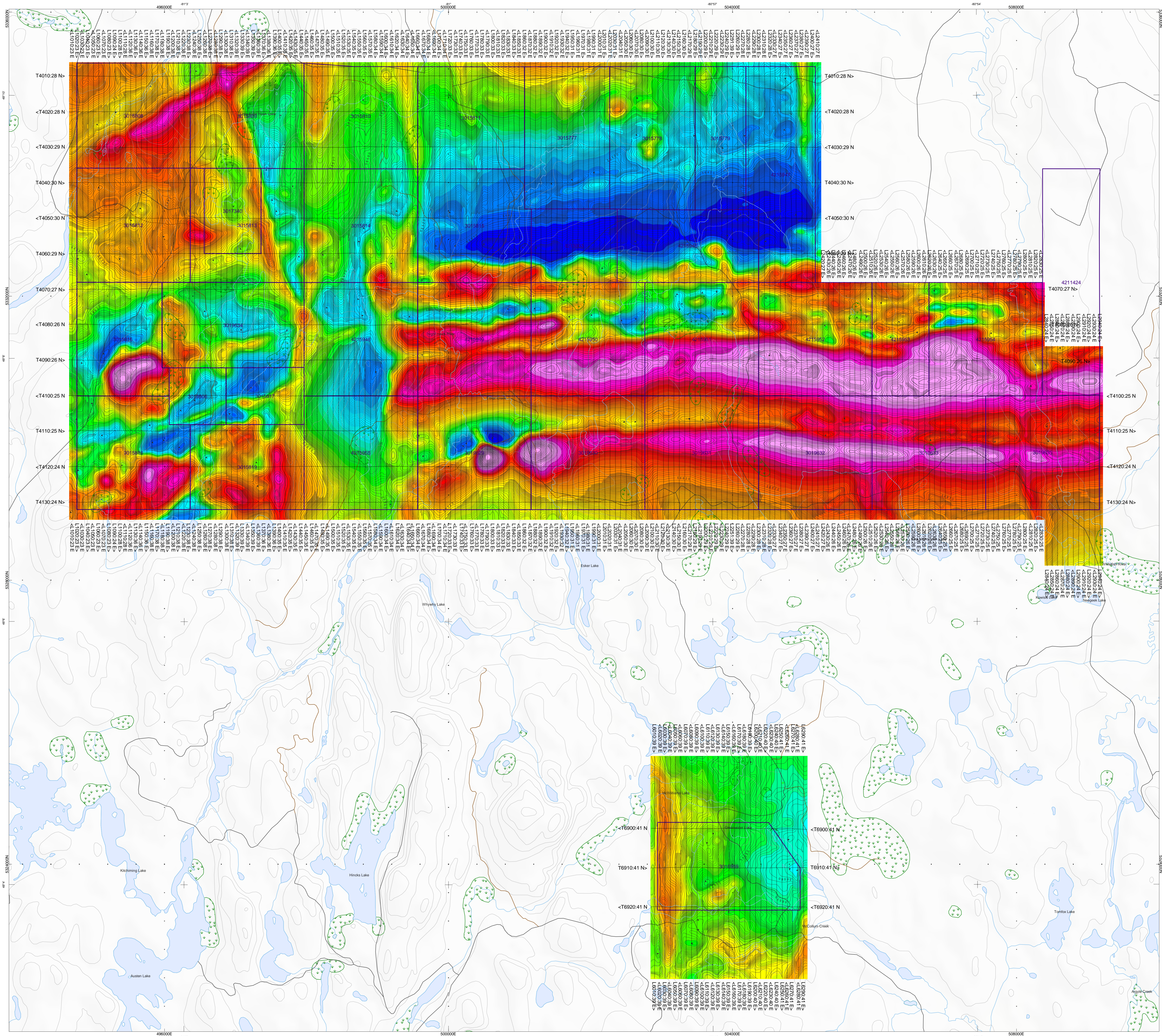




SURVEY SPECIFICATIONS:
 Survey Date: January 16 to 23, 2008
 Survey Base: Timmins, Ontario
 Aircraft: Aerospacelab A-Star 3000 (C-FBTV)
 Nominal Survey Line Spacing: 75 Meters
 Nominal Survey Line Direction: N 0° E
 Nominal Tie Line Spacing: 500 (NS1) & 550 (NS2) Meters
 Nominal Tie Line Direction: N 40° E
 Nominal Terrain Clearance: 77 Meters
 EM Loop: Towed 42 meters beneath the Helicopter
 Magnetic Sensor: Towed 15 meters beneath the Helicopter

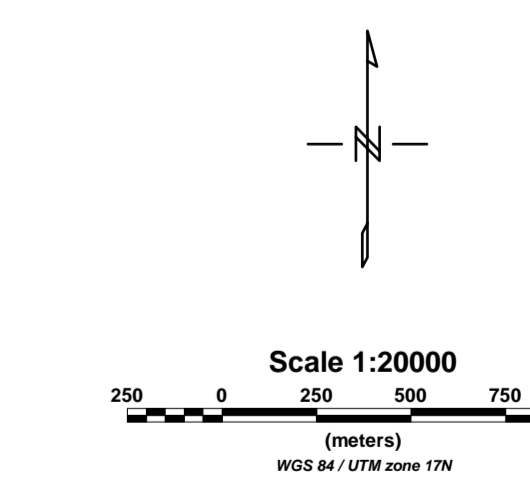
INSTRUMENTS
 Geotech Time Domain Electromagnetic System (VTEM)
 Concentric R/LX Geometry
 Transmitter Loop: Diameter 26 Meters, Base Frequency 30 Hz
 Dipole Moment: 466,900 N/A
 Transmitter Wave Form: Trapezoid, Pulse Width 7.3 ms.
 Geometrics High Sensitivity Cosum Magnetometer
 Mag Resolution: 0.02 nT at 10 samples/sec

MAP PROJECTION
 Datum: NAD 84
 Projection: Universal Transverse Mercator
 Central Meridian: 81°W (Zone 17)
 Central Scale Factor: 0.9996
 False Easting/Northing: 500,000m/0m
 Major Axis: 6378137.000
 Eccentricity: 0.081819191
 NTS: 042402, 042403



Contour Interval:
 2 nT
 10 nT
 50 nT

TOPOGRAPHIC LEGEND:
 Contours
 Roads
 Trails
 Rivers & Streams
 Lakes
 Wetlands
 Ontario Mining Claims



The topographic data base was derived from 1:50000 NRC (Natural Resources Canada) NTDB data.
 Background shading is derived from NASA SRTM (Shuttle Radar Topography Mission) data.
 (Real data derived from Geocommunities 1:250,000 Canadian National Topographic Database.
 (www.geogratis.ca) (www.geocomm.com)

KLONDIKE SILVER CORP.
 Nickel South Extension Blocks 1 & 2
 Timmins, Ontario, Canada

Geotech VTEM System
TOTAL MAGNETIC INTENSITY

Flown and processed by Geotech Ltd.
 245 Industrial Parkway North,
 Aurora, Ontario, Canada L4G 4C4
 www.geotech.ca

MARCH 2008