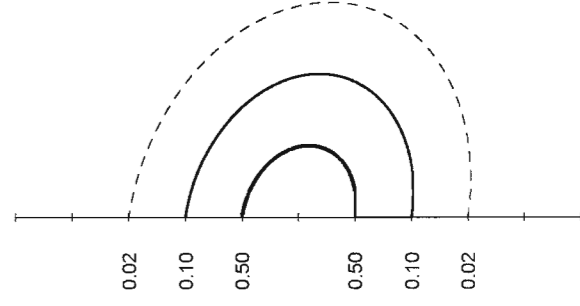
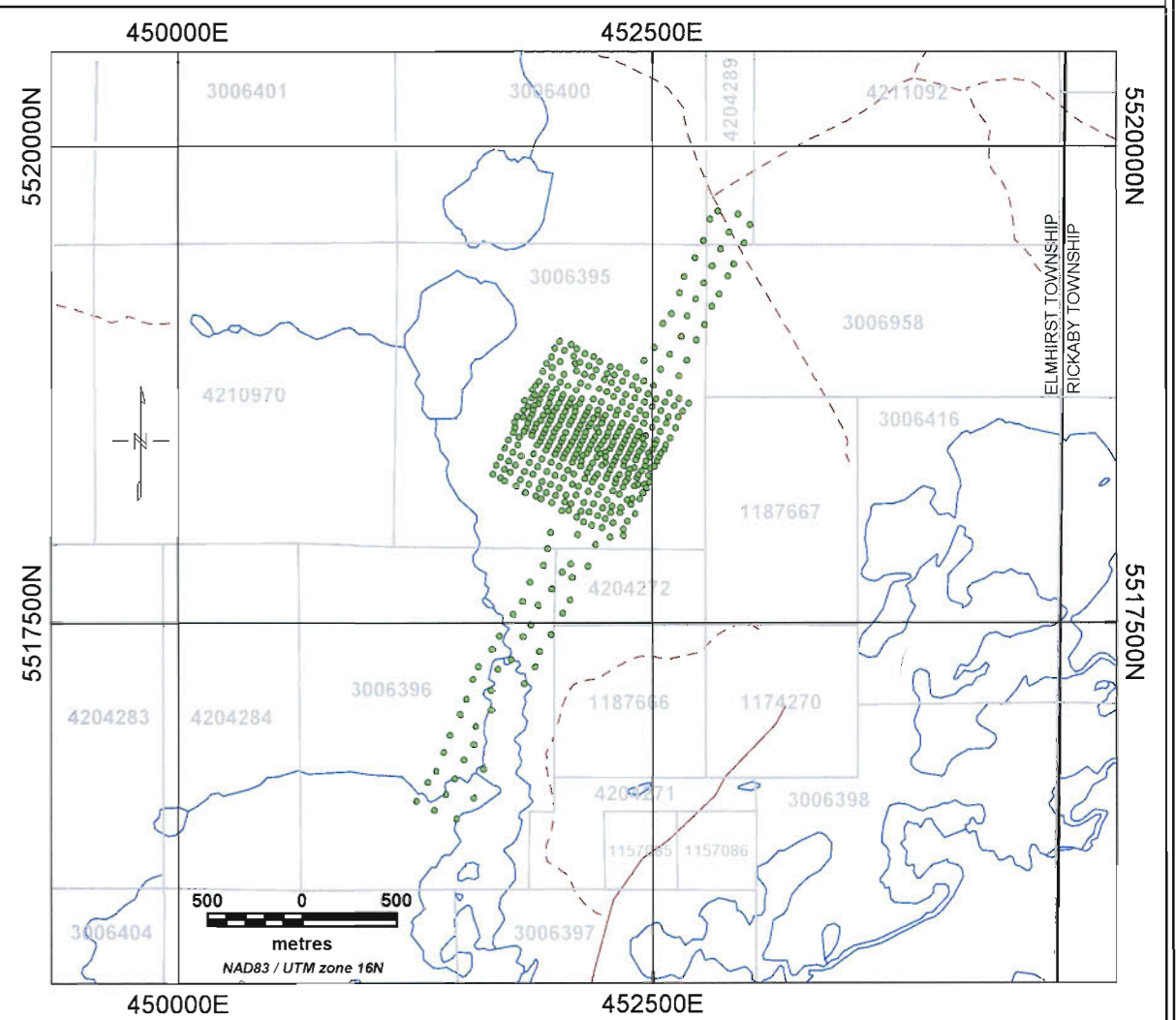
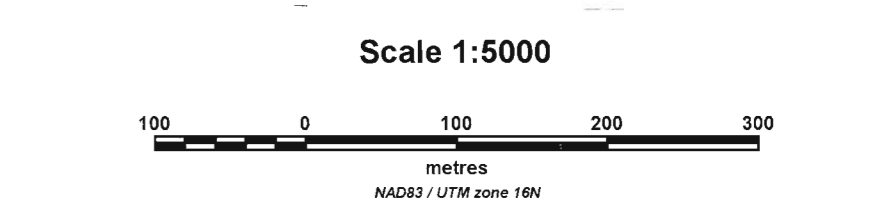


Regional Anomaly Contours



Unit: mGal
 Instruments: Scintrex CG-5 AutoGrav gravity meter
 Leica System ATX 1200 GPS

BASE # GRAVITY BASE STATION
 STATION # GRAVITY STATION

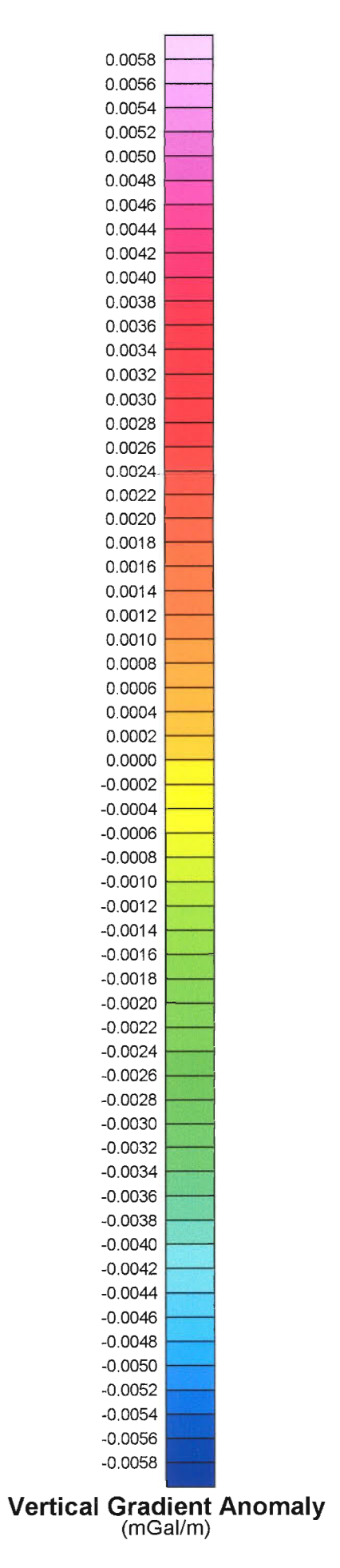
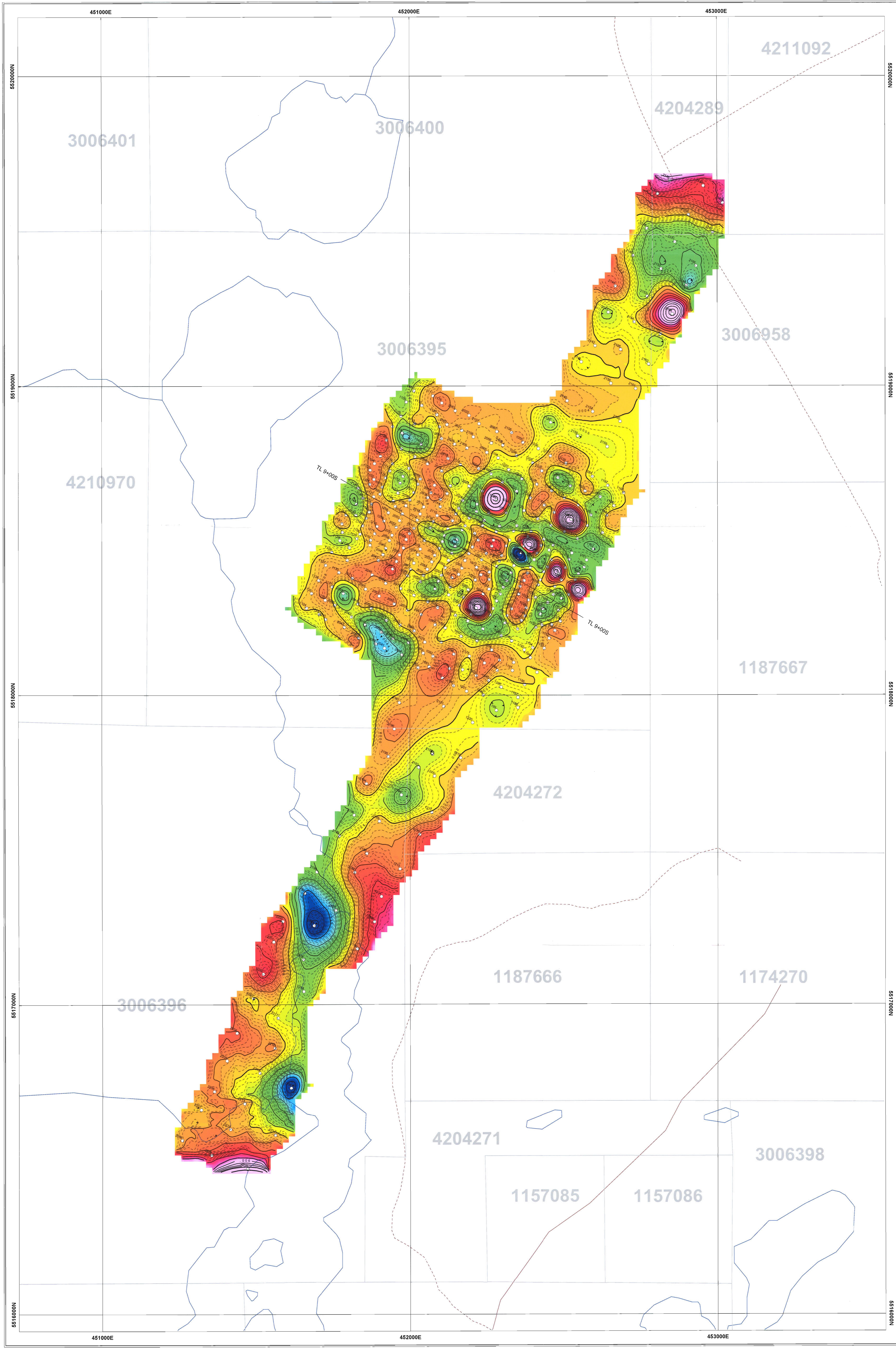


Kodiak Exploration Ltd.
Hercules - Central Golden Mile
Elmhirst Township, Ontario, Canada

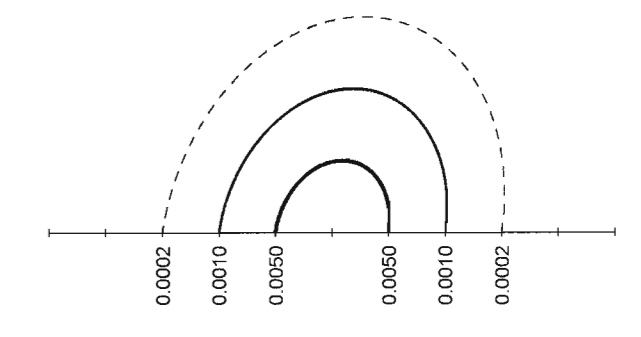
Ground Gravity Survey
Regional Anomaly Contours
(mGal)

Interpreted by: Z. Hamzaoui, BSc	2008/06	
Surveyed by: Z. Hamzaoui, BSc	2008/05	
Approved by: S. Boucher, Eng.	2008/06	
Reference map: 42E/13	Scale 1:5000	

Project no: 08N052 Map no: 2.4

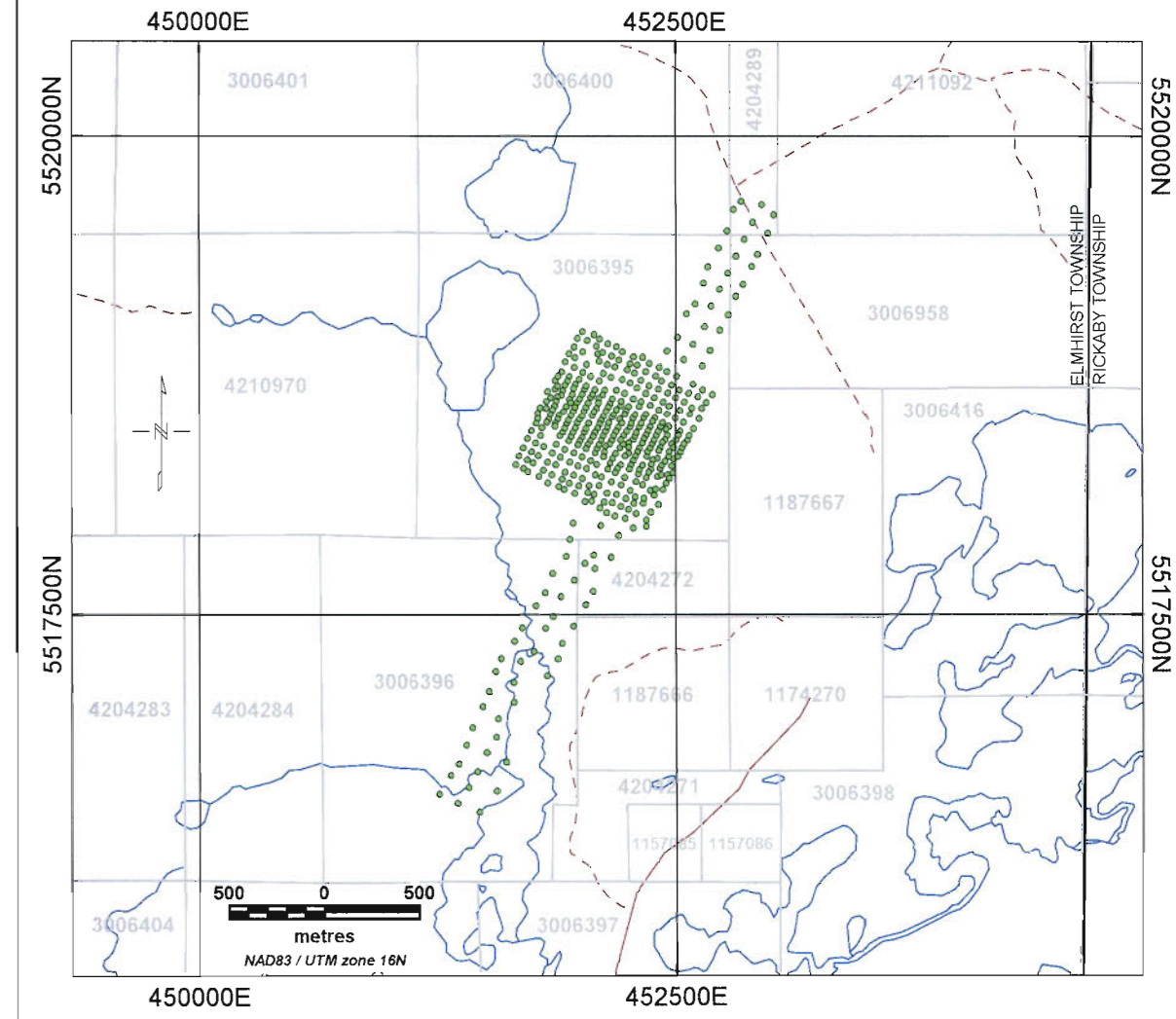
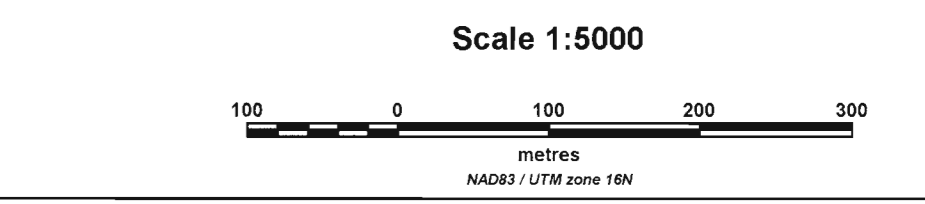


Vertical Gradient Anomaly Contours



Unit: mGal/m
 Instruments: Scintrex CG-5 AutoGrav gravity meter
 Leica System ATX 1200 GPS

BASE # GRAVITY BASE STATION
 STATION # GRAVITY STATION

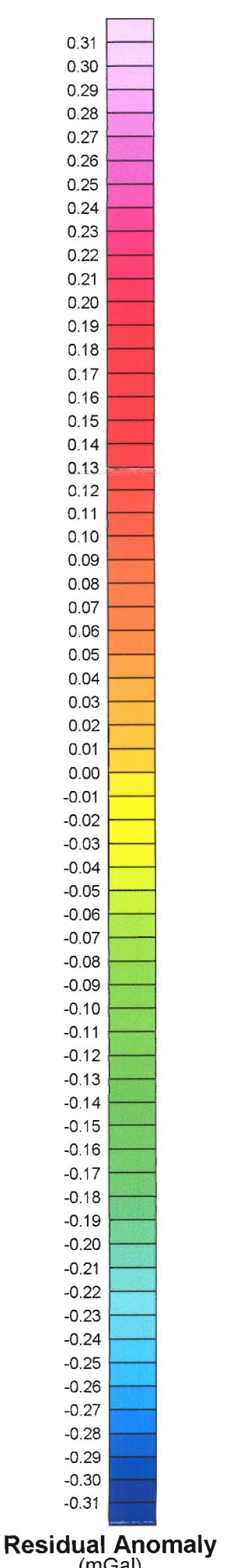
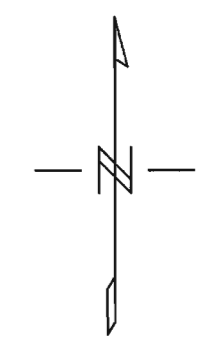
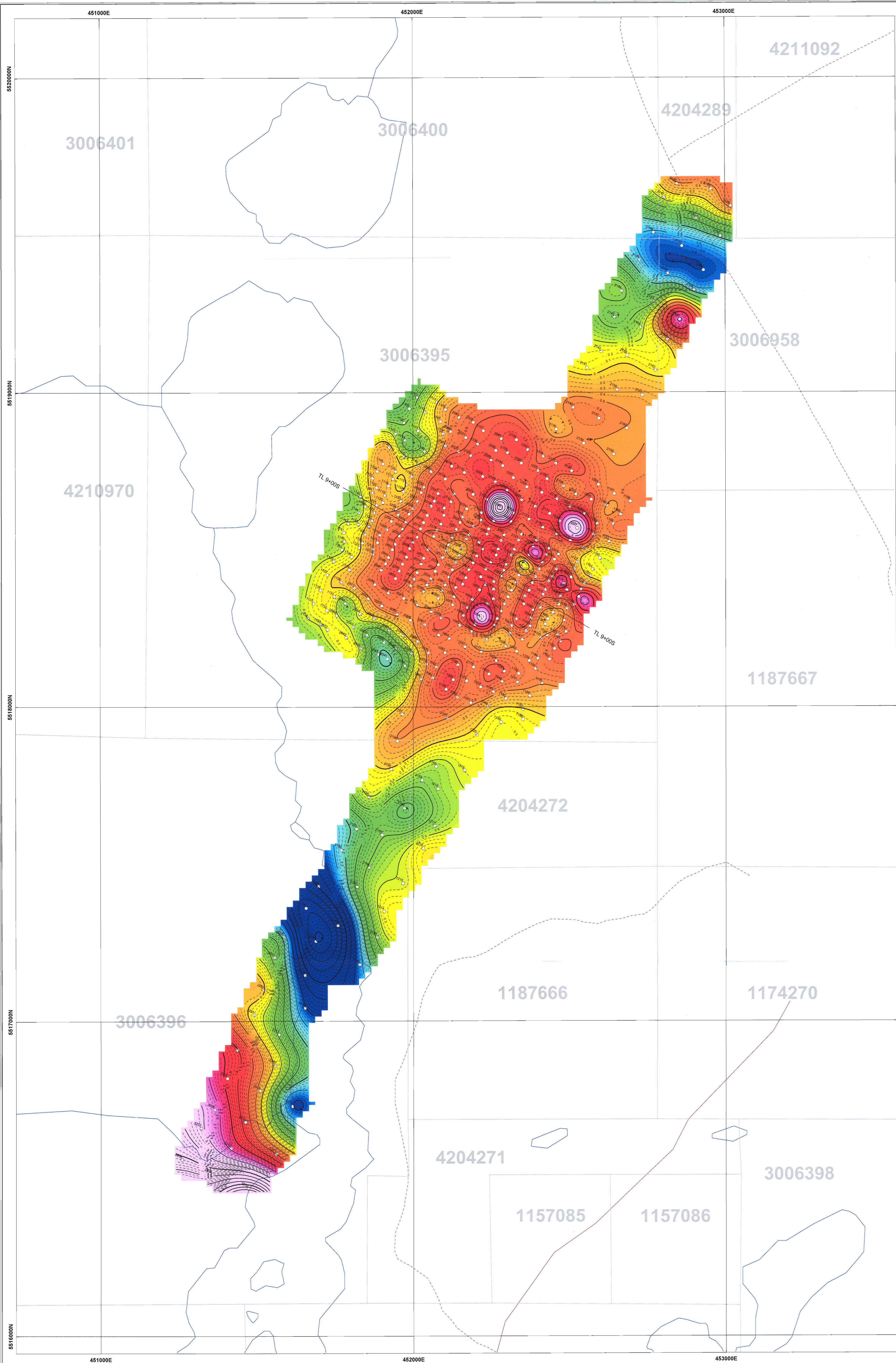


Kodiak Exploration Ltd.
 Hercules - Central Golden Mile
 Elmhirst Township, Ontario, Canada

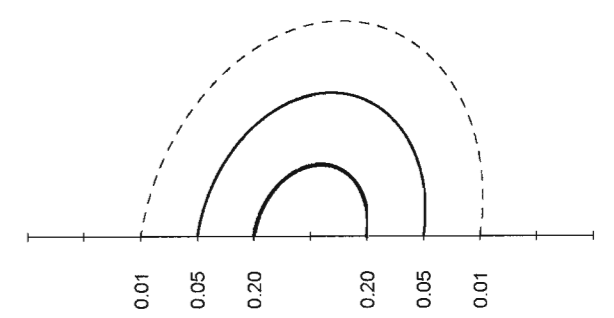
**Ground Gravity Survey
 Vertical Gradient Anomaly Contours
 (Convolution Filter Method)**

Interpreted by: Z. Hamzaoui, BSc 2008/06
 Surveyed by: Z. Hamzaoui, BSc 2008/05
 Approved by: S. Boucher, Eng. 2008/06
 Reference map: 42E/13 Scale 1:5000
 Project no: 08N052 Map no: 2.7





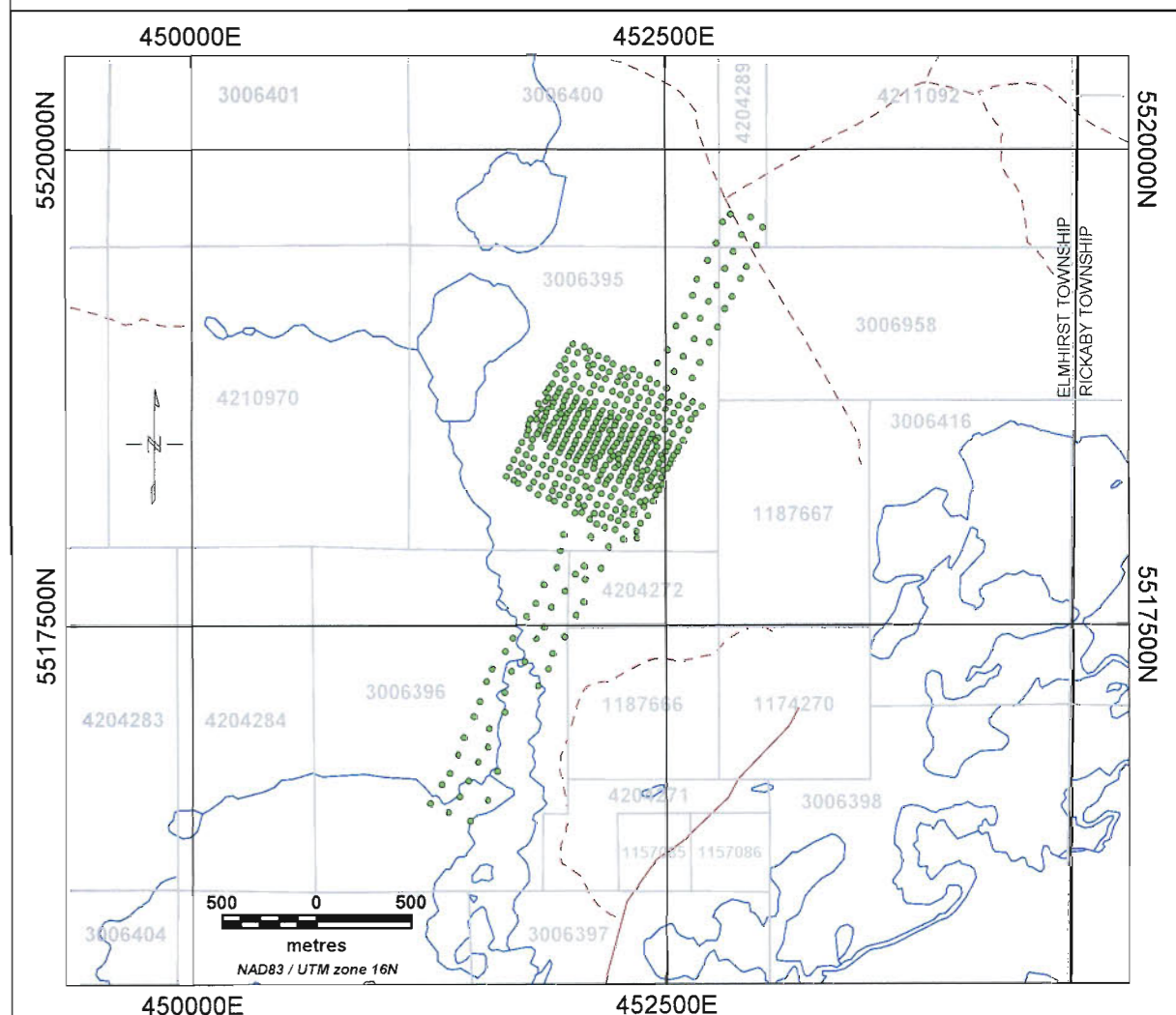
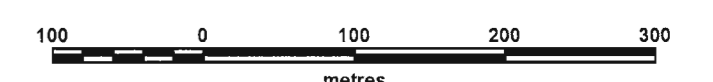
Residual Anomaly Contours



Unit: mGal
 Instruments: Scintrex CG-5 AutoGrav gravity meter
 Leica System ATX 1200 GPS

BASE # GRAVITY BASE STATION
 STATION # GRAVITY STATION

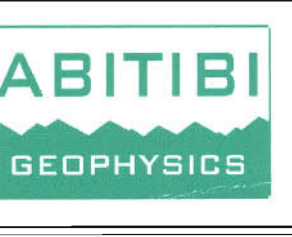
Scale 1:5000

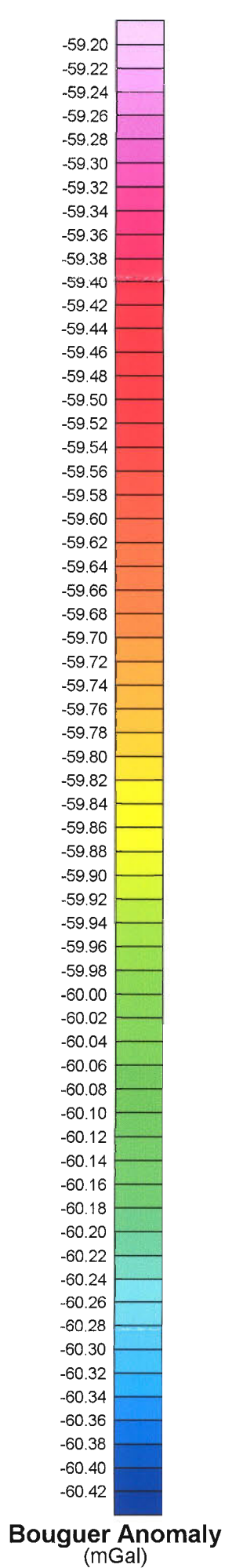
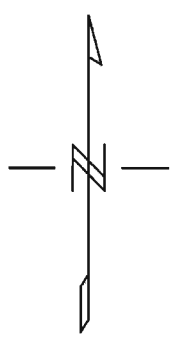
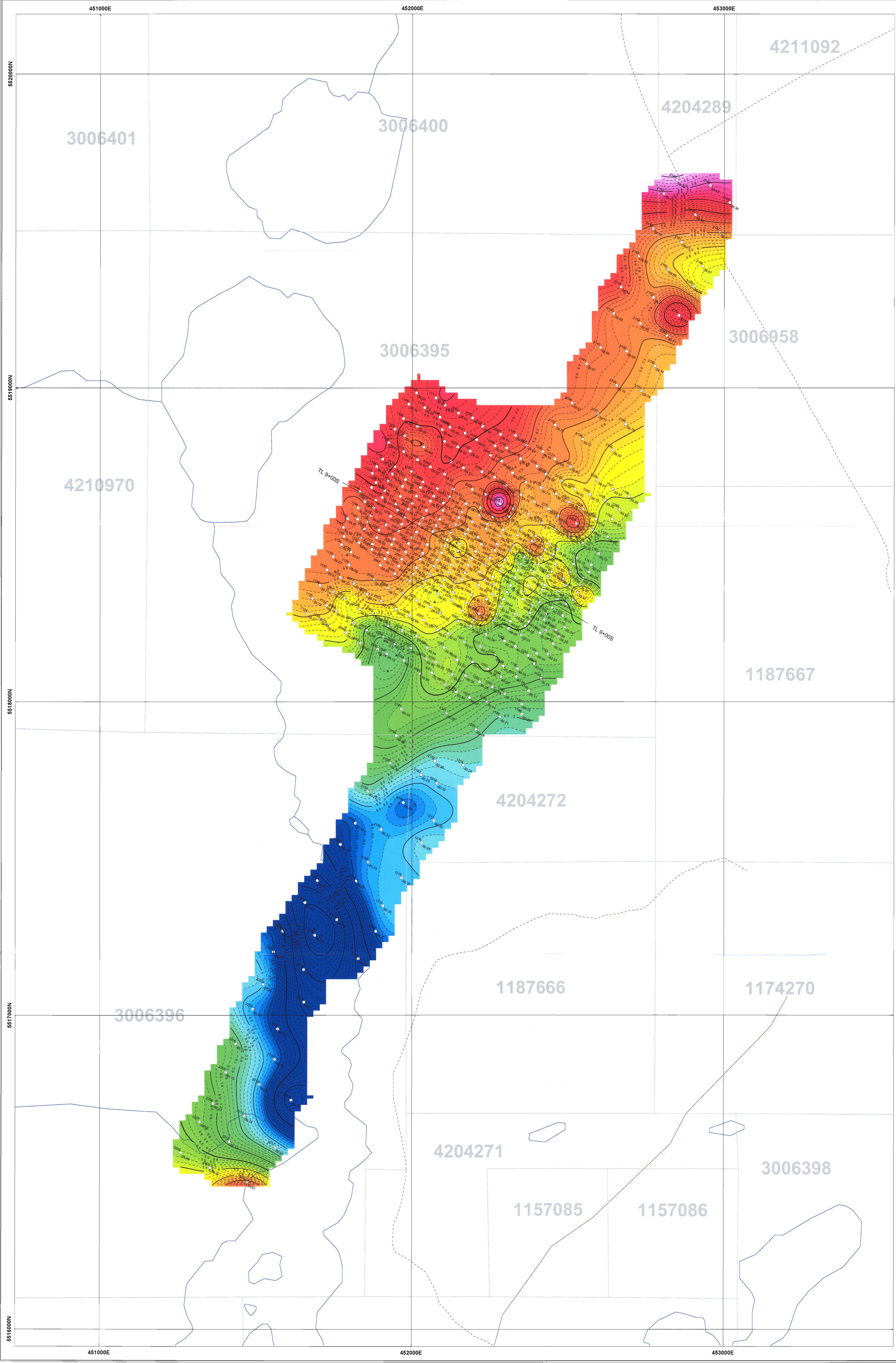


Kodiak Exploration Ltd.
Hercules - Central Golden Mile
Elmhirst Township, Ontario, Canada

Ground Gravity Survey
Residual Anomaly Contours
(mGal)

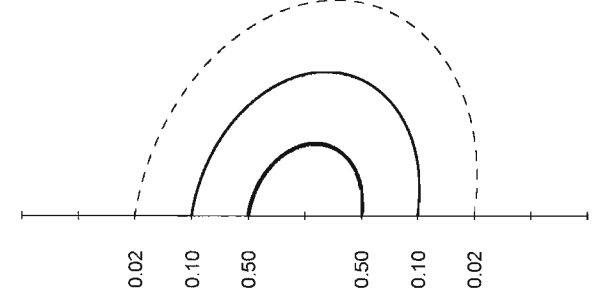
Interpreted by: Z. Hamzaoui, BSc 2008/06
 Surveyed by: Z. Hamzaoui, BSc 2008/05
 Approved by: S. Boucher, Eng. 2008/06
 Reference map: 42E/13 Scale 1:5000
 Project no: 08N052 Map no: 2.5





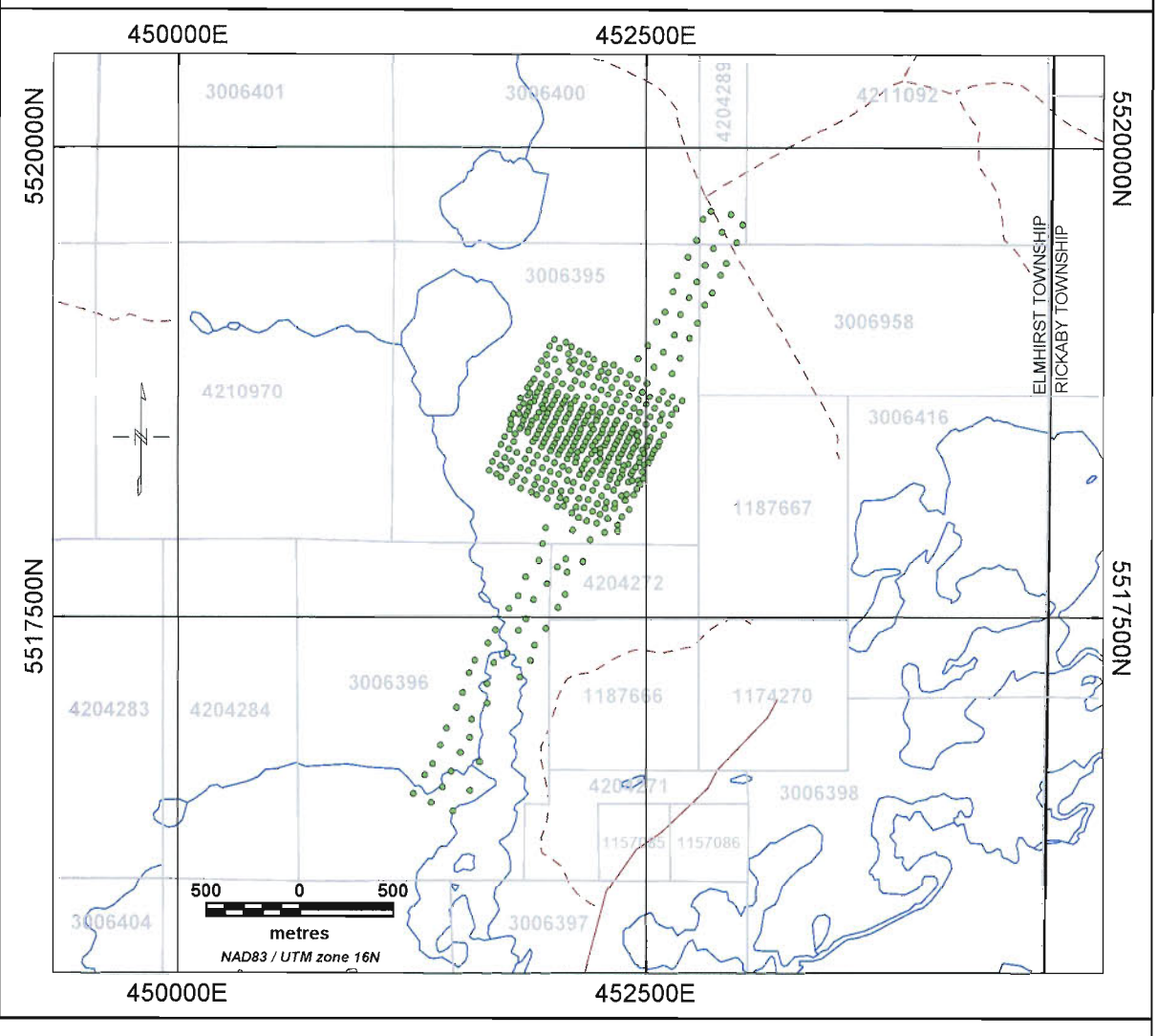
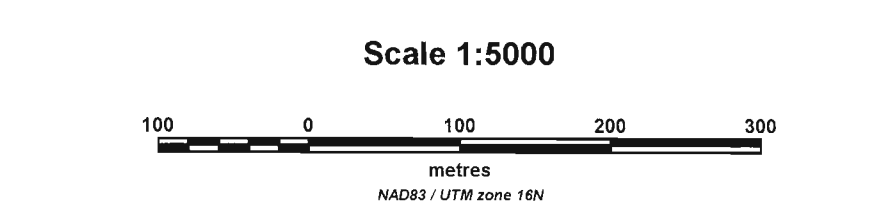
Bouguer Anomaly (mGal)

Bouguer Anomaly Contours



Unit: mGal
 Instruments: Scintrex CG-5 AutoGrav gravity meter
 Leica System ATX 1200 GPS

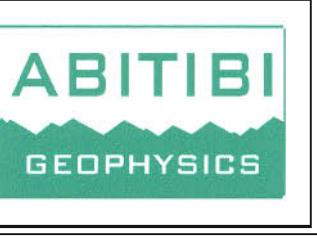
BASE # GRAVITY BASE STATION
 STATION # GRAVITY STATION
 VALLE

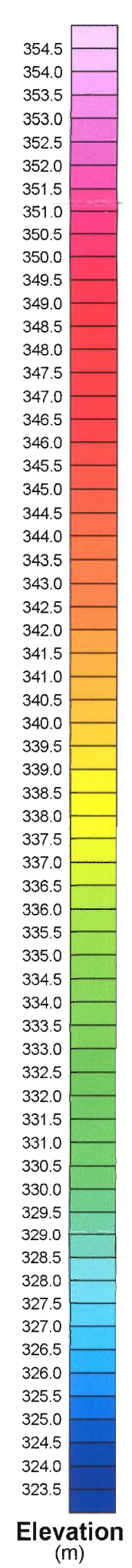
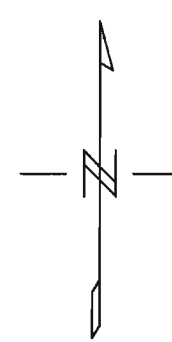
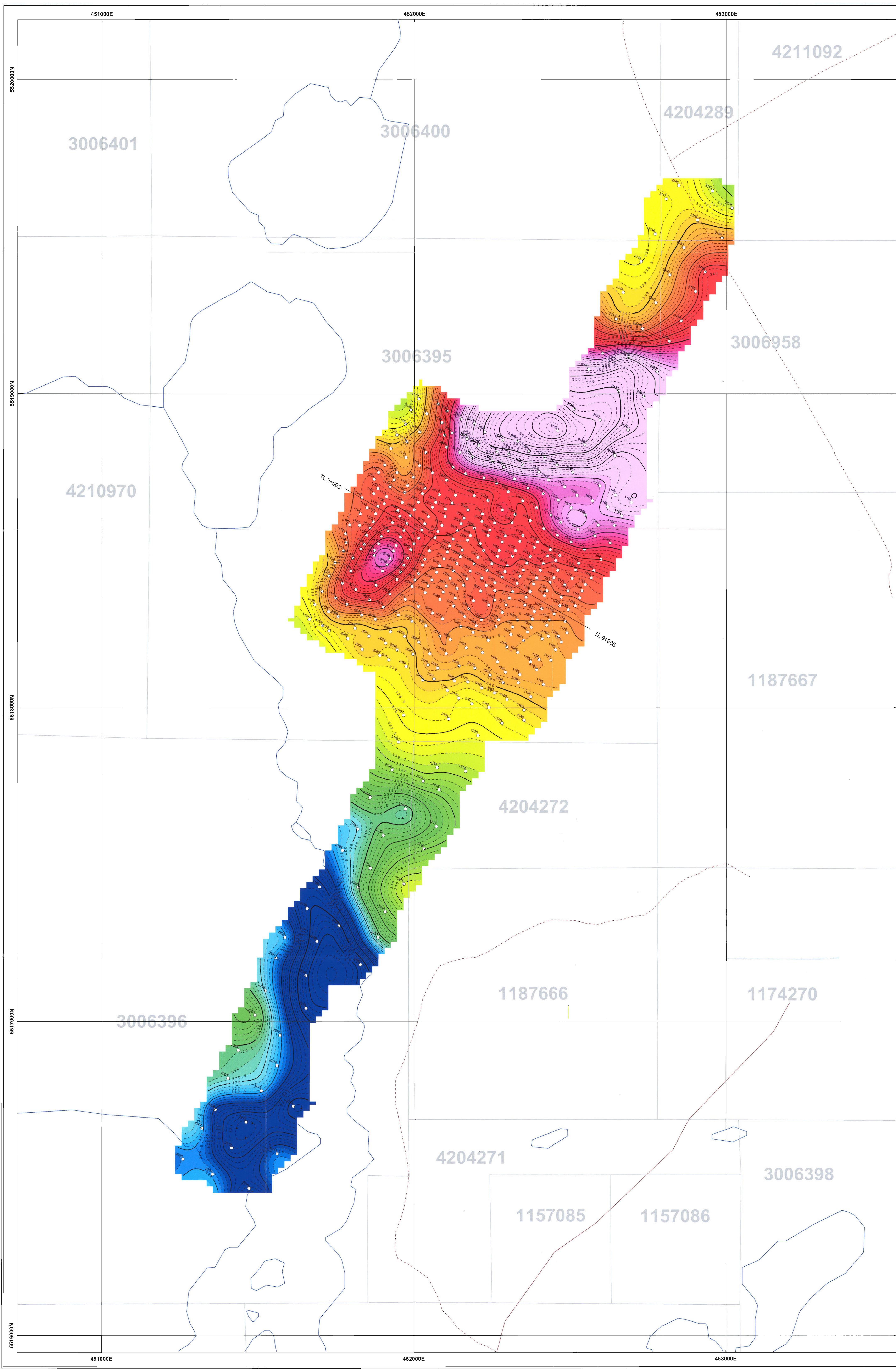


Kodiak Exploration Ltd.
Hercules - Central Golden Mile
Elmhirst Township, Ontario, Canada

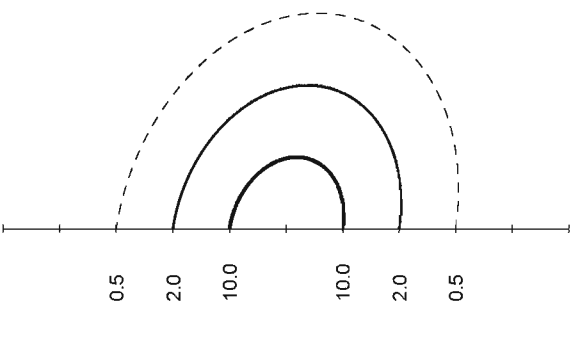
Ground Gravity Survey
Bouguer Anomaly Contours Corrected
(mGal)

Interpreted by: Z. Hamzaoui, BSc 2008/06
 Surveyed by: Z. Hamzaoui, BSc 2008/05
 Approved by: S. Boucher, Eng. 2008/06
 Reference map: 42E/13 Scale 1:5000
 Project no: 08N052 Map no: 2.2a



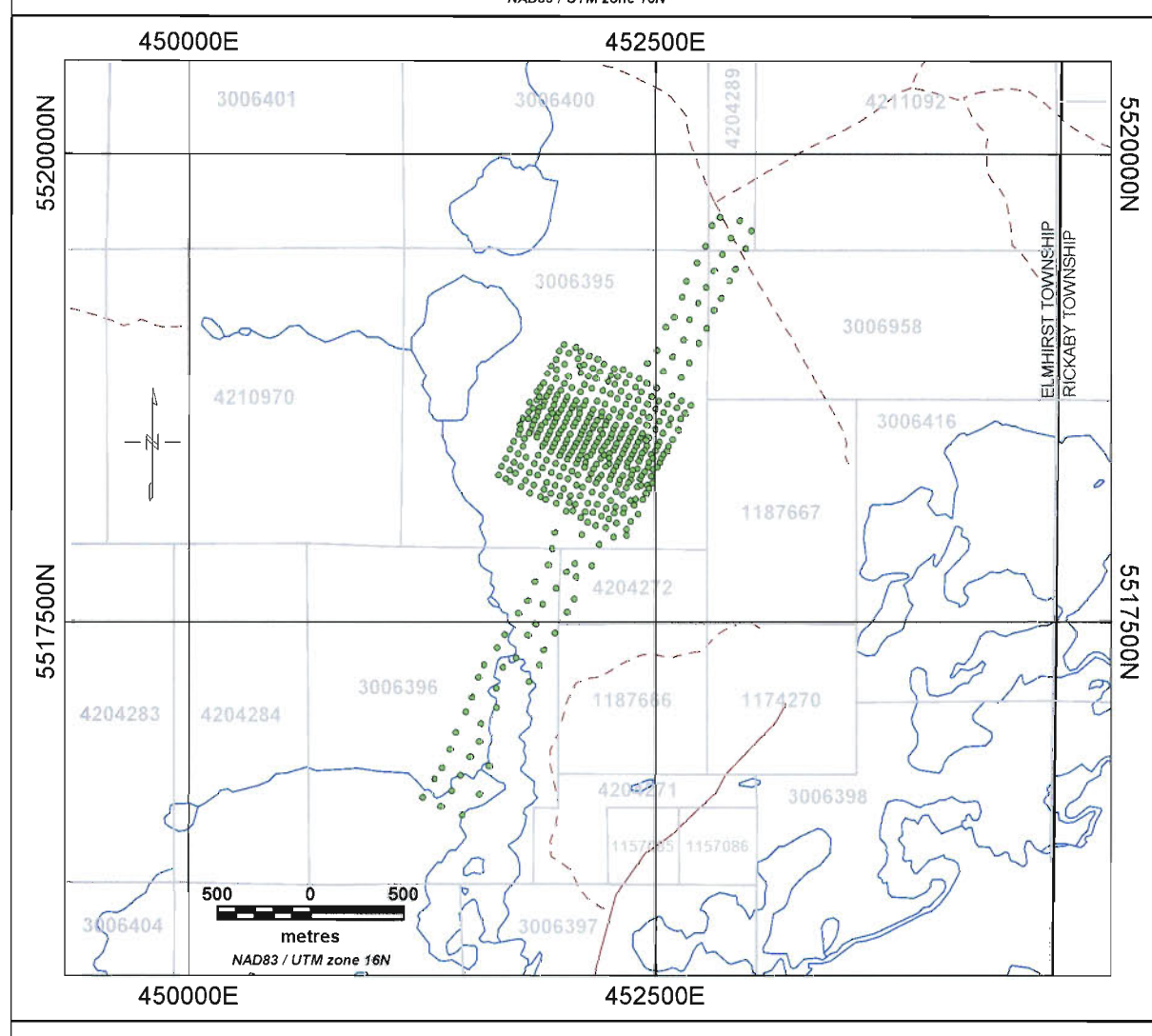
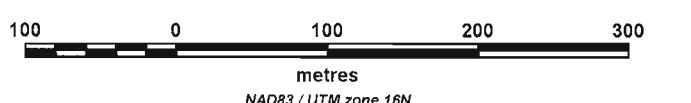


Elevation Contours



Unit: m
 Instruments: Scintrex CG-5 AutoGrav gravity meter
 Leica System ATX 1200 GPS
 BASE # GRAVITY BASE STATION
 STATION # GRAVITY STATION
 VALUE

Scale 1:5000



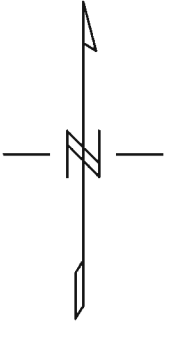
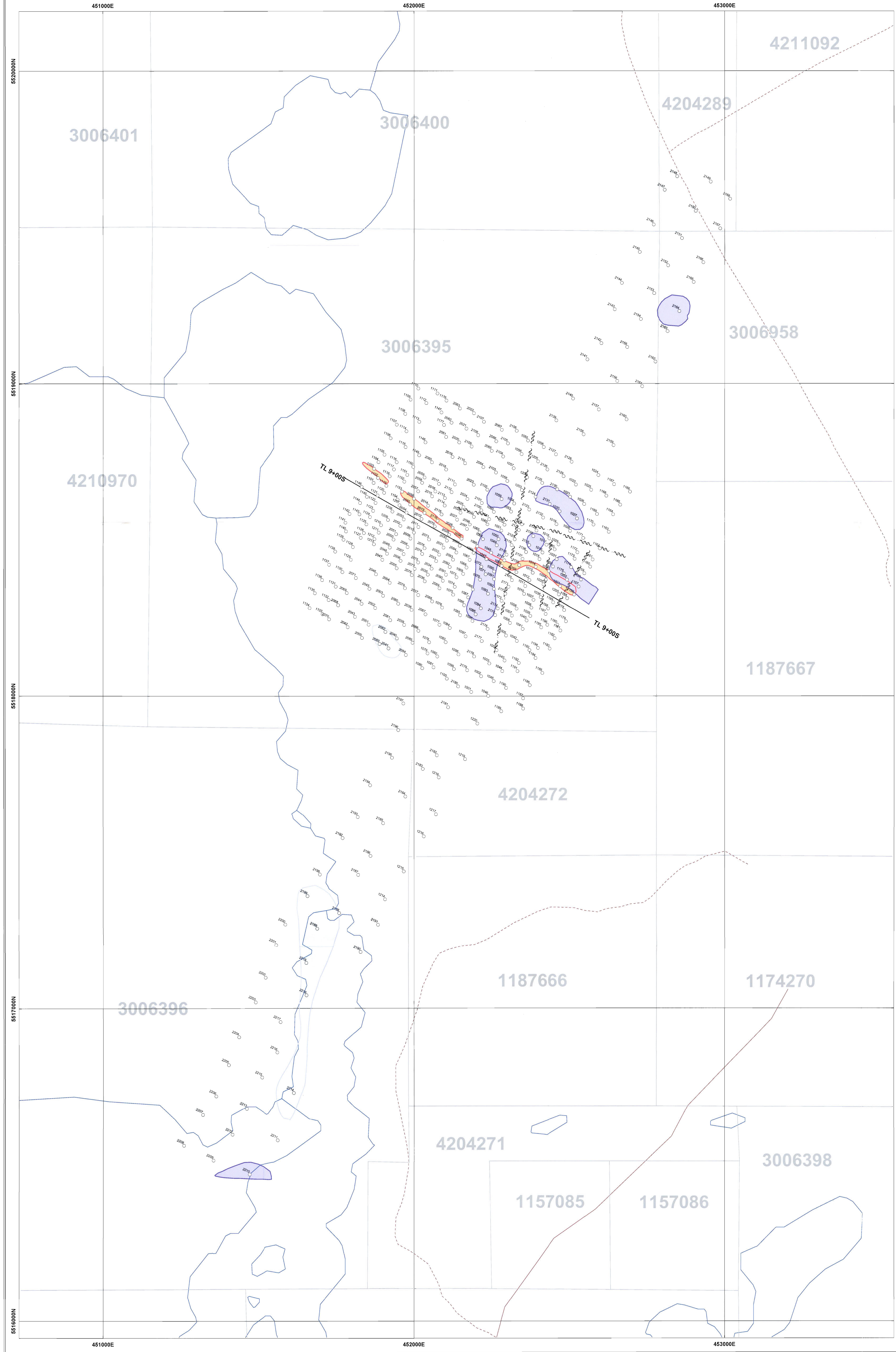
Kodiak Exploration Ltd.
Hercules - Central Golden Mile
Elmhirst Township, Ontario, Canada

Ground Gravity Survey
Elevation Contours
(m)

Interpreted by: Z. Hamzaoui, BSc 2008/06
 Surveyed by: Z. Hamzaoui, BSc 2008/05
 Approved by: S. Boucher, Eng. 2008/06
 Reference map: 42E/13
 Project no: 08N052

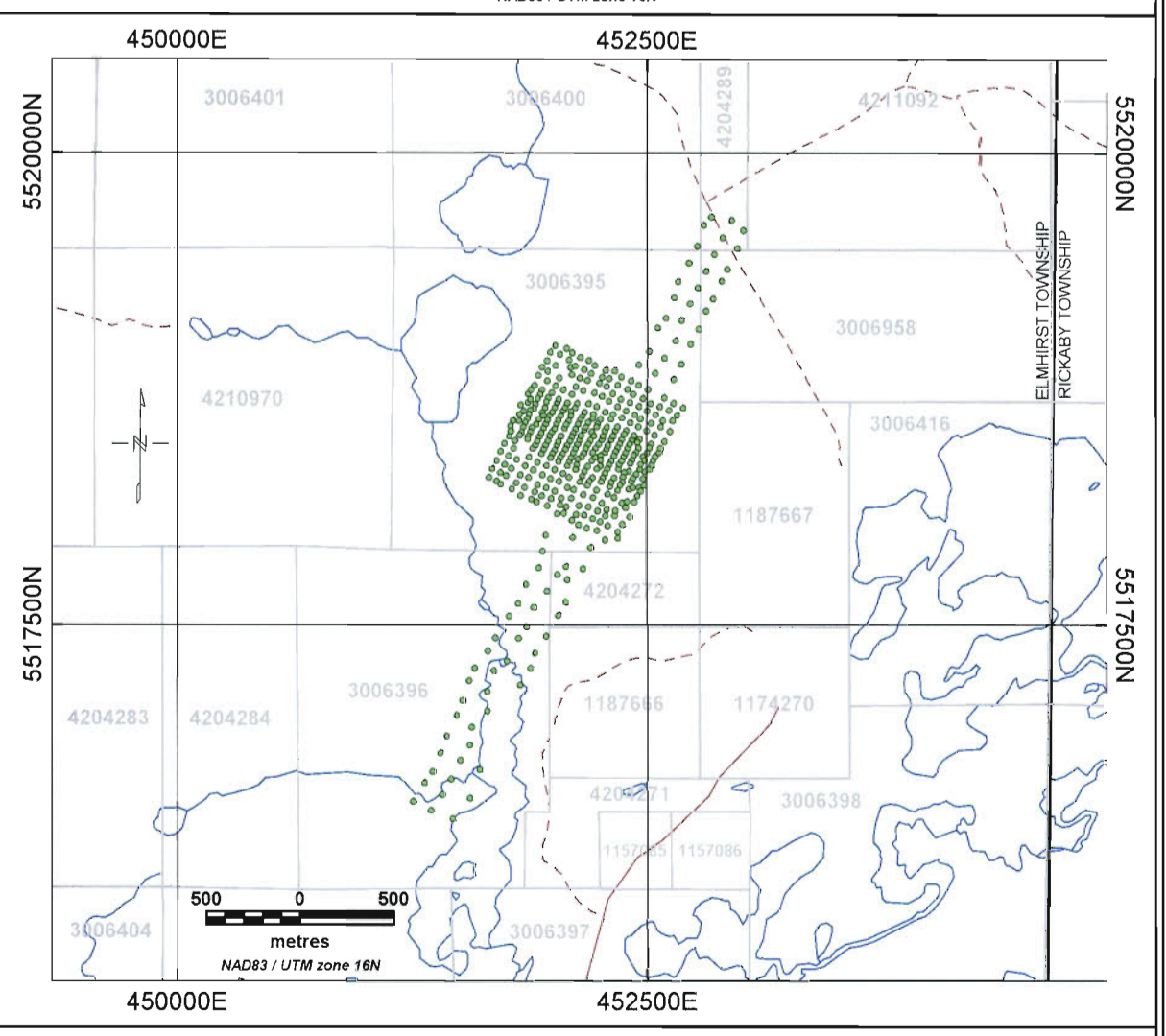
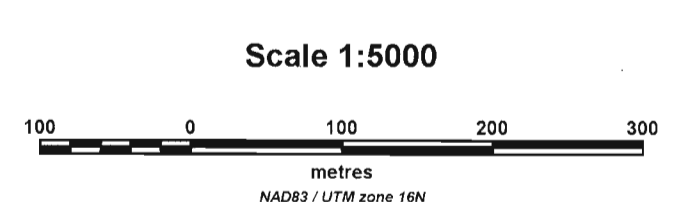
Scale 1:5000
 Map no: 2.3





LEGEND

- GRAVITY SURVEY**
- Gravity High Trend
 - - - - - Questionable Continuity
 - - - - - Definite Continuity
 - Gravity Low Trend
 - - - - - Questionable Continuity
 - - - - - Definite Continuity
 - Gravity Body Outline
 - Positive Anomaly
 - Negative Anomaly
 - GD-01 Gravity Domain Boundary
 - GD-02 Gravity Domain Boundary
 - Approximate location of Quartz Veins Style Mineralization
 - Miscellaneous Symbols
 - Observed Fault / Shear
 - Geophysically Inferred Fault / Shear



Kodiak Exploration Ltd.
Hercules - Central Golden Mile
Elmhirst Township, Ontario, Canada

Geophysical Interpretation

Interpreted by: Z. Hamzaoui, BSc 2008/06
 Surveyed by: Z. Hamzaoui, BSc 2008/05
 Approved by: S. Boucher, Eng. 2008/06
 Reference map: 42E/13 Scale 1:5000
 Project no: 08N052 Map no: 10.0

