

LEGEND

- LATE FELSIC INTRUSIVE
- FELSIC INTRUSIVE ROCKS (COHERENT)
- GABBRO
- CLASTIC SEDIMENTARY ROCKS
- FELSIC VOLCANIC ROCKS (ELASTIC)
- MAFC VOLCANIC ROCKS

SYMBOLS

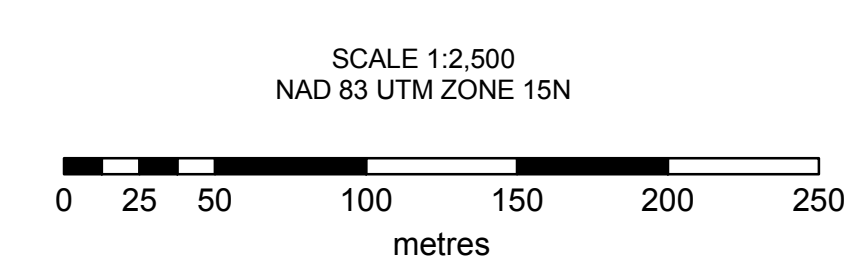
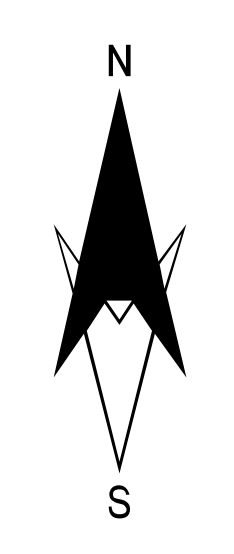
- BEDDING
- FAULT
- FOLIATION
- JOINT
- LINEATION
- FOLIOS
- SHEAR
- VEIN
- FAULT (INTERPRETED)
- INFERRED CONTACT
- OUTCROP
- TRENCH OUTLINE
- COLLAR LOCATION 2007
- COLLAR LOCATION 2008
- GRID
- SAMPLE LOCATION

GEOCHEMISTRY 2007

- <0.050 ppm Au
- 0.05 - 0.10 ppm Au
- 0.10 - 0.50 ppm Au
- 0.50 - 1.00 ppm Au
- 1.00 - 5.00 ppm Au
- 5.00 - 10.00 ppm Au
- >10.00 ppm Au

GEOCHEMISTRY 2008

- <0.050 ppm Au
- 0.05 - 0.10 ppm Au
- 0.10 - 0.50 ppm Au
- 0.50 - 1.00 ppm Au
- 1.00 - 5.00 ppm Au
- 5.00 - 10.00 ppm Au
- >10.00 ppm Au



Teck Cominco Limited
 855 Field Street
 Thunder Bay Ontario
 CANADA P7B 6B6

Teck

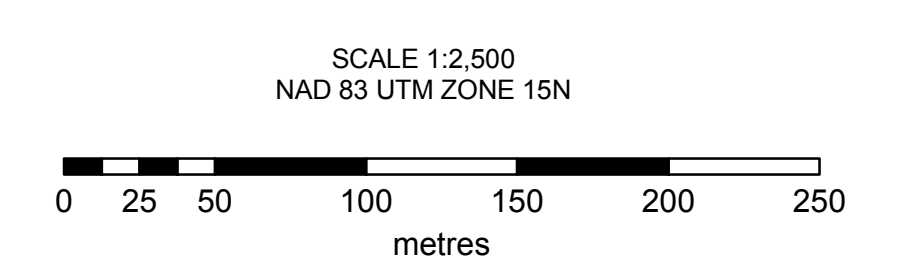
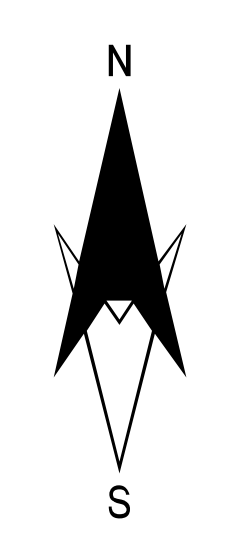
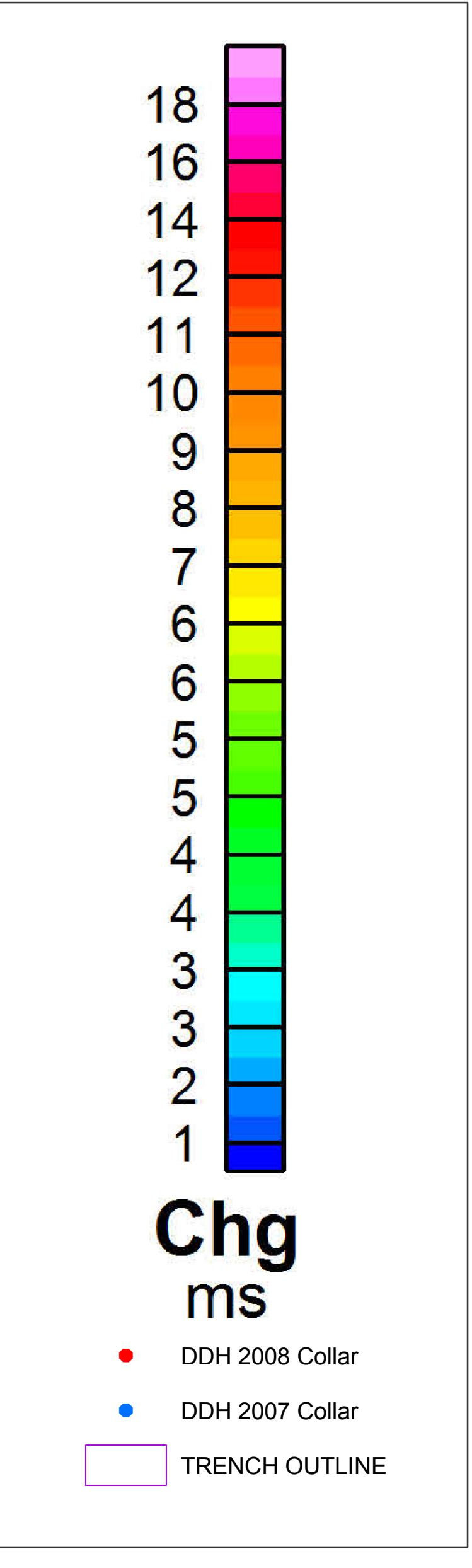
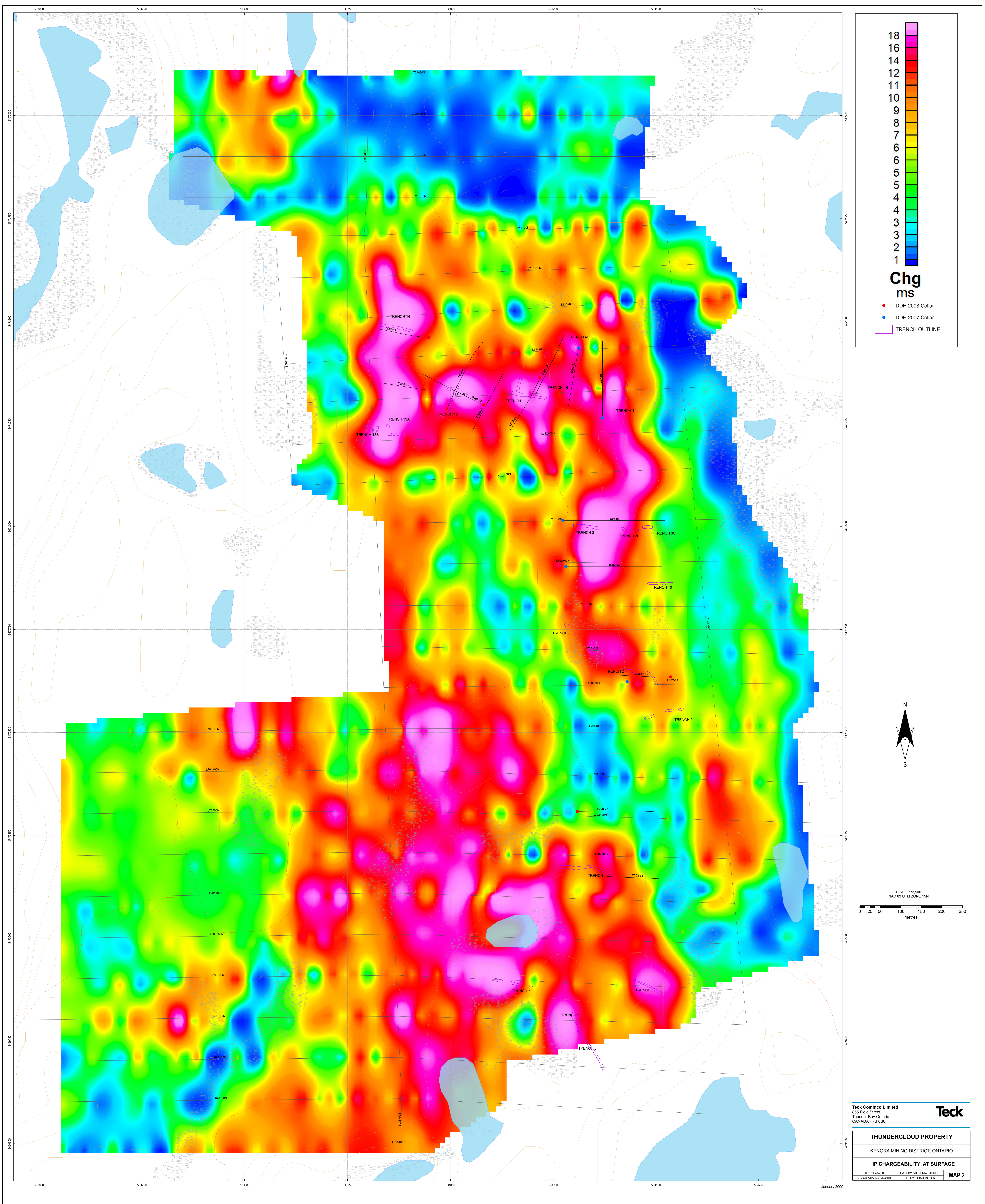
THUNDERCLOUD PROPERTY

KENORA MINING DISTRICT, ONTARIO

2008 MAPPING, DRILLING, TRENCHING, & GEOCHEMISTRY

NTS: S2775218 DATA BY: ANDREW SHANNON
 FILE: TC_2008_MAP_2008_04.GDB GDB BY: LISA J. MILLER

MAP 1



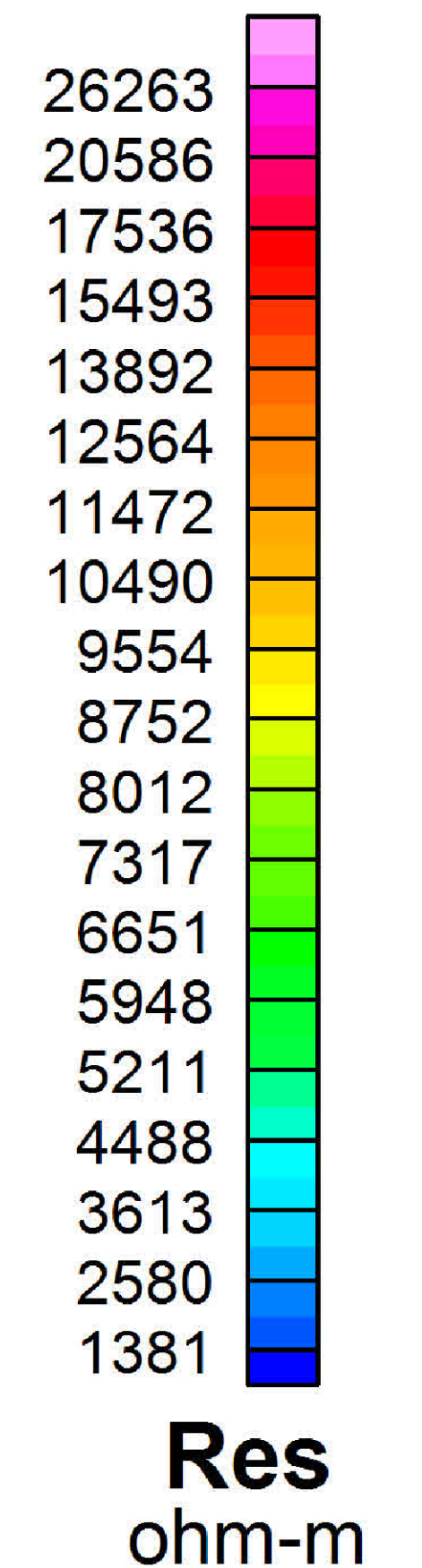
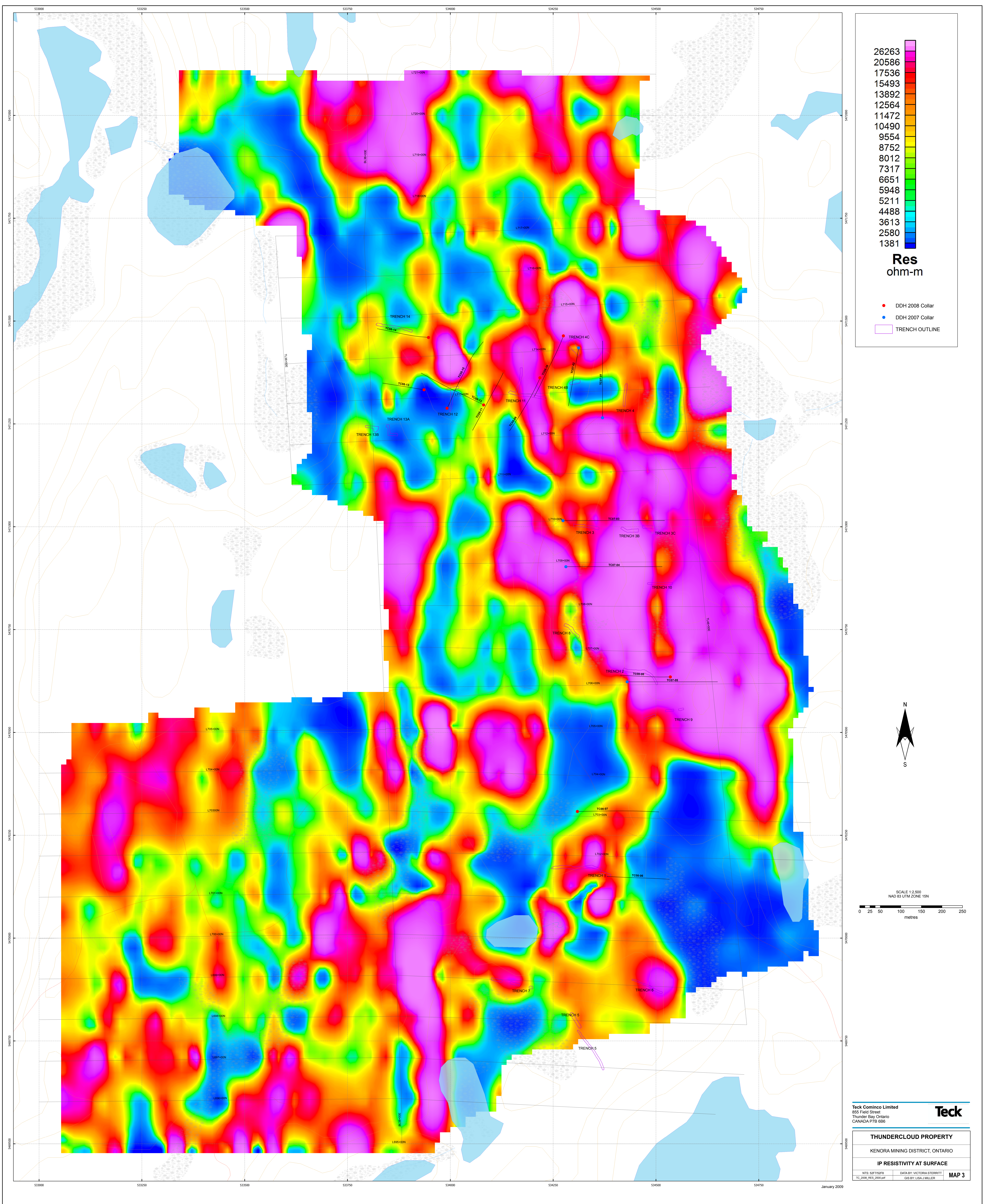
Teck Cominco Limited
 855 Field Street
 Thunder Bay Ontario
 CANADA P7B 6B6

Teck

THUNDERCLOUD PROPERTY
 KENORA MINING DISTRICT, ONTARIO
IP CHARGEABILITY AT SURFACE
 NTS: S077528 DATA BY: VICTORIA STERRITT
 TS: 2008, CHARGE: 2009-01 GIS BY: LISA MILLER

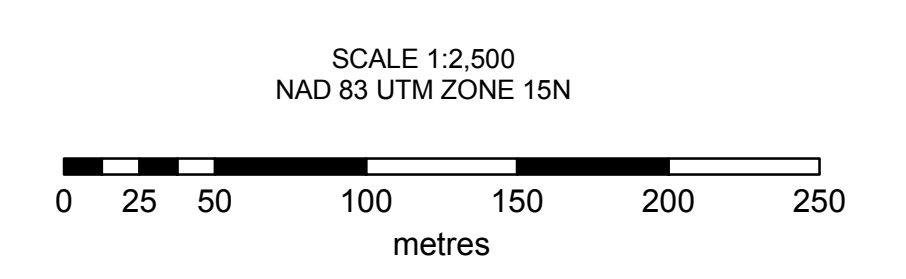
MAP 2

January 2009



Res
ohm-m

- DDH 2008 Collar
- DDH 2007 Collar
- TRENCH OUTLINE



Teck Cominco Limited
855 Field Street
Thunder Bay Ontario
CANADA P7B 6B6

Teck

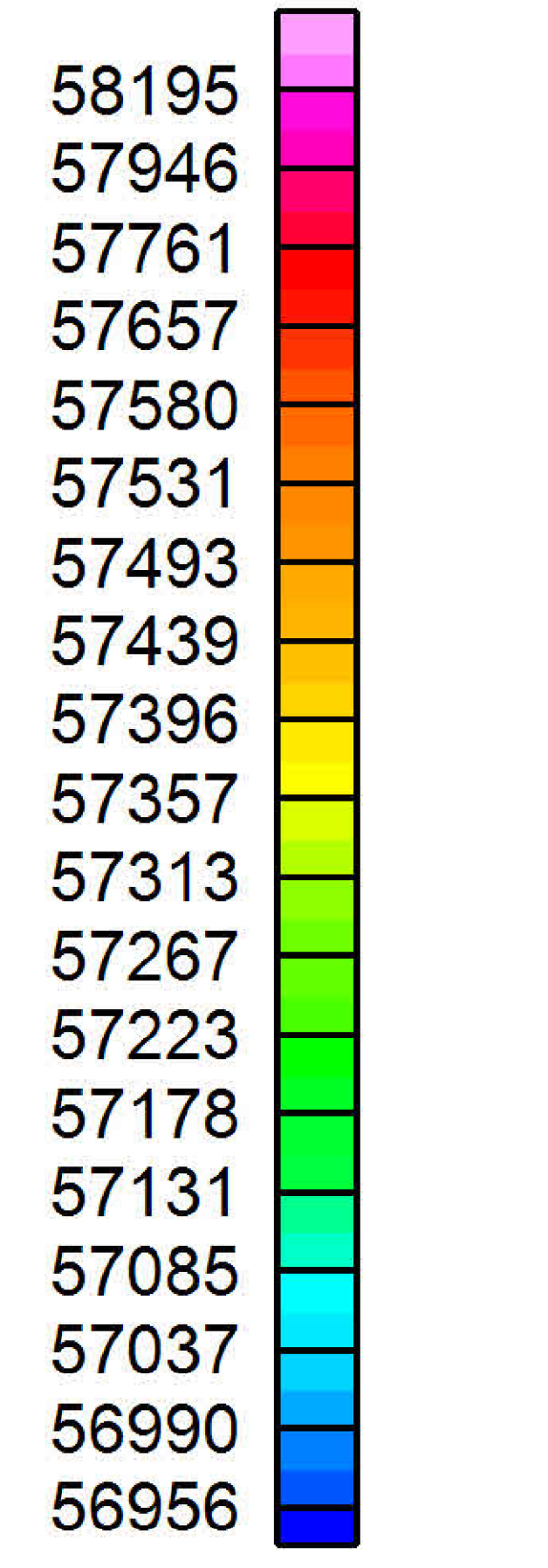
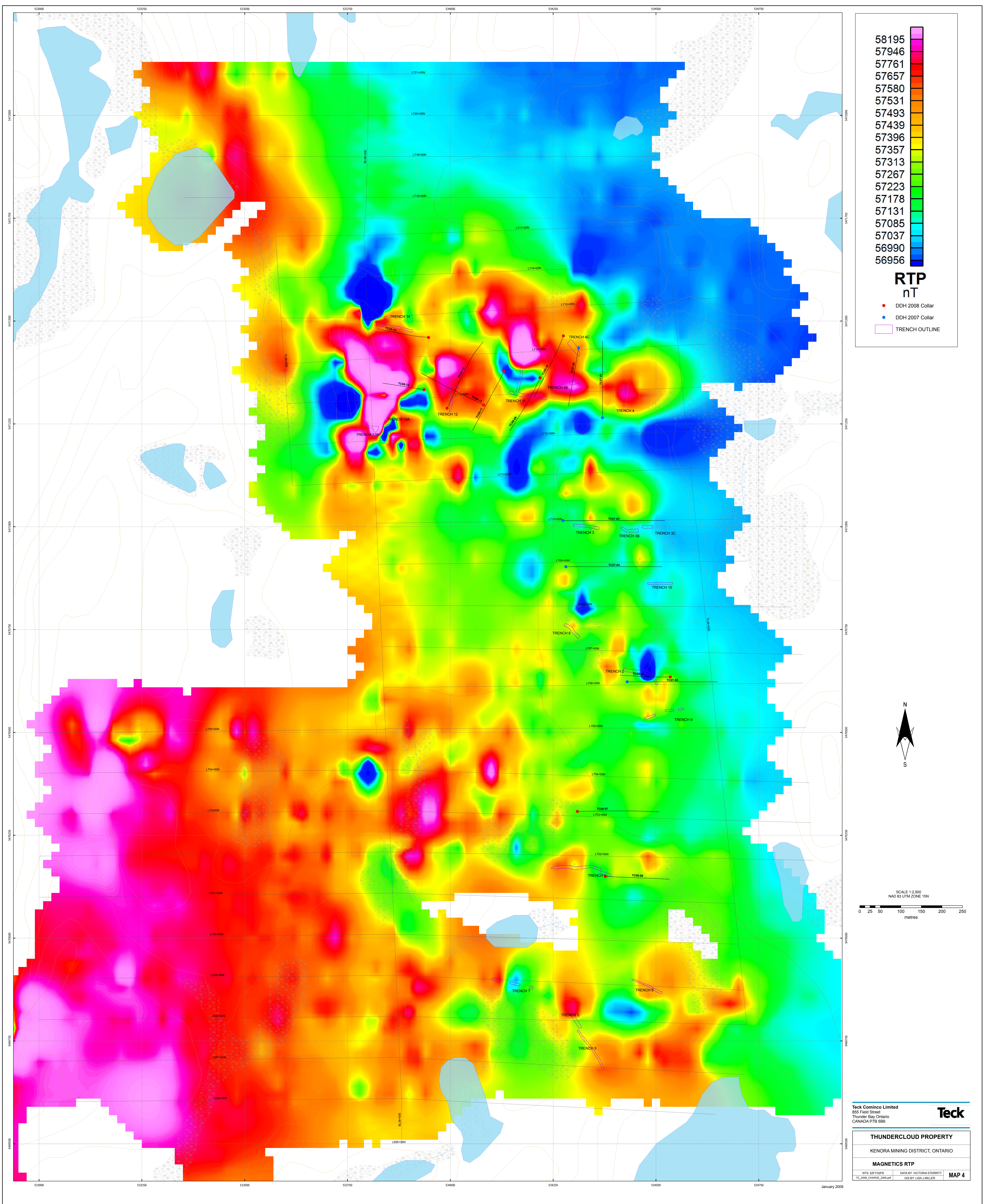
THUNDERCLOUD PROPERTY

KENORA MINING DISTRICT, ONTARIO

IP RESISTIVITY AT SURFACE

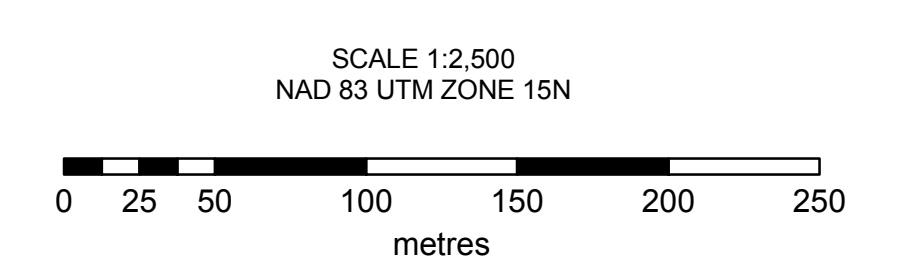
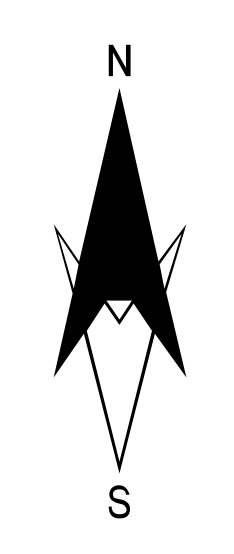
NIS: 20775298 DATA BY: VICTORIA STERRITT
 TC_2008_RES_2009.tif GIS BY: LISA MILLER **MAP 3**

January 2009



RTP
nT

- DDH 2008 Collar
- DDH 2007 Collar
- TRENCH OUTLINE



Teck Cominco Limited
855 Field Street
Thunder Bay Ontario
CANADA P7B 6B6

Teck

THUNDERCLOUD PROPERTY

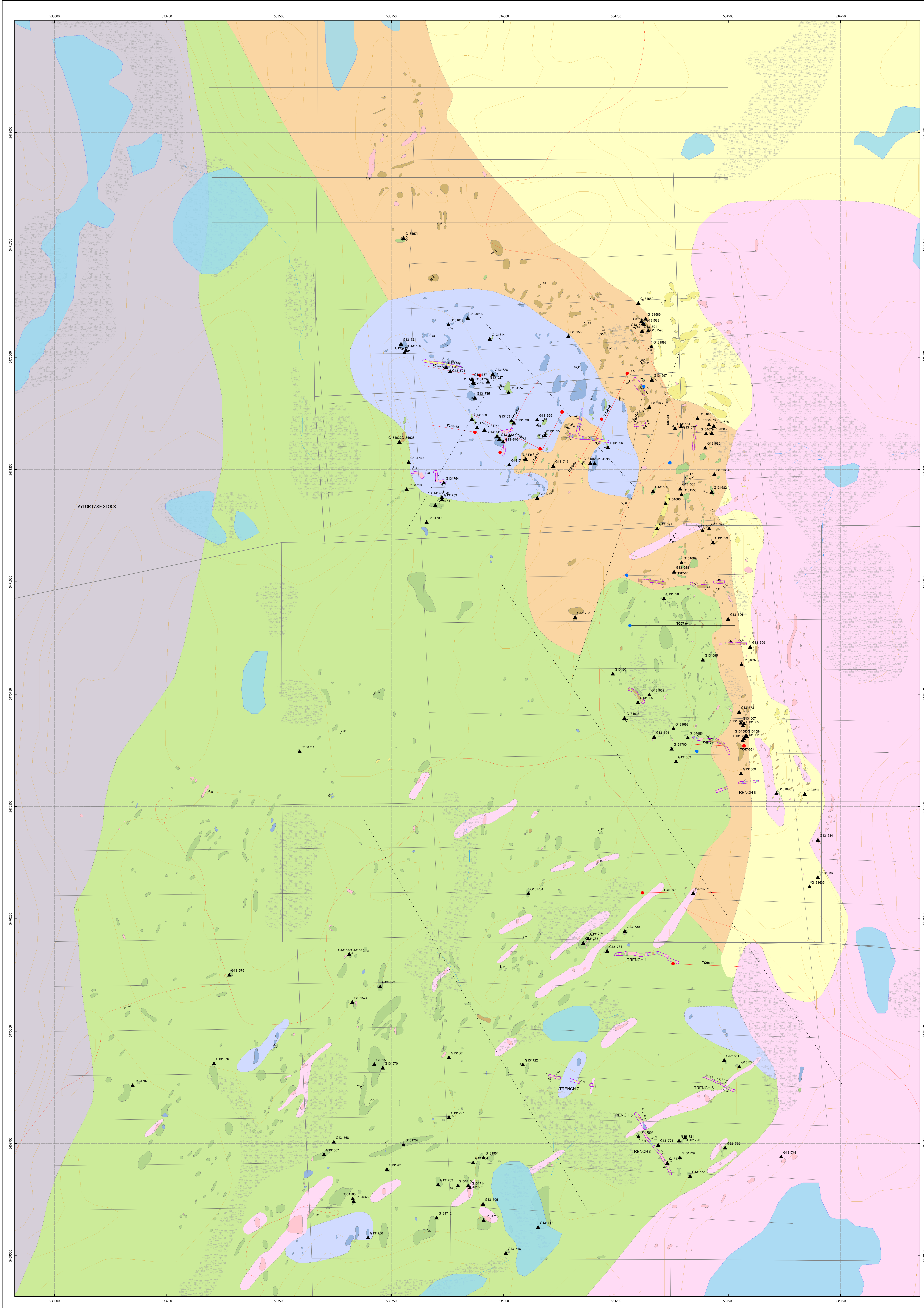
KENORA MINING DISTRICT, ONTARIO

MAGNETICS RTP

NTS: S07F2018 DATA BY: VICTORIA STERRETT
TE: 2008, CHARGE: 2008-04 GIS BY: LISA J. MILLER

MAP 4

January 2009

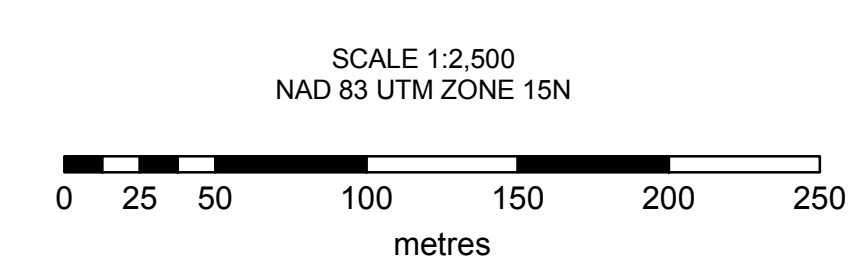
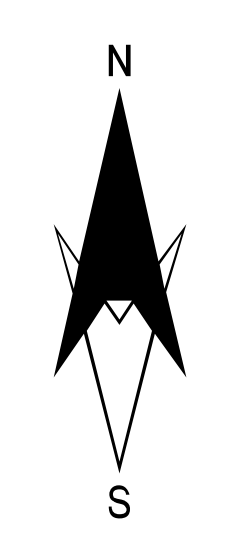


LEGEND

- LATE FELSIC INTRUSIVE
- FELSIC INTRUSIVE ROCKS (COHERENT)
- GABBRO
- CLASTIC SEDIMENTARY ROCKS
- FELSIC VOLCANIC ROCKS (CLASTIC)
- MAFIC VOLCANIC ROCKS

SYMBOLS

- REGION
- FAULT
- FOLIATION
- JOINT
- LINEATION
- FOLIOS
- SHEAR
- VEIN
- FAULT (INTERPRETED)
- INFERRED CONTACT
- OUTCROP
- TRENCH OUTLINE
- COLLAR LOCATION 2007
- COLLAR LOCATION 2008
- GRID



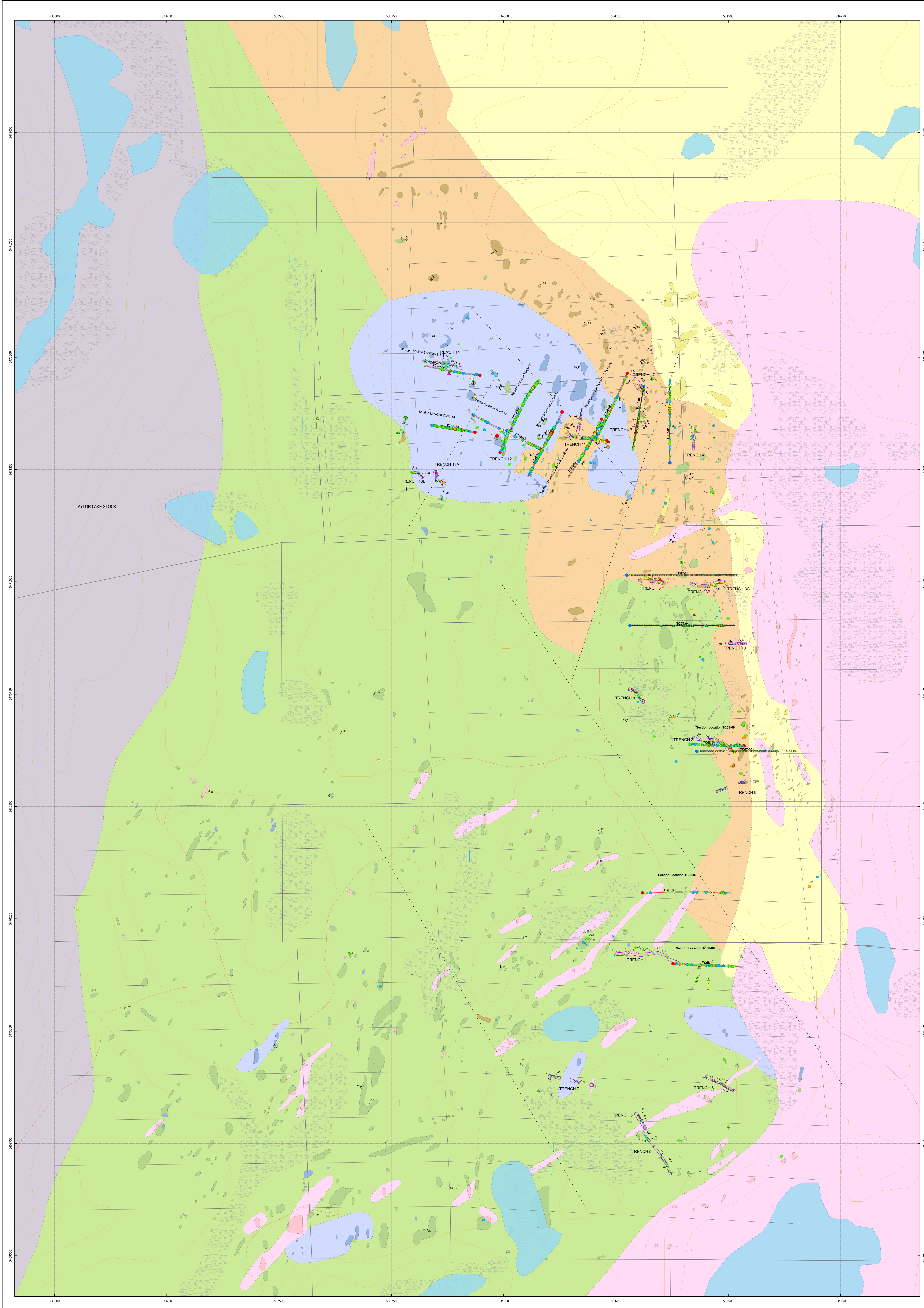
Teck Cominco Limited
855 Field Street
Thunder Bay Ontario
CANADA P7B 6B6

THUNDERCLOUD PROPERTY

KENORA MINING DISTRICT, ONTARIO

2008 Field Sample Location

NTS: 52775278 DATA BY: ANDREW SHANNON GIS BY: LISA J. MILLER **MAP 5**



LEGEND

- LATE FELSIC INTRUSIVE
- FELSIC INTRUSIVE ROCKS (COHERENT)
- GABBRO
- CLASTIC SEDIMENTARY ROCKS
- FELSIC VOLCANIC ROCKS (ELASTIC)
- MAFIC VOLCANIC ROCKS

SYMBOLS

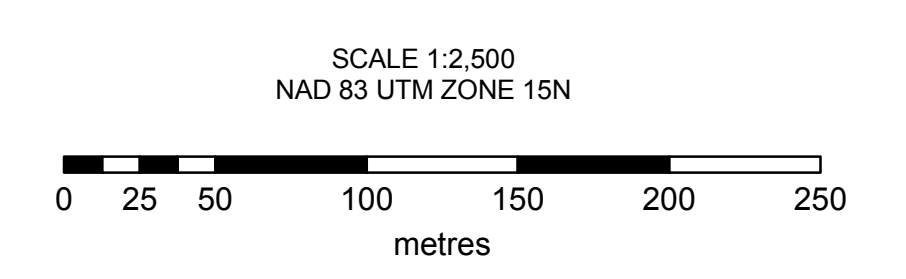
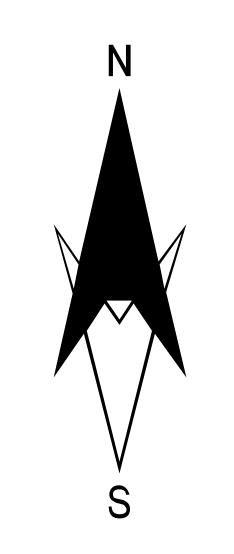
- REGION
- FAULT
- FOLIATION
- JOINT
- LINEATION
- FOLIOS
- SHEAR
- VEIN
- FAULT (INTERPRETED)
- INFERRED CONTACT
- OUTCROP
- TRENCH OUTLINE
- COLLAR LOCATION 2007
- COLLAR LOCATION 2008
- GRID
- SAMPLE LOCATION

GEOCHEMISTRY 2008

- <0.050 ppm Au
- 0.05 - 0.10 ppm Au
- 0.10 - 0.50 ppm Au
- 0.50 - 1.00 ppm Au
- 1.00 - 5.00 ppm Au
- 5.00 - 10.00 ppm Au
- >10.00 ppm Au

GEOCHEMISTRY 2007

- <0.050 ppm Au
- 0.05 - 0.10 ppm Au
- 0.10 - 0.50 ppm Au
- 0.50 - 1.00 ppm Au
- 1.00 - 5.00 ppm Au
- 5.00 - 10.00 ppm Au
- >10.00 ppm Au



Teck Cominco Limited
 855 Field Street
 Thunder Bay Ontario
 CANADA P7B 6B6

THUNDERCLOUD PROPERTY

KENORA MINING DISTRICT, ONTARIO

2008 DRILLING PLAN MAP

NTS: 52775278 DATA BY: ANDREW SHANNON
 TC 088 (REVISED PLAN 2008) GIS BY: LISA J. MILLER

MAP 6