

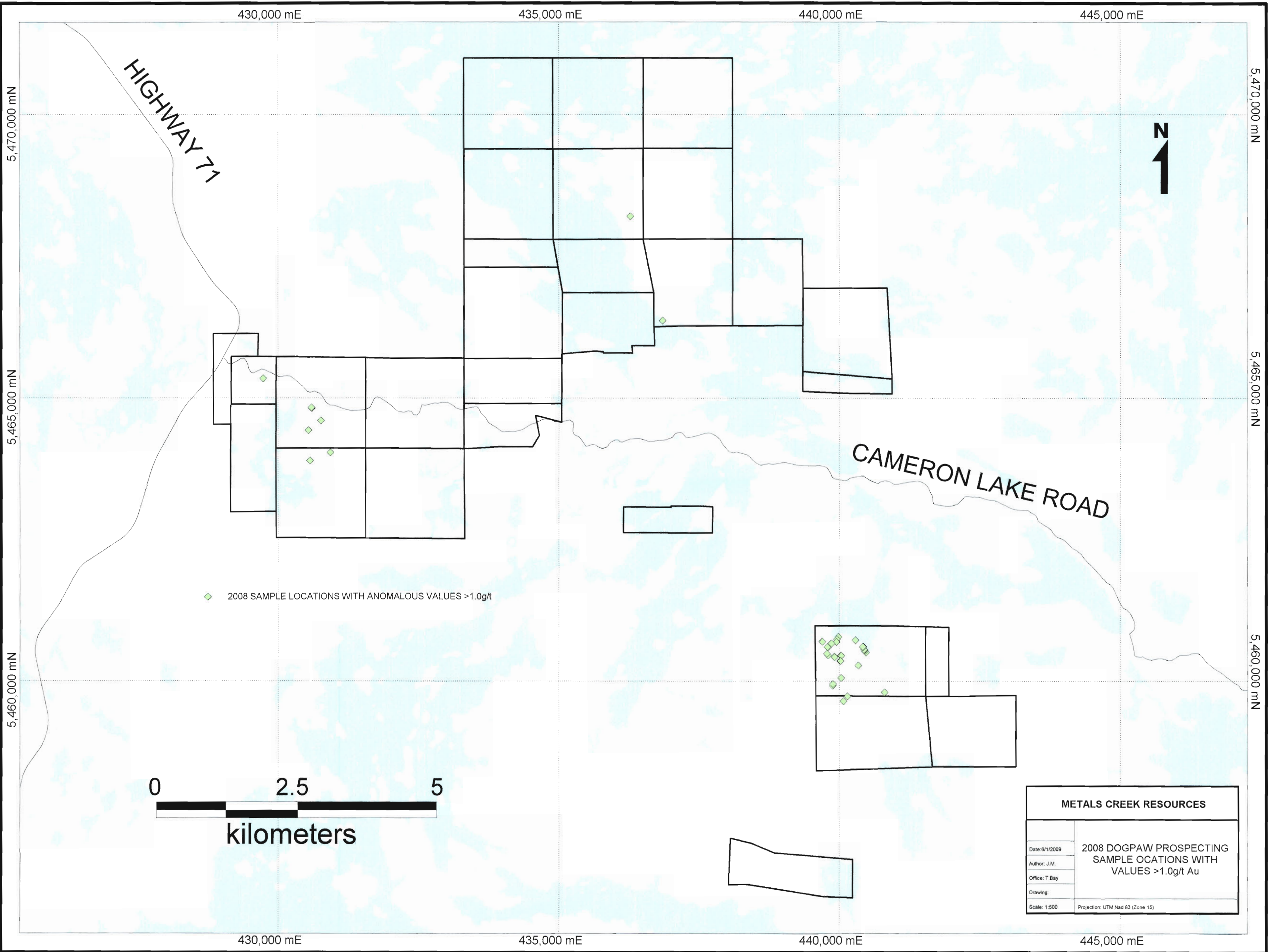
HIGHWAY 71

CAMERON LAKE ROAD

◆ 2008 GRAB SAMPLE

0 2.5 5  
kilometers

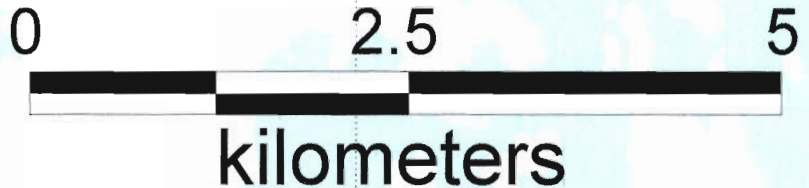
<b>METALS CREEK RESOURCES</b>	
Date: 10/12/2008	<b>2008 PROSPECTING PROGRAM SAMPLE LOCATIONS</b>
Author: J.M.	
Office: T.BAY	
Drawing:	
Scale: 1:500	
Projection: UTM Zone 15 (NAD 83)	



HIGHWAY 71

CAMERON LAKE ROAD

◆ 2008 SAMPLE LOCATIONS WITH ANOMALOUS VALUES >1.0g/t



METALS CREEK RESOURCES	
Date: 6/1/2008	2008 DOGPAW PROSPECTING SAMPLE LOCATIONS WITH VALUES >1.0g/t Au
Author: J.M.	
Office: T.Bay	
Drawing:	
Scale: 1:500	Projection: UTM Nad 83 (Zone 15)

430,000 mE

435,000 mE

440,000 mE

445,000 mE

5,470,000 mN

5,470,000 mN

5,465,000 mN

5,465,000 mN

5,460,000 mN

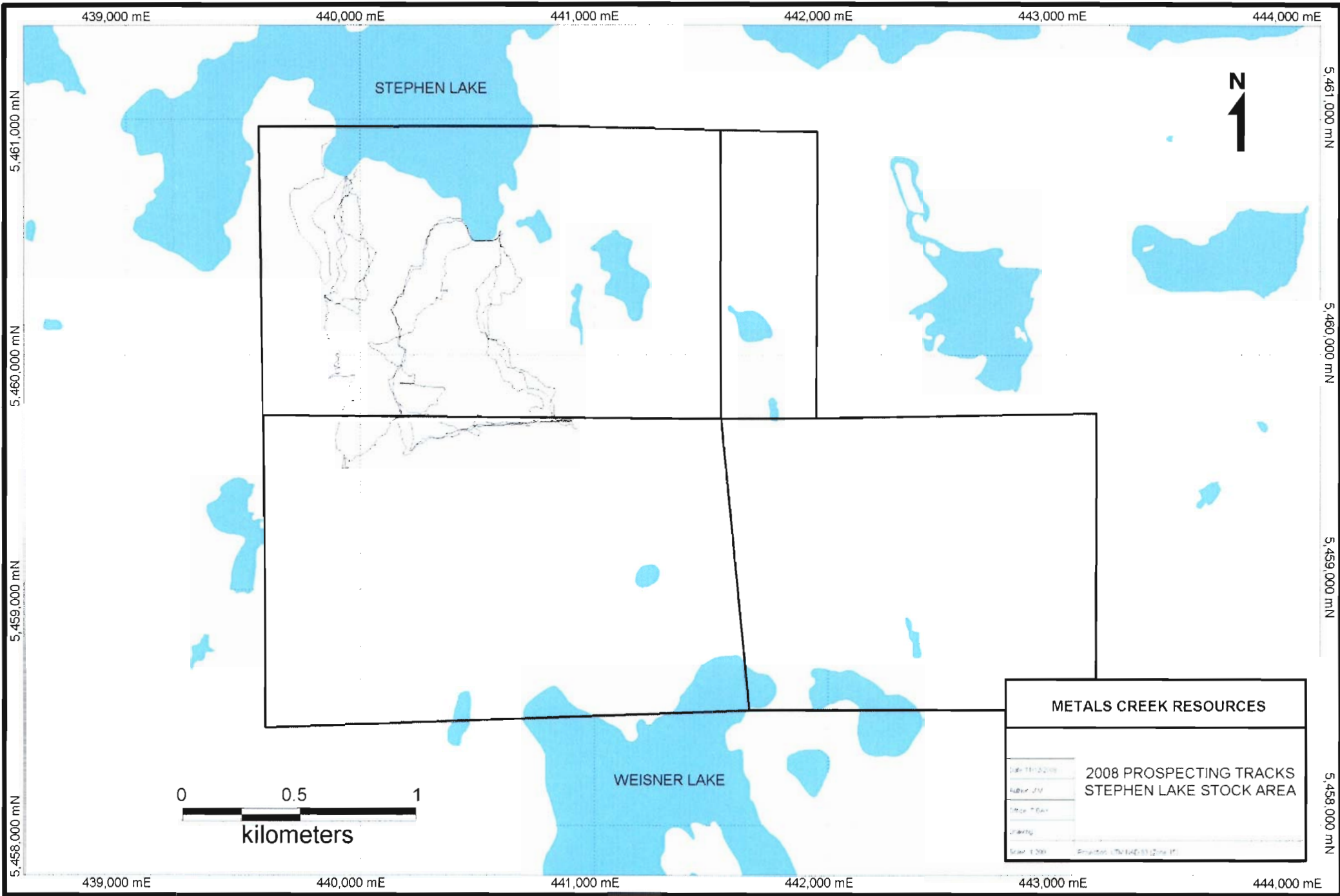
5,460,000 mN

430,000 mE

435,000 mE

440,000 mE

445,000 mE



439,000 mE

440,000 mE

441,000 mE

442,000 mE

443,000 mE

444,000 mE

STEPHEN LAKE

N  
1

5,461,000 mN

5,461,000 mN

5,460,000 mN

5,460,000 mN

5,459,000 mN

5,459,000 mN

5,458,000 mN

5,458,000 mN

439,000 mE

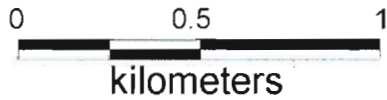
440,000 mE

441,000 mE

442,000 mE

443,000 mE

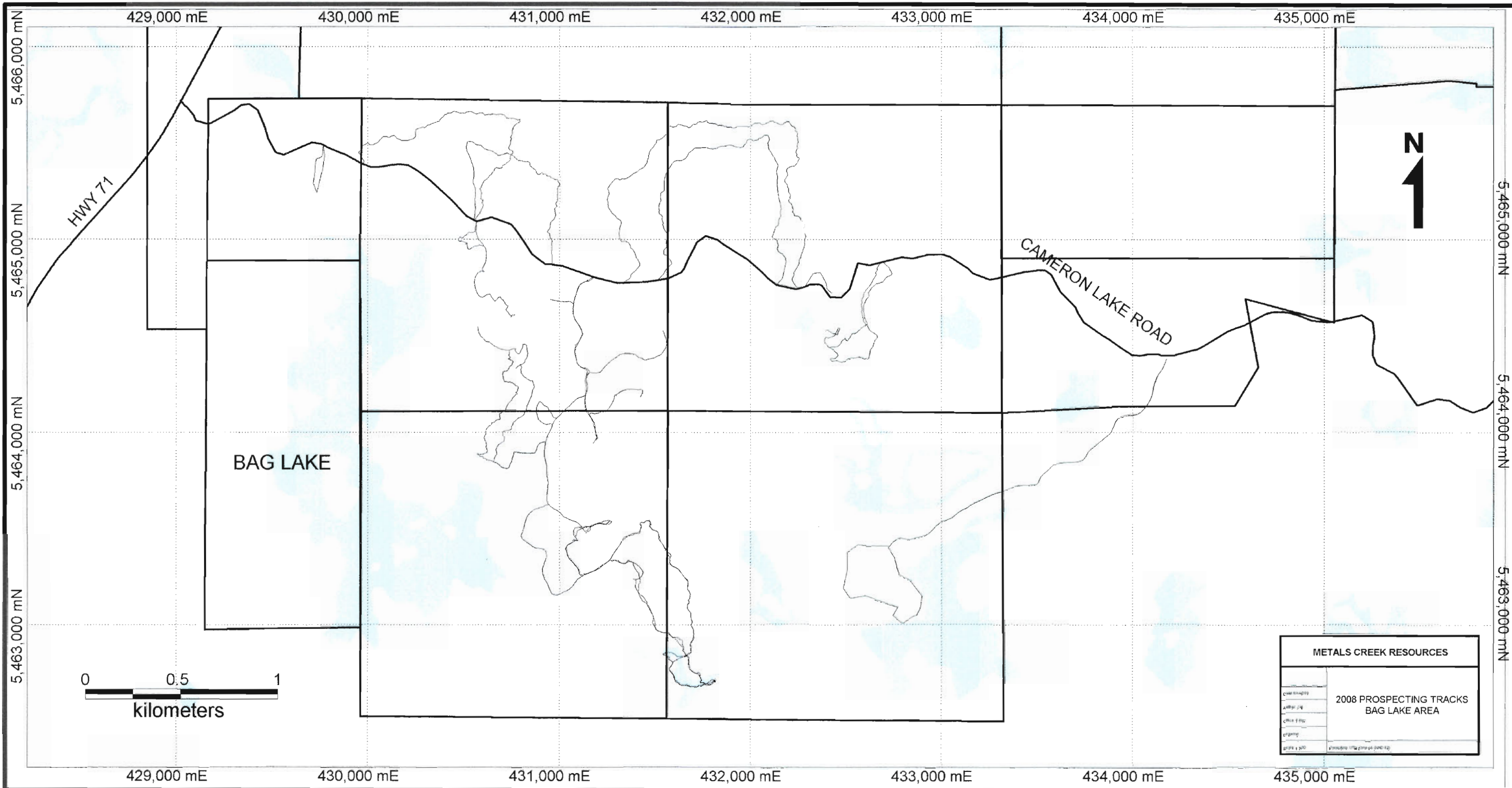
444,000 mE



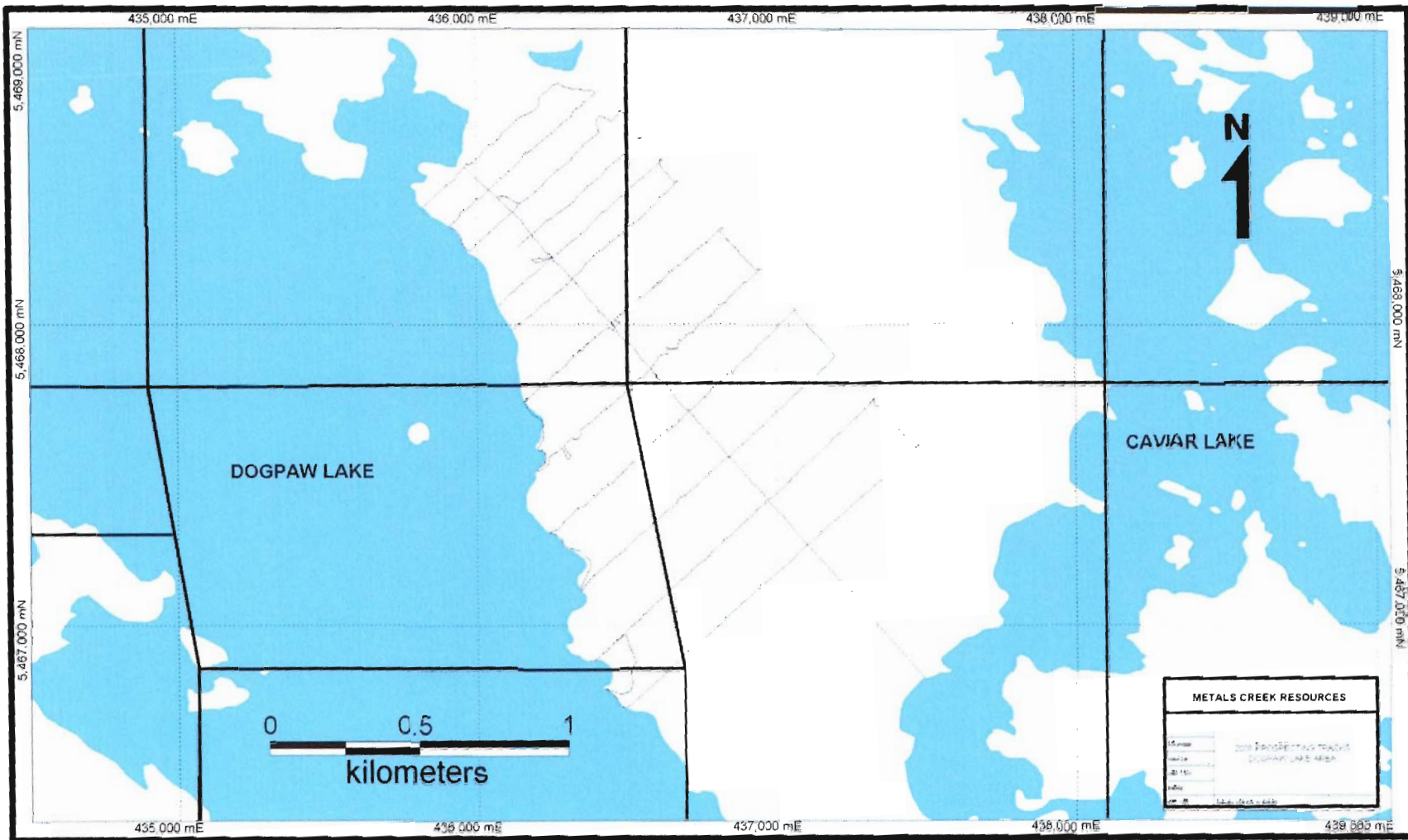
WEISNER LAKE

METALS CREEK RESOURCES

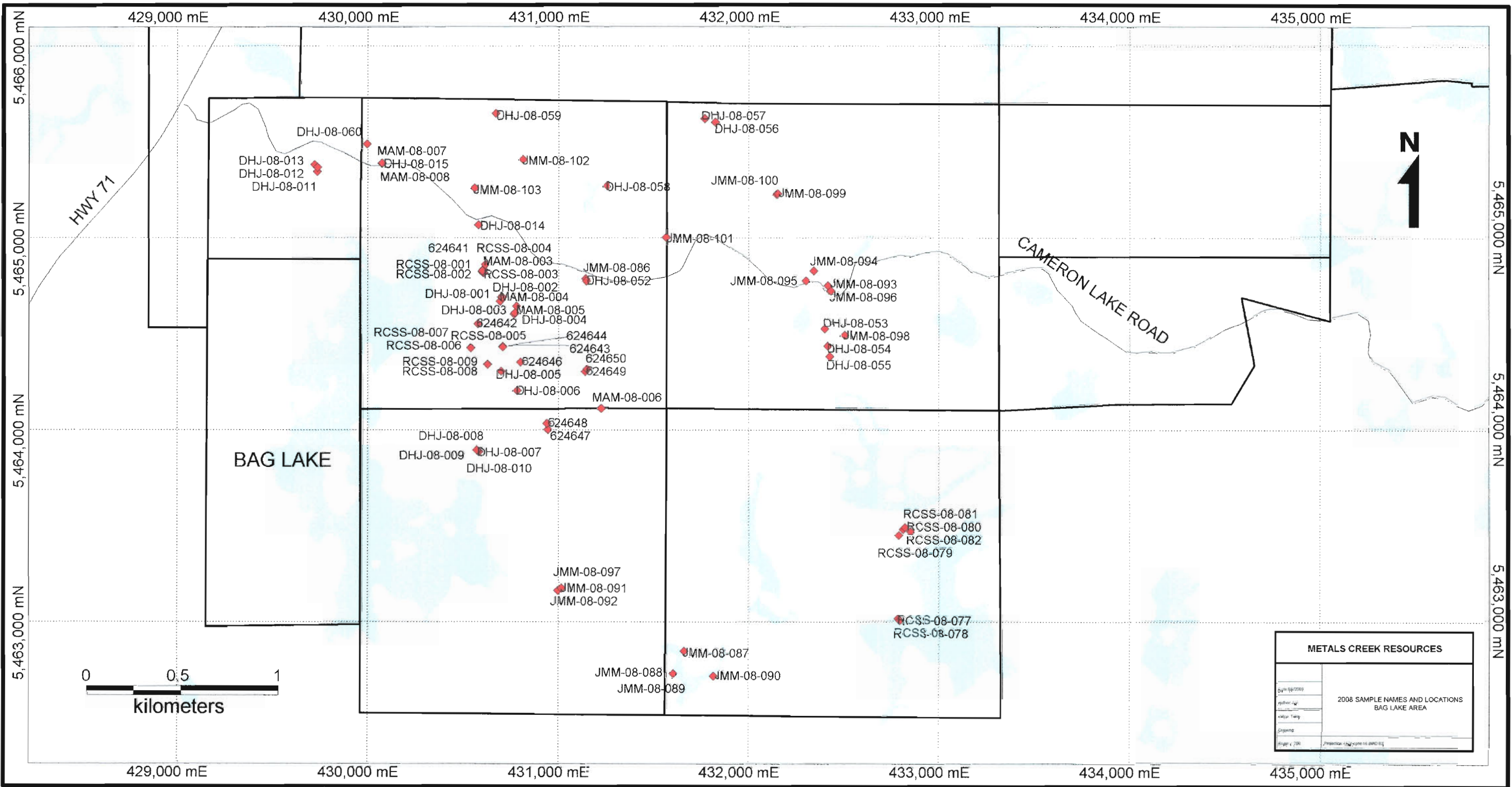
2008 PROSPECTING TRACKS  
STEPHEN LAKE STOCK AREA



METALS CREEK RESOURCES	
2008 PROSPECTING TRACKS	2008 PROSPECTING TRACKS
BAG LAKE AREA	BAG LAKE AREA







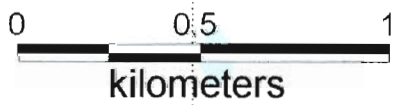
BAG LAKE

CAMERON LAKE ROAD

HWY 71

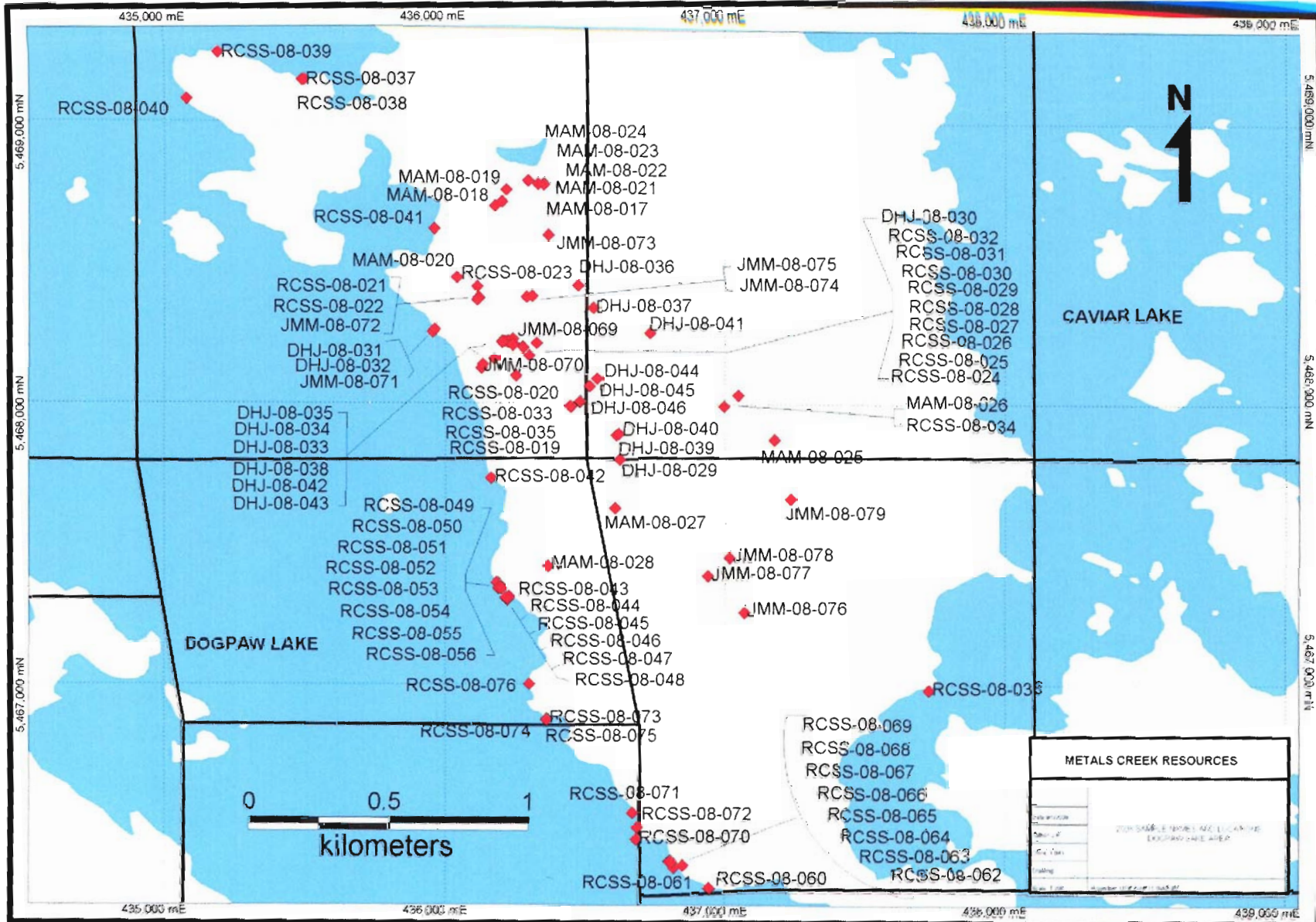
METALS CREEK RESOURCES	
Date: 09/20/09	2008 SAMPLE NAMES AND LOCATIONS BAG LAKE AREA
Author: JG	
Editor: JG	
Designer:	
Scale: 1:2500	

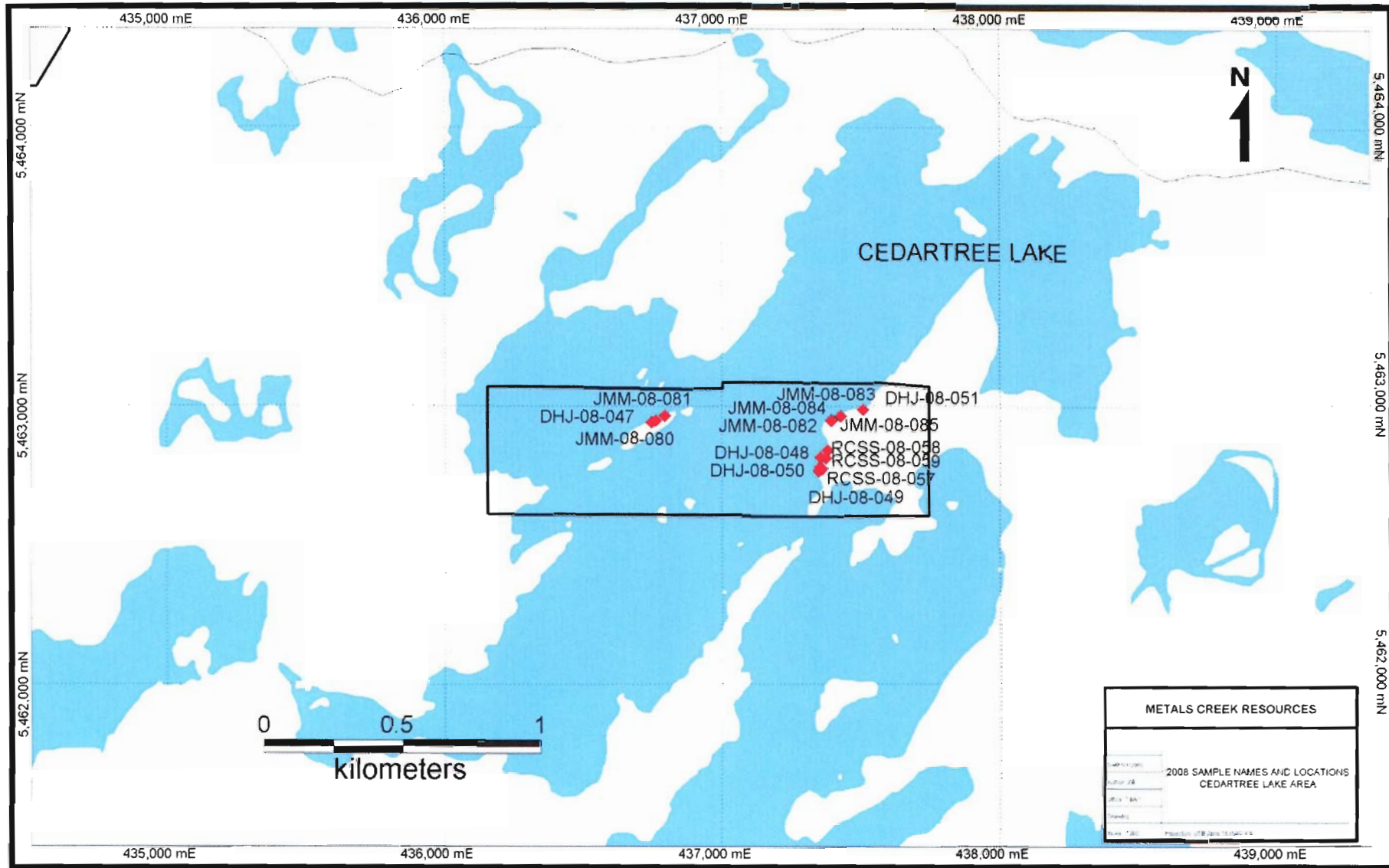
- DHJ-08-013
- DHJ-08-012
- DHJ-08-011
- DHJ-08-060
- MAM-08-007
- DHJ-08-015
- MAM-08-008
- DHJ-08-059
- JMM-08-102
- DHJ-08-057
- DHJ-08-056
- JMM-08-100
- JMM-08-099
- DHJ-08-058
- JMM-08-094
- JMM-08-093
- JMM-08-096
- DHJ-08-014
- JMM-08-101
- JMM-08-095
- JMM-08-098
- JMM-08-098
- DHJ-08-053
- DHJ-08-054
- DHJ-08-055
- 624641
- RCSS-08-004
- MAM-08-003
- JMM-08-086
- RCSS-08-001
- RCSS-08-002
- RCSS-08-003
- DHJ-08-052
- DHJ-08-001
- DHJ-08-002
- MAM-08-004
- DHJ-08-003
- MAM-08-005
- 624642
- DHJ-08-004
- RCSS-08-007
- RCSS-08-005
- 624644
- RCSS-08-006
- 624643
- 624650
- RCSS-08-009
- RCSS-08-008
- 624646
- 624649
- DHJ-08-005
- DHJ-08-006
- MAM-08-006
- DHJ-08-008
- 624648
- 624647
- DHJ-08-009
- DHJ-08-007
- DHJ-08-010
- JMM-08-097
- JMM-08-091
- JMM-08-092
- RCSS-08-081
- RCSS-08-080
- RCSS-08-082
- RCSS-08-079
- JMM-08-087
- JMM-08-088
- JMM-08-089
- JMM-08-090
- RCSS-08-077
- RCSS-08-078

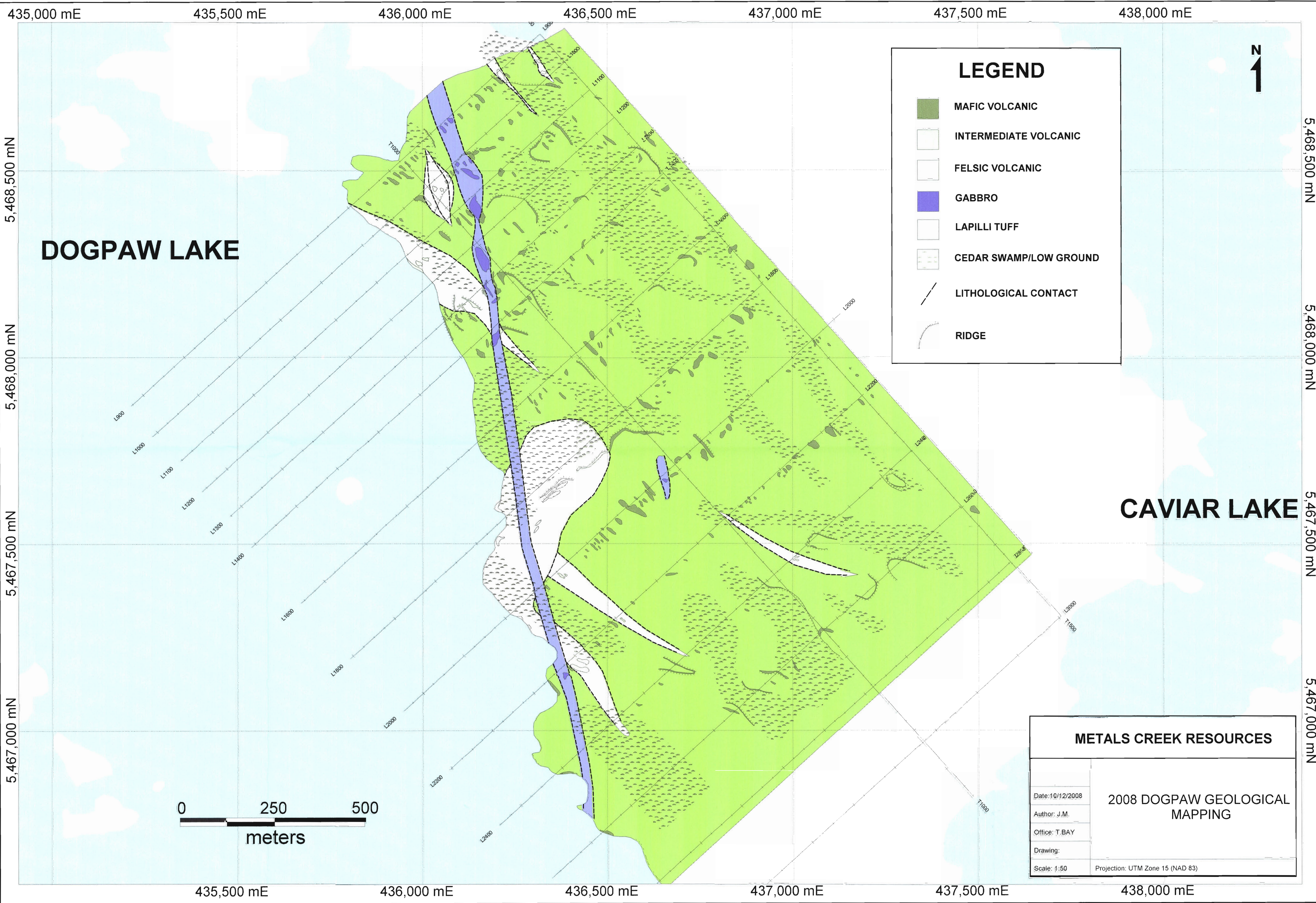










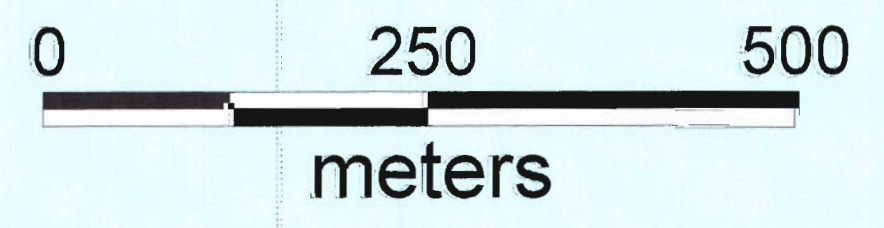


**DOGPAW LAKE**

**CAVIAR LAKE**

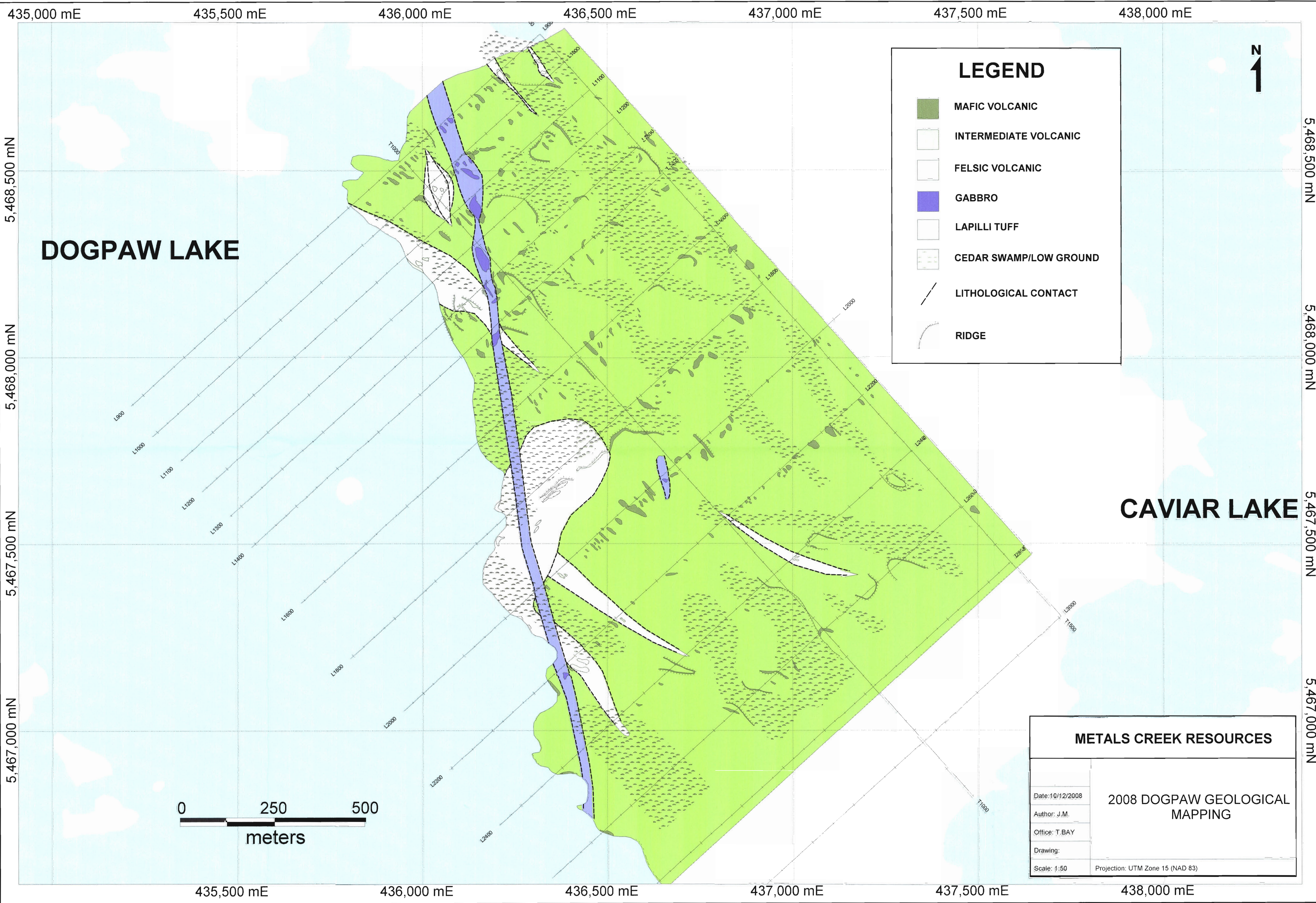
**LEGEND**

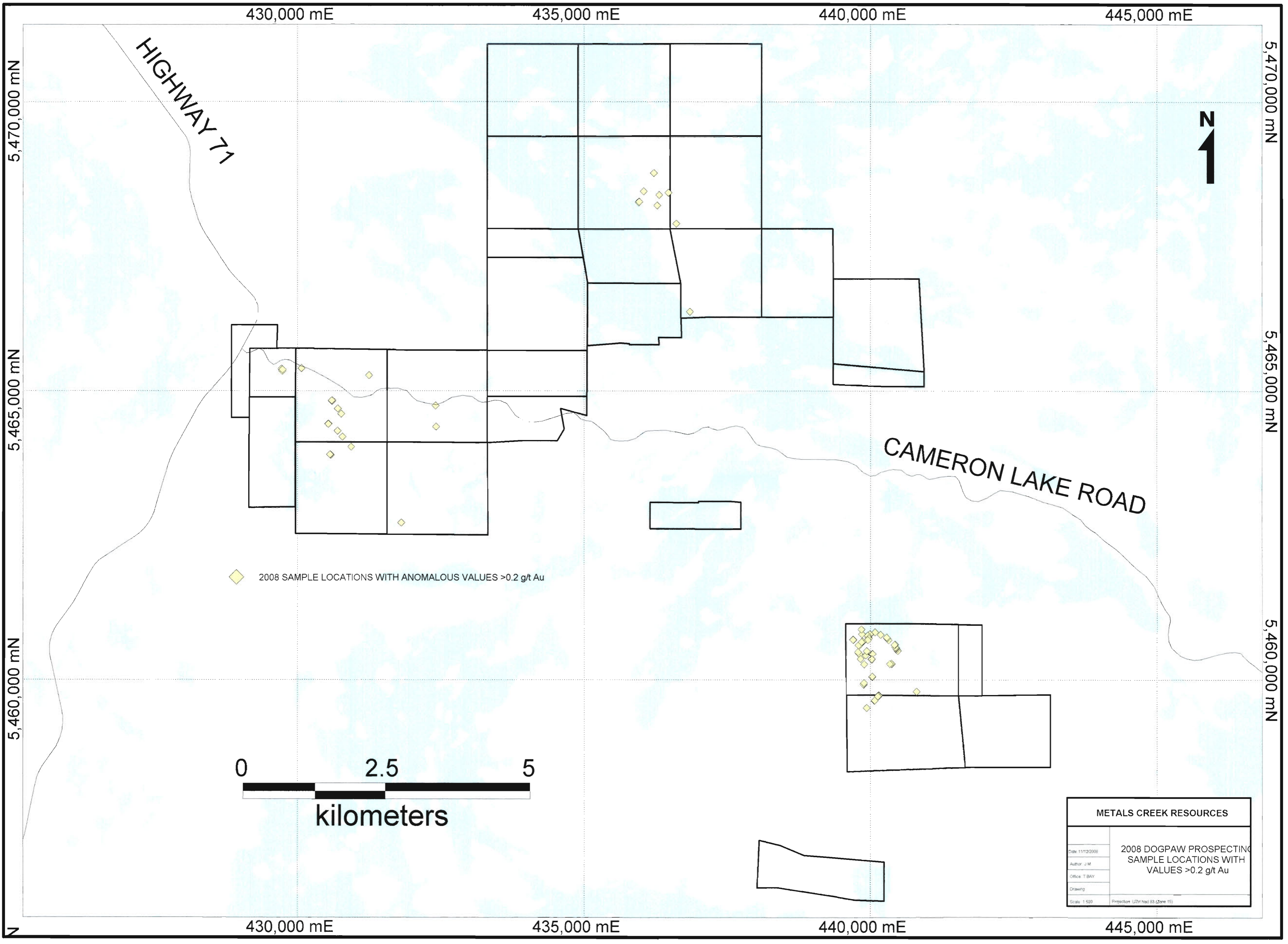
- MAFIC VOLCANIC
- INTERMEDIATE VOLCANIC
- FELSIC VOLCANIC
- GABBRO
- LAPILLI TUFF
- CEDAR SWAMP/LOW GROUND
- LITHOLOGICAL CONTACT
- RIDGE



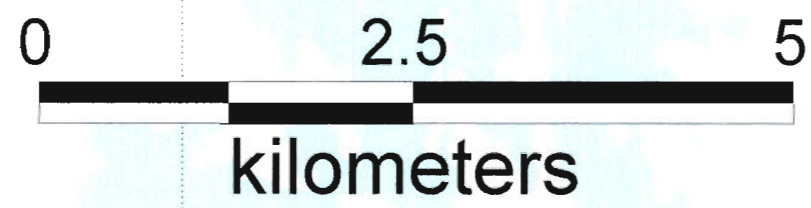
**METALS CREEK RESOURCES**

Date: 10/12/2008	<b>2008 DOGPAW GEOLOGICAL MAPPING</b>
Author: J.M.	
Office: T.BAY	
Drawing:	
Scale: 1:50	
Projection: UTM Zone 15 (NAD 83)	





◆ 2008 SAMPLE LOCATIONS WITH ANOMALOUS VALUES >0.2 g/t Au



METALS CREEK RESOURCES	
Date: 11/12/2008	<b>2008 DOGPAW PROSPECTING SAMPLE LOCATIONS WITH VALUES &gt;0.2 g/t Au</b>
Author: J.M.	
Office: T.BAY	
Drawing:	
Scale: 1:500	
Projection: UTM, Nad 83, (Zone 15)	