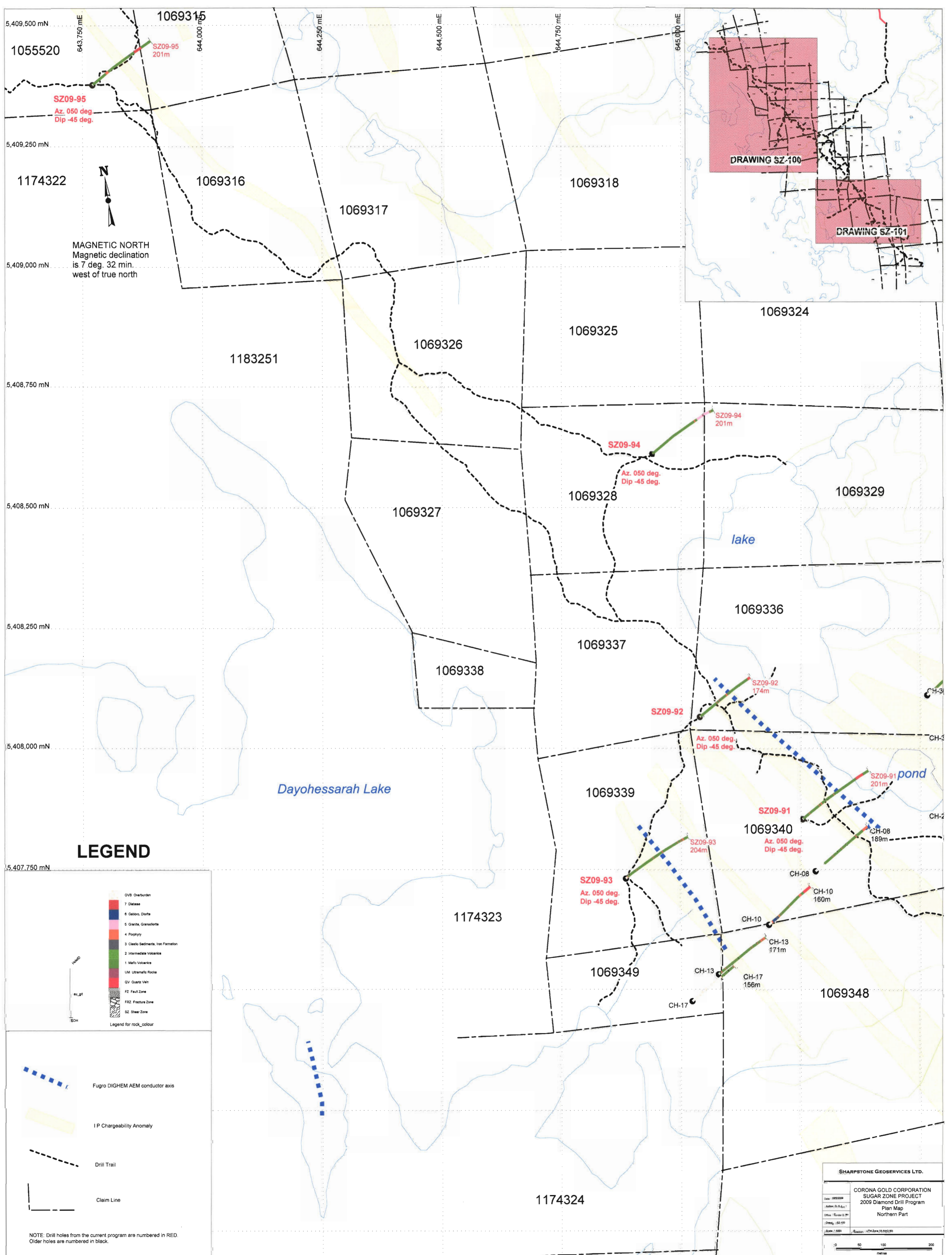


SHARPSTONE GEOSERVICES LTD.

CORONA GOLD CORPORATION
SUGAR ZONE PROJECT
ONTARIO
CLAIM MAP

Date: 12/20/05
Author: D.S. Hart
Client: Thibault Bay
Drawing: 02-09
Scale: 1:25000 Projection: UTM Zone 16 (NAD 83)

0 500 1000
metres



5,409,500 mN
1055520
643,750 mE
644,000 mE
644,250 mE
644,500 mE
644,750 mE
645,000 mE

5,409,250 mN
1174322
1069316
1069317
1069318

5,409,000 mN
MAGNETIC NORTH
Magnetic declination
is 7 deg. 32 min.
west of true north

5,408,750 mN
1183251
1069326
1069325
1069324

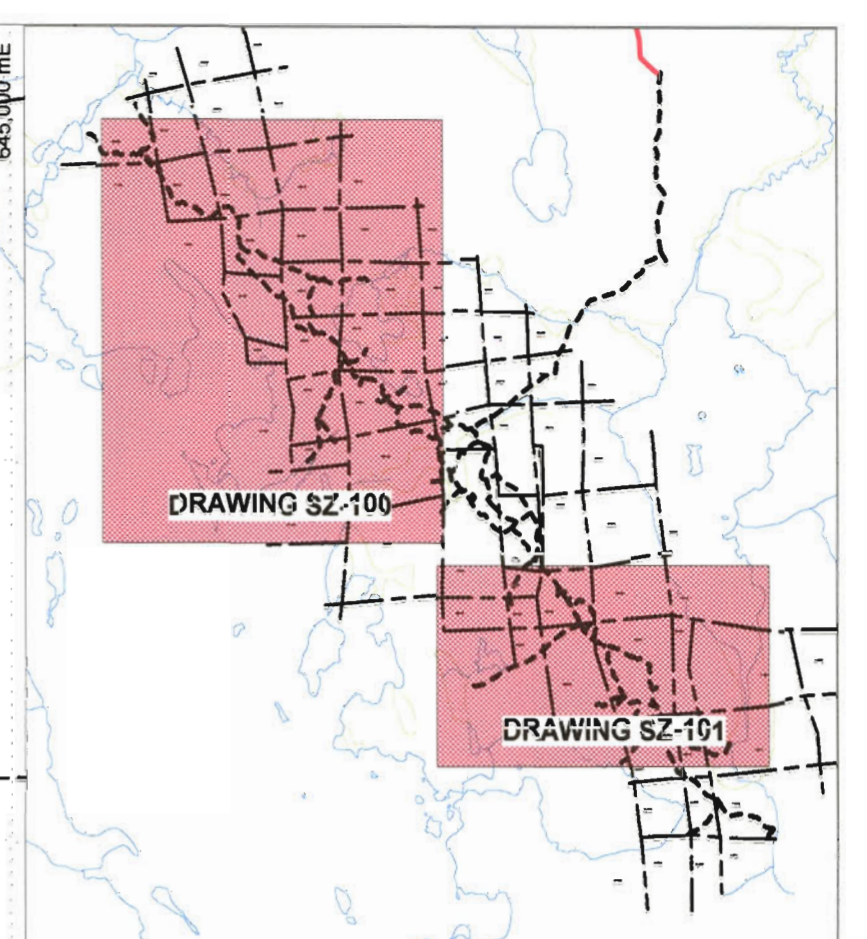
5,408,500 mN
1069327
1069328
1069329
lake

5,408,250 mN
1069337
1069336

5,408,000 mN
1069338
1069337
1069339
1069340
pond

5,407,750 mN
1174323
1069339
1069340
1069349
1069348

1174324



LEGEND

7	Dabase
6	Gabbro, Diorite
5	Granite, Granodiorite
4	Porphyry
3	Clastic Sediments, Iron Formation
2	Intermediate Volcanics
1	Mafic Volcanics
UM	Ultramafic Rocks
QV	Quartz Vein
FRZ	Fracture Zone
SZ	Shear Zone

Legend for rock_colour

NOTE: Drill holes from the current program are numbered in RED. Older holes are numbered in black.

Fugro DIGHEM AEM conductor axis

IP Chargeability Anomaly

Drill Trail

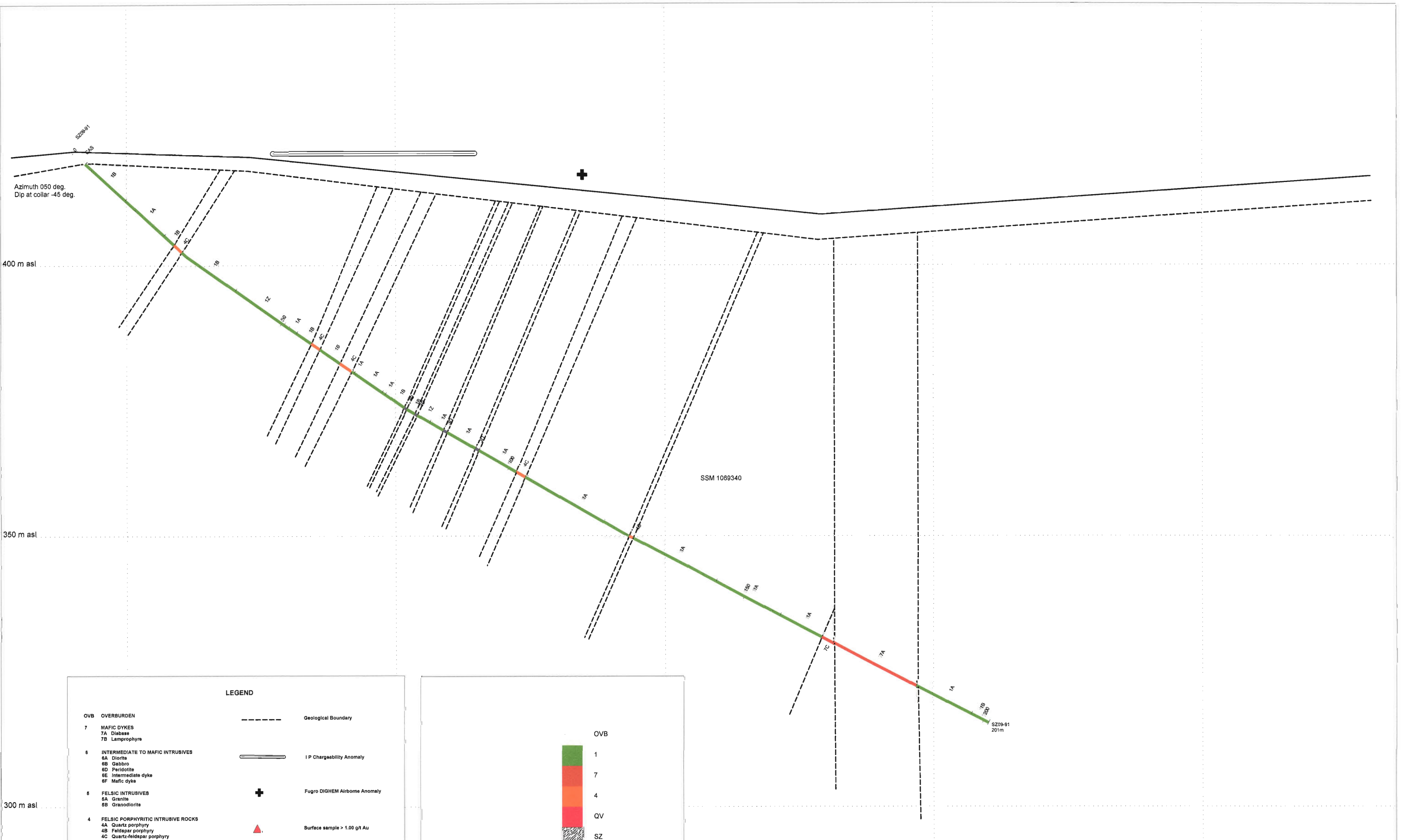
Claim Line

SHARPSTONE GEOSERVICES LTD.

CORONA GOLD CORPORATION
SUGAR ZONE PROJECT
2009 Diamond Drill Program
Plan Map
Northern Part

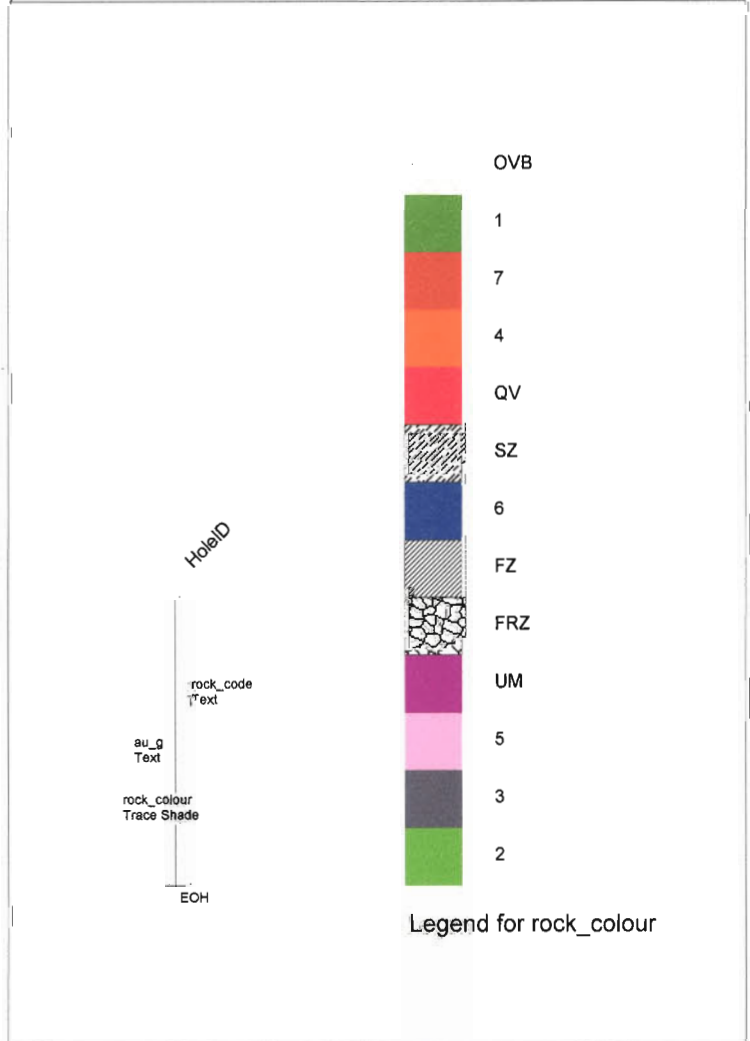
Date: 1/19/2009
Author: D. R. G. & P.
Office: Toronto, Ont. P1
Drawing: SZ-100
Scale: 1:500
Revision: 01/19/2009

1 0 50 100 200
metres



LEGEND

OVB OVERBURDEN	---	Geological Boundary
7 MAFIC DYKES 7A Diabase 7B Lamprophyre	—	I P Chargeability Anomaly
8 INTERMEDIATE TO MAFIC INTRUSIVES 8A Diorite 8B Gabbro 8D Peridotite 8E Intermediate dyke 8F Mafic dyke	+	Fugro DIGHEM Airborne Anomaly
6 FELSIC INTRUSIVES 6A Granite 6B Granodiorite	▲	Surface sample > 1.00 g/t Au
4 FELSIC PORPHYRITIC INTRUSIVE ROCKS 4A Quartz porphyry 4B Feldspar porphyry 4C Quartz-feldspar porphyry 4D Felsite 4E Pegmatite 4F Intermediate porphyry	NOTE: Gold assay values are in g/t Au Only assays > 0.500 g/t are plotted on sections	
3 SEDIMENTS 3B Argillite 3D Iron formation 3E Ferruginous chert 3G Sulphide facies iron formation 3I Arenite		
2 INTERMEDIATE TO FELSIC VOLCANICS 2E Intermediate tuff		
1 MAFIC TO ULTRAMAFIC VOLCANICS 1A Massive flows 1B Pillowed flows 1C Agglomerate 1D Variolitic flows 1E Amygdaloidal, vesicular flows 1F Flow-top breccia 1G Amphibolitic flows 1H Mafic tuff 1I Volcaniclastic 1N Hydrothermally altered basalt 1U Ultramafic flows 1Z Gabbroic end-member with gradational contacts		
FLT, FZ Fault, fault zone FRZ Fracture zone QV, QCV Quartz vein(s), quartz-calcite vein(s) SZ Shear zone UM Ultramafic VG Visible gold		



SHARPSTONE GEOSERVICES LTD.

CORONA GOLD CORPORATION
SUGAR ZONE PROJECT
Diamond Drill Section
SZ09-91
Facing 320 deg.

Date: 20/5/2009
Author: D. S. Hunt
Office: Thunder Bay
Drawing: SZ-102
Scale: 1:500
Projection: Non-Earth (meters)

400 m asl

350 m asl

300 m asl

250 m asl

Azimuth 050 deg.
Dip -45 deg.

SZ09-94
OVB



1A

1Z

50

4A

1A

100

1B

SSM 1069328

SSM 1069329

SSM 1069324

4A

150

1B

5B

5B

FZ

5B

1Z

4C

1B

1A

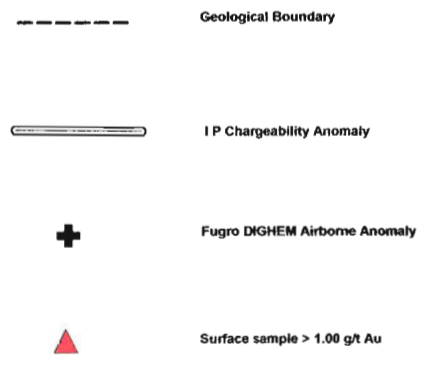
200

1B

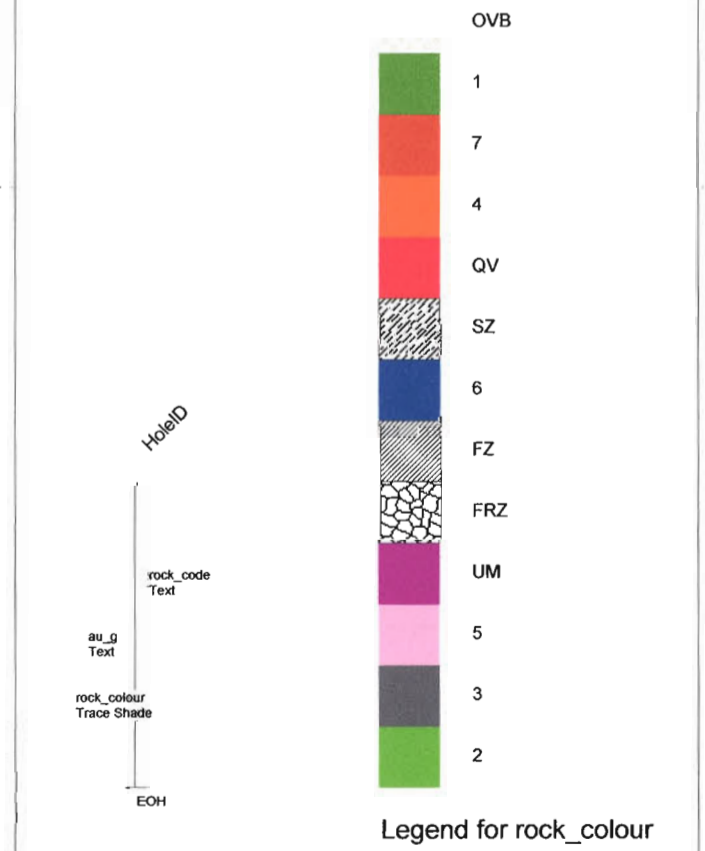
SZ09-94
201m

LEGEND

- OVB OVERBURDEN
 - 7 MAFIC DYKES
 - 7A Diabase
 - 7B Lamprophyre
 - 6 INTERMEDIATE TO MAFIC INTRUSIVES
 - 6A Diorite
 - 6B Gabbro
 - 6D Peridotite
 - 6E Intermediate dyke
 - 6F Mafic dyke
 - 5 FELSIC INTRUSIVES
 - 5A Granite
 - 5B Granodiorite
 - 4 FELSIC PORPHYRITIC INTRUSIVE ROCKS
 - 4A Quartz porphyry
 - 4B Feldspar porphyry
 - 4C Quartz-feldspar porphyry
 - 4D Felsite
 - 4E Pegmatite
 - 4F Intermediate porphyry
 - 3 SEDIMENTS
 - 3B Argillite
 - 3D Iron formation
 - 3E Ferruginous chert
 - 3G Sulphide facies iron formation
 - 3I Arenite
 - 2 INTERMEDIATE TO FELSIC VOLCANICS
 - 2E Intermediate tuff
 - 1 MAFIC TO ULTRAMAFIC VOLCANICS
 - 1A Massive flows
 - 1B Pillowed flows
 - 1C Agglomerate
 - 1D Variolitic flows
 - 1E Amygdaloidal, vesicular flows
 - 1F Flow-top breccia
 - 1G Amphibolitic flows
 - 1H Mafic tuff
 - 1I Volcaniclastics
 - 1N Hydrothermally altered basalt
 - 1U Ultramafic flows
 - 1Z Gabbroic end-member with gradational contacts
- FLT, FZ Fault, fault zone
 FRZ Fracture zone
 QV, QCV Quartz vein(s), quartz-calcite vein(s)
 SZ Shear zone
 UM Ultramafic
 VG Visible gold



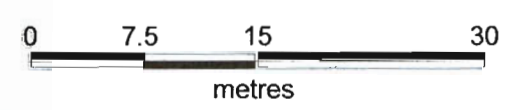
NOTE: Gold assay values are in g/t Au
Only assays > 0.500 g/t are plotted on sections

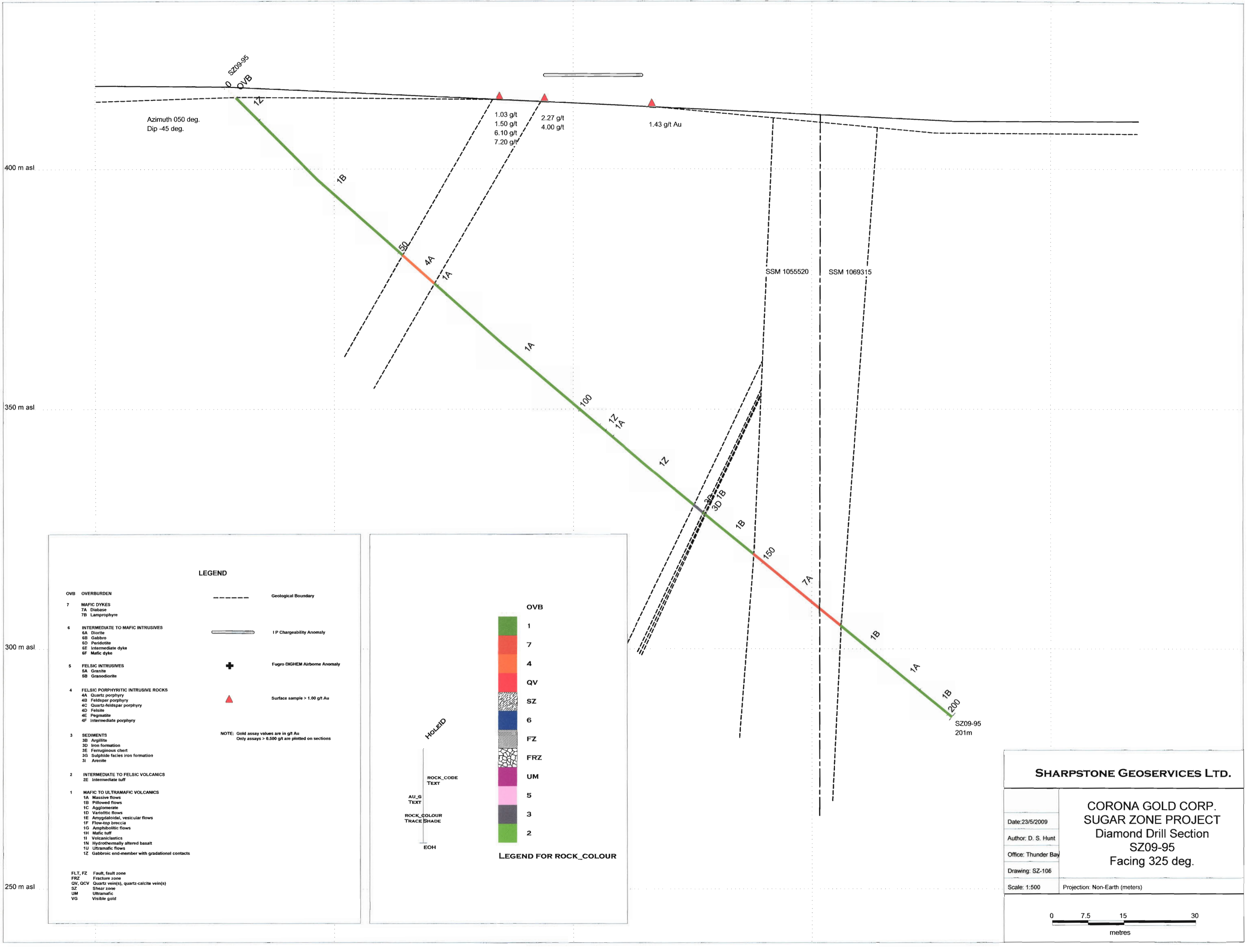


SHARPSTONE GEOSERVICES LTD.

CORONA GOLD CORP.
SUGAR ZONE PROJECT
Diamond Drill Section
SZ09-94
Facing 325 deg.

Date: 23/5/2009
Author: D. S. Hunt
Office: Thunder Bay
Drawing: SZ-105
Scale: 1:500
Projection: Non-Earth (meters)



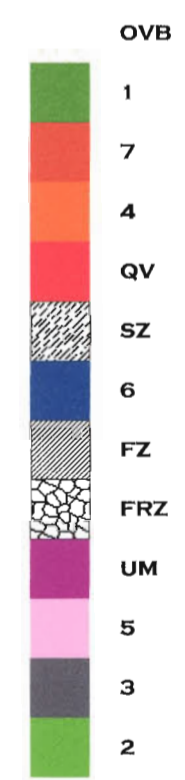


LEGEND

- OVB OVERBURDEN
 - 7 MAFIC DYKES
 - 7A Diabase
 - 7B Lamprophyre
 - 6 INTERMEDIATE TO MAFIC INTRUSIVES
 - 6A Diorite
 - 6S Gabbro
 - 6D Peridotite
 - 6E Intermediate dyke
 - 6F Mafic dyke
 - 5 FELSIC INTRUSIVES
 - 5A Granite
 - 5B Granodiorite
 - 4 FELSIC PORPHYRYTIC INTRUSIVE ROCKS
 - 4A Quartz porphyry
 - 4B Feldspar porphyry
 - 4C Quartz-feldspar porphyry
 - 4D Felsite
 - 4E Pegmatite
 - 4F Intermediate porphyry
 - 3 SEDIMENTS
 - 3B Argillite
 - 3D Iron formation
 - 3E Ferruginous chert
 - 3G Sulphide facies iron formation
 - 3I Arenite
 - 2 INTERMEDIATE TO FELSIC VOLCANICS
 - 2E Intermediate tuff
 - 1 MAFIC TO ULTRAMAFIC VOLCANICS
 - 1A Massive flows
 - 1B Pillowed flows
 - 1C Agglomerate
 - 1D Variolitic flows
 - 1E Amygdaloidal, vesicular flows
 - 1F Flow-top breccia
 - 1G Amphibolitic flows
 - 1H Mafic tuff
 - 1I Volcaniclastics
 - 1N Hydrothermally altered basalt
 - 1U Ultramafic flows
 - 1Z Gabbroic end-member with gradational contacts
- FLT, FZ Fault, fault zone
 FRZ Fracture zone
 QV, QCV Quartz vein(s), quartz-calcite vein(s)
 SZ Shear zone
 UM Ultramafic
 VG Visible gold

- Geological Boundary
- ==== I P Chargeability Anomaly
- ⊕ Fugro DIGHEM Airborne Anomaly
- ▲ Surface sample > 1.00 g/t Au

NOTE: Gold assay values are in g/t Au
 Only assays > 0.500 g/t are plotted on sections



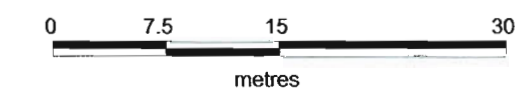
LEGEND FOR ROCK_COLOUR

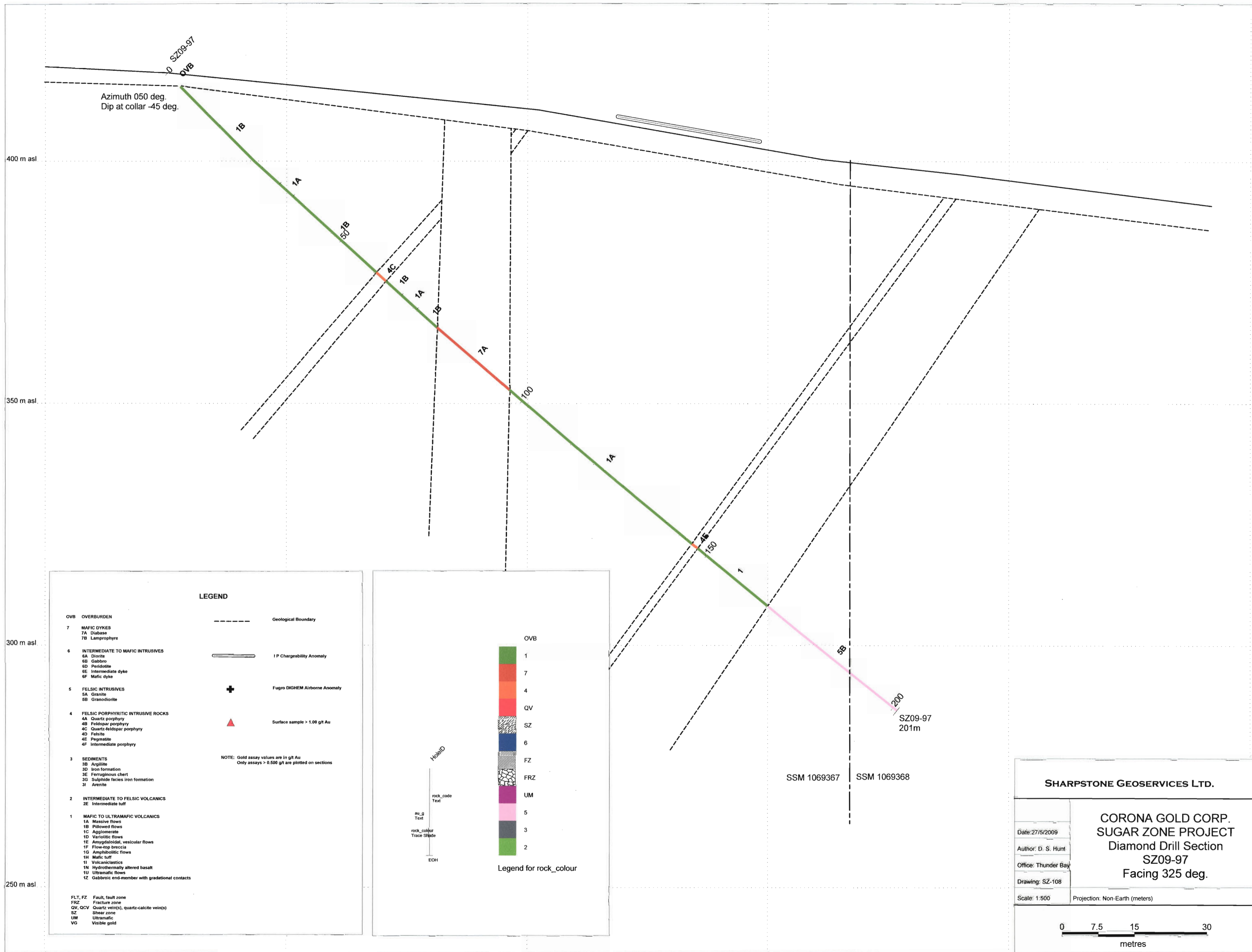
HOLE ID
 ROCK_CODE
 TEXT
 ROCK_COLOUR
 TRACE SHADE
 EOH

SHARPSTONE GEOSERVICES LTD.

CORONA GOLD CORP.
SUGAR ZONE PROJECT
Diamond Drill Section
SZ09-95
Facing 325 deg.

Date: 23/5/2009
 Author: D. S. Hunt
 Office: Thunder Bay
 Drawing: SZ-106
 Scale: 1:500
 Projection: Non-Earth (meters)



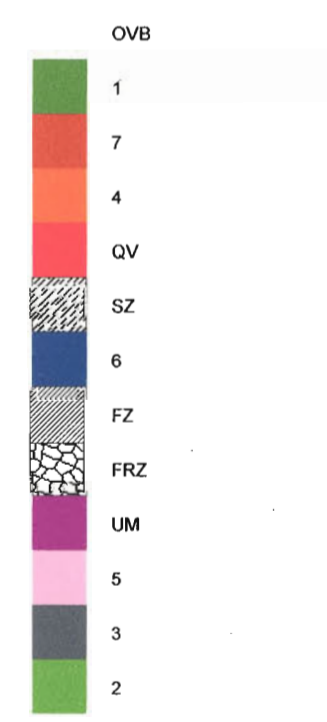


LEGEND

- OVB OVERBURDEN
 - 7 MAFIC DYKES
 - 7A Diabase
 - 7B Lamprophyre
 - 6 INTERMEDIATE TO MAFIC INTRUSIVES
 - 6A Diorite
 - 6B Gabbro
 - 6D Peridotite
 - 6E Intermediate dyke
 - 6F Mafic dyke
 - 5 FELSIC INTRUSIVES
 - 5A Granite
 - 5B Granodiorite
 - 4 FELSIC PORPHYRYTIC INTRUSIVE ROCKS
 - 4A Quartz porphyry
 - 4B Feldspar porphyry
 - 4C Quartz-feldspar porphyry
 - 4D Felsite
 - 4E Pegmatite
 - 4F Intermediate porphyry
 - 3 SEDIMENTS
 - 3B Argillite
 - 3D Iron formation
 - 3E Ferruginous chert
 - 3G Sulphide facies iron formation
 - 3I Arenite
 - 2 INTERMEDIATE TO FELSIC VOLCANICS
 - 2E Intermediate tuff
 - 1 MAFIC TO ULTRAMAFIC VOLCANICS
 - 1A Massive flows
 - 1B Pillowed flows
 - 1C Agglomerate
 - 1D Varioitic flows
 - 1E Amygdaloidal, vesicular flows
 - 1F Flow-top breccia
 - 1G Amphibolitic flows
 - 1H Mafic tuff
 - 1I Volcaniclastics
 - 1N Hydrothermally altered basalt
 - 1U Ultramafic flows
 - 1Z Gabbroic end-member with gradational contacts
- FLT, FZ Fault, fault zone
 FRZ Fracture zone
 QV, QCV Quartz vein(s), quartz-calcite vein(s)
 SZ Shear zone
 UM Ultramafic
 VG Visible gold

- Geological Boundary
- ==== IP Chargeability Anomaly
- + Fugro DIGHEM Airborne Anomaly
- ▲ Surface sample > 1.00 g/t Au

NOTE: Gold assay values are in g/t Au
 Only assays > 0.500 g/t are plotted on sections



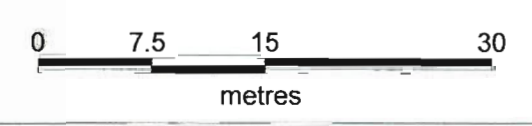
Legend for rock_colour

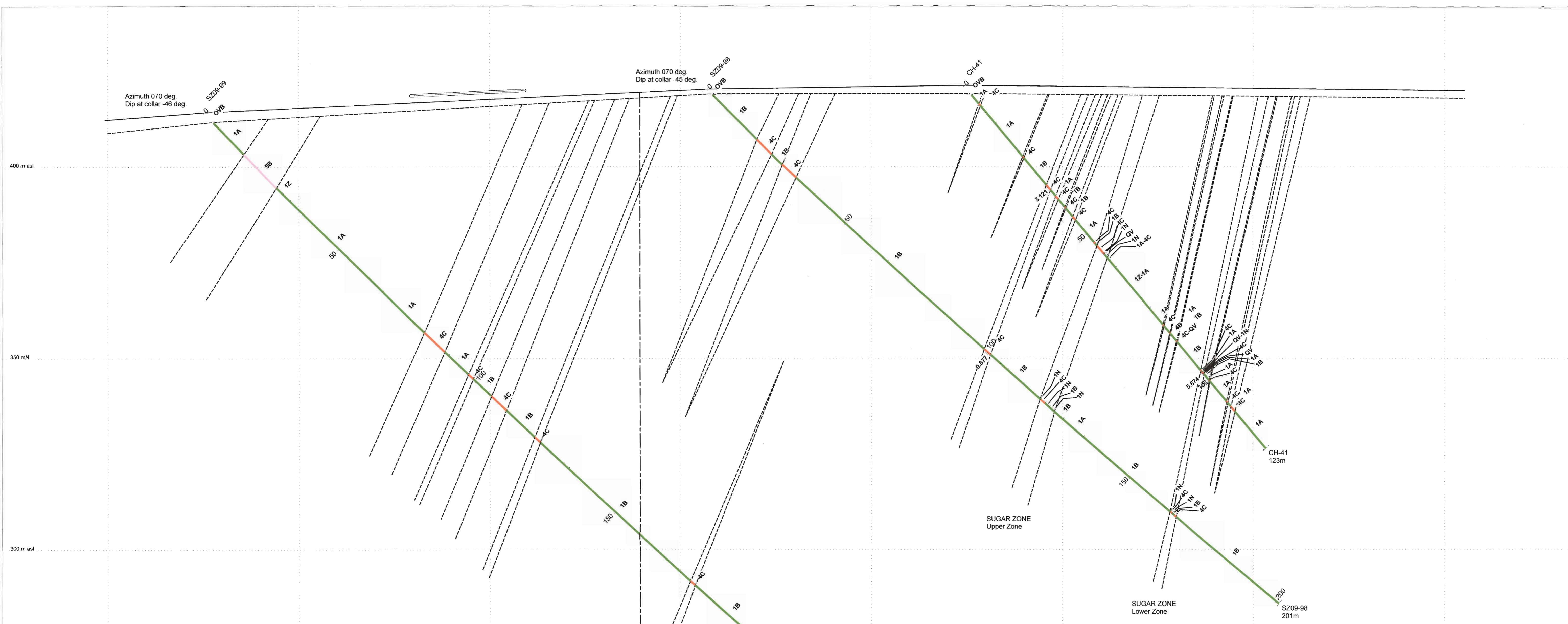
HoleID
 rock_code
 Text
 au_g
 Text
 rock_colour
 Trace Shade
 EOH

SHARPSTONE GEOSERVICES LTD.

**CORONA GOLD CORP.
 SUGAR ZONE PROJECT
 Diamond Drill Section
 SZ09-97
 Facing 325 deg.**

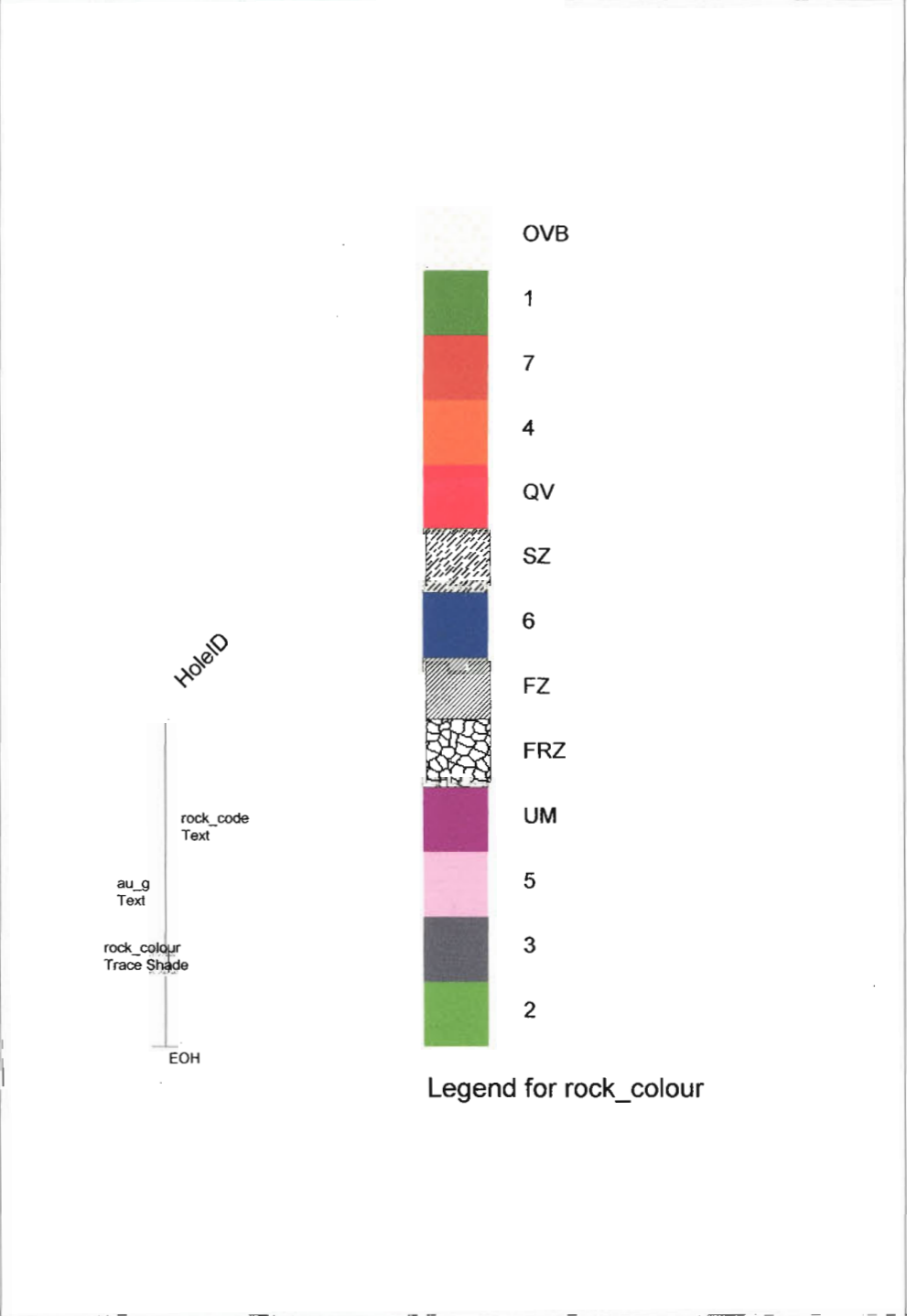
Date: 27/5/2009
 Author: D. S. Hunt
 Office: Thunder Bay
 Drawing: SZ-108
 Scale: 1:500
 Projection: Non-Earth (meters)





LEGEND

OVB OVERBURDEN	-----	Geological Boundary
7 MAFIC DYKES	=====	IP Chargeability Anomaly
7A Diabase	+	Fugro DIGHEM Airborne Anomaly
7B Lamprophyre	▲	Surface sample > 1.00 g/t Au
6 INTERMEDIATE TO MAFIC INTRUSIVES		
6A Diorite		
6B Gabbro		
6D Peridotite		
6E Intermediate dyke		
6F Mafic dyke		
5 FELSIC INTRUSIVES		
5A Granite		
5B Granodiorite		
4 FELSIC PORPHYRYTIC INTRUSIVE ROCKS		
4A Quartz porphyry		
4B Feldspar porphyry		
4C Quartz-feldspar porphyry		
4D Felsite		
4E Pegmatite		
4F Intermediate porphyry		
3 SEDIMENTS		
3B Argillite		
3D Iron formation		
3E Ferruginous chert		
3G Sulphide facies iron formation		
3I Arenite		
2 INTERMEDIATE TO FELSIC VOLCANICS		
2E Intermediate tuff		
1 MAFIC TO ULTRAMAFIC VOLCANICS		
1A Massive flows		
1B Pillowed flows		
1C Agglomerate		
1D Variolitic flows		
1E Amygdaloidal, vesicular flows		
1F Flow-top breccia		
1G Amphibolitic flows		
1H Mafic tuff		
1I Volcaniclastics		
1N Hydrothermally altered basalt		
1U Ultramafic flows		
1Z Gabbroic end-member with gradational contacts		
FLT, FZ Fault, fault zone		
FRZ Fracture zone		
QV, QCV Quartz vein(s), quartz-calcite vein(s)		
SZ Shear zone		
UM Ultramafic		
VG Visible gold		



SHARPSTONE GEOSERVICES LTD.

Date: 28/5/2009
 Author: D. S. Hunt
 Office: Thunder Bay
 Drawing: SZ-109
 Scale: 1:500
 Projection: Non-Earth (meters)

CORONA GOLD CORP.
SUGAR ZONE PROJECT
 Diamond Drill Section
 SZ09-98 and SZ09-99
 Facing 340 deg.

0 7.5 15 30
metres