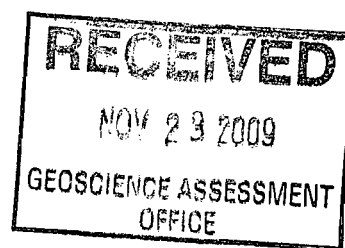


Liberty Mines 2009 Prospecting Program (#2)
Whitney Property

Whitney Township
Porcupine Mining District

On behalf of 2004428 Ontario Inc.

2-43255



Submitted By:
John McKenzie
November 20th 2009

Table of Contents

Page 1	Introduction and Daily Log
Page 2	Daily Log (cont'd), Sample Location Table (Table 1)
Page 3	Property Location Map (fig: 1)
Page 4	Traverse and Sample Location Map (fig: 2)
Page 5	Certificate of Analysis
Page 6	Project Expenditures
Page 7	Statement of Qualification

Introduction

On November 13th and 14th of 2009, Liberty Mines Inc. personnel carried out prospecting work of the Whitney township property on behalf of 2004428 Ontario Inc. The purpose of the work was intended to compliment and expand knowledge of the property gained through previous efforts in the area. The southern area of the claim block was traversed with the intention of identifying areas of outcrop and determining there potential to host gold bearing structures. In total 5 samples where taken from numerous outcrop locations.

Location and Access

The Whitney property is located in the central portion of the Township of Whitney, within the Porcupine mining district. The property consists of 10 contiguous claim units (see fig: 1 for details). Access to the property was gained directly from Highway 101 (see fig 2 for details).

Daily Log

November 13th 2009

8:00 am Arrived on site.

8:15 am First traverse commenced, large area of outcrop identified. Traverse followed general outline of the outcrop. Lithology present consisted almost entirely of intermediate to felsic volcanic rocks, containing weak chlorite alteration. Mineralization (when present) was typically fine grained pyrite, in trace amounts.

10:50 am Sample E365905 taken at south east corner of claim # 1235958, quartz carbonate veinlet, striking at 100 degrees and dipping 85 degrees to the SW. Weakly oxidized, with an approx 1-2% disseminated py.

12:20 pm Sample E365906 taken with same claim number as above (as where all samples). Sample comprised of quartz carbonate tourmaline veining with a strike of 80 degrees and a dip of 80 degrees to the NW. As with all the samples taken lithology consisted of pale green intermediate to felsic volcanics.

1:45 pm continued traverse in an easterly direction, still skirting the edge of the large outcrop area. Numerous quartz carbonate stringers occurring throughout area, insufficient material present to obtain quality sample, no samples taken.

2:40 pm Sample E365907 taken, quartz carbonate chlorite vein containing trace to 1% finely disseminated pyrite. Striking at 30 degrees and dipping 60 degrees to the west.

3:30 pm. Arrived back at starting point of traverse. End of first day.

November 14th 2009

7:30 am Arrived on site, began traverse of western portion of claim # 1235958. Again large outcropping area encountered. Began to traverse in a southwesterly direction in order to circle exposed area.

11:00 am Identified numerous quartz carbonate stringers occurring along flank of outcrop. Due to size and exposure of stringers, no samples of a significant nature could be taken.

1:15pm Sample E365908 taken from a 0.25-0.5m wide quartz-carbonate-tourmaline vein. Strike angle at 85 degrees and a dip of 75 degrees to the SW. Trace to 1% fine grained pyrite identified within veining structure. As in the previous day rock types consisted of pale green intermediate to felsic volcanics (+/- chlorite alteration).

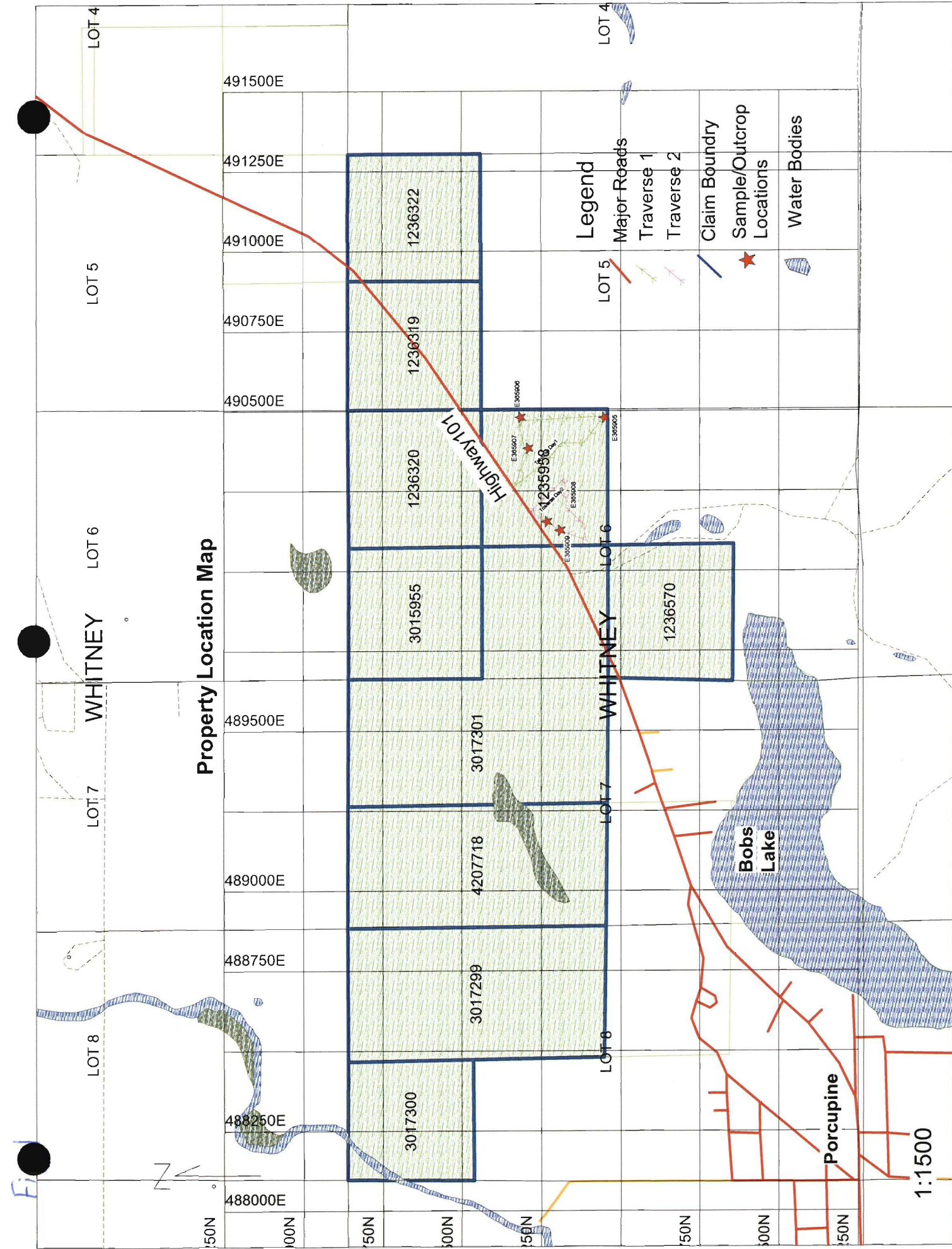
2:35 pm Sample E365909 taken from a quartz-carbonate veinlet. Similar strike and dip to the above sample. No significant amount of sulphide mineralization present. Continued along edge/flank of outcrop, no further areas of significant veining or mineralization noted.

3:00 pm arrived at traverse starting point. End of field work

The following table gives the location and general attitude of the samples taken over the two days of work. All coordinates in UTM Nad83 (zone 17)

Table 1

Sample #	Easting	Northing	Au ppb	strike	dip
E3659505	490485	5372350	<5	100	85SW
E3659506	490480	5372317	20	80	80NW
E3659507	490383	5372293	<5	30	60W
E3659508	490126	5372193	<5	85	75SW
E3659509	490153	5372233	10	85	75Sw



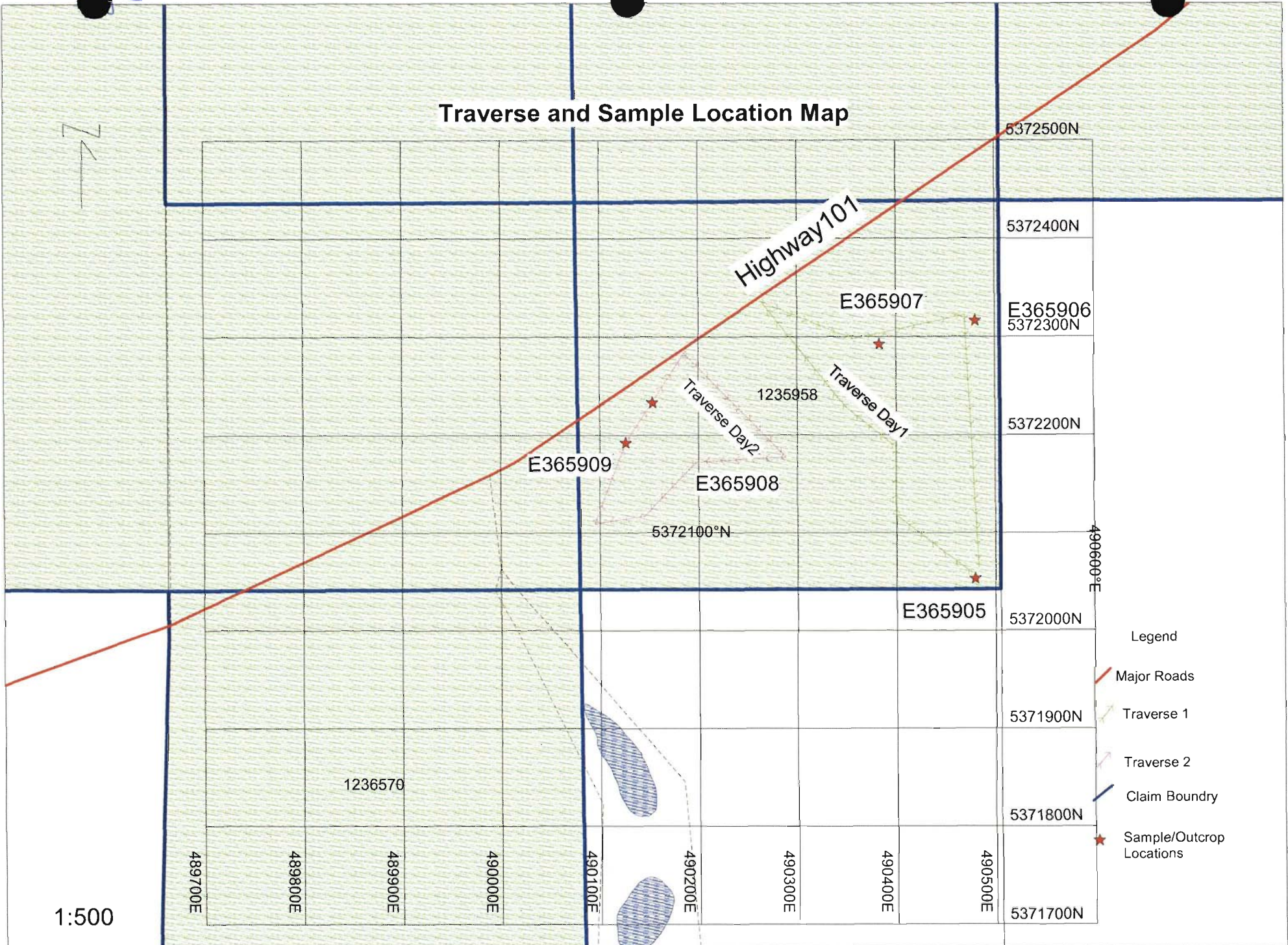
Property Location Map

Legend

- Major Roads
- Traverse 1
- Traverse 2
- Claim Boundary
- Sample/Outcrop Locations
- Water Bodies

1:1500

Traverse and Sample Location Map



2

1:500

4

Certificate of Analysis

Date: Nov 19,2009

Cattarello Assayers Inc.

475 Railway St.

Timmins, On

Phone: 267-4444

Client: John McKenzie

Total # of Samples: 05

Sample ID	FA- Au	FA-Au Rep
	ppb	ppb
E365905	<5	<5
E365906	20	
E365907	<5	
E365908	<5	
E365909	10	

Project Expenditures

Geologist @ \$375/day for 3.5 days (including report)	\$1312.5
Assistant at \$208 for 2 days	\$416
Fuel Costs	\$20
Analysis Costs	\$131.25
Total expenditures	\$1880.00

November 20th 2009

Statement of Qualifications


- I (John McKenzie) currently reside at 313 Vimy Ave. Timmins On. P4N 4H3
- This report is based on field observations by myself and Rene Daigle, of 1115 MaClean Dr. Unit 21 Timmins On. P4P 6H1.
- I have been working for the past 13 years in various geological disciplines.
- I have no interest either directly or indirectly nor do I expect to receive any in the future in regards to the Whitney Property.
- I am a graduate of Cambrian College's Geological Technician Program
- I am currently within the employ of Liberty Mines Inc.

November 20, 2009



John McKenzie
Exploration Manager

November 20, 2009



Rene Daigle
Geological Assistant