

**REPORT ON PROSPECTING, TRENCHING CHANNEL SAMPLING AND
GEOLOGICAL MAPPING SURVEY**

FOR

AMADOR GOLD CORPATION

CLAIM NO. 4201784

SEWELL PROJECT

**SEWELL TOWNSHIP
PORCUPINE MINING DIVISION,
NORTHEASTERN ONTARIO**



December 15, 2007

Charles Hartley, P. Geo.

SUMMARY

The Sewell Property is comprised of a series of contiguous 12 unpatented mining claims containing 86 claim units covering an area of approximately 3440 hectares and is located about 65 km southwest of Timmins, Ontario. The claims are held by Amador Gold Corp 711 – 675 West Hastings Street, Vancouver, British Columbia.

This report describes a prospecting, trenching, channel sampling and geological mapping program completed on claim 4201784 in Sewell Township during the period June to September 2008.

The claims area is underlain by late Archean felsic intrusive, a biotite hornblende granodiorite and xenolithic granodiorite to the south of highway 101 and north of highway 101. Mafic volcanic and ultramafic intrusive rocks are noted mainly north of highway 101 while ultramafic rocks were observed in the trench area.

Prospecting during June and July 2008 returned highly anomalous copper, nickel, platinum and palladium from many of the 22 grab samples collected. Copper values returned up to 0.77% Cu with many values in the 0.05% to 0.25% Cu, nickel values returned up to 1.11% Ni with many values in the 0.2 to 0.5% Ni. Pt and Pd values were often anomalous with values in the range between 0.4 g/t to 1.67 g/t Pt Pd with a maximum value of 3.44 g/t combined Pt Pd.

Outcrop stripping and washing were completed in late July and early August while mapping and channel were completed in mid August to early September. A total of 14 channels were sampled and 115 samples were collected and analysed for Au, Pt, Pd, Ag, Cu, Ni, Zn, Pb, Co and %Ni when samples contained greater than 5000 ppm Ni.

The results confirmed the strongly anomalous values for nickel and platinum and palladium with values up to 0.88% Ni with many values in the 0.2 to 0.5% range. The higher Ni values also occur with weakly anomalous copper values were in the order of 100 ppm to rare samples above 1000 ppm copper. Anomalous values for Pt and Pd often occurred with the higher Ni values and ranged from 150 ppb to 1174 ppb combined Pt Pd. Gold values are considered background with values ranging from <5 to 45 ppb.

The anomalous values were observed to be wide spread occurring in samples from channels 3 to 12 and occur in mineralized peridotites containing pyrrhotite with pentlandite and chalcopyrite locally associated with weak to moderate shearing or near contacts.

Future exploration is warranted to further examine the potential for nickel-copper mineralization as well as the potential for platinum and palladium. Also the potential for gold mineralization exists within well developed shear zones within the granodiorites in southern part of the property.

TABLE OF CONTENTS

	Page No.
Summary	
Introduction	1
Location and Access	1
Regional Geology	3
Property Geology	4
Previous work	5
Discussion and Scope of Work	5
Results of Prospecting and Sampling	7
Conclusions and Recommendations	8
Bibliography	9
Certificate of Qualifications	10
Appendix A Certificate of Expenditures	11
Appendix B Claims list	12

TABLES

Table 1	Sewell Project Log	7
Table 2	Sewell Project Log Expenses	11

Figures

Figure 1	Sewell property location map	2
Figure 2	Sewell Claim Map	3

INTRODUCTION

The Sewell Property is comprised of a series of contiguous 12 unpatented mining claims containing 86 claim units covering an area of approximately 3440 hectares. The claims are held option by Amador Gold Corp 711 – 675 West Hastings Street, Vancouver, British Columbia.

This report describes the results of a prospecting, trenching, sampling and geological mapping on the Sewell Property. The work was completed on claim 4201784 in Sewell Township during the period June 24 to September 5, 2008.

PROPERTY LOCATION AND ACCESS

The Sewell Property, held by Amador Gold Corp is located approximately 65 kilometres southwest of Timmins, Ontario (Figure 1). It is comprised a series of 12 unpatented mining claims containing 84 claim units and covers an area of approximately 3440 hectares of in Sewell Township.

The property is readily accessed by motor vehicle from Highway 101 West. The property extends both north and south of highway 101. Gravel roads leading north and south cross through the property and a series of ATV and 4x4 truck trails off the gravel roads give further access to the property.



Figure 1 Sewell Property location map

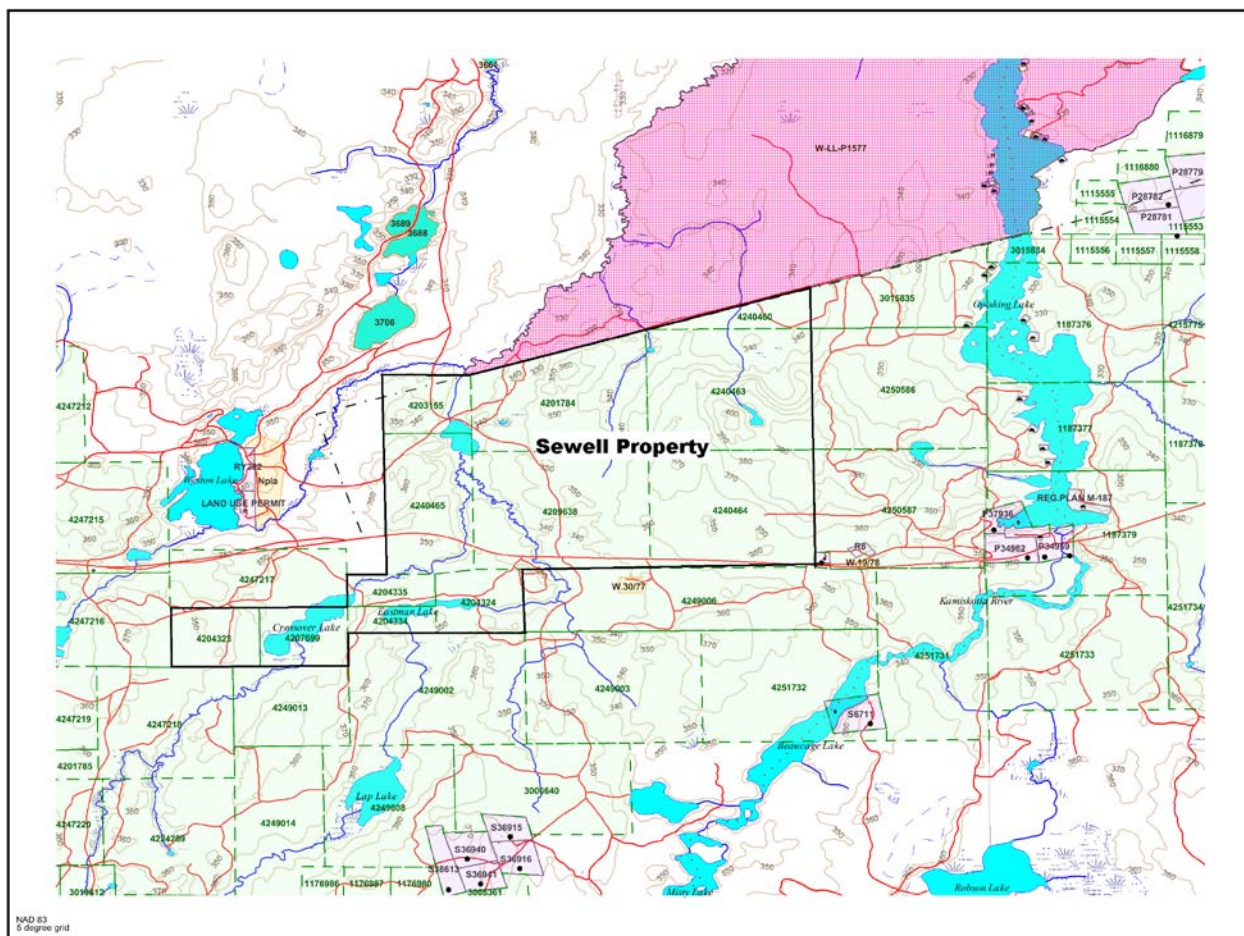


Figure 2 Sewell Claim Map

REGIONAL GEOLOGY

The property lies within the Superior Province of Archean basement rocks, in the Eastern Canadian Shield. It is situated in the northeast part of the Swayze Greenstone belt a possible western extension of the Abitibi Greenstone belt.

The region is predominantly underlain by southwest trending metamorphosed (greenschist) volcanics of the Muskego-Reeves Assemblage ranging from ultramafic to felsic in composition. The mafic volcanics are pillowed to massive andesitic or basaltic flows. They are the dominant rock type in the area. Ultramafic volcanic flow units and/or intrusive sills trending east-west occurs in the central portion of the property and are intercalated with the mafic volcanics.

The east central portion of the region is underlain by felsic volcanics of the Hanrahan Lake Complex that extend west from Kenogaming Township. The felsic volcanics are

comprised of tuffs, lapilli tuffs, agglomerates and intermediate to felsic flows. They form the core of a major northwest plunging antiform fold. A fairly continuous iron formation known as the Nat River iron formation marks the boundary between the felsic volcanics and the mafic volcanics.

In the northwest metasediments occur. These consist of greywackes and conglomerates. The north centre part of the property is underlain by north-south trending ultramafic, mafic and felsic porphyry intrusive units that may be part of a layered complex. These intrusive units are interpreted to be sliced up by a series of northeast trending faults. In the southwest the Kukatush Stock (Biotite hornblende granodiorite) intrudes the volcanics and in the southeast the Kenogamissi Batholith (hornblende and/or biotite bearing granodiorite to tonalite gneiss). Smaller quartz-feldspar and feldspar porphyry intrusive bodies also occur on the property. All the rock types are intruded by Proterozoic north to north-northwest trending diabase dykes.

Three major faults cross cut the property, the east-west trending Destor-Porcupine, the east-west trending Jehann Lake Fault and the southwest trending Hardiman Bay Fault.

PROPERTY GEOLOGY

The property lies within the Superior Province of Archean basement rocks, in the Eastern Canadian Shield. It is situated in the northeast part of the Swayze Greenstone belt a possible western extension of the Abitibi Greenstone belt.

The claims area is underlain by late Archean felsic intrusive, a biotite hornblende granodiorite and xenolithic granodiorite to the south of highway 101 and north of highway 101 mafic volcanic and ultramafic intrusive while dominantly ultramafic rocks were observed in the trench area.

These felsic intrusives have been well described by *Milne (1972)* as “coarse grained sericitized plagioclase feldspar ... with biotite and pale hornblende and interstitial quartz. The granodiorite contains a great many xenoliths of country rock.”

The meta-mafic volcanic are essentially dark green basaltic flows and tuffs with epidote common.

Ultra mafic rocks observed consist of graphitic serpentized peridotites are dark green to black and locally dark green medium to coarse grained pyroxenites.

Contact metamorphic effects the mafic volcanics with hornblende gneiss proximal to the granodiorite.

PREVIOUS WORK

The extent of any previous work in the immediate area other than early work from the Geological Survey of Ontario appears to be limited. The first reported work was magnetic and electromagnetic surveys followed by diamond drilling by McIntyre Mines Ltd in 1975. The drilling intersected peridotite but no significant copper nickel values.

The claims were acquired by Cross Lake Minerals Ltd in 1995 and completed geological mapping, geophysical surveys including magnetic, VLF-EM, horizontal loop EM and Induced Polarization followed by diamond drilling in 1998. The results of the drilling included 0.53% nickel over 4.45m and 0.62% nickel over 0.75m and 1.57 g/t Pt Pd over 0.87m.

The most recent work was by Amador Gold Corp who performed ground geophysical surveys including magnetic, VLF-EM and induced polarization over an earlier reported nickel occurrence. Down hole electromagnetic geophysical surveys were also completed by Quantec Geoscience for Amador Gold on the earlier drill holes by Cross Lake Minerals. These surveys have been reported in a previous assessment filing.

Other areas within Sewell Township have a long history of exploration and are beyond the scope of this report. The one notable exception is the south western part of Sewell Twp with an occurrence of mineralization in quartz carbonate veining in sheared and carbonatized mafic volcanic. Associated mineralization includes pyrite, tourmaline, and minor chalcopyrite. Work here in 1987 by Glen Auden Resources has included geophysics, stripping, trenching and diamond drilling.

DISCUSSION and SCOPE of WORK

During June 24 and September 5, 2008 a prospecting and an outcrop stripping and sampling program was completed on parts of the Sewell property where peridotites occur. Prospecting grab samples returned values with high nickel and PT and Pd values. To follow up these high grab samples an outcrop stripping, trenching, channel sampling and geological mapping program was completed during July to September 2008.

Report and map preparation were completed during December 2009 as time permitted.

Prospecting, outcrop stripping and washing were supervised by G Ross with assistance from P Collins. The outcrop stripping was contracted to 1452847 Ontario Inc of Timmins. Sampling and geological mapping were completed by G Sparling, S Beauchamp with assistance from D Dymtrow and D Sebesta for the channel sampling. The geological assessment report was prepared by C Hartley while G Sparling completed the map preparation and plotting with assistance from S Beauchamp. Project geologist C Hartley was responsible for project supervision. All personnel are residents of Timmins Ontario.

Results of Prospecting and Sampling

Prospecting during June and July 2008 returned highly anomalous copper, nickel, platinum and palladium from many of the 22 grab samples collected. All prospecting samples were analysed for copper, nickel, platinum and palladium. Copper values returned up to 0.77% Cu with many values in the 0.05% to 0.25% Cu, nickel values returned up to 1.11% Ni with many values in the 0.2 to 0.5% Ni. Pt and Pd values were often anomalous with values in the range between 0.4 g/t to 1.67 g/t Pt Pd with a maximum value of 3.44 g/t combined Pt Pd. With these encouraging results an outcrop trenching and channel sampling program was completed between July and September 2008.

Outcrop stripping and washing was completed in late July and early August while mapping and channel were completed in mid August to early September. A total of 14 channels were sampled and 115 samples were collected with 6 blank and standard inserted for quality control. The sample length was 0.5 m for all samples. All trench samples were analysed for Au, Pt, Pd, Ag, Cu, Ni, Zn, Pb, Co and %Ni when samples contained greater than 5000 ppm Ni.

The results confirmed the strongly anomalous values for nickel and platinum and palladium with values up to 0.88% Ni with many values in the 0.2 to 0.5% range. The higher Ni values also occur with weakly anomalous copper values were in the order of 100 ppm to rare samples above 1000 ppm copper. Anomalous values for Pt and Pd often occurred with the higher Ni values and ranged from 150 ppb to 1174 ppb combined Pt Pd. Gold values are considered background with values ranging from <5 to 45 ppb.

The anomalous values were observed to be wide spread occurring in samples from channels 3 to 12 and occur in mineralized peridotites containing pyrrhotite with pentlandite and chalcopyrite locally associated with weak to moderate shearing or near contacts with the over lying gneisses.

Table 1: Sewell Project Log

Date	Claim No.	Work Completed
July 23 to Aug 08, 2008	4201784	Excavation 13 days
June 24 to July 21, 2008	4201784	Prospecting 8 days
July 23 to August 8, 2008	4201784	Supervision excavation etc 13 days
July 13 to Aug 31, 2008	4201784	Washing and sampling 12 days
August 16 to 31, 2008	4201784	Geologist & assist mapping 6 days
August 2 to 26, 2008	4201784	Geology \ supervision 4 days
August 6 to Sept 5, 2008	4201784	Washing and sampling 8 days
August 25 to Sept 5, 2008	4201784	Channel sampling 4 days
August 2008	4201784	22 assays CU, Ni, PT, Pd
August\September 2008	4201784	121 Trench sample analyses Au Pt Pd Ag Cu Ni Zn Pb Co
December 2009	4201784	Report writing and preparation
December 2009	4201784	Map preparation

CONCLUSION AND RECOMMENDATIONS

The Sewell Property, owned by Amador Gold Corp is located approximately 65 kilometres southwest of Timmins, Ontario (Figure 1). It is comprised a series of 12 unpatented mining claims containing 84 claim units and covers an area of approximately 3440 hectares of in Sewell Township.

The claims area is underlain by late Archean felsic intrusive, a biotite hornblende granodiorite and xenolithic granodiorite to the south of highway 101 and north of highway 101 mafic volcanic and ultramafic intrusive rocks are noted while dominantly ultramafic rocks were observed in the trench area.

Prospecting during June and July 2008 returned highly anomalous copper, nickel, platinum and palladium from many of the 22 grab samples collected. Copper values returned up to 0.77% Cu with many values in the 0.05% to 0.25% Cu, nickel values returned up to 1.11% Ni with many values in the 0.2 to 0.5% Ni. Pt and Pd values were often anomalous with values in the range between 0.4 g/t to 1.67 g/t Pt Pd with a maximum value of 3.44 g/t combined Pt Pd.

Outcrop stripping and washing were completed in late July and early August while mapping and channel were completed in mid August to early September. A total of 14 channels were sampled and 115 samples were collected and analysed for Au, Pt, Pd, Ag, Cu, Ni, Zn, Pb, Co and %Ni when samples contained greater than 5000 ppm Ni.

The results confirmed the strongly anomalous values for nickel and platinum and palladium with values up to 0.88% Ni with many values in the 0.2 to 0.5% range. The higher Ni values also occur with weakly anomalous copper values were in the order of 100 ppm to rare samples above 1000 ppm copper. Anomalous values for Pt and Pd often occurred with the higher Ni values and ranged from 150 ppb to 1174 ppb combined Pt Pd. Gold values are considered background with values ranging from <5 to 45 ppb.

The anomalous values were observed to be wide spread occurring in samples from channels 3 to 12 and occur in mineralized peridotites containing pyrrhotite with pentlandite and chalcopyrite locally associated with weak to moderate shearing or near contacts.

Future exploration is warranted to further examine the potential for nickel-copper mineralization as well as the potential for platinum and palladium. Also the potential for gold mineralization exists within well developed shear zones within the granodiorites in southern part of the property.

Expenditures for the channel sampling program on the property totalled \$38 845.00 (see Table 2 Expense log).

BIBLIOGRAPHY

- Ayer, J. A. 1995. Precambrian geology, northern Sywayze greenstone belt; Ontario Geological Survey, Report 297, 57p.
- Breaks, F. 1978: Geology of the Horwood Lake Area, District of Sudbury; Ontario Geological Survey Report 169, 67p. Accompanied by Map 2329, scale 1:31,680 (1 inch to ½ mile)
- Milne, V. G. 1972. Geology of the Kutatush – Sewell Lake area, District of Sudbury; Ontario Division of Mines, GR97, 116p. Accompanied by maps 2230, 2231, scale 1 inch to ½ mile.
- Assessment reports Cross Lake Minerals 1996 and 1998 and other unpublished assessment reports from Ministry of Northern Development, Mines and Forestry of Ontario

CERTIFICATE OF QUALIFICATIONS

I, Charles Hartley, of the City of Timmins, Province of Ontario, do hereby certify that:

- (1) I am a professional consulting geologist, residing in Timmins Ontario.
- (2) I hold a B.Sc. degree in Geological Sciences (1977) from St. Francis Xavier University, Antigonish, Nova Scotia and a B.Sc. Degree (1994) in Technology in Environmental Studies from University College of Cape Breton, Sydney, Nova Scotia.
- (3) I am a registered professional geoscientist with the Association of Professional Geoscientists of Ontario, a member of the Canadian Institute of Mining and Metallurgy of Canada and the Prospectors and Developers Association of Canada.
- (4) This report is based field supervision, observations and examination of geological reports and maps and assessment reports of Sewell Township and Northern Swayze Greenstone Belt.
- (5) I have no personal interest in the property covered by this report, either direct or indirect.
- (6) Permission is granted for the use of this report, in whole or in part, for assessment and qualification requirements but not for advertising purposes.

Dated at Timmins, Ontario
December 15, 2009

Charles Hartley P. Geo .B Sc.

APPENDIX A CERTIFICATE OF EXPENDITURES

**AMADOR GOLD CORPORATION
711 – 675 WEST HASTINGS ST
VANCOUVER, BRITISH COLUMBIA**

Table 2: Sewell Project Expenses

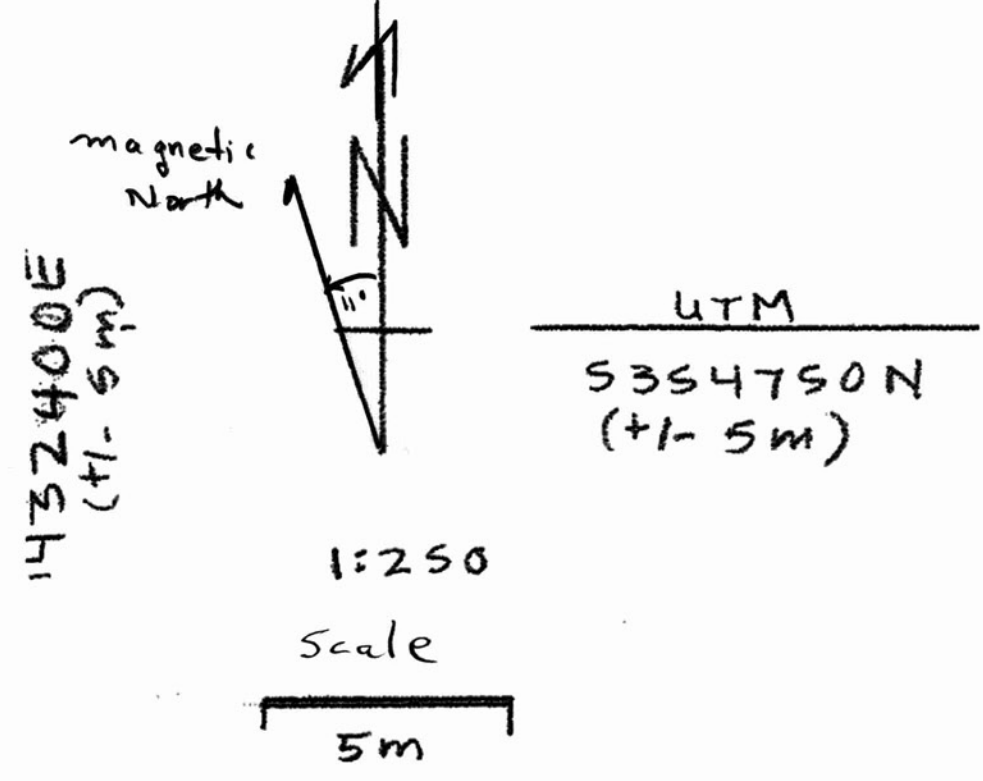
Date	Claim No.	Work Completed	costs
July 23 to Aug 08, 2008	4201784	Excavation 13 days as invoiced	\$10 462.00
June 24 to July 21, 2008	4201784	Prospecting 8 days	\$350*8= \$2800.00
July 23 to August 8, 2008	4201784	Supervision excavation etc 13 days	\$350*13= \$4550.00
July 13 to Aug 31, 2008	4201784	Washing and sampling 12 days	\$300*12=\$3600.00
August 16 to 31, 2008	4201784	Geologist & assist mapping 6 days	\$525*6=\$3150.00
August 2 to 26, 2008	4201784	Geology \ supervision 4 days	\$630*4=\$2520.00
August 6 to Sept 5, 2008	4201784	Washing and channel sampling 8 days	\$225*8=\$1800.00
August 25 to Sept 5, 2008	4201784	Channel sampling 4 days	\$200*4=\$800.00
August 2008	4201784	22 assays CU, Ni, PT, Pd	\$34.65*22= \$762.30
August\September	4201784	121 Trench sample analyses Au Pt Pd Ag Cu Ni Zn Pb Co	\$18.25*121=\$2208.25
July\ August 2009	4201784	Truck 32 days	\$100*32=\$3200.00
December 2009	4201784	Report writing and preparation	\$630*3=\$1890.00
December 2009	4201784	Map preparation	\$367.50*3=\$1102.50
December 2009	4201784	total	\$38 845.00

Claim Number	Due Date	Date Recorded	Work Required	Township	Claim Units
4203155	28-Dec-09	28-Dec-05	\$1,600	Sewell	4
4201784	28-Dec-09	28-Dec-05	\$5,112	Sewell	14
4209638	13-Feb-10	13-Feb-06	\$6,400	Sewell	16
4240465	12-Sep-10	12-Sep-08	\$4,000	Sewell	10
4240464	12-Sep-10	12-Sep-08	\$6,400	Sewell	16
4240463	12-Sep-10	12-Sep-08	\$6,400	Sewell	16
4240460	12-Sep-10	12-Sep-08	\$1,200	Sewell	3
4204324	7-Nov-10	7-Nov-06	\$1,600	Sewell	4
4204323	7-Nov-10	7-Nov-06	\$1,600	Sewell	4
4207699	22-Nov-10	22-Nov-05	\$1,600	Sewell	4
4204335	22-Nov-10	22-Nov-06	\$800	Sewell	2
4204334	22-Nov-12	22-Nov-06	\$800	Sewell	2
Totals			\$37,512		95

Channel #	Sample #'s	From	To	Sample Length	Au (ppb)	Pt (ppb)	Pd (ppb)	Ag (ppm)	Cu (ppm)	Ni (ppm)	Zn (ppm)	Pb (ppm)	Co (ppm)
12	100970	0.0	0.0	8	222	7	830	786	33	7	35		
12	100971	1.0	1.0	15	37	97	0.3	387	848	38	21	46	
12	100972	1.50	1.50	36	85	90	0.5	353	1479	222	248	65	
12	100973	1.50	2.00	51	32	91	<0.2	442	1803	31	18	78	
12	100974	2.00	2.50	14	18	33	0.2	249	1374	19	14	68	
12	100975	2.50	2.50	13	74	79	0.9	1815	19900	88	48	398	
12	100976	2.50	3.00	11	17	52	0.9	382	1641	27	10	66	
12	100977	3.00	3.50	5	-5	-5	<0.2	33	180	44	11	16	
12	100978	4.00	4.00	0.0	-5	14	60	0.2	187	932	37	13	48
12	100979	4.00	4.50	7	137	127	<0.2	119	771	20	9	41	
12	100980	4.50	5.00	12	40	127	0.2	455	1810	31	8	72	
12	100981	5.00	5.50	6	75	201	<0.2	252	2910	23	8	85	
12	100982	4.00	6.00	2.00	6	18	59	<0.2	76	1783	24	10	76
12	100983	6.00	6.50	13	8	10	0.2	58	1148	19	10	56	
12	100984	6.50	7.00	13	74	178	0.2	614	4040	20	10	112	
12	100985	7.00	7.50	6	37	196	0.2	347	1948	26	10	86	
12	100986	4.00	8.00	4.00	-5	5	13	<0.2	58	120	25	5	11
12	100987	8.00	8.50	0.50	-5	5	154	<0.2	245	443	28	8	22
12	100988	8.50	9.00	0.50	-5	5	-5	<0.2	84	360	27	6	21
13	100989	0.0	0.0	0.0	-5	-5	-5	<0.2	26	84	28	7	13
13	100990	0.50	1.00	0.50	-5	-5	-5	<0.2	71	69	68	8	27
13	100991	1.00	1.50	0.50	-5	-5	-5	<0.2	152	49	57	6	21
13	100992	1.50	2.00	0.50	-5	-5	-5	<0.2	441	99	92	8	55
13	100993	2.00	2.50	0.50	-5	-5	-5	<0.2	194	72	65	6	33
13	100994	2.50	3.00	0.50	9	-5	-5	<0.2	231	57	58	7	21
13	100995	3.00	3.50	0.50	-5	5	-5	<0.2	251	145	50	10	26
13	100996	3.50	4.00	0.50	-5	11	7	<0.2	38	294	57	10	29
13	100997	4.00	4.50	0.50	-5	9	-5	0.5	20	218	48	16	21
13	100998	4.50	5.00	0.50	-5	-5	-5	<0.2	14	67	31	7	14
13	100999	5.00	5.50	0.50	-5	-5	-5	0.3	309	57	32	7	21
13	101000	5.50	5.50	0.00	-5	-5	-5	<0.2	80	15	13	4	12
14	100114	0.00	0.50	0.50	-5	-5	-5	<0.2	34	53	39	10	15
14	100115	0.50	1.00	0.50	-5	-5	-5	<0.2	39	129	41	21	25
14	100116	1.00	1.50	0.50	-5	-5	-5	<0.2	17	76	17	11	9
14	100117	1.50	2.00	0.50	-5	5	-5	<0.2	12	37	9	14	4
14	100118	2.00	2.50	0.50	-5	5	-5	<0.2	28	21	12	12	2
14	100119	2.50	3.00	0.50	-5	6	-5	<0.2	9	27	10	8	3
14	100120	3.00	3.50	0.50	-5	-5	-5	<0.2	11	9	5	10	2
14	100121	3.50	4.00	0.50	-5	-5	-5	<0.2	114	58	71	15	19
14	100122	4.00	4.50	0.50	-5	-5	-5	<0.2	103	68	33	12	20
14	100123	4.50	5.00	0.50	-5	-5	-5	<0.2	15	27	10	7	4
14	100124	5.00	5.50	0.50	-5	-5	-5	<0.2	16	32	10	7	3
14	100125	5.50	5.50	0.00	14	75	77	0.9	1796	19800	83	46	383
14	100126	5.50	6.00	0.50	-5	13	22	<0.2	61	117	17	12	29

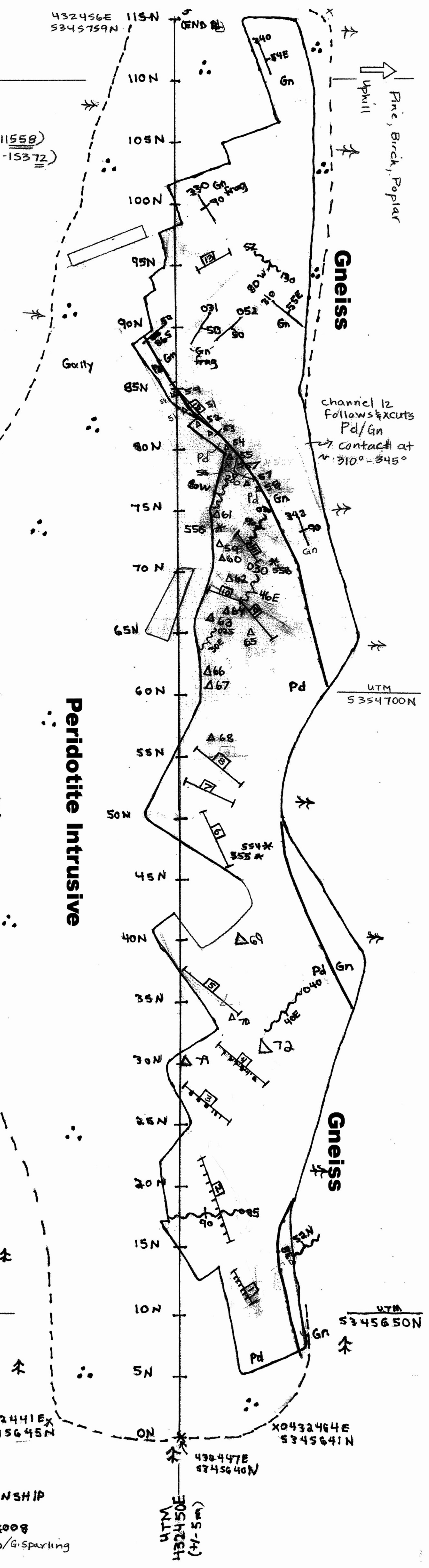
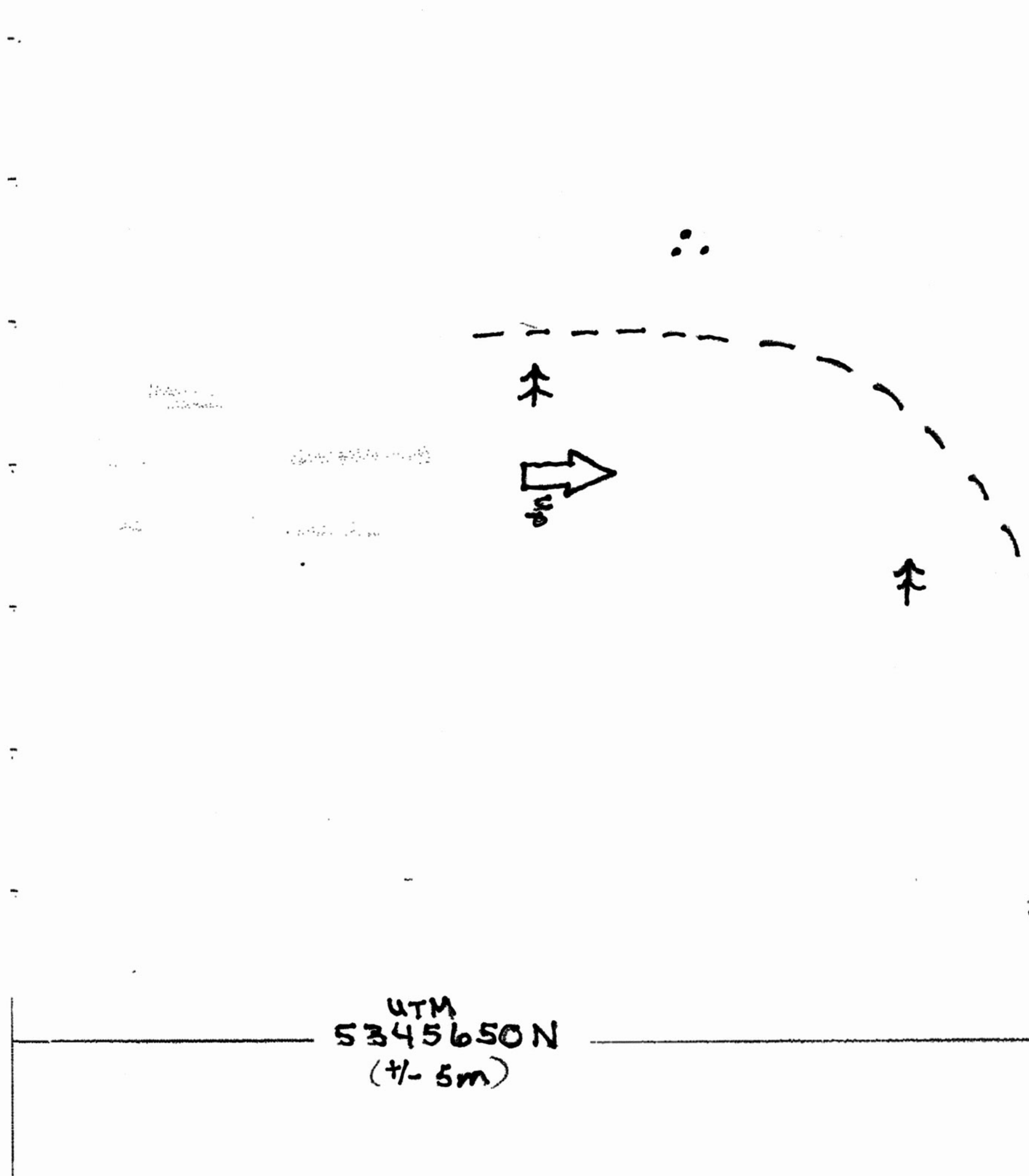
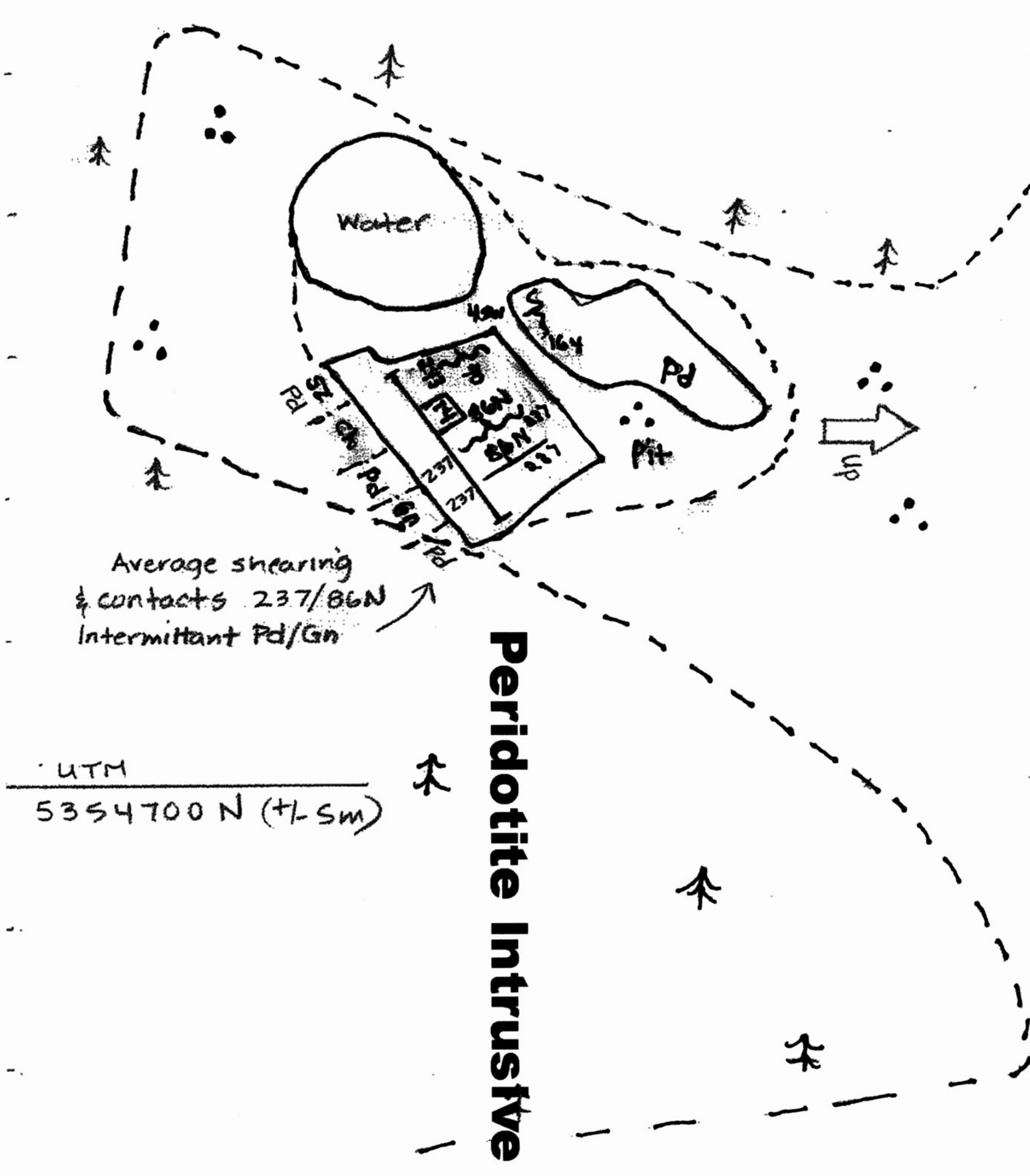
Channel #	Sample #'s	From	To	Sample Length	Au (ppb)	Pt (ppb)	Pd (ppb)	Ag (ppm)	Cu (ppm)	Ni (ppm)	Zn (ppm)	Pb (ppm)	Co (ppm)
1	121451	0.00	0.00	0.00	<5	<5	<5	<0.2	89	14	22	30	13
1	121452	0.00	0.50	0.50	-5	-5	-5	<0.2	41	38	28	7	15
1	121453	0.50	1.00	0.50	-5	-5	-5	<0.2	185	44	29	7	18
1	121454	1.00	1.50	0.50	-5	-5	-5	<0.2	112	42	22	7	16
1	121455	1.50	2.00	0.50	-5	-5	-5	<0.2	111	46	39	10	20
1	121456	2.00	2.50	0.50	-5	-5	-5	<0.2	52	38	27	7	14
1	121457	2.50	3.00	0.50	-5	-5	-5	<0.2	21	68	23	7	15
1	121458	3.00	3.50	0.50	-5	-5	-5	<0.2	42	64	19	6	11
2	100801	0.00	0.50	0.50	-5	-5	-5	<0.2	14	44	23	6	7
2	100802	0.50	1.00	0.50	-5	-5	-5	<0.2	25	386	61	12	36
2	100803	1.00	1.50	0.50	-5	5	-5	<0.2	26	333	65	12	34
2	100804	1.50	2.00	0.50	-5	8	5	-0.2	18	171	35	10	22
2	100805	2.00	2.50	0.50	-5	-5	5	-0.2	31	367	48	12	38
2	100806	2.50	3.00	0.50	-5	8	-5	-0.2	26	162	27	8	18
2	100807	3.00	3.50	0.50	-5	8	5	-0.2	28	111	16	5	11
2	100808	3.50	4.00	0.50	-5	11	31	-0.2	66	366	42	10	30
2	100810	4.50	5.00	0.50	-5	9	18	-0.2	40	309	40	11	30
2	100811	5.00	5.50	0.50	5	19	75	-0.2	143	662	38	10	28
3	100812	0.00	0.50	0.50	<5	153	428	0.2	511	772	38	21	38
3	100813	0.50	1.00	0.50	23	116	558	0.3	785	729	58	25	35
3	100814	1.00	1.50	0.50	13	42	138	0.2	569	390	47	18	18
3	100815	1.50	2.00	0.50	-5	25	34	-0.2	65	310	29	23	21
4	100816	0.00	0.50	0.50	<5	135	132	<0.2	244	2053	52	33	56
4	100817	0.50	1.00	0.50	10	83	266	-0.2	368	3735	39	41	100
4	100818	1.00	1.50	0.50	-5	35	114	-0.2	122	1809	78	44	98
4	100819	1.50	2.00	0.50	18	123	508	-0.2	457	5480	97	127	152
4	100820	2.00	2.50	0.50	6	429	493	-0.2	513	3150	63	14	84
4	100821	2.50	3.00	0.50	9	48	142	-0.2	423	778	58	12	39
4	100822	3.00	3.50	0.50	-5	-5	-5	<0.2	37	155	31	7	14
5	100823	0.00	0.50	0.50	7	95	481	0.2	1353	3910	63	130	115
5	100824	0.50	1.00	0.50	15	140	537	-0.2	736	5630	230	498	136
5	100825	1.00	1.00	0.00	14	74	78	0.3	1887	19400	82	48	405
5	100826	1.00	1.50	0.50	6	148	1026	0.3	912	2085	153	97	87
5	100827	1.50	2.00	0.50	-5	147	433	-0.2	753	3760	78	46	113
5	100828	2.00	2.50	0.50	10	205	407	-0.2	567	4610	74	62	128
5	100829	2.50	3.00	0.50	9	60	139	-0.2	263	1844	25	16	64
5	100830	3.00	3.50	0.50	-5	36	48	-0.2	154	562	20	21	37
5	100831	3.50	4.00	0.50	-5	29	81	-0.2	103	773	31	32	42
6	100832	0.00	0.50	0.50	<5	-5	-5	<0.2	353	322	51	9	15
6	100833	0.50	1.00	0.50	-5	104	69	-0.2	371	436	50	9	25
6	100834	1.00	1.50	0.50	16	165	450	0.2	380	5170	31	10	129
6	100835	1.50	2.00	0.50	17	110	258	0.3	1564	8780	43	10	242
6	100836	2.00	2.50	0.50	8	54	176	-0.2	252	2690	40	7	76

Channel #	Sample #'s	From	To	Sample Length	Au (ppb)	Pt (ppb)	Pd (ppb)	Ag (ppm)	Cu (ppm)	Ni (ppm)	Zn (ppm)	Pb (ppm)	Co (ppm)
7	100837	0.00	0.50	0.50	-5	14	33	<0.2	156	835	21	7	43
7	100838	0.50	1.00	0.50	-5	28	66	<0.2	178	810	26	6	34
7	100840	1.50	2.00	0.50	92	47	92	<0.2	309	385	24	7	26
8	100841	0.00	0.50	0.50	8	9	12	<0.2	76	489	22	9	38
8	100842	0.50	1.00	0.50	-5	14	15	<0.2	231	652	34	11	51
8	100843	1.00	1.50	0.50	10	48	52	<0.2	147	582	27	9	41
8	100844	1.50	2.00	0.50	-5	23	109	<0.2	167	426	21	8	22
8	100845	2.00	2.50	0.50	5	218	277	-0.2	309	584	19	8	22
8	100846	0.00	3.00	3.00	6	149	1032	0.3	636	473	14	9	24
8	100847	3.00	3.50	0.50	6	13	28	<0.2	36	117	29	7	22
9	100848	0.00	0.50	0.50	6	39	93	0.2	185	928	63	11	65
9	100849	0.50	1.00	0.50	-5	10	12	<0.2	43	400	26	7	30
9	100850	1.00	1.00	0.00	-5	-5	-5	<0.2	88	42	23	26	13
9	100951	1.00	1.50	0.50	-5	27	159	<0.2	49	1040	23	8	47
9	100952	1.50	2.00	0.50	10	495	1096	0.2	52	4970	31	12	128
9	100953	2.00	2.50	0.50	5	136	166	-0.2	123	1395	18	12	71
9	100954	2.50	3.00	0.50	5	132	99	-0.2	102				



Sewell Township
Claim No. 4201784

- ⊙ overburden trees
- contact
- |- foliation, bedding
- ~> shearing
- ▬ jointing
- * grab sample (11554-11558)
- Δ grab sample (15351-15372)
- ▭ channel sample
- Gn Gneiss
- Pd Peridotite
- ser Sericite Schist
- frag fragmental
- ch chert



SEWELL TOWNSHIP
September 2008
S. Beavchamp/G. Spurling

432400E (+/- 5m)

UTM
705472E (+/- 5m)



Established 1928

Swastika Laboratories Ltd

Assaying - Consulting - Representation

Assay Certificate

8W-2364-RA1

Company: **AMADOR GOLD CORPORATION**

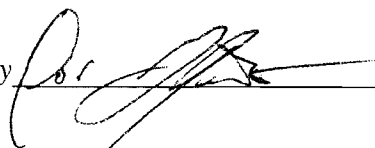
Date: AUG-15-08

Project: **SEWELL**

Attn: **C. HARTLEY**

We hereby certify the following Assay of 22 ROCK samples submitted AUG-12-08 by .

Sample Number	Cu %	Ni %	Pt g/tonne	Pd g/tonne
15351	0.091	0.54	0.04	0.33
15352	0.035	0.436	0.04	0.30
15353	0.057	0.58	0.11	0.35
15354	0.052	0.489	0.09	0.32
15355	0.020	0.251	0.05	0.15
15356	0.153	0.70	0.08	0.63
15357	0.124	0.436	0.05	0.36
15358	0.015	0.081	0.13	0.53
15359	0.035	0.235	0.02	0.17
15360	0.047	0.225	0.04	0.14
15361	0.005	0.051	<0.005	<0.005
15362	0.77	0.81	0.07	3.37
15363	0.072	1.11	0.25	1.42
15364	0.014	0.330	0.05	1.36
15365	0.040	0.499	0.04	0.24
15366	0.077	0.260	0.02	0.20
15367	0.062	0.264	0.04	0.15
15368	0.473	0.070	0.50	1.89
15369	0.079	0.60	0.07	0.50
15370	0.090	0.55	0.16	0.45
15371	0.171	0.327	0.06	0.32
15372	0.261	0.253	0.31	0.57

Certified by 

1 Cameron Ave., P.O. Box 10, Swastika, Ontario P0K 1T0
Telephone (705) 642-3244 Fax (705) 642-3300

***** Certificate of analysis *****

Laboratoire Expert Inc.

127, Boulevard Industriel
Rouyn-Noranda, Québec
Canada, J9X 6P2
Telephone : (819) 762-7100, Fax : (819) 762-7510

Date : 2009/02/06

Page : 1 of 21

Client : Amador Gold Corporation	
Addressee : Darlene Wojtczak	Folder : 24065
	Your order number :
	Project : JEWEL
	Total number of samples : 121

Designation	Au DCP-1 ppb 5	Au-Dup DCP-1 ppb 5	Pt DCP-1 ppb 5	Pt-Dup DCP-1 ppb 5	Pd DCP-1 ppb 5	Pd-Dup DCP-1 ppb 5	Ag AAT-7 ppm 0.2	Ag-Dup AAT-7 ppm 0.2
121451	<5	<5	<5	<5	<5	<5	<0.2	<0.2
121452	<5		<5		<5		<0.2	
121453	<5		<5		<5		<0.2	
121454	<5		<5		<5		<0.2	
121455	<5		<5		<5		<0.2	
121456	<5		<5		<5		<0.2	
121457	<5		<5		<5		<0.2	
121458	<5		<5		<5		<0.2	
100801	<5		<5		<5		<0.2	
100802	<5		<5		<5		<0.2	
100803	<5		5		<5		<0.2	
100804	<5		8		5		<0.2	
100805	<5	<5	<5	<5	5	<5	<0.2	<0.2
100806	<5		8		<5		<0.2	
100807	<5		11		7		<0.2	
100808	<5		8		5		<0.2	
100809	<5		11		31		<0.2	
100810	<5		9		18		<0.2	
100811	5		19		75		<0.2	
100812	<5		163		428		0.2	



Joe Landers, Manager

***** Certificate of analysis *****

Laboratoire Expert Inc.

127, Boulevard Industriel
Rouyn-Noranda, Québec
Canada, J9X 6P2
Telephone : (819) 762-7100, Fax : (819) 762-7510

Date : 2009/02/06

Page : 2 of 21

Client : Amador Gold Corporation	
Addressee : Darlene Wojtczak	Folder : 24065
	Your order number :
	Project : JEWEL
	Total number of samples : 121

<u>Designation</u>	Au DCP-1 ppb 5	Au-Dup DCP-1 ppb 5	Pt DCP-1 ppb 5	Pt-Dup DCP-1 ppb 5	Pd DCP-1 ppb 5	Pd-Dup DCP-1 ppb 5	Ag AAT-7 ppm 0.2	Ag-Dup AAT-7 ppm 0.2
100813	23		116		558		.03	
100814	13		42		138		0.2	
100815	<5		25		34		<0.2	
100816	<5		135		132		<0.2	
100817	9	11	84	82	267	264	<0.2	<0.2
100818	<5		35		114		<0.2	
100819	18		123		508		<0.2	
100820	6		429		493		<0.2	
100821	9		48		142		<0.2	
100822	<5		<5		<5		<0.2	
100823	7		95		481		0.2	
100824	15		140		537		<0.2	
100825	14		74		78		0.8	
100826	6	6	151	144	1002	1049	0.3	
100827	<5		147		433		<0.2	
100828	10		205		407		<0.2	
100829	9	9	62	58	138	140	<0.2	<0.2
100830	<5		36		48		<0.2	
100831	<5		29		81		<0.2	
100832	<5		<5		<5		<0.2	

***** Certificate of analysis *****

Laboratoire Expert Inc.

127, Boulevard Industriel
Rouyn-Noranda, Québec
Canada, J9X 6P2
Telephone : (819) 762-7100, Fax : (819) 762-7510

Date : 2009/02/06

Page : 3 of 21

Client : Amador Gold Corporation	
Addressee : Darlene Wojtczak	Folder : 24065
	Your order number :
	Project : JEWEL
	Total number of samples : 121

Designation	Au DCP-1 ppb 5	Au-Dup DCP-1 ppb 5	Pt DCP-1 ppb 5	Pt-Dup DCP-1 ppb 5	Pd DCP-1 ppb 5	Pd-Dup DCP-1 ppb 5	Ag AAT-7 ppm 0.2	Ag-Dup AAT-7 ppm 0.2
100833	<5		104		69		<0.2	
100834	16		165		450		0.2	
100835	17		110		258		0.3	
100836	8		54		176		<0.2	
100837	<5		14		33		<0.2	
100838	<5		11		35		<0.2	
100839	<5		28		66		<0.2	
100840	92		47		92		<0.2	
100841	9	6	11	7	12	12	<0.2	<0.2
100842	<5		14		15		<0.2	
100843	10		48		52		<0.2	
100844	<5		23		109		<0.2	
100845	5		218		277		<0.2	
100846	7	5	152	146	1023	1040	0.3	
100847	6		13		28		<0.2	
100848	6		39		93		0.2	
100849	<5		10		12		<0.2	
100850	<5		<5		<5		<0.2	
100951	<5		27		159		<0.2	
100952	10	9	480	507	1085	1107	0.2	

***** Certificate of analysis *****

Laboratoire Expert Inc.

127, Boulevard Industriel
Rouyn-Noranda, Québec
Canada, J9X 6P2
Telephone : (819) 762-7100, Fax : (819) 762-7510

Date : 2009/02/06

Page : 4 of 21

Client : Amador Gold Corporation	
Addressee : Darlene Wojtczak	Folder : 24065
	Your order number :
	Project : JEWEL
	Total number of samples : 121

Designation	Au DCP-1 ppb 5	Au-Dup DCP-1 ppb 5	Pt DCP-1 ppb 5	Pt-Dup DCP-1 ppb 5	Pd DCP-1 ppb 5	Pd-Dup DCP-1 ppb 5	Ag AAT-7 ppm 0.2	Ag-Dup AAT-7 ppm 0.2
100953	5	<5	131	140	167	164	<0.2	<0.2
100954	5		132		99		<0.2	
100955	6		18		67		<0.2	
100956	45		200		407		0.3	
100957	38		95		212		<0.2	
100958	<5		18		31		<0.2	
100959	9		74		155		0.2	
100960	5		11		22		<0.2	
100961	<5		<5		<5		<0.2	
100962	7		11		12		<0.2	
100963	<5		6		7		<0.2	
100964	<5		5		<5		<0.2	
100965	<5	<5	<5	<5	<5	<5	<0.2	<0.2
100966	5		7		7		<0.2	
100967	11		294		482		0.2	
100968	11		77		914		0.4	
100969	8		36		526		0.2	
100970	8		6		222		0.3	
100971	15		37		97		0.3	
100972	36		65		90		0.5	

***** Certificate of analysis *****

Laboratoire Expert Inc.

127, Boulevard Industriel
Rouyn-Noranda, Québec
Canada, J9X 6P2
Telephone : (819) 762-7100, Fax : (819) 762-7510

Date : 2009/02/06

Page : 5 of 21

Client : Amador Gold Corporation	
Addressee : Darlene Wojtczak	Folder : 24065
	Your order number :
	Project : JEWEL
	Total number of samples : 121

Designation	Au DCP-1 ppb 5	Au-Dup DCP-1 ppb 5	Pt DCP-1 ppb 5	Pt-Dup DCP-1 ppb 5	Pd DCP-1 ppb 5	Pd-Dup DCP-1 ppb 5	Ag AAT-7 ppm 0.2	Ag-Dup AAT-7 ppm 0.2
100973	31		32		91		<0.2	
100974	14		18		33		0.2	
100975	13		74		79		0.9	
100976	11		17		52		0.9	
100977	<5	<5	<5	<5	<5	<5	<0.2	<0.2
100978	<5		14		60		0.2	
100979	7		137		127		<0.2	
100980	12		40		127		0.2	
100981	6		75		201		<0.2	
100982	6		18		59		<0.2	
100983	13		8		10		0.2	
100984	13		74		178		0.2	
100985	6		37		196		0.2	
100986	<5		5		13		<0.2	
100987	<5		5		154		<0.2	
100988	<5		5		<5		<0.2	
100989	<5	<5	<5	<5	<5	<5	<0.2	<0.2
100990	<5		<5		<5		<0.2	
100991	<5		<5		<5		<0.2	
100992	<5		<5		<5		<0.2	

***** Certificate of analysis *****

Laboratoire Expert Inc.

127, Boulevard Industriel
Rouyn-Noranda, Québec
Canada, J9X 6P2
Telephone : (819) 762-7100, Fax : (819) 762-7510

Date : 2009/02/06

Page : 6 of 21

Client : Amador Gold Corporation	
Addressee : Darlene Wojtczak	Folder : 24065
	Your order number :
	Project : JEWEL
	Total number of samples : 121

Designation	Au DCP-1 ppb 5	Au-Dup DCP-1 ppb 5	Pt DCP-1 ppb 5	Pt-Dup DCP-1 ppb 5	Pd DCP-1 ppb 5	Pd-Dup DCP-1 ppb 5	Ag AAT-7 ppm 0.2	Ag-Dup AAT-7 ppm 0.2
100993	<5		<5		<5		<0.2	
100994	9		<5		<5		<0.2	
100995	<5		5		<5		<0.2	
100996	<5		11		7		<0.2	
100997	<5		9		<5		0.5	
100998	<5		<5		<5		<0.2	
100999	<5		<5		<5		0.3	
101000	<5		<5		<5		<0.2	
100114	<5	<5	<5	<5	<5	<5	<0.2	<0.2
100115	<5		<5		<5		<0.2	
100116	<5		<5		<5		<0.2	
100117	<5		5		<5		<0.2	
100118	<5		5		<5		<0.2	
100119	<5		6		<5		<0.2	
100120	<5		<5		<5		<0.2	
100121	<5		<5		<5		<0.2	
100122	<5		<5		<5		<0.2	
100123	<5		<5		<5		<0.2	
100124	<5		<5		<5		<0.2	
100125	14		75		77		0.9	

***** Certificate of analysis *****

Laboratoire Expert Inc.

127, Boulevard Industriel
 Rouyn-Noranda, Québec
 Canada, J9X 6P2
 Telephone : (819) 762-7100, Fax : (819) 762-7510

Date : 2009/02/06

Page : 7 of 21

Client : Amador Gold Corporation	
Addressee : Darlene Wojtczak	Folder : 24065
	Your order number :
	Project : JEWEL
	Total number of samples : 121

<u>Designation</u>	Au DCP-1 ppb 5	Au-Dup DCP-1 ppb 5	Pt DCP-1 ppb 5	Pt-Dup DCP-1 ppb 5	Pd DCP-1 ppb 5	Pd-Dup DCP-1 ppb 5	Ag AAT-7 ppm 0.2	Ag-Dup AAT-7 ppm 0.2
100126	<5	<5	15	11	19	25	<0.2	<0.2

***** Certificate of analysis *****

Laboratoire Expert Inc.

127, Boulevard Industriel
Rouyn-Noranda, Québec
Canada, J9X 6P2
Telephone : (819) 762-7100, Fax : (819) 762-7510

Date : 2009/02/06

Page : 8 of 21

Client : Amador Gold Corporation	
Addressee : Darlene Wojtczak	Folder : 24065
	Your order number :
	Project : JEWEL
	Total number of samples : 121

Designation	Cu AAT-7 ppm 2	Cu-Dup AAT-7 ppm 2	Ni AAT-7 ppm 2	Ni-Dup AAT-7 ppm 2	Zn AAT-7 ppm 2	Zn-Dup AAT-7 ppm 2	Pb AAT-7 ppm 2	Pb-Dup AAT-7 ppm 2
121451	93	85	13	14	27	17	31	28
121452	41		38		28		7	
121453	185		44		29		7	
121454	112		42		22		7	
121455	111		46		39		10	
121456	52		38		27		7	
121457	21		68		23		7	
121458	42		64		19		6	
100801	14		44		23		6	
100802	13		52		23		5	
100803	25		386		61		12	
100804	26		333		65		12	
100805	18	17	178	163	36	34	10	12
100806	31		367		48		12	
100807	26		162		27		8	
100808	28		111		16		5	
100809	66		366		42		10	
100810	40		309		40		11	
100811	143		662		38		10	
100812	511		772		38		21	

Laboratoire Expert Inc.

127, Boulevard Industriel
 Rouyn-Noranda, Québec
 Canada, J9X 6P2
 Telephone : (819) 762-7100, Fax : (819) 762-7510

*** Certificate of analysis ***

Date : 2009/02/06

Page : 9 of 21

Client : Amador Gold Corporation	
Addressee : Darlene Wojtczak	Folder : 24065
	Your order number :
	Project : JEWEL
	Total number of samples : 121

Designation	Cu AAT-7 ppm 2	Cu-Dup AAT-7 ppm 2	Ni AAT-7 ppm 2	Ni-Dup AAT-7 ppm 2	Zn AAT-7 ppm 2	Zn-Dup AAT-7 ppm 2	Pb AAT-7 ppm 2	Pb-Dup AAT-7 ppm 2
100813	785		729		58		25	
100814	569		390		47		18	
100815	65		310		29		23	
100816	244		2053		52		33	
100817	367	368	3770	3700	38	40	40	41
100818	122		1809		78		44	
100819	457		5460		97		127	
100820	513		3150		63		14	
100821	423		776		58		12	
100822	37		155		31		7	
100823	1353		3910		63		130	
100824	736		5660		230		498	
100825	1887		----- >DL		82		48	
100826	912		2085		153		97	
100827	753		3760		78		46	
100828	567		4610		74		62	
100829	260	265	1862	1826	26	23	15	17
100830	154		592		20		21	
100831	103		773		31		32	
100832	353		322		51		9	

>DL Value greater than detection limit

***** Certificate of analysis *****

Laboratoire Expert Inc.

127, Boulevard Industriel
Rouyn-Noranda, Québec
Canada, J9X 6P2
Telephone : (819) 762-7100, Fax : (819) 762-7510

Date : 2009/02/06

Page : 10 of 21

Client : Amador Gold Corporation	
Addressee : Darlene Wojtczak	Folder : 24065
	Your order number :
	Project : JEWEL
	Total number of samples : 121

Designation	Cu AAT-7 ppm 2	Cu-Dup AAT-7 ppm 2	Ni AAT-7 ppm 2	Ni-Dup AAT-7 ppm 2	Zn AAT-7 ppm 2	Zn-Dup AAT-7 ppm 2	Pb AAT-7 ppm 2	Pb-Dup AAT-7 ppm 2
100833	371		436		50		9	
100834	380		5240		31		10	
100835	1564		8760		43		10	
100836	252		2690		40		7	
100837	156		835		21		7	
100838	178		810		28		6	
100839	129		487		22		5	
100840	309		385		24		7	
100841	78	74	502	475	22	22	7	10
100842	231		652		34		11	
100843	147		582		27		9	
100844	167		426		21		8	
100845	309		584		19		8	
100846	636		473		14		9	
100847	36		117		29		7	
100848	185		928		63		11	
100849	43		400		26		7	
100850	88		42		23		26	
100951	49		1040		23		8	
100952	52		5040		31		12	

***** Certificate of analysis *****

Laboratoire Expert Inc.

127, Boulevard Industriel
 Rouyn-Noranda, Québec
 Canada, J9X 6P2
 Telephone : (819) 762-7100, Fax : (819) 762-7510

Date : 2009/02/06

Page : 11 of 21

Client : Amador Gold Corporation	
Addressee : Darlene Wojtczak	Folder : 24065
	Your order number :
	Project : JEWEL
	Total number of samples : 121

Designation	Cu AAT-7 ppm 2	Cu-Dup AAT-7 ppm 2	Ni AAT-7 ppm 2	Ni-Dup AAT-7 ppm 2	Zn AAT-7 ppm 2	Zn-Dup AAT-7 ppm 2	Pb AAT-7 ppm 2	Pb-Dup AAT-7 ppm 2
100953	127	118	1401	1388	19	17	11	12
100954	102		694		12		10	
100955	160		420		15		7	
100956	1172		3300		30		15	
100957	367		3970		19		11	
100958	294		1261		33		10	
100959	445		1959		25		9	
100960	48		133		24		6	
100961	33		69		40		8	
100962	24		135		34		8	
100963	36		93		38		9	
100964	35		60		37		9	
100965	39	41	55	56	36	36	7	11
100966	33		466		38		8	
100967	843		5700		23		6	
100968	3500		----- >DL		27		8	
100969	341		3780		20		6	
100970	830		786		33		7	
100971	387		848		38		21	
100972	353		1479		222		248	

>DL Value greater than detection limit

***** Certificate of analysis *****

Laboratoire Expert Inc.

127, Boulevard Industriel
Rouyn-Noranda, Québec
Canada, J9X 6P2
Telephone : (819) 762-7100, Fax : (819) 762-7510

Date : 2009/02/06

Page : 12 of 21

Client : Amador Gold Corporation	
Addressee : Darlene Wojtczak	Folder : 24065
	Your order number :
	Project : JEWEL
	Total number of samples : 121

Designation	Cu AAT-7 ppm 2	Cu-Dup AAT-7 ppm 2	Ni AAT-7 ppm 2	Ni-Dup AAT-7 ppm 2	Zn AAT-7 ppm 2	Zn-Dup AAT-7 ppm 2	Pb AAT-7 ppm 2	Pb-Dup AAT-7 ppm 2
100973	442		1803		31		18	
100974	249		1374		19		14	
100975	1815		----- >DL		88		48	
100976	382		1641		27		10	
100977	33	33	183	177	44	43	9	13
100978	187		932		37		13	
100979	119		771		20		9	
100980	455		1810		31		8	
100981	252		2910		23		8	
100982	76		1783		24		10	
100983	58		1148		19		10	
100984	614		4040		20		10	
100985	347		1948		26		10	
100986	58		120		25		5	
100987	245		443		28		8	
100988	84		360		27		6	
100989	25	27	84	83	28	27	5	9
100990	71		69		68		8	
100991	152		49		57		6	
100992	441		99		92		8	

>DL Value greater than detection limit

***** Certificate of analysis *****

Laboratoire Expert Inc.

127, Boulevard Industriel
 Rouyn-Noranda, Québec
 Canada, J9X 6P2
 Telephone : (819) 762-7100, Fax : (819) 762-7510

Date : 2009/02/06

Page : 13 of 21

Client : Amador Gold Corporation	
Addressee : Darlene Wojtczak	Folder : 24065
	Your order number :
	Project : JEWEL
	Total number of samples : 121

Designation	Cu AAT-7 ppm 2	Cu-Dup AAT-7 ppm 2	Ni AAT-7 ppm 2	Ni-Dup AAT-7 ppm 2	Zn AAT-7 ppm 2	Zn-Dup AAT-7 ppm 2	Pb AAT-7 ppm 2	Pb-Dup AAT-7 ppm 2
100993	194		72		65		6	
100994	231		57		58		7	
100995	251		145		50		10	
100996	38		294		57		10	
100997	20		218		48		16	
100998	14		67		31		7	
100999	309		57		32		7	
101000	80		15		13		41	
100114	35	33	53	53	40	38	9	11
100115	39		129		41		21	
100116	17		76		17		11	
100117	12		37		9		14	
100118	28		21		12		12	
100119	9		27		10		9	
100120	11		9		5		10	
100121	114		58		71		15	
100122	103		68		33		12	
100123	15		27		10		7	
100124	16		32		10		7	
100125	1796		----- >DL		83		46	

>DL Value greater than detection limit

***** Certificate of analysis *****

Laboratoire Expert Inc.

127, Boulevard Industriel
 Rouyn-Noranda, Québec
 Canada, J9X 6P2
 Telephone : (819) 762-7100, Fax : (819) 762-7510

Date : 2009/02/06
Page : 14 of 21

Client : Amador Gold Corporation	
Addressee : Darlene Wojtczak	Folder : 24065
	Your order number :
	Project : JEWEL
	Total number of samples : 121

<u>Designation</u>	Cu AAT-7 ppm 2	Cu-Dup AAT-7 ppm 2	Ni AAT-7 ppm 2	Ni-Dup AAT-7 ppm 2	Zn AAT-7 ppm 2	Zn-Dup AAT-7 ppm 2	Pb AAT-7 ppm 2	Pb-Dup AAT-7 ppm 2
100126	61	61	119	114	17	17	11	12

***** Certificate of analysis *****

Laboratoire Expert Inc.

127, Boulevard Industriel
 Rouyn-Noranda, Québec
 Canada, J9X 6P2
 Telephone : (819) 762-7100, Fax : (819) 762-7510

Date : 2009/02/06

Page : 15 of 21

Client : Amador Gold Corporation	
Addressee : Darlene Wojtczak	Folder : 24065
	Your order number :
	Project : JEWEL
	Total number of samples : 121

<u>Designation</u>	<u>Co AAT-7 ppm 2</u>	<u>Co-Dup AAT-7 ppm 2</u>	<u>Ni AAT-8 % 0.010</u>
121451	14	12	
121452	15		
121453	18		
121454	16		
121455	20		
121456	14		
121457	15		
121458	11		
100801	7		
100802	8		
100803	36		
100804	34		
100805	22	21	
100806	38		
100807	18		
100808	11		
100809	30		
100810	30		
100811	28		
100812	38		

***** Certificate of analysis *****

Laboratoire Expert Inc.

127, Boulevard Industriel
 Rouyn-Noranda, Québec
 Canada, J9X 6P2
 Telephone : (819) 762-7100, Fax : (819) 762-7510

Date : 2009/02/06

Page : 16 of 21

Client : Amador Gold Corporation	
Addressee : Darlene Wojtczak	Folder : 24065
	Your order number :
	Project : JEWEL
	Total number of samples : 121

<u>Designation</u>	Co AAT-7 ppm 2	Co-Dup AAT-7 ppm 2	Ni AAT-8 % 0.010
100813	35		
100814	18		
100815	21		
100816	96		
100817	99	100	
100818	98		
100819	152		0.550
100820	84		
100821	39		
100822	14		
100823	115		
100824	136		0.560
100825	405		1.940
100826	87		
100827	113		
100828	128		
100829	65	62	
100830	37		
100831	42		
100832	15		

***** Certificate of analysis *****

Laboratoire Expert Inc.

127, Boulevard Industriel
 Rouyn-Noranda, Québec
 Canada, J9X 6P2
 Telephone : (819) 762-7100, Fax : (819) 762-7510

Date : 2009/02/06

Page : 17 of 21

Client : Amador Gold Corporation	
Addressee : Darlene Wojtczak	Folder : 24065
	Your order number :
	Project : JEWEL
	Total number of samples : 121

<u>Designation</u>	<u>Co AAT-7 ppm 2</u>	<u>Co-Dup AAT-7 ppm 2</u>	<u>Ni AAT-8 % 0.010</u>
100833	25		
100834	129		0.510
100835	242		0.880
100836	76		
100837	43		
100838	34		
100839	25		
100840	26		
100841	38	37	
100842	51		
100843	41		
100844	22		
100845	22		
100846	24		
100847	22		
100848	65		
100849	30		
100850	13		
100951	47		
100952	128		0.490

*** Certificate of analysis ***

Laboratoire Expert Inc.

127, Boulevard Industriel
Rouyn-Noranda, Québec
Canada, J9X 6P2
Telephone : (819) 762-7100, Fax : (819) 762-7510

Date : 2009/02/06

Page : 18 of 21

Client : Amador Gold Corporation	
Addressee : Darlene Wojtczak	Folder : 24065
	Your order number :
	Project : JEWEL
	Total number of samples : 121

<u>Designation</u>	<u>Co AAT-7 ppm 2</u>	<u>Co-Dup AAT-7 ppm 2</u>	<u>Ni AAT-8 % 0.010</u>
100953	71	71	
100954	53		
100955	17		
100956	101		
100957	111		
100958	69		
100959	74		
100960	18		
100961	19		
100962	20		
100963	20		
100964	14		
100965	16	17	
100966	37		
100967	193		0.560
100968	534		1.450
100969	134		
100970	35		
100971	46		
100972	65		

***** Certificate of analysis *****

Laboratoire Expert Inc.

127, Boulevard Industriel
 Rouyn-Noranda, Québec
 Canada, J9X 6P2
 Telephone : (819) 762-7100, Fax : (819) 762-7510

Date : 2009/02/06

Page : 19 of 21

Client : Amador Gold Corporation	
Addressee : Darlene Wojtczak	Folder : 24065
	Your order number :
	Project : JEWEL
	Total number of samples : 121

<u>Designation</u>	Co AAT-7 ppm 2	Co-Dup AAT-7 ppm 2	Ni AAT-8 % 0.010
100973	76		
100974	68		
100975	398		1.990
100976	66		
100977	16	16	
100978	48		
100979	41		
100980	72		
100981	85		
100982	76		
100983	56		
100984	112		
100985	86		
100986	11		
100987	22		
100988	21		
100989	13	12	
100990	27		
100991	21		
100992	55		

***** Certificate of analysis *****

Laboratoire Expert Inc.

127, Boulevard Industriel
 Rouyn-Noranda, Québec
 Canada, J9X 6P2
 Telephone : (819) 762-7100, Fax : (819) 762-7510

Date : 2009/02/06

Page : 20 of 21

Client : Amador Gold Corporation	
Addressee : Darlene Wojtczak	Folder : 24065
	Your order number :
	Project : JEWEL
	Total number of samples : 121

<u>Designation</u>	<u>Co AAT-7 ppm 2</u>	<u>Co-Dup AAT-7 ppm 2</u>	<u>Ni AAT-8 % 0.010</u>
100993	33		
100994	21		
100995	26		
100996	29		
100997	21		
100998	14		
100999	21		
101000	12		
100114	15	15	
100115	25		
100116	9		
100117	4		
100118	2		
100119	3		
100120	2		
100121	19		
100122	20		
100123	4		
100124	3		
100125	383		1.980

***** Certificate of analysis *****

Laboratoire Expert Inc.

127, Boulevard Industriel
Rouyn-Noranda, Québec
Canada, J9X 6P2
Telephone : (819) 762-7100, Fax : (819) 762-7510

Date : 2009/02/06
Page : 21 of 21

Client : Amador Gold Corporation	
Addressee : Darlene Wojtczak	Folder : 24065
	Your order number :
	Project : JEWEL
	Total number of samples : 121

<u>Designation</u>	Co AAT-7 ppm 2	Co-Dup AAT-7 ppm 2	Ni AAT-8 % 0.010
100126	29	29	