



32004SE0416 10 SKEAD

010

Diamond Drilling

Township of SKEAD

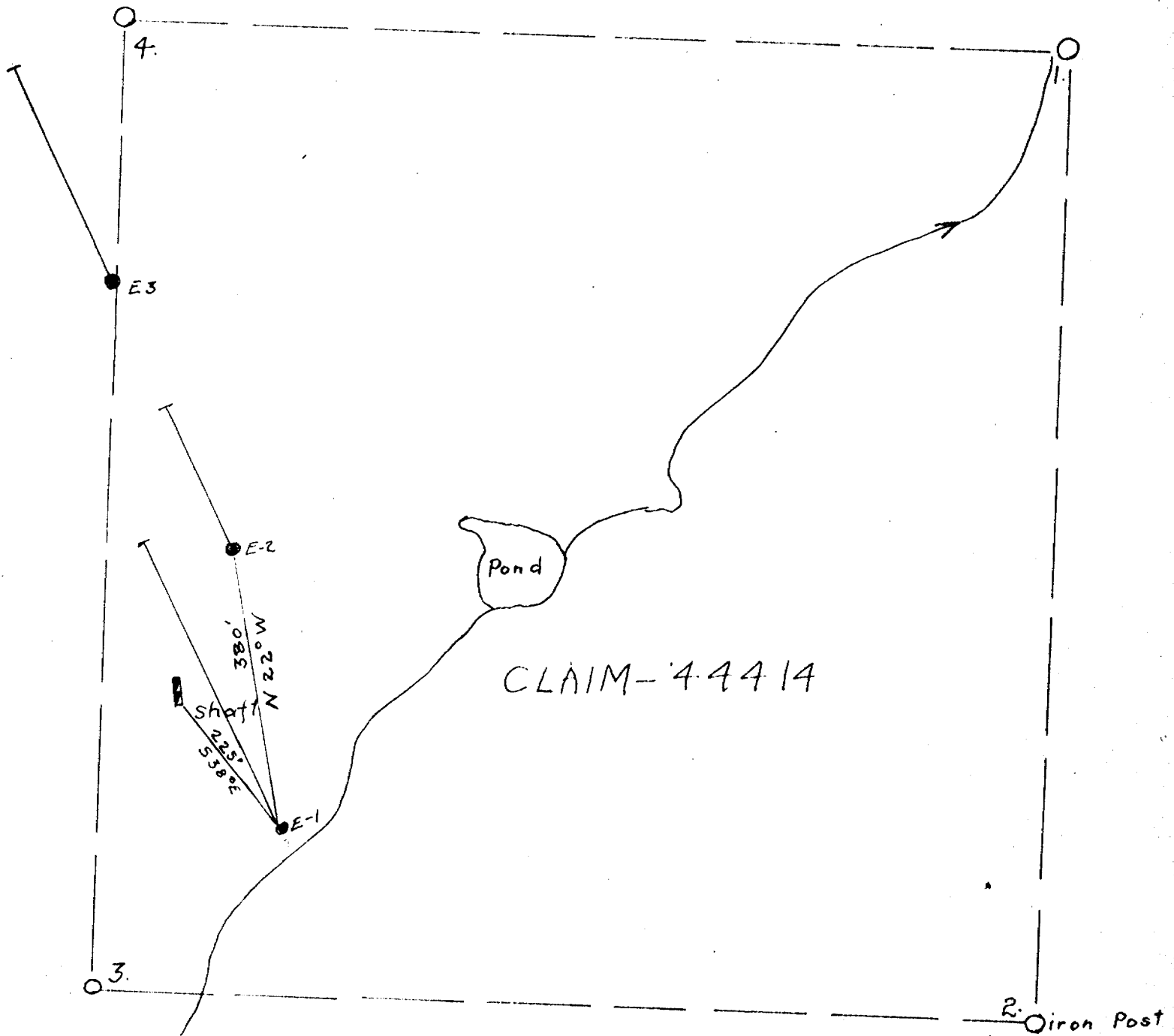
Report No 10

Work performed by: Elgo Mines Limited

Claim No	Hole No	Footage	Date	Note
L 44414	E-1	595.0'	Oct/60	
	E-2	205.0'	Oct/60	
L 44416	#1	309.0'	Oct/60	
L 44415	E-3	454.0'	Oct/60	

Notes:

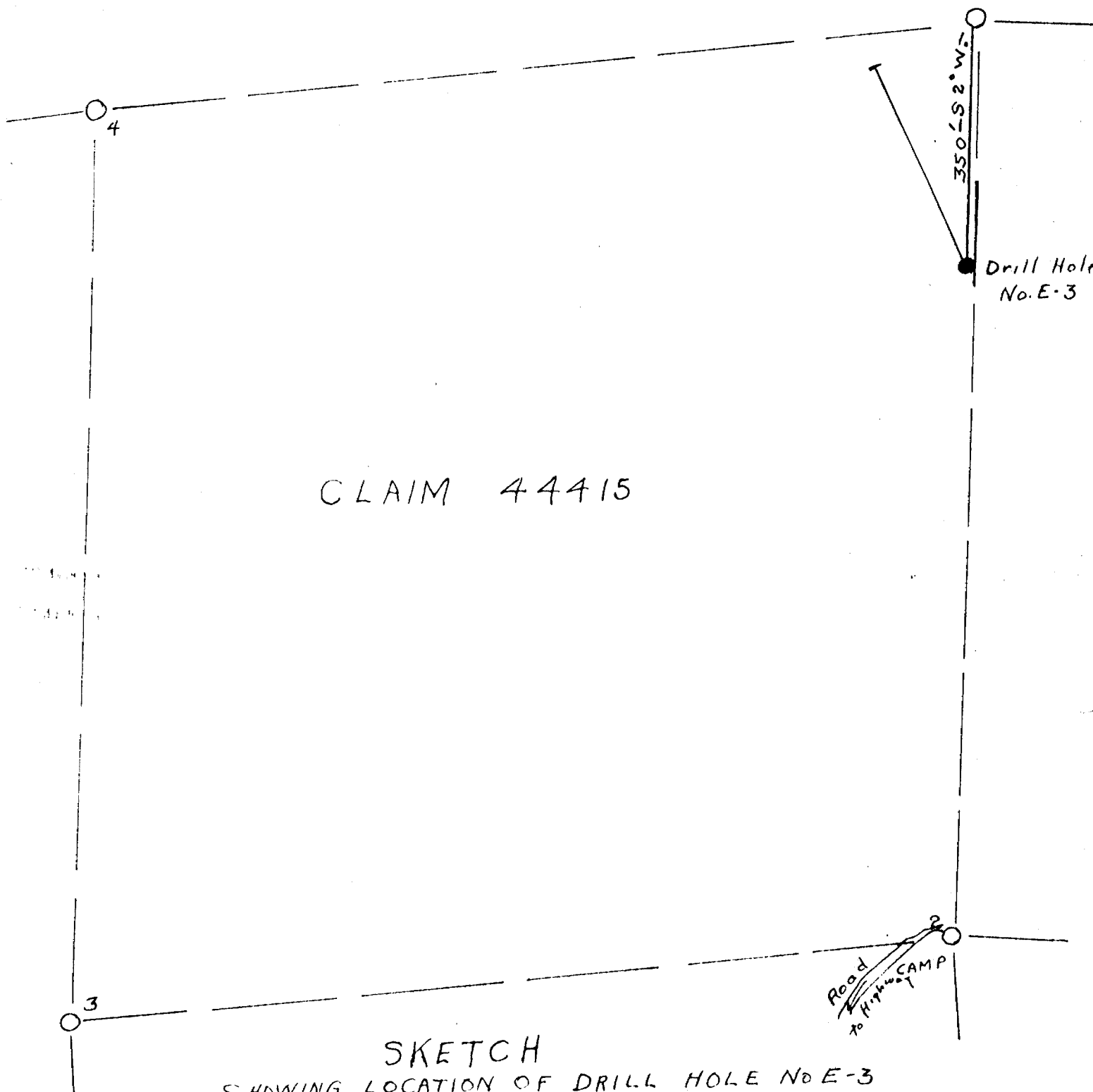
Stead Twp.



CLAIM-44414

SKETCH  
Showing Location of Drill Holes E-1, E-2  
ELGO MINES LTD.  
Nov. 8, 1960      Scale 1" = 200'

J.E.J.



CLAIM 44415

SKETCH  
SHOWING LOCATION OF DRILL HOLE No E-3

ELGO MINES Ltd.,

Nov. 8, 1960

Scale 1" = 200'

JES

# DIAMOND DRILL RECORD

**RECEIVED**  
**NOV 9 - 1962**  
**TEMBIKAMING**  
**MINING DIVISION**

PROPERTY ELGO MINES LTD. HOLE NO. 1  
 SHEET NUMBER \_\_\_\_\_ SECTION FROM \_\_\_\_\_ TO \_\_\_\_\_ STARTED October 11th, 1962  
 LATITUDE \_\_\_\_\_ DATUM \_\_\_\_\_ COMPLETED October 19th, 1962  
 DEPARTMENT \_\_\_\_\_ BEARING N 28° W ULTIMATE DEPTH 309'  
 ELEVATION \_\_\_\_\_ DIP -40° PROPOSED DEPTH \_\_\_\_\_

DEPTH FEET	FORMATION	SAMPLE NO.	WIDTH OF SAMPLE	GOLD \$	SLUDGE GOLD \$
	Bedrock setup				
0.0'	2.3' Andesite - slight chlor. alt.				
	3.6' Andesite - strong dissem. pyrite, 0.4' barren white quartz	22438	1.3'	0.01	
	4.3' Andesite - very weak dissem. pyrite				
	4.8' Andesite - strong sil., strong dissem. pyrite	22439	0.5'	0.01	
	5.2' Andesite - fine grained, weak chlor..				
	7.7' Andesite - alt., med. chlor., med. dissem. pyrite	22440	0.5'	0.01	
	15.8' Andesite - fine grained, weak to med. chlor., weak dissem. pyrite, 1/2" strgr. white quartz at 12.0'				
	16.4' Andesite -, strong sil., strong dissem. pyrite, 2" barren white quartz.	22441	0.6'	0.01	
	19.3' Andesite - fine grained, weak to med. chlor.				
	20.0' Syenite - med. grain, red.				
	20.4' Andesite - strong sil., med. pyrite, 0.1' white quartz	22442	0.4'	Nil	
	48.8' Andesite - Fine grain, med. to strong chlor., very weak pyrite, occ. syenite dikelet				

# DIAMOND DRILL RECORD

PROPERTY ELGO MINES LTD.. HOLE NO. 1

SHEET NUMBER 2 SECTION FROM \_\_\_\_\_ TO \_\_\_\_\_ STARTED \_\_\_\_\_  
 LATITUDE \_\_\_\_\_ DATUM \_\_\_\_\_ COMPLETED \_\_\_\_\_  
 DEPARTURE \_\_\_\_\_ BEARING \_\_\_\_\_ ULTIMATE DEPTH \_\_\_\_\_  
 ELEVATION \_\_\_\_\_ DIP \_\_\_\_\_ PROPOSED DEPTH \_\_\_\_\_

DEPTH FEET	FORMATION	SAMPLE NO.	WIDTH OF SAMPLE	GOLD \$	SLUDGE GOLD \$
48.8' - 62.0'	Syenite - med. grain, red. @55' - 0.3' barren wh. qtz. 58' - 0.1' " " "				
64.2'	Andesite - fine grain, med. chlor., weak pyrite.				
66.0'	Andesite - alt., about 70% qtz., med. pyrite.	22443	1.8'	0.02	
80.2'	Andesite - fine grain, weak to med. chlor., very weak pyrite - locally strong- erbat 71.5'.				
81.9'	Andesite - strong brownish alt., med. dissem. pyrite.	22444	1.7'	0.01	
115.8'	Andesite - Fine grain, med. chlor., @90.5' - 0.4' qtz. & fels., no min..				
127.5'	Syenite - red, med. grain, very wk. pyrite.				
172.5'	Andesite - med. grain, grey, @ 162' - 0.2' qtz. 163' - 0.1' qtz. 169' - 0.2' qtz. & And., strong pyrite.				
285.0'	Andesite - fine to med. grain, med. to strg. fract. and alt., local weak pyrite. @ 175' - 0.1' barren white qtz. 196' - 0.2' " " " 242' - 0.1' " " " 265' - 0.7' white qtz. with pyritized And..	22445	0.7'	nil	

DRILLED BY .....

SIGNED .....

*[Handwritten Signature]*

# DIAMOND DRILL RECORD

PROPERTY ELGO MINES LTD..HOLE NO. 1SHEET NUMBER 3 SECTION FROM \_\_\_\_\_ TO \_\_\_\_\_ STARTED \_\_\_\_\_

LATITUDE \_\_\_\_\_ DATUM \_\_\_\_\_ COMPLETED \_\_\_\_\_

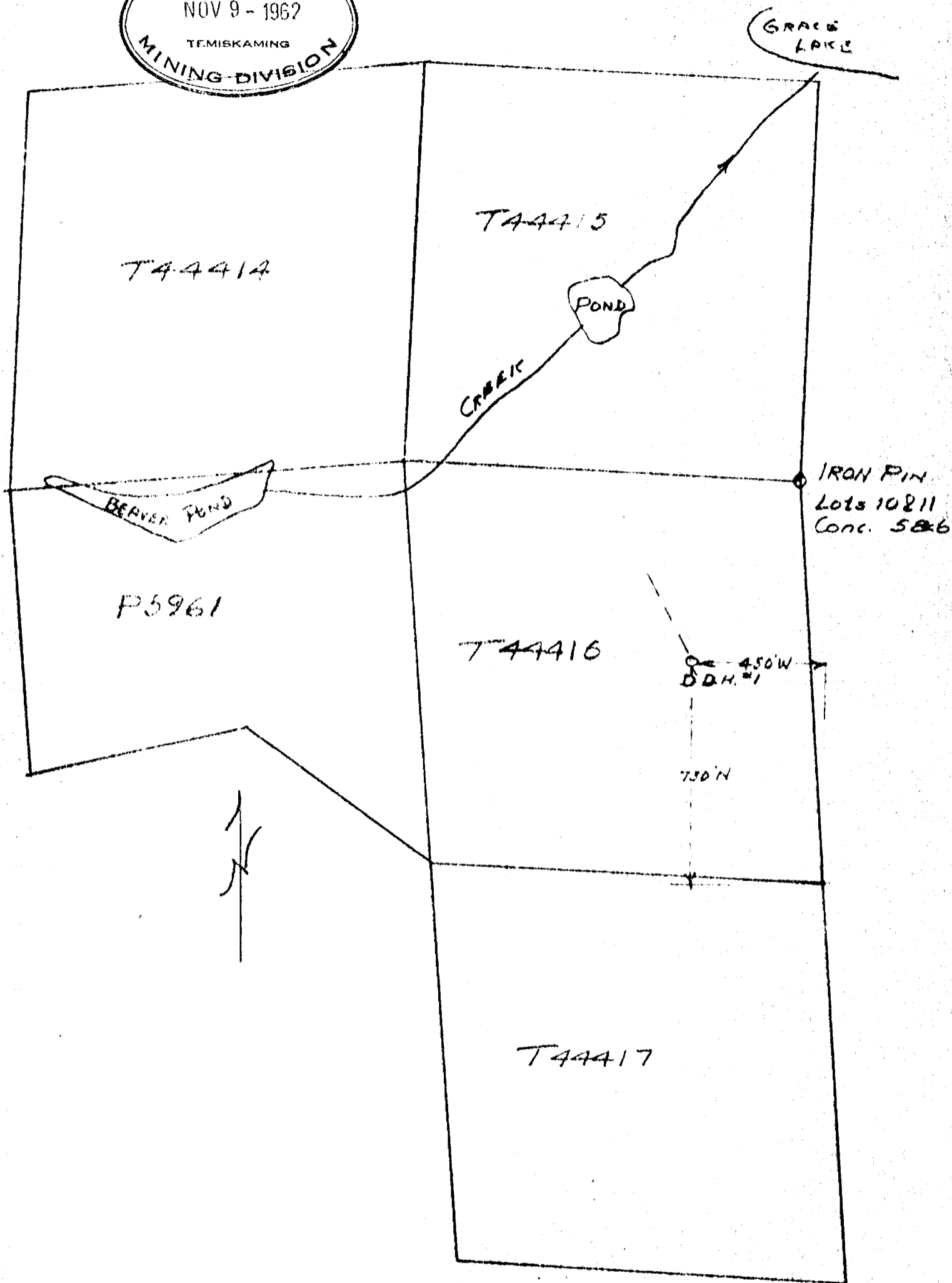
DEPARTURE \_\_\_\_\_ BEARING \_\_\_\_\_ ULTIMATE DEPTH \_\_\_\_\_

ELEVATION \_\_\_\_\_ DIP \_\_\_\_\_ PROPOSED DEPTH \_\_\_\_\_

DEPTH FEET	FORMATION	SAMPLE NO.	WIDTH OF SAMPLE	GOLD \$	SLUDGE GOLD \$		
285.0' - 285.9'	Quartz - white , weak pyrite, 0.1' well pyritized And. on either wall	22446	0.9'	nil			
286.5'	Andesite- med. grain, grey, slight alt..						
287.8'	Andesite- Strong brownish alt., strong pyrite.	22447	1.3'	0.01			
309.0'	Andesite- med. grain , grey..						
Hole Bottomed at 309.0'							

DRILLED BY ALTON MCKNIGHT, COBALT, ONTARIO.SIGNED [Signature]

RECEIVED  
NOV 9 - 1962  
TEMISKAMING  
MINING DIVISION



HENRY A. FABIS' CLAIMS

SKEAD TWP.

Scale - 1" = 400' - Nov. 7/62

# DIAMOND DRILL RECORD

PROPERTY ELGO MINES LTD HOLE NO. E2 DIP 45° LOCATION N 23 W Astro  
 Skead Twp 630' N 10° 30'E of #3 post of claim 44414 N 23 W Astro

Sheet No. 1

LOG		
FROM	TO	DESCRIPTION
0	9	Casing in overburden
9	205	Syenite, med. coarse gr. acidic, grayish pink to deep brick; some more basic phases-all gradational; all s.m. fine to med py. Note: all quartz logged appears barren of mineral except as noted. Quartz is opaque to milky - usually the "bull quartz" type. Little fracturing.
		Quartz:
		96 - 9.8 - 3/4" qtz & 2 veinlets
		12.2-12.4
		29.0 v'let
		33.1 1/2" v'let
		33.7 v'let
		34.6 thread
		( 36.2 Fault (?) at high angle to axis
		( core axis
		FAULT ( 36.8 - 36.9 Fault gouge & qtz str at
		( angle to core
		36.2 - 36.8 Sy. disturbed & sm. py.
		36.825 - 37.25 sy. v.s.m. py - two qtz veinlets
		Fault gouge excluded
		37.6 - 38.3; 37.6 - 37.9 is sy. s.m. py. - v.s.m. is qtz.

ASSAYS						
SAMPLE No.	FROM	TO	WIDTH Feet	VALUES		
				Gold oz/ton	Silver Dollars/Ton	Copper %
E 21	36.2	36.8	0.6	0.01	\$0.35	
E 22	36.8	37.25	0.45	0.01	0.35	
E 23	37.25	37.6	0.35	0.01	0.35	
E 24	37.6	38.3	0.7	0.01	0.35	

LEGEND	
<input type="checkbox"/> <input type="checkbox"/> <input type="checkbox"/> <input type="checkbox"/> <input type="checkbox"/> <input type="checkbox"/> <input type="checkbox"/> <input type="checkbox"/> <input type="checkbox"/> <input type="checkbox"/>	Collar Lat. .... Dep. .... Collar Elevation ..... Azimuth of Start ..... Azimuth at End ..... DIPS: ..... Ft. .... Ft. ..... Ft. .... Ft. ..... Ft. .... Ft. ..... Ft. .... Ft. Logged By ..... Sampling By ..... Assaying By .....

SECTIONS		
Started Oct. 25/60	Completed Oct. 26/60	Depth of Hole 205' Proposed Depth 205'

TPC

SIGNED











# DIAMOND DRILL RECORD

 PROPERTY INIGO MINES LTD  
Skond Twp.

 HOLE NO. E 1

DIP \_\_\_\_\_

LOCATION \_\_\_\_\_

 SHEET NO. 2

LOG		
FROM	TO	DESCRIPTION
		Continued....
97.3	196.6	Quartz: Veinlets at: 108.3; 113.0-113.15; 127.0-127.4; 142.0-143.1; 155.4-155.9 174.0 to 175.0 quartz with bluish streaks, probably Ho. v.s.n. fine py.
196.6	196.7	Aplite
196.7	273.3	Syenite as 3-93
		Quartz: 201.2-211.3 223.7 - 235.2 gtz (201.2-201.3) 229.3 - 231.7 232.3 - 235.5 275.0 - 275.2 - gtz - carb + some coarse feldspar.
273.3	273.7	Aplite. as 23-23.5 gtz blchs
		278.5 - 278.6. Veinlet at 278.0
273.7	595.0	Syenite as 3-93
		Quartz - 280.0 - 281.1; 281.2 - 291.3; v'let at 314.5 317.7 - 318.0 v.s.n. coarse cubic 321.3 - 322.8 325.7 - 325.75 carb w 2, 3/4" cubic aggreg of fine py. 329.1 - veinlet; 330.2 - 3/4" veinlet; 331.5 - 331.6; 332.4 - 3/4" veinlet

ASSAYS					
SAMPLE No.	FROM	TO	WIDTH feet	VALUES	
				gld oz/ton	platin oz/ton
E 5	174.0	175.0	1.0	0.07	2 1/2
E 38	174.0	175.0	1.0	0.10	350 (check)
E 6	317.7	318.0	0.3	0.09	3 1/2
E 7	321.3	322.8	1.5	Nil	Nil
E 31	326.7	325.9	0.7	0.119	5 9/16
E 32	235.0	235.3	0.3	Nil	Nil
E 41	278.7	280.4	0.7	0.01	0 3/16
E 42	332.6	335.0	0.4	Nil	Nil

SECTIONS			
Started	Completed	Depth of Hole	Proposed Depth

### LEGEND

- 
- 
- 
- 
- 
- 
- 
- 
- 
- 

Collar Lat. \_\_\_\_\_ Dep. \_\_\_\_\_  
 Collar Elevation \_\_\_\_\_  
 Azimuth at Start \_\_\_\_\_  
 Azimuth at End \_\_\_\_\_  
 DIPS:  
 \_\_\_\_\_ Ft. \_\_\_\_\_ Ft.  
 \_\_\_\_\_ Ft. \_\_\_\_\_ Ft.  
 \_\_\_\_\_ Ft. \_\_\_\_\_ Ft.  
 \_\_\_\_\_ Ft. \_\_\_\_\_ Ft.  
 Logged By \_\_\_\_\_  
 Sampling By \_\_\_\_\_  
 Assaying By \_\_\_\_\_

SCALE    Inch

# DIAMOND DRILL RECORD

 PROPERTY ELGO MINES LTD.

 HOLE NO. E 1

DIP \_\_\_\_\_

LOCATION \_\_\_\_\_

 SHEET NO. 3
Skood Twp.

LOG		
FROM	TO	DESCRIPTION
279.7	595.0	Continued:
		Quartz -
		335.3-336.0 2 fin; veinlets of fine
		339.0-339.4 Tr. py. Tr. Ho as blue
		color
		359.05-359.25 w 1/2" seam of fine py.
		383.6-383.8; 401.1- 1/2" str; 405.4-
		1/2" str; 412.5-1" qtz & silic in sy;
		421.0-421.25
		423.3-425.05 sy. gea somewhat silic.
		qtz str. to 1". qtz barren. Sy is v.
		py. tr. no. colour
		425.05-426.3 light col. sy., s.m., py.
		or 4 blebs or incipient veinlets qtz
		tr. no in one; also 1, 1/8" carb. str.
		426.3-427.3 Quartz, a little carb on
		lower cont.
		427.3-428.4 as E 12 but no tr Ho
		428.4-428.85 qtz w. 25" sy. of lower
		cont. ind.
		429.65 - 430.4 sy. w. qtz veinlets
		432.1-432.6 qtz sy. contacts incl.
		minor carb.
		445.1-445.6
		447.0 veinlet
		455.8-456.0
Note: At		462.8 a qtz veinlet and 1/2" possible

TPC

Consol. Fault gouge

ASSAYS						
SAMPLE No.	FROM	TO	WIDTH feet	VALUES		
				Gold oz/ton	Platina /ton	
E 8	335.3	336.0	0.7	0.10	3.82	
E 33	336.0	337.5	1.5	Nil	Nil	
E 34	337.5	337.0	1.5	Nil	Nil	
E 9	339.0	339.4	0.4	0.36	12.62	
E 35	339.4	340.0	0.6	0.045	0.12	
E 36	362.1	362.5	0.85	6.605	0.12	
E 10	369.05	369.25	0.20	0.67	24.15	
E 37	369.25	370.0	0.75	0.005	0.12	
E 43	340.0	342.5	2.5	0.005	0.12	
E 11	423.3	425.0	1.75	0.01	0.72	
E 12	425.05	426.3	1.25	0.01	0.35	
E 13	426.3	427.3	1.0	Nil	Nil	
E 14	427.3	428.4	1.1	0.01	0.35	
E 15	428.4	429.65	0.45	0.01	0.35	
E 16	429.65	430.4	0.75	Nil	Nil	
E 17	432.1	432.6	0.50	Nil	Nil	

### LEGEND

- 
- 
- 
- 
- 
- 
- 
- 
- 
- 

SCALE    Inch

Collar Lat. \_\_\_\_\_ Dep. \_\_\_\_\_

Collar Elevation \_\_\_\_\_

Asimuth at Start \_\_\_\_\_

Asimuth at End \_\_\_\_\_

DIPS:

\_\_\_\_\_ Ft. \_\_\_\_\_ Ft.

\_\_\_\_\_ Ft. \_\_\_\_\_ Ft.

\_\_\_\_\_ Ft. \_\_\_\_\_ Ft.

\_\_\_\_\_ Ft. \_\_\_\_\_ Ft.

Logged By \_\_\_\_\_

Sampling By \_\_\_\_\_

Assaying By \_\_\_\_\_

### SECTIONS

Started \_\_\_\_\_ Completed \_\_\_\_\_ Depth of Hole \_\_\_\_\_ Proposed Depth \_\_\_\_\_



# DIAMOND DRILL RECORD

PROPERTY ELGO MINES LTD.  
Skead Twp.

HOLE NO. E 3  
910' N of No. 2 post of Claim No. 44415

DIP 45°

LOCATION N 23°W Astro

Hole E 3  
SHEET NO. 1

LOG		
FROM	TO	DESCRIPTION
0	7	Casing
7.0	21.6	Syenite qtz str at 14.4 & 17.0
21.6	22.1	Aplitic f.g. qtz str at 21.4 & 21.8.
		Rock v.s.m. py. 21.4 - 22.1
22.1	29.5	Syenite qtz str at 24.2
25.5	25.7	Aplite dykelet
25.7	117.6	Syenite qtz str at 29.5, 61.7, 78.2 to 78.5 (barren) 84.8. 90.4-92.8 core lost-fished for- not recovered
117.6	126.7	Aplite f.g. dull brick pink-sharp upper cont. at angle, lower cont. indistinct.
		120.8-121.6 4" qtz & 2 v'lets incl. Tr. Fy. 121.6-122.0 Best min.soc.
		Aplite (s.m. py.)
126.7	224.0	Syenite. qtz str at 133.6 to 133.75; 145.3, 160.3, 161.5, 167.4 to 167.6, 169.1, 175.1  179.7 - 180.2 90% qtz w.py. on lower contact only. Note this in more basic sy. 180.2-181.2 Sy. W. one 3/4" qtz string & 2 veinlets Sy is v.s.m. py. 179.0-179.7 Sy W. one 1/2" qtz str. Sy vsm py 182.7-183.5 Sy. vsm py Qtz at 182.7 183.5-183.4. 1 cube py seen in qtz

TPC

ASSAYS						
SAMPLE No.	FROM	TO	WIDTH Foot	VALUES		
				Gold oz/Ton	Dollars /Tn	Grms
E 49	21.4	22.1	0.7	0.03	\$1.05	
E 50	120.8	121.6	0.8	0.22	7.70	
E 51	121.6	122.0	0.4	N1	N1	
E 52	179.7	180.2	0.5	0.01	0.35	
E 53	180.2	181.2	1.0	N1	N1	
E 54	179.0	179.7	0.7	N1	N1	
E 55	182.7	183.7	1.0	0.05	1.75	

LEGEND	
<input type="checkbox"/>	Cellar Lot. .... Dep. ....
<input type="checkbox"/>	Cellar Elevation .....
<input type="checkbox"/>	Azimuth at Start .....
<input type="checkbox"/>	Azimuth at End .....
<input type="checkbox"/>	DPS:
<input type="checkbox"/>	..... Ft. .... Ft.
<input type="checkbox"/>	..... Ft. .... Ft.
<input type="checkbox"/>	..... Ft. .... Ft.
<input type="checkbox"/>	..... Ft. .... Ft.
<input type="checkbox"/>	Logged By .....
<input type="checkbox"/>	Sampling By .....
<input type="checkbox"/>	Assaying By .....

SCALE 0

Inch

SECTIONS		
Started Oct. 26/60	Completed Oct. 30/60	Depth of Hole 454'
Proposed Depth 440'		









