



CAIRO-FLAVELLE TOWNSHIP CLAIMS

MONTREAL RIVER MINING DIVISION - PROVINCE OF ONTARIO

A group of 65 claims were staked in Cairo and Flavelle Townships for the purpose of investigating structural conditions interpreted from an aeromagnetic survey performed by the Dominion Gulf Company in 1949.

The ground magnetometer survey was required to provide detailed information necessary for the extension of observed geological features. This information will later be used in the interpretation of the area and preparation of structural maps.

The ground magnetometer survey was performed by members of two Dominion Gulf Company geophysical parties during the month of October 1951. The first party consisted of Messrs. R. Hodgins and R. McDonald, and the second, Messrs. E. Miller and J. French. Both parties worked under the supervision of Mr. B. Middleton (Geophysicist).

Measurements were made at intervals of 100 feet along profiles spaced 400 feet apart. Additional readings were made where severe gradients or anomalous values were encountered. A total of 2775 observations were made along 48.4 miles of profile. Schmidt Balance type Askania Magnetometers were used in making these measurements. The sensitivity settings of the instruments were approximately 15 gamma per scale division.

A contoured map of the magnetometer data was prepared in the offices of the Dominion Gulf Company. The scale of this map is 400 feet per inch and it will be used with the geological map of the area to:

- (a) Outline the contacts of the massive syenites to the north.
- (b) Delineate a major zone of shearing and any cross structure affecting this zone.

The most favourable parts of this major shear zone will be investigated by diamond drilling.

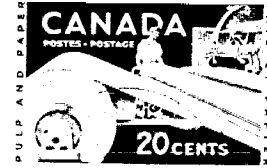
D. Torrens.

/IT:


900



41P15NE8368 63.263 CAIRO



Mining Recorder, Elk Lake, Ont.


 ONTARIO

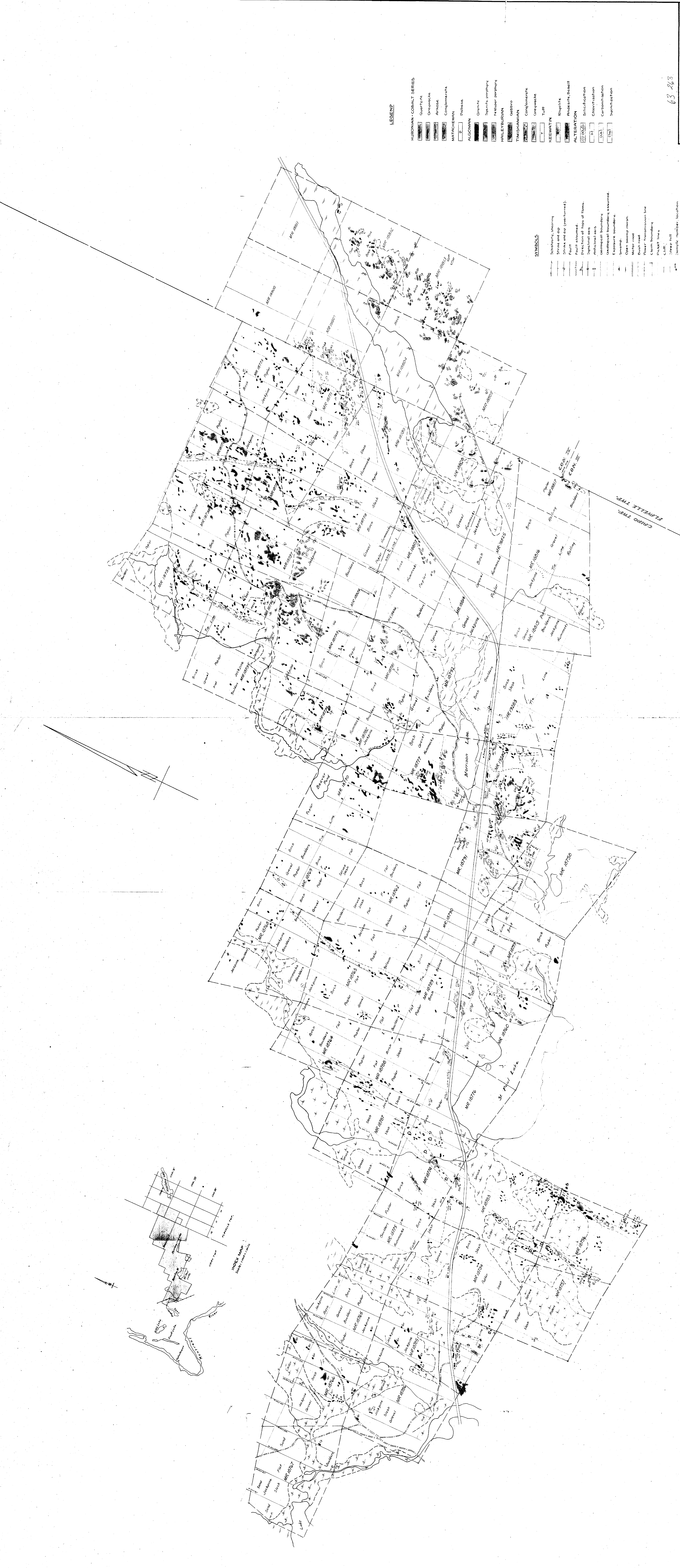
From the
 DEPARTMENT
 of
 MINES

RETURN
 at Point
 of Mailing

Mining Lands Branch,
 Department of Mines,
 Parliament Buildings,
 Toronto 2, Ontario.

25M-57-145

Ketter Kate



63-263

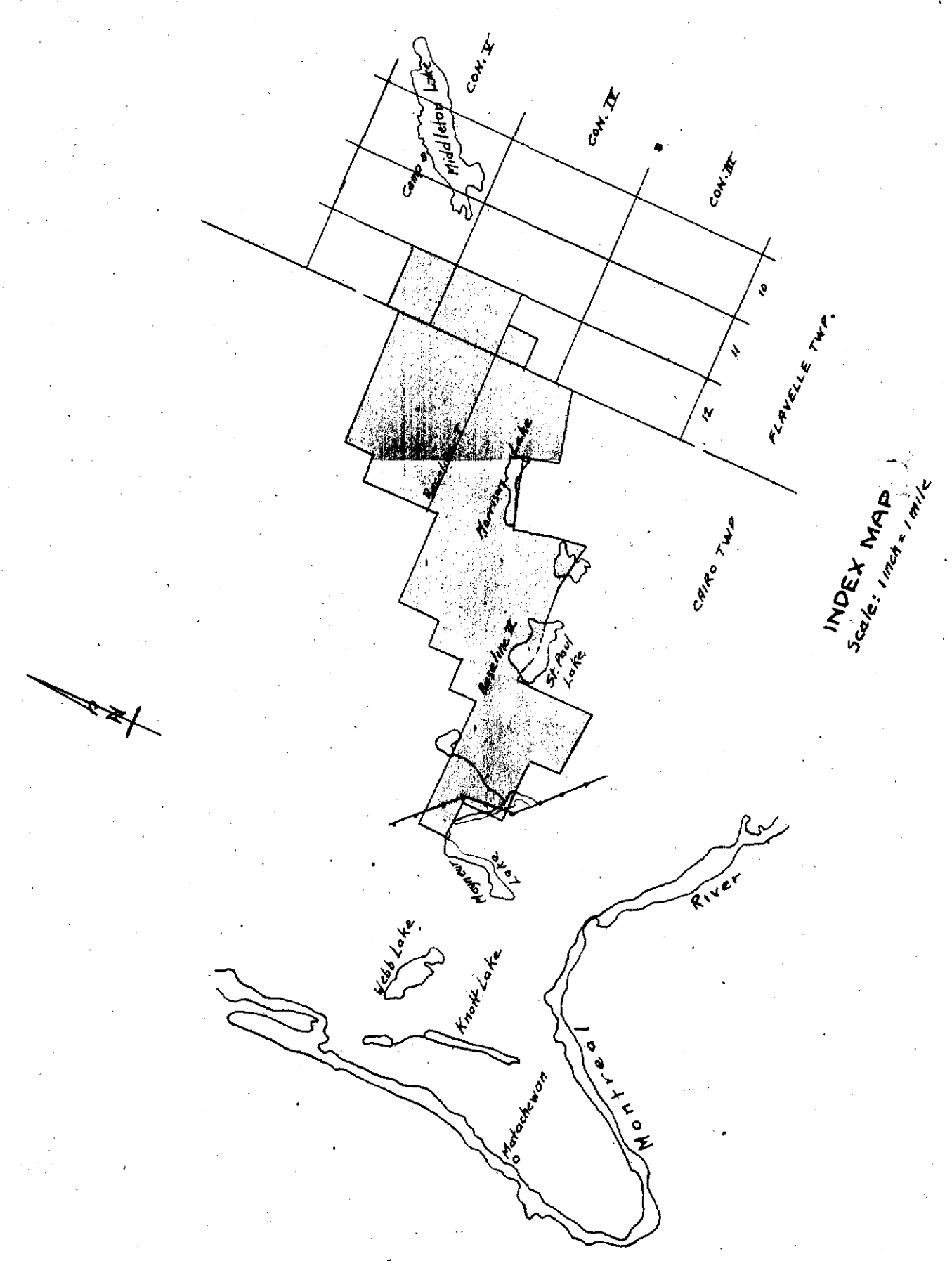
DOMINION GULF COMPANY
 GEOLOGICAL PLAN
CAIRO-FLAVELLE TWP. CLAIMS
 GROUP I
 CAIRO & FLAVELLE TWP., PROV. OF ONT.
 SCALE: 1"=400'
 OCT. 30, 1981
 C.P. #123048

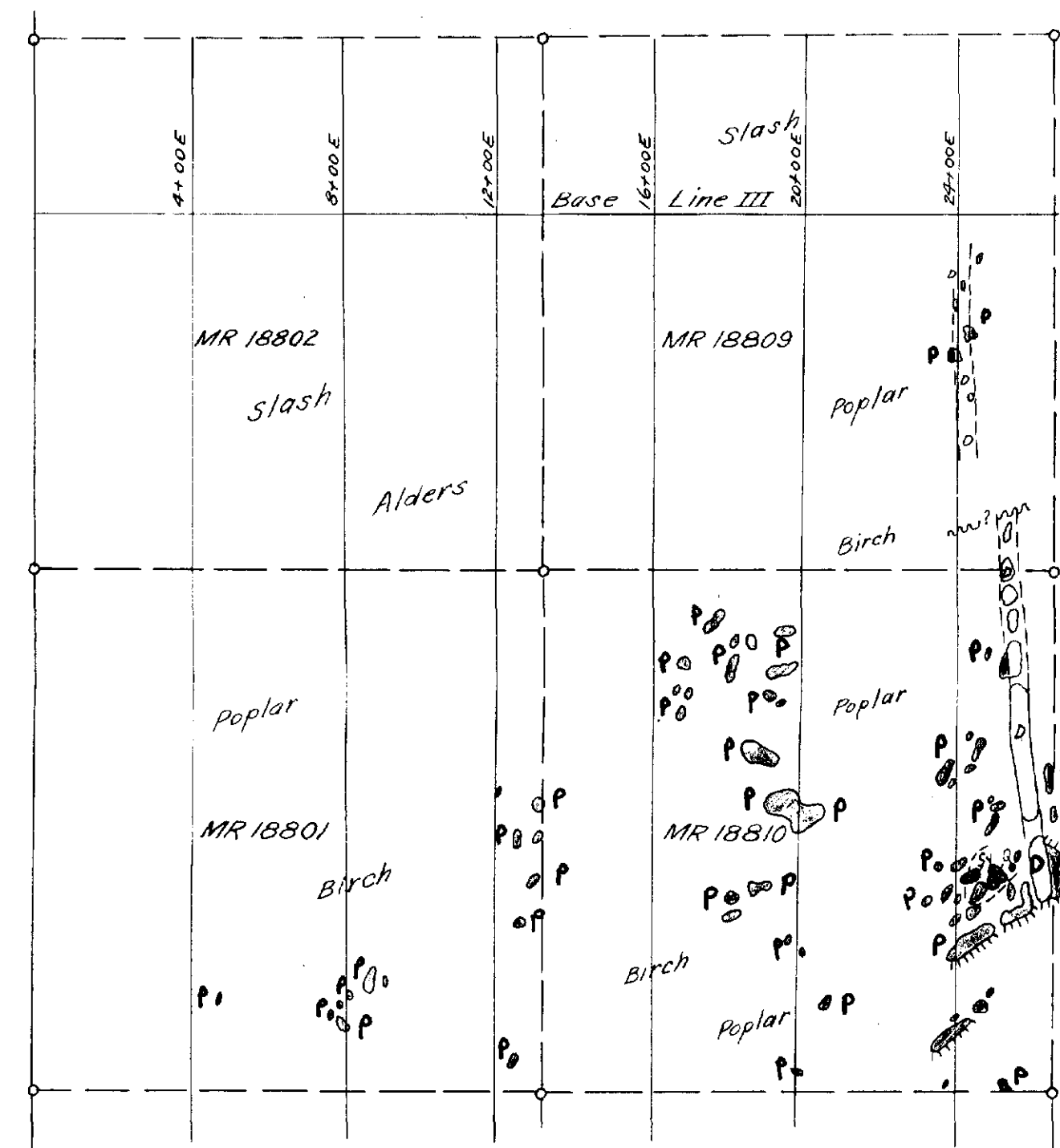
LEGEND

- HURONIAN-COBRALT SERIES
- Quartzite
 - Gneiss
 - Amphibole
 - Comglomerate
 - MAFICHEWEN
 - Algonquin
 - Palouse
 - Greenite
 - Syenite porphyry
 - Felsite porphyry
 - HILLYBURIAN
 - OSBRO
 - TIMISKAMIAN
 - Comglomerate
 - Gneiss
 - Tuff
- KEEWATIN
- Rhyolite
 - Andesite basalt
- ALTERATION
- Silicification
 - Chloritization
 - Carbonatization
 - Serpentinization

SYMBOLS

- Shaded, hatched
- Strike and dip (over fence)
- Fault assumed
- Direction of top of blow
- Artificial pits
- Unassessed boundary assumed
- Assessed boundary
- Section boundary
- Open swamp marsh
- Motor road
- Brush road
- Power transmission line
- Claim boundary
- Water hole
- Shrub hill
- Sample number location





LEGEND

MATACHEWAN

D Diabase

ALGOMAN

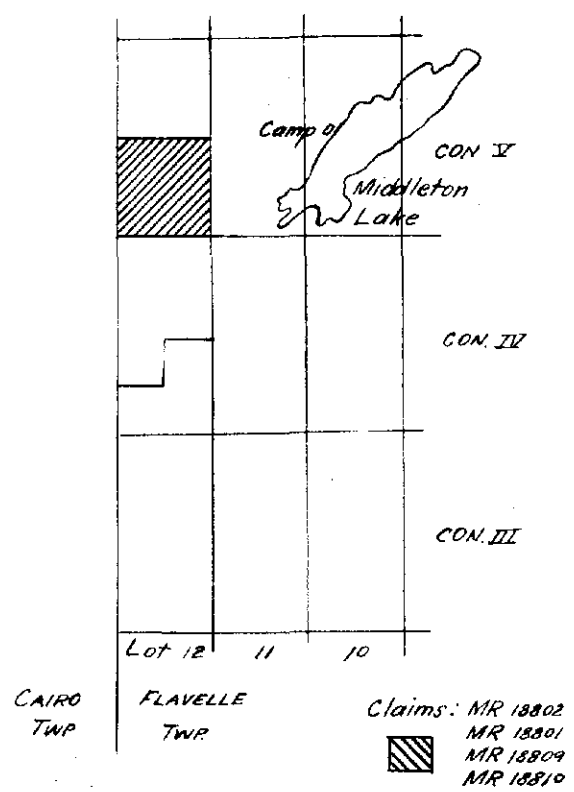
P Syenite porphyry

KEEWATIN

B Basalt

ALTERATION

(Sy) Syenitized



LOCATION MAP
Scale: 1 inch = 1 mile

63.263

DOMINION GULF COMPANY
GEOLOGICAL PLAN
PART OF
CAIRO-FLAVELLE CLAIMS
GROUP I

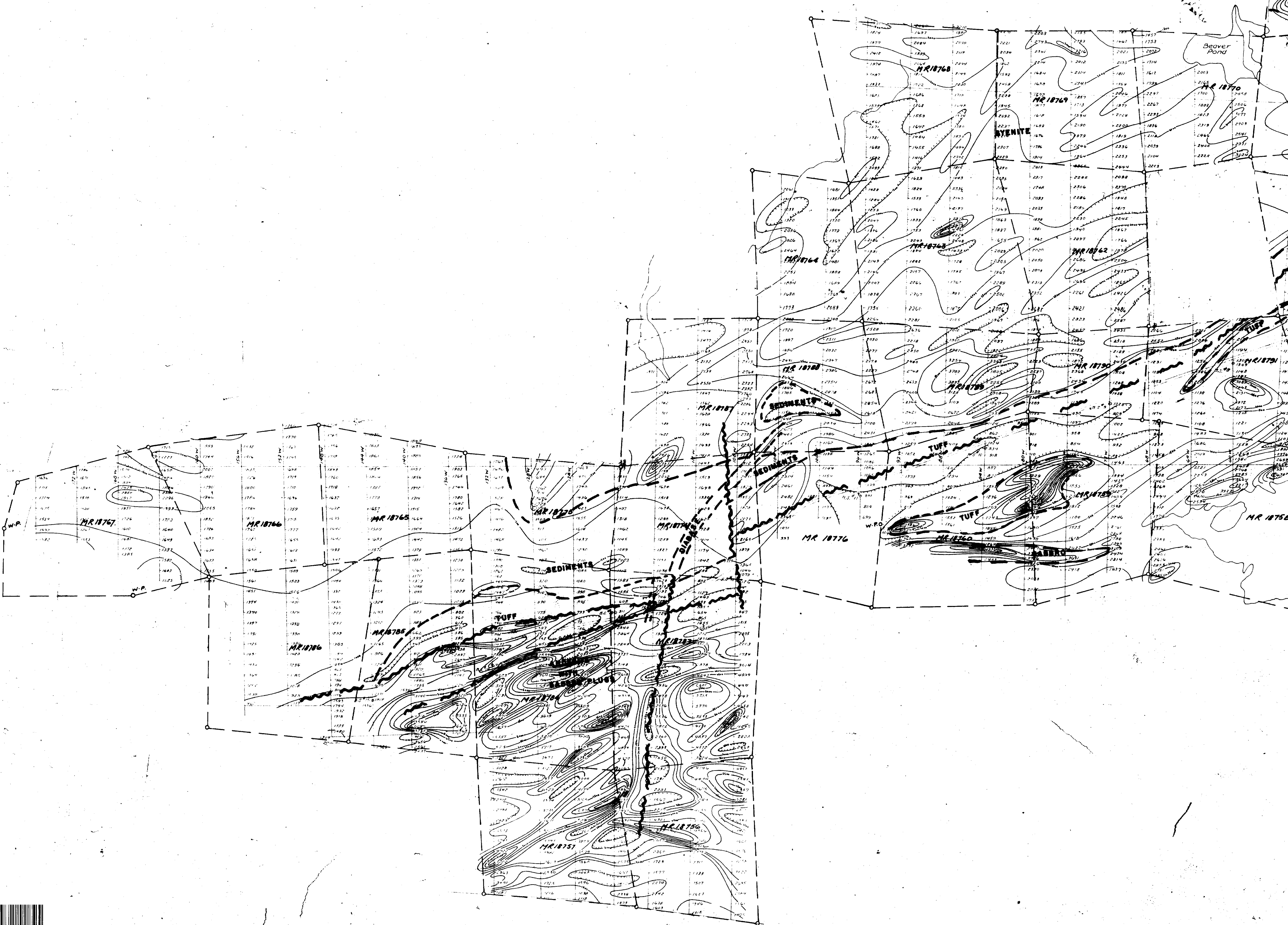
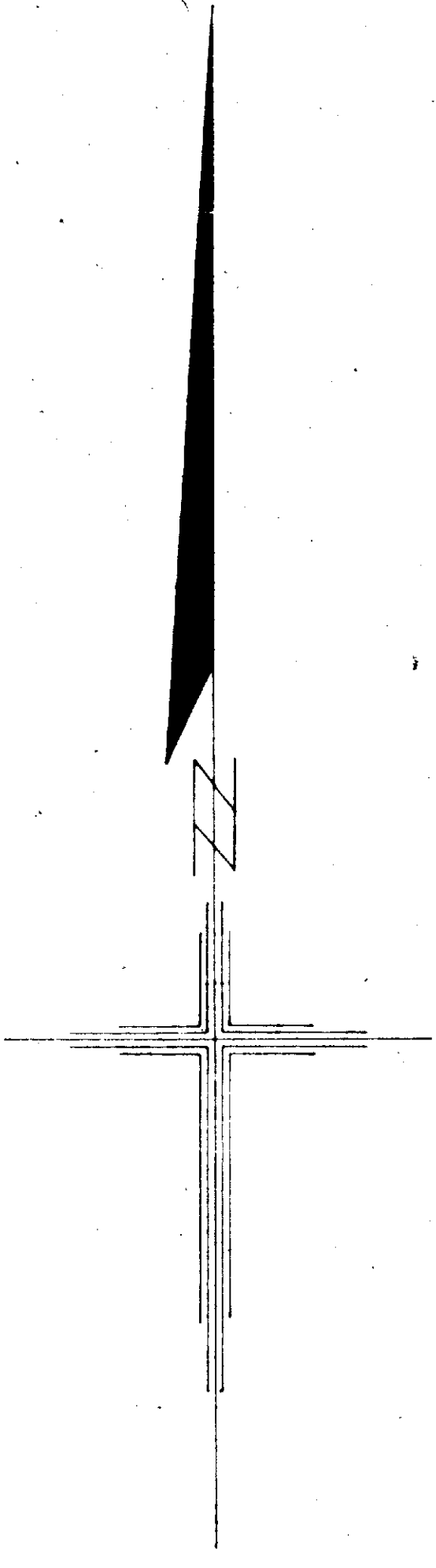
FLAVELLE TWP - PROV. OF ONT.

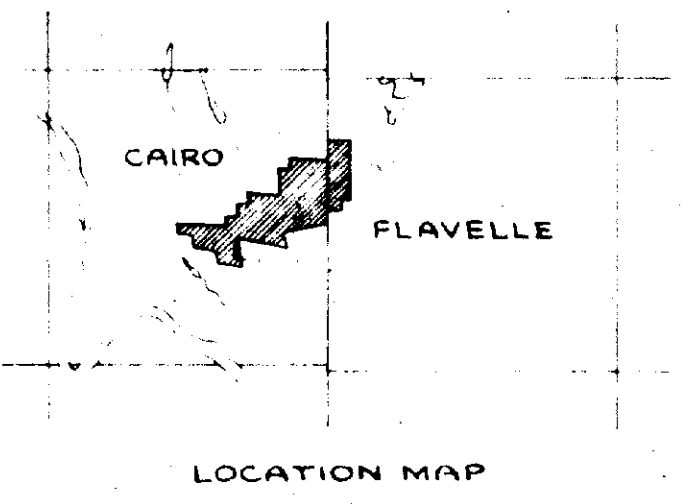
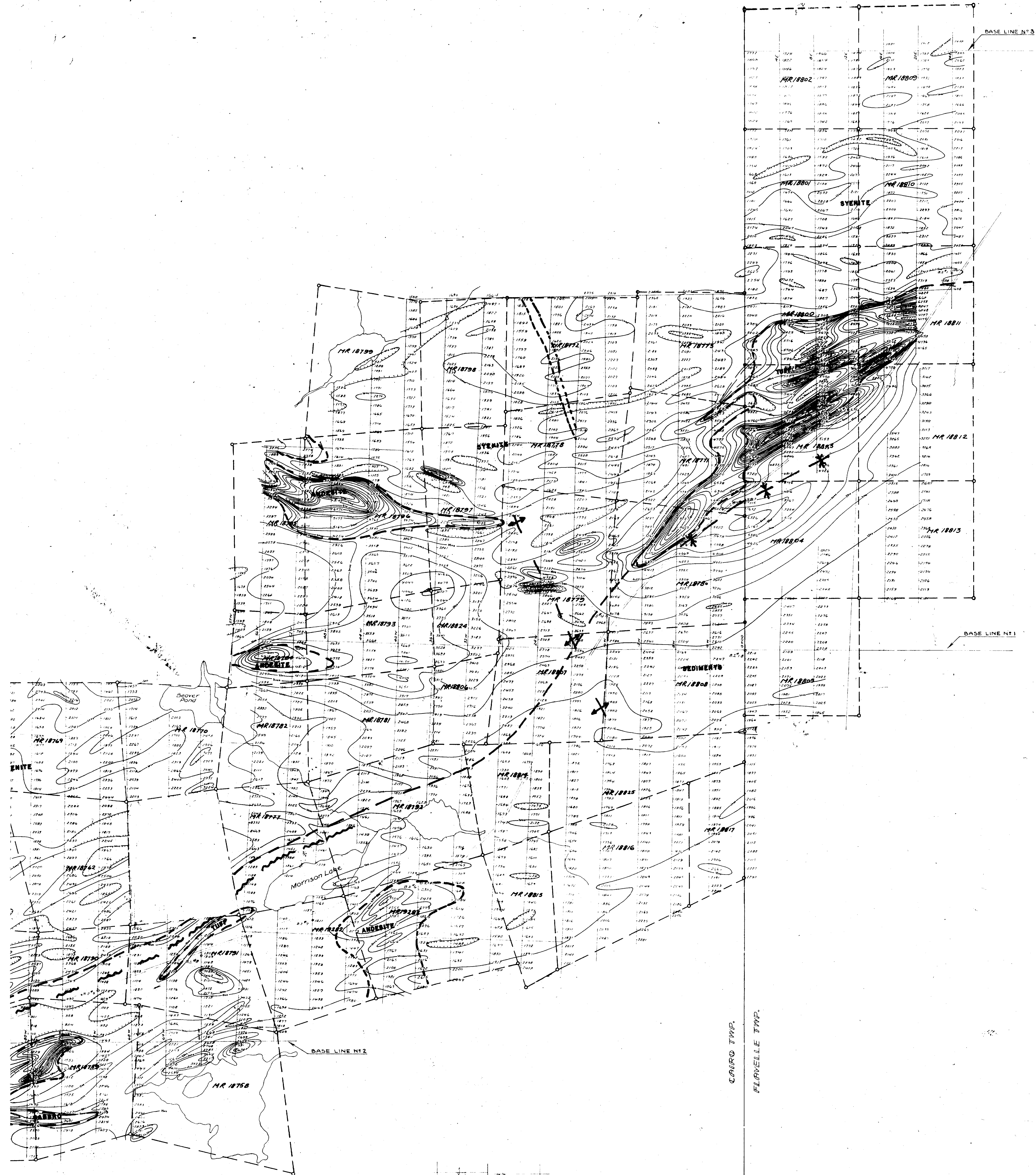
SCALE: 1" = 400'

JUNE 16, 1952.

H. B. Vos.







LEGEND
 - - - - - Interpreted contact.
 - - - - - Interpreted fault.

63.265
 DOMINION GULF COMPANY
 GROUND MAGNETOMETER SURVEY
 CAIRO - FLAVELLE TWP. CLS.
 GROUP I
 CAIRO & FLAVELLE TWP. - PROV. OF ONT.
 SCALE: 1" = 400' DATE: DEC. 20, 1951