

Report on Exploration
September & October, 2009

MISSING LINK EXTENSION
PROPERTY

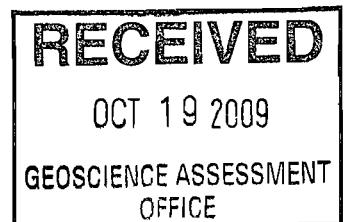
Lapierre Lake Area

2 • 4 2 9 2 0

Beardmore-Jellicoe Area
Thunder Bay Mining Division

NTS 42E/14

Lat. 49° 45' N, Long. 87° 30' W



Prepared by
Ted Cox
October 12, 2009

SUMMARY

In the September of 2009, Myron Nelson, carried out a stripping/trenching program in the Beardmore-Jellicoe area, north-western Ontario.

The primary goal of the program was to investigate a conductive mag high recognized by a recent airborne geophysical survey which was done by Kodiak Explorations.

LOCATION & ACCESS

The claims are located approximately 7 km. north-east of Jellicoe, NW Ontario. Access is afforded via road, along Highway 11, 6 km east of Jellicoe to the Kinghorn Road, thereafter, north along the all-weather road to km 7, then west along a bush road for 3 km.

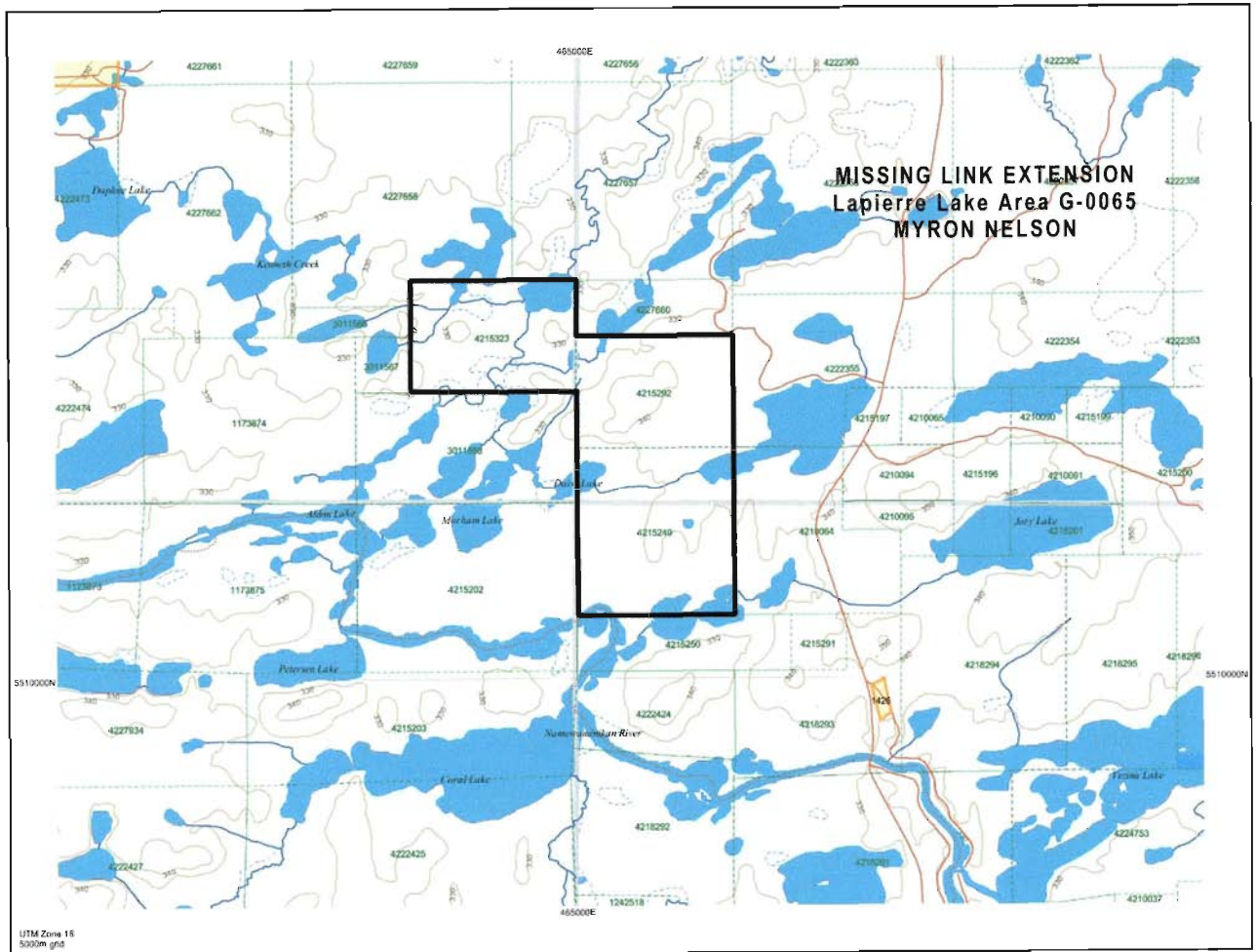
Location Map. X is approximate location



CLAIMS

The area under investigation consists of 3 contiguous mining claims (21 units), numbered 4215249, 4215292 and 4215323.

Property Map



HISTORY

The first geological investigations in the area were completed by members of the Geological Survey of Canada during the period 1884-1901. Mapping was done by R. Bell, W. McInnes, D.B. Dowling and A.W. Parks. Staff of the Ontario Bureau of Mines investigated the iron ore potential in 1907. In 1936 E.L. Bruce and A. C. Laird completed a mapping project over the Sturgeon River area. Specific township mapping was conducted by the Ontario Department of Mines in the Beardmore area in the late 1970's (Mackasey, 1978).

Prospectors and exploration companies have been active in the area since the early 1900's. The focus has been on quartz vein-hosted gold deposits as well as Cu-Zn sulphide deposits. Minor gold production is recorded for the Dik-Dik mine during the period 1934-35 (2,460 oz gold).

Holt, Nelson & Savage did limited trenching in the area of claim 4215323 in 1999.

Successive companies explored the Missing Link group to the south-east, but there is no record of them investigating these specific three claims.

REGIONAL GEOLOGY

Geology of the Lapierre Lake Area, District of Thunder Bay By D. Kresz 1991

This report describes the geology, mineralization and mineral exploration of the Lapierre Lake area which covers an area of 230 km east of Lake Nipigon.

The Precambrian bedrock underlying the map area consists mainly of metamorphosed volcanic rocks and their intrusive equivalents and granitic rocks forming part of the eastern Wabigoon Sub-province within the Archean Superior Province of the Canadian Shield.

The metavolcanic rocks are part of a greenstone belt composed of mafic and intermediate to felsic volcanic rocks.

The mafic volcanic rocks form a lower sequence of massive to pillowed tholeiitic basalt flows in Lapierre and southern Hipel townships. A thin horizon of interflow banded iron formation in the northern part of the map area serves as an excellent stratigraphic marker. Concordant units of metagabbro represent synvolcanic sills.

The lower mafic sequence is conformably overlain by an upper intermediate to felsic calc-alkalic assemblage which broadens to the west. In the map area, this assemblage consists of massive, amygdaloidal andesite flow units which are intercalated with pyroclastic lapilli tuff. Synvolcanic intrusive rocks are represented by a subvolcanic plagioclase porphyry stock in central Lapierre Township and by porphyritic dikes.

The granitic rocks that bound the Archean supracrustal assemblage in the northern part of the map area belong to the southern margin of the Onaman-Twin Lakes batholith. Two main granitic phases of syn- to late tectonic emplacement have been recognized in the map area: 1) a massive to foliated tonalitic phase north of Lapierre Township, and a crosscutting pluton of massive megacrystic granodiorite

forming a wide lobe underlying much of Hipel Township. North-trending diabase dikes of Proterozoic age cross cut all Archean rock units.

Unconsolidated glacial sediments represented by till and glaciofluvial sediments deposited during the last glaciation, blanket the peneplained Precambrian shield. The greenstone assemblage has been deformed by a folding event that accompanied granitic plutonism during the so called "Kenoran Orogeny". In the map area, the Archean supracrustal rock units have been folded into a westerly plunging syncline. Strata have steep to vertical dips and rocks have acquired a penetrative east to northeasterly metamorphic foliation which in most cases is layer parallel.

Along the southern boundary of the map area, rocks, in places, have been strongly deformed by shearing related to the Paint Lake fault, a major tectonic structure marking the boundary with the Beardmore-Geraldton belt to the south.

The Archean supracrustal rocks in the map area have been metamorphosed to greenschist and lower amphibolite mineral assemblages with an increase in metamorphic grade towards the granitic batholith.

The map area, situated in the eastern part of the "Sturgeon River Gold Belt" has been prospected for gold since the early 1930's and, later, for base metals. Gold mineralization in the region has been found in quartz veins filling tension fractures such as at the former Orphan Mine in eastern Rickaby Township.

In southern Lapierre Township, gold is associated with quartz-ankerite vein systems hosted by sheared and hydrothermally altered metavolcanic rocks. The latter type of mineralization is related to shearing along the Paint Lake fault. Minor chalcopyrite and molybdenite mineralization has been found in quartz veins. Strong electromagnetic conductors associated with metavolcanic rocks in southern Lapierre Township and with iron formation in the northern part of the map area have been found to be caused by iron sulphides.

PROJECT RESULTS

In September, 2009, an exploration program was completed on claims held by Myron Nelson.

On Oct 3, 09 the author was requested by the recorded holder, to perform a reconnaissance VLF ground survey over a conductive, high mag signature recognized from a recent regional airborne survey. The geophysical anomaly intersects the recorded holder's claim at a shallow east/west angle. After a day of north - south traversing with an EM-16, a strong tabular conductor was located utilizing the Cutler Maine station. The strike of the conductor was flagged, and mechanical stripping could commence along the flags the following day.

The property is underlain by volcanics, and metavolcanics. Stripping has uncovered a strongly sheared, sulphide dominated, metavolcanic zone. At its widest, strong mineralization and oxidization appears to be in excess of 10 meters. Sulphides within the zone consist mainly of semi-massive "flowery" pyrite, with massive pyrite/pyrrhotite concentrations. Sulphide mineralization is observed lineated to the shear axis of 80 degrees, with a sub-vertical to steep southerly dip.

Two stripped areas were mapped by the author totalling approximately 650 sq meters. The eastern strip was channel sampled across the shear and conductive axis. The channel was divided into 16 measured samples from .3 m to 1 m representations. Four grab sample locations were also noted in this exposure.

Only a north-south excavator road separates this strip from the western stripped area. In this exposure the mineralized zone appears less oxidized, resulting in an absence of gossan and shear deterioration. Seven grab sample locations were mapped from the eastern side of the strip: six samples representing more sulphide rich material and one sample representing a 4 cm wide quartz vein.

The stripping was carried out by Thorcox Excavating Ltd. of Beardmore, operator David Kindla, Beardmore and supervised by Myron Nelson of Beardmore. Washing and sawing was done by Thorcox Excavating staff, Ron Kasprick and Delphis Veilleux, both of Beardmore. Sampling was done by Myron Nelson. Reconnaissance VLF and mapping was done by the author. Assays were sent to Accurassay, Thunder Bay. Results were not available at report time.

Assay Results

Missing Link Extension

		Au g/t
09-MNML- Grab	621	0.019
	622	0.008
	623	0.007
	624	0.011
09-MNML- Channel	653	0.049
	654	0.006
	655	<0.005
	656	<0.005
	657	<0.005
	658	0.005
	659	0.006
	660	<0.005
	661	<0.005
	662	<0.005, 0.009
	663	<0.005
	664	<0.005
	665	<0.005
	666	<0.005
667	<0.005	
668	<0.005	
09-MNML- Grab	688	0.056
	689	0.018
	690	0.006
	691	0.018, 0.021
	692	0.038
	693	0.075
	708	0.008

Certificate of Analysis

Wednesday, October 28, 2009

 Sage Gold Inc.
 Suite 500, 365 Bay St.
 Toronto, ON, CAN
 M5H2V1
 Ph#: (416) 204-3170
 Fax#: (416) 260-2243
 Email#: wlove@sagegoldinc.com,
 rtherriault@geologistforhire.com

Date Received: 10/06/2009

Date Completed: 10/28/2009

Job #: 200942683

Reference:

 Sample #: 20
 Channel

Acc #	Client ID	Au ppb	Au oz/t	Au g/t (ppm)
183816	09MNS607	3649	0.106	3.649
183817	09MNS608	8222	0.240	8.222
183818	09MNS609	2803	0.082	2.803
183819	09MNS610	366	0.011	0.366
183820	09MNS611	104	0.003	0.104
183821	09MNS612	811	0.024	0.811
183822	09MNS613	406	0.012	0.406
183823	09MNS614	50	0.001	0.050
183824	09MNS615	29	<0.001	0.029
183825	09MNS616	427	0.012	0.427
183826	09MNS617	94	0.003	0.094
183827 Dup	09MNS617	92	0.003	0.092
183828	09MNS618	572	0.017	0.572
183829	09MNS619	166	0.005	0.166
183830	09MNS620	102	0.003	0.102
183831	09MNML621	19	<0.001	0.019
183832	09MNML622	8	<0.001	0.008
183833	09MNML623	7	<0.001	0.007
183834	09MNML624	11	<0.001	0.011
183835	09MNS651	140	0.004	0.140
183836	09MNS652	367	0.011	0.367

Certificate of Analysis

Wednesday, October 28, 2009

Sage Gold Inc.
Suite 500, 365 Bay St.
Toronto, ON, CAN
M5H2V1
Ph#: (416) 204-3170
Fax#: (416) 260-2243
Email#: wlove@sagegoldinc.com,
rtherriault@geologistforhire.com

Date Received: 10/06/2009

Date Completed: 10/28/2009

Job #: 200942683


Reference:

Sample #: 20
Channel

Acc #	Client ID	Au ppb	Au oz/t	Au g/t (ppm)
-------	-----------	-----------	------------	-----------------

PROCEDURE CODES:

Certified By:



Derek Demianuk M.Bsc., Laboratory Manager

The results included on this report relate only to the items tested
The Certificate of Analysis should not be reproduced except in full, without the written approval of the laboratory

AL903-0384-10/28/2009 9:55 AM

Certificate of Analysis

Tuesday, October 27, 2009

 Sage Gold Inc.
 Suite 500, 365 Bay St.
 Toronto, ON, CAN
 M5H2V1
 Ph#: (416) 204-3170
 Fax#: (416) 260-2243
 Email#: wlove@sagegoldinc.com,
 rtherriault@geologistforhire.com

Date Received: 10/07/2009

Date Completed: 10/27/2009

Job #: 200942577

Reference:

 Sample #: 16
 Channel

Acc #	Client ID	Au ppb	Au oz/t	Au g/t (ppm)
176341	09MNML653	49	0.001	0.049
176342	09MNML654	6	<0.001	0.006
176343	09MNML655	<5	<0.001	<0.005
176344	09MNML656	<5	<0.001	<0.005
176345	09MNML657	<5	<0.001	<0.005
176346	09MNML658	5	<0.001	0.005
176347	09MNML659	6	<0.001	0.006
176348	09MNML660	<5	<0.001	<0.005
176349	09MNML661	<5	<0.001	<0.005
176350	09MNML662	<5	<0.001	<0.005
176351 Dup	09MNML662	9	<0.001	0.009
176352	09MNML663	<5	<0.001	<0.005
176353	09MNML664	<5	<0.001	<0.005
176354	09MNML665	<5	<0.001	<0.005
176355	09MNML666	<5	<0.001	<0.005
176356	09MNML667	<5	<0.001	<0.005
176357	09MNML668	<5	<0.001	<0.005

Certificate of Analysis

Tuesday, October 27, 2009

 Sage Gold Inc.
 Suite 500, 365 Bay St.
 Toronto, ON, CAN
 M5H2V1
 Ph#: (416) 204-3170
 Fax#: (416) 260-2243
 Email#: wlove@sagegoldinc.com,
 rtherriault@geologistforhire.com

Date Received: 10/07/2009

Date Completed: 10/27/2009

Job #: 200942577

Reference:

 Sample #: 16
 Channel

Acc #	Client ID	Au ppb	Au oz/t	Au g/t (ppm)
-------	-----------	-----------	------------	-----------------

PROCEDURE CODES: ALFA1

Certified By:



Derek Demianuk M.Bsc., Laboratory Manager

The results included on this report relate only to the items tested
 The Certificate of Analysis should not be reproduced except in full, without the written approval of the laboratory

AL903-0384-10/27/2009 12:26 PM

Certificate of Analysis

Tuesday, October 27, 2009

 Sage Gold Inc.
 Suite 500, 365 Bay St.
 Toronto, ON, CAN
 M5H2V1

Ph#: (416) 204-3170

Fax#: (416) 260-2243

Email#: wlove@sagegoldinc.com, rtherriault@geologistforhire.com

Date Received: 10/07/2009

Date Completed: 10/27/2009

Job #: 200942576

Reference:

Sample #: 6 Rock

Acc #	Client ID	Au ppb	Au oz/t	Au g/t (ppm)
176334	09MNML688	56	0.002	0.056
176335	09MNML689	18	<0.001	0.018
176336	09MNML690	6	<0.001	0.006
176337	09MNML691	18	<0.001	0.018
176338 Dup	09MNML691	21	<0.001	0.021
176339	09MNML692	38	0.001	0.038
176340	09MNML693	75	0.002	0.075

PROCEDURE CODES: ALFA1

Certified By:



Derek Demianiuk H.Bsc., Laboratory Manager

The results included on this report relate only to the items tested

The Certificate of Analysis should not be reproduced except in full, without the written approval of the laboratory

AL903-0384-10/27/2009 12:28 PM

Certificate of Analysis

Monday, November 9, 2009

 Sage Gold Inc.
 Suite 500, 365 Bay St.
 Toronto, ON, CAN
 M5H2V1

Ph#: (416) 204-3170

Fax#: (416) 260-2243

Email#: wlove@sagegoldinc.com, rtherriault@geologistforhire.com

Date Received: 10/14/2009

Date Completed: 11/09/2009

Job #: 200942629


Reference:

Sample #: 15 Rock

Acc #	Client ID	Au ppb	Au oz/t	Au g/t (ppm)
180240	09MNS694	75	0.002	0.075
180241	09MNS695	54	0.002	0.054
180242	09MNS696	126	0.004	0.126
180243	09MNS697	231	0.007	0.231
180244	09MNS698	580	0.017	0.580
180245 Dup	09MNS698	571	0.017	0.571
180246	09MNS699	558	0.016	0.558
180247	09MNS700	117	0.003	0.117
180248	09MNS701	27	<0.001	0.027
180249	09MNS702	23	<0.001	0.023
180250	09MNS703	74	0.002	0.074
180251	09MNS704	393	0.011	0.393
180252	09MNS705	478	0.014	0.478
180253	09MNS706	50	0.001	0.050
180254	09MNS707	421	0.012	0.421
180255	09MNML708	8	<0.001	0.008

PROCEDURE CODES: ALFA1

Certified By:



Derek Demianuk H.Bsc., Laboratory Manager

The results included on this report relate only to the items tested

The Certificate of Analysis should not be reproduced except in full, without the written approval of the laboratory

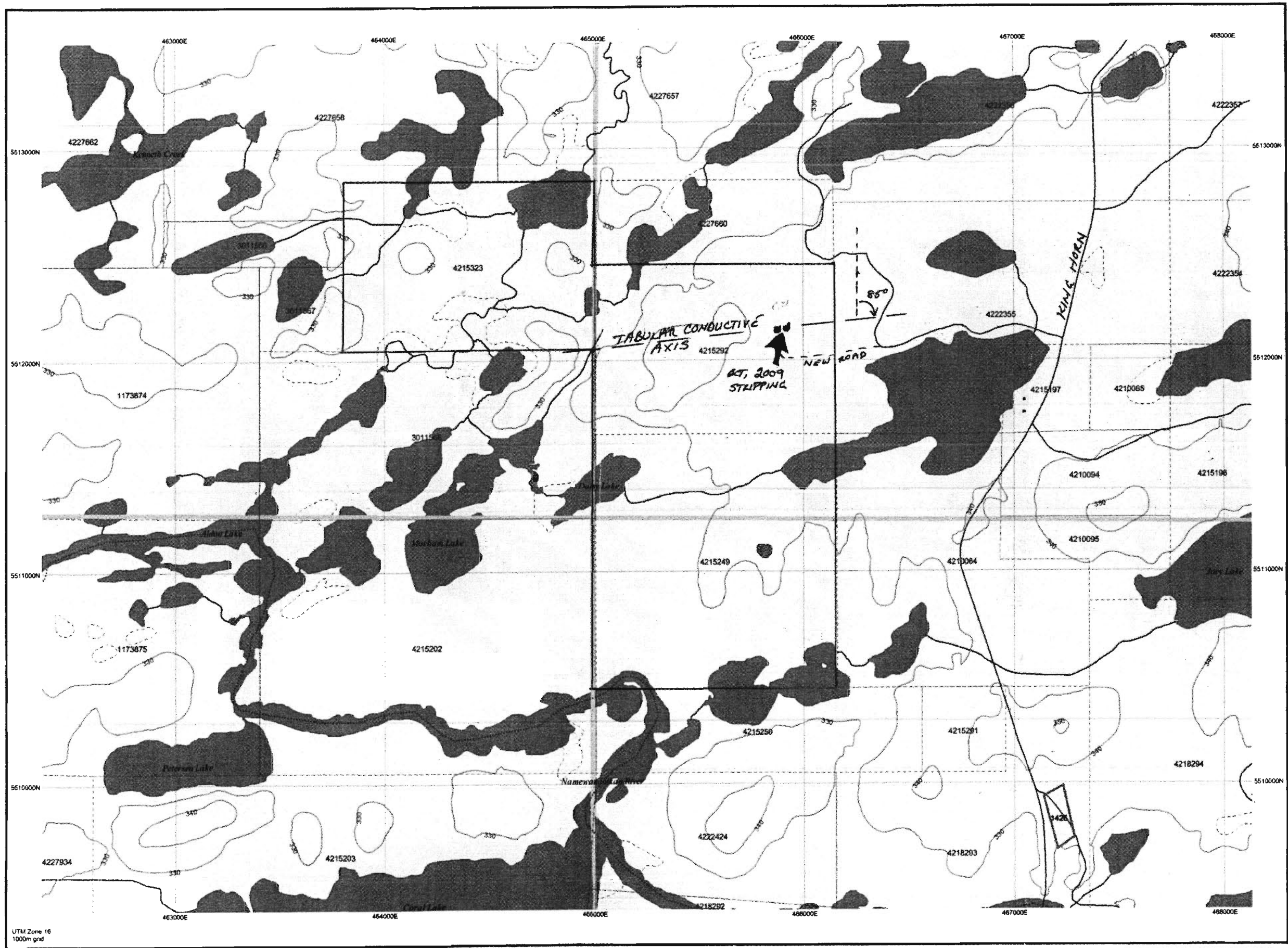
AL903-0384-11/09/2009 1:19 PM

AUTHOR QUALIFICATIONS

I, Ted Cox, do hereby qualify as follows:

- 1) That I am an independent geological/geophysical technician, and that I reside at 357 Garnet Drive, Beardmore, Ontario.
- 2) That I am a graduate of Cambrian Collage, Sudbury, Ontario 2000, with a Geological Engineering Degree. This course included geophysical theory, Geophysical Field Camp and Geophysical Interpretation.
- 3) That I have been practicing my profession in mineral exploration since 1994.
- 3) That I have completed the work described in this report, completed the additional maps and am the responsible author of this report's contents.

October 12, 2009.......... Ted Cox.



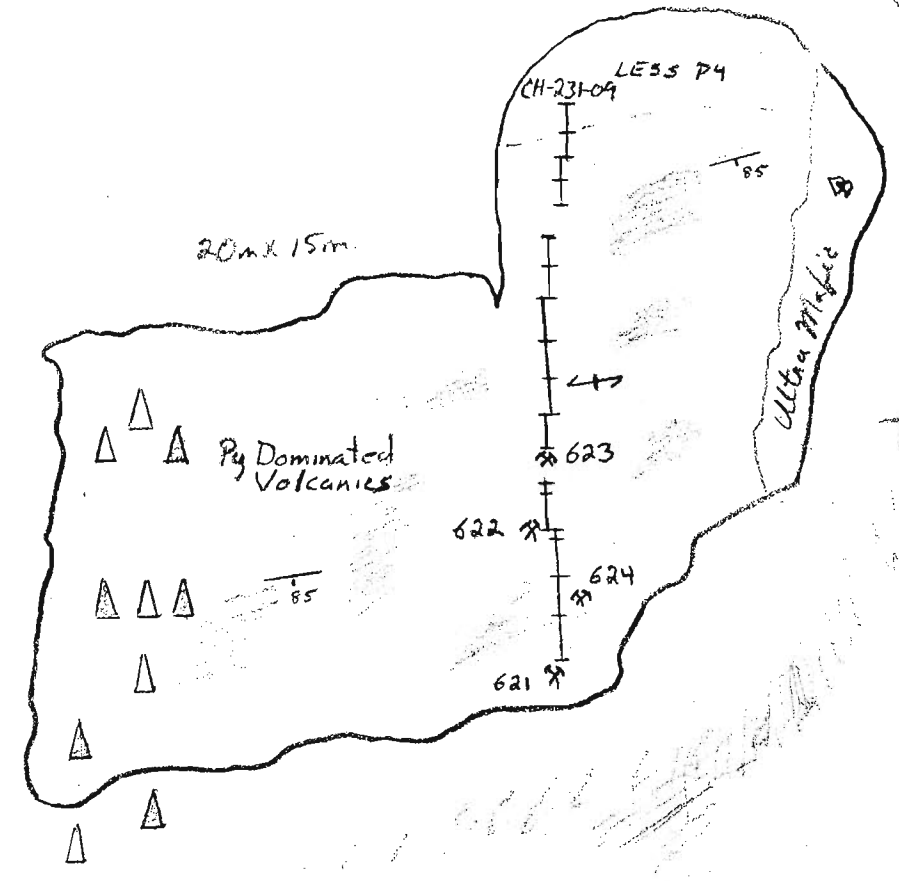
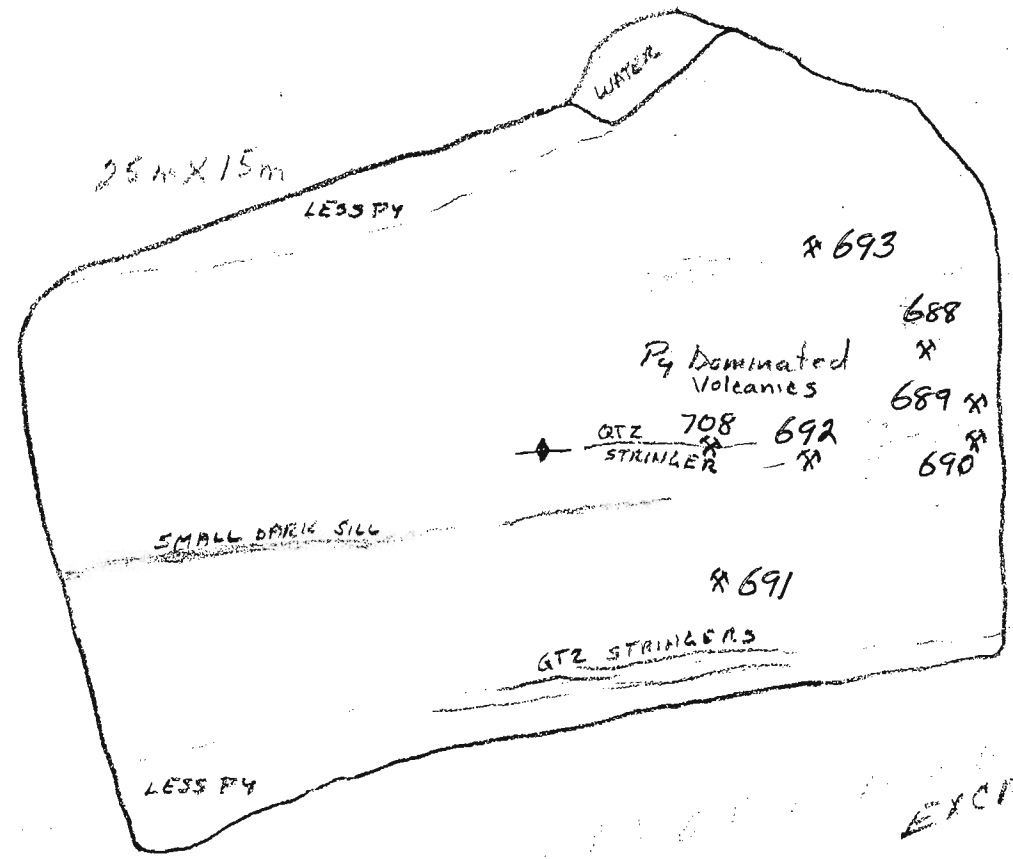
UTM Zone 16
1000m grid

Fall, 2009
 Missing Link Extension
 M. Nelson Property
 STRIPPING/STRUCTURE/SAMPLE MAP
 CLAIM 4215292
 INC. VLF EM-16 RECON

Draft, VLF Survey
 Field Data Comp.
 By: T. Cox
 Occupation, Sampling
 : D. KINDLA
 By: M. NELSON
 : D. VELIEXU

Legend

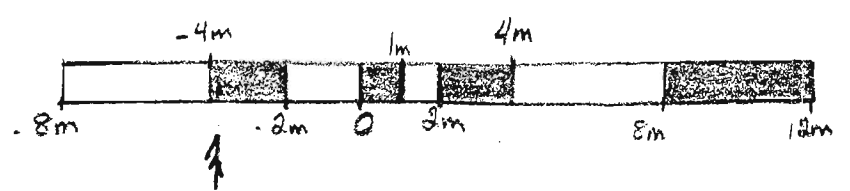
- STRIPPED AREA
- BEDDING
- STRIKE/DIP VEIN
- FOLIATION (Py LINIATIONS)
- CHANNEL SAMPLES
- GRAB SAMPLE
- ROCK RUBBLE
- Py DOMINATED
- TALL SPRUCE
- MASS PY



340m @ 56°
 TO #1 POST
 4215292

KEY
 CH-231-09

.7m	09-MNH-668
.6m	667
.6m	666
.6m	665
.8m	664
.8m	663
1m	662
1m	661
1m	660
1m	659
.3m	658
1m	657
.33m	656
1m	655
1m	654
1m	653



RECON LINE
 10m STAT. INT.
 Dip

TO KINGHORN 2km

Date / Time of Issue: Sat Oct 10 13:56:49 EDT 2009

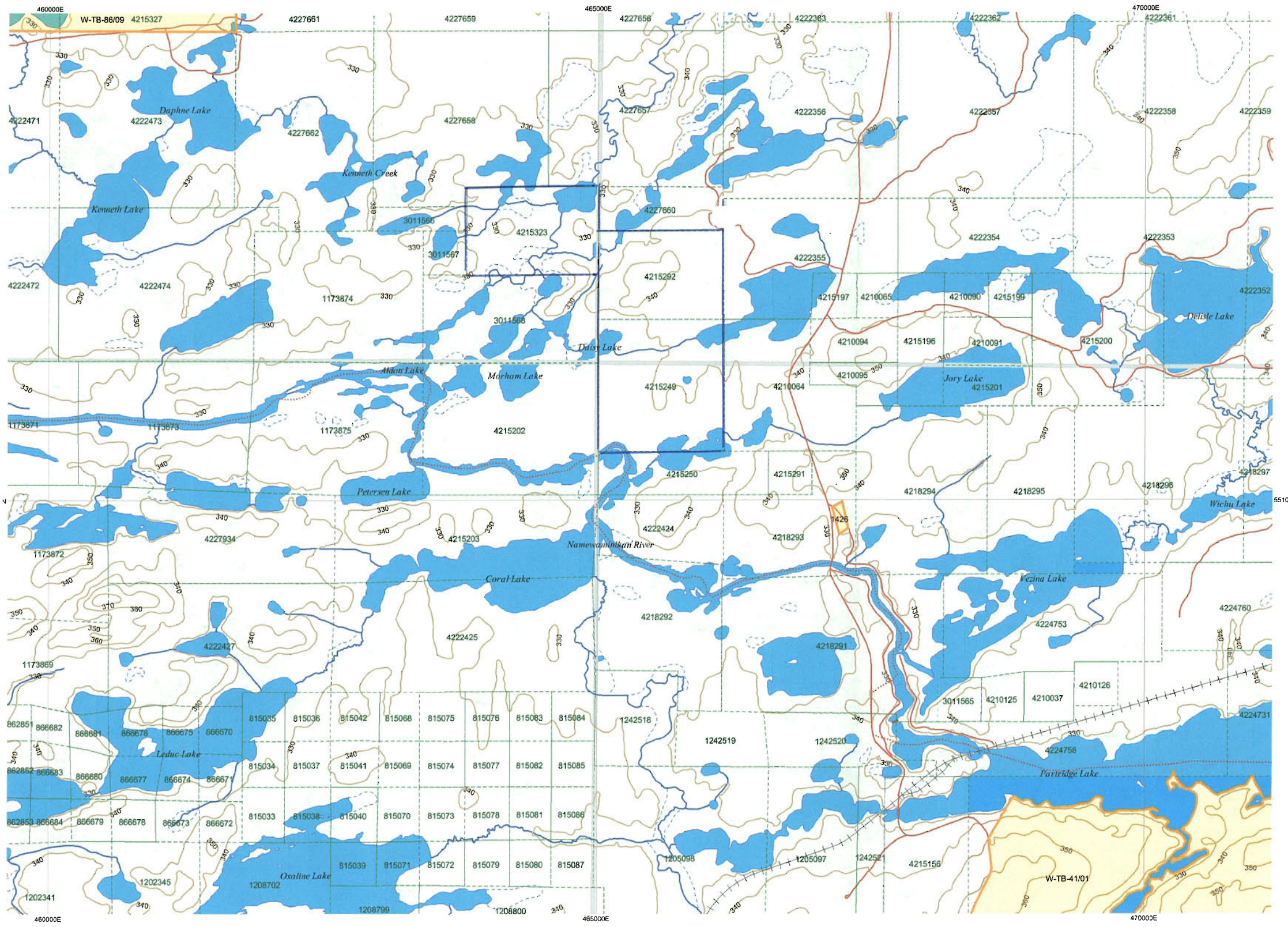
TOWNSHIP / AREA
LEGAULT

PLAN
G-0170

ADMINISTRATIVE DISTRICTS / DIVISIONS

Mining Division
Land Titles/Registry Division
Ministry of Natural Resources District

Thunder Bay
THUNDER BAY
NIPIGON

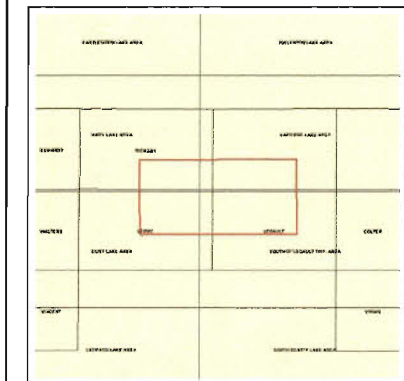


TOPOGRAPHIC

- Administrative Boundaries
- Township
- Concession Lot
- Provincial Park
- Indian Reserve
- Cliff, Pit & Pile
- Contour
- Mine Shafts
- Mine Headframe
- Railway
- Road
- Trail
- Natural Gas Pipeline
- Utilities
- Tower

Land Tenure

- Freehold Patent**
 - Surface And Mining Rights
 - Surface Rights Only
 - Mining Rights Only
- Leasehold Patent**
 - Surface And Mining Rights
 - Surface Rights Only
 - Mining Rights Only
- Licence of Occupation**
 - Uses Not Specified
 - Surface And Mining Rights
 - Surface Rights Only
 - Mining Rights Only
 - Land Use Permit
 - Order In Council (Not open for staking)
 - Water Power Lease Agreement
- Mining Claim**
 - Mining Claim
 - Filed Only Mining Claims



LAND TENURE WITHDRAWALS

- Areas Withdrawn from Disposition
- Mining Acts Withdrawal Types**
 - Surface And Mining Rights Withdrawn
 - Surface Rights Only Withdrawn
 - Mining Rights Only Withdrawn
- Order In Council Withdrawal Types**
 - Surface And Mining Rights Withdrawn
 - Surface Rights Only Withdrawn
 - Mining Rights Only Withdrawn
- IMPORTANT NOTICE



LAND TENURE WITHDRAWAL DESCRIPTIONS

Identifier	Type	Date	Description
1426	Wsm	Jul 5, 1991	PEND. AGGREG. APPL. JULY 05/91
1536	Ws	Jan 1, 2001	PARCEL 9801 TBF, PATENTED FOR S.R. ONLY M.R. AVAILABLE FOR STAKING.
1538	Wsm	Jan 1, 2001	PARTS 1, 2 & 3, PLAN 55M-476 NOT OPEN TO STAKING, SEC. 30(b)
1543	Wsm	Jan 1, 2001	PARTS 1, 2 & 3, PLAN 55M-476 NOT OPEN TO STAKING, SEC. 30(b)
1544	Wsm	Jan 1, 2001	COLEMAN DR. PLAN 55M-476 NOT OPEN FOR STAKING, SECS 30 (d).
W 81/87	Ws	Sep 29, 1987	SURFACE RIGHTS WITHDRAWN FROM STAKING ORDER W 81/87 87/09/29 SEE LEGAULT TWP LANDROLL
W-TB-06/89	Ws	Jan 16, 1989	Sec 36 S.R.O. W-TB-06/89 January 16, 1989
W-TB-41/01	Wsm	Dec 7, 2001	http://www.mndm.gov.on.ca/mines/lands/withreop/orders2001/wtb41-01_e.asp W-TB-41/01 M withdrawal S.35 Mining Act RSO 1999, December 7, 2001 Click to link withdrawal order/c/a/
W-TB-86/09	Wsm	Jul 9, 2009	http://www.mndm.gov.on.ca/mines/lands/withreop/orders2009/wtb86-09.pdf W-TB-86/09 M&S withdrawal S.35 Mining Act RSO 1999, July 9, 2009 Click to link to withdrawal/c/a/
W.14/82	Ws	Nov 8, 1982	W.14/82 08/11/82 S.R. 188528

IMPORTANT NOTICES

Areas under which special regulation, limitations or conditions exist that affect normal prospecting, staking and mineral development activities.

When staking mining claims should consult with the Provincial Mining Recorders' Office of the Ministry of Northern Development and Mines for additional information on the status of the lands shown hereon. This map is not intended for navigational, survey, or land title determination purposes as the information on this map is compiled from various sources. Completeness and accuracy are not guaranteed. Additional information may also be obtained through the Titles or Registry Office, or the Ministry of Natural Resources.

Information shown is derived from digital data available in the Provincial Mining Recorders' Office at the time of downloading from the Ministry of Northern Development and Mines web site.

General Information and Limitations

Contact Information:
Provincial Mining Recorders' Office
Willet Green Millery Centre 933 Ramsey Lake Road
Sudbury ON P3E 6B5
Home Page: www.mndm.gov.on.ca/MNDMMINES/LANDS/mismnpgc.htm

Toll Free
Tel: 1 (888) 415-9845 ext 578
Fax: 1 (877) 870-1444

Map Datum: NAD 83
Projection: UTM (6 degree)
Topographic Data Source: Land Information Ontario
Mining Land Tenure Source: Provincial Mining Recorders' Office

This map may not show unregistered land tenure and interests in land including certain patents, leases, easements, right of ways, flooding rights, licences, or other forms of disposition of rights and interest from the Crown. Also certain land tenure and land uses that restrict or prohibit free entry to stake mining claims may not be illustrated.

