



52N04NE0100 14 BATEMAN

010

Diamond Drilling

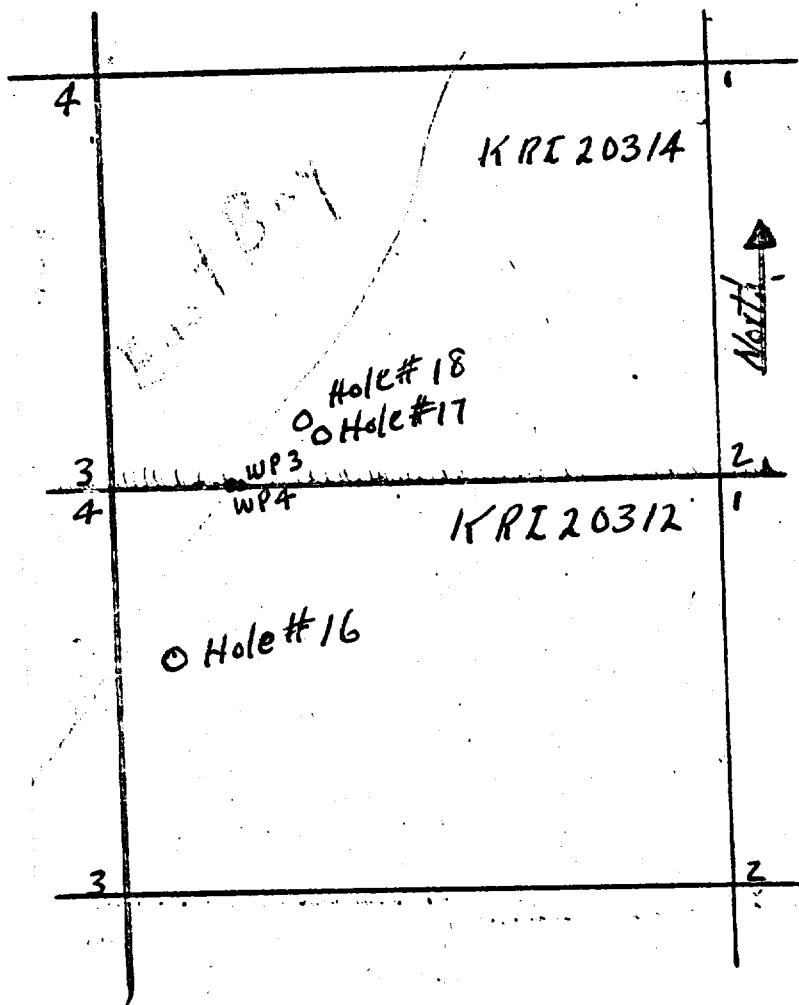
Township OF BATEMAN

Report NO: 14

Work performed by: MACBUCK RED LAKE GOLD MINES

Claim NO	Hole NO	Footage	Date	Note
KRL 20312	16	155'	May/49	
KRL 20314	17	63'	May/49	
	18	62'	June/49	

Notes:



Location: 50' E.,  
 LATITUDE 20' S. of W.P. #4, #16  
 KRL 20312.

STARTED May 26, 1949.

BEARING .....

DEPARTURE .....

COMPLETED May 28, 1949.

DIP 45 deg.

MacBuck Red Lake Gold Mines Limited

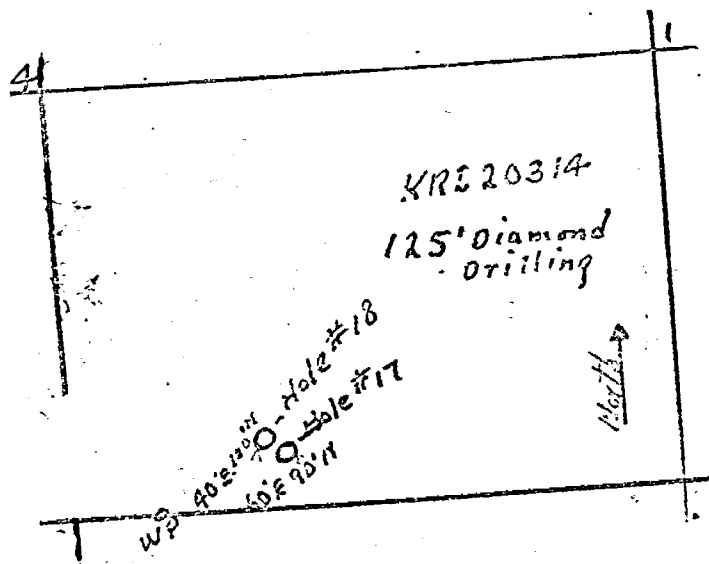
DEPTH 155 ft.

GENERAL GEOLOGY	ASSAY		SAMPLE		ECONOMIC GEOLOGY
	OZ.	VALUE	FEET	NUMBER	
0-7.5 Fine grained andesite with some banded (schisted) interflow material with biotite alteration.			1.4		18.4-19.4 Well mineralized interflow material 15% pyrite.
7.5-18.4 Fine grained andesite			0.5		54.3-54.9 Interflow material, 10% quartz, 10% pyrite.
18.4-100-0 Fine grained andesite with banded interflow material (60%) Occasional fine quartz stringers.			1.7		137.6-139.0 Cherty quartz & occasional fine blue quartz stringers, minor pyrite and pyrrhotite.
56.8-58.3 Highly carbonated 20% quartz.					
84.0-84.7 Highly carbonatized, 10% quartz.					
100-0-137.5 Fine grained andesite, 40% banded interflow material.					
137.5-155.0 Highly silicified, 90% banded interflow material mainly cherty quartz, some fine <del>exposed</del> blue quartz stringers.					
155.0 End of hole.					

*A. G. Van...*

ENGINEER

DRILLING CONTRACTOR



KRE 20314  
125' Diamond  
Drilling

Hole #18  
Hole #17

North

4

W.P.





Location: 50' E.,  
 LATITUDE 20' S. of W.P. #4, #16  
 KRL 20312.

STARTED May 26, 1949.

BEARING .....

DEPARTURE .....

COMPLETED May 28, 1949.

DIP 45 deg.

MacBuck Red Lake Gold Mines Limited

DEPTH 155 ft.

GENERAL GEOLOGY	ASSAY		SAMPLE		ECONOMIC GEOLOGY
	OZ.	VALUE	FEET	NUMBER	
0-7.5 Fine grained andesite with some banded (schisted) interflow material with biotite alteration.			1.4		18.4-19.4 Well mineralized interflow material 15% pyrite.
			0.6		54.3-54.9 Interflow material, 10% quartz, 10% pyrite.
7.5-18.4 Fine grained andesite			1.4		137.6-139.0 Cherty quartz & occasional fine blue quartz stringers, minor pyrite and pyrrhotite.
18.4-100-0 Fine grained andesite with banded interflow material (60%) Occasional fine quartz stringers.					
56.8-58.3 Highly carbonated 20% quartz.					
84.0-84.7 Highly carbonatized, 10% quartz.					
100-0-137.5 Fine grained andesite, 40% banded interflow material.					
137.5-155.0 Highly silicified, 90% banded interflow material mainly cherty quartz, some fine grained blue quartz stringers.					
155.0 End of hole.					

*A. G. Vance*