



52N07SE0003 30 SHABUMENI LAKE

DIAMOND DR.

010

AREA: SHABUMENI LAKE

REPORT NO: 30

WORK PERFORMED FOR: FALCONBRIDGE LIMITED

RECORDED HOLDER: SAME AS ABOVE []

: OTHER []

<u>CLAIM NO.</u>	<u>HOLE NO.</u>	<u>FOOTAGE</u>	<u>DATE</u>	<u>NOTE</u>
1023253	3	126.80 M	MAR/90	(1)
	4	123.75 M	MAR/90	(1)
	5	118.57 M	MAR/90	(1)

369.12

NOTE: (1) #w9120.05001, FILED SEPT/91

DIAMOND DRILL RECORD

NAME OF PROPERTY Swain Lake

HOLE NO. 3 SHEET NO. 2 OF 8

DEPTH		DESCRIPTION	NO.	% SULPHIDES	SAMPLE			ANALYSES			
FROM (m)	TO (m)				FROM	TO	TOTAL	ppb Au	Au oz/ton	Cu %	Zn %
33.54	33.81	QUARTZ VEIN: white to light grey; sugary to glassy quartz-calcite vein; minor andesite inclusions; top contact at 24°, lower contact irregular.	917	tr.	33.50	34.12	0.62		Tn		
33.81	53.46	ANDESITE: 33.81-37.65: pillowed flow/pillow breccia as at 3.04-24.90; frequent calcite veinlets, seams & patches; minor quartz ± calcite stringers; locally chloritic; weakly epidotized throughout; trace chalcopryite. 37.65-53.46: thick massive flow as at 24.90-33.54; very fine-grained chilled brecciated section at top of flow at 37.65-42.10; fine-grained core of flow at 42.10-49.94 with distinct plagioclase & pyroxene crystallization and very little superimposed veining & brecciation; section at 49.94-53.46 is texturally similar to 42.10-49.94 but has increasing brecciation and quartz-calcite veinlets, seams & patches; section at 52.85-53.46 is heavily brecciated & veined with 30% irregular quartz-calcite veins & patches with 1% chalcopryite & 1% pyrrhotite - locally in coarse patches up to 1 cm.	918	2	52.83	53.46	0.63		Tn	0.015	
53.46	55.05	QUARTZ VEIN: mixture of white to grey quartz, mauve-grey feldspar & white to grey calcite; blotchy color variations; texture varies considerably from aphanitic, cherty & opaque to coarse interlocking crystals; minor carbonatized andesite inclusions.	919 920	- -	53.46 54.29	54.29 55.05	0.83 0.76		Tn	0.02	
55.05	58.08	BRECCIATED ALTERED ANDESITE: massive flow; fine-	921	-	55.05	56.15	1.10		Tn		

DIAMOND DRILL RECORD

DEPTH		DESCRIPTION	SAMPLE				ANALYSES		
FROM	TO		NO.	% SULPHIDES	DEPTH		TOTAL	ppb Au	Au oz/ton
(m)	(m)				FROM	TO			
		to black chlorite ± quartz up to 3mm in size in amounts ranging up to 30%; alteration consists mainly of veinlets, breccia matrix fillings & irregular patches of light green epidote, grey siliceous alteration & minor light grey calcite; trace sulphide.							
111.07	115.89	ANDESITE: probably massive flow; fine-grained, grey to green-grey, massive; weakly spherulitic/amygdaloidal with minor calcite ± quartz "blobs" up to 2mm; minor light green epidote-siliceous alteration in veinlets & irregular patches, including a large patch at 112.75-112.92; rare late quartz-calcite veinlets.							
115.89	120.70	ALTERED ANDESITE: moderately altered, variably spherulitic/amygdaloidal and possibly fragmental unit as at 102.52-111.07; spherulites/amygdules range up to 2mm and vary from white quartz-calcite to light green siliceous-epidote to green-black chlorite; locally has a fragmental appearance; alteration consists mainly of veinlets & irregular patches of light green epidote, grey siliceous alteration & light grey calcite; minor secondary, locally radiating, clusters of amphibole at 116.30-116.75; 1% chalcopyrite & pyrrhotite.	932	1	115.89	117.06	1.17		Nil
			933	tr.	117.06	118.33	1.27		Tr
			934	tr.	118.33	119.50	1.17		0.01
			935	1	119.50	120.70	1.20		0.02
120.70	126.80	ANDESITE: massive flow; fine-grained, grey, massive; locally blotchy textured & weakly spherulitic; white quartz veins with 5mm, inward-growing, pale mauve rinds of feldspar along wall of veins at							

NAME OF PROPERTY Swain Lake

DIAMOND DRILL RECORD

HOLE NO. 3 SHEET NO. 8 OF 8

DEPTH		DESCRIPTION	SAMPLE				ANALYSES					
FROM (m)	TO (m)		NO.	% SUL- PHIDES	DEPTH		TOTAL	ppb Au	Au oz/ ton	Cu %	Zn %	Ag oz/t
					FROM	TO						
		121.59-121.61 (core \angle 37°), 123.54-123.65 (core \angle 42°), 124.06-124.09 (core \angle 28°), 124.16-124.17 (core \angle 35°), 124.56-124.60 (core \angle 40°) and 125.45-125.48 (core \angle 32°); 1% pyrrhotite & trace chalcopryite at 123.49-124.64; minor black sphalerite along calcite seam in vein at 123.54-123.65.	936	1	123.49	124.64	1.15		TN	0.04	0.04	NIL
126.80		END OF HOLE.										



DIAMOND DRILL RECORD

DEPTH		DESCRIPTION	NO.	% SULPHIDES	SAMPLE			ANALYSES		
FROM (m)	TO (m)				FROM	TO	TOTAL	ppb Au	Au oz/ton	
		grey, originally massive but weakly brecciated; pillows generally 10 cm to 1 m and defined by dark green-grey selvages & minor inter-pillow material; pillow interstices contain varying proportions of pillow fragments, chlorite, calcite, siliceous alteration & locally epidote; minor calcite ± quartz ± chlorite ± epidote veinlets, patches & fracture fillings; locally bleached & silicified; minor chalcopyrite & pyrrhotite.								
		29.95-35.38: massive flow unit; very fine-grained at margins to fine-grained in center; grey, massive; becomes weakly porphyritic in center to lower portions of flow with abundant skeletal plagioclase and minor pyroxene crystals up to 1 mm; rare calcite-chlorite ± epidote veinlets.								
		35.38-39.94: massive flow unit; very fine-grained at margins, fine-grained in center of flow; grey to green-grey; originally massive but moderately brecciated; frequency of calcite ± chlorite ± quartz ± epidote veinlets, seams & patches increases down section.								
39.94	42.37	SHEARED ALTERED ANDESITE: 39.94-41.85: fine-grained, crudely banded light grey to green-grey, brecciated to schistose; weakly sheared but heavily carbonatized section with frequent calcite veinlets, seams, patches, replacements & disseminations; minor quartz stringers & lenses; minor epidote; minor chlorite & sericite; minor silicification; minor pyrrhotite; core ∠ 33° to core axis at 40.77.	938	tr.	39.93	40.87	0.94		TN	
			939	tr.	40.87	41.85	0.98		TN	

DIAMOND DRILL RECORD

DEPTH		DESCRIPTION	NO.	% SULPHIDES	SAMPLE			ANALYSES		
FROM (m)	TO (m)				FROM	TO	TOTAL	ppb Au	Au oz/ton	Cu %
		41.85-42.37: foliated section of fine-grained massive flow with frequent stringers of intermediate porphyritic dike as at 42.37-53.45; minor calcite & quartz veinlets.								
42.37	53.45	INTERMEDIATE PORPHYRITIC DIKE: fine- to medium-grained phenocrysts in fine-grained groundmass; grey; massive - but foliated near contacts; weakly porphyritic with 5% anhedral to euhedral, light grey, altered feldspar phenocrysts and 1% black, anhedral to euhedral pyroxene phenocrysts up to 2mm; rare quartz-calcite veinlets; irregular andesite inclusion at 53.20-53.27; top contact at 33°, lower contact at 34° to core axis.								
53.45	91.74	ANDESITE: 53.45-87.80: pillowed flow; generally as at 10.57-29.95 but moderately brecciated & laced with frequent quartz-calcite veinlets, seams, stringers & patches; veinlets are commonly flanked by bleached or silicified envelopes of up to 2cm; minor epidote; 1 cm thick quartz-calcite-mauve feldspar vein at 57.39 with core L29°; 1 cm thick mauve feldspar-quartz-calcite vein extends along core at 61.42-61.80; mauve feldspar stringer up to 2 cm thick extends irregularly along core at 62.89-63.82; generally minor chalcoprite & pyrrhotite, though up to 1% combined at 79.65-82.60 - mostly in chloritic pillow interstices. 87.80-91.74: pillow fragment breccia; very fine-grained;	940	-	62.88	63.83	0.95		NIL	-
			941	1	79.65	81.15	1.50		0.85	0.096
			942	1	81.15	82.60	1.45		TN	0.031

DIAMOND DRILL RECORD

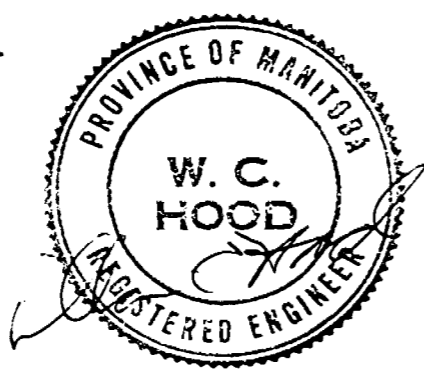
DEPTH		DESCRIPTION	NO.	% SULPHIDES	SAMPLE			ANALYSES			
FROM (m)	TO (m)				FROM	TO	TOTAL	ppb Au	Au oz/ton	Cu %	Ag oz/t
		irregular & swirled light green to green-grey; irregular, swirled, contorted, chloritic selvages enclose pillow fragments ranging from 1cm to 10 cm in size within a light green interstitial mix of andesite breccia fragments and siliceous alteration ± epidote ± calcite matrix; minor pyrrhotite.									
91.74	121.60	BASALT: massive flow; very fine-grained in chilled margin at 91.74-92.60, then ranges from fine-grained to near medium-grained in center of flow; locally weakly porphyritic with minor plagioclase & pyroxene crystals up to 1 mm in fine-grained groundmass; section at 99.20-107.72 has good "salt'n pepper" basalt texture to almost gabbroic texture in places; becomes weakly brecciated with minor chloritic fracture fillings at 107.72-120.70; becomes fine-grained at 120.70-121.60 with minor veinlets & patches of light green siliceous-epidote alteration; trace chalcopryite & pyrrhotite.									
121.60	123.75	ANDESITE: interflow breccia unit; very fine-grained, mottled light green to grey-green, massive to brecciated; breccia/brecciated unit with frequent irregular patches, veinlets & breccia matrix fillings of green siliceous-epidote alteration & minor calcite-quartz veinlets & stringers; 2% chalcopryite & 2% pyrrhotite locally in 1 cm patches associated with siliceous-epidote alteration.	943 944	4 3	121.60 122.22	122.22 123.75	0.62 1.53		0.01 0.005	0.40 0.083	0.195 0.260

DIAMOND DRILL RECORD

NAME OF PROPERTY Swain Lake

HOLE NO. 4 SHEET NO. 5 OF 5

DEPTH		DESCRIPTION	NO.	% SUL- PHIDES	SAMPLE			ppb Au	Au oz/ ton	ANALYSES		
FROM (m)	TO (m)				FROM	TO	TOTAL					
123.75		END OF HOLE.										



DIAMOND DRILL RECORD

NAME OF PROPERTY Swain Lake - Falconbridge Option
 HOLE NO. BL-90-5 LENGTH 118.57 meters.
 LOCATION _____
 LATITUDE 2+59 S DEPARTURE 5+57 W
 ELEVATION _____ AZIMUTH 0° north DIP -45°
 STARTED March 8/90 FINISHED March 9/90

	DIP	AZIMUTH	FOOTAGE	DIP	AZIMUTH

HOLE NO. 5 SHEET NO. 1
 REMARKS BL-89-2 follow-up

LOGGED BY W. C. Hood

DESCRIPTION		SAMPLE				ANALYSES				
FROM	TO	NO.	% SULPHIDES	FROM	TO	TOTAL	ppb Au	OZ/TON	OZ/TON	OZ/TON
0	2.13									
2.13	3.28									
3.28	5.54	945	-	3.24	4.50	1.26		0.01		
		946	-	4.50	5.54	1.04		Tn		
5.54	10.75	947	-	5.54	6.89	1.35		Tn		
		948	-	6.89	8.10	1.21		0.01		
		949	-	8.10	9.45	1.35		0.005		
		950	-	9.45	10.75	1.30		Tn		
10.75	12.87	951	-	10.75	12.00	1.25		0.005		

DIAMOND DRILL RECORD

DEPTH		DESCRIPTION	NO.	% SULPHIDES	SAMPLE			ANALYSES			
FROM	TO				FROM	TO	TOTAL	ppb Au	Au oz/ton		
(m)	(m)										
12.87	45.36	<p>massive to brecciated; alteration generally as at 3.28-5.54 but decreases down section.</p> <p>ANDESITE: 12.87-37.14: massive flow(s); fine-grained, grey, massive; locally weakly porphyritic with minor pyroxene phenocrysts up to 2 mm; minor chlorite fracture fillings; rare calcite-quartz ± pyrrhotite veinlets; only about 25% core recovery at 23.56-24.54 in epidotized chloritic zone; possible interflow breccia unit at 33.30-34.60 in weakly brecciated & spherulitic zone; generally minor chalcopyrite & pyrrhotite but low combined at 35.36-36.28. 37.14-38.65: interflow breccia unit; highly variable unit ranging from very fine-grained, light to dark grey-green fragments to fine-grained, even textured, grey colored flow material; locally spherulitic/amygdales with minor light grey calcite spherulites/amygdales; locally chloritic; heavily altered at 37.14-37.92 with irregular patches of green siliceous-epidote alteration and creamy white siliceous alteration; minor calcite; minor pyrrhotite. 38.65-45.36: massive flow; generally fine-grained, grey, massive to weakly brecciated; inclusion of interflow breccia unit (as at 37.14-38.65) at 39.05-39.59; minor chlorite fracture fillings; minor calcite-quartz ± epidote veinlets & seams; becomes very fine-grained and may grade into interflow breccia unit</p>									
			952	-	23.41	24.65	1.24			Tu	
			953	1	35.36	36.28	0.92			0.005	
			954	tr.	37.14	37.95	0.81			Tu	

DIAMOND DRILL RECORD

DEPTH		DESCRIPTION	NO.	% SULPHIDES	SAMPLE			ANALYSES			
FROM (m)	TO (m)				FROM	TO	TOTAL	ppb Au	Au oz/ton	Cu %	Ag oz/t.
		grey-green, massive to brecciated; frequent chlorite ± calcite ± quartz ± epidote veinlets, stringers & breccia fillings; minor pyrrhotite.									
		55.40-83.23: massive flow; fine-grained, grey, massive; minor chlorite ± calcite ± quartz ± epidote veinlets; rare pink potassic seams; trace pyrrhotite.									
		83.23-95.20: massive flow; same lithology as at 55.40-83.23 but increased fracture, alteration & veinlet intensity; frequent irregular chlorite fracture fillings; frequent calcite ± quartz ± chlorite ± pyrrhotite veinlets & stringers - e.g. stringer extending along core axis at 91.37-92.06; commonly bleached to lighter grey color adjacent to fractures & veinlets; minor partly digested breccia fragments at 93.56-94.10; becomes very fine-grained at 94.10-95.20; generally minor pyrrhotite - though 2% at 92.62-95.20.	959	2	92.62	94.10	1.48				
			960	2	94.10	95.20	1.10				
95.20	101.15	ALTERED ANDESITE: 95.20-96.32: very fine-grained, grey to green-grey, massive to weakly brecciated; probably same lithology as above but weakly silicified throughout and becomes increasingly epidotized down section; minor calcite veinlets; minor pyrrhotite.	961	tr.	95.20	96.32	1.12				
		96.32-100.54: heavily altered section; fine-grained, mottled to patchy green to green-grey, massive to brecciated; 50% pervasive epidote-carbonate-siliceous alteration in irregular patches up to 30 cm; minor chlorite; 50% weakly altered	962	3	96.32	97.72	1.40				
			963	3	97.72	99.18	1.46				
			964	3	99.18	100.54	1.36				
								TN			
								TN			
								TN	0.006		TN
								TN	0.089		TN
								TN	0.36		0.20

DIAMOND DRILL RECORD

DEPTH		DESCRIPTION	SAMPLE				ANALYSES			
FROM (m)	TO (m)		NO.	% SUL- PHIDES	DEPTH		TOTAL	ppb Au	Au oz/ ton	
					FROM	TO				
		andesite remnants; 2% pyrrhotite & 1% chalcopryite - commonly in coarse aggregates up to 1 cm with chalcopryite around the fringes of coarse pyrrhotite aggregates. 100.54 - 101.15: fine-grained, mottled to banded light grey to grey-green, weakly sheared to heavily brecciated; weakly sheared andesite remnants within heavily carbonatized section of white to light grey calcite; locally chloritic; trace pyrrhotite.	965	tr.	100.54	101.15	0.61		0.005	
101.15	101.52	QUARTZ FELDSPAR VEIN: ranges from fine- to coarse-grained; color varies from white to pale mauve to greenish; central core of coarse-grained mauve feldspar + quartz at 101.22 - 101.39 is flanked by white quartz & light mauve feldspar at edges of vein; andesite is epidotized at edges of vein.	966	-	101.15	101.52	0.37		Tr	
101.52	109.15	ALTERED ANDESITE 101.52 - 106.24: generally the same lithology & alteration as at 96.32 - 100.54 - i.e. 50% pervasive siliceous- epidote-calcite alteration and 50% weakly altered andesite remnants in patches up to 30 cm; minor late calcite-chlorite veinlets & patches; 1% pyrrhotite; minor chalcopryite. 106.24 - 107.04: weakly altered andesite remnant; fine-grained, green-grey, massive; frequent calcite & epidote veinlets. 107.04 - 108.22: section of olive green, fine-grained, pervasive epidote-siliceous-calcite alteration;	967	1	101.52	103.05	1.53		Nil	
			968	1	103.05	104.68	1.63		Nil	
			969	1	104.68	106.24	1.56		Nil	
			970	-	106.24	107.04	0.80		Nil	
			971	tr.	107.04	108.22	1.18		Nil	

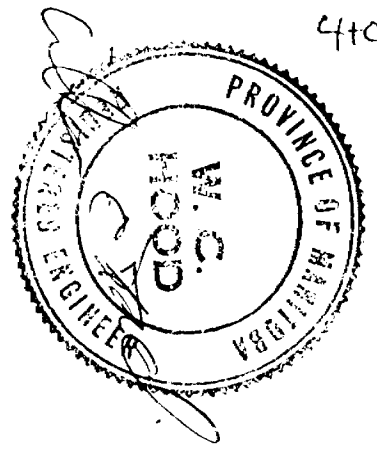
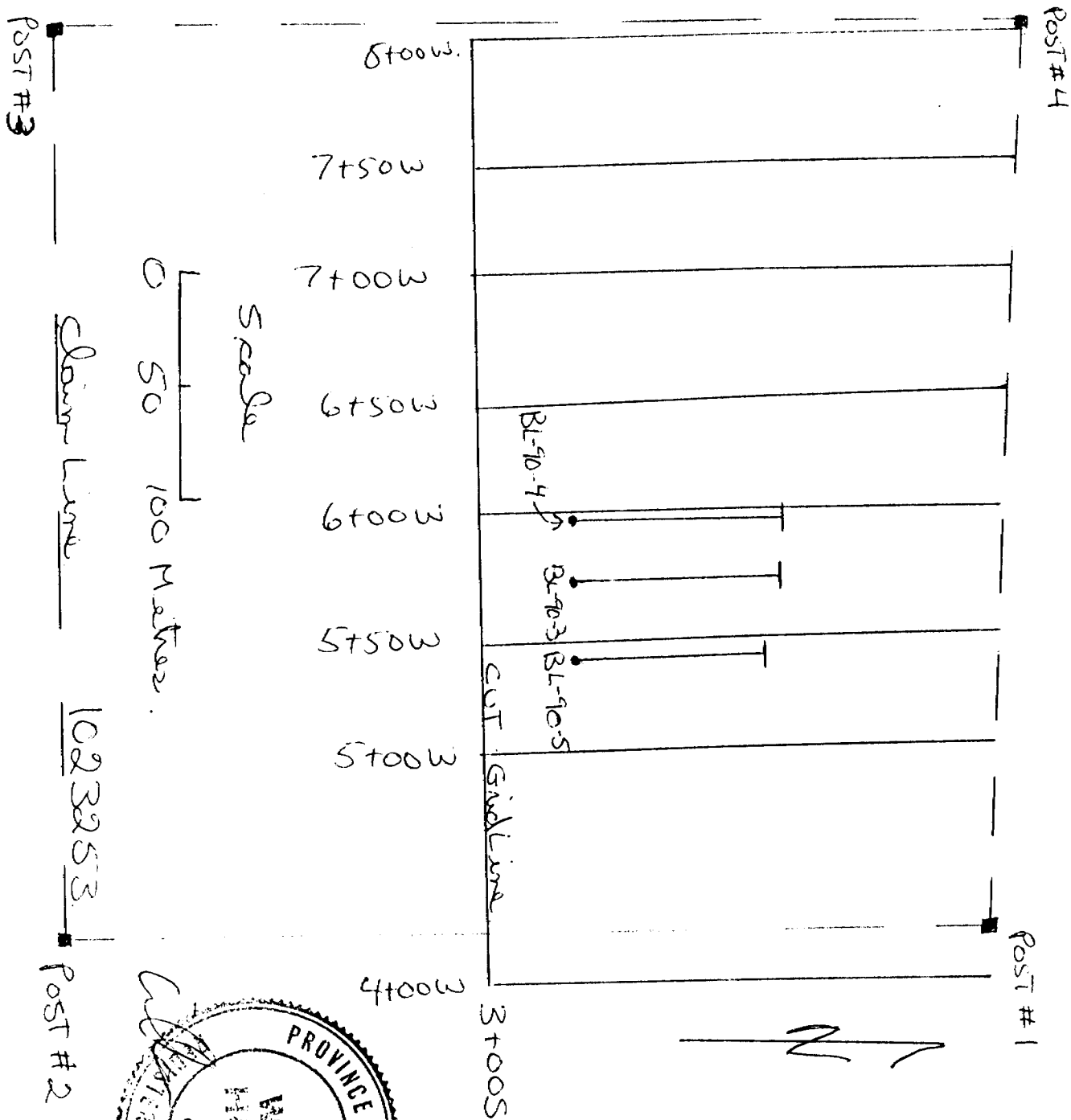
NAME OF PROPERTY Swain Lake

HOLE NO. 5 SHEET NO. 7 OF 7

DIAMOND DRILL RECORD

DEPTH		DESCRIPTION	NO.	% SULPHIDES	SAMPLE			ANALYSES			
FROM (m)	TO (m)				DEPTH FROM	TO	TOTAL	ppb Au	Au oz/ton	Cu %	Ag oz/t
		spherulites; minor epidote patches; 5mm thick mauve feldspar vein at 116.00 with core $\angle 27^\circ$.									
116.08	118.57	ALTERED ANDESITE: probably silicified epidotized spherulitic massive flow; fine- to medium-grained, spotted white to light grey to light green to black; crowded with numerous 1 to 2 mm black chloritic spots, green epidote spots & white siliceous spots in a matrix of light to medium grey silicified andesite; locally chloritic, locally epidotized; low chalcopryite, low pyrrhotite.	976	2	116.08	117.08	1.00	Nil	0.084		0.04
			977	2	117.08	118.57	1.49	Nil	0.045		Tn
118.57		END OF HOLE.									





Falconbridge - 1 pg. 885-4152
att: D. Hodges

Re: Swain Lake Diamond Drilling

Three holes were drilled for Milestone Resources in March of 1990.

This drilling was invoiced to Milestone at \$27.00 per foot all inclusive. The total footage was 1211 feet of B Q.

Yours truly,
Wayne Wynne
Wayne Drilling Ltd.
Gen. Del. Bennett, Man.
R E O J O

1211
27

8477
2422

32697



Report of Work Conducted After Recording Claim

Transaction Number
W9120.05001

Mining Act

Personal information collected on this form is obtained under the authority of the Ministry. This collection should be directed to the Provincial Manager, Mining Lands, Ministry of Northern Development and Mines, Sudbury, Ontario, P3E 6A5, telephone (705) 670-7264.



900

- Instructions:**
- Please type or print and submit in duplicate.
 - Refer to the Mining Act and Regulations for requirements of filing assessment work or consult the Mining Recorder.
 - A separate copy of this form must be completed for each Work Group.
 - Technical reports and maps must accompany this form in duplicate.
 - A sketch, showing the claims the work is assigned to, must accompany this form.

Recorded Holder(s) FALCONBRIDGE LIMITED		Client No. # 130679
Address P.O. BOX 40 Commerce Court Toronto, Ontario M5L 1B4		Telephone No. (416) 863-7057
Mining Division Red Lake	Township/Area Swain Post	M or G Plan No. HONEYWELL T. M. 2171 SHABUMENI L. G 1831
Dates Work Performed From: March 4, 1990		To: March 9, 1990

Work Performed (Check One Work Group Only)

Work Group	Type
Geotechnical Survey	
Physical Work, Including Drilling	Diamond Drilling
Rehabilitation	
Other Authorized Work	
Assays	
Assignment from Reserve	

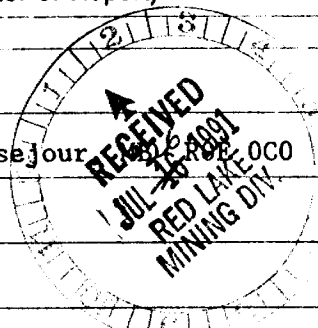
ONTARIO GEOLOGICAL SURVEY
GIS - ASSESSMENT FILES
AUG 02 1991
RECEIVED

Total Assessment Work Claimed on the Attached Statement of Costs \$ 32,697.00

Note: The Minister may reject for assessment work credit all or part of the assessment work submitted if the recorded holder cannot verify expenditures claimed in the statement of costs within 30 days of a request for verification.

Persons and Survey Company Who Performed the Work (Give Name and Address of Author of Report)

Name	Address
WYNNE DRILLING	BISSETT, MANITOBA
W.C. HOOD & ASSOCIATES	P.O. BOX 1722, 508 Elm Avenue, Beausejour



(attach a schedule if necessary)

Certification of Beneficial Interest * See Note No. 1 on reverse side

I certify that at the time the work was performed, the claims covered in this work report were recorded in the current holder's name or held under a beneficial interest by the current recorded holder.	Date 12/07/91	Recorded Holder or Agent (Signature) <i>[Signature]</i>
--	------------------	--

Certification of Work Report

I certify that I have a personal knowledge of the facts set forth in this Work report, having performed the work or witnessed same during and/or after its completion and annexed report is true.		
Name and Address of Person Certifying William C. Hood, P.O. Box 1722, Beausejour, Manitoba R0E 0C0		
Telephone No. (204) 268-3475	Date July 15/91	Certified By (Signature) <i>[Signature]</i>

For Office Use Only

Total Value Cr. Recorded # 32,697.00	Date Recorded July 26, 1991	Mining Recorder <i>[Signature]</i>	Received Stamp
	Deemed Approval Date October 26, 1991	Date Approved Mining Recorder	
	Date Notice for Amendments Sent July 22, 24, 1991		



Ministry of
Northern Development
and Mines

Ontario

Ministère du
Développement du Nord
et des mines

**Statement of Costs
for Assessment Credit**

**État des coûts aux fins
du crédit d'évaluation**

Mining Act/Loi sur les mines

Transaction No./N° de transaction

W9120-05001

Personal information collected on this form is obtained under the authority of the Mining Act. This information will be used to maintain a record and ongoing status of the mining claim(s). Questions about this collection should be directed to the Provincial Manager, Minings Lands, Ministry of Northern Development and Mines, 4th Floor, 159 Cedar Street, Sudbury, Ontario P3E 6A5, telephone (705) 670-7264.

Les renseignements personnels contenus dans la présente formule sont recueillis en vertu de la Loi sur les mines et serviront à tenir à jour un registre des concessions minières. Adresser toute question sur la collecte de ces renseignements au chef provincial des terrains miniers, ministère du Développement du Nord et des Mines, 159, rue Cedar, 4^e étage, Sudbury (Ontario) P3E 6A5, téléphone (705) 670-7264.

1. Direct Costs/Coûts directs

Type	Description	Amount Montant	Totals Total global
Wages Salaires	Labour Main-d'oeuvre		
	Field Supervision Supervision sur le terrain		
Contractor's and Consultant's Fees Droits de l'entrepreneur et de l'expert- consell	Type Contractor	\$32,697.	
	Diamond Drilling (1211 ft x \$27/ft)		\$32,697.
Supplies Used Fournitures utilisées	Type		
Equipment Rental Location de matériel	Type		
Total Direct Costs Total des coûts directs			\$32,697.

2. Indirect Costs/Coûts indirects

** Note: When claiming Rehabilitation work Indirect costs are not allowable as assessment work.
Pour le remboursement des travaux de réhabilitation, les coûts indirects ne sont pas admissibles en tant que travaux d'évaluation.

Type	Description	Amount Montant	Totals Total global
Transportation Transport	Type		
Food and Lodging Nourriture et hébergement			
Mobilization and Demobilization Mobilisation et démobilisation			
Sub Total of Indirect Costs Total partiel des coûts indirects			
Amount Allowable (not greater than 20% of Direct Costs) Montant admissible (n'excédant pas 20 % des coûts directs)			
Total Value of Assessment Credit (Total of Direct and Allowable Indirect costs)		Valeur totale du crédit d'évaluation (Total des coûts directs et Indirects admissibles)	

Note: The recorded holder will be required to verify expenditures claimed in this statement of costs within 30 days of a request for verification. If verification is not made, the Minister may reject for assessment work all or part of the assessment work submitted.

Note : Le titulaire enregistré sera tenu de vérifier les dépenses demandées dans le présent état des coûts dans les 30 jours suivant une demande à cet effet. Si la vérification n'est pas effectuée, le ministre peut rejeter tout ou une partie des travaux d'évaluation présentés.

Filing Discounts

1. Work filed within two years of completion is claimed at 100% of the above Total Value of Assessment Credit.
2. Work filed three, four or five years after completion is claimed at 50% of the above Total Value of Assessment Credit. See calculations below:

Total Value of Assessment Credit	Total Assessment Claimed
x 0.50 =	

Remises pour dépôt

1. Les travaux déposés dans les deux ans suivant leur achèvement sont remboursés à 100 % de la valeur totale susmentionnée du crédit d'évaluation.
2. Les travaux déposés trois, quatre ou cinq ans après leur achèvement sont remboursés à 50 % de la valeur totale du crédit d'évaluation susmentionné. Voir les calculs ci-dessous.

Valeur totale du crédit d'évaluation	Évaluation totale demandée
x 0,50 =	

Certification Verifying Statement of Costs

I hereby certify:
that the amounts shown are as accurate as possible and these costs were incurred while conducting assessment work on the lands shown on the accompanying Report of Work form.

that as Office Administrator I am authorized
(Recorded Holder, Agent, Position in Company)

to make this certification as referred to the fax from
H. Wynne attached.

Attestation de l'état des coûts

J'atteste par la présente :
que les montants indiqués sont le plus exact possible et que ces dépenses ont été engagées pour effectuer les travaux d'évaluation sur les terrains indiqués dans la formule de rapport de travail ci-joint.

Et qu'à titre de _____ je suis autorisé
(titulaire enregistré, représentant, poste occupé dans la compagnie)

à faire cette attestation.

Signature <u>[Signature]</u>	Date <u>July 15/91</u>
---------------------------------	---------------------------

Applying Reserve	(see Note 2)	Claim Units
	1058386	16 Ha
	1058387	16 Ha
	1058388	16 Ha
	1058389	16 Ha
	1058390	16 Ha
	1058391	16 Ha
	1058393	16 Ha
	1058394	16 Ha
	1058395	16 Ha
	1058396	16 Ha
	1058397	16 Ha
	1058398	16 Ha
	1058399	16 Ha
	1058400	16 Ha
	1058401	16 Ha
	1023253	16 Ha
16 <i>OK</i>		

Total Number of Claims

Work Done on this Claim	Applied to this Claim
nil	\$ 800.00
nil	800.00
nil	800.00
nil	800.00
nil	800.00
nil	800.00
nil	800.00
nil	800.00
nil	800.00
nil	800.00
nil	800.00
nil	800.00
nil	800.00
nil	800.00
nil	800.00
nil	800.00
nil	800.00
nil	800.00
nil	800.00
nil	800.00
nil	800.00
\$32,697.00	nil <i>OK</i>
\$32,697.00	\$12,000.00

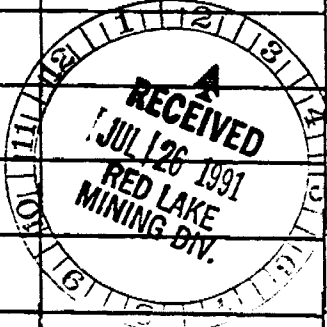
Total Value Work Done

Total Value Work Applied

Assigned from this Claim	Work to be Claimed at a Future Date
#1023253 <i>OK</i>	21,323 <i>OK</i>
\$12,000 <i>OK</i>	\$20,697.00 <i>OK</i>
#1023253	21,323 <i>OK</i>

Total Assigned From

Total Reserve



Credits you are claiming in this report may be cut back. In order to minimize the adverse effects of such deletions, please indicate from which claim you wish to prioritize the deletion of credits. Please mark (✓) one of the following:

1. Credits are to be cut back starting with the claim listed last, working backwards.
2. Credits are to be cut back equally over all claims contained in this report of work.
3. Credits are to be cut back as prioritized on the attached appendix.

In the event that you have not specified your choice of priority, option one will be implemented.

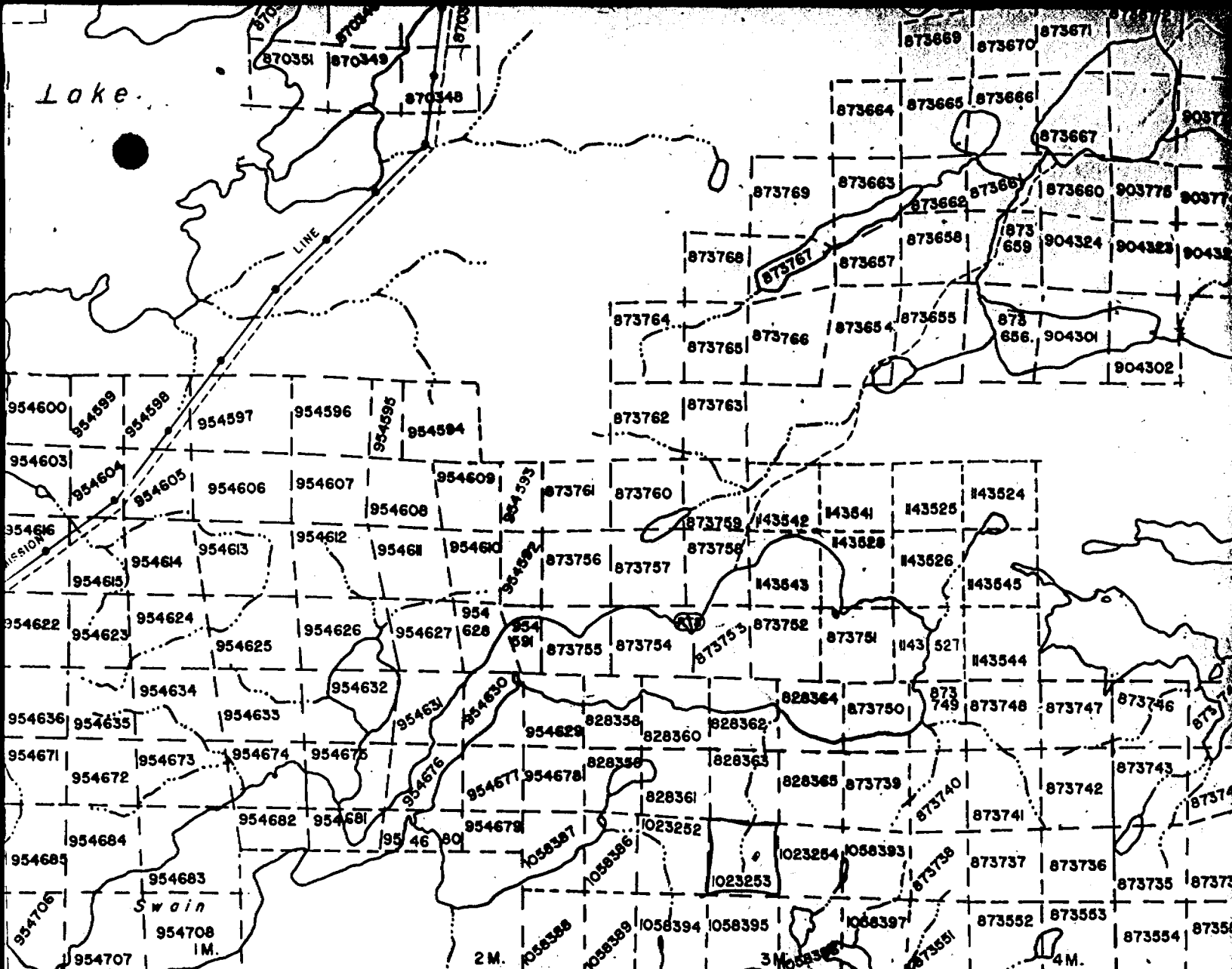
Note 1: Examples of beneficial interest are unrecorded transfers, option agreements, memorandum of agreements, etc., with respect to the mining claims.

Note 2: If work has been performed on patented or leased land, please complete the following:

I certify that the recorded holder had a beneficial interest in the patented or leased land at the time the work was performed.

Signature: *[Handwritten Signature]* Date: 12/07/91

Lake



Shabumqui L.
G. 1881

HONEYWELL TWP.

FOR STATUS REFER TO TWP PLAN No.

Washagomis
 Lake

Bamford L.