

## **Appendix VI**

### **Geology Plan and Deposit Section Maps**

680000

680400

680800



# East Coldstream Deposit 2010 Drilling Program

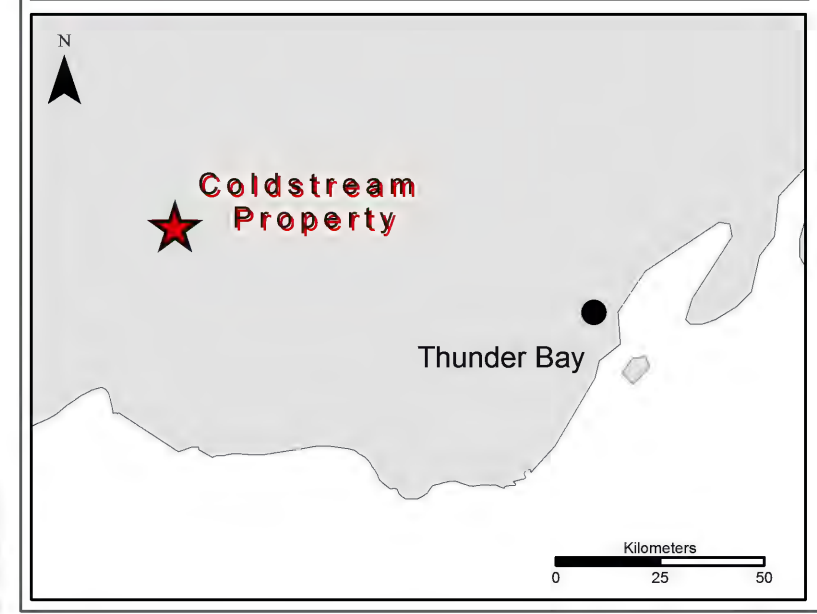
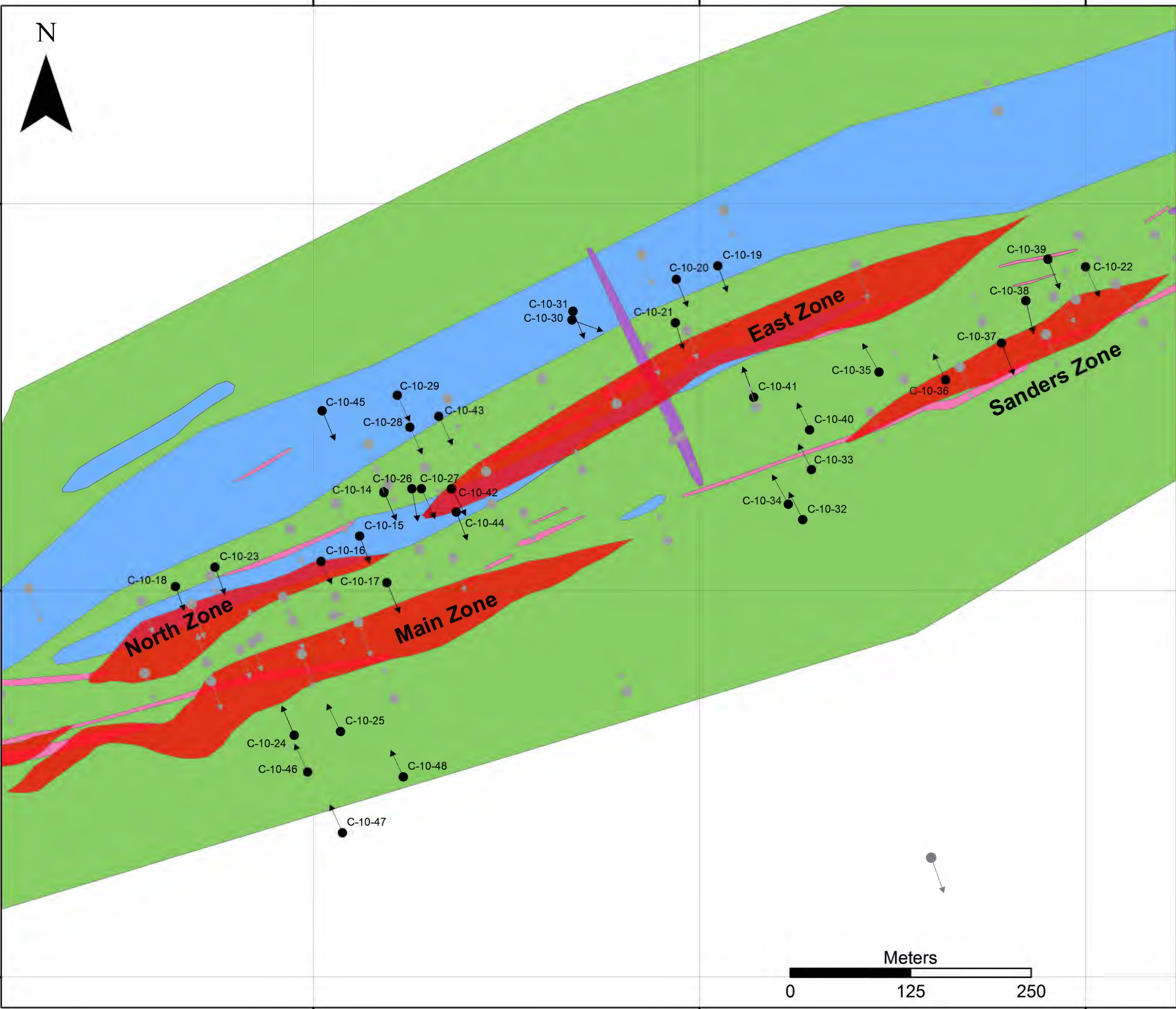
## Plan Map NAD83 Zone 15N

### Legend

-  Foundation Resources Drill Holes
-  Historic Drill Holes

### Geological Units

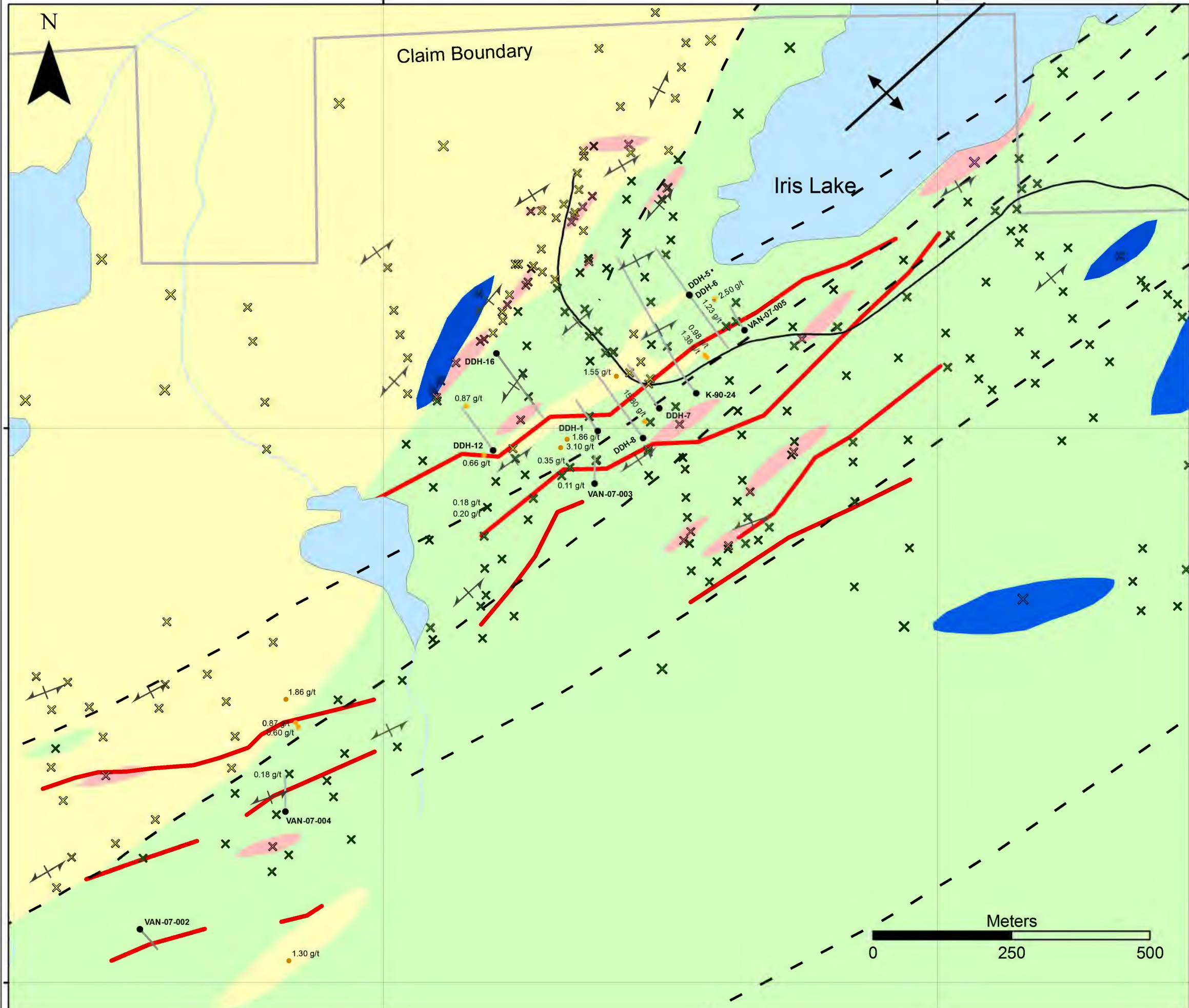
-  Diabase Dyke
-  Gabbro
-  Mafic \ Intermediate Volcanic
-  Quartz-Feldspar Porphyry \ Felsite Dyke
-  Mineralized Zone





680400

681400



## Iris Zone Location Map

## Geology Plan Map

### Legend

- Lakes
- IP Anomalies (Historical)
- Roads
- Claim Boundary
- Geological Units**
- Quartz-Feldspar-Porphyry / Feldspar
- Felsic Volcanic
- Mafic Volcanic
- Gabbro
- Symbols**
- Outcrops
- Historical Grab Samples (Au > 0.1 g/t)
- Shear Zone
- Foliation (Sub-Vertical)
- Anticline (Osmani, 1996)
- Historical Drill Hole with Trace  
VAN-07-00X  
Everett Resources Ltd.  
DDH-X  
New Jack Lake Uranium Mines Ltd.  
K-90-24  
Freeport-McMoRan Gold Company

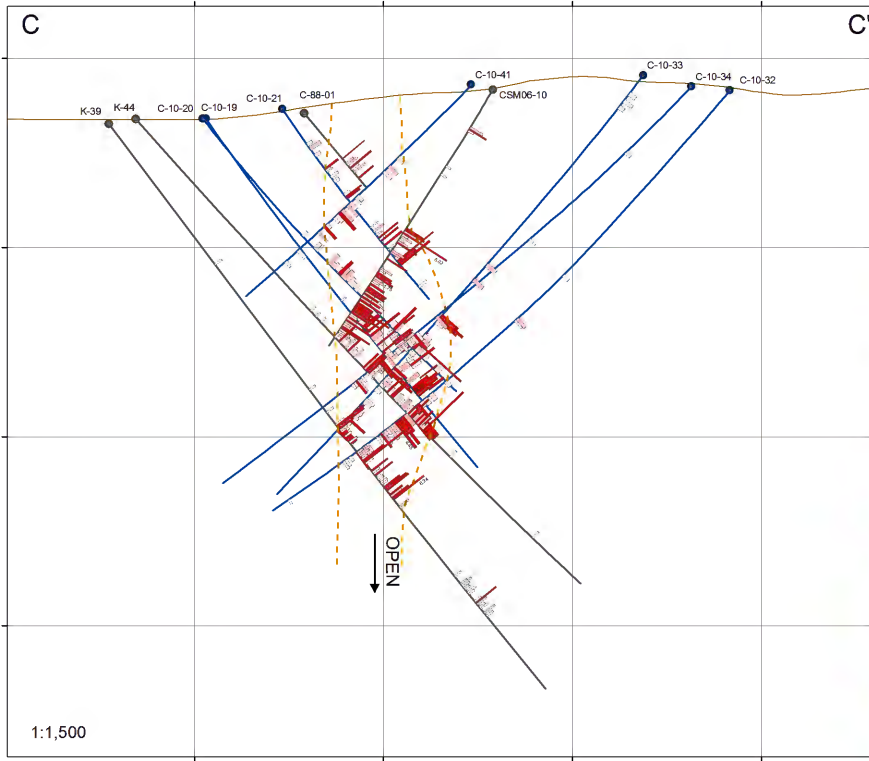
5388100

5387100



C

C'



## East Coldstream Deposit 2010 Drilling Program

### East Zone Cross Section

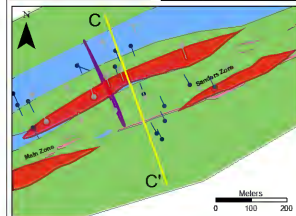
Section on: 160° Facing: 70°  
100m wide window

#### Legend

- Section Location
  - FDN Drill Holes
  - Historic Drill Holes
- #### Geological Units
- Diabase Dyke
  - Gabbro
  - Mafic / Intermediate Volcanic
  - Quartz-Feldspar Porphyry / Felsite Dyke
  - Mineralized Zone
  - Approximate Boundary of Mineralized Zone
- #### Assay Values (Au grt)
- 0.35 - 0.69
  - 0.70 - 1.00
  - > 1.01

#### Foundation Drill Holes

<b>C-10-19</b>	Azimuth: 160° Dip: -55° Depth: 233.78 m
<b>C-10-20</b>	Azimuth: 158° Dip: -52° Depth: 197.21 m
<b>C-10-21</b>	Azimuth: 163° Dip: -55° Depth: 127.10 m
<b>C-10-32</b>	Azimuth: 335° Dip: -50° Depth: 331.32 m
<b>C-10-33</b>	Azimuth: 333° Dip: -53° Depth: 294.75 m
<b>C-10-34</b>	Azimuth: 331° Dip: -45° Depth: 328.27 m
<b>C-10-41</b>	Azimuth: 340° Dip: -47° Depth: 463.68 m










## East Coldstream Deposit 2010 Drilling Program

### Main Zone Cross Section


Section on: 160° Facing: 70°  
50m wide window

#### Legend




-  Section Location
-  FDN Drill Holes
-  Historic Drill Holes

#### Geological Units

-  Diabase Dyke
-  Gabbro
-  Mafic \ Intermediate Volcanic
-  Quartz-Feldspar Porphyry/  
Felsite Dyke
-  Mineralized Zone

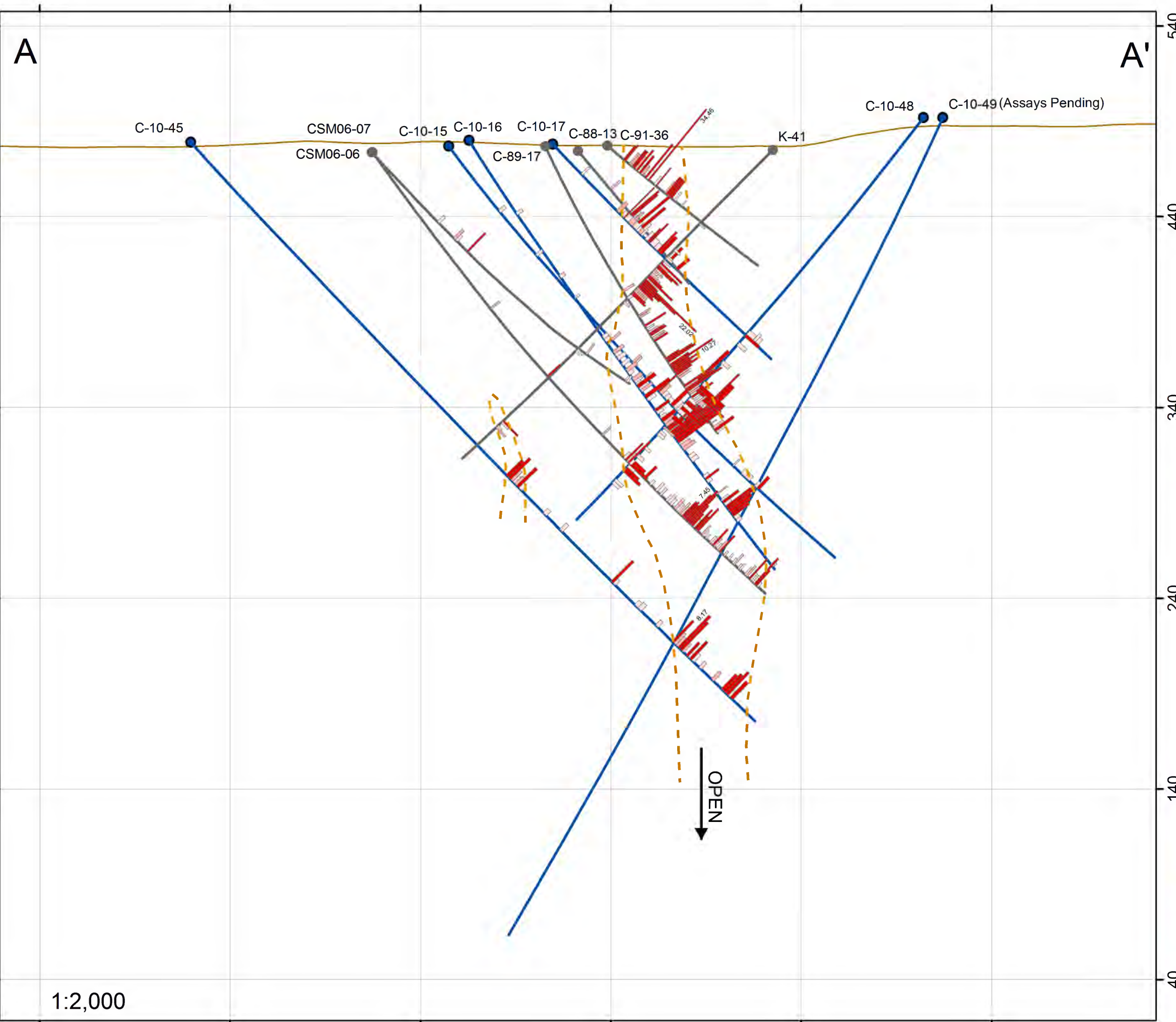
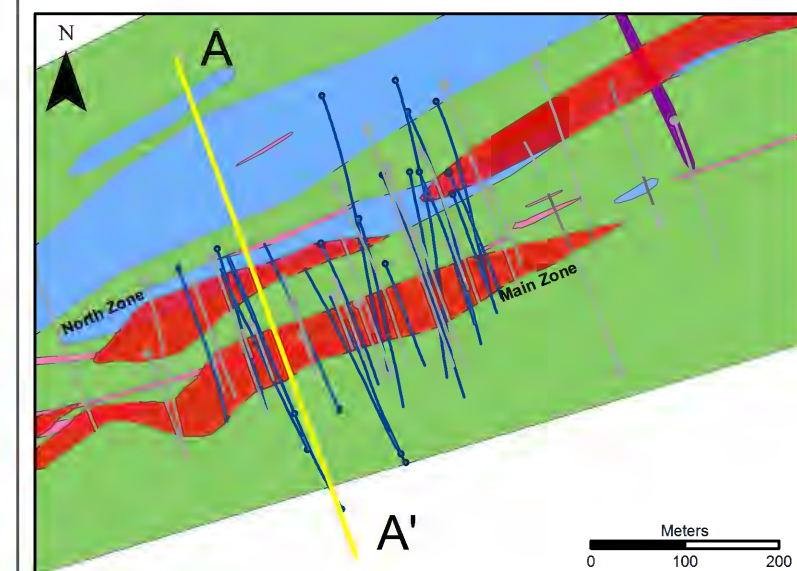
-  Approximate Boundary of  
Mineralized Zone

#### Assay Values ( Au g/t)

-  0.35 - 0.69
-  0.70 - 1.00
-  > 1.01

#### Foundation Drill Holes

- C-10-15**  
Azimuth: 160°  
Dip: -54°  
Depth: 297.79 m
- C-10-16**  
Azimuth: 155°  
Dip: -59°  
Depth: 276.46 m
- C-10-17**  
Azimuth: 157°  
Dip: -47°  
Depth: 160.63 m
- C-10-48**  
Azimuth: 335°  
Dip: -52°  
Depth: 279.57 m
- C-10-49**  
Azimuth: 327°  
Dip: -65°  
Depth: 486.82 m



1:2,000



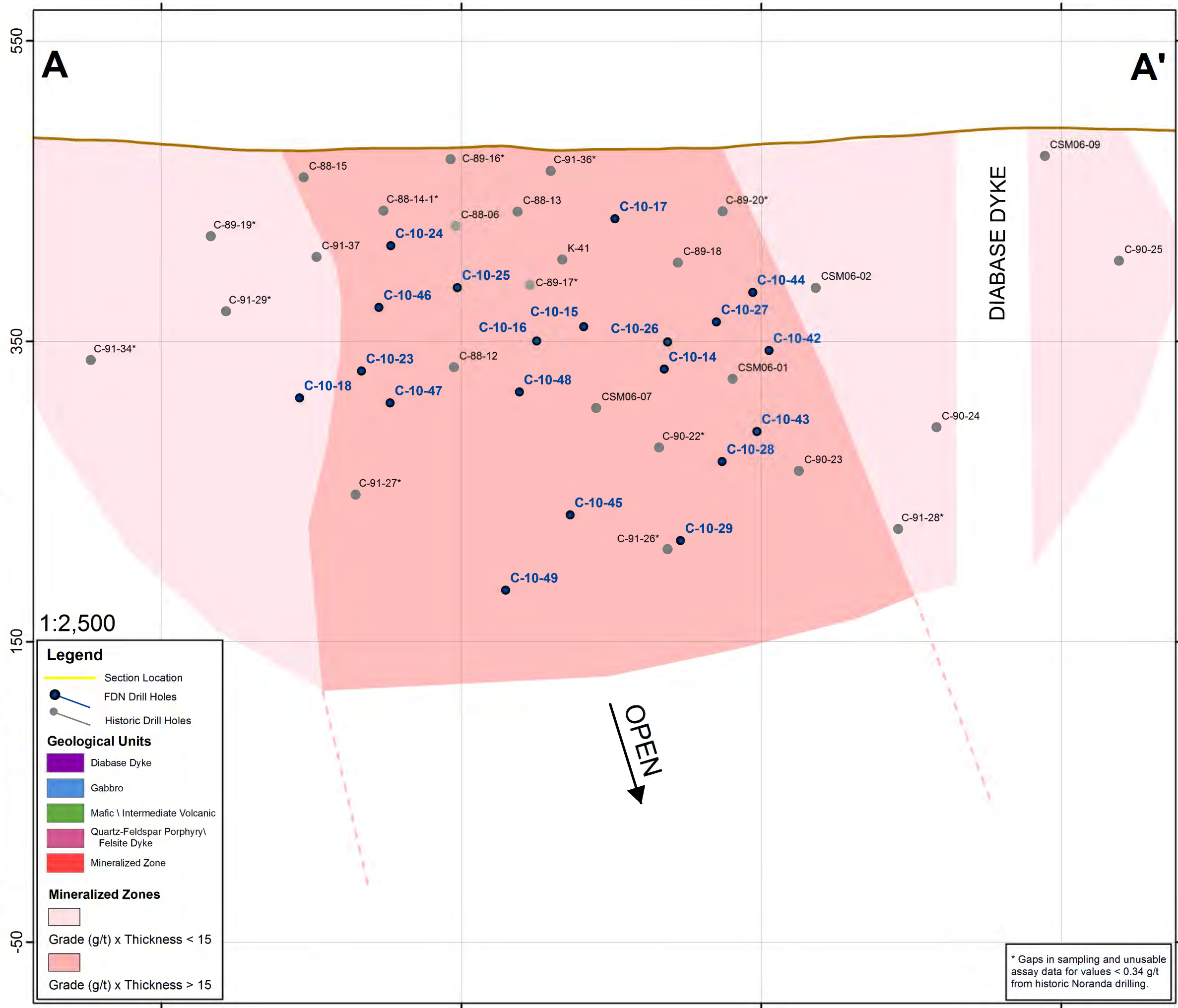
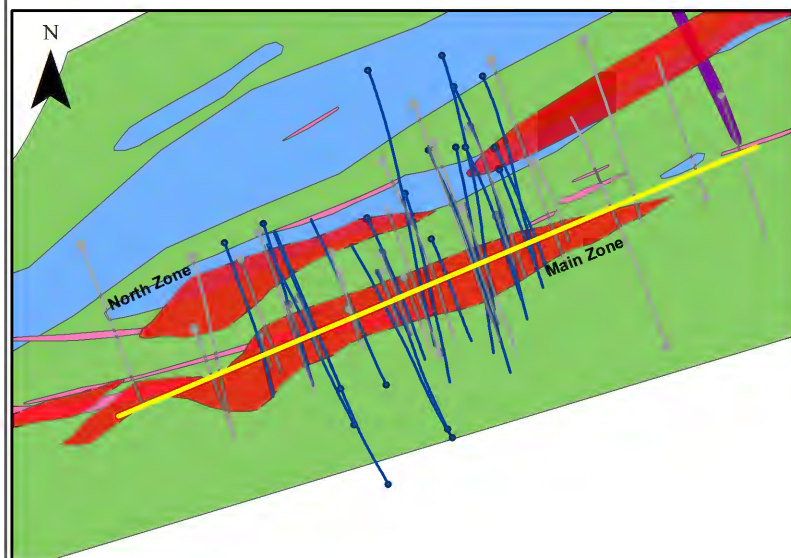
## East Coldstream Deposit 2010 Drilling Program

### Main Zone Long Section

Section on: 070° Facing: 345°  
NAD83 Zone 15N

### Significant Assay Results

Foundation Resources Inc.			
<b>C-10-14</b>	1.30g/t / 47.25m incl. 9.62g/t / 2.45m incl. 11.80g/t / 1.20m	<b>C-10-49</b>	1.04g/t / 45.65 m incl. 2.44g/t / 15.55 m
<b>C-10-15</b>	4.88g/t / 27.28m incl. 13.55g/t / 3.00m		1.01g/t / 49.90 m incl. 2.06g/t / 11.00 m
<b>C-10-16</b>	1.12g/t / 111.30m incl. 3.41g/t / 20.85m	<b>Historical</b>	
<b>C-10-26</b>	1.31g/t / 30.40m incl. 4.2g/t / 2.25m incl. 7.51g/t / 3.40m	<b>C-88-13</b>	1.04g/t / 28.85m
<b>C-10-45</b>	1.26g/t / 44.50m incl. 7.14g/t / 2.95m	<b>C-89-17</b>	1.10g/t / 55.90m incl. 4.11g/t / 5.00m
<b>C-10-46</b>	1.15g/t / 27.50m incl. 1.55g/t / 17.70m	<b>C-89-18</b>	1.87g/t / 36.50m incl. 12.40g/t / 2.60m
<b>C-10-48</b>	1.74g/t / 26.25m incl. 4.57g/t / 6.05m	<b>C-90-23</b>	1.05g/t / 20.50m
		<b>C-91-36</b>	2.05g/t / 39.90m incl. 4.13g/t / 12.80m
		<b>K-41</b>	1.59g/t / 39.00m incl. 11.07g/t / 3.00m



**Legend**

- Section Location
- FDN Drill Holes
- Historic Drill Holes

**Geological Units**

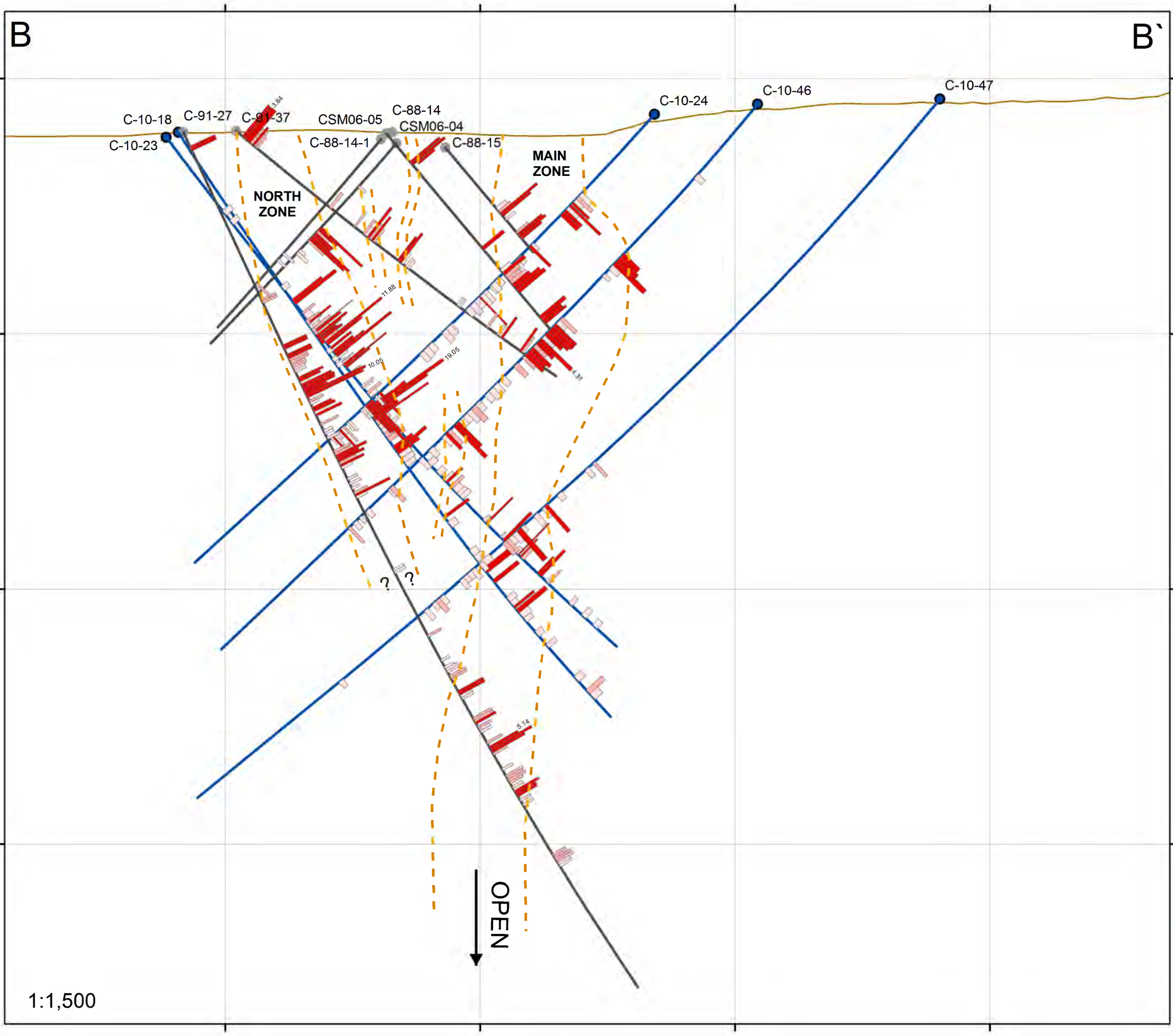
- Diabase Dyke
- Gabbro
- Mafic \ Intermediate Volcanic
- Quartz-Feldspar Porphyry \ Felsite Dyke
- Mineralized Zone

**Mineralized Zones**

- Grade (g/t) x Thickness < 15
- Grade (g/t) x Thickness > 15

\* Gaps in sampling and unusable assay data for values < 0.34 g/t from historic Noranda drilling.





## East Coldstream Deposit 2010 Drilling Program

### North / Main Zone Cross Section

Section on: 160° Facing: 70°  
100m wide window

**Legend**

- Section Location
- FDN Drill Holes
- Historic Drill Holes

**Geological Units**

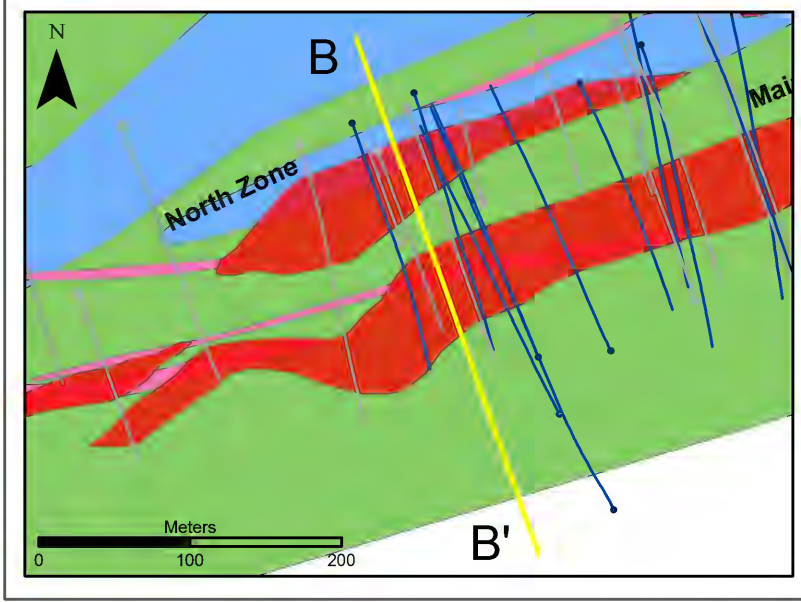
- Diabase Dyke
- Gabbro
- Mafic \ Intermediate Volcanic
- Quartz-Feldspar Porphyry / Felsite Dyke
- Mineralized Zone
- Approximate Boundary of Mineralized Zone

**Assay Values ( Au g/t)**

- 0.35 - 0.69
- 0.70 - 1.00
- > 1.01

**Foundation Drill Holes**

<b>C-10-18</b>	Azimuth: 160° Dip: -58° Depth: 285.60 m
<b>C-10-23</b>	Azimuth: 160° Dip: -53° Depth: 267.31 m
<b>C-10-24</b>	Azimuth: 337° Dip: -48° Depth: 252.07 m
<b>C-10-46</b>	Azimuth: 335° Dip: -50° Depth: 300.84 m
<b>C-10-47</b>	Azimuth: 336° Dip: -50° Depth: 401.43 m





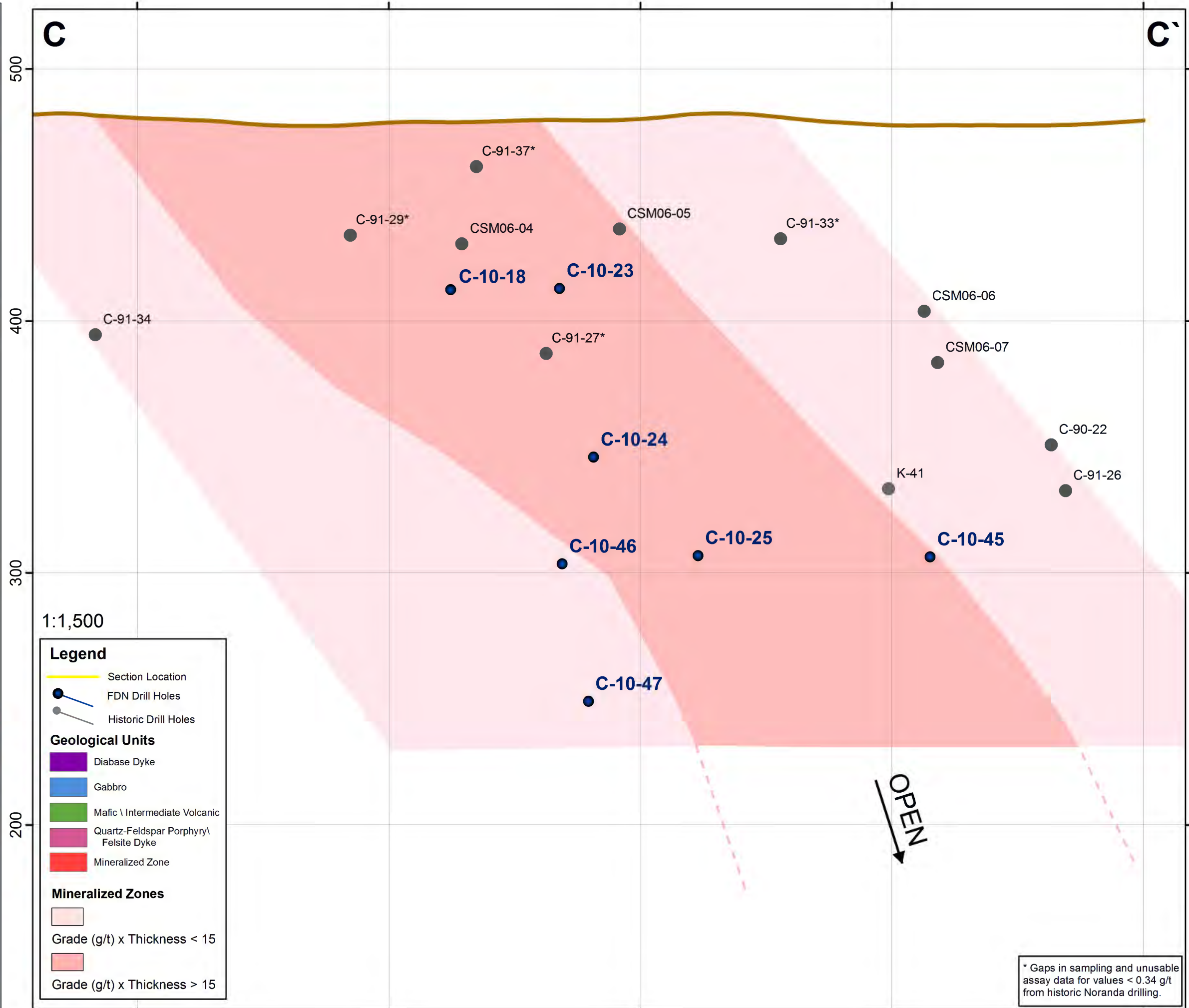
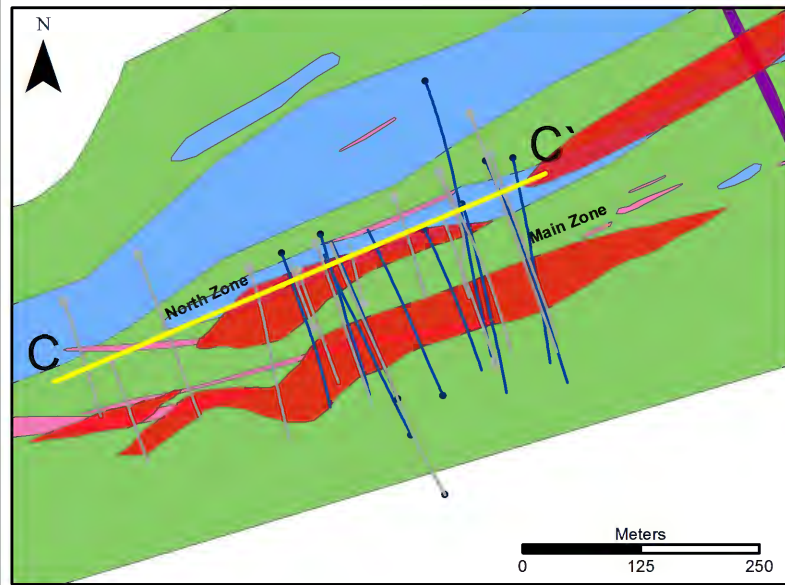
**East Coldstream Deposit  
2010 Drilling Program**

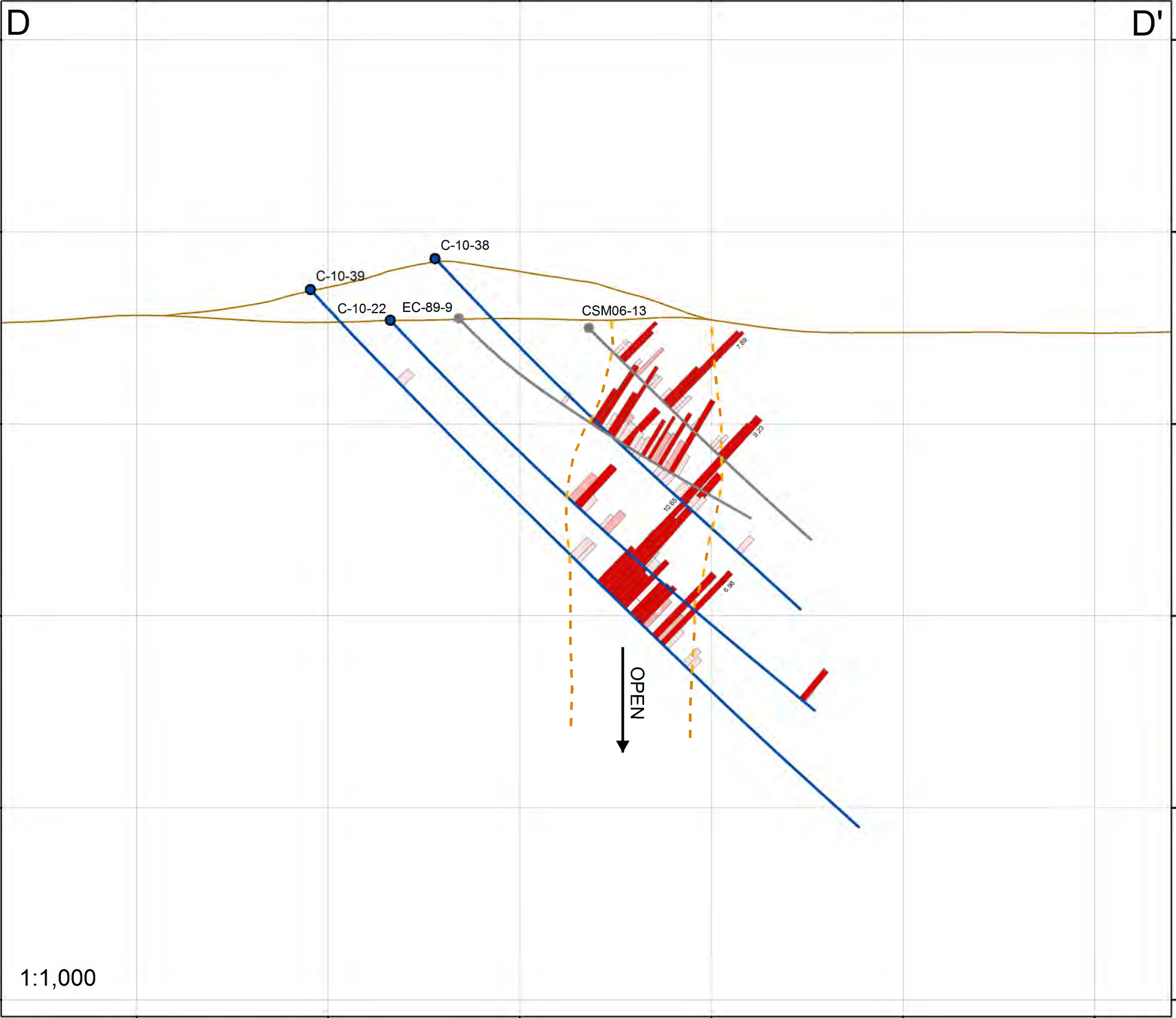
**North Zone Long Section**

Section on: 070° Facing: 345°  
NAD83 Zone 15N

**Significant Assay Results**

Foundation Resources Inc.		Historical	
<b>C-10-18</b>	1.10g/t / 67.95m incl. 9.33g/t / 5.05m	<b>C-91-27</b>	1.24g/t / 39.00m incl. 4.73g/t / 6.00m
<b>C-10-23</b>	1.93g/t / 34.50m incl. 5.25g/t / 3.00m	<b>C-91-29</b>	1.41g/t / 28.00m
<b>C-10-24</b>	1.09g/t / 26.15m incl. 4.26g/t / 4.80m	<b>CSM06-04</b>	1.27g/t / 19.60m
<b>C-10-25</b>	3.06g/t / 13.00m incl. 5.47g/t / 6.90m		





## East Coldstream Deposit 2010 Drilling Program

### Sanders Zone Cross Section

Section on: 160° Facing: 70°  
100m wide window

**Legend**

- Section Location
- FDN Drill Holes
- Historic Drill Holes

**Geological Units**

- Diabase Dyke
- Gabbro
- Mafic \ Intermediate Volcanic
- Quartz-Feldspar Porphyry/  
Felsite Dyke
- Mineralized Zone
- Approximate Boundary of Mineralized Zone

**Assay Values ( Au g/t)**

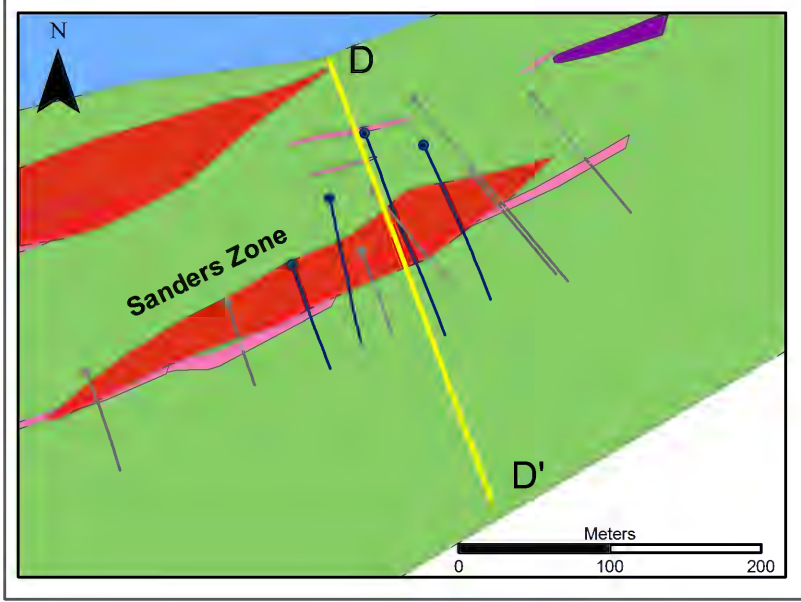
- 0.35 - 0.69
- 0.70 - 1.00
- > 1.01

**Foundation Drill Holes**

**C-10-22**  
Azimuth: 155°  
Dip: -47°  
Depth: 150.55 m

**C-10-38**  
Azimuth: 167°  
Dip: -46°  
Depth: 132.59 m

**C-10-39**  
Azimuth: 159°  
Dip: -48°  
Depth: 132.59 m



1:1,000



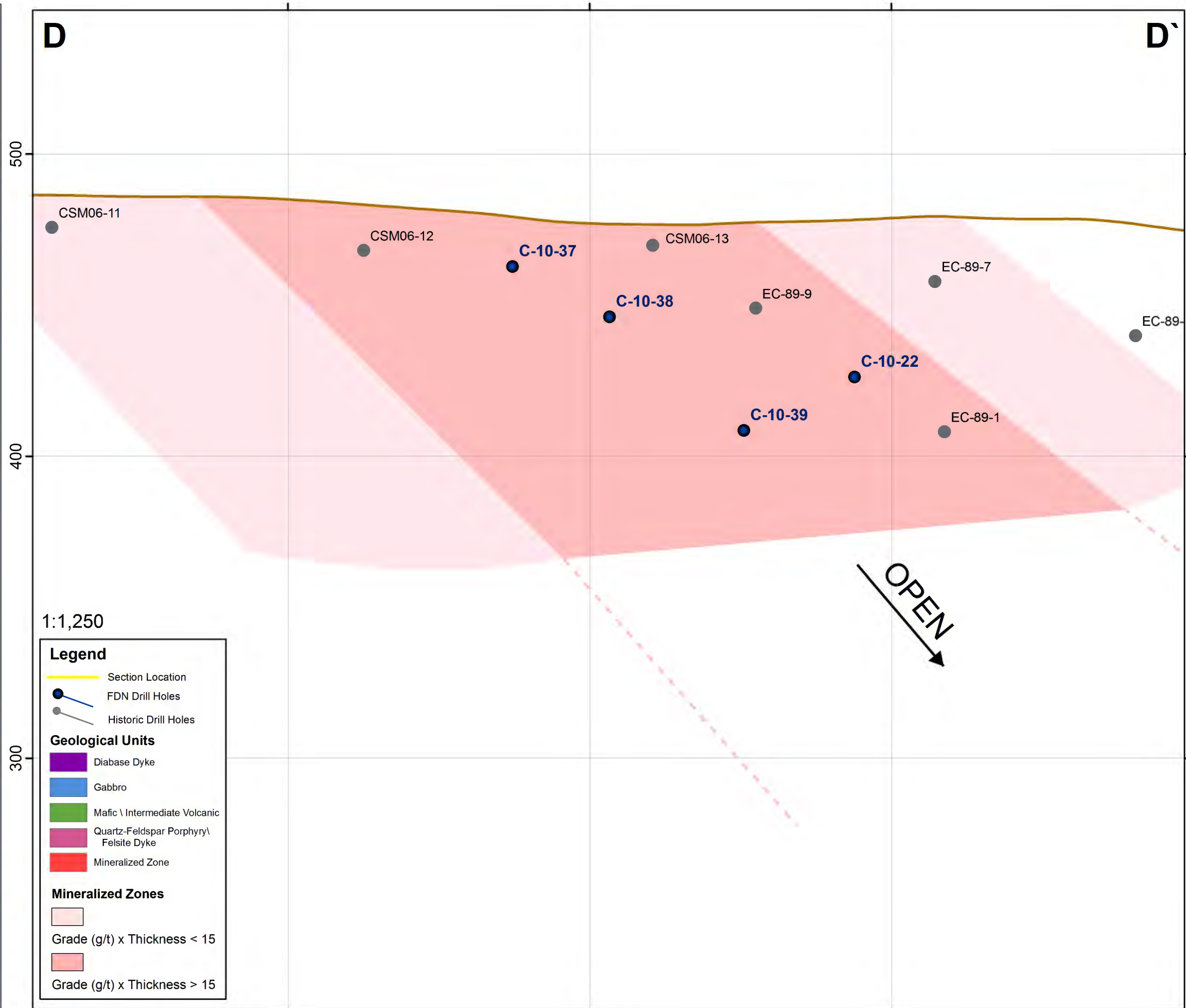
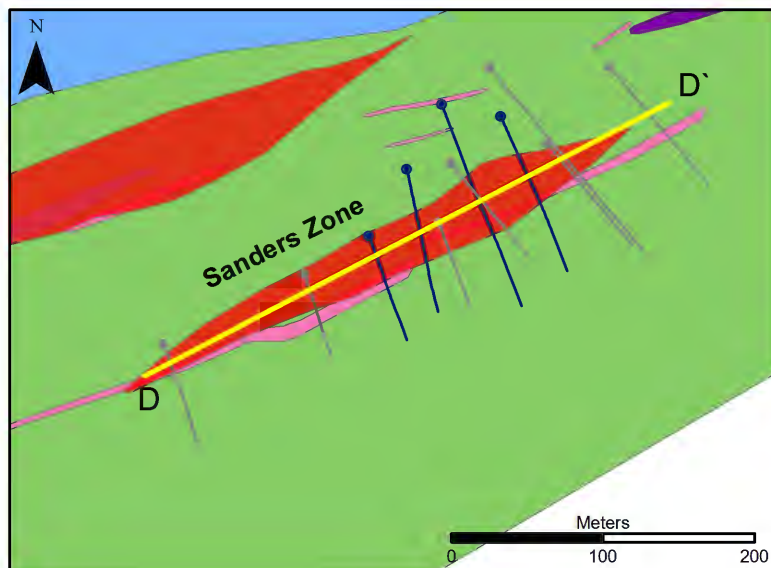
**East Coldstream Deposit  
2010 Drilling Program**

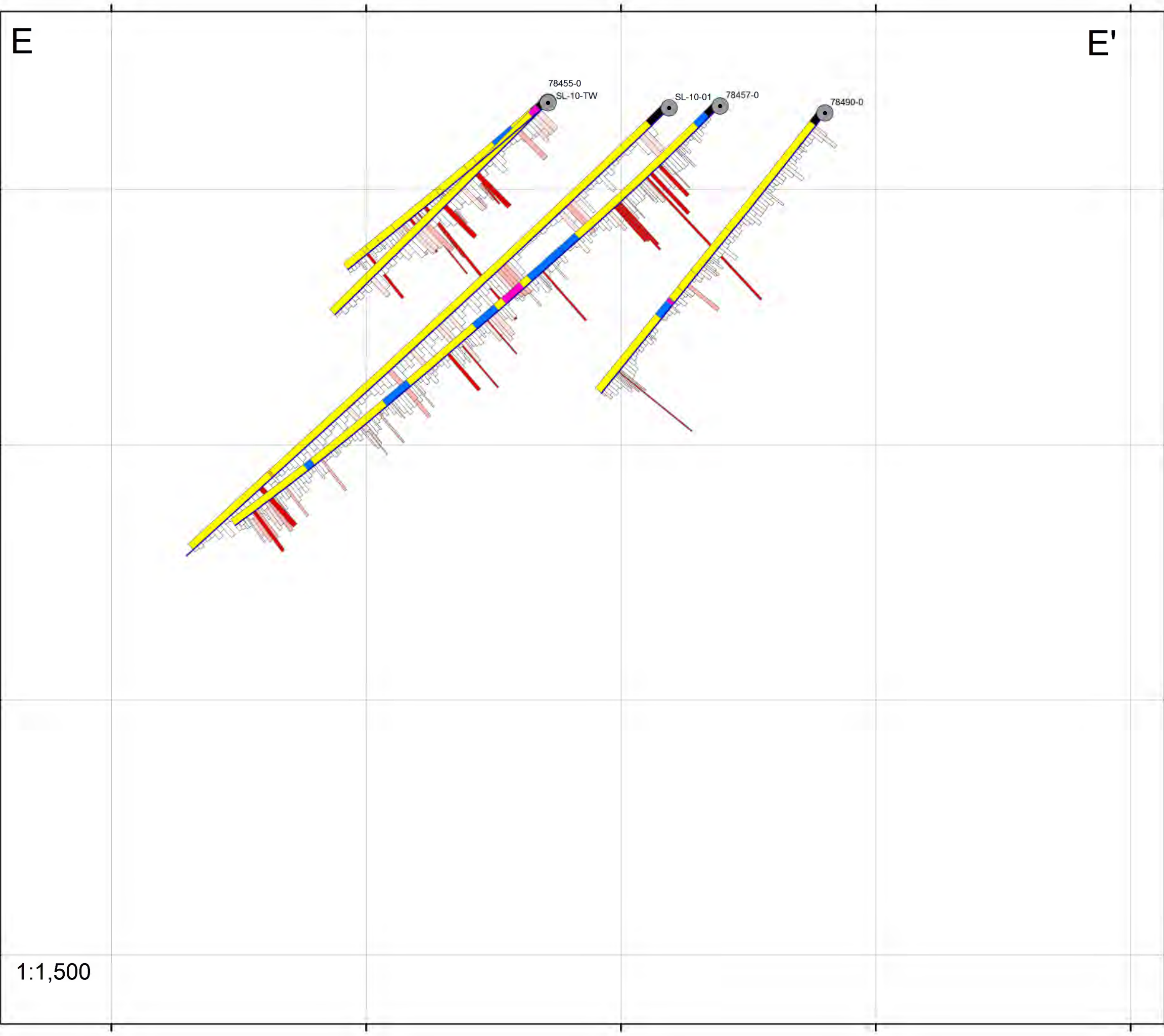
**Sanders Zone Long Section**

Section on: 065° Facing: 340°  
NAD83 Zone 15N

**Significant Assay Results**

Foundation Resources Inc.		Historical	
C-10-22	1.16g/t / 27.46m	EC-89-9	1.27g/t / 27.98m
C-10-38	1.06g/t / 27.35m	CSM06-13	1.01g/t / 23.00m
incl.	9.23g/t / 2.20m		
C-10-39	2.10g/t / 35.65m		
incl.	4.42g/t / 9.00m		





## Span Lake 2010 Drilling Program

**Span Lake Cross Section  
700 W**  
Section on: 130° Facing: 40°  
100m wide window

**Legend**

— Drill Trace

**Geological Units**

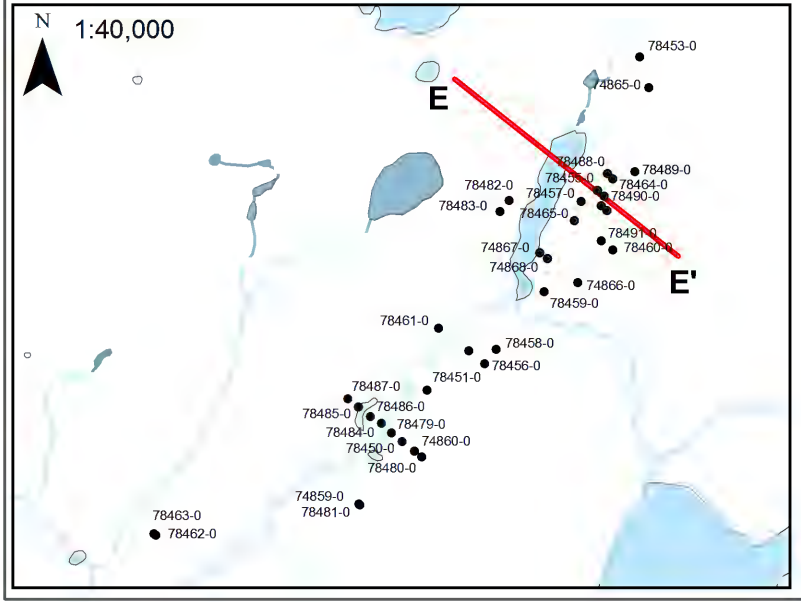
- Overburden
- Mafic Volcanic
- Felsic Volcanic
- Quartz-Feldspar Porphyry  
Felsite\ Syenite\ Granodiorite
- Granodiorite
- Diorite

**Assay Values ( Au g/t)**

- 0.35 - 0.69
- 0.70 - 1.00
- > 1.01

**Drill Holes**

<b>78455-0</b>	Azimuth: 310° Dip: -45° Depth: 102.40 m
<b>78457-0</b>	Azimuth: 310° Dip: -45° Depth: 209.40 m
<b>78490-0</b>	Azimuth: 310° Dip: -55° Depth: 140.50 m
<b>SL-10-TW</b>	Azimuth: 310° Dip: -45° Depth: 117.95 m
<b>SL-10-01</b>	Azimuth: 310° Dip: -45° Depth: 258.71 m



1:1,500

400  
300  
200  
100



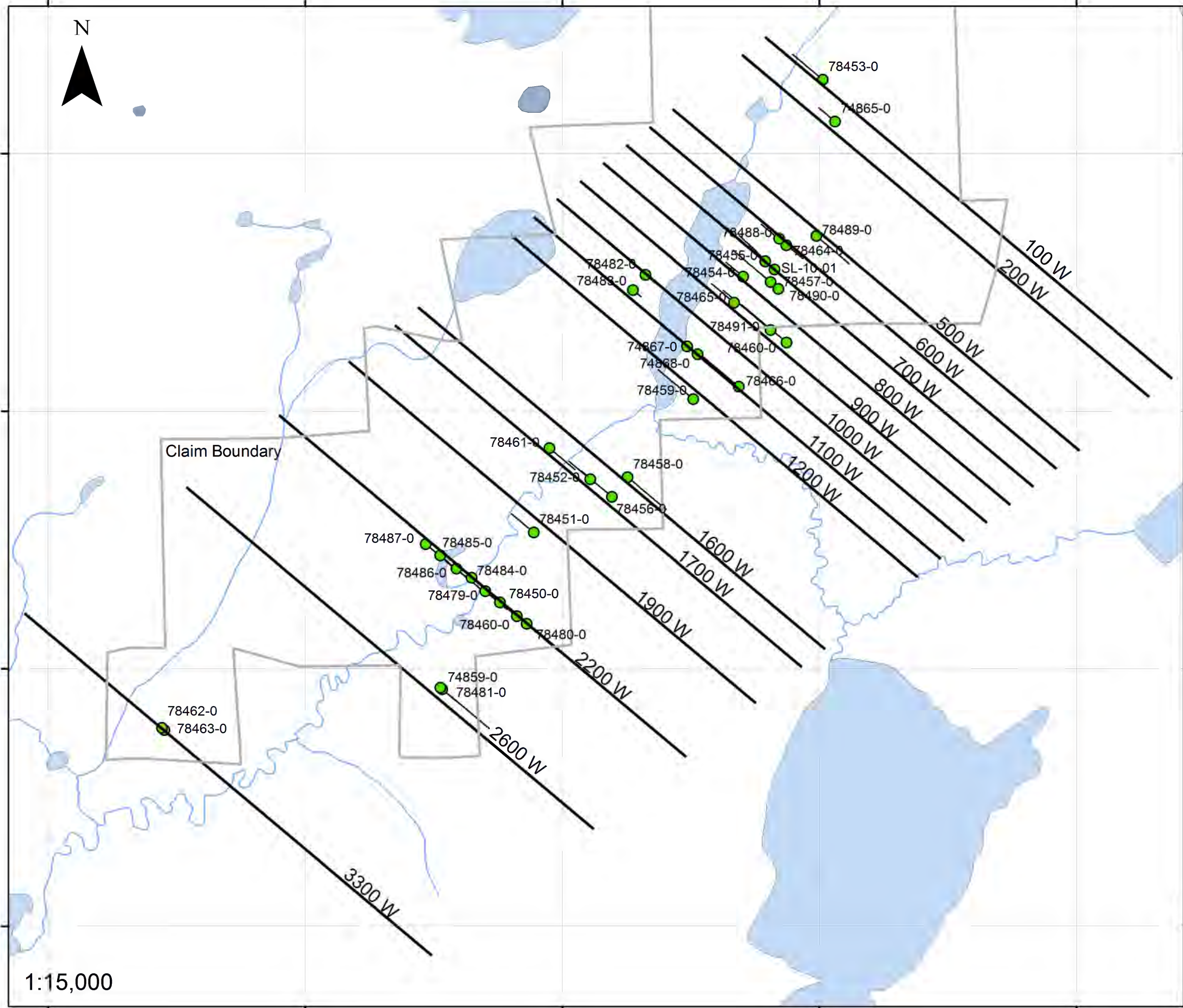
669400 670400 671400 672400 673400



### Span Lake 2010 Drilling Program

### Span Lake Cross Section Plan Map

Sections on: 130° Facing: 40°  
100m wide windows



5382100  
5381100  
5380100  
5379100

1:15,000