

N.T.S. 31C/11

**REPORT ON
“B” HORIZON SOIL SURVEY
AND ROCK SAMPLING
BLACK RIVER SOUTH PROPERTY
GRIMSTHORPE TOWNSHIP, ONTARIO**

**Written by: Robert J. Dillman
8901 Reily Drive
Mount Brydges, Ontario
January 27, 2011**

INDEX

	page
Summary	2
Location, Property Ownership, Access	2
Land Status and Topography	6
Regional and Local Geology	6
Economic Mineralization	11
History of Exploration	11
Survey Dates and Personnel	13
Survey Logistics	13
Results of Soil Survey	14
Results of Rock Sampling	14
Discussion of Results	17
Recommendations	17
References	19
Certificate of Author	20
Figure 1. PROPERTY LOCATION MAP	3
Figure 2. CLAIM MAP	4
Figure 3. TOPOGRAPHY MAP AND LAND STATUS	7
Figure 4. REGIONAL GEOLOGY MAP	8
Figure 5. PROPERTY GEOLOGY MAP	10
Figure 6. GEOLOGY OF HERRON POND	12
Figure 7. SOIL SURVEY RESULTS	15
Figure 8. COMPILATION MAP; GAMMA-RAY + GEOLOGY	16
Table 1. Claim Logistics	5
Table 2. Rock Sample Descriptions and Assay Results	16
Table 3. Budget For Proposed Exploration	18
APPENDIX	
I. G.P.S. WAYPOINT DATA	21
II. DESCRIPTION OF SOIL SAMPLES	23
III. ASSAY CERTIFICATE FOR SOIL AND ROCK SAMPLES	24
IV. SOIL SURVEY: SOIL & ROCK SAMPLE LOCATION MAP	scale 1 : 4,000
IIV. SOIL SURVEY: ASSAY RESULTS FOR SOIL & ROCK SAMPLES	scale 1 : 4,000

Summary

This report summarizes the results of a “B” horizon soil survey for gold over sections of the Black River South Property in Grimsthorpe Township, Ontario. A total of 58 soil samples and 4 rock samples were collected during the survey. The soil samples were collected on four separate lines which tested the unconformity between the Grimsthorpe Group and the Canniff Lake Complex in the area south of the Herron Pond gold showing. The soil and rock samples were collected by James M. Chard on December 8 and December 9, 2011.

Location, Property Ownership, Access

The Black River South Property is located in the Southern Ontario Mining Division approximately 185 kilometres northeast of Toronto, Ontario, Canada (Figure 1). The property is situated in Grimsthorpe Township in Hastings County.

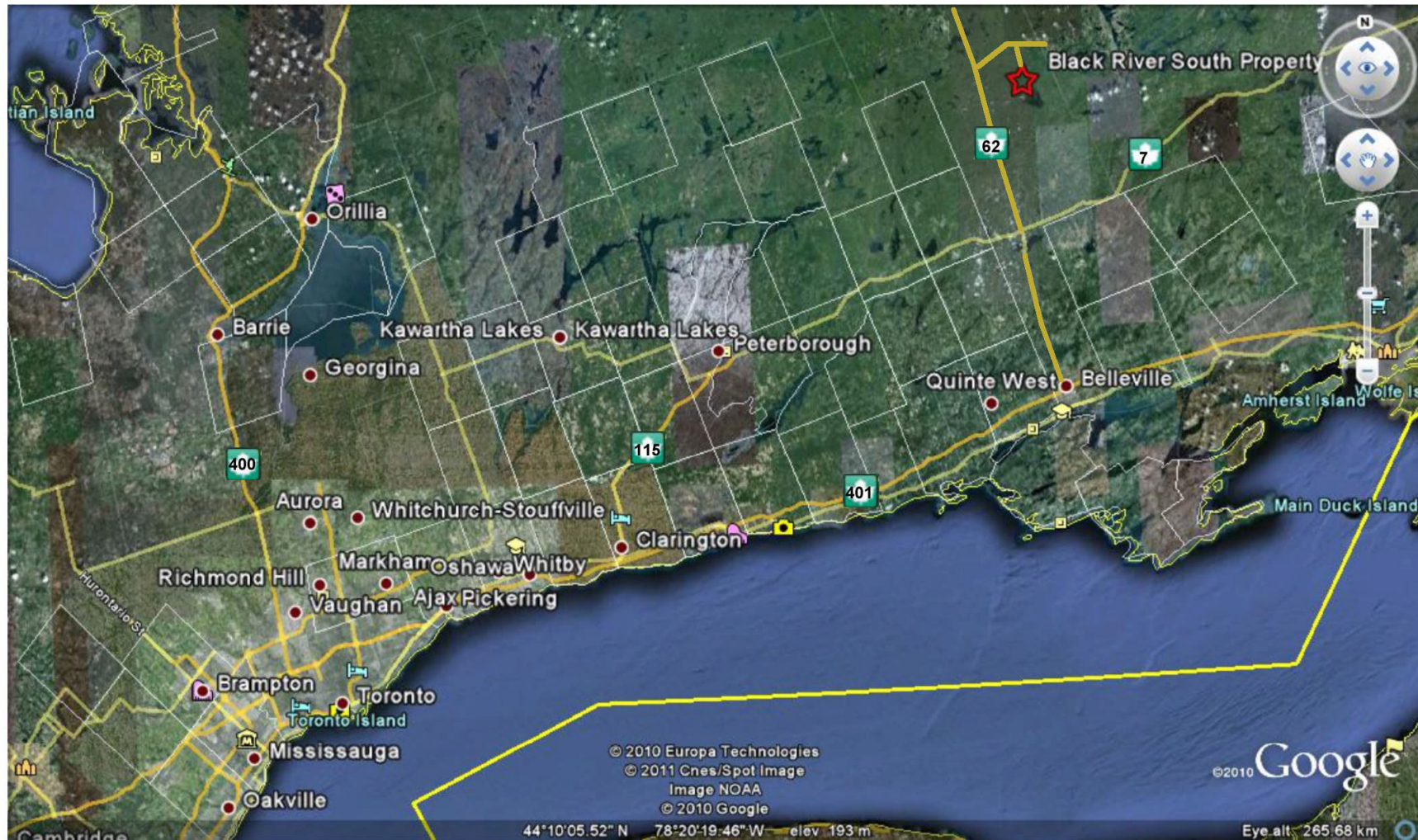
The property consists of five contiguous non-patented mining claims covering a total area of 340 hectares (Figure 2). Table 1. summarizes the logistics of the mining claims. Titles to the mining claims comprising the Black River South property are held equally by:

Robert J. Dillman of Mount Brydges, Ontario,

James M. Chard of Cordova Mines, Ontario

The property is currently under a sales contract to Union Glory Gold Limited of Toronto, Ontario.

The property has good seasonal road access via the Lingham Lake Forest Access Road which crosses through the property. The Lingham Lake Access Road intersects with the Skootamatta Forest Access Road 4.5 km north of the property. The Skootamatta Forest Access Road is also a seasonal road. The Skootamatta Forest Access Road extends from the town of Gilmour located on the Weslemkoon Road to the town of Northbrook located on Provincial Highway 41.



**FIGURE 1.
PROPERTY LOCATION MAP
BLACK RIVER SOUTH PROPERTY
GRIMSTHORPE TWP., ONTARIO
UNION GLORY GOLD LIMITED**

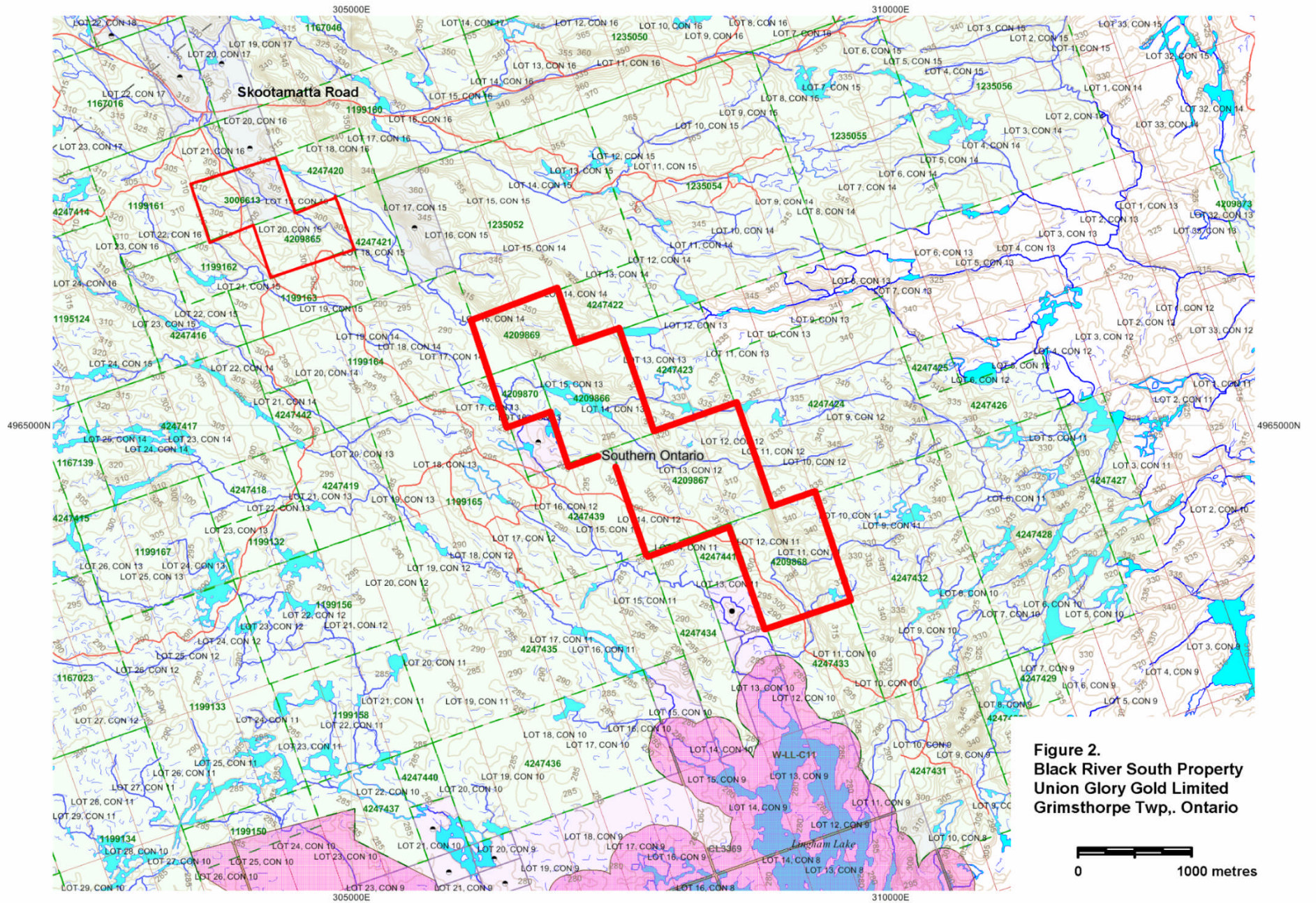


Figure 2.
Black River South Property
Union Glory Gold Limited
Grimsthorpe Twp., Ontario



Table 1.

**Claim Logistics
Black River South Property
Grimsthorpe Twp., Ontario**

Claim Number	Location	Number of Units	Size Hectares	Assessment Due Date	Amount Due	Assessment Bank
4209866	Lot's 14 & 15, Conc. XIII	4	80 ha	02/ 09/ 2012	\$1600	\$730
4209867	Lot's 12, 13 & 14, Conc. XII	6	120 ha	02/ 09/ 2012	\$2400	\$1,096
4209868	Lot's 11 & 12, Conc. XI	4	80 ha	02/ 09/ 2012	\$1600	\$730
4209869	Lot's 15 & 16, Conc. XIV S.1/2	2	40 ha	02/ 09/ 2012	\$800	\$366
4209870	Lot's 16, Conc. XIII N.1/2	<u>1</u>	<u>20 ha</u>	02/ 09/ 2012	<u>\$400</u>	<u>\$183</u>
		17 Units	340 ha		\$6,800	\$3,105

Title:

50% Robert J. Dillman
8901 Reily Drive
Mount Brydges, Ontario
N0L 1W0

50% James M. Chard
3495 Country Road 48
Cordova Mines, Ontario
K0L 1Z0

The Skootamatta Road is not maintained in the winter. A four-wheel drive truck was used to access the property during this survey.

Land Status and Topography

All area covered the Black River South Property is designated as Crown Land.

The north-central region of the property is crossed by the Black River. The river flows towards the south and is generally slow moving and swampy.

The Black River South Property is at a mean elevation of 300 metres above sea level (Figure 3). The west half of the property has gentle topography with relief ranging approximately 20 metres. East of the river the property is crossed by a steep, northwest-southeast orientated ridge of outcrop ranging approximately 50 metres high.

Most of the property is covered by mixed forest dominated by spruce, pine, maple and poplar. Areas east of the river have been clear-cut and numerous new skidder trails have been constructed during recent logging activities.

Regional and Local Geology

The Black River South Property is underlain by Proterozoic geological units belonging to the Grimsthorpe Domain of the Central Metasedimentary Belt of the Grenville Structural Province (Figure 4).

The Grimsthorpe Domain is dominated by mafic metavolcanic and volcanoclastic metasedimentary rocks older than 1270 Ma (Easton 1992). The Grimsthorpe Domain includes:

- the younger Grimsthorpe Group, consisting mainly of metavolcanic-claste metasedimentary rocks and minor metavolcanic flows of the Tudor Formation, minimum age 1279 +/-13 Ma (Easton 2004).
- the older Canniff Complex dominated by massive and pillowed tholeiitic metabasalts, metagabbro and metaperidotite.

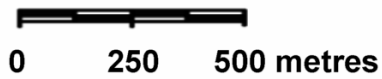
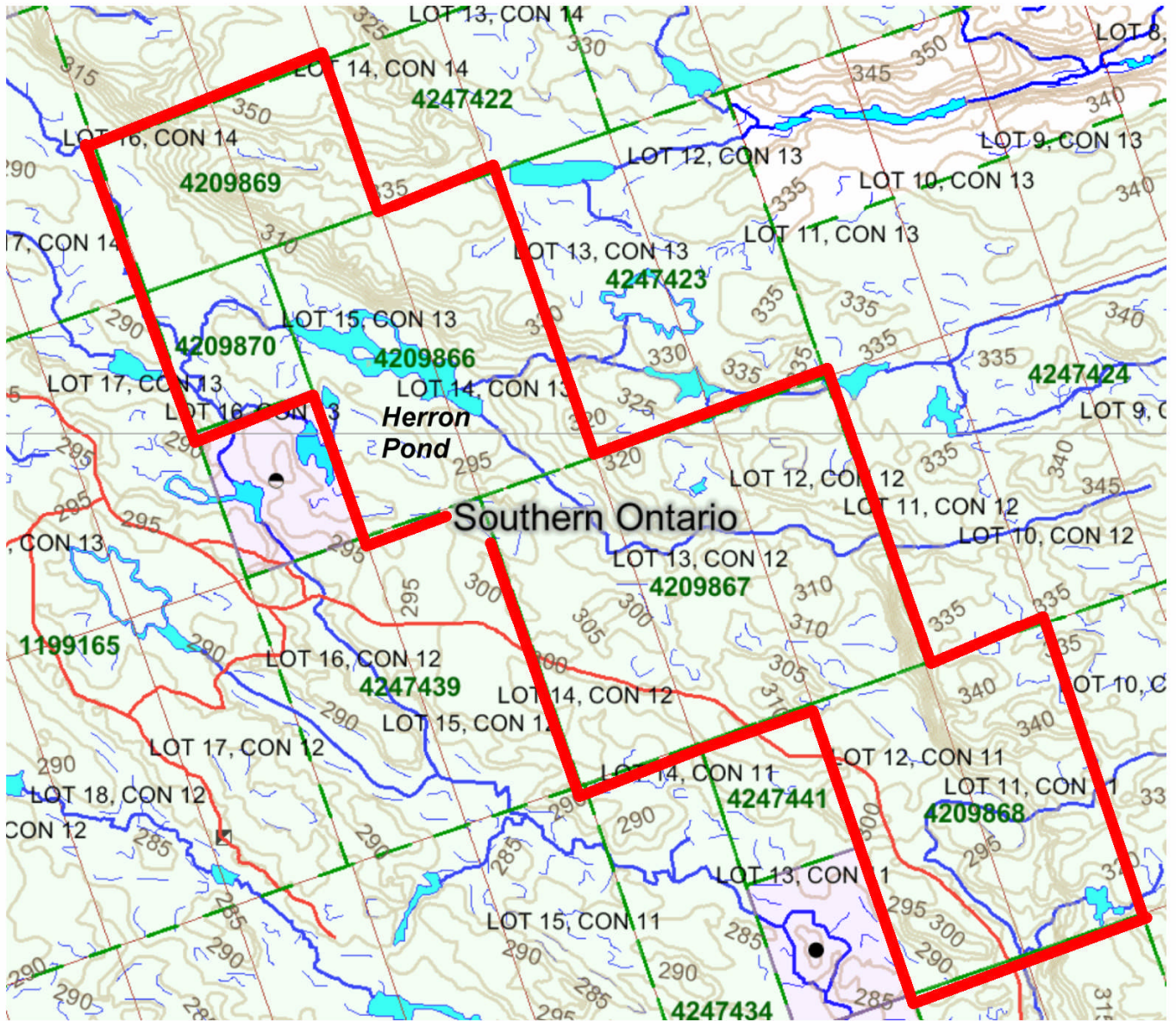


Figure 3.
Topography and Land Status
Black River South Property
Union Glory Gold Limited
Grimsthorpe Twp., Ontario

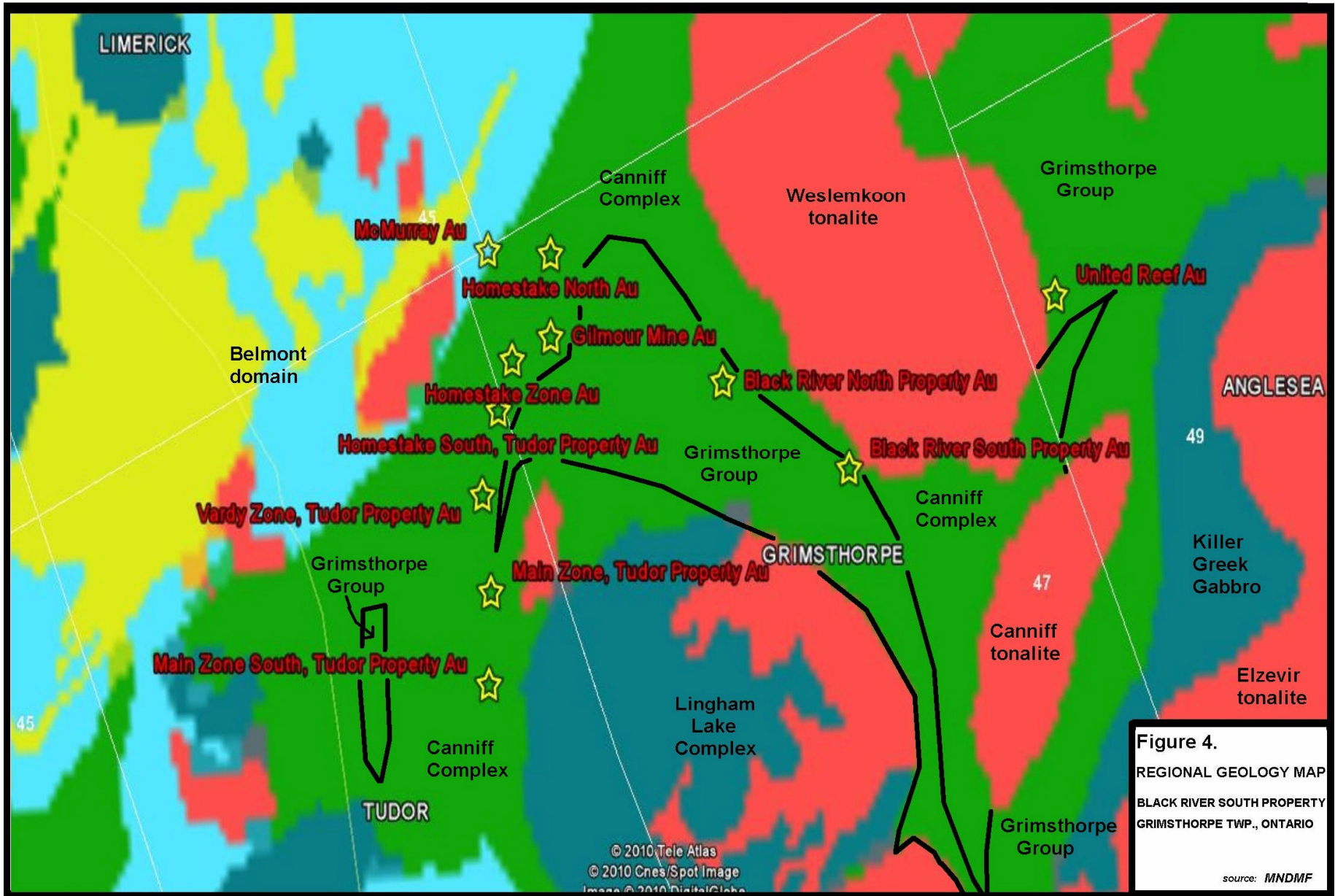


Figure 4.
 REGIONAL GEOLOGY MAP
 BLACK RIVER SOUTH PROPERTY
 GRIMSTHORPE TWP., ONTARIO
 source: MNDMF

 Gold Occurrence



The property is situated over the unconformity between the Grimsthorpe Group and the Canniff Complex (Figure 6). In the north section of the property, the unconformity follows the base of the northwest trending ridge situated east of Herron Pond. Outcrops northeast of the unconformity consist of metabasalts and metagabbro of the Canniff Complex. Outcrops west of the unconformity consist of northwest trending schistose metasedimentary units and metavolcanic flows of the Grimsthorpe Group. In the south section of the property, the position of the unconformity is unknown due to little exploration and increasing overburden and swamp.

The Grimsthorpe Domain, notably along the Grimsthorpe-Canniff unconformity has been subjected to a variety of mafic and felsic intrusive rocks including:

- northwest trending felsic aplite dikes
- east-west striking gabbroic dikes
- small, circular gabbroic plutons

The Grimsthorpe Domain in the north area of the property is sandwiched to the west by gabbroic and dioritic rocks of the Lingham Lake Complex and to the northeast by tonalitic and granodioritic rocks of the Weslemkoon Tonalite.

Rock units on the property generally trend northwest-southeast and dip vertical to steeply southwest. In south section of the property, the strike of the Grimsthorpe Domain is almost 90° to the trend of the Canniff Complex.

The Grimsthorpe Domain in the project area has been subjected to amphibolite-biotite facies metamorphism. Metasedimentary units proximal to the Grimsthorpe-Canniff unconformity are variably sheared by local northwest trending structures but are not extensively carbonated like other shear zones in the region. The entire sequence is crossed by southwest to east-west orientated strike-slip faults. Some of the younger faults have displaced the unconformity. The crosscutting faults occur as tight, brittle fractures with no apparent deformation and as intense shear zones up to 25 metres wide with strong ductile deformation, carbonate and chlorite alteration and extensive quartz-carbonate veining.

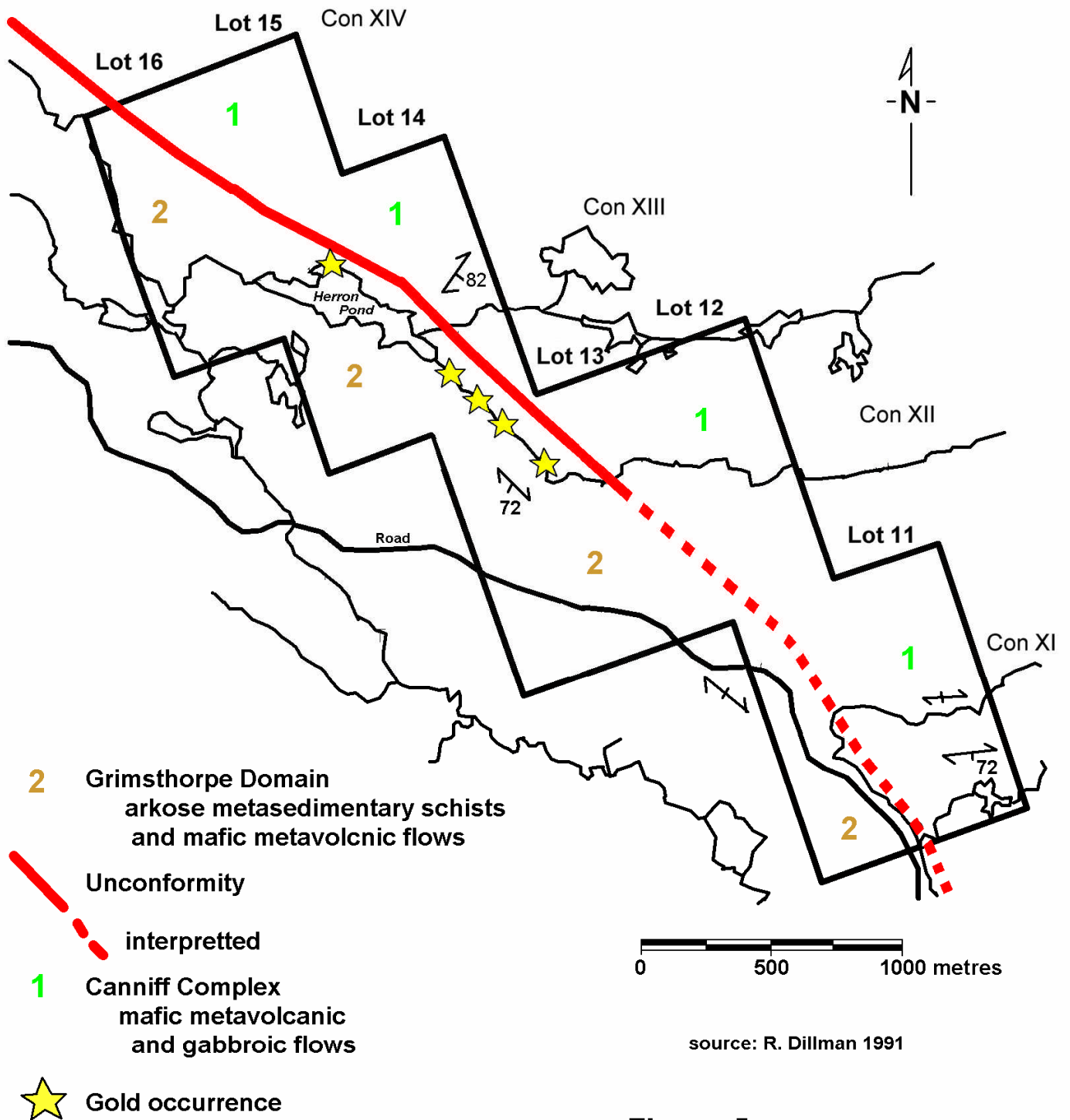


Figure 5.
Property Geology
Black River South Property
Union Glory Gold Limited
Grimsthorpe Twp., Ontario

Economic Mineralization

In the vicinity of Herron Pond, a series of gold occurrences have been discovered in metasedimentary rocks situated west of the Grimsthorpe-Canniff unconformity (Figure 6). The gold mineralization occurs in a variety of settings in the metasedimentary unit including:

- deformed, saccharoidal quartz veins mineralized with pyrite and arsenopyrite
- bluish-grey quartz stringers mineralized with pyrite and arsenopyrite
- silicified and breccia zones mineralized with pyrite and arsenopyrite.
- white crystalline quartz veins mineralized with pyrite, chlorite and carbonate.

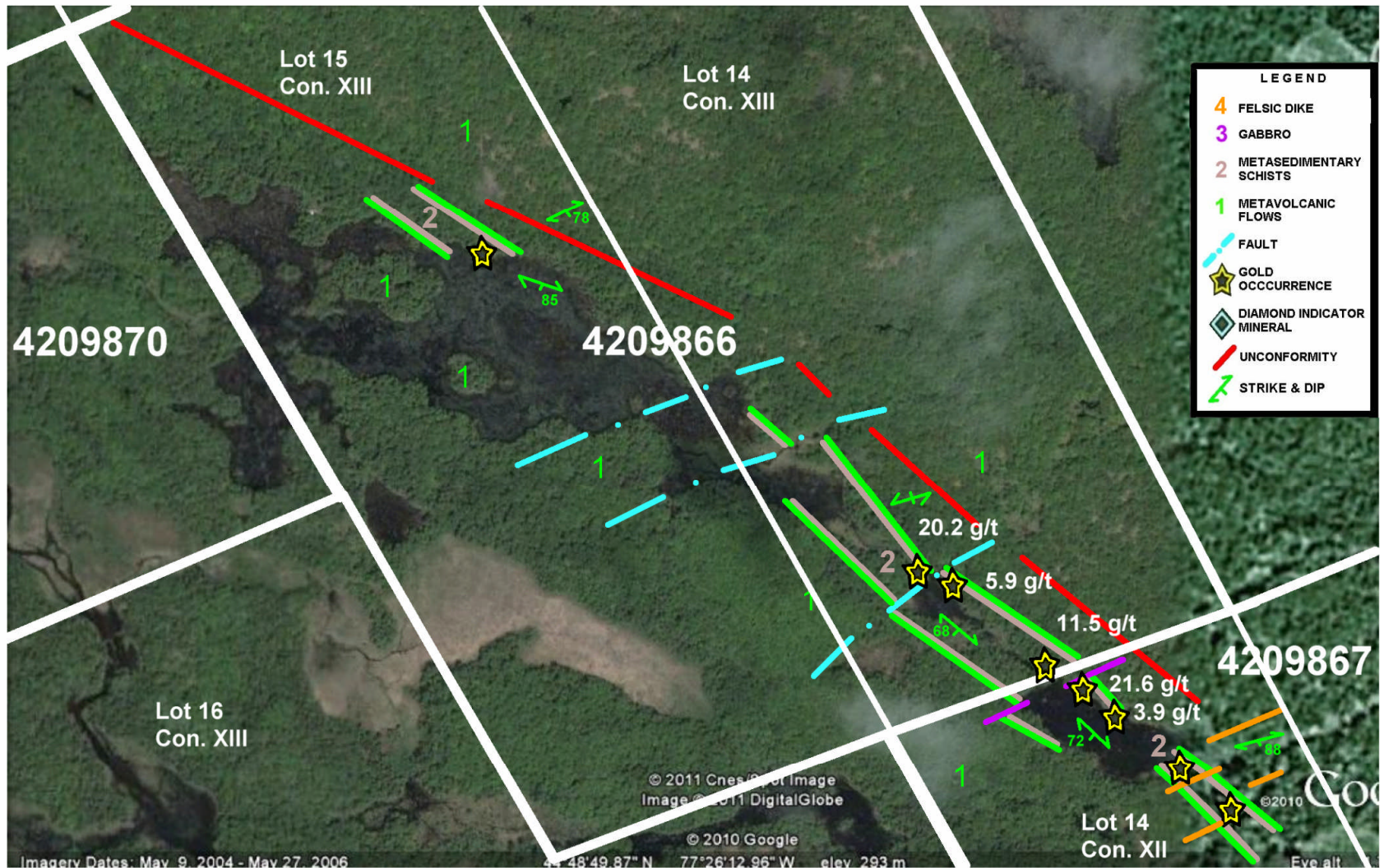
Assays have shown a wide variation in gold content ranging as high as 21.6 g/t gold. A sample of quartz with traces of sphalerite returned 5 oz/t silver and 3% zinc.

The gold bearing zone has been traced on surface roughly 1,300 metres. On a larger scale, the mineralization is part of a series of gold occurrences found close to the unconformity within a distance of 5 km from the property.

History of Exploration

In 1941 and 1942, the geology of Grimsthorpe Township and surrounding area was mapped by V. B. Meen on behalf of the Ontario Department of Mines (Meen, 1942). The area was re-mapped in 1990 by R. M. Easton of the Ontario Geological Survey (Easton and Ford, 1990). Prior to 1991, there is no record of mineral exploration in the area covered by the Black River South Property.

In 1991, gold was discovered along the Black River by the author. Between 1991 and 2003, various low-cost surveys have been completed to determine the extent of gold mineralization and fulfil the rigorous duties of assessment work required to maintain claims over the gold occurrences. The surveys completed on the property include:



source: R. Dillman 1992

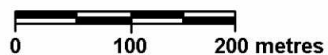


Figure 6.
Geology of Herron Pond Area
Black River South Property
Union Glory Gold Limited
Grimsthorpe Twp., Ontario

- prospecting, geological mapping, manual trenching, soil sampling, ground magnetometer and VLF surveys.

Reports for all the surveys are available online at the Ministry of Northern Development, Mines and Forestry website.

Survey Dates and Personnel

The soil survey on the Black River South Property was completed in 2 days between December 8th and December 9th, 2011. The soil samples were collected by property owner, James M. Chard of Cordova Mines, Ontario.

Survey Logistics

A total of 58 soil samples were collected during the survey. The samples were taken in the “B” horizon at a depth of 15 to 25 centimetres below the surface. Sample material consisted of 160 to 415 grams of orange-brown to dark brown sandy till containing various sizes of rock fragments from local sources.

The samples were collected at 25 metre intervals along four separate flagged lines used for the ground spectrometry survey. Soil sample locations and the assay results are plotted at a scale of 1 : 4,000 on maps accompanying this report.

The soil samples were sent for analyses at SGS Canada Inc. in Lakefield, Ontario. All the soil samples were analyzed for gold using a standard fire assay procedure. The gold analyse for each sample was preformed on 30 grams of material screened to 75 um.

Four rock samples were collected during the soil survey. Rock sample locations and assay results are plotted on the soil survey maps. The rock samples were also sent to SGS Canada Inc. and analyzed for gold and silver using a standard fire assay technique.

Assay certificates for the soil and rock analyses are appended to this report.

Results of Soil Survey

The results of the soil survey are summarized in Figure 7.

The gold content obtained from the soil assays ranged <0.02 grams per tonne (g/t) to 0.06 g/t. Forty-eight samples assayed less than 0.02 g/t Au. Ten samples assayed greater than 0.02 g/t and are considered anomalous. Results for each line include:

L.0N, 3+50W to 4+75W, Claim Line

-no anomalous values.

L.1+00N, 4+50W to 5+25W

- two consecutive samples, 5+00W & 5+25W assayed 0.03 g/t Au
- the sample sites are coincident with gamma-ray anomaly BRS-18.

L.14+00N, 5+25W to 12+00W

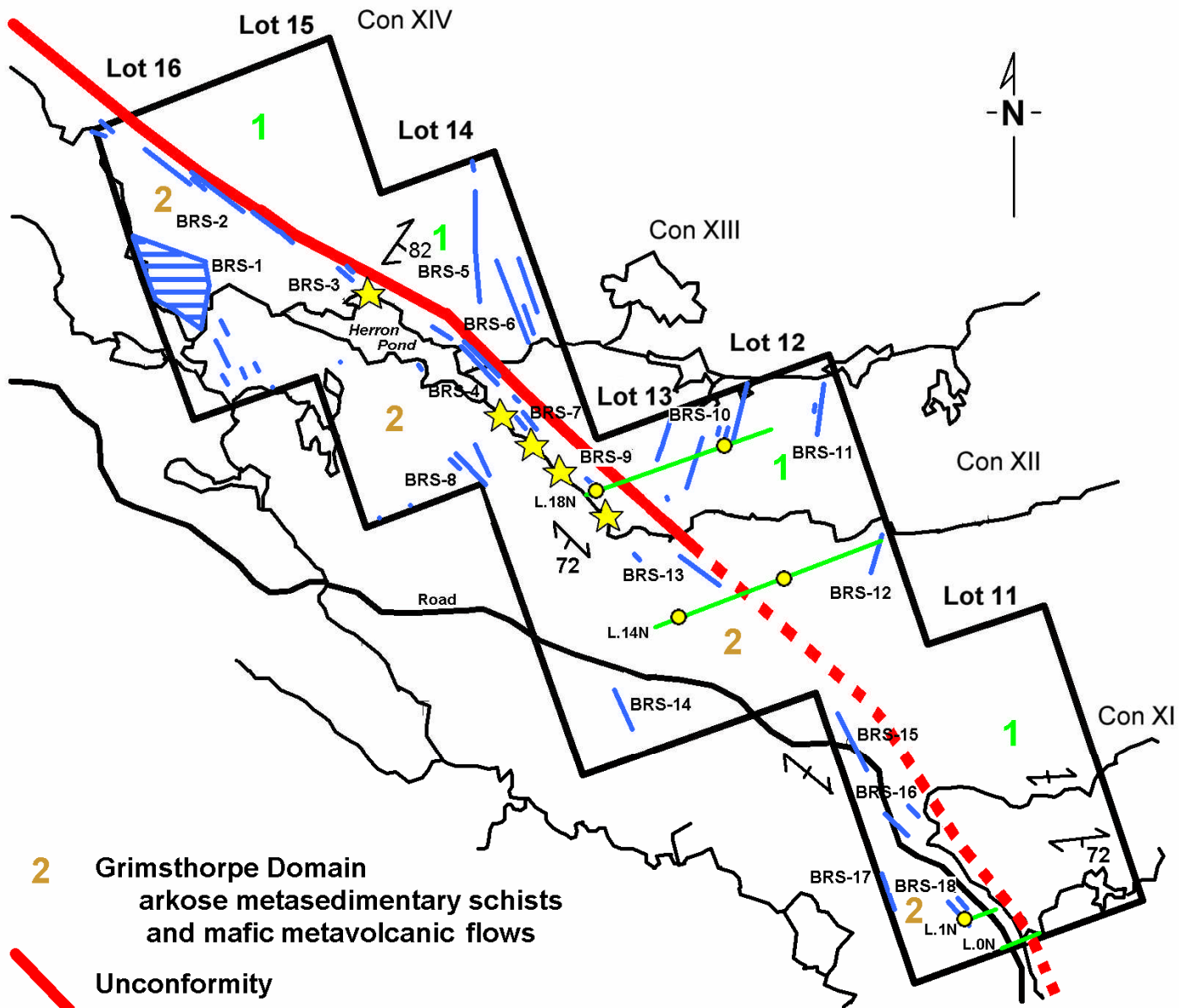
- two separate gold anomalies detected at 8+00W and 11+25W.
- 8+00W anomaly consists of three consecutive samples assaying 0.03 g/t Au, 0.06 g/t Au and 0.03 g/t Au detected at 7+75 to 8+25W.
- 11+25W anomaly consists of a single station response assaying 0.03 g/t Au and is situated on strike from the gold mineralization at Herron Pond and the BRS-13 gamma-ray anomaly.

L.18+00N, 7+50W to 12+25W

- a single station response assaying 0.05 g/t Au was detected at 9+00W and coincides with gamma-ray anomaly BRS-10.
- 3 soil sample sites between 11+50W and 12+25W assayed 0.02 g/t and coincide with the mineralization at Herron Pond and gamma-ray anomaly BRS-9.

Results of Rock Sampling

Four rock samples were collected close to the unconformity on L.18+00N. Rock sample descriptions and assay results are summarized in Table 2. Sample GR-1 returned the best assays of gold and silver. The sample was obtained from a boulder of quartz containing traces of galena and pyrite and assayed 0.07 g/t Au and 2.5 g/t Ag.



2 Grimsthorpe Domain
arkose metasedimentary schists
and mafic metavolcanic flows

Unconformity

interpreted

1 Canniff Complex
mafic metavolcanic
and gabbroic flows

★ Gold occurrence

— Soil sample line

● Gold in soil anomaly

▨ Gamma Ray Anomaly
+40 cps

0 500 1000 metres

source: R. Dillman 1991, 2011

FIGURE 7.
Soil Survey Results
Black River South Property
Union Glory Gold Limited
Grimsthorpe Twp., Ontario

Table 2. Rock Sample Descriptions and Results, Black River South

Rock Sample Number	Grid Location GPS NAD 83	Claim Lot, Concession	Sample Type	Assay Result	Comment
GR-1	18+00N, 12+25W 307842mE, 4964724mN	4209867 Lot 14, conc. IIX, N.1/2	Best Grab	0.07 g/t Au 2.5 g/t Ag	2 to 3 mm cleavage faces of galena in small masses in an angular, rusty quartz boulder. Ankerite, trace pyrite. North side of trail.
GR-2	18+00N, 12+25W 307842mE, 4964724mN	4209867 Lot 14, conc. IIX, N.1/2	Best Grab	<0.02 g/t Au <0.5 g/t Ag	Same boulder 30x25x25cm. Fractured with many small, less than 1cm vugs. Ankerite, trace pyrite trace sphalerite?
GR-3	17+95N, 12+20W 307845mE, 4964721mN	4209867 Lot 14, conc. IIX, N.1/2	Best Grab	<0.02 g/t Au 0.5 g/t Ag	Silicified mafic rock bearing fine pyrite. 1 metre wide. South side of trail.
GR-4	17+95N, 12+20W 307845mE, 4964721mN	4209867 Lot 14, conc. IIX, N.1/2	Best Grab	<0.02 g/t Au 0.7 g/t Ag	Mafic rock showing silicification and fine pyrite. Maybe mylonitized. 1 metre wide.

Discussion of Results

In addition to the gold mineralization at Herron Pond, the assay results for the soil samples collected along lines 14+00N and 18+00N suggest another gold zone potentially exists in the Canniff Complex northeast of the unconformity. Further soil sampling and geological mapping are required to validate this. In the south section in the property, soil sampling was focused directly on the unconformity and without further sampling it is difficult to determine the gold potential surrounding the unconformity.

The assay results for the rock samples shed little information however, anomalous gold and silver values were found with galena in quartz float. Similar material has been found in the Herron Pond Zone in bedrock on line 21+00N.

Recommendations

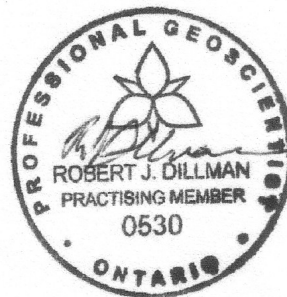
Further soil sampling and geological ground investigation is required to evaluate the gold potential of the property and determine the extent of gold mineralization in the Herron Pond area. Additional soil sampling is recommended to further determine if a second gold zone is situated northeast of the unconformity. The soil survey should be accompanied by prospecting and geological mapping. A combined ground magnetometer and VLF survey is also recommended. Ground geophysical surveys would aid in identifying potential gold structures and understanding the geological environment in the south section of the property. A budget for the proposed program is \$87,200 and is outlined in Table 3.

Respectfully submitted,



Robert James Dillman
Arjadee Prospecting

P.Ge



January 27, 2012

Table 3. Budget For Proposed Exploration

Line Cutting/ Grid Work

Line Cutting	21 km @ \$400 / km	\$8,400	
Food, Hotel, Transportation		<u>3,000</u>	
		\$11,400	\$11,400

Prospecting, Geological Work

Prospecting	2 men x \$350 /day x 14 days	\$9,800	
Food, Hotel, Transportation		3,000	
Maps, Reports		<u>3,500</u>	
		\$16,300	\$16,300

Soil Survey

Sample collection	2 men x \$350 /day x 7 days	\$4,900	
Assays	700 samples @ \$42 / sample	29,400	
Food, Hotel, Transportation		1,500	
Maps, Reports		<u>3,500</u>	
		\$39,300	\$39,300

Ground Magnetometer Survey

Survey	21 km @ \$200 / km	\$4,200	
Food, Hotel, Transportation		1,500	
Maps, Reports		<u>3,500</u>	
		\$9,200	\$9,200

Contingency	15%		<u>\$11,000</u>
--------------------	-----	--	------------------------

Total **\$87,200**

References

- Christie, B . J. 1992.** Report on Prospecting, Geological Mapping and Soil Sampling, Dillman: Black River Property, Grimsthorpe Township, Southern Ontario Mining Division, Ontario. Unpublished internal report for Homestake Minerals.
- Dillman, R. J., Chard, J. M. 2011.** Report on Ground Gamma-Ray Survey, Black River South Property Grimsthorpe Township, Ontario. Assessment file.
- Dillman, R. J. 2003.** Report on Prospecting and Rock Sampling on the Black River Property, Grimsthorpe Township, Ontario. Assessment file.
- Dillman, R. J. 1992.** Report on Electromagnetic (VLF) and Magnetic Surveys. Black River Property, Grimsthorpe Township, Southern Ontario Mining Division, Ontario. Report for Ontario Prospectors Assistance Program, file no. OP92-235.
- Dillman, R. J. 1991.** Report on Prospecting, Grimsthorpe Township, Hastings County, Ontario. Report for Ontario Prospectors Assistance Program, file no. OP91-535.
- Easton, R. M. and Ford, F. 1990.** Geology of the Grimsthorpe Area: In Summary of Field Work and Other Activities 1990. Ontario Geological Survey, Miscellaneous Paper 151, p. 99-110.
- Meen, V. B. 1942.** Geology of Grimsthorpe-Barrie Area, Ontario Department of Mines, Vol. 51, pt. 4, p. 1-50 (with Map 51d: published 1944).

Robert J. Dillman P.Ge, B.Sc.
ARJADEE PROSPECTING
8901 Reily Drive, Mount Brydges, Ontario, Canada, N0L1W0
Phone/ fax (519) 264-9278
arjadee1@yahoo.com

CERIFICATE of AUTHOR

I, **Robert J. Dillman, Professional Geologist**, do certify that:

1. I am the **President** and the holder of a **Certificate of Authorization** for:

ARJADEE PROSPECTING
8901 Reily Drive
Mount Brydges, Ontario, Canada
N0L1W0


2. I graduated in 1991 with a **Bachelor of Science Degree** in **Geology** at the **University of Western Ontario**.
3. I am an active member of:
Association of Professional Geoscientists of Ontario, APGO
Prospectors and Developers Association of Canada, PDAC
Geological Association of Canada, GAC
4. I have been a **licensed Prospector in Ontario** since 1985.
5. I have worked continuously as a **Professional Geologist** for 19 years.
6. Unless stated otherwise, **I am responsible** for the preparation of all sections of the Assessment Report titled:

REPORT ON "B" HORIZON SOIL SURVEY AND ROCK SAMPLING
BLACK RIVER SOUTH PROPERTY
GRIMSTHORPE TOWNSHIP, ONTARIO

dated, January 27, 2012

7. I am not aware of any material fact or material change with respect to the subject matter of the Assessment Report that is not contained in the Assessment Report and its omission to disclose makes the Assessment Report misleading.

Dated this 27th day of January 27, 2012


Robert James Dillman
Arjadee Prospecting

P.Ge



APPENDIX I.
 G.P.S. WAYPOINT DATA
 RADIOMETRIC GAMMA-RAY SPECTROMETER SURVEY
 GRIMSTHORPE TWP, ONTARIO
 BLACK RIVER SOUTH PROPERTY

NAD83	UTM/UPS		METRIC		ZONE 18T	
<u>Line Number</u>	<u>Co-ordinates East to West</u>					
	E	N	E	N		
L0	309617	4963398	308851	4963131		
L1N	309584	4963493	308818	4963226		
L2N	309551	4963587	308786	4963320		
L3N	309516	4963681	308752	4963414		
L4N	309484	4963774	308718	4963508		
L5N	309448	4963867	308685	4963602		
L6N	309417	4963963	308651	4963696		
L7N	309385	4964058	308621	4963792		
L8N	309356	4964153	308586	4963886		
L9N	309322	4964247	308552	4963979		
L10N	309282	4964362	307748	4963828		
L11N	308866	4964325	307713	4963923		
L12N	308833	4964418	307679	4964016		
L13N	308800	4964513	307645	4964110		
L14N	308766	4964607	307612	4964205		
L15N	308734	4964700	307578	4964299		
L16N	308700	4964794	307547	4964393		
L17N	308666	4964889	307512	4964487		
L18N	308633	4964983	307479	4964581		

APPENDIX I. con't
G.P.S. WAYPOINT DATA

Line Number	Co-ordinates East to West			
	E	N	E	N
L19N	308600	4965078	307447	4964677
L20N	308563	4965186	307028	4964655
L21N	307762	4965015	306995	4964749
L22N	307729	4965109	306962	4964843
L23N	307695	4965203	306929	4964938
L24N	307662	4965297	306896	4965032
L25N	307629	4965391	306466	4965000
L26N	307597	4965485	306434	4965095
L27N	307561	4965579	306402	4965189
L28N	307527	4965673	306369	4965284
L29N	307497	4965768	306334	4965378
L30N	307461	4965871	306301	4965468
L31N	307033	4965829	306267	4965562
L32N	307002	4965924	306234	4965656
L33N	306970	4966018	306200	4965751
L34N	306937	4966113	306166	4965844
L35N	306904	4966207	306134	4965939

**"B" Horizon Soil Sample Description
Black River South Property
December 2011
J.M. Chard**

Red Dirt, Grits – R.D.G.
Brown Gray Clay – B.G.C.
Gray Clay, Grits – G.C.G.
Red Dirt, Few Grits – R.D.F.G.
Brown Clay – B.C.
Red Dirt, Brown Clay, Grits – R.D.B.C.G.

Sample #	Comment		
GS-1	R.D.G.	GS-43	R.D.B.C.G.
GS-2	R.D.G.	GS-44	R.D.G.
GS-3	B.G.C.	GS-45	B.C. - R.D.G.
GS-4	R.D.G.	GS-46	R.D.B.C.G.
GS-5	B.G.C. - R.D.G.	GS-47	R.D.G.
GS-6	R.D.G.	GS-48	R.D.G.
GS-7	G.C.G.	GS-49	R.D.G.
GS-8	R.D.G.	GS-50	R.D.B.C.G.
GS-9	R.D.F.G.	GS-51	R.D.G.
GS-10	R.D.G.	GS-52	R.D.G.
GS-11	R.D.G.	GS-53	R.D.B.C.G.
GS-12	R.D.G.	GS-54	R.D.B.C.G.
GS-13	R.D.G.	GS-55	R.D.B.C.G.
GS-14	R.D.G.	GS-56	R.D.B.C.G.
GS-15	R.D.G.	GS-57	B.C. - R.D.G.
GS-16	R.D.F.G.	GS-58	R.D.G.
GS-17	R.D.G.		
GS-18	R.D.G.		
GS-19	R.D.G.		
GS-20	R.D.G.		
GS-21	R.D.G.		
GS-22	B.C. - R.D.G.		
GS-23	R.D.G.		
GS-24	R.D.B.C.G.		
GS-25	B.C. - R.D.G.		
GS-26	B.C. - R.D.G.		
GS-27	R.D.B.C.G.		
GS-28	R.D.G.		
GS-29	R.D.G.		
GS-30	B.C. - R.D.G.		
GS-31	R.D.G.		
GS-32	R.D.G.		
GS-33	R.D.B.C.G.		
GS-34	R.D.B.C.G.		
GS-35	R.D.B.C.G.		
GS-36	B.C. - R.D.G.		
GS-37	R.D.G.		
GS-38	B.C. - R.D.G.		
GS-39	R.D.B.C.G.		
GS-40	R.D.B.C.G.		
GS-41	R.D.G.		
GS-42	R.D.G.		



SGS Canada Inc.
P.O. Box 4300 - 185 Concession St.
Lakefield - Ontario - K0L 2H0
Phone: 705-652-2000 FAX: 705-652-6365

Walk In Minerals ON
Attn : RJ Dillman

Union Glory Gold Limited

January-20-12

Date Rec. : 15 December 2011
LR Report : CA02992-DEC11
Client Ref : James M. Chard Sun &
Partners Professional
Corporation

CERTIFICATE OF ANALYSIS

Final Report

	Sample ID	Au g/t	Weight g
L.0+00W	3+50W 1: GS-1	< 0.02	166
	2: GS-2	< 0.02	161
	4+00W 3: GS-3	< 0.02	194
	4: GS-4	< 0.02	206
L.1+00N	4+50W 5: GS-5	< 0.02	217
	4+75W 6: GS-6	< 0.02	228
	4+50W 7: GS-7	< 0.02	210
	8: GS-8	< 0.02	180
L.18+00N	5+00W 9: GS-9	0.03	206
	5+25W 10: GS-10	0.03	189
	12+25W 11: GS-11	0.02	194
	12+00W 12: GS-12	< 0.02	235
L.18+00N	13: GS-13	0.02	225
	11+50W 14: GS-14	0.02	229
	15: GS-15	< 0.02	240
	11+00W 16: GS-16	< 0.02	210
L.18+00N	17: GS-17	< 0.02	246
	10+50W 18: GS-18	< 0.02	246
	19: GS-19	< 0.02	252
	10+00W 20: GS-20	< 0.02	249
L.18+00N	21: GS-21	< 0.02	329
	9+50W 22: GS-22	< 0.02	219
	23: GS-23	0.05	236
	9+00W 24: GS-24	< 0.02	208
L.18+00N	25: GS-25	< 0.02	322
	8+50W 26: GS-26	< 0.02	307
	27: GS-27	< 0.02	256
	8+00W 28: GS-28	< 0.02	274
L.18+00N	7+75W 29: GS-29	< 0.02	339

OnLine LIMS

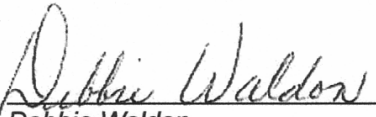
This document is issued by the Company under its General Conditions of Service accessible at http://www.sgs.com/terms_and_conditions.htm. Attention is drawn to the limitation of liability, indemnification and jurisdiction issues defined therein. WARNING: The sample(s) to which the findings recorded herein (the 'Findings') relate was (were) drawn and / or provided by the Client or by a third party acting at the Client's direction. The Findings constitute no warranty of the sample's representativity of the goods and strictly relate to the sample(s). The Company accepts no liability with regard to the origin or source from which the sample(s) is/are said to be extracted. The Findings report on the samples provided by the client and are not intended for commercial or contractual settlement purposes. Any unauthorized alteration, forgery or falsification of the content or appearance of this document is unlawful and offenders may be prosecuted to the fullest extent of the law. Test method information available upon request.



SGS Canada Inc.
P.O. Box 4300 - 185 Concession St.
Lakefield - Ontario - KOL 2H0
Phone: 705-652-2000 FAX: 705-652-6365

LR Report : CA02992-DEC11

	Sample ID	Au g/t	Weight g
L.18+00N	7+50W 30: GS-30	< 0.02	379
	12+00W 31: GS-31	< 0.02	228
	32: GS-32	< 0.02	231
	11+50W 33: GS-33	< 0.02	465
	34: GS-34	0.03	380
	11+00W 35: GS-35	< 0.02	269
	36: GS-36	< 0.02	318
	10+50W 37: GS-37	< 0.02	361
	38: GS-38	< 0.02	310
	10+00W 39: GS-39	< 0.02	323
	40: GS-40	< 0.02	273
	9+50W 41: GS-41	< 0.02	275
	42: GS-42	< 0.02	260
	9+00W 43: GS-43	< 0.02	304
	44: GS-44	< 0.02	286
	L.14+00N	8+50W 46: GS-45	< 0.02
47: GS-46		0.03	341
8+00W 48: GS-47		0.06	415
49: GS-48		0.03	260
7+50W 50: GS-49		< 0.02	318
51: GS-50		< 0.02	407
7+00W 52: GS-51		< 0.02	334
53: GS-52		< 0.02	223
6+50W 54: GS-53		< 0.02	312
55: GS-54		< 0.02	309
6+00W 56: GS-55		< 0.02	334
57: GS-56		< 0.02	335
5+50W 58: GS-57		< 0.02	368
5+25W 59: GS-58		< 0.02	251
60-REP: GS-49	< 0.02	---	


Debbie Waldon
Project Coordinator,
Minerals Services, Analytical

OnLine LIMS

Page 2 of 2

This document is issued by the Company under its General Conditions of Service accessible at http://www.sgs.com/terms_and_conditions.htm. Attention is drawn to the limitation of liability, indemnification and jurisdiction issues defined therein. WARNING: The sample(s) to which the findings recorded herein (the 'Findings') relate was (were) drawn and / or provided by the Client or by a third party acting at the Client's direction. The Findings constitute no warranty of the sample's representativity of the goods and strictly relate to the sample(s). The Company accepts no liability with regard to the origin or source from which the sample(s) is/are said to be extracted. The Findings report on the samples provided by the client and are not intended for commercial or contractual settlement purposes. Any unauthorized alteration, forgery or falsification of the content or appearance of this document is unlawful and offenders may be prosecuted to the fullest extent of the law. Test method information available upon request.



SGS Canada Inc.
P.O. Box 4300 - 185 Concession St.
Lakefield - Ontario - K0L 2H0
Phone: 705-652-2000 FAX: 705-652-6365

Walk In Minerals ON
Attn : R.J. Dillman

Union Glory Gold Limited

January-20-12

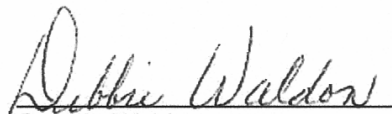
Date Rec. : 12 December 2011
LR Report : CA02598-DEC11
Client Ref : James M. Chard Sun &
Partners Professional
Corporation

CERTIFICATE OF ANALYSIS

Final Report

Sample ID	Au g/t	Ag g/t	Weight g
1: GR-1	0.07	2.5	473
2: GR-2	< 0.02	< 0.5	1236
3: GR-3	< 0.02	0.5	260
4: GR-4	< 0.02	0.7	799

Control Quality Analysis


Debbie Waldon
Project Coordinator,
Minerals Services, Analytical



RECEIPT

Invoice #: **C245032**

Printed: January 31, 2012
Received: December 15, 2011

SGS Tax ID GST/HST/TPS#R105082572

Project#R101050500

Lr. Ref. : CA02992-DEC11

(5835)

Attn : RJ Dillman

Reference : James M. Chard Sun & Partners Professional Corporation

Qty	Analysis	Description	\$ Unit	\$ Total
58	Pb Fusion	30 g Lead Fusion Sample Prep	12.00	696.00
58	Au	Au PM Assay - single element	17.00	986.00
46	CRU21	Crush 75% passing 2mm	4.10	188.60
58	Pulv200M	Pulverize 250g 85% 75um	4.10	237.80
58	Weight	Weighing and Reporting	1.50	87.00
58	Dry 105	Dry samples <3.0kg, 105°C	2.15	124.70
			SUB TOTAL \$	2320.10
			Analysis	2320.10
			HST 13 %	301.61
			TOTAL \$	2621.71

Paid by Visa Feb 2/12. Thank you.

** Invoice in Canadian Funds unless stated otherwise **



RECEIPT

Invoice #: **C245134**

Printed: **January 31, 2012**

Received: **December 12, 2011**

SGS Tax ID GST/HST/TPS#R105082572

Project #R101050500

Lr. Ref. : CA02598-DEC11

(5835)

Attn : R.J. Dillman

Reference : James M. Chard Sun & Partners Professional Corporation

Qty	Analysis	Description	\$ Unit	\$ Total
4	Ag	Ag AAS - single element	17.00	68.00
4	Pb Fusion	30 g Lead Fusion Sample Prep	12.00	48.00
4	Au	Au PM Assay - single element	17.00	68.00
4	Silver	Ag Aqua Regia Sample Prep	11.00	44.00
4	Weight	Weighing and Reporting	1.50	6.00
4	Dry 105	Dry samples <3.0kg, 105°C	2.15	8.60
4	CRU21	Crush 75% passing 2mm	4.10	16.40
4	Pulv200M	Pulverize 250g 85% 75um	4.10	16.40
			SUB TOTAL \$	275.40
			Analysis	275.40
			HST 13 %	35.80
			- Advance Payment	311.20
			TOTAL \$	0.00

Paid by Visa Feb 2/12. Thank you

** Invoice in Canadian Funds unless stated otherwise **