

2 · 48781

Work Report

Re-blazing and Flagging
Of Lines on Claim # 3007689
Gillies Township
Larder Lake Mining Division

By

Alan Kon

June 17, 2011



Introduction

On May 16, 2011 a property inspection was performed on claim # 3007689 also known as the triangle claim, in Gillies Limit, Larder Lake Mining Division by Alan Kon of North Cobalt, Ontario. It was quickly realized that most of the blazed and flagged claim lines were no longer visible where they crossed Hound Chutes Road and the Ontario Hydro power lines when Ontario Hydro removed the trees and brush along the claim lines.

Alan Kon along with a student from the Haileybury School of Mines re-blazed, flagged freshened the claim lines. The student was also shown on how to stake a claim.

The claim was first staked by Alan Kon in the summer of 2005.

Access and History

Claim # 3007689 is a triangle shaped claim bordering on the Gillies Limit/ Coleman township line. It is approximately 250m long and 300m wide. It was also part of the Mensilvo/ Silver Bar property. Although there are no shafts to surface on the claim, there are numerous pits and trenches. The claim is also next to the Silver Summit/Silver Fields property which produced in excess of 25 million ounces of silver. The Waldman and Wyandoh shafts are within 50 meters of the claim and produced over 50 thousand ounces of silver between the two properties.

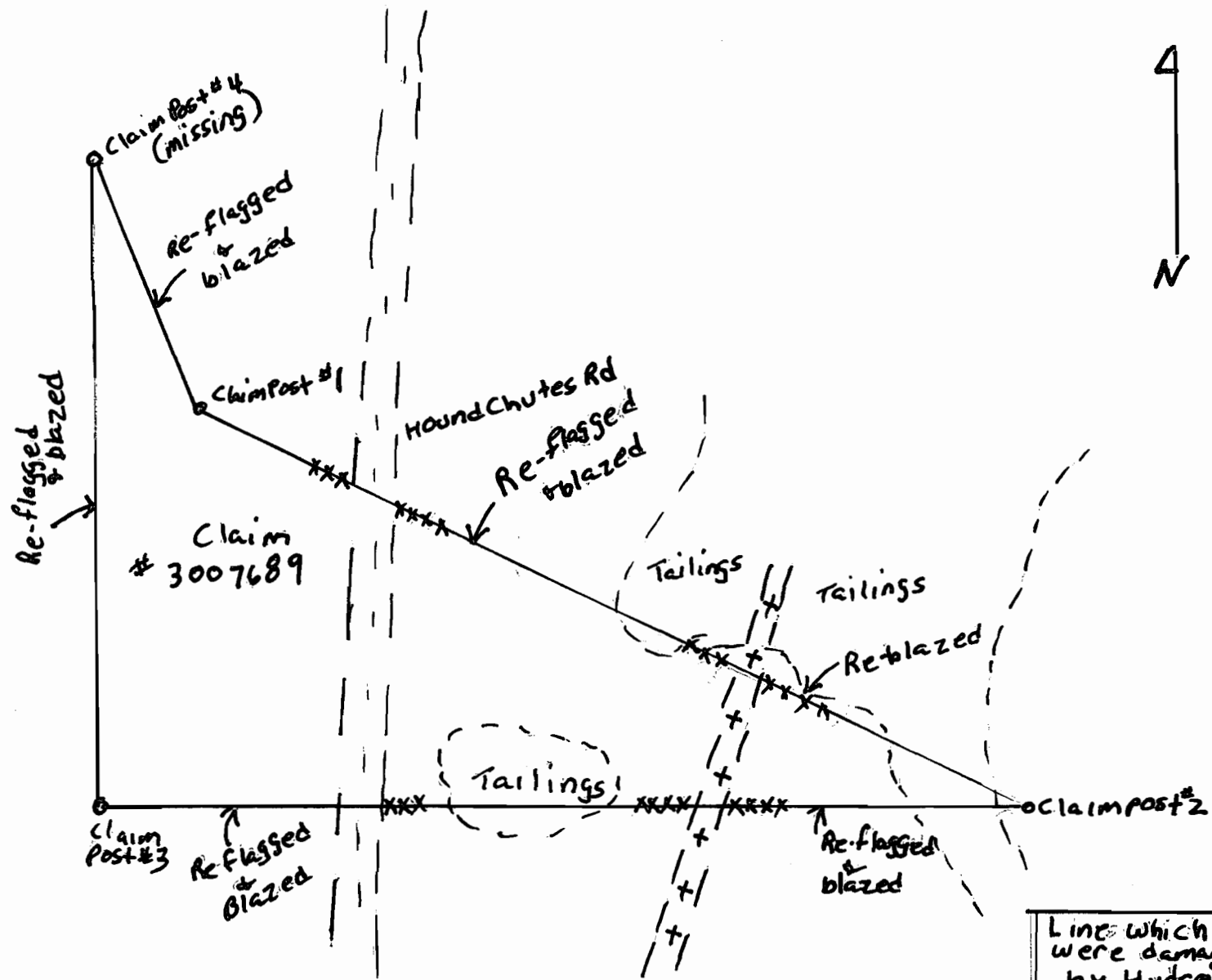
The claim is approximately 3 Km south of the historical silver mining town of Cobalt Ontario. Access to the claim can be achieved via highway 11 north to 11b east for 6 Km to Coleman Rd, then south east for 1 Km to Hound Chutes Rd and finally 3 Km south. Hound Chutes Rd passes through the claim.

Work Performed

It took less than a full day to re-blaze, flag and freshen up the lines on claim #3007689. Work started at claim post #1 and proceeded as if it was a new claim being staked. The claim posts were not altered or moved in any way except to be stood up again.

Being an odd triangle shaped claim the lines were somewhat tough to follow when crossing the road and power lines. Two GPS's, a Garmin 62 ST and a Garmin 60 CS were used along with UTM coordinates from the previous staking and work and from the MNDMF claim map. Alan Kon blazed trees and cut down branches and other brush while the student flagged.

A handwritten signature in cursive script, appearing to read "Alan Kon", with a long horizontal flourish extending to the right.



1 cm = ~20m

Alan Fox

June 16, 2011

Line which XXXX XXX were damaged by Hydro	XXXX XXX
Houndchutes Road	
Hydro Line	
Tailings	○