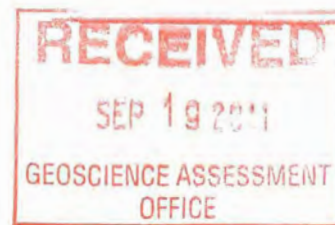


2 · 49487

Prospecting Report
Claim 4220803
Cleaver Township
Larder Lake Mining Division
Ontario

BY



Victor WA Warford
111 Evans St
South Porcupine, Ontario

September 2011

Prospecting Log

This report covers the prospecting done during the summer of 2011 on the 4 unit claim 4220803. This claim is located in the south west portion of Cleaver Township. Access is via the Forks River Road from Tisdale Street, South Porcupine Ontario, south 43 km to the truck park and then by ATV for 2km along a logging road and then by an old trail. See maps 1,2 and 3.

Day 1 July 13,2011

Traveled to claims via Forks river road, the road is not regularly maintained and caution is required. Tried to access claims by the logging road but it is too grown in and parked the truck at the location indicated on map 2. Now by atv traveled around claims to see if there is any new activity or access to claims. Searched for and located previous trail. Had to leave atv and walked in to where the previous located log buildings marking trail along the way. There were many trees down across trail will have to bring chainsaw next time. Returned Home



Log structure

Day 2 August 26, 2011

Traveled to claim and parked at the truck park. Using the atv, chainsaw and associated equipment accessed claim clearing trail of fallen trees past old camp to point A indicated on map 3. Went back to old camp and searched south along trail. Sited a old barrel and went to investigate and was about a meter from the barrel when I realised that I was in a old building approximately 3 meters square and the barrel was actually a raise bucket. The old reports that I had indicated that trenching was done but no mention of a shaft. Not a good idea to explore for old mine shafts buy yourself will need some help..



Raise bucket.

Day 3 August 29

Went to MNDMF and searched library and found no new information. Asked Ann Wilson for help and she found a reference to a shaft.

Day 4 August 30

Travelled to claims with Richard Warford and brushed trail on the way in. Searched around the old camp site for indication of a shaft found several old building locations, most were just out lines in the moss. Found an old excavation in between two rock ridges that had no vegetation in it so this was more recent. There were quartz rocks in the excavated till and decided to clear debris from the bottom of trench. Using a trenching tool cleared bottom of forest debris and discovered clay. On the east rock ridge above the trench a 2 to 3 cm quartz vein running north south and dipping 80 degrees to the west was located and a 2 kg sample (b3) was taken. A second trench about 10m north of the first trench was located. It had the same clay. Could not find any indication of a shaft or rock trenching.



Newer trench with a clay bottom.

Day 5 August 31

Visited Ann Wilson at mndmf and she was able to print a copy of the report with a map that showed the location of the shaft and trenches.

Day 6 Sept 3

Traveled to claims with Angela Skinner. Found old trenches about 10 m south east of point A. Found the shaft [s1] which is about 3m x 3m, with water at about 3m. Located trench t1 in large quartz outcrop which is 2m deep from top of outcrop and 4m long. Collected a 2kg sample [b1] from trench [t1]. Also collected a sample [b2] from trench [t2] 190 m north of t1



Trench cut in outcrop.

Day 7 Sept 6 2011

Traveled to claims with Richard Warford and extended trail to the shaft area. String lined the trench system from the quarts out crop to point A. There were 12 individual trenches but only t1 and t2 appear to be blasted in the rock. Collected a 5kg sample [b4] from a trench 10m north of t1. Also collected a sample [b5] from the shaft area.

Persons who preformed work

Victor Warford 6 days

Angela Skinner 1 day

Richard Warford 2days

Samples: Pending

Report Completion 15/09/2011

Map 1

Date / Time of Issue: Wed Sep 07 09:27:24 EDT 2011

TOWNSHIP / AREA
CLEAVER

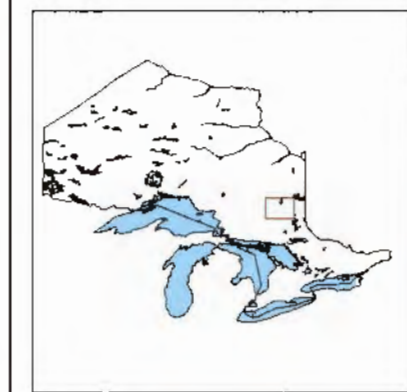
PLAN
G-3619

ADMINISTRATIVE DISTRICTS / DIVISIONS

Mining Division: Larder Lake
Land Titles/Registry Division: TIMISKAMING
Ministry of Natural Resources District: TIMMINS



TOPOGRAPHIC		Land Tenure	
	Administrative Boundaries		Freshhold Patent
	Township		Surface And Mining Rights
	Concession Lot		Surface Rights Only
	Provincial Park		Mining Rights Only
	Indian Reserve	Leasehold Patent	
	Cliff, Pit & Pile		Surface And Mining Rights
	Contour		Surface Rights Only
	Mine Shafts		Mining Rights Only
	Mine Headframe	Licence of Occupation	
	Railway		Uses Not Specified
	Road		Surface And Mining Rights
	Trail		Surface Rights Only
	Natural Gas Pipeline		Mining Rights Only
	Utilities		Land Use Permit
	Tower		Order in Council (Not open for staking)
			Water Power Lease Agreement
			Mining Claim
			Fled Only Mining Claims
		LAND TENURE WITHDRAWALS	
			Areas Withdrawn from Disposition
		Mining Acts Withdrawal Types	
			Surface And Mining Rights Withdrawn
			Surface Rights Only Withdrawn
			Mining Rights Only Withdrawn
		Order in Council Withdrawal Types	
			Surface And Mining Rights Withdrawn
			Surface Rights Only Withdrawn
			Mining Rights Only Withdrawn
			IMPORTANT NOTICES



Those wishing to stake mining claims should consult with the Provincial Mining Recorders' Office of the Ministry of Northern Development and Mines for additional information on the status of the lands shown hereon. This map is not intended for navigational, survey, or land title determination purposes as the information shown on this map is compiled from various sources. Completeness and accuracy are not guaranteed. Additional information may also be obtained through the local Land Titles or Registry Office, or the Ministry of Natural Resources.

The information shown is derived from digital data available in the Provincial Mining Recorders' Office at the time of downloading from the Ministry of Northern Development and Mines web site.

General Information and Limitations
 Contact Information:
 Provincial Mining Recorders' Office
 1001 Green Mill Centre 633 Ramsey Lake Road
 Sudbury ON P3E 6B5
 Home Page: www.mdm.gov.on.ca/MNDM/MINES/LANDS/mismpgpe.htm

Toll Free: 1 (888) 415-9845 ext 574
 Tel: 1 (877) 870-1444
 Fax: 1 (877) 870-1444
 Map Datum: NAD 83
 Projection: Geographic Coordinates
 Topographic Data Source: Land Information Ontario
 Mining Land Tenure Source: Provincial Mining Recorders' Office

This map may not show unregistered land tenure and interests in land including certain patents, leases, easements, right of ways, flooding rights, licences, or other forms of disposition of rights and interest from the Crown. Also certain land tenure and land uses that restrict or prohibit free entry to stake mining claims may not be illustrated.

MAP 2

Date / Time of Issue: Thu Sep 15 13:01:40 EDT 2011

TOWNSHIP / AREA
CLEAVER

PLAN
G-3619

ADMINISTRATIVE DISTRICTS / DIVISIONS

Mining Division
Land Titles/Registry Division
Ministry of Natural Resources District

Larder Lake
TIMISKAMING
TIMMINS



TOPOGRAPHIC

- Administrative Boundaries
- Township
- Concession, Lot
- Provincial Park
- Indian Reserve
- Oil, Pt & Ptc
- Contour
- Mine Shafts
- Mine Headframe
- Railway
- Road
- Trail
- Natural Gas Pipeline
- Utility
- Tower

Land Tenure

- Freehold Patent**
 - Surface And Mining Rights
 - Surface Rights Only
 - Mining Rights Only
- Leasehold Patent**
 - Surface And Mining Rights
 - Surface Rights Only
 - Mining Rights Only
- License of Occupation**
 - Uses Not Specified
 - Surface And Mining Rights
 - Surface Rights Only
 - Mining Rights Only
 - Land Use Permit
 - Order In Council (Not open for staking)
 - Water Power Lease Agreement

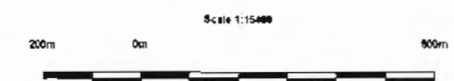
ADAMS	ELDRADO	LANGLURE	BLACKSTOCK
MCARTHUR	DOUBLAS	FALLOW	FASKEN
BARTLETT	GENIE	CLEAVER	MONK
ENGLISH	ZANTZ	JACKS	ANGILE
TEMPLE	HUTT	MONTROSE	BANDONMENT

- Mining Claim
1234567
- Filed Only Mining Claims
1234567

LAND TENURE WITHDRAWALS

- 1234 Areas Withdrawn from Disposition
- Mining Acts Withdrawal Types**
 - Wsm Surface And Mining Rights Withdrawn
 - Wsm Surface Rights Only Withdrawn
 - Wsm Mining Rights Only Withdrawn
- Order In Council Withdrawal Types**
 - W'sm Surface And Mining Rights Withdrawn
 - W's Surface Rights Only Withdrawn
 - W'm Mining Rights Only Withdrawn

No IMPORTANT NOTICES



LAND TENURE WITHDRAWAL DESCRIPTIONS (list may not be complete)

Identifier	Type	Date	Description
W-L-101/04	Wsm	Oct 9, 1994	SEC.35 W-L-101/04 NER S&M 04/10/06

Laction Point

General Information and Limitations

Contact Information:
Provincial Mining Recorders' Office
Vibert Green Miller Centre 803 Ramsey Lake Road
Sudbury ON P0E 8B5
Home Page: www.mndm.gov.on.ca/MNDMMINES/LANDS/strsmrpgp.htm

Toll Free
Tel: 1 (898) 415-8846 ext 574
Fax: 1 (877) 670-1444

Map Datum: NAD 83
Projection: UTM (6 degree)
Topographic Data Source: Land Information Ontario
Mining Land Tenure Source: Provincial Mining Recorders' Office

This map may not show unregistered land tenure and interests in land including certain patents, leases, easements, right of ways, flooding rights, licences, or other forms of disposition of rights and interest from the Crown. Also certain land tenure and land uses that restrict or prohibit free entry to stake mining claims may not be illustrated.

MAP 3

Date / Time of Issue: Thu Sep 15 13:04:18 EDT 2011

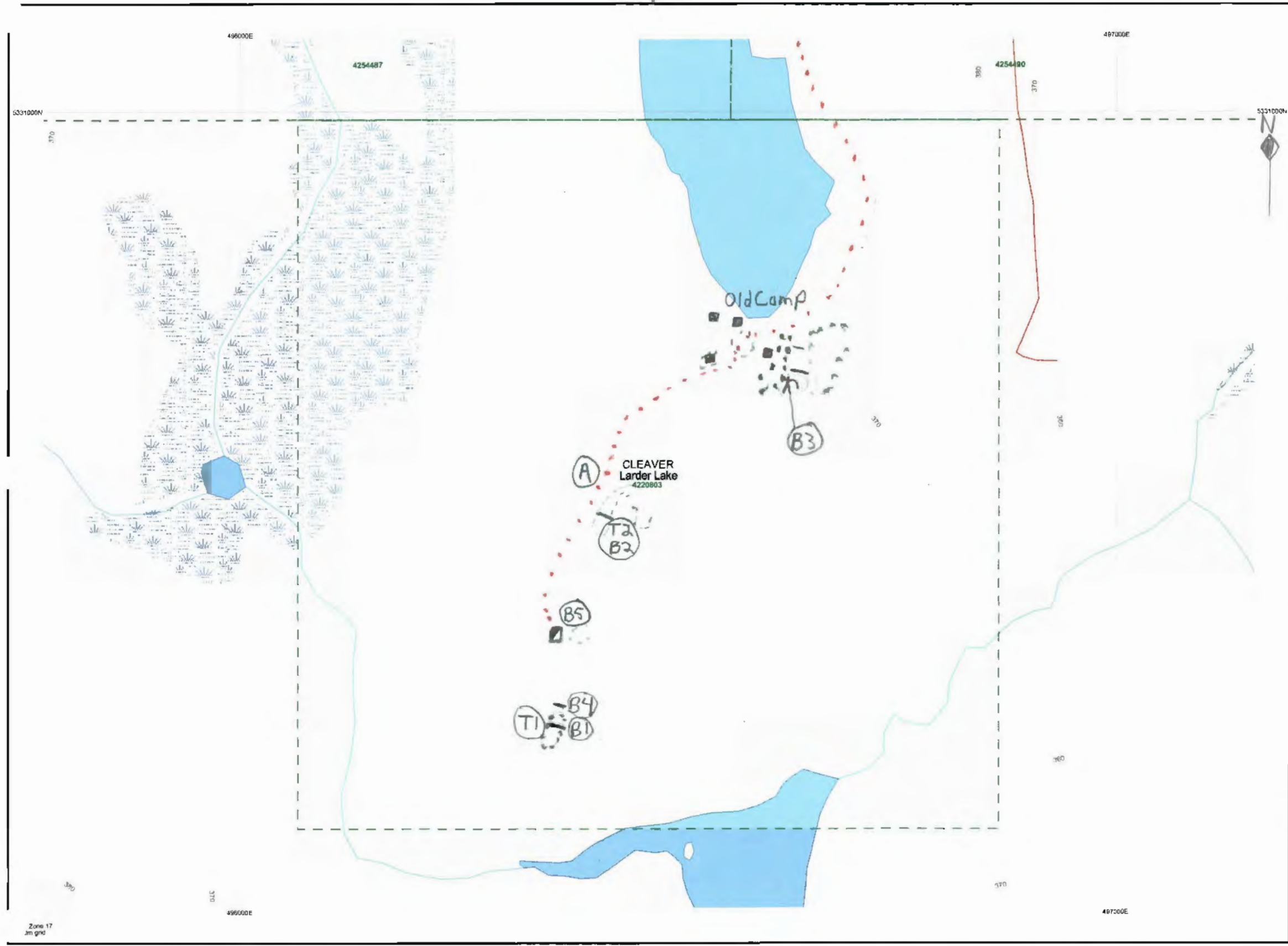
TOWNSHIP / AREA
CLEAVER

PLAN
G-3619

ADMINISTRATIVE DISTRICTS / DIVISIONS

Mining Division
Land Titles/Registry Division
Ministry of Natural Resources District

Larder Lake
TIMISKAMING
TIMMINS



TOPOGRAPHIC

- Administrative Boundaries
- Township
- Concession, Lot
- Provincial Park
- Indian Reserve
- Cliff, Pit & Pile
- Contour
- Mine Shaft
- Mine Headframe
- Railway
- Road
- Trail
- Natural Gas Pipeline
- Utilities
- Tower

Land Tenure

- Freehold Patent**
 - Surface And Mining Rights
 - Surface Rights Only
 - Mining Rights Only
- Leasehold Patent**
 - Surface And Mining Rights
 - Surface Rights Only
 - Mining Rights Only
- Licence of Occupation**
 - Uses Not Specified
 - Surface And Mining Rights
 - Surface Rights Only
 - Mining Rights Only
 - Land Use Permit
 - Order In Council (Not open for staking)
 - Water Power Lease Agreement

ADAMS	ELDORADO	LANGHAM	BLACKSTOCK
MCARTHER	DOUGLAS	FALLOM	FABEN
BARTLETT	ORNOE	CLEAVER	MORIEL
ENGLISH	ZAVITZ	HINCKS	ARBYLE
BEAUPRE	HUTT	MONTRONE	SAMBOCKSLERN

- Mining Claim
- Flad Only Mining Claims
- LAND TENURE WITHDRAWALS**
- Areas Withdrawn from Disposition
- Mining Acts Withdrawal Types
 - Wsm Surface And Mining Rights Withdrawn
 - Ws Surface Rights Only Withdrawn
 - Wm Mining Rights Only Withdrawn
- Order In Council Withdrawal Types
 - W'sm Surface And Mining Rights Withdrawn
 - W's Surface Rights Only Withdrawn
 - W'm Mining Rights Only Withdrawn
- IMPORTANT NOTICES



- Building
- Trench
- Location Point

Those wishing to stake mining claims should consult with the Provincial Mining Recorders' Office of the Ministry of Northern Development and Mines for additional information on the status of the lands shown hereon. This map is not intended for navigational, survey, or land title determination purposes as the information shown on this map is compiled from various sources. Completeness and accuracy are not guaranteed. Additional information may also be obtained through the local Land Titles or Registry Office, or the Ministry of Natural Resources.

The information shown is derived from digital data available in the Provincial Mining Recorders' Office at the time of downloading from the Ministry of Northern Development and Mines web site.

General Information and Limitations
 Contact Information:
 Provincial Mining Recorders' Office
 1001 Green Miler Centre 933 Ramsey Lake Road
 Sudbury ON P3E 8B5
 Home Page: www.mndm.gov.on.ca/MNDMMINES/LANDS/linksmappe.htm

Toll Free
 Tel: 1 (800) 415-9845 ext 5742
 Fax: 1 (877) 670-1444

Map Datum: NAD 83
 Projection: UTM (6 degree)
 Topographic Data Source: Land Information Ontario
 Mining Land Tenure Source: Provincial Mining Recorders' Office

This map may not show unregistered land tenure and interests in land including certain patents, leases, easements, right of ways, flooding rights, licences, or other forms of disposition of rights and interest from the Crown. Also certain land tenure and land uses that restrict or prohibit free entry to stake mining claims may not be illustrated.

MAP 4

Date / Time of Issue: Thu Sep 15 13:04:18 EDT 2011

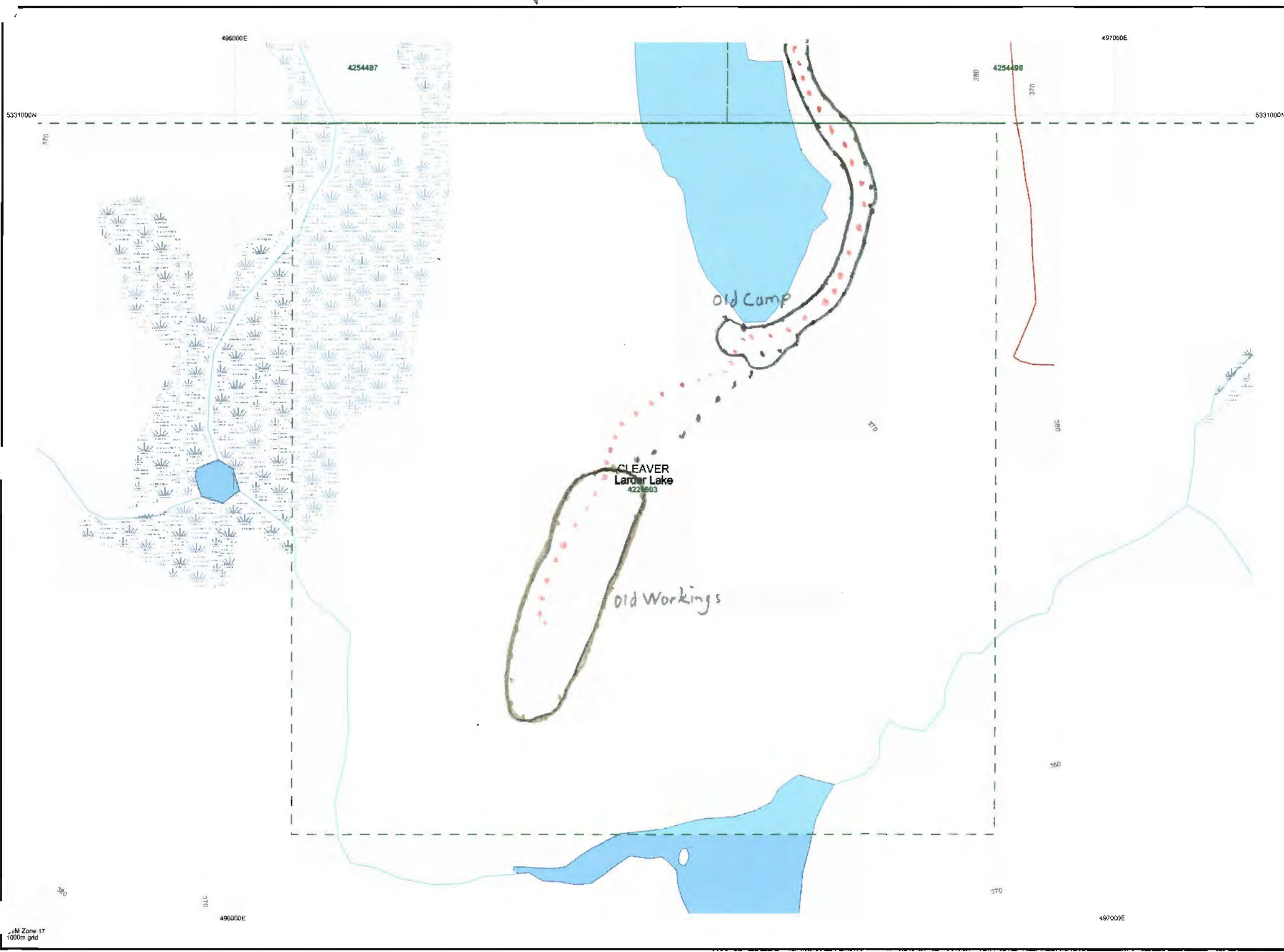
TOWNSHIP / AREA
CLEAVER

PLAN
G-3619

ADMINISTRATIVE DISTRICTS / DIVISIONS

Mining Division
Land Titles/Registry Division
Ministry of Natural Resources District

Larder Lake
TIMISKAMING
TIMMINS



TOPOGRAPHIC

- Administrative Boundaries
- Township
- Concession Lot
- Provincial Park
- Indian Reserve
- Cliff, Pit & Pile
- Contour
- Mine Shaft
- Mine Headframe
- Railway
- Road
- Trail
- Natural Gas Pipeline
- Utilities
- Tower

Land Tenure

- Freehold Patent**
 - Surface And Mining Rights
 - Surface Rights Only
 - Mining Rights Only
- Leasehold Patent**
 - Surface And Mining Rights
 - Surface Rights Only
 - Mining Rights Only
- License of Occupation**
 - Uses Not Specified
 - Surface And Mining Rights
 - Surface Rights Only
 - Mining Rights Only
 - Land Use Permit
 - Order in Council (Not open for staking)
 - Water Power Lease Agreement

ADAMS	ELDORADO	LANGRISH	BLACKBOCK
MCATHEAR	GOUGLAS	FALLOU	FASHER
BARTLETT	OSKE	CLEAVER	MCNEIL
ENGLISH	ZAVITZ	HURDIS	ARVYLE
SEMPLE	HUTT	MONTROSE	BANKOCKBURN

- Mining Claim
- Filled Only Mining Claims
- LAND TENURE WITHDRAWALS**
 - Areas Withdrawn from Disposition
 - Mining Acts Withdrawal Types
 - Surface And Mining Rights Withdrawn
 - Surface Rights Only Withdrawn
 - Mining Rights Only Withdrawn
 - Order in Council Withdrawal Types
 - Surface And Mining Rights Withdrawn
 - Surface Rights Only Withdrawn
 - Mining Rights Only Withdrawn
- IMPORTANT NOTICES



— Location of Transversers

Those wishing to stake mining claims should consult with the Provincial Mining Recorders' Office of the Ministry of Northern Development and Mines for additional information on the status of the lands shown hereon. This map is not intended for navigational, survey, or land title determination purposes as the information shown on this map is compiled from various sources. Completeness and accuracy are not guaranteed. Additional information may also be obtained through the local Land Titles or Registry Office, or the Ministry of Natural Resources.

The information shown is derived from digital data available in the Provincial Mining Recorders' Office at the time of downloading from the Ministry of Northern Development and Mines web site.

General Information and Limitations
 Contact Information:
 Provincial Mining Recorders' Office
 Willet Green Miller Centre 833 Ramsey Lake Road
 Sudbury ON P0E 0B6
 Home Page: www.mrdm.gov.on.ca/MNDM/MINES/LANDS/whsmapg.htm

Toll Free
 Tel: 1 (888) 415-0945 ext 574
 Fax: 1 (877) 670-1444

Map Datum: NAD 83
 Projection: UTM (8 degree)
 Topographic Data Source: Land Information Ontario
 Mining Land Tenure Source: Provincial Mining Recorders' Office

This map may not show unregistered land tenure and interests in land including certain patents, leases, easements, right of way, flooding rights, licenses, or other forms of disposition of rights and interest from the Crown. Also certain land tenure and land uses that restrict or prohibit free entry to stake mining claims may not be illustrated.