

2.49623

**PRELIMINARY PROPERTY EXAMINATION
PROSPECTING REPORT ON THE TELLURIDE LAKE PROPERTY
BEEMER TOWNSHIP , PORCUPINE MINING DIVISION
CLAIM # 4267626**

DATE OF COMPLETION OCT/2/2011

SUBMITTED BY : DAVID M LEFORT

HARD ROCK EXPLORATION



Table of Contents

- P1. Introduction and Work Performed
- P2. Introduction and Work Performed cont.
 - Recommendations and Conclusions
- P3. Access and Location
 - General Geology
 - Recorded Holders
 - Previous Exploration
- P4. Schedule/.Declaration of costs
 - Certificatiion
- P5. References
- P6. Location map
- P7. Claim map
- P8. Detailed map of showing

INTRO / WORK PERFORMED

On oct/1/2011 , a preliminary property examination was conducted on claim 4267626. This claim was staked centered on a known gold occurrence and the purpose of the work described in this report was to validate the existence/location of old workings and to examine the surrounding area. The work was performed by David M Lefort and Amanda L Grenon. From Timmins we drove south on pine st approx 32 km and then took a right hand turn on Beemer rd for approx 12 km, from the truck we traversed approx 300m south/ west until finding the gold occurrence we were looking for. (AMIS#00113)

A grub hoe, scalig bar, rock hammers, and back packs were carried through the bush, approx 75lbs of samples were carried out. Claim maps shows the site as having numerous roads through out the area, however, all roads have been grown in, except for an atv trail near the southern border of the claim which goes nowhere close to the shaft. A Garmin etrex legendHCx G.P.S and a compass were used to navigate to the co-ordinates obtained from A.M.I.S #00113.

No outcrops were encountered on the traverse into the site, mixed forest, forest floor completely covered with thick spongy carpet like moss. Approximately 45m north east began to encounter broken pieces of quartz (probably "fly muck" from earlier development)

The showing itself is a Quartz outcrop/Quartz mica schist, It is approx 40m long and 6m wide and the structure is generally oriented 260-270 AZ, dipping north (no face to measure dip). The quartz outcrop is generally a dull sugary white, Quartz where contact with schist is very rusty coloured, and seemingly more clear or transparent.

Mica schist where exposed to atmosphere has very bright staining of red to browns , purple to browns and yellowish/greens. When freshly bronen open, schist is light gray, silicate minerals present and appears to have bedding or layering like it has been stretched or squeezed. Mineral grains are fine and have a flat or platey like appearance under a hand lens, very sparkley when u shine sunlight on it and move it around.

A shaft was put down on the north side of the out crop, reportedly 25 feet by Svlanite Gold Mines, in the 1930s (A.M.I.S# 00113) The shaft is approx 2m x 2m, and is partially caved in due to rotting timbers. Water level is about 3m below surface, the east, west and north faces of the shaft are surrounded by a muck pile, presumably material excavated from the shaft, no attempt was made to sample inside the shaft as it to dangerous at this time and will need rehabilitation before it can be examined. A orange plastic construction fence was pulled out of the shaft and re-erected by hanging on surrounding small trees, an open hole sign was also picked up and posted in a tree in the best visible location should someone walk up to the shaft.

There is a trench approx 5m south of the shaft, refered to in this report as trench#1. It is approx 1.5m x 2m and was more of a slash of the south face of the outcrop than a true trench, however, The trench shows the contact of the quartz and the mica schist, quartz and schist very rusy coloured where the contact is made, malachite bloom was also noted. A total of three samples were taken from trench#1, sample#05916 schist, sample#05917 quartz and sample#05918 of qtz/schist contact.

These samples have not been sent for assay but will be used as a comparative sample to find similar mineralization, if any, on the property.

There is a trench approx 10m east of trench#1 and will be referred to in this report as trench#2. It is approx 1.5m x 1.5m and about the same in depth, shows much resemblance to trench#1, sample#05919 was taken but not assayed, to be used as comparative sample.

There is a third trench referred to in this report as trench#3, trench is approx 1m x 1m , and consists of dark grey igneous mafic rock , a few large pieces of quartz present, however, the trench was excavated with a grubhoe till the walls of the surrounding bedrock could be viewed, no quartz veining present and I suspect the quartz was fly muck from trench#1 as it is only a few meters north, sample#05920 of the dark mafic rock was taken but not assayed, to be used as comparative sample.

From the shaft area, the bush was further traversed in a S/W direction to the #3 corner of the claim, numerous old caved in log cabins by the shore of telluride lake, two of which are much older than others, as all that is left is a distinct square shape of the bottom row of decayed logs, of which are now moss covered. The two larger of the rotted camps were approx 8m x 8m. One of the smaller buildings had steel old steel plumbing of industrial grade(2" thick gauge union type pipe) and another small camp had a base with rubber engine mounts , possibly to hold some kind of generator or pump. Some of these buildings may have housed the equipment and men that performed the historical development workings described in this report. From this point we walked an atv trail that brought us out to the beemer rd, no other outcrops were found on the property during this visit.

Recommendations / Conclusions

It is concluded that the showing has favourable possibility for gold mineralization. It is recommended to do open cutting and stripping of the entire outcrop as it is partially covered with moss and smaller trees and that systematic blasting or channel sampling and assays be done along the outcrops entirety, also the shaft should be pumped and ground supported and then examined.

Access and Location

Access is gained to the property from Timmins via Pine st south approx 32km and then make a right on the Beemer logging road and continue approximately another 12km, from here a traverse must be made through the bush to the showing or an atv trail leading to telluride lake will take you to the southern border of the claim.

General Geology

The Beemer property lies in the Metavolcanic-Metasedimentary belt in the superior province of the Canadian shield. Early Precambrian (archean) Metavolcanic and Plutonic rocks underlie most of the property. Metavolcanics in the area consist mainly of massive and pillowed andesites which have been intruded by gabbroic and diorite dykes. The bedrock in the area is covered by a thick layer of Pleistocene glacial deposits of silt and sand. Numerous major north trending faults traverse the area. (Daigle,1997)

<u>Claim number</u>	<u># of units</u>	<u>Township</u>	<u>Recorded Holders</u>
4267626	1 unit	Beemer	50% David M Lefort 50% Shay B Simon

Previous Exploration

1925 J.C Nelson discovered gold at three locations near the north shore of telluride lake

1935 Sylvanite Gold Mines LTD , trenching,zone of quartz 20' x 150' exposed, 25' shaft sunk

1981 Lynco Exploration LTD , V.L.F, radiometric and mag surveys

1984-85 Marjel Resources INC , prospecting, mag survey

1988 American Barrick Resources CORP , diamond drilling, 5 holes, 3 holes near Nelson Showing

1995 Driver Resources LTD , linecut,mag,IP surveys

1997-99 Starfire minerals INC , time domain IP survey, diamond drilling, 16 holes

2008-09 Ashley Gold Mines/Ranger Resources INC/ Kirnova Corp , prospecting, mag and vlf survey

Schedule/Declaration of Costs

\$300 2 persons x 150 per day

\$50 food

\$60 fuel travel 130km to and from site and picking up supplies

\$20 misc supplies

\$150 preparation of report

Total

\$580

Certification

I David M Lefort of Timmins On hereby certify that :

1. I am owner/ operator of Hard Rock Exploration and have been in the exploration business since 2009.
2. I am a narrow vein stope miner and have 10 years experience mining, shafts, stopes, raises.
3. I have been directly employed with, Kirkland Lake Gold INC, Dumas Mining Contracting and Engineering, Trewlawney Mining and Exploration and Hard Rock Exploration
4. I have based conclusions and recommendations based on the work described in this report and general knowledge of the field.
5. I was present for all work described in this report.
6. The costs listed in the schedule/declaration of costs attached to this report are accurate and put towards the work described in this report.
7. All field samples ,field notes are accurate and kept at the office of David M Lefort/Hard Rock Exploration located at 573 spooner dr Timmins On.
8. I am the author of this report

References

Ploeger , Jason C 2009 mag,vlf report,Beemer twp. For Ashley Gold Mines/Ranger Resources Inc

Obtained from Geology Ontario at <http://www.geologyontario.mndm.gov.on.ca/>

Rungis, Amanda C 2008 prospecting report,Beemer twp. For Ashley Gold Mines/Ranger Resources Inc

Obtained from Geology Ontario at <http://www.geologyontario.mndm.gov.on.ca/>

Barber, Rodney A 1998 Report of work on the Spanride Property Beemer/English twp. For Starfire Minerals Inc

Obtained from Geology Ontario at <http://www.geologyontario.mndm.gov.ca/>

Daigle, R,J 1997 Report of Work for Drivers Resources Ltd

Obtained from Geology Ontario at <http://www.geologyontario.mndm.gov.ca/>

Lill, John R 1981 Report on Lynco Resources Inc Beemer Gold Prospect

Obtained from Geology Ontario at <http://www.geologyontario.mndmn.gov.ca/>

Ludwig, Edward 1985 Exploration Activities on the Beemer twp. Claim group for Marjel Resources Inc

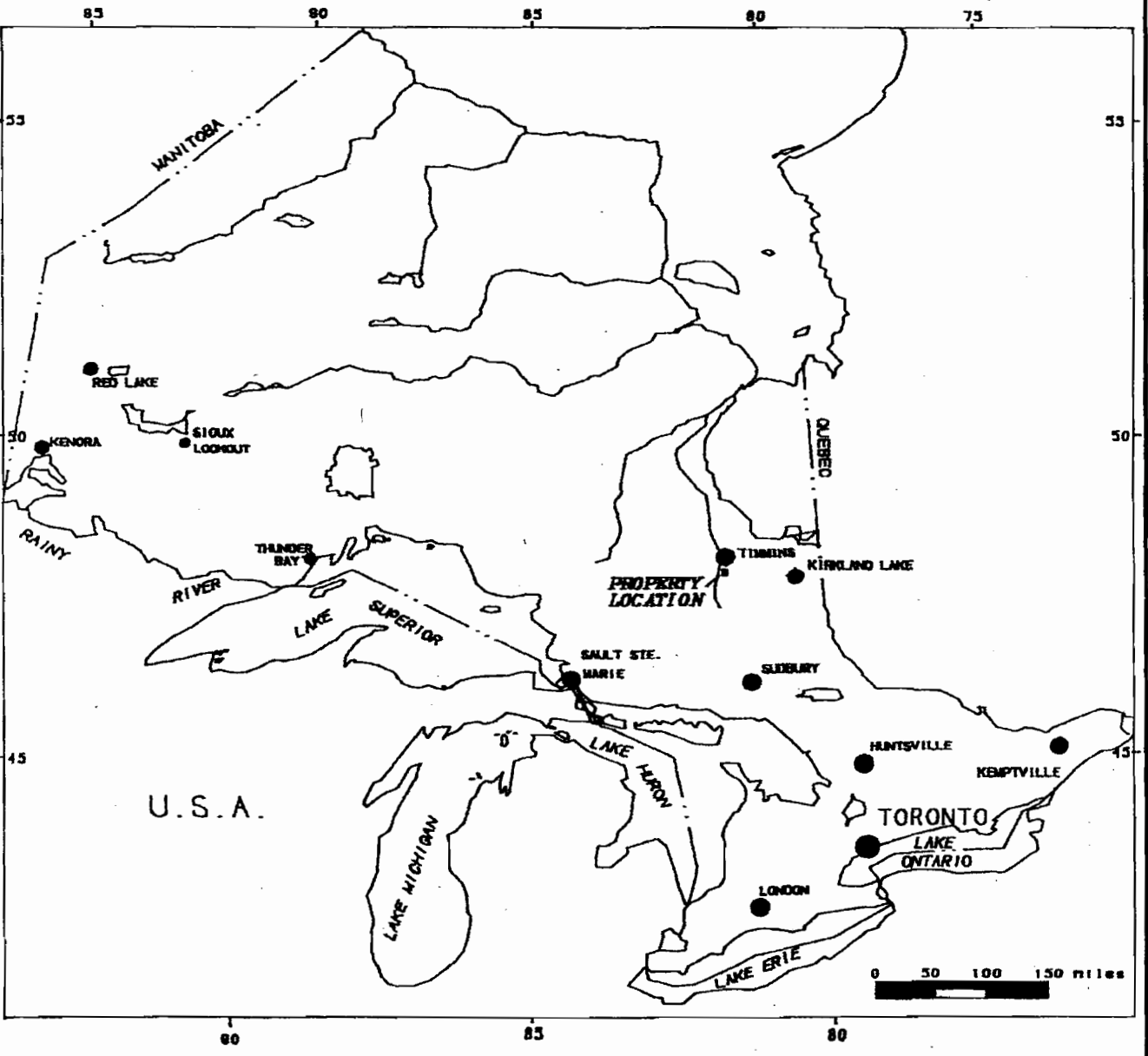
Obtained from Geology Ontario at <http://www.geologyontario.mndm.gov.ca/>

A.M.I.S file 00113

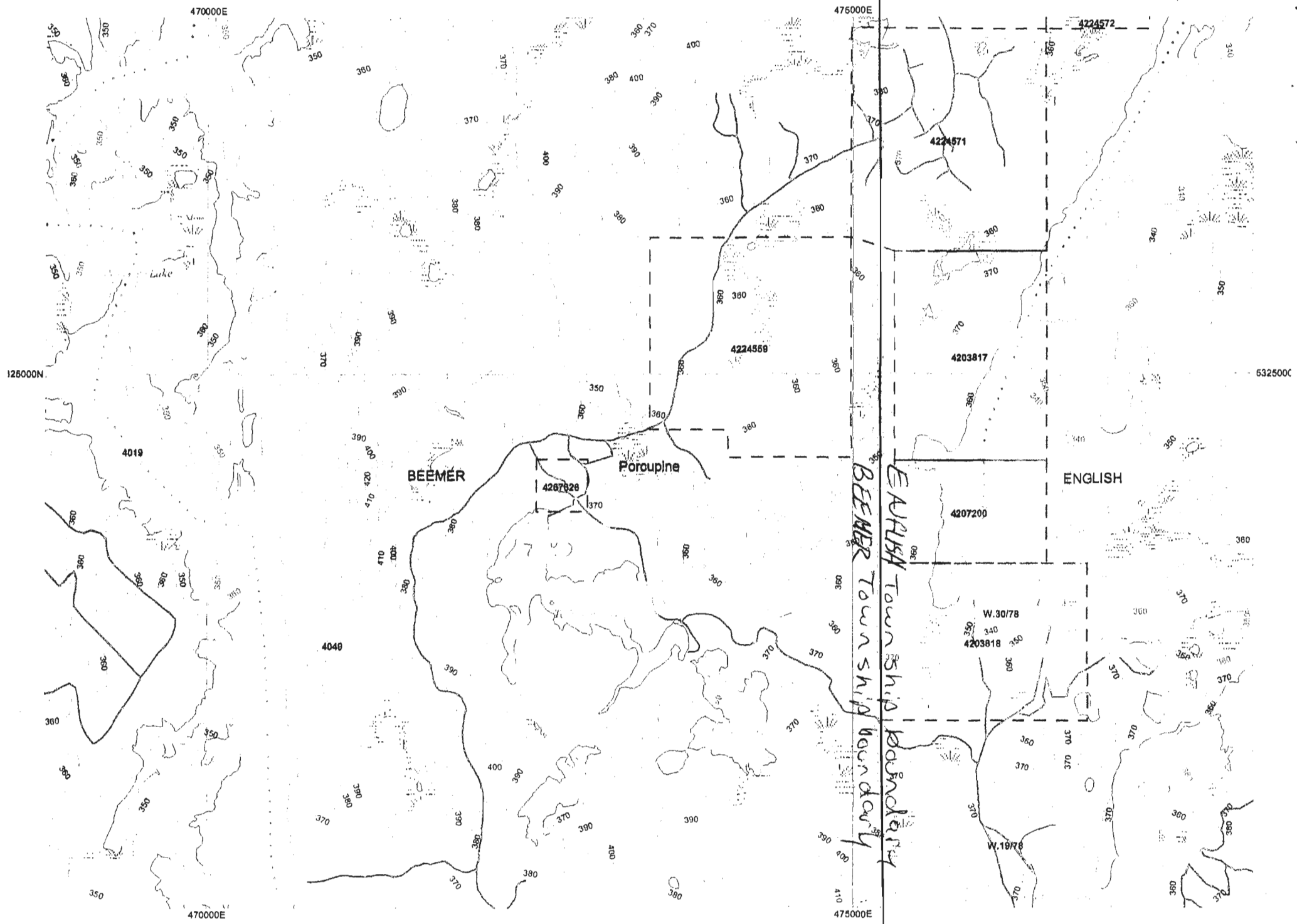
Obtained from Geology Ontario at <http://www.geologyontario.mndm.gov.ca/>

M.D.I 42A03SW00003

Obtained from Geology Ontario at <http://www.geologyontario.mndm.gov.ca/>



PROVINCE OF ONTARIO



Legend

▣ Shaft

□ Trench

O.C = Outcrop

↑ = mixed forest

⊕ = sample location

⊙ = muck pile

Scale = 1:200 (m)

UTM

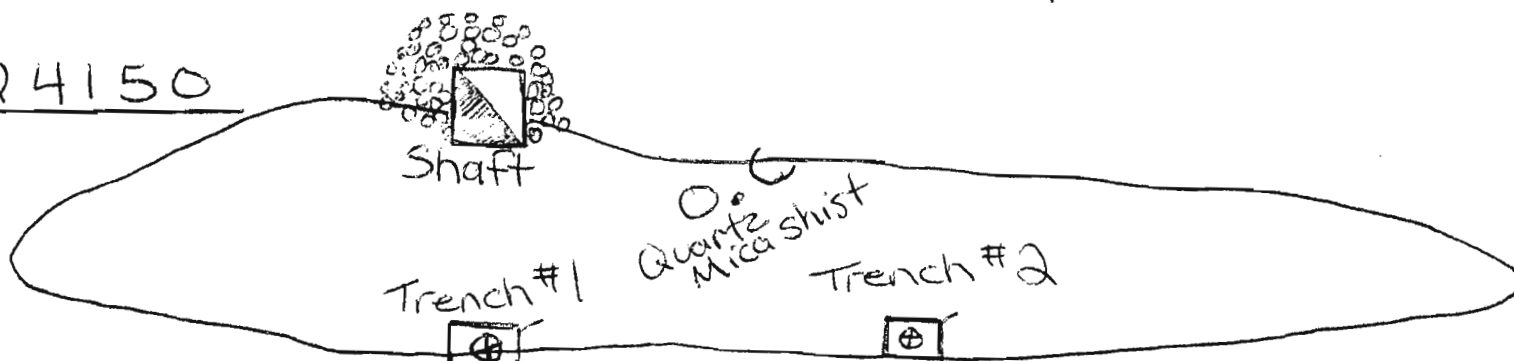
N 5324150

dec = 11° west



UTM
E 472745

Claim # 4267626 Beemer Township



Sample # 05916
05917
05918

Sample # 05919

Trench #3

Sample # 05920

O.C
Dark grey mafic

Drawn by: David H. [signature]



Shaft



Shaft
hung fence up, post sign



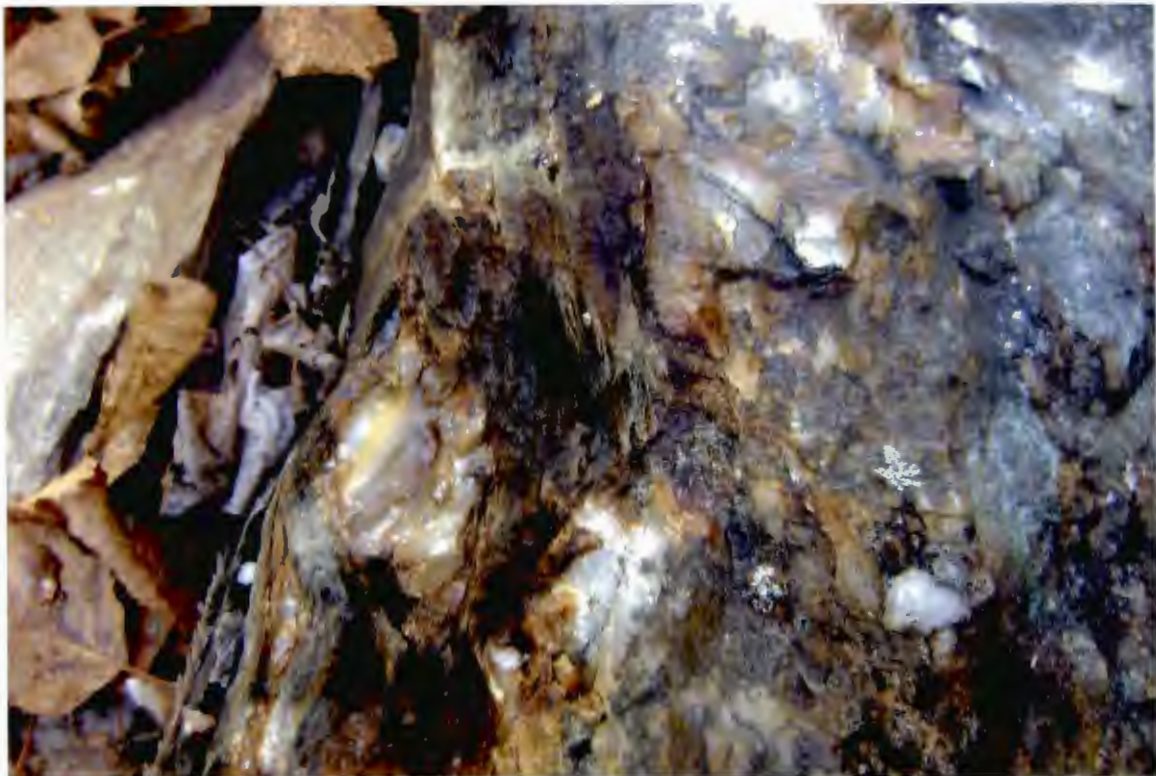
Shaft



Trench #1 Malachite
(copper bloom)



Trench #1



Trench #1



Trench #1