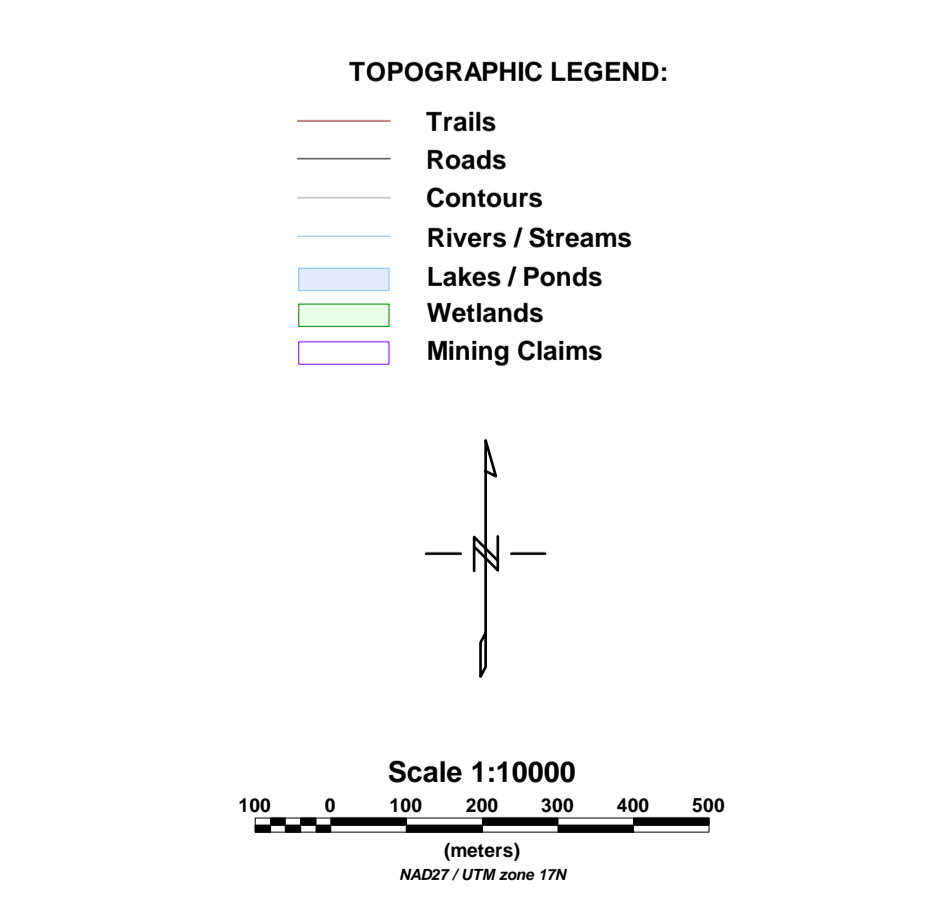
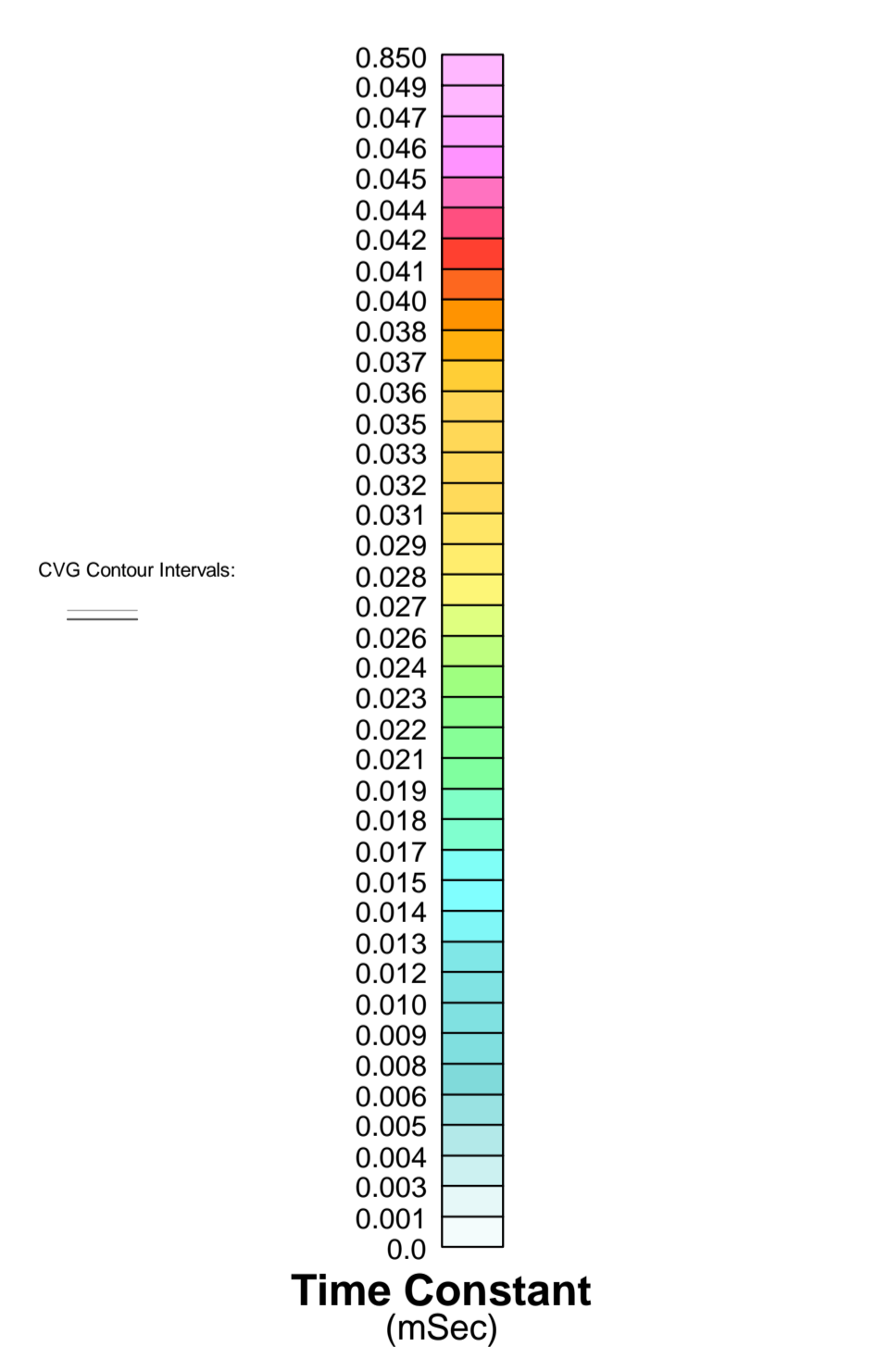
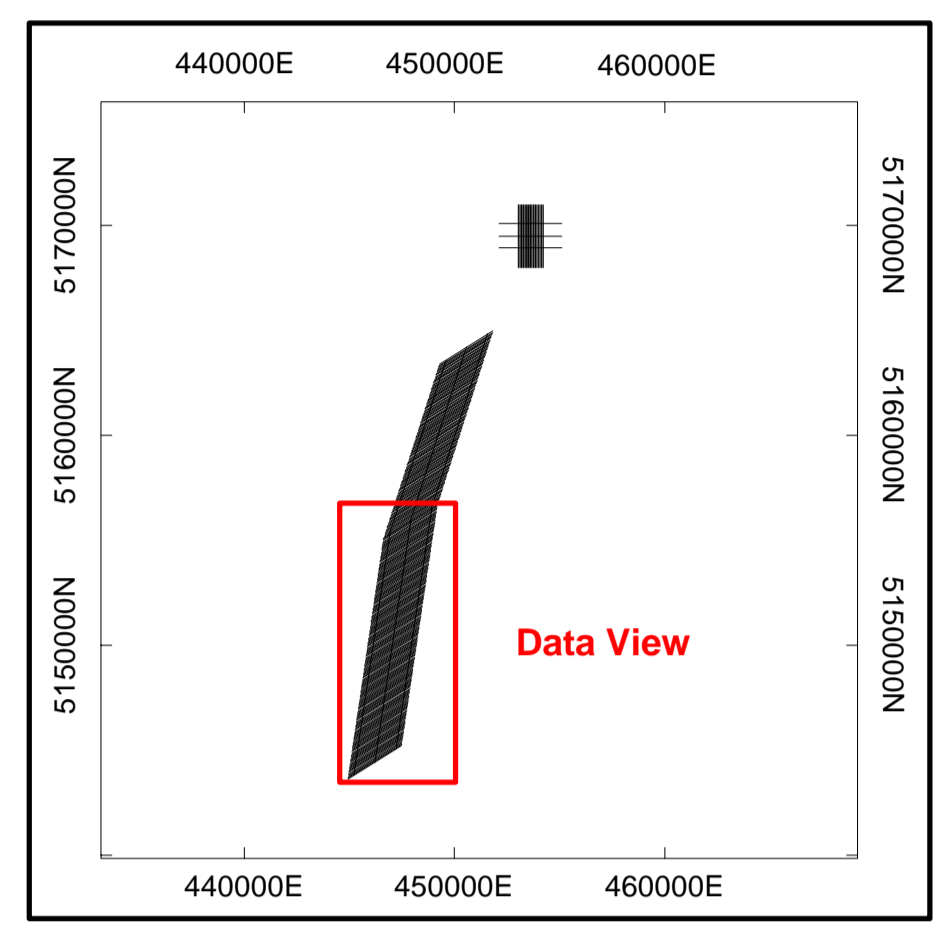


**SURVEY SPECIFICATIONS:**  
 Survey Date: May 4th to June 6th, 2011  
 Survey Base: Sudbury, Ontario  
 Aircraft: Aerospaciale A-Star 350 B3 (C-GEOC)  
 Nominal Survey Line Spacing: 50 Meters  
 Nominal Survey Line Direction: N 58° E / N 238° E  
 Nominal Tie Line Spacing: 800 Meters  
 Nominal Tie Line Direction: N 8° E / N 188° E  
 Nominal Terrain Clearance: 83 Meters  
 EM Loop: Towed at a mean distance of 35 meters below the Helicopter  
 Magnetic Sensor: Towed at a mean distance of 13 meters below the Helicopter

**INSTRUMENTS:**  
 Geotech Time Domain Electromagnetic System (VTM)  
 Concentric Rx/Tx Geometry  
 X-Coil Loop: Diameter 0.32 Meters, Base Frequency 30 Hz  
 Transmitter Loop: Diameter 26 Meters, Base Frequency 30 Hz  
 Dipole Moment: 354 000 mA  
 Transmitter Wave Form: Triangular, Pulse Width 7.21 ms  
 Geometrics High Sensitivity Cesium Magnetometer  
 Map Resolution: 0.02 nT at 10 samples/sec

**MAP PROJECTION:**  
 Datum: NAD 83  
 Projection: Universal Transverse Mercator  
 Central Meridian: 81°W (Zone 17N)  
 Central Scale Factor: 0.9996  
 False Easting/Northing: 500,000m/50m  
 Major Arcs: 6378206.4  
 Eccentricity: 0.08227186419  
 NPS: 0.000 0 0.000 0



Scale 1:10000  
 100 200 300 400 500  
 (Meters) UTM Zone 17N

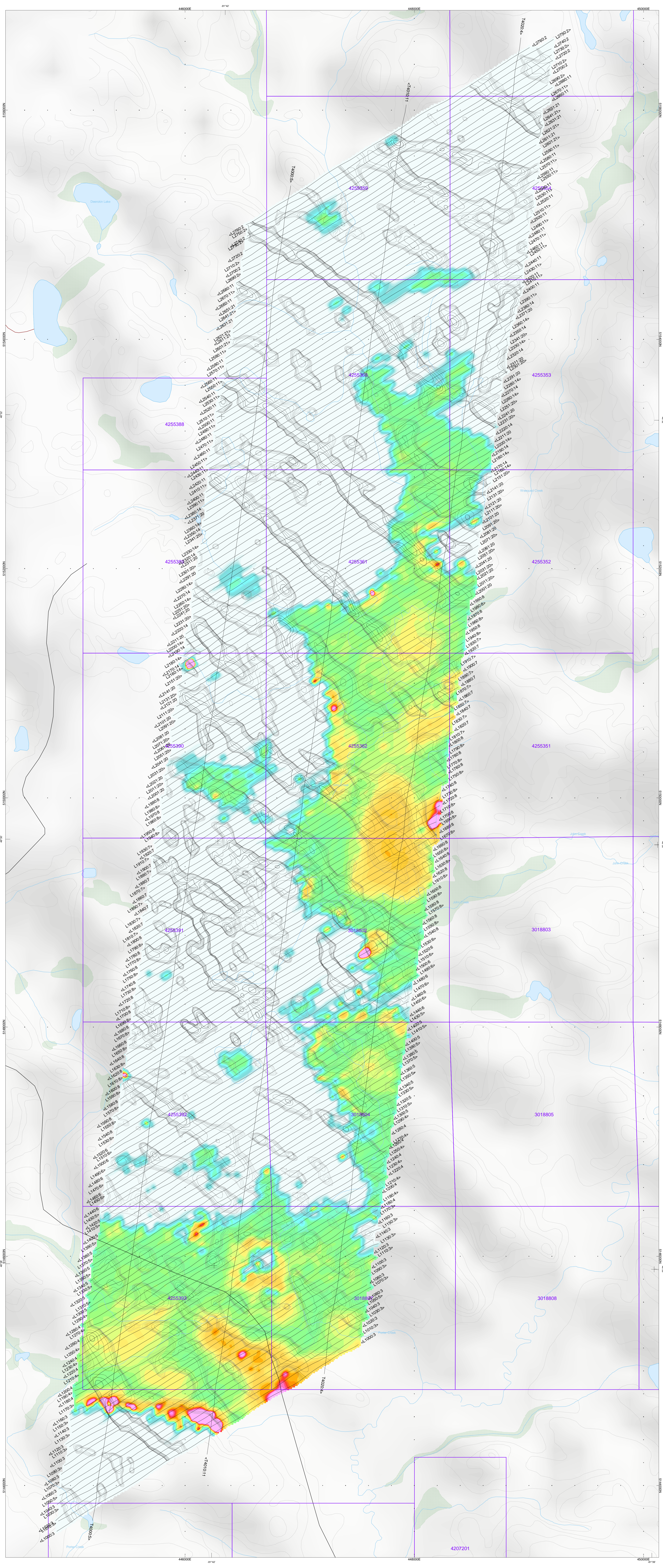
The topographic data base was derived from 1:50,000 NRC, Natural Resources Canada (NTDB) data. Background shading is derived from NADA 5776 (Shaded Relief) Topographic Dataset. Base data derived from Geomatics 1:250,000 Canadian National Topographic Database. Mining Claims are derived from the Ontario Ministry of Northern Development and Mines ([www.geomatics.com](http://www.geomatics.com)), ([www.geomatics.ca](http://www.geomatics.ca)) and (<http://www.mrdm.gov.on.ca>)

**Wallbridge Mining Company Limited**  
**Ermatinger Property - South (A)**  
**Sudbury, Ontario**

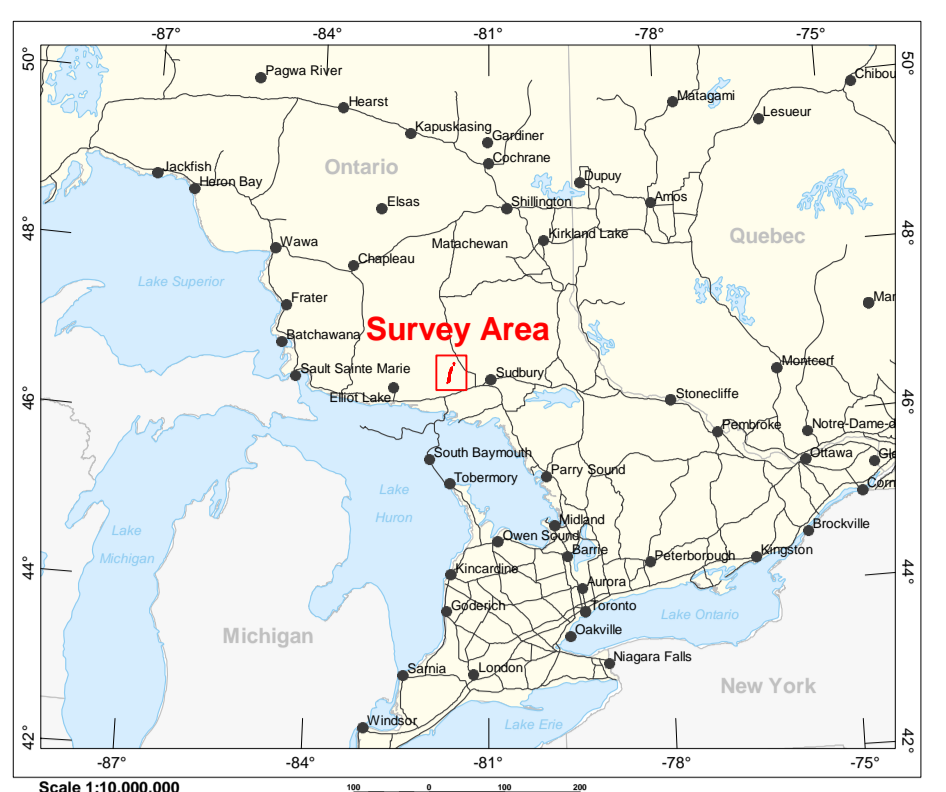
Geotech VTEM System  
 dB/dt Calculated Time Constant (Tau)  
 with contours of the anomaly area of the  
 Calculated Vertical Derivative of TMI

Flown and processed by Geotech Ltd.  
 245 Industrial Parkway North,  
 Aurora, Ontario, Canada L4G 4C4  
[www.geotech.ca](http://www.geotech.ca)

July 2011



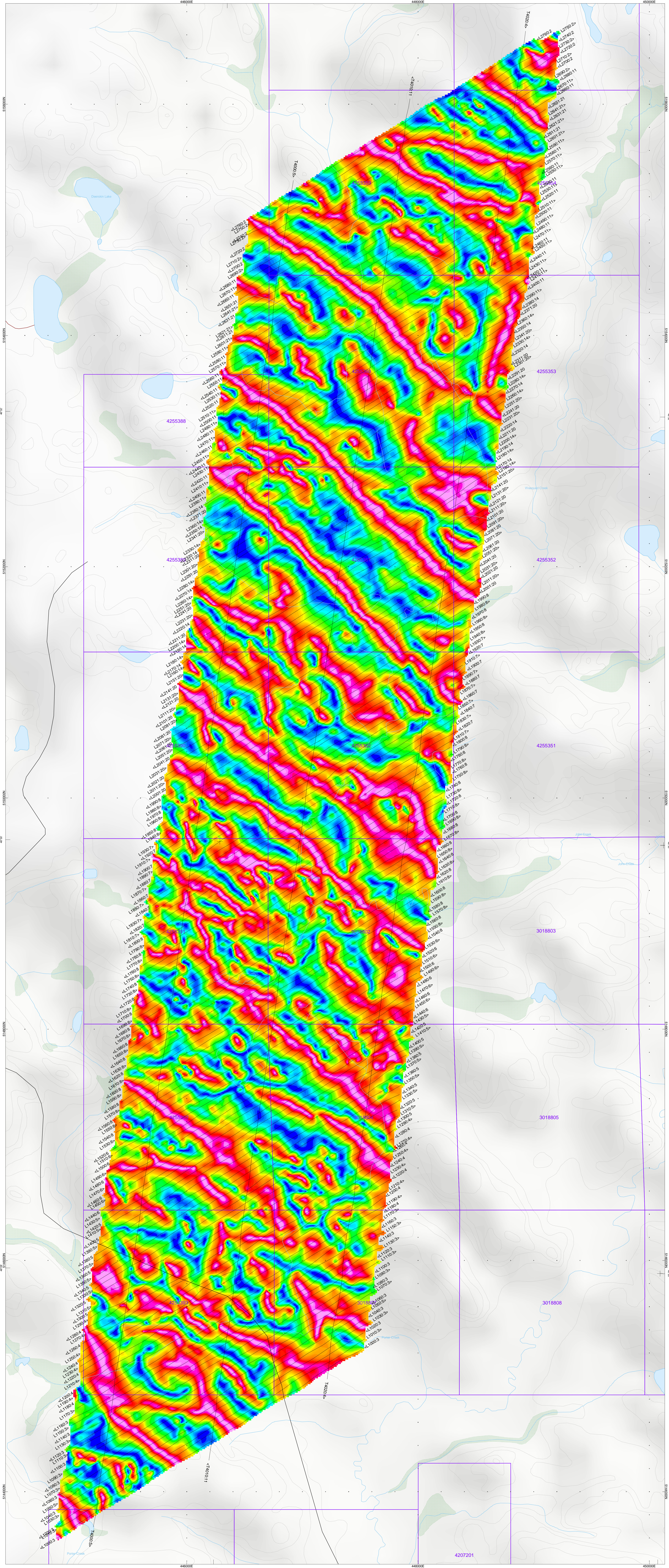
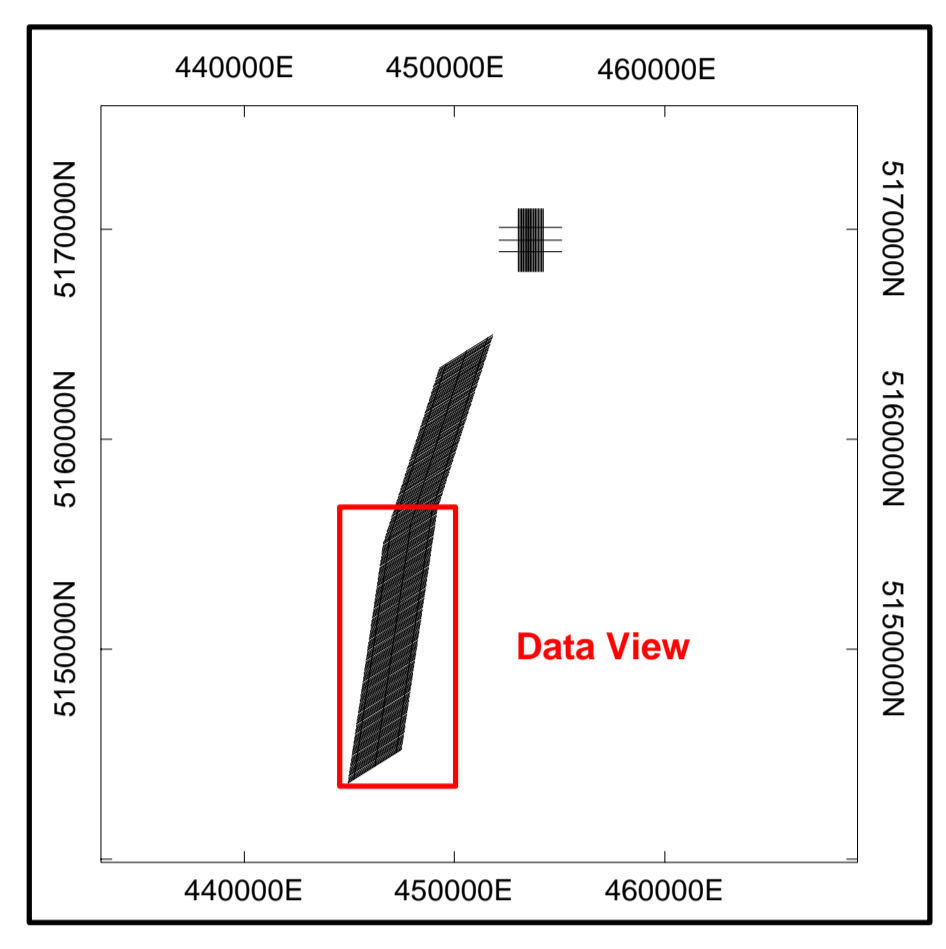




**SURVEY SPECIFICATIONS:**  
 Survey Date: May 4th to June 6th, 2011  
 Survey Base: Sudbury, Ontario  
 Aircraft: Aerospaciale A-Star 350 B3 (G-GEQC)  
 Nominal Survey Line Spacing: 50 Meters  
 Nominal Survey Line Direction: N 58° E N 238° E  
 Nominal Tilt Line Spacing: 800 Meters  
 Nominal Tilt Line Direction: N 6° E N 186° E  
 Nominal Terrain Clearance: 83 Meters  
 EM Loop: Towed at a mean distance of 25 meters below the Helicopter  
 Magnetic Sensor: Towed at a mean distance of 13 meters below the Helicopter

**INSTRUMENTS**  
 Geotek Time Domain Electromagnetic System (VTEM)  
 Concentric Rx/Tx Geometry  
 X-Coil Loop: Diameter 0.32 Meters, Base Frequency 30 Hz  
 Transmitter Loop: Diameter 25 Meters, Base Frequency 30 Hz  
 Dipole Moment: 354,600 mA  
 Transmitter Wave Form: Triangular Pulse Width 7.21 ms  
 Geotek High Sensitivity Cesium Magnetometer  
 Mag Resolution: 0.02 nT at 10 samples/sec

**MAP PROJECTION**  
 Datum: NAD 27  
 Projection: Universal Transverse Mercator  
 Central Meridian: 81°W (Zone 17N)  
 Central Scale Factor: 0.9996  
 False Easting/Origin: 500,000m  
 Major Axis: 6378264  
 Eccentricity: 0.08227185419  
 NAD: GRS 80 & 84/85



**TOPOGRAPHIC LEGEND:**

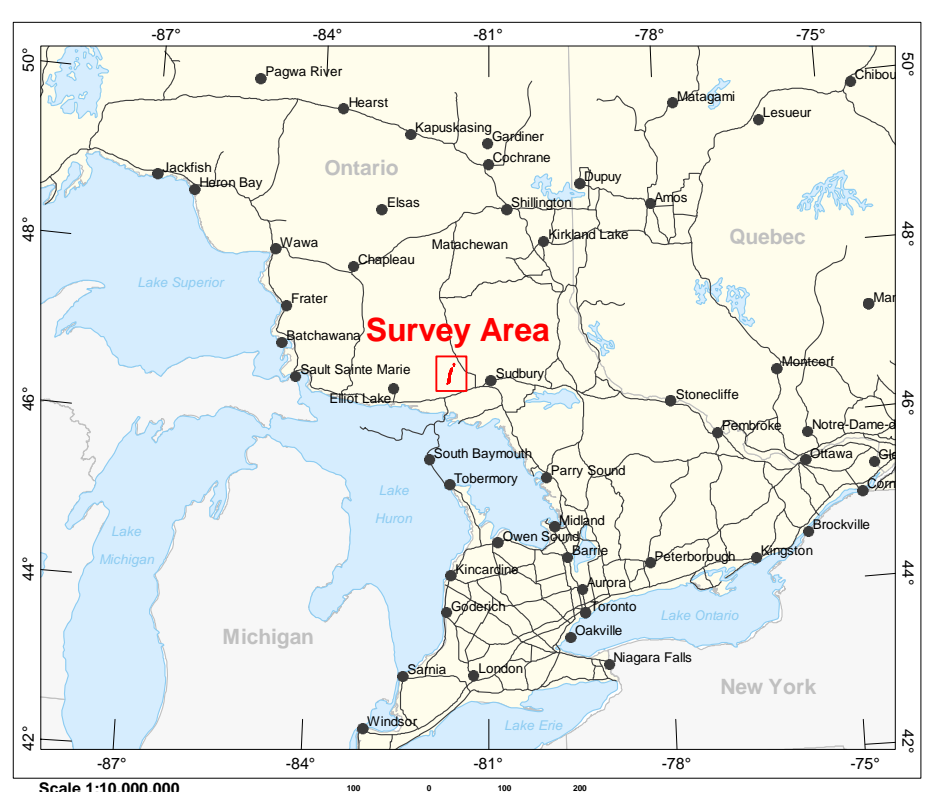
- Trails
- Roads
- Rivers / Streams
- Lakes / Ponds
- Wetlands
- Mining Claims

**Tilt Derivative (radians)**

Scale 1:10000  
 (meters)

The topographic data base was derived from 1:50000 NSR (Natural Resources Canada) MTB data. Background shading is derived from NSR 5076 (Shaded Relief) Topographic Record data. Base data derived from Geotitles 1:250,000 Canadian National Topographic database. Mining Claims are derived from the Geotitles Office of Northern Development and Mines ([www.geotitles.com](http://www.geotitles.com)) (<http://www.nrdm.gov.on.ca>)

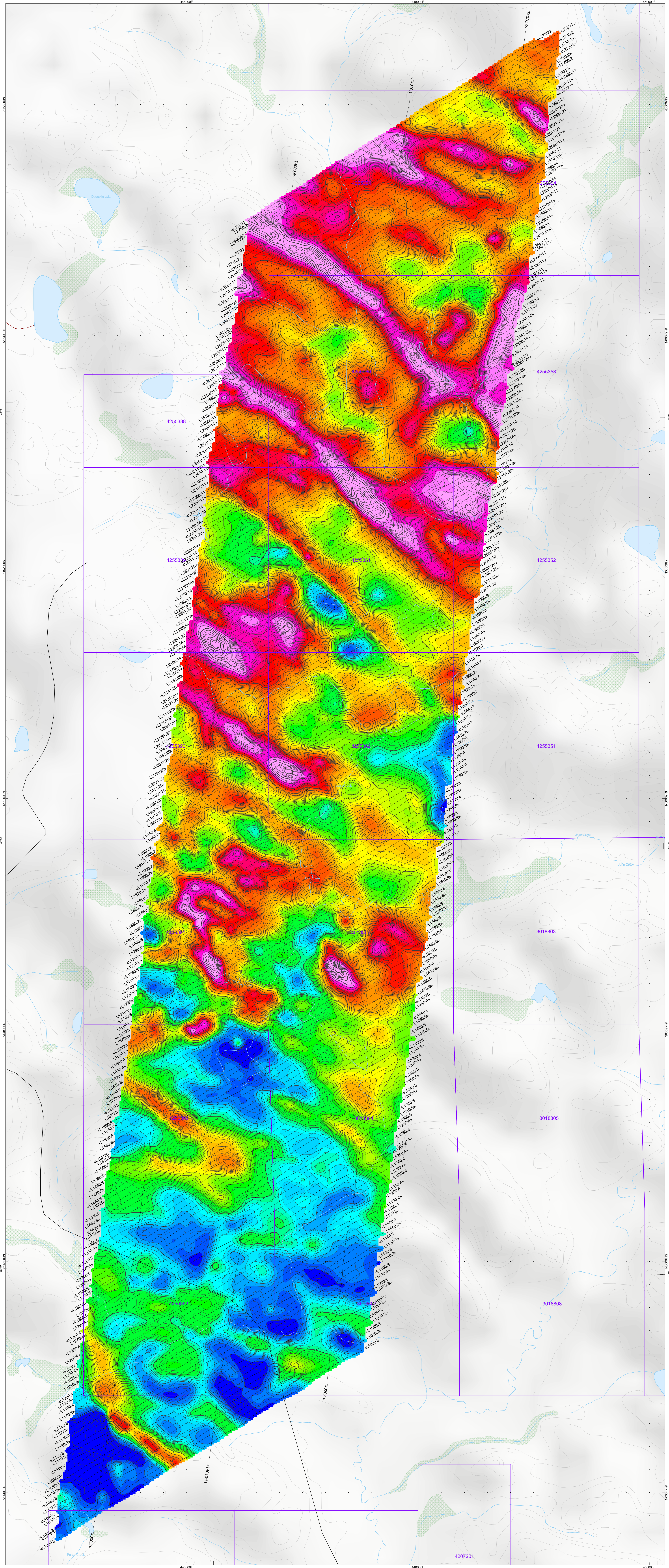
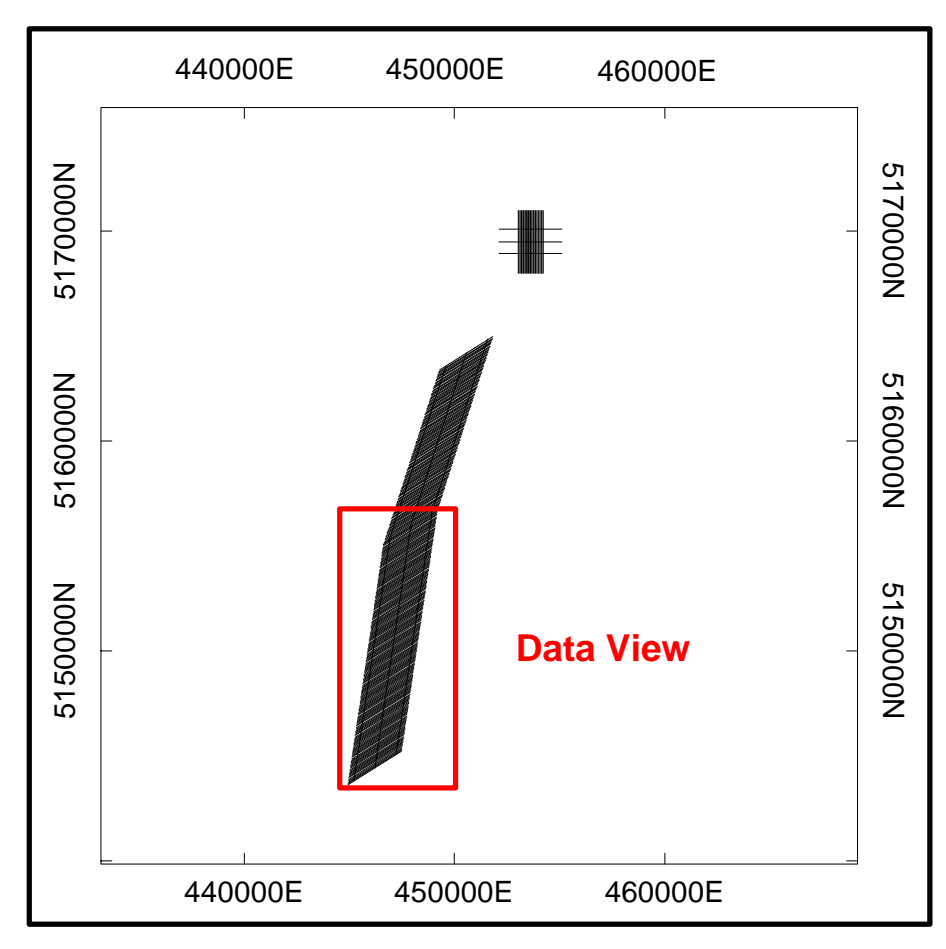




**SURVEY SPECIFICATIONS:**  
 Survey Date: May 4th to June 6th, 2011  
 Survey Base: Sudbury, Ontario  
 Aircraft: Aerospaciale A-Star 350 B3 (C-GEOC)  
 Nominal Survey Line Spacing: 50 Meters  
 Nominal Survey Line Direction: N 58° E / N 238° E  
 Nominal Tilt Line Spacing: 800 Meters  
 Nominal Tilt Line Direction: N 8° E / N 188° E  
 Nominal Terrain Clearance: 83 Meters  
 EM Loop: Towed at a mean distance of 25 meters below the Helicopter  
 Magnetic Sensor: Towed at a mean distance of 13 meters below the Helicopter

**INSTRUMENTS**  
 Geotech Time Domain Electromagnetic System (VTEM)  
 Concentric Rx/Tx Geometry  
 X-Coil Loop: Diameter 0.32 Meters, Base Frequency 30 Hz  
 Transmitter Loop: Diameter 25 Meters, Base Frequency 30 Hz  
 Dipole Moment: 354,660 nA  
 Transmitter Wave Form: Trapezoidal, Pulse Width 7.21 ms  
 Geometrics High Sensitivity Cesium Magnetometer  
 Mag Resolution: 0.02 nT at 10 samples/sec

**MAP PROJECTION:**  
 Datum: NAD 27  
 Projection: Universal Transverse Mercator  
 Central Meridian: 81°W (Zone 17N)  
 Central Scale Factor: 0.9996  
 False Easting/Origin: 500,000m  
 Major Axis: 6378206.4  
 Eccentricity: 0.08227185419  
 NFA: 61765 & 64812



**TM Contour Interval:**  
 5 nT  
 25 nT

**TM (nT)**

56100
56080
56060
56040
56020
56000
55980
55960
55940
55920
55900
55880
55860
55840
55820
55800
55780
55760
55740
55720
55700
55680
55660
55640
55620
55600
55580
55560
55540
55520
55500

**TOPOGRAPHIC LEGEND:**

- Trails
- Roads
- Contours
- Rivers / Streams
- Lakes / Ponds
- Wetlands
- Mining Claims

**Scale 1:10000**  
 100 0 100 200 300 400 500  
 (meters)  
 NAD27 UTM Zone 17N

The topographic data base was derived from 1:50,000 NRC, Natural Resources Canada's NTDB data. Background shading is derived from NAD27 1:50,000 Shaded Relief Topographic Record data. Base data derived from Geomatics 1:250,000 Canadian National Topographic database. Mining Claims are derived from the Ontario Ministry of Northern Development and Mines ([www.geomatics.ca](http://www.geomatics.ca)) (<http://www.mrdm.gov.on.ca>).

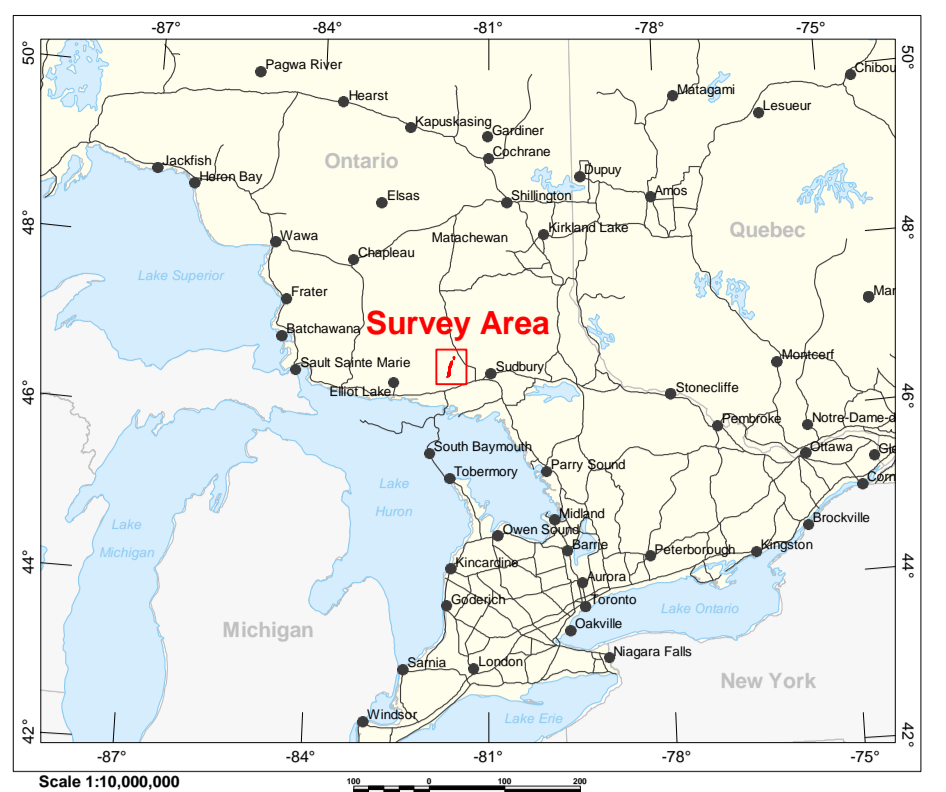
**Wallbridge Mining Company Limited**  
 Ermatinger Property - South (A)  
 Sudbury, Ontario

Geotech VTEM System  
**Total Magnetic Intensity (TMI)**

Flown and processed by Geotech Ltd.  
 245 Industrial Parkway North,  
 Aurora, Ontario, Canada L4G 4C4  
 www.geotech.ca

July 2011

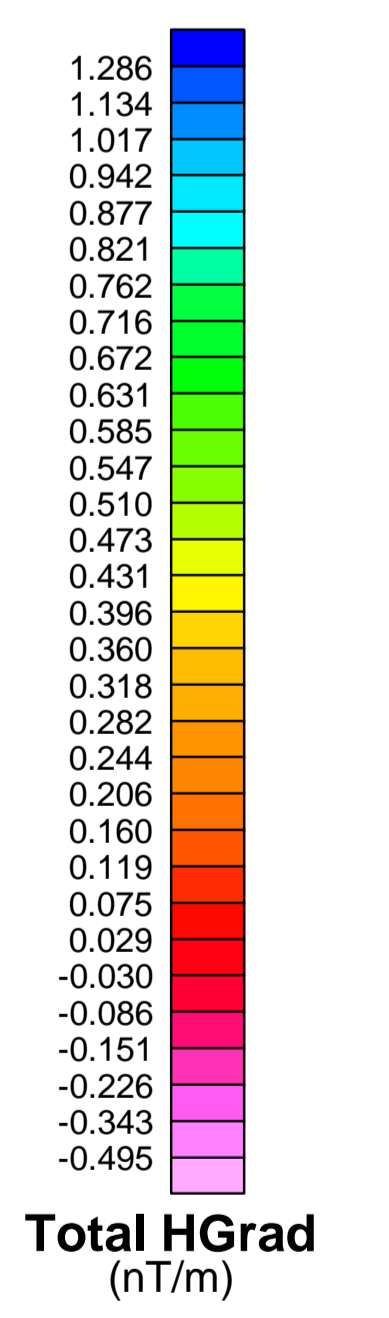
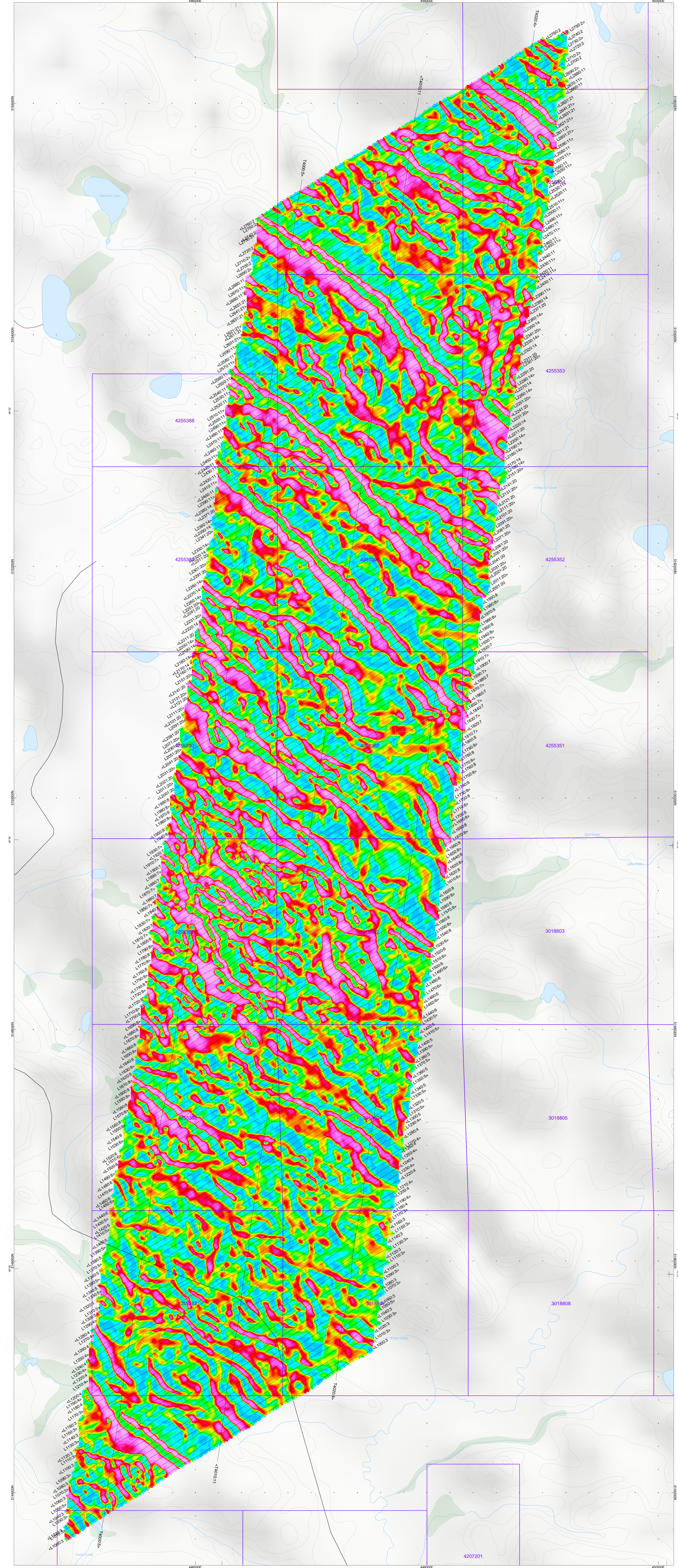
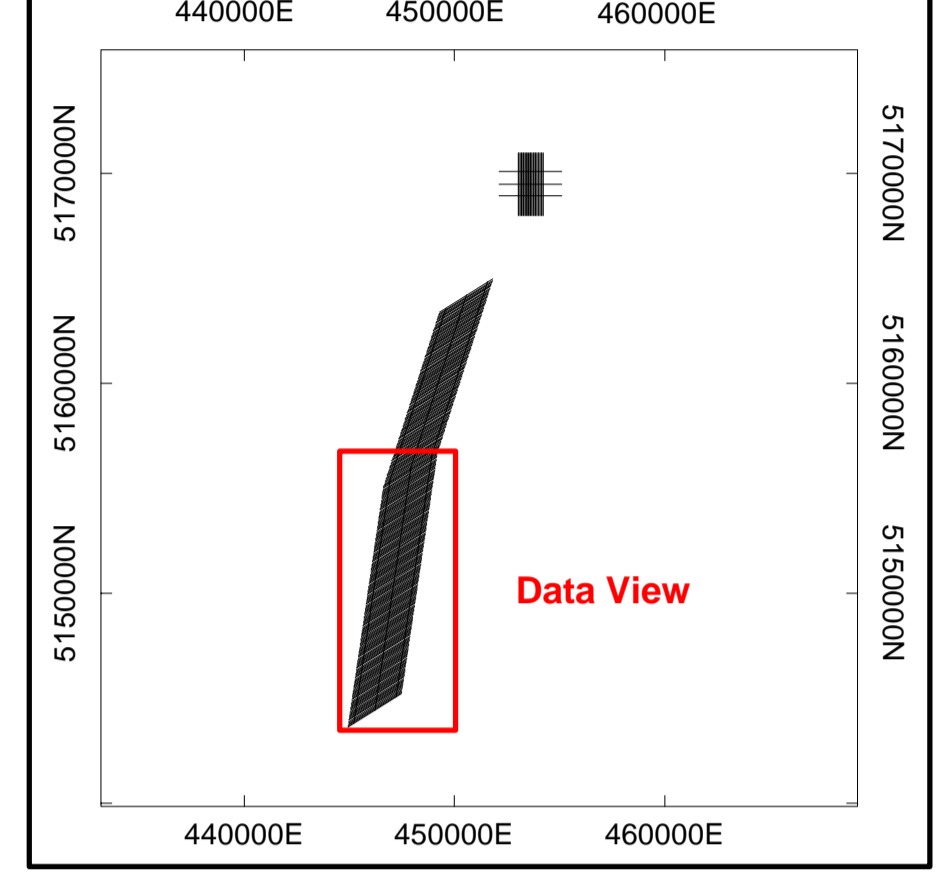




**SURVEY SPECIFICATIONS:**  
 Survey Date: May 4th to June 6th, 2011  
 Survey Base: Sudbury, Ontario  
 Aircraft: Aerospaciale A-Star 350 B3 (C-GEOC)  
 Nominal Survey Line Spacing: 50 Meters  
 Nominal Survey Line Direction: N 58° E / N 238° E  
 Nominal Tie Line Spacing: 800 Meters  
 Nominal Tie Line Direction: N 8° E / N 188° E  
 Nominal Terrain Clearance: 83 Meters  
 EM Loop: Towed at a mean distance of 35 meters below the Helicopter  
 Magnetic Sensor: Towed at a mean distance of 13 meters below the Helicopter

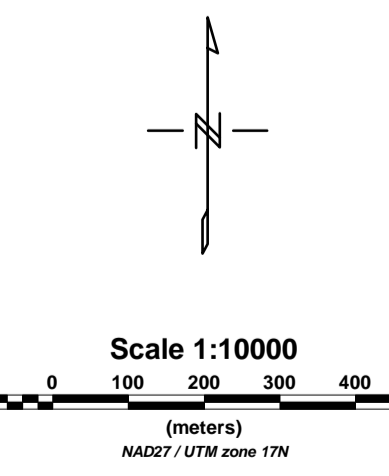
**INSTRUMENTS:**  
 Geosoft Time Domain Electromagnetic System (TDEM)  
 Concentric Rx/Tx Geometry  
 X-Coil Loop: Diameter 0.32 Meters, Base Frequency 30 Hz  
 Transmitter Loop: Diameter 26 Meters, Base Frequency 30 Hz  
 Dipole Moment: 354 000 mA  
 Transmitter Wave Form: Trapezoidal, Pulse Width 7.21 ms  
 Geometrics High Sensitivity Cesium Magnetometer  
 Map Resolution: 0.02 nT at 10 samples/coils

**MAP PROJECTION:**  
 Datum: NAD 83  
 Projection: Universal Transverse Mercator  
 Central Meridian: 81°W (Zone 17N)  
 Central Scale Factor: 0.9996  
 False Easting/Northing: 500,000.00m/0m  
 Major Axis: 6378264.4  
 Eccentricity: 0.082271854219  
 NPS: 0.000 0.000



**TOPOGRAPHIC LEGEND:**

- Trails
- Roads
- Contours
- Rivers / Streams
- Lakes / Ponds
- Wetlands
- Mining Claims



The topographic data base was derived from 1:50,000 NRC, Natural Resources Canada (NRC) data. Background shading is derived from NADA 5878 (Shaded Relief) Topographic Dataset. Data base data derived from Geosoft/MapInfo 1:250,000 Canadian National Topographic Database. Mining Claims are derived from the Ontario Ministry of Northern Development and Mines (<http://www.gov.on.ca/nrc/geoparc.ca/ftp/ftp.nrcdm.gov.on.ca/>)

**Wallbridge Mining Company Limited**  
 Ermatinger Property - South (A)  
 Sudbury, Ontario

Geotech VTEM System  
**Total Horizontal Gradient of TMI**

Flown and processed by Geotech Ltd.  
 245 Industrial Parkway North,  
 Aurora, Ontario, Canada L4G 4C4  
 www.geotech.ca

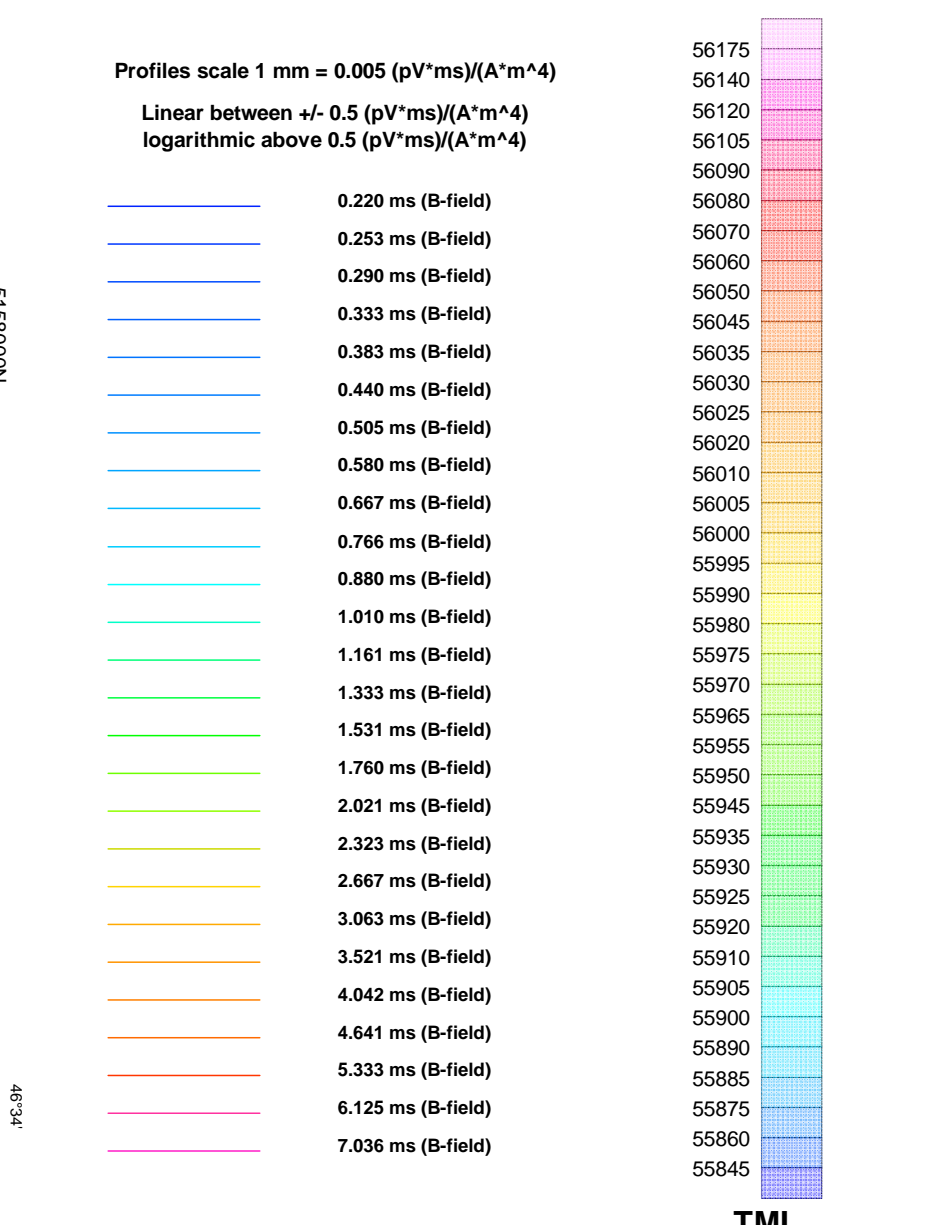
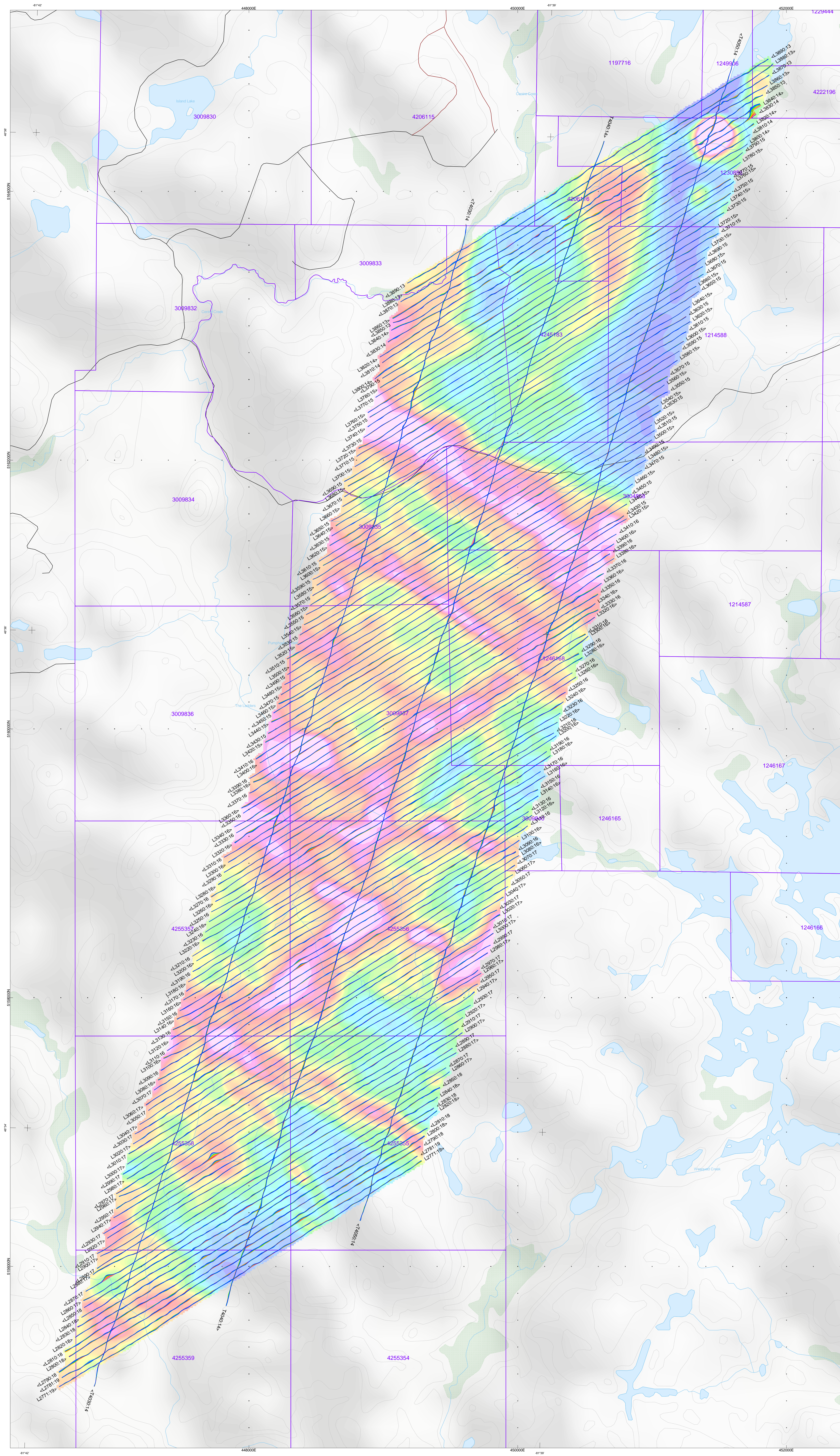
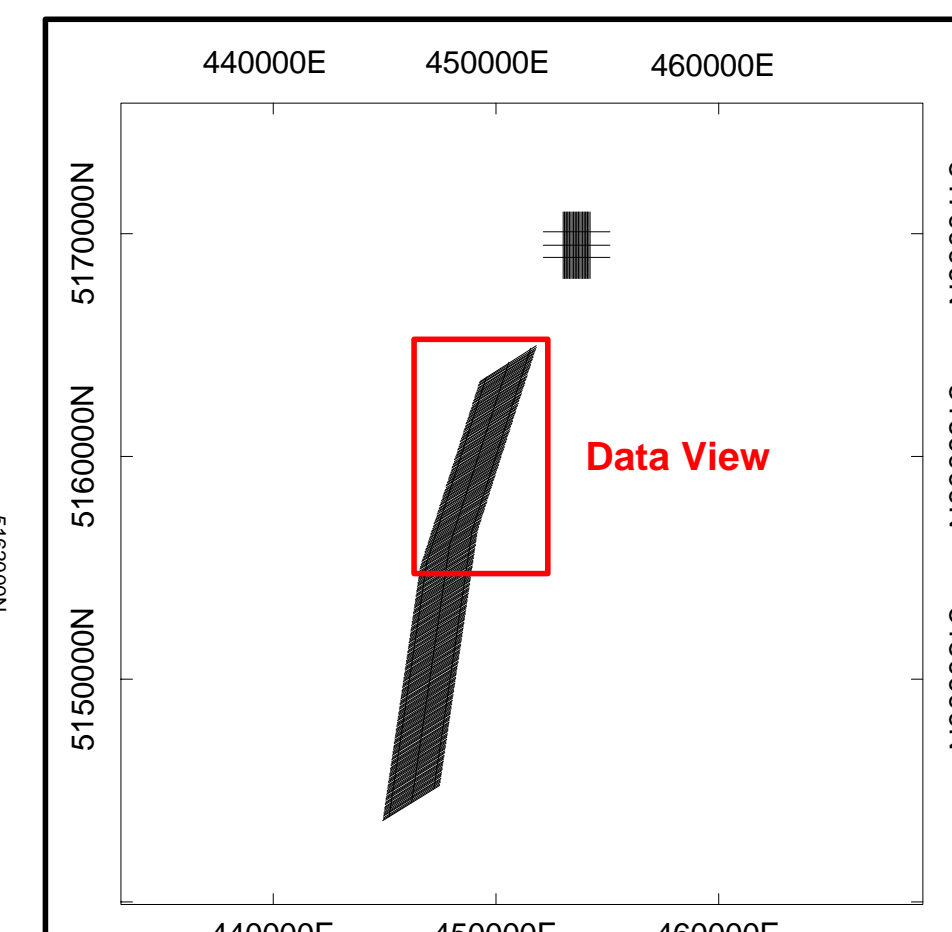




**SURVEY SPECIFICATIONS:**  
 Survey Date: May 10 to June 06, 2011  
 Survey Base: Sudbury, Ontario  
 Aircraft: Aerospaciale A-Star 350 B3 (C-GEOC)  
 Nominal Survey Line Spacing: 50 Meters  
 Nominal Survey Line Direction: N 58° E / N 238° E  
 Nominal Tie Line Direction: N 8° E / N 198° E  
 Nominal Terrain Clearance: 83 Meters  
 EM Loop: Towed at a mean distance of 35 meters below the Helicopter  
 Magnetic Sensor: Towed at a mean distance of 15 meters below the Helicopter

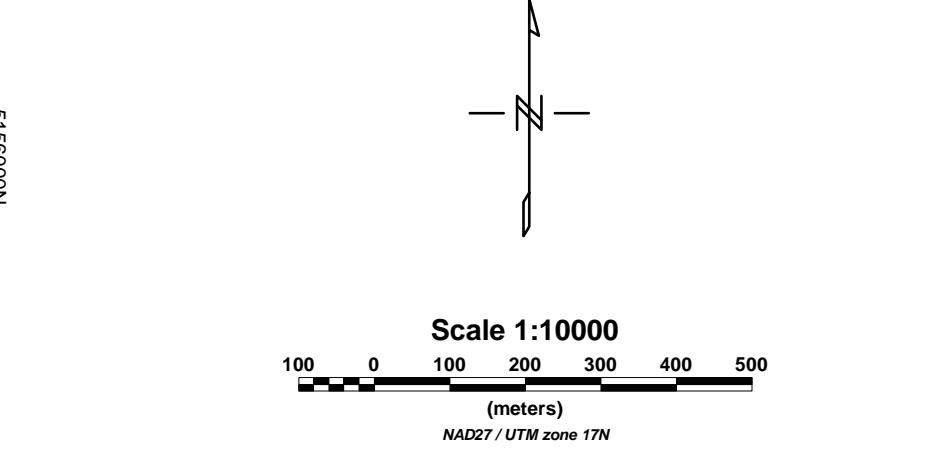
**INSTRUMENTS**  
 Geotech Time Domain Electromagnetic System (VTM)  
 Concentric P/T's Geometry  
 X-Coil Loop: Diameter 0.32 Meters, Base Frequency 30 Hz  
 Transmitter Loop: Diameter 26 Meters, Base Frequency 30 Hz  
 Dipole Moment: 354,650 m<sup>2</sup>A  
 Transmitter Wave Form: Trapezoid, Pulse Width 7.21 ms  
 Geometrics High Sensitivity Cesium Magnetometer  
 Map Resolution: 0.02 m at 10 samples/m

**MAP PROJECTION**  
 Datum: NAD 27  
 Projection: Universal Transverse Mercator  
 Central Meridian: 81°W (Zone 17N)  
 Central Scale Factor: 0.9996  
 False Easting/Northing: 500,000m/0m  
 Major Axis: 6378296.4  
 Eccentricity: 0.02271854219  
 NTS: 04185 & 04182



**TOPOGRAPHIC LEGEND:**

- Trails
- Roads
- Contours
- Rivers / Streams
- Lakes / Ponds
- Wetlands
- Mining Claims



The topographic data base was derived from 1:50,000 NRC (Natural Resources Canada) NTDB data. Background shading is derived from NAD83 (1983) Shuttle Radar Topographic Mission data. Inset data derived from Geocommunities 1:250,000 Canadian National Topographic Database. Mining Claims are derived from the Ontario Ministry of Northern Development and Mines ([www.geocomm.com](http://www.geocomm.com)) ([www.geomatics.ca](http://www.geomatics.ca)) (<http://www.mdm.gov.on.ca>)

**Wallbridge Mining Company Limited**  
 Ermatinger Property - South (B)  
 Sudbury, Ontario

Geotech VTEM Profiles  
 Z-Coil B-field System  
 Time Gates 0.220 to 7.036 ms  
 displayed over TMI

Flown and processed by Geotech Ltd.  
 245 Industrial Parkway North,  
 Aurora, Ontario, Canada L4G 4C4  
 www.geotech.ca

July 2011

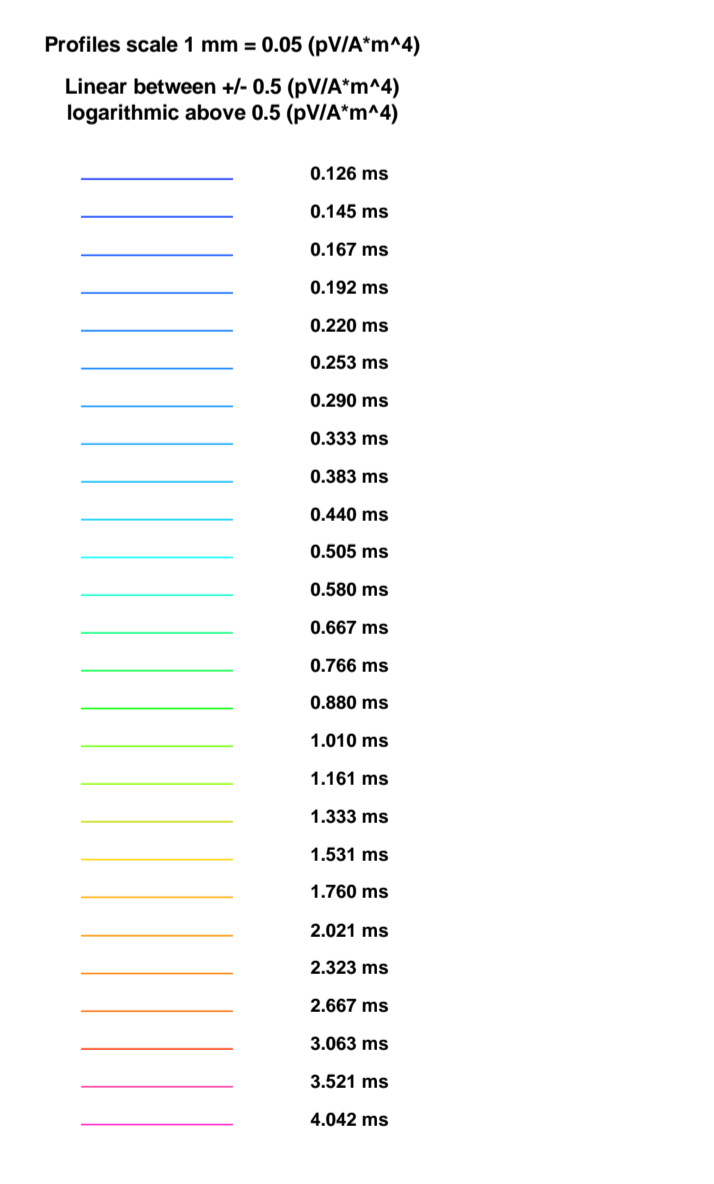
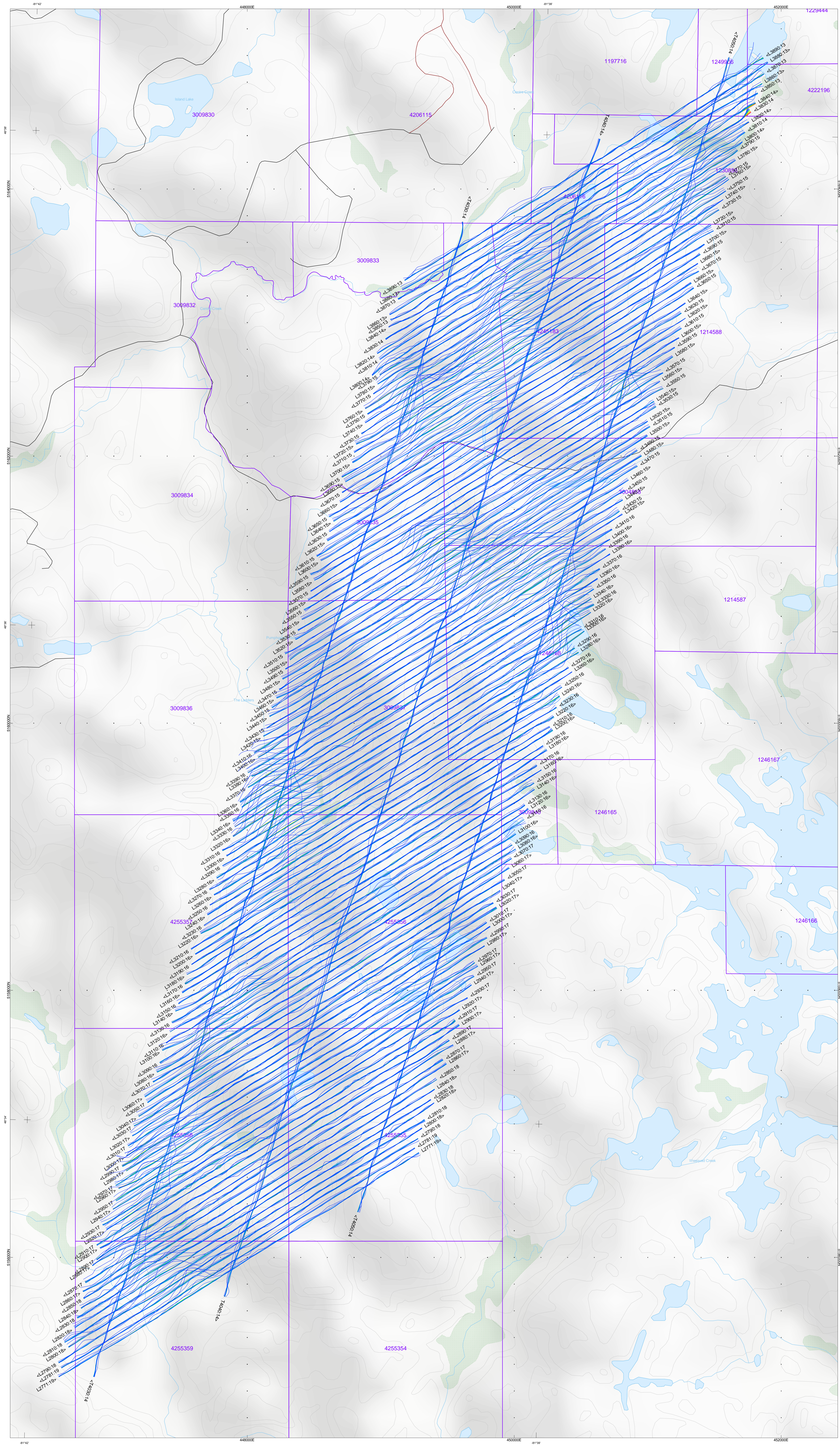
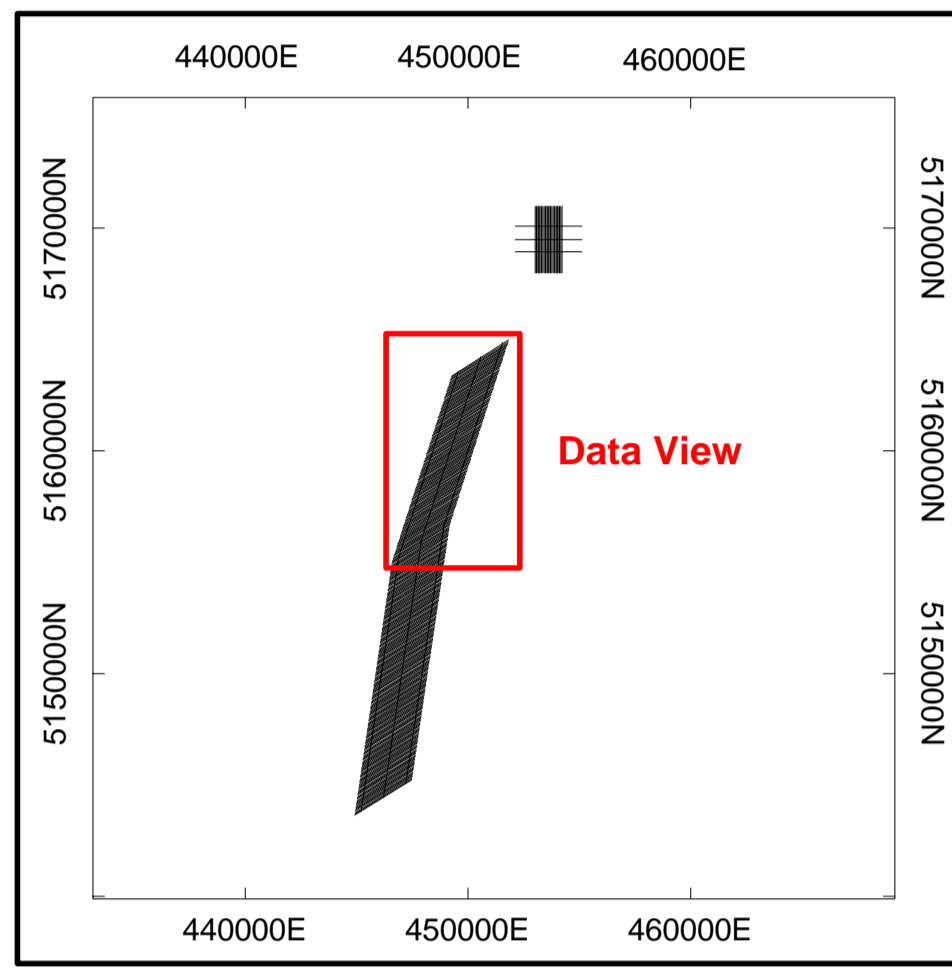




**SURVEY SPECIFICATIONS:**  
 Survey Date: May 4th to June 6th, 2011  
 Survey Base: Sudbury, Ontario  
 Aircraft: Aerospaciale A-Star 350 B3 (C-GEOC)  
 Nominal Survey Line Spacing: 50 Meters  
 Nominal Survey Line Direction: N 58° E / N 238° E  
 Nominal Tie Line Direction: N 8° E / N 192° E  
 Nominal Tie Line Spacing: 500 Meters  
 Nominal Tie Line Direction: N 8° E / N 192° E  
 Nominal Terrain Clearance: 83 Meters  
 EM Loop: Towed at a mean distance of 35 meters below the Helicopter  
 Magnetic Sensor: Towed at a mean distance of 13 meters below the Helicopter

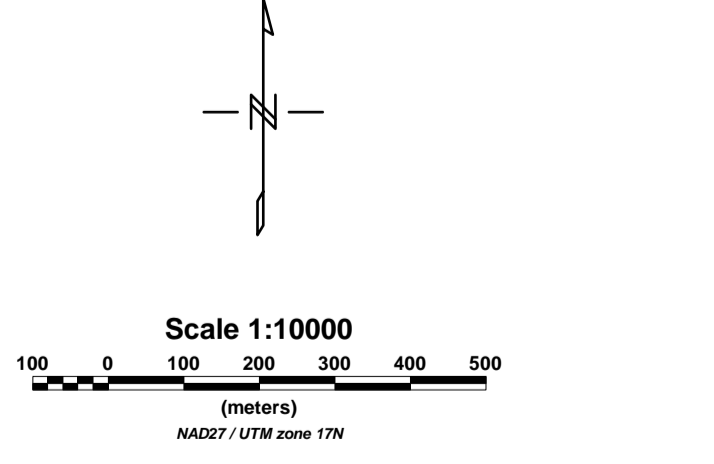
**INSTRUMENTS**  
 Geotech Time Domain Electromagnetic System (VTM)  
 Concentric P/T's Geometry  
 X-Coil Loop: Diameter 0.32 Meters, Base Frequency 30 Hz  
 Transmitter Loop: Diameter 26 Meters, Base Frequency 30 Hz  
 Dipole Moment: 354,690 mA  
 Transmitter Wave Form: Trapezoid, Pulse Width 7.21 ms  
 Geometrics High Sensitivity Cesium Magnetometer  
 Map Resolution: 0.02 m at 10 samples/sec

**MAP PROJECTION**  
 Datum: NAD 27  
 Projection: Universal Transverse Mercator  
 Central Meridian: 81°W (Zone 17N)  
 Central Scale Factor: 0.9996  
 False Easting/Northing: 500,000m/0m  
 Major Axis: 6378206.4  
 Eccentricity: 0.82271854219  
 NTS: 84105 & 84112



**TOPOGRAPHIC LEGEND:**

- Roads
- Trails
- Contours
- Rivers / Streams
- Lakes / Ponds
- Wetlands
- Mining Claims



The topographic data base was derived from 1:50,000 NRC (Natural Resources Canada) NTDB data. Background shading is derived from NASCA (NTDB) Shaded Relief Topographic Memory data. Inset data derived from Geocommunities 1:250,000 Canadian National Topographic database. Mining Claims are derived from the Ontario Ministry of Northern Development and Mines ([www.geocomm.com/www.geocomm.ca/0707/www.mdm.gov.on.ca](http://www.geocomm.com/www.geocomm.ca/0707/www.mdm.gov.on.ca))

**Wallbridge Mining Company Limited**  
 Ermatinger Property - South (B)  
 Sudbury, Ontario

**Geotech vTEM System**  
 Zentech dB/dt Profiles  
 Time Gates 0.126 to 4.042 ms

Flown and processed by Geotech Ltd.  
 245 Industrial Parkway North,  
 Aurora, Ontario, Canada L4G 4C4  
 www.geotech.ca

July 2011

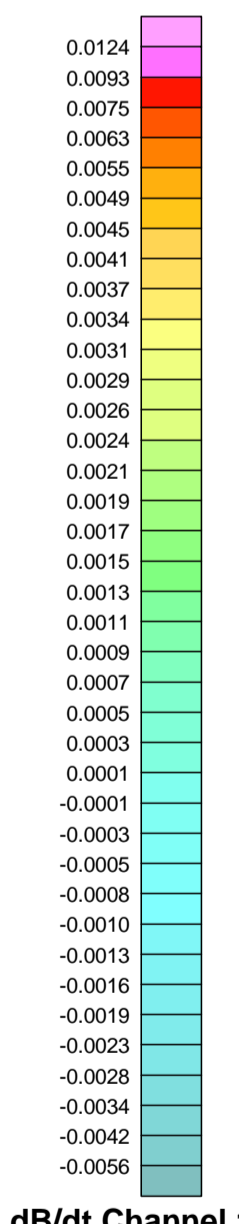
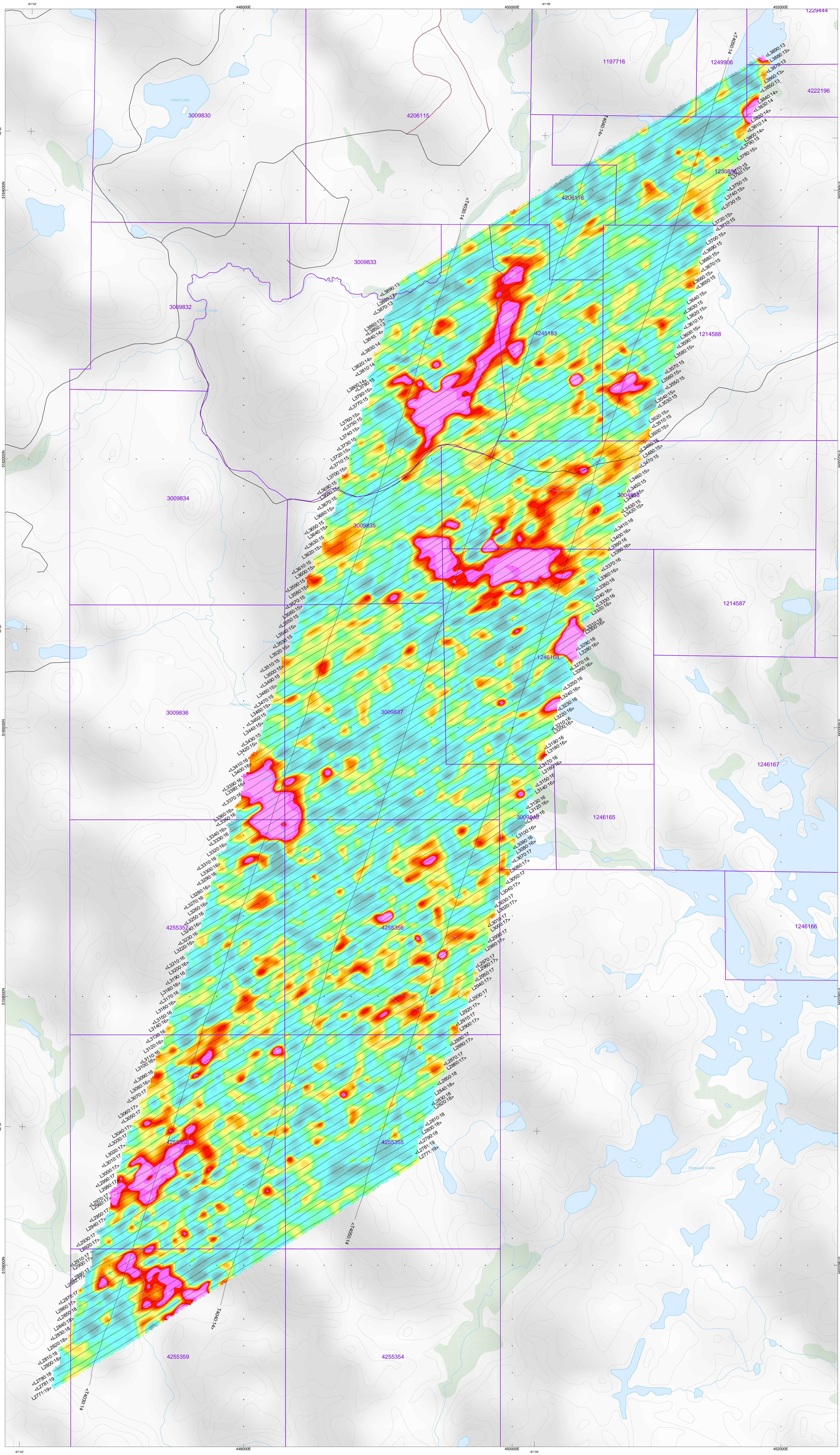
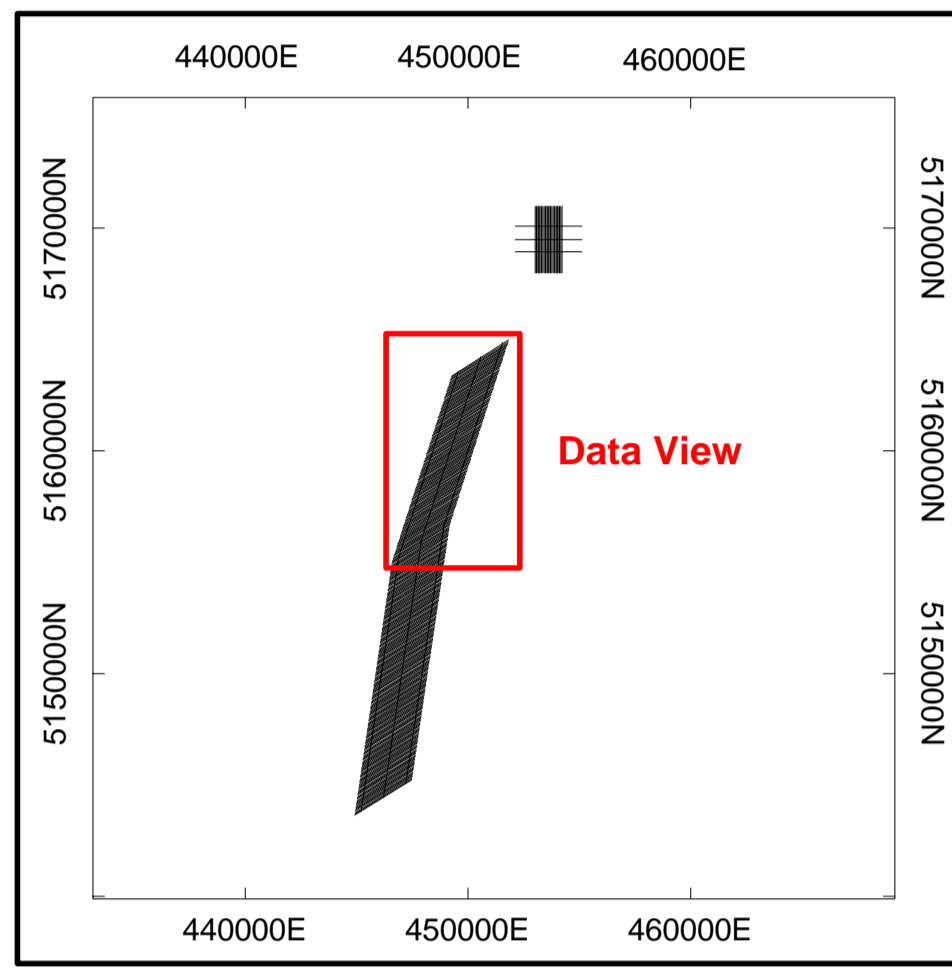




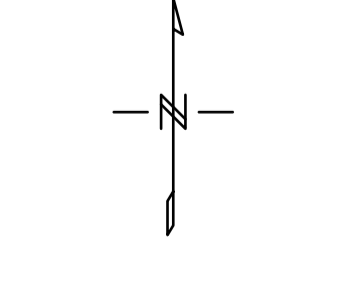
**SURVEY SPECIFICATIONS:**  
 Survey Date: May 4th to June 6th, 2011  
 Survey Base: Sudbury, Ontario  
 Aircraft: Aerospaciale A-Star 350 B3 (C-Geoc)  
 Nominal Survey Line Spacing: 50 Meters  
 Nominal Survey Line Direction: N 58° E / N 238° E  
 Nominal Tie Line Direction: N 87° E / N 183° E  
 Nominal Terrain Clearance: 83 Meters  
 EM Loop: Towed at a mean distance of 35 meters below the Helicopter  
 Magnetic Sensor: Towed at a mean distance of 13 meters below the Helicopter

**INSTRUMENTS**  
 Geotech Time Domain Electromagnetic System (VTEM)  
 Concentric P/T's Geometry  
 X-Coil Loop: Diameter 0.32 Meters, Base Frequency 30 Hz  
 Transmitter Loop: Diameter 26 Meters, Base Frequency 30 Hz  
 Dipole Moment: 354,660 mA  
 Transmitter Wave Form: Trapezoid, Pulse Width 7.21 ms  
 Geometrics High Sensitivity Cesium Magnetometer  
 Map Resolution: 0.02 m at 10 samples/sec

**MAP PROJECTION**  
 Datum: NAD 27  
 Projection: Universal Transverse Mercator  
 Central Meridian: 81°W (Zone 17N)  
 Central Scale Factor: 0.9996  
 False Easting/Northing: 500,000m/0m  
 Major Axis: 6378206.4  
 Eccentricity: 0.082271854219  
 MTS: 84105 & 84112



**TOPOGRAPHIC LEGEND:**  
 — Trails  
 — Roads  
 — Contours  
 — Rivers / Streams  
 — Lakes / Ponds  
 — Wetlands  
 — Mining Claims



Scale 1:10000  
 (meters)

The topographic data base was derived from 1:50,000 NRC (Natural Resources Canada) NTDB data. Background shading is derived from NASR (NASR) Shaded Relief Topographic Mission data. Inset data derived from Geocommunities 1:250,000 Canadian National Topographic database. Mining Claims are derived from the Ontario Ministry of Northern Development and Mines ([www.mdm.gov.on.ca](http://www.mdm.gov.on.ca))

**Wallbridge Mining Company Limited**  
 Ermatinger Property - South (B)  
 Sudbury, Ontario  
 Geotech VTEM System  
 Z-Channel dB/dt Channel 18  
 Time Gate 0.167 ms

Flown and processed by Geotech Ltd.  
 245 Industrial Parkway North,  
 Aurora, Ontario, Canada L4G 4C4  
 www.geotech.ca

July 2011



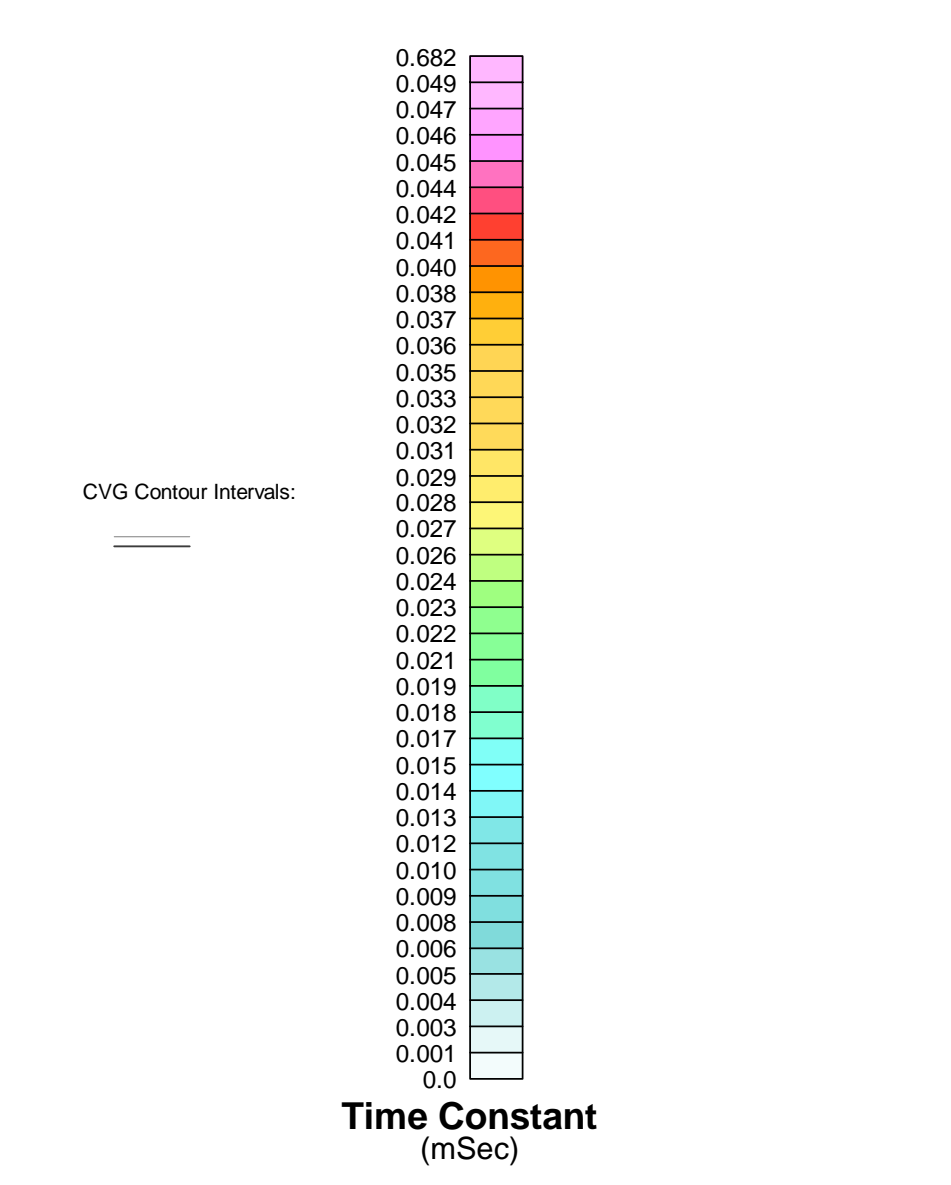
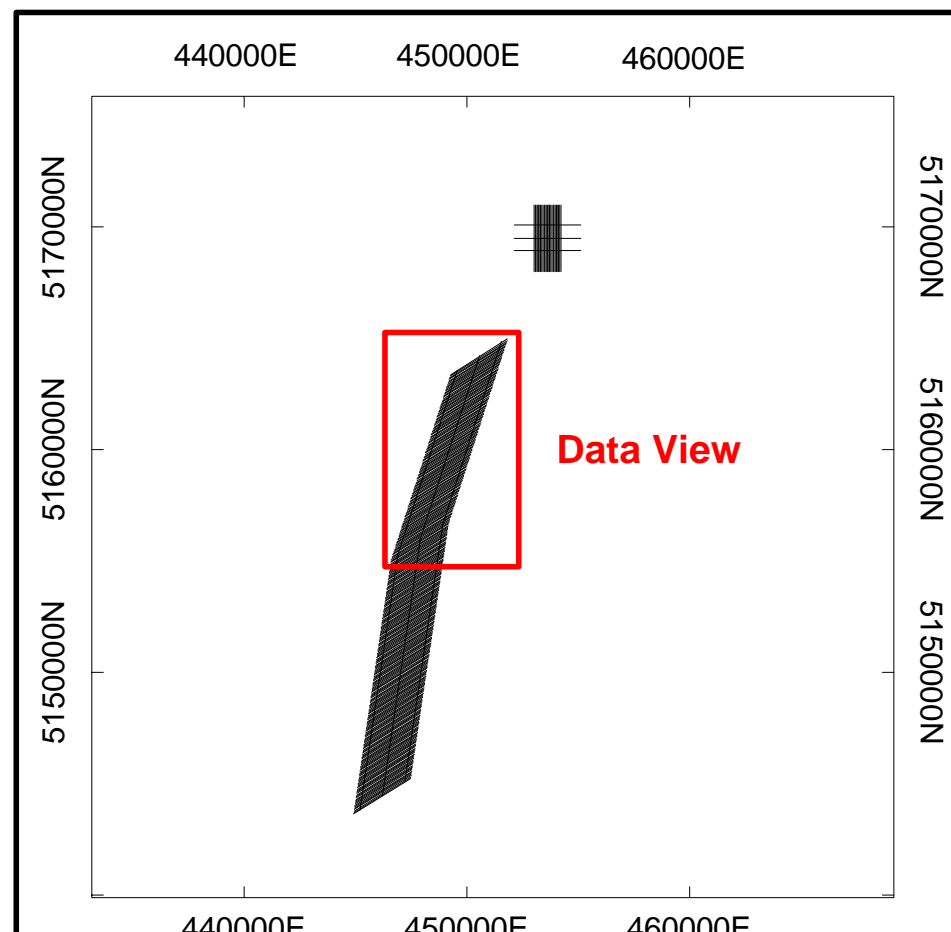


**Scale:** 1:150,000

**SURVEY SPECIFICATIONS:**  
 Survey Date: May 4th to June 6th, 2011  
 Survey Base: Sudbury, Ontario  
 Aircraft: Aerospaciale A-Star 350 B3 (C-GECC)  
 Nominal Survey Line Spacing: 50 Meters  
 Nominal Survey Line Direction: N 58° E / N 238° E  
 Nominal Tra Line Spacing: 500 Meters  
 Nominal Tra Line Direction: N 81° E / N 188° E  
 Nominal Terrain Clearance: 83 Meters  
 EM Loop: Towed at a mean distance of 35 meters below the Helicopter  
 Magnetic Sensor: Towed at a mean distance of 13 meters below the Helicopter

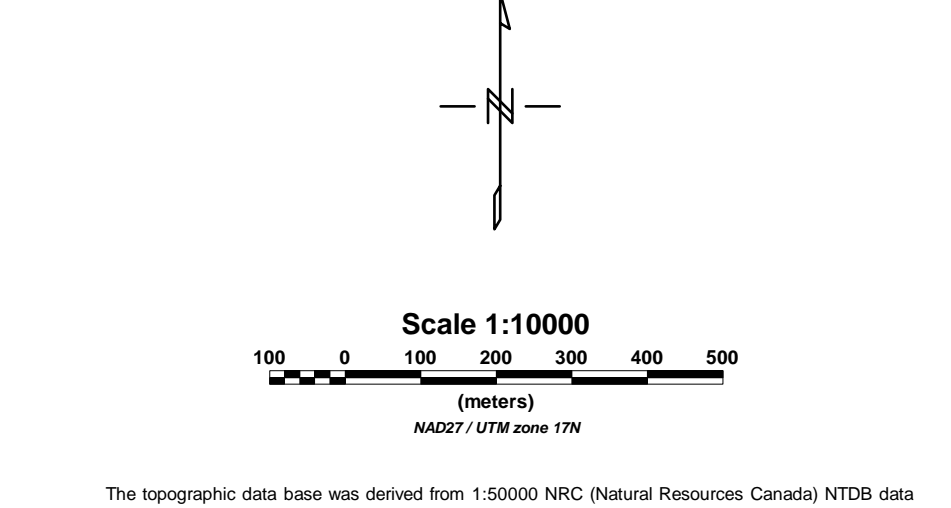
**INSTRUMENTS**  
 Geotech Time Domain Electromagnetic System (VTM)  
 Concentric Rx/Tx Geometry  
 X-Coil Loop: Diameter 0.32 Meters, Base Frequency 30 Hz  
 Transmitter Loop: Diameter 26 Meters, Base Frequency 30 Hz  
 Dipole Moment: 354,666 nA  
 Transmitter Wave Form: Trapezoid, Pulse Width 7.21 ms  
 Geometrics High Sensitivity Cesium Magnetometer  
 Magnetic Sensor: Towed at a mean distance of 13 meters below the Helicopter

**MAP PROJECTION**  
 Datum: NAD 27  
 Projection: Universal Transverse Mercator  
 Central Meridian: 81°W (Zone 17N)  
 Central Scale Factor: 0.9996  
 False Easting/Northing: 500,000m/0m  
 Major Axis: 6378206.4  
 Eccentricity: 0.082271854219  
 NTS: 04165 & 04112



**TOPOGRAPHIC LEGEND:**

- Trails
- Roads
- Contours
- Rivers / Streams
- Lakes / Ponds
- Wetlands
- Mining Claims



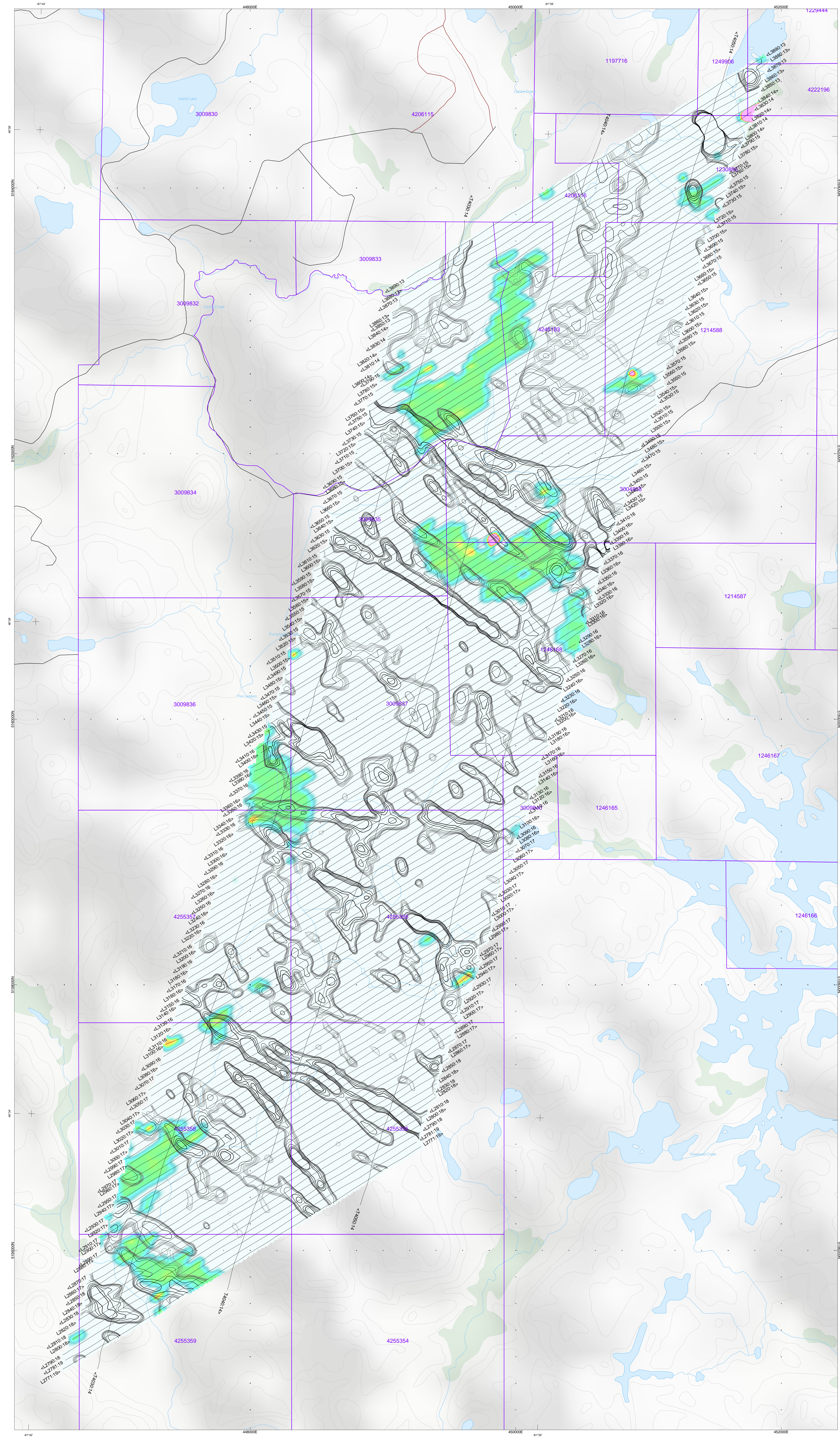
The topographic data base was derived from 1:50,000 NRC (Natural Resources Canada) NTDB data. Background shading is derived from NASA SRTM (Shuttle Radar Topography Mission) data. Real data derived from Geomatics Canada National Topographic Database. Mining Claims are derived from the Ontario Ministry of Northern Development and Mines (<http://www.geomatics.ca/ftp/www/mnm.gov.on.ca/>)

**Wallbridge Mining Company Limited**  
 Ermatanger Property - South (B)  
 Sudbury, Ontario

Geotech VTEM System  
 dB/dt Calculated Time Constant (Tau)  
 with contours of Topography and the  
 Calculated Vertical Derivative of TMI

Flown and processed by Geotech Ltd.  
 245 Industrial Parkway North,  
 Aurora, Ontario, Canada L4G 4C4  
 www.geotech.ca

July 2011



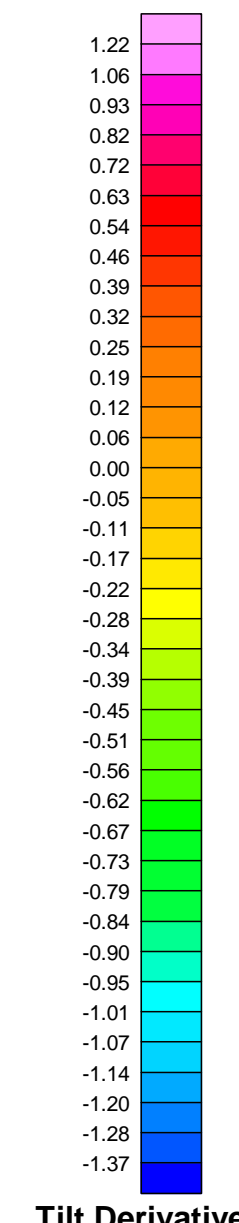
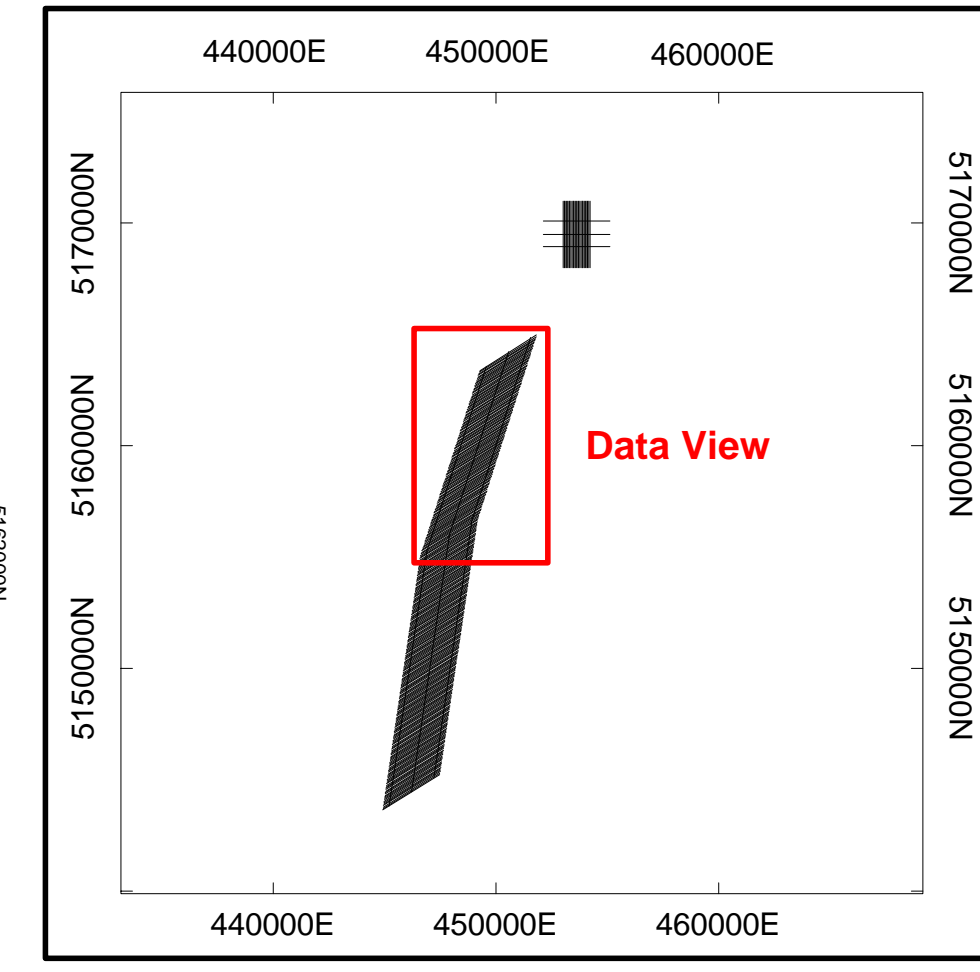




**SURVEY SPECIFICATIONS:**  
 Survey Date: May 4th to June 6th, 2011  
 Survey Base: Sudbury, Ontario  
 Aircraft: Aeroquest A-Star 350 B3 (C-GECC)  
 Nominal Survey Line Spacing: 50 Meters  
 Nominal Survey Line Direction: N 58° E / N 238° E  
 Nominal Tie Line Spacing: 300 Meters  
 Nominal Tie Line Direction: N 8° E / N 188° E  
 Nominal Terrain Clearance: 83 Meters  
 EM Loop: Towed at a mean distance of 25 meters below the Helicopter  
 Magnetic Sensor: Towed at a mean distance of 13 meters below the Helicopter

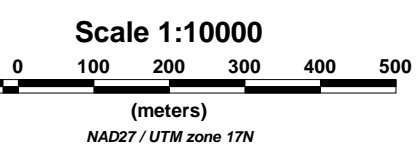
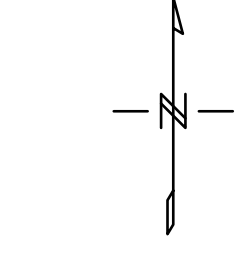
**INSTRUMENTS**  
 Geosoft Time Domain Electromagnetic System (VTEM)  
 Concentric Rx/Tx Geometry  
 X-Coil Loop: Diameter 0.32 Meters, Base Frequency 30 Hz  
 Transmitter Loop: Diameter 26 Meters, Base Frequency 30 Hz  
 Dipole Moment: 554,660 nA  
 Transmitter Wave Form: Trapezoidal, Pulse Width 7.21 ms.  
 Geometrics High Sensitivity Cesium Magnetometer  
 Mag Resolution: 0.02 nT at 10 samples/sec

**MAP PROJECTION**  
 Datum: NAD 27  
 Projection: Universal Transverse Mercator  
 Central Meridian: 81°W (Zone 17N)  
 Central Scale Factor: 0.9996  
 False Easting/Northing: 500,000m/0m  
 Major Axis: 6378206.4  
 Eccentricity: 0.082271854219  
 NTS: 04105 & 04112



**TOPOGRAPHIC LEGEND:**

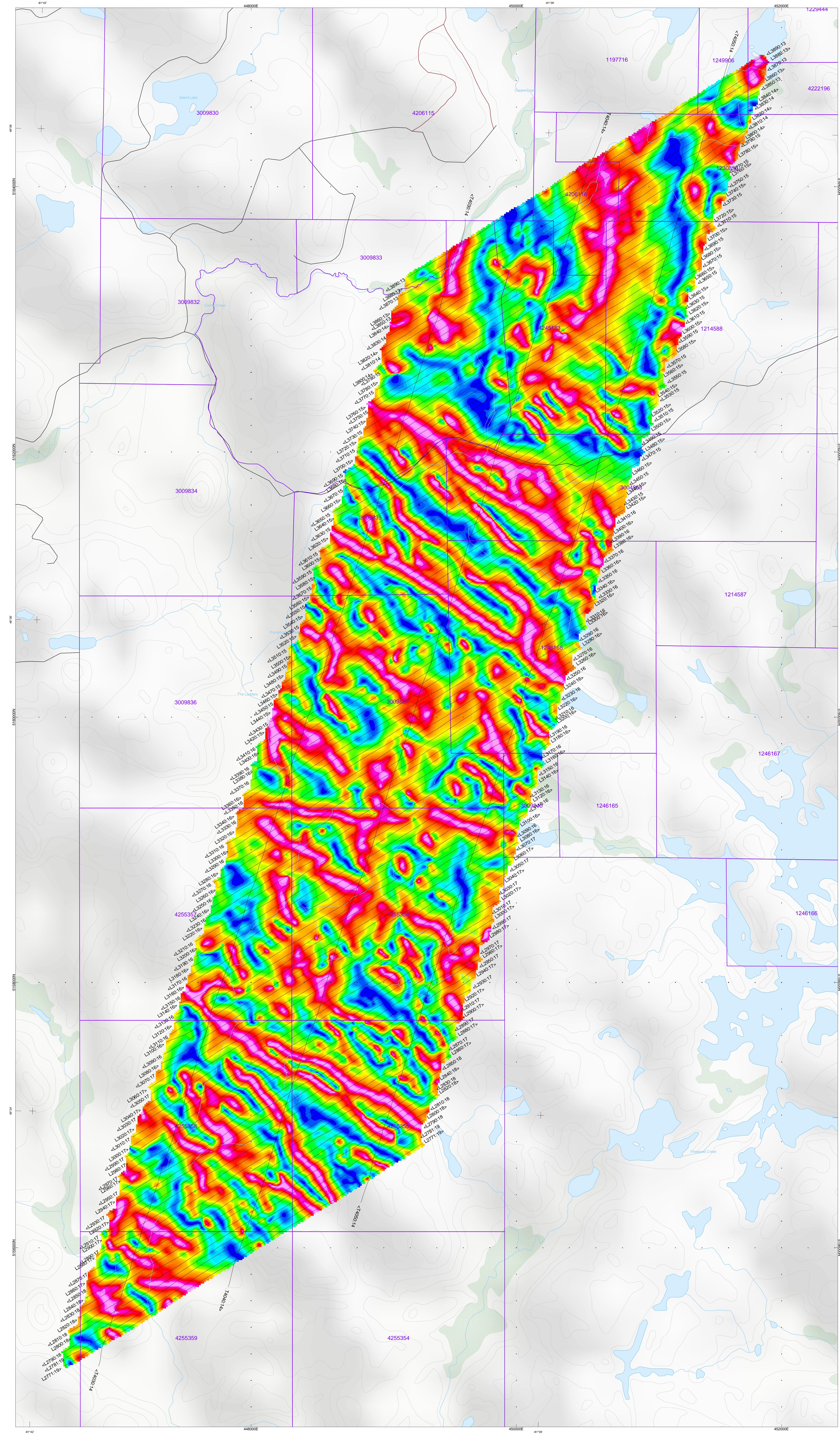
- Trails
- Roads
- Contours
- Rivers / Streams
- Lakes / Ponds
- Wetlands
- Mining Claims



The topographic data base was derived from 1:50,000 NRC (Natural Resources Canada) NTDB data. Background shading is derived from NASC (NRCan) Shuttle Radar Topographic Mission data. Inset data derived from Geocommunities 1:250,000 Canadian National Topographic database. Mining Claims are derived from the Ontario Ministry of Northern Development and Mines ([www.mdm.gov.on.ca](http://www.mdm.gov.on.ca))

**Wallbridge Mining Company Limited**  
 Ermatinger Property - South (B)  
 Sudbury, Ontario  
 Geotech VTEM System  
 Tilt Derivative of TMI

Flown and processed by Geotech Ltd.  
 245 Industrial Parkway North,  
 Aurora, Ontario, Canada L4G 4C4  
 www.geotech.ca  
 July 2011



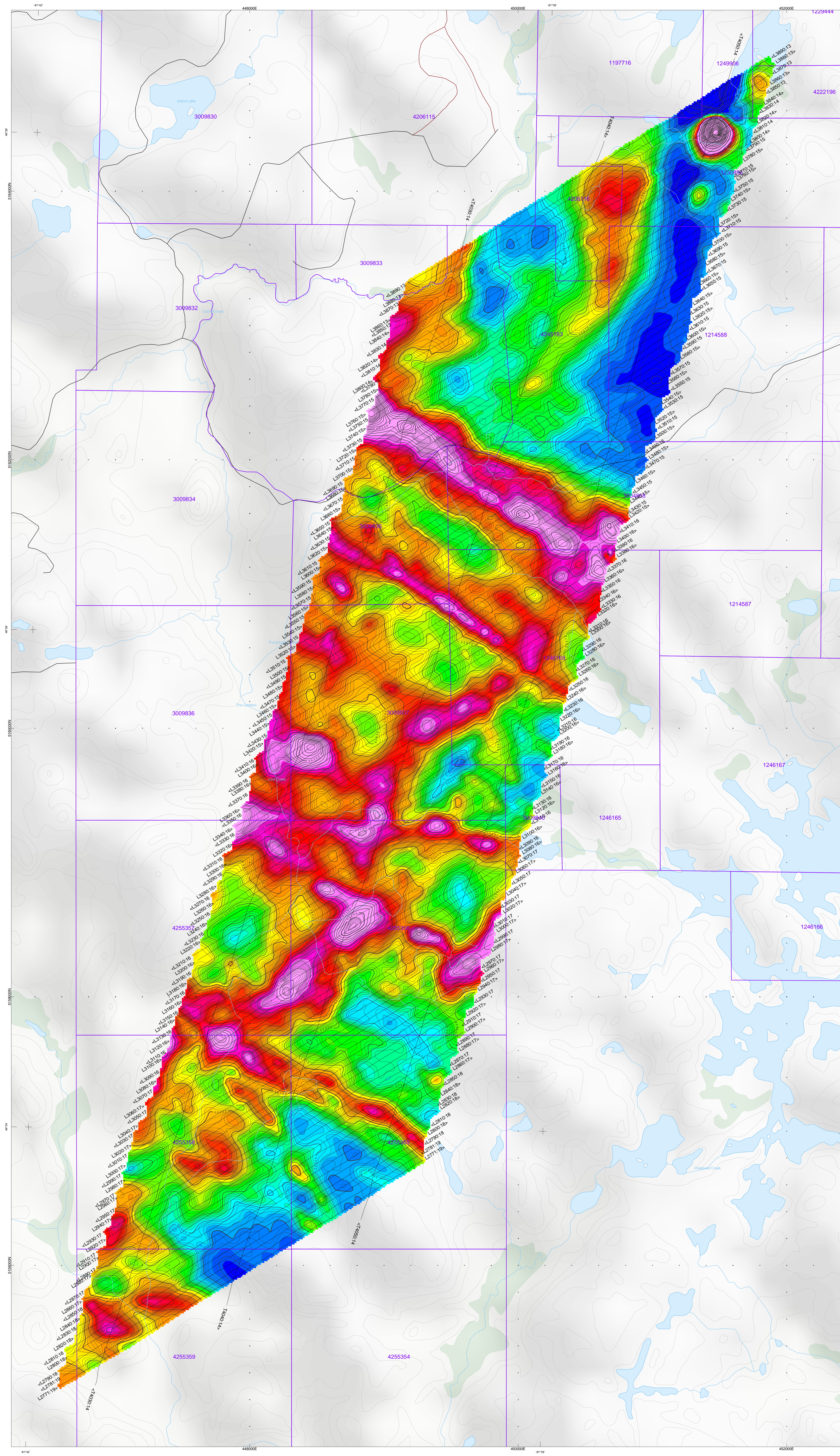
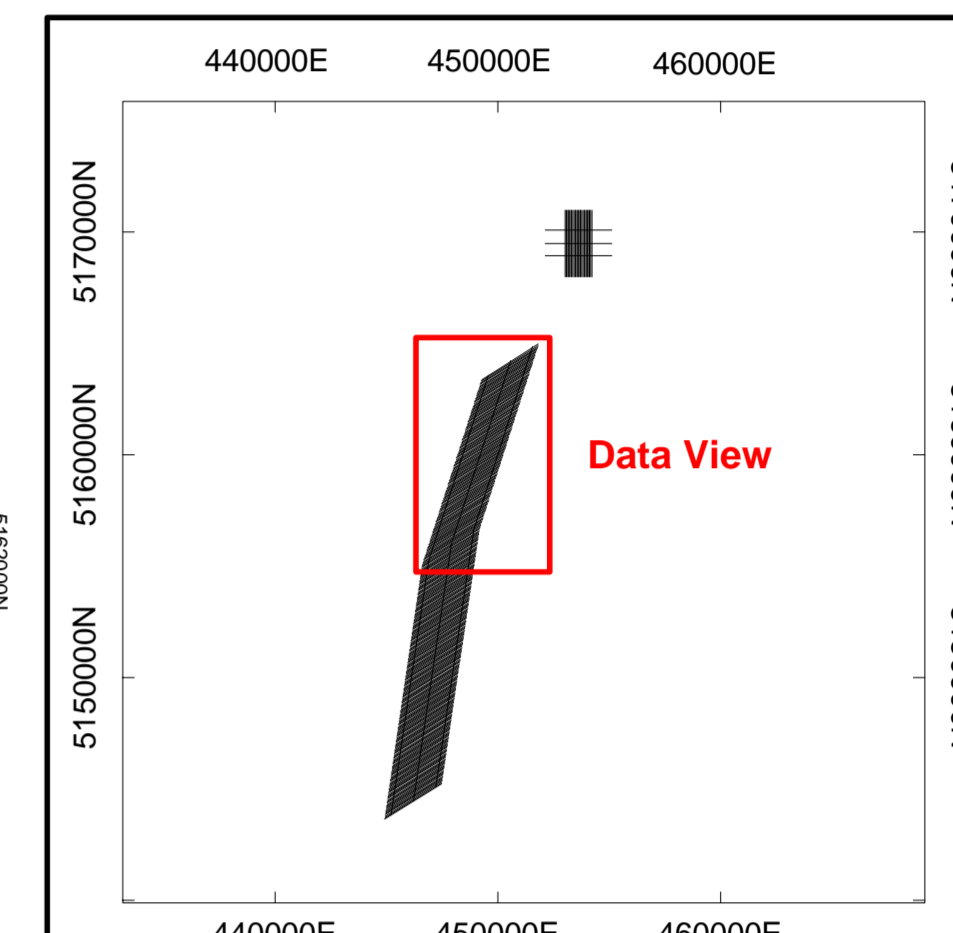




**SURVEY SPECIFICATIONS:**  
 Survey Date: May 4th to June 6th, 2011  
 Survey Base: Sudbury, Ontario  
 Aircraft: Aerospaciale A-Star 350 B3 (C-Geoc)  
 Nominal Survey Line Spacing: 50 Meters  
 Nominal Survey Line Direction: N 58° E / N 238° E  
 Nominal Tie Line Spacing: 500 Meters  
 Nominal Tie Line Direction: N 81° E / N 189° E  
 Nominal Terrain Clearance: 83 Meters  
 EM Loop: Towed at a mean distance of 35 meters below the Helicopter  
 Magnetic Sensor: Towed at a mean distance of 13 meters below the Helicopter

**INSTRUMENTS**  
 Geotech Time Domain Electromagnetic System (VTM)  
 Concentric Pairs Geometry  
 X-Coil Loop: Diameter 0.32 Meters, Base Frequency 30 Hz  
 Transmitter Loop: Diameter 26 Meters, Base Frequency 30 Hz  
 Dipole Moment: 354.666 m³  
 Transmitter Wave Form: Trapezoid, Pulse Width 7.21 ms  
 Geometrics High Sensitivity Cesium Magnetometer  
 Map Resolution: 0.02 m at 18 samples/sec

**MAP PROJECTION**  
 Datum: NAD 83  
 Projection: Universal Transverse Mercator  
 Central Meridian: 81° W (Zone 17N)  
 Central Scale Factor: 0.9998  
 False Easting/Northing: 500000m/0m  
 Major Axis: 6378296.4  
 Eccentricity: 0.082271854219  
 NTS: 04105 & 04112



**TMI Contour Intervals:**  
 5 nT  
 25 nT  
 125 nT

**TMI (nT)**

58775
58750
58725
58700
58675
58650
58625
58600
58575
58550
58525
58500
58475
58450
58425
58400
58375
58350
58325
58300
58275
58250
58225
58200
58175
58150
58125
58100
58075
58050
58025
58000
57975
57950
57925
57900
57875
57850
57825
57800
57775
57750
57725
57700
57675
57650
57625
57600
57575
57550
57525
57500
57475
57450
57425
57400
57375
57350
57325
57300
57275
57250
57225
57200
57175
57150
57125
57100
57075
57050
57025
57000

**TOPOGRAPHIC LEGEND:**  
 Trails  
 Roads  
 Contours  
 Rivers / Streams  
 Lakes / Ponds  
 Wetlands  
 Mining Claims

**Scale 1:10000**  
 100 0 100 200 300 400 500  
 METERS  
 NAD83 / UTM zone 17N

The topographic data base was derived from 1:50,000 NRC (Natural Resources Canada) NTDB data. Background shading is derived from NASA SRTM (Shuttle Radar Topography Mission) data. Water data is derived from GeoNames (© 2003) Canada National Topographic database. Mining Claims are derived from the Ontario Ministry of Northern Development and Mines ([www.geonames.com](http://www.geonames.com)) (<http://www.mdm.gov.on.ca>)

Wallbridge Mining Company Limited  
 Ermatinger Property - South (B)  
 Sudbury, Ontario  
 Geotech VTEM System  
 Total Magnetic Intensity (TMI)  
 Flown and processed by Geotech Ltd.  
 245 Industrial Parkway North,  
 Aurora, Ontario, Canada L4G 4C4  
 www.geotech.ca  
 July 2011

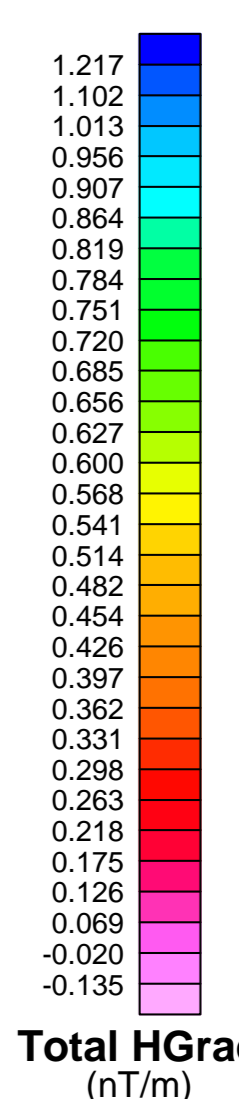
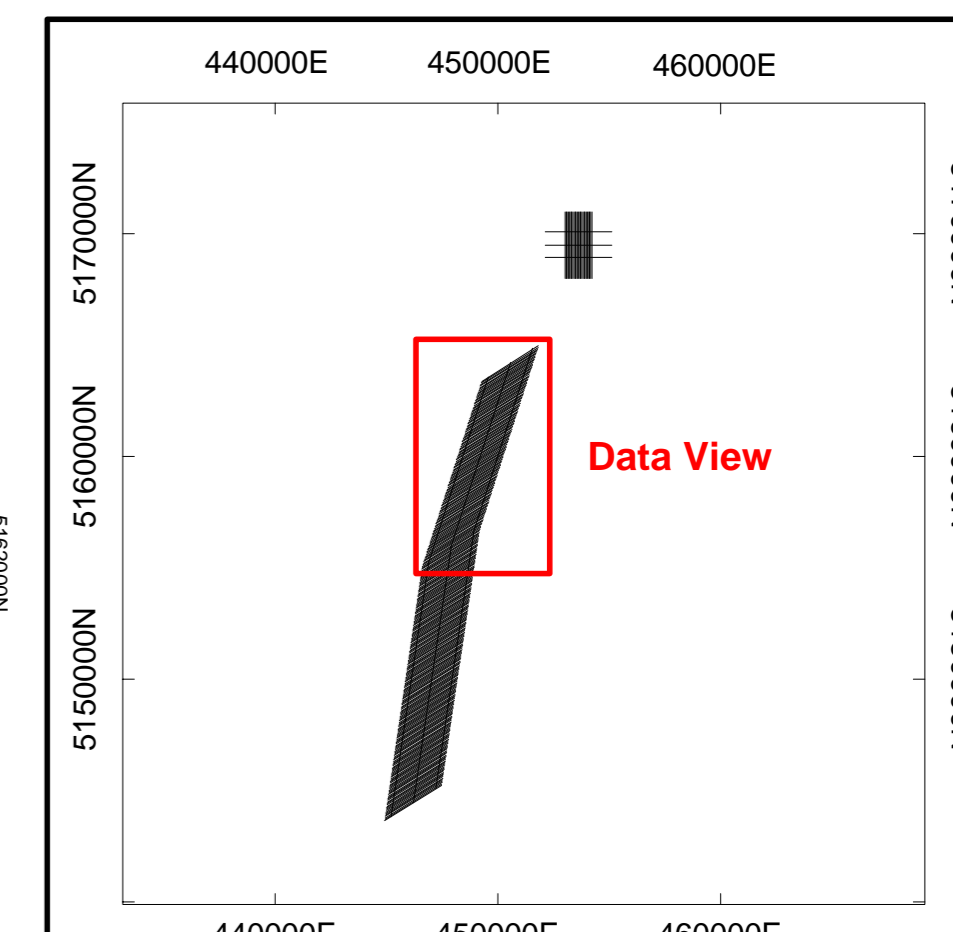




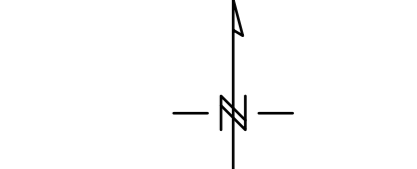
**SURVEY SPECIFICATIONS:**  
 Survey Date: May 4th to June 6th, 2011  
 Survey Base: Sudbury, Ontario  
 Aircraft: Aerospaciale A-Star 350 B3 (C-GEOC)  
 Nominal Survey Line Spacing: 50 Meters  
 Nominal Survey Line Direction: N 58° E / N 238° E  
 Nominal Tie Line Direction: N 87° E / N 103° E  
 Nominal Terrain Clearance: 83 Meters  
 EM Loop: Towed at a mean distance of 35 meters below the Helicopter  
 Magnetic Sensor: Towed at a mean distance of 15 meters below the Helicopter

**INSTRUMENTS:**  
 Geotech Time Domain Electromagnetic System (VTM)  
 Concentric PRT's Geometry  
 X-Coil Loop: Diameter 0.32 Meters, Base Frequency 30 Hz  
 Transmitter Loop: Diameter 26 Meters, Base Frequency 30 Hz  
 Dipole Moment: 354.660 nA  
 Transmitter Wave Form: Trapezoidal, Pulse Width 7.21 ms.  
 Geometrics High Sensitivity Cesium Magnetometer  
 Map Resolution: 0.02 nT at 10 samples/sec

**MAP PROJECTION:**  
 Datum: NAD 27  
 Projection: Universal Transverse Mercator  
 Central Meridian: 81°W (Zone 17N)  
 Central Scale Factor: 0.9996  
 False Easting/Northing: 500000m/0m  
 Major Axis: 6378206.4  
 Eccentricity: 0.02271854219  
 NTS: 04165 & 04112



**TOPOGRAPHIC LEGEND:**  
 Trails  
 Roads  
 Contours  
 Rivers / Streams  
 Lakes / Ponds  
 Wetlands  
 Mining Claims



Scale 1:10000  
 0 100 200 300 400 500 meters

The topographic data base was derived from 1:50000 NRC (Natural Resources Canada) NTDB data. Background shading is derived from NARS (NTDB) (Scale Factor Topographic Mission) data. Inset data derived from Geocommunities 1:250,000 Canadian National Topographic database. Mining Claims are derived from the Ontario Ministry of Northern Development and Mines ([www.geocomm.com](http://www.geocomm.com)) (<http://www.mdm.gov.on.ca>)

**Wallbridge Mining Company Limited**  
 Ermatinger Property - South (B)  
 Sudbury, Ontario

**Geotech VTEM System**  
 Total Magnetic Gradient  
 of TMI

Flown and processed by Geotech Ltd.  
 245 Industrial Parkway North,  
 Aurora, Ontario, Canada L4G 4C4  
[www.geotech.ca](http://www.geotech.ca)

July 2011