

EXSICS EXPLORATION LTD.
 P.O. Box 1880, P4N-7X1
 Suite 13, Hollinger Bldg, Timmins Ont.
 Telephone: 705-287-4151, 287-2424

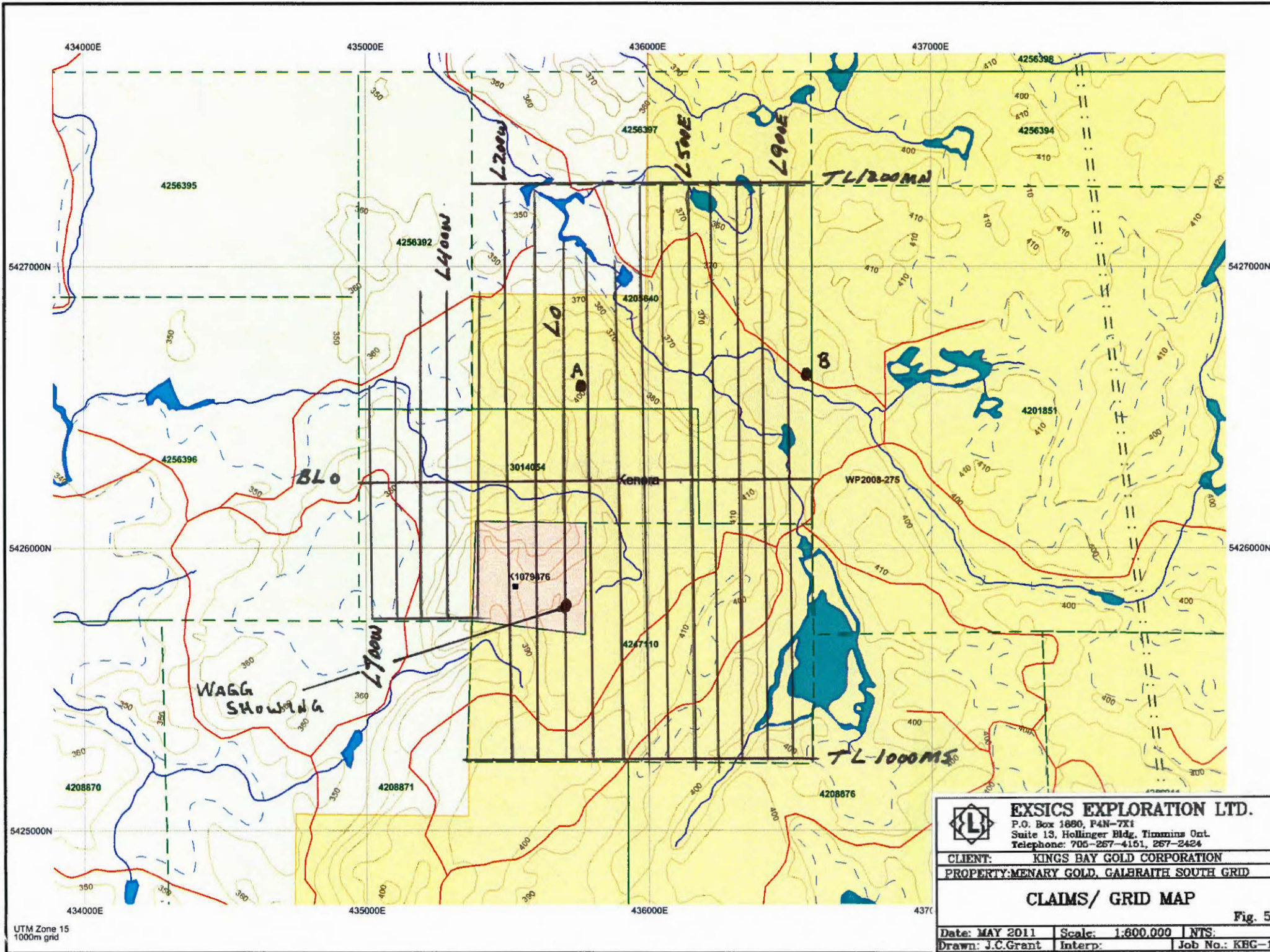
CLIENT: **KINGS BAY GOLD CORPORATION**
 PROPERTY: **MENARY GOLD, GALBRAITH NORTH/SOUTH**

CLAIM BLOCK/GRID MAP

Date: MAY 2011 | Scale: | NTS:
 Drawn: J.C.Grant | Interp: | Job No.: KGB-1

UTM Zone 18
 5000m grid

Fig. 4



UTM Zone 15
1000m grid



EXSICS EXPLORATION LTD.

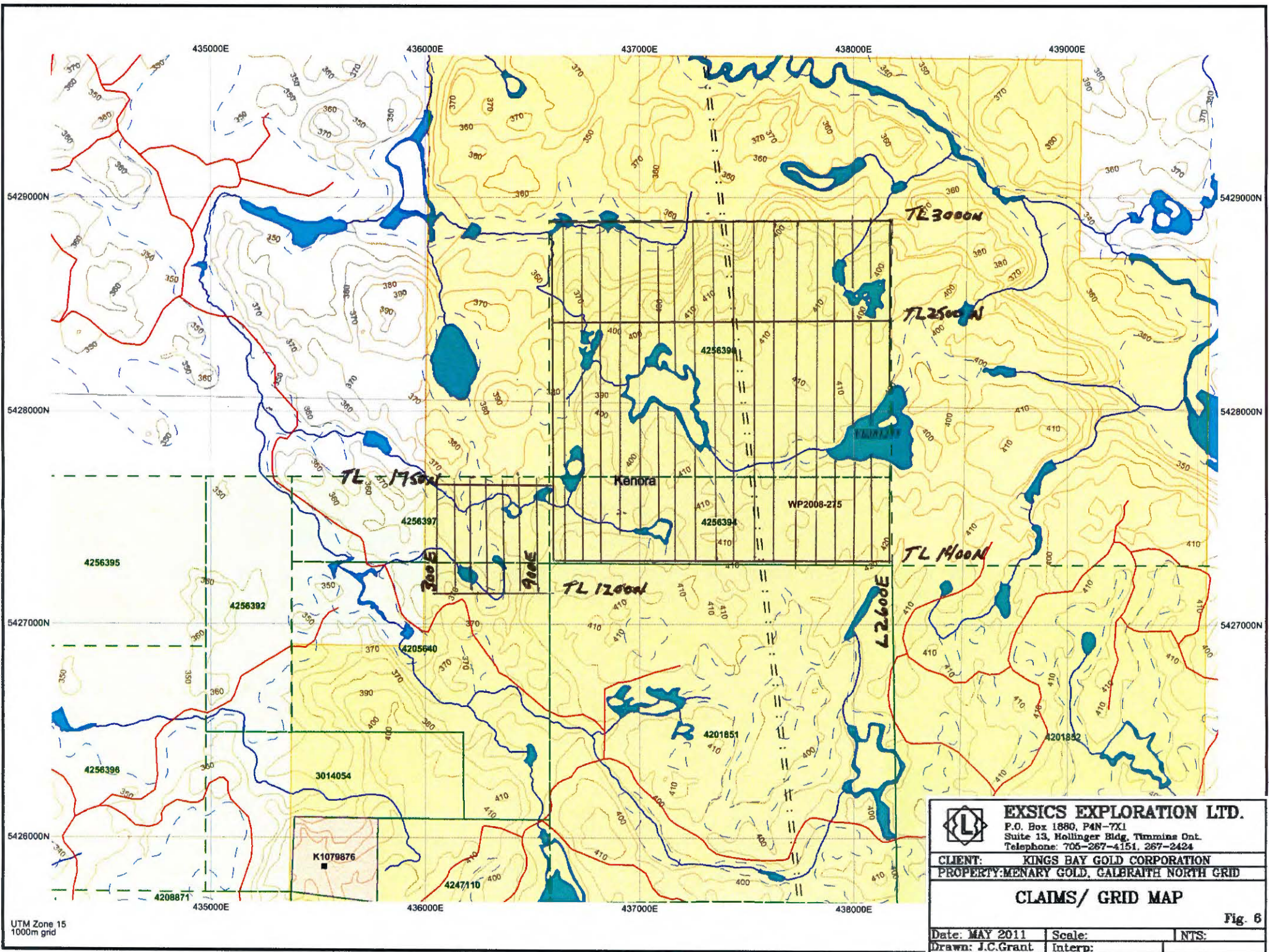
P.O. Box 1880, P4N-7X1
Suite 13, Hollinger Bldg, Timmins Ont.
Telephone: 705-267-4151, 267-2424

CLIENT: **KINGS BAY GOLD CORPORATION**
PROPERTY: **MENARY GOLD, GALBRAITH SOUTH GRID**

CLAIMS/ GRID MAP

Date: **MAY 2011** | Scale: **1:800,000** | NTS:
Drawn: **J.C.Grant** | Interp: | Job No.: **KBG-1**

Fig. 5



UTM Zone 15
1000m grid


 EXSICS EXPLORATION LTD. P.O. Box 1880, P4N-7X1 Suite 13, Hollinger Bldg, Timmins Ont. Telephone: 705-267-4151, 267-2424		
CLAIMS/ GRID MAP		
Date: MAY 2011	Scale:	NTS:
Drawn: J.C. Grant	Interp:	

Fig. 6