



Madgate Exploration  
consulting corp.  
(claim #4256195)

TREE LINED LAKE PROPERTY  
2012  
VLF SURVEY

36+00E 340° AZ  
LINES: \$ 100m LINE  
37+00E SPACING

Fieldwork By: B. Bennett T. Cox  
Plot By: T. Cox

SCALE 1:5000  
-100 -50 0 100  
Meters

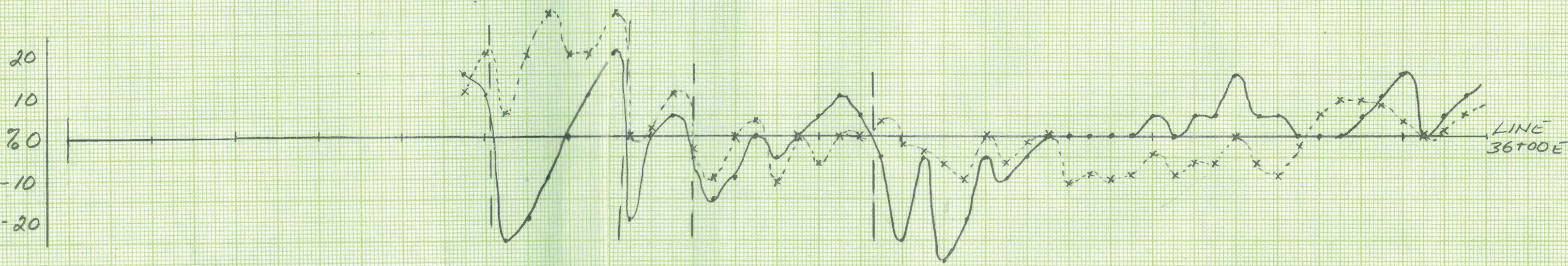
EM 16

Freq. Washington NLK @ 24.8 kHz  
25m STA.

DIP ANGLE } as a % + or -  
QUADRATURE }

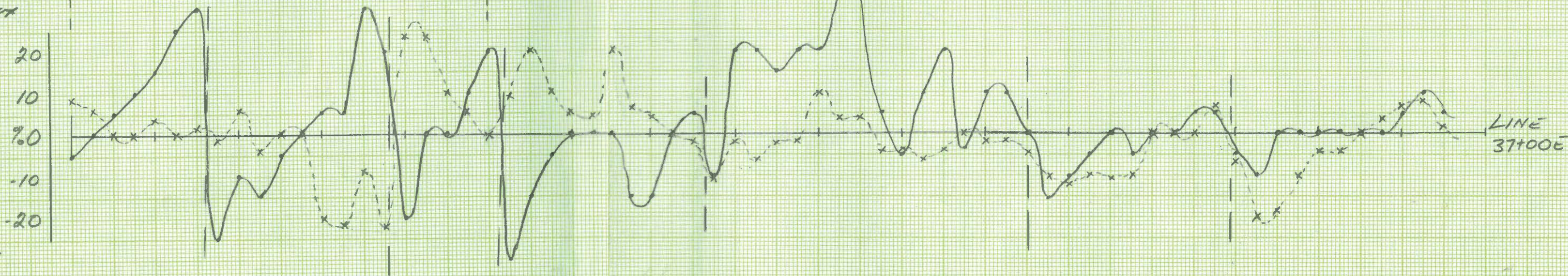
CONDUCTOR CROSSOVER LOCATION

12+00S 11+00S 10+00S 9+00S 8+00S 7+00S 6+00S 5+00S 4+00S 3+00S 2+00S 1+00S 20+00 11+00N 2+00N 3+00N 4+00N 5+00N




Readings Facing North  
SOUTH NORTH  
Profile

Little Main NAAC @ 24.0 kHz



LINE 37+00E

  
 Gladgate Explorations  
 consulting corporation  
 (claim # 4256195)  
 TREE LINE LAKE PROPERTY  
 2012

VLF SURVEY

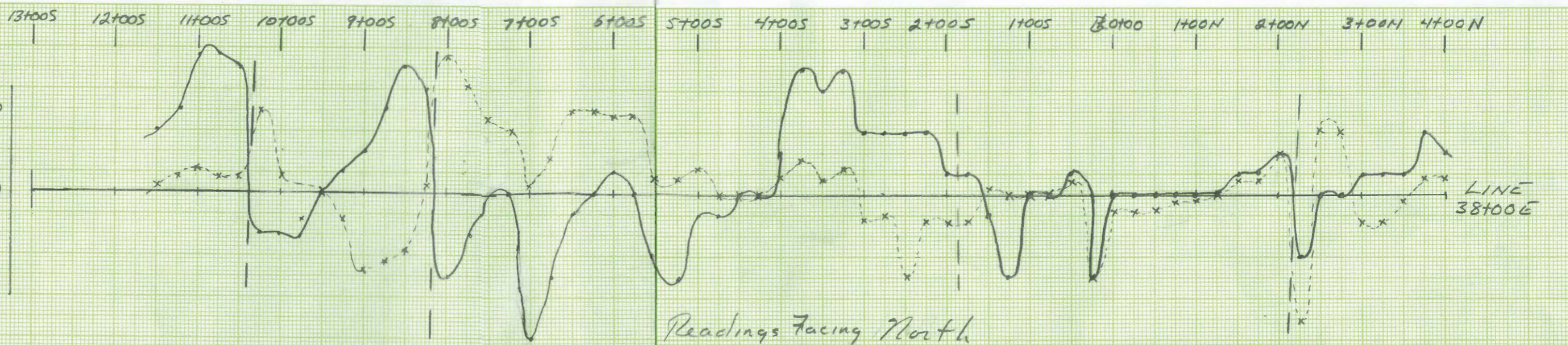
38+00E 340°AZ  
 LINES: 100m LINE  
 39+00E SPACING

Field Work By: B. Bennett & T. Cox  
 Plot By: T. Cox

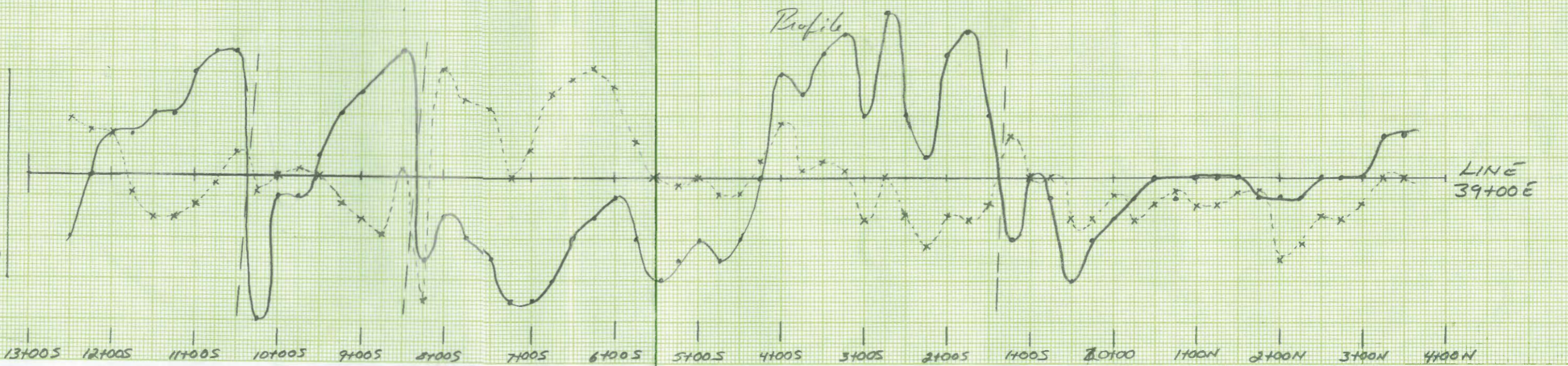
SCALE 1:5000  
 -100 -50 0 100  
 Meters

EM 16  
 Freq. Cuttler NAA @ 24.0 kHz 25m STR. 10  
 DIP ANGLE } as a % + a -  
 QUADRATURE }

CONDUCTOR 'CROSS OVER' LOCATION



← SOUTH NORTH →



*Hudgate Exploration  
consulting corporation*

(claim #4256195)

TREELINED LAKE PROPERTY  
2012

VLF SURVEY

LINES: 40+00E 340° AZ  
41+00E 100m LINE SPACING

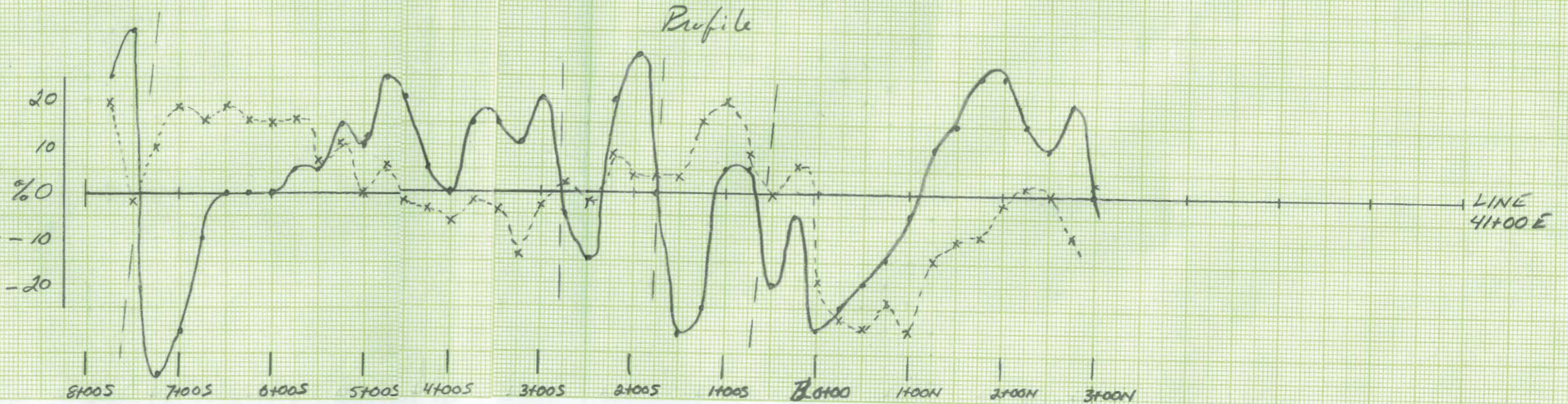
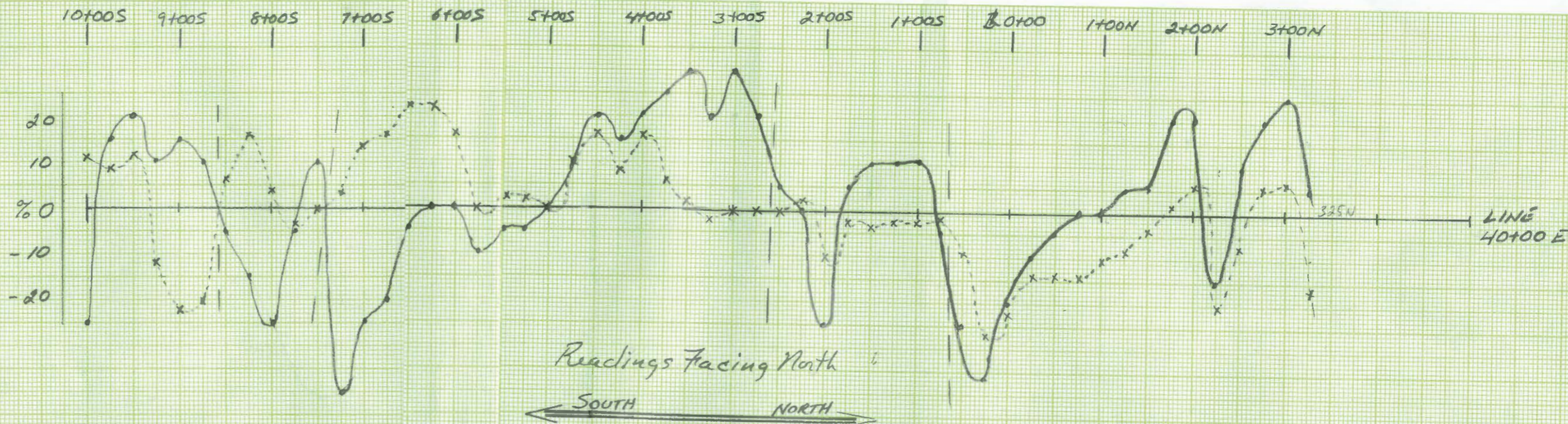
Field Work By: B. Penna + T. Cox


Plot By: T. Cox  
SCALE 1:5000  
-100 -50 0 100  
meters

EM 16  
Freq. Cuttler NAA @ 24.0 kHz, 25m STA.

DIP ANGLE } as a % + or -  
QUADRATURE }

CONDUCTOR, 'CROSS OVER' LOCATION



  
**Hadgate Exploration**  
 consulting corporation  
 (claim #4256195)  
**TREELINED LAKE PROPERTY**  
**2012**  
**VLF SURVEY**

LINES: 42+00E      340° AZ  
          43+00E      100m LINE  
    SPACING

Field work By: B. Penner & T. Cox  
 Map Plot: T. Cox

SCALE 1:5000  
 -100 -50 0 100  
 meters  
 EM 16

Freq. Cuttler NAA @ 24.0 kHz, 25m STA.  
 ~ DIP ANGLE } as a % + or -  
 x QUADRATURE }  
 / CONDUCTOR 'CROSSOVER' LOCATION

