

Madgate Exploration
consulting corporation
(claim 4256195)

TREELINED LAKE PROPERTY
2012




VLF SURVEY

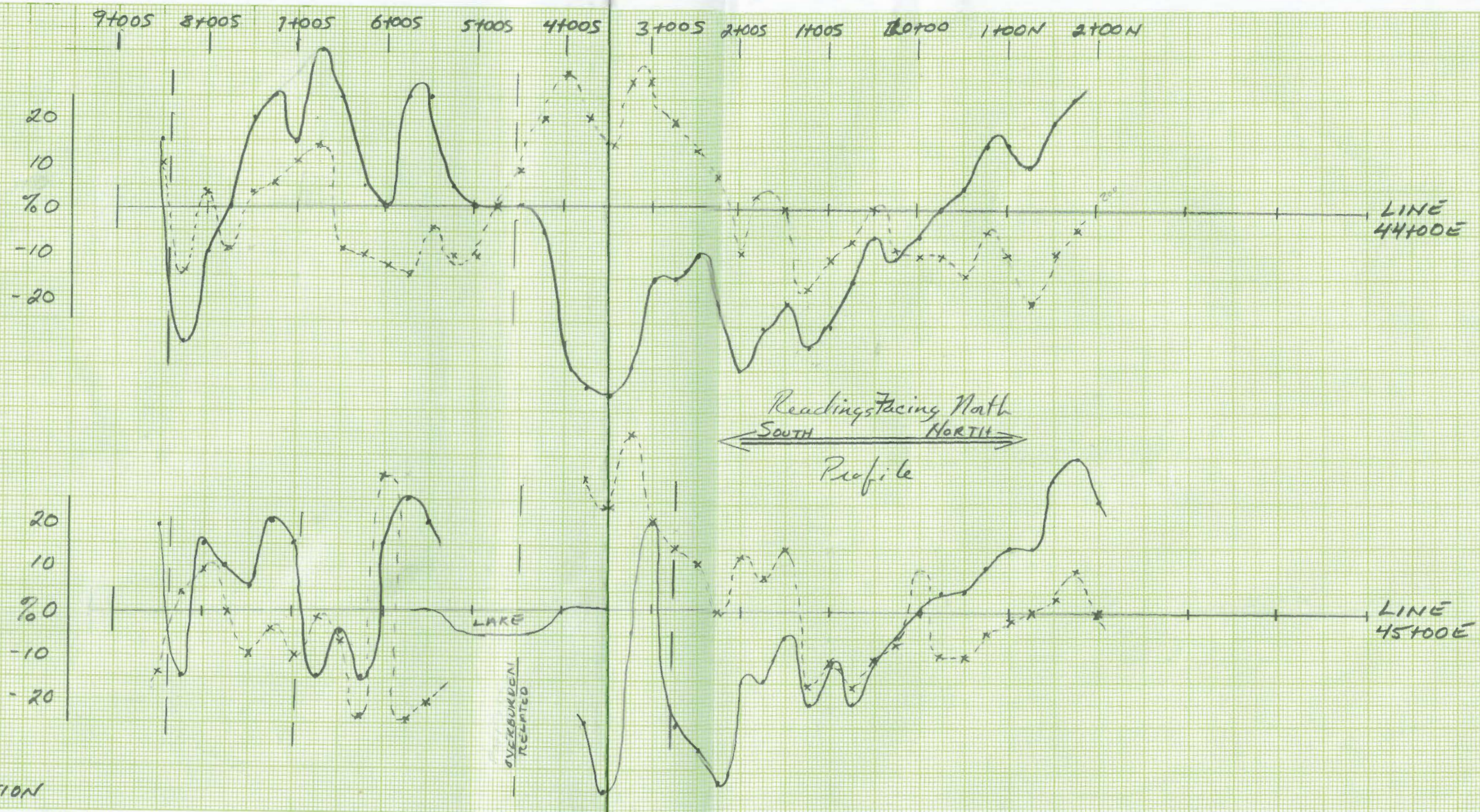
LINES: 44400E 340° AZ
45400E 100m LINE SPACING

Field Work By: B. Penner & T. Cox
Plat By: T. Cox

SCALE: 1:5000
-100 -50 0 100
Meters

EM 16
Freq. Cutler NAA @ 240kHz, 25m STA.

-  DIP ANGLE
-  QUADRATURE
-  CONDUCTOR 'CROSS OVER' LOCATION



Hadgale Exploration
 Consulting Corporation
 (Claim # 4256195)

TREE LINE LAKE PROPERTY
 2012

VLF SURVEY

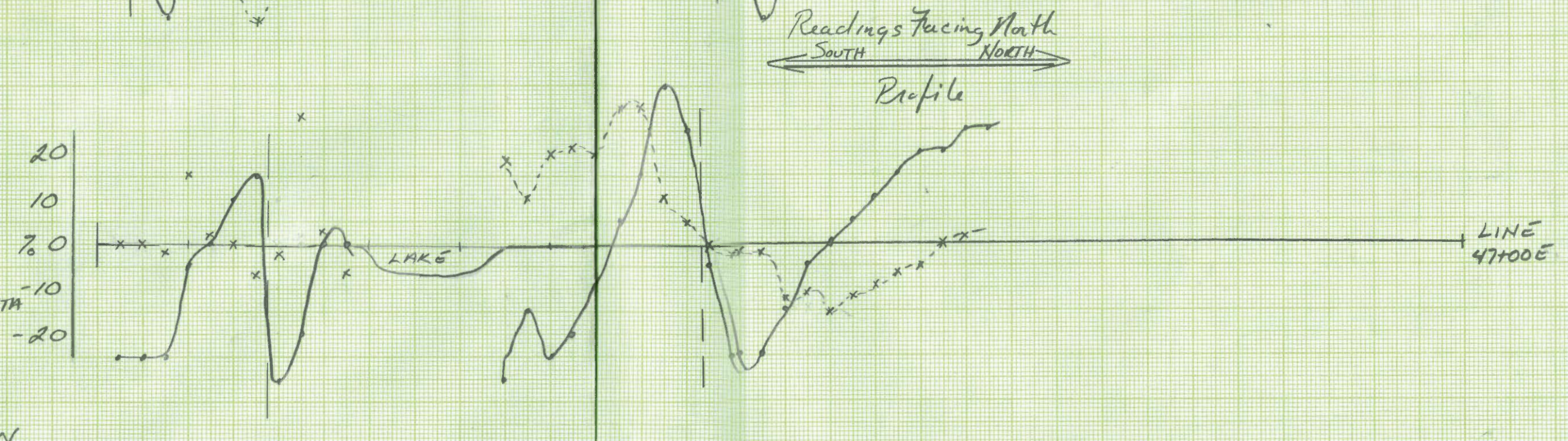
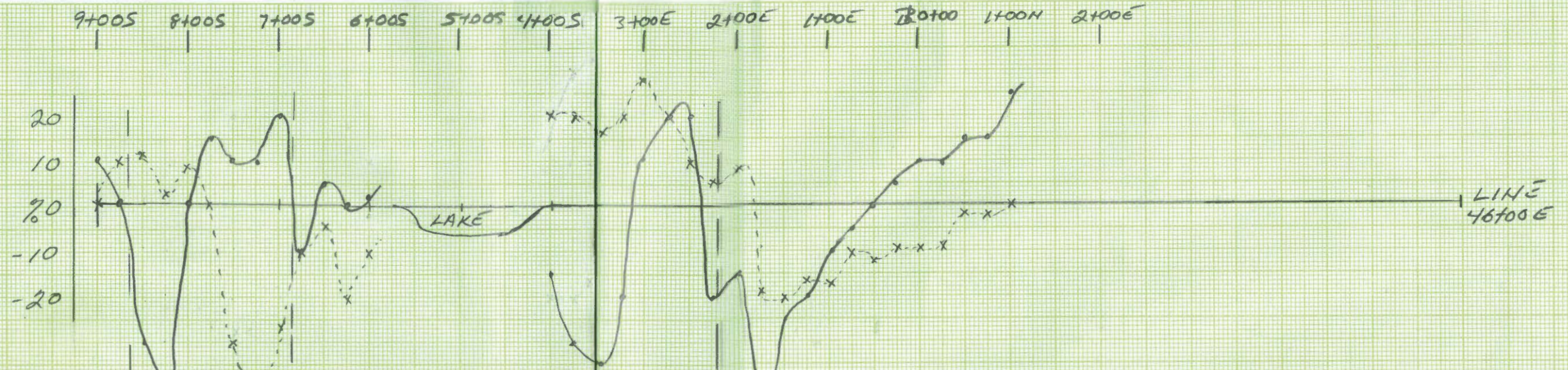
LINES: 46100E 340° AZ
 47100E 100m LINE
 SPACING

Field Work By: B. Penner & T. Cox
 Plot By: T. Cox

SCALE 1:5000
 -100 -50 0 100
 Meters

EM 16
 Freq. Cutler NAA @ 24.0 kHz, 25m SW

- DIP ANGLE
- ✕✕ QUADRATURE
- - - CONDUCTOR CROSSOVER LOCATION





Hodgale Exploration
consulting corporation
(claim # 4256195)

TREELINED LAKE PROPERTY

2012

VLF SURVEY

48100E 340° AZ
LINES: 3 100m LINE
49100E SPACING

Field Work By: B. Renner & T. Cox
Plot By: T. Cox

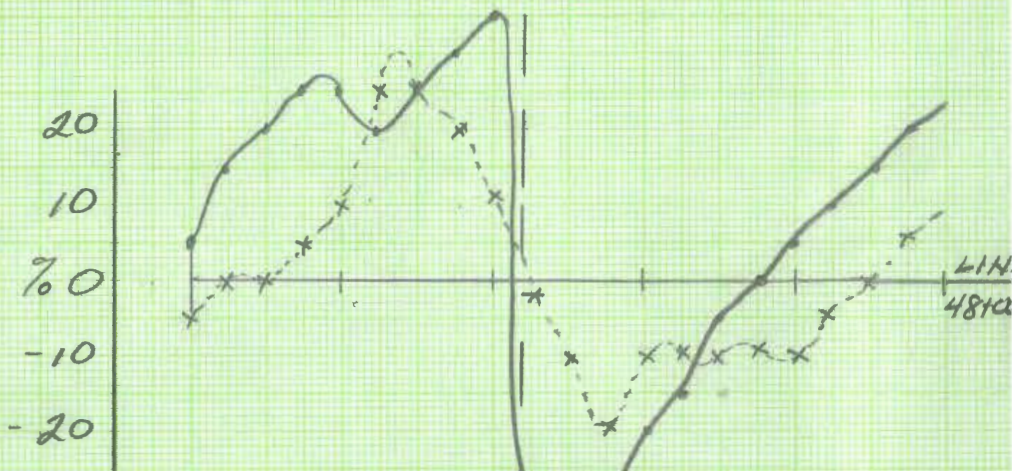
SCALE 1:5000
-100 -50 0 100
Meters

EM 16
Freq. Cutoff NA @ 24.0 kHz, 25m STA.

DIP ANGLE }
QUADRATURE } as a % + or -

CONDUCTOR 'CROSS OVER' LOCATION

5100S 4100S 3100S 2100S 1100S 20100



Readings Facing North
← SOUTH NORTH →

Profile

