

Prospecting Report
Claim 4220803
Cleaver Township
Larder Lake Division
Ontario

2.52814



By

Victor WA Warford
111 Evans St
South Porcupine, Ontario

September 2012

Prospecting Log

This report covers the prospecting done during the fall of 2011 and fall of 2012 on the 4 unit claim 4220803. This claim is located in the south west portion of Cleaver Township. Access is via the Forks River Road from Tisdale Street, South Porcupine Ontario, south 43 km to the truck park and then by ATV for 2km along a logging road and the by a old trail. See maps 1,2 and 3.

November 29, 2011

Traveled to claims with Mary Lyons and Dean Touchette to assess existing hazards from previous work done on property. Parked on road at point where the trail starts and walked in and explored the area indicated on map. Was informed that I could fill in the excavations with the material around them. Travelled home.

September 9, 2012

Traveled to claims with Angela Skinner and parked in truck park. By ATV travelled to point A on map 3. Many trees had fallen and had to be cut away from trail. Walked 100 m at 125 degrees and turned to a direction of 215 degrees and searched for any excavations from previous reported work. Bush was very thick with under brush, travel and vision very restricted, and could not find any sign of previous work. Ended up about 100 m from lake and found more excavations that are associated with vein 2. Collected 2 samples, one of the quartz vein and one of the wall rock. Traveled home.



Quartz vein material.

Persons who performed work

Victor Warford 2 days

Angela Skinner 1 day

Samples: Pending

Report Completion 15/09/2012

Map 1

Date / Time of Issue: Wed Sep 07 09:27:24 EDT 2011

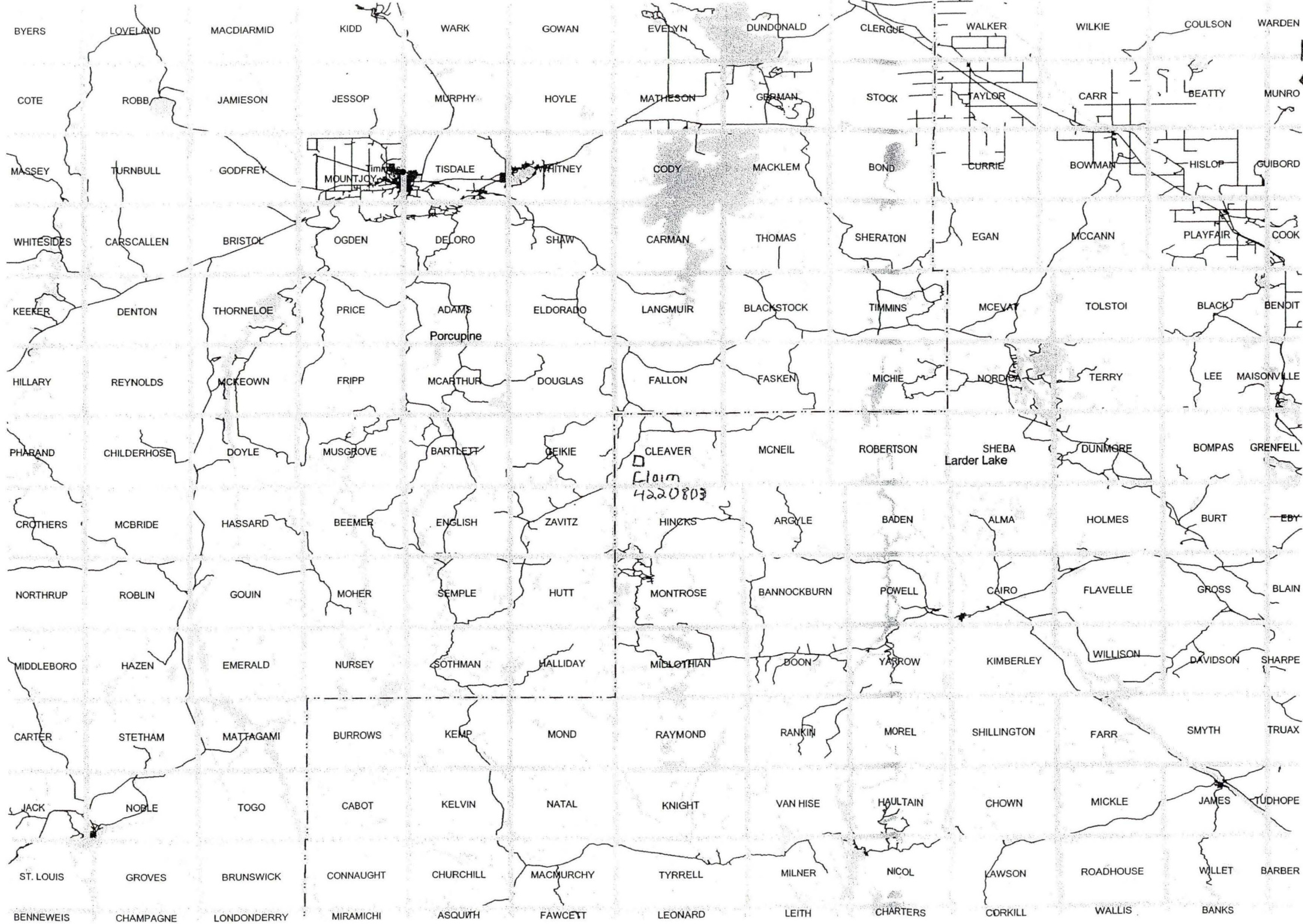
TOWNSHIP / AREA
CLEAVER

PLAN
G-3619

ADMINISTRATIVE DISTRICTS / DIVISIONS

Mining Division
Land Titles/Registry Division
Ministry of Natural Resources District

Larder Lake
TIMISKAMING
TIMMINS

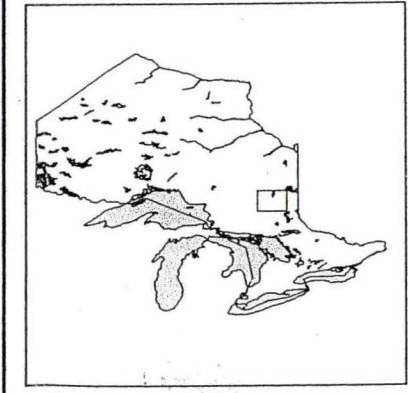


TOPOGRAPHIC

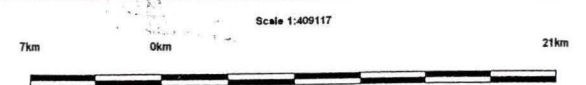
- Administrative Boundaries
- Township
- Concession, Lot
- Provincial Park
- Indian Reserve
- Cliff, Pit & Pile
- Contour
- Mine Shafts
- Mine Headframe
- Railway
- Road
- Trail
- Natural Gas Pipeline
- Utilities
- Tower

Land Tenure

- Freehold Patent**
 - Surface And Mining Rights
 - Surface Rights Only
 - Mining Rights Only
- Leasehold Patent**
 - Surface And Mining Rights
 - Surface Rights Only
 - Mining Rights Only
- Licence of Occupation**
 - Uses Not Specified
 - Surface And Mining Rights
 - Surface Rights Only
 - Mining Rights Only
 - Land Use Permit
 - Order In Council (Not open for staking)
 - Water Power Lease Agreement



- LAND TENURE WITHDRAWALS**
 - 1234 Areas Withdrawn from Disposition
 - Mining Acts Withdrawal Types
 - Wsm Surface And Mining Rights Withdrawn
 - W's Surface Rights Only Withdrawn
 - Wm Mining Rights Only Withdrawn
 - Order In Council Withdrawal Types
 - W'sm Surface And Mining Rights Withdrawn
 - W's Surface Rights Only Withdrawn
 - W'm Mining Rights Only Withdrawn
 - 1234567 Mining Claim
 - 1234567 Filed Only Mining Claims
 - Ns IMPORTANT NOTICES



Those wishing to stake mining claims should consult with the Provincial Mining Recorders' Office of the Ministry of Northern Development and Mines for additional information on the status of the lands shown hereon. This map is not intended for navigational, survey, or land title determination purposes as the information shown on this map is compiled from various sources. Completeness and accuracy are not guaranteed. Additional information may also be obtained through the local Land Titles or Registry Office, or the Ministry of Natural Resources.

General Information and Limitations
Contact Information:
Provincial Mining Recorders' Office
Wilket Green Miller Centre 933 Ramsey Lake Road
Sudbury ON P3E 6B5
Home Page: www.mndm.gov.on.ca/MNDM/MINES/LANDS/mfsmppge.htm

Toll Free
Tel: 1 (888) 415-9845 ext 5742
Fax: 1 (877) 970-1444

Map Datum: NAD 83
Projection: Geographic Coordinates
Topographic Data Source: Land Information Ontario
Mining Land Tenure Source: Provincial Mining Recorders' Office

This map may not show unregistered land tenure and interests in land including certain patents, leases, easements, right of ways, flooding rights, licences, or other forms of disposition of rights and interest from the Crown. Also certain land tenure and land uses that restrict or prohibit free entry to stake mining claims may not be illustrated.

The information shown is derived from digital data available in the Provincial Mining Recorders' Office at the time of downloading from the Ministry of Northern Development and Mines web site.

MAP 2

Date / Time of Issue: Thu Sep 15 13:01:40 EDT 2011

TOWNSHIP / AREA
CLEAVER

PLAN
G-3619

ADMINISTRATIVE DISTRICTS / DIVISIONS

Mining Division
Land Titles/Registry Division
Ministry of Natural Resources District

Larder Lake
TIMISKAMING
TIMMINS

TOPOGRAPHIC

- Administrative Boundaries
- Township
- Concession, Lot
- Provincial Park
- Indian Reserve
- Cliff, Pit & Pile
- Contour
- Mine Shafts
- Mine Headframe
- Railway
- Road
- Trail
- Natural Gas Pipeline
- Utilities
- Tower

Land Tenure

- Freehold Patent**
 - Surface And Mining Rights
 - Surface Rights Only
 - Mining Rights Only
- Leasehold Patent**
 - Surface And Mining Rights
 - Surface Rights Only
 - Mining Rights Only
- Licence of Occupation**
 - Uses Not Specified
 - Surface And Mining Rights
 - Surface Rights Only
 - Mining Rights Only
 - Land Use Permit
 - Order in Council (Not open for staking)
 - Water Power Lease Agreement

ADAMS	ELDORADO	LANGMUR	BLACKSTOCK
MCCARTHR	DOUGLAS	FALLON	FABKEN
BARTLETT	GERGE	CLEAVER	MCHER
ENGLISH	ZAVITZ	HINCKS	AROYLE
SEMPE	HUTT	MONTROSE	BANNOCKBURN

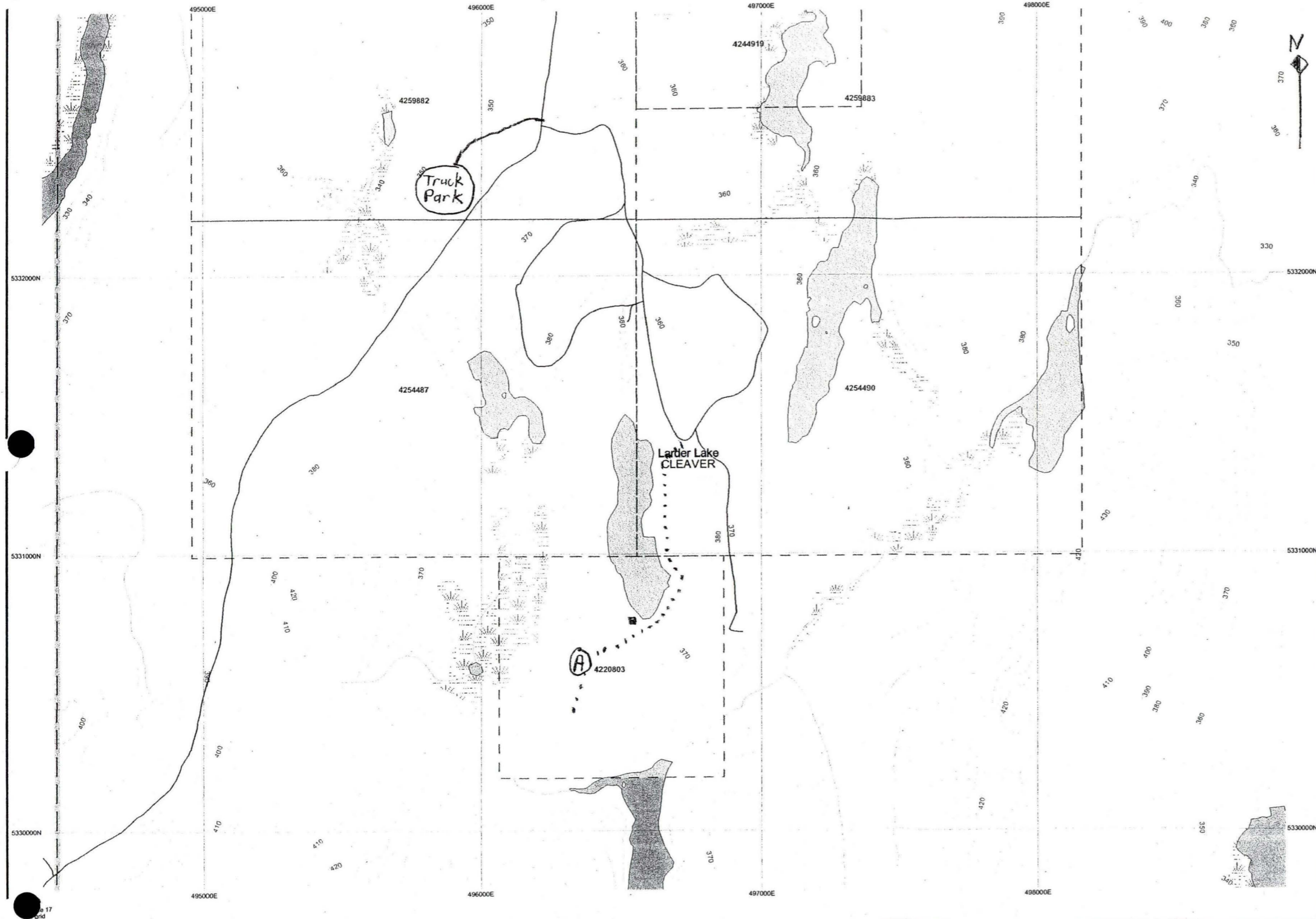
- Mining Claim
- Filed Only Mining Claims
- LAND TENURE WITHDRAWALS**
 - Areas Withdrawn from Disposition
 - Mining Acts Withdrawal Types
 - Surface And Mining Rights Withdrawn
 - Surface Rights Only Withdrawn
 - Mining Rights Only Withdrawn
 - Order in Council Withdrawal Types
 - Surface And Mining Rights Withdrawn
 - Surface Rights Only Withdrawn
 - Mining Rights Only Withdrawn
- IMPORTANT NOTICES



LAND TENURE WITHDRAWAL DESCRIPTIONS (list may not be complete)

Identifier	Type	Date	Description
W-L-101/04	Wsm	Oct 6, 1994	SEC.35 W-L-101/04 NER S&M 94/10/06

Location Point



Those wishing to stake mining claims should consult with the Provincial Mining Recorders' Office of the Ministry of Northern Development and Mines for additional information on the status of the lands shown hereon. This map is not intended for navigational, survey, or land title determination purposes as the information shown on this map is compiled from various sources. Completeness and accuracy are not guaranteed. Additional information may also be obtained through the local Land Titles or Registry Office, or the Ministry of Natural Resources.

The information shown is derived from digital data available in the Provincial Mining Recorders' Office at the time of downloading from the Ministry of Northern Development and Mines web site.

General Information and Limitations
 Contact Information:
 Provincial Mining Recorders' Office
 Willet Green Miller Centre 933 Ramsey Lake Road
 Sudbury ON P3E 6B5
 Home Page: www.mndm.gov.on.ca/MNDRM/MINES/LANDS/mlsmppge.htm

Toll Free
 Tel: 1 (888) 415-9845 ext 574
 Fax: 1 (877) 670-1444

Map Datum: NAD 83
 Projection: UTM (6 degree)
 Topographic Data Source: Land Information Ontario
 Mining Land Tenure Source: Provincial Mining Recorders' Office

This map may not show unregistered land tenure and interests in land including certain patents, leases, easements, right of ways, flooding rights, licences, or other forms of disposition of rights and interest from the Crown. Also certain land tenure and land uses that restrict or prohibit free entry to stake mining claims may not be illustrated.

Map 3

Date / Time of Issue: Fri Mar 27 11:15:24 EST 2009

TOWNSHIP / AREA
CLEAVER

PLAN
G-3619

ADMINISTRATIVE DISTRICTS / DIVISIONS

Mining Division
Land Titles/Registry Division
Ministry of Natural Resources District

Porcupine
TIMISKAMING
TIMMINS

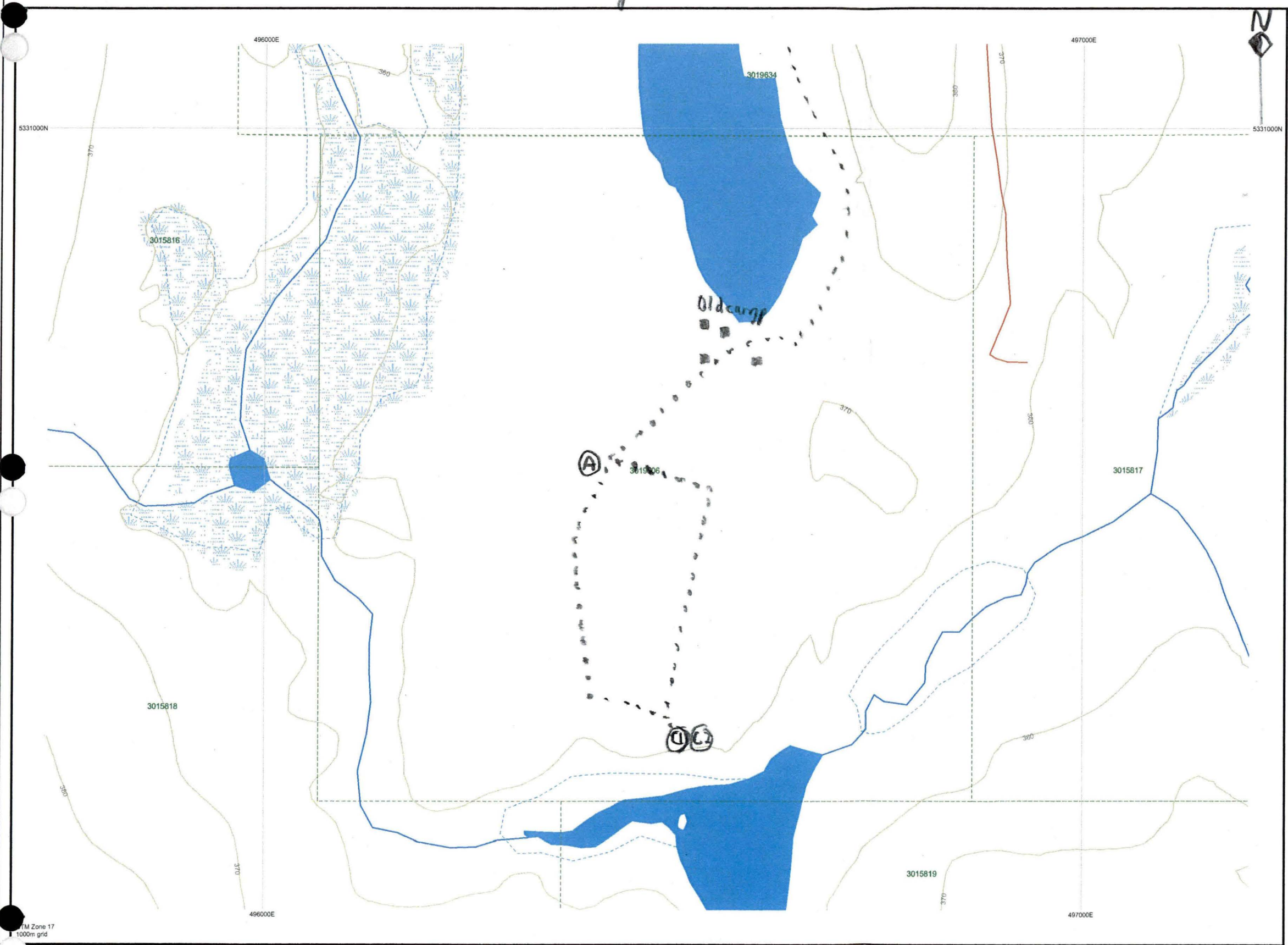
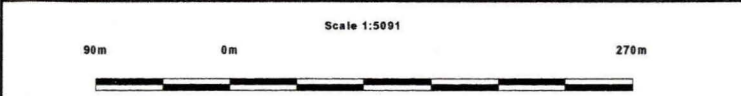
TOPOGRAPHIC

- Administrative Boundaries
- Township
- Concession, Lot
- Provincial Park
- Indian Reserve
- Cliff, Pit & Pile
- Contour
- Mine Shafts
- Mine Headframe
- Railway
- Road
- Trail
- Natural Gas Pipeline
- Utilities
- Tower

Land Tenure

- Freehold Patent**
 - Surface And Mining Rights
 - Surface Rights Only
 - Mining Rights Only
- Leasehold Patent**
 - Surface And Mining Rights
 - Surface Rights Only
 - Mining Rights Only
- Licence of Occupation**
 - Uses Not Specified
 - Surface And Mining Rights
 - Surface Rights Only
 - Mining Rights Only
 - Land Use Permit
 - Order in Council (Not open for staking)
 - Water Power Lease Agreement

MINING CLAIM	FILED ONLY MINING CLAIMS	LAND TENURE WITHDRAWALS	IMPORTANT NOTICES
1234567	1234567	1234	Ns
		Wsm	
		Ws	
		Wm	
		Wsm	
		Ws	
		Wm	



Those wishing to stake mining claims should consult with the Provincial Mining Recorders' Office of the Ministry of Northern Development and Mines for additional information on the status of the lands shown hereon. This map is not intended for navigational, survey, or land title determination purposes as the information shown on this map is compiled from various sources. Completeness and accuracy are not guaranteed. Additional information may also be obtained through the local Land Titles or Registry Office, or the Ministry of Natural Resources.

The information shown is derived from digital data available in the Provincial Mining Recorders' Office at the time of downloading from the Ministry of Northern Development and Mines web site.

General Information and Limitations
 Contact Information:
 Provincial Mining Recorders' Office
 Willet Green Miller Centre 933 Ramsey Lake Road
 Sudbury ON P3E 6B5
 Home Page: www.mndm.gov.on.ca/MNDM/MINES/LANDS/mismnpg.htm

Toll Free
 Tel: 1 (888) 415-9845 ext 57
 Fax: 1 (877) 670-1444

Map Datum: NAD 83
 Projection: UTM (6 degree)
 Topographic Data Source: Land Information Ontario
 Mining Land Tenure Source: Provincial Mining Recorders' Office

This map may not show unregistered land tenure and interests in land including certain patents, leases, easements, right of ways, flooding rights, licences, or other forms of disposition of rights and interest from the Crown. Also certain land tenure and land uses that restrict or prohibit free entry to stake mining claims may not be illustrated.