



TRENCHING REPORT

AFTON TWP.

CLAIM NO. 3004077

2.52504

August 2, 2012

Trenching Report Afton Twp.

Table of Contents

Report

Trenching Sketch (map)

Assay certificate

Figure 1	Property Location Map	1:40,000
Figure 2	Trenching Location Map	1:10,000

Trenching Report Afton Twp. Quartz vein

Summary

On July 18 Fred Blake and David Laronde travelled to Afton Twp. from Temagami with the purpose of procuring a sample of a quartz vein to have it assayed for gold. The distance to the work site was 300 km for a round trip. The rock was stripped off with hand tools and three holes (one inch in diameter) were drilled with a Cobra gas plugger, loaded and detonated using electric blasting caps. Subsequent assaying of a grab sample revealed only trace amounts of gold. The UTM NAD 83 coordinates of the sample were 545657E, 5198630N.

Vehicle access to the property was excellent since there was recent logging on the claim. From River Valley, travel north for 31 km to the beginning of the Lower Goose logging road heading more or less northwest. At km 21 on "the Goose" a branch heads northeast and then 1km in a tertiary road crosses the claim all the way to the no. 3 post of 3004077.

Geology

A steeply dipping quartz vein one meter wide is found trending northeast within a gabbro. The quartz has a shattered texture with minor pyrite 2%.

Rate of Pay

Fred Blake \$250/day

David Laronde \$250/day

Rentals and mileage

Gas Plugger \$100/day July 18 one day

Truck 300 km at 50 cents \$150

Assay and sample preparation \$30

Meals \$20




David Laronde

Certificate of Analysis
Meegwich Consultants

We certify that the assay results in the following
Certificate are factual and true.

Certificate # 14545

Certified by: 
Assayer

Certified by: 
President/Manager

Date: July 31, 2012

Disclaimer: The results included on this report relate only to the items tested.
The Certificate of Analysis should not be reproduced except in
full, without the written approval of the laboratory.

PolyMet Laboratories

Client: Meegwich Consultants
c/o Laronde, Dave
Job No. 0-180

CERTIFICATE

14545

Date:
July 31, 2012

Rock

Sample #	Au Oz/ton	Au g/tonne
05992	<.001	<.03

1 Rock

Std OxL 93	0.176	6.034
Blank	<.001	<.03

Assayer: 



5198 630 N

545657E / 5198630 N
NAO 83

545660 E

24 b

Qtz

vein

minor S

24 b

40°

80°

40°

80°

Legend

— contact, observed

24b gabbro

Qtz quartz

S sulphides

t_{80°} dip, strike

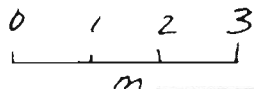
x sample location

r rust, gossan

⌵ trench

NAO 83

1:100



TRENCHING SKETCH

AFTON TWP.
QUARTZ VEIN

1:100

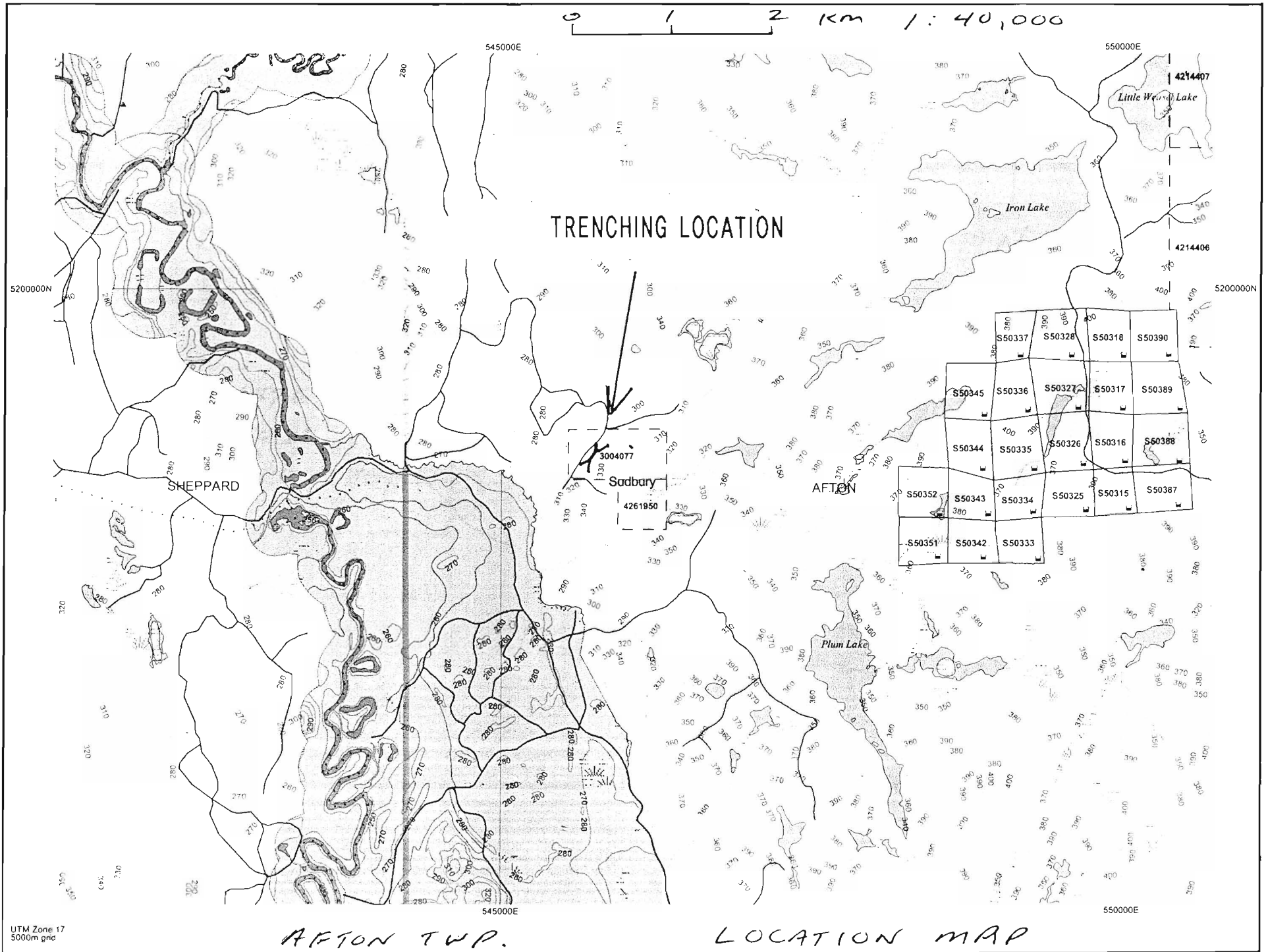


FIG. 1

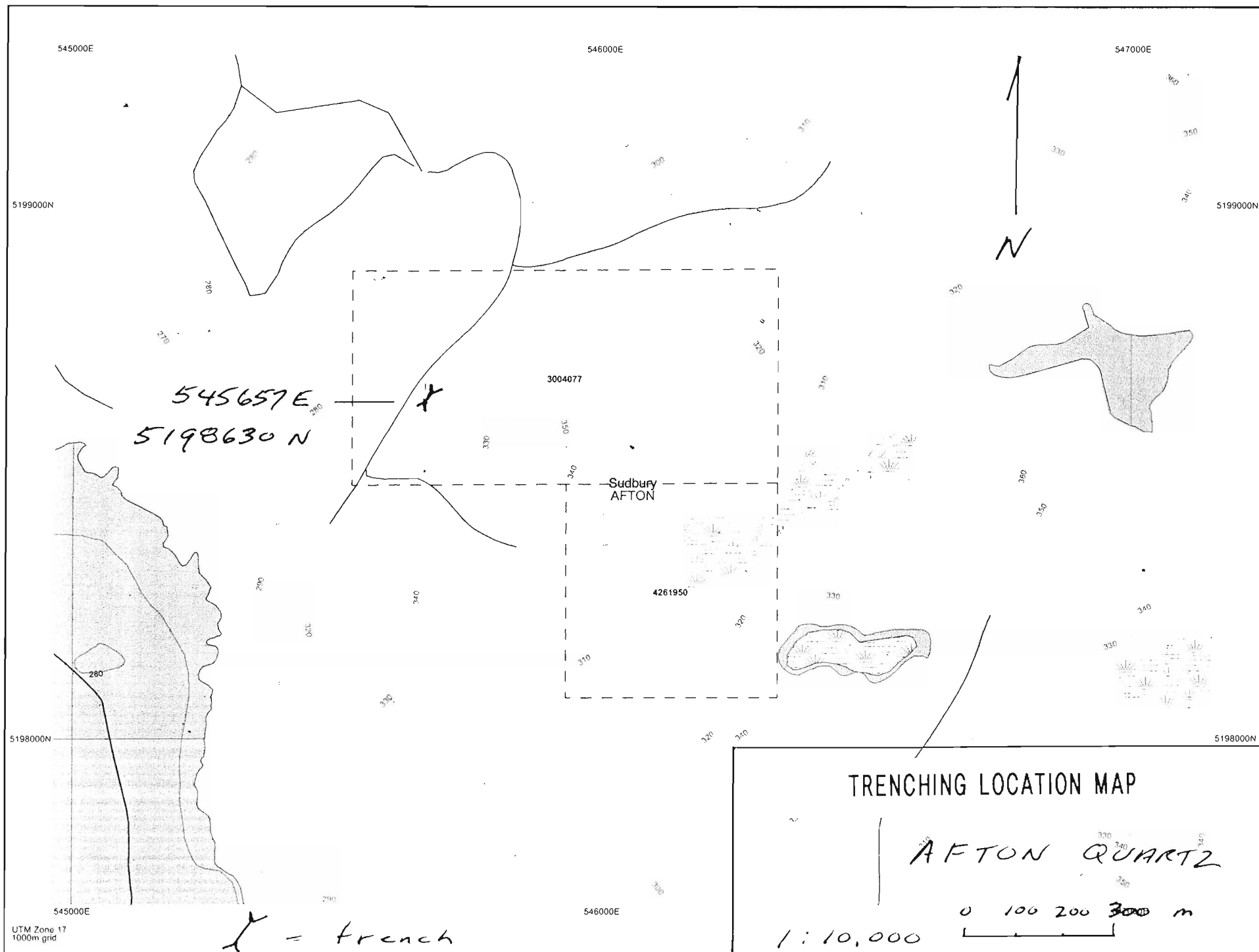


FIG. 2