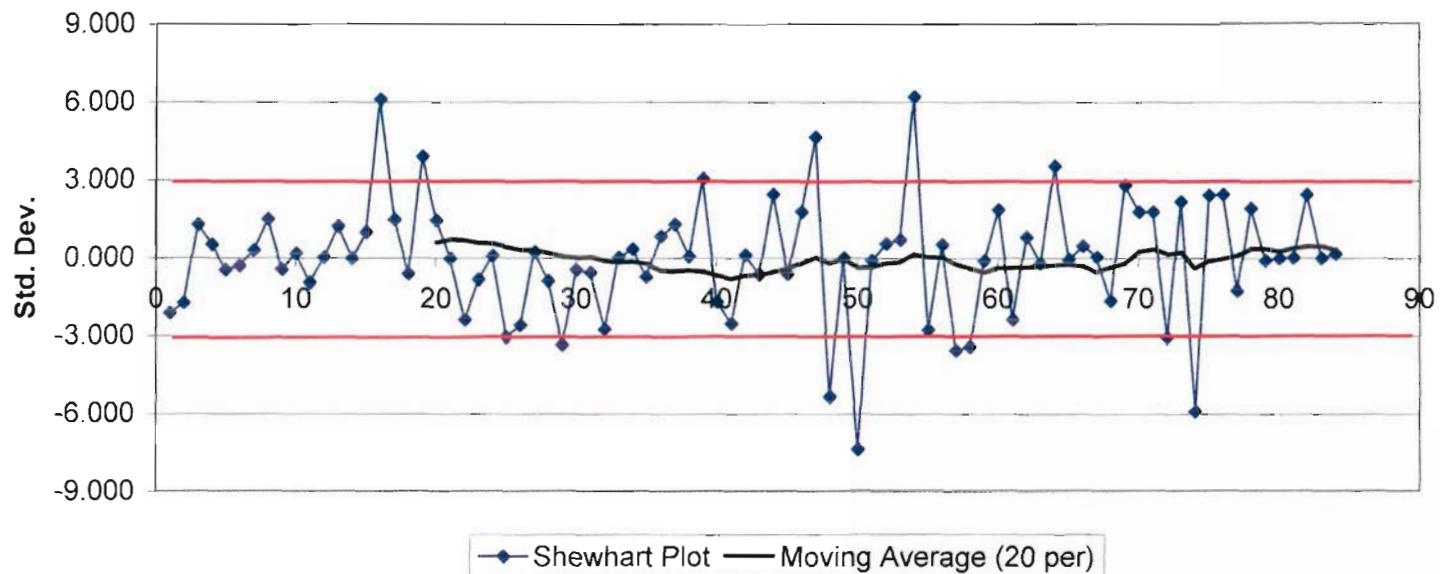


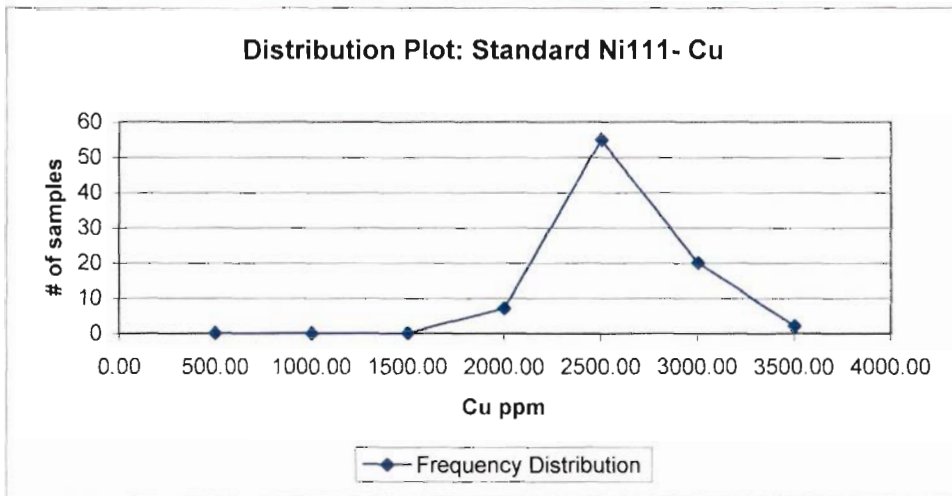
Standard Ni111 SXY-Cu

January, 2008

Shewhart Graph: Standard Ni111 SXY- Cu



Certified		Measured	
Element	Cu	Count	84.00
Unit	ppm	Average	2366.65
QC ID	SXY	Std Dev	259.85
Conc	2,375	Bias	-8.35
St Dev	112.7	Min	1542.00
Conf		Max	3073.00
N			



### Calculations

Frequency distribution		
Bin		Frequency
0	500.00	0
501.00	1000.00	0
1001.00	1500.00	0
1501	2000.00	7
2001.00	2500.00	55
2501.00	3000.00	20
3001	3500.00	2
		84

### Online LIMS QC record

Standard Id            SXY  
 Qc Type                Standard  
 Comment  
 Chemist                WCM Minerals

Create Tm  
 Update Tm

No. Standards  
 No. Records

Hole	Tag	Sample #	Cu FA Cu ppm
------	-----	----------	--------------------

Count	84
Averages	2375.000
s	112.7000

1            -2.130

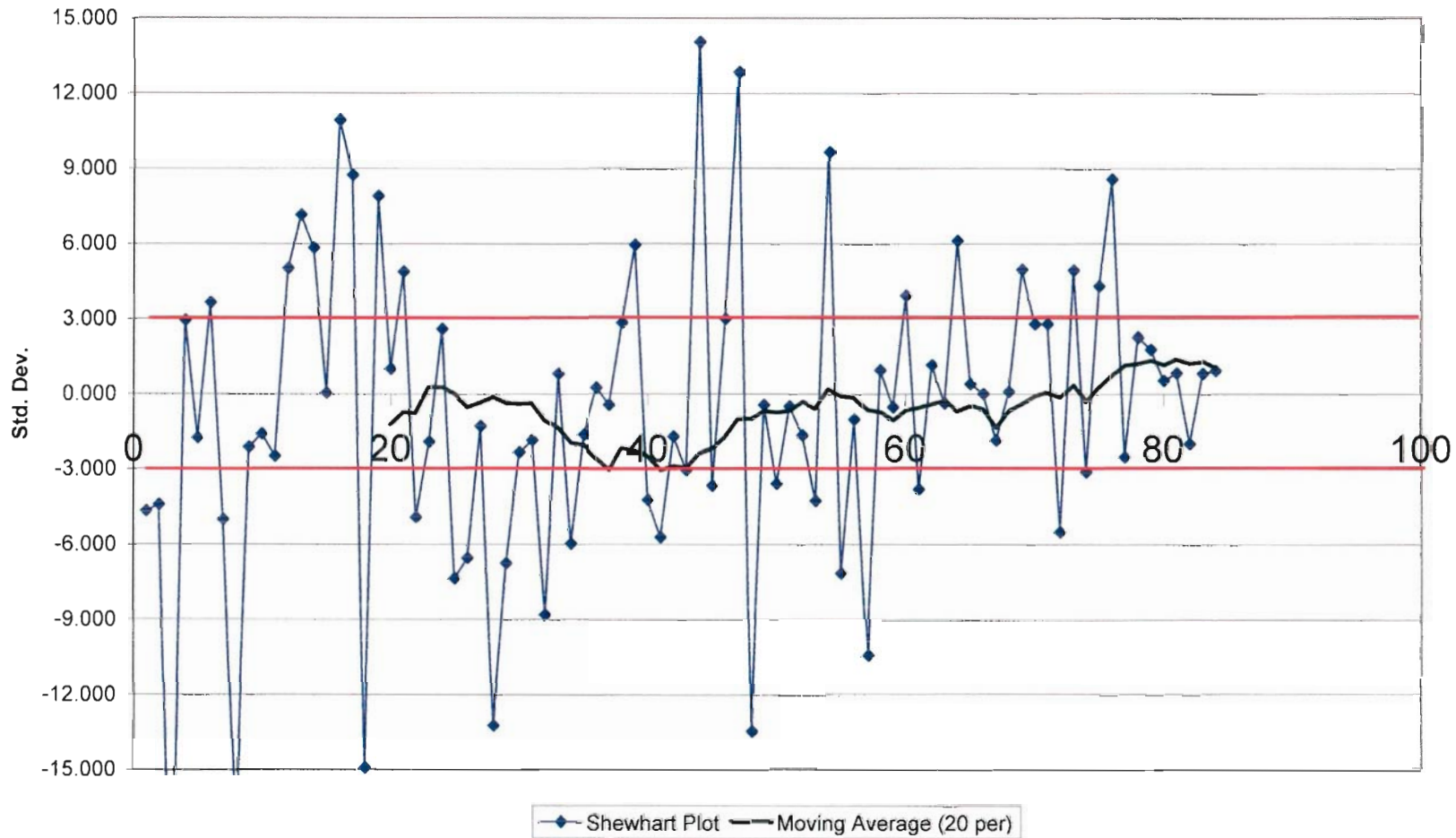
0406-50	Standard #111	206380	2135	2	-1.730
0406-55	Standard #111	205320	2180	3	1.269
0406-97	Standard #111	807000	2518	4	0.524
0407-101	Standard #111	204100	2434	5	-0.470
0407-101	Standard #111	204260	2322	6	-0.311
0407-102	Standard #111	204480	2340	7	0.302
0407-102	Standard #111	204500	2409	8	1.482
0407-102	Standard #111	204580	2542	9	-0.444
0407-103	Standard #111	207040	2325	10	0.169
0407-103	Standard #111	207000	2394	11	-0.949
0407-104	Standard #111	207060	2268	12	0.027
0407-105	Standard #111	207280	2378	13	1.216
0407-107	Standard #111	208760	2512	14	-0.027
0407-108	Standard #111	204880	2372	15	1.003
0407-109	Standard #111	204680	2488	16	6.096
0407-110	Standard #111	204800	3062	17	1.473
0407-110	Standard #111	204860	2541	18	-0.621
0407-111	Standard #111	207780	2305	19	3.886
0407-113	Standard #111	208220	2813	20	1.429
0407-113	Standard #111	208160	2536	21	-0.027
0407-117A	Standard #111	208640	2372	22	-2.378
0407-118	Standard #111	208980	2107	23	-0.843
0407-121	Standard #111	206320	2280	24	0.080
0407-121	Standard #111	206280	2384	25	-3.043
0407-123	Standard #111	205620	2032	26	-2.591
0407-123	Standard #111	205660	2083	27	0.222
0407-124A	Standard #111	209140	2400	28	-0.887
0407-124A	Standard #111	209320	2275	29	-3.345
0407-125	Standard #111	205340	1998	30	-0.470
0407-126	Standard #111	205960	2322	31	-0.568
0407-126	Standard #111	206040	2311	32	-2.751
0407-127	Standard #111	205760	2065	33	0.009
0407-127	Standard #111	205860	2376	34	0.328
0407-127	Standard #111	205740	2412	35	-0.736
0407-127	Standard #111	205720	2292	36	0.843
0407-128	Standard #111	206400	2470	37	1.287
0407-129	Standard #111	206840	2520	38	0.044
0407-129	Standard #111	206820	2380	39	3.052
0407-129	Standard #111	206800	2719	40	-1.686
0407-130	Standard #111	206580	2185	41	-2.529

0407-130	Standard #111	206520	2090	42	0.115
0407-130	Standard #111	206600	2388	43	-0.639
0407-130	Standard #111	206640	2303	44	2.449
0407-130	Standard #111	206720	2651	45	-0.630
0407-131	Standard #111	209540	2304	46	1.766
0407-131	Standard #111	301100	2574	47	4.658
0407-132	Standard #111	301260	2900	48	-5.342
0407-133	Standard #111	301580	1773	49	-0.009
0407-133	Standard #111	301520	2374	50	-7.391
0407-133	Standard #111	301500	1542	51	-0.098
0407-134	Standard #111	301800	2364	52	0.550
0407-134	Standard #111	301860	2437	53	0.710
0407-134	Standard #111	301880	2455	54	6.193
0407-135	Standard #111	202260	3073	55	-2.777
0407-136	Standard #111	202100	2062	56	0.506
0407-137	Standard #111	806600	2432	57	-3.558
0407-138	Standard #111	301480	1974	58	-3.416
0407-139	Standard #111	806760	1990	59	-0.115
0407-140	Standard #111	209700	2362	60	1.846
0407-142	Standard #111	415600	2583	61	-2.387
0407-143	Standard #111	415760	2106	62	0.799
0407-144	Standard #111	415980	2465	63	-0.222
0407-144	Standard #111	416020	2350	64	3.514
0407-144	Standard #111	416080	2771	65	-0.071
0407-144	Standard #111	416000	2367	66	0.453
0407-146	Standard #111	416380	2426	67	0.027
0407-146	Standard #111	416360	2378	68	-1.659
0407-146	Standard #111	416420	2003	69	2.795
0407-148	Standard #111	368760	2188	70	1.748
0407-149	Standard #111	368600	2690	71	1.748
0407-150	Standard #111	368980	2572	72	-3.079
0407-150	Standard #111	369000	2028	73	2.156
0407-151B	Standard #111	416300	2618	74	-5.918
0407-152	Standard #111	369080	1708	75	2.405
0407-153	Standard #111	369380	2646	76	2.431
0407-153	Standard #111	369360	2649	77	-1.269
0407-153	Standard #111	369300	2232	78	1.899
0407-154	Standard #111	419600	2589	79	-0.106
0407-155	Standard #111	419760	2363	80	-0.027
0407-156	Standard #111	419980	2372	81	0.000

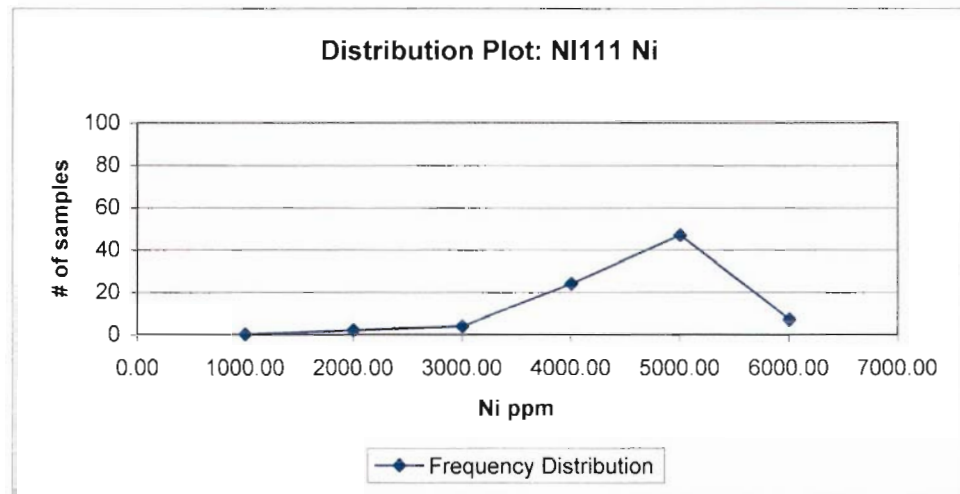
0407-156	Standard #111	420000	2375	82	2.431
0407-158	Standard #111	362260	2649	83	-0.018
0407-160	Standard #111	362500	2373	84	0.160
0407-160	Standard #111	362480	2393		

Standard NI111 SXY-Ni  
January, 2008

Shewhart Graph: NI111 SXY- Ni



Certified		Measured	
Element	Ni	Count	84.00
Unit	ppm	Average	4112.63
QC ID	SXY	Std Dev	707.19
Conc	4,225	Bias	-112.37
St Dev	106.1	Min	1812.00
Conf		Max	5713.00
N			



### Calculations

Frequency distribution

Bin	Frequency
0	1000.00
1001.00	2000.00
2001.00	3000.00
3001	4000.00
4001.00	5000.00
5001.00	6000.00
	84

### Online LIMS QC record

Standard Id	SXY
Qc Type	Standard
Comment	
Chemist	WCM Minerals

Create Tm  
Update Tm

No. Standards  
No. Records

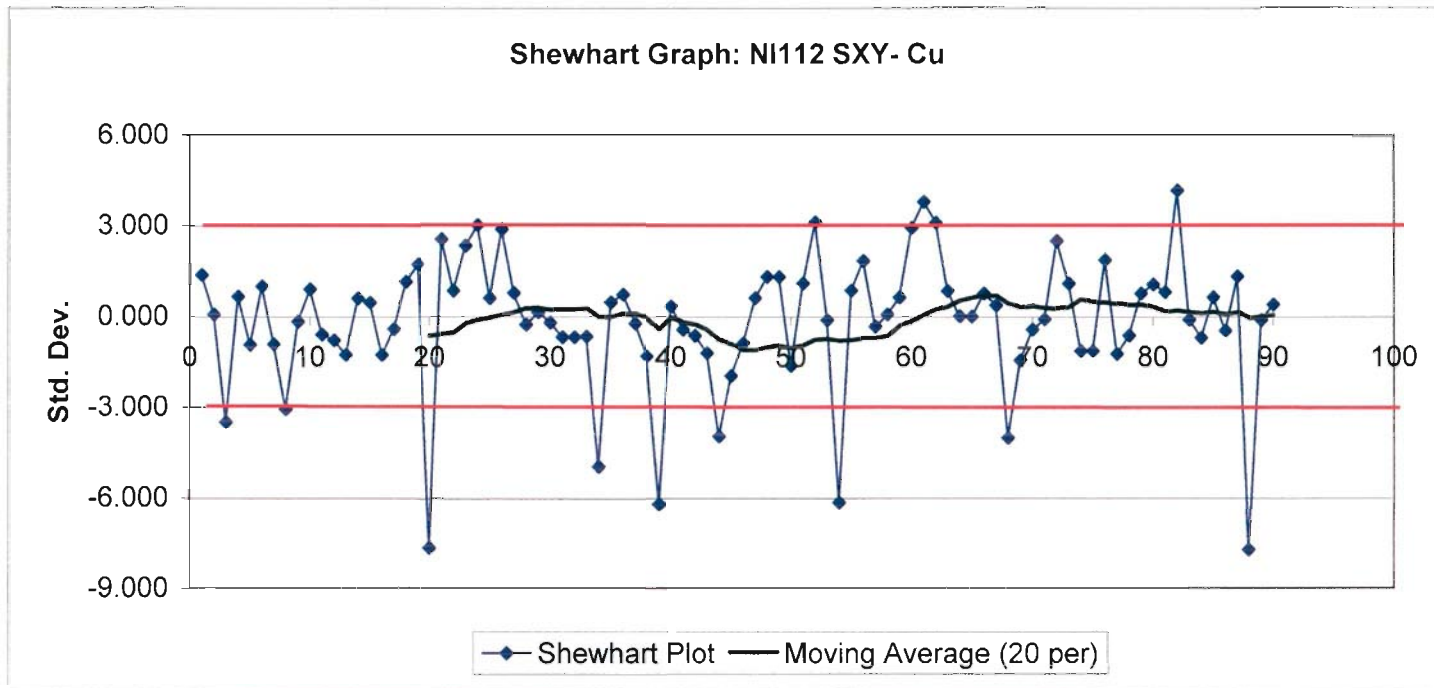
Hole	Tag	Sample #	Ni FA Ni ppm		Count	84 Average s
					1	-4.675
0406-50	Standard #111	206380	3729	1	2	-4.420
0406-55	Standard #111	205320	3756	2	3	-22.743
0406-97	Standard #111	807000	1812	3	4	2.922
0407-101	Standard #111	204100	4535	4	5	-1.762
0407-101	Standard #111	204260	4038	5	6	3.638
0407-102	Standard #111	204480	4611	6	7	-5.014
0407-102	Standard #111	204500	3693	7	8	-17.559
0407-102	Standard #111	204580	2362	8	9	-2.139
0407-103	Standard #111	207040	3998	9	10	-1.602
0407-103	Standard #111	207000	4055	10	11	-2.498
0407-104	Standard #111	207060	3960	11	12	5.014
0407-105	Standard #111	207280	4757	12	13	7.125
0407-107	Standard #111	208760	4981	13	14	5.825
0407-108	Standard #111	204880	4843	14	15	0.038
0407-109	Standard #111	204680	4229	15	16	10.905
0407-110	Standard #111	204800	5382	16	17	8.718
0407-110	Standard #111	204860	5150	17	18	-14.939
0407-111	Standard #111	207780	2640	18	19	7.879
0407-113	Standard #111	208220	5061	19	20	0.999
0407-113	Standard #111	208160	4331	20	21	4.882
0407-117A	Standard #111	208640	4743	21	22	-4.929
0407-118	Standard #111	208980	3702	22	23	-1.923
0407-121	Standard #111	206320	4021	23	24	2.582
0407-121	Standard #111	206280	4499	24	25	-7.380
0407-123	Standard #111	205620	3442	25	26	-6.569
0407-123	Standard #111	205660	3528	26	27	-1.291
0407-124A	Standard #111	209140	4088	27	28	-13.252



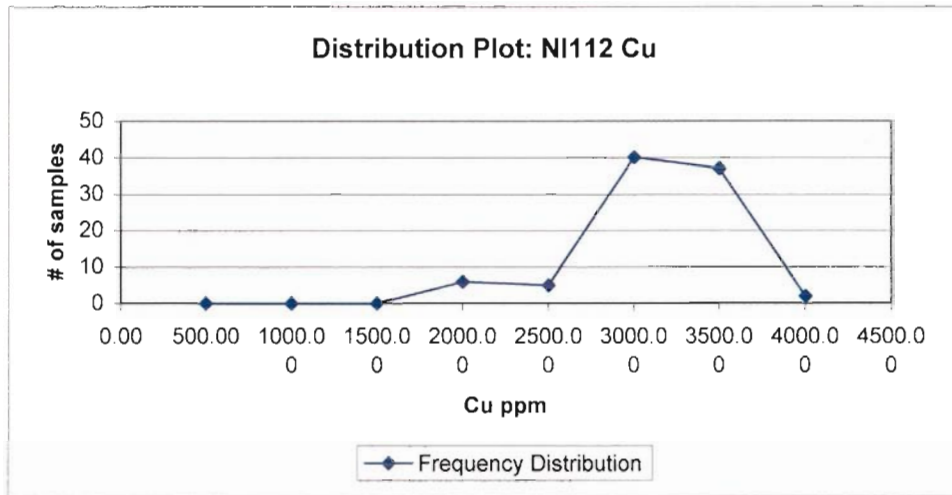
0407-124A	Standard #111	209320	2819	28	29	-6.758
0407-125	Standard #111	205340	3508	29	30	-2.347
0407-126	Standard #111	205960	3976	30	31	-1.857
0407-126	Standard #111	206040	4028	31	32	-8.831
0407-127	Standard #111	205760	3288	32	33	0.811
0407-127	Standard #111	205860	4311	33	34	-5.985
0407-127	Standard #111	205740	3590	34	35	-1.631
0407-127	Standard #111	205720	4052	35	36	0.236
0407-128	Standard #111	206400	4250	36	37	-0.443
0407-129	Standard #111	206840	4178	37	38	2.828
0407-129	Standard #111	206820	4525	38	39	5.947
0407-129	Standard #111	206800	4856	39	40	-4.232
0407-130	Standard #111	206580	3776	40	41	-5.730
0407-130	Standard #111	206520	3617	41	42	-1.715
0407-130	Standard #111	206600	4043	42	43	-3.044
0407-130	Standard #111	206640	3902	43	44	14.025
0407-130	Standard #111	206720	5713	44	45	-3.666
0407-131	Standard #111	209540	3836	45	46	2.978
0407-131	Standard #111	301100	4541	46	47	12.837
0407-132	Standard #111	301260	5587	47	48	-13.478
0407-133	Standard #111	301580	2795	48	49	-0.452
0407-133	Standard #111	301520	4177	49	50	-3.582
0407-133	Standard #111	301500	3845	50	51	-0.509
0407-134	Standard #111	301800	4171	51	52	-1.668
0407-134	Standard #111	301860	4048	52	53	-4.270
0407-134	Standard #111	301880	3772	53	54	9.651
0407-135	Standard #111	202260	5249	54	55	-7.154
0407-136	Standard #111	202100	3466	55	56	-1.037
0407-137	Standard #111	806600	4115	56	57	-10.471
0407-138	Standard #111	301480	3114	57	58	0.943
0407-139	Standard #111	806760	4325	58	59	-0.537
0407-140	Standard #111	209700	4168	59	60	3.911
0407-142	Standard #111	415600	4640	60	61	-3.808
0407-143	Standard #111	415760	3821	61	62	1.150
0407-144	Standard #111	415980	4347	62	63	-0.386
0407-144	Standard #111	416020	4184	63	64	6.107
0407-144	Standard #111	416080	4873	64	65	0.386
0407-144	Standard #111	416000	4266	65	66	-0.009
0407-146	Standard #111	416380	4224	66	67	-1.876
0407-146	Standard #111	416360	4026	67	68	0.075

0407-146	Standard #111	416420	1826	68	69	4.948
0407-148	Standard #111	368760	4233	69	70	2.762
0407-149	Standard #111	368600	4750	70	71	2.762
0407-150	Standard #111	368980	4518	71	72	-5.523
0407-150	Standard #111	369000	3639	72	73	4.920
0407-151B	Standard #111	416300	4747	73	74	-3.120
0407-152	Standard #111	369080	3894	74	75	4.298
0407-153	Standard #111	369380	4681	75	76	8.549
0407-153	Standard #111	369360	5132	76	77	-2.516
0407-153	Standard #111	369300	3958	77	78	2.253
0407-154	Standard #111	419600	4464	78	79	1.762
0407-155	Standard #111	419760	4412	79	80	0.528
0407-156	Standard #111	419980	4281	80	81	0.829
0407-156	Standard #111	420000	4313	81	82	-2.008
0407-158	Standard #111	362260	4012	82	83	0.801
0407-160	Standard #111	362500	4310	83	84	0.924
0407-160	Standard #111	362480	4323	84		

Standard NI112 SXY-Copper  
January, 2008



Certified		Measured	
Element	Copper	Count	86.00
Unit	ppm	Average	2879.91
QC ID	SXY	Std Dev	407.37
Conc	2,920.7	Bias	-40.79
St Dev	177.7	Min	1564.00
Conf		Max	3663.00
N			



### Calculations

#### Frequency distribution

Bin		Frequency
0	500.00	0
501.00	1000.00	0
1001.00	1500.00	0
1501.00	2000.00	6
2001.00	2500.00	5
2501.00	3000.00	40
3001.00	3500.00	37
3501.00	4000.00	2
		90

### Online LIMS QC record

Standard Id            SXY  
 Qc Type                Standard  
 Comment  
 Chemist                WCM Minerals

Create Tm  
 Update Tm

No. Standards  
 No. Records

Hole	Tag	Sample #	Cu FA Copper ppm
------	-----	----------	------------------------

Count	90
Average	2920.700
s	177.7000

---

0406-48	Standard #112	209460	3166
---------	---------------	--------	------

1	1.380
2	0.075

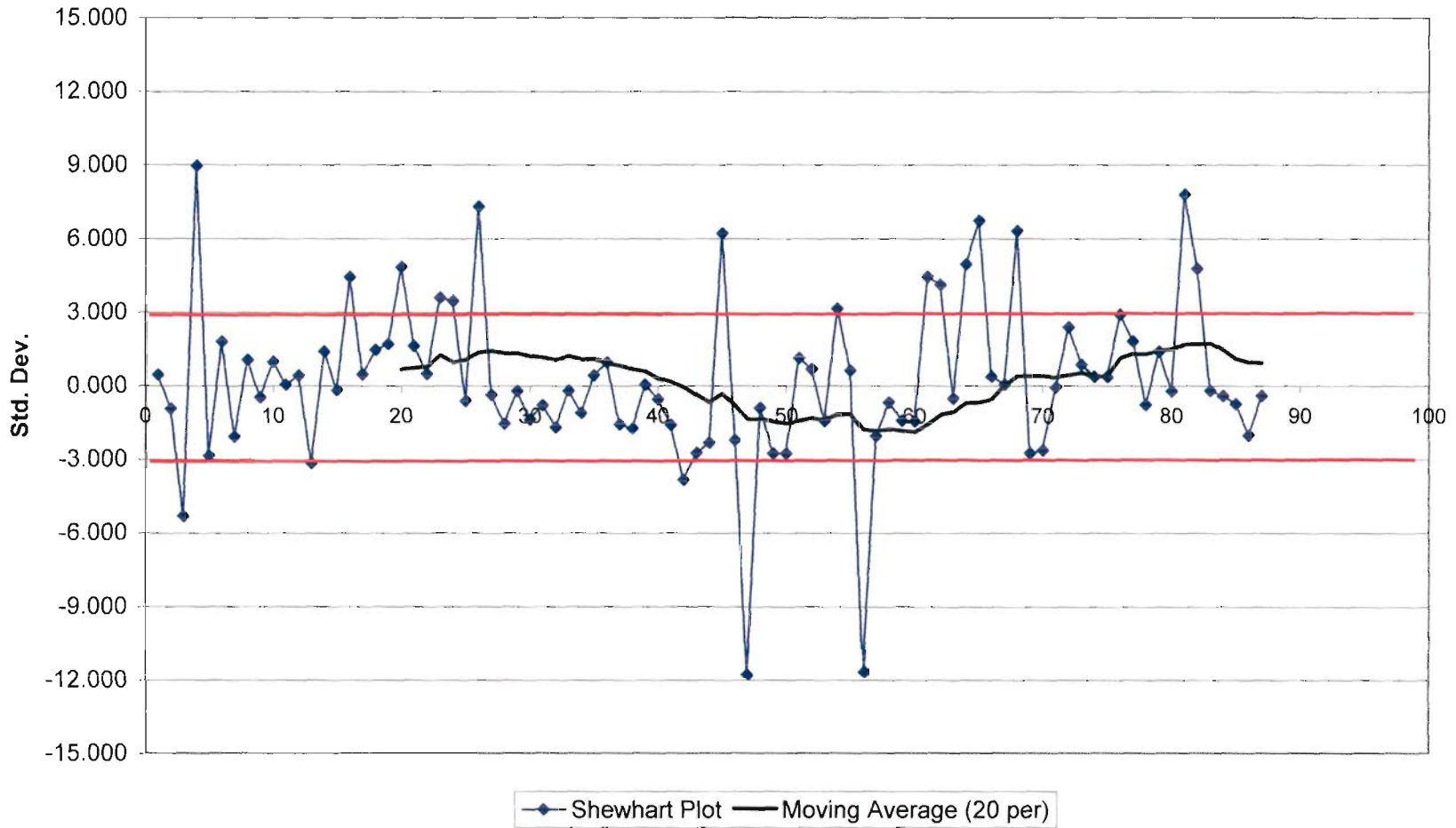
0406-50	Standard #112	206360	2934	3	-3.499
0406-76	Standard #112	416200	2299	4	0.660
0407-101	Standard #112	204900	3038	5	-0.932
0407-101	Standard #112	204220	2755	6	0.992
0407-101	Standard #112	204140	3097	7	-0.916
0407-101	Standard #112	204180	2758	8	-3.065
0407-102	Standard #112	204520	2376	9	-0.173
0407-102	Standard #112	204560	2890	10	0.896
0407-104	Standard #112	208700	3080	11	-0.595
0407-105	Standard #112	207260	2815	12	-0.786
0407-105	Standard #112	207320	2781	13	-1.264
0407-105	Standard #112	207160	2696	14	0.598
0407-105	Standard #112	207200	3027	15	0.463
0407-106	Standard #112	207400	3003	16	-1.264
0407-106	Standard #112	207480	2696	17	-0.403
0407-107	Standard #112	207600	2849	18	1.155
0407-107	Standard #112	207660	3126	19	1.729
0407-109	Standard #112	204700	3228	20	-7.635
0407-110	Standard #112	205000	1564	21	2.551
0407-112	Standard #112	207820	3374	22	0.846
0407-112	Standard #112	207840	3071	23	2.331
0407-113	Standard #112	208260	3335	24	3.012
0407-113	Standard #112	208060	3456	25	0.598
0407-113A	Standard #112	208780	3027	26	2.872
0407-115	Standard #112	207940	3431	27	0.778
0407-116	Standard #112	208340	3059	28	-0.268
0407-116	Standard #112	208380	2873	29	0.131
0407-116	Standard #112	208360	2944	30	-0.207
0407-116	Standard #112	208440	2884	31	-0.679
0407-116	Standard #112	208460	2800	32	-0.685
0407-117	Standard #112	208800	2799	33	-0.657
0407-117A	Standard #112	208480	2804	34	-4.950
0407-117A	Standard #112	208520	2041	35	0.463
0407-117A	Standard #112	208540	3003	36	0.722
0407-117A	Standard #112	208580	3049	37	-0.240
0407-118	Standard #112	208880	2878	38	-1.310
0407-118	Standard #112	208960	2688	39	-6.205
0407-119	Standard #112	204980	1818	40	0.339
0407-121	Standard #112	206200	2981	41	-0.426
0407-121	Standard #112	206340	2845	42	-0.629

0407-122	Standard #112	205260	2809	43	-1.203
0407-123	Standard #112	205640	2707	44	-3.960
0407-124A	Standard #112	209160	2217	45	-1.957
0407-124A	Standard #112	209240	2573	46	-0.882
0407-124A	Standard #112	209280	1684	47	0.615
0407-125	Standard #112	205480	2764	48	1.313
0407-126	Standard #112	206000	3030	49	1.313
0407-127	Standard #112	205840	3154	50	-1.625
0407-128	Standard #112	206440	2632	51	1.099
0407-128	Standard #112	206480	3116	52	3.119
0407-129	Standard #112	206920	3475	53	-0.122
0407-130	Standard #112	206540	2899	54	-6.149
0407-131	Standard #112	301180	1828	55	0.863
0407-131	Standard #112	301140	3074	56	1.847
0407-132	Standard #112	301220	3249	57	-0.336
0407-133	Standard #112	301540	2861	58	0.069
0407-134	Standard #112	301700	2933	59	-0.638
0407-134	Standard #112	301900	3034	60	2.945
0407-135	Standard #112	202220	3444	61	3.800
0407-135	Standard #112	202140	3596	62	3.114
0407-135	Standard #112	202180	3474	63	0.851
0407-137	Standard #112	806640	3072	64	0.007
0407-139	Standard #112	806720	2922	65	-0.004
0407-139	Standard #112	806680	2920	66	0.767
0407-140	Standard #112	209820	3057	67	0.373
0407-140	Standard #112	209740	2987	68	-4.005
0407-141	Standard #112	209860	2209	69	-1.445
0407-142	Standard #112	415680	2664	70	-0.432
0407-142	Standard #112	415640	2844	71	-0.083
0407-143	Standard #112	415720	2906	72	2.506
0407-143	Standard #112	415820	1776	73	1.093
0407-144	Standard #112	416040	3366	74	-1.141
0407-144	Standard #112	416060	3115	75	-1.141
0407-145	Standard #112	806980	2718	76	1.864
0407-146	Standard #112	416400	3252	77	-1.236
0407-148	Standard #112	368720	2701	78	-0.629
0407-152	Standard #112	369040	2809	79	0.767
0407-152	Standard #112	369060	3057	80	1.065
0407-152	Standard #112	369200	3110	81	0.801
0407-153	Standard #112	369400	3063	82	4.177

0407-154	Standard #112	419640	3663	83	-0.105
0407-155	Standard #112	419720	2902	84	-0.702
0407-155	Standard #112	419680	2796	85	0.638
0407-158	Standard #112	362140	3034	86	-0.465
0407-158	Standard #112	362220	2838	87	1.324
0407-158	Standard #112	362180	3156	88	-7.736

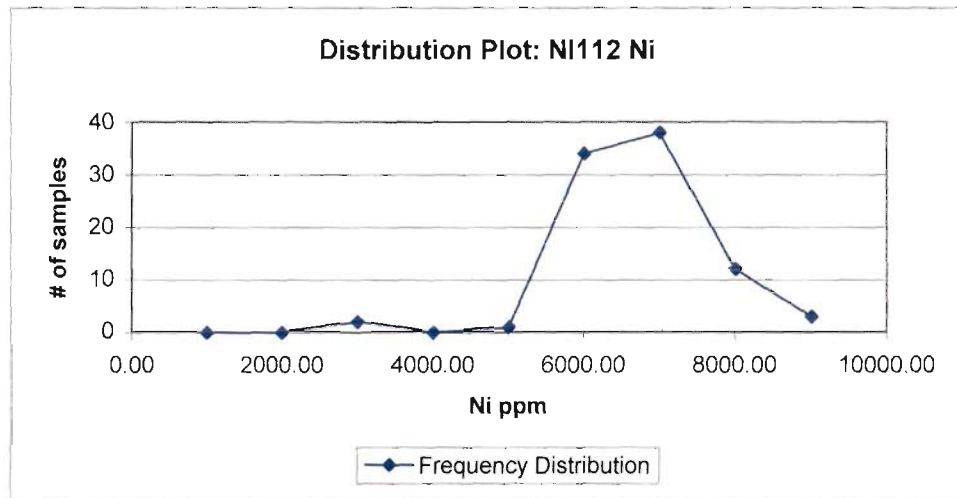
Standard NI112 SXY-Ni  
January, 2008

Shewhart Graph: NI112 SXY- Ni





Certified		Measured	
Element	Ni	Count	86.00
Unit	ppm	Average	6189.92
QC ID	SXY	Std Dev	900.13
Conc	6,112.7	Bias	77.22
St Dev	271.6	Min	2916.00
Conf		Max	8547.00
N			



### Calculations

Frequency distribution			
Bin		Frequency	
0	1000.00	0	0
1001.00	2000.00	0	0
2001.00	3000.00	2	0
3001	4000.00	0	0
4001.00	5000.00	1	0
5001.00	6000.00	34	0
6001.00	7000.00	38	0
7001.00	8000.00	12	0
8001.00	9000.00	3	0
		90	

### Online LIMS QC record

Standard Id            SXY  
 Qc Type                Standard  
 Comment  
 Chemist                WCM Minerals  
 Create Tm

Update Tm

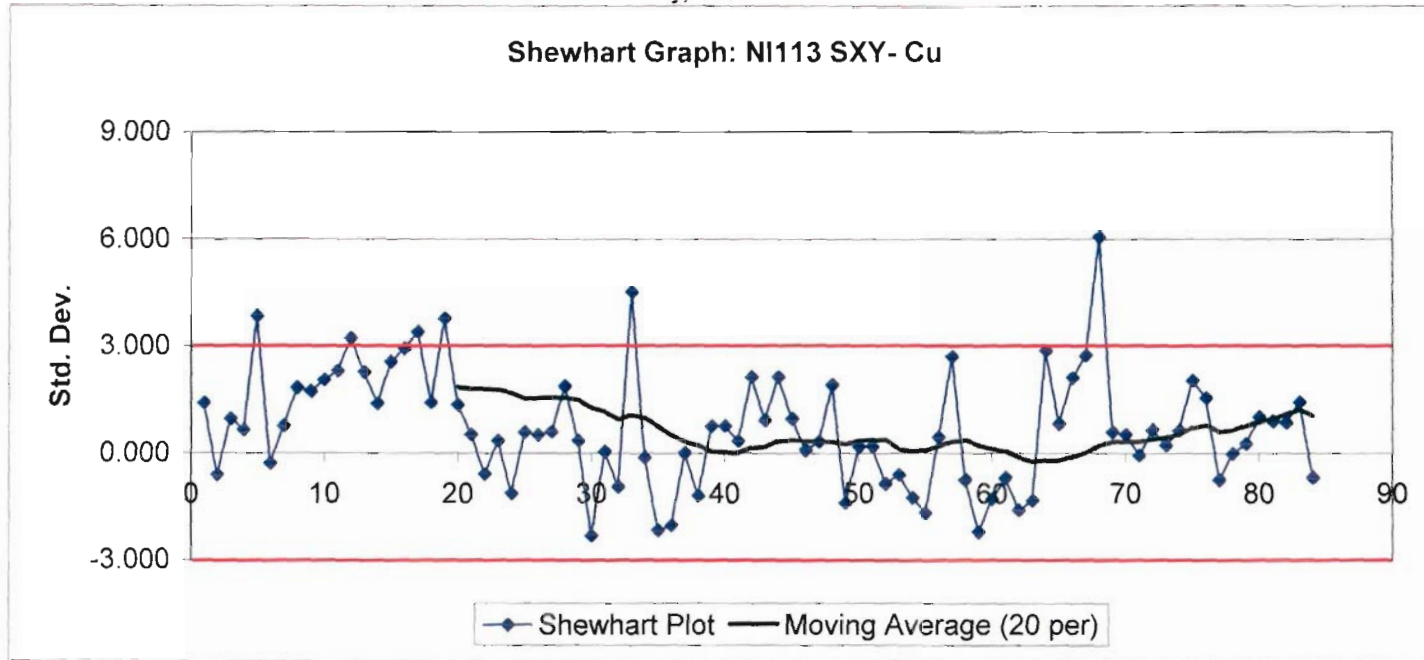
No. Standards  
No. Records

Hole	Tag	Sample #	Ni FA Ni ppm	Count Average s	90 6112.700 271.6000
				1	0.450
0406-48	Standard #112	209460	6235	2	-0.927
0406-50	Standard #112	206360	5861	3	-5.304
0406-76	Standard #112	416200	4672	4	8.963
0407-101	Standard #112	204900	8547	5	-2.841
0407-101	Standard #112	204220	5341	6	1.798
0407-101	Standard #112	204140	6601	7	-2.068
0407-101	Standard #112	204180	5551	8	1.054
0407-102	Standard #112	204520	6399	9	-0.459
0407-102	Standard #112	204560	5988	10	0.980
0407-104	Standard #112	208700	6379	11	0.045
0407-105	Standard #112	207260	6125	12	0.436
0407-105	Standard #112	207320	6231	13	-3.147
0407-105	Standard #112	207160	5258	14	1.411
0407-105	Standard #112	207200	6496	15	-0.172
0407-106	Standard #112	207400	6066	16	4.434
0407-106	Standard #112	207480	7317	17	0.472
0407-107	Standard #112	207600	6241	18	1.459
0407-107	Standard #112	207660	6509	19	1.713
0407-109	Standard #112	204700	6578	20	4.846
0407-110	Standard #112	205000	7429	21	1.621
0407-112	Standard #112	207820	6553	22	0.483
0407-112	Standard #112	207840	6244	23	3.587
0407-113	Standard #112	208260	7087	24	3.462
0407-113	Standard #112	208060	7053	25	-0.614
0407-113A	Standard #112	208780	5946	26	7.295
0407-115	Standard #112	207940	8094	27	-0.367
0407-116	Standard #112	208340	6013	28	-1.545
0407-116	Standard #112	208380	5693	29	-0.212

0407-116	Standard #112	208360	6055	30	-1.372
0407-116	Standard #112	208440	5740	31	-0.791
0407-116	Standard #112	208460	5898	32	-1.689
0407-117	Standard #112	208800	5654	33	-0.194
0407-117A	Standard #112	208480	6060	34	-1.103
0407-117A	Standard #112	208520	5813	35	0.432
0407-117A	Standard #112	208540	6230	36	0.955
0407-117A	Standard #112	208580	6372	37	-1.567
0407-118	Standard #112	208880	5687	38	-1.726
0407-118	Standard #112	208960	5644	39	0.042
0407-119	Standard #112	204980	6124	40	-0.544
0407-121	Standard #112	206200	5965	41	-1.597
0407-121	Standard #112	206340	5679	42	-3.821
0407-122	Standard #112	205260	5075	43	-2.731
0407-123	Standard #112	205640	5371	44	-2.315
0407-124A	Standard #112	209160	5484	45	6.220
0407-124A	Standard #112	209240	7802	46	-2.204
0407-124A	Standard #112	209280	6721	47	-11.770
0407-125	Standard #112	205480	5514	48	-0.897
0407-126	Standard #112	206000	2916	49	-2.749
0407-127	Standard #112	205840	5869	50	-2.749
0407-128	Standard #112	206440	5366	51	1.131
0407-128	Standard #112	206480	6420	52	0.690
0407-129	Standard #112	206920	6300	53	-1.435
0407-130	Standard #112	206540	5723	54	3.153
0407-131	Standard #112	301180	6969	55	0.623
0407-131	Standard #112	301140	6282	56	-11.659
0407-132	Standard #112	301220	2946	57	-2.042
0407-133	Standard #112	301540	5558	58	-0.669
0407-134	Standard #112	301700	5931	59	-1.420
0407-134	Standard #112	301900	5727	60	-1.439
0407-135	Standard #112	202220	5722	61	4.441
0407-135	Standard #112	202140	7319	62	4.121
0407-135	Standard #112	202180	7232	63	-0.507
0407-137	Standard #112	806640	5975	64	4.946
0407-139	Standard #112	806720	7456	65	6.728
0407-139	Standard #112	806680	7940	66	0.369
0407-140	Standard #112	209820	6213	67	0.045
0407-140	Standard #112	209740	6125	68	6.312
0407-141	Standard #112	209860	7827	69	-2.753

0407-142	Standard #112	415680	5365	70	-2.631
0407-142	Standard #112	415640	5398	71	-0.065
0407-143	Standard #112	415720	6095	72	2.383
0407-143	Standard #112	415820	5839	73	0.859
0407-144	Standard #112	416040	6760	74	0.355
0407-144	Standard #112	416060	6346	75	0.355
0407-145	Standard #112	806980	6209	76	2.899
0407-146	Standard #112	416400	6900	77	1.813
0407-148	Standard #112	368720	6605	78	-0.779
0407-152	Standard #112	369040	5901	79	1.385
0407-152	Standard #112	369060	6489	80	-0.220
0407-152	Standard #112	369200	6053	81	7.781
0407-153	Standard #112	369400	8226	82	4.762
0407-154	Standard #112	419640	7406	83	-0.198
0407-155	Standard #112	419720	6059	84	-0.422
0407-155	Standard #112	419680	5998	85	-0.746
0407-158	Standard #112	362140	5910	86	-2.024
0407-158	Standard #112	362220	5563	87	-0.404
0407-158	Standard #112	362180	6003	88	5.215
0407-159	Standard #112	362300	7529	89	1.879

Standard NI113 SXY-Copper  
January, 2008



Certified		Measured	
Element	Copper	Count	84.00
Unit	ppm	Average	2559.12
QC ID	SXY	Std Dev	246.64
Conc	2,450.7	Bias	108.42
St Dev	154.3	Min	2092.00
Conf		Max	3383.00
N			



0405-47	Standard #113	301960	2356	3	0.948
0407-101	Standard #113	204160	2597	4	0.650
0407-102	Standard #113	204420	2551	5	3.826
0407-102	Standard #113	204540	3041	6	-0.283
0407-105	Standard #113	207300	2407	7	0.760
0407-106	Standard #113	207440	2568	8	1.830
0407-107	Standard #113	207620	2733	9	1.726
0407-107	Standard #113	207680	2717	10	2.043
0407-108	Standard #113	204620	2766	11	2.296
0407-110	Standard #113	204840	2805	12	3.203
0407-110	Standard #113	204760	2945	13	2.264
0407-110	Standard #113	204720	2800	14	1.382
0407-110	Standard #113	204820	2664	15	2.562
0407-113	Standard #113	208240	2846	16	2.918
0407-113	Standard #113	208200	2901	17	3.398
0407-113	Standard #113	208120	2975	18	1.408
0407-113	Standard #113	208180	2668	19	3.761
0407-113	Standard #113	208100	3031	20	1.343
0407-115	Standard #113	208020	2658	21	0.514
0407-115	Standard #113	207960	2530	22	-0.594
0407-117A	Standard #113	208620	2359	23	0.339
0407-118	Standard #113	208860	2503	24	-1.126
0407-119	Standard #113	204960	2277	25	0.579
0407-121	Standard #113	206300	2540	26	0.507
0407-121	Standard #113	206220	2529	27	0.592
0407-122	Standard #113	205200	2542	28	1.868
0407-122	Standard #113	205300	2739	29	0.339
0407-123	Standard #113	209340	2503	30	-2.325
0407-124A	Standard #113	209300	2092	31	0.028
0407-124A	Standard #113	209220	2455	32	-0.951
0407-124A	Standard #113	209200	2304	33	4.506
0407-124A	Standard #113	209080	3146	34	-0.128
0407-125	Standard #113	205460	2431	35	-2.169
0407-125	Standard #113	205420	2116	36	-2.033
0407-125	Standard #113	205360	2137	37	-0.005
0407-126	Standard #113	206080	2450	38	-1.203
0407-126	Standard #113	205980	2265	39	0.747
0407-126	Standard #113	206100	2566	40	0.754
0407-127	Standard #113	205800	2567	41	0.326
0407-127	Standard #113	205900	2501	42	2.121

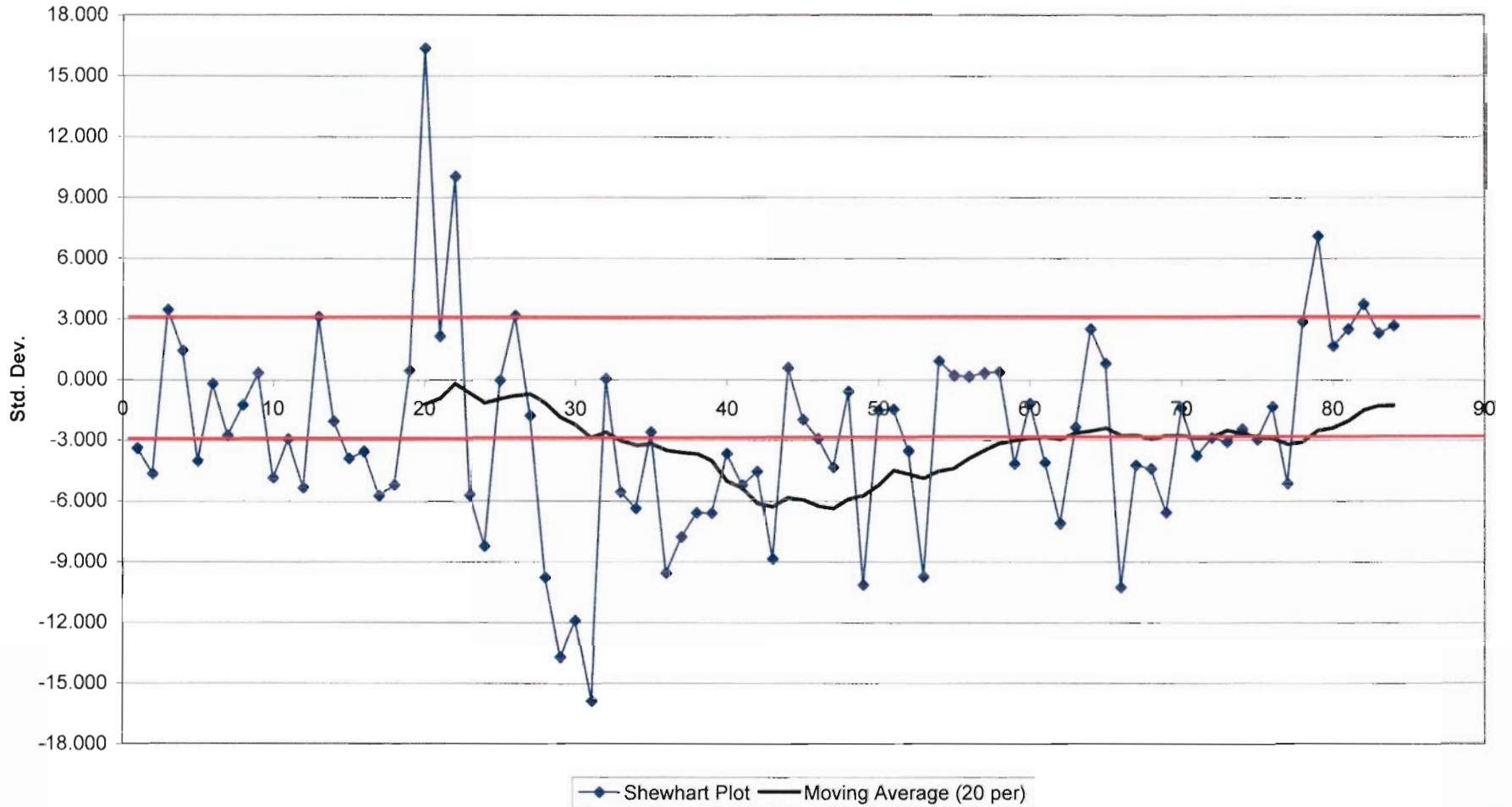
0407-128	Standard #113	206420	2778	43	0.909
0407-128	Standard #113	206460	2591	44	2.121
0407-129	Standard #113	206900	2778	45	0.948
0407-129	Standard #113	206960	2597	46	0.073
0407-129	Standard #113	209380	2462	47	0.300
0407-129	Standard #113	209400	2497	48	1.901
0407-129	Standard #113	206760	2744	49	-1.411
0407-130	Standard #113	206620	2233	50	0.164
0407-131	Standard #113	301080	2476	51	0.177
0407-131	Standard #113	301160	2478	52	-0.866
0407-133	Standard #113	301620	2317	53	-0.614
0407-134	Standard #113	301840	2356	54	-1.255
0407-134	Standard #113	301720	2257	55	-1.683
0407-134	Standard #113	301760	2191	56	0.443
0407-134	Standard #113	301820	2519	57	2.698
0407-135	Standard #113	202160	2867	58	-0.756
0407-136	Standard #113	202080	2334	59	-2.221
0407-137	Standard #113	806660	2108	60	-1.294
0407-137	Standard #113	806580	2251	61	-0.698
0407-138	Standard #113	301420	2343	62	-1.605
0407-140	Standard #113	209680	2203	63	-1.333
0407-144	Standard #113	415920	2245	64	2.854
0407-145	Standard #113	806920	2891	65	0.819
0407-146	Standard #113	416340	2577	66	2.108
0407-146	Standard #113	416460	2776	67	2.724
0407-147	Standard #113	416480	2871	68	6.042
0407-149	Standard #113	368640	3383	69	0.579
0407-150	Standard #113	368920	2540	70	0.514
0407-151B	Standard #113	416120	2530	71	-0.076
0407-151B	Standard #113	416220	2439	72	0.644
0407-151B	Standard #113	416260	2550	73	0.216
0407-151B	Standard #113	416320	2484	74	0.631
0407-152	Standard #113	369120	2548	75	2.030
0407-153	Standard #113	369320	2764	76	1.538
0407-153	Standard #113	369340	2688	77	-0.763
0407-153	Standard #113	369260	2333	78	-0.030
0407-155	Standard #113	419660	2446	79	0.255
0407-156	Standard #113	419920	2490	80	0.994
0407-157	Standard #113	362080	2604	81	0.883
0407-158	Standard #113	362160	2587	82	0.838



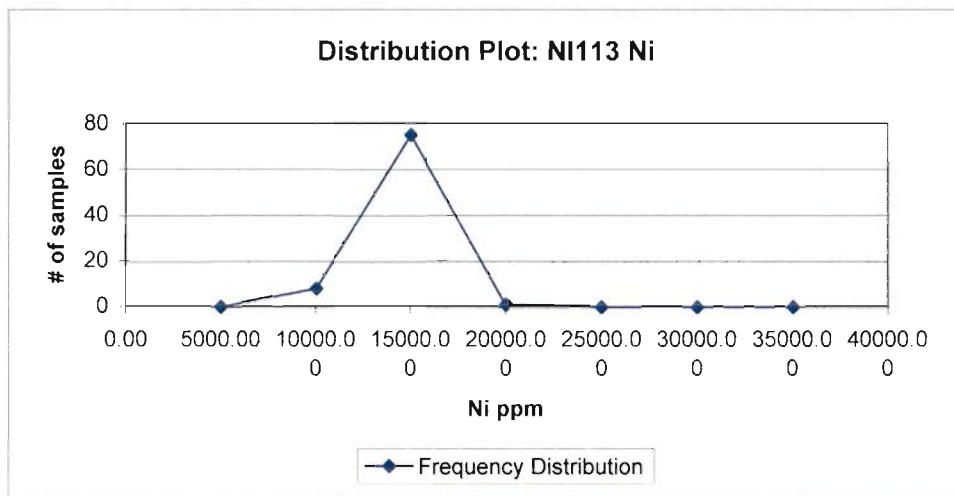
0407-160	Standard #113	445080	2580	83	1.421
0407-160	Standard #113	362420	2670	84	-0.698
0407-161	Standard #113	445160	2343		

Standard NI113 SXY-Ni  
January, 2008

Shewhart Graph: NI113 SXY- Ni



Certified			Measured	
Element	Ni		Count	84.00
Unit	ppm		Average	11595.33
QC ID	SXY		Std Dev	1176.30
Conc	12,222.7		Bias	-627.37
St Dev	240.5		Min	8414.00
Conf			Max	16155.00
N				



### Calculations

Frequency distribution		
<i>Bin</i>		<i>Frequency</i>
0	5000.00	0
5001.00	10000.00	8
10001.00	15000.00	75
15001.00	20000.00	1
20001.00	25000.00	0
25001.00	30000.00	0
30001.00	35000.00	0
		84

### Online LIMS QC record

Standard Id                      SXY  
 Qc Type                            Standard  
 Comment  
 Chemist                            WCM Minerals  
  
 Create Tm

Update Tm

No. Standards  
No. Records

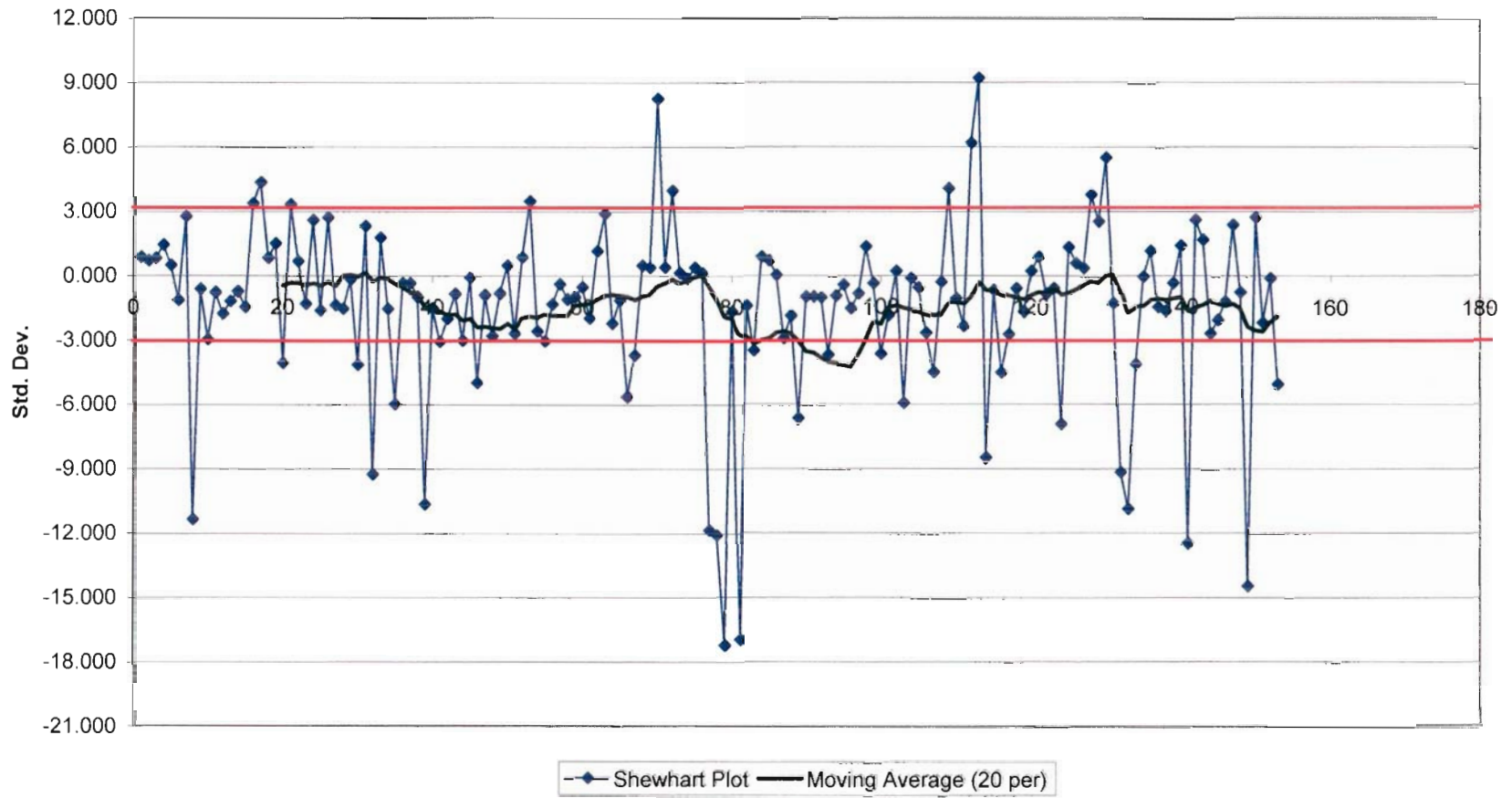
Hole	Tag	Sample #	Ni FA Ni ppm	Count Average s	84 12222.700 240.5000
				1	-3.379
				2	-4.631
				3	3.457
				4	1.444
				5	-3.999
				6	-0.190
				7	-2.756
				8	-1.242
				9	0.346
				10	-4.835
				11	-2.926
				12	-5.329
				13	3.099
				14	-2.057
				15	-3.870
				16	-3.529
				17	-5.708
				18	-5.184
				19	0.454
				20	16.351
				21	2.159
				22	10.026
				23	-5.691
				24	-8.232
				25	-0.057
				26	3.157
				27	-1.787
				28	-9.783
				29	-13.716

0407-123	Standard #113	209340	8924	30	-11.903
0407-124A	Standard #113	209300	9360	31	-15.837
0407-124A	Standard #113	209220	8414	32	0.039
0407-124A	Standard #113	209200	12232	33	-5.562
0407-124A	Standard #113	209080	10885	34	-6.360
0407-125	Standard #113	205460	10693	35	-2.593
0407-125	Standard #113	205420	11599	36	-9.562
0407-125	Standard #113	205360	9923	37	-7.762
0407-126	Standard #113	206080	10356	38	-6.573
0407-126	Standard #113	205980	10642	39	-6.581
0407-126	Standard #113	206100	10640	40	-3.670
0407-127	Standard #113	205800	11340	41	-5.221
0407-127	Standard #113	205900	10967	42	-4.552
0407-128	Standard #113	206420	11128	43	-8.864
0407-128	Standard #113	206460	10091	44	0.567
0407-129	Standard #113	206900	12359	45	-1.986
0407-129	Standard #113	206960	11745	46	-2.947
0407-129	Standard #113	209380	11514	47	-4.336
0407-129	Standard #113	209400	11180	48	-0.598
0407-129	Standard #113	206760	12079	49	-10.165
0407-130	Standard #113	206620	9778	50	-1.533
0407-131	Standard #113	301080	11854	51	-1.475
0407-131	Standard #113	301160	11868	52	-3.537
0407-133	Standard #113	301620	11372	53	-9.753
0407-134	Standard #113	301840	9877	54	0.895
0407-134	Standard #113	301720	12438	55	0.176
0407-134	Standard #113	301760	12265	56	0.130
0407-134	Standard #113	301820	12254	57	0.296
0407-135	Standard #113	202160	12294	58	0.359
0407-136	Standard #113	202080	12309	59	-4.169
0407-137	Standard #113	806660	11220	60	-1.196
0407-137	Standard #113	806580	11935	61	-4.103
0407-138	Standard #113	301420	11236	62	-7.126
0407-140	Standard #113	209680	10509	63	-2.377
0407-144	Standard #113	415920	11651	64	2.484
0407-145	Standard #113	806920	12820	65	0.770
0407-146	Standard #113	416340	12408	66	-10.286
0407-146	Standard #113	416460	9749	67	-4.240
0407-147	Standard #113	416480	11203	68	-4.419
0407-149	Standard #113	368640	11160	69	-6.589

0407-150	Standard #113	368920	10638	70	-1.425
0407-151B	Standard #113	416120	11880	71	-3.787
0407-151B	Standard #113	416220	11312	72	-2.897
0407-151B	Standard #113	416260	11526	73	-3.121
0407-151B	Standard #113	416320	11472	74	-2.477
0407-152	Standard #113	369120	11627	75	-2.997
0407-153	Standard #113	369320	11502	76	-1.363
0407-153	Standard #113	369340	11895	77	-5.155
0407-153	Standard #113	369260	10983	78	2.845
0407-155	Standard #113	419660	12907	79	7.086
0407-156	Standard #113	419920	13927	80	1.631
0407-157	Standard #113	362080	12615	81	2.471
0407-158	Standard #113	362160	12817	82	3.710
0407-160	Standard #113	445080	13115	83	2.267
0407-160	Standard #113	362420	12768	84	2.650
0407-161	Standard #113	445160	12860		

Standard NI114 SXY-Copper  
January, 2008

Shewhart Graph: NI114 SXY- Cu







Update Tm

No. Standards

No. Records

Hole	Tag	Sample #	Cu FA Copper ppm	Count	Average s
				153	4514.700
					162.5000
				1	0.851
				2	0.685
				3	0.820
				4	1.423
				5	0.476
				6	-1.143
				7	2.746
				8	-11.346
				9	-0.626
				10	-2.964
				11	-0.786
				12	-1.758
				13	-1.180
				14	-0.737
				15	-1.450
				16	3.362
				17	4.316
				18	0.833
				19	1.491
				20	-4.066
				21	3.325
				22	0.660
				23	-1.303
				24	2.593
				25	-1.610
				26	2.710
				27	-1.358
				28	-1.530
				29	-0.177

0407-118	Standard #114	208840	4486	30	-4.152
0407-118	Standard #114	209000	3840	31	2.310
0407-118	Standard #114	208820	4890	32	-9.254
0407-120	Standard #114	205040	3011	33	1.774
0407-121	Standard #114	206240	4803	34	-1.537
0407-121	Standard #114	206160	4265	35	-5.961
0407-121	Standard #114	206260	3546	36	-0.355
0407-121	Standard #114	206180	4457	37	-0.355
0407-122	Standard #114	205220	4457	38	-0.983
0407-122	Standard #114	205160	4355	39	-10.638
0407-123	Standard #114	205680	2786	40	-1.500
0407-124A	Standard #114	209060	4271	41	-3.069
0407-124A	Standard #114	209180	4016	42	-1.998
0407-124A	Standard #114	209120	4190	43	-0.847
0407-124A	Standard #114	209100	4377	44	-3.026
0407-124A	Standard #114	209260	4023	45	-0.097
0407-125	Standard #114	205580	4499	46	-4.995
0407-125	Standard #114	205560	3703	47	-0.909
0407-127	Standard #114	205700	4367	48	-2.804
0407-127	Standard #114	205880	4059	49	-0.829
0407-127	Standard #114	205780	4380	50	0.470
0407-127	Standard #114	205820	4591	51	-2.687
0407-129	Standard #114	206860	4078	52	0.851
0407-129	Standard #114	206940	4653	53	3.473
0407-130	Standard #114	206740	5079	54	-2.583
0407-130	Standard #114	206500	4095	55	-3.050
0407-130	Standard #114	206560	4019	56	-1.315
0407-130	Standard #114	206680	4301	57	-0.404
0407-131	Standard #114	301120	4449	58	-1.100
0407-131	Standard #114	209520	4336	59	-0.989
0407-131	Standard #114	301040	4354	60	-0.540
0407-132	Standard #114	301360	4427	61	-1.967
0407-132	Standard #114	301340	4195	62	1.134
0407-132	Standard #114	301240	4699	63	2.888
0407-133	Standard #114	301660	4984	64	-2.214
0407-133	Standard #114	301680	4155	65	-1.130
0407-133	Standard #114	301640	4331	66	-5.641
0407-134	Standard #114	301740	3598	67	-3.697
0407-134	Standard #114	301780	3914	68	0.470
0407-135	Standard #114	202360	4591	69	0.383

re-assay

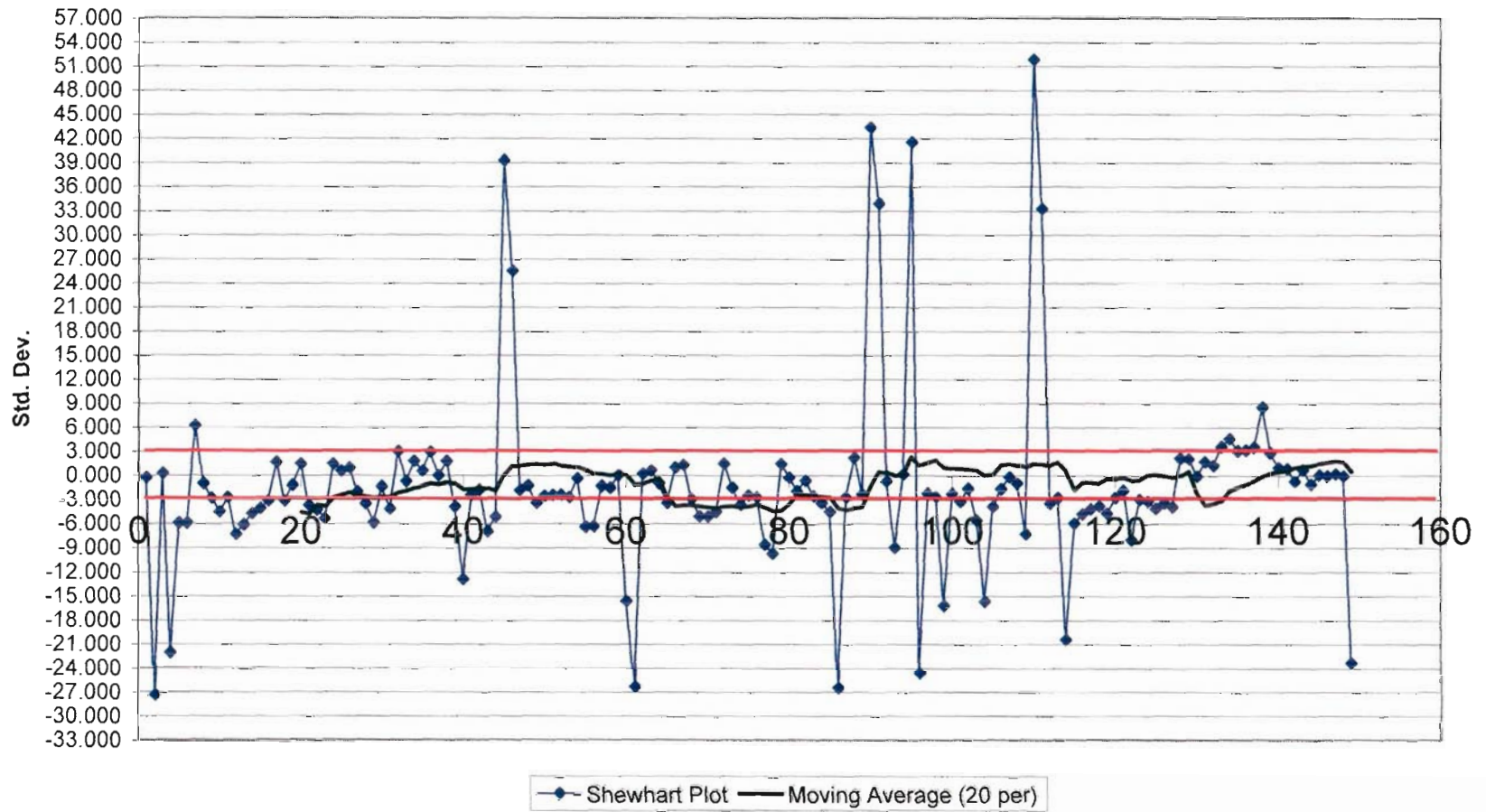
0407-135	Standard #114	202340	4577	70	8.223
0407-135	Standard #114	202280	5851	71	0.396
0407-135	Standard #114	202240	4579	72	3.946
0407-135	Standard #114	202120	5156	73	0.131
0407-137	Standard #114	202420	4536	74	-0.140
0407-137	Standard #114	806540	4492	75	0.383
0407-137	Standard #114	806620	4577	76	0.113
0407-137	Standard #114	202380	4533	77	-11.844
0407-137	Standard #114	202440	2590	78	-12.084
0407-137	Standard #114	202400	2551	79	-17.229
0407-138	Standard #114	301400	1715	80	-1.654
0407-138	Standard #114	301460	4246	81	-16.958
0407-138	Standard #114	301440	1759	82	-1.420
0407-138	Standard #114	301380	4284	83	-3.500
0407-139	Standard #114	806740	3946	84	0.870
0407-139	Standard #114	806840	4656	85	0.691
0407-139	Standard #114	806780	4627	86	0.014
0407-140	Standard #114	209640	4517	87	-2.921
0407-140	Standard #114	209660	4061	88	-1.869
0407-140	Standard #114	209720	4040	89	-6.669
0407-141	Standard #114	209960	4211	90	-1.001
0407-141	Standard #114	209880	3431	91	-1.001
0407-141	Standard #114	209840	4352	92	-1.044
0407-141	Standard #114	415540	4345	93	-3.703
0407-141	Standard #114	209980	3913	94	-0.964
0407-141	Standard #114	209940	4358	95	-0.441
0407-142	Standard #114	415620	4443	96	-1.543
0407-143	Standard #114	415780	4264	97	-0.847
0407-143	Standard #114	415840	4377	98	1.343
0407-143	Standard #114	415880	4733	99	-0.380
0407-143	Standard #114	415740	4453	100	-3.654
0407-143	Standard #114	415860	3921	101	-1.838
0407-144	Standard #114	415940	4216	102	0.205
0407-144	Standard #114	415960	4548	103	-5.949
0407-144	Standard #114	415900	3548	104	-0.127
0407-145	Standard #114	806860	4494	105	-0.570
0407-145	Standard #114	806880	4422	106	-2.663
0407-145	Standard #114	806900	4082	107	-4.509
0407-145	Standard #114	806940	3782	108	-0.306
0407-145	Standard #114	806960	4465	109	4.045

0407-146	Standard #114	416440	5172	110	-1.075
0407-148	Standard #114	368780	4340	111	-2.343
0407-148	Standard #114	368740	4134	112	6.180
0407-149	Standard #114	368620	5519	113	9.183
0407-149	Standard #114	368540	6007	114	-8.472
0407-149	Standard #114	368580	3138 reassay	115	-0.687
0407-150	Standard #114	368940	4403	116	-4.521
0407-150	Standard #114	368860	3780	117	-2.737
0407-150	Standard #114	368880	4070	118	-0.607
0407-150	Standard #114	368900	4416	119	-1.697
0407-150	Standard #114	368840	4239	120	0.199
0407-150	Standard #114	368960	4547	121	0.870
0407-151B	Standard #114	416140	4656	122	-0.866
0407-151B	Standard #114	416160	4374	123	-0.601
0407-151B	Standard #114	416180	4417	124	-6.940
0407-151B	Standard #114	416240	3387	125	1.325
0407-151B	Standard #114	416280	4730	126	0.562
0407-152	Standard #114	369160	4606	127	0.340
0407-152	Standard #114	369140	4570	128	3.750
0407-152	Standard #114	369240	5124 re-assay	129	2.513
0407-153	Standard #114	369280	4923	130	5.479
0407-154	Standard #114	419620	5405	131	-1.303
0407-154	Standard #114	369440	4303	132	-9.174
0407-154	Standard #114	369460	3024	133	-10.897
0407-154	Standard #114	369480	2744	134	-4.134
0407-155	Standard #114	419740	3843	135	-0.060
0407-156	Standard #114	419860	4505	136	1.146
0407-156	Standard #114	419880	4701	137	-1.487
0407-156	Standard #114	419900	4273	138	-1.666
0407-156	Standard #114	419940	4244	139	-0.361
0407-156	Standard #114	419960	4456	140	1.386
0407-156	Standard #114	362040	4740	141	-12.490
0407-156	Standard #114	419840	2485	142	2.580
0407-157	Standard #114	362120	4934	143	1.657
0407-158	Standard #114	362240	4784	144	-2.700
0407-159	Standard #114	362360	4076	145	-2.072
0407-159	Standard #114	362280	4178	146	-1.235
0407-159	Standard #114	362340	4314	147	2.359
0407-160	Standard #114	362400	4898	148	-0.792
0407-160	Standard #114	362460	4386	149	-14.478

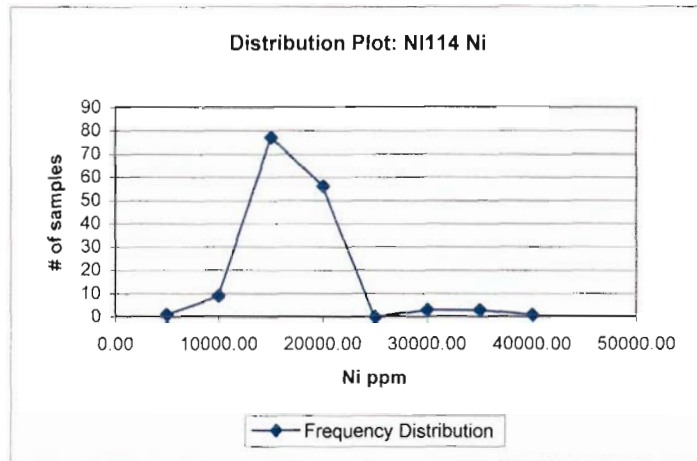
0407-160	Standard #114	445040	2162	150	2.703
0407-160	Standard #114	362380	4954	151	-2.207
0407-160	Standard #114	362440	4156	152	-0.146
0407-161	Standard #114	445120	4491	153	-5.081
0407-99	Standard #114	204040	3689		

Standard NI114 SXY-Ni  
January, 2008

Shewhart Graph: NI114 SXY- Ni



Certified		Measured	
Element	Ni	Count	148.00
Unit	ppm	Average	14817.42
QC ID	SXY	Std Dev	4301.37
Conc	15,519.3	Bias	-701.88
St Dev	394.1	Min	4724.00
Conf		Max	32611.00
N			



Frequency distribution

Bin	Frequency
0	1
5000.00	9
10000.00	77
15000.00	56
20000.00	0
25000.00	3
30000.00	3
35000.00	1
40000.00	1
150	

### Online LIMS QC record

Standard Id            SXY  
 Qc Type                Standard  
 Comment  
 Chemist                WCM Minerals  
 Create Tm

Update Tm

No. Standards

No. Records

Hole	Tag	Sample #	Ni FA Ni ppm	Count Average s	150 15519.300 394.1000
				1	-0.227
				2	-27.392
				3	0.263
				4	-22.010
				5	-5.865
				6	-5.893
				7	6.206
				8	-0.957
				9	-2.764
				10	-4.495
				11	-2.683
				12	-7.298
				13	-6.096
				14	-4.718
				15	-4.116
				16	-3.117
				17	1.725
				18	-3.089
				19	-1.178
				20	1.440
				21	-3.662
				22	-4.248
				23	-5.319
				24	1.438
				25	0.575
				26	0.976
				27	-1.988
				28	-3.492
				29	-5.824



0407-118	Standard #114	208840	13224	30	-1.310
0407-118	Standard #114	209000	15003	31	-4.155
0407-118	Standard #114	208820	13882	32	3.037
0407-120	Standard #114	205040	16716	33	-0.706
0407-121	Standard #114	206240	15241	34	1.859
0407-121	Standard #114	206160	16252	35	0.598
0407-121	Standard #114	206260	15755	36	2.978
0407-121	Standard #114	206180	16693	37	#VALUE!
0407-122	Standard #114	205220	>10000	38	1.862
0407-122	Standard #114	205160	16253	39	-3.845
0407-123	Standard #114	205680	14004	40	-12.893
0407-124A	Standard #114	209060	10438	41	-2.358
0407-124A	Standard #114	209180	14590	42	-1.744
0407-124A	Standard #114	209120	14832	43	-6.880
0407-124A	Standard #114	209100	12808	44	-5.121
0407-124A	Standard #114	209260	13501 re-assay	45	39.289
0407-125	Standard #114	205580	31003	46	25.533
0407-125	Standard #114	205560	25582	47	-1.769
0407-127	Standard #114	205700	14822	48	-1.216
0407-127	Standard #114	205880	15040	49	-3.343
0407-127	Standard #114	205780	14202	50	-2.444
0407-127	Standard #114	205820	14556	51	-2.338
0407-129	Standard #114	206860	14598	52	-2.353
0407-129	Standard #114	206940	14592	53	-2.617
0407-130	Standard #114	206740	14488	54	-0.320
0407-130	Standard #114	206500	15393	55	-6.309
0407-130	Standard #114	206560	13033	56	-6.273
0407-130	Standard #114	206680	13047	57	-1.249
0407-131	Standard #114	301120	15027	58	-1.462
0407-131	Standard #114	209520	14943	59	0.065
0407-131	Standard #114	301040	15545	60	-15.614
0407-132	Standard #114	301360	9366	61	-26.309
0407-132	Standard #114	301340	5151	62	0.250
0407-132	Standard #114	301240	15618	63	0.651
0407-133	Standard #114	301660	15776	64	-0.942
0407-133	Standard #114	301680	15148	65	-3.378
0407-133	Standard #114	301640	14188	66	1.070
0407-134	Standard #114	301740	15941	67	1.390
0407-134	Standard #114	301780	16067	68	-2.866
0407-135	Standard #114	202360	14390	69	-5.078

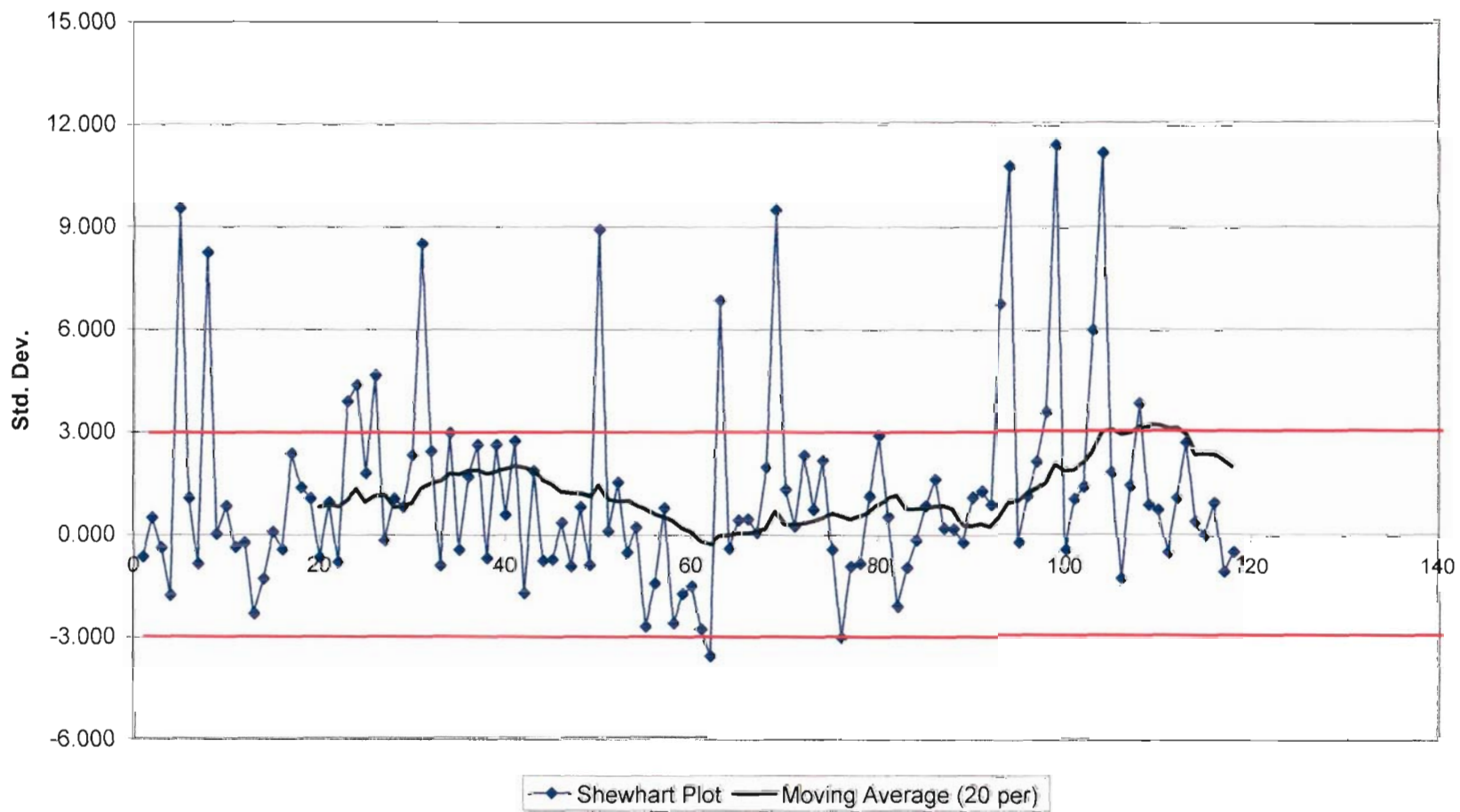
0407-135	Standard #114	202340	13518	70	-5.073
0407-135	Standard #114	202280	13520	71	-4.505
0407-135	Standard #114	202240	13744	72	1.496
0407-135	Standard #114	202120	16109	73	-1.490
0407-137	Standard #114	202420	14932	74	-3.601
0407-137	Standard #114	806540	14100	75	-2.411
0407-137	Standard #114	806620	14569	76	-2.696
0407-137	Standard #114	202380	14457	77	-8.587
0407-137	Standard #114	202440	12135	78	-9.691
0407-137	Standard #114	202400	11700	79	1.473
0407-138	Standard #114	301400	16100	80	-0.285
0407-138	Standard #114	301460	15407	81	-1.932
0407-138	Standard #114	301440	14758	82	-0.648
0407-138	Standard #114	301380	15264	83	-2.523
0407-139	Standard #114	806740	14525	84	-3.424
0407-139	Standard #114	806840	14170	85	-4.525
0407-139	Standard #114	806780	13736	86	-26.481
0407-140	Standard #114	209640	5083	87	-2.660
0407-140	Standard #114	209660	14471	88	2.252
0407-140	Standard #114	209720	16407	89	-2.307
0407-141	Standard #114	209960	14610	90	43.369
0407-141	Standard #114	209880	32611	91	33.920
0407-141	Standard #114	209840	28887	92	-0.726
0407-141	Standard #114	415540	15233	93	-8.981
0407-141	Standard #114	209980	11980	94	0.139
0407-141	Standard #114	209940	15574	95	41.529
0407-142	Standard #114	415620	31886	96	-24.611
0407-143	Standard #114	415780	5820	97	-2.229
0407-143	Standard #114	415840	14641	98	-2.581
0407-143	Standard #114	415880	14502	99	-16.179
0407-143	Standard #114	415740	9143	100	-2.229
0407-143	Standard #114	415860	14641	101	-3.256
0407-144	Standard #114	415940	14236	102	-1.615
0407-144	Standard #114	415960	14883	103	-5.568
0407-144	Standard #114	415900	13325	104	-15.652
0407-145	Standard #114	806860	9351	105	-3.848
0407-145	Standard #114	806880	14003	106	-1.655
0407-145	Standard #114	806900	14867	107	-0.186
0407-145	Standard #114	806940	15446	108	-1.008
0407-145	Standard #114	806960	15122	109	-7.240

0407-146	Standard #114	416440	12666	110	51.852
0407-148	Standard #114	368780	35954	111	33.260
0407-148	Standard #114	368740	28627	112	-3.421
0407-149	Standard #114	368620	14171	113	-2.746
0407-149	Standard #114	368540	14437	114	-20.435
0407-150	Standard #114	368940	7466	115	-5.936
0407-150	Standard #114	368860	13180	116	-4.758
0407-150	Standard #114	368880	13644	117	-4.165
0407-150	Standard #114	368900	13878	118	-3.784
0407-150	Standard #114	368840	14028	119	-4.687
0407-150	Standard #114	368960	13672	120	-2.713
0407-151B	Standard #114	416140	14450	121	-1.878
0407-151B	Standard #114	416160	14779	122	-7.996
0407-151B	Standard #114	416180	12368	123	-2.962
0407-151B	Standard #114	416240	14352	124	-3.155
0407-151B	Standard #114	416280	14276	125	-4.122
0407-152	Standard #114	369160	13895	126	-3.429
0407-152	Standard #114	369140	14168	127	-3.888
0407-153	Standard #114	369280	13987	128	2.230
0407-154	Standard #114	419620	16398	129	2.055
0407-154	Standard #114	369440	16329	130	-0.107
0407-154	Standard #114	369460	15477	131	1.737
0407-154	Standard #114	369480	16204	132	1.268
0407-155	Standard #114	419740	16019	133	3.595
0407-156	Standard #114	419860	16936	134	4.544
0407-156	Standard #114	419880	17310	135	3.064
0407-156	Standard #114	419900	16727	136	3.179
0407-156	Standard #114	419940	16772	137	3.529
0407-156	Standard #114	419960	16910	138	8.502
0407-156	Standard #114	362040	18870	139	2.823
0407-156	Standard #114	419840	16632	140	0.994
0407-157	Standard #114	362120	15911	141	0.854
0407-158	Standard #114	362240	15856	142	-0.795
0407-159	Standard #114	362360	15206	143	0.707
0407-159	Standard #114	362280	15798	144	-1.112
0407-159	Standard #114	362340	15081	145	0.040
0407-160	Standard #114	362400	15535	146	-0.059
0407-160	Standard #114	362460	15496	147	0.179
0407-160	Standard #114	445040	15590	148	-0.074
0407-160	Standard #114	362380	15490	149	-23.335

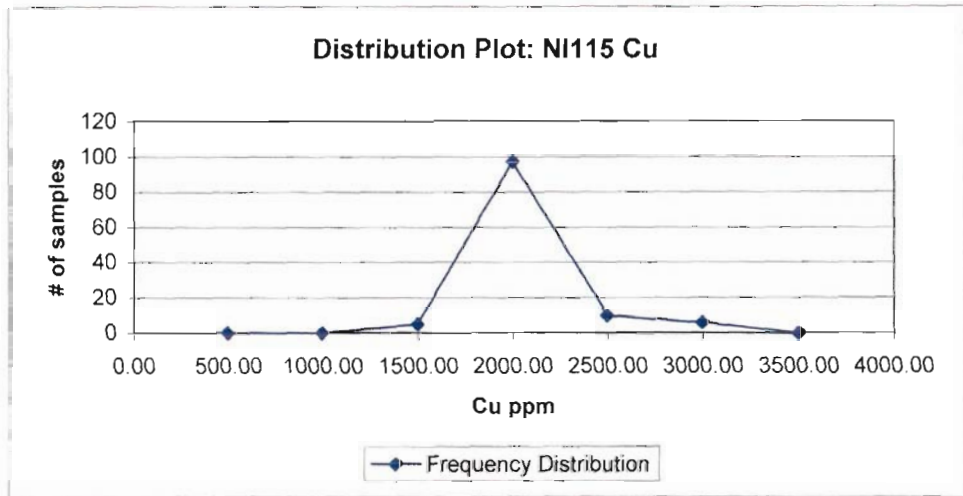
0407-160	Standard #114	362440	6323	150	-1.932
0407-161	Standard #114	445120	14758	151	-1.942
0407-99	Standard #114	204040	14754		

Standard NI115 SXY-Copper  
January, 2008

Shewhart Graph: NI115 SXY- Cu



Certified		Measured	
Element	Copper	Count	111.00
Unit	ppm	Average	1828.69
QC ID	SXY	Std Dev	275.91
Conc	1,714.7	Bias	113.99
St Dev	91.3	Min	1391.00
Conf		Max	2752.00
N			



**Calculations**

Frequency distribution		
Bin		Frequency
0	500.00	0
500.00	1000.00	0
1000.00	1500.00	5
1500.00	2000.00	97
2000.00	2500.00	10
2500.00	3000.00	6
3000.00	3500.00	0
		118

**Online LIMS QC record**

Standard Id            SXY  
 Qc Type                Standard  
 Comment  
 Chemist                WCM Minerals

Create Tm  
Update Tm

No. Standards  
No. Records

Hole	Tag	Sample #	Cu FA Copper ppm	Count	Average s
					118
					1714.700
					91.3000
				1	-0.654
				2	0.496
0405-47	Standard #115	202020	1655	3	-0.380
0406-49	Standard #115	205920	1760	4	-1.782
0406-97	Standard #115	209620	1680	5	9.532
0407-100	Standard #115	204060	1552	6	1.066
0407-101	Standard #115	204080	2585	7	-0.851
0407-101	Standard #115	204300	1812	8	8.240
0407-101	Standard #115	204200	1637	9	0.014
0407-102	Standard #115	204320	2467	10	0.836
0407-102	Standard #115	204600	1716	11	-0.369
0407-103	Standard #115	207020	1791	12	-0.238
0407-104	Standard #115	207080	1681	13	-2.308
0407-104	Standard #115	207100	1693	14	-1.300
0407-105	Standard #115	207140	1504	15	0.080
0407-105	Standard #115	207180	1596	16	-0.435
0407-105	Standard #115	207220	1722	17	2.369
0407-105	Standard #115	207240	1675	18	1.361
0407-106	Standard #115	207500	1931	19	1.055
0407-106	Standard #115	207360	1839	20	-0.665
0407-106	Standard #115	207380	1811	21	0.945
0407-106	Standard #115	207420	1654	22	-0.807
0407-106	Standard #115	208740	1801	23	3.903
0407-107	Standard #115	207520	1641	24	4.384
0407-107	Standard #115	207540	2071	25	1.789
0407-107	Standard #115	207560	2115	26	4.647
0407-107	Standard #115	207580	1878	27	-0.172
0407-107	Standard #115	207720	2139	28	1.044
0407-107	Standard #115	207740	1699		

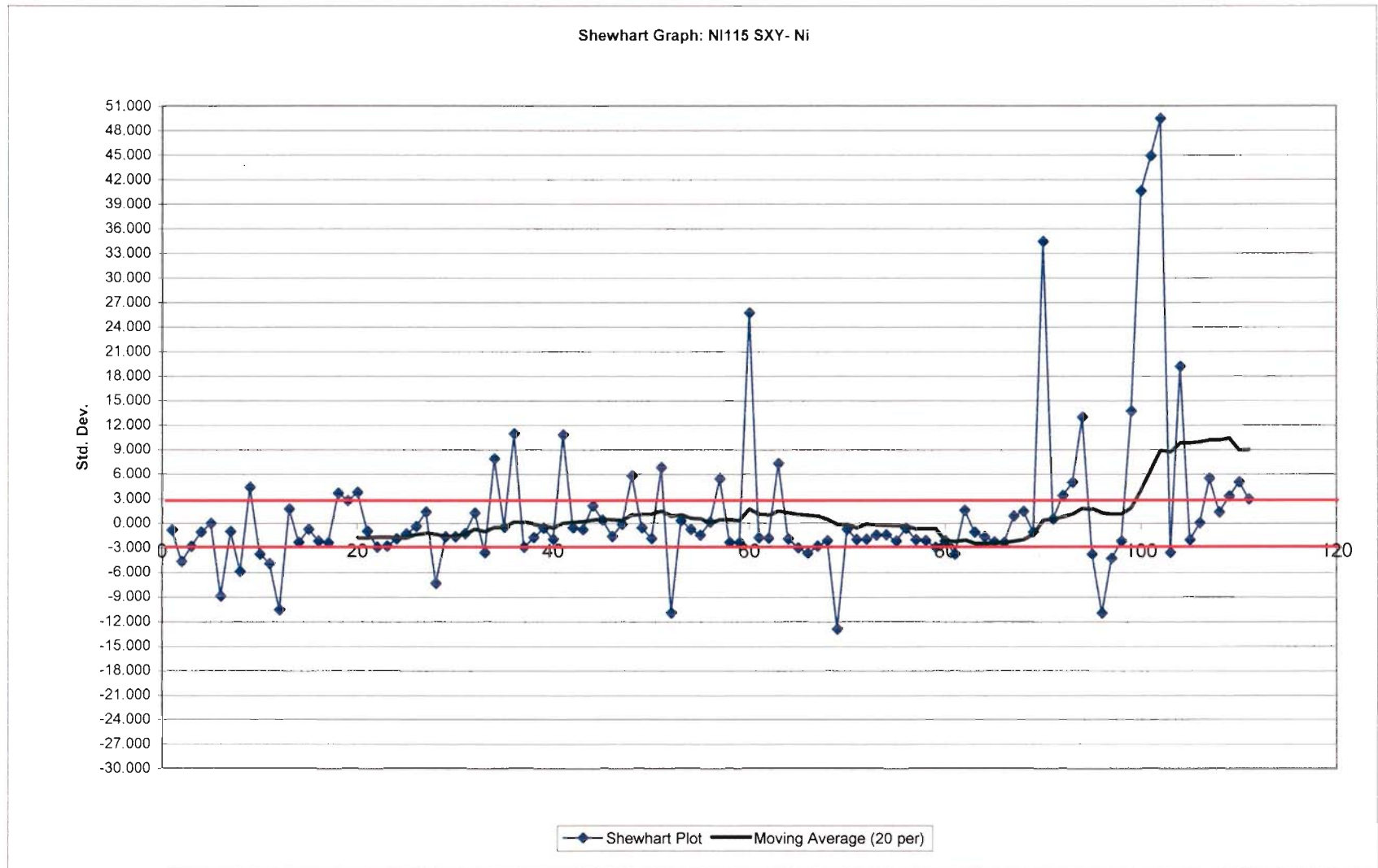
0407-107	Standard #115	207640	1810	29	0.814
0407-111	Standard #115	207760	1789	30	2.325
0407-112	Standard #115	207800	1927	31	8.503
0407-113	Standard #115	208140	2491	32	2.435
0407-113	Standard #115	208080	1937	33	-0.906
0407-114	Standard #115	204920	1632	34	2.972
0407-115	Standard #115	208000	1986	35	-0.446
0407-115	Standard #115	207880	1674	36	1.690
0407-115	Standard #115	208040	1869	37	2.621
0407-116	Standard #115	208280	1954	38	-0.687
0407-116	Standard #115	208300	1652	39	2.621
0407-116	Standard #115	208400	1954	40	0.584
0407-117A	Standard #115	208500	1768	41	2.731
0407-117A	Standard #115	208560	1964	42	-1.716
0407-117A	Standard #115	208680	1558	43	1.854
0407-117A	Standard #115	208660	1884	44	-0.763
0407-118	Standard #115	208900	1645	45	-0.731
0407-118	Standard #115	208940	1648	46	0.354
0407-118	Standard #115	209020	1747	47	-0.928
0407-118	Standard #115	209040	1630	48	0.814
0407-120	Standard #115	205100	1789	49	-0.884
0407-120	Standard #115	205120	1634	50	8.908
0407-120	Standard #115	205060	2528	51	0.102
0407-120	Standard #115	205020	1724	52	1.526
0407-120	Standard #115	205080	1854	53	-0.522
0407-121	Standard #115	206140	1667	54	0.211
0407-122	Standard #115	205240	1734	55	-2.680
0407-122	Standard #115	205280	1470	56	-1.432
0407-122	Standard #115	205180	1584	57	0.792
0407-122	Standard #115	205140	1787	58	-2.582
0407-123	Standard #115	205600	1479	59	-1.727
0407-125	Standard #115	205380	1557	60	-1.508
0407-125	Standard #115	205540	1577	61	-2.768
0407-125	Standard #115	205440	1462	62	-3.545
0407-125	Standard #115	205400	1391	63	6.849
0407-125	Standard #115	205520	2340	64	-0.402
0407-126	Standard #115	206060	1678	65	0.430
0407-126	Standard #115	206020	1754	66	0.463
0407-129	Standard #115	209360	1757	67	0.069
0407-129	Standard #115	209420	1721	68	1.964



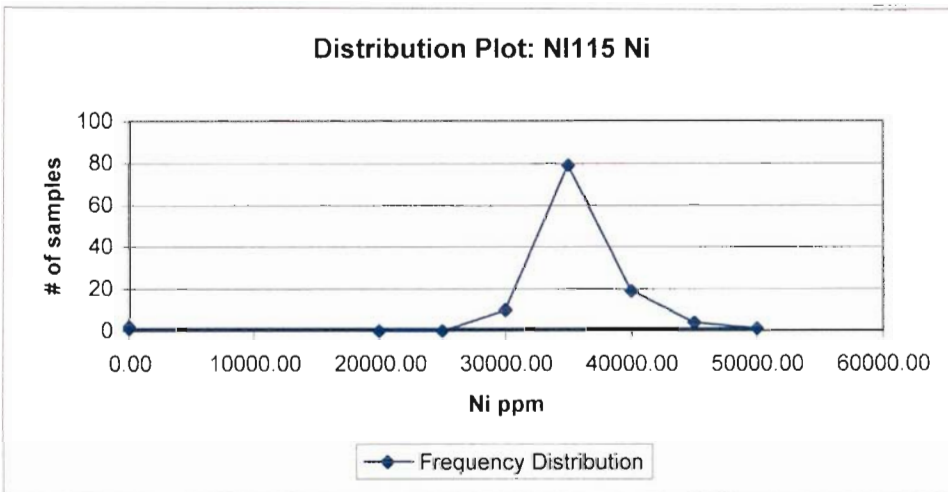
0407-129	Standard #115	206780	1894	69	9.488
0407-129	Standard #115	206980	2581	70	1.318
0407-129	Standard #115	206880	1835	71	0.255
0407-130	Standard #115	206660	1738	72	2.325
0407-130	Standard #115	206700	1927	73	0.748
0407-131	Standard #115	301020	1783	74	2.172
0407-131	Standard #115	301060	1913	75	-0.435
0407-131	Standard #115	301200	1675	76	-3.009
0407-131	Standard #115	209500	1440	77	-0.928
0407-132	Standard #115	301300	1630	78	-0.840
0407-133	Standard #115	301600	1638	79	1.131
0407-134	Standard #115	301920	1818	80	2.895
0407-135	Standard #115	202320	1979	81	0.529
0407-135	Standard #115	202200	1763	82	-2.100
0407-136	Standard #115	202060	1523	83	-0.961
0407-137	Standard #115	806520	1627	84	-0.150
0407-137	Standard #115	806560	1701	85	0.858
0407-139	Standard #115	806820	1793	86	1.613
0407-139	Standard #115	806800	1862	87	0.200
0407-139	Standard #115	806700	1733	88	0.179
0407-140	Standard #115	209800	1731	89	-0.227
0407-141	Standard #115	209920	1694	90	1.088
0407-141	Standard #115	209900	1814	91	1.274
0407-141	Standard #115	415560	1831	92	0.890
0407-141	Standard #115	415520	1796	93	6.728
0407-142	Standard #115	415660	2329	94	10.737
0407-142	Standard #115	415580	2695	95	-0.271
0407-143	Standard #115	415800	1690	96	1.099
0407-143	Standard #115	415700	1815	97	2.095
0407-144	Standard #115	416100	1906	98	3.563
0407-147	Standard #115	416500	2040	99	11.361
0407-148	Standard #115	368680	2752	100	-0.479
0407-148	Standard #115	368700	1671	101	1.022
0407-148	Standard #115	368800	1808	102	1.383
0407-148	Standard #115	368820	1841	103	5.962
0407-149	Standard #115	368560	2259	104	11.142
0407-148	Standard #115	368660	2732	105	1.789
0407-152	Standard #115	369100	1878	106	-1.311
0407-154	Standard #115	419560	1595	107	1.416
0407-154	Standard #115	369500	1844	108	3.826

0407-154	Standard #115	419520	2064	109	0.858
0407-155	Standard #115	419700	1793	110	0.704
0407-156	Standard #115	362020	1779	111	-0.555
0407-156	Standard #115	419820	1664	112	1.066
0407-156	Standard #115	419800	1812	113	2.676

Standard NI115 SXY-Ni  
January, 2008



Certified		Measured	
Element	Ni	Count	111.00
Unit	ppm	Average	19870.52
QC ID	SXY	Std Dev	5986.42
Conc	19,011.3	Bias	859.22
St Dev	624.1	Min	10957.00
Conf		Max	49859.00
N			



### Calculations

#### Frequency distribution

Bin		Frequency
0	5000.00	0
5001.00	10000.00	0
10001.00	15000.00	10
150001.00	20000.00	79
20001.00	25000.00	19
25001.00	30000.00	4
30001.00	35000.00	1
35001.00	40000.00	1
40001.00	45000.00	2
45001.00	50000.00	2

118

### Online LIMS QC record

Standard Id                      SXY  
 Qc Type                         Standard  
 Comment  
 Chemist                         WCM Minerals  
 Create Tm

Update Tm

No. Standards

No. Records

Hole	Tag	Sample #	Ni FA Ni ppm	Count Average s	118 19011.300 624.0000
				1	-0.818
				2	-4.653
				3	-2.803
				4	-1.042
				5	0.006
				6	-8.842
				7	-0.972
				8	-5.855
				9	4.411
				10	-3.760
				11	-4.896
				12	-10.553
				13	1.774
				14	-2.323
				15	-0.717
				16	-2.166
				17	-2.337
				18	3.681
				19	2.767
				20	3.788
				21	-0.962
				22	-2.892
				23	-2.758
				24	-1.880
				25	-1.275
				26	-0.387
				27	1.400
				28	-7.299
				29	-1.629

0407-111	Standard #115	207760	17995	30	-1.617
0407-112	Standard #115	207800	18002	31	-1.226
0407-113	Standard #115	208140	18246	32	1.298
0407-113	Standard #115	208080	19821	33	-3.576
0407-114	Standard #115	204920	16780	34	7.913
0407-115	Standard #115	208000	23949	35	-0.476
0407-115	Standard #115	207880	18714	36	10.971
0407-115	Standard #115	208040	25857	37	-2.904
0407-116	Standard #115	208280	17199	38	-1.714
0407-116	Standard #115	208300	17942	39	-0.555
0407-116	Standard #115	208400	18665 re-assay	40	-1.941
0407-117A	Standard #115	208500	17800	41	10.814
0407-117A	Standard #115	208560	25759	42	-0.547
0407-117A	Standard #115	208680	18670	43	-0.744
0407-117A	Standard #115	208660	18547	44	2.145
0407-118	Standard #115	208900	20350	45	0.429
0407-118	Standard #115	208940	19279	46	-1.582
0407-118	Standard #115	209020	18024	47	-0.100
0407-118	Standard #115	209040	18949	48	5.828
0407-120	Standard #115	205100	22648	49	-0.549
0407-120	Standard #115	205120	18669	50	-1.840
0407-120	Standard #115	205060	17863	51	6.825
0407-120	Standard #115	205020	23270	52	-10.920
0407-120	Standard #115	205080	12197	53	0.354
0407-121	Standard #115	206140	19232	54	-0.714
0407-122	Standard #115	205240	18566	55	-1.416
0407-122	Standard #115	205280	18128	56	0.153
0407-122	Standard #115	205180	19107	57	5.463
0407-122	Standard #115	205140	22420	58	-2.329
0407-123	Standard #115	205600	17558	59	-2.315
0407-125	Standard #115	205380	17567	60	25.697
0407-125	Standard #115	205540	35046	61	-1.739
0407-125	Standard #115	205440	17926	62	-1.810
0407-125	Standard #115	205400	17882	63	7.307
0407-125	Standard #115	205520	23571	64	-1.912
0407-126	Standard #115	206060	17818	65	-3.002
0407-126	Standard #115	206020	17138	66	-3.672
0407-129	Standard #115	209360	16720	67	-2.776
0407-129	Standard #115	209420	17279	68	-2.127
0407-129	Standard #115	206780	17684	69	-12.908

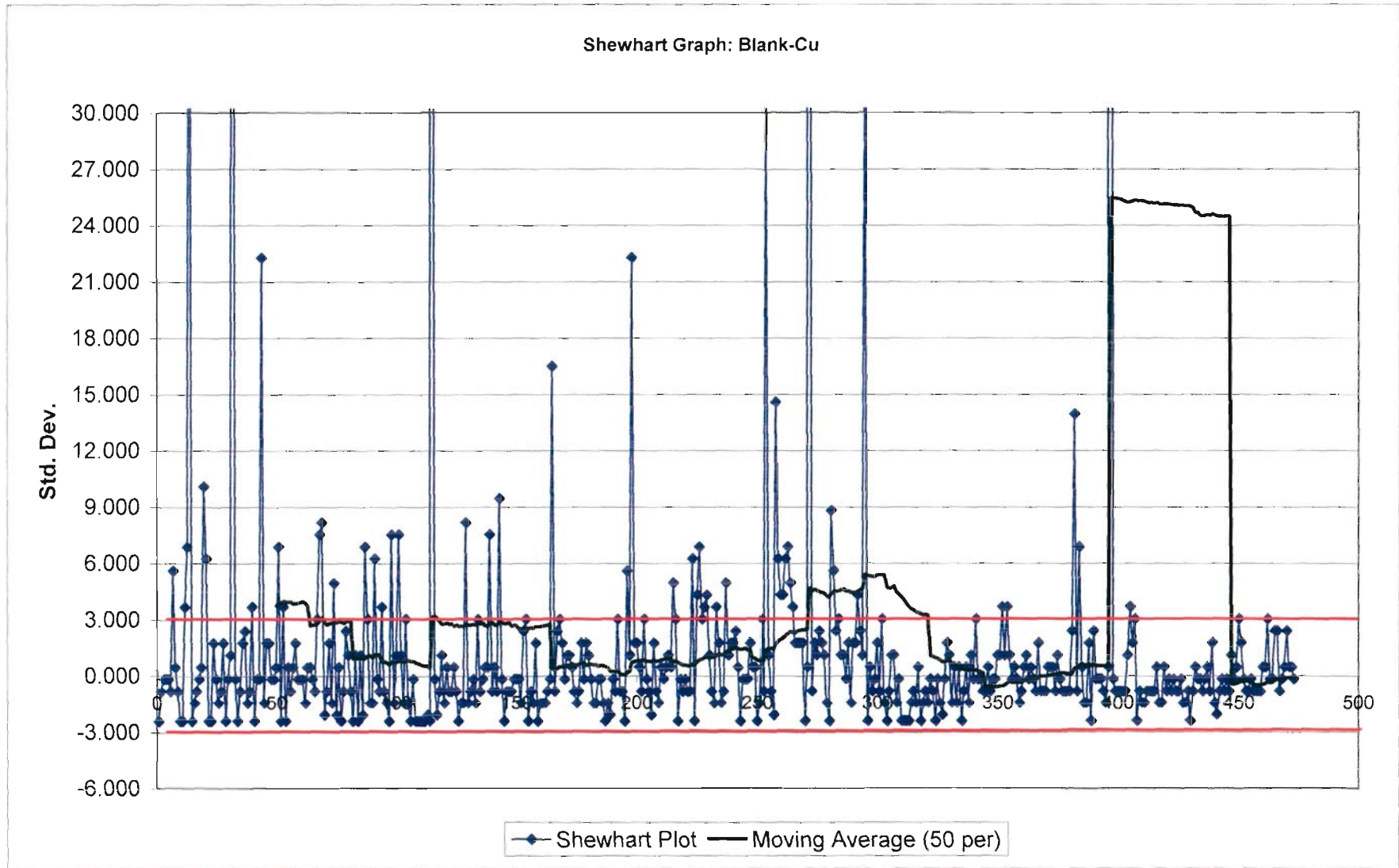
0407-129	Standard #115	206980	10957	70	-0.717
0407-129	Standard #115	206880	18564	71	-1.970
0407-130	Standard #115	206660	17782	72	-1.925
0407-130	Standard #115	206700	17810	73	-1.435
0407-131	Standard #115	301020	18116	74	-1.390
0407-131	Standard #115	301060	18144	75	-2.153
0407-131	Standard #115	301200	17668	76	-0.609
0407-131	Standard #115	209500	18631	77	-2.000
0407-132	Standard #115	301300	17763	78	-2.109
0407-133	Standard #115	301600	17695	79	-2.932
0407-134	Standard #115	301920	17182	80	-2.127
0407-135	Standard #115	202320	17684	81	-3.749
0407-135	Standard #115	202200	16672	82	1.605
0407-136	Standard #115	202060	20013	83	-1.065
0407-137	Standard #115	806520	18347	84	-1.661
0407-137	Standard #115	806560	17975	85	-2.270
0407-139	Standard #115	806820	17595	86	-2.331
0407-139	Standard #115	806800	17557	87	0.911
0407-139	Standard #115	806700	19580	88	1.463
0407-140	Standard #115	209800	19924	89	-1.066
0407-141	Standard #115	209920	18346	90	34.426
0407-141	Standard #115	209900	40493	91	0.509
0407-141	Standard #115	415560	19329	92	3.375
0407-141	Standard #115	415520	21117	93	4.988
0407-142	Standard #115	415660	22124	94	12.945
0407-142	Standard #115	415580	27089	95	-3.773
0407-143	Standard #115	415800	16657	96	-10.956
0407-143	Standard #115	415700	12175	97	-4.311
0407-144	Standard #115	416100	16321	98	-2.199
0407-147	Standard #115	416500	17639	99	13.700
0407-148	Standard #115	368680	27560	100	40.560
0407-148	Standard #115	368700	44321	101	44.889
0407-148	Standard #115	368800	47022	102	49.435
0407-148	Standard #115	368820	49859	103	-3.600
0407-149	Standard #115	368560	16765	104	19.144
0407-148	Standard #115	368660	30957	105	-2.021
0407-152	Standard #115	369100	17750	106	0.056
0407-154	Standard #115	419560	19046	107	5.472
0407-154	Standard #115	369500	22426	108	1.350
0407-154	Standard #115	419520	19854	109	3.285

0407-155	Standard #115	419700	21061	110	5.003
0407-156	Standard #115	362020	22133	111	2.900
0407-156	Standard #115	419820	20821	112	2.722
0407-156	Standard #115	419800	20710	113	-0.042

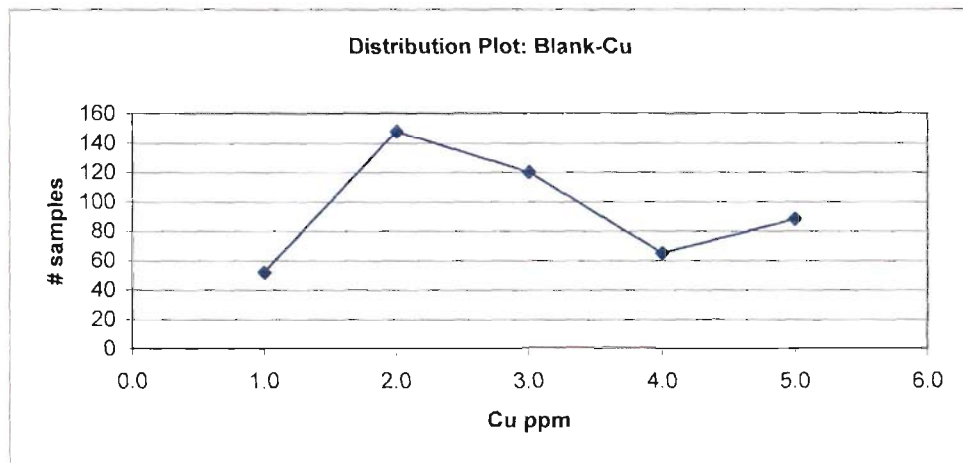


Standard #Blank- Cu

February, 2008



Certified		Measured	
Element	Cu	Count	464
Unit	ppm	Average	10.77
QC ID	Blank	Std Dev	91.53
Conc	4.26	Bias	6.51
St Dev	1.56	Min	0.50
Conf		Max	1948.00
N			



### Calculations

Frequency distribution

Bin		Frequency
0	2.0	52
2.0	4.0	148
4.0	6.0	120
5.0	8.0	65
8.0	10+	88
		473

### Online LIMS QC record

Standard Id            Blank  
 Qc Type                Blank  
 Comment  
 Chemist                ALS CHEMEX

Create Tm  
Update Tm

No. Standards  
No. Records

Hole	Tag	Sample #	Cu FA Cu ppm	Count Average s	473 4.260 1.5600
				1	-2.410
				2	-0.808
				3	-0.167
				4	-0.167
				5	-0.167
				6	-0.808
				7	5.603
				8	0.474
				9	-0.808
				10	-2.410
				11	-2.410
				12	3.679
				13	6.885
				14	53.679
				15	-2.410
				16	-1.449
				17	-0.808
				18	-0.167
				19	0.474
				20	10.090
				21	6.244
				22	-2.410
				23	-2.410
				24	1.756
				25	-0.167
				26	-1.449
				27	-0.808
				28	1.756
0405-47	Blank #	301961	0.5		
0405-47	Blank #	301930	3		
0405-47	Blank #	301990	4		
0405-47	Blank #	202030	4		
0406-48	Blank #	209461	4		
0406-48	Blank #	209490	3		
0406-49	Blank #	205921	13		
0406-50	Blank #	206370	5		
0406-51	Blank #	404090	3		
0406-51	Blank #	19851	0.5		
0406-52	Blank #	196721	0.5		
0406-52	Blank #	403910	10		
0406-52A	Blank #	165541	15		
0406-52A	Blank #	165510	88		
0406-53	Blank #	196541	0.5		
0406-53	Blank #	80078	2		
0406-53	Blank #	108190	3		
0406-54	Blank #	80171	4		
0406-54	Blank #	404061	5		
0406-54	Blank #	196570	20		
0406-55	Blank #	205321	14		
0406-56	Blank #	404001	0.5		
0406-56	Blank #	196601	0.5		
0406-57	Blank #	403761	7		
0406-57	Blank #	403730	4		
0406-58	Blank #	196661	2		
0406-58	Blank #	196690	3		

0406-58	Blank #	403790	7	29	-2.410
0406-58	Blank #	403821	0.5	30	-0.167
0406-59	Blank #	196630	4	31	1.115
0406-59	Blank #	403941	6	32	96.628
0406-59	Blank #	403850	155	33	-0.167
0406-59	Blank #	403881	4	34	-2.410
0406-60	Blank #	76742	0.5	35	-0.808
0406-60	Blank #	403970	3	36	1.756
0406-73	Blank #	108370	7	37	2.397
0406-73	Blank #	108430	8	38	-1.449
0406-75	Blank #	108490	2	39	-0.808
0406-75	Blank #	108550	3	40	3.679
0406-75	Blank #	108581	10	41	-2.410
0406-75	Blank #	108610	0.5	42	-0.167
0406-75	Blank #	108641	4	43	-0.167
0406-75	Blank #	108670	4	44	22.269
0406-75	Blank #	108701	39	45	-1.449
0406-75	Blank #	108730	2	46	1.756
0406-75	Blank #	108761	7	47	1.756
0406-75	Blank #	108461	7	48	-0.167
0406-75	Blank #	108521	4	49	-0.167
0406-76	Blank #	416190	4	50	0.474
0406-76	Blank #	108790	5	51	6.885
0406-77	Blank #	108910	15	52	-2.410
0406-77	Blank #	108850	0.5	53	3.679
0406-77	Blank #	108821	10	54	-2.410
0406-77	Blank #	108881	0.5	55	0.474
0406-77	Blank #	108941	5	56	-0.808
0406-78	Blank #	165601	3	57	0.474
0406-79	Blank #	165721	5	58	1.756
0406-79	Blank #	165661	7	59	-0.167
0406-79	Blank #	165810	4	60	-0.167
0406-79	Blank #	165750	4	61	-0.167
0406-79	Blank #	165690	4	62	-1.449
0406-79	Blank #	165630	2	63	0.474
0406-79	Blank #	165781	5	64	0.474
0406-80	Blank #	165961	5	65	-0.167
0406-80	Blank #	168521	4	66	-0.808
0406-80	Blank #	165990	3	67	3.038
0406-80	Blank #	165901	9	68	7.526

0406-80	Blank #	165841	16	69	8.167
0406-80	Blank #	165870	17	70	-2.090
0406-80	Blank #	165930	1	71	-0.808
0406-81	Blank #	168550	3	72	1.756
0406-81	Blank #	168581	7	73	-1.449
0406-81	Blank #	168610	2	74	4.962
0406-81	Blank #	168641	12	75	-2.090
0406-81	Blank #	168670	1	76	0.474
0406-82	Blank #	196121	5	77	-2.410
0406-82	Blank #	196150	0.5	78	-0.808
0406-82	Blank #	196090	3	79	2.397
0406-82	Blank #	196061	8	80	1.115
0406-82	Blank #	196011	6	81	-0.808
0406-82	Blank #	168701	3	82	-2.410
0406-82	Blank #	191951	0.5	83	1.115
0406-82	Blank #	168730	6	84	-2.410
0406-82	Blank #	196030	0.5	85	1.115
0406-83	Blank #	196510	6	86	-2.090
0406-83	Blank #	196210	1	87	6.885
0406-83	Blank #	196181	15	88	3.038
0406-83	Blank #	196481	9	89	-1.449
0406-83	Blank #	196450	2	90	-1.449
0406-83	Blank #	196241	2	91	6.244
0406-84	Blank #	196410	14	92	-0.167
0406-84	Blank #	196381	4	93	-0.808
0406-85	Blank #	196350	3	94	3.679
0406-85	Blank #	196261	10	95	-0.808
0406-85	Blank #	196290	3	96	-1.449
0406-85	Blank #	196321	2	97	-2.410
0406-86	Blank #	191121	0.5	98	7.526
0406-86	Blank #	191150	16	99	-1.449
0406-86	Blank #	191030	2	100	1.115
0406-86	Blank #	191090	6	101	7.526
0406-86	Blank #	191061	16	102	1.115
0406-87	Blank #	191181	6	103	-1.449
0406-88	Blank #	191210	2	104	3.038
0406-88	Blank #	191241	9	105	-1.449
0406-88	Blank #	191270	2	106	-2.410
0406-88	Blank #	191301	0.5	107	-0.167
0406-97	Blank #	209630	4	108	-2.410

0406-97	Blank #	194050	0.5	109	-2.410
0406-97	Blank #	194081	0.5	110	-2.410
0406-97	Blank #	194110	0.5	111	-2.410
0406-98	Blank #	194170	0.5	112	-2.410
0406-98	Blank #	194321	0.5	113	-2.090
0406-98	Blank #	194290	1	114	-2.410
0406-98	Blank #	194261	0.5	115	137.013
0406-98	Blank #	194201	218	116	-0.167
0406-98	Blank #	194141	4	117	-2.090
0406-98	Blank #	194230	1	118	-0.808
0407-100	Blank #	204061	3	119	1.115
0407-101	Blank #	204181	6	120	-1.449
0407-101	Blank #	204090	2	121	0.474
0407-101	Blank #	204901	5	122	-0.808
0407-101	Blank #	204301	3	123	-0.808
0407-101	Blank #	204270	3	124	0.474
0407-101	Blank #	204241	5	125	-0.808
0407-101	Blank #	204210	3	126	-2.410
0407-101	Blank #	204121	0.5	127	-1.449
0407-101	Blank #	204150	2	128	-1.449
0407-102	Blank #	204450	2	129	8.167
0407-102	Blank #	204570	17	130	-1.449
0407-102	Blank #	204541	2	131	-0.808
0407-102	Blank #	204510	3	132	-0.167
0407-102	Blank #	204481	4	133	-1.449
0407-102	Blank #	204330	2	134	3.038
0407-102	Blank #	204361	9	135	-0.808
0407-102	Blank #	204390	3	136	-0.167
0407-102	Blank #	204421	4	137	0.474
0407-102	Blank #	204601	5	138	0.474
0407-103	Blank #	207030	5	139	7.526
0407-103	Blank #	207001	16	140	-0.808
0407-104	Blank #	207330	3	141	0.474
0407-104	Blank #	207061	5	142	-0.808
0407-104	Blank #	207090	3	143	9.449
0407-104	Blank #	207121	19	144	-0.167
0407-105	Blank #	207270	4	145	-2.410
0407-105	Blank #	207241	0.5 reassay	146	-0.808
0407-105	Blank #	207210	3	147	-0.808
0407-105	Blank #	207181	3	148	-0.808

0407-105	Blank #	207150	3	149	-0.167
0407-105	Blank #	207301	4	150	-0.167
0407-106	Blank #	207361	4	151	-0.167
0407-106	Blank #	207390	4	152	-1.449
0407-106	Blank #	207421	2	153	2.397
0407-106	Blank #	208710	8	154	3.038
0407-106	Blank #	208741	9	155	-2.410
0407-106	Blank #	207450	0.5	156	-0.808
0407-106	Blank #	207481	3	157	-1.449
0407-106	Blank #	207510	2	158	1.756
0407-107	Blank #	207601	7	159	-2.410
0407-107	Blank #	207750	0.5	160	-1.449
0407-107	Blank #	207721	2	161	-1.449
0407-107	Blank #	207690	2	162	-1.449
0407-107	Blank #	207630	2	163	-0.808
0407-107	Blank #	207570	3	164	-0.167
0407-107	Blank #	207661	4	165	16.500
0407-107	Blank #	207541	30	166	-0.808
0407-108	Blank #	204870	3	167	2.397
0407-108	Blank #	204630	8	168	3.038
0407-109	Blank #	204661	9	169	1.756
0407-109	Blank #	204690	7	170	-0.167
0407-110	Blank #	204750	4	171	1.115
0407-110	Blank #	204721	6	172	1.115
0407-110	Blank #	204841	6	173	0.474
0407-110	Blank #	204781	5	174	-0.808
0407-110	Blank #	204810	3	175	-1.449
0407-111	Blank #	207781	2	176	-0.808
0407-112	Blank #	207810	3	177	1.756
0407-112	Blank #	207841	7	178	-0.167
0407-113	Blank #	208110	4	179	1.756
0407-113	Blank #	208081	7	180	1.115
0407-113	Blank #	208261	6	181	-0.167
0407-113	Blank #	208290	4	182	-1.449
0407-113	Blank #	208141	2	183	-1.449
0407-113	Blank #	208170	2	184	-0.167
0407-113	Blank #	208230	4	185	-0.167
0407-113	Blank #	208201	4	186	-1.449
0407-113	Blank #	207870	2	187	-2.410
0407-113A	Blank #	208770	0.5 reassay	188	-1.449

0407-114	Blank #	204930	2	189	-2.090
0407-115	Blank #	208050	1	190	-0.167
0407-115	Blank #	208021	4	191	-0.808
0407-115	Blank #	207990	3	192	3.038
0407-115	Blank #	207961	9	193	-0.808
0407-115	Blank #	207930	3	194	-0.808
0407-115	Blank #	207901	3	195	-2.410
0407-116	Blank #	208381	0.5 reassay	196	5.603
0407-116	Blank #	208321	13	197	1.115
0407-116	Blank #	208410	6	198	22.269
0407-116	Blank #	208350	39	199	1.756
0407-116	Blank #	208441	7	200	1.756
0407-117	Blank #	208801	7	201	0.474
0407-117A	Blank #	208650	5	202	-0.808
0407-117A	Blank #	208621	3	203	3.038
0407-117A	Blank #	208590	9	204	-0.167
0407-117A	Blank #	208561	4	205	-0.808
0407-117A	Blank #	208530	3	206	-2.090
0407-117A	Blank #	208501	1	207	1.756
0407-117A	Blank #	208681	7	208	-0.808
0407-117A	Blank #	208470	3	209	-1.449
0407-118	Blank #	208890	2	210	0.474
0407-118	Blank #	208830	5	211	-0.167
0407-118	Blank #	208950	4	212	0.474
0407-118	Blank #	208981	5	213	1.115
0407-118	Blank #	209010	6	214	0.474
0407-118	Blank #	209041	5	215	4.962
0407-118	Blank #	208921	12	216	3.038
0407-118	Blank #	208861	9	217	-2.410
0407-119	Blank #	204990	0.5	218	-0.167
0407-119	Blank #	204961	4	219	-0.808
0407-120	Blank #	205110	3	220	-0.167
0407-120	Blank #	205081	4	221	-0.808
0407-120	Blank #	205050	3	222	-0.808
0407-120	Blank #	205021	3	223	6.244
0407-121	Blank #	206161	14	224	-2.410
0407-121	Blank #	206190	0.5	225	4.321
0407-121	Blank #	206221	11	226	6.885
0407-121	Blank #	206310	15	227	3.038
0407-121	Blank #	206341	9	228	3.679



0407-121	Blank #	206250	10	229	4.321
0407-121	Blank #	206281	11	230	1.115
0407-122	Blank #	205141	6	231	-0.808
0407-122	Blank #	205201	3	232	-1.449
0407-122	Blank #	205230	2	233	3.679
0407-122	Blank #	205261	10	234	1.756
0407-122	Blank #	205290	7	235	-1.449
0407-122	Blank #	205170	2	236	-0.808
0407-123	Blank #	209341	3	237	4.962
0407-123	Blank #	205621	12	238	1.115
0407-123	Blank #	205650	6	239	1.756
0407-123	Blank #	205681	7	240	1.756
0407-124A	Blank #	209101	7	241	2.397
0407-124A	Blank #	209281	8	242	0.474
0407-124A	Blank #	209070	5	243	-2.410
0407-124A	Blank #	209250	0.5	244	-0.167
0407-124A	Blank #	209221	4	245	-0.167
0407-124A	Blank #	209190	4	246	-0.167
0407-124A	Blank #	209161	4	247	1.756
0407-124A	Blank #	209310	7	248	0.474
0407-124A	Blank #	209130	5	249	0.474
0407-125	Blank #	205590	5	250	-2.410
0407-125	Blank #	205381	0.5	251	-1.449
0407-125	Blank #	205410	2	252	3.038
0407-125	Blank #	205441	9	253	-0.808
0407-125	Blank #	205470	3	254	30.603
0407-125	Blank #	205501	52	255	1.115
0407-125	Blank #	205561	6	256	-0.808
0407-125	Blank #	205530	3	257	-2.090
0407-125	Blank #	205350	1	258	14.577
0407-125	Blank #	205500	27	259	6.244
0407-126	Blank #	206101	14	260	4.321
0407-126	Blank #	206010	11	261	4.321
0407-126	Blank #	206041	11	262	6.244
0407-126	Blank #	205950	14	263	6.885
0407-126	Blank #	205981	15	264	4.962
0407-126	Blank #	206130	12	265	3.679
0407-126	Blank #	206070	10	266	1.756
0407-127	Blank #	205861	7	267	1.756
0407-127	Blank #	205770	7	268	1.756

0407-127	Blank #	205801	7	269	1.756
0407-127	Blank #	205741	7	270	-2.410
0407-127	Blank #	205830	0.5	271	0.474
0407-127	Blank #	205710	5	272	109.449
0407-127	Blank #	205890	175	273	-0.808
0407-128	Blank #	206490	3	274	1.756
0407-128	Blank #	206461	7	275	1.115
0407-128	Blank #	206430	6	276	2.397
0407-128	Blank #	206401	8	277	1.756
0407-129	Blank #	206761	7	278	1.115
0407-129	Blank #	209430	6	279	-1.449
0407-129	Blank #	209370	2	280	-2.410
0407-129	Blank #	206970	0.5	281	8.808
0407-129	Blank #	206941	18	282	5.603
0407-129	Blank #	206910	13	283	2.397
0407-129	Blank #	206881	8	284	3.038
0407-129	Blank #	206850	9	285	1.115
0407-129	Blank #	206821	6	286	1.115
0407-129	Blank #	206790	6	287	-0.167
0407-129	Blank #	209401	4	288	1.756
0407-130	Blank #	206521	7	289	-1.449
0407-130	Blank #	206730	2	290	1.756
0407-130	Blank #	206701	7	291	1.756
0407-130	Blank #	206670	7	292	4.321
0407-130	Blank #	206641	11	293	2.397
0407-130	Blank #	206610	8	294	1.115
0407-130	Blank #	206550	6	295	37.013
0407-130	Blank #	206581	62	296	-2.410
0407-131	Blank #	301030	0.5	297	0.474
0407-131	Blank #	209521	5	298	-0.808
0407-131	Blank #	209550	3	299	-0.167
0407-131	Blank #	301061	4	300	1.756
0407-131	Blank #	301121	7	301	-0.808
0407-131	Blank #	301150	3	302	3.038
0407-131	Blank #	301181	9	303	-1.449
0407-131	Blank #	301210	2	304	-2.410
0407-131	Blank #	301090	0.5	305	-0.808
0407-132	Blank #	301301	3	306	1.115
0407-132	Blank #	301270	6	307	1.115
0407-132	Blank #	301330	6	308	-1.449

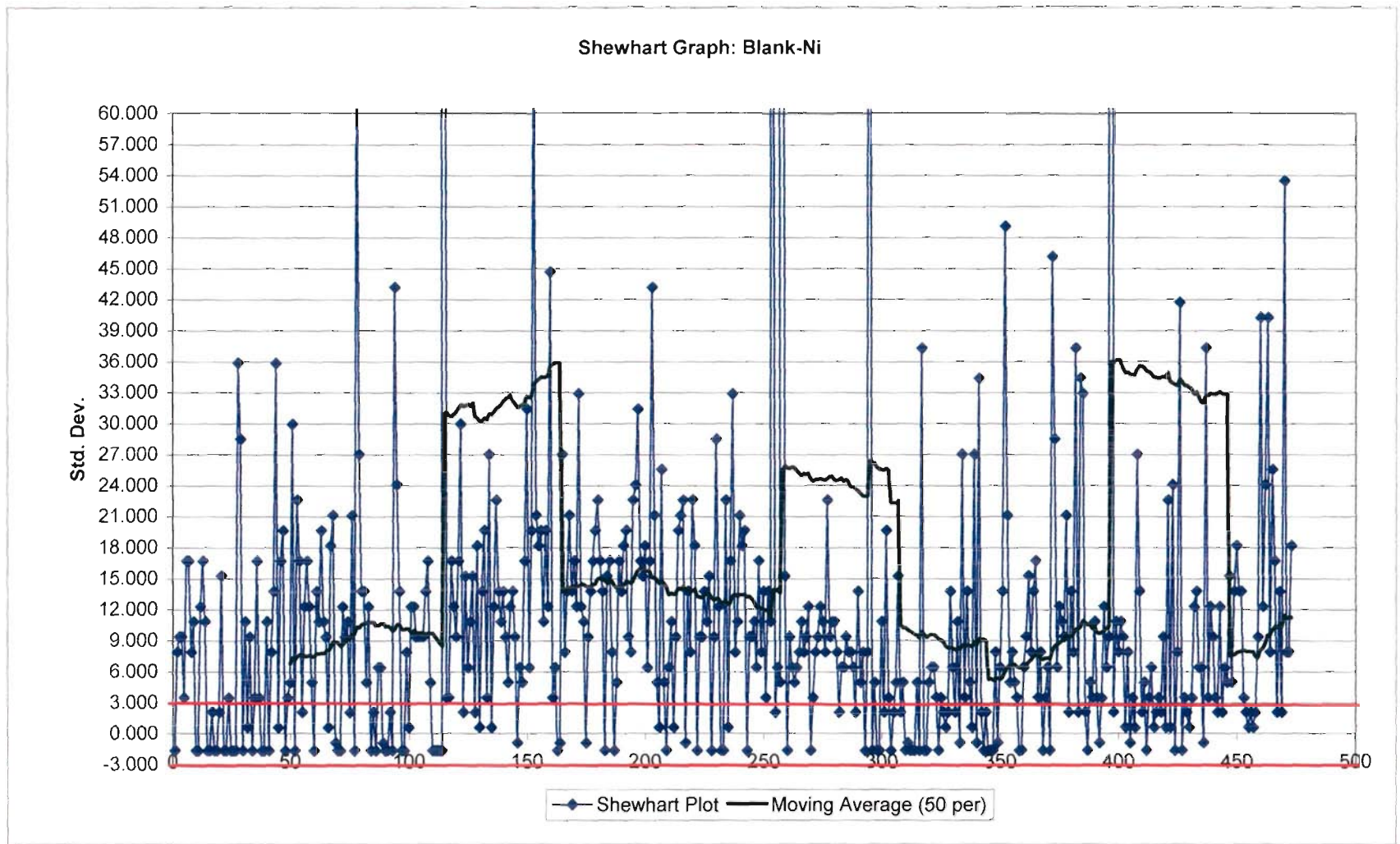
0407-132	Blank #	301361	2	309	-0.167
0407-132	Blank #	301241	4	310	-2.410
0407-132	Blank #	301280	0.5	311	-2.410
0407-132	Blank #	301320	0.5	312	-2.410
0407-133	Blank #	301601	0.5	313	-2.410
0407-133	Blank #	301541	0.5	314	-1.449
0407-133	Blank #	301570	2	315	-0.808
0407-133	Blank #	301510	3	316	-1.449
0407-133	Blank #	301690	2	317	0.474
0407-133	Blank #	301661	5	318	-2.410
0407-133	Blank #	301630	0.5	319	-1.449
0407-134	Blank #	301870	2	320	-0.808
0407-134	Blank #	301721	3	321	-1.449
0407-134	Blank #	301750	2	322	-0.167
0407-134	Blank #	301781	4	323	-0.808
0407-134	Blank #	301810	3	324	-2.410
0407-134	Blank #	301841	0.5	325	-0.167
0407-134	Blank #	301901	4	326	-1.449
0407-135	Blank #	202270	2	327	-2.090
0407-135	Blank #	202181	1	328	-0.167
0407-135	Blank #	202150	4	329	1.756
0407-135	Blank #	202241	7	330	1.115
0407-135	Blank #	202301	6	331	-1.449
0407-135	Blank #	202330	2	332	0.474
0407-135	Blank #	202361	5	333	-1.449
0407-135	Blank #	202121	2	334	0.474
0407-135	Blank #	202210	5	335	-2.410
0407-136	Blank #	202090	0.5	336	-0.808
0407-136	Blank #	202061	3	337	0.474
0407-137	Blank #	806621	5	338	-1.449
0407-137	Blank #	202390	2	339	1.115
0407-137	Blank #	202450	6	340	-0.167
0407-137	Blank #	806650	4	341	3.038
0407-137	Blank #	806530	9	342	-0.167
0407-137	Blank #	806590	4	343	-0.167
0407-137	Blank #	202421	4	344	-0.808
0407-138	Blank #	301390	3	345	-0.808
0407-138	Blank #	301450	3	346	0.474
0407-138	Blank #	301481	5	347	-0.808
0407-138	Blank #	301421	3	348	-0.167

0407-139	Blank #	806770	4	349	-0.167
0407-139	Blank #	806830	4	350	1.115
0407-139	Blank #	806801	6	351	1.115
0407-139	Blank #	806710	6	352	3.679
0407-139	Blank #	806681	10	353	1.115
0407-139	Blank #	806741	6	354	3.679
0407-140	Blank #	209750	10	355	1.115
0407-140	Blank #	209721	6	356	-0.167
0407-140	Blank #	209810	4	357	0.474
0407-140	Blank #	209690	5	358	-0.167
0407-140	Blank #	209661	4	359	-1.449
0407-140	Blank #	209760	2	360	-0.808
0407-140	Blank #	209781	3	361	0.474
0407-141	Blank #	209841	5	362	1.115
0407-141	Blank #	415530	6	363	-0.167
0407-141	Blank #	209990	4	364	0.474
0407-141	Blank #	209961	5	365	-0.167
0407-141	Blank #	209901	4	366	-0.808
0407-141	Blank #	209870	3	367	1.756
0407-141	Blank #	415561	7	368	-0.808
0407-141	Blank #	209930	3	369	-0.808
0407-142	Blank #	415681	3	370	-0.808
0407-142	Blank #	415650	3	371	0.474
0407-142	Blank #	415621	5	372	0.474
0407-142	Blank #	415590	5	373	0.474
0407-143	Blank #	415801	5	374	-0.808
0407-143	Blank #	415830	3	375	1.115
0407-143	Blank #	415861	6	376	-0.167
0407-143	Blank #	415741	4	377	-0.808
0407-143	Blank #	415770	3	378	-0.808
0407-143	Blank #	415710	3	379	-0.808
0407-144	Blank #	416010	3	380	-0.808
0407-144	Blank #	416101	3	381	2.397
0407-144	Blank #	416041	8	382	13.936
0407-144	Blank #	415981	26	383	-0.808
0407-144	Blank #	415950	3	384	6.885
0407-144	Blank #	415890	15	385	0.474
0407-144	Blank #	415921	5	386	-1.449
0407-144	Blank #	416070	2	387	-1.449
0407-145	Blank #	806890	2	388	1.756

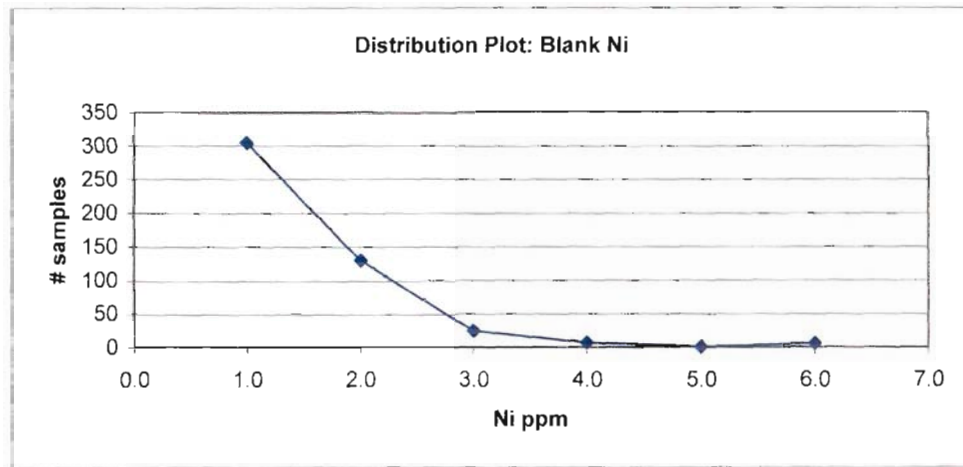
0407-145	Blank #	806981	7	389	-2.410
0407-145	Blank #	806921	0.5	390	2.397
0407-145	Blank #	806861	8	391	-0.167
0407-145	Blank #	806950	4	392	-0.167
0407-146	Blank #	416430	4	393	-0.167
0407-146	Blank #	416461	4	394	-0.808
0407-146	Blank #	416341	3	395	-1.449
0407-146	Blank #	416370	2	396	0.474
0407-147	Blank #	416490	5	397	1245.987
0407-147	Blank #	368520	1948	398	-0.167
0407-148	Blank #	368801	4	399	-0.808
0407-148	Blank #	368650	3	400	-0.808
0407-148	Blank #	368770	3	401	-0.808
0407-148	Blank #	368830	3	402	-0.808
0407-148	Blank #	368741	3	403	-0.808
0407-148	Blank #	368710	3	404	1.115
0407-148	Blank #	368681	6	405	3.679
0407-149	Blank #	368590	10	406	1.756
0407-149	Blank #	368530	7	407	3.038
0407-149	Blank #	368621	9	408	-2.410
0407-149	Blank #	368561	0.5 reassay	409	-0.808
0407-150	Blank #	368981	3	410	-1.449
0407-150	Blank #	368950	2	411	-1.449
0407-150	Blank #	368890	2	412	-0.808
0407-150	Blank #	368861	3	413	-0.808
0407-150	Blank #	369010	3	414	-0.808
0407-151B	Blank #	416281	3	415	-0.808
0407-151B	Blank #	416310	3	416	0.474
0407-151B	Blank #	416250	5	417	-1.449
0407-151B	Blank #	416221	2	418	-1.449
0407-151B	Blank #	416130	2	419	0.474
0407-151B	Blank #	416161	5	420	-0.808
0407-152	Blank #	369070	3	421	-0.167
0407-152	Blank #	369101	4	422	-0.808
0407-152	Blank #	369190	3	423	-0.167
0407-152	Blank #	369130	4	424	-0.808
0407-152	Blank #	369161	3	425	-0.808
0407-152	Blank #	369041	3	426	-0.167
0407-153	Blank #	369281	4	427	-1.449
0407-153	Blank #	369401	2	428	-1.449

0407-153	Blank #	369310	2	429	-0.808
0407-153	Blank #	369341	3	430	-2.410
0407-153	Blank #	369370	0.5	431	-0.808
0407-154	Blank #	369430	3	432	0.474
0407-154	Blank #	369461	5	433	-0.167
0407-154	Blank #	369490	4	434	-0.167
0407-154	Blank #	419530	4	435	-0.808
0407-154	Blank #	419561	3	436	-0.167
0407-154	Blank #	419590	4	437	0.474
0407-154	Blank #	419621	5	438	-0.808
0407-154	Blank #	419650	3	439	1.756
0407-155	Blank #	419681	7	440	-1.449
0407-155	Blank #	419741	2	441	-2.090
0407-155	Blank #	419770	1	442	-0.808
0407-155	Blank #	419710	3	443	-0.167
0407-156	Blank #	419921	4	444	-0.808
0407-156	Blank #	362030	3	445	-0.167
0407-156	Blank #	419950	4	446	-0.808
0407-156	Blank #	419890	3	447	1.115
0407-156	Blank #	419861	6	448	-0.167
0407-156	Blank #	419830	4	449	0.474
0407-156	Blank #	419801	5	450	3.038
0407-156	Blank #	419981	9	451	1.756
0407-157	Blank #	362121	7	452	-0.167
0407-157	Blank #	362061	4	453	-0.808
0407-157	Blank #	362090	3	454	-0.808
0407-157	Blank #	362100	3	455	-0.167
0407-158	Blank #	362241	4	456	-0.808
0407-158	Blank #	362210	3	457	-0.808
0407-158	Blank #	362181	3	458	-0.808
0407-158	Blank #	362150	3	459	-0.808
0407-159	Blank #	362330	3	460	0.474
0407-159	Blank #	362301	5	461	0.474
0407-159	Blank #	362270	5	462	3.038
0407-159	Blank #	362361	9	463	-0.167
0407-160	Blank #	362390	4	464	-0.167
0407-160	Blank #	362421	4	465	2.397
0407-160	Blank #	362450	8	466	2.397
0407-160	Blank #	362481	8	467	-0.808

Standard #Blank- Ni  
February, 2008



Certified		Measured	
Element	Ni	Count	464
Unit	ppm	Average	13.01
QC ID	Blank	Std Dev	57.40
Conc	1.62	Bias	11.39
St Dev	0.68	Min	0.50
Conf		Max	870.00
N			



### Calculations

Frequency distribution

Bin		Frequency
0	10.0	304
11.0	20.0	130
21.0	30.0	25
31.0	40.0	7
41.0	50.0	1
50.0	60+	6
		473

### Online LIMS QC record

Standard Id	Blank
Qc Type	Blank
Comment	
Chemist	ALS CHEMEX



Create Tm  
Update Tm

No. Standards  
No. Records

Hole	Tag	Sample #	Ni FA Ni ppm	Count Average s	473 1.620 0.6800
				1	-1.647
0405-47	Blank #	301961	0.5	2	7.912
0405-47	Blank #	301930	7	3	9.382
0405-47	Blank #	301990	8	4	9.382
0405-47	Blank #	202030	8	5	3.500
0406-48	Blank #	209461	4	6	16.735
0406-48	Blank #	209490	13	7	16.735
0406-49	Blank #	205921	13	8	7.912
0406-50	Blank #	206370	7	9	10.853
0406-51	Blank #	404090	9	10	-1.647
0406-51	Blank #	19851	0.5	11	-1.647
0406-52	Blank #	196721	0.5	12	12.324
0406-52	Blank #	403910	10	13	16.735
0406-52A	Blank #	165541	13	14	10.853
0406-52A	Blank #	165510	9	15	-1.647
0406-53	Blank #	196541	0.5	16	-1.647
0406-53	Blank #	80078	0.5	17	2.029
0406-53	Blank #	108190	3	18	-1.647
0406-54	Blank #	80171	0.5	19	-1.647
0406-54	Blank #	404061	0.5	20	2.029
0406-54	Blank #	196570	3	21	15.265
0406-55	Blank #	205321	12	22	-1.647
0406-56	Blank #	404001	0.5	23	-1.647
0406-56	Blank #	196601	0.5	24	3.500
0406-57	Blank #	403761	4	25	-1.647
0406-57	Blank #	403730	0.5	26	-1.647
0406-58	Blank #	196661	0.5	27	-1.647
0406-58	Blank #	196690	0.5	28	35.853

0406-58	Blank #	403790	26	29	28.500
0406-58	Blank #	403821	21	30	-1.647
0406-59	Blank #	196630	0.5	31	10.853
0406-59	Blank #	403941	9	32	0.559
0406-59	Blank #	403850	2	33	9.382
0406-59	Blank #	403881	8	34	-1.647
0406-60	Blank #	76742	0.5	35	3.500
0406-60	Blank #	403970	4	36	16.735
0406-73	Blank #	108370	13	37	3.500
0406-73	Blank #	108430	4	38	-1.647
0406-75	Blank #	108490	0.5	39	-1.647
0406-75	Blank #	108550	0.5	40	10.853
0406-75	Blank #	108581	9	41	-1.647
0406-75	Blank #	108610	0.5	42	7.912
0406-75	Blank #	108641	7	43	13.794
0406-75	Blank #	108670	11	44	35.853
0406-75	Blank #	108701	26	45	0.559
0406-75	Blank #	108730	2	46	16.735
0406-75	Blank #	108761	13	47	19.676
0406-75	Blank #	108461	15	48	-1.647
0406-75	Blank #	108521	0.5	49	3.500
0406-76	Blank #	416190	4	50	4.971
0406-76	Blank #	108790	5	51	29.971
0406-77	Blank #	108910	22	52	-1.647
0406-77	Blank #	108850	0.5	53	22.618
0406-77	Blank #	108821	17	54	16.735
0406-77	Blank #	108881	13	55	2.029
0406-77	Blank #	108941	3	56	12.324
0406-78	Blank #	165601	10	57	16.735
0406-79	Blank #	165721	13	58	12.324
0406-79	Blank #	165661	10	59	4.971
0406-79	Blank #	165810	5	60	-1.647
0406-79	Blank #	165750	0.5	61	13.794
0406-79	Blank #	165690	11	62	10.853
0406-79	Blank #	165630	9	63	19.676
0406-79	Blank #	165781	15	64	10.853
0406-80	Blank #	165961	9	65	9.382
0406-80	Blank #	168521	8	66	0.559
0406-80	Blank #	165990	2	67	18.206
0406-80	Blank #	165901	14	68	21.147

0406-80	Blank #	165841	16	69	-0.912
0406-80	Blank #	165870	1	70	-1.647
0406-80	Blank #	165930	0.5	71	-1.647
0406-81	Blank #	168550	0.5	72	12.324
0406-81	Blank #	168581	10	73	9.382
0406-81	Blank #	168610	8	74	10.853
0406-81	Blank #	168641	9	75	2.029
0406-81	Blank #	168670	3	76	21.147
0406-82	Blank #	196121	16	77	-1.647
0406-82	Blank #	196150	0.5	78	69.676
0406-82	Blank #	196090	49	79	27.029
0406-82	Blank #	196061	20	80	13.794
0406-82	Blank #	196011	11	81	13.794
0406-82	Blank #	168701	11	82	4.971
0406-82	Blank #	191951	5	83	12.324
0406-82	Blank #	168730	10	84	-1.647
0406-82	Blank #	196030	0.5	85	2.029
0406-83	Blank #	196510	3	86	-1.647
0406-83	Blank #	196210	0.5	87	6.441
0406-83	Blank #	196181	6	88	6.441
0406-83	Blank #	196481	6	89	-0.912
0406-83	Blank #	196450	1	90	-1.647
0406-83	Blank #	196241	0.5	91	-1.647
0406-84	Blank #	196410	0.5	92	2.029
0406-84	Blank #	196381	3	93	-1.647
0406-85	Blank #	196350	0.5	94	43.206
0406-85	Blank #	196261	31	95	24.088
0406-85	Blank #	196290	18	96	13.794
0406-85	Blank #	196321	11	97	-1.647
0406-86	Blank #	191121	0.5	98	-1.647
0406-86	Blank #	191150	0.5	99	7.912
0406-86	Blank #	191030	7	100	0.559
0406-86	Blank #	191090	2	101	12.324
0406-86	Blank #	191061	10	102	12.324
0406-87	Blank #	191181	10	103	9.382
0406-88	Blank #	191210	8	104	9.382
0406-88	Blank #	191241	8	105	9.382
0406-88	Blank #	191270	8	106	9.382
0406-88	Blank #	191301	8	107	13.794
0406-97	Blank #	209630	11	108	16.735

0406-97	Blank #	194050	13	109	4.971
0406-97	Blank #	194081	5	110	-1.647
0406-97	Blank #	194110	0.5	111	-1.647
0406-98	Blank #	194170	0.5	112	-1.647
0406-98	Blank #	194321	0.5	113	-1.647
0406-98	Blank #	194290	0.5	114	-1.647
0406-98	Blank #	194261	0.5	115	1132.912
0406-98	Blank #	194201	772	116	3.500
0406-98	Blank #	194141	4	117	3.500
0406-98	Blank #	194230	4	118	16.735
0407-100	Blank #	204061	13	119	12.324
0407-101	Blank #	204181	10	120	9.382
0407-101	Blank #	204090	8	121	16.735
0407-101	Blank #	204901	13	122	29.971
0407-101	Blank #	204301	22	123	2.029
0407-101	Blank #	204270	3	124	15.265
0407-101	Blank #	204241	12	125	6.441
0407-101	Blank #	204210	6	126	10.853
0407-101	Blank #	204121	9	127	15.265
0407-101	Blank #	204150	12	128	2.029
0407-102	Blank #	204450	3	129	18.206
0407-102	Blank #	204570	14	130	0.559
0407-102	Blank #	204541	2	131	13.794
0407-102	Blank #	204510	11	132	19.676
0407-102	Blank #	204481	15	133	3.500
0407-102	Blank #	204330	4	134	27.029
0407-102	Blank #	204361	20	135	0.559
0407-102	Blank #	204390	2	136	12.324
0407-102	Blank #	204421	10	137	22.618
0407-102	Blank #	204601	17	138	13.794
0407-103	Blank #	207030	11	139	10.853
0407-103	Blank #	207001	9	140	13.794
0407-104	Blank #	207330	11	141	9.382
0407-104	Blank #	207061	8	142	4.971
0407-104	Blank #	207090	5	143	12.324
0407-104	Blank #	207121	10	144	13.794
0407-105	Blank #	207270	11	145	9.382
0407-105	Blank #	207241	8 reassay	146	-0.912
0407-105	Blank #	207210	1	147	6.441
0407-105	Blank #	207181	6	148	4.971

0407-105	Blank #	207150	5	149	16.735
0407-105	Blank #	207301	13	150	31.441
0407-106	Blank #	207361	23	151	6.441
0407-106	Blank #	207390	6	152	19.676
0407-106	Blank #	207421	15	153	71.147
0407-106	Blank #	208710	50	154	21.147
0407-106	Blank #	208741	16	155	18.206
0407-106	Blank #	207450	14	156	19.676
0407-106	Blank #	207481	15	157	10.853
0407-106	Blank #	207510	9	158	19.676
0407-107	Blank #	207601	15	159	12.324
0407-107	Blank #	207750	10	160	44.676
0407-107	Blank #	207721	32	161	3.500
0407-107	Blank #	207690	4	162	6.441
0407-107	Blank #	207630	6	163	-1.647
0407-107	Blank #	207570	0.5	164	-0.912
0407-107	Blank #	207661	1	165	27.029
0407-107	Blank #	207541	20	166	7.912
0407-108	Blank #	204870	7	167	13.794
0407-108	Blank #	204630	11	168	21.147
0407-109	Blank #	204661	16	169	13.794
0407-109	Blank #	204690	11	170	16.735
0407-110	Blank #	204750	13	171	12.324
0407-110	Blank #	204721	10	172	32.912
0407-110	Blank #	204841	24	173	12.324
0407-110	Blank #	204781	10	174	10.853
0407-110	Blank #	204810	9	175	-0.912
0407-111	Blank #	207781	1	176	9.382
0407-112	Blank #	207810	8	177	13.794
0407-112	Blank #	207841	11	178	16.735
0407-113	Blank #	208110	13	179	19.676
0407-113	Blank #	208081	15	180	22.618
0407-113	Blank #	208261	17	181	16.735
0407-113	Blank #	208290	13	182	13.794
0407-113	Blank #	208141	11	183	-1.647
0407-113	Blank #	208170	0.5	184	15.265
0407-113	Blank #	208230	12	185	16.735
0407-113	Blank #	208201	13	186	7.912
0407-113	Blank #	207870	7	187	-1.647
0407-113A	Blank #	208770	0.5	188	4.971

0407-114	Blank #	204930	5	189	16.735
0407-115	Blank #	208050	13	190	13.794
0407-115	Blank #	208021	11	191	18.206
0407-115	Blank #	207990	14	192	19.676
0407-115	Blank #	207961	15	193	9.382
0407-115	Blank #	207930	8	194	7.912
0407-115	Blank #	207901	7	195	22.618
0407-116	Blank #	208381	17	196	24.088
0407-116	Blank #	208321	18	197	31.441
0407-116	Blank #	208410	23	198	16.735
0407-116	Blank #	208350	13	199	15.265
0407-116	Blank #	208441	12	200	18.206
0407-117	Blank #	208801	14	201	6.441
0407-117A	Blank #	208650	6	202	16.735
0407-117A	Blank #	208621	13	203	43.206
0407-117A	Blank #	208590	31	204	21.147
0407-117A	Blank #	208561	16	205	4.971
0407-117A	Blank #	208530	5	206	0.559
0407-117A	Blank #	208501	2	207	25.559
0407-117A	Blank #	208681	19	208	4.971
0407-117A	Blank #	208470	5	209	-1.647
0407-118	Blank #	208890	0.5	210	6.441
0407-118	Blank #	208830	6	211	10.853
0407-118	Blank #	208950	9	212	0.559
0407-118	Blank #	208981	2	213	9.382
0407-118	Blank #	209010	8	214	19.676
0407-118	Blank #	209041	15	215	21.147
0407-118	Blank #	208921	16	216	22.618
0407-118	Blank #	208861	17	217	-0.912
0407-119	Blank #	204990	1	218	13.794
0407-119	Blank #	204961	11	219	7.912
0407-120	Blank #	205110	7	220	22.618
0407-120	Blank #	205081	17	221	18.206
0407-120	Blank #	205050	14	222	-1.647
0407-120	Blank #	205021	0.5	223	9.382
0407-121	Blank #	206161	8	224	9.382
0407-121	Blank #	206190	8	225	13.794
0407-121	Blank #	206221	11	226	10.853
0407-121	Blank #	206310	9	227	15.265
0407-121	Blank #	206341	12	228	-1.647

0407-121	Blank #	206250	0.5	229	9.382
0407-121	Blank #	206281	8	230	28.500
0407-122	Blank #	205141	21	231	12.324
0407-122	Blank #	205201	10	232	-1.647
0407-122	Blank #	205230	0.5	233	-1.647
0407-122	Blank #	205261	0.5	234	22.618
0407-122	Blank #	205290	17	235	0.559
0407-122	Blank #	205170	2	236	16.735
0407-123	Blank #	209341	13	237	32.912
0407-123	Blank #	205621	24	238	7.912
0407-123	Blank #	205650	7	239	10.853
0407-123	Blank #	205681	9	240	21.147
0407-124A	Blank #	209101	16	241	18.206
0407-124A	Blank #	209281	14	242	19.676
0407-124A	Blank #	209070	15	243	-1.647
0407-124A	Blank #	209250	0.5 reassay	244	9.382
0407-124A	Blank #	209221	8	245	9.382
0407-124A	Blank #	209190	8	246	10.853
0407-124A	Blank #	209161	9	247	6.441
0407-124A	Blank #	209310	6	248	16.735
0407-124A	Blank #	209130	13	249	7.912
0407-125	Blank #	205590	7	250	13.794
0407-125	Blank #	205381	11	251	3.500
0407-125	Blank #	205410	4	252	13.794
0407-125	Blank #	205441	11	253	10.853
0407-125	Blank #	205470	9	254	154.971
0407-125	Blank #	205501	107	255	2.029
0407-125	Blank #	205561	3	256	6.441
0407-125	Blank #	205530	6	257	4.971
0407-125	Blank #	205350	5	258	603.500
0407-125	Blank #	205500	412	259	15.265
0407-126	Blank #	206101	12	260	-1.647
0407-126	Blank #	206010	0.5	261	9.382
0407-126	Blank #	206041	8	262	6.441
0407-126	Blank #	205950	6	263	4.971
0407-126	Blank #	205981	5	264	6.441
0407-126	Blank #	206130	6	265	7.912
0407-126	Blank #	206070	7	266	10.853
0407-127	Blank #	205861	9	267	7.912
0407-127	Blank #	205770	7	268	9.382

0407-127	Blank #	205801	8	269	12.324
0407-127	Blank #	205741	10	270	-1.647
0407-127	Blank #	205830	0.5	271	3.500
0407-127	Blank #	205710	4	272	7.912
0407-127	Blank #	205890	7	273	9.382
0407-128	Blank #	206490	8	274	12.324
0407-128	Blank #	206461	10	275	10.853
0407-128	Blank #	206430	9	276	7.912
0407-128	Blank #	206401	7	277	22.618
0407-129	Blank #	206761	17	278	9.382
0407-129	Blank #	209430	8	279	10.853
0407-129	Blank #	209370	9	280	10.853
0407-129	Blank #	206970	9	281	7.912
0407-129	Blank #	206941	7	282	2.029
0407-129	Blank #	206910	3	283	6.441
0407-129	Blank #	206881	6	284	6.441
0407-129	Blank #	206850	6	285	9.382
0407-129	Blank #	206821	8	286	7.912
0407-129	Blank #	206790	7	287	7.912
0407-129	Blank #	209401	7	288	6.441
0407-130	Blank #	206521	6	289	2.029
0407-130	Blank #	206730	3	290	13.794
0407-130	Blank #	206701	11	291	4.971
0407-130	Blank #	206670	5	292	7.912
0407-130	Blank #	206641	7	293	-1.647
0407-130	Blank #	206610	0.5	294	7.912
0407-130	Blank #	206550	7	295	181.441
0407-130	Blank #	206581	125	296	-1.647
0407-131	Blank #	301030	0.5	297	4.971
0407-131	Blank #	209521	5	298	-1.647
0407-131	Blank #	209550	0.5	299	-1.647
0407-131	Blank #	301061	0.5	300	10.853
0407-131	Blank #	301121	9	301	2.029
0407-131	Blank #	301150	3	302	19.676
0407-131	Blank #	301181	15	303	3.500
0407-131	Blank #	301210	4	304	-1.647
0407-131	Blank #	301090	0.5	305	2.029
0407-132	Blank #	301301	3 reassay	306	4.971
0407-132	Blank #	301270	5	307	15.265
0407-132	Blank #	301330	12	308	2.029



0407-132	Blank #	301361	3	309	4.971
0407-132	Blank #	301241	5	310	-1.647
0407-132	Blank #	301280	0.5	311	-0.912
0407-132	Blank #	301320	1	312	-1.647
0407-133	Blank #	301601	0.5	313	-1.647
0407-133	Blank #	301541	0.5	314	-1.647
0407-133	Blank #	301570	0.5	315	4.971
0407-133	Blank #	301510	5	316	-1.647
0407-133	Blank #	301690	0.5	317	37.324
0407-133	Blank #	301661	27	318	-1.647
0407-133	Blank #	301630	0.5	319	-1.647
0407-134	Blank #	301870	0.5	320	4.971
0407-134	Blank #	301721	5	321	6.441
0407-134	Blank #	301750	6	322	6.441
0407-134	Blank #	301781	6	323	3.500
0407-134	Blank #	301810	4	324	-1.647
0407-134	Blank #	301841	0.5	325	3.500
0407-134	Blank #	301901	4	326	2.029
0407-135	Blank #	202270	3	327	0.559
0407-135	Blank #	202181	2	328	2.029
0407-135	Blank #	202150	3	329	13.794
0407-135	Blank #	202241	11	330	6.441
0407-135	Blank #	202301	6	331	2.029
0407-135	Blank #	202330	3	332	10.853
0407-135	Blank #	202361	9	333	-0.912
0407-135	Blank #	202121	1	334	27.029
0407-135	Blank #	202210	20	335	3.500
0407-136	Blank #	202090	4	336	13.794
0407-136	Blank #	202061	11	337	4.971
0407-137	Blank #	806621	5	338	0.559
0407-137	Blank #	202390	2	339	27.029
0407-137	Blank #	202450	20	340	-0.912
0407-137	Blank #	806650	1	341	34.382
0407-137	Blank #	806530	25	342	2.029
0407-137	Blank #	806590	3	343	-1.647
0407-137	Blank #	202421	0.5 reassay	344	2.029
0407-138	Blank #	301390	3	345	-1.647
0407-138	Blank #	301450	0.5	346	-1.647
0407-138	Blank #	301481	0.5	347	-1.647
0407-138	Blank #	301421	0.5	348	7.912

0407-139	Blank #	806770	7		349	-0.912
0407-139	Blank #	806830	1		350	6.441
0407-139	Blank #	806801	6		351	13.794
0407-139	Blank #	806710	11		352	49.088
0407-139	Blank #	806681	35		353	21.147
0407-139	Blank #	806741	16		354	4.971
0407-140	Blank #	209750	5		355	7.912
0407-140	Blank #	209721	7		356	4.971
0407-140	Blank #	209810	5		357	3.500
0407-140	Blank #	209690	4		358	-1.647
0407-140	Blank #	209661	0.5		359	-1.647
0407-140	Blank #	209760	0.5		360	6.441
0407-140	Blank #	209781	6		361	9.382
0407-141	Blank #	209841	8		362	15.265
0407-141	Blank #	415530	12		363	7.912
0407-141	Blank #	209990	7		364	13.794
0407-141	Blank #	209961	11		365	16.735
0407-141	Blank #	209901	13		366	3.500
0407-141	Blank #	209870	4		367	7.912
0407-141	Blank #	415561	7		368	-1.647
0407-141	Blank #	209930	0.5		369	3.500
0407-142	Blank #	415681	4		370	6.441
0407-142	Blank #	415650	6		371	-1.647
0407-142	Blank #	415621	0.5	reassay	372	46.147
0407-142	Blank #	415590	33		373	28.500
0407-143	Blank #	415801	21		374	6.441
0407-143	Blank #	415830	6		375	12.324
0407-143	Blank #	415861	10		376	10.853
0407-143	Blank #	415741	9		377	9.382
0407-143	Blank #	415770	8		378	21.147
0407-143	Blank #	415710	16		379	2.029
0407-144	Blank #	416010	3		380	13.794
0407-144	Blank #	416101	11		381	7.912
0407-144	Blank #	416041	7		382	37.324
0407-144	Blank #	415981	27		383	2.029
0407-144	Blank #	415950	3		384	34.382
0407-144	Blank #	415890	25		385	32.912
0407-144	Blank #	415921	24		386	2.029
0407-144	Blank #	416070	3		387	-1.647
0407-145	Blank #	806890	0.5		388	4.971

0407-145	Blank #	806981	5	389	3.500
0407-145	Blank #	806921	4	390	10.853
0407-145	Blank #	806861	9	391	3.500
0407-145	Blank #	806950	4	392	-0.912
0407-146	Blank #	416430	1	393	3.500
0407-146	Blank #	416461	4	394	12.324
0407-146	Blank #	416341	10	395	6.441
0407-146	Blank #	416370	6	396	9.382
0407-147	Blank #	416490	8	397	1277.029
0407-147	Blank #	368520	870	398	2.029
0407-148	Blank #	368801	3	399	10.853
0407-148	Blank #	368650	9	400	7.912
0407-148	Blank #	368770	7	401	10.853
0407-148	Blank #	368830	9	402	9.382
0407-148	Blank #	368741	8	403	0.559
0407-148	Blank #	368710	2	404	7.912
0407-148	Blank #	368681	7	405	-0.912
0407-149	Blank #	368590	1	406	3.500
0407-149	Blank #	368530	4	407	0.559
0407-149	Blank #	368621	2	408	27.029
0407-149	Blank #	368561	20	409	13.794
0407-150	Blank #	368981	11	410	2.029
0407-150	Blank #	368950	3	411	4.971
0407-150	Blank #	368890	5	412	-1.647
0407-150	Blank #	368861	0.5	413	3.500
0407-150	Blank #	369010	4	414	6.441
0407-151B	Blank #	416281	6	415	0.559
0407-151B	Blank #	416310	2	416	2.029
0407-151B	Blank #	416250	3	417	3.500
0407-151B	Blank #	416221	4	418	2.029
0407-151B	Blank #	416130	3	419	9.382
0407-151B	Blank #	416161	8	420	0.559
0407-152	Blank #	369070	2	421	22.618
0407-152	Blank #	369101	17	422	0.559
0407-152	Blank #	369190	2	423	24.088
0407-152	Blank #	369130	18	424	-1.647
0407-152	Blank #	369161	0.5	425	7.912
0407-152	Blank #	369041	7	426	41.735
0407-153	Blank #	369281	30	427	-1.647
0407-153	Blank #	369401	0.5	428	3.500

0407-153	Blank #	369310	4	429	2.029
0407-153	Blank #	369341	3	430	0.559
0407-153	Blank #	369370	2	431	3.500
0407-154	Blank #	369430	4	432	12.324
0407-154	Blank #	369461	10	433	13.794
0407-154	Blank #	369490	11	434	6.441
0407-154	Blank #	419530	6	435	6.441
0407-154	Blank #	419561	6	436	-0.912
0407-154	Blank #	419590	1	437	37.324
0407-154	Blank #	419621	27	438	3.500
0407-154	Blank #	419650	4	439	12.324
0407-155	Blank #	419681	10	440	9.382
0407-155	Blank #	419741	8	441	3.500
0407-155	Blank #	419770	4	442	2.029
0407-155	Blank #	419710	3	443	12.324
0407-156	Blank #	419921	10	444	2.029
0407-156	Blank #	362030	3	445	6.441
0407-156	Blank #	419950	6	446	4.971
0407-156	Blank #	419890	5	447	15.265
0407-156	Blank #	419861	12	448	4.971
0407-156	Blank #	419830	5	449	13.794
0407-156	Blank #	419801	11	450	18.206
0407-156	Blank #	419981	14	451	13.794
0407-157	Blank #	362121	11	452	13.794
0407-157	Blank #	362061	11	453	3.500
0407-157	Blank #	362090	4	454	2.029
0407-157	Blank #	362100	3	455	0.559
0407-158	Blank #	362241	2	456	2.029
0407-158	Blank #	362210	3	457	0.559
0407-158	Blank #	362181	2	458	2.029
0407-158	Blank #	362150	3	459	9.382
0407-159	Blank #	362330	8	460	40.265
0407-159	Blank #	362301	29	461	12.324
0407-159	Blank #	362270	10	462	24.088
0407-159	Blank #	362361	18	463	40.265
0407-160	Blank #	362390	29	464	7.912
0407-160	Blank #	362421	7	465	25.559
0407-160	Blank #	362450	19	466	16.735
0407-160	Blank #	362481	13	467	2.029
0407-160	Blank #	445030	3	468	13.794