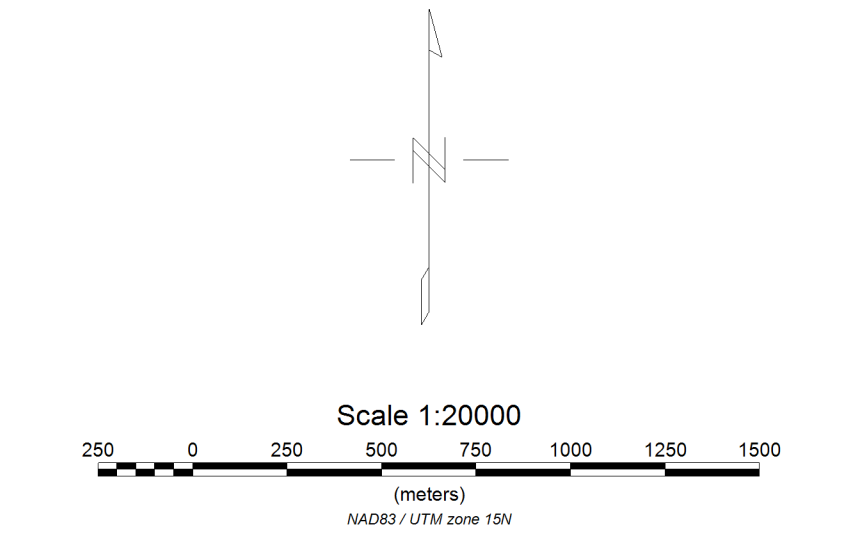
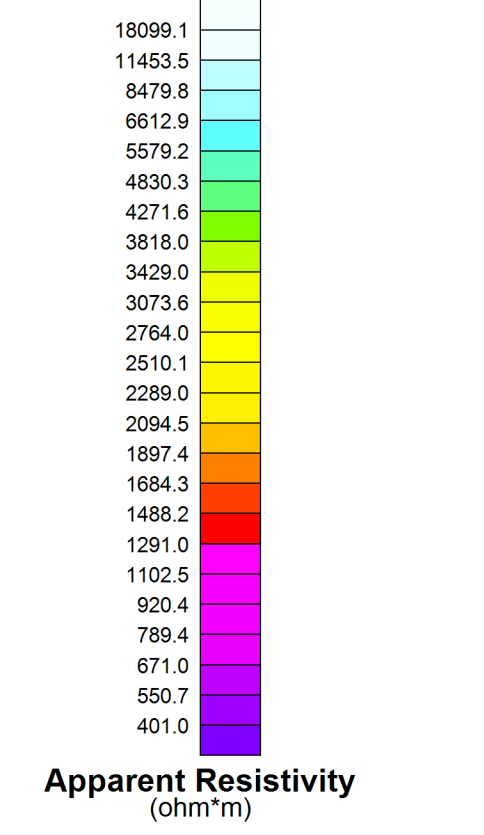
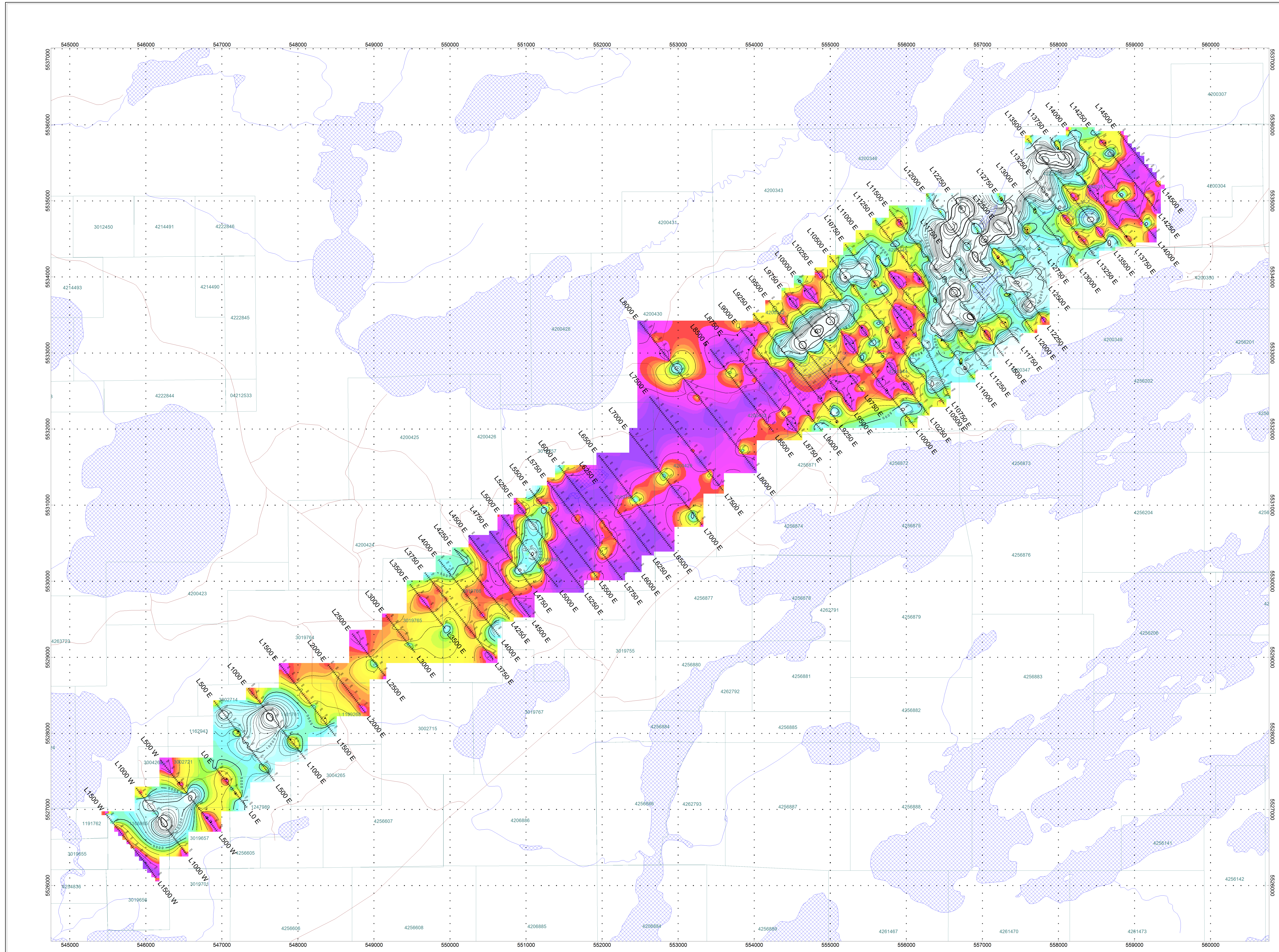


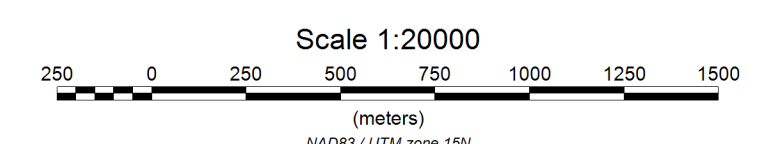
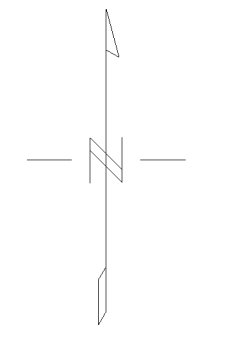
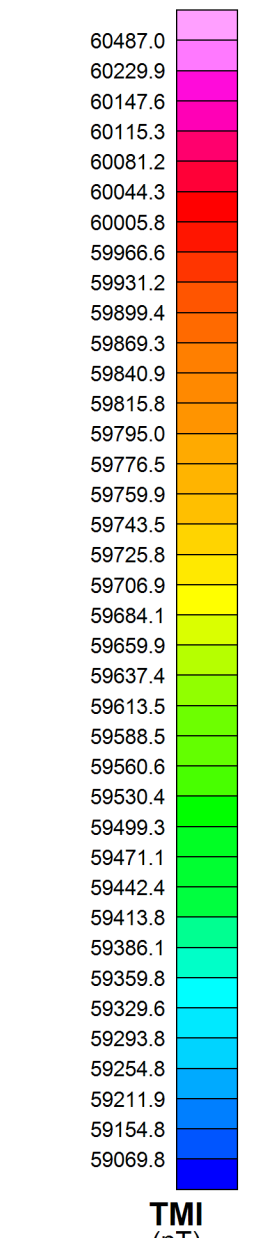
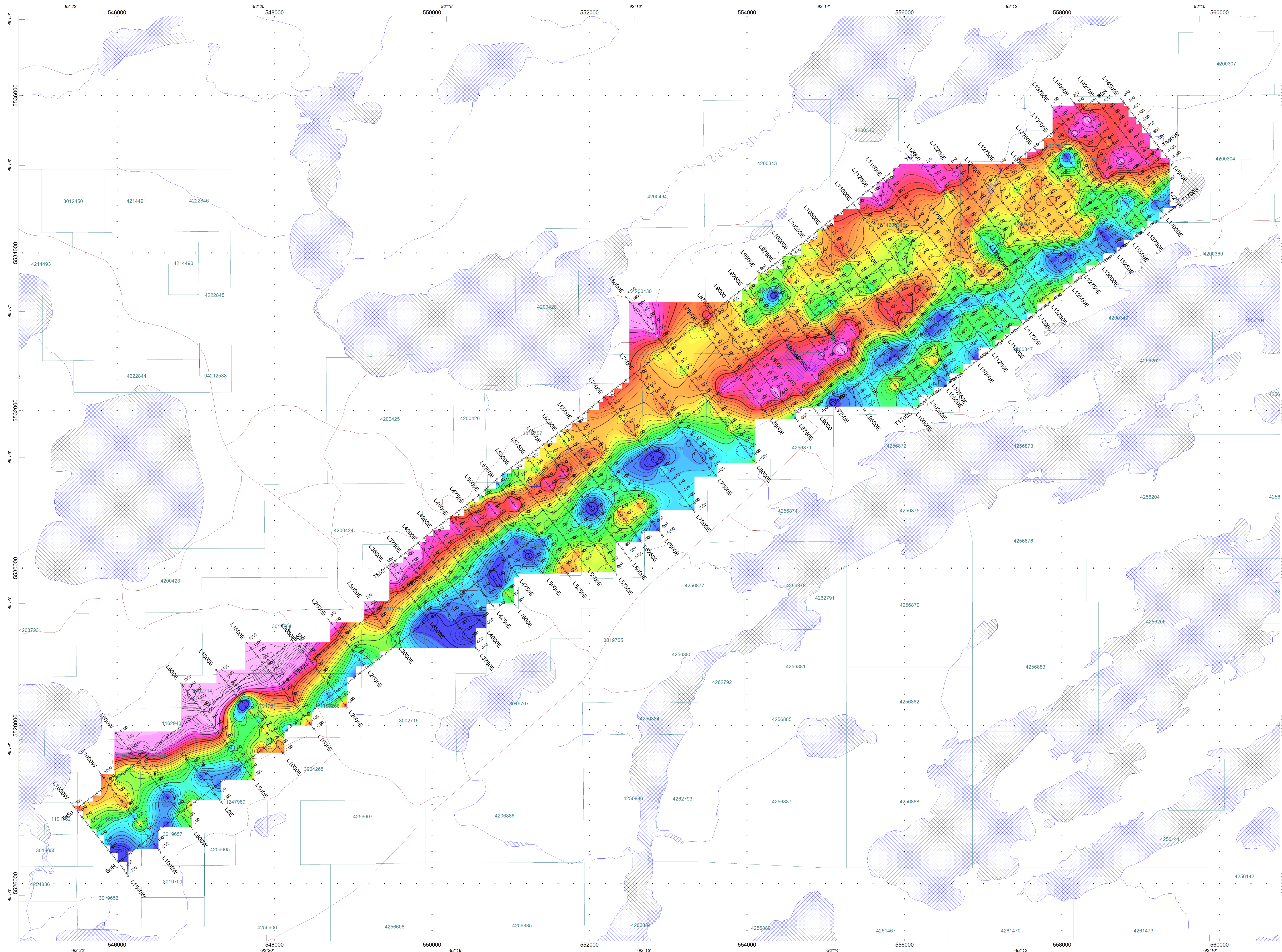
TAMAKA GOLD CORPORATION  
 JVX SPECTRAL IP/RESISTIVITY SURVEY  
 GOLDLUND GRID  
 DRYDEN AREA, NORTHWESTERN ONTARIO  
 NTS: 52F/16

MIP @ N=2  
 Array: Pole-Dipole, a = 25 & 50 m  
 Instruments: (Rx): Scintrex IPR12, (Tx): GDD Tx-II 5000W  
 Topographic base map copyright: © Department of Natural Resources Canada  
 Claims by: © Queen's Printer for Ontario, 2012

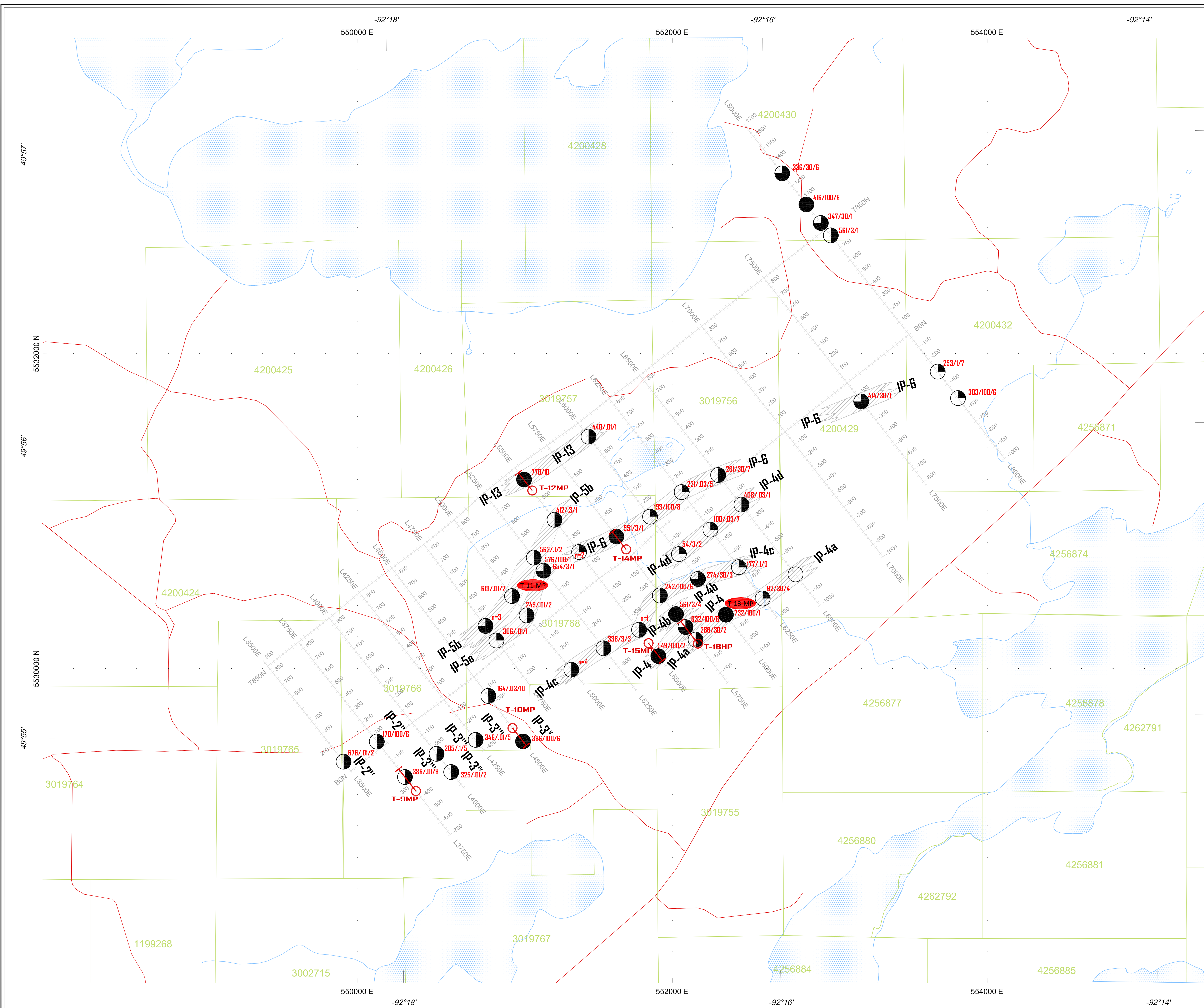
JVX LTD. ref. no. 12-002, June 2012



TAMAKA GOLD CORPORATION  
 JVX SPECTRAL IP RESISTIVITY SURVEY  
 GOLD LUND GRID  
 DRYDEN AREA, NORTHWESTERN ONTARIO  
 NTS: 52F/16  
 APPARENT RESISTIVITY @ N=2  
 Array: Pole-Dipole, a = 25 m  
 Contours: 1000, 5000 & 20 000 ohm·m  
 Instruments: (P); Schlumberger (PR1); (T); GDD Tr-II 5000W  
 Topographic base map copyright: © Department of Natural Resources Canada  
 Claimed by: © Queen's Printer for Ontario, 2012  
 JVX LTD. ref. no. 12-002, June 2012



**TAMAKA GOLD CORPORATION**  
**GOLDLUND GRID**  
**DRYDEN AREA, NORTHWESTERN ONTARIO**  
**NTS: 62F/16**  
**Total Field Magnetism**  
 Contours: 50, 200 & 1000 nT  
 Topographic base map copyright © Department of Natural Resources Canada  
 Created by: S. Queen's Printer for Ontario, 2012  
**JVX LTD. ref. no. 12-002, June 2012**



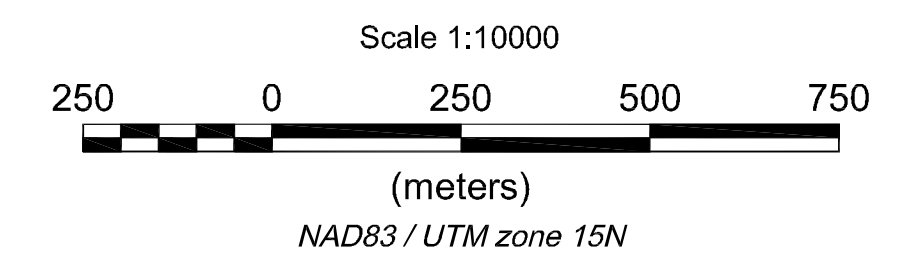
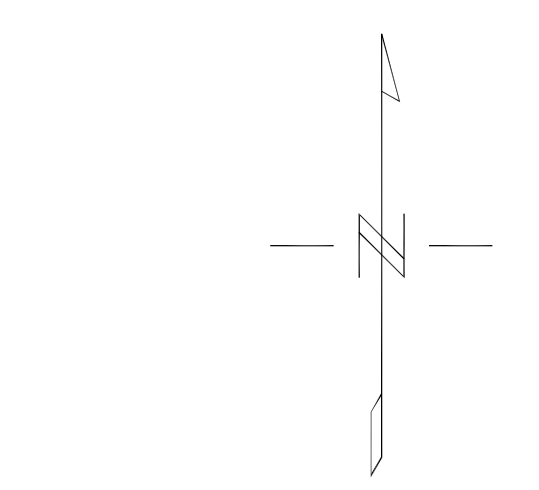
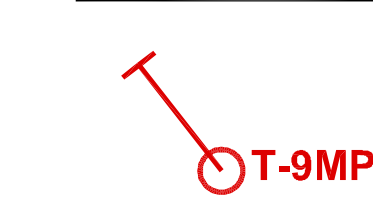
- IP Anomalies**
- >30 mV/V
  - 20-30 mV/V
  - 10-20 mV/V
  - 5-10 mV/V
  - <5 mV/V

- IP Zones**
- IP-6
  - 439/10/3 MIP/Tau/n

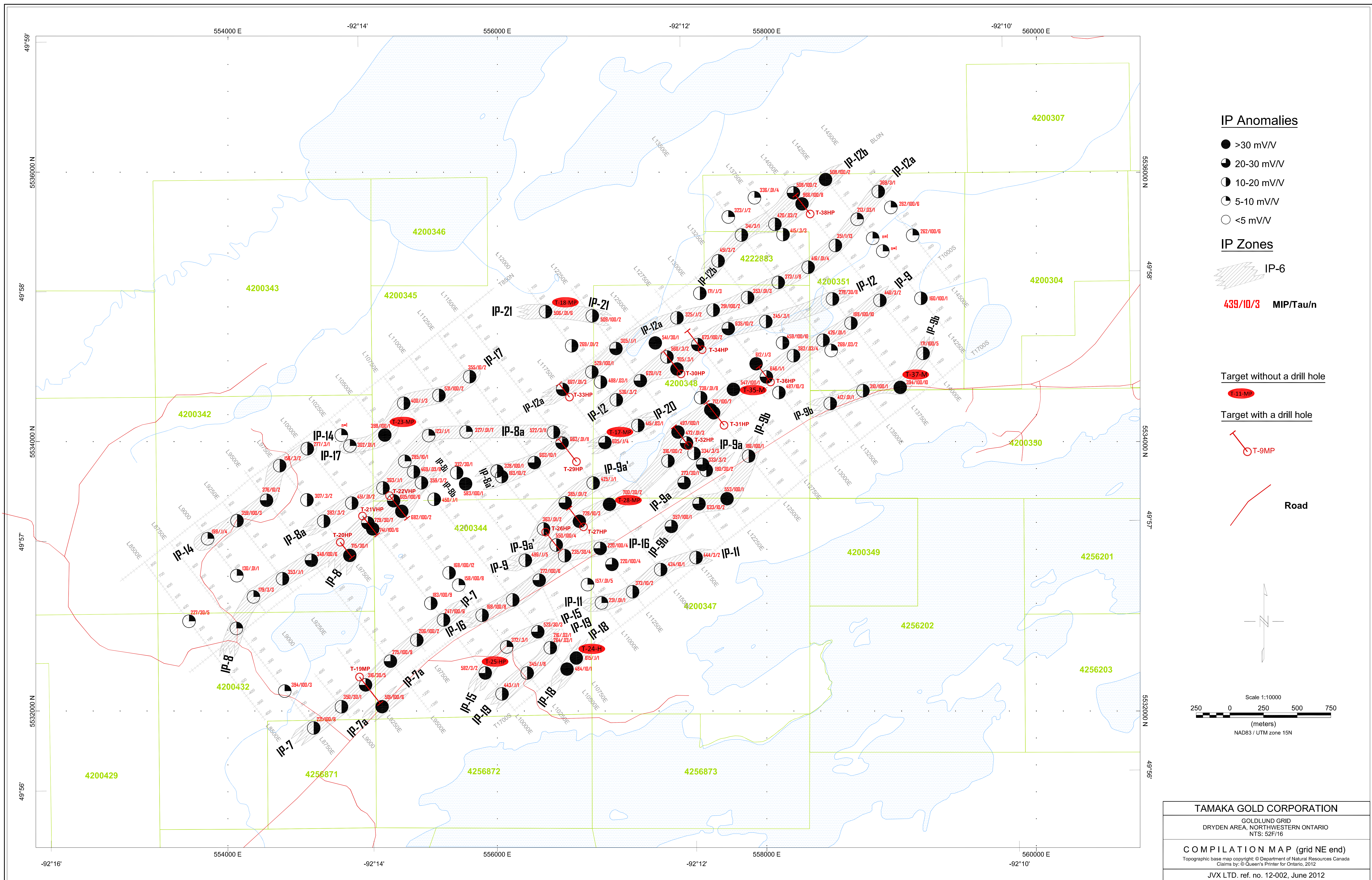
Target without a drill hole



Target with a drill hole



**TAMAKA GOLD CORPORATION**  
 GOLDLUND GRID  
 DRYDEN AREA, NORTHWESTERN ONTARIO  
 NTS: 52F/16  
**COMPILATION MAP (grid central part)**  
Topographic base map copyright: © Department of Natural Resources Canada  
 Claims by: © Queen's Printer for Ontario, 2012  
 JVX LTD. ref. no. 12-002, June 2012



**IP Anomalies**

- >30 mV/V
- 20-30 mV/V
- 10-20 mV/V
- 5-10 mV/V
- <5 mV/V

**IP Zones**

IP-6

439/10/3 MIP/Tau/n

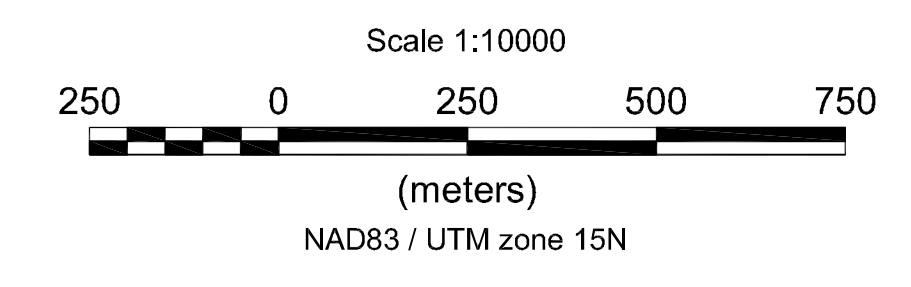
Target without a drill hole

T-11-MP

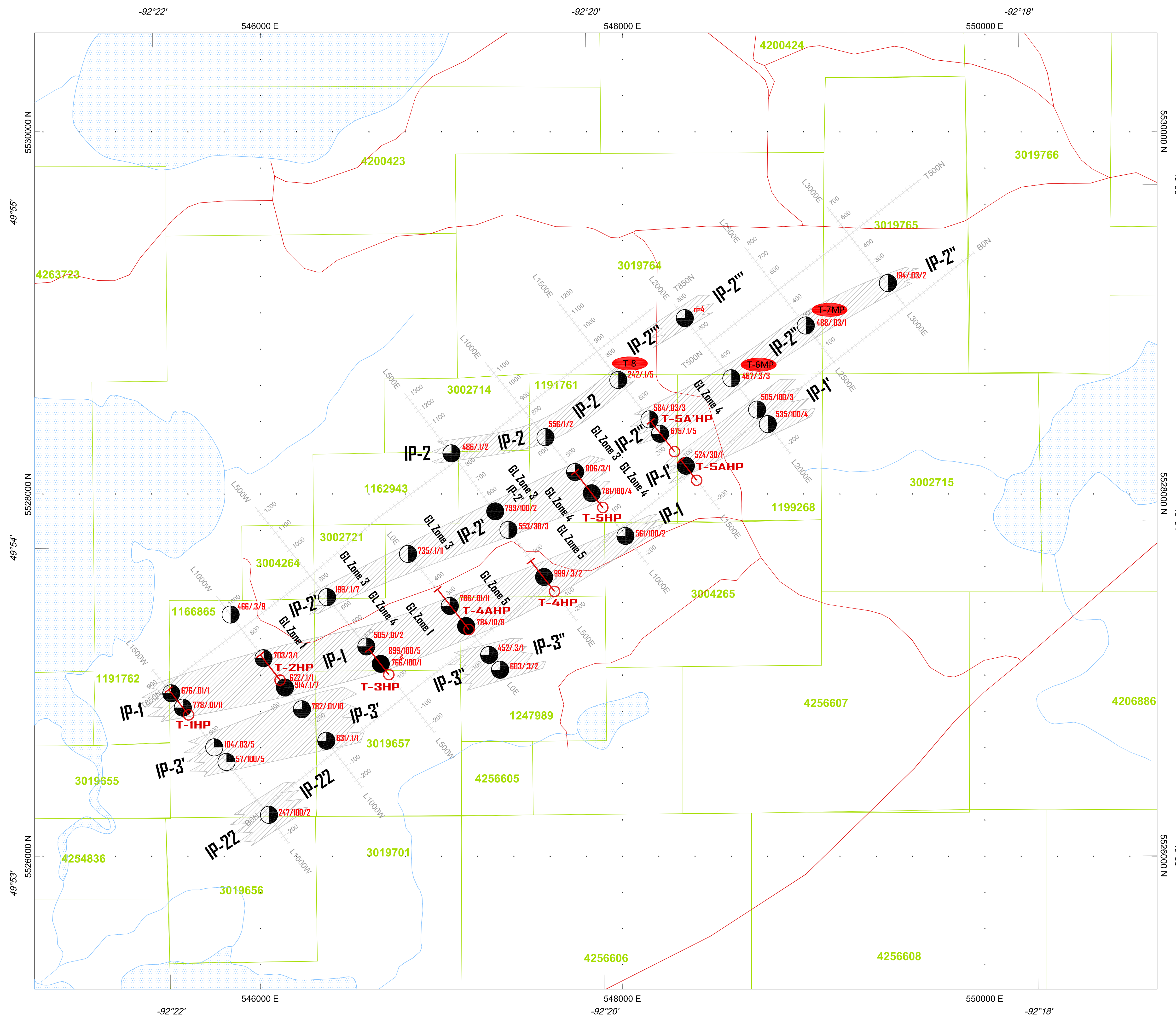
Target with a drill hole

T-9MP

Road



<b>TAMAKA GOLD CORPORATION</b>	
GOLDLUND GRID DRYDEN AREA, NORTHWESTERN ONTARIO NTS: 52F/16	
<b>COMPILATION MAP (grid NE end)</b>	
<small>Topographic base map copyright: © Department of Natural Resources Canada Claims by: © Queen's Printer for Ontario, 2012</small>	
JVX LTD. ref. no. 12-002, June 2012	



**IP Anomalies**

- >30 mV/V
- 20-30 mV/V
- 10-20 mV/V
- 5-10 mV/V
- <5 mV/V

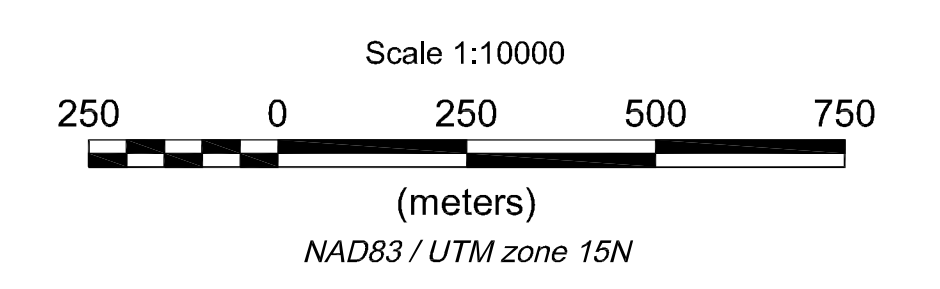
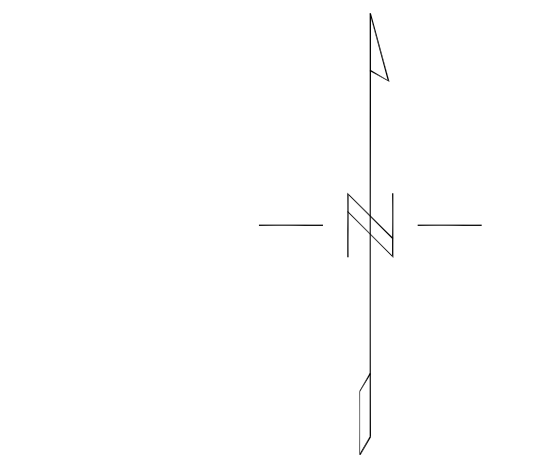
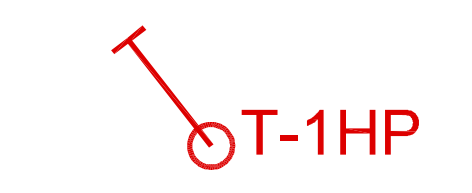
**IP Zones**

- IP-3"
- 439/10/3 MIP/Tau/n

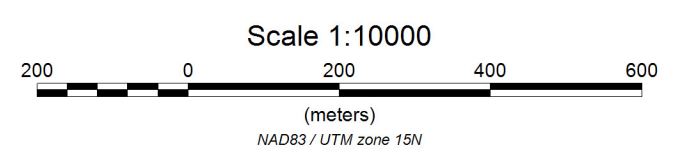
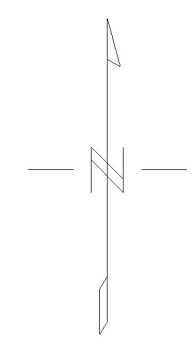
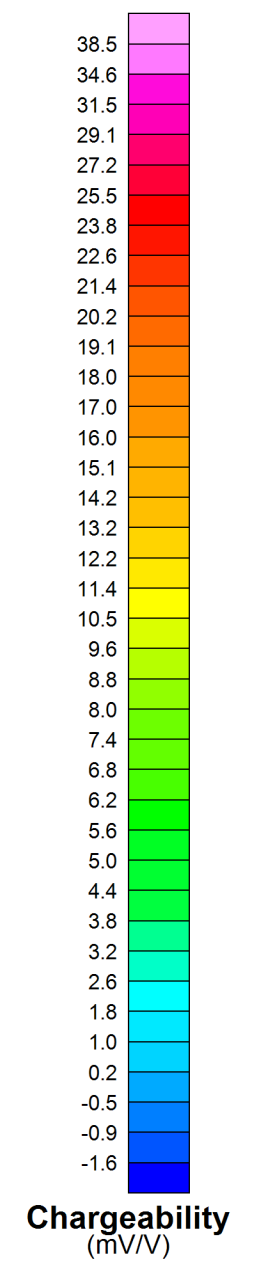
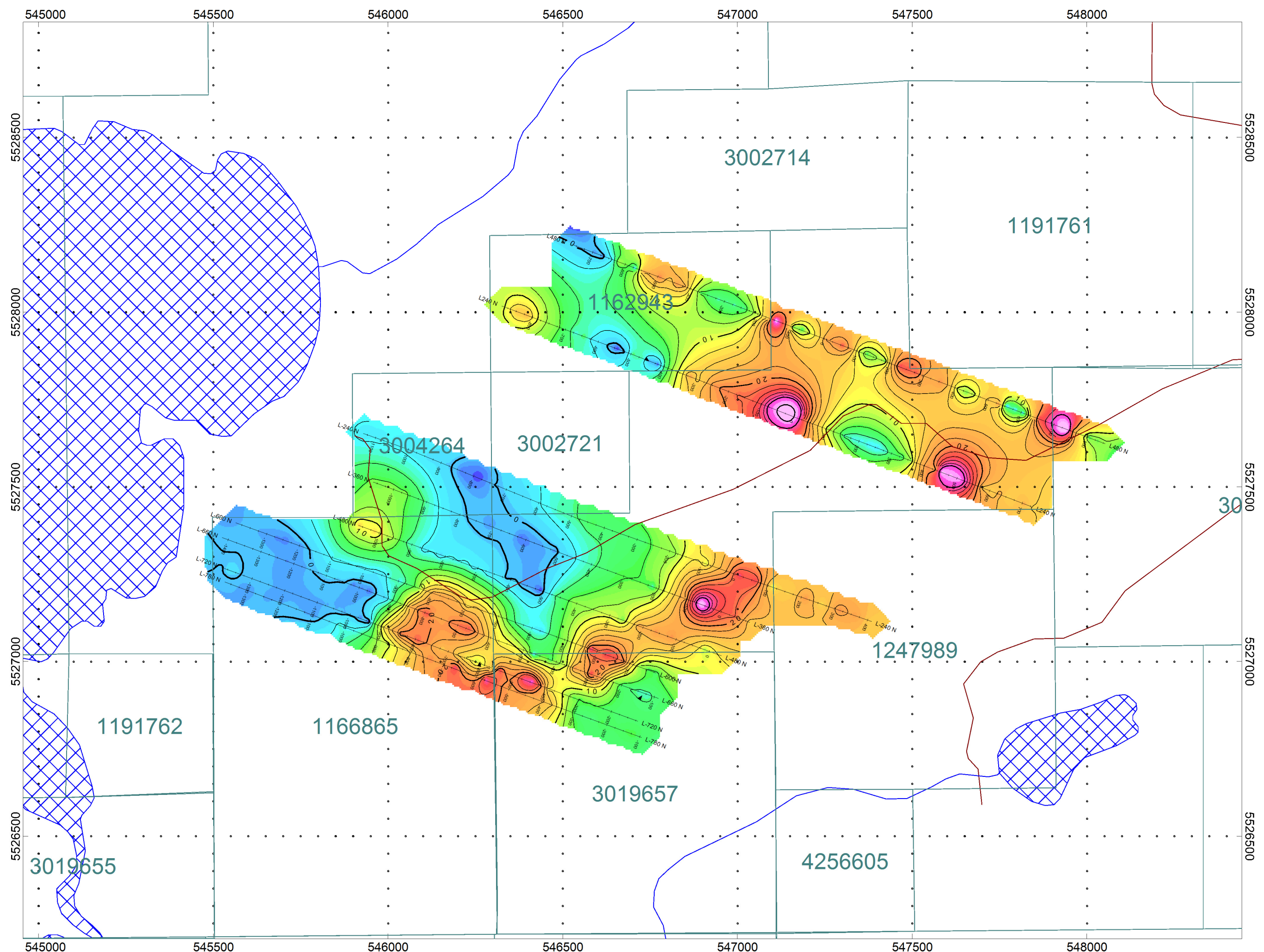
**Target without a drill hole**



**Target with a drill hole**



<b>TAMAKA GOLD CORPORATION</b>
GOLDLUND GRID DRYDEN AREA, NORTHWESTERN ONTARIO NTS: 52F/16
<b>COMPILATION MAP (grid SW end)</b> <small>Topographic base map copyright: © Department of Natural Resources Canada Claims by: © Queen's Printer for Ontario, 2012</small>
<i>JVX LTD. ref. no. 12-002, June 2012</i>



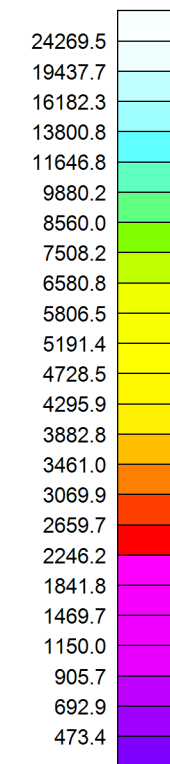
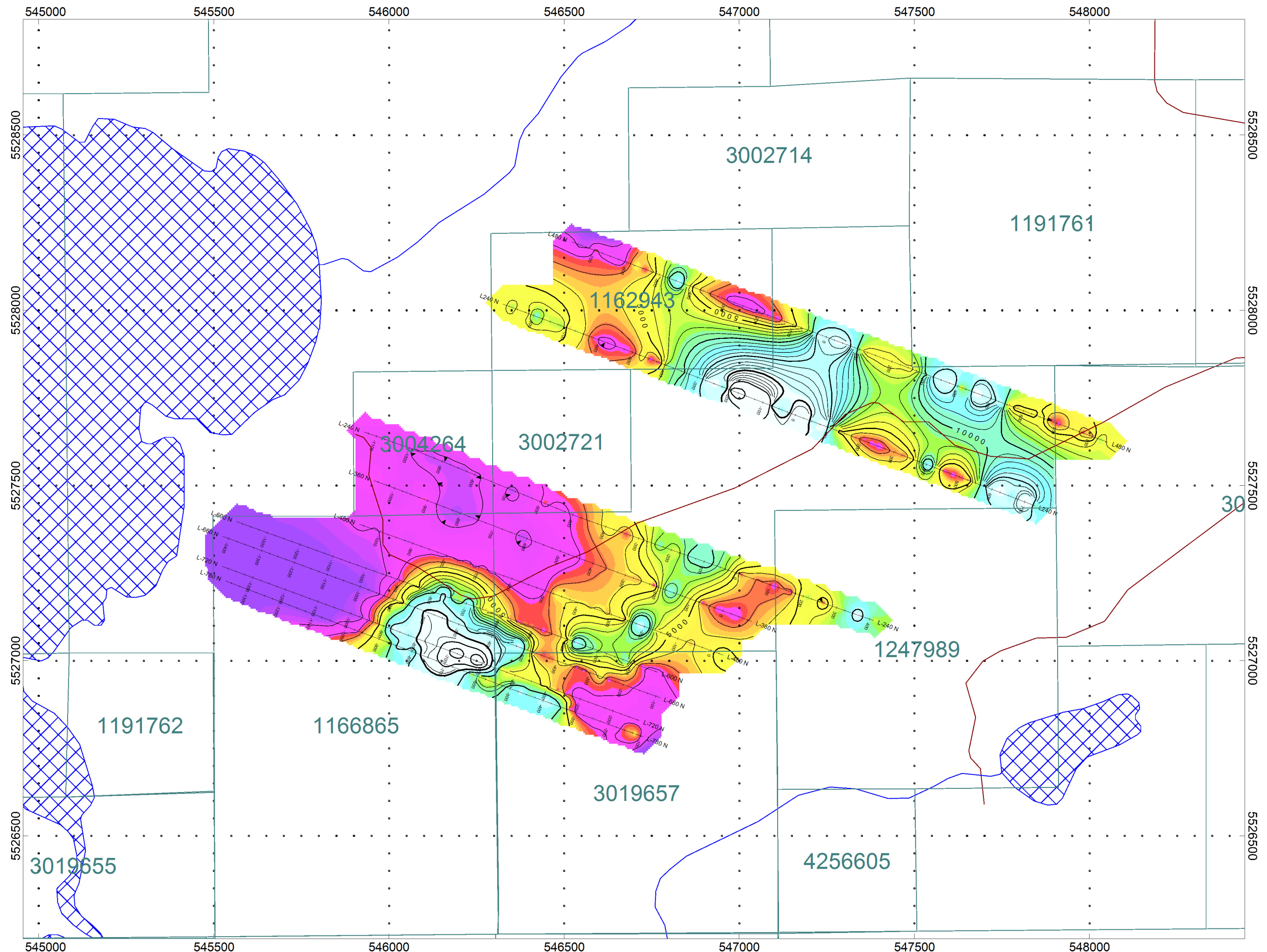
**TAMAKA GOLD CORPORATION**  
**SPECTRAL IP/RESISTIVITY SURVEY**  
**KRP GRID**  
**DRYDEN AREA, NORTHWESTERN ONTARIO**  
**NTS: 52F/16**

---

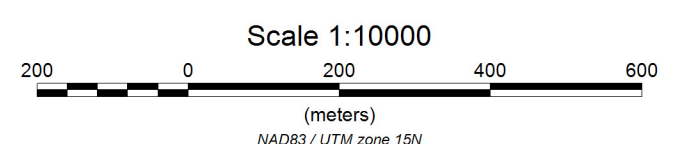
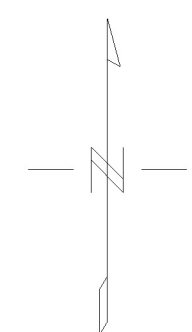
**CHARGEABILITY @ N=2**  
 Array: Pole-Dipole, a = 25 & 50 m  
 Contours: 2, 10 & 50 mV/V  
 Instruments: (Rx): Scintrex IPR12, (Tx): GDD Tx-II 5000W  
 Topographic base map copyright: © Department of Natural Resources Canada  
 Claims by: © Queen's Printer for Ontario, 2012

---

**JVX LTD. ref. no. 12-002, June 2012**



**Apparent Resistivity**  
(ohm\*m)



**TAMAKA GOLD CORPORATION**

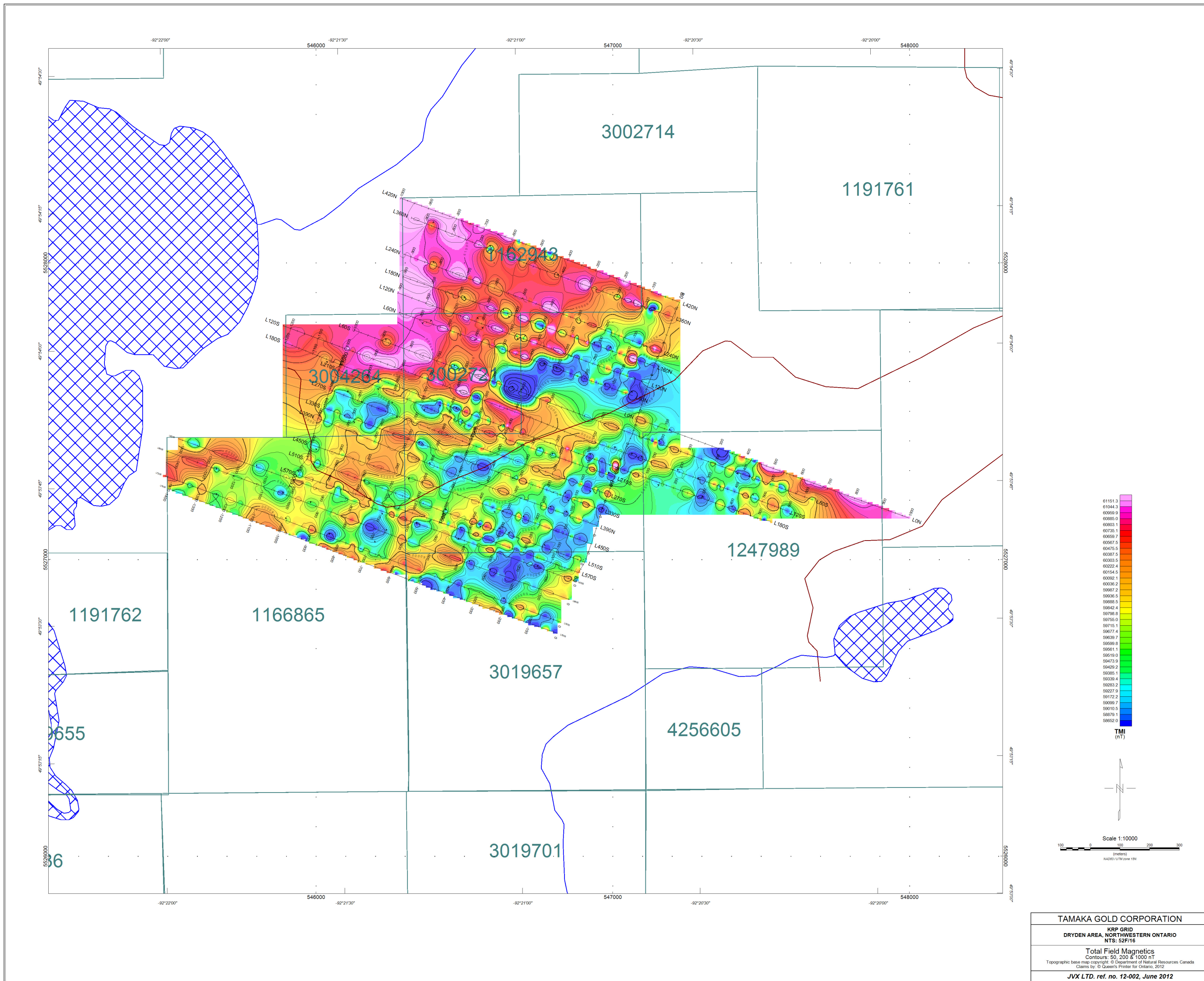
**SPECTRAL IP/RESISTIVITY SURVEY  
KRP GRID  
DRYDEN AREA, NORTHWESTERN ONTARIO  
NTS: 52F/16**

**APPARENT RESISTIVITY @ N=2**

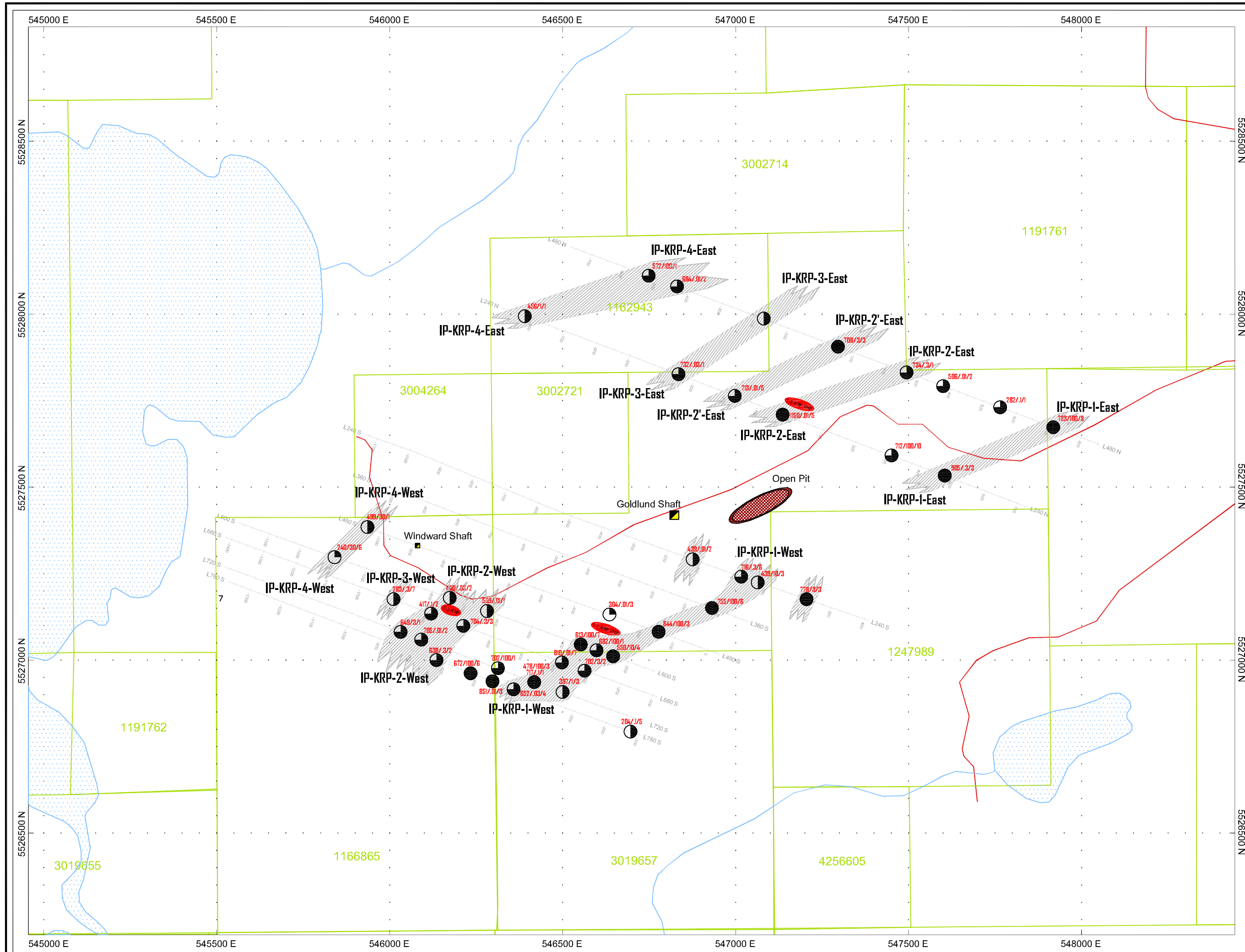
Array: Pole-Dipole, a = 25 m  
Contours: 1000, 5000 & 20 000 ohm\*m  
Instruments: (Rx): Scintrex IPR12, (Tx): GDD Tx-II 5000W  
Topographic base map copyright: © Department of Natural Resources Canada  
Claims by: © Queen's Printer for Ontario, 2012

**JVX LTD. ref. no. 12-002, June 2012**





TAMAKA GOLD CORPORATION  
 NTP GRID  
 DRYDEN AREA, NORTHWESTERN ONTARIO  
 NTS: 52F/16  
 Total Field Magnetism  
 Contours: 50, 200 & 1000 nT  
 Topographic base map copyright: © Department of Natural Resources Canada  
 Claims by: © Queen's Printer for Ontario, 2012  
 JVX LTD. ref. no. 12-002, June 2012



**IP Anomalies**

- >30 mV/V
- 20-30 mV/V
- 10-20 mV/V
- 5-10 mV/V
- <5 mV/V

**IP Zones**

IP-KRP-1-East

**439/10/3** MIP/Tau/n

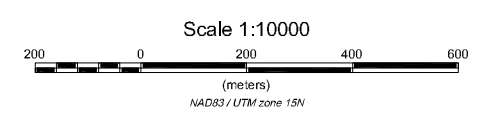
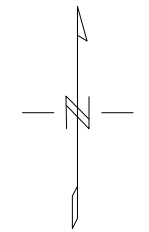
**Target**

IP-1-VHP

Road

Shaft

Pit



<b>TAMAKA GOLD CORPORATION</b>
KRP GRID DRYDEN AREA, NORTHWESTERN ONTARIO NTS: 52F/16
<b>COMPILATION MAP</b>
<small>Topographic base map copyright: © Department of Natural Resources Canada Claims by: © Queen's Printer for Ontario, 2012</small>
<i>JVX LTD. ref. no. 12-002, June 2012</i>