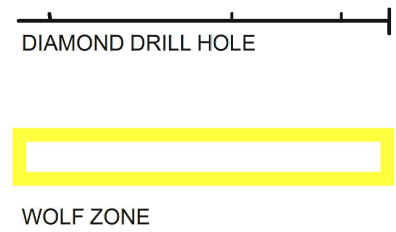


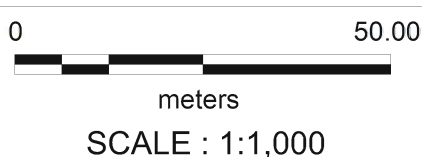
SYMBOL LEGEND



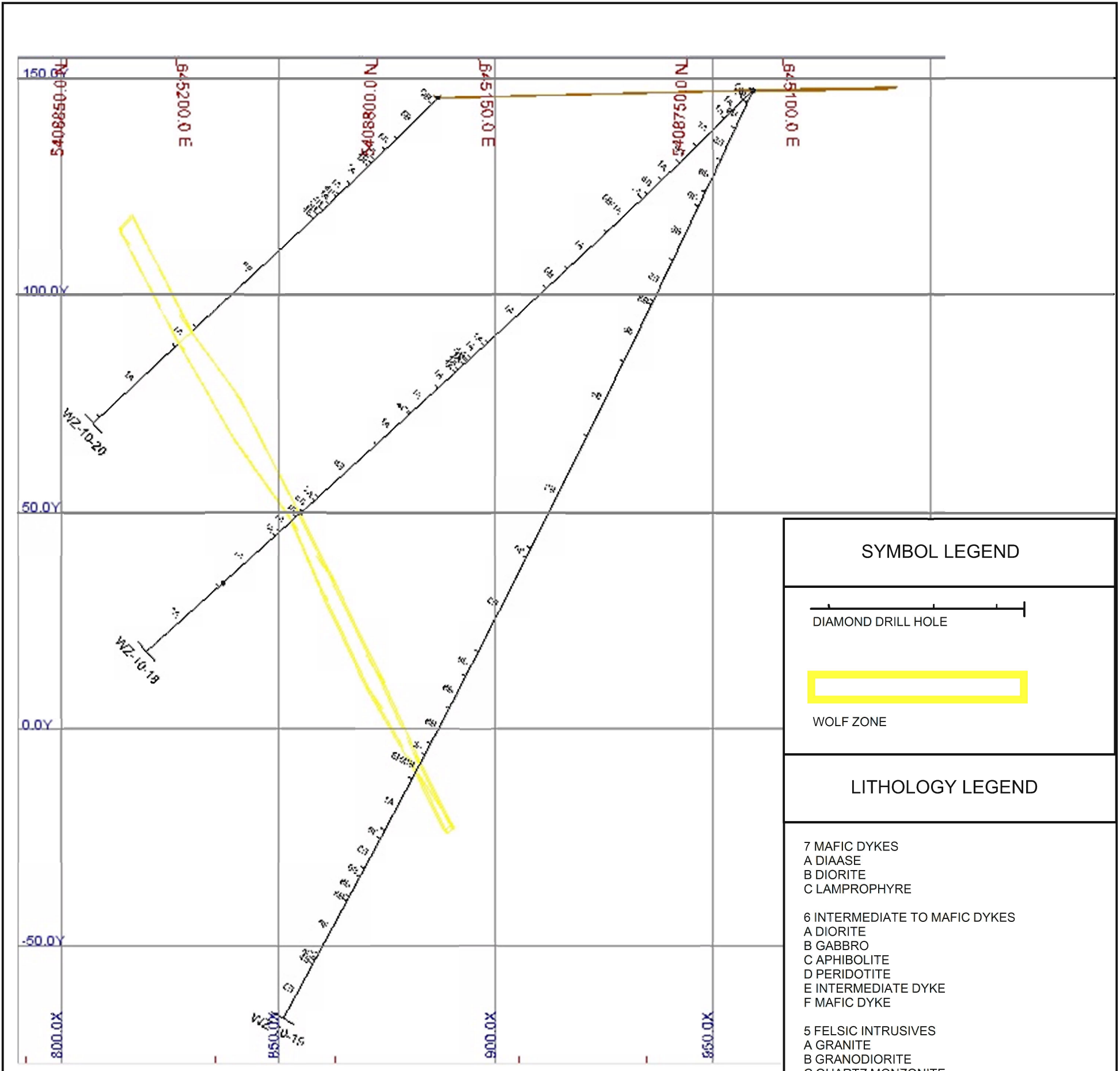
LITHOLOGY LEGEND

- 7 MAFIC DYKES
 - A DIAASE
 - B DIORITE
 - C LAMPROPHYRE
- 6 INTERMEDIATE TO MAFIC DYKES
 - A DIORITE
 - B GABBRO
 - C APHIBOLITE
 - D PERIDOTITE
 - E INTERMEDIATE DYKE
 - F MAFIC DYKE
- 5 FELSIC INTRUSIVES
 - A GRANITE
 - B GRANODIORITE
 - C QUARTZ MONZONITE
 - D SYANITE
- 4 FELSIC PORPHYRITIC INTRUSIVES
 - A QUARTZ PORPHYRY
 - FELDSPAR PORPHYRY
 - C QUARTZ-FELDSPAR PORPHYRY
 - D FELSITE
 - E PEGMATITE
- 3 SEDIMENTS
 - A GREYWACKE
 - B ARGILLITE
 - C CONGLOMERATE
 - D IRON FORMATION
 - F CHERT
- 2 INTERMEDIATE TO FELSIC VOLCANICS
 - A FELSIC MASSIVE FLOWS
 - B FELSIC TUFF
 - C FELSIC LAPILLI TUFF
 - D INTERMEDIATE MASSIVE FLOWS
 - E INTERMEDIATE TUFF
 - F INTERMEDIATE LAPILLI TUFF
 - I FELSIT TO INTERMEDIATE VOLCANOCLASTICS
- 1 MAFIC TO ULTRAMAFIC VOLCANICS
 - A MASSIVE FLOWS
 - B PILLOW FLOWS
 - C AGGLOMERATE
 - D VARIOLITIC FLOWS
 - E AMYGDUALOIDAL, VESICULAR FLOWS
 - F FLOW-TOP BRECCIAS
 - G AMPHIBOLITIC FLOWS
 - H MAFIC TUFF
 - I VOLCANOCLASTICS
 - U ULTRAMAFIC FLOWS
 - Z GABBROIC END MEMBER
- ABBREVIATIONS
 - SH SHEAR ZONE
 - MZ MINERALIZED ZONE
 - FZ FAULT ZONE

HOLE_ID	EASTING	NORTHING	ELEVATION	DIP	AZ	DEPTH
WZ-10-01	645,034.05	5,409,014.32	422.736	-45	90	47.85
WZ-10-02	645,034.05	5,409,014.32	422.736	-65	90	78.33
WZ-10-03	645,015.86	5,408,931.31	415.91	-45	90	133.5
WZ-10-04	645,015.86	5,408,931.31	415.91	-65	90	135.33
WZ-10-05	645,015.86	5,408,931.31	415.91	-80	90	185.01
WZ-10-06	645,015.86	5,408,931.31	415.91	-45	40	108.51
WZ-10-07	645,015.86	5,408,931.31	415.91	-65	40	133.5
WZ-10-08	645,064.42	5,408,945.12	415.862	-45	90	68.58
WZ-10-09	644,983.9	5,409,013.78	422.736	-45	90	137.4
WZ-10-10	644,983.9	5,409,013.78	422.736	-65	90	134.8
WZ-10-11	644,983.9	5,409,013.78	422.736	-45	50	82.9
WZ-10-12	644,983.9	5,409,013.78	422.736	-65	50	92.6
WZ-10-13	645,098.36	5,408,879.2	410.077	-45	65	96.32
WZ-10-14	645,098.36	5,408,879.2	410.077	-65	65	96.62
WZ-10-15	644,889.65	5,409,088.75	419.607	-45	55	137.5
WZ-10-16	644,889.65	5,409,088.75	419.607	-65	55	204
WZ-10-17	645,054.03	5,408,840.54	409.159	-65	55	99.67
WZ-10-18	645,105.14	5,408,739.27	409.244	-45	50	190.5
WZ-10-19	645,105.14	5,408,739.27	409.244	-65	50	239.88
WZ-10-20	645,157.13	5,408,790.01	407.477	-45	50	109.75
WZ-10-21	644,902.96	5,408,958.68	423.563	-45	50	215.5
WZ-10-22	644,902.96	5,408,958.68	423.563	-60	50	194.5
WZ-10-23	645,181.8	5,408,746.21	410.406	-45	65	120.7
WZ-10-24	645,137.54	5,408,703.95	408.066	-45	50	251.76
WZ-10-25	644,977.66	5,408,788.6	413.114	-45	50	236.52
WZ-10-26	644,977.66	5,408,788.6	413.114	-65	60	309.98
WZ-10-27	644,859.27	5,409,326.12	425.568	-45	65	242.5
WZ-10-28	644,938.2	5,408,870.66	417.919	-65	50	267.31
WZ-11-29	645,154.9	5,408,156.14	404.552	-50	50	535.67
WZ-11-30	645,219.84	5,408,620.47	405.425	-50	50	264.26
WZ-11-31	645,219.91	5,408,622.56	405.022	-50	90	242.93
WZ-11-32	644,820.43	5,409,116.07	418.11	-45	50	154.53



WOLF ZONE MINING CLAIM
SECTION 1 1069325



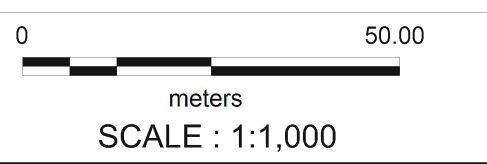
SYMBOL LEGEND

- DIAMOND DRILL HOLE
- ▭ WOLF ZONE

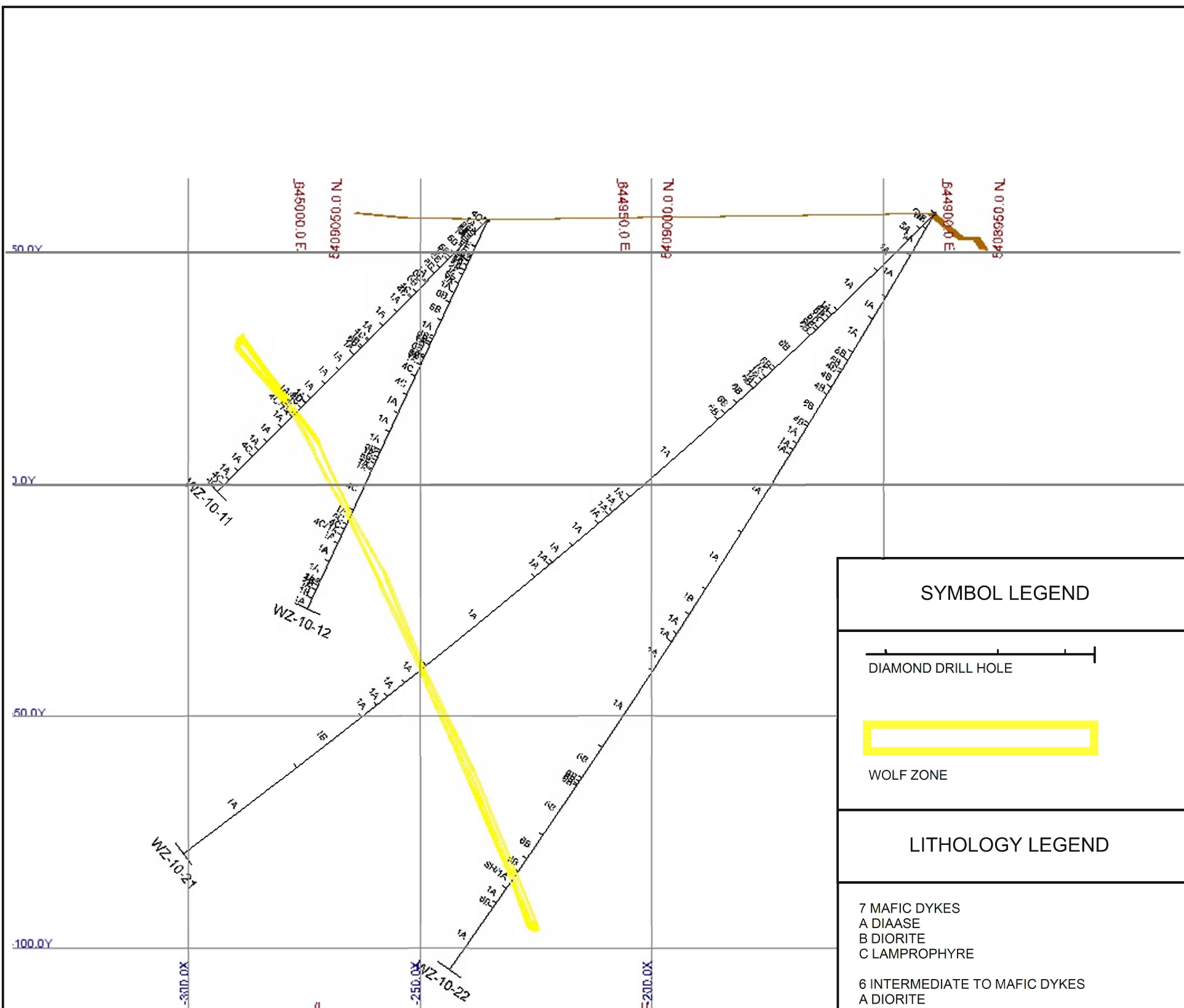
LITHOLOGY LEGEND

- 7 MAFIC DYKES
 - A DIAASE
 - B DIORITE
 - C LAMPORPHYRE
- 6 INTERMEDIATE TO MAFIC DYKES
 - A DIORITE
 - B GABBRO
 - C AMPHIBOLITE
 - D PERIDOTITE
 - E INTERMEDIATE DYKE
 - F MAFIC DYKE
- 5 FELSIC INTRUSIVES
 - A GRANITE
 - B GRANODIORITE
 - C QUARTZ MONZONITE
 - D SYANITE
- 4 FELSIC PORPHYRITIC INTRUSIVES
 - A QUARTZ PORPHYRY
 - FELDSPAR PORPHYRY
 - C QUARTZ-FELDSPAR PORPHYRY
 - D FELSITE
 - E PEGMATITE
- 3 SEDIMENTS
 - A GREYWACKE
 - B ARGILLITE
 - C CONGLOMERATE
 - D IRON FORMATION
 - F CHERT
- 2 INTERMEDIATE TO FELSIC VOLCANICS
 - A FELSIC MASSIVE FLOWS
 - B FELSIC TUFF
 - C FELSIC LAPILLI TUFF
 - D INTERMEDIATE MASSIVE FLOWS
 - E INTERMEDIATE TUFF
 - F INTERMEDIATE LAPILLI TUFF
 - I FELSIT TO INTERMEDIATE VOLCANOCLASTICS
- 1 MAFIC TO ULTRAMAFIC VOLCANICS
 - A MASSIVE FLOWS
 - B PILLOW FLOWS
 - C AGGLOMERATE
 - D VARIOLITIC FLOWS
 - E AMYGDUALOIDAL, VESICULAR FLOWS
 - F FLOW-TOP BRECCIAS
 - G AMPHIBOLITIC FLOWS
 - H MAFIC TUFF
 - I VOLCANOCLASTICS
 - U ULTRAMAFIC FLOWS
 - Z GABBROIC END MEMBER
- ABBREVIATIONS
 - SH SHEAR ZONE
 - MZ MINERALIZED ZONE
 - FZ FAULT ZONE

HOLE_ID	EASTING	NORTHING	ELEVATION	DIP	AZ	DEPTH
WZ-10-01	645,034.05	5,409,014.32	422.736	-45	90	47.85
WZ-10-02	645,034.05	5,409,014.32	422.736	-65	90	78.33
WZ-10-03	645,015.86	5,408,931.31	415.91	-45	90	133.5
WZ-10-04	645,015.86	5,408,931.31	415.91	-65	90	135.33
WZ-10-05	645,015.86	5,408,931.31	415.91	-80	90	185.01
WZ-10-06	645,015.86	5,408,931.31	415.91	-45	40	108.51
WZ-10-07	645,015.86	5,408,931.31	415.91	-65	40	133.5
WZ-10-08	645,064.42	5,408,945.12	415.862	-45	90	68.58
WZ-10-09	644,983.9	5,409,013.78	422.736	-45	90	94.8
WZ-10-10	644,983.9	5,409,013.78	422.736	-65	90	137.4
WZ-10-11	644,983.9	5,409,013.78	422.736	-45	50	82.9
WZ-10-12	644,983.9	5,409,013.78	422.736	-65	50	92.6
WZ-10-13	645,098.36	5,408,879.2	410.077	-45	65	96.32
WZ-10-14	645,098.36	5,408,879.2	410.077	-65	65	96.62
WZ-10-15	644,889.65	5,409,088.75	419.607	-45	55	137.5
WZ-10-16	644,889.65	5,409,088.75	419.607	-65	55	204
WZ-10-17	645,054.03	5,408,840.54	409.159	-65	55	99.67
WZ-10-18	645,105.14	5,408,739.27	409.244	-45	50	190.5
WZ-10-19	645,105.14	5,408,739.27	409.244	-65	50	239.88
WZ-10-20	645,157.13	5,408,790.01	407.477	-45	50	109.75
WZ-10-21	644,902.96	5,408,958.68	423.563	-45	50	215.5
WZ-10-22	644,902.96	5,408,958.68	423.563	-60	50	194.5
WZ-10-23	645,181.8	5,408,746.21	410.406	-45	65	120.7
WZ-10-24	645,137.54	5,408,703.95	408.066	-45	50	251.76
WZ-10-25	644,977.66	5,408,788.6	413.114	-45	50	236.52
WZ-10-26	644,977.66	5,408,788.6	413.114	-65	60	309.98
WZ-10-27	644,859.27	5,409,326.12	425.568	-45	65	242.5
WZ-10-28	644,938.2	5,408,870.66	417.919	-65	50	267.31
WZ-11-29	645,154.9	5,408,156.14	404.552	-50	50	535.67
WZ-11-30	645,219.84	5,408,620.47	405.425	-50	50	264.26
WZ-11-31	645,219.91	5,408,622.56	405.022	-50	90	242.93
WZ-11-32	644,820.43	5,409,116.07	418.11	-45	50	154.53



WOLF ZONE MINING CLAIM
SECTION 2 1069324



SYMBOL LEGEND

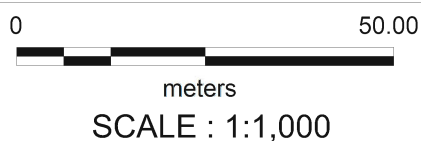
DIAMOND DRILL HOLE

WOLF ZONE

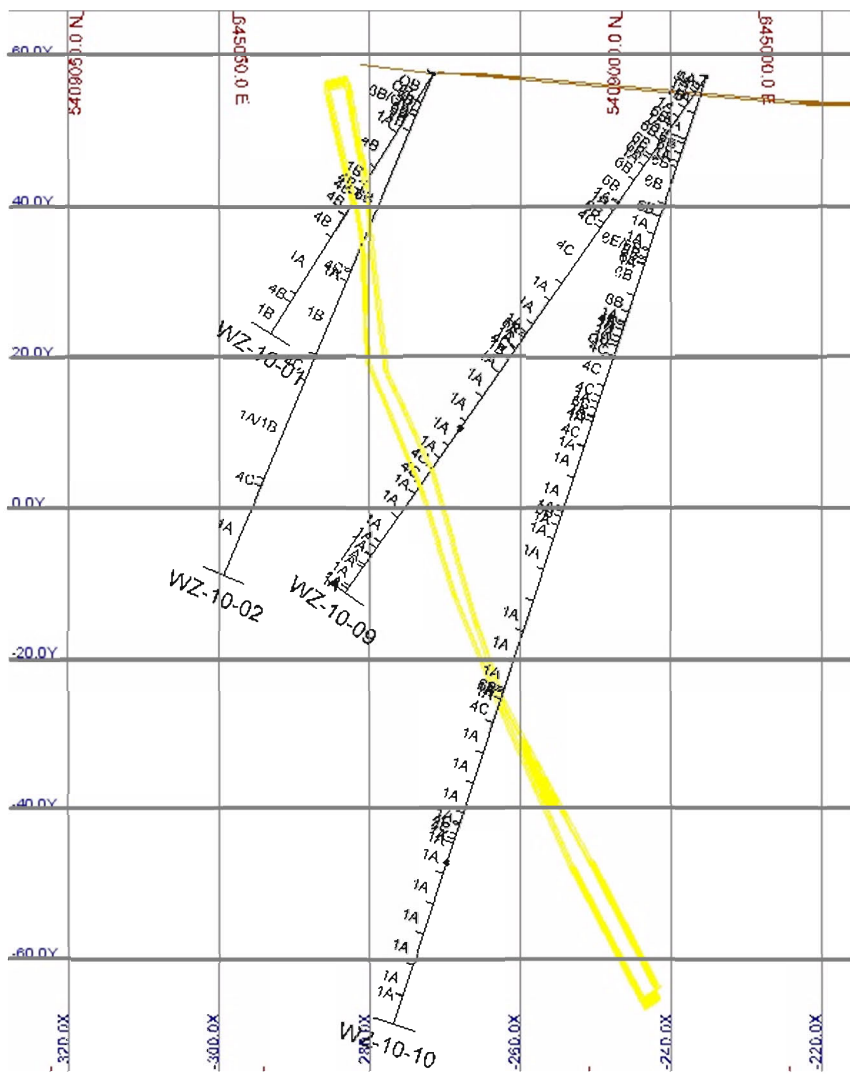
LITHOLOGY LEGEND

- 7 MAFIC DYKES
 - A DIAASE
 - B DIORITE
 - C LAMPORPHYRE
 - 6 INTERMEDIATE TO MAFIC DYKES
 - A DIORITE
 - B GABBRO
 - C AMPHIBOLITE
 - D PERIDOTITE
 - E INTERMEDIATE DYKE
 - F MAFIC DYKE
 - 5 FELSIC INTRUSIVES
 - A GRANITE
 - B GRANODIORITE
 - C QUARTZ MONZONITE
 - D SYANITE
 - 4 FELSIC PORPHYRITIC INTRUSIVES
 - A QUARTZ PORPHYRY
 - FELDSPAR PORPHYRY
 - C QUARTZ-FELDSPAR PORPHYRY
 - D FELSITE
 - E PEGMATITE
 - 3 SEDIMENTS
 - A GREYWACKE
 - B ARGILLITE
 - C CONGLOMERATE
 - D IRON FORMATION
 - F CHERT
 - 2 INTERMEDIATE TO FELSIC VOLCANICS
 - A FELSIC MASSIVE FLOWS
 - B FELSIC TUFF
 - C FELSIC LAPILLI TUFF
 - D INTERMEDIATE MASSIVE FLOWS
 - E INTERMEDIATE TUFF
 - F INTERMEDIATE LAPILLI TUFF
 - I FELSIT TO INTERMEDIATE VOLCANOCLASTICS
 - 1 MAFIC TO ULTRAMAFIC VOLCANICS
 - A MASSIVE FLOWS
 - B PILLOW FLOWS
 - C AGGLOMERATE
 - D VARIOLITIC FLOWS
 - E AMYGDUALOIDAL, VESICULAR FLOWS
 - F FLOW-TOP BRECCIAS
 - G AMPHIBOLITIC FLOWS
 - H MAFIC TUFF
 - I VOLCANOCLASTICS
 - U ULTRAMAFIC FLOWS
 - Z GABBROIC END MEMBER
- ABBREVIATIONS
 SH SHEAR ZONE
 MZ MINERALIZED ZONE
 FZ FAULT ZONE

HOLE_ID	EASTING	NORTHING	ELEVATION	DIP	AZ	DEPTH
WZ-10-01	645,034.05	5,409,014.32	422.736	-45	90	47.85
WZ-10-02	645,034.05	5,409,014.32	422.736	-65	90	78.33
WZ-10-03	645,015.86	5,408,931.31	415.91	-45	90	133.5
WZ-10-04	645,015.86	5,408,931.31	415.91	-65	90	135.33
WZ-10-05	645,015.86	5,408,931.31	415.91	-80	90	185.01
WZ-10-06	645,015.86	5,408,931.31	415.91	-45	40	108.51
WZ-10-07	645,015.86	5,408,931.31	415.91	-65	40	133.5
WZ-10-08	645,064.42	5,408,945.12	415.862	-45	90	68.58
WZ-10-09	644,983.9	5,409,013.78	422.736	-45	90	94.8
WZ-10-10	644,983.9	5,409,013.78	422.736	-65	90	137.4
WZ-10-11	644,983.9	5,409,013.78	422.736	-45	50	82.9
WZ-10-12	644,983.9	5,409,013.78	422.736	-65	50	92.6
WZ-10-13	645,098.36	5,408,879.2	410.077	-45	65	96.32
WZ-10-14	645,098.36	5,408,879.2	410.077	-65	65	96.62
WZ-10-15	644,889.65	5,409,088.75	419.607	-45	55	137.5
WZ-10-16	644,889.65	5,409,088.75	419.607	-65	55	204
WZ-10-17	645,054.03	5,408,840.54	409.159	-65	55	99.67
WZ-10-18	645,105.14	5,408,739.27	409.244	-45	50	190.5
WZ-10-19	645,105.14	5,408,739.27	409.244	-65	50	239.88
WZ-10-20	645,157.13	5,408,790.01	407.477	-45	50	109.75
WZ-10-21	644,902.96	5,408,958.68	423.563	-45	50	215.5
WZ-10-22	644,902.96	5,408,958.68	423.563	-60	50	194.5
WZ-10-23	645,181.8	5,408,746.21	410.406	-45	65	120.7
WZ-10-24	645,137.54	5,408,703.95	408.066	-45	50	251.76
WZ-10-25	644,977.66	5,408,788.6	413.114	-45	50	236.52
WZ-10-26	644,977.66	5,408,788.6	413.114	-65	60	309.98
WZ-10-27	644,859.27	5,409,326.12	425.568	-45	65	242.5
WZ-10-28	644,938.2	5,408,870.66	417.919	-65	50	267.31
WZ-11-29	645,154.9	5,408,156.14	404.552	-50	50	535.67
WZ-11-30	645,219.84	5,408,620.47	405.425	-50	50	264.26
WZ-11-31	645,219.91	5,408,622.56	405.022	-50	90	242.93
WZ-11-32	644,820.43	5,409,116.07	418.11	-45	50	154.53

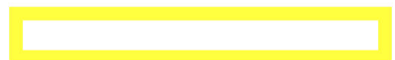


WOLF ZONE MINING CLAIM
SECTION 3 1069325



SYMBOL LEGEND

DIAMOND DRILL HOLE

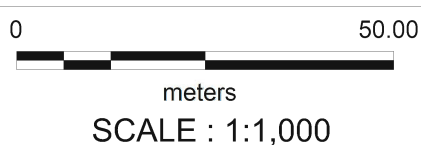


WOLF ZONE

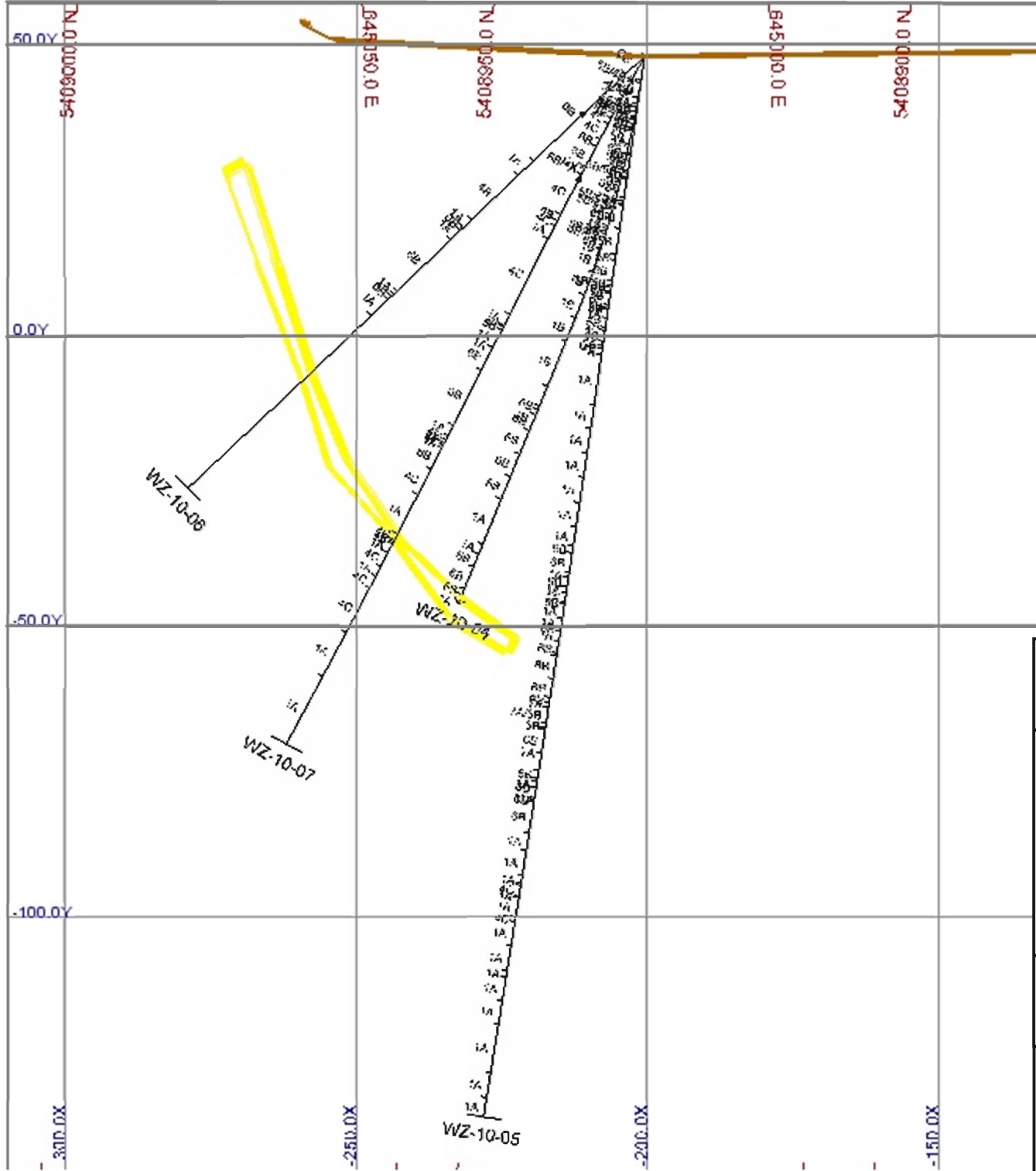
LITHOLOGY LEGEND

- 7 MAFIC DYKES
 - A DIAASE
 - B DIORITE
 - C LAMPROPHYRE
 - 6 INTERMEDIATE TO MAFIC DYKES
 - A DIORITE
 - B GABBRO
 - C AMPHIBOLITE
 - D PERIDOTITE
 - E INTERMEDIATE DYKE
 - F MAFIC DYKE
 - 5 FELSIC INTRUSIVES
 - A GRANITE
 - B GRANODIORITE
 - C QUARTZ MONZONITE
 - D SYANITE
 - 4 FELSIC PORPHYRITIC INTRUSIVES
 - A QUARTZ PORPHYRY
 - FELDSPAR PORPHYRY
 - C QUARTZ-FELDSPAR PORPHYRY
 - D FELSITE
 - E PEGMATITE
 - 3 SEDIMENTS
 - A GREYWACKE
 - B ARGILLITE
 - C CONGLOMERATE
 - D IRON FORMATION
 - F CHERT
 - 2 INTERMEDIATE TO FELSIC VOLCANICS
 - A FELSIC MASSIVE FLOWS
 - B FELSIC TUFF
 - C FELSIC LAPILLI TUFF
 - D INTERMEDIATE MASSIVE FLOWS
 - E INTERMEDIATE TUFF
 - F INTERMEDIATE LAPILLI TUFF
 - I FELSIT TO INTERMEDIATE VOLCANOCLASTICS
 - 1 MAFIC TO ULTRAMAFIC VOLCANICS
 - A MASSIVE FLOWS
 - B PILLOW FLOWS
 - C AGGLOMERATE
 - D VARIOLITIC FLOWS
 - E AMYGDUALOIDAL, VESICULAR FLOWS
 - F FLOW-TOP BRECCIAS
 - G AMPHIBOLITIC FLOWS
 - H MAFIC TUFF
 - I VOLCANOCLASTICS
 - U ULTRAMAFIC FLOWS
 - Z GABBROIC END MEMBER
- ABBREVIATIONS
 SH SHEAR ZONE
 MZ MINERALIZED ZONE
 FZ FAULT ZONE

HOLE_ID	EASTING	NORTHING	ELEVATION	DIP	AZ	DEPTH
WZ-10-01	645,034.05	5,409,014.32	422.736	-45	90	47.85
WZ-10-02	645,034.05	5,409,014.32	422.736	-65	90	78.33
WZ-10-03	645,015.86	5,408,931.31	415.91	-45	90	133.5
WZ-10-04	645,015.86	5,408,931.31	415.91	-65	90	135.33
WZ-10-05	645,015.86	5,408,931.31	415.91	-80	90	185.01
WZ-10-06	645,015.86	5,408,931.31	415.91	-45	40	108.51
WZ-10-07	645,015.86	5,408,931.31	415.91	-65	40	133.5
WZ-10-08	645,064.42	5,408,945.12	415.862	-45	90	68.58
WZ-10-09	644,983.9	5,409,013.78	422.736	-45	90	94.8
WZ-10-10	644,983.9	5,409,013.78	422.736	-65	90	137.4
WZ-10-11	644,983.9	5,409,013.78	422.736	-45	50	82.9
WZ-10-12	644,983.9	5,409,013.78	422.736	-65	50	92.6
WZ-10-13	645,098.36	5,408,879.2	410.077	-45	65	96.32
WZ-10-14	645,098.36	5,408,879.2	410.077	-65	65	96.62
WZ-10-15	644,889.65	5,409,088.75	419.607	-45	55	137.5
WZ-10-16	644,889.65	5,409,088.75	419.607	-65	55	204
WZ-10-17	645,054.03	5,408,840.54	409.159	-65	55	99.67
WZ-10-18	645,105.14	5,408,739.27	409.244	-45	50	190.5
WZ-10-19	645,105.14	5,408,739.27	409.244	-65	50	239.88
WZ-10-20	645,157.13	5,408,790.01	407.477	-45	50	109.75
WZ-10-21	644,902.96	5,408,958.68	423.563	-45	50	215.5
WZ-10-22	644,902.96	5,408,958.68	423.563	-60	50	194.5
WZ-10-23	645,181.8	5,408,746.21	410.406	-45	65	120.7
WZ-10-24	645,137.54	5,408,703.95	408.066	-45	50	251.76
WZ-10-25	644,977.66	5,408,788.6	413.114	-45	50	236.52
WZ-10-26	644,977.66	5,408,788.6	413.114	-65	60	309.98
WZ-10-27	644,859.27	5,409,326.12	425.568	-45	65	242.5
WZ-10-28	644,938.2	5,408,870.66	417.919	-65	50	267.31
WZ-11-29	645,154.9	5,408,156.14	404.552	-50	50	535.67
WZ-11-30	645,219.84	5,408,620.47	405.425	-50	50	264.26
WZ-11-31	645,219.91	5,408,622.56	405.022	-50	90	242.93
WZ-11-32	644,820.43	5,409,116.07	418.11	-45	50	154.53



WOLF ZONE MINING CLAIM
SECTION 4 1069325



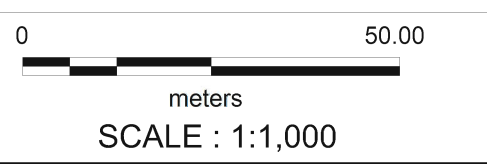
SYMBOL LEGEND

- DIAMOND DRILL HOLE
- ▭ WOLF ZONE

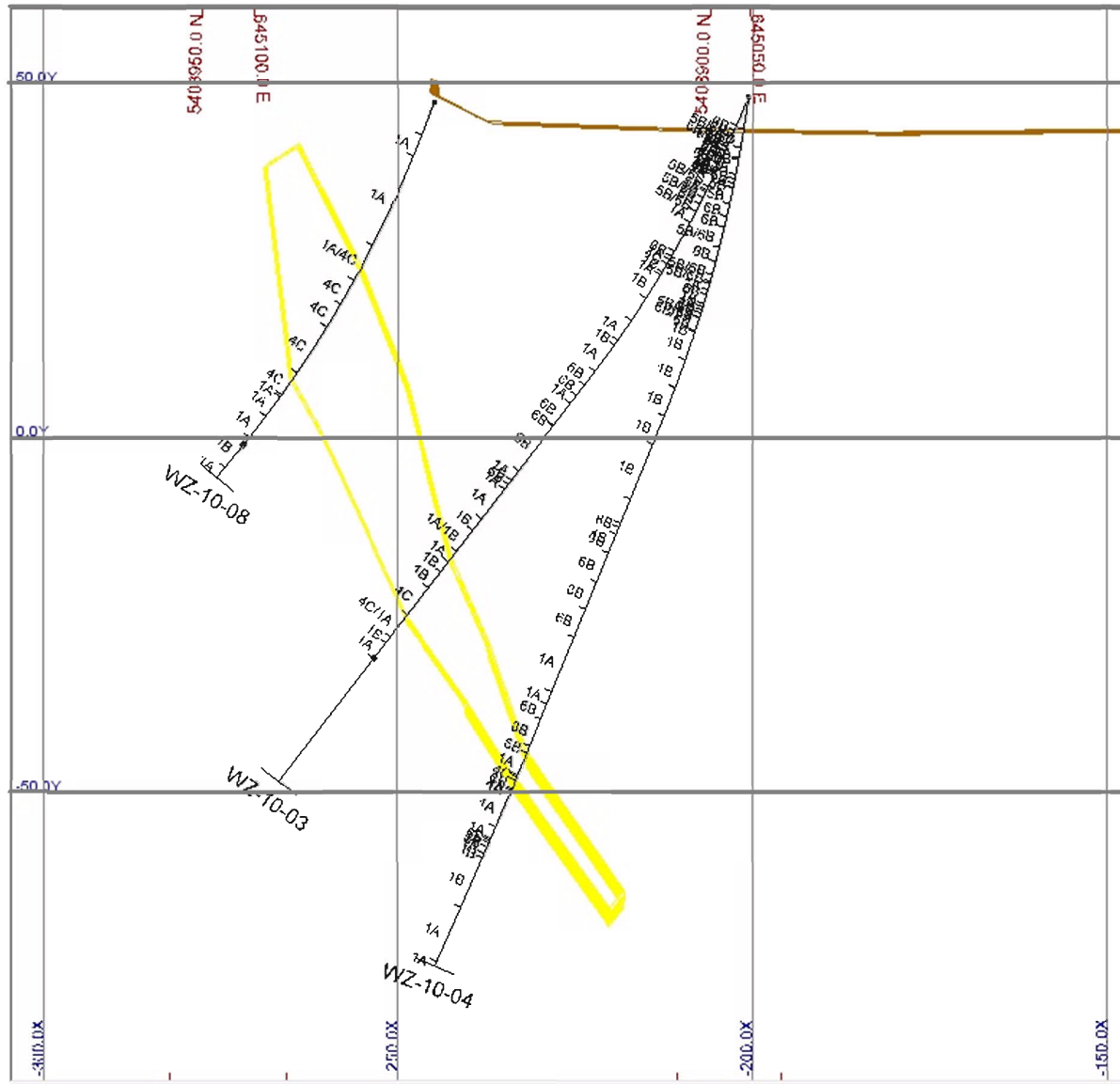
LITHOLOGY LEGEND

- 7 MAFIC DYKES
 - A DIAASE
 - B DIORITE
 - C LAMPORPHYRE
- 6 INTERMEDIATE TO MAFIC DYKES
 - A DIORITE
 - B GABBRO
 - C AMPHIBOLITE
 - D PERIDOTITE
 - E INTERMEDIATE DYKE
 - F MAFIC DYKE
- 5 FELSIC INTRUSIVES
 - A GRANITE
 - B GRANODIORITE
 - C QUARTZ MONZONITE
 - D SYANITE
- 4 FELSIC PORPHYRITIC INTRUSIVES
 - A QUARTZ PORPHYRY
 - FELDSPAR PORPHYRY
 - C QUARTZ-FELDSPAR PORPHYRY
 - D FELSITE
 - E PEGMATITE
- 3 SEDIMENTS
 - A GREYWACKE
 - B ARGILLITE
 - C CONGLOMERATE
 - D IRON FORMATION
 - F CHERT
- 2 INTERMEDIATE TO FELSIC VOLCANICS
 - A FELSIC MASSIVE FLOWS
 - B FELSIC TUFF
 - C FELSIC LAPILLI TUFF
 - D INTERMEDIATE MASSIVE FLOWS
 - E INTERMEDIATE TUFF
 - F INTERMEDIATE LAPILLI TUFF
 - I FELSIT TO INTERMEDIATE VOLCANOCLASTICS
- 1 MAFIC TO ULTRAMAFIC VOLCANICS
 - A MASSIVE FLOWS
 - B PILLOW FLOWS
 - C AGGLOMERATE
 - D VARIOLITIC FLOWS
 - E AMYGDUALOIDAL, VESICULAR FLOWS
 - F FLOW-TOP BRECCIAS
 - G AMPHIBOLITIC FLOWS
 - H MAFIC TUFF
 - I VOLCANOCLASTICS
 - U ULTRAMAFIC FLOWS
 - Z GABBROIC END MEMBER
- ABBREVIATIONS
 - SH SHEAR ZONE
 - MZ MINERALIZED ZONE
 - FZ FAULT ZONE

HOLE_ID	EASTING	NORTHING	ELEVATION	DIP	AZ	DEPTH
WZ-10-01	645,034.05	5,409,014.32	422.736	-45	90	47.85
WZ-10-02	645,034.05	5,409,014.32	422.736	-65	90	78.33
WZ-10-03	645,015.86	5,408,931.31	415.91	-45	90	133.5
WZ-10-04	645,015.86	5,408,931.31	415.91	-65	90	135.33
WZ-10-05	645,015.86	5,408,931.31	415.91	-80	90	185.01
WZ-10-06	645,015.86	5,408,931.31	415.91	-45	40	108.51
WZ-10-07	645,015.86	5,408,931.31	415.91	-65	40	133.5
WZ-10-08	645,064.42	5,408,945.12	415.862	-45	90	68.58
WZ-10-09	644,983.9	5,409,013.78	422.736	-45	90	94.8
WZ-10-10	644,983.9	5,409,013.78	422.736	-65	90	137.4
WZ-10-11	644,983.9	5,409,013.78	422.736	-45	50	82.9
WZ-10-12	644,983.9	5,409,013.78	422.736	-65	50	92.6
WZ-10-13	645,098.36	5,408,879.2	410.077	-45	65	96.32
WZ-10-14	645,098.36	5,408,879.2	410.077	-65	65	96.62
WZ-10-15	644,889.65	5,409,088.75	419.607	-45	55	137.5
WZ-10-16	644,889.65	5,409,088.75	419.607	-65	55	204
WZ-10-17	645,054.03	5,408,840.54	409.159	-65	55	99.67
WZ-10-18	645,105.14	5,408,739.27	409.244	-45	50	190.5
WZ-10-19	645,105.14	5,408,739.27	409.244	-65	50	239.88
WZ-10-20	645,157.13	5,408,790.01	407.477	-45	50	109.75
WZ-10-21	644,902.96	5,408,958.68	423.563	-45	50	215.5
WZ-10-22	644,902.96	5,408,958.68	423.563	-60	50	194.5
WZ-10-23	645,181.8	5,408,746.21	410.406	-45	65	120.7
WZ-10-24	645,137.54	5,408,703.95	408.066	-45	50	251.76
WZ-10-25	644,977.66	5,408,788.6	413.114	-45	50	236.52
WZ-10-26	644,977.66	5,408,788.6	413.114	-65	60	309.98
WZ-10-27	644,859.27	5,409,326.12	425.568	-45	65	242.5
WZ-10-28	644,938.2	5,408,870.66	417.919	-65	50	267.31
WZ-11-29	645,154.9	5,408,156.14	404.552	-50	50	535.67
WZ-11-30	645,219.84	5,408,620.47	405.425	-50	50	264.26
WZ-11-31	645,219.91	5,408,622.56	405.022	-50	90	242.93
WZ-11-32	644,820.43	5,409,116.07	418.11	-45	50	154.53

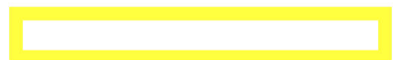


WOLF ZONE MINING CLAIM
SECTION 5 1069325



SYMBOL LEGEND

DIAMOND DRILL HOLE

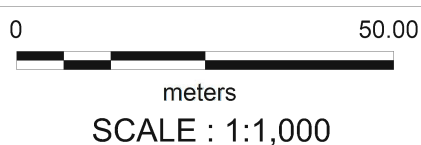


WOLF ZONE

LITHOLOGY LEGEND

- 7 MAFIC DYKES
 - A DIAASE
 - B DIORITE
 - C LAMPORPHYRE
 - 6 INTERMEDIATE TO MAFIC DYKES
 - A DIORITE
 - B GABBRO
 - C AMPHIBOLITE
 - D PERIDOTITE
 - E INTERMEDIATE DYKE
 - F MAFIC DYKE
 - 5 FELSIC INTRUSIVES
 - A GRANITE
 - B GRANODIORITE
 - C QUARTZ MONZONITE
 - D SYANITE
 - 4 FELSIC PORPHYRITIC INTRUSIVES
 - A QUARTZ PORPHYRY
 - FELDSPAR PORPHYRY
 - C QUARTZ-FELDSPAR PORPHYRY
 - D FELSITE
 - E PEGMATITE
 - 3 SEDIMENTS
 - A GREYWACKE
 - B ARGILLITE
 - C CONGLOMERATE
 - D IRON FORMATION
 - F CHERT
 - 2 INTERMEDIATE TO FELSIC VOLCANICS
 - A FELSIC MASSIVE FLOWS
 - B FELSIC TUFF
 - C FELSIC LAPILLI TUFF
 - D INTERMEDIATE MASSIVE FLOWS
 - E INTERMEDIATE TUFF
 - F INTERMEDIATE LAPILLI TUFF
 - I FELSIT TO INTERMEDIATE VOLCANOCLASTICS
 - 1 MAFIC TO ULTRAMAFIC VOLCANICS
 - A MASSIVE FLOWS
 - B PILLOW FLOWS
 - C AGGLOMERATE
 - D VARIOLITIC FLOWS
 - E AMYGDUALOIDAL, VESICULAR FLOWS
 - F FLOW-TOP BRECCIAS
 - G AMPHIBOLITIC FLOWS
 - H MAFIC TUFF
 - I VOLCANOCLASTICS
 - U ULTRAMAFIC FLOWS
 - Z GABBROIC END MEMBER
- ABBREVIATIONS
 SH SHEAR ZONE
 MZ MINERALIZED ZONE
 FZ FAULT ZONE

HOLE_ID	EASTING	NORTHING	ELEVATION	DIP	AZ	DEPTH
WZ-10-01	645,034.05	5,409,014.32	422.736	-45	90	47.85
WZ-10-02	645,034.05	5,409,014.32	422.736	-65	90	78.33
WZ-10-03	645,015.86	5,408,931.31	415.91	-45	90	133.5
WZ-10-04	645,015.86	5,408,931.31	415.91	-65	90	135.33
WZ-10-05	645,015.86	5,408,931.31	415.91	-80	90	185.01
WZ-10-06	645,015.86	5,408,931.31	415.91	-45	40	108.51
WZ-10-07	645,015.86	5,408,931.31	415.91	-65	40	133.5
WZ-10-08	645,064.42	5,408,945.12	415.862	-45	90	68.58
WZ-10-09	644,983.9	5,409,013.78	422.736	-45	90	94.8
WZ-10-10	644,983.9	5,409,013.78	422.736	-65	90	137.4
WZ-10-11	644,983.9	5,409,013.78	422.736	-45	50	82.9
WZ-10-12	644,983.9	5,409,013.78	422.736	-65	50	92.6
WZ-10-13	645,098.36	5,408,879.2	410.077	-45	65	96.32
WZ-10-14	645,098.36	5,408,879.2	410.077	-65	65	96.62
WZ-10-15	644,889.65	5,409,088.75	419.607	-45	55	137.5
WZ-10-16	644,889.65	5,409,088.75	419.607	-65	55	204
WZ-10-17	645,054.03	5,408,840.54	409.159	-65	55	99.67
WZ-10-18	645,105.14	5,408,739.27	409.244	-45	50	190.5
WZ-10-19	645,105.14	5,408,739.27	409.244	-65	50	239.88
WZ-10-20	645,157.13	5,408,790.01	407.477	-45	50	109.75
WZ-10-21	644,902.96	5,408,958.68	423.563	-45	50	215.5
WZ-10-22	644,902.96	5,408,958.68	423.563	-60	50	194.5
WZ-10-23	645,181.8	5,408,746.21	410.406	-45	65	120.7
WZ-10-24	645,137.54	5,408,703.95	408.066	-45	50	251.76
WZ-10-25	644,977.66	5,408,788.6	413.114	-45	50	236.52
WZ-10-26	644,977.66	5,408,788.6	413.114	-65	60	309.98
WZ-10-27	644,859.27	5,409,326.12	425.568	-45	65	242.5
WZ-10-28	644,938.2	5,408,870.66	417.919	-65	50	267.31
WZ-11-29	645,154.9	5,408,156.14	404.552	-50	50	535.67
WZ-11-30	645,219.84	5,408,620.47	405.425	-50	50	264.26
WZ-11-31	645,219.91	5,408,622.56	405.022	-50	90	242.93
WZ-11-32	644,820.43	5,409,116.07	418.11	-45	50	154.53



WOLF ZONE MINING CLAIM
SECTION 6 1069325