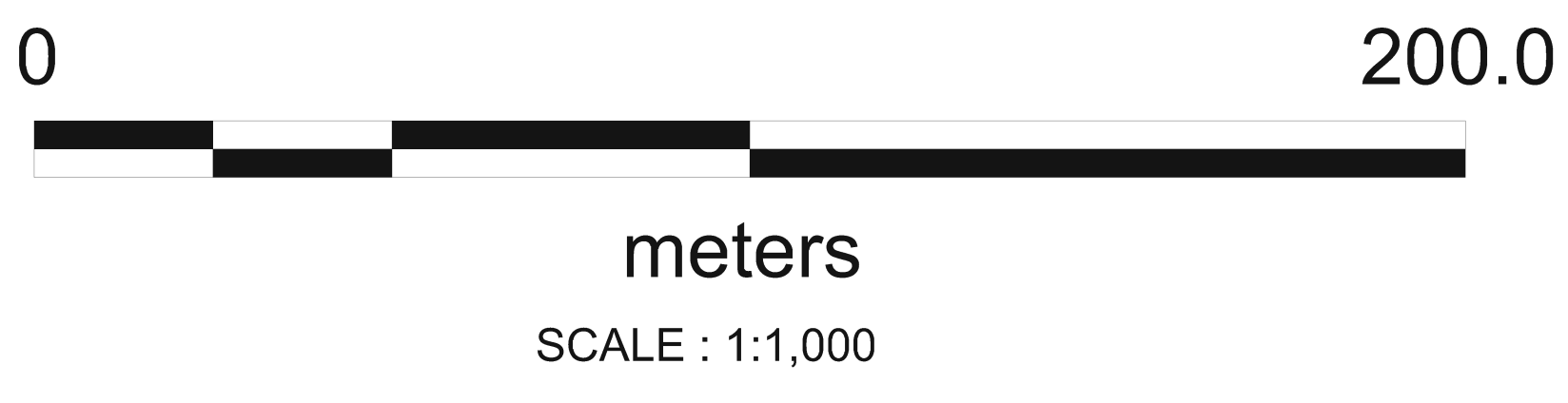


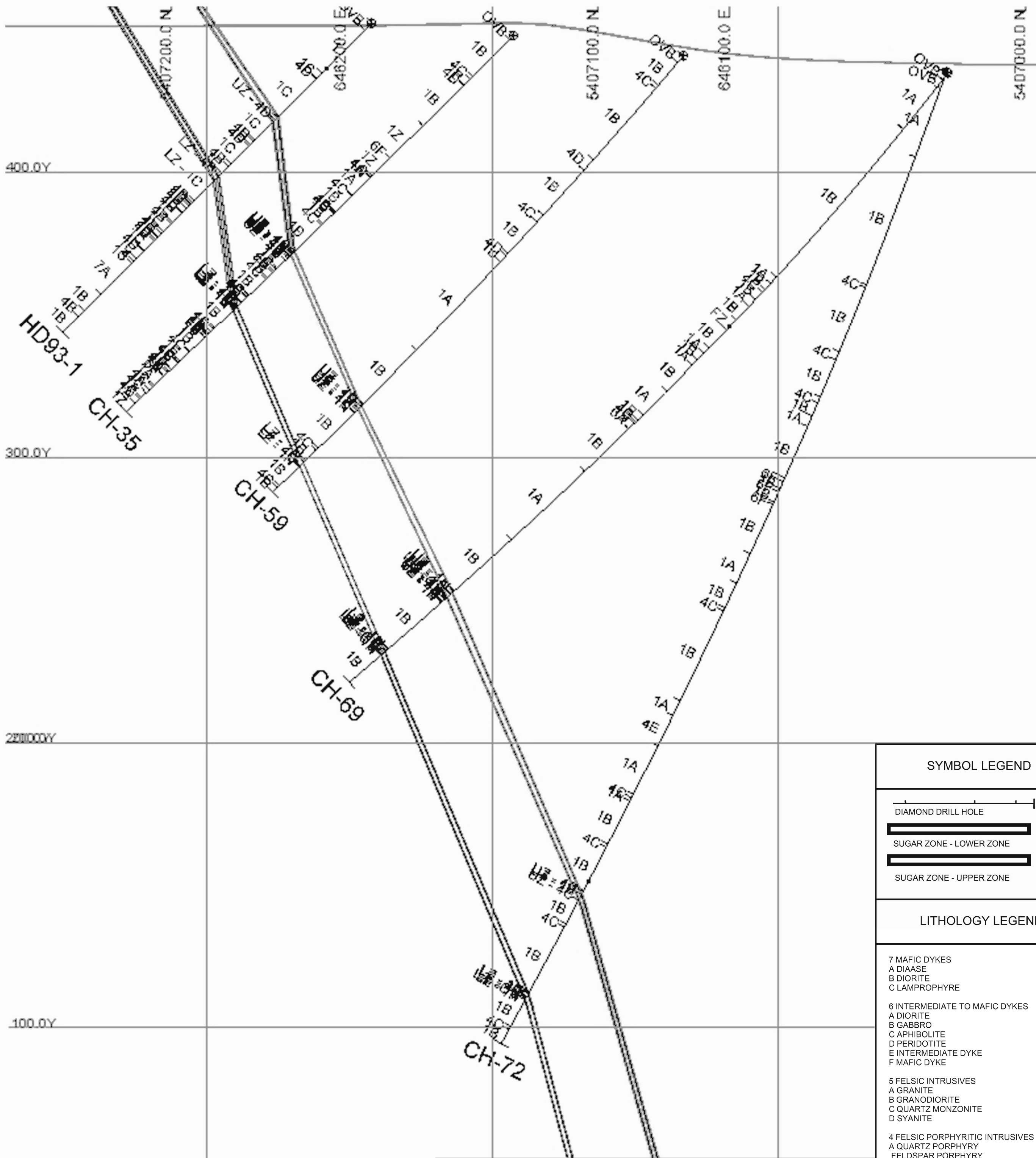
SYMBOL LEGEND	
	DIAMOND DRILL HOLE
	SUGAR ZONE - LOWER ZONE
	SUGAR ZONE - UPPER ZONE

LITHOLOGY LEGEND	
7	MAFIC DYKES
A	DIABASE
B	DIORITE
C	LAMPORPHYRE
6	INTERMEDIATE TO MAFIC DYKES
A	DIORITE
B	GABBRO
C	AMPHIBOLITE
D	PERIDOTITE
E	INTERMEDIATE DYKE
F	MAFIC DYKE
5	FELSIC INTRUSIVES
A	GRANITE
B	GRANODIORITE
C	QUARTZ MONZONITE
D	DYABASE
4	FELSIC PORPHYRITIC INTRUSIVES
A	QUARTZ PORPHYRY
B	FELDSPAR PORPHYRY
C	QUARTZ-FELDSPAR PORPHYRY
D	FELSITE
E	PEGMATITE
3	SEDIMENTS
A	GREYWACKE
B	ARGILLITE
C	CONGLOMERATE
D	IRON FORMATION
F	CHERT
2	INTERMEDIATE TO FELSIC VOLCANICS
A	FELSIC MASSIVE FLOWS
B	FELSIC TUFF
C	FELSIC LAPILLI TUFF
D	INTERMEDIATE MASSIVE FLOWS
E	INTERMEDIATE TUFF
F	INTERMEDIATE LAPILLI TUFF
I	FELSIC TO INTERMEDIATE VOLCANOCLASTICS
1	MAFIC TO ULTRAMAFIC VOLCANICS
A	MASSIVE FLOWS
B	FLOW FLOWS
C	AGGLOMERATE
D	ARGILLITE FLOWS
E	AMYGDALOIDAL VESICULAR FLOWS
F	FLOW TOP BRECCIAS
G	MAFIC TUFF
H	AMPHIBOLITIC FLOWS
I	VOLCANOCLASTICS
U	ULTRAMAFIC FLOWS
Z	GABBROIC END MEMBER
ABBREVIATIONS	
SH	SHEAR ZONE
MZ	MINERALIZED ZONE
EZ	FAULT ZONE



HOLE_ID	EASTING	NORTHING	ELEVATION	DIP	AZ	DEPTH
SZ-11-01	645,924.95	5,407,509.64	414.851	-70	50	114.91
SZ-11-02	645,979.03	5,407,450.69	427.403	-50	50	105.77
SZ-11-03	645,894.89	5,407,427.09	423.741	-70	50	221.59
SZ-11-04	645,762.94	5,407,444.69	408.423	-50	50	291.09
SZ-11-05	646,055.97	5,407,374.18	456.208	-45	50	90.24
SZ-11-06	646,032.3	5,407,033.49	434.232	-58	50	370.94
SZ-11-07	646,165.47	5,407,209.48	458.312	-50	50	232.13
SZ-11-08	646,216.59	5,407,048.92	447.651	-50	50	160.37
SZ-11-09	645,748.2	5,407,040.88	424.07	-70	50	683.85
SZ-11-10	646,256.83	5,407,153.05	457.27	-45	50	82.8
SZ-11-11	646,947.99	5,407,165.7	442.978	-55	50	232.23
SZ-11-12	646,046.93	5,407,165.4	442.705	-70	50	273.78
SZ-11-13	645,937.77	5,407,208.49	431.709	-55	50	270.43
SZ-11-14	645,888.18	5,406,707.27	435.843	-70	50	747
SZ-11-15	645,937.97	5,407,208.35	432.083	-70	50	334.37
SZ-11-16	645,893.45	5,407,307.95	419.699	-60	50	224.49
SZ-11-17	646,181.06	5,406,943.72	440.1	-55	50	297.79
SZ-11-18	645,793.34	5,407,216.61	409.988	-70	50	444.09
SZ-11-19	645,877.85	5,406,886.89	436.699	-70	50	624.09
SZ-11-20	645,712.42	5,407,212.06	408.897	-70	50	612.57
SZ-11-21	645,826.81	5,407,284.27	410.873	-55	50	348.89
SZ-11-22	646,478.25	5,406,624.50	463.597	-50	50	245.36
SZ-11-23	646,518.69	5,406,782.34	461.613	-55	50	208.79
SZ-11-24	646,451.89	5,406,725.29	451.076	-55	50	185.42
SZ-11-25	646,442.35	5,406,656.6	467.394	-50	50	117.65
SZ-11-26	646,477.14	5,407,327.12	456.005	-45	60	218.54
SZ-11-27	646,599.16	5,407,150.41	450.172	-45	60	155.75
JB-11-01	645,990	5,407,592	423	-45	45	86.16
JB-11-02	645,990	5,407,592	423	-55	45	89.2

SUGAR ZONE MINING CLAIM
SECTION 10NW 1135498



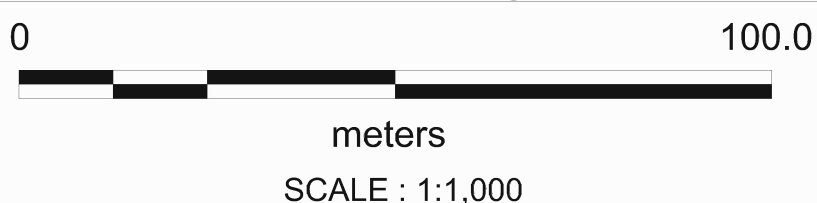
SYMBOL LEGEND

- DIAMOND DRILL HOLE
- SUGAR ZONE - LOWER ZONE
- SUGAR ZONE - UPPER ZONE

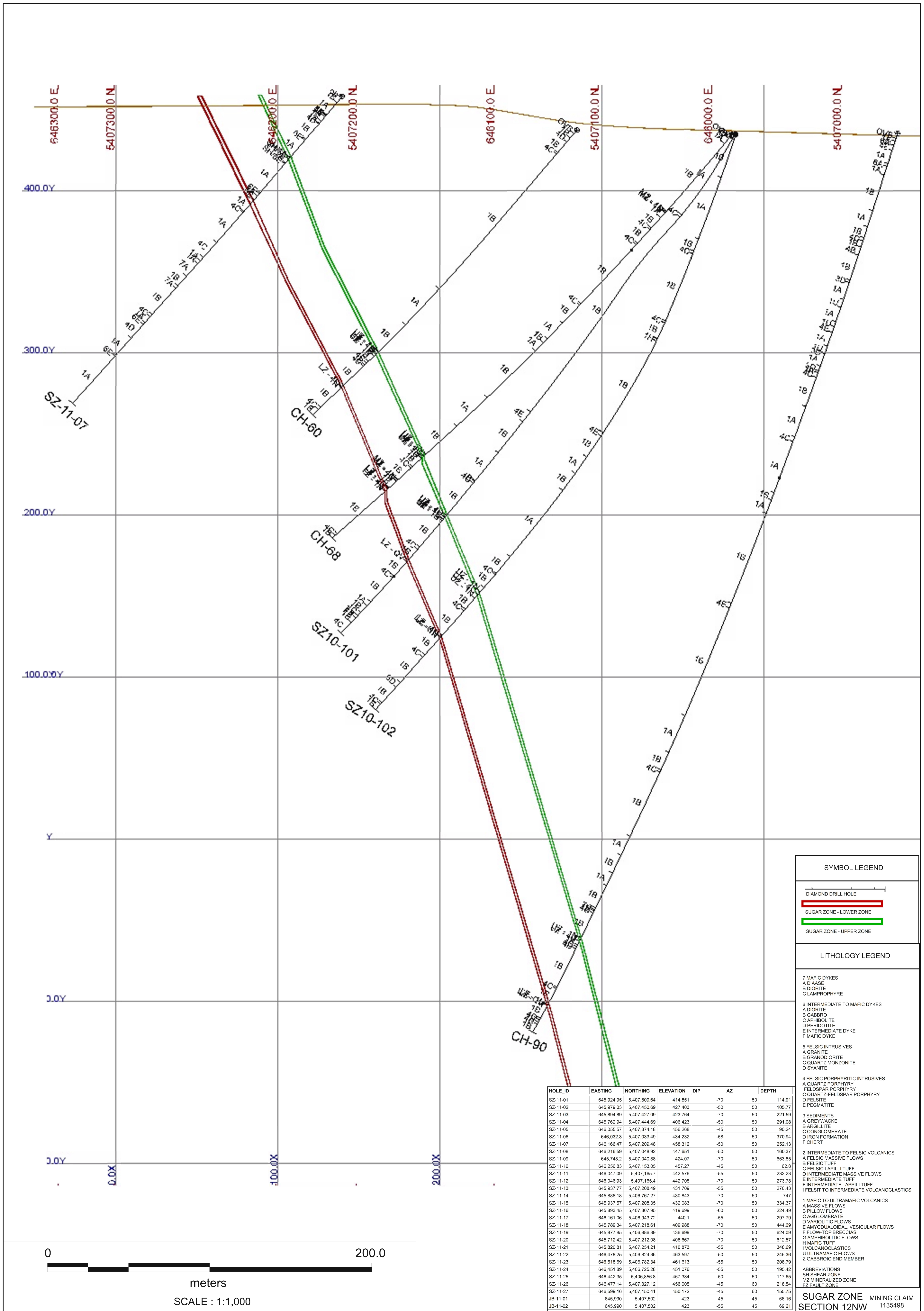
LITHOLOGY LEGEND

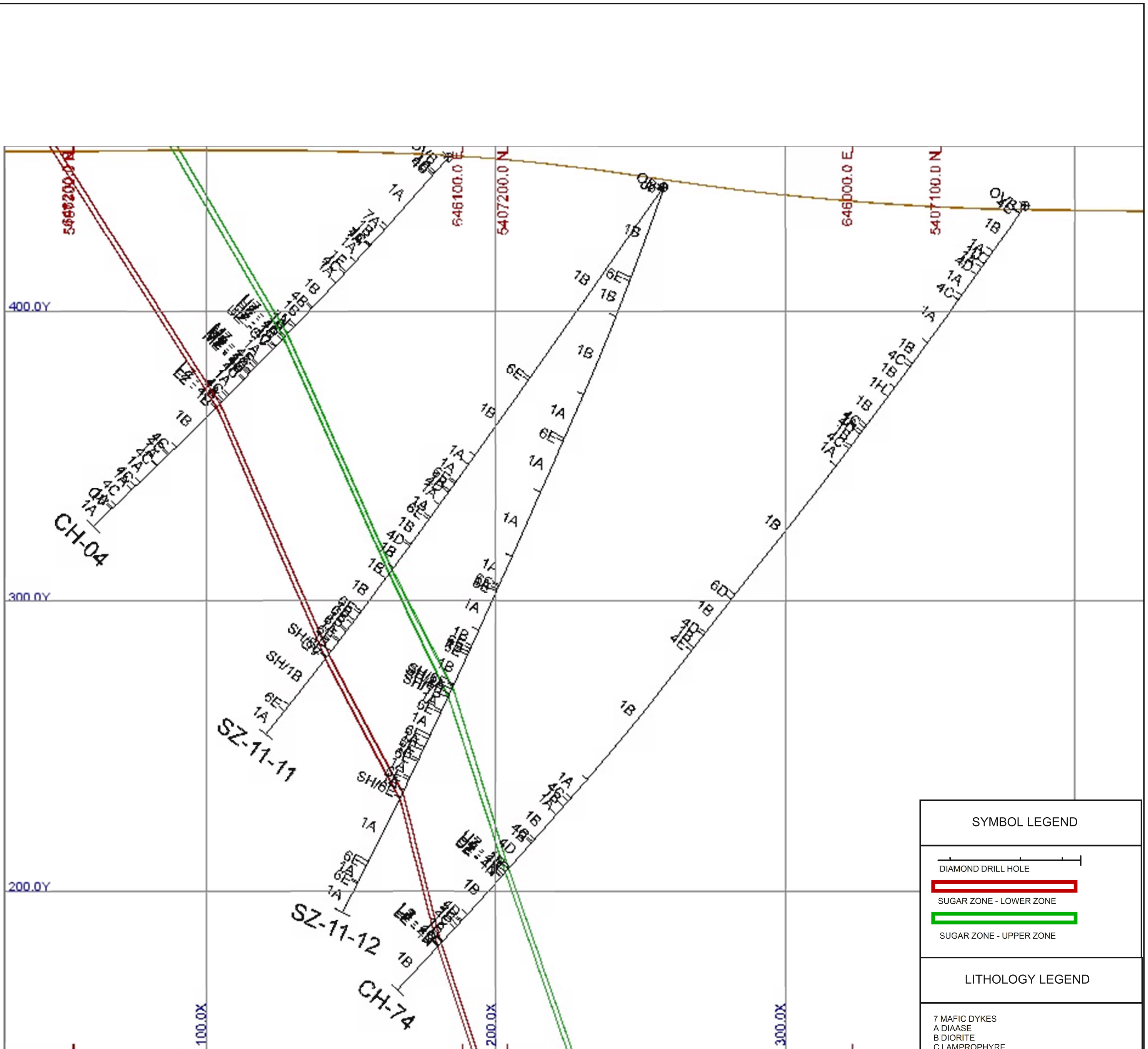
- 7 MAFIC DYKES
 - A DIAASE
 - B DIORITE
 - C LAMPORPHYRE
- 6 INTERMEDIATE TO MAFIC DYKES
 - A DIORITE
 - B GABBRO
 - C AMPHIBOLITE
 - D PERIDOTITE
 - E INTERMEDIATE DYKE
 - F MAFIC DYKE
- 5 FELSIC INTRUSIVES
 - A GRANITE
 - B GRANODIORITE
 - C QUARTZ MONZONITE
 - D SYANITE
- 4 FELSIC PORPHYRITIC INTRUSIVES
 - A QUARTZ PORPHYRY
 - FELDSPAR PORPHYRY
 - C QUARTZ-FELDSPAR PORPHYRY
 - D FELSITE
 - E PEGMATITE
- 3 SEDIMENTS
 - A GREYWACKE
 - B ARGILLITE
 - C CONGLOMERATE
 - D IRON FORMATION
 - F CHERT
- 2 INTERMEDIATE TO FELSIC VOLCANICS
 - A FELSIC MASSIVE FLOWS
 - B FELSIC TUFF
 - C FELSIC LAPILLI TUFF
 - D INTERMEDIATE MASSIVE FLOWS
 - E INTERMEDIATE TUFF
 - F INTERMEDIATE LAPILLI TUFF
 - I FELSIT TO INTERMEDIATE VOLCANOCLASTICS
- 1 MAFIC TO ULTRAMAFIC VOLCANICS
 - A MASSIVE FLOWS
 - B PILLOW FLOWS
 - C AGGLOMERATE
 - D VARIOLITIC FLOWS
 - E AMYGDUALOIDAL, VESICULAR FLOWS
 - F FLOW-TOP BRECCIAS
 - G AMPHIBOLITIC FLOWS
 - H MAFIC TUFF
 - I VOLCANOCLASTICS
 - U ULTRAMAFIC FLOWS
 - Z GABBROIC END MEMBER
- ABBREVIATIONS
 - SH SHEAR ZONE
 - MZ MINERALIZED ZONE
 - FZ FAULT ZONE

HOLE_ID	EASTING	NORTHING	ELEVATION	DIP	AZ	DEPTH
SZ-11-01	645,924.95	5,407,509.64	414.851	-70	50	114.91
SZ-11-02	645,979.03	5,407,450.69	427.403	-50	50	105.77
SZ-11-03	645,894.89	5,407,427.09	423.764	-70	50	221.59
SZ-11-04	645,762.94	5,407,444.69	406.423	-50	50	291.08
SZ-11-05	646,055.57	5,407,374.18	456.268	-45	50	90.24
SZ-11-06	646,032.3	5,407,033.49	434.232	-58	50	370.94
SZ-11-07	646,166.47	5,407,209.48	458.312	-50	50	252.13
SZ-11-08	646,216.59	5,407,048.92	447.651	-50	50	160.37
SZ-11-09	645,748.2	5,407,040.88	424.07	-70	50	663.85
SZ-11-10	646,256.83	5,407,153.05	457.27	-45	50	62.8
SZ-11-11	646,047.09	5,407,165.7	442.576	-55	50	233.23
SZ-11-12	646,046.93	5,407,165.4	442.705	-70	50	273.78
SZ-11-13	645,937.77	5,407,208.49	431.709	-55	50	270.43
SZ-11-14	645,888.18	5,406,767.27	430.843	-70	50	747
SZ-11-15	645,937.57	5,407,208.35	432.083	-70	50	334.37
SZ-11-16	645,893.45	5,407,307.95	419.699	-60	50	224.49
SZ-11-17	646,161.06	5,406,943.72	440.1	-55	50	297.79
SZ-11-18	645,789.34	5,407,218.61	409.988	-70	50	444.09
SZ-11-19	645,877.85	5,406,886.89	436.699	-70	50	624.09
SZ-11-20	645,712.42	5,407,212.08	408.667	-70	50	612.57
SZ-11-21	645,820.81	5,407,254.21	410.873	-55	50	348.69
SZ-11-22	646,478.25	5,406,824.36	463.597	-50	50	245.36
SZ-11-23	646,518.69	5,406,782.34	461.613	-55	50	208.79
SZ-11-24	646,451.89	5,406,725.28	451.076	-55	50	195.42
SZ-11-25	646,442.35	5,406,856.8	467.384	-50	50	117.65
SZ-11-26	646,477.14	5,407,327.12	456.005	-45	60	218.54
SZ-11-27	646,599.16	5,407,150.41	450.172	-45	60	155.75
JB-11-01	645,990	5,407,502	423	-45	45	66.16
JB-11-02	645,990	5,407,502	423	-55	45	69.21



SUGAR ZONE MINING CLAIM SECTION 11NW 1135498





SYMBOL LEGEND

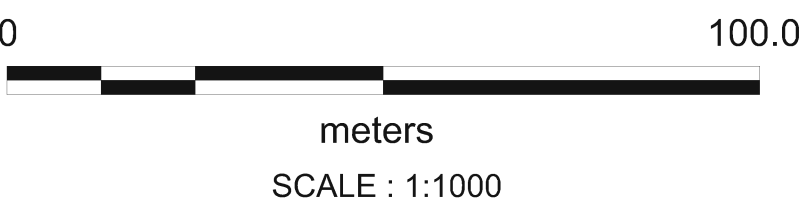
- DIAMOND DRILL HOLE
- SUGAR ZONE - LOWER ZONE
- SUGAR ZONE - UPPER ZONE

LITHOLOGY LEGEND

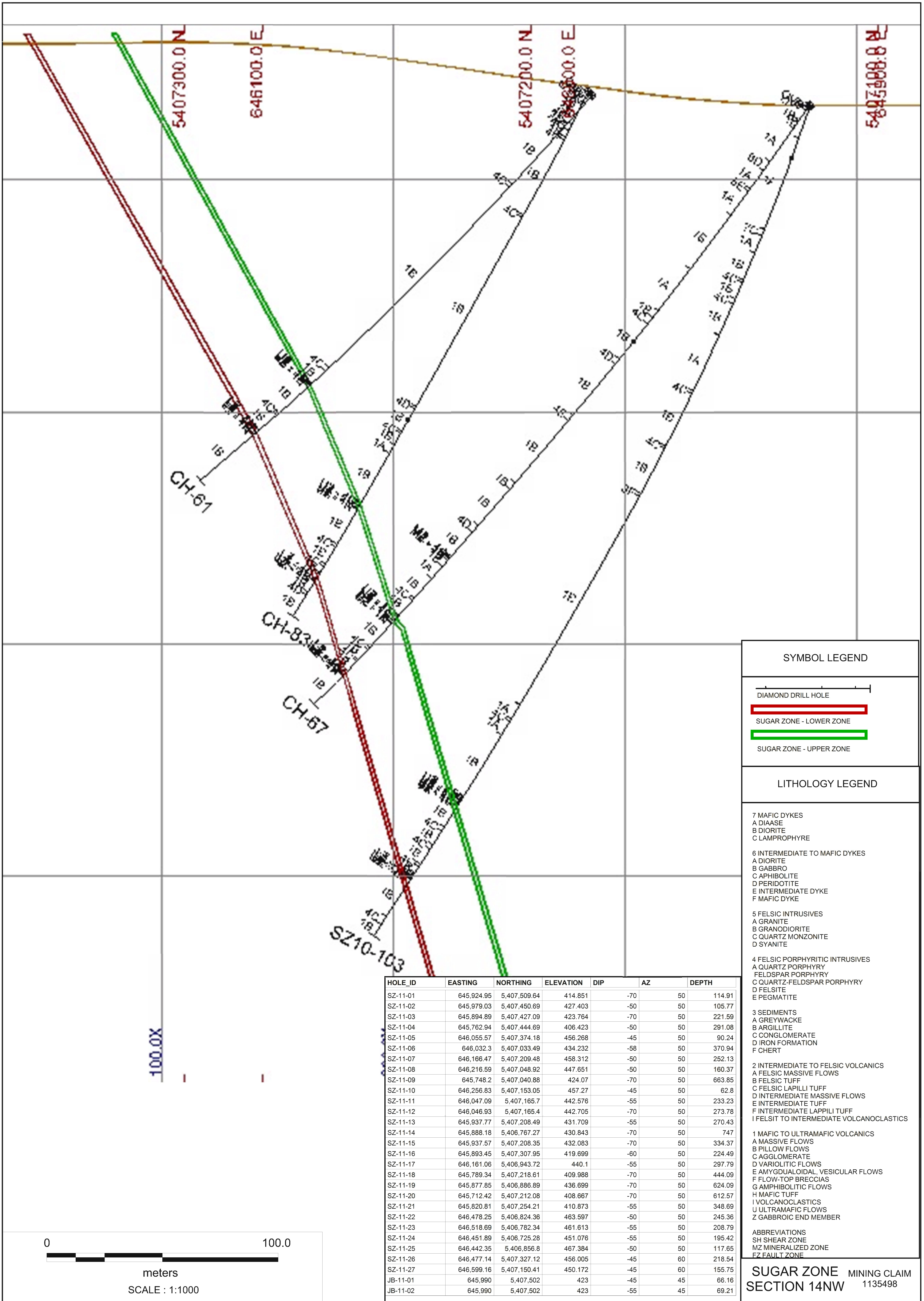
- 7 MAFIC DYKES
 - A DIAASE
 - B DIORITE
 - C LAMPORPHYRE
- 6 INTERMEDIATE TO MAFIC DYKES
 - A DIORITE
 - B GABBRO
 - C AMPHIBOLITE
 - D PERIDOTITE
 - E INTERMEDIATE DYKE
 - F MAFIC DYKE
- 5 FELSIC INTRUSIVES
 - A GRANITE
 - B GRANODIORITE
 - C QUARTZ MONZONITE
 - D SYANITE
- 4 FELSIC PORPHYRITIC INTRUSIVES
 - A QUARTZ PORPHYRY
 - FELDSPAR PORPHYRY
 - C QUARTZ-FELDSPAR PORPHYRY
 - D FELSITE
 - E PEGMATITE
- 3 SEDIMENTS
 - A GREYWACKE
 - B ARGILLITE
 - C CONGLOMERATE
 - D IRON FORMATION
 - F CHERT
- 2 INTERMEDIATE TO FELSIC VOLCANICS
 - A FELSIC MASSIVE FLOWS
 - B FELSIC TUFF
 - C FELSIC LAPILLI TUFF
 - D INTERMEDIATE MASSIVE FLOWS
 - E INTERMEDIATE TUFF
 - F INTERMEDIATE LAPILLI TUFF
 - I FELSIT TO INTERMEDIATE VOLCANOCLASTICS
- 1 MAFIC TO ULTRAMAFIC VOLCANICS
 - A MASSIVE FLOWS
 - B PILLOW FLOWS
 - C AGGLOMERATE
 - D VARIOLITIC FLOWS
 - E AMYGDUALOIDAL, VESICULAR FLOWS
 - F FLOW-TOP BRECCIAS
 - G AMPHIBOLITIC FLOWS
 - H MAFIC TUFF
 - I VOLCANOCLASTICS
 - U ULTRAMAFIC FLOWS
 - Z GABBROIC END MEMBER

ABBREVIATIONS
 SH SHEAR ZONE
 MZ MINERALIZED ZONE
 FZ FAULT ZONE

HOLE_ID	EASTING	NORTHING	ELEVATION	DIP	AZ	DEPTH
SZ-11-01	645,924.95	5,407,509.64	414.851	-70	50	114.91
SZ-11-02	645,979.03	5,407,450.69	427.403	-50	50	105.77
SZ-11-03	645,894.89	5,407,427.09	423.764	-70	50	221.59
SZ-11-04	645,762.94	5,407,444.69	406.423	-50	50	291.08
SZ-11-05	646,055.57	5,407,374.18	456.268	-45	50	90.24
SZ-11-06	646,032.3	5,407,033.49	434.232	-58	50	370.94
SZ-11-07	646,166.47	5,407,209.48	458.312	-50	50	252.13
SZ-11-08	646,216.59	5,407,048.92	447.651	-50	50	160.37
SZ-11-09	645,748.2	5,407,040.88	424.07	-70	50	663.85
SZ-11-10	646,256.83	5,407,153.05	457.27	-45	50	62.8
SZ-11-11	646,047.09	5,407,165.7	442.576	-55	50	233.23
SZ-11-12	646,046.93	5,407,165.4	442.705	-70	50	273.78
SZ-11-13	645,937.77	5,407,208.49	431.709	-55	50	270.43
SZ-11-14	645,888.18	5,406,767.27	430.843	-70	50	747
SZ-11-15	645,937.57	5,407,208.35	432.083	-70	50	334.37
SZ-11-16	645,893.45	5,407,307.95	419.699	-60	50	224.49
SZ-11-17	646,161.06	5,406,943.72	440.1	-55	50	297.79
SZ-11-18	645,789.34	5,407,218.61	409.988	-70	50	444.09
SZ-11-19	645,877.85	5,406,886.89	436.699	-70	50	624.09
SZ-11-20	645,712.42	5,407,212.08	408.667	-70	50	612.57
SZ-11-21	645,820.81	5,407,254.21	410.873	-55	50	348.69
SZ-11-22	646,478.25	5,406,824.36	463.597	-50	50	245.36
SZ-11-23	646,518.69	5,406,782.34	461.613	-55	50	208.79
SZ-11-24	646,451.89	5,406,725.28	451.076	-55	50	195.42
SZ-11-25	646,442.35	5,406,856.8	467.384	-50	50	117.65
SZ-11-26	646,477.14	5,407,327.12	456.005	-45	60	218.54
SZ-11-27	646,599.16	5,407,150.41	450.172	-45	60	155.75
JB-11-01	645,990	5,407,502	423	-45	45	66.16
JB-11-02	645,990	5,407,502	423	-55	45	69.21



SUGAR ZONE MINING CLAIM SECTION 13NW 1135498



SYMBOL LEGEND

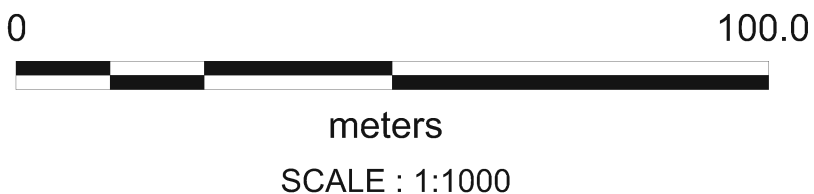
- DIAMOND DRILL HOLE
- SUGAR ZONE - LOWER ZONE
- SUGAR ZONE - UPPER ZONE

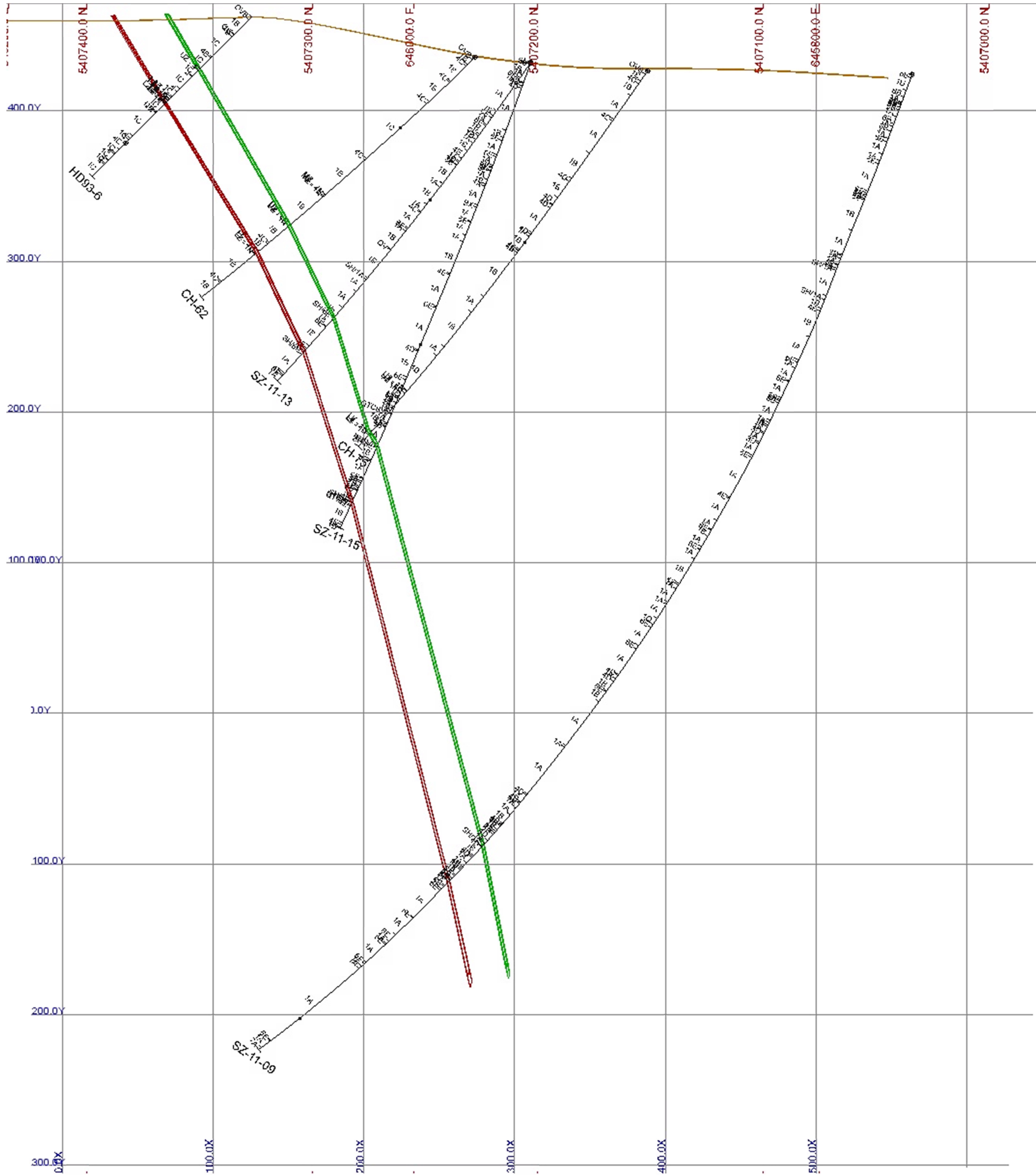
LITHOLOGY LEGEND

- 7 MAFIC DYKES
 - A DIAASE
 - B DIORITE
 - C LAMPORPHYRE
 - 6 INTERMEDIATE TO MAFIC DYKES
 - A DIORITE
 - B GABBRO
 - C AMPHIBOLITE
 - D PERIDOTITE
 - E INTERMEDIATE DYKE
 - F MAFIC DYKE
 - 5 FELSIC INTRUSIVES
 - A GRANITE
 - B GRANODIORITE
 - C QUARTZ MONZONITE
 - D SYANITE
 - 4 FELSIC PORPHYRITIC INTRUSIVES
 - A QUARTZ PORPHYRY
 - FELDSPAR PORPHYRY
 - C QUARTZ-FELDSPAR PORPHYRY
 - D FELSITE
 - E PEGMATITE
 - 3 SEDIMENTS
 - A GREYWACKE
 - B ARGILLITE
 - C CONGLOMERATE
 - D IRON FORMATION
 - F CHERT
 - 2 INTERMEDIATE TO FELSIC VOLCANICS
 - A FELSIC MASSIVE FLOWS
 - B FELSIC TUFF
 - C FELSIC LAPILLI TUFF
 - D INTERMEDIATE MASSIVE FLOWS
 - E INTERMEDIATE TUFF
 - F INTERMEDIATE LAPILLI TUFF
 - I FELSIT TO INTERMEDIATE VOLCANOCLASTICS
 - 1 MAFIC TO ULTRAMAFIC VOLCANICS
 - A MASSIVE FLOWS
 - B PILLOW FLOWS
 - C AGGLOMERATE
 - D VARIOLITIC FLOWS
 - E AMYGDUALOIDAL, VESICULAR FLOWS
 - F FLOW-TOP BRECCIAS
 - G AMPHIBOLITIC FLOWS
 - H MAFIC TUFF
 - I VOLCANOCLASTICS
 - U ULTRAMAFIC FLOWS
 - Z GABBROIC END MEMBER
- ABBREVIATIONS
 SH SHEAR ZONE
 MZ MINERALIZED ZONE
 FZ FAULT ZONE

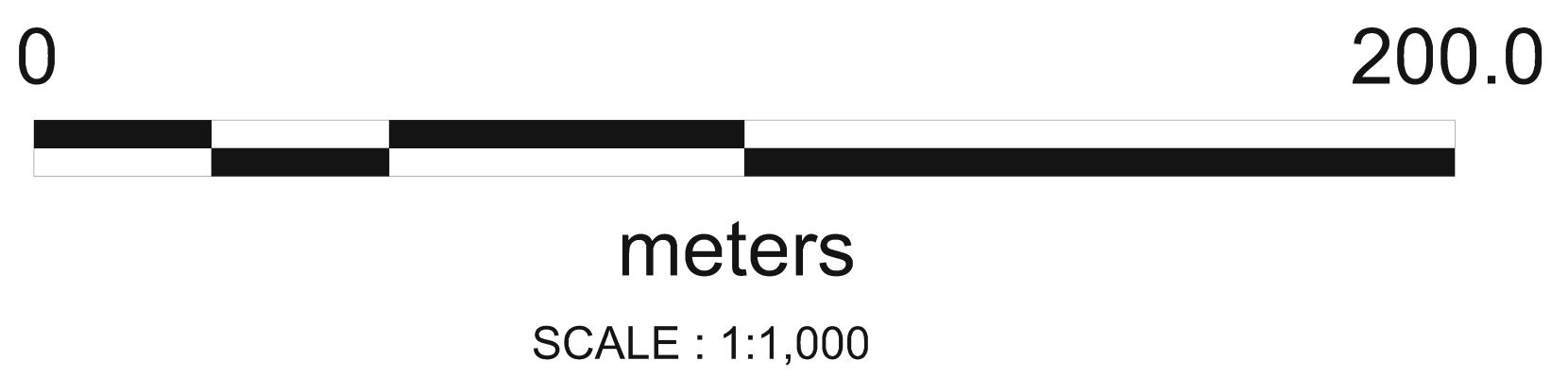
SUGAR ZONE MINING CLAIM
 SECTION 14NW 1135498

HOLE_ID	EASTING	NORTHING	ELEVATION	DIP	AZ	DEPTH
SZ-11-01	645,924.95	5,407,509.64	414.851	-70	50	114.91
SZ-11-02	645,979.03	5,407,450.69	427.403	-50	50	105.77
SZ-11-03	645,894.89	5,407,427.09	423.764	-70	50	221.59
SZ-11-04	645,762.94	5,407,444.69	406.423	-50	50	291.08
SZ-11-05	646,055.57	5,407,374.18	456.268	-45	50	90.24
SZ-11-06	646,032.3	5,407,033.49	434.232	-58	50	370.94
SZ-11-07	646,166.47	5,407,209.48	458.312	-50	50	252.13
SZ-11-08	646,216.59	5,407,048.92	447.651	-50	50	160.37
SZ-11-09	645,748.2	5,407,040.88	424.07	-70	50	663.85
SZ-11-10	646,256.83	5,407,153.05	457.27	-45	50	62.8
SZ-11-11	646,047.09	5,407,165.7	442.576	-55	50	233.23
SZ-11-12	646,046.93	5,407,165.4	442.705	-70	50	273.78
SZ-11-13	645,937.77	5,407,208.49	431.709	-55	50	270.43
SZ-11-14	645,888.18	5,406,767.27	430.843	-70	50	747
SZ-11-15	645,937.57	5,407,208.35	432.083	-70	50	334.37
SZ-11-16	645,893.45	5,407,307.95	419.699	-60	50	224.49
SZ-11-17	646,161.06	5,406,943.72	440.1	-55	50	297.79
SZ-11-18	645,789.34	5,407,218.61	409.988	-70	50	444.09
SZ-11-19	645,877.85	5,406,886.89	436.699	-70	50	624.09
SZ-11-20	645,712.42	5,407,212.08	408.667	-70	50	612.57
SZ-11-21	645,820.81	5,407,254.21	410.873	-55	50	348.69
SZ-11-22	646,478.25	5,406,824.36	463.597	-50	50	245.36
SZ-11-23	646,518.69	5,406,782.34	461.613	-55	50	208.79
SZ-11-24	646,451.89	5,406,725.28	451.076	-55	50	195.42
SZ-11-25	646,442.35	5,406,856.8	467.384	-50	50	117.65
SZ-11-26	646,477.14	5,407,327.12	456.005	-45	60	218.54
SZ-11-27	646,599.16	5,407,150.41	450.172	-45	60	155.75
JB-11-01	645,990	5,407,502	423	-45	45	66.16
JB-11-02	645,990	5,407,502	423	-55	45	69.21



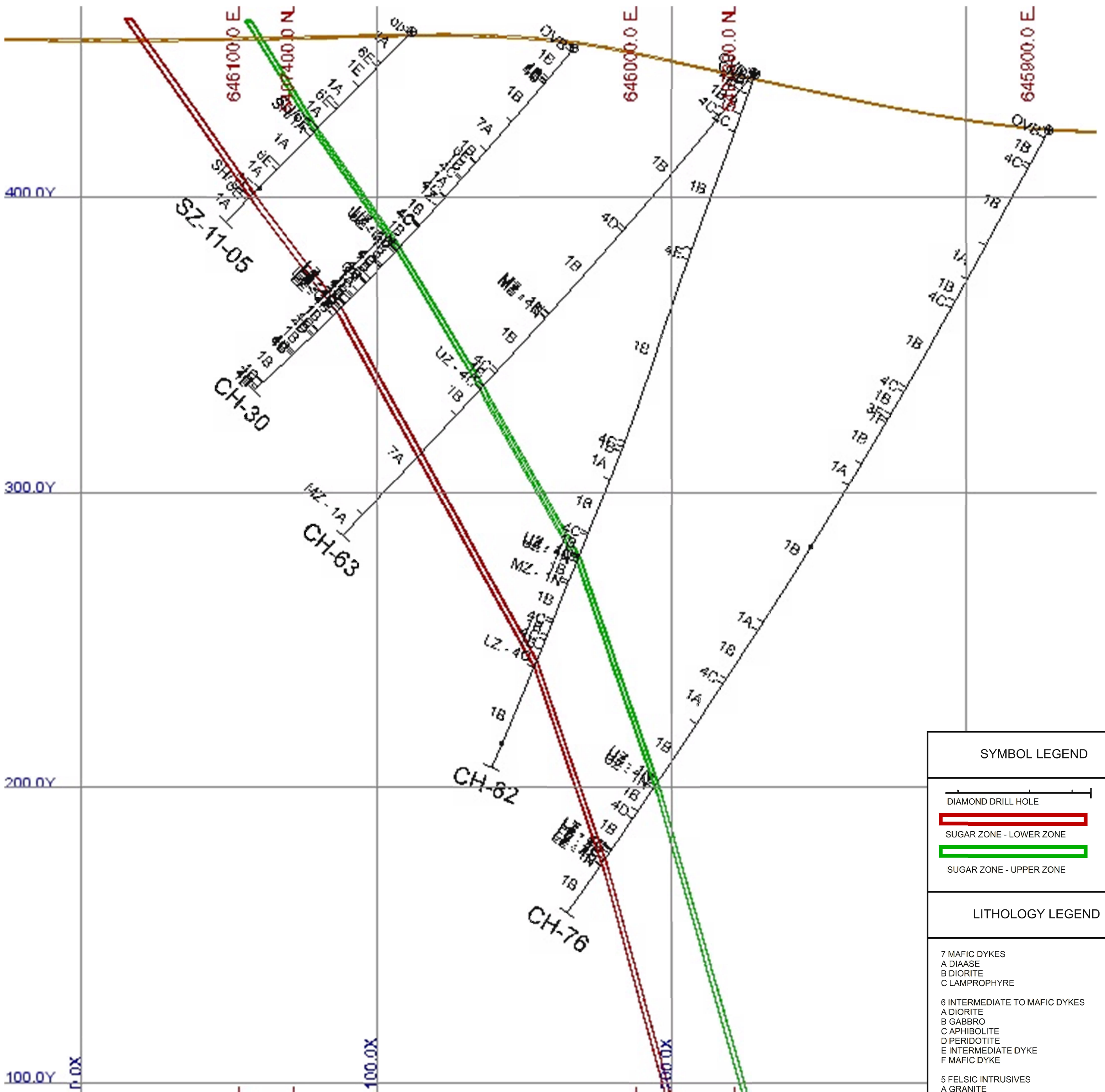


SYMBOL LEGEND	
	DIAMOND DRILL HOLE
	SUGAR ZONE - LOWER ZONE
	SUGAR ZONE - UPPER ZONE
LITHOLOGY LEGEND	
7	MAFIC DYKES
A	DIABASE
B	DIORITE
C	LAMPORPHYRE
6	INTERMEDIATE TO MAFIC DYKES
A	DIORITE
B	GABBRO
C	AMPHIBOLITE
D	PERIDOTITE
E	INTERMEDIATE DYKE
F	MAFIC DYKE
5	FELSIC INTRUSIVES
A	GRANITE
B	GRANODIORITE
C	QUARTZ MONZONITE
D	DYANITE
4	FELSIC PORPHYRITIC INTRUSIVES
A	QUARTZ PORPHYRY
B	FELDSPAR PORPHYRY
C	QUARTZ-FELDSPAR PORPHYRY
D	FELSITE
E	PEGMATITE
3	SEDIMENTS
A	GREYWACKE
B	ARGILLITE
C	CONGLOMERATE
D	IRON FORMATION
F	CHERT
2	INTERMEDIATE TO FELSIC VOLCANICS
A	FELSIC MASSIVE FLOWS
B	FELSIC TUFF
C	FELSIC LAPILLI TUFF
D	INTERMEDIATE MASSIVE FLOWS
E	INTERMEDIATE TUFF
F	INTERMEDIATE LAPILLI TUFF
I	FELSIC TO INTERMEDIATE VOLCANOCLASTICS
1	MAFIC TO ULTRAMAFIC VOLCANICS
A	MASSIVE FLOWS
B	FLOW FLOWS
C	AGGLOMERATE
D	ARGILLITE FLOWS
E	AMYGDALOIDAL VESICULAR FLOWS
F	FLOW-TOP BRECCIAS
G	AMPHIBOLITE FLOWS
H	MAFIC TUFF
I	VOLCANOCLASTICS
U	ULTRAMAFIC FLOWS
Z	GABBROIC END MEMBER
ABBREVIATIONS	
SH	SHEAR ZONE
MZ	MINERALIZED ZONE
EZ	FAULT ZONE



HOLE_ID	EASTING	NORTHING	ELEVATION	DIP	AZ	DEPTH
SZ-11-01	645.924.95	5.407.509.64	414.851	-70	50	114.91
SZ-11-02	645.979.03	5.407.450.69	427.403	-50	50	105.77
SZ-11-03	645.894.89	5.407.427.09	423.741	-70	50	221.59
SZ-11-04	645.762.94	5.407.444.69	408.423	-50	50	291.09
SZ-11-05	646.055.97	5.407.374.18	456.208	-45	50	90.24
SZ-11-06	646.032.3	5.407.033.49	434.232	-58	50	370.94
SZ-11-07	646.165.47	5.407.208.48	435.312	-50	50	232.13
SZ-11-08	646.216.59	5.407.048.92	447.651	-50	50	160.37
SZ-11-09	645.748.2	5.407.040.88	424.07	-70	50	683.85
SZ-11-10	646.256.83	5.407.153.05	457.27	-45	50	82.8
SZ-11-11	646.947.99	5.407.165.7	442.978	-55	50	232.23
SZ-11-12	646.046.93	5.407.165.4	442.705	-70	50	273.78
SZ-11-13	645.937.77	5.407.208.49	431.709	-55	50	270.43
SZ-11-14	645.885.18	5.406.707.27	435.843	-70	50	747
SZ-11-15	645.937.97	5.407.208.35	432.083	-70	50	334.37
SZ-11-16	645.893.45	5.407.307.95	419.699	-60	50	224.49
SZ-11-17	646.181.06	5.406.943.72	440.1	-55	50	297.79
SZ-11-18	645.789.34	5.407.216.61	409.988	-70	50	444.09
SZ-11-19	645.877.85	5.406.886.89	436.699	-70	50	624.09
SZ-11-20	645.712.42	5.407.212.06	408.867	-70	50	612.57
SZ-11-21	645.826.81	5.407.284.27	410.873	-55	50	348.89
SZ-11-22	646.478.25	5.406.624.50	463.597	-50	50	245.36
SZ-11-23	646.518.69	5.406.782.34	461.613	-55	50	208.79
SZ-11-24	646.451.89	5.406.723.29	451.076	-55	50	185.42
SZ-11-25	646.442.35	5.406.656.5	467.384	-50	50	117.65
SZ-11-26	646.477.14	5.407.327.12	456.005	-45	60	218.54
SZ-11-27	646.599.16	5.407.150.41	450.172	-45	60	155.75
SH-11-01	645.990	5.407.992	423	-45	45	86.16
SH-11-02	645.990	5.407.992	423	-55	45	89.21

SUGAR ZONE MINING CLAIM
SECTION 15NW 1135498



SYMBOL LEGEND

- DIAMOND DRILL HOLE
- SUGAR ZONE - LOWER ZONE
- SUGAR ZONE - UPPER ZONE

LITHOLOGY LEGEND

7 MAFIC DYKES
 A DIAASE
 B DIORITE
 C LAMPORPHYRE

6 INTERMEDIATE TO MAFIC DYKES
 A DIORITE
 B GABBRO
 C AMPHIBOLITE
 D PERIDOTITE
 E INTERMEDIATE DYKE
 F MAFIC DYKE

5 FELSIC INTRUSIVES
 A GRANITE
 B GRANODIORITE
 C QUARTZ MONZONITE
 D SYANITE

4 FELSIC PORPHYRITIC INTRUSIVES
 A QUARTZ PORPHYRY
 B FELDSPAR PORPHYRY
 C QUARTZ-FELDSPAR PORPHYRY
 D FELSITE
 E PEGMATITE

3 SEDIMENTS
 A GREYWACKE
 B ARGILLITE
 C CONGLOMERATE
 D IRON FORMATION
 F CHERT

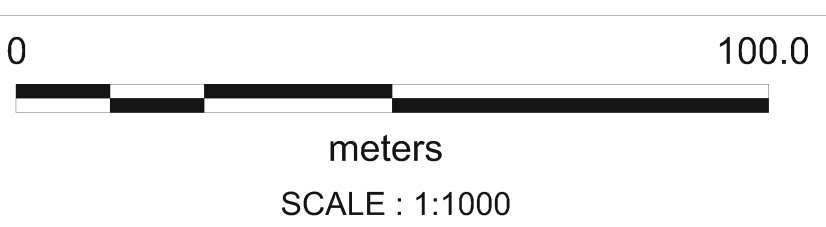
2 INTERMEDIATE TO FELSIC VOLCANICS
 A FELSIC MASSIVE FLOWS
 B FELSIC TUFF
 C FELSIC LAPILLI TUFF
 D INTERMEDIATE MASSIVE FLOWS
 E INTERMEDIATE TUFF
 F INTERMEDIATE LAPILLI TUFF
 I FELSIT TO INTERMEDIATE VOLCANOCLASTICS

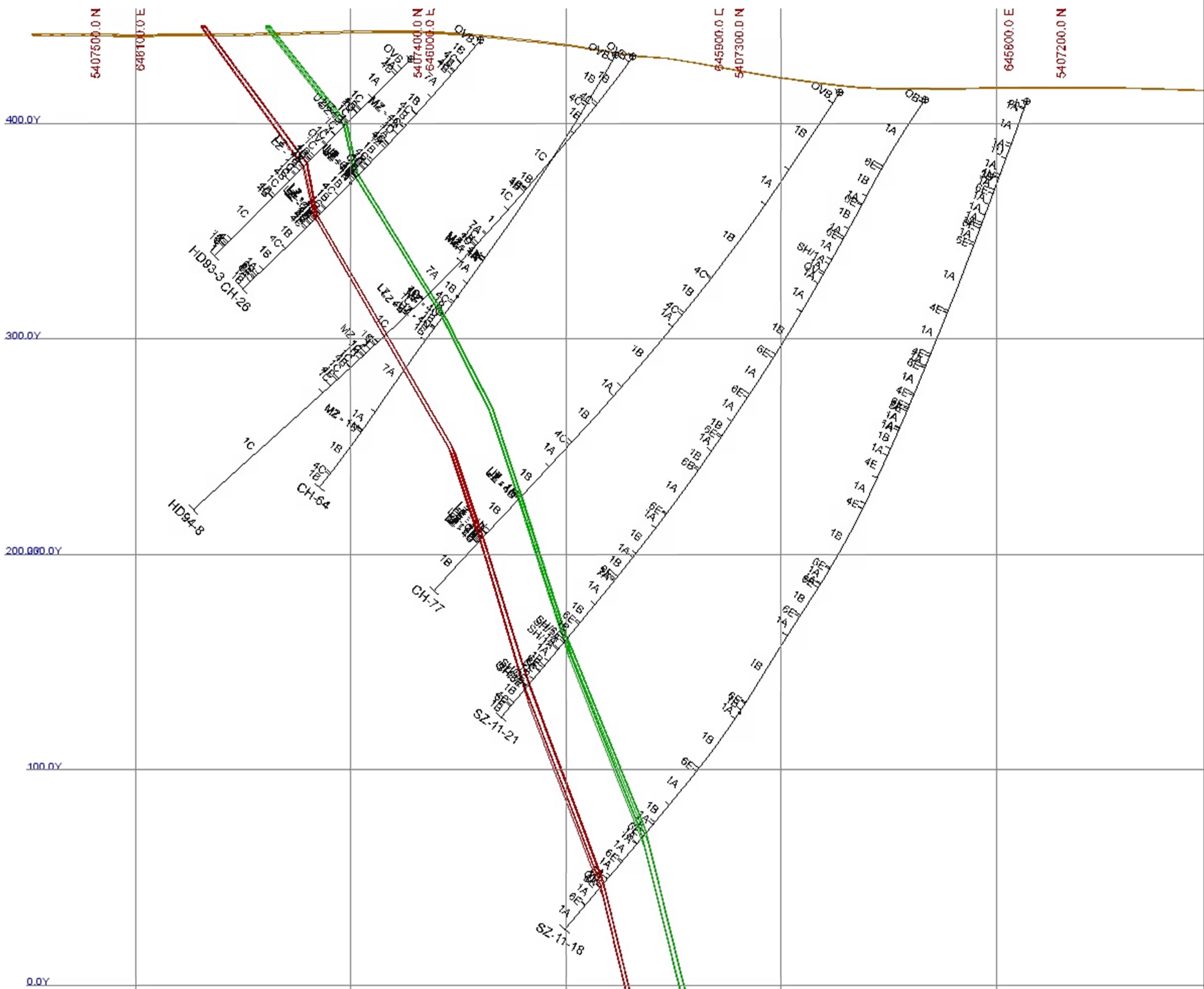
1 MAFIC TO ULTRAMAFIC VOLCANICS
 A MASSIVE FLOWS
 B PILLOW FLOWS
 C AGGLOMERATE
 D VARIOLITIC FLOWS
 E AMYGDUALOIDAL, VESICULAR FLOWS
 F FLOW-TOP BRECCIAS
 G AMPHIBOLITIC FLOWS
 H MAFIC TUFF
 I VOLCANOCLASTICS
 U ULTRAMAFIC FLOWS
 Z GABBROIC END MEMBER

ABBREVIATIONS
 SH SHEAR ZONE
 MZ MINERALIZED ZONE
 FZ FAULT ZONE

SUGAR ZONE MINING CLAIM SECTION 16NW 1135498

HOLE_ID	EASTING	NORTHING	ELEVATION	DIP	AZ	DEPTH
SZ-11-01	645,924.95	5,407,509.64	414.851	-70	50	114.91
SZ-11-02	645,979.03	5,407,450.69	427.403	-50	50	105.77
SZ-11-03	645,894.89	5,407,427.09	423.764	-70	50	221.59
SZ-11-04	645,762.94	5,407,444.69	406.423	-50	50	291.08
SZ-11-05	646,055.57	5,407,374.18	456.268	-45	50	90.24
SZ-11-06	646,032.3	5,407,033.49	434.232	-58	50	370.94
SZ-11-07	646,166.47	5,407,209.48	458.312	-50	50	252.13
SZ-11-08	646,216.59	5,407,048.92	447.651	-50	50	160.37
SZ-11-09	645,748.2	5,407,040.88	424.07	-70	50	663.85
SZ-11-10	646,256.83	5,407,153.05	457.27	-45	50	62.8
SZ-11-11	646,047.09	5,407,165.7	442.576	-55	50	233.23
SZ-11-12	646,046.93	5,407,165.4	442.705	-70	50	273.78
SZ-11-13	645,937.77	5,407,208.49	431.709	-55	50	270.43
SZ-11-14	645,888.18	5,406,767.27	430.843	-70	50	747
SZ-11-15	645,937.57	5,407,208.35	432.083	-70	50	334.37
SZ-11-16	645,893.45	5,407,307.95	419.699	-60	50	224.49
SZ-11-17	646,161.06	5,406,943.72	440.1	-55	50	297.79
SZ-11-18	645,789.34	5,407,218.61	409.988	-70	50	444.09
SZ-11-19	645,877.85	5,406,886.89	436.699	-70	50	624.09
SZ-11-20	645,712.42	5,407,212.08	408.667	-70	50	612.57
SZ-11-21	645,820.81	5,407,254.21	410.873	-55	50	348.69
SZ-11-22	646,478.25	5,406,824.36	463.597	-50	50	245.36
SZ-11-23	646,518.69	5,406,782.34	461.613	-55	50	208.79
SZ-11-24	646,451.89	5,406,725.28	451.076	-55	50	195.42
SZ-11-25	646,442.35	5,406,856.8	467.384	-50	50	117.65
SZ-11-26	646,477.14	5,407,327.12	456.005	-45	60	218.54
SZ-11-27	646,599.16	5,407,150.41	450.172	-45	60	155.75
JB-11-01	645,990	5,407,502	423	-45	45	66.16
JB-11-02	645,990	5,407,502	423	-55	45	69.21





SYMBOL LEGEND

- DIAMOND DRILL HOLE
- SUGAR ZONE - LOWER ZONE
- SUGAR ZONE - UPPER ZONE

LITHOLOGY LEGEND

7 MAFIC DYKES
 A DIAASE
 B DIORITE
 C LAMPORPHYRE

6 INTERMEDIATE TO MAFIC DYKES
 A DIORITE
 B GABBRO
 C AMPHIBOLITE
 D PERIDOTITE
 E INTERMEDIATE DYKE
 F MAFIC DYKE

5 FELSIC INTRUSIVES
 A GRANITE
 B GRANODIORITE
 C QUARTZ MONZONITE
 D SYANITE

4 FELSIC PORPHYRITIC INTRUSIVES
 A QUARTZ PORPHYRY
 B FELDSPAR PORPHYRY
 C QUARTZ-FELDSPAR PORPHYRY
 D FELSITE
 E PEGMATITE

3 SEDIMENTS
 A GREYWACKE
 B ARGILLITE
 C CONGLOMERATE
 D IRON FORMATION
 F CHERT

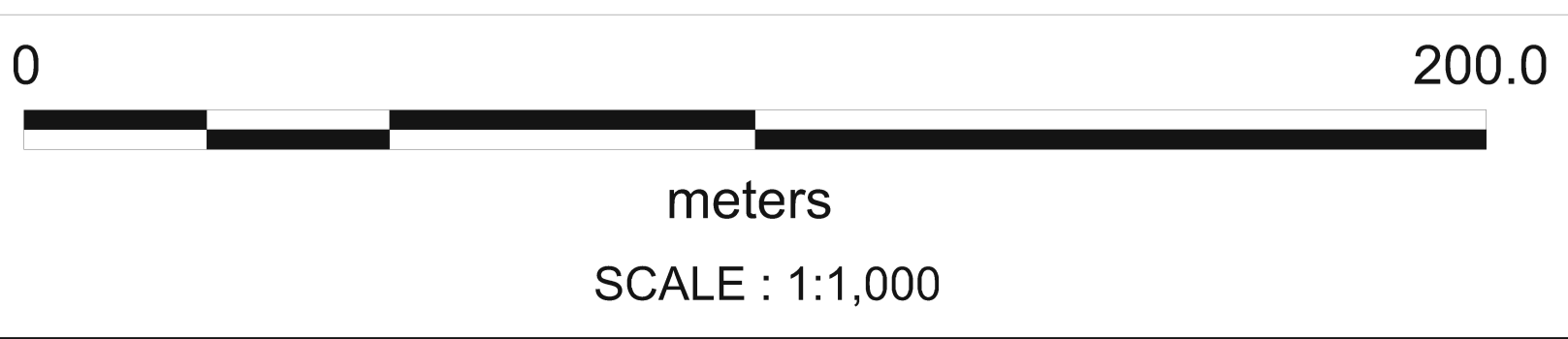
2 INTERMEDIATE TO FELSIC VOLCANICS
 A FELSIC MASSIVE FLOWS
 B FELSIC TUFF
 C FELSIC LAPILLI TUFF
 D INTERMEDIATE MASSIVE FLOWS
 E INTERMEDIATE TUFF
 F INTERMEDIATE LAPILLI TUFF
 I FELSIT TO INTERMEDIATE VOLCANOCLASTICS

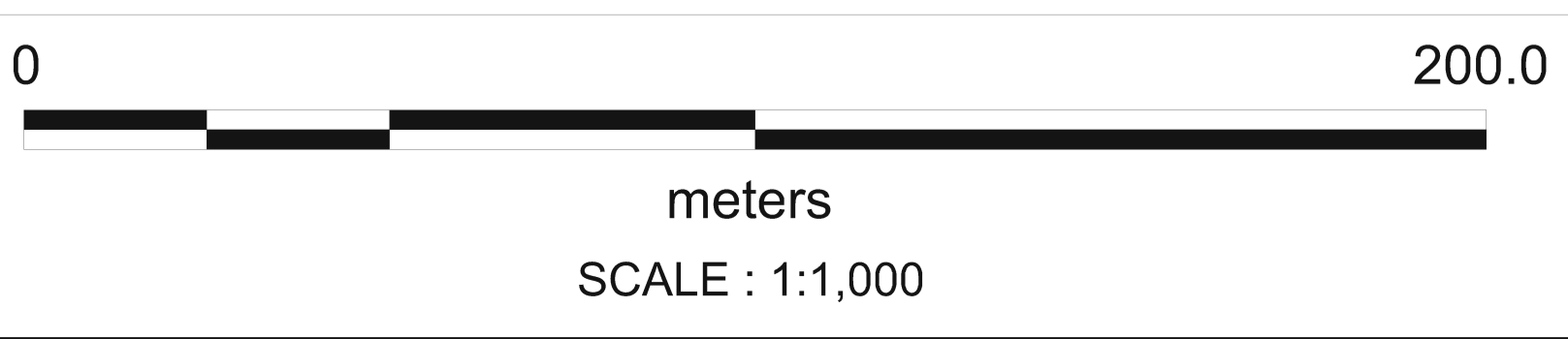
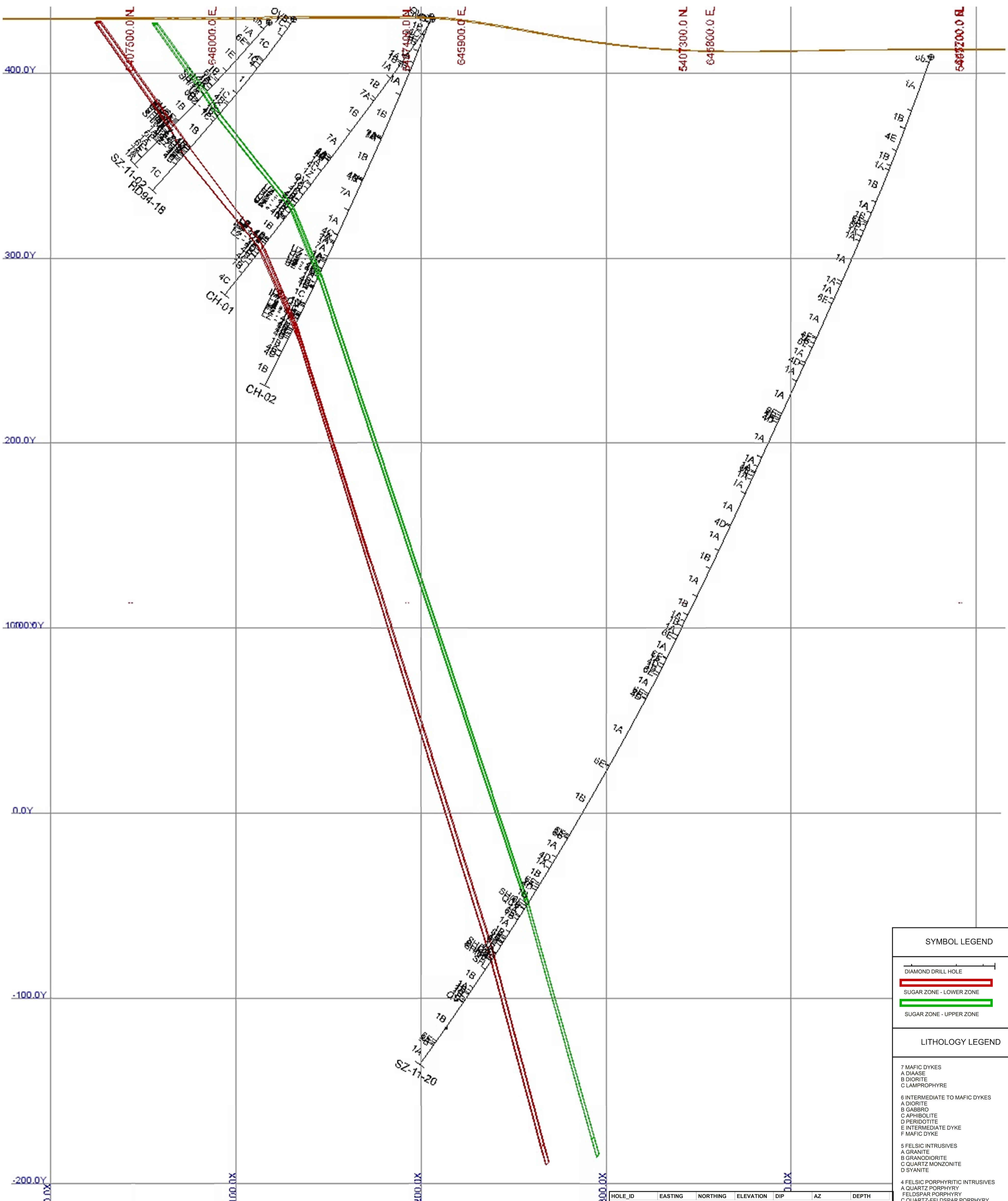
1 MAFIC TO ULTRAMAFIC VOLCANICS
 A MASSIVE FLOWS
 B PILLOW FLOWS
 C AGGLOMERATE
 D VARICLITIC FLOWS
 E AMYGDUALOIDAL VESICULAR FLOWS
 F FLOW-TOP BRECCIAS
 G AMPHIBOLITIC FLOWS
 H MAFIC TUFF
 I VOLCANOCLASTICS
 U ULTRAMAFIC FLOWS
 Z GABBROIC END MEMBER

ABBREVIATIONS
 SH SHEAR ZONE
 MZ MINERALIZED ZONE
 FZ FAULT ZONE

SUGAR ZONE MINING CLAIM SECTION 17NW 1135498

HOLE_ID	EASTING	NORTHING	ELEVATION	DIP	AZ	DEPTH
SZ-11-01	645.924.95	5.407.509.64	414.851	-70	50	114.91
SZ-11-02	645.979.03	5.407.450.69	427.403	-50	50	105.77
SZ-11-03	645.894.89	5.407.427.09	423.764	-70	50	221.59
SZ-11-04	645.762.94	5.407.444.69	406.423	-50	50	291.08
SZ-11-05	646.055.57	5.407.374.18	456.268	-45	50	90.24
SZ-11-06	646.032.3	5.407.033.49	434.232	-58	50	370.94
SZ-11-07	646.166.47	5.407.209.48	458.312	-50	50	252.13
SZ-11-08	646.216.59	5.407.048.92	447.651	-50	50	160.37
SZ-11-09	645.748.2	5.407.040.88	424.07	-70	50	663.85
SZ-11-10	646.266.83	5.407.153.05	457.27	-45	50	62.8
SZ-11-11	646.047.09	5.407.165.7	442.576	-55	50	233.23
SZ-11-12	646.046.93	5.407.165.4	442.705	-70	50	273.78
SZ-11-13	645.937.77	5.407.208.49	431.709	-55	50	270.43
SZ-11-14	645.888.18	5.406.767.27	430.843	-70	50	747
SZ-11-15	645.937.57	5.407.208.35	432.083	-70	50	334.37
SZ-11-16	645.893.45	5.407.307.95	419.699	-60	50	224.49
SZ-11-17	646.161.06	5.406.943.72	440.1	-55	50	297.79
SZ-11-18	645.789.34	5.407.218.61	409.988	-70	50	444.09
SZ-11-19	645.877.85	5.406.886.89	436.699	-70	50	624.09
SZ-11-20	645.712.42	5.407.212.08	408.667	-70	50	612.57
SZ-11-21	645.820.81	5.407.254.21	410.873	-55	50	348.69
SZ-11-22	646.478.25	5.406.824.36	463.597	-50	50	245.36
SZ-11-23	646.518.69	5.406.782.34	461.613	-55	50	208.79
SZ-11-24	646.451.89	5.406.725.28	451.076	-55	50	195.42
SZ-11-25	646.442.35	5.406.856.8	467.384	-50	50	117.65
SZ-11-26	646.477.14	5.407.327.12	456.005	-45	60	218.54
SZ-11-27	646.599.16	5.407.150.41	450.172	-45	60	155.75
JB-11-01	645.990	5.407.502	423	-45	45	66.16
JB-11-02	645.990	5.407.502	423	-55	45	69.21





SYMBOL LEGEND

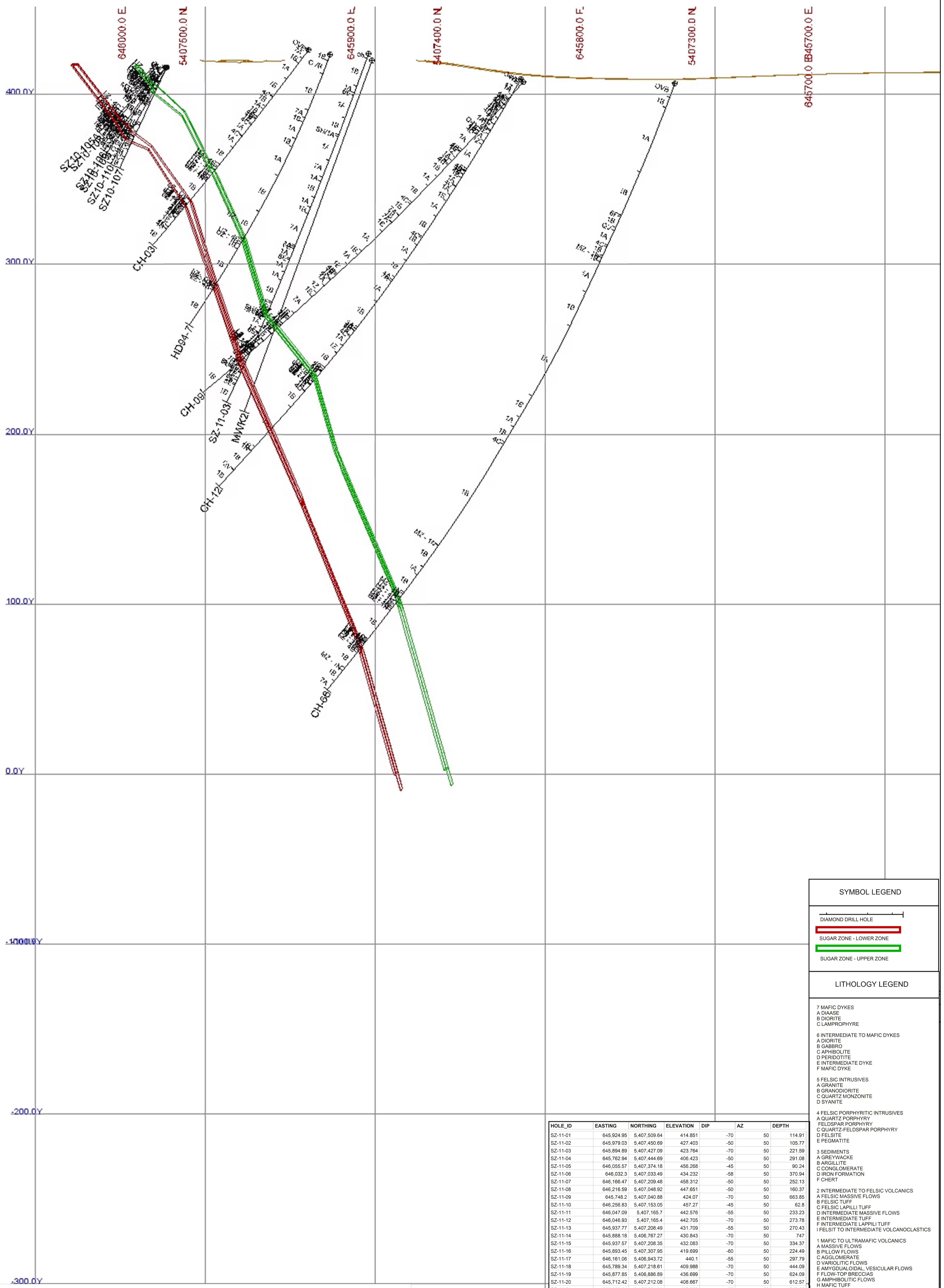
- DIAMOND DRILL HOLE
- SUGAR ZONE - LOWER ZONE
- SUGAR ZONE - UPPER ZONE

LITHOLOGY LEGEND

- 7 MAFIC DYKES
 - A DIAASE
 - B DIORITE
 - C LAMPORPHYRE
- 6 INTERMEDIATE TO MAFIC DYKES
 - A DIORITE
 - B GABBRO
 - C AMPHIBOLITE
 - D PERIDOTITE
 - E INTERMEDIATE DYKE
 - F MAFIC DYKE
- 5 FELSIC INTRUSIVES
 - A GRANITE
 - B GRANODIORITE
 - C QUARTZ MONZONITE
 - D SYANITE
- 4 FELSIC PORPHYRITIC INTRUSIVES
 - A QUARTZ PORPHYRY
 - B FELDSPAR PORPHYRY
 - C QUARTZ-FELDSPAR PORPHYRY
 - D FELSITE
 - E PEGMATITE
- 3 SEDIMENTS
 - A GREYWACKE
 - B AREGILLITE
 - C CONGLOMERATE
 - D IRON FORMATION
 - F CHERT
- 2 INTERMEDIATE TO FELSIC VOLCANICS
 - A FELSIC MASSIVE FLOWS
 - B FELSIC TUFF
 - C FELSIC LAPILLI TUFF
 - D INTERMEDIATE MASSIVE FLOWS
 - E INTERMEDIATE TUFF
 - F INTERMEDIATE LAPILLI TUFF
 - I FELSIT TO INTERMEDIATE VOLCANOCLASTICS
- 1 MAFIC TO ULTRAMAFIC VOLCANICS
 - A MASSIVE FLOWS
 - B PILLOW FLOWS
 - C AGGLOMERATE
 - D VARICLITIC FLOWS
 - E AMYGDALOIDAL, VESICULAR FLOWS
 - F FLOW-TOP BRECCIAS
 - G AMPHIBOLITIC FLOWS
 - H MAFIC TUFF
 - I VOLCANOCLASTICS
 - U ULTRAMAFIC FLOWS
 - Z GABBROIC END MEMBER
- ABBREVIATIONS
 - SH SHEAR ZONE
 - MZ MINERALIZED ZONE
 - FZ FAULT ZONE

SUGAR ZONE MINING CLAIM SECTION 18NW 1069347

HOLE_ID	EASTING	NORTHING	ELEVATION	DIP	AZ	DEPTH
SZ-11-01	645.924.95	5.407.509.64	414.851	-70	50	114.91
SZ-11-02	645.979.03	5.407.450.69	427.403	-50	50	105.77
SZ-11-03	645.894.89	5.407.427.09	423.764	-70	50	221.59
SZ-11-04	645.782.94	5.407.444.69	406.423	-50	50	291.08
SZ-11-05	646.055.57	5.407.374.18	456.268	-45	50	90.24
SZ-11-06	646.032.3	5.407.033.49	434.232	-58	50	370.94
SZ-11-07	646.166.47	5.407.209.48	458.312	-50	50	252.13
SZ-11-08	646.216.59	5.407.048.92	447.651	-50	50	160.37
SZ-11-09	645.748.2	5.407.040.88	424.07	-70	50	663.85
SZ-11-10	646.266.83	5.407.153.05	457.27	-45	50	62.8
SZ-11-11	646.047.09	5.407.165.7	442.576	-55	50	233.23
SZ-11-12	646.046.93	5.407.165.4	442.705	-70	50	273.78
SZ-11-13	645.937.77	5.407.208.49	431.709	-55	50	270.43
SZ-11-14	645.888.18	5.406.767.27	430.843	-70	50	747
SZ-11-15	645.937.57	5.407.208.35	432.083	-70	50	334.37
SZ-11-16	645.893.45	5.407.307.95	419.699	-60	50	224.49
SZ-11-17	646.161.06	5.406.943.72	440.1	-55	50	297.79
SZ-11-18	645.789.34	5.407.218.61	409.988	-70	50	444.09
SZ-11-19	645.877.85	5.406.886.89	436.699	-70	50	624.09
SZ-11-20	645.712.42	5.407.212.08	408.667	-70	50	612.57
SZ-11-21	645.820.81	5.407.254.21	410.873	-55	50	348.69
SZ-11-22	646.478.25	5.406.824.36	463.597	-50	50	245.36
SZ-11-23	646.518.69	5.406.782.34	461.613	-55	50	208.79
SZ-11-24	646.451.89	5.406.725.28	451.076	-55	50	195.42
SZ-11-25	646.442.35	5.406.856.8	467.384	-50	50	117.65
SZ-11-26	646.477.14	5.407.327.12	456.005	-45	60	218.54
SZ-11-27	646.599.16	5.407.150.41	450.172	-45	60	155.75
JB-11-01	645.990	5.407.502	423	-45	45	66.16
JB-11-02	645.990	5.407.502	423	-55	45	69.21



SYMBOL LEGEND

DIAMOND DRILL HOLE

SUGAR ZONE - LOWER ZONE

SUGAR ZONE - UPPER ZONE

LITHOLOGY LEGEND

7 MAFIC DYKES
 A DIAASE
 B DIORITE
 C LAMPORPHYRE

6 INTERMEDIATE TO MAFIC DYKES
 A DIORITE
 B GABBRO
 C AMPHIBOLITE
 D PERIDOTITE
 E INTERMEDIATE DYKE
 F MAFIC DYKE

5 FELSIC INTRUSIVES
 A GRANITE
 B GRANODIORITE
 C QUARTZ MONZONITE
 D SYANITE

4 FELSIC PORPHYRITIC INTRUSIVES
 A QUARTZ PORPHYRY
 B FELDSPAR PORPHYRY
 C QUARTZ-FELDSPAR PORPHYRY
 D FELSITE
 E PEGMATITE

3 SEDIMENTS
 A GREYWACKE
 B ARGILLITE
 C CONGLOMERATE
 D IRON FORMATION
 F CHERT

2 INTERMEDIATE TO FELSIC VOLCANICS
 A FELSIC MASSIVE FLOWS
 B FELSIC TUFF
 C FELSIC LAPILLI TUFF
 D INTERMEDIATE MASSIVE FLOWS
 E INTERMEDIATE TUFF
 F INTERMEDIATE LAPILLI TUFF
 I FELSIT TO INTERMEDIATE VOLCANOCLASTICS

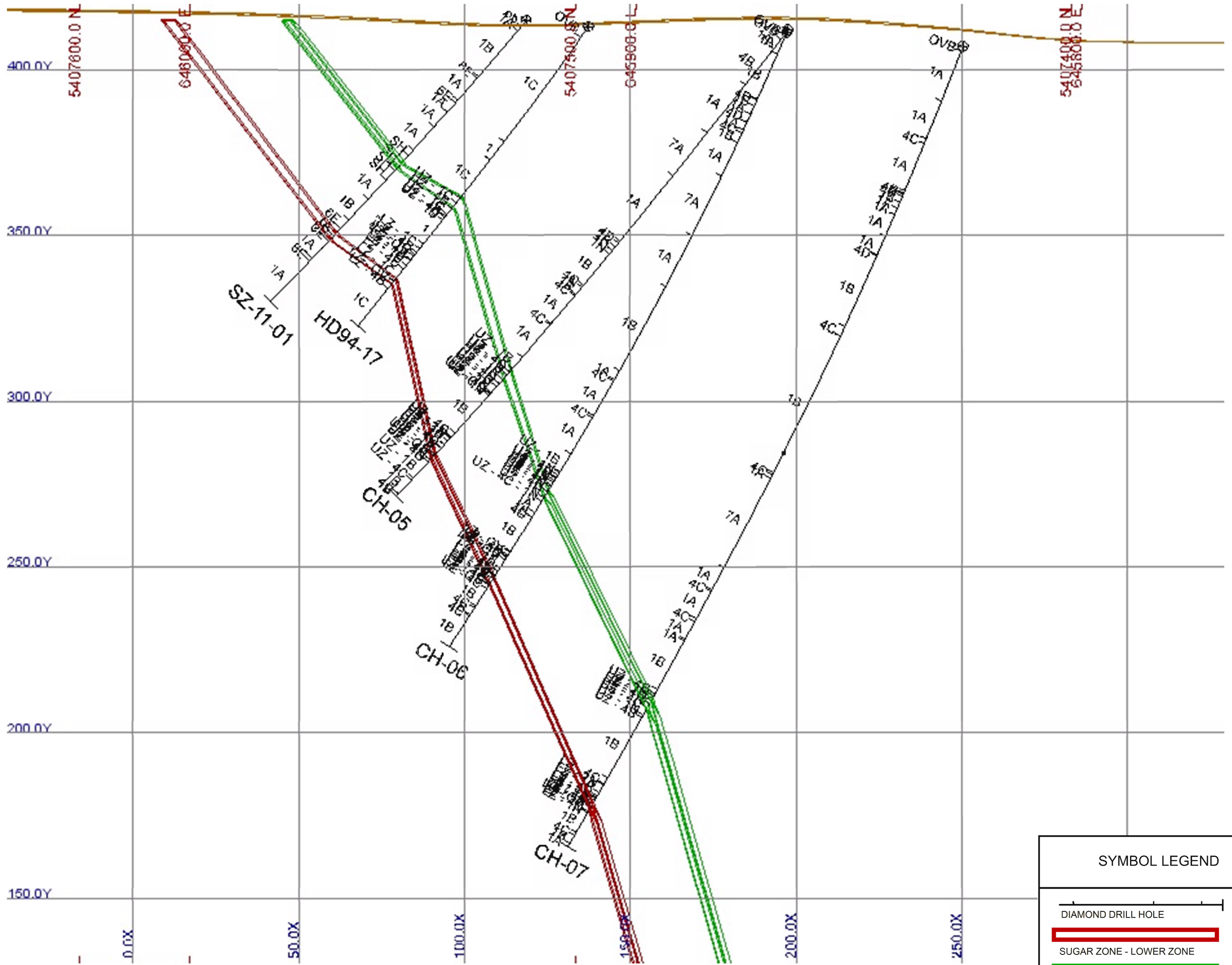
1 MAFIC TO ULTRAMAFIC VOLCANICS
 A MASSIVE FLOWS
 B PILLOW FLOWS
 C AGGLOMERATE
 D VARIOLITIC FLOWS
 E AMYGDALOIDAL VESICULAR FLOWS
 F FLOW-TOP BRECCIAS
 G AMPHIBOLITIC FLOWS
 H MAFIC TUFF
 I VOLCANOCLASTICS
 U ULTRAMAFIC FLOWS
 Z GABBROIC END MEMBER

ABBREVIATIONS
 SH SHEAR ZONE
 MZ MINERALIZED ZONE
 FZ FAULT ZONE

SUGAR ZONE SECTION 19NW MINING CLAIM 1069347

HOLE_ID	EASTING	NORTHING	ELEVATION	DIP	AZ	DEPTH
SZ-11-01	645.924.95	5.407.509.64	414.851	-70	50	114.91
SZ-11-02	645.979.03	5.407.450.69	427.403	-50	50	105.77
SZ-11-03	645.894.89	5.407.427.09	423.764	-70	50	221.59
SZ-11-04	645.762.94	5.407.444.69	406.423	-50	50	291.08
SZ-11-05	646.055.57	5.407.374.18	456.268	-45	50	90.24
SZ-11-06	646.032.3	5.407.033.49	434.232	-58	50	370.94
SZ-11-07	646.166.47	5.407.209.48	458.312	-50	50	252.13
SZ-11-08	646.216.59	5.407.048.92	447.651	-50	50	160.37
SZ-11-09	645.748.2	5.407.040.88	424.07	-70	50	663.85
SZ-11-10	646.266.83	5.407.153.05	457.27	-45	50	62.8
SZ-11-11	646.047.09	5.407.165.7	442.576	-55	50	233.23
SZ-11-12	646.046.93	5.407.165.4	442.705	-70	50	273.78
SZ-11-13	645.937.77	5.407.208.49	431.709	-55	50	270.43
SZ-11-14	645.888.18	5.406.767.27	430.843	-70	50	747
SZ-11-15	645.937.57	5.407.208.35	432.083	-70	50	334.37
SZ-11-16	645.893.45	5.407.307.95	419.699	-60	50	224.49
SZ-11-17	646.161.06	5.406.943.72	440.1	-55	50	297.79
SZ-11-18	646.451.89	5.407.218.61	409.988	-70	50	444.09
SZ-11-19	645.877.85	5.406.886.89	436.699	-70	50	624.09
SZ-11-20	645.712.42	5.407.212.08	408.667	-70	50	612.57
SZ-11-21	645.820.81	5.407.254.21	410.873	-55	50	348.69
SZ-11-22	646.478.25	5.406.824.36	463.597	-50	50	245.36
SZ-11-23	646.518.69	5.406.782.34	461.613	-55	50	208.79
SZ-11-24	646.451.89	5.406.725.28	451.076	-55	50	195.42
SZ-11-25	646.442.35	5.406.856.8	467.384	-50	50	117.65
SZ-11-26	646.477.14	5.407.327.12	456.005	-45	60	218.54
SZ-11-27	646.599.16	5.407.150.41	450.172	-45	60	155.75
JB-11-01	645.990	5.407.502	423	-45	45	66.16
JB-11-02	645.990	5.407.502	423	-55	45	69.21

0 200.0
 meters
 SCALE : 1:1,000



SYMBOL LEGEND

DIAMOND DRILL HOLE

SUGAR ZONE - LOWER ZONE

SUGAR ZONE - UPPER ZONE

LITHOLOGY LEGEND

7 MAFIC DYKES
 A DIAASE
 B DIORITE
 C LAMPORPHYRE

6 INTERMEDIATE TO MAFIC DYKES
 A DIORITE
 B GABBRO
 C AMPHIBOLITE
 D PERIDOTITE
 E INTERMEDIATE DYKE
 F MAFIC DYKE

5 FELSIC INTRUSIVES
 A GRANITE
 B GRANODIORITE
 C QUARTZ MONZONITE
 D SYANITE

4 FELSIC PORPHYRITIC INTRUSIVES
 A QUARTZ PORPHYRY
 B FELDSPAR PORPHYRY
 C QUARTZ-FELDSPAR PORPHYRY
 D FELSITE
 E PEGMATITE

3 SEDIMENTS
 A GREYWACKE
 B ARGILLITE
 C CONGLOMERATE
 D IRON FORMATION
 F CHERT

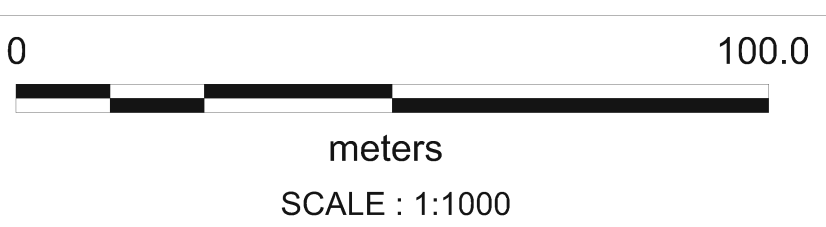
2 INTERMEDIATE TO FELSIC VOLCANICS
 A FELSIC MASSIVE FLOWS
 B FELSIC TUFF
 C FELSIC LAPILLI TUFF
 D INTERMEDIATE MASSIVE FLOWS
 E INTERMEDIATE TUFF
 F INTERMEDIATE LAPILLI TUFF
 I FELSIT TO INTERMEDIATE VOLCANOCLASTICS

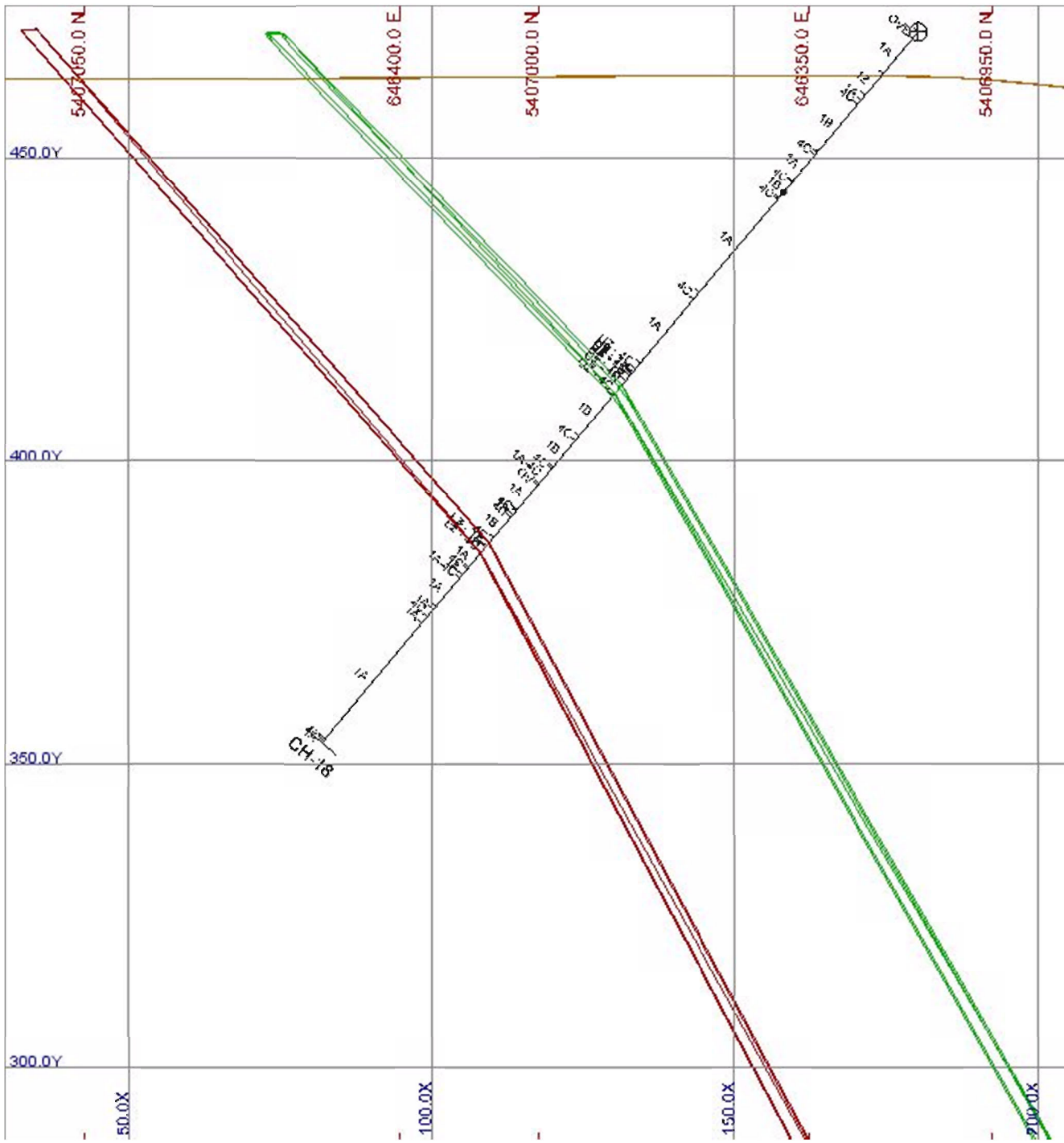
1 MAFIC TO ULTRAMAFIC VOLCANICS
 A MASSIVE FLOWS
 B PILLOW FLOWS
 C AGGLOMERATE
 D VARIOLITIC FLOWS
 E AMYGDUALOIDAL, VESICULAR FLOWS
 F FLOW-TOP BRECCIAS
 G AMPHIBOLITIC FLOWS
 H MAFIC TUFF
 I VOLCANOCLASTICS
 U ULTRAMAFIC FLOWS
 Z GABBROIC END MEMBER

ABBREVIATIONS
 SH SHEAR ZONE
 MZ MINERALIZED ZONE
 FZ FAULT ZONE

SUGAR ZONE MINING CLAIM
SECTION 20NW 1069342

HOLE_ID	EASTING	NORTHING	ELEVATION	DIP	AZ	DEPTH
SZ-11-01	645,924.95	5,407,509.64	414.851	-70	50	114.91
SZ-11-02	645,979.03	5,407,450.69	427.403	-50	50	105.77
SZ-11-03	645,894.89	5,407,427.09	423.764	-70	50	221.59
SZ-11-04	645,762.94	5,407,444.69	406.423	-50	50	291.08
SZ-11-05	646,055.57	5,407,374.18	456.268	-45	50	90.24
SZ-11-06	646,032.3	5,407,033.49	434.232	-58	50	370.94
SZ-11-07	646,166.47	5,407,209.48	458.312	-50	50	252.13
SZ-11-08	646,216.59	5,407,048.92	447.651	-50	50	160.37
SZ-11-09	645,748.2	5,407,040.88	424.07	-70	50	663.85
SZ-11-10	646,256.83	5,407,153.05	457.27	-45	50	62.8
SZ-11-11	646,047.09	5,407,165.7	442.576	-55	50	233.23
SZ-11-12	646,046.93	5,407,165.4	442.705	-70	50	273.78
SZ-11-13	645,937.77	5,407,208.49	431.709	-55	50	270.43
SZ-11-14	645,888.18	5,406,767.27	430.843	-70	50	747
SZ-11-15	645,937.57	5,407,208.35	432.083	-70	50	334.37
SZ-11-16	645,893.45	5,407,307.95	419.699	-60	50	224.49
SZ-11-17	646,161.06	5,406,943.72	440.1	-55	50	297.79
SZ-11-18	645,789.34	5,407,218.61	409.988	-70	50	444.09
SZ-11-19	645,877.85	5,406,886.89	436.699	-70	50	624.09
SZ-11-20	645,712.42	5,407,212.08	408.667	-70	50	612.57
SZ-11-21	645,820.81	5,407,254.21	410.873	-55	50	348.69
SZ-11-22	646,478.25	5,406,824.36	463.597	-50	50	245.36
SZ-11-23	646,518.69	5,406,782.34	461.613	-55	50	208.79
SZ-11-24	646,451.89	5,406,725.28	451.076	-55	50	195.42
SZ-11-25	646,442.35	5,406,856.8	467.384	-50	50	117.65
SZ-11-26	646,477.14	5,407,327.12	456.005	-45	60	218.54
SZ-11-27	646,599.16	5,407,150.41	450.172	-45	60	155.75
JB-11-01	645,990	5,407,502	423	-45	45	66.16
JB-11-02	645,990	5,407,502	423	-55	45	69.21





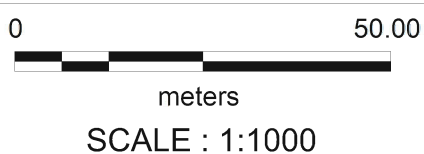
SYMBOL LEGEND

- DIAMOND DRILL HOLE
- SUGAR ZONE - LOWER ZONE
- SUGAR ZONE - UPPER ZONE

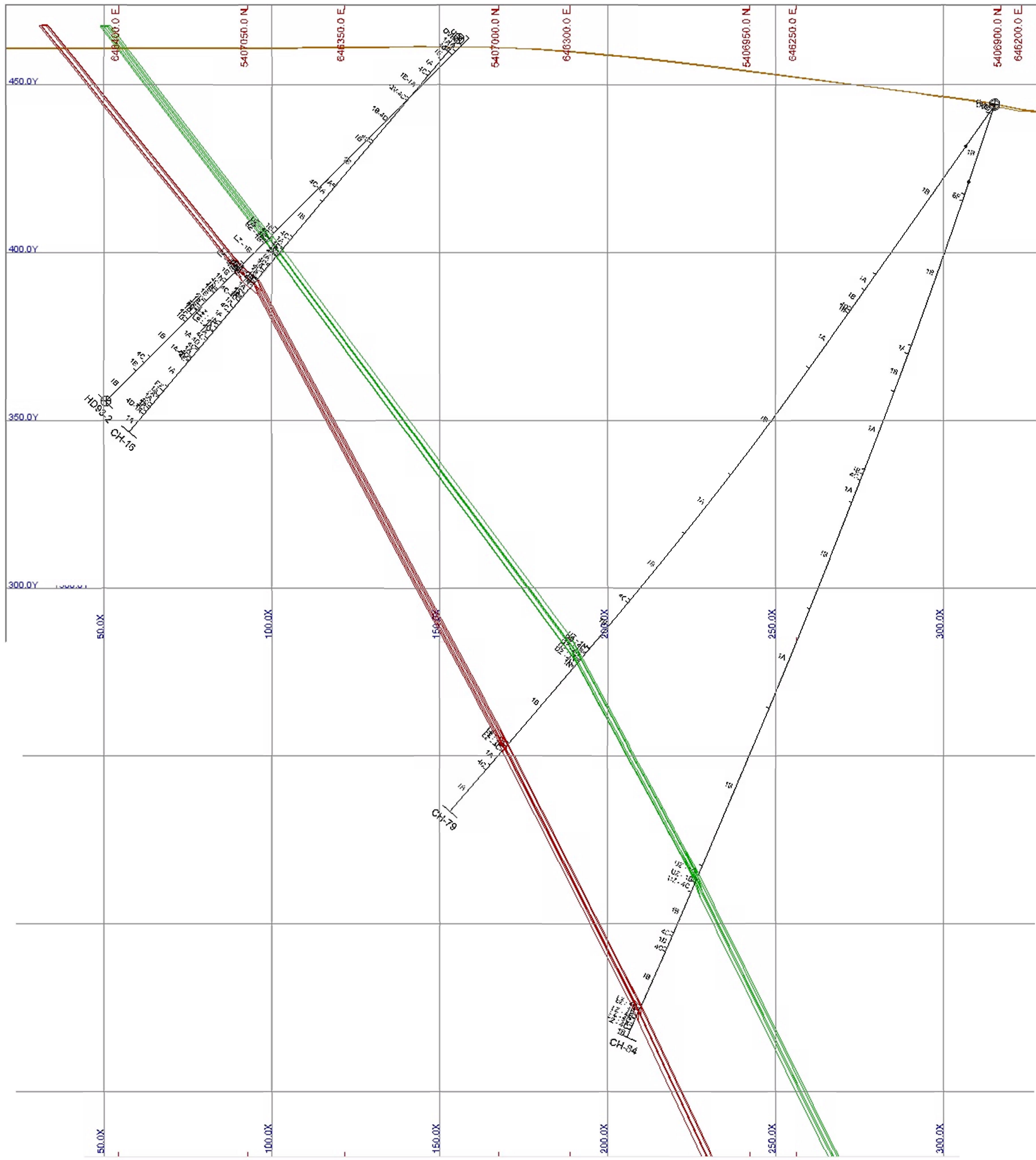
LITHOLOGY LEGEND

- 7 MAFIC DYKES
 - A DIAASE
 - B DIORITE
 - C LAMPROPHYRE
- 6 INTERMEDIATE TO MAFIC DYKES
 - A DIORITE
 - B GABBRO
 - C APHIBOLITE
 - D PERIDOTITE
 - E INTERMEDIATE DYKE
 - F MAFIC DYKE
- 5 FELSIC INTRUSIVES
 - A GRANITE
 - B GRANODIORITE
 - C QUARTZ MONZONITE
 - D SYANITE
- 4 FELSIC PORPHYRITIC INTRUSIVES
 - A QUARTZ PORPHYRY
 - FELDSPAR PORPHYRY
 - C QUARTZ-FELDSPAR PORPHYRY
 - D FELSITE
 - E PEGMATITE
- 3 SEDIMENTS
 - A GREYWACKE
 - B ARGILLITE
 - C CONGLOMERATE
 - D IRON FORMATION
 - F CHERT
- 2 INTERMEDIATE TO FELSIC VOLCANICS
 - A FELSIC MASSIVE FLOWS
 - B FELSIC TUFF
 - C FELSIC LAPILLI TUFF
 - D INTERMEDIATE MASSIVE FLOWS
 - E INTERMEDIATE TUFF
 - F INTERMEDIATE LAPILLI TUFF
 - I FELSIT TO INTERMEDIATE VOLCANOCLASTICS
- 1 MAFIC TO ULTRAMAFIC VOLCANICS
 - A MASSIVE FLOWS
 - B PILLOW FLOWS
 - C AGGLOMERATE
 - D VARIOLITIC FLOWS
 - E AMYGDUALOIDAL, VESICULAR FLOWS
 - F FLOW-TOP BRECCIAS
 - G AMPHIBOLITIC FLOWS
 - H MAFIC TUFF
 - I VOLCANOCLASTICS
 - U ULTRAMAFIC FLOWS
 - Z GABBROIC END MEMBER
- ABBREVIATIONS
 - SH SHEAR ZONE
 - MZ MINERALIZED ZONE
 - FZ FAULT ZONE

HOLE_ID	EASTING	NORTHING	ELEVATION	DIP	AZ	DEPTH
SZ-11-01	645,924.95	5,407,509.64	414.851	-70	50	114.91
SZ-11-02	645,979.03	5,407,450.69	427.403	-50	50	105.77
SZ-11-03	645,894.89	5,407,427.09	423.764	-70	50	221.59
SZ-11-04	645,762.94	5,407,444.69	406.423	-50	50	291.08
SZ-11-05	646,055.57	5,407,374.18	456.268	-45	50	90.24
SZ-11-06	646,032.3	5,407,033.49	434.232	-58	50	370.94
SZ-11-07	646,166.47	5,407,209.48	458.312	-50	50	252.13
SZ-11-08	646,216.59	5,407,048.92	447.651	-50	50	160.37
SZ-11-09	645,748.2	5,407,040.88	424.07	-70	50	663.85
SZ-11-10	646,256.83	5,407,153.05	457.27	-45	50	62.8
SZ-11-11	646,047.09	5,407,165.7	442.576	-55	50	233.23
SZ-11-12	646,046.93	5,407,165.4	442.705	-70	50	273.78
SZ-11-13	645,937.77	5,407,208.49	431.709	-55	50	270.43
SZ-11-14	645,888.18	5,406,767.27	430.843	-70	50	747
SZ-11-15	645,937.57	5,407,208.35	432.083	-70	50	334.37
SZ-11-16	645,893.45	5,407,307.95	419.699	-60	50	224.49
SZ-11-17	646,161.06	5,406,943.72	440.1	-55	50	297.79
SZ-11-18	645,789.34	5,407,218.61	409.988	-70	50	444.09
SZ-11-19	645,877.85	5,406,886.89	436.699	-70	50	624.09
SZ-11-20	645,712.42	5,407,212.08	408.667	-70	50	612.57
SZ-11-21	645,820.81	5,407,254.21	410.873	-55	50	348.69
SZ-11-22	646,478.25	5,406,824.36	463.597	-50	50	245.36
SZ-11-23	646,518.69	5,406,782.34	461.613	-55	50	208.79
SZ-11-24	646,451.89	5,406,725.28	451.076	-55	50	195.42
SZ-11-25	646,442.35	5,406,856.8	467.384	-50	50	117.65
SZ-11-26	646,477.14	5,407,327.12	456.005	-45	60	218.54
SZ-11-27	646,599.16	5,407,150.41	450.172	-45	60	155.75
JB-11-01	645,990	5,407,502	423	-45	45	66.16
JB-11-02	645,990	5,407,502	423	-55	45	69.21



SUGAR ZONE MINING CLAIM
SECTION 6NW 1069352



SYMBOL LEGEND

DIAMOND DRILL HOLE

SUGAR ZONE - LOWER ZONE

SUGAR ZONE - UPPER ZONE

LITHOLOGY LEGEND

7 MAFIC DYKES
A DIAASE
B DIORITE
C LAMPORPHYRE

6 INTERMEDIATE TO MAFIC DYKES
A DIORITE
B GABBRO
C AMPHIBOLITE
D PERIDOTITE
E INTERMEDIATE DYKE
F MAFIC DYKE

5 FELSIC INTRUSIVES
A GRANITE
B GRANODIORITE
C QUARTZ MONZONITE
D SYANITE

4 FELSIC PORPHYRITIC INTRUSIVES
A QUARTZ PORPHYRY
FELDSPAR PORPHYRY
C QUARTZ-FELDSPAR PORPHYRY
D FELSITE
E PEGMATITE

3 SEDIMENTS
A GREYWACKE
B ARGILLITE
C CONGLOMERATE
D IRON FORMATION
F CHERT

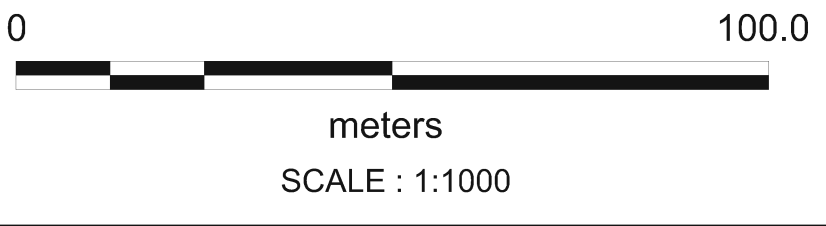
2 INTERMEDIATE TO FELSIC VOLCANICS
A FELSIC MASSIVE FLOWS
B FELSIC TUFF
C FELSIC LAPILLI TUFF
D INTERMEDIATE MASSIVE FLOWS
E INTERMEDIATE TUFF
F INTERMEDIATE LAPILLI TUFF
I FELSIT TO INTERMEDIATE VOLCANOCLASTICS

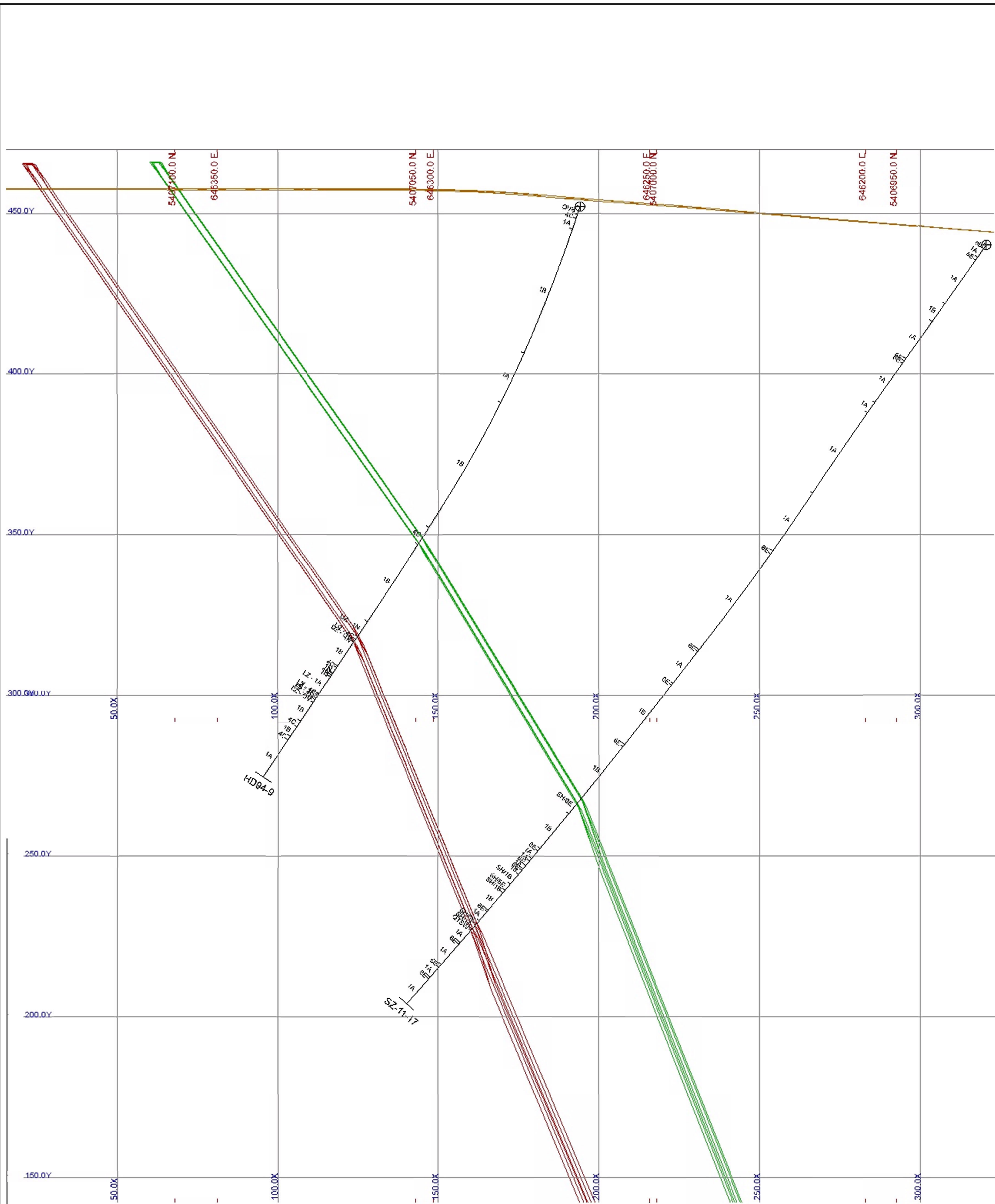
1 MAFIC TO ULTRAMAFIC VOLCANICS
A MASSIVE FLOWS
B PILLOW FLOWS
C AGGLOMERATE
D VARIOLITIC FLOWS
E AMYGDUALOIDAL, VESICULAR FLOWS
F FLOW-TOP BRECCIAS
G AMPHIBOLITIC FLOWS
H MAFIC TUFF
I VOLCANOCLASTICS
U ULTRAMAFIC FLOWS
Z GABBROIC END MEMBER

ABBREVIATIONS
SH SHEAR ZONE
MZ MINERALIZED ZONE
FZ FAULT ZONE

SUGAR ZONE MINING CLAIM
SECTION 7NW 1135499

HOLE_ID	EASTING	NORTHING	ELEVATION	DIP	AZ	DEPTH
SZ-11-01	645,924.95	5,407,509.64	414.851	-70	50	114.91
SZ-11-02	645,979.03	5,407,450.69	427.403	-50	50	105.77
SZ-11-03	645,894.89	5,407,427.09	423.764	-70	50	221.59
SZ-11-04	645,762.94	5,407,444.69	406.423	-50	50	291.08
SZ-11-05	646,055.57	5,407,374.18	456.268	-45	50	90.24
SZ-11-06	646,032.3	5,407,033.49	434.232	-58	50	370.94
SZ-11-07	646,166.47	5,407,209.48	458.312	-50	50	252.13
SZ-11-08	646,216.59	5,407,048.92	447.651	-50	50	160.37
SZ-11-09	645,748.2	5,407,040.88	424.07	-70	50	663.85
SZ-11-10	646,256.83	5,407,153.05	457.27	-45	50	62.8
SZ-11-11	646,047.09	5,407,165.7	442.576	-55	50	233.23
SZ-11-12	646,046.93	5,407,165.4	442.705	-70	50	273.78
SZ-11-13	645,937.77	5,407,208.49	431.709	-55	50	270.43
SZ-11-14	645,888.18	5,406,767.27	430.843	-70	50	747
SZ-11-15	645,937.57	5,407,208.35	432.083	-70	50	334.37
SZ-11-16	645,893.45	5,407,307.95	419.699	-60	50	224.49
SZ-11-17	646,161.06	5,406,943.72	440.1	-55	50	297.79
SZ-11-18	645,789.34	5,407,218.61	409.988	-70	50	444.09
SZ-11-19	645,877.85	5,406,886.89	436.699	-70	50	624.09
SZ-11-20	645,712.42	5,407,212.08	408.667	-70	50	612.57
SZ-11-21	645,820.81	5,407,254.21	410.873	-55	50	348.69
SZ-11-22	646,478.25	5,406,824.36	463.597	-50	50	245.36
SZ-11-23	646,518.69	5,406,782.34	461.613	-55	50	208.79
SZ-11-24	646,451.89	5,406,725.28	451.076	-55	50	195.42
SZ-11-25	646,442.35	5,406,856.8	467.384	-50	50	117.65
SZ-11-26	646,477.14	5,407,327.12	456.005	-45	60	218.54
SZ-11-27	646,599.16	5,407,150.41	450.172	-45	60	155.75
JB-11-01	645,990	5,407,502	423	-45	45	66.16
JB-11-02	645,990	5,407,502	423	-55	45	69.21





SYMBOL LEGEND

DIAMOND DRILL HOLE

SUGAR ZONE - LOWER ZONE

SUGAR ZONE - UPPER ZONE

LITHOLOGY LEGEND

7 MAFIC DYKES
 A DIAASE
 B DIORITE
 C LAMPORPHYRE

6 INTERMEDIATE TO MAFIC DYKES
 A DIORITE
 B GABBRO
 C AMPHIBOLITE
 D PERIDOTITE
 E INTERMEDIATE DYKE
 F MAFIC DYKE

5 FELSIC INTRUSIVES
 A GRANITE
 B GRANODIORITE
 C QUARTZ MONZONITE
 D SYANITE

4 FELSIC PORPHYRITIC INTRUSIVES
 A QUARTZ PORPHYRY
 B FELDSPAR PORPHYRY
 C QUARTZ-FELDSPAR PORPHYRY
 D FELSITE
 E PEGMATITE

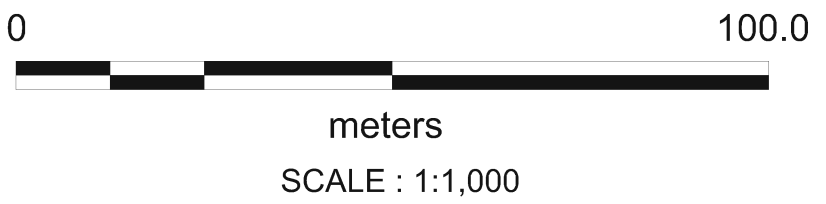
3 SEDIMENTS
 A GREYWACKE
 B ARGILLITE
 C CONGLOMERATE
 D IRON FORMATION
 F CHERT

2 INTERMEDIATE TO FELSIC VOLCANICS
 A FELSIC MASSIVE FLOWS
 B FELSIC TUFF
 C FELSIC LAPILLI TUFF
 D INTERMEDIATE MASSIVE FLOWS
 E INTERMEDIATE TUFF
 F INTERMEDIATE LAPILLI TUFF
 I FELSIT TO INTERMEDIATE VOLCANOCLASTICS

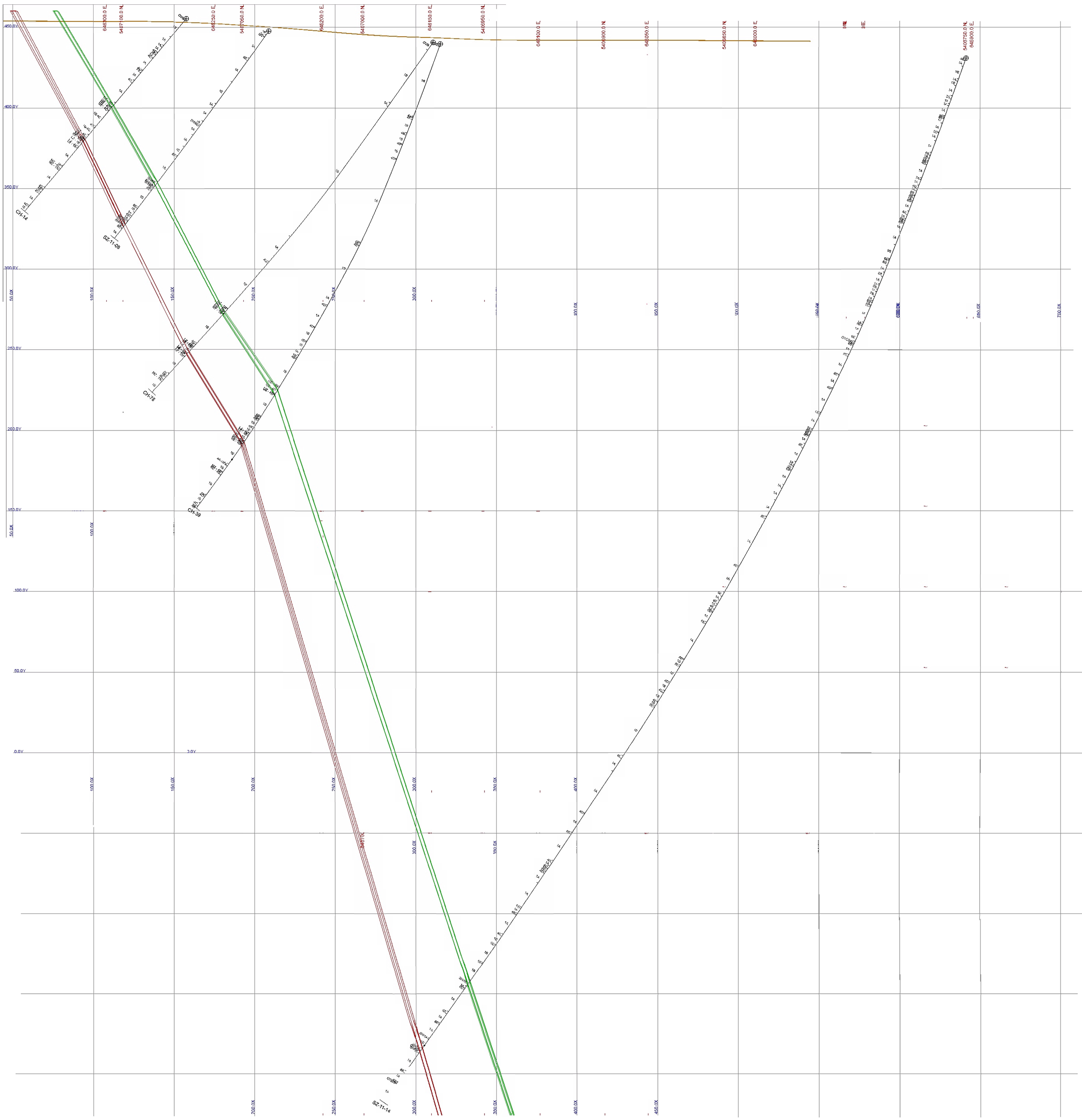
1 MAFIC TO ULTRAMAFIC VOLCANICS
 A MASSIVE FLOWS
 B PILLOW FLOWS
 C AGGLOMERATE
 D VARIOLITIC FLOWS
 E AMYGDUALOIDAL, VESICULAR FLOWS
 F FLOW-TOP BRECCIAS
 G AMPHIBOLITIC FLOWS
 H MAFIC TUFF
 I VOLCANOCLASTICS
 U ULTRAMAFIC FLOWS
 Z GABBROIC END MEMBER

ABBREVIATIONS
 SH SHEAR ZONE
 MZ MINERALIZED ZONE
 FZ FAULT ZONE

HOLE_ID	EASTING	NORTHING	ELEVATION	DIP	AZ	DEPTH
SZ-11-01	645,924.95	5,407,509.64	414.851	-70	50	114.91
SZ-11-02	645,979.03	5,407,450.69	427.403	-50	50	105.77
SZ-11-03	645,894.89	5,407,427.09	423.764	-70	50	221.59
SZ-11-04	645,762.94	5,407,444.69	406.423	-50	50	291.08
SZ-11-05	646,055.57	5,407,374.18	456.268	-45	50	90.24
SZ-11-06	646,032.3	5,407,033.49	434.232	-58	50	370.94
SZ-11-07	646,166.47	5,407,209.48	458.312	-50	50	252.13
SZ-11-08	646,216.59	5,407,048.92	447.651	-50	50	160.37
SZ-11-09	645,748.2	5,407,040.88	424.07	-70	50	663.85
SZ-11-10	646,256.83	5,407,153.05	457.27	-45	50	62.8
SZ-11-11	646,047.09	5,407,165.7	442.576	-55	50	233.23
SZ-11-12	646,046.93	5,407,165.4	442.705	-70	50	273.78
SZ-11-13	645,937.77	5,407,208.49	431.709	-55	50	270.43
SZ-11-14	645,888.18	5,406,767.27	430.843	-70	50	747
SZ-11-15	645,937.57	5,407,208.35	432.083	-70	50	334.37
SZ-11-16	645,893.45	5,407,307.95	419.699	-60	50	224.49
SZ-11-17	646,161.06	5,406,943.72	440.1	-55	50	297.79
SZ-11-18	645,789.34	5,407,218.61	409.988	-70	50	444.09
SZ-11-19	645,877.85	5,406,886.89	436.699	-70	50	624.09
SZ-11-20	645,712.42	5,407,212.08	408.667	-70	50	612.57
SZ-11-21	645,820.81	5,407,254.21	410.873	-55	50	348.69
SZ-11-22	646,478.25	5,406,824.36	463.597	-50	50	245.36
SZ-11-23	646,518.69	5,406,782.34	461.613	-55	50	208.79
SZ-11-24	646,451.89	5,406,725.28	451.076	-55	50	195.42
SZ-11-25	646,442.35	5,406,856.8	467.384	-50	50	117.65
SZ-11-26	646,477.14	5,407,327.12	456.005	-45	60	218.54
SZ-11-27	646,599.16	5,407,150.41	450.172	-45	60	155.75
JB-11-01	645,990	5,407,502	423	-45	45	66.16
JB-11-02	645,990	5,407,502	423	-55	45	69.21



SUGAR ZONE MINING CLAIM
SECTION 8NW 1135499



SYMBOL LEGEND

- DIAMOND DRILL HOLE
- SUGAR ZONE - LOWER ZONE
- SUGAR ZONE - UPPER ZONE

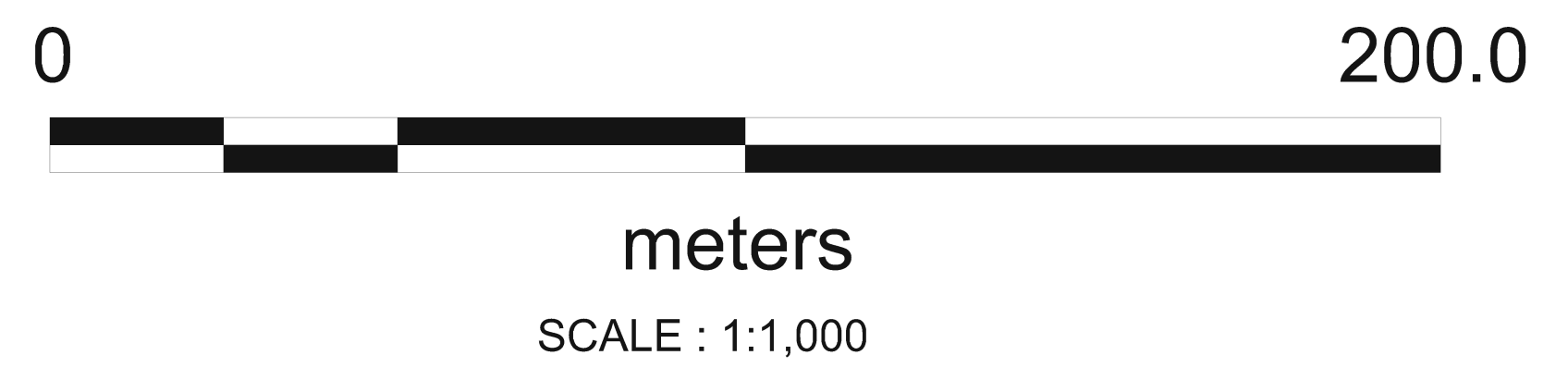
LITHOLOGY LEGEND

- MAFIC TO ULTRAMAFIC VOLCANICS
 - A MASSIVE FLOWS
 - B FLOW FLOWS
 - C AGGLOMERATE
 - D ARGILLITE FLOWS
 - E AMPHIBOLIC FLOWS
 - F MAFIC TUFF
 - G AMPHIBOLIC FLOWS
 - H MAFIC TUFF
 - I VOLCANOCLASTICS
 - J ULTRAMAFIC FLOWS
 - K GABBROIC END MEMBER
- INTERMEDIATE TO FELSIC VOLCANICS
 - A FELSIC MASSIVE FLOWS
 - B FELSIC TUFF
 - C FELSIC LAPILLI TUFF
 - D INTERMEDIATE MASSIVE FLOWS
 - E INTERMEDIATE TUFF
 - F INTERMEDIATE LAPILLI TUFF
 - G FELSIC TO INTERMEDIATE VOLCANOCLASTICS
- SEDIMENTS
 - A GREYWACKES
 - B ARGILLITE
 - C CONGLOMERATE
 - D IRON FORMATION
 - E CHERT
- FELSIC PORPHYRY INTRUSIVES
 - A QUARTZ PORPHYRY
 - B FELDSPAR PORPHYRY
 - C QUARTZ-FELDSPAR PORPHYRY
 - D FELSITE
 - E PEGMATITE
- FELSIC INTRUSIVES
 - A GRANITE
 - B GRANODIORITE
 - C QUARTZ MONZONITE
 - D DIORITE
- INTERMEDIATE TO MAFIC DYKES
 - A DIORITE
 - B GABBRO
 - C AMPHIBOLITE
 - D PERIDOTITE
 - E INTERMEDIATE DYKE
 - F MAFIC DYKE
- MAFIC DYKES
 - A DIORITE
 - B GABBRO
 - C AMPHIBOLITE
 - D PERIDOTITE
 - E INTERMEDIATE DYKE
 - F MAFIC DYKE
- DIORITE
- GABBRO
- AMPHIBOLITE
- PERIDOTITE
- INTERMEDIATE DYKE
- MAFIC DYKE

ABBREVIATIONS

- SH SHEAR ZONE
- MZ MINERALIZED ZONE
- EZ EMERALD ZONE

HOLE_ID	EASTING	NORTHING	ELEVATION	DIP	AZ	DEPTH
SZ-11-01	645.924.95	5.407.509.64	414.851	-70	50	114.91
SZ-11-02	645.979.03	5.407.450.69	427.403	-50	50	105.77
SZ-11-03	645.894.89	5.407.427.09	423.741	-70	50	221.59
SZ-11-04	645.762.94	5.407.444.69	408.423	-50	50	291.09
SZ-11-05	646.055.97	5.407.374.18	456.208	-45	50	90.24
SZ-11-06	646.032.3	5.407.033.49	434.232	-58	50	370.94
SZ-11-07	646.165.47	5.407.208.48	453.312	-50	50	232.13
SZ-11-08	646.216.59	5.407.048.92	447.651	-50	50	160.37
SZ-11-09	645.748.2	5.407.040.88	424.07	-70	50	683.85
SZ-11-10	646.296.83	5.407.153.05	457.27	-45	50	82.8
SZ-11-11	646.947.99	5.407.165.7	442.278	-55	50	232.23
SZ-11-12	646.046.93	5.407.165.4	442.705	-70	50	273.78
SZ-11-13	645.937.77	5.407.208.49	431.709	-55	50	270.43
SZ-11-14	645.888.18	5.406.707.27	435.843	-70	50	747
SZ-11-15	645.937.97	5.407.208.35	432.083	-70	50	334.37
SZ-11-16	645.893.45	5.407.307.95	419.699	-60	50	224.49
SZ-11-17	646.181.06	5.406.943.72	440.1	-55	50	297.79
SZ-11-18	645.793.34	5.407.216.81	409.988	-70	50	444.09
SZ-11-19	645.877.85	5.406.886.89	436.699	-70	50	624.09
SZ-11-20	645.712.42	5.407.212.05	408.897	-70	50	612.57
SZ-11-21	645.826.81	5.407.284.27	410.873	-55	50	348.89
SZ-11-22	646.478.25	5.406.624.50	463.597	-50	50	245.36
SZ-11-23	646.518.69	5.406.782.34	461.613	-55	50	208.79
SZ-11-24	646.451.89	5.406.725.29	451.076	-55	50	185.42
SZ-11-25	646.442.35	5.406.656.8	467.384	-50	50	117.65
SZ-11-26	646.477.14	5.407.327.12	456.005	-45	60	218.54
SZ-11-27	646.599.16	5.407.150.41	450.172	-45	60	155.75
SB-11-01	645.990	5.407.592	423	-45	45	86.16
SB-11-02	645.990	5.407.592	423	-55	45	89.21



SUGAR ZONE MINING CLAIM
SECTION 9NW 1135499