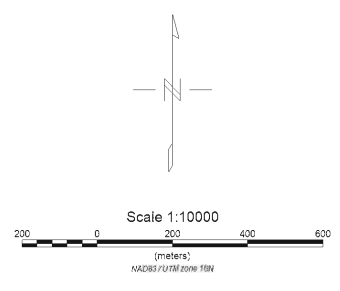
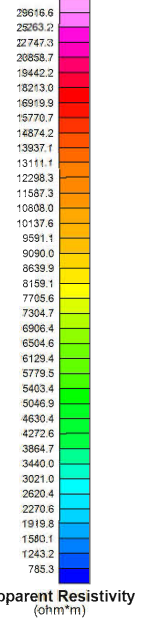
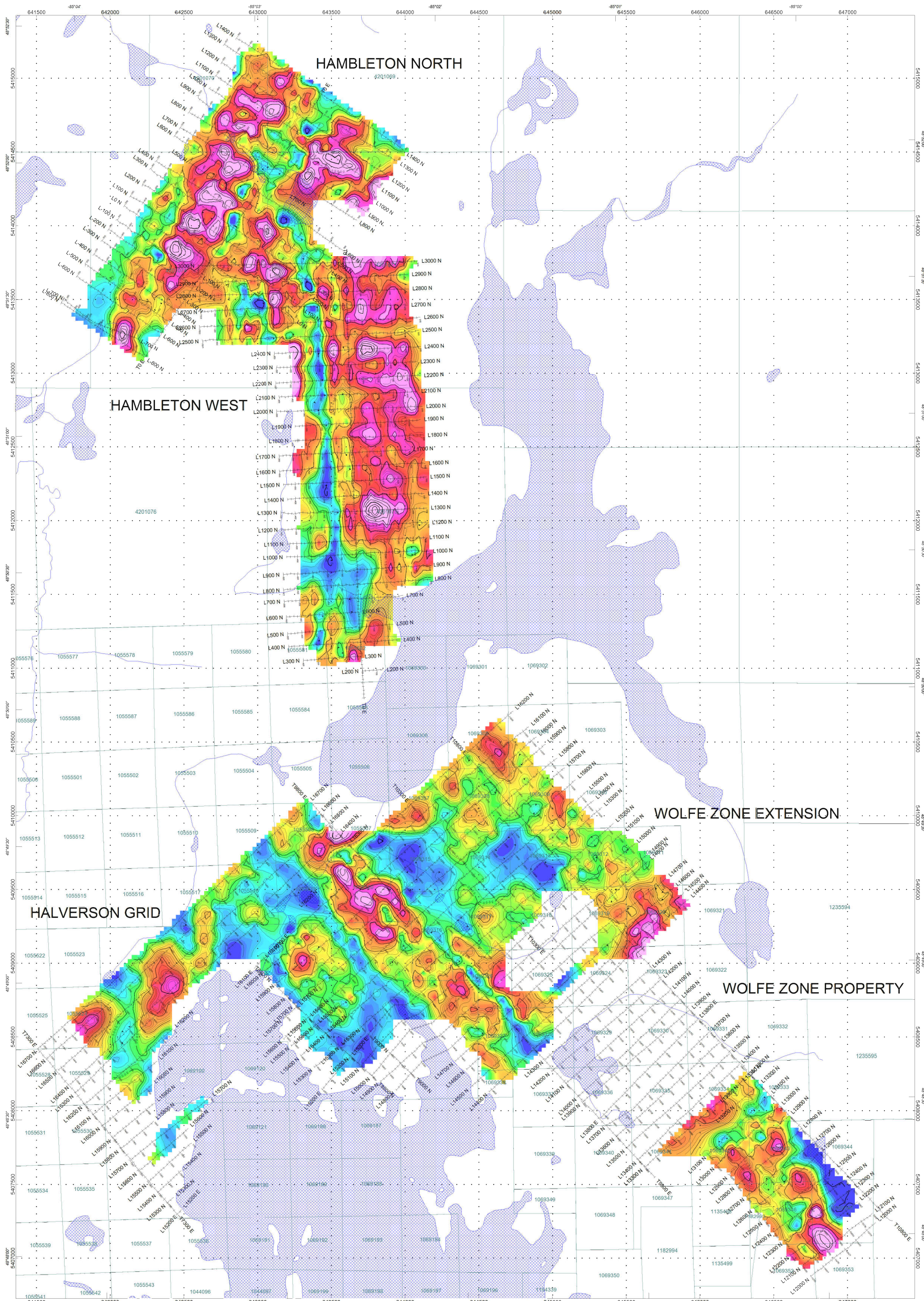


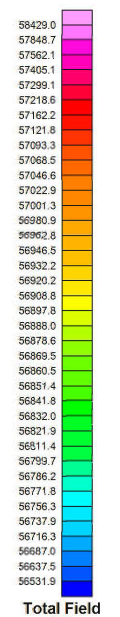
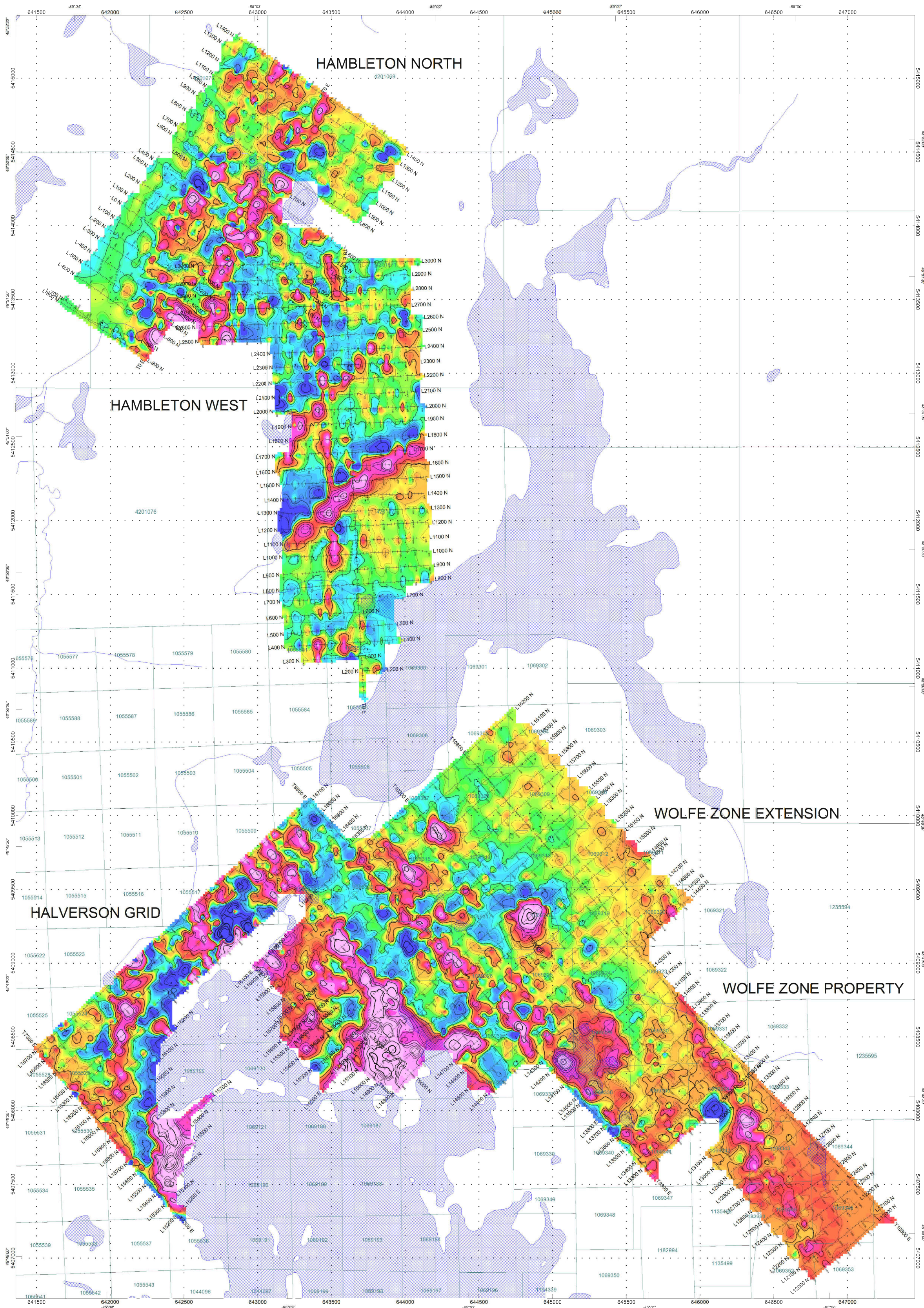
HARTE GOLDCORP.
SPECTRAL IP / RESISTIVITY
NORTH GRID
HAMBLETON TWP., ONTARIO
NTS: 42C/14

Chargeability @ n=2
 Array Pole-Dipole, a = 25 m
 Contours: 2.10 & 50 mV/V
 Instrument: (Rx) Scintrex PR12, (Tx) Unknown
 Topographic base map copyright: © Department of Natural Resources Canada
 Claims by: © Queen's Printer for Ontario, 2011

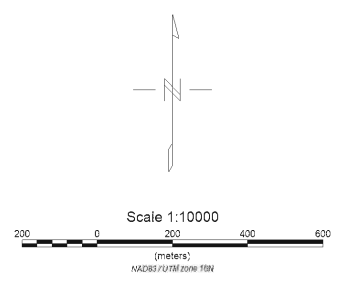
JVX LTD. ref. no. 11-64, August 2011

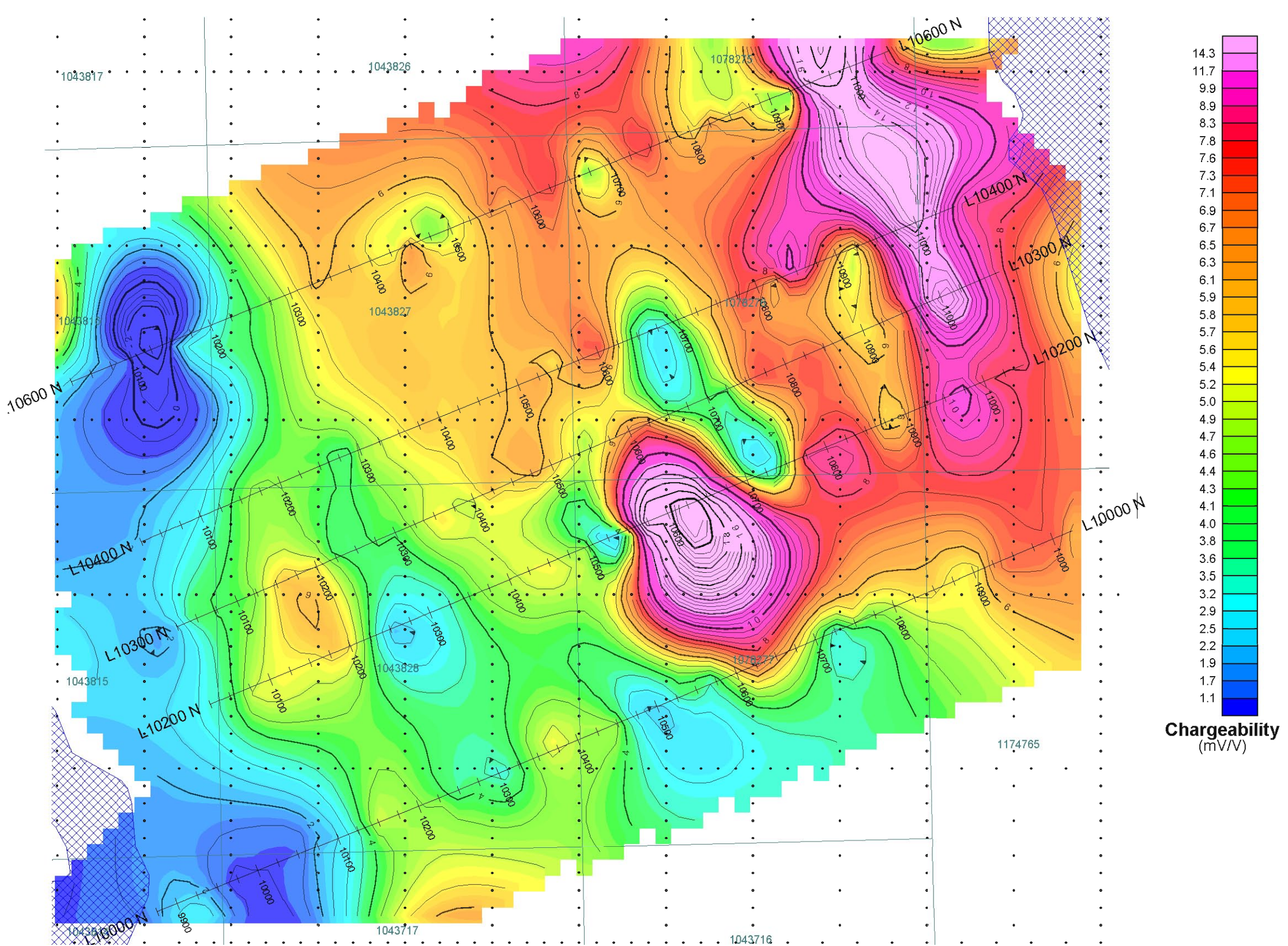


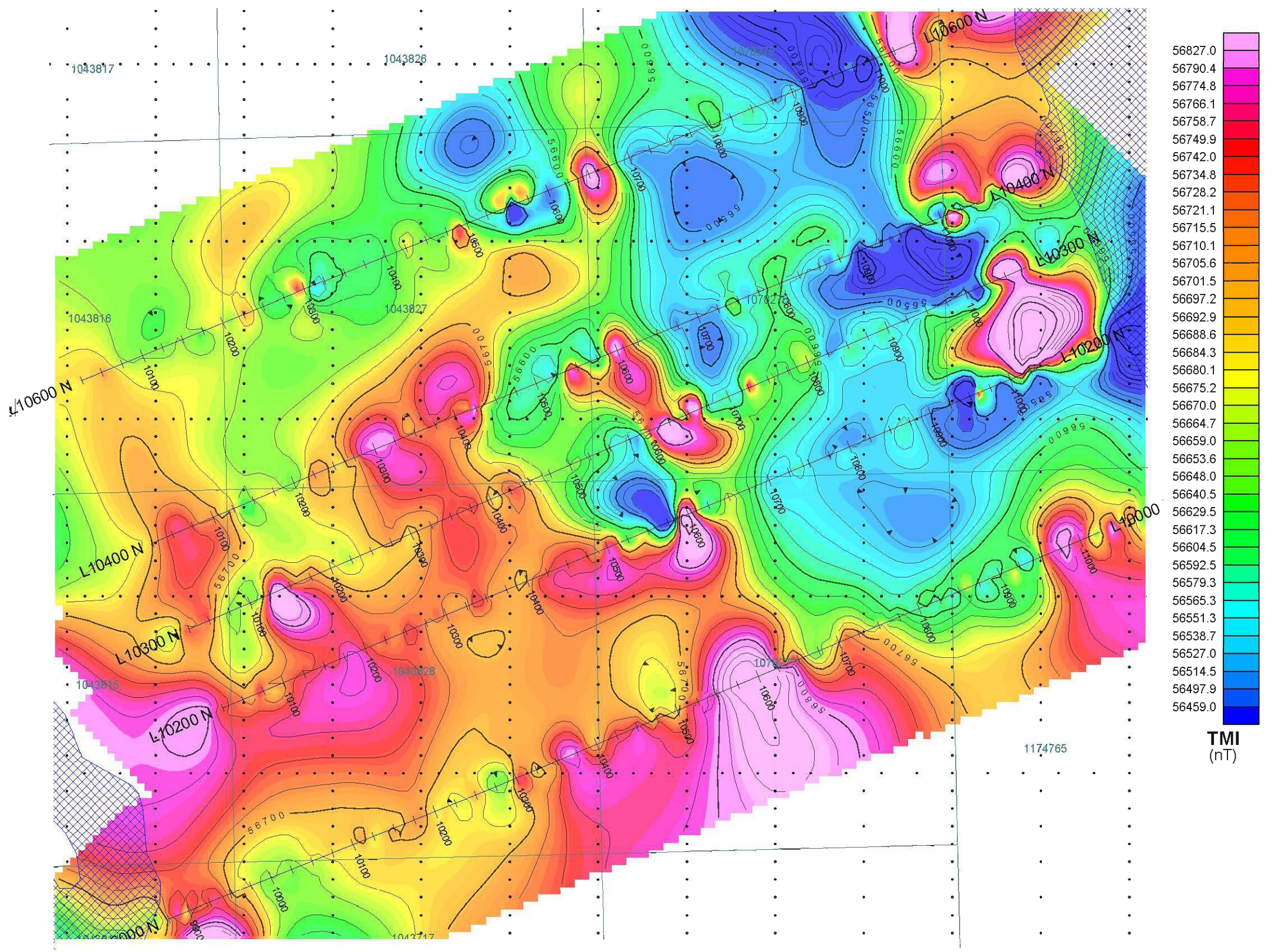
HARTE GOLDCORP.
SPECTRAL IP / RESISTIVITY
NORTH GRID
HAMBLETON TWP., ONTARIO
NTS: 42C/14
 Apparent Resistivity @ n=2
 Array Pole-Dipole, $\theta = 25^\circ$
 Contours: 1000, 5000 & 20 000 ohm-m
 Instrument: (Rx) Scintrex PR12, (Tx) Unknown
 Topographic base map copyright: © Department of Natural Resources Canada
 Claims by © Queen's Printer for Ontario, 2011
JVX LTD. ref. no. 11-64, August 2011



Total Field (nT)







2010-2011 HARTE GOLD PROSPECTING AND TRENCHING PROGRAMS

LEGEND

- Prospecting Samples
▲ (PPB)
- WRA Camps
⊠
- Prospecting Tracks
—
- Drill Trails
- - -
- Main Roads
—
- Trenches
▨
- Mining Claims
□

