

REPORT OF LAKE SEDIMENT SAMPLING

FOR

JACQUES ROBERT

ON THE

PORCUPINE LAKE PROPERTY

UNPATENTED CLAIM 1228673

WHITNEY TWP

PORCUPINE MINING DIVISION

TABLE OF CONTENTS

Summary 1
Introduction 2
Sediment Sampling Survey 2
Survey Results 2
Discussion and Recommendations 3

Tables

Table 1: Sample Locations and Descriptions

Appendix

- Statement of Qualifications
- Survey Map
- Assay Certificate
- Claim Map

Summary

On September 20, 2014, Jacques Robert and Randall Salo ventured to unpatented mining claim by boat. Four lake-bottom sediment samples were collected. All four samples returned anomalous gold content with the highest assaying 4,230 ppb Au. Continued investigation of the source of the gold is recommended through additional sediment sampling over the property.

Introduction

Unpatented mining claim 1228673 is located immediately west of the historic Hunter Gold Mine in Whitney township, Porcupine Mining Division, Porcupine, Ontario. The claim is entirely covered by the waters of Porcupine Lake. Mr. Robert has held the claim since 1997 and the following report describes lake-bottom sediment sampling carried out on September 20, 2014.

Sediment Sampling Survey

On September 20, 2014, Jacques Robert and Randall Salo ventured to unpatented mining claim 1228673 by aluminum boat and motor from a location downstream along the Porcupine River at Salo's residence. Four lake-bottom sediment samples were collected using a homemade aluminum rod with a tapered end. The upper 50 centimetres of sediment was collected for each sample. Samples were dried and sent to Activation Laboratories in Timmins for analysis of their gold content using fire assay methodology with atomic absorption finish and gravimetric finish for sample PL2.

Table 1: Sample Locations and Descriptions

Sample No.	UTM Northing	UTM Easting	Au (ppb)	Description
PL1	5370025	486856	235	grey clay
PL2	5370007	486815	4,230	brown clay
PL3	5369994	486776	23	grey clay
PL4	5369991	486732	315	grey clay

Nad 83, Zone 17

Survey Results

Results of the sampling were encouraging. All samples were anomalous in gold and sample PL2 realized 4.23 g/T Au from a brown clay source material.

Discussion and Recommendations

Results of the survey indicate gold in sediment underlying Porcupine Lake, the extent of which is presently unknown. Porcupine Lake is located within or proximal to the prolific Destor-Porcupine Deformation Zone and immediately northeast of Goldcorp's Dome Mine. It is a possibility that gold has been leached from discrete auriferous zones underlying Porcupine Lake and has been deposited and concentrated within the sediments of the lake. The existence of auriferous horizons at the Hunter Mine directly east of the Robert claim could also be a source for the gold in sediment anomalies realized by the current survey.

It is recommended that continued lake-bottom sediment sampling be utilized to determine the extent of gold in sediment on the Robert claim.

Sincerely,

A handwritten signature in black ink that reads "Randall Salo". The signature is written in a cursive, flowing style.

Randall Salo, P.Geol
Porcupine, ON

December 14, 2014

APPENDIX

Statement of Qualifications

I, Randall W. Salo of 800 Gervais Street North, Porcupine, Ontario do hereby certify that I:

- am a graduate of Lakehead University with an Honours Bachelor degree in Geology/Physics (1998).
- have been involved and working in mining exploration for more than 30 years in Canada, Mexico and Asia.
- am a member of the Association of Professional Geoscientists of Ontario with member number 1265.
- have included in this report all relevant data derived from both personal and public sources.
- have been physically on the property and have expressed personal opinions in this report.

Sincerely disclosed,

A handwritten signature in black ink that reads "Randall W. Salo". The signature is written in a cursive style with a large initial 'R' and a distinct 'S'.

Randall W. Salo, P.Geol.

December 14, 2014



Survey Map

Quality Analysis ...



Innovative Technologies

Date Submitted: 17-Nov-14
Invoice No.: A14-08909
Invoice Date: 24-Nov-14
Your Reference: Porcupine Lake

Rock N Roll Prospecting Inc
Porcupine Ontario P0N 1C0
Canada

ATTN: Randall Salo

CERTIFICATE OF ANALYSIS

4 Lake Sediments samples were submitted for analysis.

The following analytical package was requested:

Code 1A2-Timmins Au - Fire Assay AA
Code 1A3-Timmins Au - Fire Assay Gravimetric

REPORT **A14-08909**

This report may be reproduced without our consent. If only selected portions of the report are reproduced, permission must be obtained. If no instructions were given at time of sample submittal regarding excess material, it will be discarded within 90 days of this report. Our liability is limited solely to the analytical cost of these analyses. Test results are representative only of material submitted for analysis.

Notes:

If value exceeds upper limit we recommend reassay by fire assay gravimetric-Code 1A3

CERTIFIED BY:

A handwritten signature in black ink, appearing to read "Emmanuel Esemé".

Emmanuel Esemé , Ph.D.
Quality Control

ACTIVATION LABORATORIES LTD.

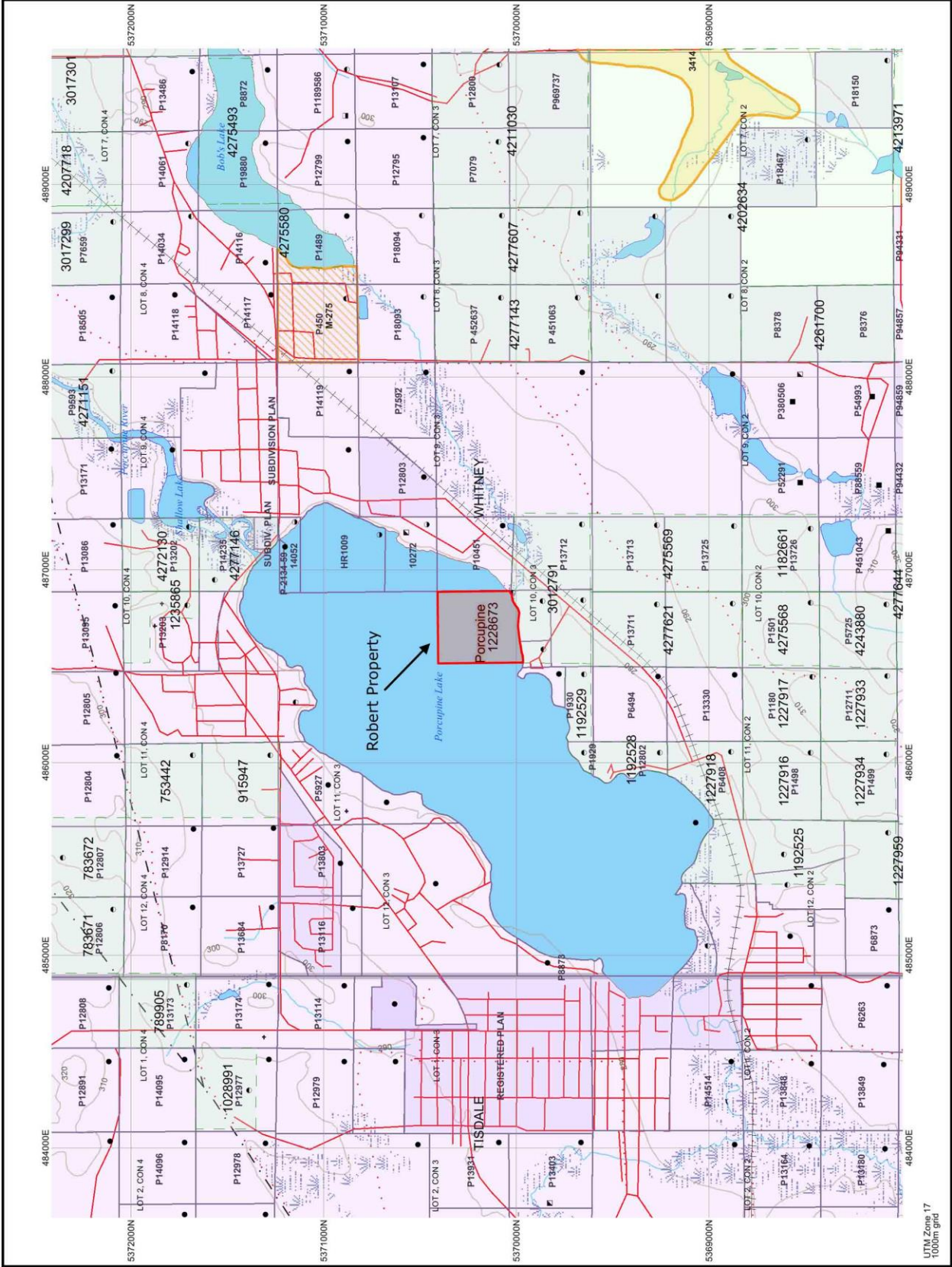
1752 Riverside Drive, Timmins, Ontario, Canada, P4R 1N1
TELEPHONE +705 264-0123 or +1.888.228.5227 FAX +1.905.648.9613
E-MAIL Timmins@actlabs.com ACTLABS GROUP WEBSITE www.actlabs.com

Results

Analyte Symbol	Au
Unit Symbol	ppb
Lower Limit	5
Method Code	FA-AA
PL1	235
PL2	4230
PL3	23
PL4	315

QC

Analyte Symbol	Au
Unit Symbol	ppb
Lower Limit	5
Method Code	FA-AA
SF67 Meas	820
SF67 Cert	835.000
SE68 Meas	592
SE68 Cert	599
Method Blank	< 5
Method Blank	< 5



UTM Zone 17
1000m grid